



UK Health
Security
Agency

Remote Health Advice Syndromic Surveillance System Bulletin (England) 2021 Week 52

Key messages

Data reported to: 3 January 2022

During week 52, NHS 111 calls for sore throat, cold/flu, cough, difficulty breathing and fever stabilised, but continued to increase in adults aged 15 years and over. NHS 111 online assessments increased in week 52 for sore throat, cold/flu, cough, difficulty breathing and fever. NHS 111 calls and online assessments for 'potential COVID-19' both increased over the past week.

Please note this bulletin includes data up to and including 3 Jan, including 3 bank holidays, which are expected to result in increased NHS 111 contacts.

Syndromic indicators at a glance

Table 1: The current trend (based on previous weeks, not only the current week) and the level (compared to the expected baseline), of each indicator included in this bulletin.

Indicator	Trend ¹	Level
Total NHS 111 calls (Figure 1)	No trend	No baseline
Total NHS 111 online (Figure 2)	Increasing	No baseline
Cold/flu NHS 111 calls (Figure 3)	No trend	Above baseline
Cold/flu NHS 111 online (Figure 4)	Increasing	Below baseline
Fever NHS 111 calls (Figure 5)	No trend	Below baseline
Fever NHS 111 online (Figure 6)	Increasing	Below baseline
Cough NHS 111 calls (Figure 7)	No trend	Below baseline
Cough NHS 111 online (Figure 8)	Increasing	Similar to baseline
Difficulty breathing NHS 111 calls (Figure 9)	No trend	Similar to baseline
Difficulty breathing NHS 111 online (Figure 10)	Increasing	Below baseline
Sore throat NHS 111 calls (Figure 11)	No trend	Above baseline
Sore throat NHS 111 online (Figure 12)	Increasing	Above baseline
Loss of taste or smell NHS 111 calls (Figure 13)	Increasing	No baseline
Loss of taste or smell NHS 111 online (Figure 14)	Increasing	No baseline
Potential COVID-19 NHS 111 calls (Figure 15)	Increasing	No baseline
Potential COVID-19 NHS 111 online (Figure 16)	Increasing	No baseline
Diarrhoea NHS 111 calls (Figure 17)	Decreasing	Below baseline
Diarrhoea NHS 111 online (Figure 18)	Increasing	Above baseline
Vomiting NHS 111 calls (Figure 19)	Decreasing	Below baseline
Vomiting NHS 111 online (Figure 20)	Increasing	Above baseline
Eye problems NHS 111 calls (Figure 21)	Decreasing	Similar to baseline
Eye problems NHS 111 online (Figure 22)	Increasing	Above baseline

¹ trend reports on the trend seen over most recent and earlier weeks

Contents

Key messages	2
Syndromic indicators at a glance.....	2
Contents.....	3
About this syndromic surveillance system.....	5
Total contacts.....	6
NHS 111 calls.....	6
NHS 111 online	8
Respiratory conditions.....	10
Cold/flu NHS 111 calls.....	10
Cold/flu NHS 111 online	12
Fever NHS 111 calls.....	14
Fever NHS 111 online	16
Cough NHS 111 calls	18
Cough NHS 111 online.....	20
Difficulty breathing NHS 111 calls	22
Difficulty breathing NHS 111 online	24
Sore throat NHS 111 calls	26
Sore throat NHS 111 online.....	28
Loss of taste or smell NHS 111 calls	30
Loss of taste or smell NHS 111 online.....	32
Potential COVID-19 NHS 111 calls	34
Potential COVID-19 NHS 111 online	36
Gastrointestinal conditions	38
Diarrhoea NHS 111 calls	38
Diarrhoea NHS 111 online.....	40
Vomiting NHS 111 calls.....	42
Vomiting NHS 111 online	44
Seasonal environmental conditions	46
Cold weather watch in place.....	46

Eye problems NHS 111 calls.....	47
Eye problems NHS 111 online	49
Notes and caveats	51
COVID-19 syndromic surveillance.....	51
Acknowledgements.....	53
About the UK Health Security Agency	54

About this syndromic surveillance system

This bulletin presents data from the UK Health Security Agency (UKHSA) remote health advice syndromic surveillance system.

Syndromic surveillance can be used to:

- assess current trends
- assess current trends and levels compared to historical baselines
- compare trends between age groups/areas

Syndromic surveillance should not be used to:

- estimate total burden or number of 'cases' of a condition (see **Notes and caveats**)
- compare levels between age groups/areas

Fully anonymised, daily NHS 111 call and NHS 111 online assessment data are analysed and reported here, to identify and describe trends for a variety of syndromic indicators:

- syndromic indicators include groupings such as cold/flu, fever and diarrhoea
- syndromic indicators are based on:
 - symptoms (known as the Pathway) identified from both NHS 111 calls and NHS 111 online assessments
 - the potential COVID-19 syndromic indicator is based on the outcome (known as the Disposition), rather than the Pathway
- **Key messages** describes any notable trends nationally (England), by age group and/or by geographical area (based on UKHSA Regions)
- the full list of syndromic indicators reported here, along with their current level and trend, are summarised in **Table 1**
- charts are provided for each syndromic indicator, on a national basis, by age group and by geographical area (UKHSA Region). Each chart includes a year of data with:
 - 7-day moving averages (adjusted for weekends and bank holidays) to aid in the identification of trend
 - statistical baselines (where available) to aid in the assessment of level compared to historical expectations

For further information please see the **Notes and caveats** section.

Previous weekly bulletins from this system are available [here](#).

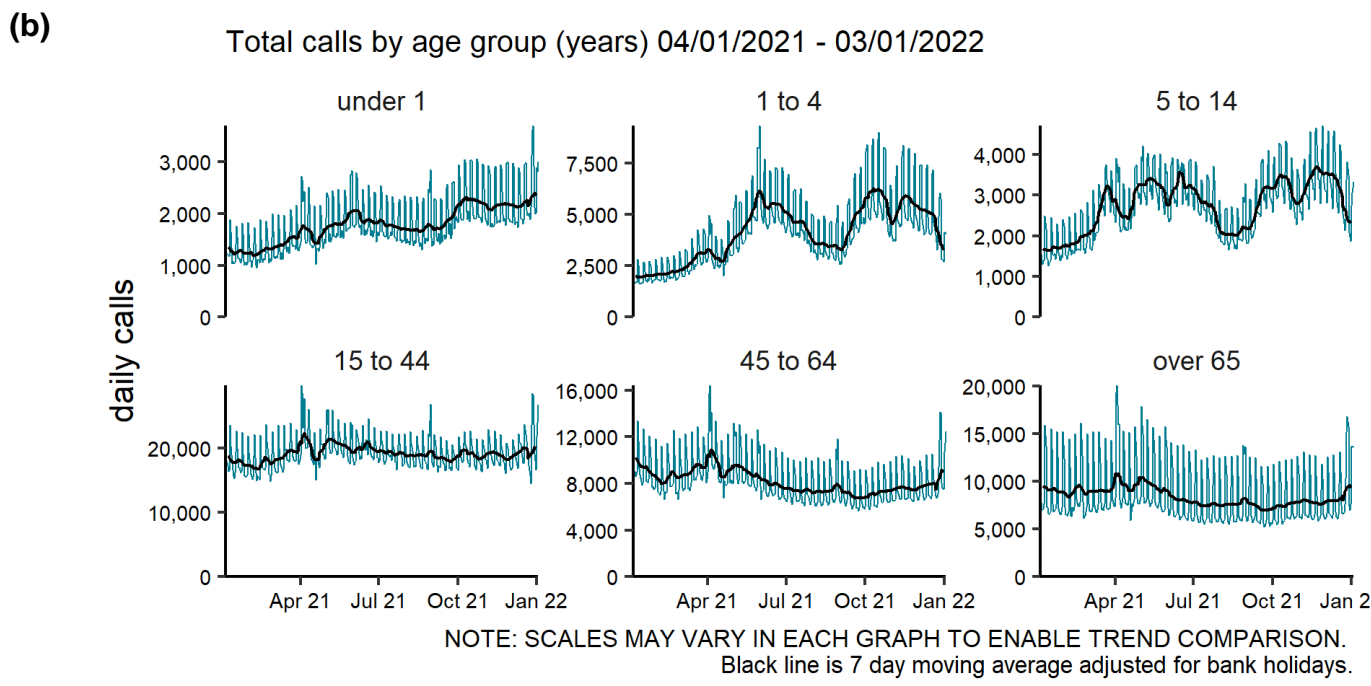
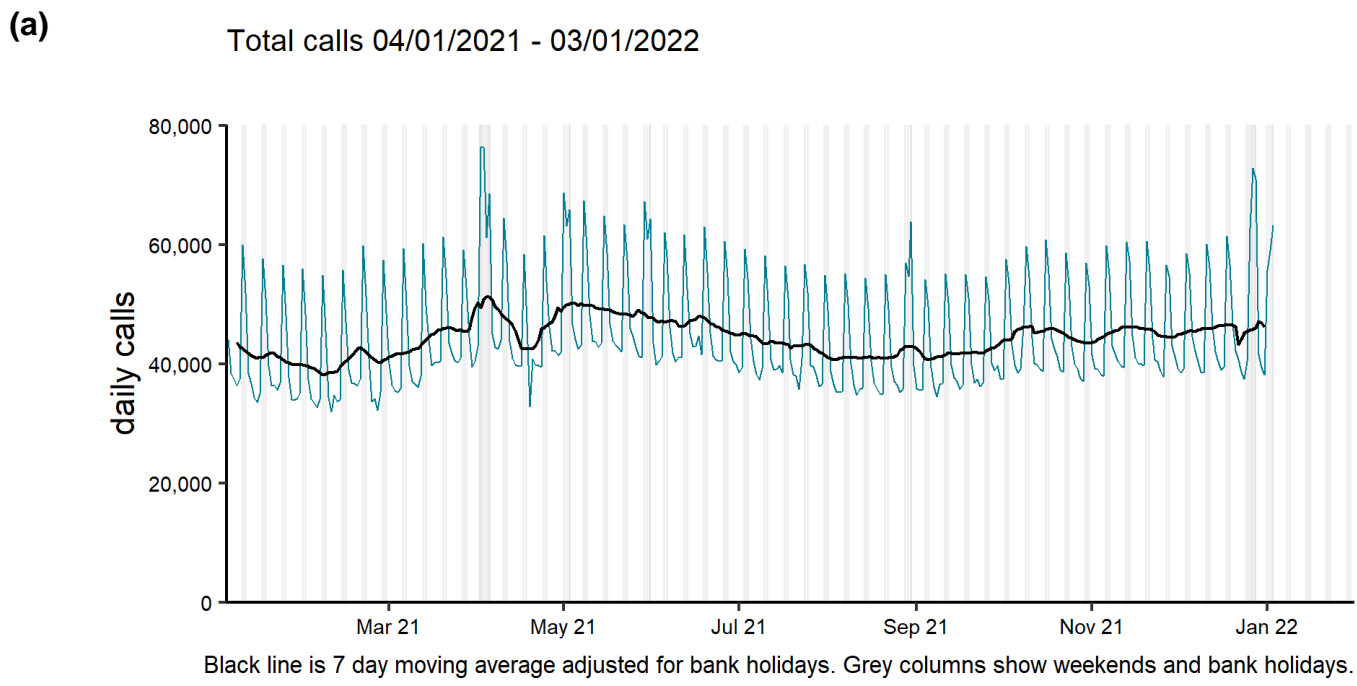
Data quality issues of note this week

Since September 2020, call numbers in the syndromic dataset received for the North West have been lower than previously recorded, this is due to operational changes in this location.

Total contacts

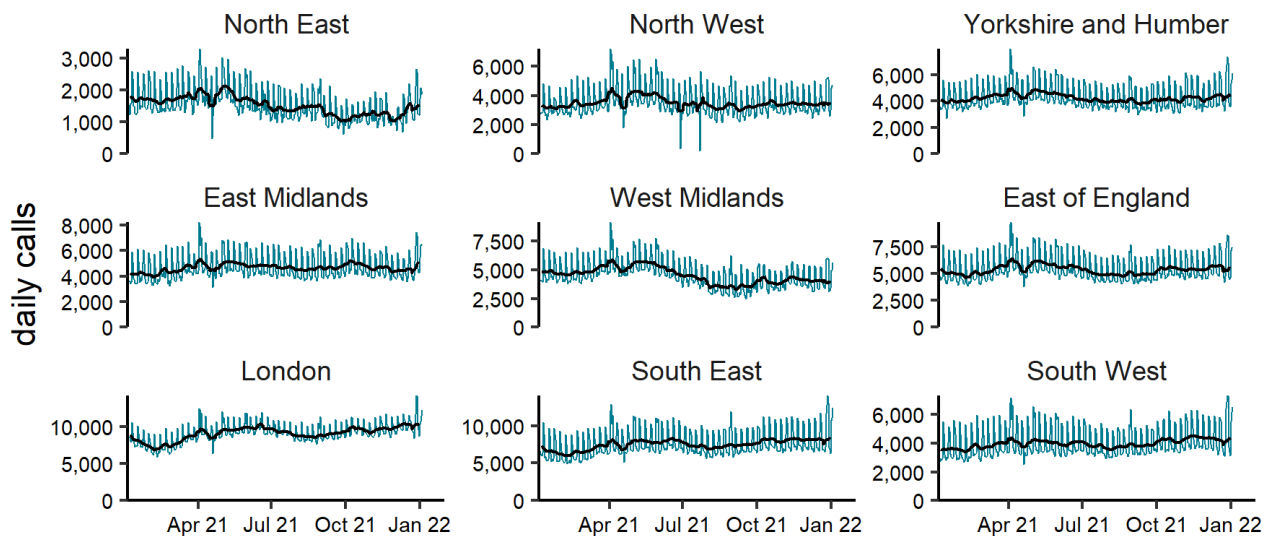
NHS 111 calls

Figure 1: Daily number of NHS 111 calls (with 7-day moving average adjusted for bank holidays) recorded in this syndromic surveillance system in England (a) nationally, (b) by age and (c) by UKHSA Region.



(c)

Total calls by region 04/01/2021 - 03/01/2022



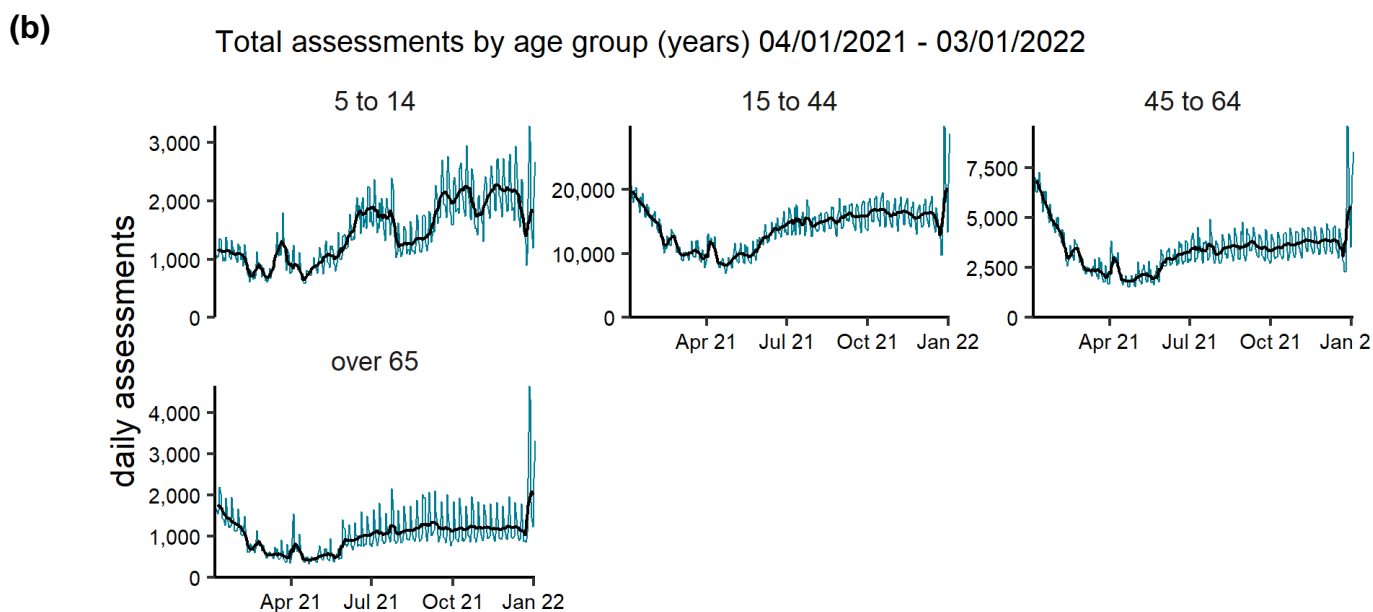
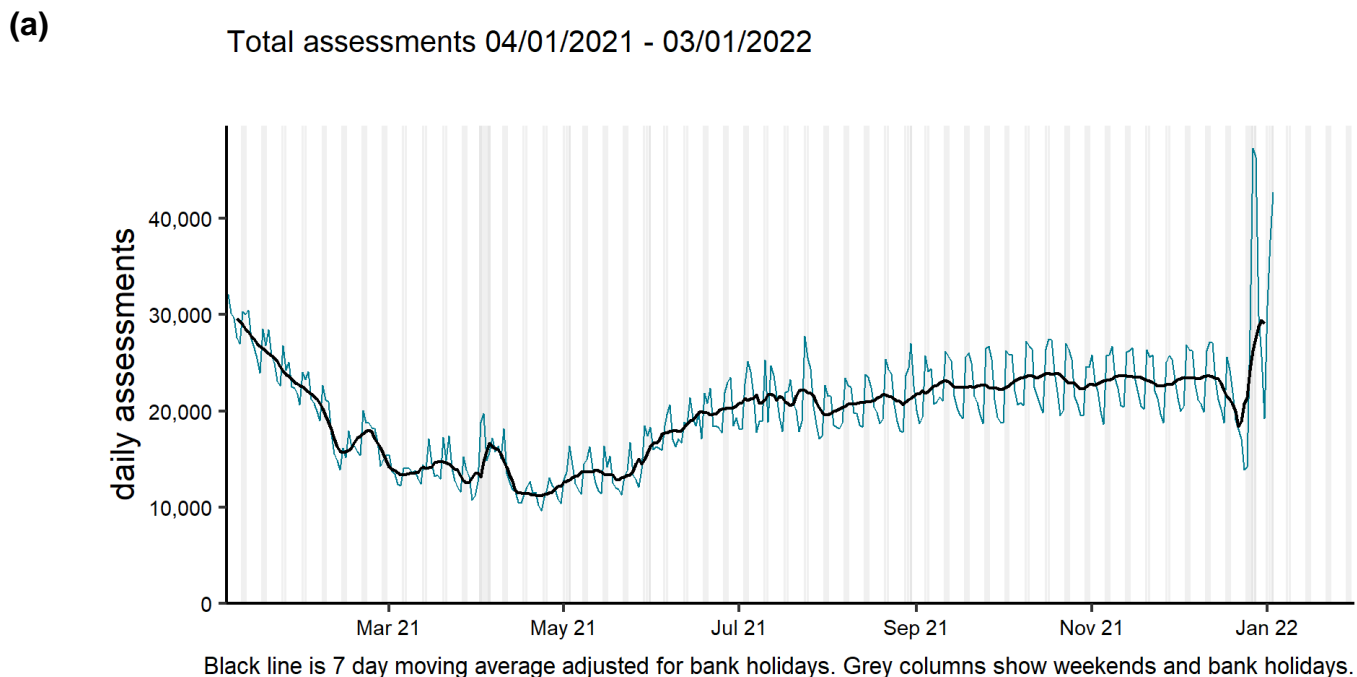
NOTE: SCALES MAY VARY IN EACH GRAPH TO ENABLE TREND COMPARISON. Black line is 7 day moving average adjusted for bank holidays.

Table 2: The number of NHS 111 calls in England recorded each day in the most recent week.

Date	Number of calls
28 December 2021	71,582
29 December 2021	42,056
30 December 2021	39,827
31 December 2021	38,565
01 January 2022	56,207
02 January 2022	59,441
03 January 2022	63,650

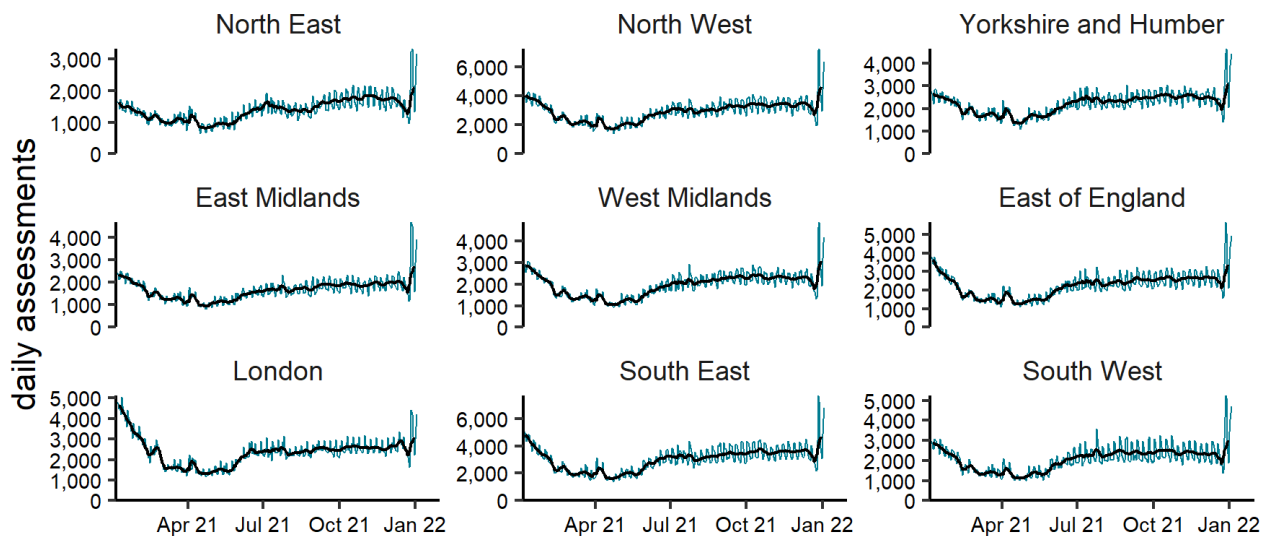
NHS 111 online

Figure 2: Daily number of completed NHS 111 online assessments (with 7-day moving average adjusted for bank holidays) recorded in this syndromic surveillance system in England (a) nationally, (b) by age and (c) by UKHSA Region.



NOTE: SCALES MAY VARY IN EACH GRAPH TO ENABLE TREND COMPARISON. Black line is 7 day moving average adjusted for bank holidays.

(c) Total assessments by region 04/01/2021 - 03/01/2022



NOTE: SCALES MAY VARY IN EACH GRAPH TO ENABLE TREND COMPARISON.
Black line is 7 day moving average adjusted for bank holidays.

Table 3: The number of completed NHS 111 online assessments in England recorded each day in the most recent week.

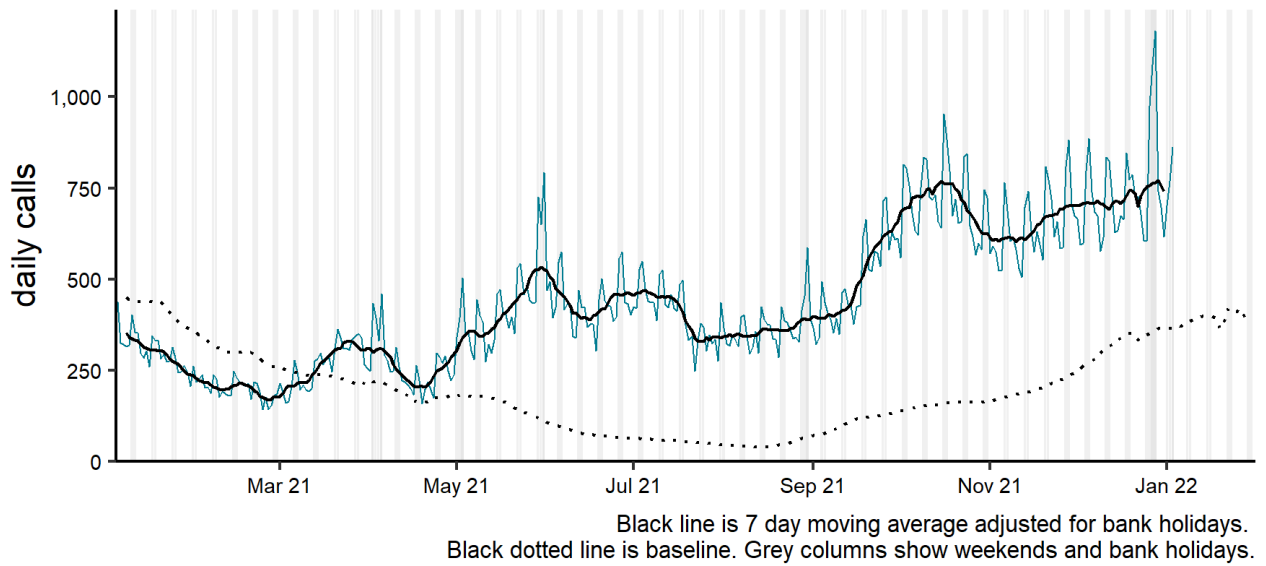
Date	Number of completed assessments
28 December 2021	46,676
29 December 2021	30,065
30 December 2021	25,845
31 December 2021	19,331
01 January 2022	31,121
02 January 2022	38,044
03 January 2022	42,966

Respiratory conditions

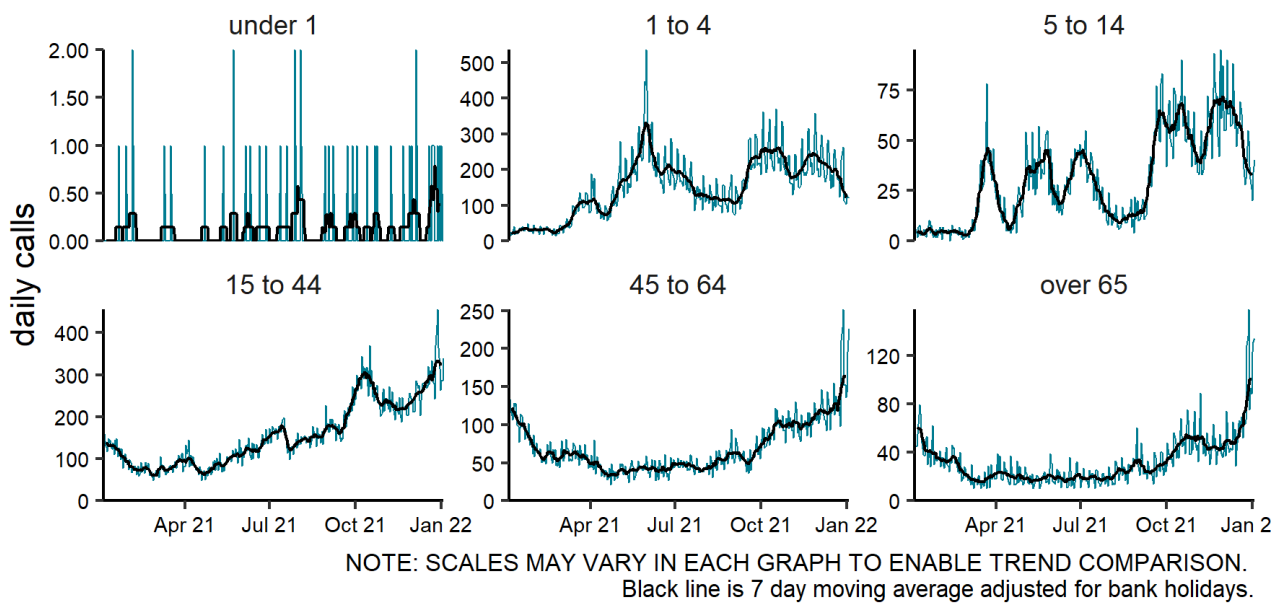
Cold/flu NHS 111 calls

Figure 3: Daily number of NHS 111 calls (and 7-day moving average adjusted for bank holidays) for cold/flu, England (a) nationally, (b) by age and (c) by UKHSA Region.

(a) Cold or flu 04/01/2021 - 03/01/2022

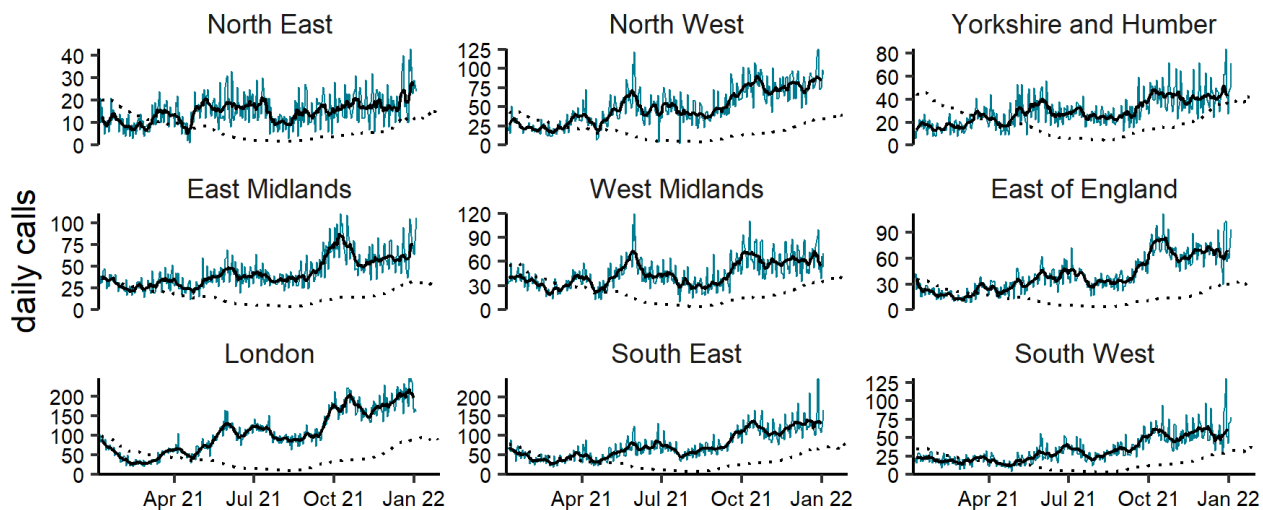


(b) Cold or flu by age group (years) 04/01/2021 - 03/01/2022



(c)

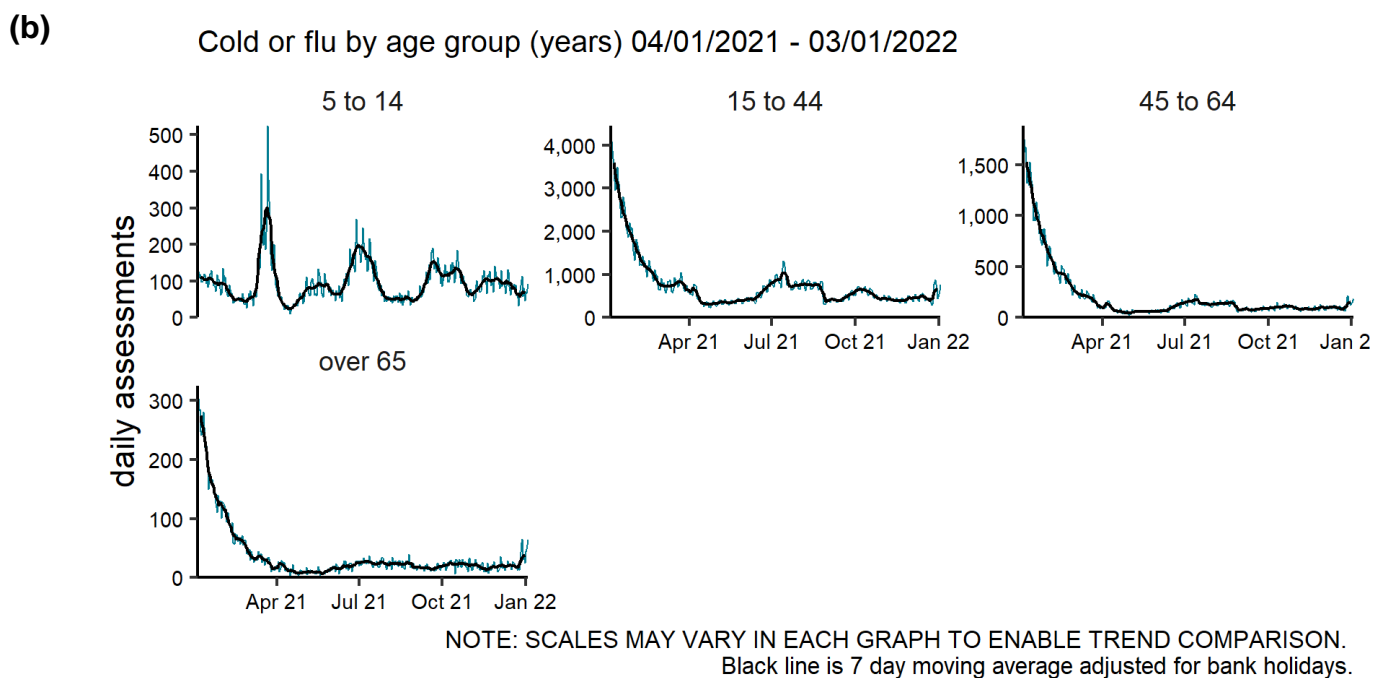
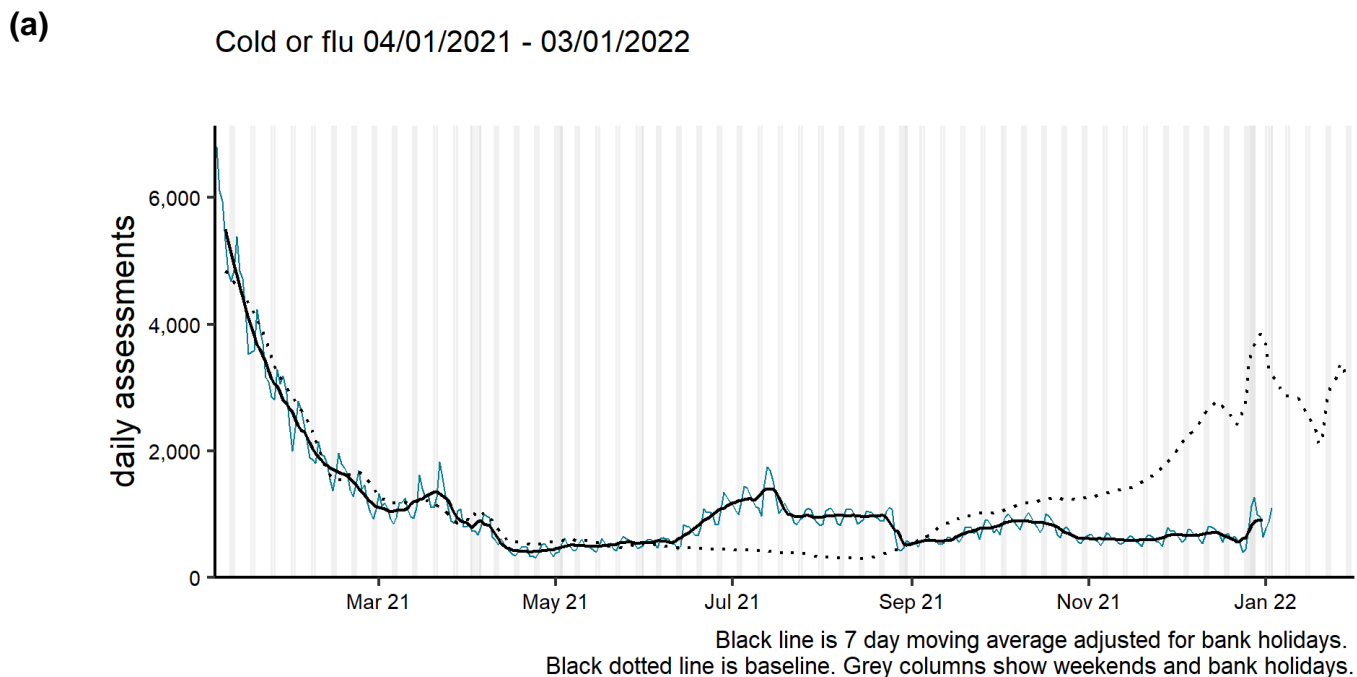
Cold or flu by region 04/01/2021 - 03/01/2022



NOTE: SCALES MAY VARY IN EACH GRAPH TO ENABLE TREND COMPARISON.
Black line is 7 day moving average adjusted for bank holidays.
Black dotted line is baseline.

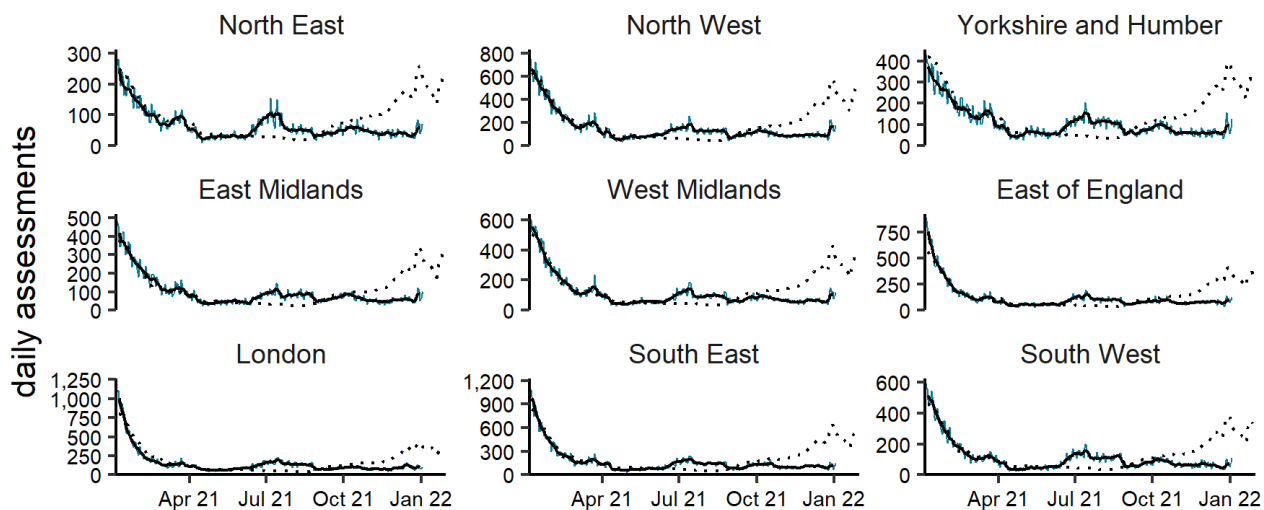
Cold/flu NHS 111 online

Figure 4: Daily number of completed NHS 111 online assessments (and 7-day moving average adjusted for bank holidays) for cold/flu, England (a) nationally, (b) by age and (c) by UKHSA Region.



(c)

Cold or flu by region 04/01/2021 - 03/01/2022



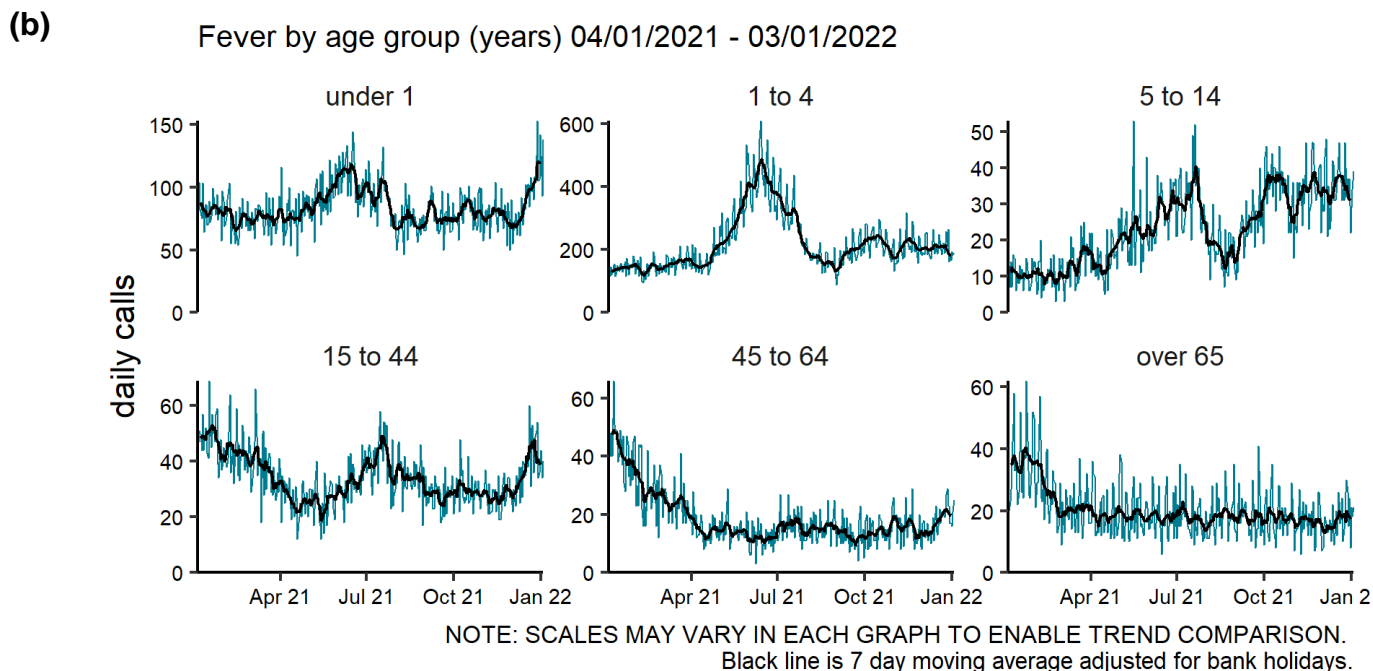
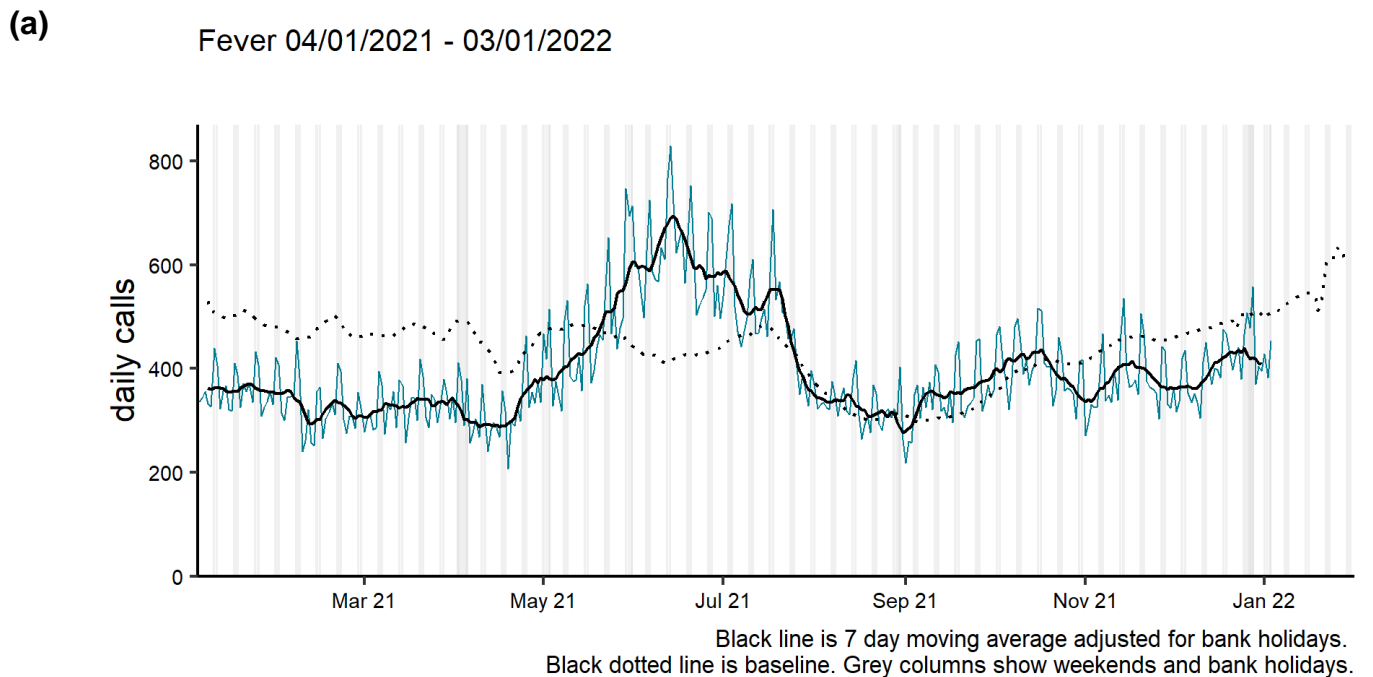
NOTE: SCALES MAY VARY IN EACH GRAPH TO ENABLE TREND COMPARISON.

Black line is 7 day moving average adjusted for bank holidays.

Black dotted line is baseline.

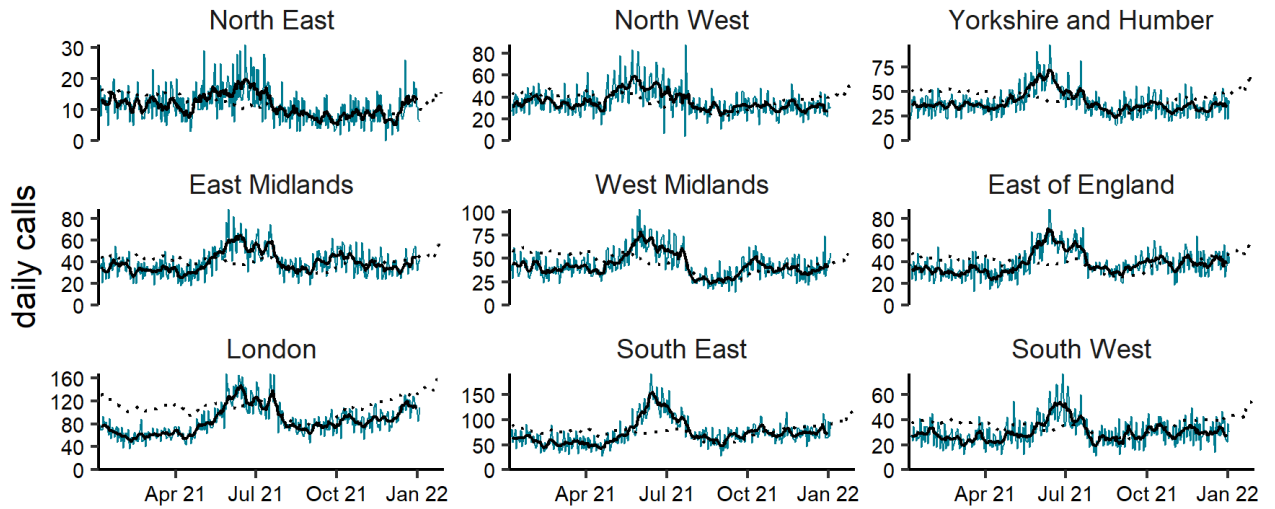
Fever NHS 111 calls

Figure 5: Daily number of NHS 111 calls (and 7-day moving average adjusted for bank holidays) for fever, England (a) nationally, (b) by age and (c) by UKHSA Region.



(c)

Fever by region 04/01/2021 - 03/01/2022

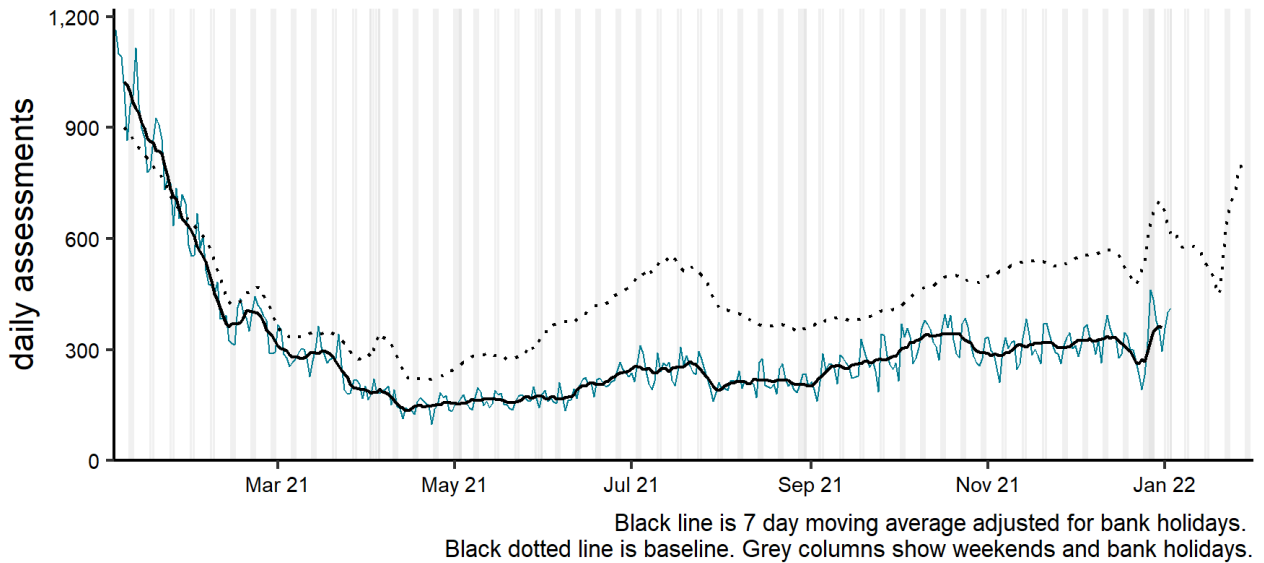


NOTE: SCALES MAY VARY IN EACH GRAPH TO ENABLE TREND COMPARISON.
Black line is 7 day moving average adjusted for bank holidays.
Black dotted line is baseline.

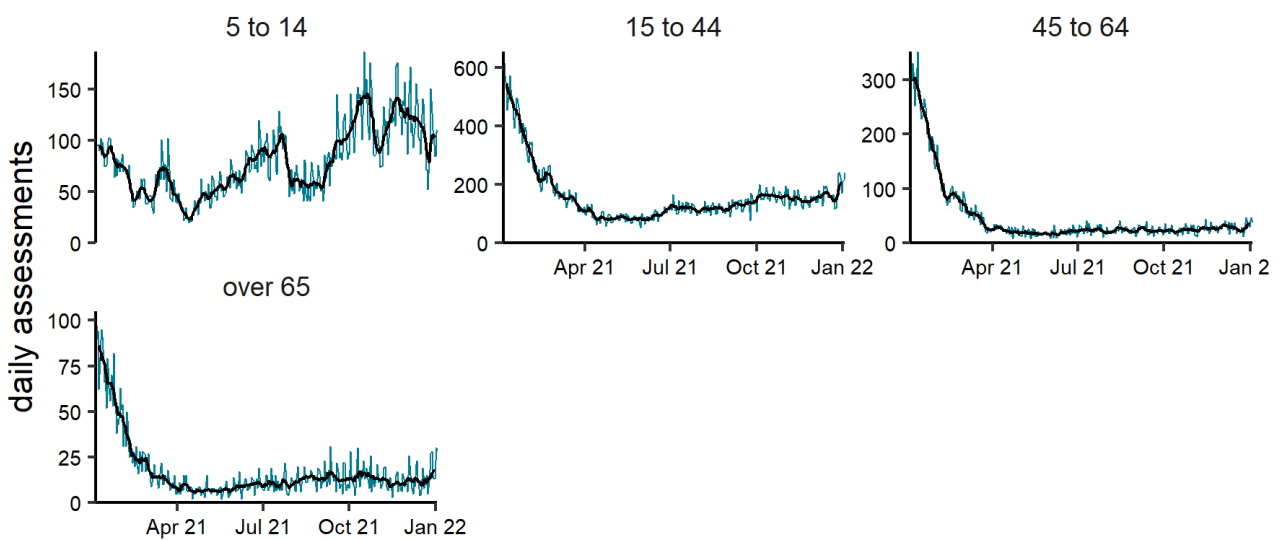
Fever NHS 111 online

Figure 6: Daily number of completed NHS 111 online assessments (and 7-day moving average adjusted for bank holidays) for fever, England (a) nationally, (b) by age and (c) by UKHSA Region.

(a) Fever 04/01/2021 - 03/01/2022



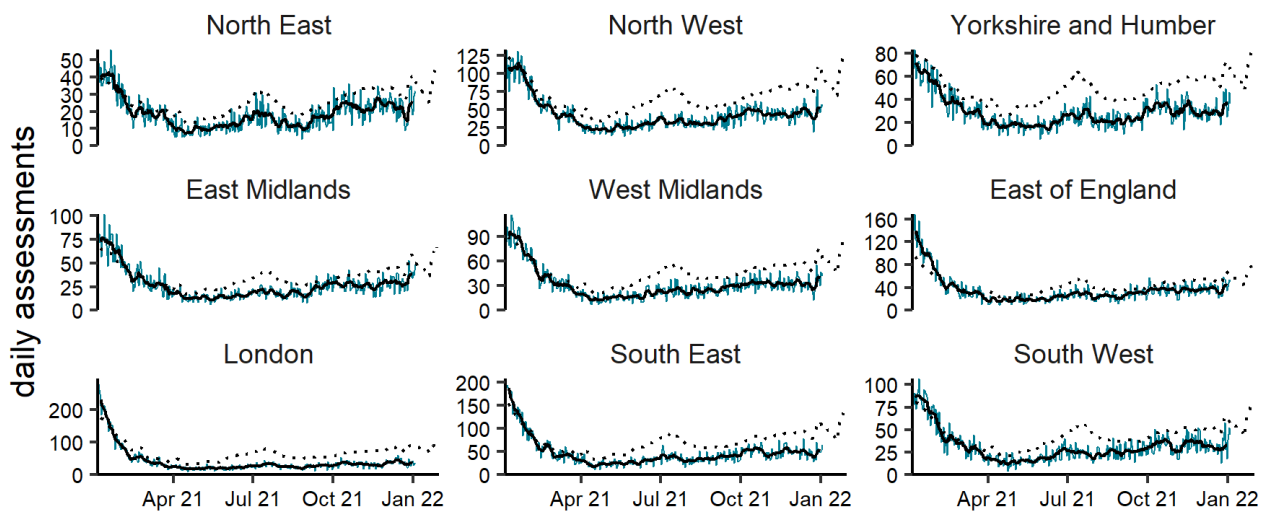
(b) Fever by age group (years) 04/01/2021 - 03/01/2022



NOTE: SCALES MAY VARY IN EACH GRAPH TO ENABLE TREND COMPARISON.
Black line is 7 day moving average adjusted for bank holidays.

(c)

Fever by region 04/01/2021 - 03/01/2022

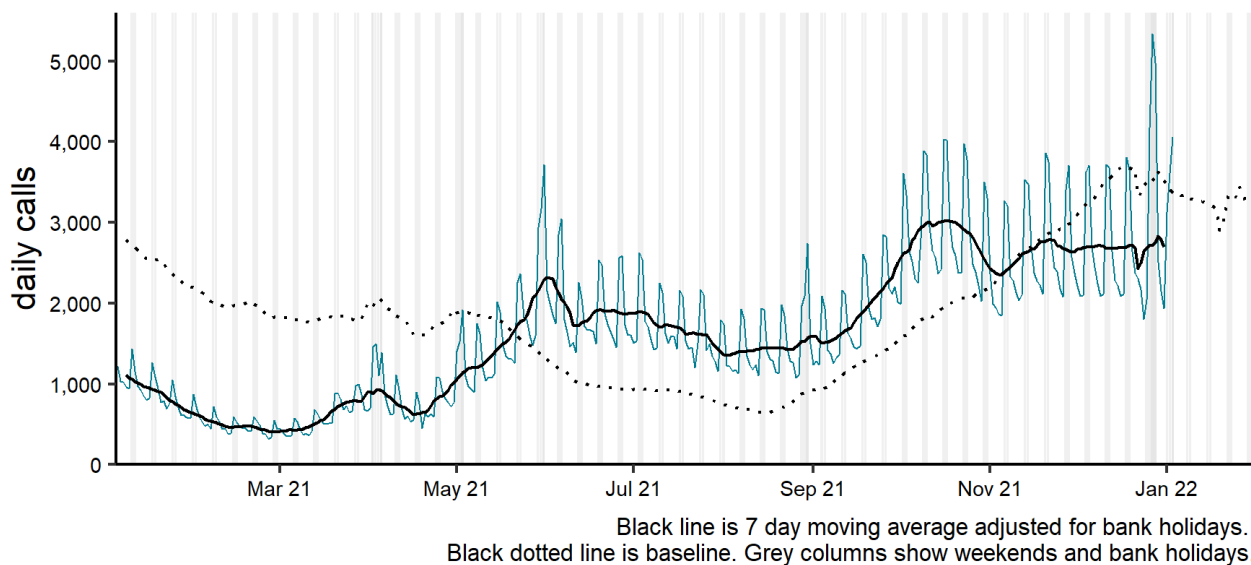


NOTE: SCALES MAY VARY IN EACH GRAPH TO ENABLE TREND COMPARISON.
Black line is 7 day moving average adjusted for bank holidays.
Black dotted line is baseline.

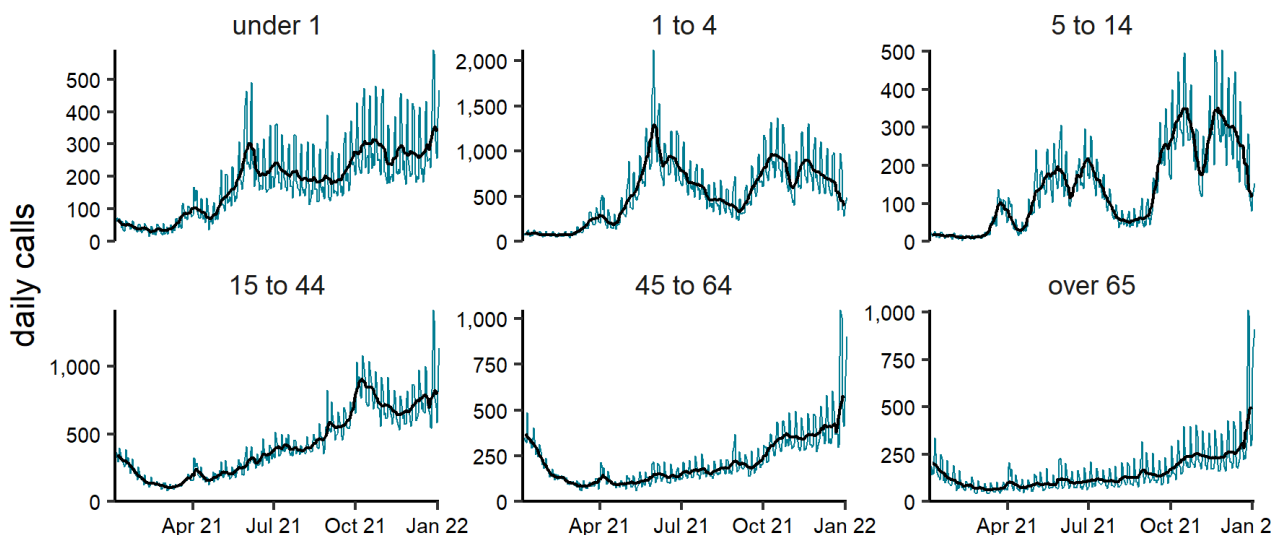
Cough NHS 111 calls

Figure 7: Daily number of NHS 111 calls (and 7-day moving average adjusted for bank holidays) for cough, England (a) nationally, (b) by age and (c) by UKHSA Region.

(a) Cough 04/01/2021 - 03/01/2022



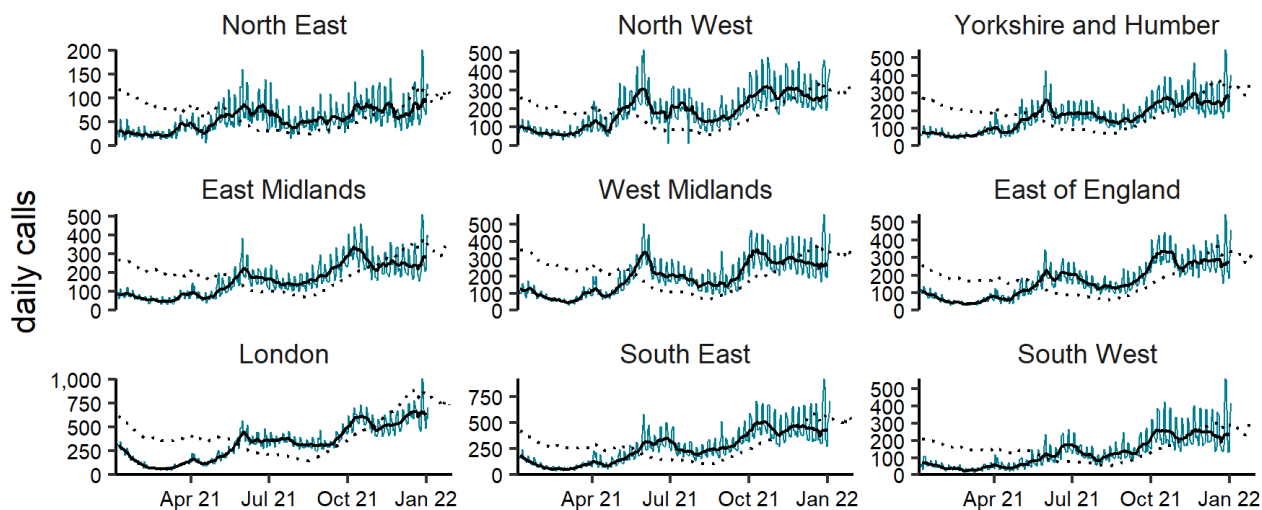
(b) Cough by age group (years) 04/01/2021 - 03/01/2022



NOTE: SCALES MAY VARY IN EACH GRAPH TO ENABLE TREND COMPARISON.
Black line is 7 day moving average adjusted for bank holidays.

(c)

Cough by region 04/01/2021 - 03/01/2022

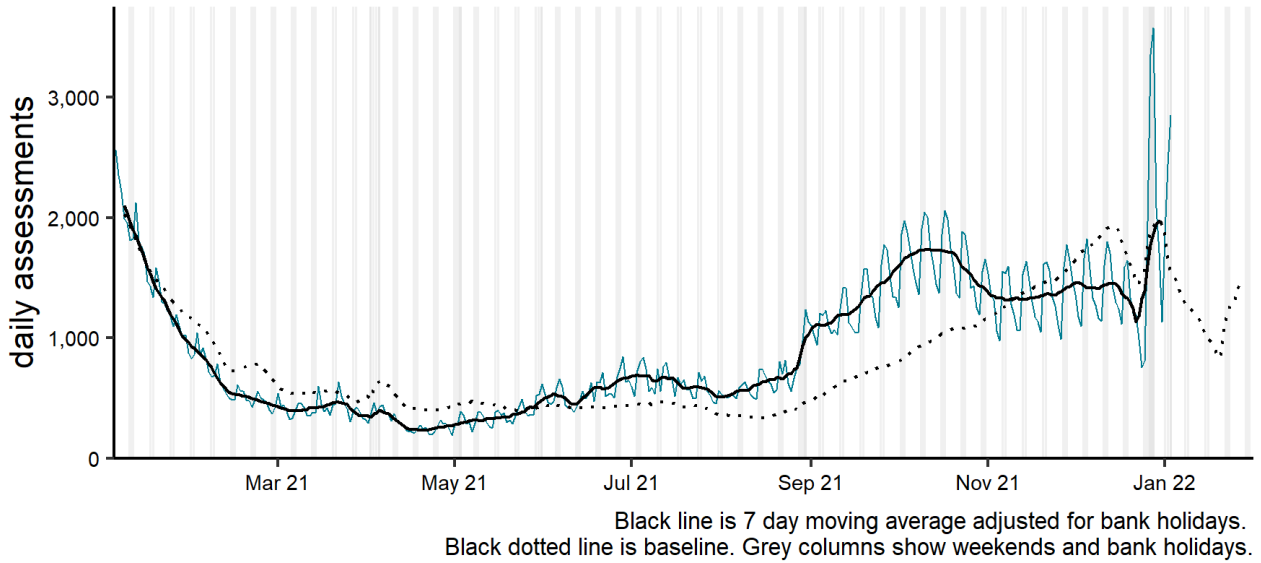


NOTE: SCALES MAY VARY IN EACH GRAPH TO ENABLE TREND COMPARISON.
Black line is 7 day moving average adjusted for bank holidays.
Black dotted line is baseline.

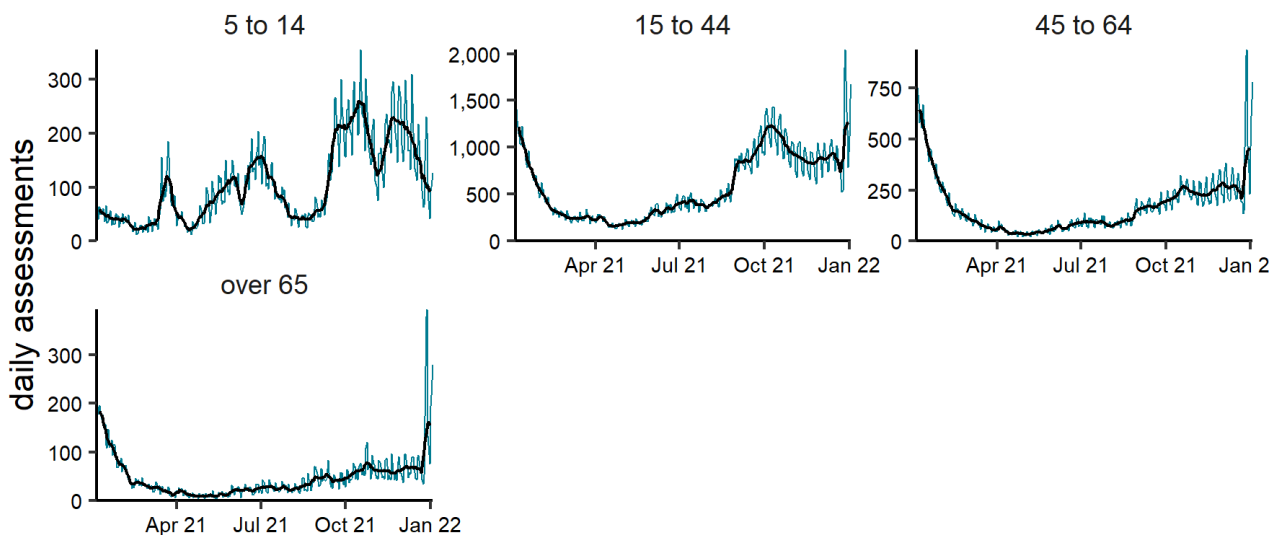
Cough NHS 111 online

Figure 8: Daily number of completed NHS 111 online assessments (and 7-day moving average adjusted for bank holidays) for cough, England (a) nationally, (b) by age and (c) by UKHSA Region.

(a) Cough 04/01/2021 - 03/01/2022



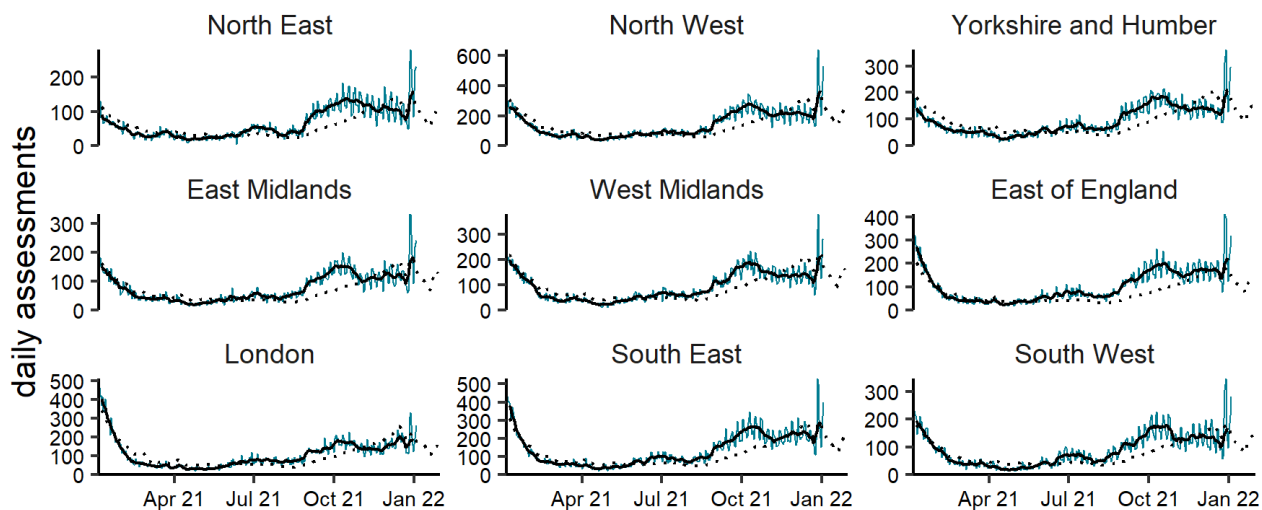
(b) Cough by age group (years) 04/01/2021 - 03/01/2022



NOTE: SCALES MAY VARY IN EACH GRAPH TO ENABLE TREND COMPARISON. Black line is 7 day moving average adjusted for bank holidays.

(c)

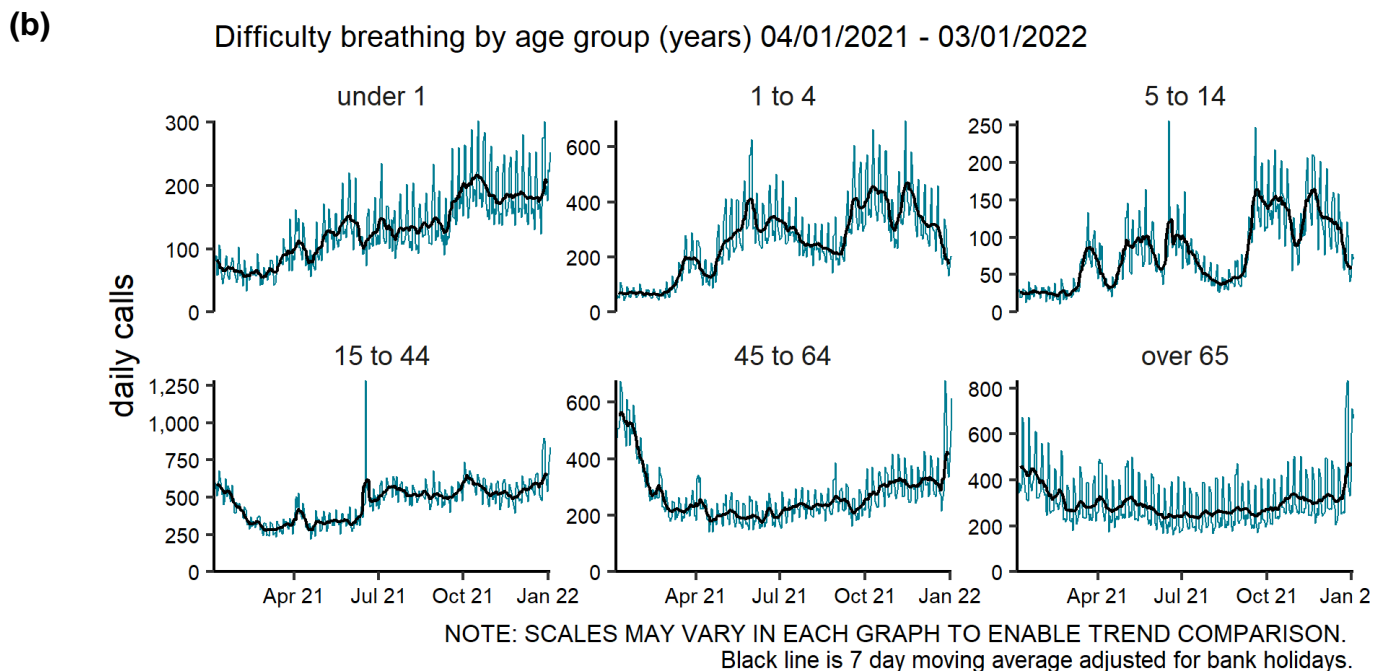
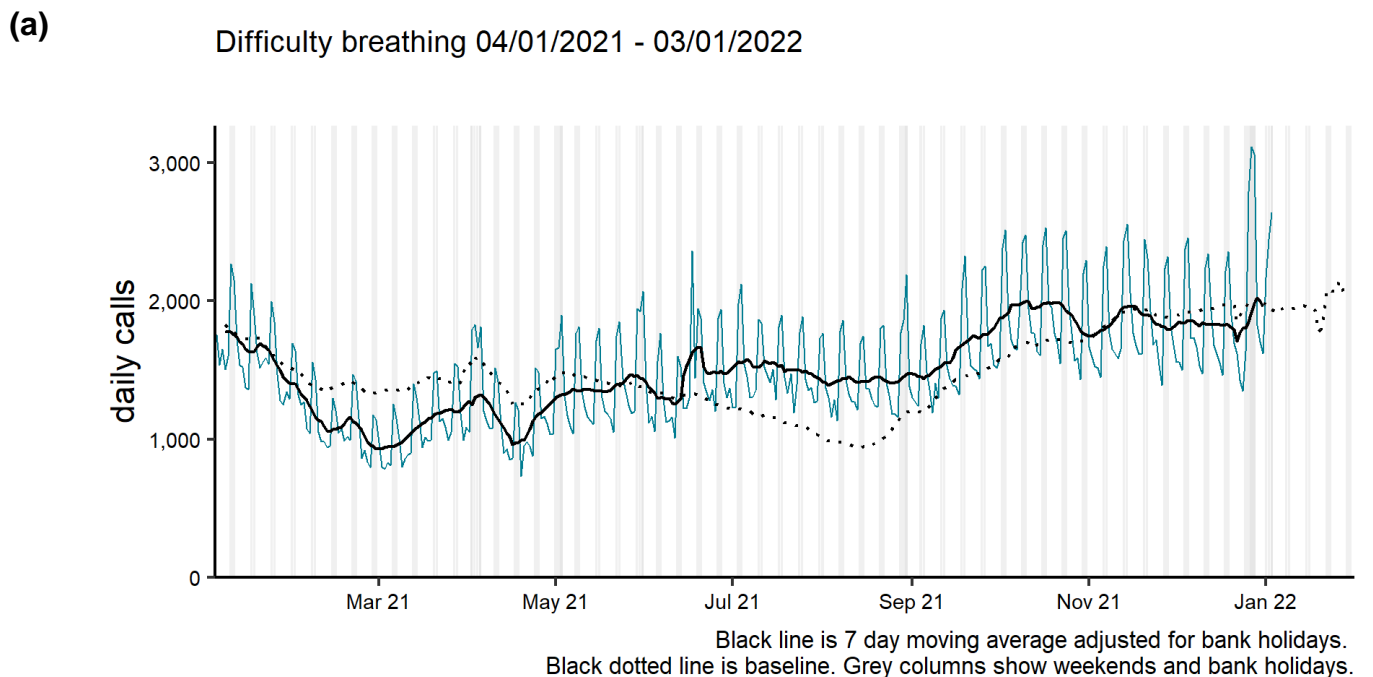
Cough by region 04/01/2021 - 03/01/2022



NOTE: SCALES MAY VARY IN EACH GRAPH TO ENABLE TREND COMPARISON.
Black line is 7 day moving average adjusted for bank holidays.
Black dotted line is baseline.

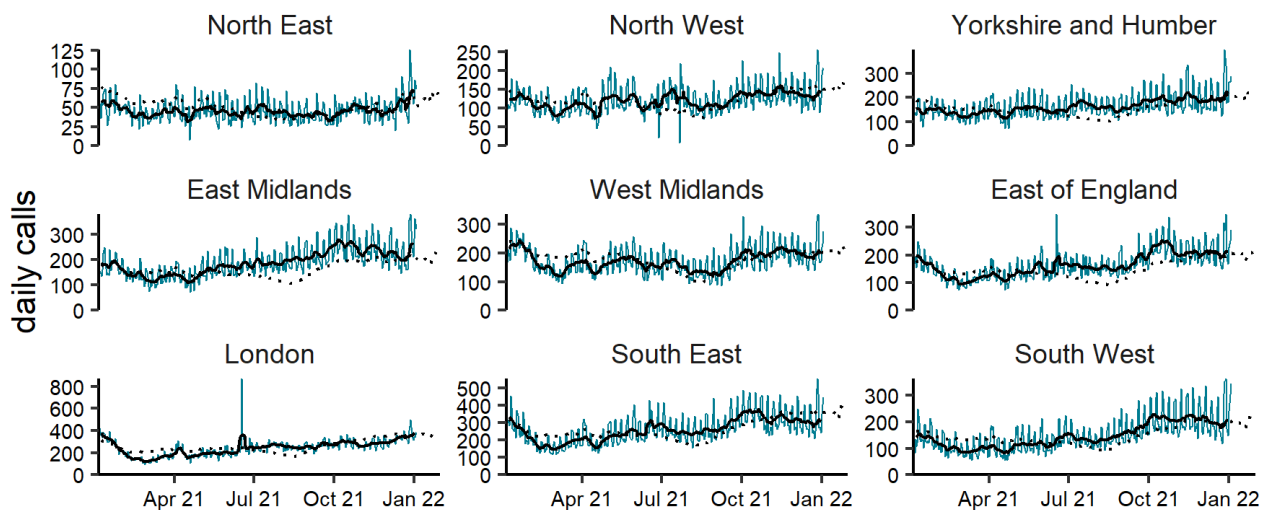
Difficulty breathing NHS 111 calls

Figure 9: Daily number of NHS 111 calls (and 7-day moving average adjusted for bank holidays) for difficulty breathing, England (a) nationally, (b) by age and (c) by UKHSA Region.



(c)

Difficulty breathing by region 04/01/2021 - 03/01/2022

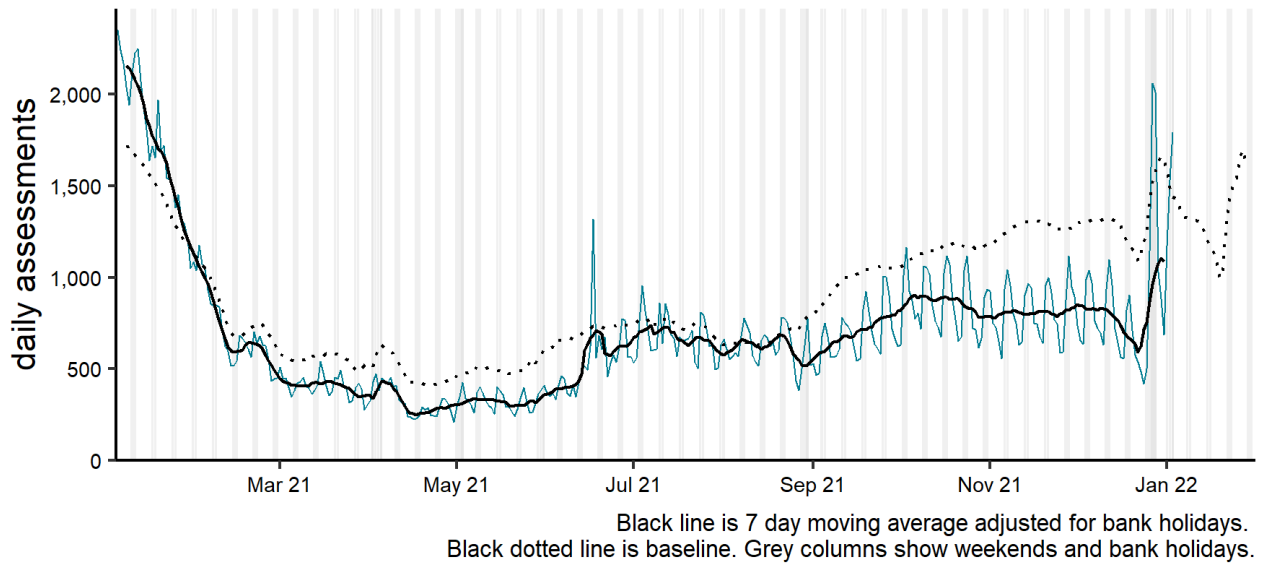


NOTE: SCALES MAY VARY IN EACH GRAPH TO ENABLE TREND COMPARISON.
Black line is 7 day moving average adjusted for bank holidays.
Black dotted line is baseline.

Difficulty breathing NHS 111 online

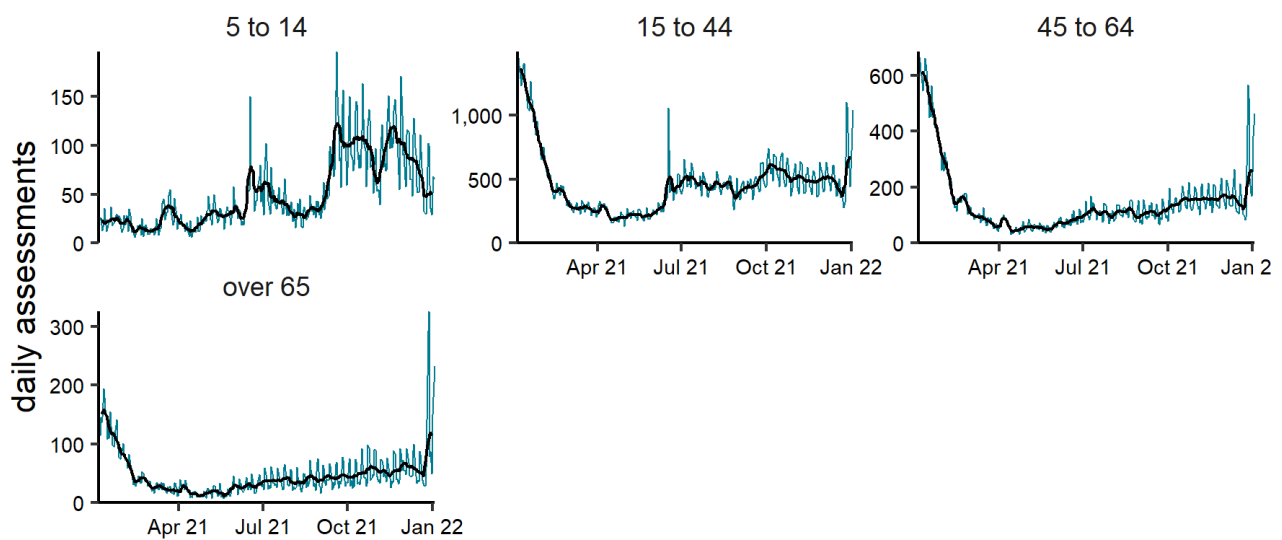
Figure 10: Daily number of completed NHS 111 online assessments (and 7-day moving average adjusted for bank holidays) for difficulty breathing, England (a) nationally, (b) by age and (c) by UKHSA Region.

(a) Difficulty breathing 04/01/2021 - 03/01/2022



Black line is 7 day moving average adjusted for bank holidays. Black dotted line is baseline. Grey columns show weekends and bank holidays.

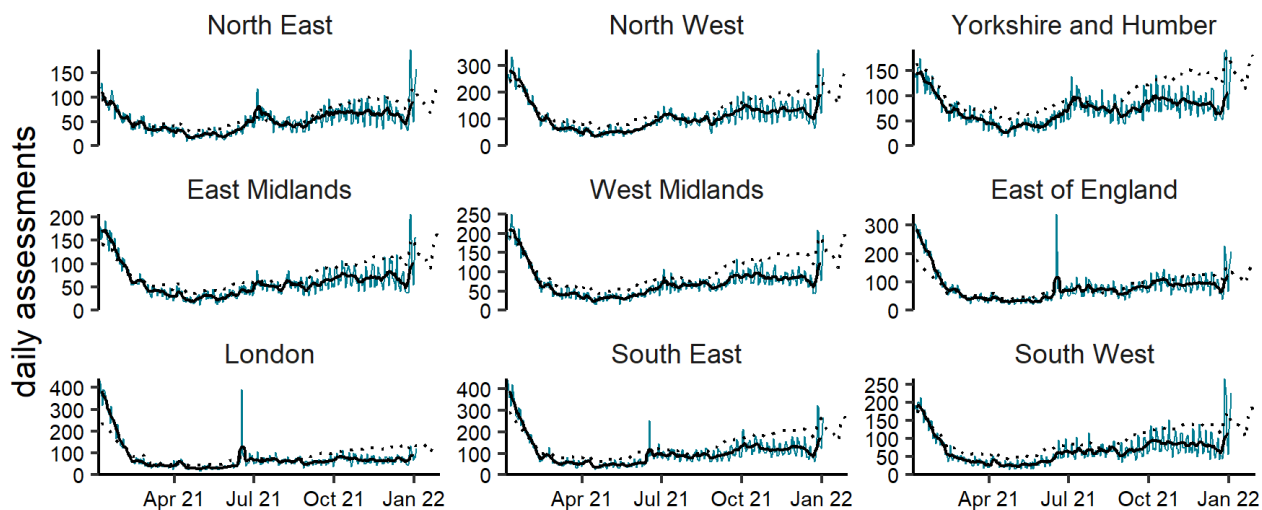
(b) Difficulty breathing by age group (years) 04/01/2021 - 03/01/2022



NOTE: SCALES MAY VARY IN EACH GRAPH TO ENABLE TREND COMPARISON. Black line is 7 day moving average adjusted for bank holidays.

(c)

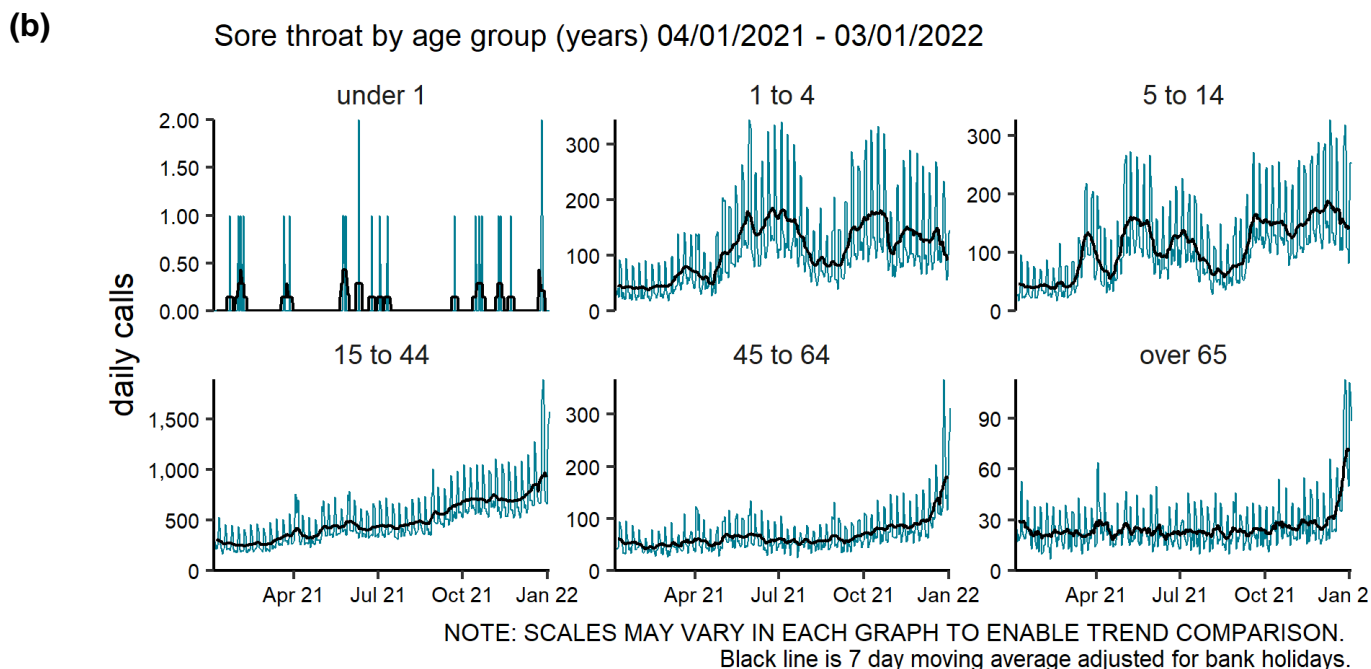
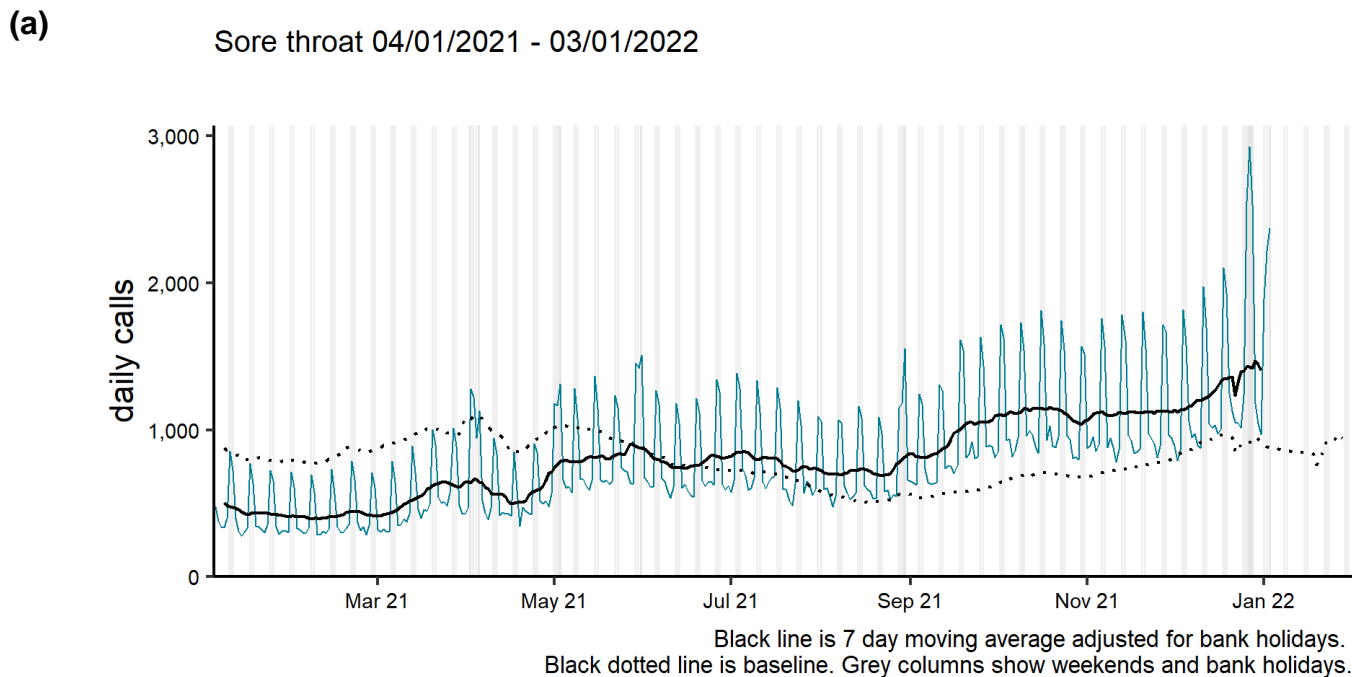
Difficulty breathing by region 04/01/2021 - 03/01/2022



NOTE: SCALES MAY VARY IN EACH GRAPH TO ENABLE TREND COMPARISON.
Black line is 7 day moving average adjusted for bank holidays.
Black dotted line is baseline.

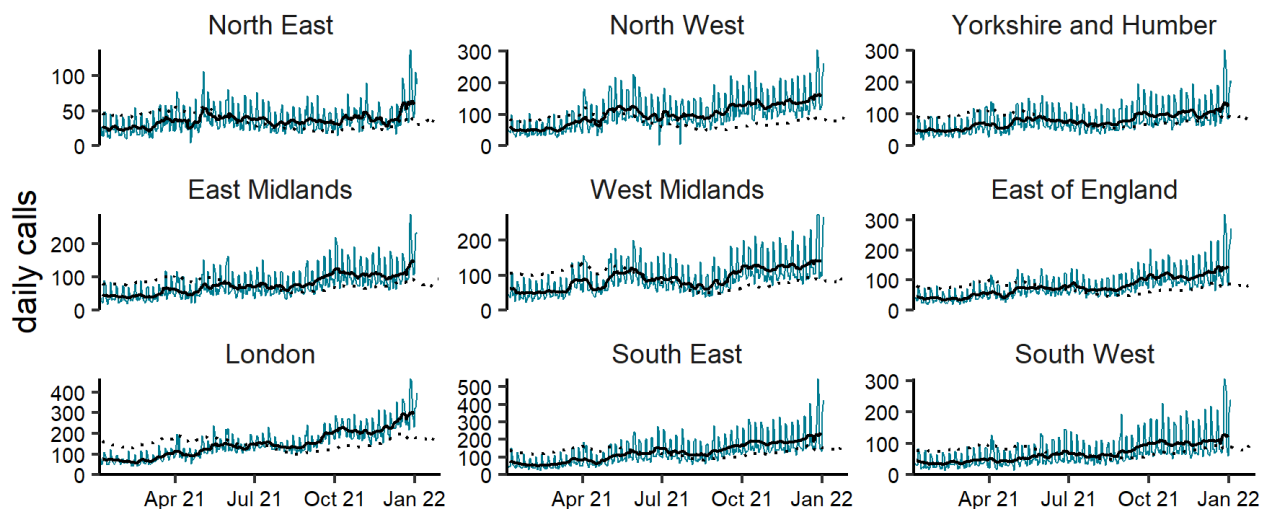
Sore throat NHS 111 calls

Figure 11: Daily number of NHS 111 calls (and 7-day moving average adjusted for bank holidays) for sore throat, England (a) nationally, (b) by age and (c) by UKHSA Region.



(c)

Sore throat by region 04/01/2021 - 03/01/2022

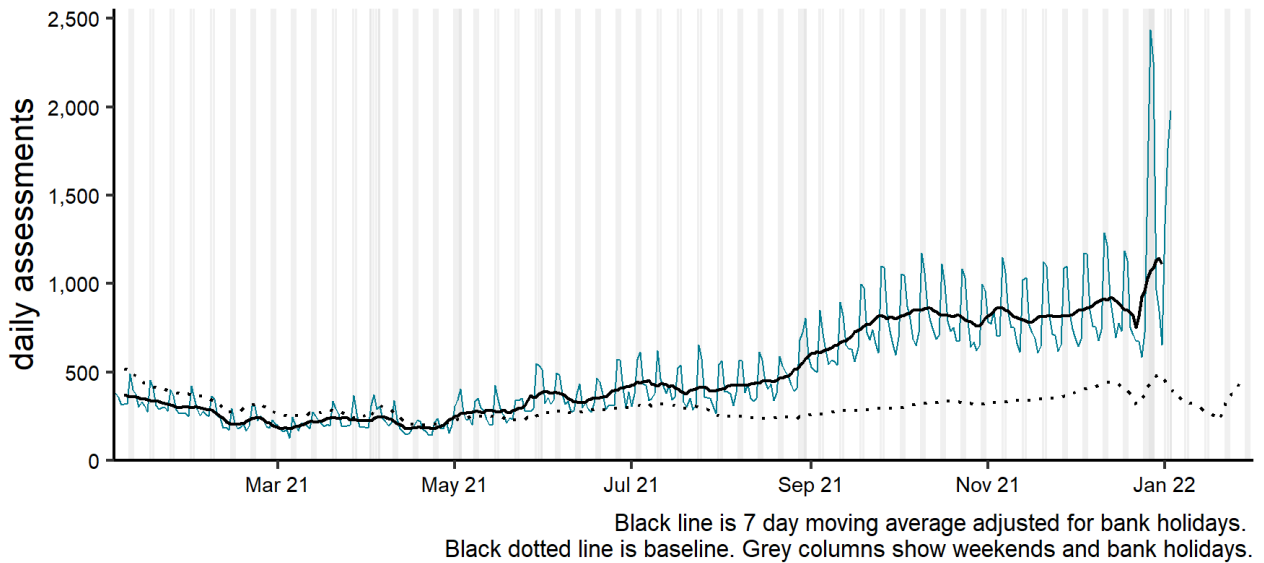


NOTE: SCALES MAY VARY IN EACH GRAPH TO ENABLE TREND COMPARISON.
Black line is 7 day moving average adjusted for bank holidays.
Black dotted line is baseline.

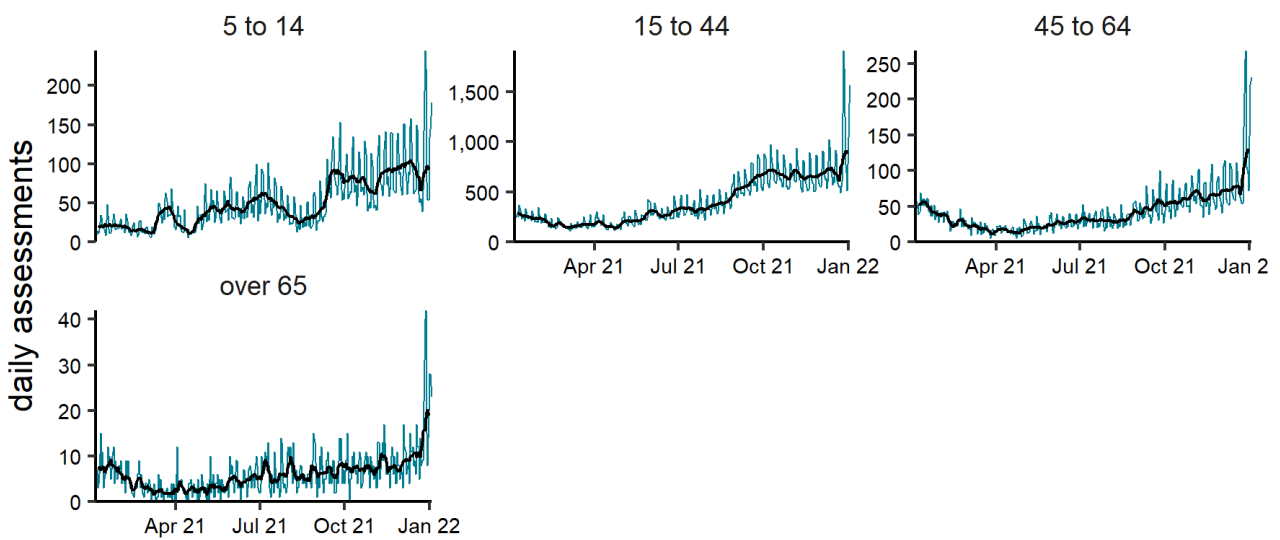
Sore throat NHS 111 online

Figure 12: Daily number of completed NHS 111 online assessments (and 7-day moving average adjusted for bank holidays) for sore throat, England (a) nationally, (b) by age and (c) by UKHSA Region.

(a) Sore throat 04/01/2021 - 03/01/2022

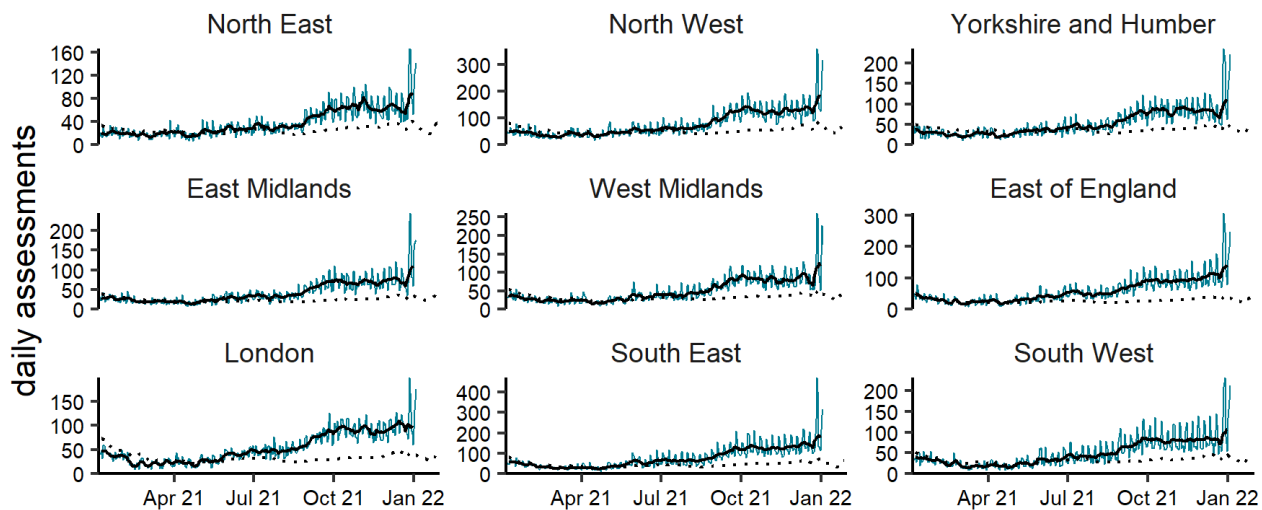


(b) Sore throat by age group (years) 04/01/2021 - 03/01/2022



(c)

Sore throat by region 04/01/2021 - 03/01/2022

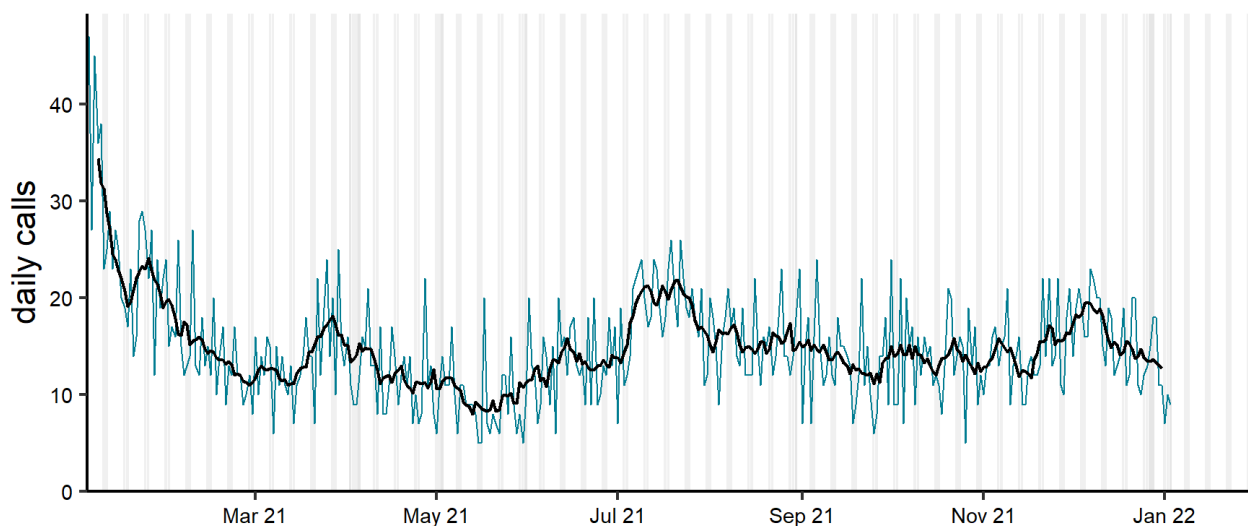


NOTE: SCALES MAY VARY IN EACH GRAPH TO ENABLE TREND COMPARISON.
Black line is 7 day moving average adjusted for bank holidays.
Black dotted line is baseline.

Loss of taste or smell NHS 111 calls

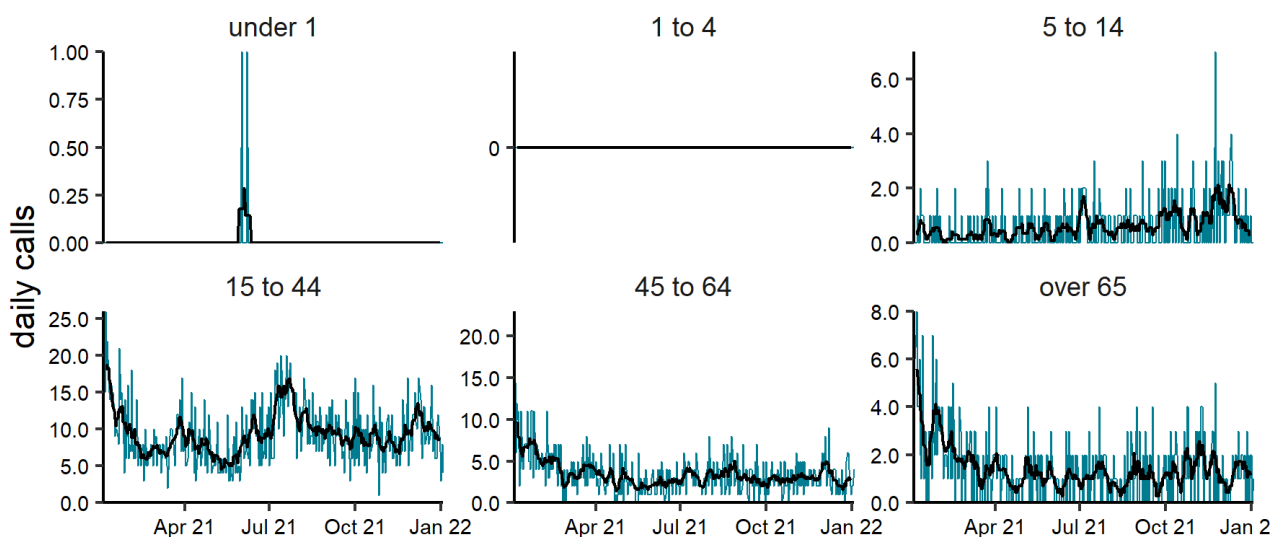
Figure 13: Daily number of NHS 111 calls (and 7-day moving average adjusted for bank holidays) for loss of taste or smell, England (a) nationally, (b) by age and (c) by UKHSA Region.

(a) Loss of taste or smell 04/01/2021 - 03/01/2022



Black line is 7 day moving average adjusted for bank holidays. Grey columns show weekends and bank holidays.

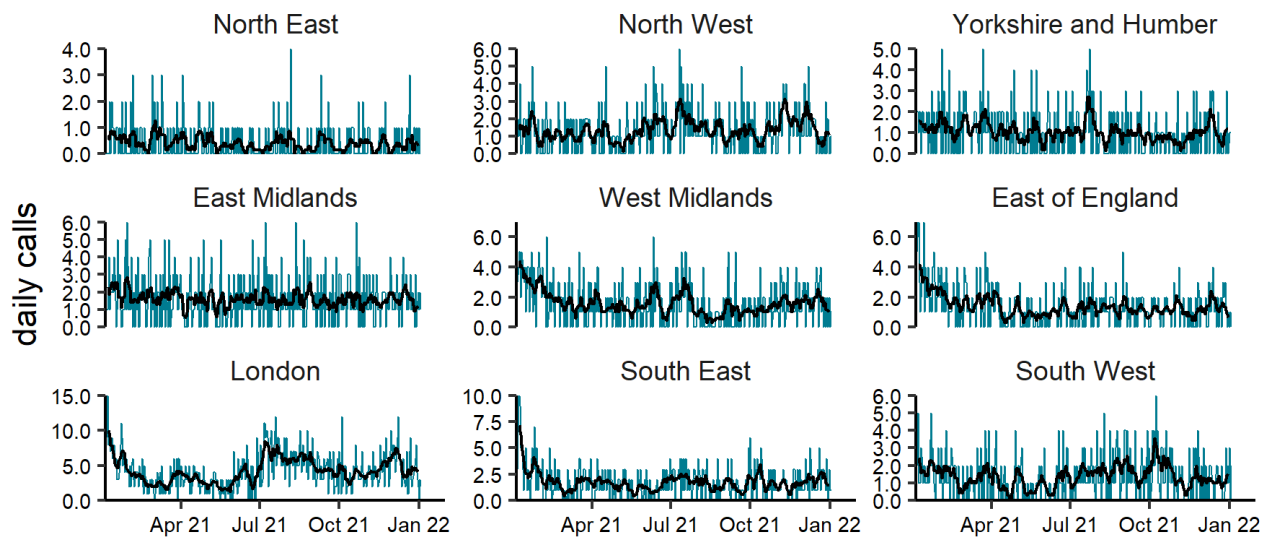
(b) Loss of taste or smell by age group (years) 04/01/2021 - 03/01/2022



NOTE: SCALES MAY VARY IN EACH GRAPH TO ENABLE TREND COMPARISON.
Black line is 7 day moving average adjusted for bank holidays.

(c)

Loss of taste or smell by region 04/01/2021 - 03/01/2022

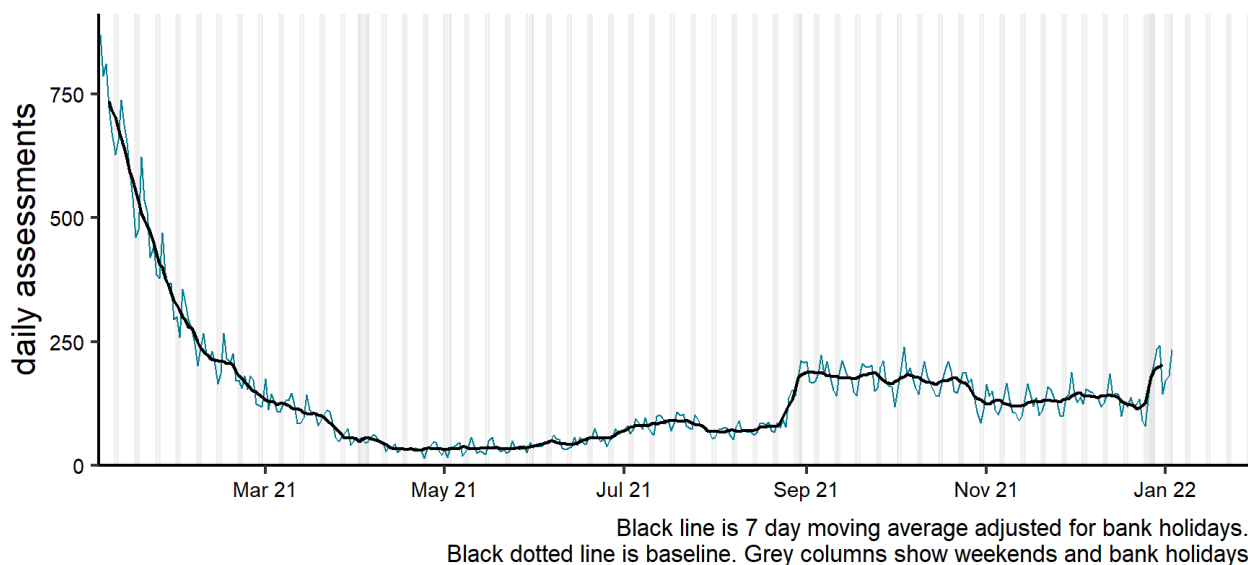


NOTE: SCALES MAY VARY IN EACH GRAPH TO ENABLE TREND COMPARISON.
Black line is 7 day moving average adjusted for bank holidays.

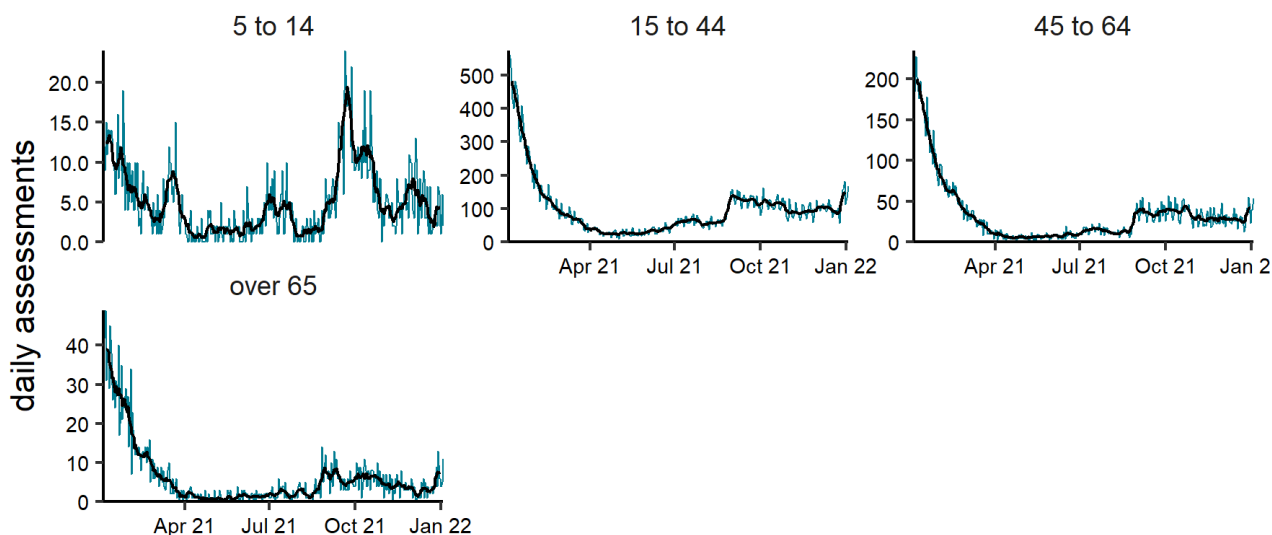
Loss of taste or smell NHS 111 online

Figure 14: Daily number of completed NHS 111 online assessments (and 7-day moving average adjusted for bank holidays) for loss of taste or smell, England (a) nationally, (b) by age and (c) by UKHSA Region.

(a) Loss of taste or smell 04/01/2021 - 03/01/2022

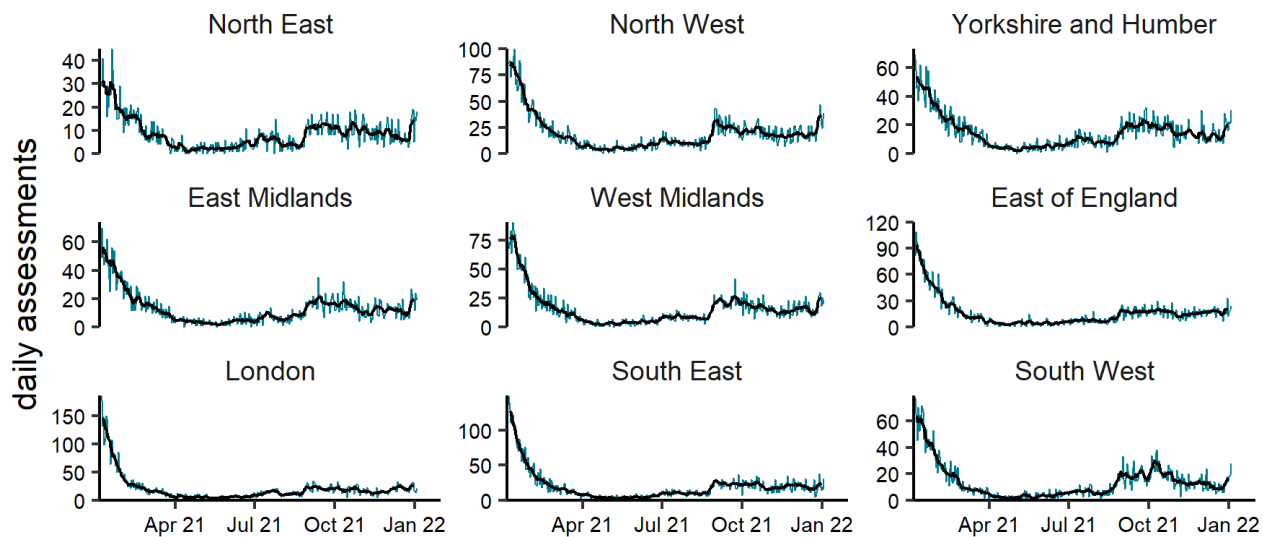


(b) Loss of taste or smell by age group (years) 04/01/2021 - 03/01/2022



NOTE: SCALES MAY VARY IN EACH GRAPH TO ENABLE TREND COMPARISON.
Black line is 7 day moving average adjusted for bank holidays.

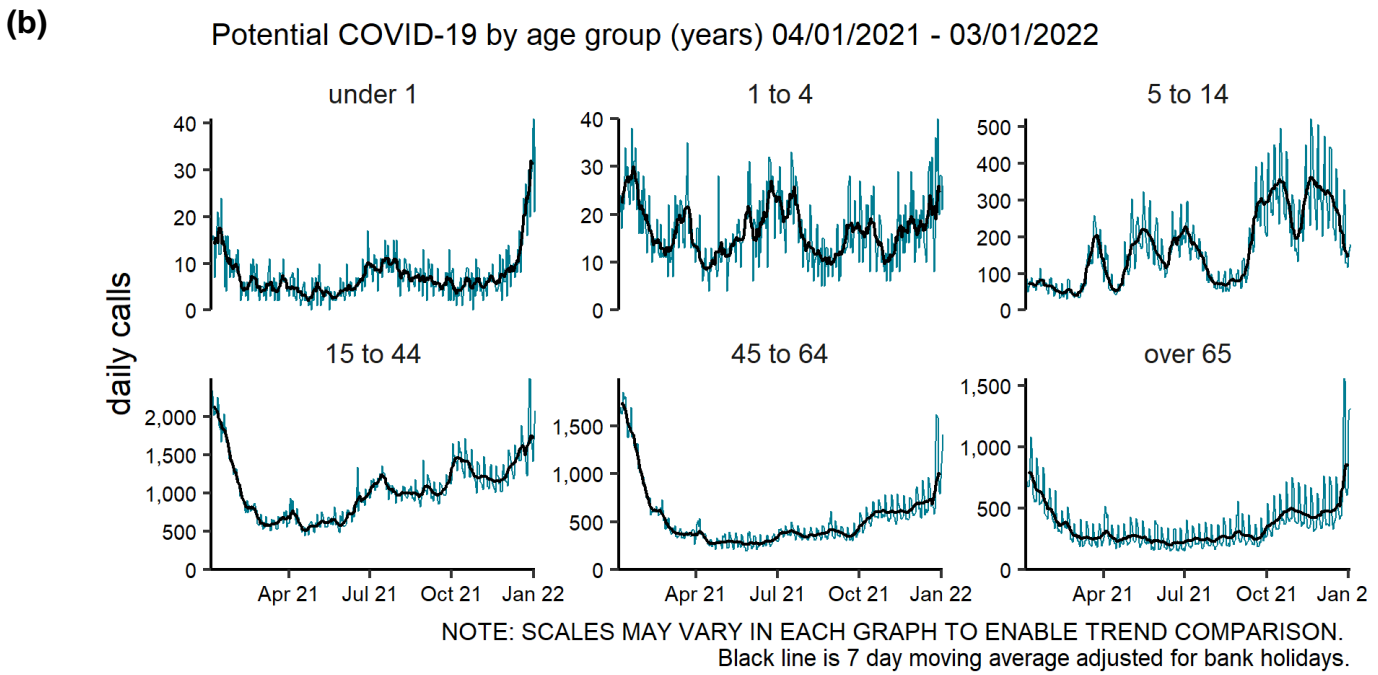
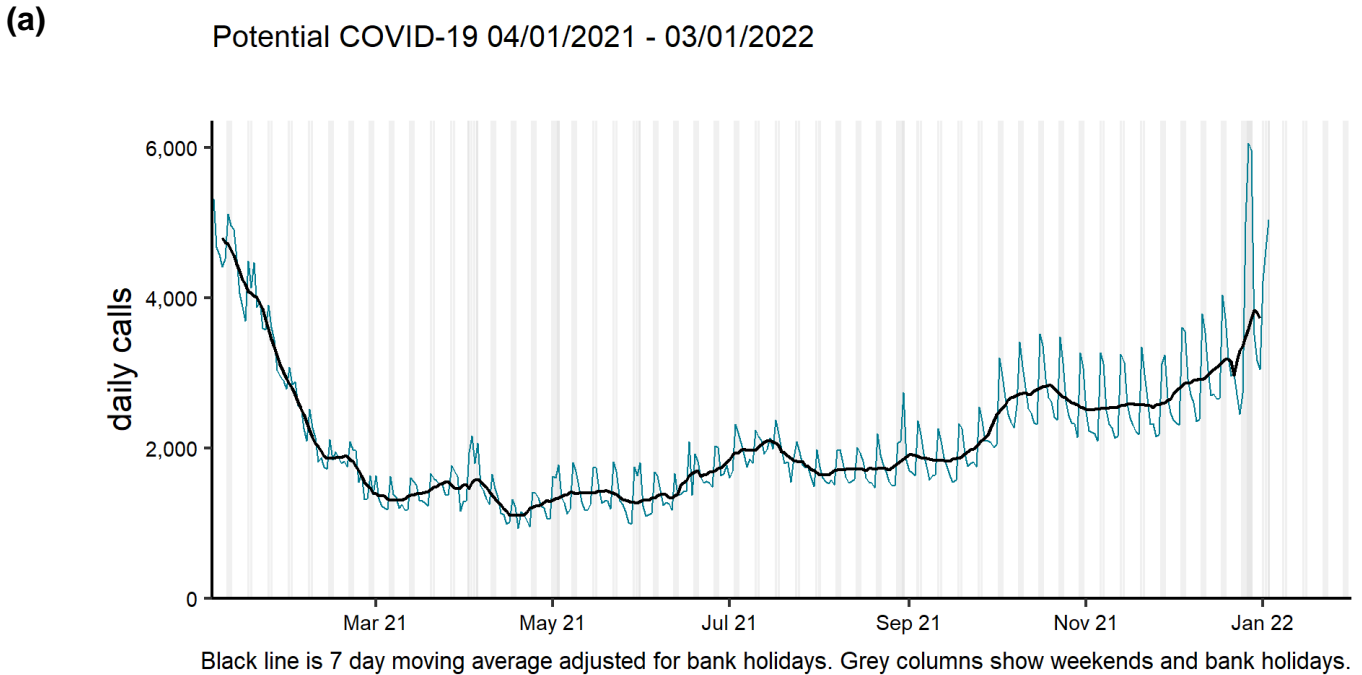
(c) Loss of taste or smell by region 04/01/2021 - 03/01/2022



NOTE: SCALES MAY VARY IN EACH GRAPH TO ENABLE TREND COMPARISON.
Black line is 7 day moving average adjusted for bank holidays.

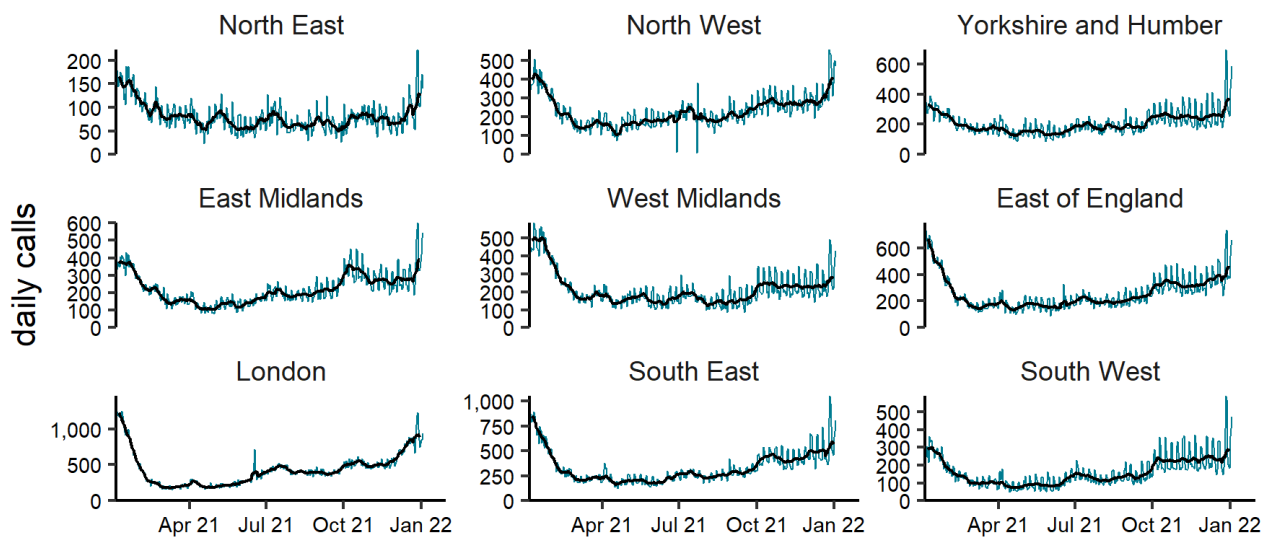
Potential COVID-19 NHS 111 calls

Figure 15: Daily number of NHS 111 calls (and 7-day moving average adjusted for bank holidays) for potential COVID-19, England (a) nationally, (b) by age and (c) by UKHSA Region.



(c)

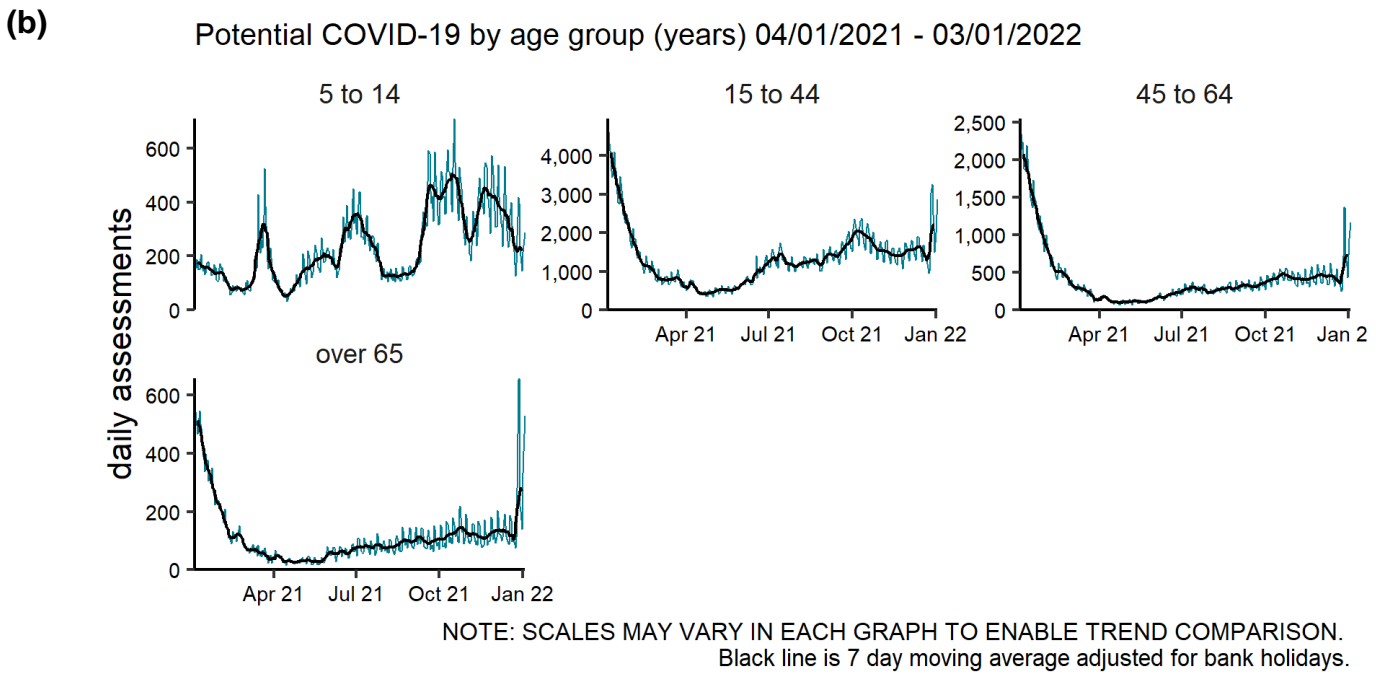
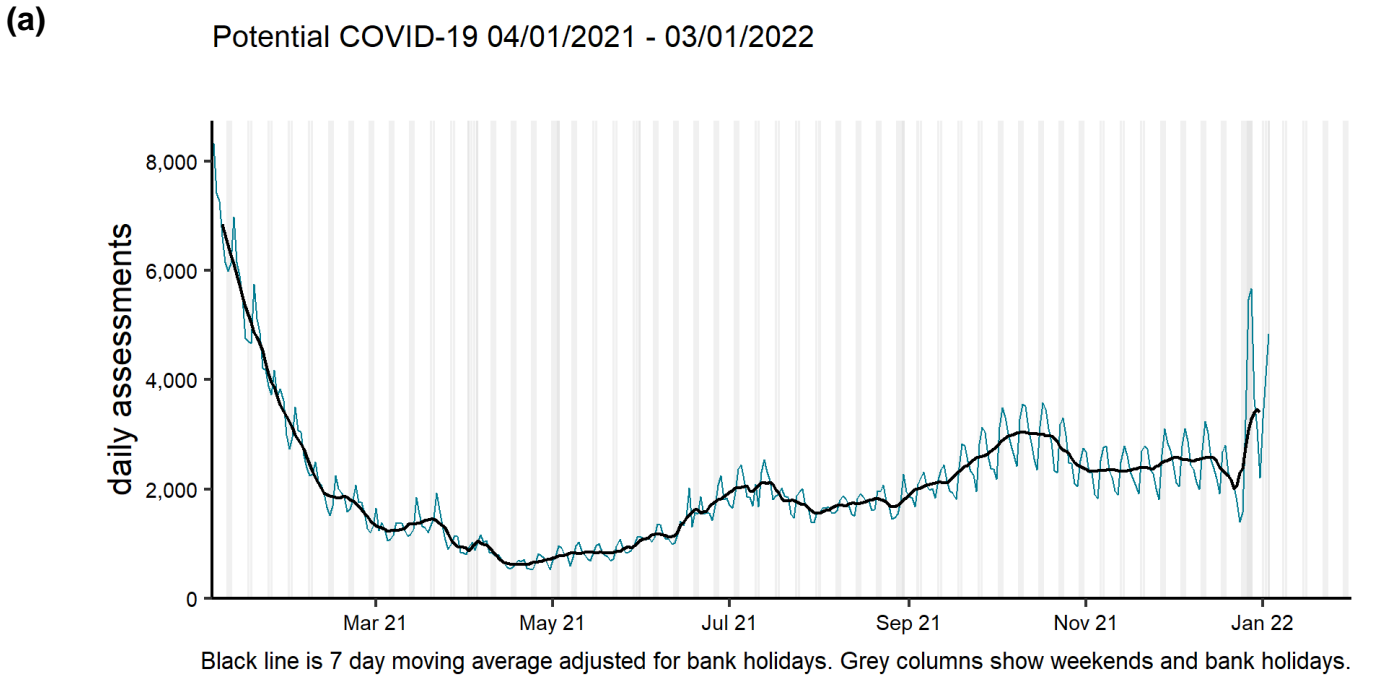
Potential COVID-19 by region 04/01/2021 - 03/01/2022



NOTE: SCALES MAY VARY IN EACH GRAPH TO ENABLE TREND COMPARISON.
Black line is 7 day moving average adjusted for bank holidays.

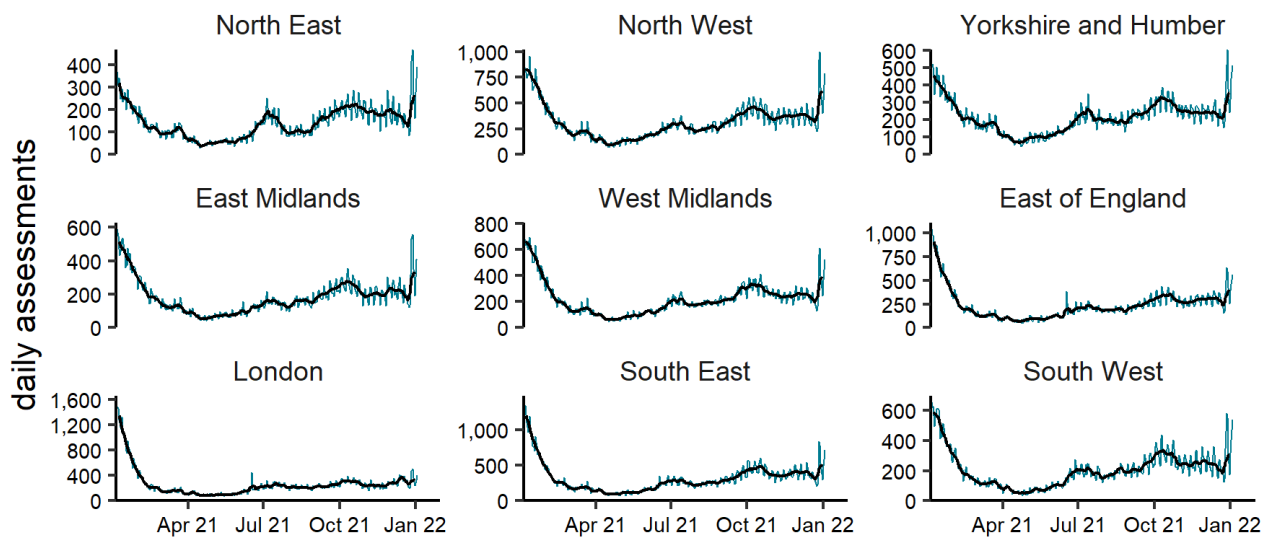
Potential COVID-19 NHS 111 online

Figure 16: Daily number of completed NHS 111 online assessments (and 7-day moving average adjusted for bank holidays) for potential COVID-19, England (a) nationally, (b) by age and (c) by UKHSA Region.



(c)

Potential COVID-19 by region 04/01/2021 - 03/01/2022



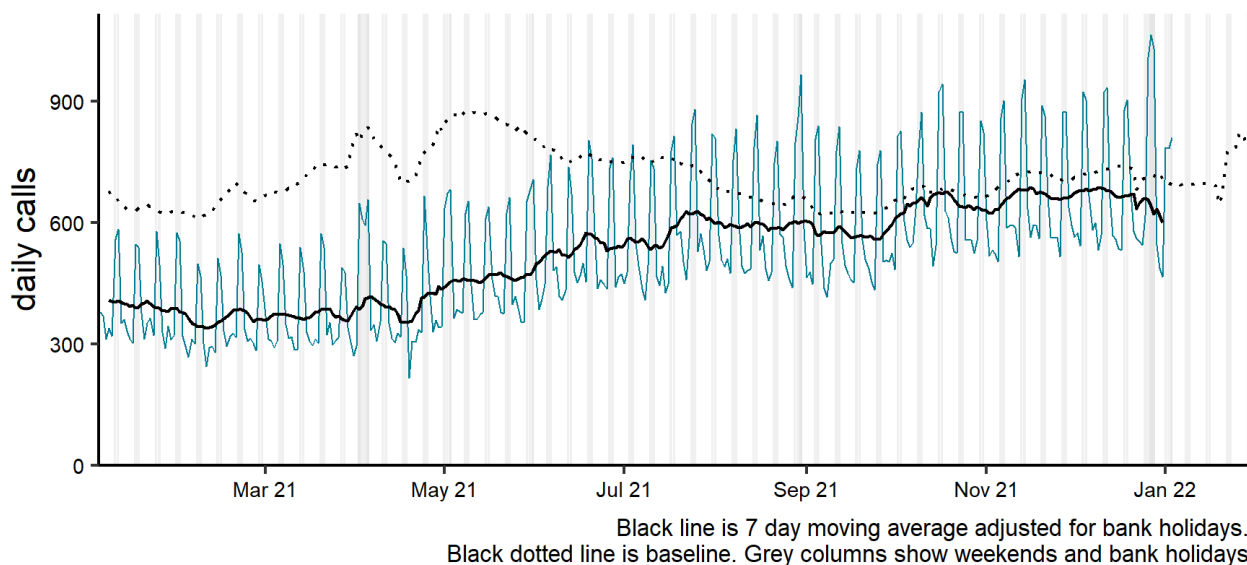
NOTE: SCALES MAY VARY IN EACH GRAPH TO ENABLE TREND COMPARISON.
Black line is 7 day moving average adjusted for bank holidays.

Gastrointestinal conditions

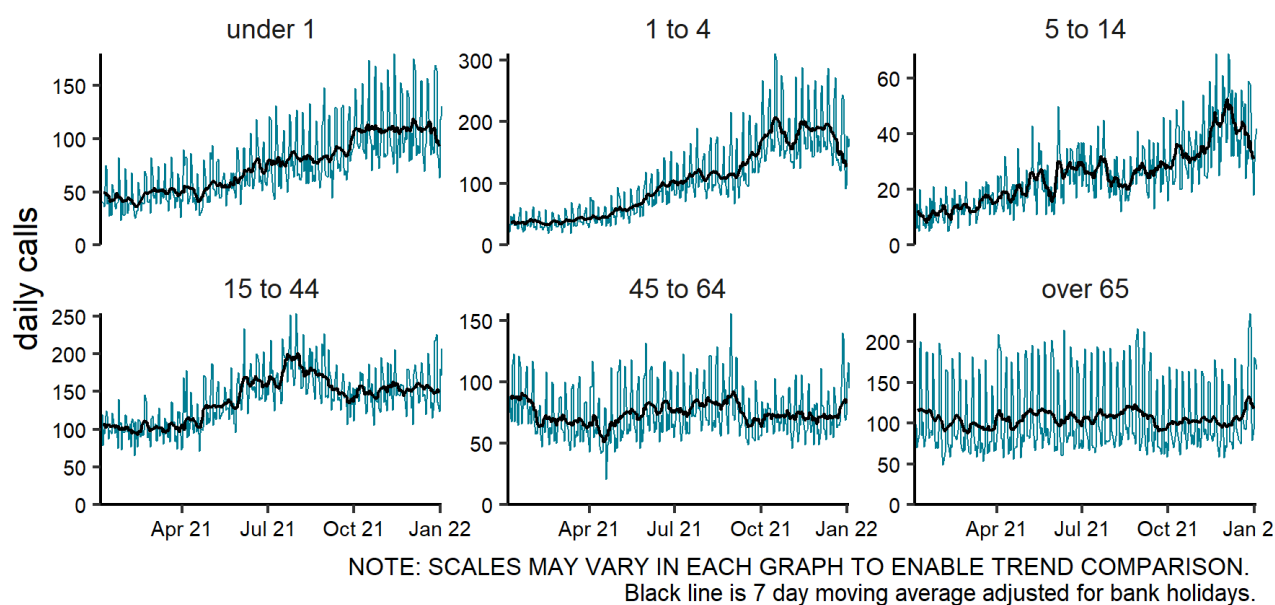
Diarrhoea NHS 111 calls

Figure 17: Daily number of NHS 111 calls (and 7-day moving average adjusted for bank holidays) for diarrhoea, England (a) nationally, (b) by age and (c) by UKHSA Region.

(a) Diarrhoea 04/01/2021 - 03/01/2022

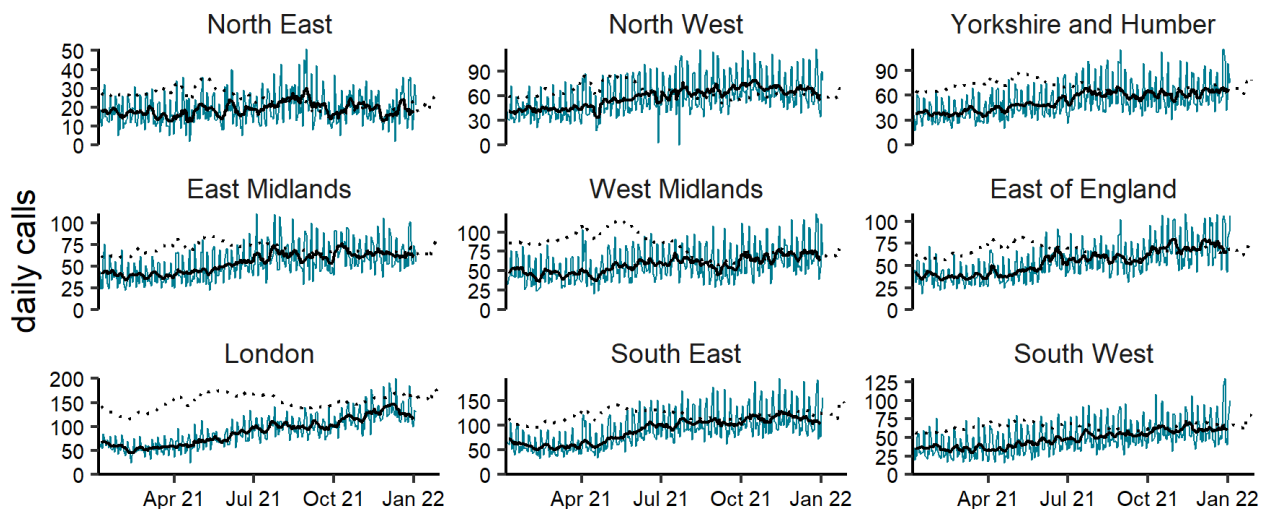


(b) Diarrhoea by age group (years) 04/01/2021 - 03/01/2022



(c)

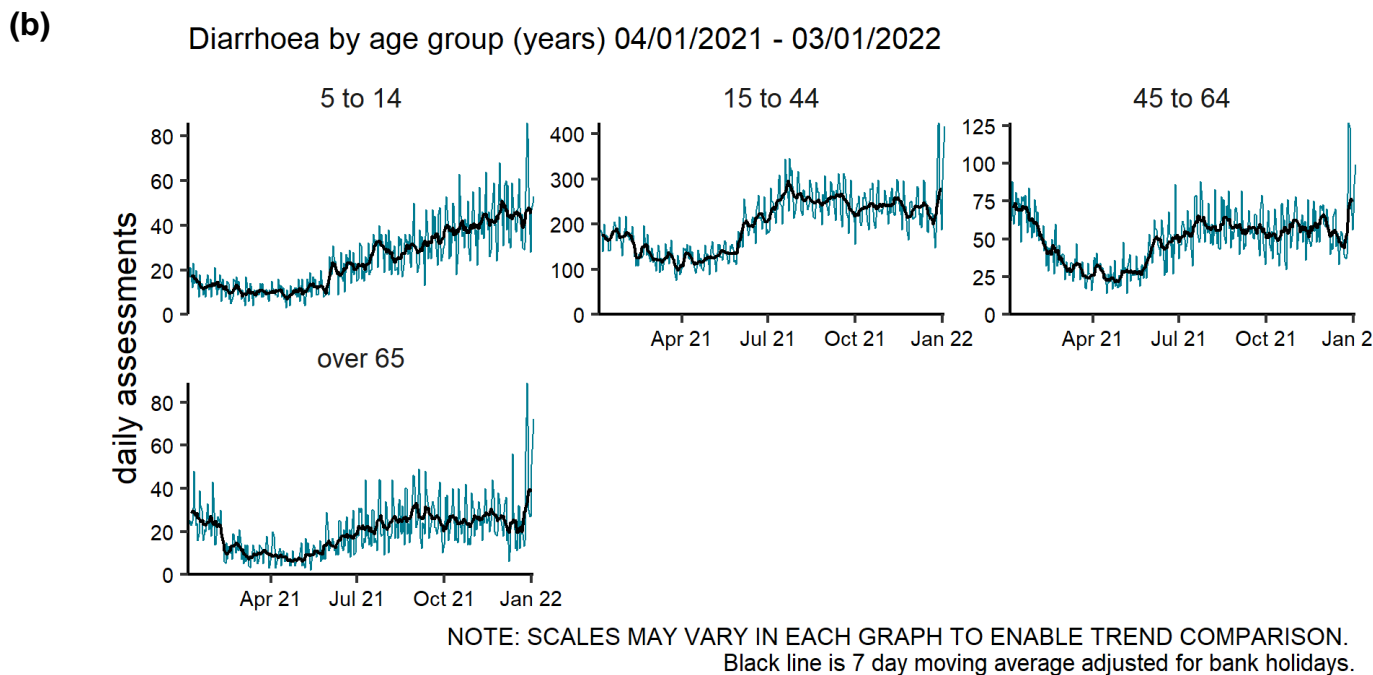
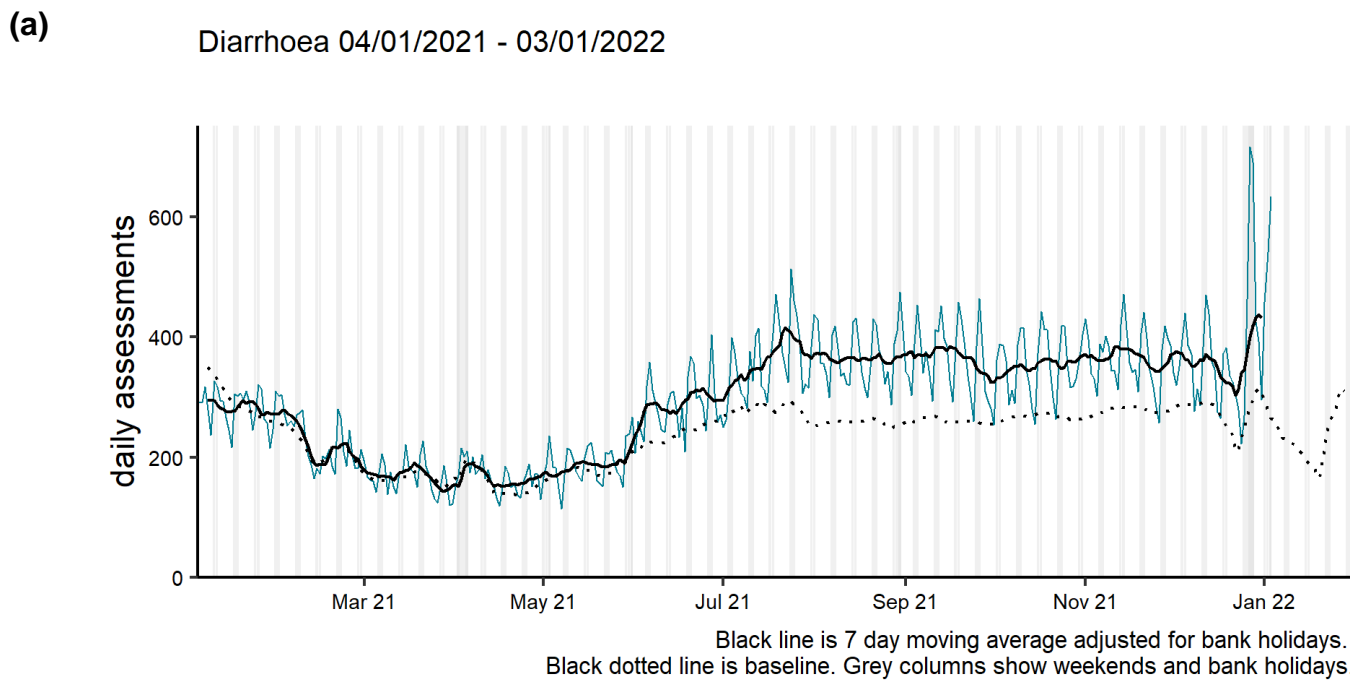
Diarrhoea by region 04/01/2021 - 03/01/2022



NOTE: SCALES MAY VARY IN EACH GRAPH TO ENABLE TREND COMPARISON.
Black line is 7 day moving average adjusted for bank holidays.
Black dotted line is baseline.

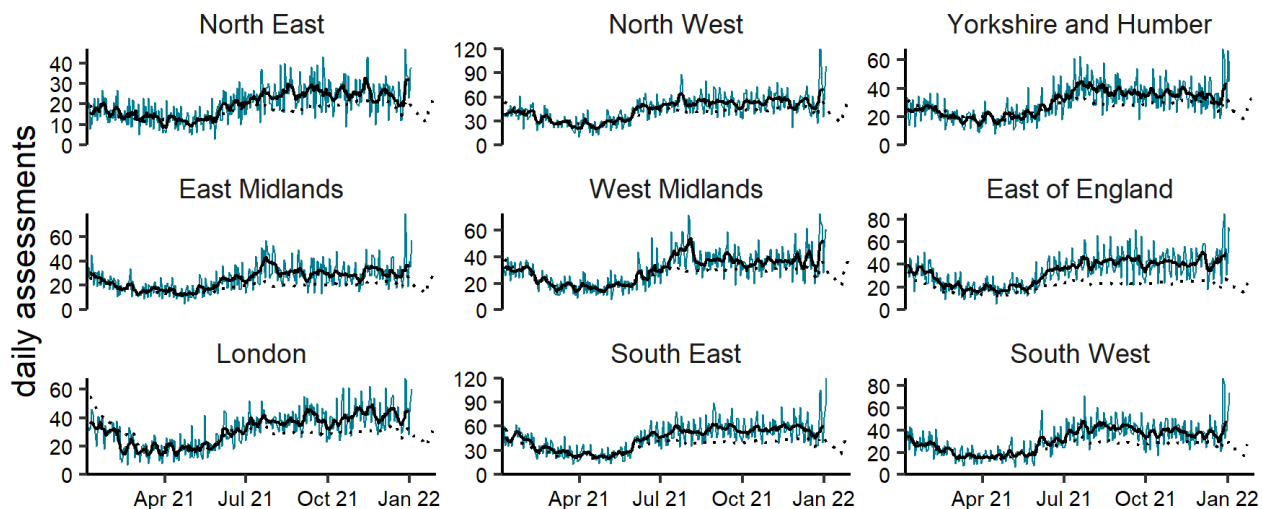
Diarrhoea NHS 111 online

Figure 18: Daily number of completed NHS 111 online assessments (and 7-day moving average adjusted for bank holidays) for diarrhoea, England (a) nationally, (b) by age and (c) by UKHSA Region.



(c)

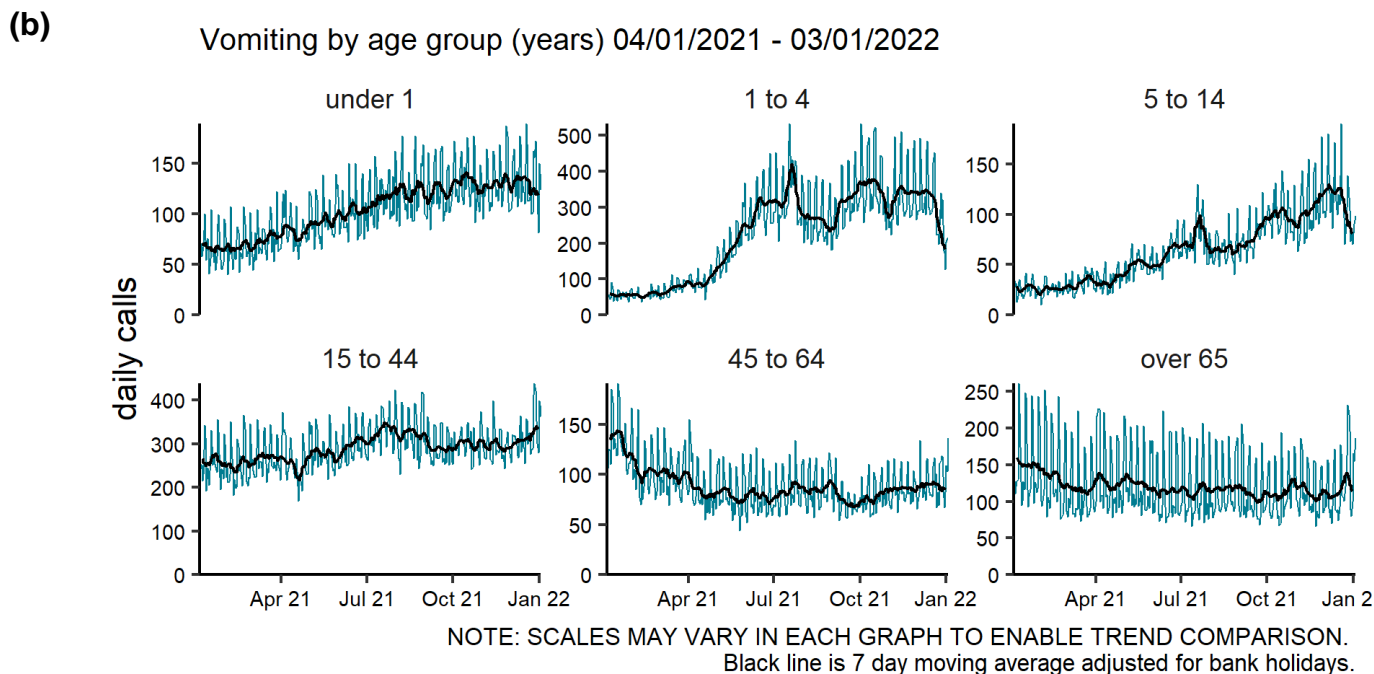
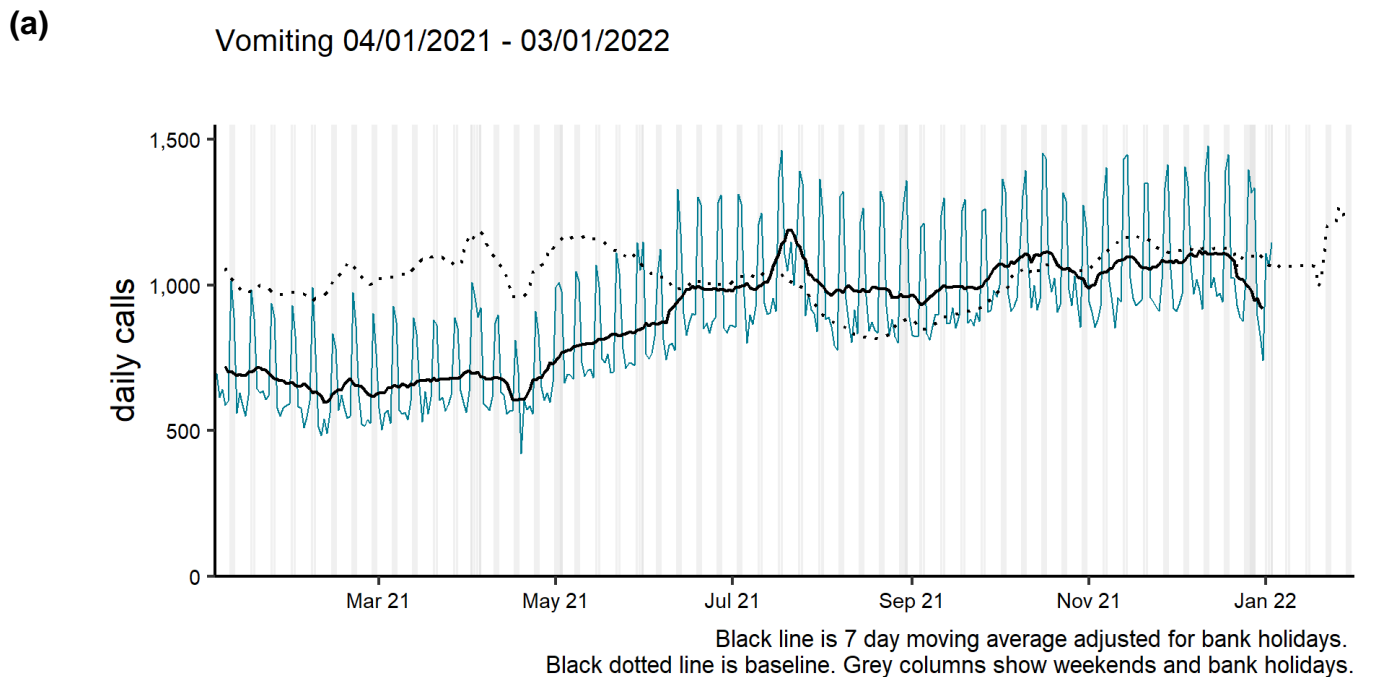
Diarrhoea by region 04/01/2021 - 03/01/2022



NOTE: SCALES MAY VARY IN EACH GRAPH TO ENABLE TREND COMPARISON.
Black line is 7 day moving average adjusted for bank holidays.
Black dotted line is baseline.

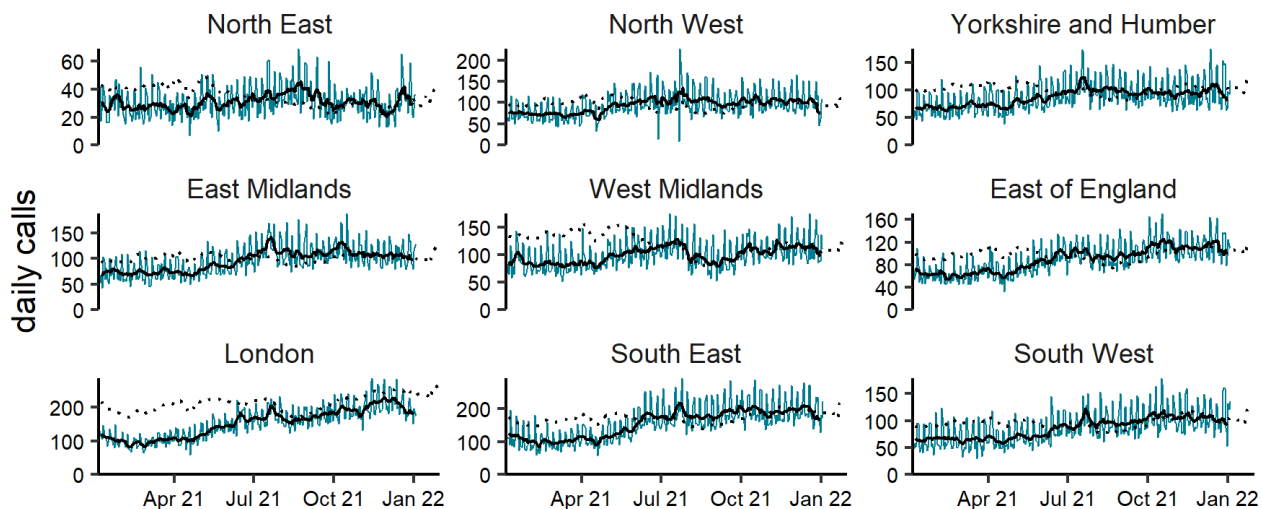
Vomiting NHS 111 calls

Figure 19: Daily number of NHS 111 calls (and 7-day moving average adjusted for bank holidays) for vomiting, England (a) nationally, (b) by age and (c) by UKHSA Region.



(c)

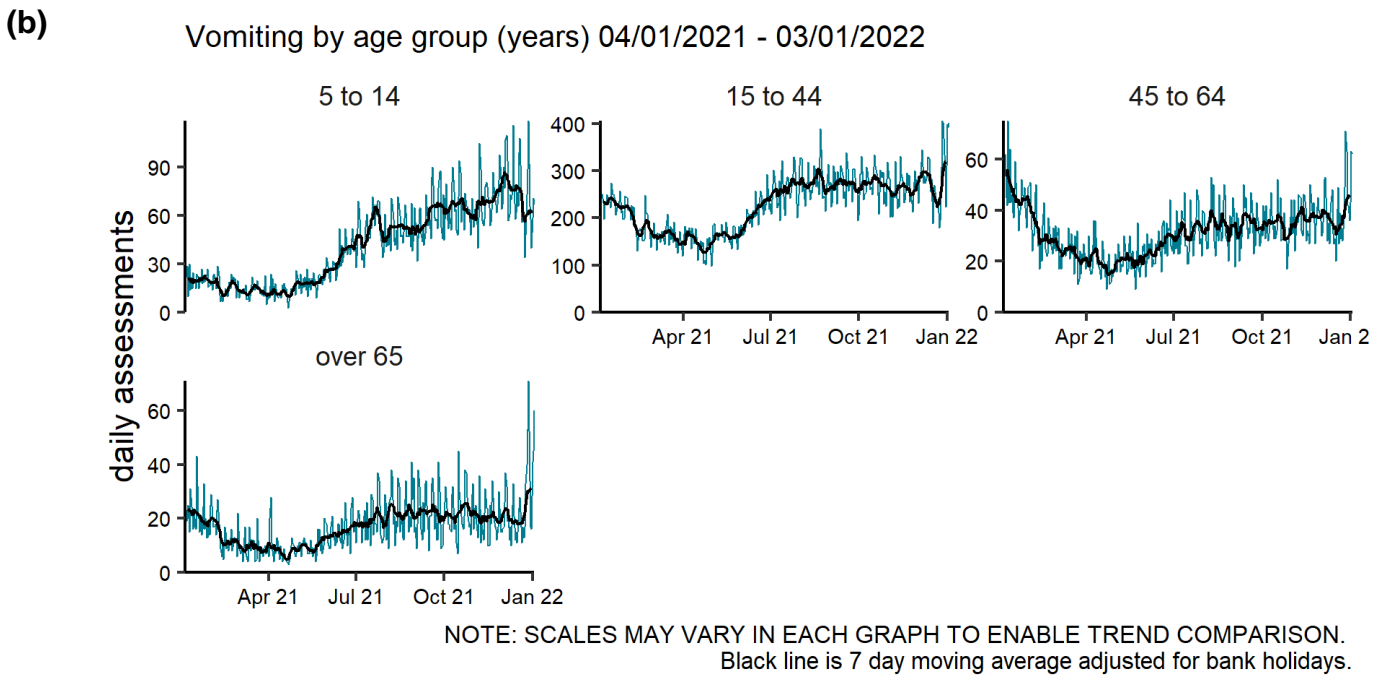
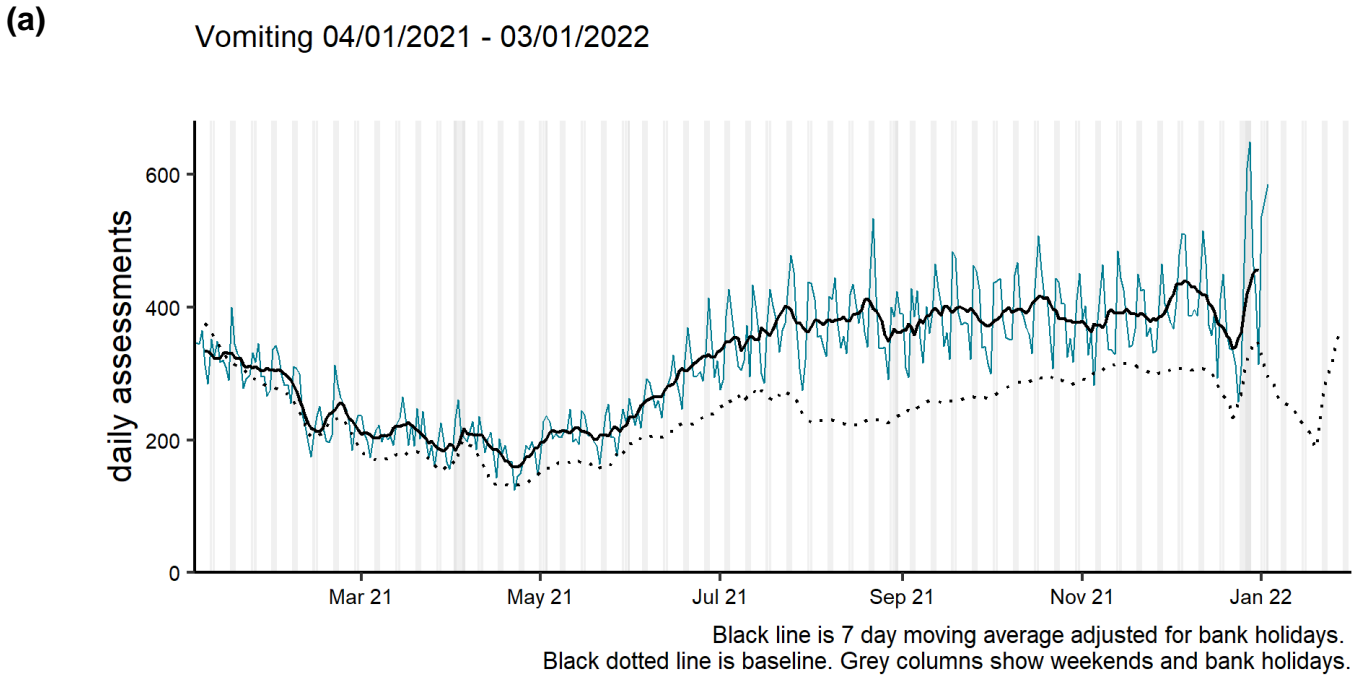
Vomiting by region 04/01/2021 - 03/01/2022



NOTE: SCALES MAY VARY IN EACH GRAPH TO ENABLE TREND COMPARISON.
Black line is 7 day moving average adjusted for bank holidays.
Black dotted line is baseline.

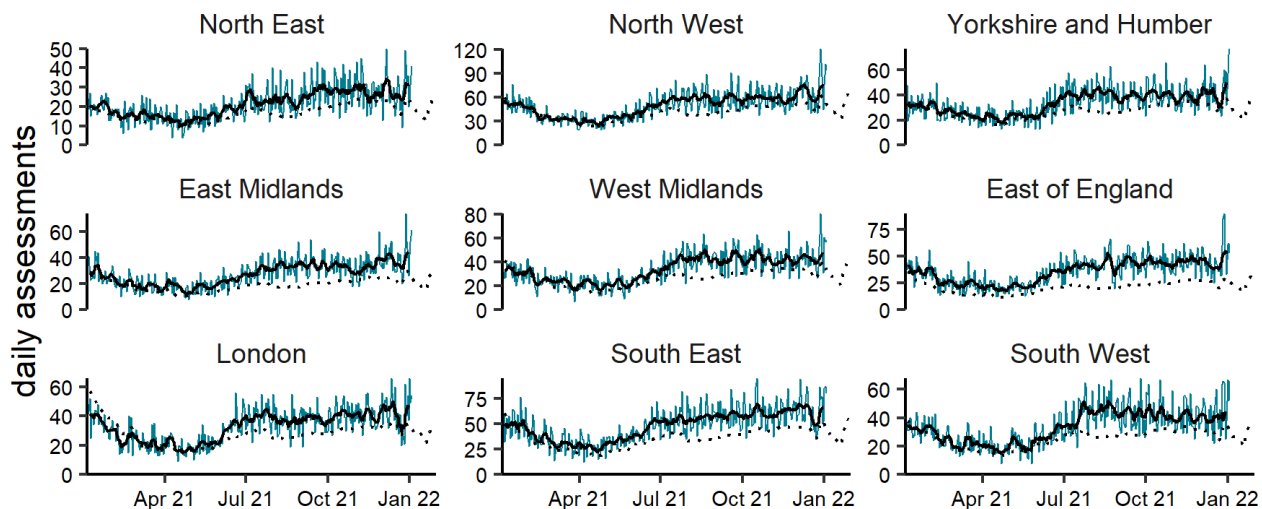
Vomiting NHS 111 online

Figure 20: Daily number of completed NHS 111 online assessments (and 7-day moving average adjusted for bank holidays) for vomiting, England (a) nationally, (b) by age and (c) by UKHSA Region.



(c)

Vomiting by region 04/01/2021 - 03/01/2022



NOTE: SCALES MAY VARY IN EACH GRAPH TO ENABLE TREND COMPARISON.
Black line is 7 day moving average adjusted for bank holidays.
Black dotted line is baseline.

Seasonal environmental conditions

During set periods of the year the Met Office operates both heat and cold weather watch systems, in association with UKHSA. Syndromic indicators are used to monitor the impact of both extreme hot and cold weather in England during these periods and will be included below (where an appropriate syndromic indicator is available).

[Cold weather alert](#) period: 1 November to 31 March

[Heat-Health Alert](#) period: 1 June to 15 September

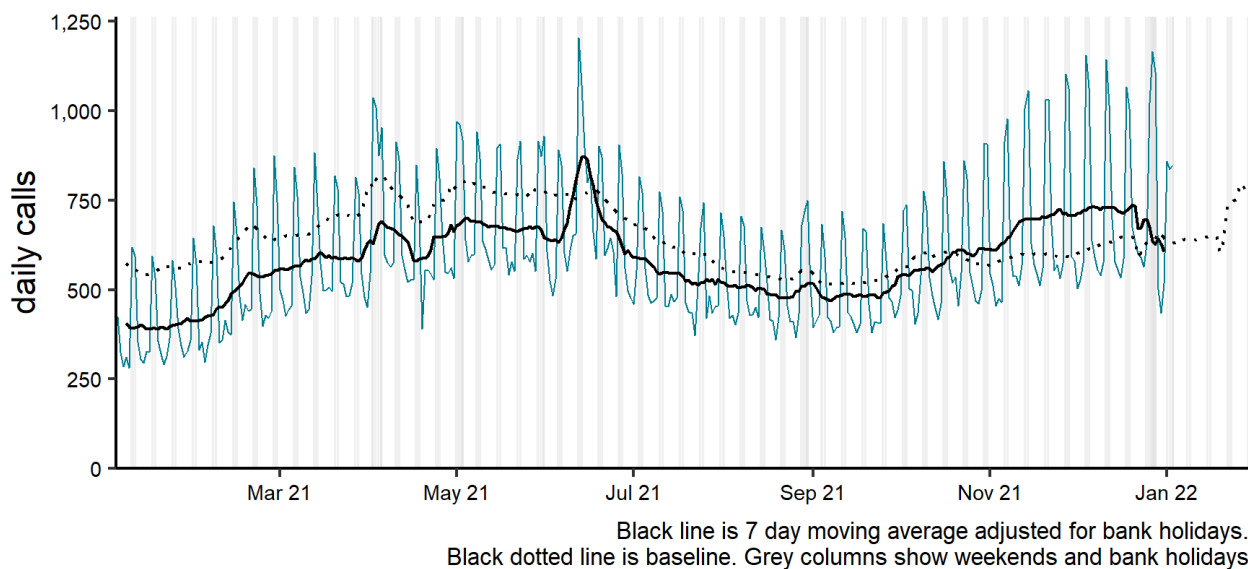
Highest weather alert level during the current reporting week:

Level 2 – Alert and readiness

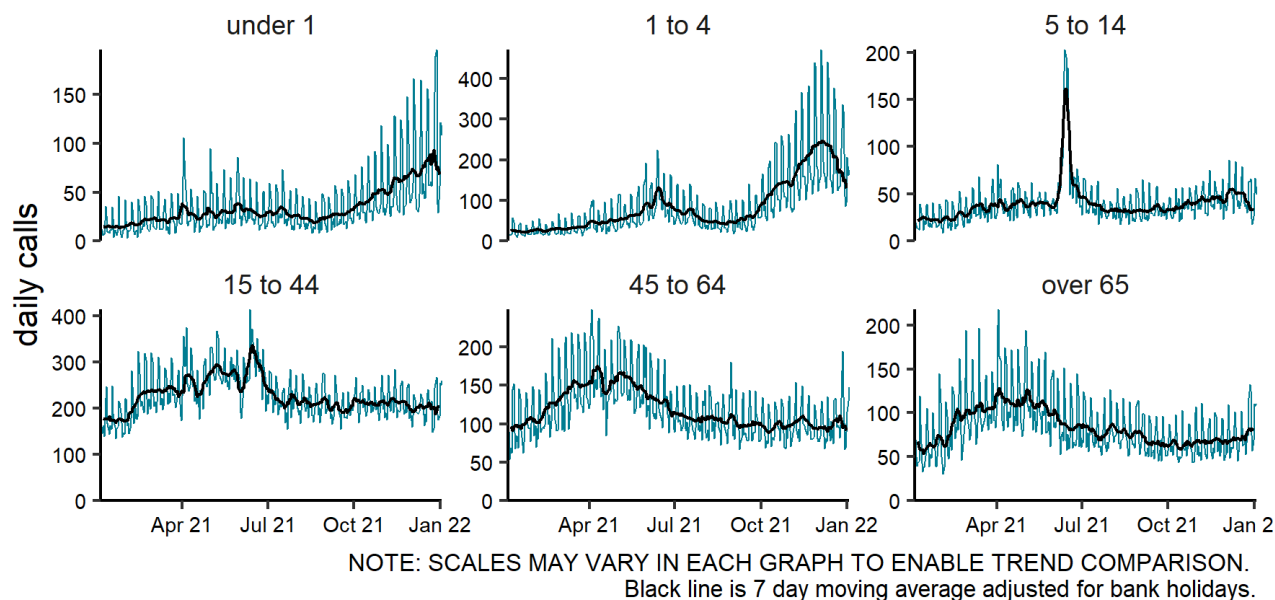
Eye problems NHS 111 calls

Figure 21: Daily number of NHS 111 calls (and 7-day moving average adjusted for bank holidays) for eye problems, England (a) nationally, (b) by age and (c) by UKHSA Region.

(a) Eye problems 04/01/2021 - 03/01/2022

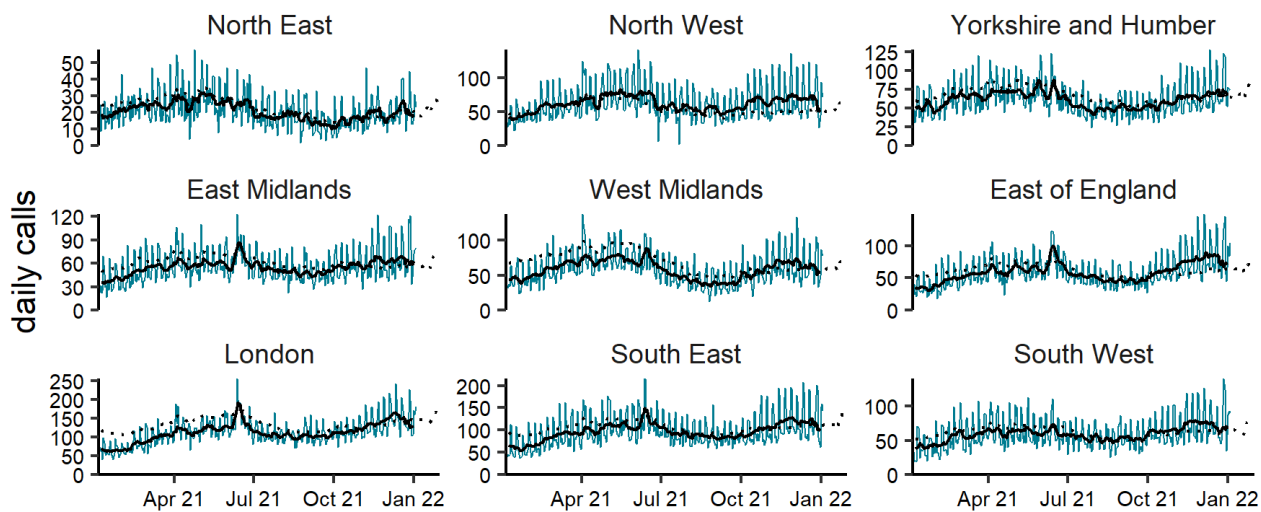


(b) Eye problems by age group (years) 04/01/2021 - 03/01/2022



(c)

Eye problems by region 04/01/2021 - 03/01/2022



NOTE: SCALES MAY VARY IN EACH GRAPH TO ENABLE TREND COMPARISON.

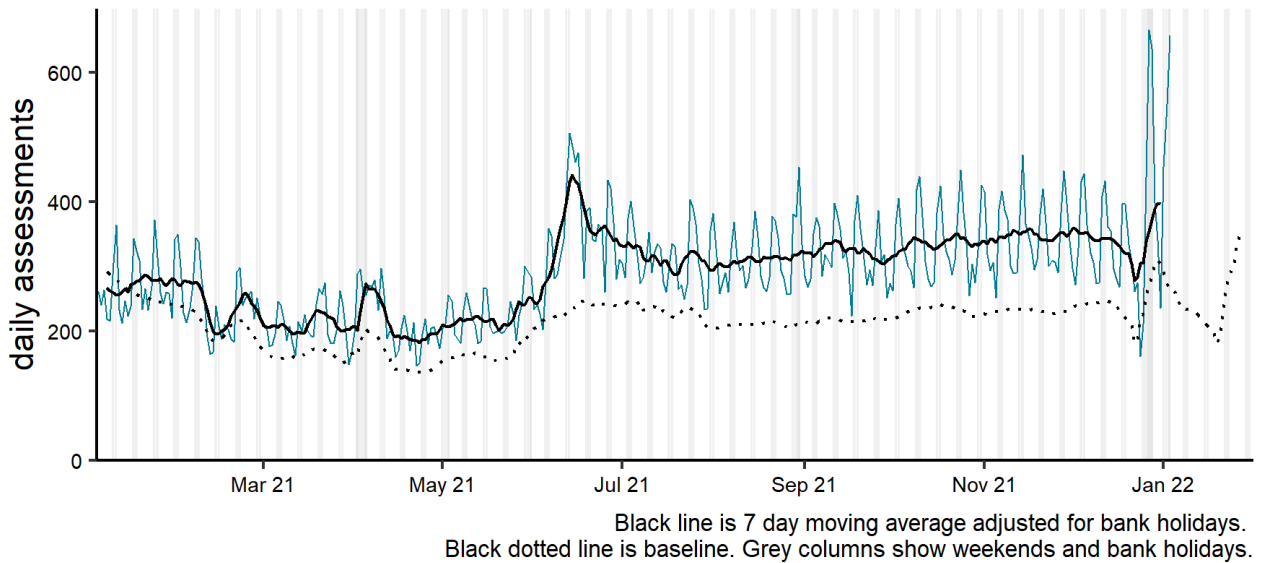
Black line is 7 day moving average adjusted for bank holidays.

Black dotted line is baseline.

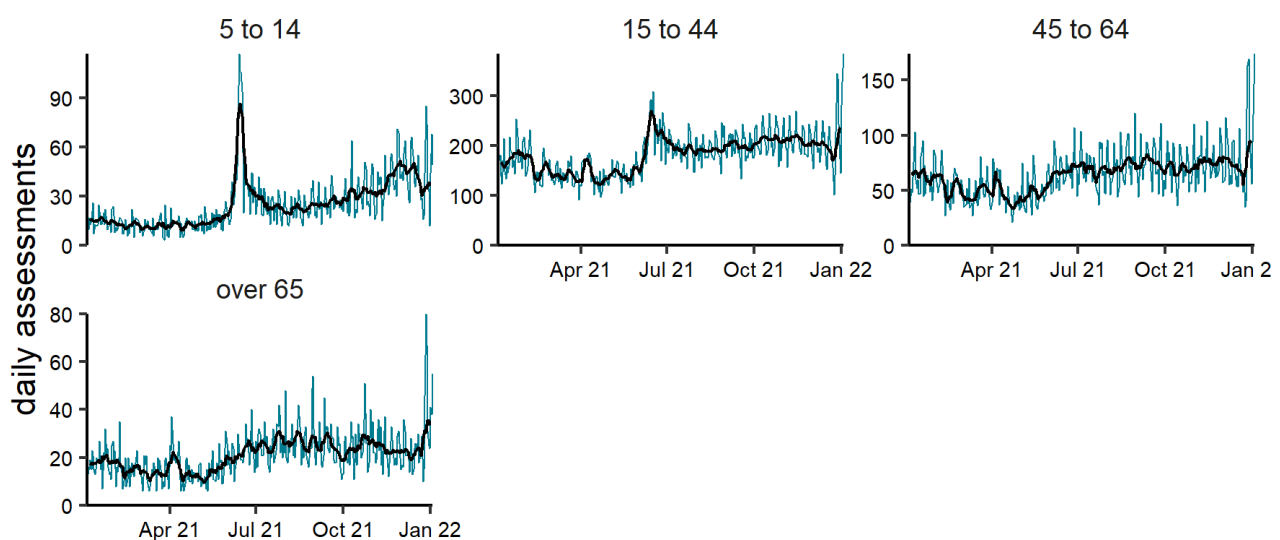
Eye problems NHS 111 online

Figure 22: Daily number of completed NHS 111 online assessments (and 7-day moving average adjusted for bank holidays) for eye problems, England (a) nationally, (b) by age and (c) by UKHSA Region.

(a) Eye problems 04/01/2021 - 03/01/2022



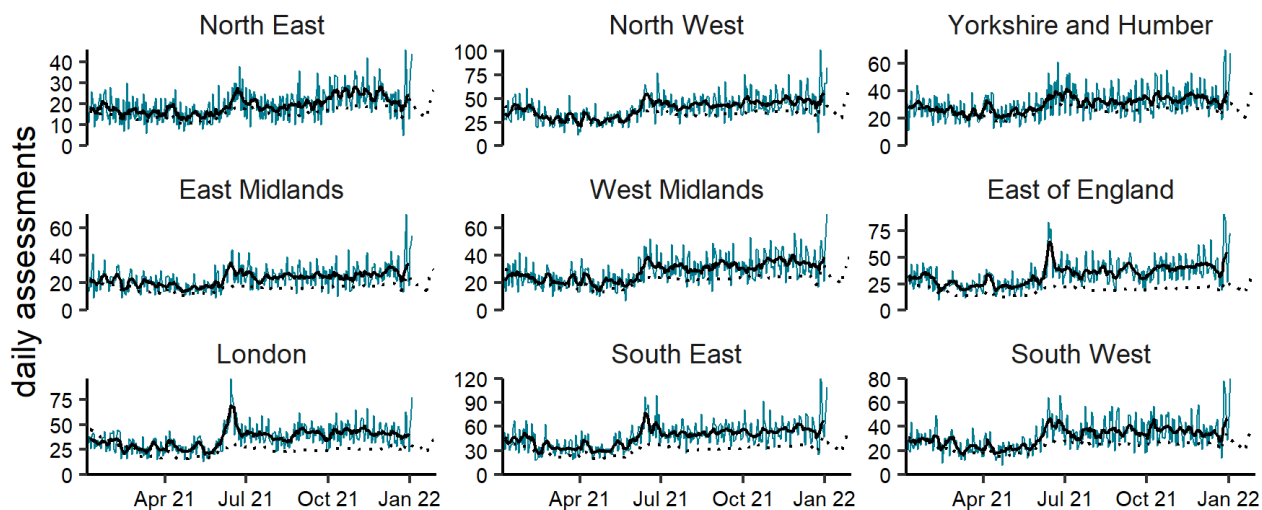
(b) Eye problems by age group (years) 04/01/2021 - 03/01/2022



NOTE: SCALES MAY VARY IN EACH GRAPH TO ENABLE TREND COMPARISON.
Black line is 7 day moving average adjusted for bank holidays.

(c)

Eye problems by region 04/01/2021 - 03/01/2022



NOTE: SCALES MAY VARY IN EACH GRAPH TO ENABLE TREND COMPARISON.
Black line is 7 day moving average adjusted for bank holidays.
Black dotted line is baseline.

Notes and caveats

The following additional caveats apply to the UKHSA remote health advice syndromic surveillance system:

- all NHS 111 syndromic trends should be interpreted with caution due to changes in national advice and guidance regarding access to health care services as well as updates and changes to service provision during the COVID-19 pandemic
- data presented should be used to monitor trends rather than numbers of ‘cases’:
 - NHS 111 calls data may not include the most urgent calls which are rapidly redirected to ambulance services
 - any user that launches an online assessment may access the service multiple times and can change their answers and follow multiple journeys through the online system: only complete assessments are included here
 - an individual may use both the NHS 111 online and NHS 111 telephony services; counts from the two services cannot be considered as distinct counts of individuals
 - NHS 111 online assessment data does not include children under 5 years of age
- baselines:
 - were last remodelled May 2021
 - are constructed from historical data since January 2018
 - represent seasonally expected levels of activity
 - take account of any known substantial changes in data collection, population coverage or reporting practices
 - the COVID-19 pandemic period is excluded, to show seasonally expected levels if COVID-19 had not occurred
 - may be remodelled to include the impacts seen during periods of the COVID-19 pandemic if/when appropriate due to introduction of large scale public health interventions which affect NHS 111 usage
- as NHS 111 systems evolve to meet service needs, we continue to work with NHS 111 and NHS England to ensure that:
 - changes impacting on syndromic indicators reported in this bulletin are identified and accounted for as far as possible
 - changes are described in: **Data quality issues of note this week**
- further information about NHS 111 can be found [here](#)

COVID-19 syndromic surveillance

The ‘potential COVID-19’ syndromic indicator reported here for all NHS 111 data is based on the outcome of each call or online assessment (known as the disposition), not the symptom (Pathway) selected:

- potential COVID-19 is the only syndromic indicator which is based on disposition

- potential COVID-19 calls and online assessments may therefore also appear in other syndromic indicators based on the Pathway of each call or online assessment
- these data are based on potential COVID-19 symptoms reported and are not based on outcomes of tests for coronavirus

Acknowledgements

We are grateful to NHS 111 and to NHS Digital for their assistance and support in providing the anonymised data that underpin this system.

About the UK Health Security Agency

The UK Health Security Agency is an executive agency, sponsored by the [Department of Health and Social Care](#).

www.ukhsa.gov.uk

© Crown copyright 2022
Version: RHA-1

Prepared by: Real-time Syndromic Surveillance Team
For queries relating to this document, please contact: syndromic.surveillance@phe.gov.uk

Published: January 2022



You may re-use this information (excluding logos) free of charge in any format or medium, under the terms of the Open Government Licence v3.0. To view this licence, visit [OGL](#). Where we have identified any third party copyright information you will need to obtain permission from the copyright holders concerned.



UKHSA supports the UN
Sustainable Development Goals

