



Omicron daily overview: 30 December 2021

Summary

UK total case numbers

	Confirmed Omicron cases	Change from previous report	SGTF cases*	Change from previous report
England	198,348	+16,801	451,194	+50,560
Northern Ireland	12,540	+574	N/A	N/A
Scotland	10,679	+1,439	89,396	+9,654
Wales	8,099	+730	8,391	+2,053
Cumulative total	229,666	+19,544	548,981	+62,267

Data up to 6pm 29 December 2021 for England

Data up to 4pm 29 December 2021 for Northern Ireland

Data up to 5pm 29 December 2021 for Scotland.

Data up to 5pm 29 December 2021 for Wales

Notes to table

* SGTF cases in the above table excludes persons ruled out as other variants

Hospitalisations and deaths

	Hospitalisations (Confirmed and SGTF*)	Change from previous report	Deaths	Change from previous report
England	815	+49	54	+1

Data provided 29 December 2021 for dates up to 28 December 2021

Notes to table

*SGTF cases in the above table exclude cases confirmed with other variants

Data set and definitions as described in Appendix 2. The data is lagged and requires hospital staff to submit emergency care data sets to NHS Digital for analysis and linkage with testing data

Proportion of hospitalised cases with confirmed or probable (SGTF+) Omicron who are unvaccinated, by Region

Region	% Confirmed Omicron unvaccinated hospitalised	% SGTF* unvaccinated hospitalised	% Total unvaccinated Omicron hospitalised
East Midlands	26.8%	0.0%	21.7%
East of England	17.1%	16.7%	17.0%
London	40.6%	33.3%	39.6%
North East	4.5%	16.7%	7.1%
North West	22.0%	18.4%	21.2%
South East	18.4%	27.3%	19.5%
South West	14.5%	0.0%	13.3%
West Midlands	23.8%	0.0%	17.2%
Yorkshire and Humber	38.1%	13.6%	25.6%
England	28%	18%	26%

(n=795) 20 cases excluded due to unknown vaccination status.

Data provided 29 December 2021 for dates up to 28 December 2021

Notes to table

*SGTF cases in the above table exclude cases confirmed with other variants

Data set and definitions as described in Appendix 2. The data is lagged and requires hospital staff to submit emergency care data sets to NHS Digital for analysis and linkage with testing data

The % total unvaccinated Omicron hospitalised cases is calculated against the total combined number of confirmed and SGTF cases with known vaccination status that have been hospitalised.

From the above table, 39.6% of hospitalised cases in London were unvaccinated. London is currently the largest and most robust data set of the regions and reflects the importance of vaccine uptake.

Breakdown of England daily cases by region

Region	Confirmed Omicron cases	Change from previous report	SGTF cases*	Change from previous report
East Midlands	15,504	+624	38,517	+6,493
East of England	12,674	+1,090	47,553	+4,686
London	48,320	+3,075	104,543	+25,313
North East	8,421	+784	16,041	+2,908
North West	24,082	+4,203	94,496	+16,993
South East	44,759	+3,210	41,950	+4,014
South West	20,772	+1,549	15,799	+1,549
West Midlands	12,379	+844	39,149	+4,841
Yorkshire and Humber	10,822	+1,385	52,715	+11,330
Unknown	615	+37	431	-27,567^
Total	198,348	+16,801	451,194	+50,560

Data up to 6pm 29 December 2021

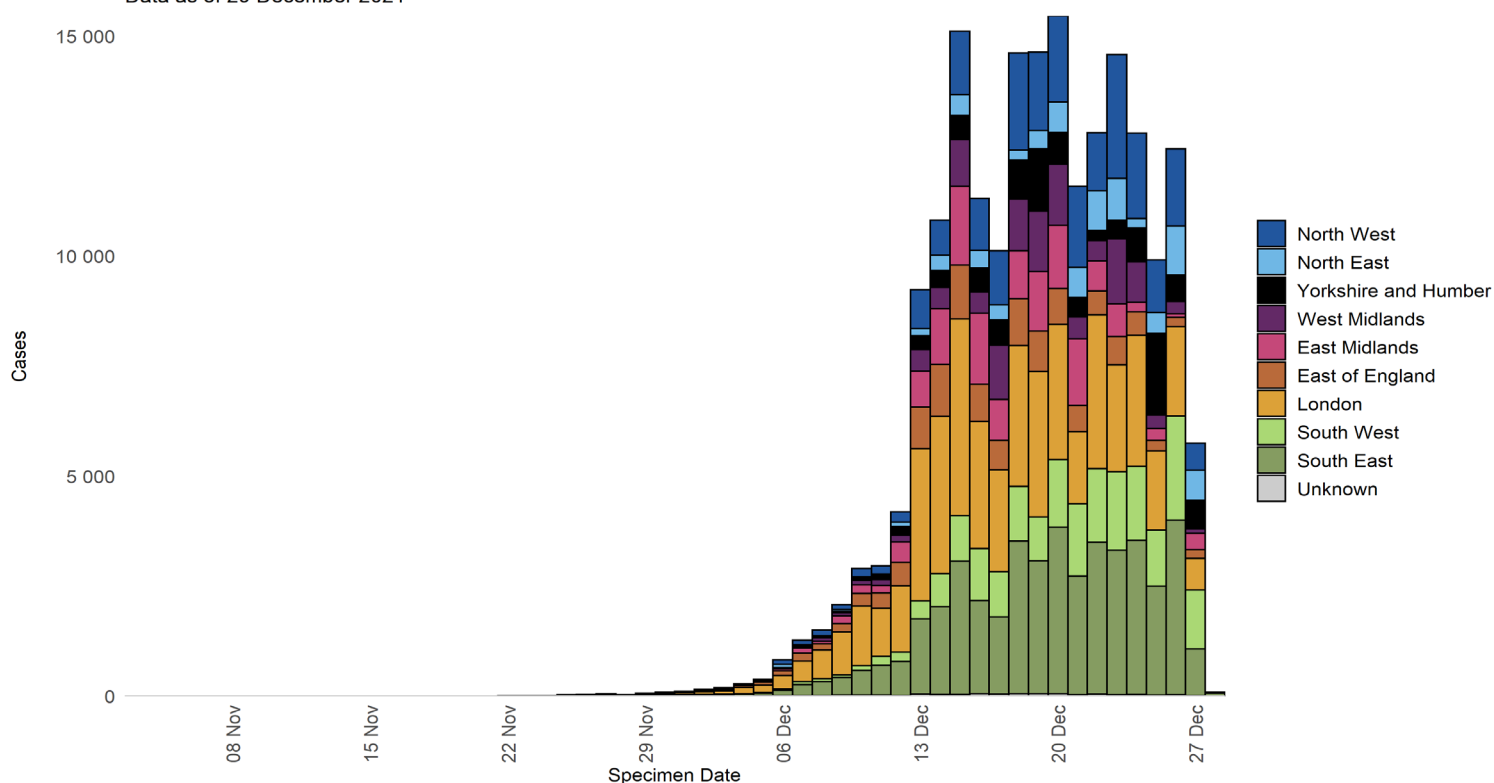
Notes to table

*SGTF cases in the above table exclude cases confirmed with other variants

^Negative changes since previous report can occur due to updated information

Epidemiology curve of confirmed Omicron cases by region

Data as of 29 December 2021



Samples with S-gene target failure (SGTF)

Number and proportion of SARS-CoV-2 cases with SGTF by region, among those with specimen dates on 27 and 28 December 2021.

Region	Total COVID Cases with known S-gene status**	SGTF cases	SGTF %
East Midlands	6,960	6,512	93.6
East of England	4,968	4,665	93.9
London	6,800	6,517	95.8
North East	4,197	3,793	90.4
North West	13,285	12,590	94.8
South East	4,148	3,871	93.3
South West	1,871	1,742	93.1
West Midlands	3,166	2,978	94.1
Yorkshire and Humber	9,001	8,414	93.5
England	54,479	51,163	93.9

SGSS data as of 6pm 29 December 2021.

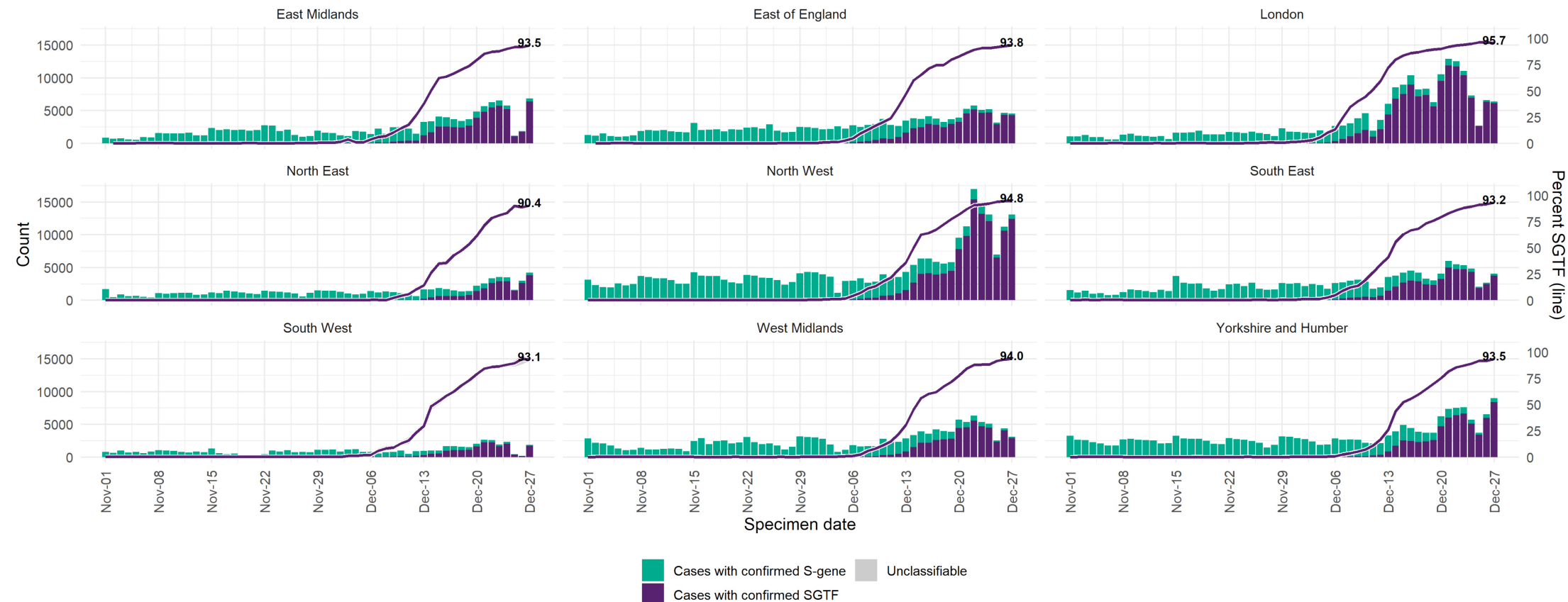
Notes to tables

** Known S-gene status based on those tested by TaqPath laboratories (Alderley Park, Milton Keynes, Glasgow, and Newcastle Lighthouse Laboratories).

Figure 1. COVID-19 cases with detectable S-gene/SGTF and percentage with SGTF among those tested in TaqPath Labs by day, by region

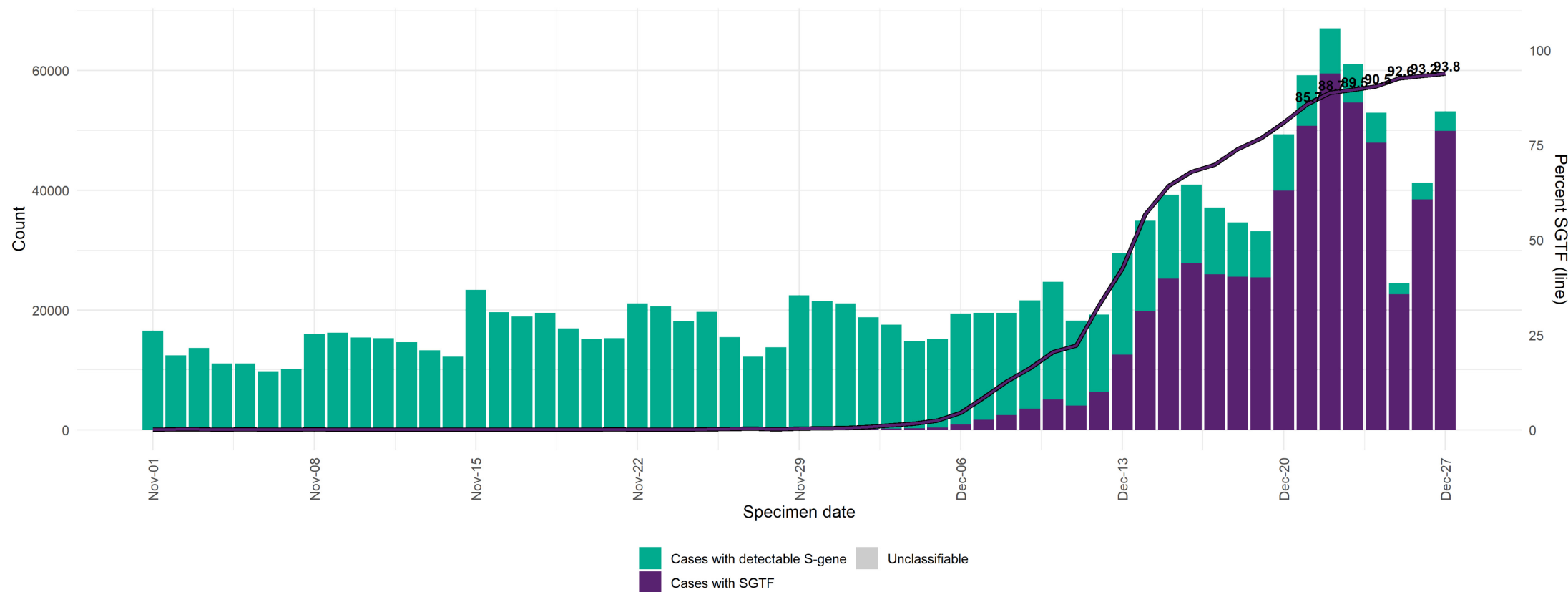
(95% confidence intervals indicated by grey shading).

Data updated 6pm 29 December 2021.



A detectable S gene is a proxy for Delta since April 2021. SGTF was a surveillance proxy for VOC-20DEC-01 however has largely consisted of Delta since August 2021. Local trends in these data may be affected by decisions to direct the processing of samples via a TaqPath laboratory. Only tests carried out with the TaqPath PCR assay and with confirmed SGTF or S gene results included, from Newcastle, Alderley Park, Milton Keynes and Glasgow Lighthouse Labs. SGTF refers to non-detectable S gene and ≤ 30 CT values for N and ORF1ab genes. Detectable S-gene refers to ≤ 30 CT values for S, N, and ORF1ab genes. Produced by Outbreak Surveillance Team, UKHSA.

Figure 2. Number of COVID-19 cases with S-gene positive/SGTF by day, among those tested in TaqPath labs
(95% confidence intervals indicated by grey shading).
Data updated 6pm 29 December 2021.



A detectable S gene is a proxy for Delta since April 2021. SGTF was a surveillance proxy for VOC-20DEC-01 however has largely consisted of Delta since August 2021. Local trends in these data may be affected by decisions to direct the processing of samples via a TaqPath laboratory. Only tests carried out with the TaqPath PCR assay and with confirmed SGTF or S gene results included, from Newcastle, Alderley Park, Milton Keynes and Glasgow Lighthouse Labs. SGTF refers to non-detectable S gene and ≤ 30 CT values for N and ORF1ab genes. Detectable S-gene refers to ≤ 30 CT values for S, N, and ORF1ab genes. Produced by Outbreak Surveillance Team, UKHSA.

Appendix 1

Counts are based on case definitions agreed on 13 December 2021
(Implemented on data 6pm 14 December 2021):

- **confirmed case:** Omicron (B.1.1.529) by sequencing or genotyping (i) 417N and 681R failure; ii) 69-70 deletion plus 417N; iii) 69-70 deletion plus 501Y; iv) Q493R, vi) other relevant genotyping results)
- **probable case:** COVID-19 PCR positive and i) SGTF^^ or ii) 69-70 deletion with specimen dates from 1 December**
- **possible case:** COVID-19 PCR positive and SGTF^^ with specimen dates from November 1 up to and including November 30*

^^S-gene target failure (SGTF): A positive SARS-CoV-2 PCR test carried out on the TaqPath assay with undetectable S-gene and CT values ≤ 30 for both N and Orf1ab gene targets. Currently reported into SGSS by Milton Keynes, Alderley Park, Glasgow, and Newcastle lighthouse laboratories.

*Excludes those confirmed as non-Omicron variant.

Appendix 2

Definitions of hospitalisation

Cases with presentation to a type 1 A&E and are admitted or transferred at the end of their emergency care stay, who have a positive SARS-CoV-2 test either:

- within 14 days prior to admission
- within 1 day post admission

Data source: NHS England provide this data from the NHS Digital Emergency Care Data Set (ECDS). This data is subject to delays.