



# Omicron daily overview: 29 December 2021

## Summary

### UK total case numbers

	Confirmed Omicron cases	Change from previous report	SGTF cases*	Change from previous report
England	181,547	+22,343	400,634	+44,920
Northern Ireland	11,966	+1,508	N/A	N/A
Scotland	9,240	+3,088^	79,742	+46,073^
Wales	7,369	+5,984	6,338	+3,785
<b>Cumulative total</b>	210,122	+32,923	486,714	+94,778

Data up to 6pm 28 December 2021 for England

Data up to 4pm 28 December 2021 for Northern Ireland

Data up to 5pm 28 December 2021 for Scotland.

Data up to 5pm 28 December 2021 for Wales

### Notes to table

\* SGTF cases in the above table excludes persons ruled out as other variants

^Scotland is no longer separating VOC Omicron cases in daily reporting and will update weekly.

Wales totals increase covers a period 25-28 December due to Christmas and Bank Holiday working arrangements

Northern Ireland figures are provisional and may be subject to change.

## Hospitalisations and deaths

	Hospitalisations (Confirmed and SGTF*)	Change from previous report	Deaths	Change from previous report
England	766	+98	53	+4

Data provided 28 December 2021 for dates up to 27 December 2021

### Notes to table

\*SGTF cases in the above table exclude cases confirmed with other variants

Data set and definitions as described in Appendix 2. The data is lagged and requires hospital staff to submit emergency care data sets to NHS Digital for analysis and linkage with testing data

## Proportion of hospitalised cases with confirmed or probable (SGTF+) Omicron who are unvaccinated, by Region

Region	% Confirmed Omicron unvaccinated hospitalised	% SGTF* unvaccinated hospitalised	% Total unvaccinated Omicron hospitalised
East Midlands	27.3%	0.0%	23.4%
East of England	17.5%	20.0%	17.8%
London	41.2%	33.3%	40.3%
North East	4.5%	20.0%	7.4%
North West	22.1%	19.4%	21.6%
South East	19.7%	22.2%	20.0%
South West	13.7%	0.0%	12.5%
West Midlands	23.8%	0.0%	17.9%
Yorkshire and Humber	44.4%	15.4%	32.3%
England	<b>28%</b>	<b>18%</b>	<b>26%</b>

(n=751) 15 cases excluded due to unknown vaccination status.

Data provided 28 December 2021 for dates up to 27 December 2021

### Notes to table

\*SGTF cases in the above table exclude cases confirmed with other variants

Data set and definitions as described in Appendix 2. The data is lagged and requires hospital staff to submit emergency care data sets to NHS Digital for analysis and linkage with testing data

The % total unvaccinated Omicron hospitalised cases is calculated against the total combined number of confirmed and SGTF cases with known vaccination status that have been hospitalised.

From the above table, 40.3% of hospitalised cases in London were unvaccinated. London is currently the largest and most robust data set of the regions and reflects the importance of vaccine uptake.

### Breakdown of England daily cases by region

Region	Confirmed Omicron cases	Change from previous report	SGTF cases*	Change from previous report
East Midlands	14,880	+781	32,024	+2,010
East of England	11,584	+2,097	42,867	+5,443
London	45,245	+5,708	79,230	+5,750
North East	7,637	+1,383	13,133	+2,035
North West	19,879	+1,350	77,503	+13,622
South East	41,549	+5,439	37,936	+2,733
South West	19,223	+3,509	14,250	+173
West Midlands	11,535	+816	34,308	+5,714
Yorkshire and Humber	9,437	+1,156	41,385	+4,684
Unknown	578	+104	27,998	+2,756
<b>Total</b>	<b>181,547</b>	<b>+22,343</b>	<b>400,634</b>	<b>+44,920</b>

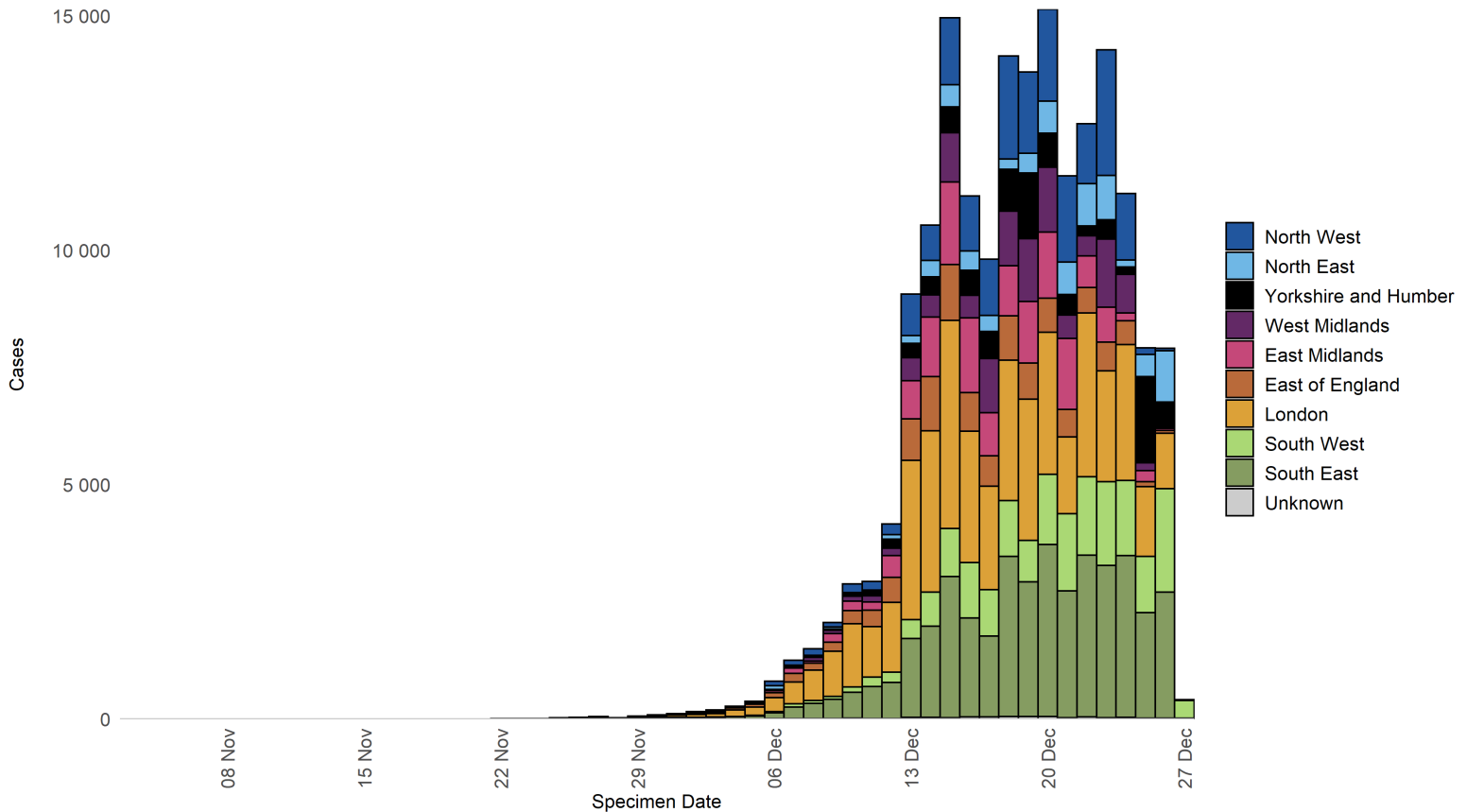
**Data up to 6pm 28 December 2021**

### Notes to table

\*SGTF cases in the above table exclude cases confirmed with other variants

## Epidemiology curve of confirmed Omicron cases by region

Data as of 28 December 2021



### Samples with S-gene target failure (SGTF)

Number and proportion of SARS-CoV-2 cases with SGTF by region, among those with specimen dates on 26 and 27 December 2021.

Region	Total COVID Cases with known S-gene status**	SGTF cases	SGTF %
East Midlands	1,701	1,565	92.0
East of England	4,117	3,806	92.4
London	4,919	4,722	96.0
North East	3,153	2,803	88.9
North West	9,788	9,240	94.4
South East	1,811	1,663	91.8
South West	121	115	95.0
West Midlands	3,840	3,553	92.5
Yorkshire and Humber	5,966	5,476	91.8
England	35,484	33,009	93.0

SGSS data as of 6pm 28 December 2021.

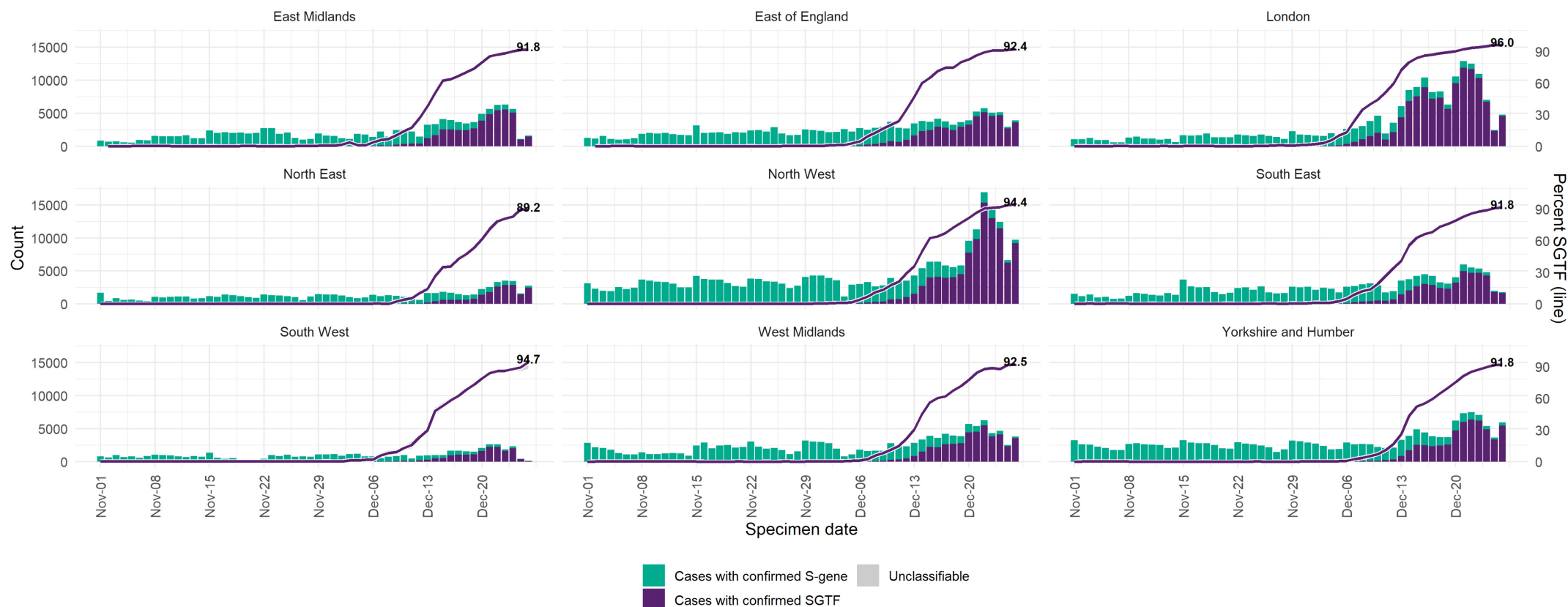
#### Notes to tables

\*\* Known S-gene status based on those tested by TaqPath laboratories (Alderley Park, Milton Keynes, Glasgow, and Newcastle Lighthouse Laboratories).

**Figure 1. COVID-19 cases with detectable S-gene/SGTF and percentage with SGTF among those tested in TaqPath Labs by day, by region**

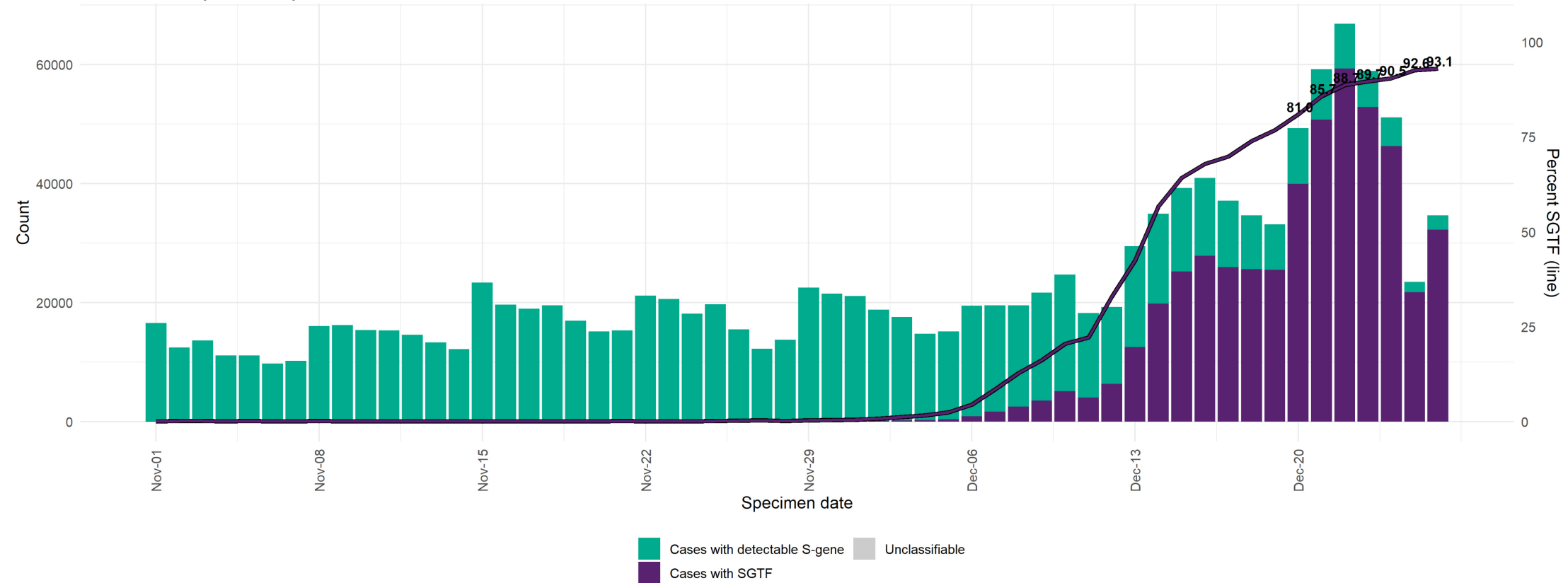
(95% confidence intervals indicated by grey shading).

Data updated 6pm 28 December 2021.



A detectable S gene is a proxy for Delta since April 2021. SGTF was a surveillance proxy for VOC-20DEC-01 however has largely consisted of Delta since August 2021. Local trends in these data may be affected by decisions to direct the processing of samples via a TaqPath laboratory. Only tests carried out with the TaqPath PCR assay and with confirmed SGTF or S gene results included, from Newcastle, Alderley Park, Milton Keynes and Glasgow Lighthouse Labs. SGTF refers to non-detectable S gene and  $\leq 30$  CT values for N and ORF1ab genes. Detectable S-gene refers to  $\leq 30$  CT values for S, N, and ORF1ab genes. Produced by Outbreak Surveillance Team, UKHSA.

**Figure 2. Number of COVID-19 cases with S-gene positive/SGTF by day, among those tested in TaqPath labs**  
 (95% confidence intervals indicated by grey shading).  
 Data updated 6pm 28 December 2021.



A detectable S gene is a proxy for Delta since April 2021. SGTF was a surveillance proxy for VOC-20DEC-01 however has largely consisted of Delta since August 2021. Local trends in these data may be affected by decisions to direct the processing of samples via a TaqPath laboratory. Only tests carried out with the TaqPath PCR assay and with confirmed SGTF or S gene results included, from Newcastle, Alderley Park, Milton Keynes and Glasgow Lighthouse Labs. SGTF refers to non-detectable S gene and  $\leq 30$  CT values for N and ORF1ab genes. Detectable S-gene refers to  $\leq 30$  CT values for S, N, and ORF1ab genes. Produced by Outbreak Surveillance Team, UKHSA.

## Appendix 1

Counts are based on case definitions agreed on 13 December 2021  
(Implemented on data 6pm 14 December 2021):

- **confirmed case:** Omicron (B.1.1.529) by sequencing or genotyping (i) 417N and 681R failure; ii) 69-70 deletion plus 417N; iii) 69-70 deletion plus 501Y; iv) Q493R, vi) other relevant genotyping results)
- **probable case:** COVID-19 PCR positive and i) SGTF^^ or ii) 69-70 deletion with specimen dates from 1 December\*\*
- **possible case:** COVID-19 PCR positive and SGTF^^ with specimen dates from November 1 up to and including November 30\*

^^S-gene target failure (SGTF): A positive SARS-CoV-2 PCR test carried out on the TaqPath assay with undetectable S-gene and CT values  $\leq 30$  for both N and Orf1ab gene targets. Currently reported into SGSS by Milton Keynes, Alderley Park, Glasgow, and Newcastle lighthouse laboratories.

\*Excludes those confirmed as non-Omicron variant.

## Appendix 2

### Definitions of hospitalisation

Cases with presentation to a type 1 A&E and are admitted or transferred at the end of their emergency care stay, who have a positive SARS-CoV-2 test either:

- within 14 days prior to admission
- within 1 day post admission

Data source: NHS England provides this data from the NHS Digital Emergency Care Data Set (ECDS). This data is subject to delays.