



# Ministry of Defence

## Army Equipment Support Publication **SHELTER, GENERAL PURPOSE 7.3 M x 5.5 M (24 FT x 18 FT) MK 4 Complete Equipment Schedule (CES)**

8340-C-114-711

4th Edition April 2021  
Superseding 3rd Edition September 2018

Sponsored for use in the  
United Kingdom Ministry of Defence  
and Armed Forces by Defence Equipment & Support  
Operational Infrastructure (OI)

This information is released by the UK Government for Defence purposes only. This information must be afforded the same degree of protection as that afforded to information of an equivalent classification originated by the recipient Government or as required by the recipient Government's National Security regulations. This information may be disclosed only within the Defence Department of the recipient Government, except as otherwise authorised by the Ministry of Defence (Army). This information may be subject to privately owned rights.

**Publication Authority: DES LE OI-Infra-Mgr1**



Service users should send their comments through the channel prescribed for the purpose by the publication sponsor.

THIS DOCUMENT IS THE PROPERTY OF HER BRITANNIC MAJESTY'S GOVERNMENT and is issued for the information of such persons only as need to know its contents in the course of their official duties. Any person finding this document should hand it in to a British forces unit or to a police station for its safe return to the Ministry of Defence, (DDef Sy), Main Building, Whitehall London, SW1A 2HB, with particulars of how and where found. THE UNAUTHORISED RETENTION OR DESTRUCTION OF THIS DOCUMENT IS AN OFFENCE UNDER THE OFFICIAL SECRETS ACTS OF 1911-1989. (When released to persons outside Government service, this document is issued on a personal basis. The recipient to whom it is entrusted in confidence, within the provisions of the Official Secrets Acts 1911-1989, is personally responsible for its safe custody and for seeing that its contents are disclosed only to authorised persons.)

© CROWN COPYRIGHT RESERVED

AMENDMENT RECORD

Amdt No	Incorporated By (Signature)	Date
1		
2		
3		
4		
5		
6		
7		
8		
9		
10		
11		
12		
13		
14		
15		
16		
17		
18		
19		
20		
21		
22		
23		
24		
25		
26		
27		
28		
29		
30		
31		

Amdt No	Incorporated By (Signature)	Date
32		
33		
34		
35		
36		
37		
38		
39		
40		
41		
42		
43		
44		
45		
46		
47		
48		
49		
50		
51		
52		
53		
54		
55		
56		
57		
58		
59		
60		
61		
62		

**PAGE LEFT INTENTIONALLY BLANK**

**CONTENTS**

**PRELIMINARY MATERIAL**

**Page**

AMENDMENT RECORD	iii
CONTENTS	v
PREFACE	vi
INTRODUCTION	vi
Instructions for use by Units	vi
Initial issues by Royal Logistic Corps	vi
In lieu items	vii
General Notes	vii
Amendment	vii
Indentations	vii
Description	vii
RELATED AND ASSOCIATED PUBLICATIONS	viii
Related publications	viii
Associated publications	ix
ABBREVIATIONS	ix
WARNINGS AND CAUTIONS	x

**COMPLETE EQUIPMENT SCHEDULE (CES)**

- (1)
- (2) 1 General Information
- (3) 2 CES
- (4) 2-1 Main Items 8340-99-891-0224
- (5) 2-2 Main Items 8340-99-421-2154
- (6) 2.3 Flooring
- (6) 2-4 Repair Kit
- (7) 3 Indexes
- (8) 3-1 Index of NSN to Chapter and Page

**PREFACE**

Sponsor: Operational Infrastructure (OI)  
Project Number: TBA  
File Ref: 8340-C-114-741  
Publication Authority: DES LE OI-Infra-Mgr1

**INTRODUCTION**

1. Any comments by service users on this publication should be forwarded through the channels prescribed in JSP (D) 543. The AESP Form 10 is now in an electronic format and must be used for forwarding comments on this AESP.
2. AESPs are issued under UK MOD authority and where AESPs specify action is to be taken, the AESP will of itself be sufficient authority for such action and also for the demanding of the necessary stores, subject to the provisions of Para 3 below.
3. The subject matter of this publication may be affected by Defence Instructions and Notices (DIN), Standard Operating Procedures (SOP) or by local regulations. When any such instruction, order or regulation contradicts any portion of this publication it is to be taken as the overriding authority.
4. The subject matter of this publication details information specific to Shelter, General Purpose 7.3M x 5.5M (24 ft x 18 ft) MK 4.
5. This Complete Equipment Schedule (CES) is designed as an aid to the identification of components, parts or assemblies of parts of the equipment and to provide information necessary for demanding spares.
6. This CES may list some or all of the parts comprising the equipment concerned, but only those parts assigned a NATO Stock Number, Service Catalogue or Reference Number will normally be available as spares. Should there be a requirement for an item not assigned a number, demands may be submitted quoting the AESP, Item Number, Figure Reference and Item Name. Where a manufacturers reference is known, this should also be quoted.

**Instructions for use by Units**

7. Detailed instructions for use by Units are given in JSP866 Volume 4, Part 200, Supply of Material.

**Initial issues by Royal Logistic Corps**

8. Initial issues as detailed below:
  - 8.1. One copy of the CES will be attached to the Unit's copy of the issue voucher and one further copy to accompany every equipment.
  - 8.2. Deficiencies (if any) will be annotated on the covering issue voucher by reference to the serial number of the items list in the simple CES.
  - 8.3. 'To follow' vouchers will not be created.
  - 8.4. All items listed in the CES can be issued separately. If any listed herein becomes unserviceable it should be extracted and exchanged and the equipment retained pending receipt. Transfers between equipment holders should normally be complete to CES.

**In lieu items**

9. Authorised 'in lieu' items held against this CES will not be replaced, until they are no longer serviceable. When replacement becomes necessary the correct item, as listed in the CES, will be demanded.

**General Notes**

10. Certain items may be annotated as follows:

10.1. (E) - Expendable stores, consumable stores and material, 'NON- LEDGER' spare parts of minor value.

10.2. (X) - ESSENTIAL ITEMS without which the RLC will not issue the equipment.

10.3. (\*) - Indicates the accountability classification of the item.

10.4. (NI) - (Not illustrated) when appearing with a number in the 'Fig Item' column indicates that the item is not illustrated.

10.5. (NIV) - (Not in Vocabulary) indicates that the item is not available within the Stores System.

**Amendment**

11. Amendments to the catalogue will be published when necessary. These will be numbered consecutively, and the amendment record sheet completed for each amendment list embodied. New or amended material will be highlighted by side lining to show the extent of the amendment.

**Indentations**

12. Items are listed in a logical assembly/disassembly order and are indented by the 'Dot System' in which each 'dot' depicts the relationship of the item to the main assembly.

MAIN ASSEMBLY

Attaching parts for main assembly.

. FIRST LEVEL OF BREAKDOWN (Sub-assembly or part of main assembly)

. Attaching parts for first level.

. . SECOND LEVEL OF BREAKDOWN (Sub-sub-assembly or detail part of Sub-assembly)

. . Attaching parts for second level.

**Description**

13. The item Description and Annotation Block is also to convey additional information to the CES user, which will appear in brackets i.e. related location detail, e.g. another AESP or Chapter/Item within this AESP.

**RELATED AND ASSOCIATED PUBLICATIONS****Related publications**

14. The Octad for the subject equipment consists of the publications shown below. All references are prefixed with the first eight digits of this publication. The availability of the publications can be checked by reference to the relevant Group Index (see AESP 0100-A-001-013).

Category/Sub-Category		Information Level				
		1 User/Operator	2 Unit Maintenance	3 Field Maintenance	4 Base Maintenance	
1	0	Purpose and Planning Information	101	101	101	101
	1	Equipment Support Policy Directives	*	*	*	*
	2	Cancellation Notice	*	*	*	*
2	0	Operating Information	*	*	*	*
	1	Aide Memoire	201	*	*	*
	2	Training Aids	*	*	*	*
3		Technical Description	*	*	*	*
4	1	Installation Instructions	*	*	*	*
	2	Preparation for Special Environments	*	*	*	*
5	1	Failure Diagnosis	*	*	*	*
	2	Repair Instructions	201	*	201	*
	3	Inspection Standards	201	*	*	*
	4	Calibration Procedures	*	*	*	*
6		Maintenance Schedules	201	201	201	*
7	1	Illustrated Parts Catalogues	711	711	711	711
	2	Commercial Parts Lists	*	*	*	*
	3	Complete Equipment Schedule, Production	*	*	*	*
	4	Complete Equipment Schedule, Service Edition (Simple Equipment)	741	741	741	741
	5	Complete Equipment Schedule, Service Edition (Complex Equipment)	*	*	*	*
8	1	Modification Instructions	*	*	*	*
	2	General Instructions, Special Technical Instructions and Servicing Instructions	*	*	*	*
	3	Service Engineered Modification Instructions (RAF only)	*	*	*	*

\* Category/Sub-category not published.

**Table 1: Related Publications**



**Associated publications**

15. There are no associated publications applicable to this equipment.

**ABBREVIATIONS**

16. The following abbreviations are used in this AESP:

<b>Abbreviation</b>	<b>Nomenclature</b>
AESP	Army Equipment Support Publication
AFG	Army Form General
CES	Complete Equipment Schedule
DE&S	Defence Equipment and Support
DIN	Defence Instruction Notices
Fig	Figure
ft	feet (foot)
ft <sup>3</sup>	feet cubed
in.	inch
IPC	Illustrated Parts Catalogue
kg	kilogram
lb	pound
m	metre
m <sup>2</sup>	metres squared
m <sup>3</sup>	metres cubed
mm	millimetres
NATO	North Atlantic Treaty Organisation
NI	Not Illustrated
NIV	Not in Vocabulary
NSCM	NATO Supply Code for Manufacturers
NSN	NATO Stock Number
OI	Operational Infrastructure
Para	Paragraph
PPE	Personal Protective Equipment
RLC	Royal Logistics Corp
SOP	Standard Operating Procedures
TSP	Training Support Plan

**WARNINGS AND CAUTIONS****HAZARDOUS SUBSTANCES**

17. Before using any hazardous substances or material, the user must be conversant with the safety precautions and first aid instructions:

17.1. On the label of the container it was supplied in.

17.2. On the material Safety Data Sheet.

17.3. In local Safety Orders and Regulations.

**WARNINGS**

- (1) **PERSONNEL INJURY/EQUIPMENT DAMAGE. SUFFICIENT PERSONNEL ARE REQUIRED WHEN LIFTING THE ASSEMBLED ROOF, THE MINIMUM IS ONE PERSON PER LEG.**
- (2) **PERSONNEL INJURY/CRUSH HAZARD. EXERCISE CAUTION WHEN ASSEMBLING POLES AND BRACKETS DUE TO THE RISK OF CRUSH INJURY TO FINGERS.**
- (3) **PERSONNEL INJURY. WHEN POLES ARE CURVED UNDER TENSION THERE IS A HIGH RISK THAT THEY MAY SLIP AND SPRING BACK TO THEIR STRAIGHT RELAXED POSITION. PERSONNEL SHOULD NOT POSITION THEMSELVES DIRECTLY IN FRONT OF THE POLES.**
- (4) **PERSONNEL INJURY/HEAVY WEIGHT. MINIMUM PERSONNEL NUMBERS REQUIRED TO LIFT OR MOVE THE SHELTER SHOULD BE OBSERVED.**
- (5) **PERSONNEL INJURY/BURN HAZARD. WHEN BURNING WEBBING TO PREVENT FRAYING, THE WEBBING WILL BECOME EXTREMELY HOT AND MELT.**
- (6) **PERSONNEL INJURY, WHEN FITTING OR RELEASING THE INSULATION TENSIONERS THERE IS A HIGH RISK THAT UNDER TENSION THEY MAY SLIP AND SPRING BACK AT PERSONNEL.**
- (7) **IT IS ESSENTIAL THAT THE BASE RESTRAINT STRAPS AND THE FRAME RESTRAINT STRAPS ARE FITTED TO THE FRAME BEFORE INSTALLING THE PVC COVERS. THIS ENSURES THAT THE FRAME IS RIDGID AND ENHANCES THE WIND RESISTANCE OF THE SHELTER AS WELL AS MAKING IT EASIER TO FIT THE COVERS.**
- (8) **WHEN REPAIRING PVC COVERS, THE TEXTILE NEEDS TO BE ABRAIDED. PVC DUST IS TOXIC AND SHOULD NOT BE INHALED. WEAR THE APPROPRIATE PPE.**
- (9) **WHEN REPAIRING PVC COVERS, A CONTACT ADHESIVE IS UTILISED. FOLLOW SAFETY DATA SHEET SUPPLIED WITH THE CONTACT ADHESIVE.**

## CAUTIONS

- (1) **EQUIPMENT DAMAGE.** The shelter is to be pitched on firm level ground and it is essential that adequate anchorage or ballast be placed on the coated fabric sod cloths at the bottom of the wall and ends of the shelter. The listed tent pins or spoil from drainage trenches is suitable for this purpose and may be used in sandbags or other flexible containers, if available. Guy lines are also provided to give additional stability under high wind conditions.
- (2) **EQUIPMENT DAMAGE.** Wet textile should never be folded or packed unless circumstances render this unavoidable. Shelters should therefore be left to dry thoroughly before they are struck. If the shelter is not completely dry the officer in charge of the campsite or receiving unit is to be informed.
- (3) **EQUIPMENT DAMAGE.** All insulation panels can be added after the shelter has been erected EXCEPT the roof panel that must be attached to the frame prior to the covers.
- (4) **EQUIPMENT DAMAGE.** When lifting the roof, the supervisor must ensure that the lift is even along the length of the frame, thus avoiding distortion of the brackets and poles.
- (5) **EQUIPMENT DAMAGE.** The sunshade when fitted is to be erected prior to the shelter if possible or alternatively moved into position over the tent after assembly with the base restraint straps being added after it is in its final position. The ratchet straps should not be over tightened and never used if damaged.
- (6) **EQUIPMENT DAMAGE.** The shelter is to be erected on firm level ground, which has been cleared of any large stones or rubble.
- (7) **EQUIPMENT DAMAGE.** A power washer may be used at low pressure with warm water. Use judgement and caution regarding water pressure and temperature.
- (8) **EQUIPMENT DAMAGE.** Do not use solvents or detergents to clean the shelter as they will dissolve the protective coating on the fabric.
- (9) **EQUIPMENT DAMAGE.** Rips and tears must be repaired immediately to maintain the insulation integrity.
- (10) **EQUIPMENT DAMAGE.** The PVC covers are different from the cotton canvas covers in that they do not stretch. Fitting the end gables requires the frame to be in the correct position to fit the PVC cover spigots over the frame extensions using the appropriate straps. Do not under any circumstances force the canvas into position or use frame parts to level the canvas into position.

**PAGE LEFT INTENTIONALLY BLANK**

CHAPTER 1  
GENERAL INFORMATION

CONTENTS

Chapter 1.....1  
General Information.....1  
Contents.....1  
Main CES List NSN 8340-99-891-0224.....3  
Main CES List NSN 8340-99-421-2154.....4  
Hard Flooring CES List NSN 8340-99-551-0054.....5

Fig	Page
Figure 1: Shelter, general purpose 7.3 m x 5.5 m (24 ft x 18 ft) Mk 4.....	1
Figure 2: NSN 8340-99-891-0224 Family Tree.....	2
Figure 3: NSN 8340-99-421-2154 Family Tree.....	2

Table	Page
Table 2: Main CES NSN 8340-99-891-0224.....	3
Table 3: Main CES NSN 8340-99-421-2154.....	4
Table 4: Hard Floor NSN 8340-99-551-0054.....	5



Figure 1: Shelter, general purpose 7.3 m x 5.5 m (24 ft x 18 ft) Mk 4

1. The equipment is designated:

SHELTER, GENERAL PURPOSE 7.3 M X 5.5 M (24 FT X 18 FT) MK 4  
NATO Stock no 8340-99-891-0224 for the basic shelter  
NATO Stock no 8340-99-421-2154 for the shelter including insulation

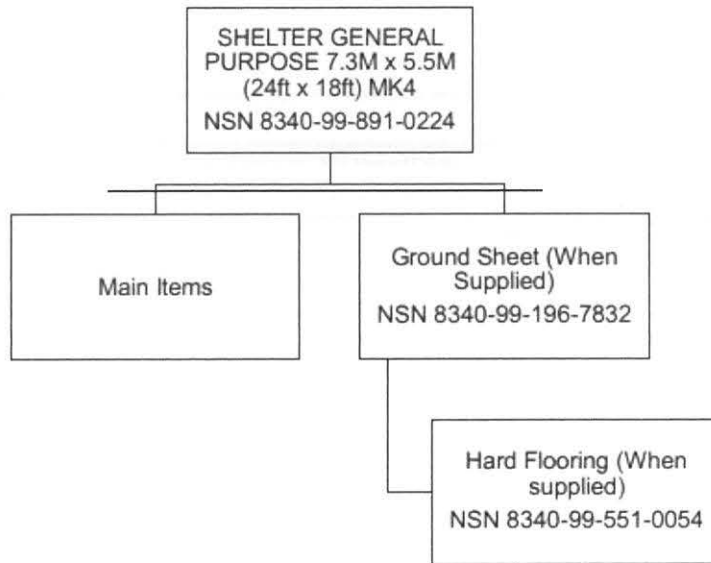


Figure 2: NSN 8340-99-891-0224 Family Tree

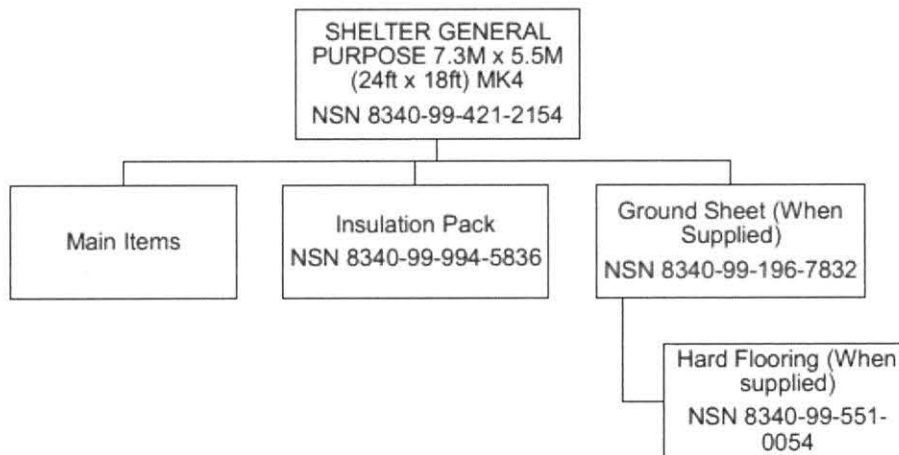


Figure 3: NSN 8340-99-421-2154 Family Tree

MAIN CES LIST NSN 8340-99-891-0224

Fig. No Item No	Army		Item Description and Annotations	No Off D of Q	Quantity on Issue
	DMC NSCM	NSN Part Number			
0	J11	8340-99-421-2154	SHELTER, GENERAL PURPOSE 7.3 M X 5.5 M (24 FT X 18 FT) MK 4	1	
1	J11	8340-99-421-2154	MAIN ITEMS (SEE CHAPTER 2-1)	N/A	

Table 2: Main CES NSN 8340-99-891-0224

## MAIN CES LIST NSN 8340-99-421-2154

Fig. No Item No	Army		Item Description and Annotations	No Off D of Q	Quantity on Issue
	DMC NSCM	NSN Part Number			
0	J11	8340-99-421-2154	SHELTER, GENERAL PURPOSE 7.3 M X 5.5 M (24 FT X 18 FT) MK 4	1	
1	J11	8340-99-421-2154	MAIN ITEMS (SEE CHAPTER 2-2)	N/A	
2	J11	8340-99-994-5836	INSULATION PACK (SEE CHAPTER 2-2)	N/A	

Table 3: Main CES NSN 8340-99-421-2154



HARD FLOORING CES LIST NSN 8340-99-551-0054

Fig. No Item No	Army		Item Description and Annotations	No Off D of Q	Quantity on Issue
	DMC NSCM	NSN Part Number			
(11) 1	J11	8340-99-551-0054	HARD FLOORING (m <sup>2</sup> )	47 m <sup>2</sup>	

Table 4: Hard Floor NSN 8340-99-551-0054

**PAGE LEFT INTENTIONALLY BLANK**

**CHAPTER 2**  
**COMPLETE EQUIPMENT SCHEDULE**

**CONTENTS**

Chapter

- 2-1 Main Items 8340-99-891-0224
- 2-2 Main Items 8340-99-421-2154
- 2.3 Flooring
- 2-4 Repair Kit

**PAGE LEFT INTENTIONALLY BLANK**

CHAPTER 2-1

COMPLETE EQUIPMENT SCHEDULE (CES)

MAIN ITEMS FOR NSN 8340-99-891-0224

CONTENTS

Chapter 2-1 .....	1
Complete Equipment Schedule (CES).....	1
Main Items For NSN 8340-99-891-0224 .....	1
Contents .....	1
Shelter Main Items For NSN 8340-99 891-0224.....	3
<b>Fig</b>	<b>Page</b>
Figure 4: Tent, Shelter, General Purpose 7.3 m x 5.5 m (24 ft x 18 ft) Mk4 .....	2
Figure 5: Tent, Shelter, General Purpose 7.3 m x 5.5 m (24 ft x 18 ft) Mk4 continued .....	4
<b>Table</b>	<b>Page</b>
Table 5: Shelter Main Items .....	3
Table 6: Shelter Main Items continued.....	5

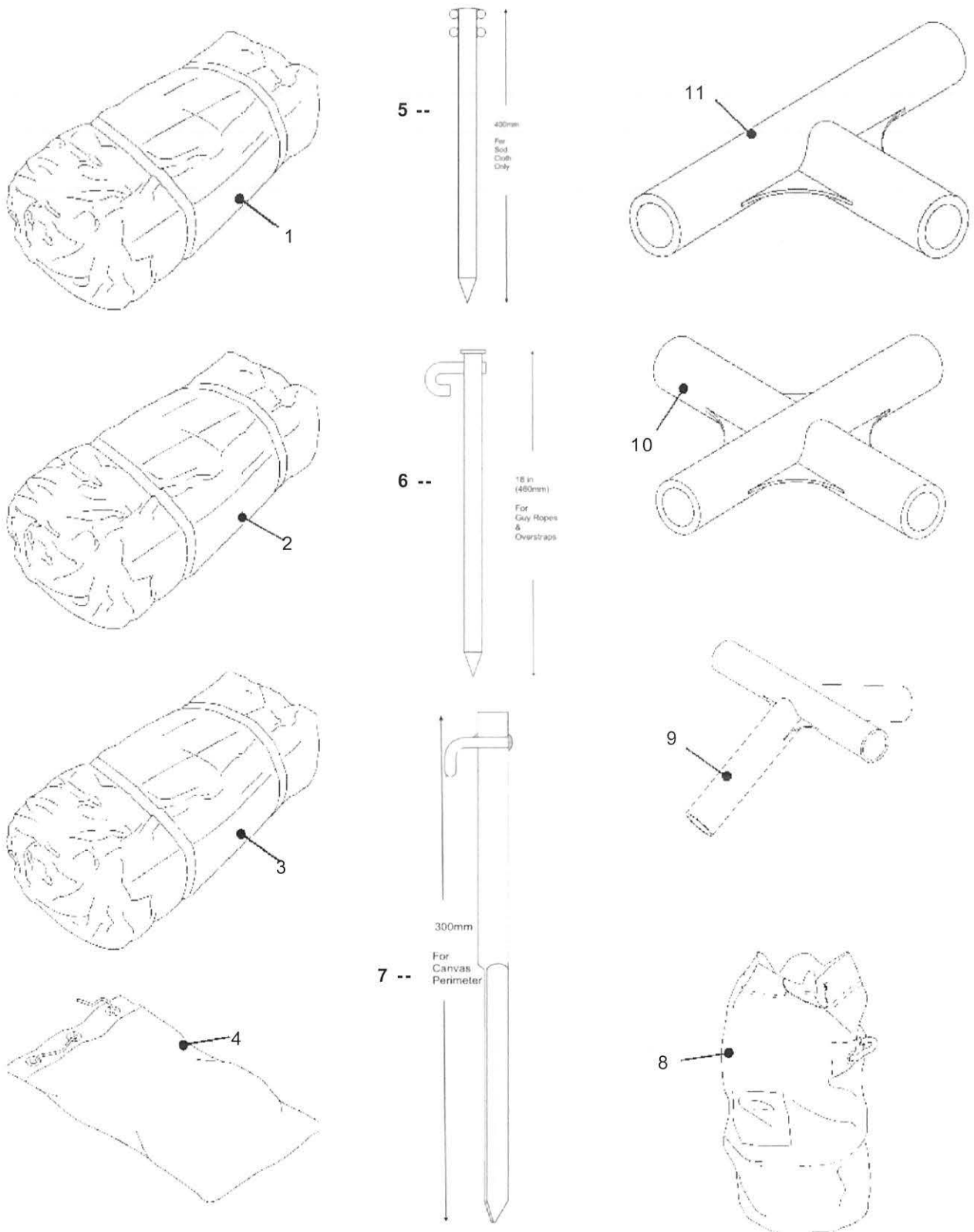


Figure 4: Tent, Shelter, General Purpose 7.3 m x 5.5 m (24 ft x 18 ft) Mk4

SHELTER MAIN ITEMS FOR NSN 8340-99 891-0224

Fig. No Item No	Army		Item Description and Annotations	No Off D of Q	Quantity on Issue
	DMC NSCM	NSN Part Number			
(4) 1	J11	8340-99-321-2752	VALISE, TENT	3 EA	
(4) 2A	J11	8340-99-155-6628	END SECTION MK 4	2 EA	
(4) 2B	J11	8340-99-177-3894	DUAL ATTACHMENT END SECTION (Alternative to 8340-99-155-6628 for porch or passageway)	0 EA	
(4) 3	J11	8340-99-860-0615	ROOF AND WALLS SECTION MK 4	2 EA	
(4) 4	J11	8340-99-120-7745	CONTAINER, TENT PIN	2 EA	
(4) 5	J11	8340-99-137-3895	PIN, TENT 400 MM STEEL	30 EA	
(4) 6	J11	8340-99-943-9052	PIN, TENT 18 in STEEL	22 EA	
(4) 7	J11	8340-99-132-0028	PIN, TENT 300 MM STEEL	28 EA	
(4) 8	J11	8340-99-555-8571	BAG, TENT FRAME BRACKETS	1 EA	
(4) 9	J11	8340-99-132-0008	RIDGE AND EAVES, BRACKET	15 EA	
(4) 10	J11	8340-99-132-0009	PURLIN, BRACKET	10 EA	
(4) 11	J11	8340-99-132-0010	BASE, BRACKET	10 EA	

Table 5: Shelter Main Items

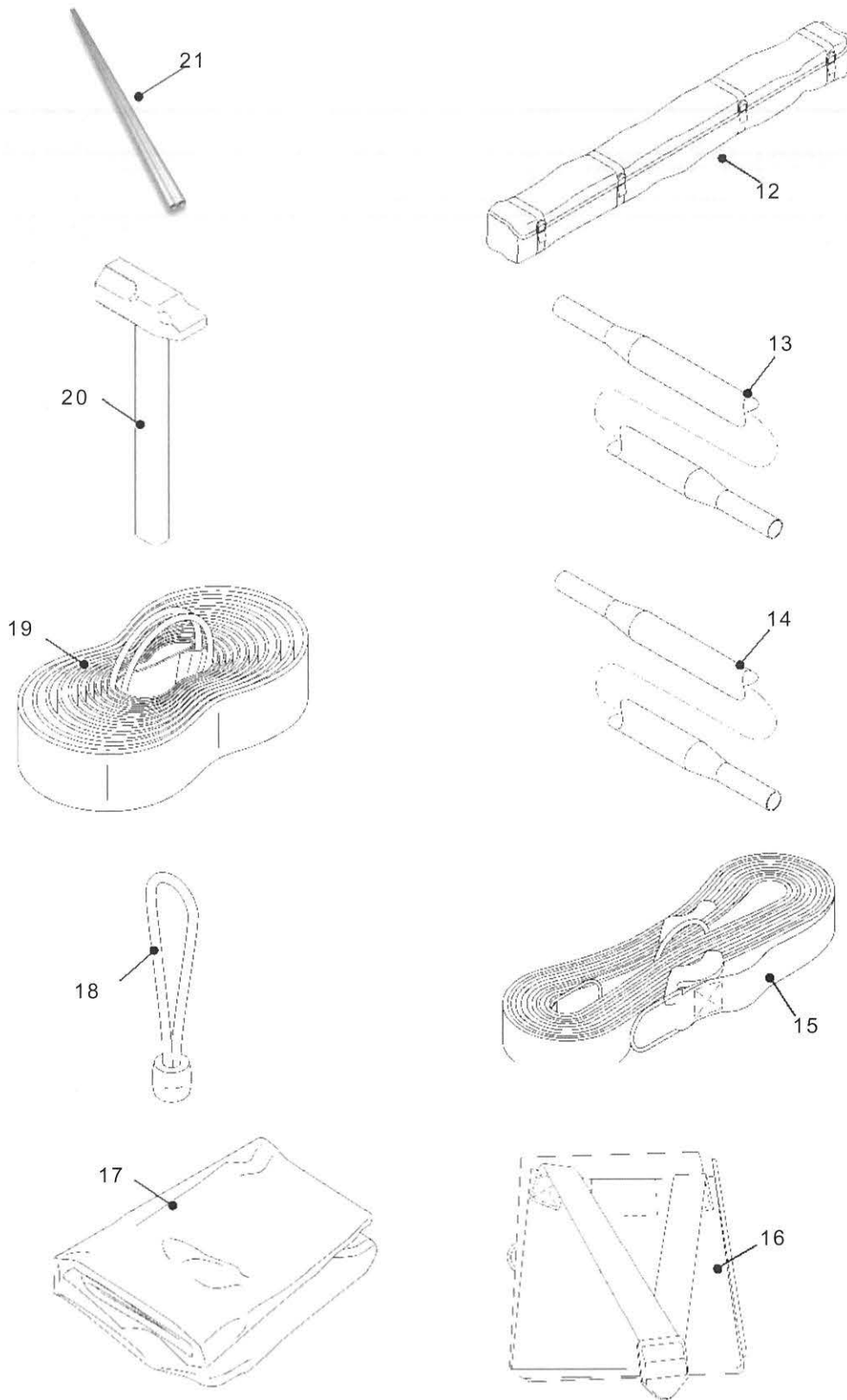


Figure 5: Tent, Shelter, General Purpose 7.3 m x 5.5 m (24 ft x 18 ft) Mk4 continued



Fig. No Item No	Army		Item Description and Annotations	No Off D of Q	Quantity on Issue
	DMC NSCM	NSN Part Number			
(5) 12	J11	8340-99-155-6630	BAG, TENT FRAME POLES	2 EA	
(5) 13	J11	8340-99-132-0006	UNIVERSAL MEMBER, 6 FT	48 EA	
(5) 14	J11	8340-99-132-0007	UNIVERSAL MEMBER, 3 FT	10 EA	
(5) 15	J11	8340-99-126-4530	END GUY, QUICK RELEASE	2 EA	
(5) 16	J11	8340-99-575-0778	OVERSTRAP	1 EA	
(5) 17	J11	8340-99-196-7832	GROUNDSHEET 24 FT X 18 FT	1 EA	
(5) 18	J11	8340-99-865-3035	TENSIONER, LINER AND GROUNDSHEET	24 EA	
(5) 19	F1	8340-99-326-5994	STRAP, BASE RESTRAINT	5 EA	
(5) 20	J11	5120-99-910-4703	HAMMER, HAND	1 EA	
(5) 21	J11	9390-99-477-5695	KEDER RAIL	30 EA	
(5) 22 NI	J11	5340-99-670-7916	RESTRAINT STRAP, GABLE	2 EA	
(5) 23 NI	J11	8340-99-339-5439	STRAP, ADJUSTABLE ROOF RESTRAINT	2 EA	

**Table 6: Shelter Main Items continued**

**NOTE**

Item 21 of Table 6 is only required when utilising the keder system to connect the tent, this is not required if utilising dutch lacing.

**PAGE LEFT INTENTIONALLY BLANK**

CHAPTER 2-2  
COMPLETE EQUIPMENT SCHEDULE (CES)  
MAIN ITEMS FOR NSN 8430-99-421-2154

CONTENTS

Chapter 2-2 .....	1
Complete Equipment Schedule (CES).....	1
Main Items For NSN 8430-99-421-2154 .....	1
Contents .....	1
Shelter Main Items For Both NSN 8430-99-421-2154 .....	3
Insulation Items NSN 8340-99-994-5836.....	7

<b>Fig</b>	<b>Page</b>
Figure 6: Tent, Shelter, General Purpose 7.3 m x 5.5 m (24 ft x 18 ft) Mk4 .....	2
Figure 7: Tent, Shelter, General Purpose 7.3 m x 5.5 m (24 ft x 18 ft) Mk4 continued .....	4
Figure 8: Tent, Insulation, General Purpose 7.3 m x 5.5 m (24 ft x 18 ft) Mk3 .....	6

<b>Table</b>	<b>Page</b>
Table 7: Shelter Main Items .....	3
Table 8: Shelter Main Items continued.....	5
Table 9: Insulation CES .....	7

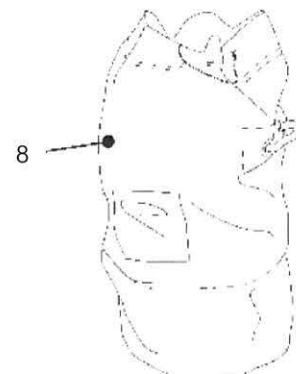
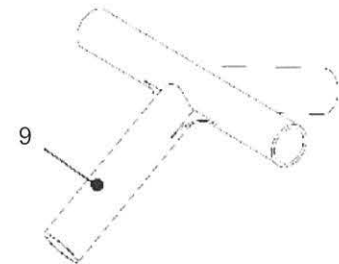
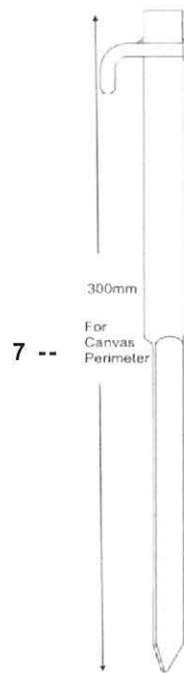
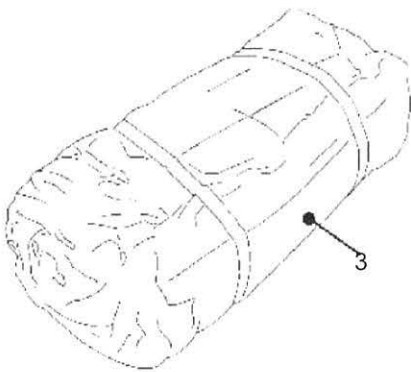
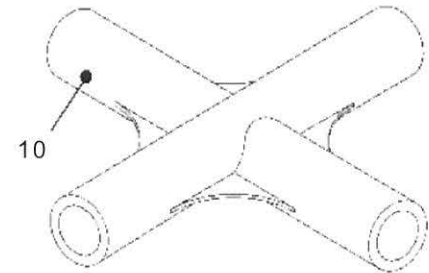
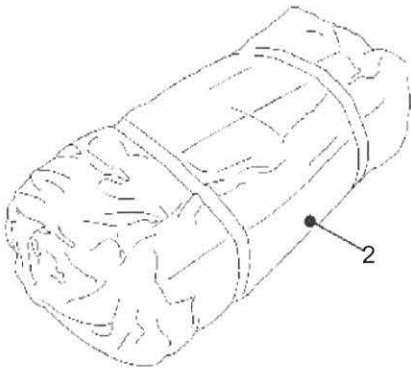
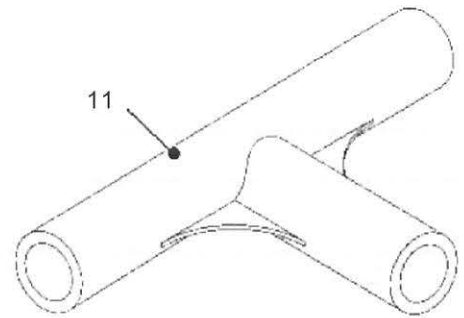
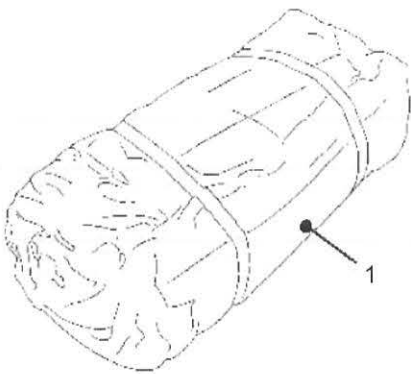


Figure 6: Tent, Shelter, General Purpose 7.3 m x 5.5 m (24 ft x 18 ft) Mk4

SHELTER MAIN ITEMS FOR BOTH NSN 8430-99-421-2154

Fig. No Item No	Army		Item Description and Annotations	No Off D of Q	Quantity on Issue
	DMC NSCM	NSN Part Number			
(6) 1	J11	8340-99-321-2752	VALISE, TENT	3 EA	
(6) 2A	J11	8340-99-155-6628	END SECTION MK 4	2 EA	
(6) 2B	J11	8340-99-177-3894	DUAL ATTACHMENT END SECTION (Alternative to 8340-99-155-6628 for porch or passageway)	0 EA	
(6) 3	J11	8340-99-680-0615	ROOF AND WALLS SECTION MK 4	2 EA	
(6) 4	J11	8340-99-120-7745	CONTAINER, TENT PIN	2 EA	
(6) 5	J11	8340-99-137-3895	PIN, TENT 400 MM STEEL	30 EA	
(6) 6	J11	8340-99-943-9052	PIN, TENT 18 in STEEL	22 EA	
(6) 7	J11	8340-99-132-0028	PIN, TENT 300 MM STEEL	28 EA	
(6) 8	J11	8340-99-555-8571	BAG, TENT FRAME BRACKETS	1 EA	
(6) 9	J11	8340-99-132-0008	RIDGE AND EAVES, BRACKET	15 EA	
(6) 10	J11	8340-99-132-0009	PURLIN, BRACKET	10 EA	
(6) 11	J11	8340-99-132-0010	BASE, BRACKET	10 EA	

Table 7: Shelter Main Items

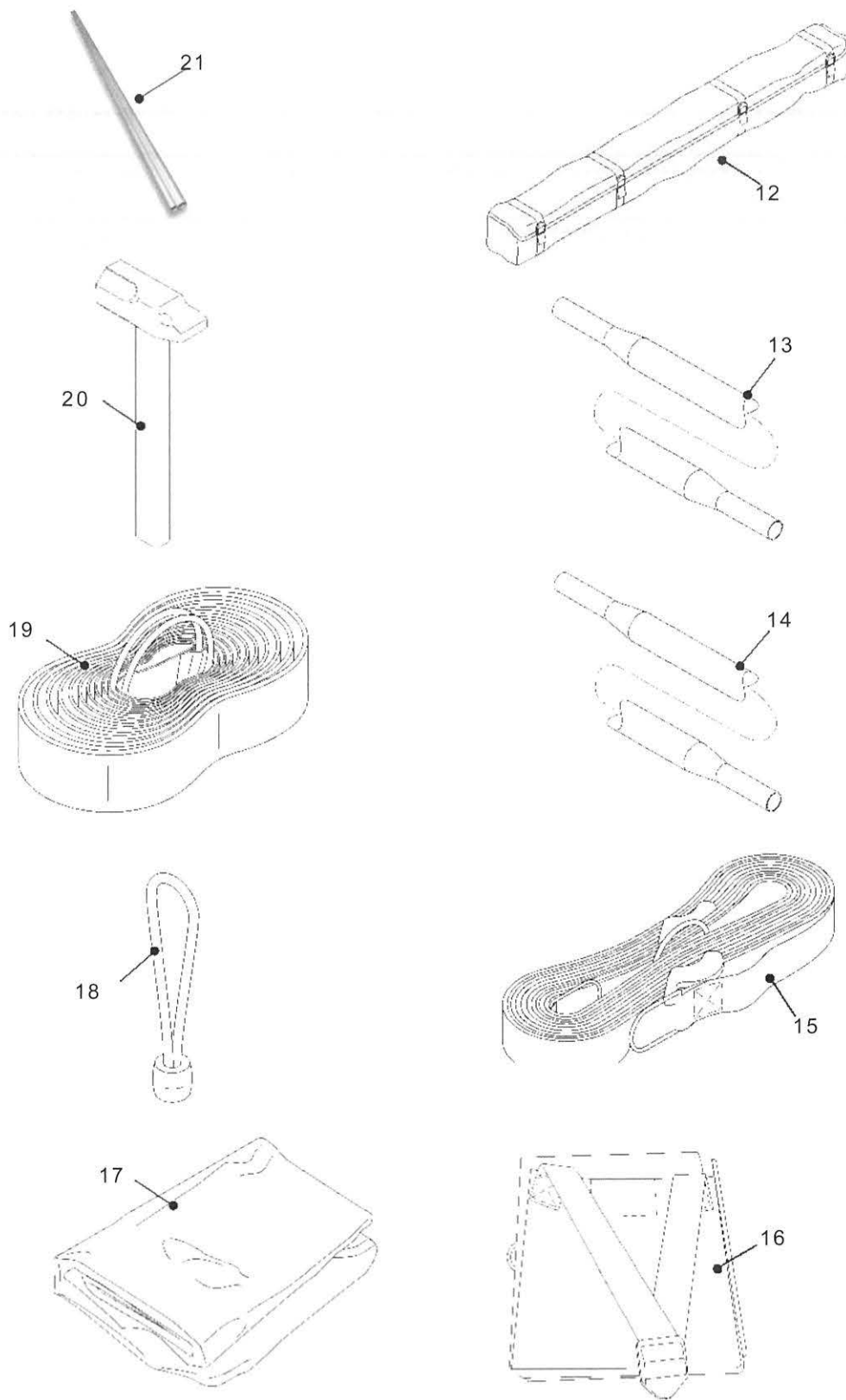


Figure 7: Tent, Shelter, General Purpose 7.3 m x 5.5 m (24 ft x 18 ft) Mk4 continued

Fig. No Item No	Army		Item Description and Annotations	No Off D of Q	Quantity on Issue
	DMC NSCM	NSN Part Number			
(7) 12	J11	8340-99-155-6630	BAG, TENT FRAME POLES	2 EA	
(7) 13	J11	8340-99-132-0006	UNIVERSAL MEMBER, 6 FT	48 EA	
(7) 14	J11	8340-99-132-0007	UNIVERSAL MEMBER, 3 FT	10 EA	
(7) 15	J11	8340-99-126-4530	END GUY, QUICK RELEASE	2 EA	
(7) 16	J11	8340-99-575-0778	OVERSTRAP	1 EA	
(7) 17	J11	8340-99-196-7832	GROUNDSHEET 24 FT X 18 FT	1 EA	
(7) 18	J11	8340-99-865-3035	TENSIONER, LINER AND GROUNDSHEET	24 EA	
(7) 19	F1	8340-99-326-5994	STRAP, BASE RESTRAINT	5 EA	
(7) 20	J11	5120-99-910-4703	HAMMER, HAND	1 EA	
(7) 21	J11	9390-99-477-5695	KEDER RAIL	30 EA	
(7) 22 NI	J11	5340-99-670-7916	RESTRAINT STRAP, GABLE	2 EA	
(7) 23 NI	J11	8340-99-339-5439	STRAP, ADJUSTABLE ROOF RESTRAINT	2 EA	

**Table 8: Shelter Main Items continued**

**NOTE**

Item 21 of Table 8 is only required when utilising the keder system to connect the tent, this is not required if utilising dutch lacing.

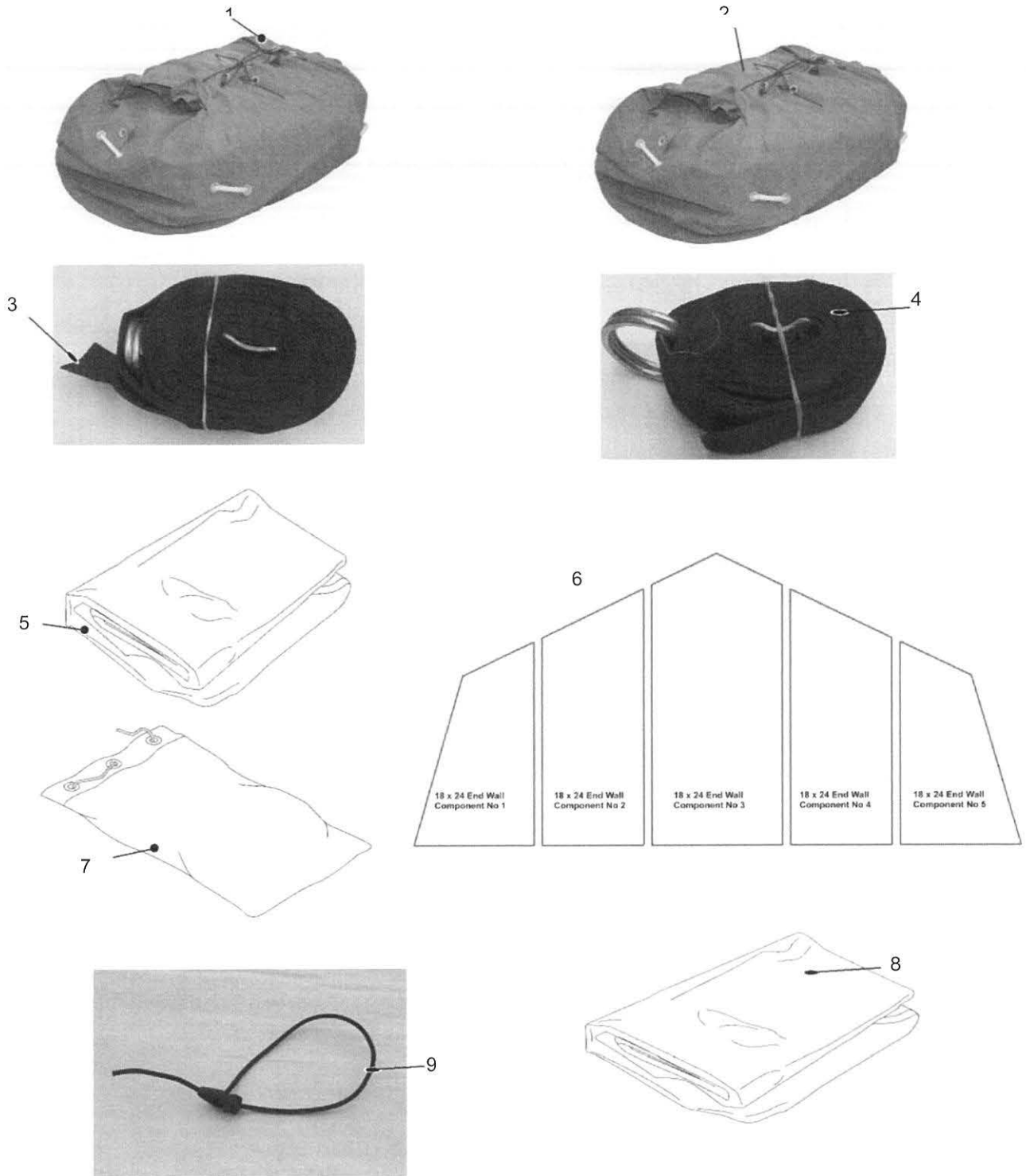


Figure 8: Tent, Insulation, General Purpose 7.3 m x 5.5 m (24 ft x 18 ft) Mk3



INSULATION ITEMS NSN 8340-99-994-5836

Fig. No Item No	Army		Item Description and Annotations	No Off D of Q	Quantity on Issue
	DMC NSCM	NSN Part Number			
(8) 0	J11	8340-99-994-5836	INSULATION PACK	REF	
(8) 1	J11	8105-99-351-4536	BAG TRANSIT & STORAGE INSULATION 1 PIECE ROOF	1 EA	
(8) 2	J11	8105-99-216-3569	BAG TRANSIT & STORAGE INSULATION	2 EA	
(8) 3	J11	8340-99-339-5439	STRAP, ADJUSTABLE ROOF RESTRAINT	2 EA	
(8) 4	J11	8340-99-425-9476	STRAP, ADJUSTABLE, INSULATION SUPPORT	4 EA	
(8) 5	J11	8340-99-464-4712	INSULATION PANEL, ROOF	1 EA	
(8) 6	J11	8340-99-447-9990	INSULATION PANEL, END WALL MK 4	2 EA	
(8) 6	J11	8340-99-269-4245	COMPONENT NO 1 INSULATION PANEL, END WALL MK 4	2 EA	See Note
(8) 6	J11	8340-99-299-1066	COMPONENT NO 2 INSULATION PANEL, END WALL MK 4	2 EA	See Note
(8) 6	J11	8340-99-410-5250	COMPONENT NO 3 INSULATION PANEL, END WALL MK 4	2 EA	See Note
(8) 6	J11	8340-99-553-9009	COMPONENT NO 4 INSULATION PANEL, END WALL MK 4	2 EA	See Note
(8) 6	J11	8340-99-870-2567	COMPONENT NO 5 INSULATION PANEL, END WALL MK 4	2 EA	See Note
(8) 7	J11	8105-99-474-7838	BAG, TRANSIT & STORAGE STRAP SET, GS SHELTER VARIOUS	1 EA	
(8) NI	J11	8340-99-727-5223	SIDE WALL INSULATION PANEL	4 EA	
(8) 8	J11	8340-99-985-9678	COMPONENT No 1 INSULATION PANEL, SIDE WALL MK 4	16 EA	
(8) NI	J11	8340-99-398-7468	COMPONENT No 2 HVAC INSULATION PANEL, SIDE WALL MK 4	1 EA	
(8) 9	J11	4020-99-908-8176	TENSIONER	150 EA	

Table 9: Insulation CES

**NOTE**

Item 3 in Table must be fitted with insulation and is now part of the Main Items CES.

Item 6 in Table 9 INSULATION PANEL, END WALL MK 4, NSN 8340-99-447-9990 includes the following panels: -

COMPONENT NO 1 INSULATION PANEL, END WALL MK 4 NSN 8340-99-269-4245  
COMPONENT NO 2 INSULATION PANEL, END WALL MK 4 NSN 8340-99-299-1066  
COMPONENT NO 3 INSULATION PANEL, END WALL MK 4 NSN 8340-99-410-5250  
COMPONENT NO 4 INSULATION PANEL, END WALL MK 4 NSN 8340-99-553-9009  
COMPONENT NO 5 INSULATION PANEL, END WALL MK 4 NSN 8340-99-870-2567

These components should only be demanded when replacing a damaged component of the end wall.

CHAPTER 2-3

COMPLETE EQUIPMENT SCHEDULE (CES)

HARD FLOORING FOR NSN 8430-99-551-0054

CONTENTS

Chapter 2-3 .....	1
Complete Equipment Schedule (CES).....	1
Hard Flooring For NSN 8430-99-551-0054.....	1
Contents .....	1
Hard Flooring List NSN 8340-99-551-0054 .....	3

<b>Fig</b>	<b>Page</b>
Figure 9: Hard Flooring.....	2

<b>Table</b>	<b>Page</b>
Table 10: Hard Floor NSN 8340-99-551-0054.....	3

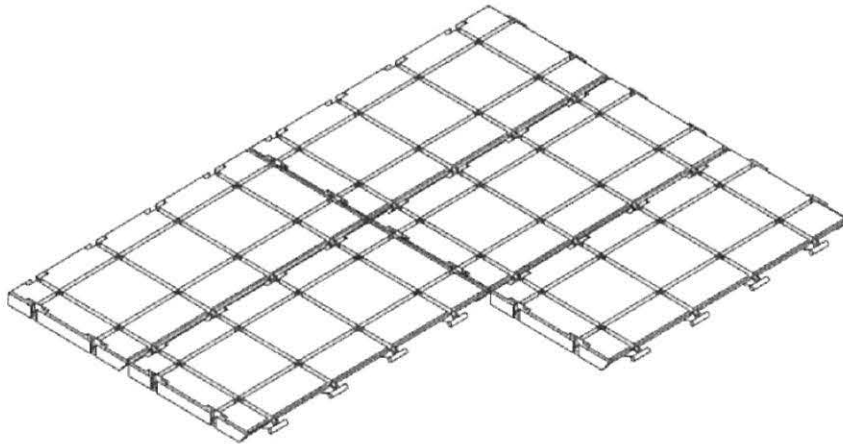


Figure 9: Hard Flooring

HARD FLOORING LIST NSN 8340-99-551-0054

Fig. No Item No	Army		Item Description and Annotations	No Off D of Q	Quantity on Issue
	DMC NSCM	NSN Part Number			
(9) 1	J11	8340-99-551-0054	HARD FLOORING (m <sup>2</sup> )	47 m <sup>2</sup>	

Table 10: Hard Floor NSN 8340-99-551-0054

**PAGE LEFT INTENTIONALLY BLANK**

CHAPTER 2-4

COMPLETE EQUIPMENT SCHEDULE (CES)

REPAIR KIT

CONTENTS

CHAPTER 2-4 .....	1
COMPLETE EQUIPMENT SCHEDULE (CES) .....	1
REPAIR KIT .....	1
CONTENTS .....	1

<b>Fig</b>	<b>Page</b>
Figure 10: Repair Kit.....	2

<b>Table</b>	<b>Page</b>
Table 11: Repair Kit NSN 8340-99-362-8303 .....	3

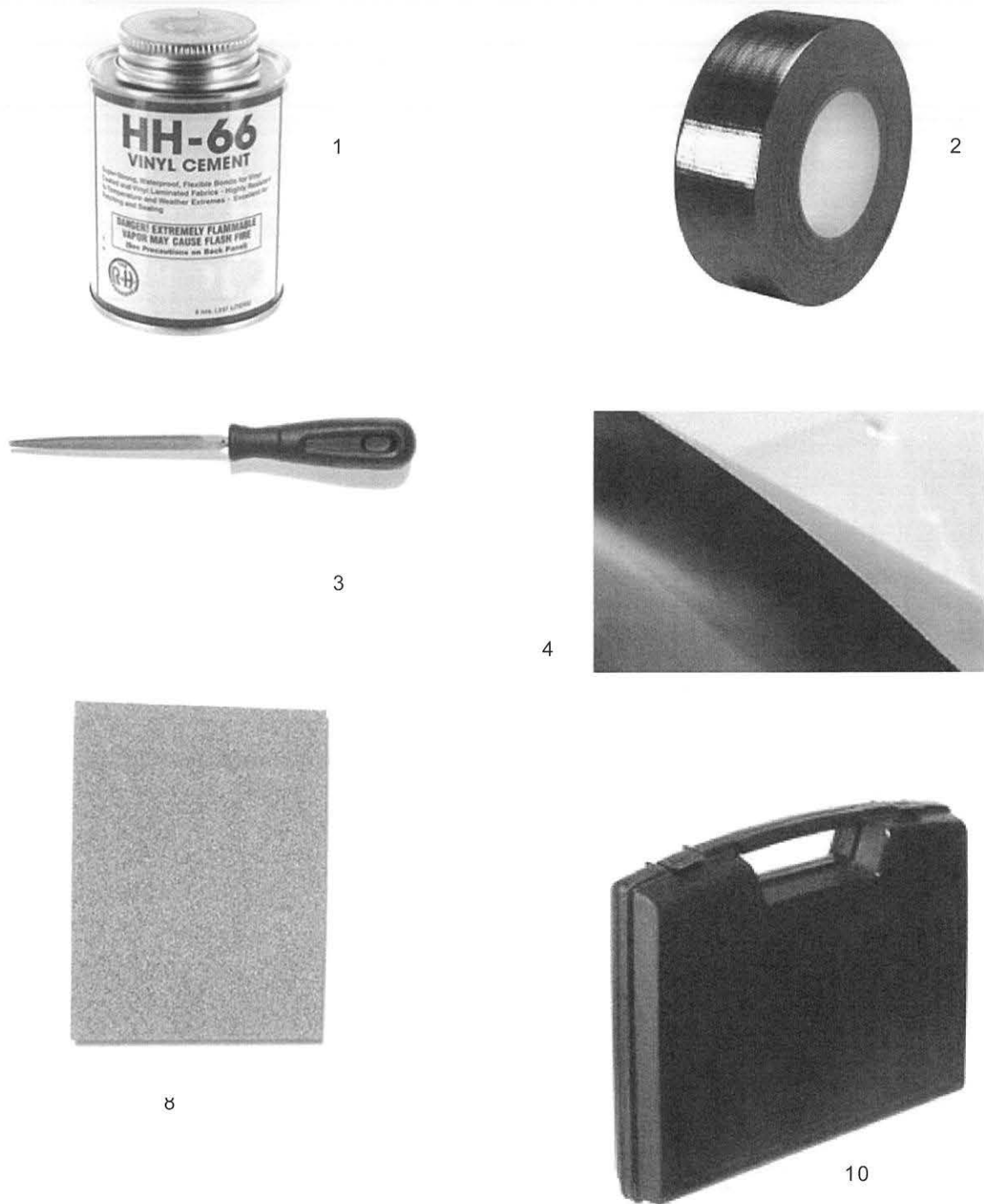


Figure 10: Repair Kit



Fig. No Item No	Army		Item Description and Annotations	No Off D of Q	Quantity on Issue
	DMC NSCM	NSN Part Number			
0	J11	8340-99-362-8303	REPAIR KIT, TENTAGE	1	
(10) 1		HH-66-100ml	HH-66 VINYL CEMENT – TIN 236ml	1 EA	
(10) 2		002041	BLACK ADHESIVE TAPE	1 EA	
(10) 3		002044	TRIANGULAR FILE	1 EA	
(10) 4		003/P5001	STANDARD FABRIC - GREEN GREY	1 m2	
(10) 5		004/P5001	OFCS FABRIC - GREEN GREEN	1 m2	
NI (10) 6		005/P5001	FLOOR FABRIC - GREEN	1 m2	
NI (10) 7		006/P5001	FLY SCREEN MATERIAL	1 m2	
(10) 8		002045	SANDING PAPER	1 EA	
(10) 9		002042	CUTTER 18mm	1 EA	
(10) 10		004402	PLASTIC BOX	1 EA	
(10) 11		007/P5001	REPAIR INSTRUCTION SHEET	1 EA	
NI (10) 12		HH-66 & PVC Canvas	SAFETY DATA SHEET	1 EA	

Table 11: Repair Kit NSN 8340-99-362-8303

**PAGE LEFT INTENTIONALLY BLANK**

**CHAPTER 3**

**INDEXES**

**CONTENTS**

Chapter 3..... 1  
Introduction..... 1

**INTRODUCTION**

1. This Chapter identifies the indexes provided in support to the main parts list.

**PAGE LEFT INTENTIONALLY BLANK**

CHAPTER 3-1

INDEX OF NATO STOCK NUMBERS

CONTENTS

Chapter 3-1 .....	1
Index Of Nato Stock Numbers .....	1
Index Of Nato Stock Numbers .....	2
Comments (S) On AESP* .....	3
<b>Table</b>	<b>Page</b>
Table 12: Index of NATO Stock Numbers.....	2

## INDEX OF NATO STOCK NUMBERS

NATO STOCK NUMBER	CHAPTER 2-SUB-CHAP	FIG & ITEM	NATO STOCK NUMBER	CHAPTER 2-SUB-CHAP	FIG & ITEM
8340-99-321-2752	2-1	4-1	8340-99-126-4530	2-2	7-15
8340-99-155-6628	2-1	4-2A	8340-99-575-0778	2-2	7-16
8340-99-177-3894	2-1	4-2B	8340-99-196-7832	2-2	7-17
8340-99-680-0615	2-1	4-3	8340-99-865-3035	2-2	7-18
8340-99-120-7745	2-1	4-4	8340-99-326-5994	2-2	7-19
8340-99-137-3895	2-1	4-5	5120-99-910-4703	2-2	7-20
8340-99-132-0028	2-1	4-6	9390-99-477-5695	2-2	7-21
8340-99-943-9052	2-1	4-7	5340-99-670-7916	2-2	7-22
8340-99-555-8571	2-1	4-8	8340-99-339-5439	2-2	7-23
8340-99-132-0008	2-1	4-9	8340-99-994-5836	2-2	8-0
8340-99-132-0009	2-1	4-10	8105-99-351-4536	2-2	8-1
8340-99-132-0010	2-1	4-11	8105-99-216-3569	2-2	8-2
8340-99-155-6630	2-1	5-12	8340-99-339-5439	2-2	8-3
8340-99-132-0006	2-1	5-13	8340-99-425-9476	2-2	8-4
8340-99-132-0007	2-1	5-14	8340-99-464-4712	2-2	8-5
8340-99-126-4530	2-1	5-15	8340-99-447-9990	2-2	8-6
8340-99-575-0778	2-1	5-16	8340-99-269-4245	2-2	8-7
8340-99-196-7832	2-1	5-17	8340-99-299-1066	2-2	8-8
8340-99-865-3035	2-1	5-18	8340-99-410-5250	2-2	8-9
8340-99-326-5994	2-1	5-19	8340-99-553-9009	2-2	8-10
5120-99-910-4703	2-1	5-20	8340-99-870-2567	2-2	8-11
9390-99-477-5695	2-1	5-21	8105-99-474-7838	2-2	8-12
5340-99-670-7916	2-1	5-22	8340-99-727-5223	2-2	8-NI
8340-99-339-5439	2-2	7-23	8340-99-985-9678	2-2	8-8
8340-99-321-2752	2-2	6-1	8340-99-398-7468	2-2	8-NI
8340-99-155-6628	2-2	6-2A	4020-99-908-8176	2-2	8-9
8340-99-177-3894	2-2	6-2B	8340-99-551-0054	2-3	9-1
8340-99-680-0615	2-2	6-3	8340-99-362-8303	2-4	10-0
8340-99-120-7745	2-2	6-4			
8340-99-137-3895	2-2	6-5			
8340-99-132-0028	2-2	6-6			
8340-99-943-9052	2-2	6-7			
8340-99-555-8571	2-2	6-8			
8340-99-132-0008	2-2	6-9			
8340-99-132-0009	2-2	6-10			
8340-99-132-0010	2-2	6-11			
8340-99-155-6630	2-2	7-12			
8340-99-132-0006	2-2	7-13			
8340-99-132-0007	2-2	7-14			

Table 12: Index of NATO Stock Numbers

**ARMY EQUIPMENT AND SUPPORT PUBLICATION (AESP) AND ELECTRICAL AND MECHANICAL ENGINEERING REGULATIONS (EMER) - FORM 10**

*AESP/EMER NUMBER:		*IS THIS SAFETY RELATED?    Yes    No	
Send Form 10 via email or post. However, email is <u>preferred</u> .		Tel	[REDACTED]
Email: [REDACTED]	Post to	[REDACTED]	[REDACTED]
<b>ORIGINATORS DETAILS</b>			
*Address			*Name
			Rank / Grade
			*Phone
			*Senders Reference
			*Date Raised
* E-Mail			Eqpt Asset Code (if applicable)
<b>AESP/EMER DETAILS</b>			
*Full Title of AESP/EMER (Not the AESP/EMER Number)			
*Edition	*Amendment	*Chapter	*Page
			*Paragraph
			Figure
			Instruction
			Other
*Comments: If additional information is to be supplied, please e-mail with the Form 10 as separate attachments.			
<b>FORM 10 CELL USE</b>			
*Date Received		*Form 10 Reference	
*Date Sent to PT / SME		Problem Report	
<b>PROJECT TEAM / SME RESPONSE TO COMMENTS:</b>			
Project Team (PT) / SME		*Sponsors Name	
*Phone		Rank / Grade	
*Email		*Date Received	
*The following action is to be carried out:	Mark:		Mark:
Issue a revised/amended AESP/EMER:		Under investigation:	
Incorporate comment(s) in future amendments:		No action required:	
<b>Remarks:</b>			
<b>SPONSOR/PT FINAL CLOSURE STEPS</b>		Mark:	Date:
Form 10 Originator notified of the action taken:			
		Form 10 Cell notified of Date action taken	

## **Form 10 Guidance**

**Originator responsibility** is to enter the following details marked \*:

- In the **AESP/EMER Number:** cell enter the full document number e.g. AESP 1256-I-400-711.
- Is this **Safety Related?** – select Yes or No as appropriate.
- Originator Details:
  - Full address Inc Post Code or BFPO NO.
  - Originator email address.
  - Senders Reference – that must be unique.
- AESP Details shall enter the following details:
  - The Full Title of AESP/EMER should not include the AESP/EMER Number.
  - Enter details in all other mandatory fields marked \*.
  - Additional information relating to the Comments (AESP copies, additional text details or photographs) should be attached to the Email at the same time.
- Originator makes up the Form 10 & Sends to Form 10 cell via
  - Email: Save a copy of the form and send to [REDACTED] Copy the address and paste it into your email client.
  - Post to Form 10 Cell, FRACAS BFPO 794.
  - **Any AESP that holds a Security marking higher than 'Restricted' should be securely circulated.**

### **FORM 10 CELL responsibilities:**

The Form 10 Cell enters:

- Date Received.
- Form 10 Reference.
- Date sent to Sponsor.
- Register all Form 10 details in the MOSS Form 10 Tracker.

### **Sponsor Responsibility**

The Sponsor will:

- Enter their name, email address & phone contact details.
- Enter Date Received.
- Enter Details in the non-mandatory field as & when required.
- Acknowledge receipt of Form 10, within 5 working days, by email to Form 10 Cell.
- Assess the contents of comments and details received.
- Mark the relevant Action box and fill out the Remarks field.
- Enter date when the Form 10 is returned to Form 10 Cell.
- Email copy of completed Form 10, within 6 weeks, to the Form 10 Cell and Originator.

### **Form 10 Cell on receipt will:**

- Record final stage of the Form 10 into the MOSS Form 10 Tracker.
- Close off the Form 10 and archive.

AESP Form 10 (Issue 6.2 dated July 13)

\* Mandatory Fields for Originator

\* Mandatory Fields for Sponsor.