

Dynamic CO-CIN report to SAGE and NERVTAG

Executive summary

Includes patients admitted on or after 01 May 2021

There are 49622 patients included in CO-CIN. Of these, 5421 patient(s) have died and 7863 required ICU. 37179 have been discharged home.

Admission

Figure 1

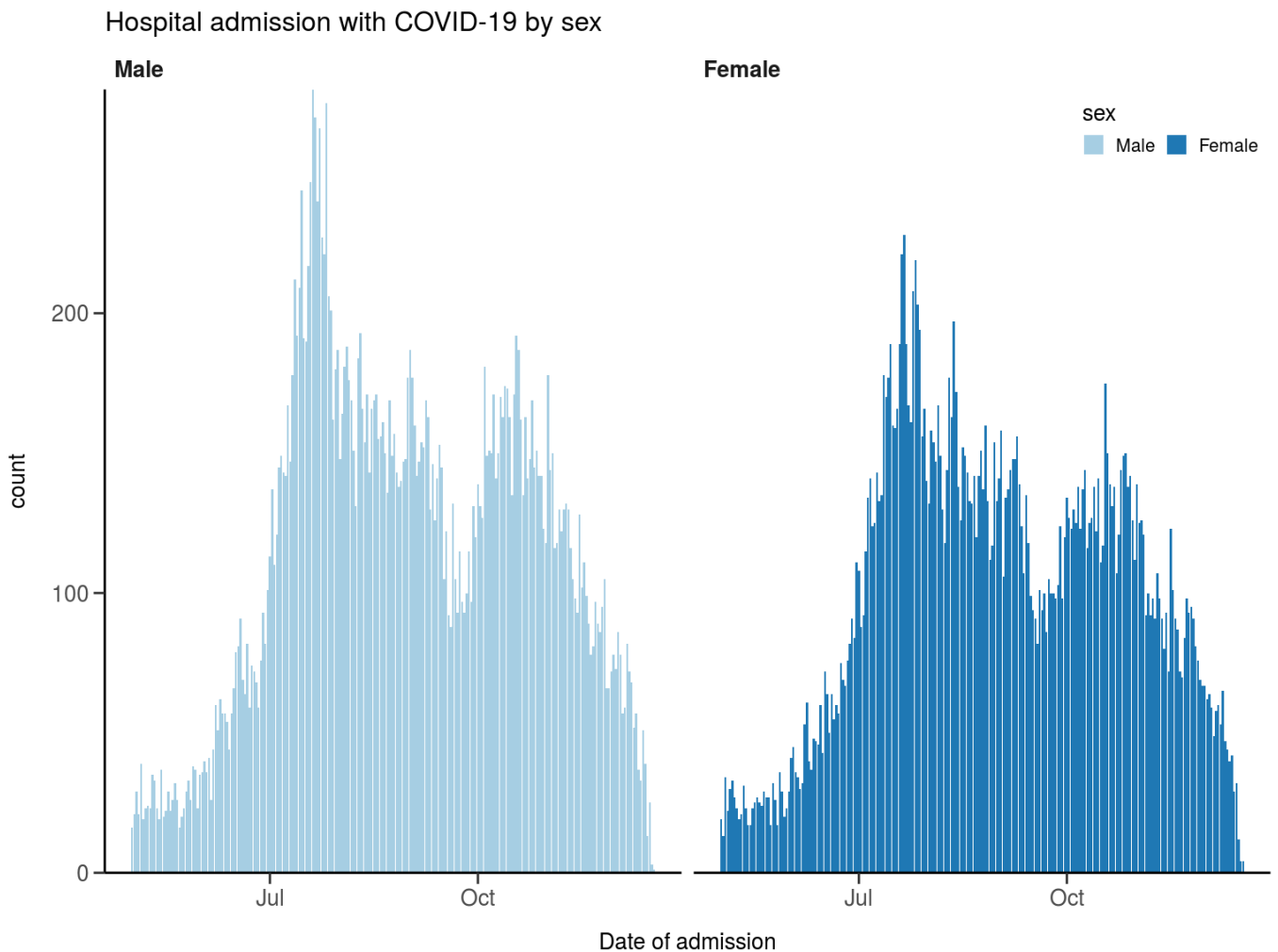
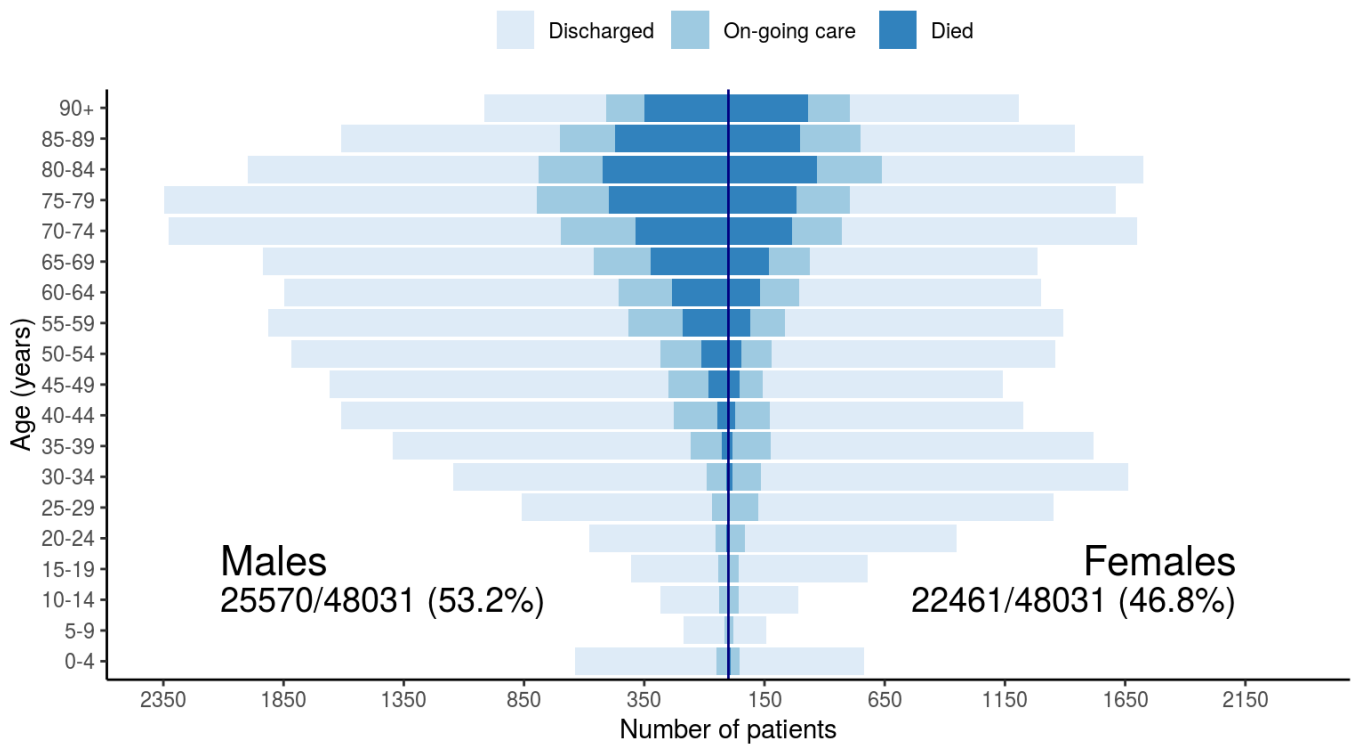


Figure 2

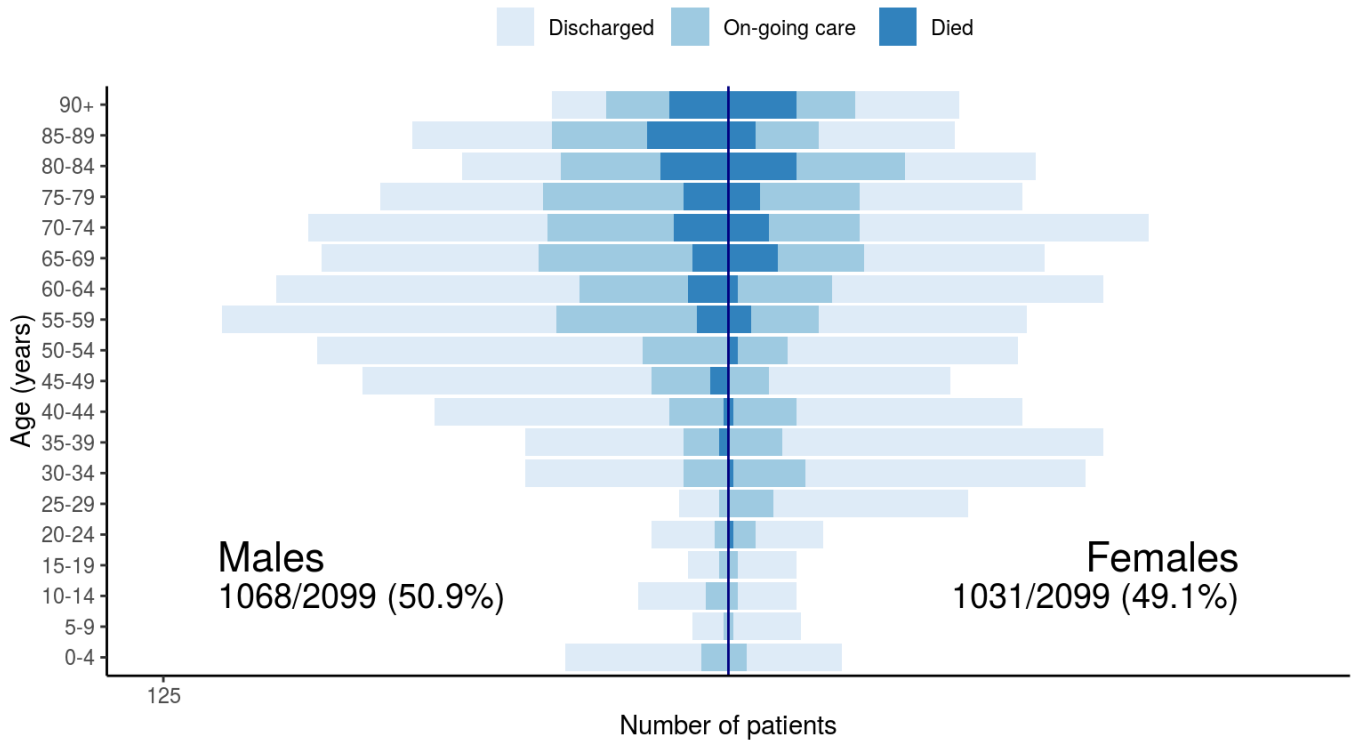
Patients with outcome stratified by age, and sex

All



Patients with outcome stratified by age, and sex

Admitted ≥ 14 days and ≤ 28 days ago

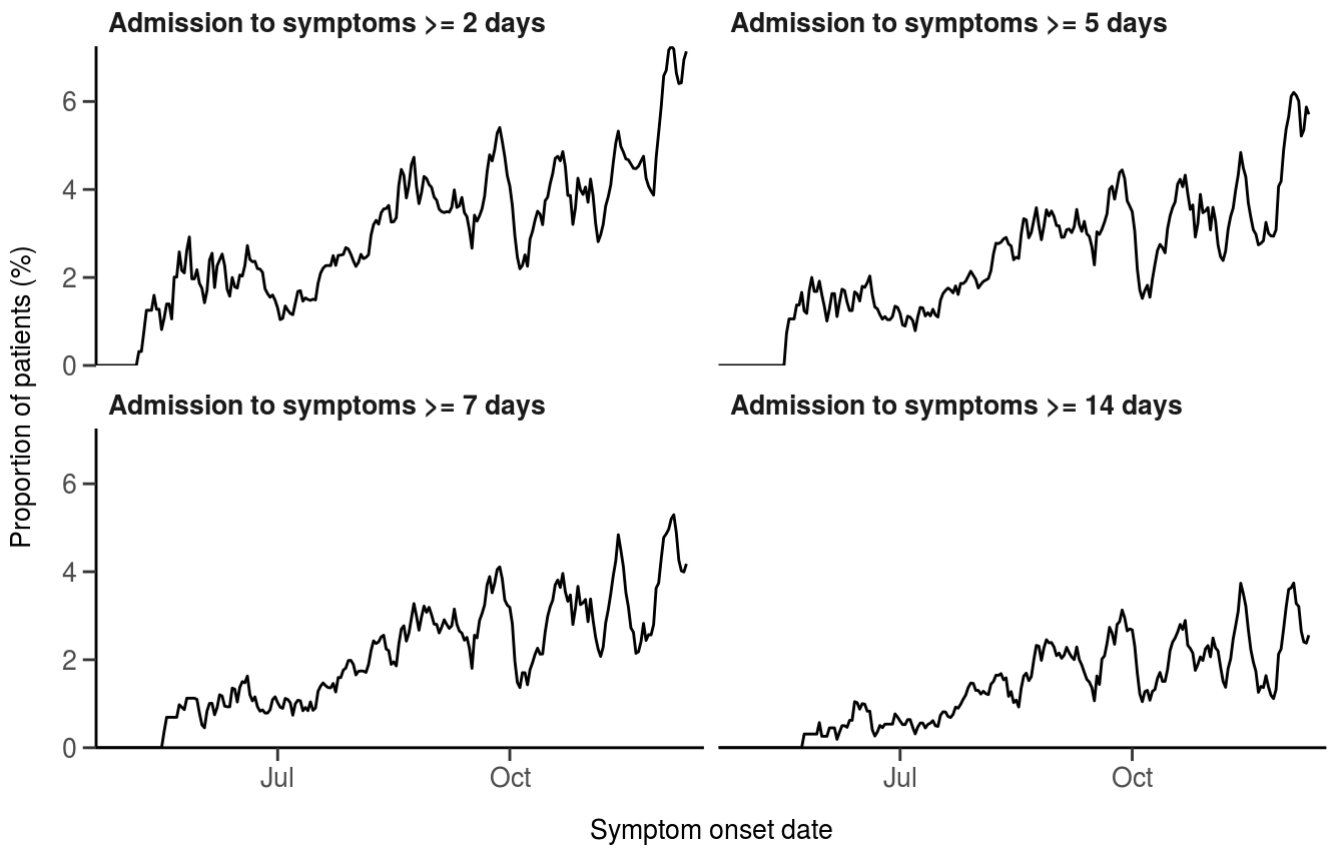


Nosocomial

Figure 3

Proportion with symptom onset occurring after hospital admission

7-day rolling percentage. n = 39165



Patient flow

Figure 4A - All patients

N = 48456

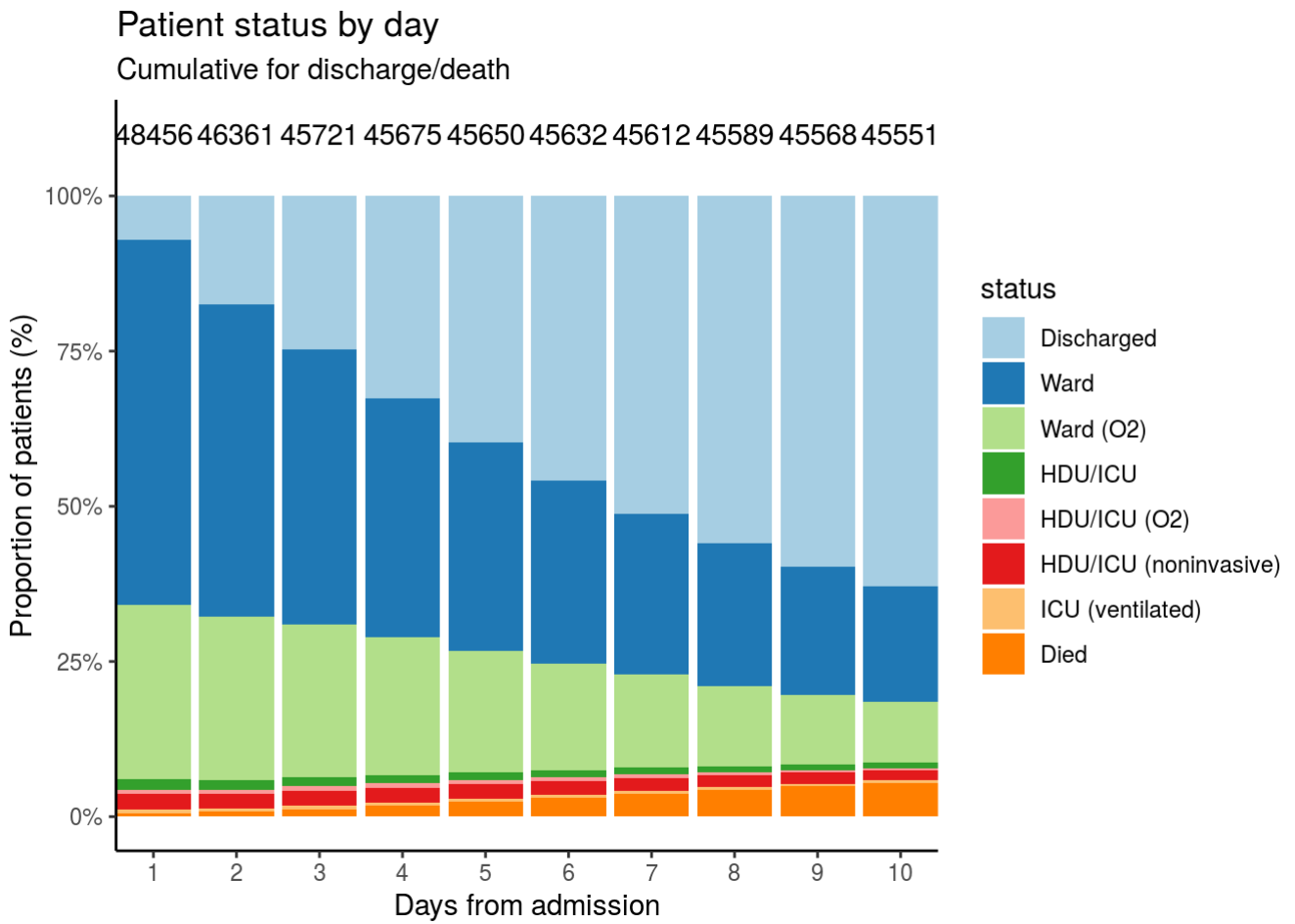
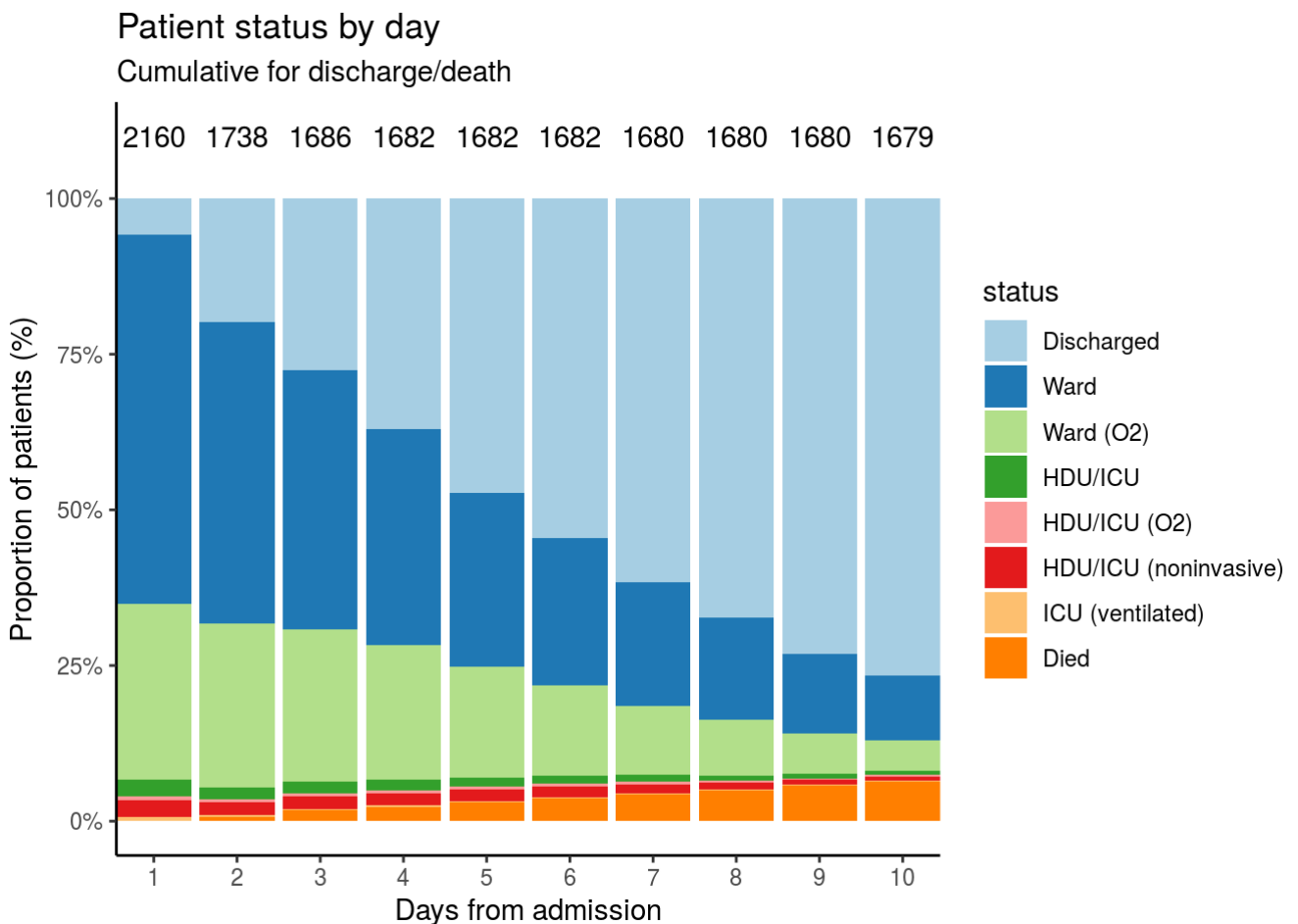


Figure 4B - Patients admitted ≥ 14 days and ≤ 28 days ago

N = 2160



Oxygen requirement

Figure 5A - All patients

N = 46519

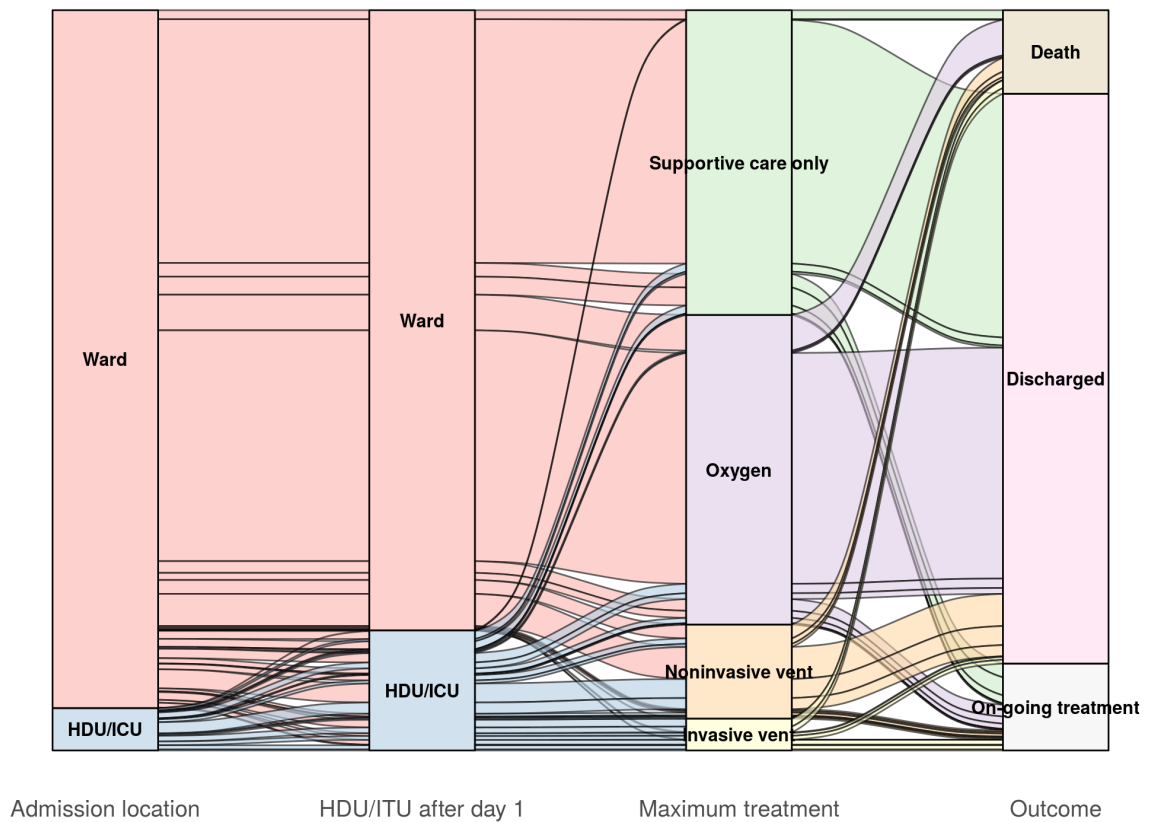


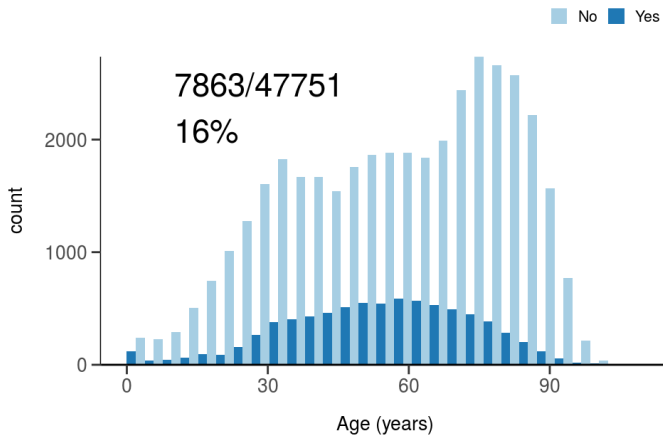
Figure 5B - Patients admitted ≥ 14 days and ≤ 28 days ago

N = 2127

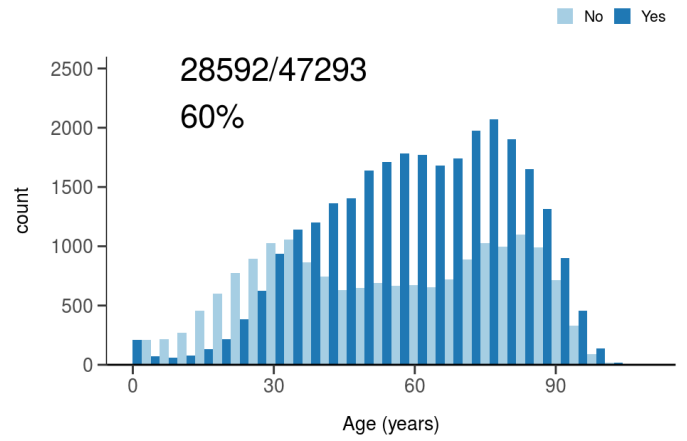
Treatment

Figure 6

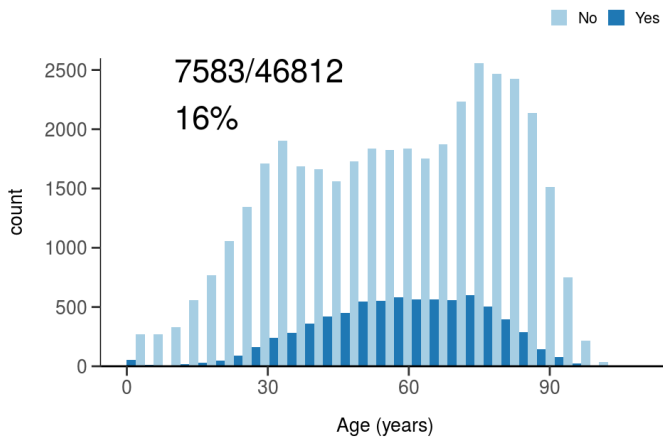
ICU/HDU admission
Figure 10A



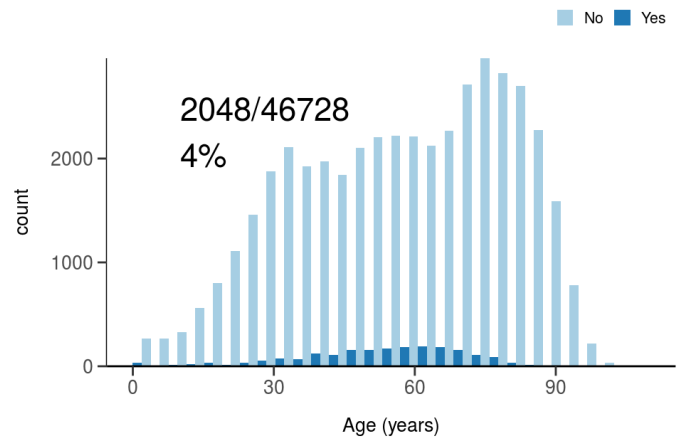
High flow oxygen
Figure 10B



Noninvasive ventilation
Figure 10C



Invasive ventilation
Figure 10D



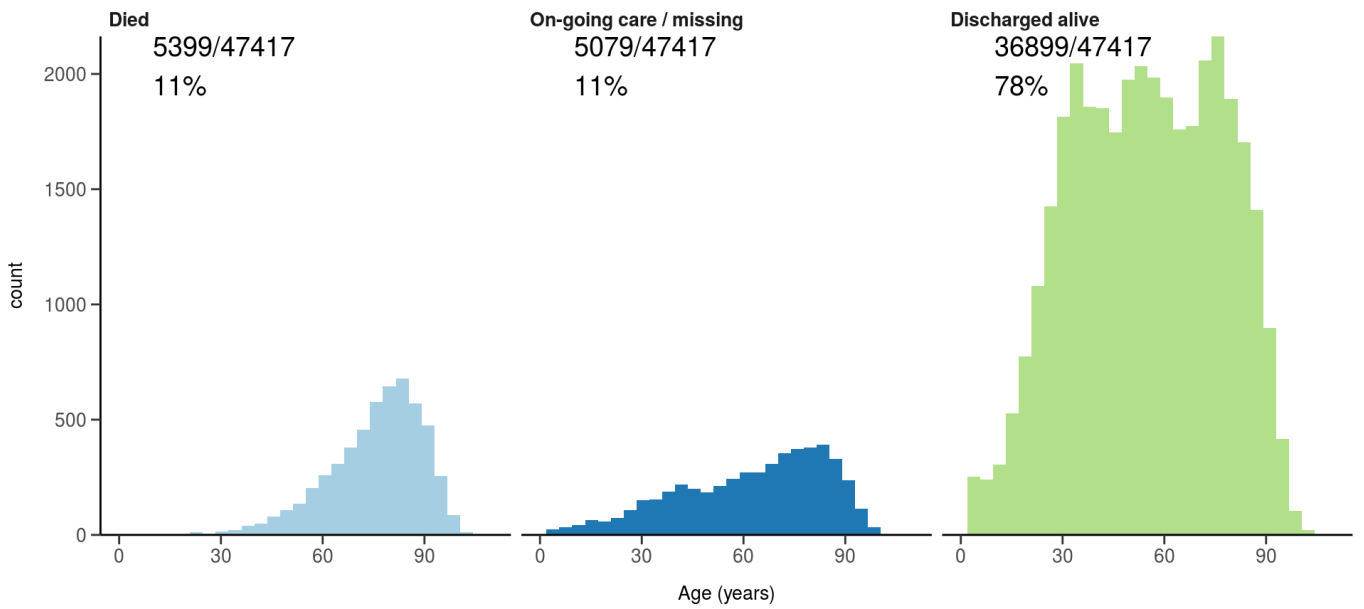
Status in patients admitted ≥ 14 days from today

Figure 7

Where outcome is not reported, on-going care is assumed.

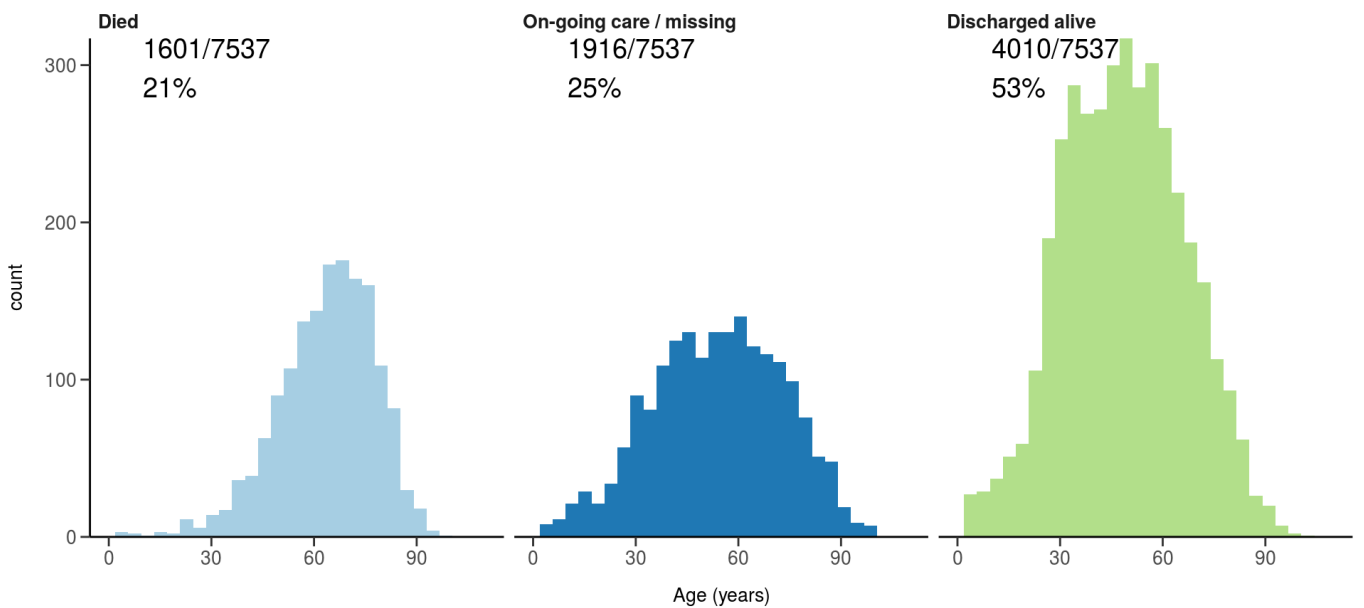
All: status in patients admitted ≥ 14 days ago

Figure 11A



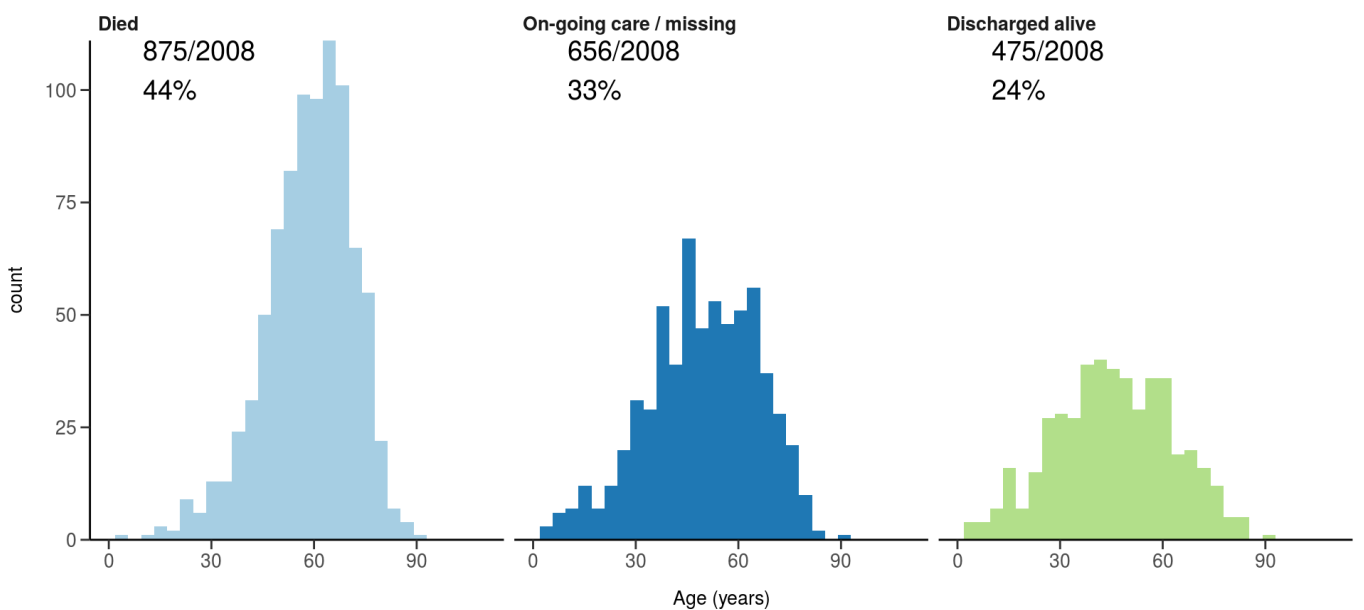
ICU/HDU admissions: status in patients admitted ≥ 14 days ago

Figure 11B



Invasive ventilation: status in patients admitted ≥ 14 days ago

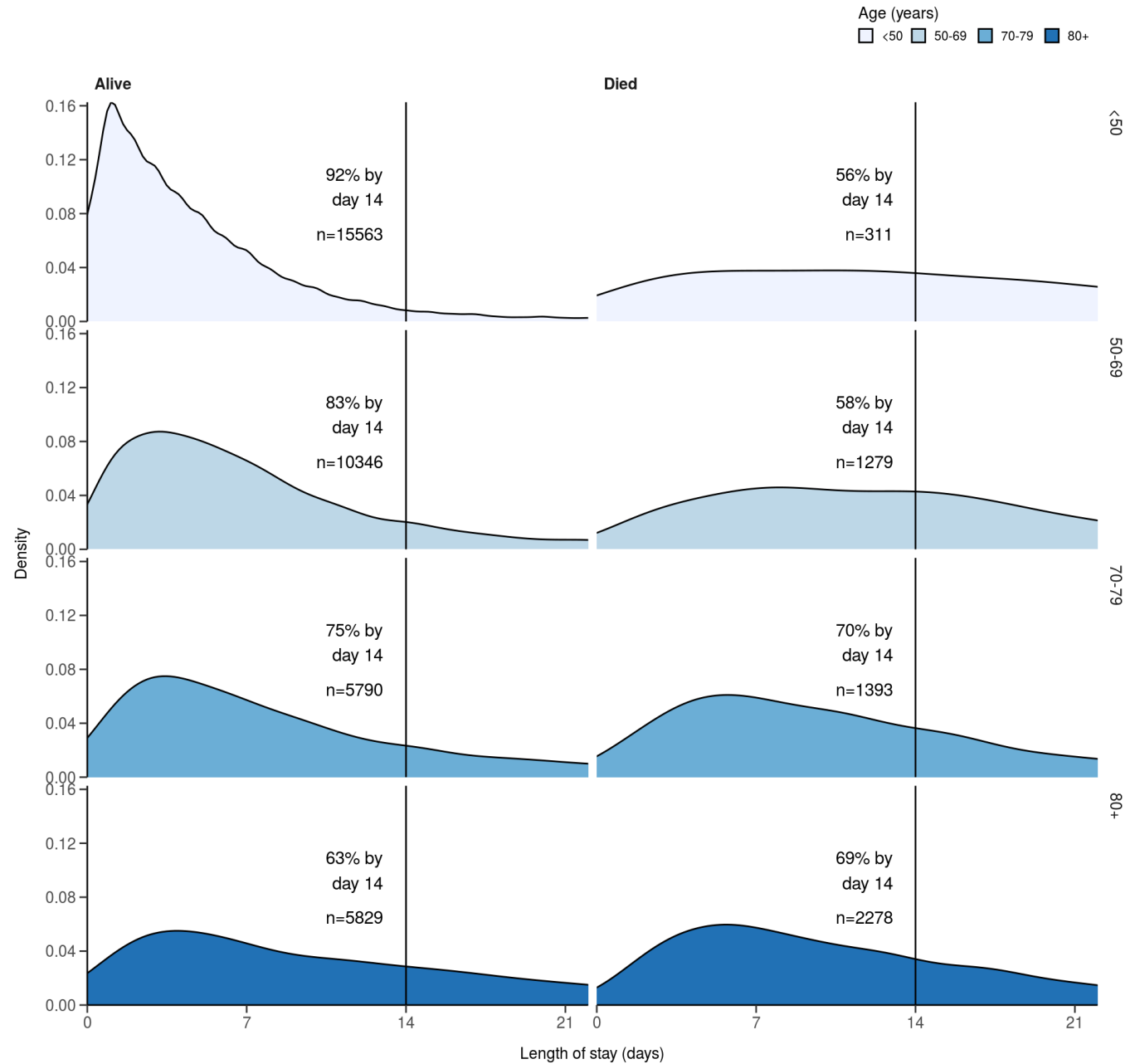
Figure 11c



Length of stay stratified by age

####Figure 8

Length of stay stratified by age and mortality
Proportion who reach outcome by day 14 shown



Data

Table for figure 2A

age.factor	sex	status	n
0-4	Male	Discharged	585
0-4	Male	On-going care	46
0-4	Male	Died	5
0-4	Female	Discharged	517

age.factor	sex	status	n
0-4	Female	On-going care	38
0-4	Female	Died	9
5-9	Male	Discharged	170
5-9	Male	On-going care	18
5-9	Female	Discharged	136
5-9	Female	On-going care	19
5-9	Female	Died	2
10-14	Male	Discharged	242
10-14	Male	On-going care	39
10-14	Female	Discharged	248
10-14	Female	On-going care	41
10-14	Female	Died	3
10-14	NA	Discharged	1
15-19	Male	Discharged	361
15-19	Male	On-going care	42
15-19	Male	Died	1
15-19	Female	Discharged	536
15-19	Female	On-going care	40
15-19	Female	Died	3
15-19	Not specified	On-going care	1
20-24	Male	Discharged	525
20-24	Male	On-going care	46
20-24	Male	Died	8
20-24	Female	Discharged	881
20-24	Female	On-going care	63
20-24	Female	Died	4
20-24	Not specified	On-going care	1
20-24	Not specified	Died	1
25-29	Male	Discharged	791
25-29	Male	On-going care	65
25-29	Male	Died	5
25-29	Female	Discharged	1230

age.factor	sex	status	n
25-29	Female	On-going care	116
25-29	Female	Died	7
25-29	Not specified	Discharged	2
25-29	NA	Discharged	1
30-34	Male	Discharged	1054
30-34	Male	On-going care	80
30-34	Male	Died	9
30-34	Female	Discharged	1528
30-34	Female	On-going care	121
30-34	Female	Died	15
30-34	Not specified	Discharged	3
30-34	NA	Died	1
35-39	Male	Discharged	1241
35-39	Male	On-going care	128
35-39	Male	Died	28
35-39	Female	Discharged	1342
35-39	Female	On-going care	160
35-39	Female	Died	17
35-39	Not specified	Discharged	2
35-39	NA	Discharged	2
40-44	Male	Discharged	1386
40-44	Male	On-going care	180
40-44	Male	Died	46
40-44	Female	Discharged	1057
40-44	Female	On-going care	142
40-44	Female	Died	29
40-44	Not specified	Discharged	5
40-44	NA	Discharged	2
40-44	NA	On-going care	1
45-49	Male	Discharged	1410
45-49	Male	On-going care	168
45-49	Male	Died	82

age.factor	sex	status	n
45-49	Female	Discharged	1000
45-49	Female	On-going care	96
45-49	Female	Died	47
45-49	Not specified	Discharged	1
45-49	Not specified	On-going care	1
50-54	Male	Discharged	1535
50-54	Male	On-going care	171
50-54	Male	Died	113
50-54	Female	Discharged	1177
50-54	Female	On-going care	126
50-54	Female	Died	55
50-54	Not specified	Discharged	1
50-54	NA	Discharged	2
55-59	Male	Discharged	1496
55-59	Male	On-going care	227
55-59	Male	Died	190
55-59	Female	Discharged	1156
55-59	Female	On-going care	145
55-59	Female	Died	90
55-59	Not specified	On-going care	1
55-59	Not specified	Died	1
55-59	NA	Discharged	2
60-64	Male	Discharged	1388
60-64	Male	On-going care	222
60-64	Male	Died	236
60-64	Female	Discharged	1005
60-64	Female	On-going care	165
60-64	Female	Died	131
60-64	Not specified	On-going care	3
60-64	NA	Died	1
65-69	Male	Discharged	1376
65-69	Male	On-going care	235

age.factor	sex	status	n
65-69	Male	Died	324
65-69	Female	Discharged	947
65-69	Female	On-going care	168
65-69	Female	Died	169
65-69	Not specified	Discharged	1
65-69	Not specified	On-going care	2
70-74	Male	Discharged	1629
70-74	Male	On-going care	313
70-74	Male	Died	385
70-74	Female	Discharged	1228
70-74	Female	On-going care	206
70-74	Female	Died	266
70-74	Not specified	Discharged	1
70-74	NA	Discharged	2
70-74	NA	On-going care	1
75-79	Male	Discharged	1548
75-79	Male	On-going care	299
75-79	Male	Died	498
75-79	Female	Discharged	1106
75-79	Female	On-going care	222
75-79	Female	Died	282
75-79	Not specified	Discharged	1
75-79	Not specified	On-going care	1
75-79	Not specified	Died	2
75-79	NA	Discharged	3
80-84	Male	Discharged	1209
80-84	Male	On-going care	264
80-84	Male	Died	525
80-84	Female	Discharged	1085
80-84	Female	On-going care	271
80-84	Female	Died	369
80-84	Not specified	Discharged	2

age.factor	sex	status	n
80-84	Not specified	On-going care	1
80-84	Not specified	Died	1
80-84	NA	Died	1
85-89	Male	Discharged	911
85-89	Male	On-going care	228
85-89	Male	Died	472
85-89	Female	Discharged	890
85-89	Female	On-going care	250
85-89	Female	Died	299
85-89	Not specified	Discharged	1
85-89	Not specified	Died	2
85-89	NA	Discharged	1
90+	Male	Discharged	505
90+	Male	On-going care	159
90+	Male	Died	351
90+	Female	Discharged	700
90+	Female	On-going care	176
90+	Female	Died	330
90+	Not specified	Discharged	1
90+	Not specified	Died	1
90+	NA	On-going care	1

Table for figure 2B

age.factor	sex	status	n
0-4	Male	Discharged	30
0-4	Male	On-going care	6
0-4	Female	Discharged	21
0-4	Female	On-going care	4
5-9	Male	Discharged	7
5-9	Male	On-going care	1
5-9	Female	Discharged	15
5-9	Female	On-going care	1

age.factor	sex	status	n
10-14	Male	Discharged	15
10-14	Male	On-going care	5
10-14	Female	Discharged	13
10-14	Female	On-going care	2
15-19	Male	Discharged	7
15-19	Male	On-going care	2
15-19	Female	Discharged	13
15-19	Female	On-going care	2
20-24	Male	Discharged	14
20-24	Male	On-going care	3
20-24	Female	Discharged	15
20-24	Female	On-going care	5
20-24	Female	Died	1
25-29	Male	Discharged	9
25-29	Male	On-going care	2
25-29	Female	Discharged	43
25-29	Female	On-going care	10
30-34	Male	Discharged	35
30-34	Male	On-going care	10
30-34	Female	Discharged	62
30-34	Female	On-going care	16
30-34	Female	Died	1
35-39	Male	Discharged	35
35-39	Male	On-going care	8
35-39	Male	Died	2
35-39	Female	Discharged	71
35-39	Female	On-going care	12
40-44	Male	Discharged	52
40-44	Male	On-going care	12
40-44	Male	Died	1
40-44	Female	Discharged	50
40-44	Female	On-going care	14

age.factor	sex	status	n
40-44	Female	Died	1
40-44	Not specified	Discharged	1
45-49	Male	Discharged	64
45-49	Male	On-going care	13
45-49	Male	Died	4
45-49	Female	Discharged	40
45-49	Female	On-going care	9
50-54	Male	Discharged	72
50-54	Male	On-going care	19
50-54	Female	Discharged	51
50-54	Female	On-going care	11
50-54	Female	Died	2
55-59	Male	Discharged	74
55-59	Male	On-going care	31
55-59	Male	Died	7
55-59	Female	Discharged	46
55-59	Female	On-going care	15
55-59	Female	Died	5
55-59	Not specified	On-going care	1
60-64	Male	Discharged	67
60-64	Male	On-going care	24
60-64	Male	Died	9
60-64	Female	Discharged	60
60-64	Female	On-going care	21
60-64	Female	Died	2
60-64	Not specified	On-going care	1
65-69	Male	Discharged	48
65-69	Male	On-going care	34
65-69	Male	Died	8
65-69	Female	Discharged	40
65-69	Female	On-going care	19
65-69	Female	Died	11

age.factor	sex	status	n
65-69	Not specified	On-going care	1
70-74	Male	Discharged	53
70-74	Male	On-going care	28
70-74	Male	Died	12
70-74	Female	Discharged	64
70-74	Female	On-going care	20
70-74	Female	Died	9
75-79	Male	Discharged	36
75-79	Male	On-going care	31
75-79	Male	Died	10
75-79	Female	Discharged	36
75-79	Female	On-going care	22
75-79	Female	Died	7
75-79	Not specified	On-going care	1
80-84	Male	Discharged	22
80-84	Male	On-going care	22
80-84	Male	Died	15
80-84	Female	Discharged	29
80-84	Female	On-going care	24
80-84	Female	Died	15
85-89	Male	Discharged	31
85-89	Male	On-going care	21
85-89	Male	Died	18
85-89	Female	Discharged	30
85-89	Female	On-going care	14
85-89	Female	Died	6
90+	Male	Discharged	12
90+	Male	On-going care	14
90+	Male	Died	13
90+	Female	Discharged	23
90+	Female	On-going care	13
90+	Female	Died	15

Table for figure 4A

day	status	n
-2	Discharged	1
-1	Discharged	1
1	Discharged	3388
1	Ward	28518
1	Ward (O2)	13604
1	HDU/ICU	864
1	HDU/ICU (O2)	316
1	HDU/ICU (noninvasive)	1209
1	ICU (ventilated)	335
1	Died	222
2	Discharged	8128
2	Ward	23302
2	Ward (O2)	12206
2	HDU/ICU	710
2	HDU/ICU (O2)	292
2	HDU/ICU (noninvasive)	1095
2	ICU (ventilated)	260
2	Died	368
3	Discharged	11318
3	Ward	20284
3	Ward (O2)	11227
3	HDU/ICU	666
3	HDU/ICU (O2)	313
3	HDU/ICU (noninvasive)	1117
3	ICU (ventilated)	260
3	Died	536
4	Discharged	14909
4	Ward	17543
4	Ward (O2)	10161
4	HDU/ICU	624
4	HDU/ICU (O2)	299

day	status	n
4	HDU/ICU (noninvasive)	1093
4	ICU (ventilated)	248
4	Died	798
5	Discharged	18096
5	Ward	15335
5	Ward (O2)	8971
5	HDU/ICU	590
5	HDU/ICU (O2)	282
5	HDU/ICU (noninvasive)	1060
5	ICU (ventilated)	243
5	Died	1073
6	Discharged	20929
6	Ward	13462
6	Ward (O2)	7820
6	HDU/ICU	545
6	HDU/ICU (O2)	265
6	HDU/ICU (noninvasive)	1021
6	ICU (ventilated)	231
6	Died	1359
7	Discharged	23381
7	Ward	11807
7	Ward (O2)	6825
7	HDU/ICU	502
7	HDU/ICU (O2)	239
7	HDU/ICU (noninvasive)	964
7	ICU (ventilated)	220
7	Died	1674
8	Discharged	25525
8	Ward	10448
8	Ward (O2)	5911
8	HDU/ICU	446
8	HDU/ICU (O2)	210

day	status	n
8	HDU/ICU (noninvasive)	879
8	ICU (ventilated)	217
8	Died	1953
9	Discharged	27249
9	Ward	9357
9	Ward (O2)	5149
9	HDU/ICU	407
9	HDU/ICU (O2)	184
9	HDU/ICU (noninvasive)	797
9	ICU (ventilated)	208
9	Died	2217
10	Discharged	28638
10	Ward	8459
10	Ward (O2)	4515
10	HDU/ICU	377
10	HDU/ICU (O2)	164
10	HDU/ICU (noninvasive)	727
10	ICU (ventilated)	202
10	Died	2469

Table for figure 4B

day	status	n
-2	Discharged	1
-1	Discharged	1
1	Discharged	127
1	Ward	1280
1	Ward (O2)	610
1	HDU/ICU	58
1	HDU/ICU (O2)	14
1	HDU/ICU (noninvasive)	57
1	ICU (ventilated)	13
1	Died	1

day	status	n
2	Discharged	345
2	Ward	841
2	Ward (O2)	458
2	HDU/ICU	33
2	HDU/ICU (O2)	9
2	HDU/ICU (noninvasive)	34
2	ICU (ventilated)	5
2	Died	13
3	Discharged	466
3	Ward	700
3	Ward (O2)	413
3	HDU/ICU	32
3	HDU/ICU (O2)	9
3	HDU/ICU (noninvasive)	33
3	ICU (ventilated)	4
3	Died	29
4	Discharged	624
4	Ward	583
4	Ward (O2)	362
4	HDU/ICU	31
4	HDU/ICU (O2)	8
4	HDU/ICU (noninvasive)	32
4	ICU (ventilated)	4
4	Died	38
5	Discharged	794
5	Ward	472
5	Ward (O2)	298
5	HDU/ICU	25
5	HDU/ICU (O2)	8
5	HDU/ICU (noninvasive)	30
5	ICU (ventilated)	3
5	Died	52

day	status	n
6	Discharged	916
6	Ward	400
6	Ward (O2)	243
6	HDU/ICU	22
6	HDU/ICU (O2)	8
6	HDU/ICU (noninvasive)	28
6	ICU (ventilated)	3
6	Died	62
7	Discharged	1036
7	Ward	332
7	Ward (O2)	186
7	HDU/ICU	19
7	HDU/ICU (O2)	7
7	HDU/ICU (noninvasive)	25
7	ICU (ventilated)	3
7	Died	72
8	Discharged	1130
8	Ward	275
8	Ward (O2)	151
8	HDU/ICU	15
8	HDU/ICU (O2)	6
8	HDU/ICU (noninvasive)	18
8	ICU (ventilated)	3
8	Died	82
9	Discharged	1228
9	Ward	215
9	Ward (O2)	109
9	HDU/ICU	12
9	HDU/ICU (O2)	5
9	HDU/ICU (noninvasive)	12
9	ICU (ventilated)	2
9	Died	97

day	status	n
10	Discharged	1287
10	Ward	173
10	Ward (O2)	84
10	HDU/ICU	11
10	HDU/ICU (O2)	5
10	HDU/ICU (noninvasive)	9
10	ICU (ventilated)	2
10	Died	108