



# Department for Levelling Up, Housing & Communities

## Planning applications in England:

Factsheet

July to September 2021

### Residential and commercial applications granted (major and minor):

Residential

**9,600** - 3% from 2020 Q3

Commercial

**2,000** + 19% from 2020 Q3

### Householder developments:

Decided

**68,100** + 37% from 2020 Q3

As a proportion of all applications decided

**61%** + 6 pp from 2020 Q3

### Permitted development rights (PDRs):

Number of applications:

Prior approval not required

**5,000** + 5% from 2020 Q3

Granted

**2,300** + 3% from 2020 Q3

Refused

**2,100** + 14% from 2020 Q3

### County matter applications

Decided

**152** - 8% from 2020 Q3

Granted

**140** - 2% from 2020 Q3

pp Percentage point

### Number of applications:

Received

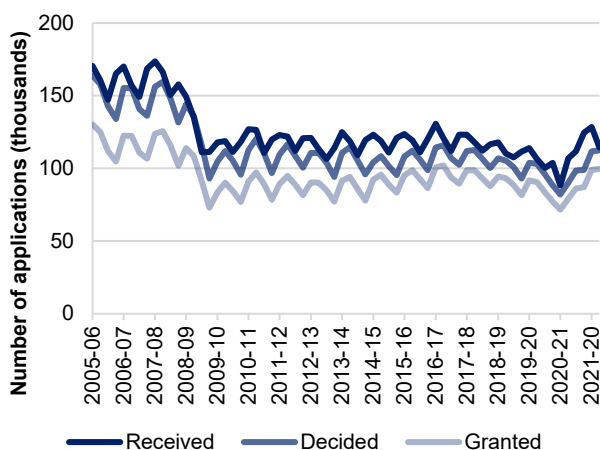
**114,400** + 7% from 2020 Q3

Decided

**112,300** + 25% from 2020 Q3

Granted

**99,700** + 26% from 2020 Q3



### Percentage of applications:

Granted

**89%** + 1 pp from 2020 Q3

### The percentage of applications decided in time by development type:

Major applications

**85%** - 3 pp from 2020 Q3

Minor applications

**80%** - 4 pp from 2020 Q3

Other applications

**84%** - 5 pp from 2020 Q3