

Dynamic CO-CIN report to SAGE and NERVTAG

Executive summary

Includes patients admitted on or after 01 May 2021

There are 45561 patients included in CO-CIN. Of these, 4876 patient(s) have died and 7089 required ICU. 34185 have been discharged home.

Admission

Figure 1

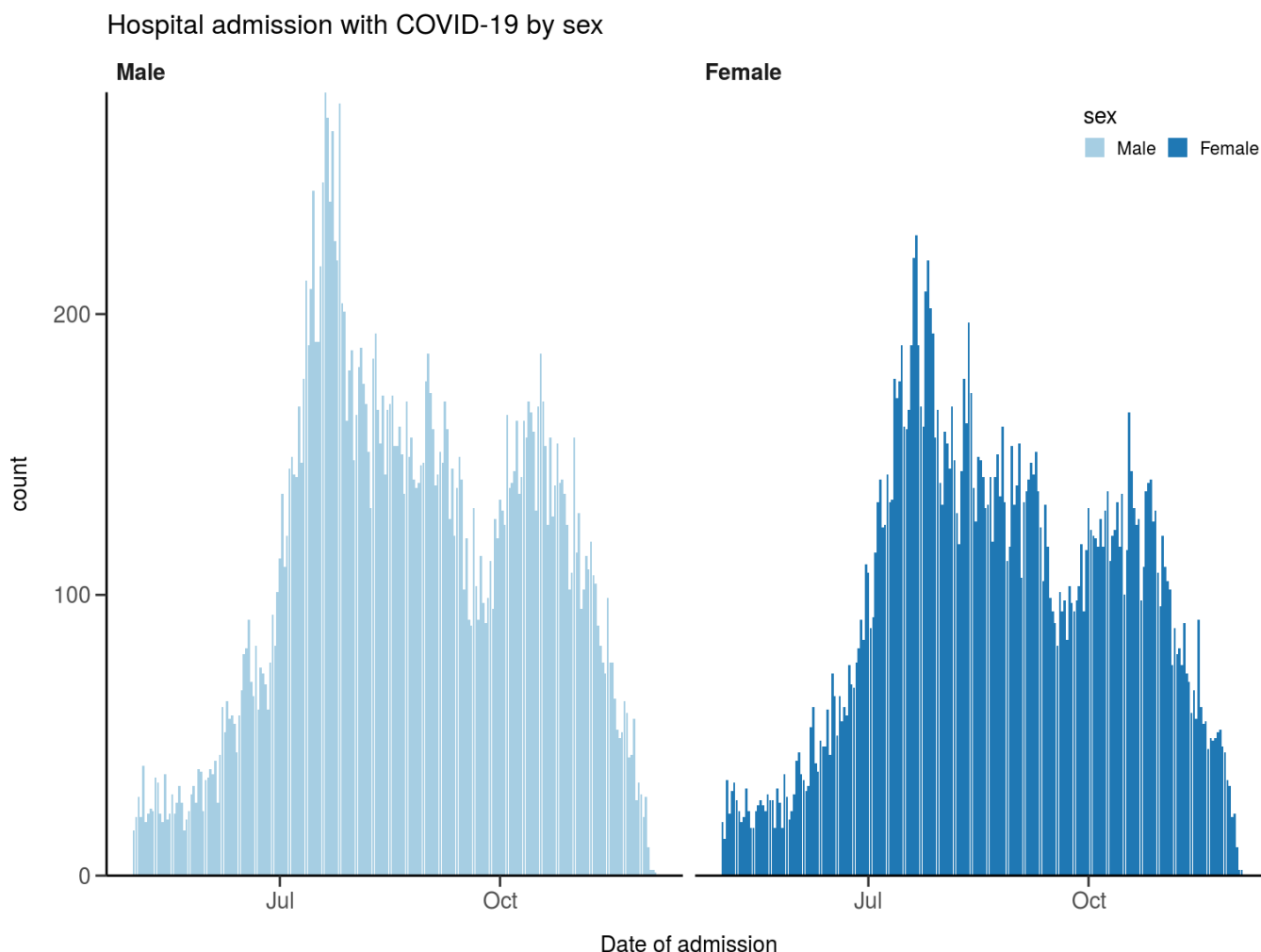
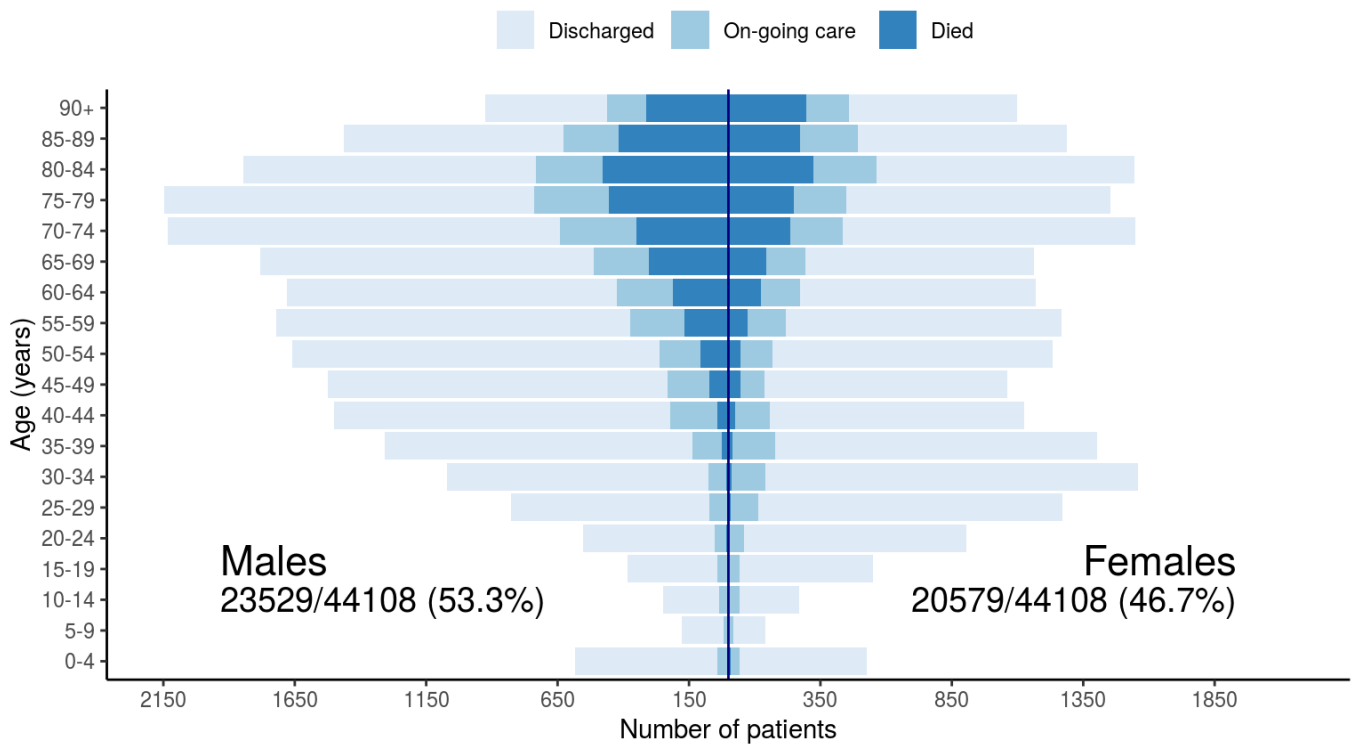


Figure 2

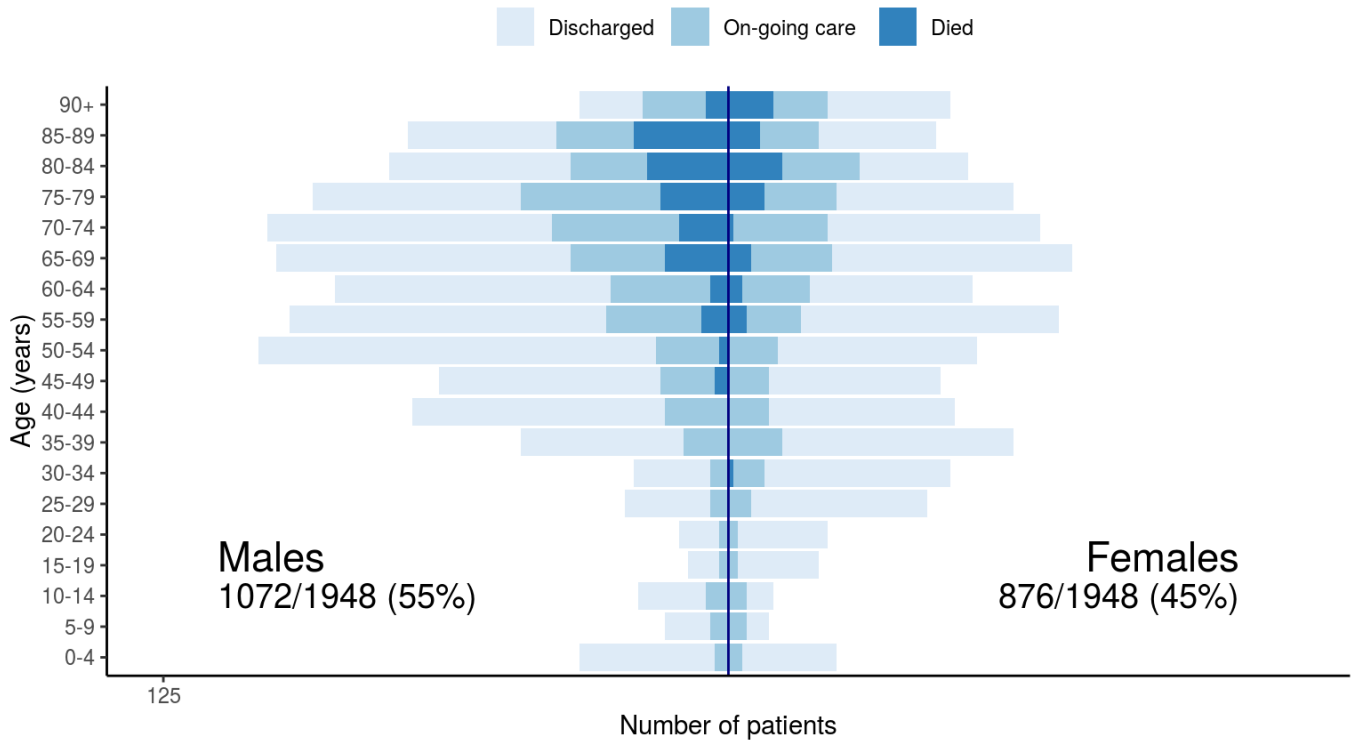
Patients with outcome stratified by age, and sex

All



Patients with outcome stratified by age, and sex

Admitted ≥ 14 days and ≤ 28 days ago

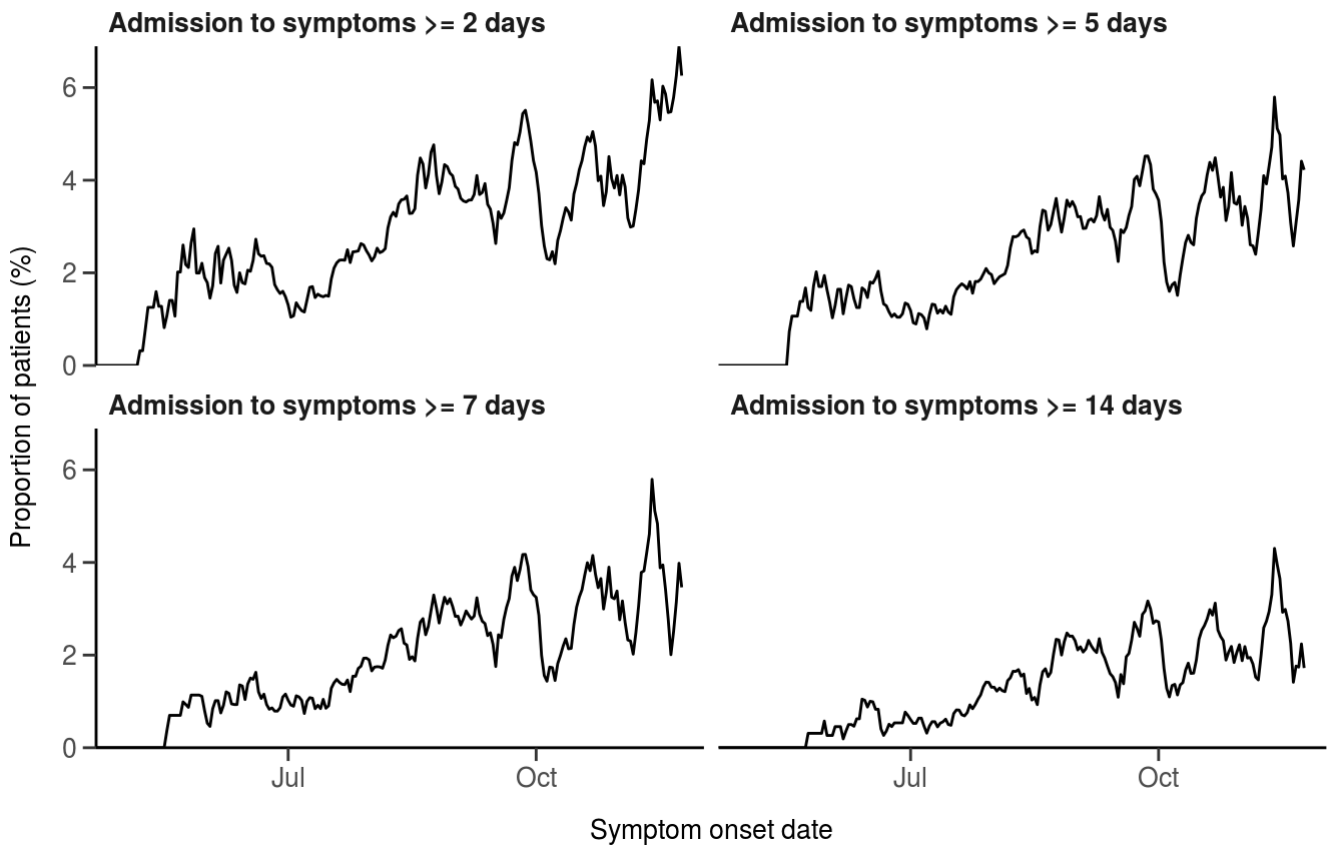


Nosocomial

Figure 3

Proportion with symptom onset occurring after hospital admission

7-day rolling percentage. n = 36011



Patient flow

Figure 4A - All patients

N = 44394

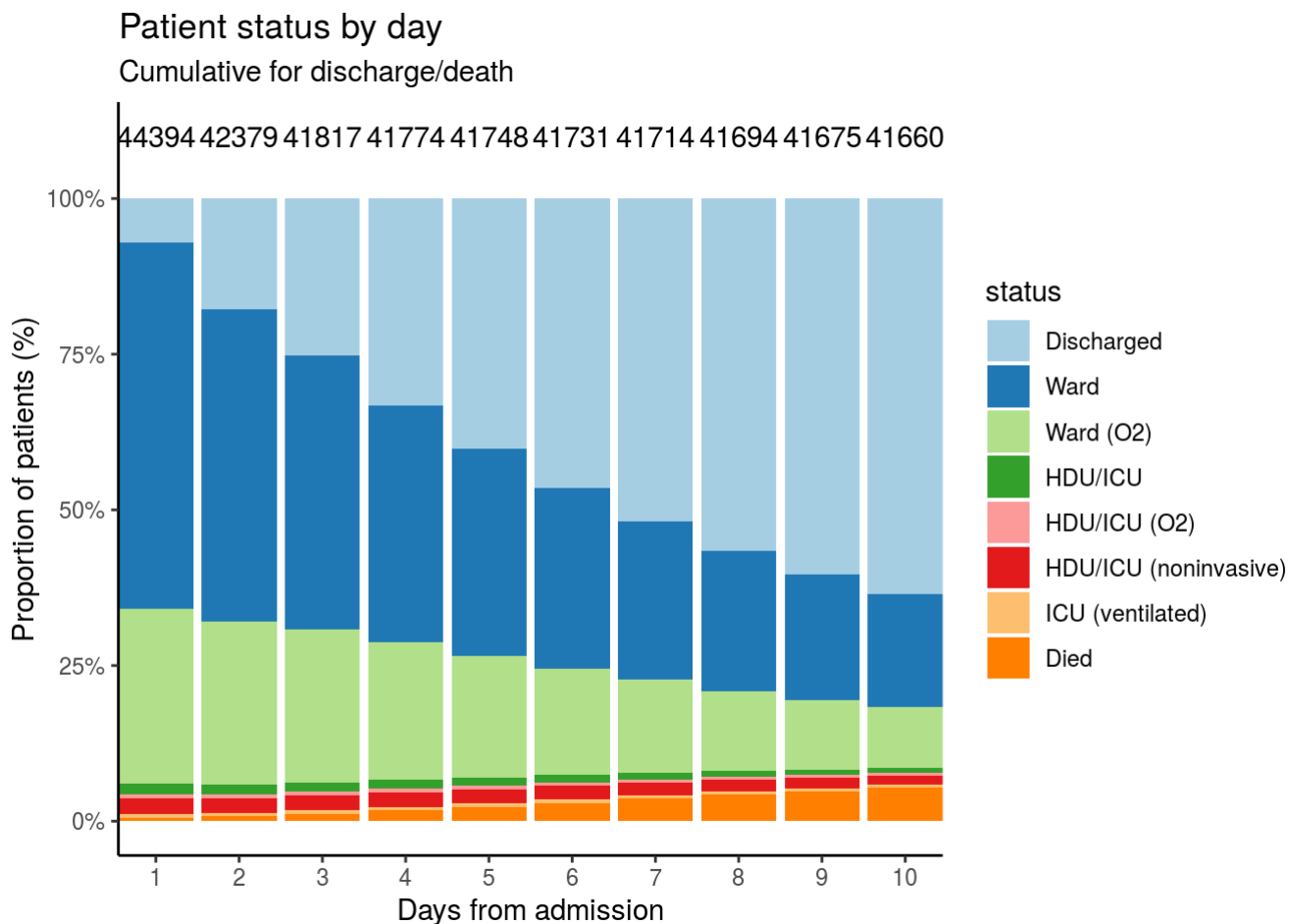
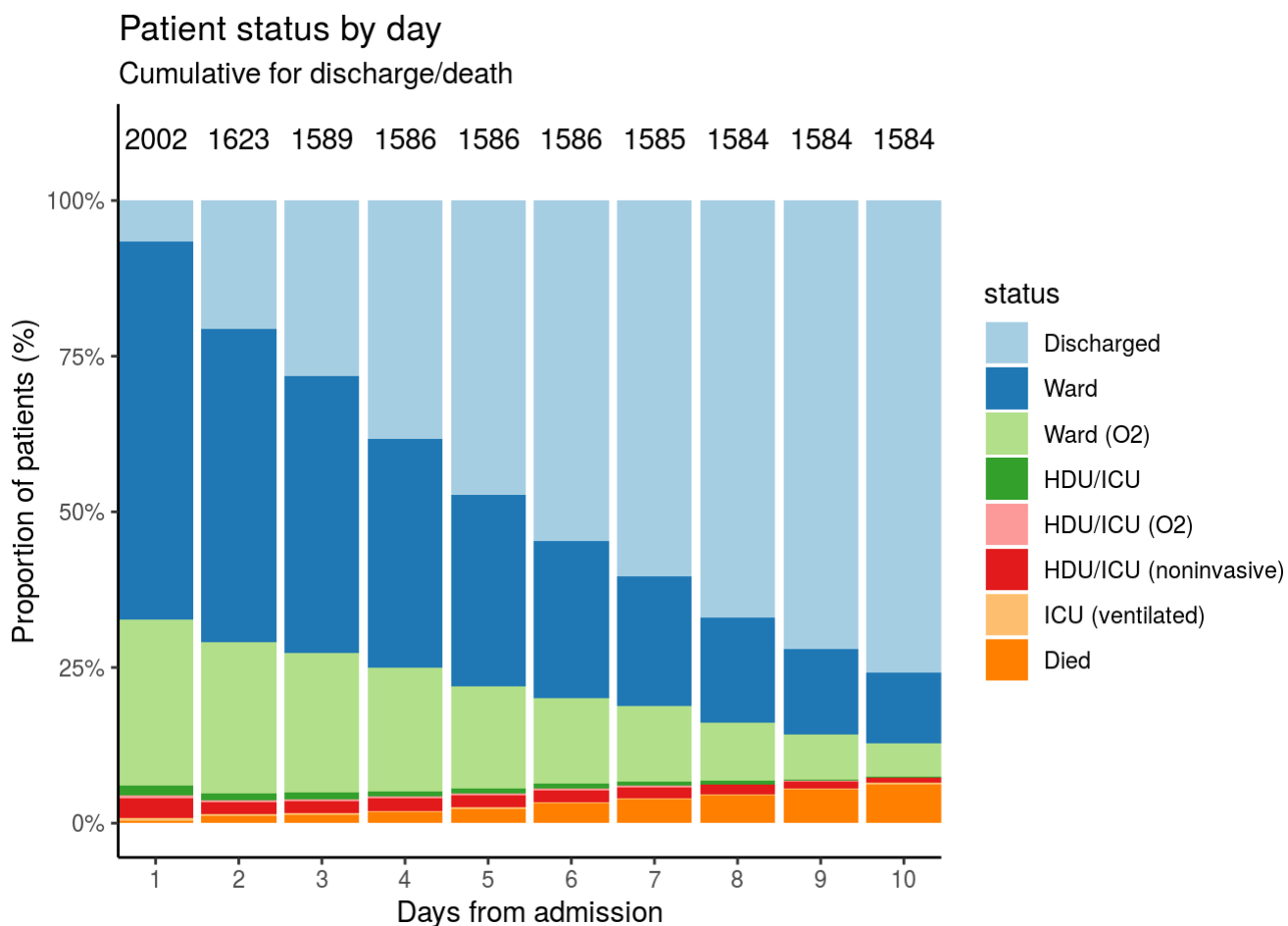


Figure 4B - Patients admitted ≥ 14 days and ≤ 28 days ago

N = 2002



Oxygen requirement

Figure 5A - All patients

N = 42563

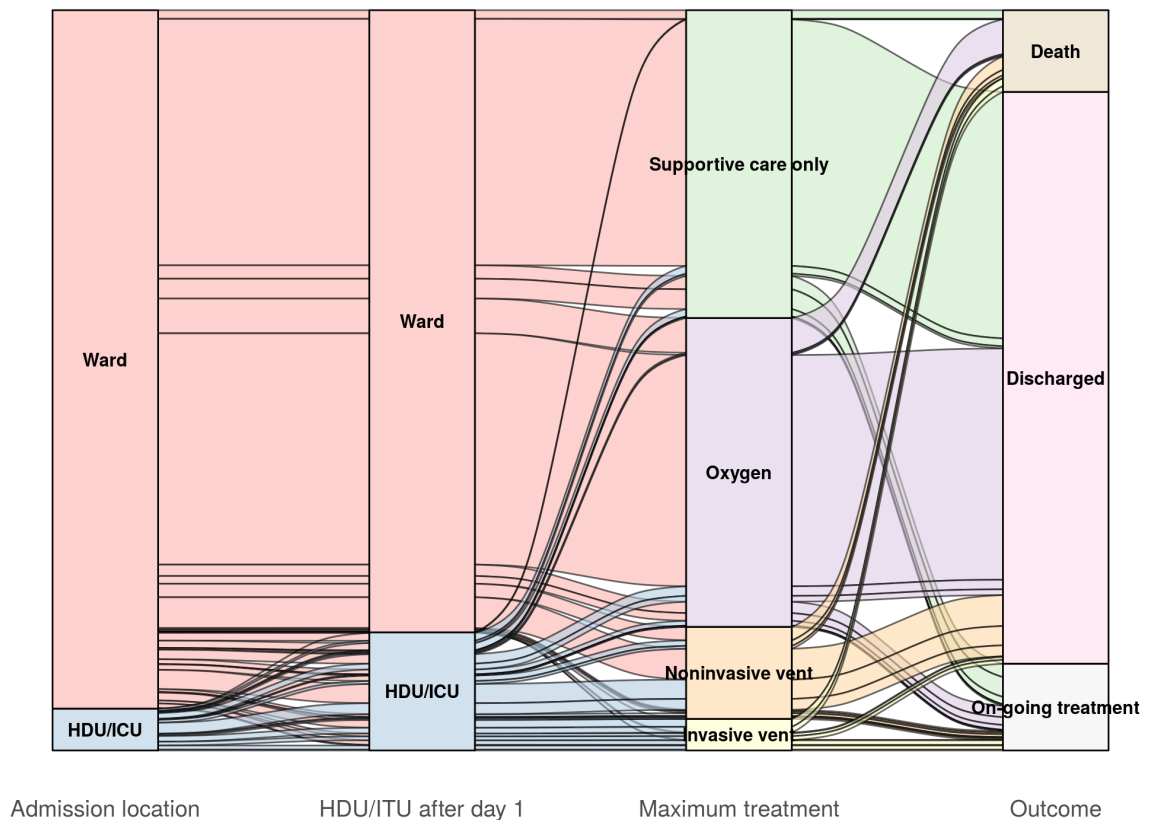


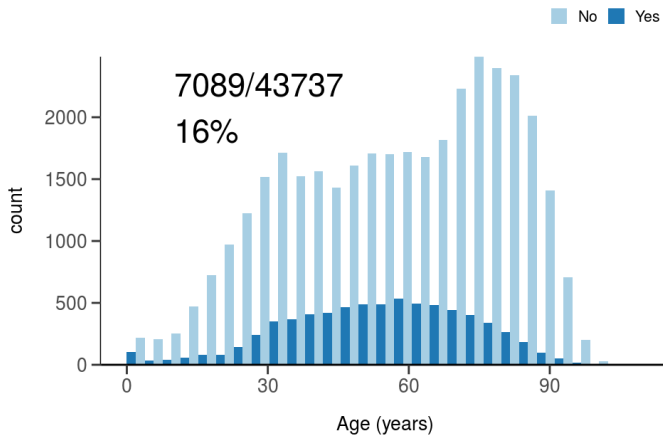
Figure 5B - Patients admitted ≥ 14 days and ≤ 28 days ago

N = 1958

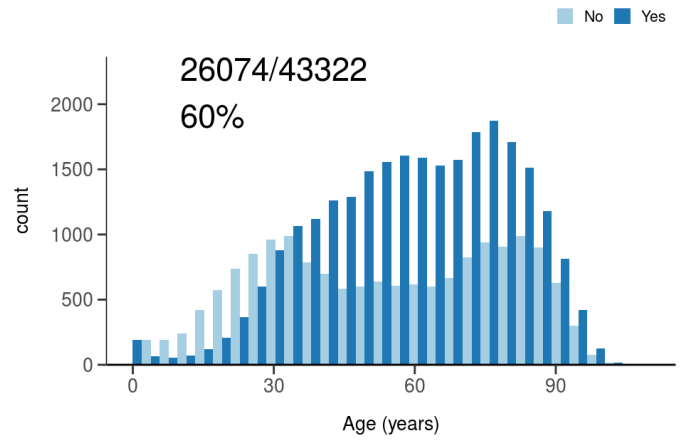
Treatment

Figure 6

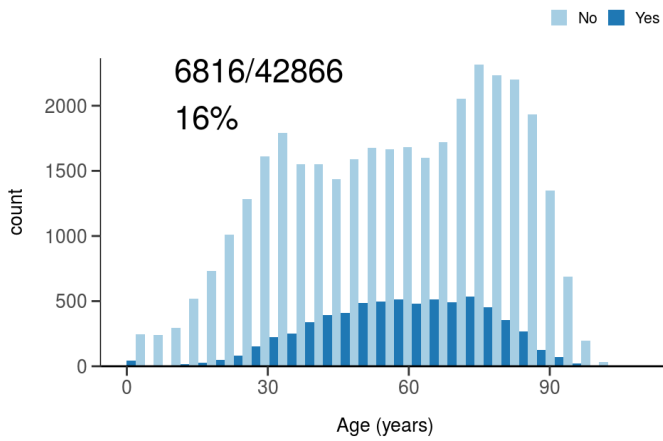
ICU/HDU admission
Figure 10A



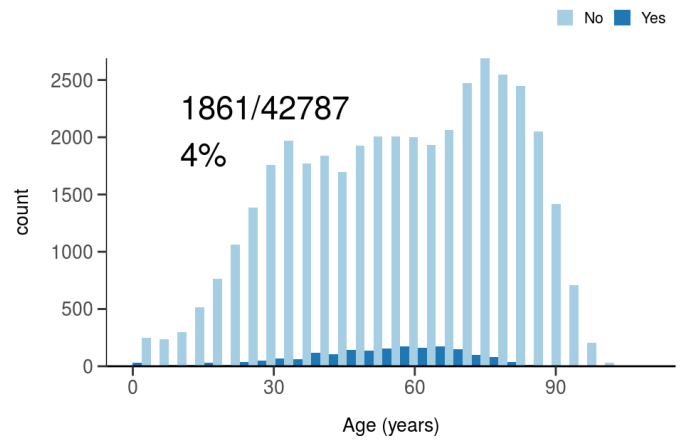
High flow oxygen
Figure 10B



Noninvasive ventilation
Figure 10C



Invasive ventilation
Figure 10D



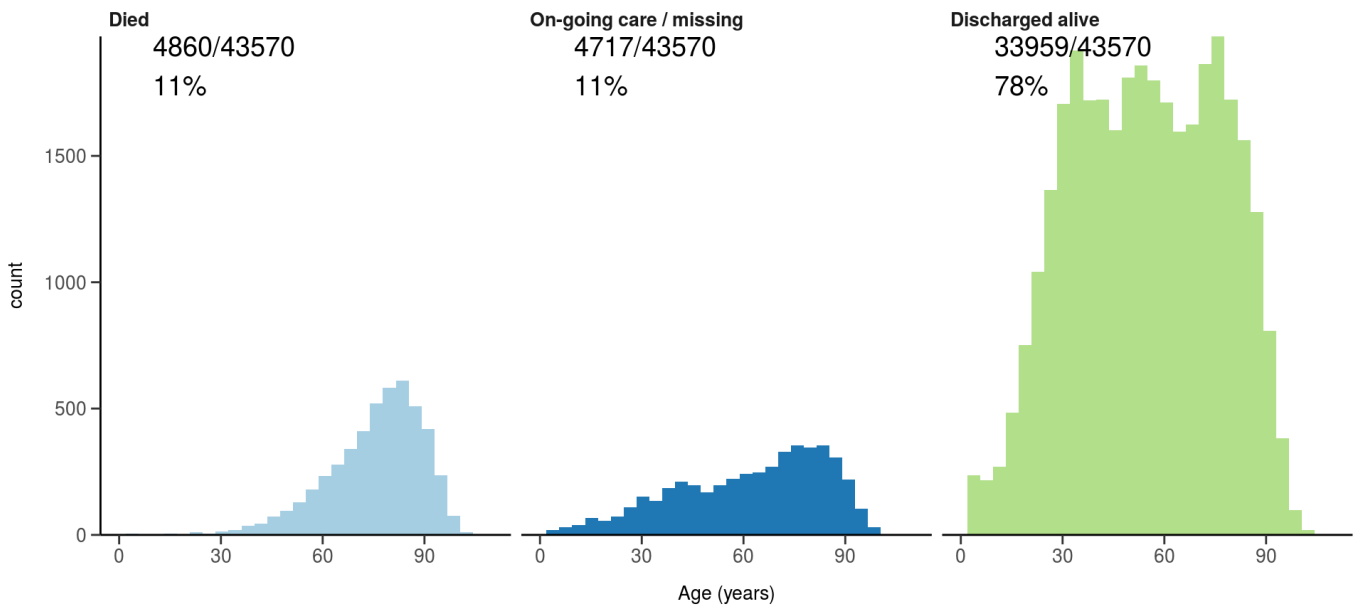
Status in patients admitted ≥ 14 days from today

Figure 7

Where outcome is not reported, on-going care is assumed.

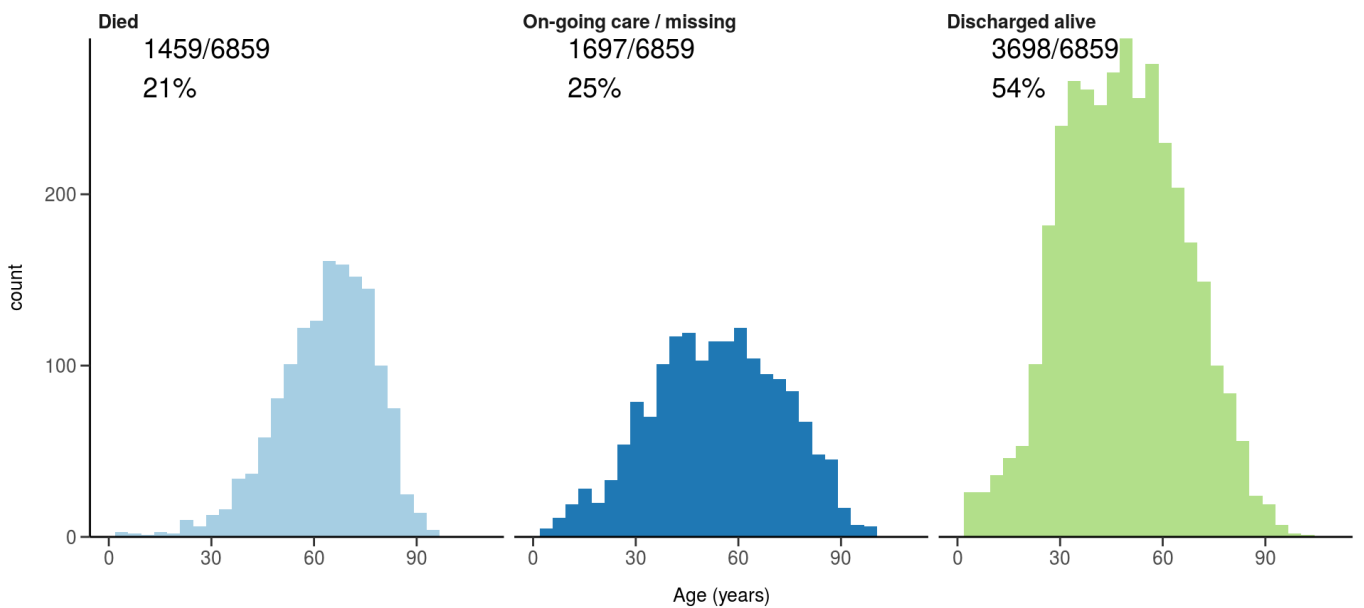
All: status in patients admitted ≥ 14 days ago

Figure 11A



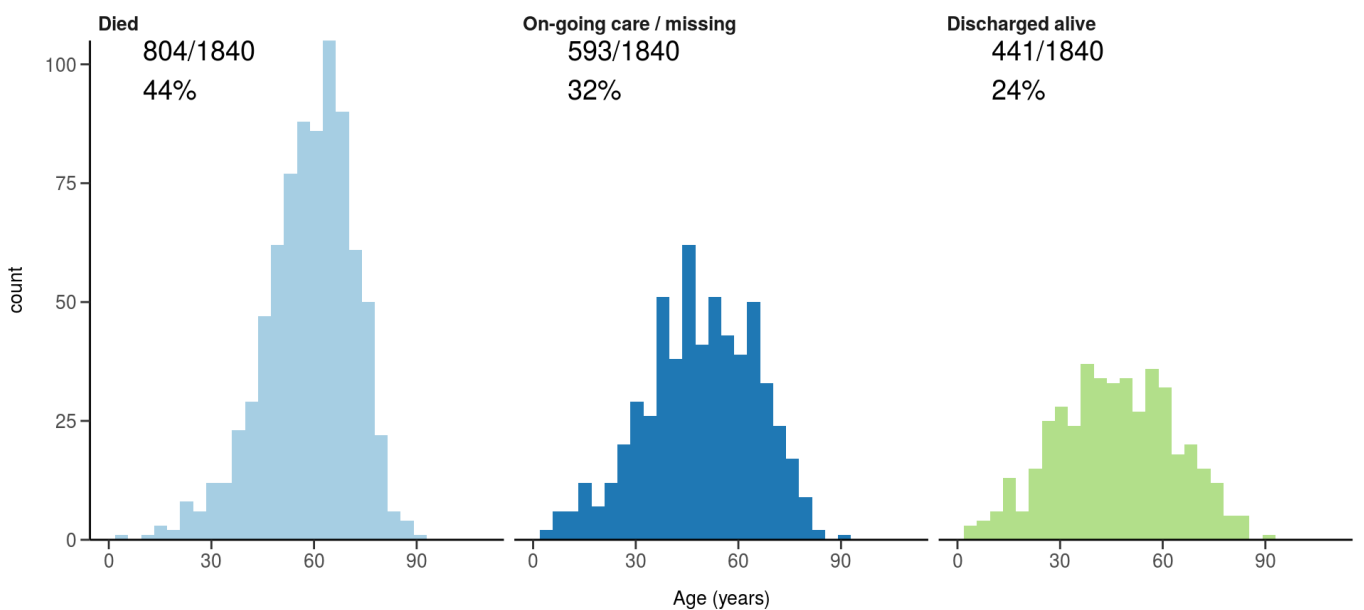
ICU/HDU admissions: status in patients admitted ≥ 14 days ago

Figure 11B



Invasive ventilation: status in patients admitted ≥ 14 days ago

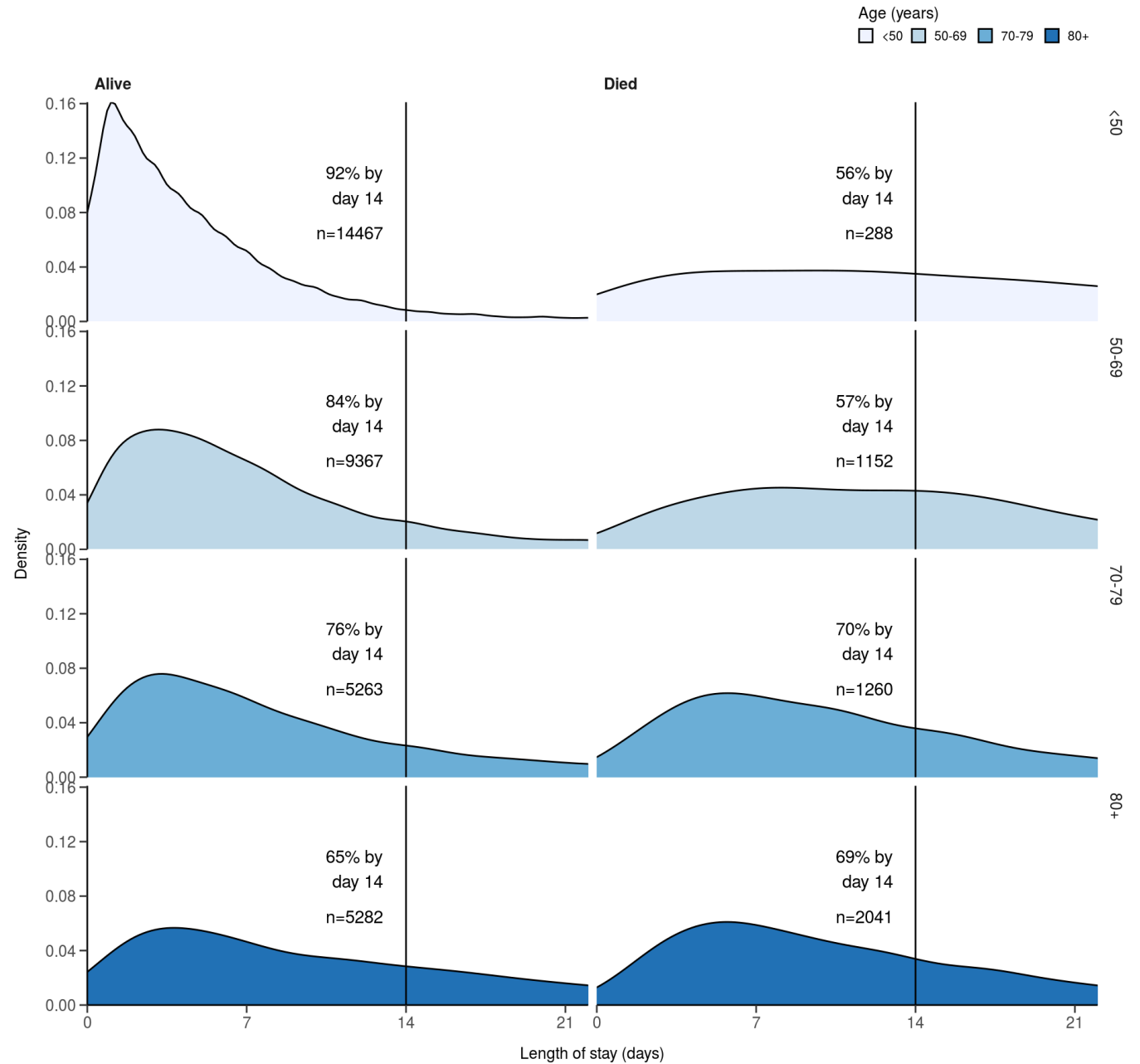
Figure 11c



Length of stay stratified by age

####Figure 8

Length of stay stratified by age and mortality
Proportion who reach outcome by day 14 shown



Data

Table for figure 2A

age.factor	sex	status	n
0-4	Male	Discharged	542
0-4	Male	On-going care	36
0-4	Male	Died	5
0-4	Female	Discharged	483

age.factor	sex	status	n
0-4	Female	On-going care	34
0-4	Female	Died	9
5-9	Male	Discharged	160
5-9	Male	On-going care	17
5-9	Female	Discharged	119
5-9	Female	On-going care	18
5-9	Female	Died	2
10-14	Male	Discharged	215
10-14	Male	On-going care	34
10-14	Female	Discharged	228
10-14	Female	On-going care	38
10-14	Female	Died	3
15-19	Male	Discharged	340
15-19	Male	On-going care	42
15-19	Male	Died	1
15-19	Female	Discharged	509
15-19	Female	On-going care	39
15-19	Female	Died	3
15-19	Not specified	On-going care	1
20-24	Male	Discharged	501
20-24	Male	On-going care	45
20-24	Male	Died	8
20-24	Female	Discharged	847
20-24	Female	On-going care	55
20-24	Female	Died	3
20-24	Not specified	On-going care	1
20-24	Not specified	Died	1
25-29	Male	Discharged	754
25-29	Male	On-going care	68
25-29	Male	Died	5
25-29	Female	Discharged	1158
25-29	Female	On-going care	107

age.factor	sex	status	n
25-29	Female	Died	7
25-29	Not specified	Discharged	2
25-29	NA	Discharged	1
30-34	Male	Discharged	996
30-34	Male	On-going care	66
30-34	Male	Died	9
30-34	Female	Discharged	1420
30-34	Female	On-going care	127
30-34	Female	Died	13
30-34	Not specified	Discharged	3
30-34	NA	Died	1
35-39	Male	Discharged	1170
35-39	Male	On-going care	114
35-39	Male	Died	24
35-39	Female	Discharged	1226
35-39	Female	On-going care	161
35-39	Female	Died	17
35-39	Not specified	Discharged	2
35-39	NA	Discharged	2
40-44	Male	Discharged	1279
40-44	Male	On-going care	178
40-44	Male	Died	42
40-44	Female	Discharged	967
40-44	Female	On-going care	131
40-44	Female	Died	26
40-44	Not specified	Discharged	5
40-44	NA	Discharged	2
40-44	NA	On-going care	1
45-49	Male	Discharged	1293
45-49	Male	On-going care	157
45-49	Male	Died	74
45-49	Female	Discharged	924

age.factor	sex	status	n
45-49	Female	On-going care	92
45-49	Female	Died	46
45-49	Not specified	Discharged	1
45-49	Not specified	On-going care	1
50-54	Male	Discharged	1399
50-54	Male	On-going care	154
50-54	Male	Died	107
50-54	Female	Discharged	1067
50-54	Female	On-going care	121
50-54	Female	Died	47
50-54	Not specified	Discharged	1
50-54	NA	Discharged	2
55-59	Male	Discharged	1346
55-59	Male	On-going care	206
55-59	Male	Died	168
55-59	Female	Discharged	1052
55-59	Female	On-going care	143
55-59	Female	Died	74
55-59	Not specified	Died	1
55-59	NA	Discharged	2
60-64	Male	Discharged	1257
60-64	Male	On-going care	211
60-64	Male	Died	212
60-64	Female	Discharged	898
60-64	Female	On-going care	149
60-64	Female	Died	122
60-64	Not specified	On-going care	2
60-64	NA	Died	1
65-69	Male	Discharged	1271
65-69	Male	On-going care	210
65-69	Male	Died	302
65-69	Female	Discharged	870

age.factor	sex	status	n
65-69	Female	On-going care	148
65-69	Female	Died	144
65-69	Not specified	Discharged	1
65-69	Not specified	On-going care	1
70-74	Male	Discharged	1491
70-74	Male	On-going care	292
70-74	Male	Died	349
70-74	Female	Discharged	1115
70-74	Female	On-going care	199
70-74	Female	Died	235
70-74	Not specified	Discharged	1
70-74	NA	Discharged	2
75-79	Male	Discharged	1406
75-79	Male	On-going care	285
75-79	Male	Died	455
75-79	Female	Discharged	1006
75-79	Female	On-going care	197
75-79	Female	Died	250
75-79	Not specified	Discharged	1
75-79	Not specified	Died	2
75-79	NA	Discharged	2
80-84	Male	Discharged	1114
80-84	Male	On-going care	253
80-84	Male	Died	478
80-84	Female	Discharged	984
80-84	Female	On-going care	240
80-84	Female	Died	322
80-84	Not specified	Discharged	2
80-84	Not specified	Died	1
80-84	NA	Discharged	1
80-84	NA	Died	1
85-89	Male	Discharged	834

age.factor	sex	status	n
85-89	Male	On-going care	209
85-89	Male	Died	419
85-89	Female	Discharged	795
85-89	Female	On-going care	219
85-89	Female	Died	272
85-89	Not specified	Discharged	1
85-89	NA	Discharged	1
90+	Male	Discharged	463
90+	Male	On-going care	150
90+	Male	Died	313
90+	Female	Discharged	638
90+	Female	On-going care	164
90+	Female	Died	296
90+	Not specified	Discharged	1
90+	Not specified	Died	1
90+	NA	On-going care	1

Table for figure 2B

age.factor	sex	status	n
0-4	Male	Discharged	30
0-4	Male	On-going care	3
0-4	Female	Discharged	21
0-4	Female	On-going care	3
5-9	Male	Discharged	10
5-9	Male	On-going care	4
5-9	Female	Discharged	5
5-9	Female	On-going care	4
10-14	Male	Discharged	15
10-14	Male	On-going care	5
10-14	Female	Discharged	6
10-14	Female	On-going care	4
15-19	Male	Discharged	7

age.factor	sex	status	n
15-19	Male	On-going care	2
15-19	Female	Discharged	18
15-19	Female	On-going care	2
20-24	Male	Discharged	9
20-24	Male	On-going care	2
20-24	Female	Discharged	20
20-24	Female	On-going care	2
25-29	Male	Discharged	19
25-29	Male	On-going care	4
25-29	Female	Discharged	39
25-29	Female	On-going care	5
30-34	Male	Discharged	17
30-34	Male	On-going care	4
30-34	Female	Discharged	41
30-34	Female	On-going care	7
30-34	Female	Died	1
35-39	Male	Discharged	36
35-39	Male	On-going care	10
35-39	Female	Discharged	51
35-39	Female	On-going care	12
40-44	Male	Discharged	56
40-44	Male	On-going care	14
40-44	Female	Discharged	41
40-44	Female	On-going care	9
45-49	Male	Discharged	49
45-49	Male	On-going care	12
45-49	Male	Died	3
45-49	Female	Discharged	38
45-49	Female	On-going care	9
50-54	Male	Discharged	88
50-54	Male	On-going care	14
50-54	Male	Died	2

age.factor	sex	status	n
50-54	Female	Discharged	44
50-54	Female	On-going care	11
55-59	Male	Discharged	70
55-59	Male	On-going care	21
55-59	Male	Died	6
55-59	Female	Discharged	57
55-59	Female	On-going care	12
55-59	Female	Died	4
60-64	Male	Discharged	61
60-64	Male	On-going care	22
60-64	Male	Died	4
60-64	Female	Discharged	36
60-64	Female	On-going care	15
60-64	Female	Died	3
65-69	Male	Discharged	65
65-69	Male	On-going care	21
65-69	Male	Died	14
65-69	Female	Discharged	53
65-69	Female	On-going care	18
65-69	Female	Died	5
70-74	Male	Discharged	63
70-74	Male	On-going care	28
70-74	Male	Died	11
70-74	Female	Discharged	47
70-74	Female	On-going care	21
70-74	Female	Died	1
75-79	Male	Discharged	46
75-79	Male	On-going care	31
75-79	Male	Died	15
75-79	Female	Discharged	39
75-79	Female	On-going care	16
75-79	Female	Died	8

age.factor	sex	status	n
80-84	Male	Discharged	40
80-84	Male	On-going care	17
80-84	Male	Died	18
80-84	Female	Discharged	24
80-84	Female	On-going care	17
80-84	Female	Died	12
85-89	Male	Discharged	33
85-89	Male	On-going care	17
85-89	Male	Died	21
85-89	Female	Discharged	26
85-89	Female	On-going care	13
85-89	Female	Died	7
90+	Male	Discharged	14
90+	Male	On-going care	14
90+	Male	Died	5
90+	Female	Discharged	27
90+	Female	On-going care	12
90+	Female	Died	10

Table for figure 4A

day	status	n
-3	Ward (O2)	1
-1	Discharged	1
1	Discharged	3155
1	Ward	26112
1	Ward (O2)	12443
1	HDU/ICU	776
1	HDU/ICU (O2)	295
1	HDU/ICU (noninvasive)	1090
1	ICU (ventilated)	301
1	Died	222
2	Discharged	7570

day	status	n
2	Ward	21198
2	Ward (O2)	11142
2	HDU/ICU	635
2	HDU/ICU (O2)	272
2	HDU/ICU (noninvasive)	978
2	ICU (ventilated)	237
2	Died	347
3	Discharged	10570
3	Ward	18398
3	Ward (O2)	10233
3	HDU/ICU	595
3	HDU/ICU (O2)	291
3	HDU/ICU (noninvasive)	1001
3	ICU (ventilated)	239
3	Died	490
4	Discharged	13883
4	Ward	15870
4	Ward (O2)	9252
4	HDU/ICU	551
4	HDU/ICU (O2)	279
4	HDU/ICU (noninvasive)	982
4	ICU (ventilated)	229
4	Died	728
5	Discharged	16800
5	Ward	13841
5	Ward (O2)	8170
5	HDU/ICU	523
5	HDU/ICU (O2)	264
5	HDU/ICU (noninvasive)	953
5	ICU (ventilated)	225
5	Died	972
6	Discharged	19404

day	status	n
6	Ward	12119
6	Ward (O2)	7112
6	HDU/ICU	482
6	HDU/ICU (O2)	247
6	HDU/ICU (noninvasive)	917
6	ICU (ventilated)	214
6	Died	1236
7	Discharged	21652
7	Ward	10597
7	Ward (O2)	6210
7	HDU/ICU	443
7	HDU/ICU (O2)	222
7	HDU/ICU (noninvasive)	866
7	ICU (ventilated)	203
7	Died	1521
8	Discharged	23617
8	Ward	9359
8	Ward (O2)	5369
8	HDU/ICU	394
8	HDU/ICU (O2)	194
8	HDU/ICU (noninvasive)	791
8	ICU (ventilated)	200
8	Died	1770
9	Discharged	25176
9	Ward	8371
9	Ward (O2)	4682
9	HDU/ICU	359
9	HDU/ICU (O2)	169
9	HDU/ICU (noninvasive)	717
9	ICU (ventilated)	192
9	Died	2009
10	Discharged	26447

day	status	n
10	Ward	7553
10	Ward (O2)	4101
10	HDU/ICU	335
10	HDU/ICU (O2)	149
10	HDU/ICU (noninvasive)	652
10	ICU (ventilated)	186
10	Died	2237

Table for figure 4B

day	status	n
1	Discharged	133
1	Ward	1213
1	Ward (O2)	534
1	HDU/ICU	33
1	HDU/ICU (O2)	10
1	HDU/ICU (noninvasive)	62
1	ICU (ventilated)	10
1	Died	7
2	Discharged	335
2	Ward	816
2	Ward (O2)	394
2	HDU/ICU	18
2	HDU/ICU (O2)	5
2	HDU/ICU (noninvasive)	31
2	ICU (ventilated)	6
2	Died	18
3	Discharged	447
3	Ward	707
3	Ward (O2)	356
3	HDU/ICU	17
3	HDU/ICU (O2)	5
3	HDU/ICU (noninvasive)	32

day	status	n
3	ICU (ventilated)	3
3	Died	22
4	Discharged	608
4	Ward	582
4	Ward (O2)	314
4	HDU/ICU	14
4	HDU/ICU (O2)	5
4	HDU/ICU (noninvasive)	32
4	ICU (ventilated)	3
4	Died	28
5	Discharged	749
5	Ward	489
5	Ward (O2)	260
5	HDU/ICU	13
5	HDU/ICU (O2)	4
5	HDU/ICU (noninvasive)	31
5	ICU (ventilated)	3
5	Died	37
6	Discharged	868
6	Ward	400
6	Ward (O2)	217
6	HDU/ICU	13
6	HDU/ICU (O2)	4
6	HDU/ICU (noninvasive)	31
6	ICU (ventilated)	3
6	Died	50
7	Discharged	957
7	Ward	331
7	Ward (O2)	191
7	HDU/ICU	11
7	HDU/ICU (O2)	3
7	HDU/ICU (noninvasive)	28

day	status	n
7	ICU (ventilated)	3
7	Died	61
8	Discharged	1060
8	Ward	268
8	Ward (O2)	148
8	HDU/ICU	9
8	HDU/ICU (O2)	2
8	HDU/ICU (noninvasive)	24
8	ICU (ventilated)	3
8	Died	70
9	Discharged	1142
9	Ward	217
9	Ward (O2)	114
9	HDU/ICU	4
9	HDU/ICU (O2)	1
9	HDU/ICU (noninvasive)	19
9	ICU (ventilated)	2
9	Died	85
10	Discharged	1201
10	Ward	179
10	Ward (O2)	85
10	HDU/ICU	3
10	HDU/ICU (O2)	1
10	HDU/ICU (noninvasive)	13
10	ICU (ventilated)	3
10	Died	99