



UK Health
Security
Agency

Emergency Department Syndromic Surveillance System Bulletin (England) 2021 Week 48

Key messages

Data reported to: 05 November 2021

During week 48, ED attendances for respiratory indicators decreased or remained stable. Attendances for 'impact of cold' returned to expected levels after increases noted in line with level 3 cold weather alerts, particularly noted in adults and North England.

Syndromic indicators at a glance

Table 1: The current trend (based on previous weeks, not only the current week) and the level (compared to the expected baseline), of each indicator included in this bulletin.

Indicator	Trend ¹	Level
Total attendances (Figure 1)	No trend	No baseline
COVID-19-like (Figure 2)	No trend	No baseline
Acute respiratory infections (Figure 3)	No trend	Above baseline
Acute bronchiolitis or bronchitis (Figure 4)	Decreasing	Below baseline
Influenza-like illness (Figure 5)	No trend	Below baseline
Pneumonia (Figure 6)	No trend	Below baseline
Asthma (Figure 7)	Decreasing	Below baseline
Gastroenteritis (Figure 8)	Decreasing	Above baseline
Cardiac (Figure 9)	No trend	Below baseline
Myocardial ischaemia (Figure 10)	No trend	Below baseline
Acute alcohol intoxication (Figure 11)	Decreasing	Below baseline
Mental health (Figure 12)	No trend	No baseline
Impact of cold (Figure 13)	Increasing	No baseline

¹ trend reports on the trend seen over most recent and earlier weeks

Contents

Key messages	2
Syndromic indicators at a glance	2
Contents	3
About this syndromic surveillance system	4
Total attendances.....	5
Respiratory conditions	7
COVID-19-like	7
Acute respiratory infections	9
Acute bronchiolitis/ bronchitis	11
Influenza-like illness	13
Pneumonia.....	15
Asthma.....	17
Gastrointestinal conditions	19
Gastroenteritis	19
Cardiac conditions.....	21
Cardiac.....	21
Myocardial ischaemia.....	23
Other conditions	25
Acute alcohol intoxication	25
Mental health	27
Seasonal environmental conditions	29
Notes and caveats	31
Acknowledgements	32
About the UK Health Security Agency	33

About this syndromic surveillance system

This bulletin presents data from the UK Health Security Agency (UKHSA) emergency department syndromic surveillance system.

Syndromic surveillance can be used to:

- assess current trends
- assess current trends and levels compared to historical baselines
- compare trends between age groups/areas

Syndromic surveillance should not be used to:

- estimate total burden or number of 'cases' of a condition (see **Notes and caveats**)
- compare levels between age groups/areas

Fully anonymised, daily ED data are analysed and reported here, to identify and describe trends for a variety of syndromic indicators:

- syndromic indicators include groupings such as acute respiratory tract infections, gastroenteritis and myocardial ischaemia
- syndromic indicators are based on:
 - the primary diagnosis for each attendance
 - other diagnoses may be recorded, but are not used for indicator grouping
 - diagnoses may be based on signs/symptoms and may not be laboratory confirmed
- **Key messages** describes any notable trends nationally (England), by age group and/or by geographical area (based on UKHSA Regions)
- the full list of syndromic indicators reported here, along with their current level and trend, are summarised in **Table 1**
- charts are provided for each syndromic indicator, on a national basis, by age group and by geographical area (UKHSA Region). Each chart includes a year of data with:
 - 7-day moving averages (adjusted for weekends and bank holidays) to aid in the identification of trend
 - statistical baselines (where available) to aid in the assessment of level compared to historical expectations

For further information please see the **Notes and caveats** section.

Previous weekly bulletins from this system are available [here](#).

Data quality issues of note this week

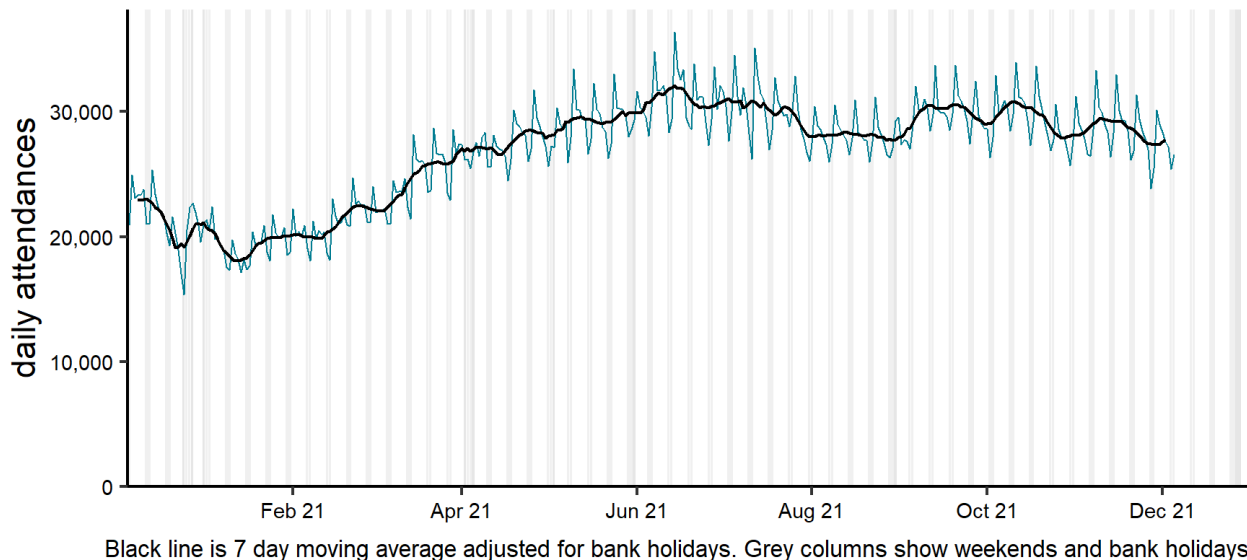
No issues identified.

See **Table 2** and **Table 3** for the numbers of EDs included this week.

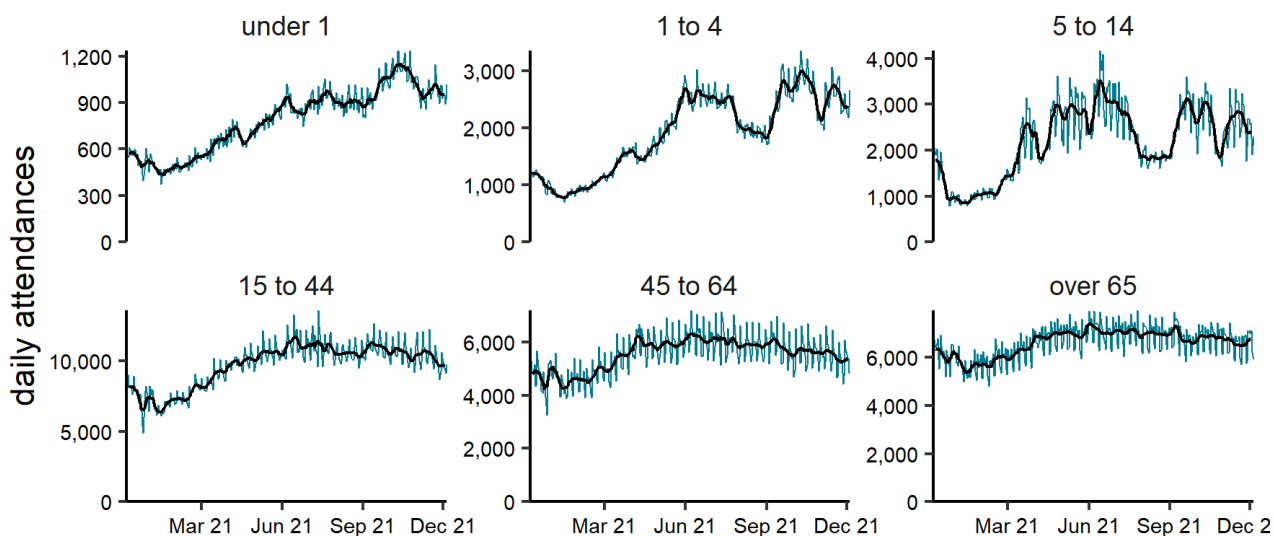
Total attendances

Figure 1: Daily number of ED attendances (and 7-day moving average adjusted for bank holidays) recorded in this sentinel syndromic surveillance system in England (a) nationally, (b) by age and (c) by UKHSA Region.

(a) Total attendances 06/12/2020 - 05/12/2021

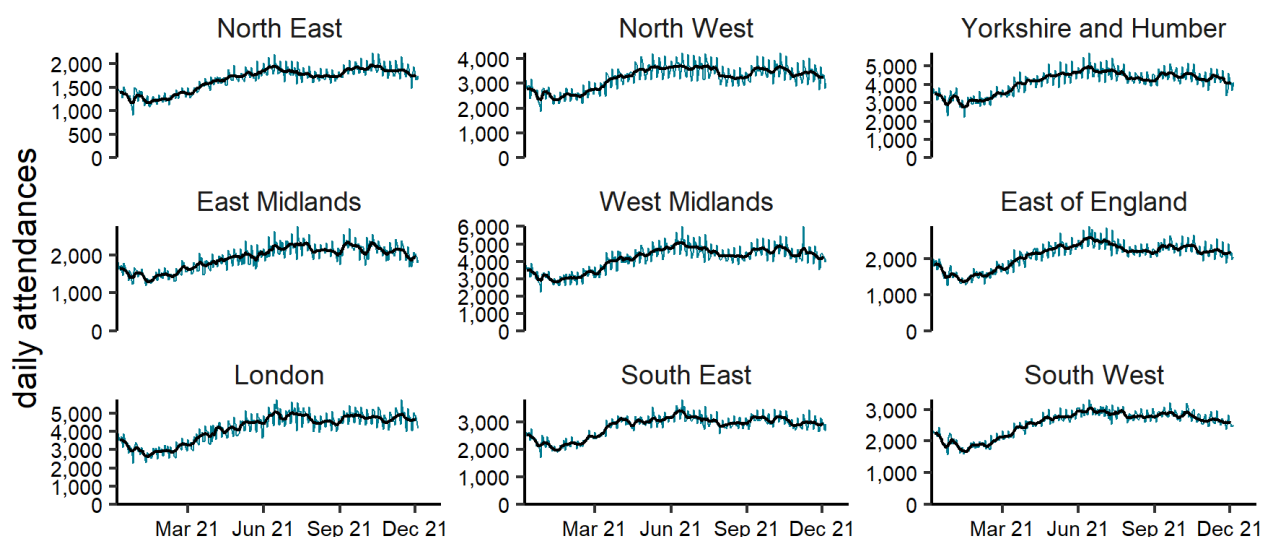


(b) Total attendances by age group (years) 06/12/2020 - 05/12/2021



NOTE: SCALES MAY VARY IN EACH GRAPH TO ENABLE TREND COMPARISON.
Black line is 7 day moving average adjusted for bank holidays.

(c) Total attendances by region 06/12/2020 - 05/12/2021



NOTE: SCALES MAY VARY IN EACH GRAPH TO ENABLE TREND COMPARISON.
Black line is 7 day moving average adjusted for bank holidays.

Table 2: The number of emergency department (ED) attendances and number with a diagnosis code included in surveillance each day during the most recent week.

Date	Total attendances ²	Diagnoses included ²
29 November 2021	30,164	20,643
30 November 2021	29,007	19,801
01 December 2021	28,363	19,241
02 December 2021	27,603	19,630
03 December 2021	27,223	18,449
04 December 2021	25,421	16,892
05 December 2021	26,539	17,958

Table 3: The number of EDs in total and in each UKHSA Region included in surveillance each day during the most recent week.

UKHSA Region	Number of EDs ²
North East	8
North West	13
Yorkshire and Humber	17
West Midlands	17
East Midlands	9
East of England	9
London	16
South West	13
South East	15
Total	117

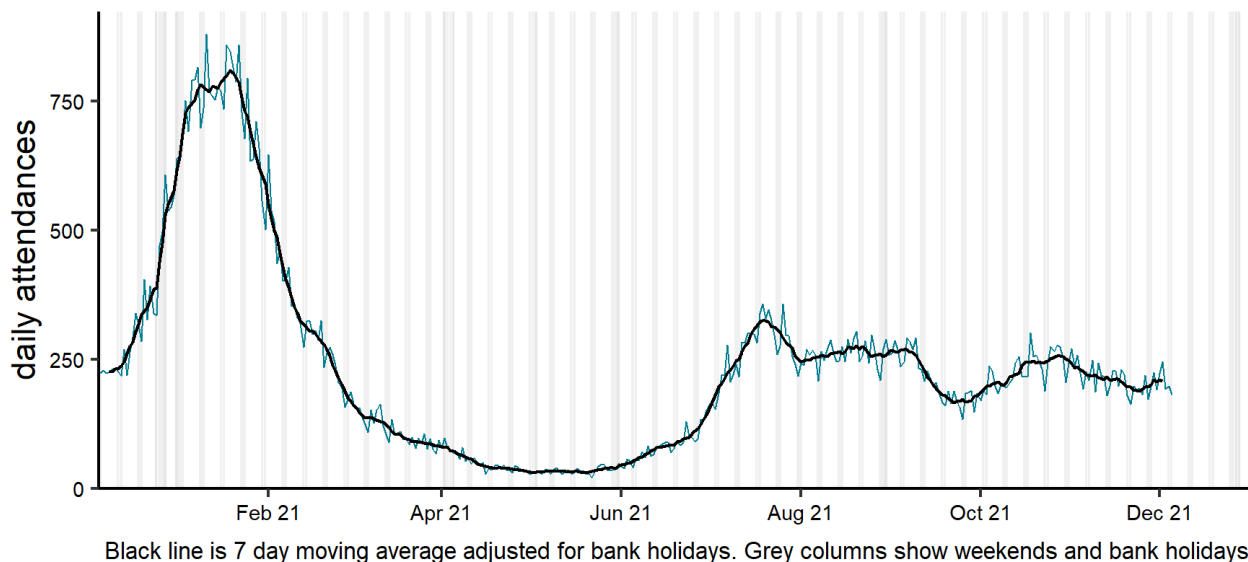
² only attendances from Type 01 EDs meeting the weekly reporting criteria are included in this report, see **Notes and caveats** for further details.

Respiratory conditions

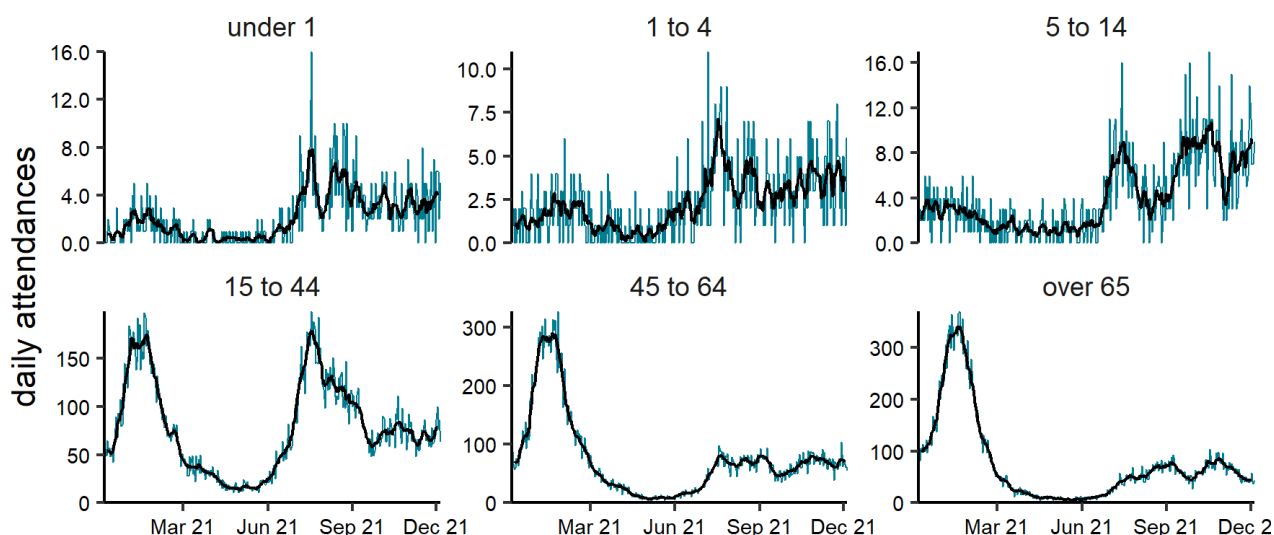
COVID-19-like

Figure 2: Daily number of COVID-19-like ED attendances (and 7-day moving average adjusted for bank holidays), England (a) nationally, (b) by age and (c) by UKHSA Region.

(a) COVID-19-like 06/12/2020 - 05/12/2021

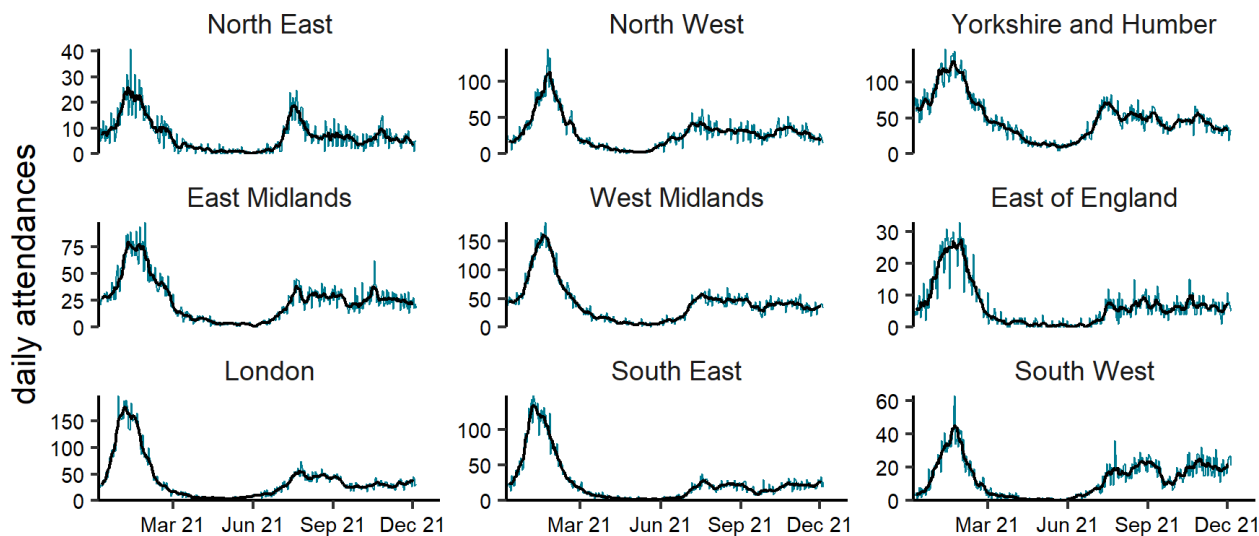


(b) COVID-19-like by age group (years) 06/12/2020 - 05/12/2021



(c)

COVID-19-like by region 06/12/2020 - 05/12/2021

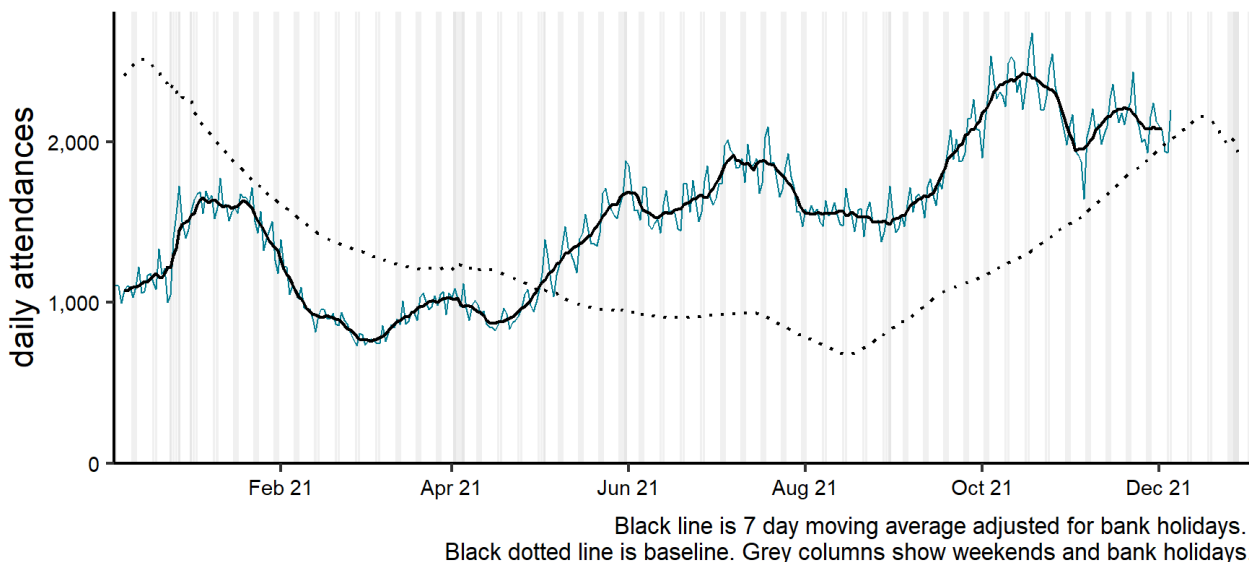


NOTE: SCALES MAY VARY IN EACH GRAPH TO ENABLE TREND COMPARISON.
Black line is 7 day moving average adjusted for bank holidays.

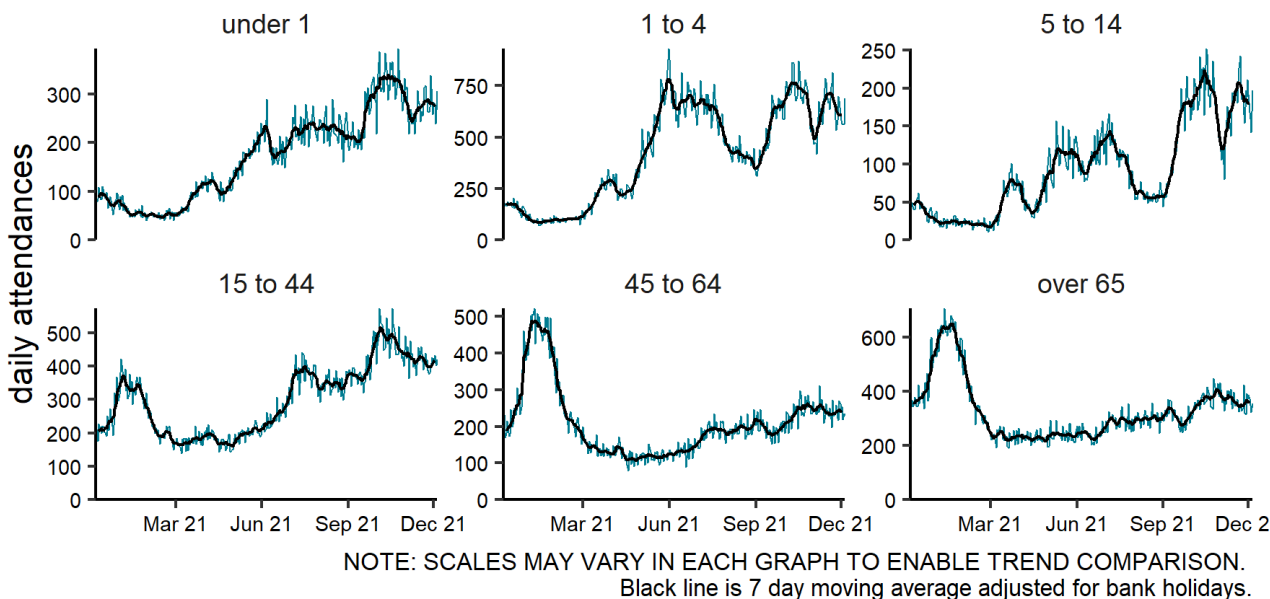
Acute respiratory infections

Figure 3: Daily number of acute respiratory infection ED attendances (and 7-day moving average adjusted for bank holidays), England (a) nationally, (b) by age and (c) by UKHSA Region.

(a) Acute respiratory infection 06/12/2020 - 05/12/2021

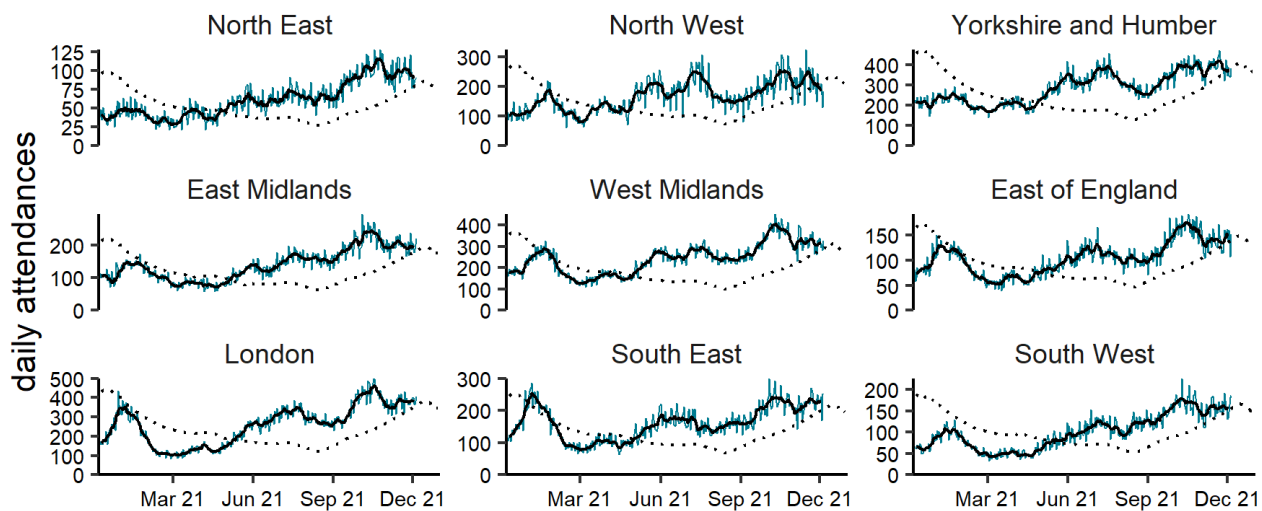


(b) Acute respiratory infection by age group (years) 06/12/2020 - 05/12/2021



(c)

Acute respiratory infection by region 06/12/2020 - 05/12/2021



NOTE: SCALES MAY VARY IN EACH GRAPH TO ENABLE TREND COMPARISON.

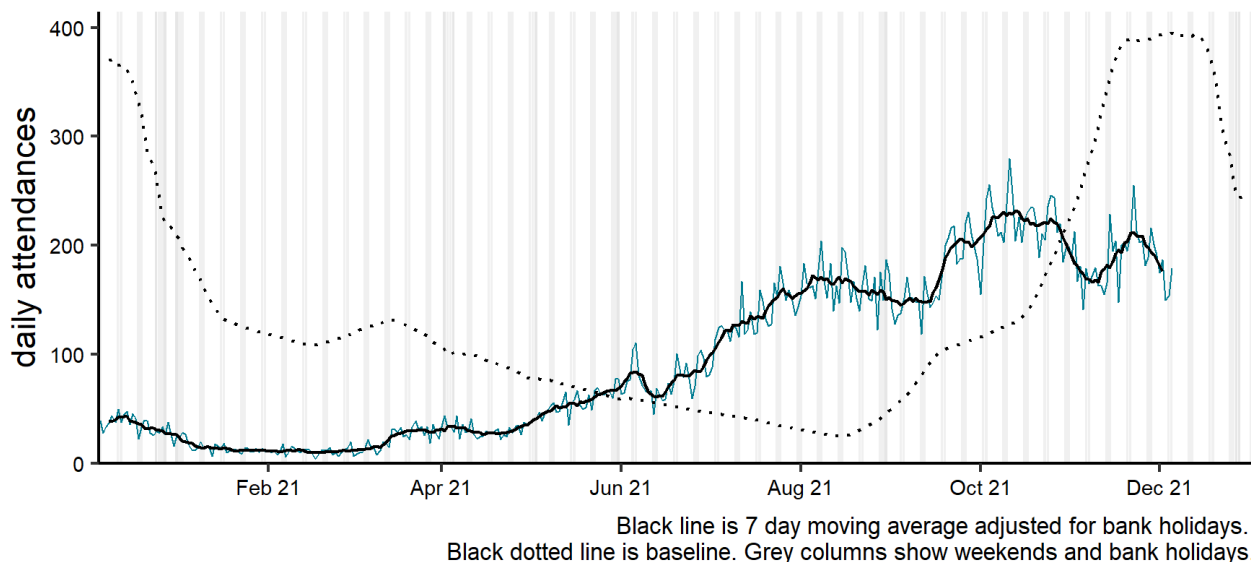
Black line is 7 day moving average adjusted for bank holidays.

Black dotted line is baseline.

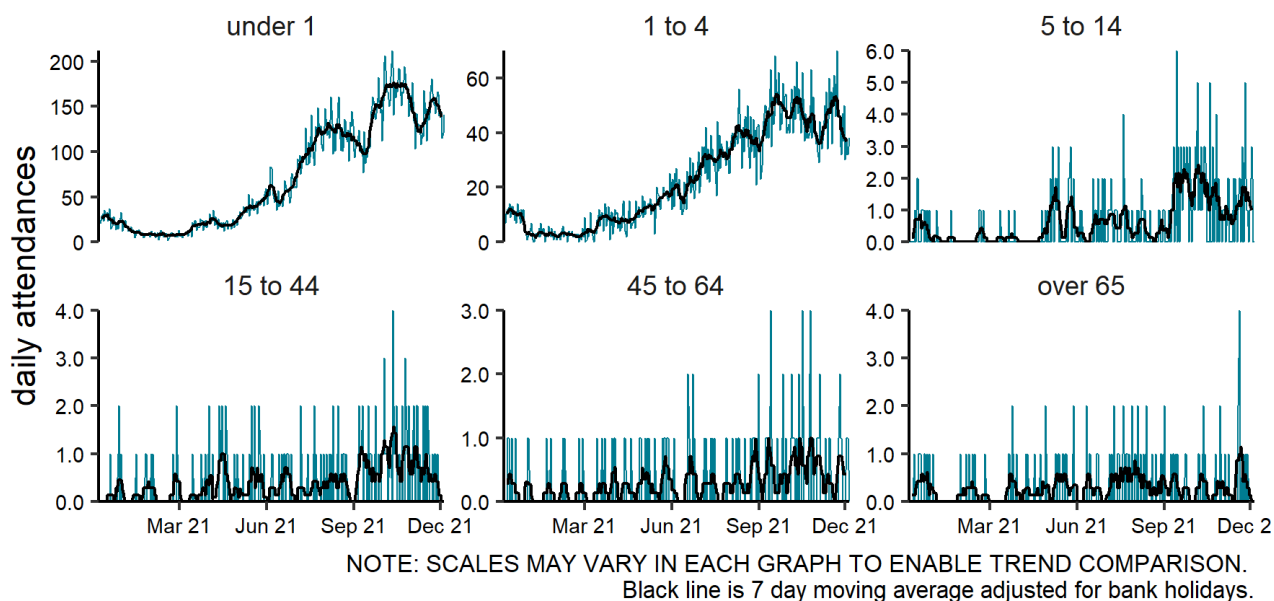
Acute bronchiolitis/ bronchitis

Figure 4: Daily number of acute bronchiolitis/bronchitis ED attendances (and 7-day moving average adjusted for bank holidays), England (a) nationally, (b) by age and (c) by UKHSA Region.

(a) Acute bronchiolitis 06/12/2020 - 05/12/2021

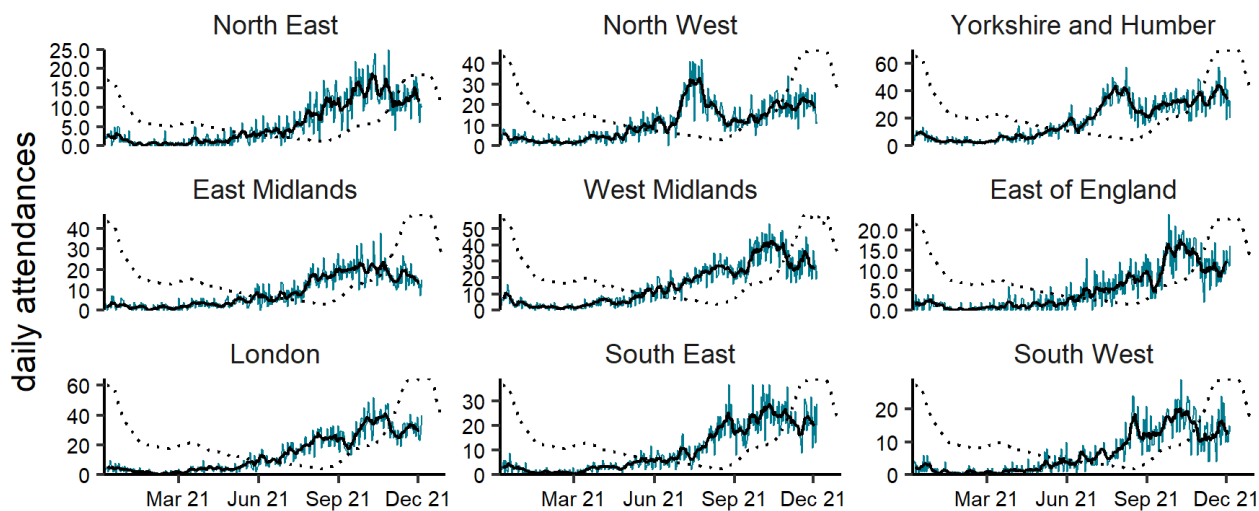


(b) Acute bronchiolitis by age group (years) 06/12/2020 - 05/12/2021



(c)

Acute bronchiolitis by region 06/12/2020 - 05/12/2021



NOTE: SCALES MAY VARY IN EACH GRAPH TO ENABLE TREND COMPARISON.

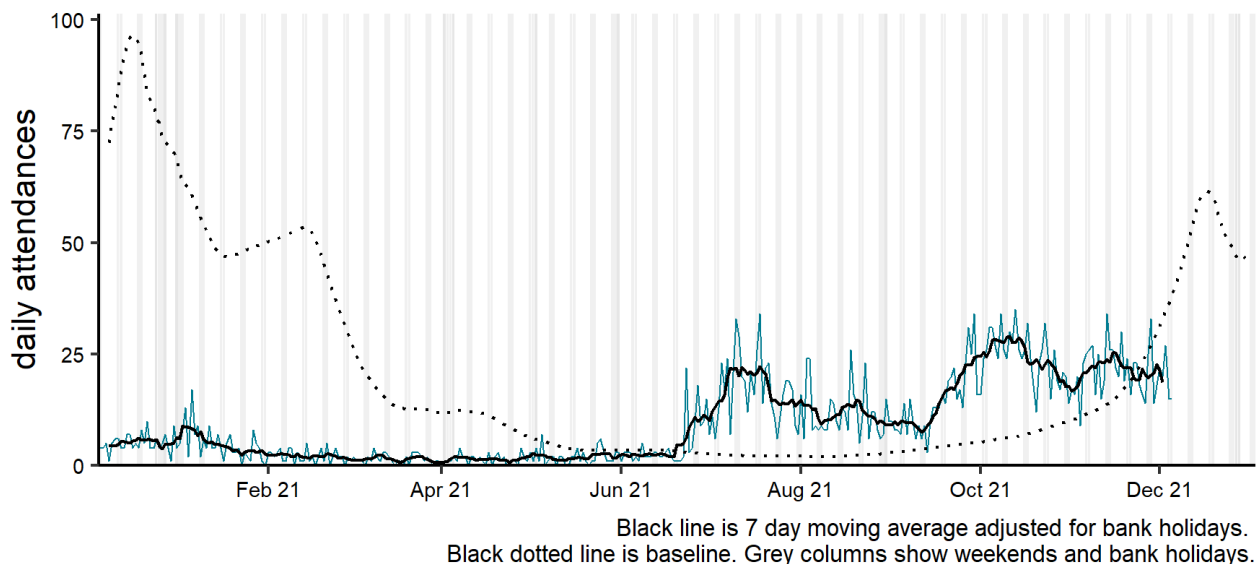
Black line is 7 day moving average adjusted for bank holidays.

Black dotted line is baseline.

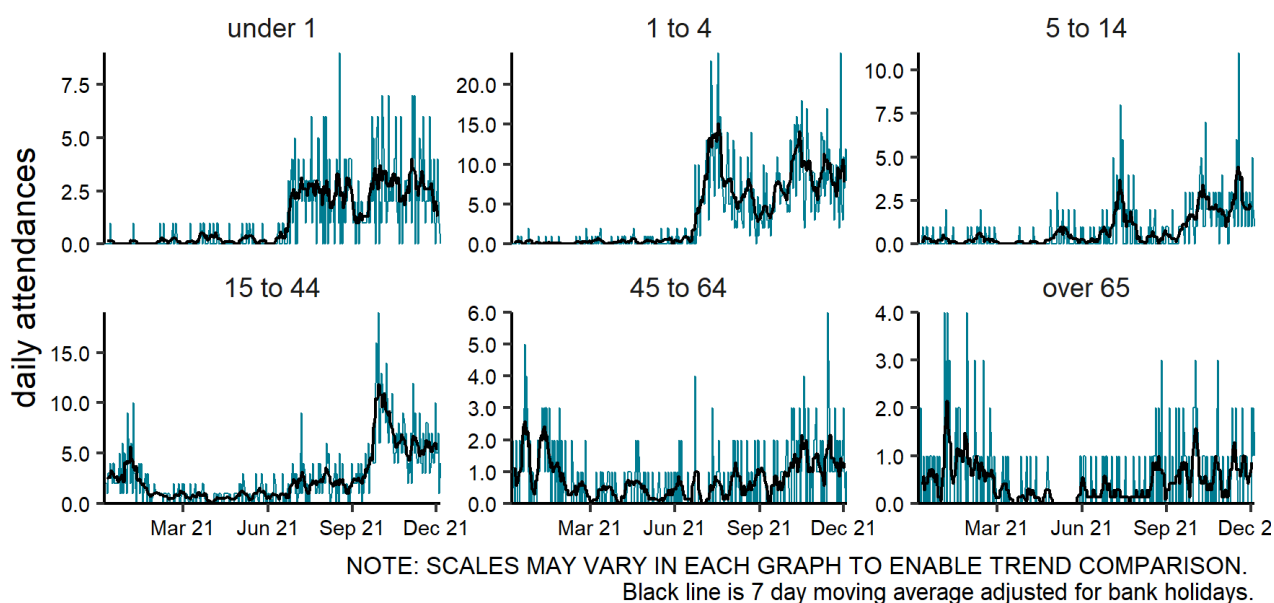
Influenza-like illness

Figure 5: Daily number of influenza-like illness ED attendances (and 7-day moving average adjusted for bank holidays), England (a) nationally, (b) by age and (c) by UKHSA Region.

(a) Influenza-like illness 06/12/2020 - 05/12/2021

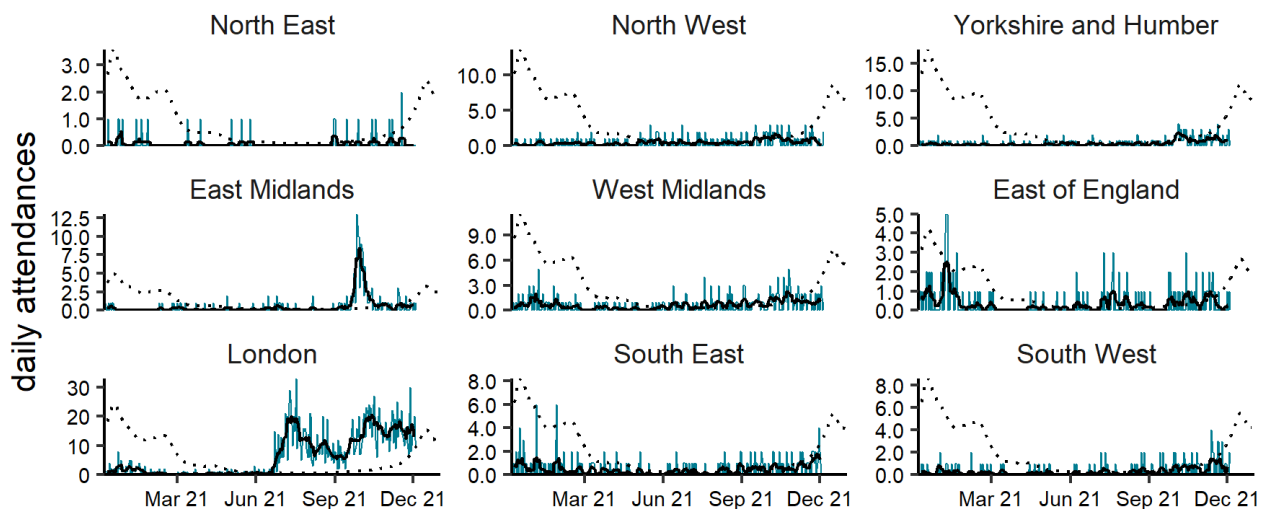


(b) Influenza-like illness by age group (years) 06/12/2020 - 05/12/2021



(c)

Influenza-like illness by region 06/12/2020 - 05/12/2021



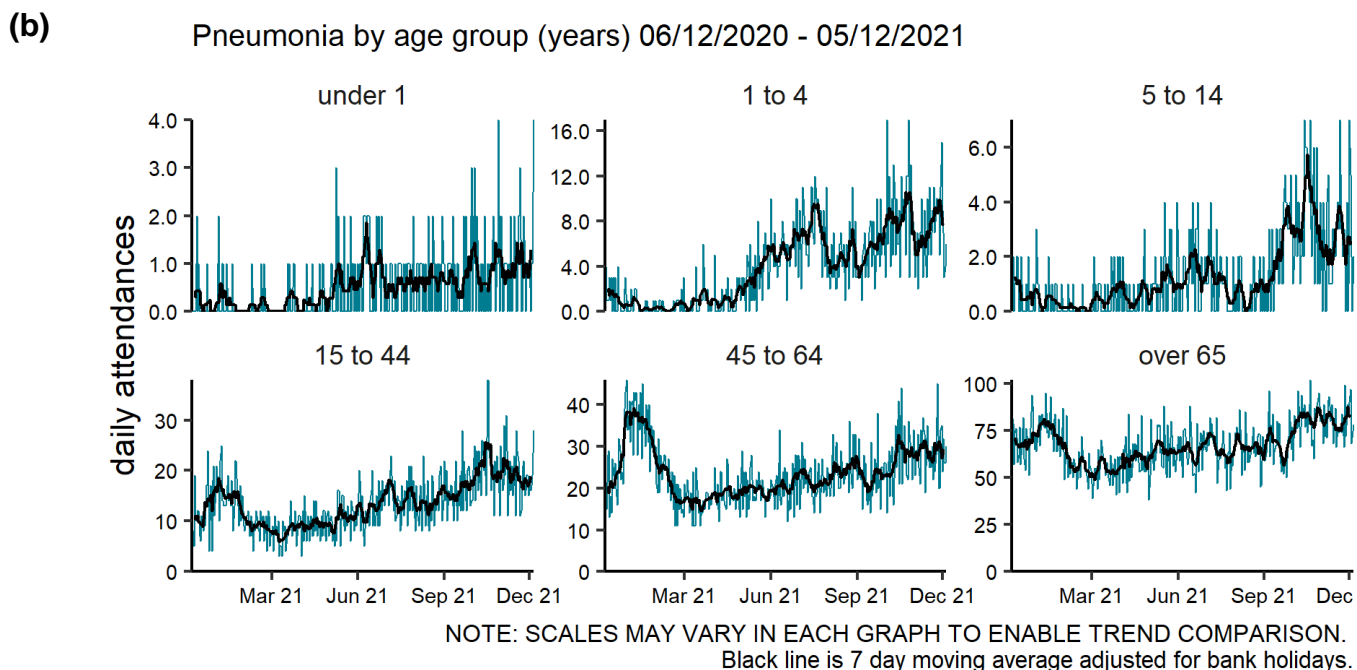
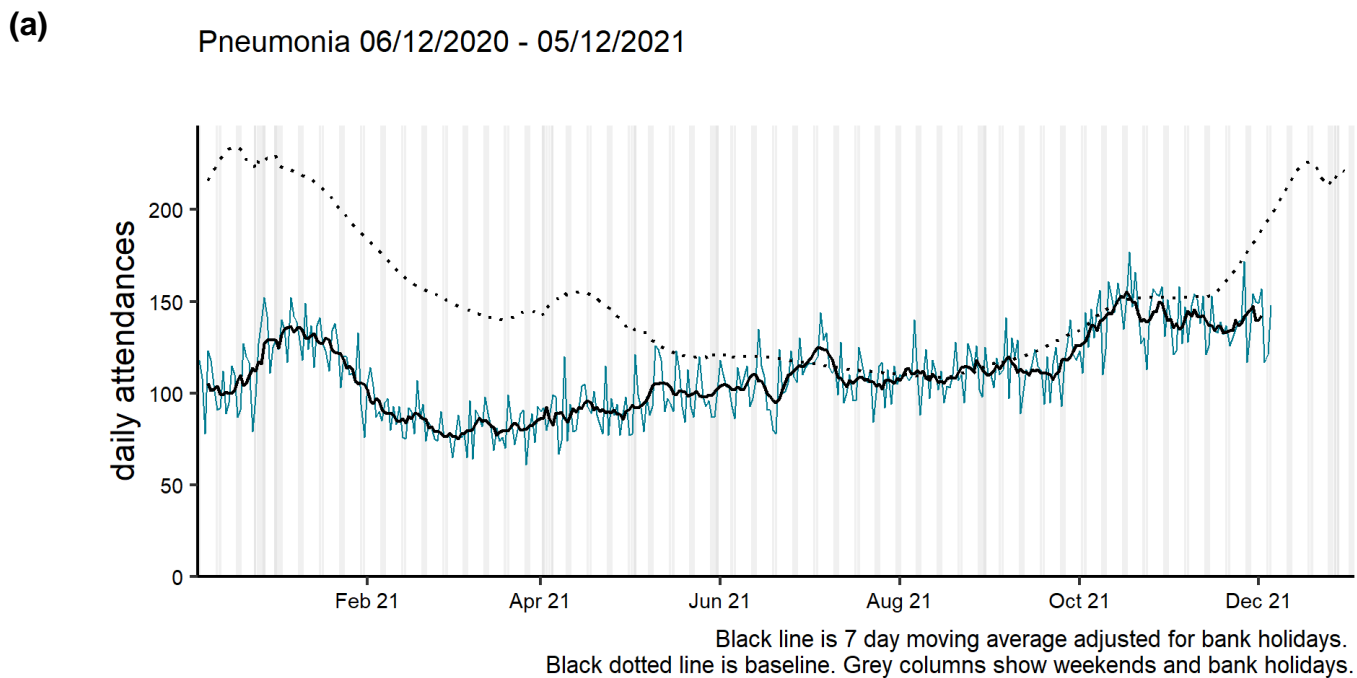
NOTE: SCALES MAY VARY IN EACH GRAPH TO ENABLE TREND COMPARISON.

Black line is 7 day moving average adjusted for bank holidays.

Black dotted line is baseline.

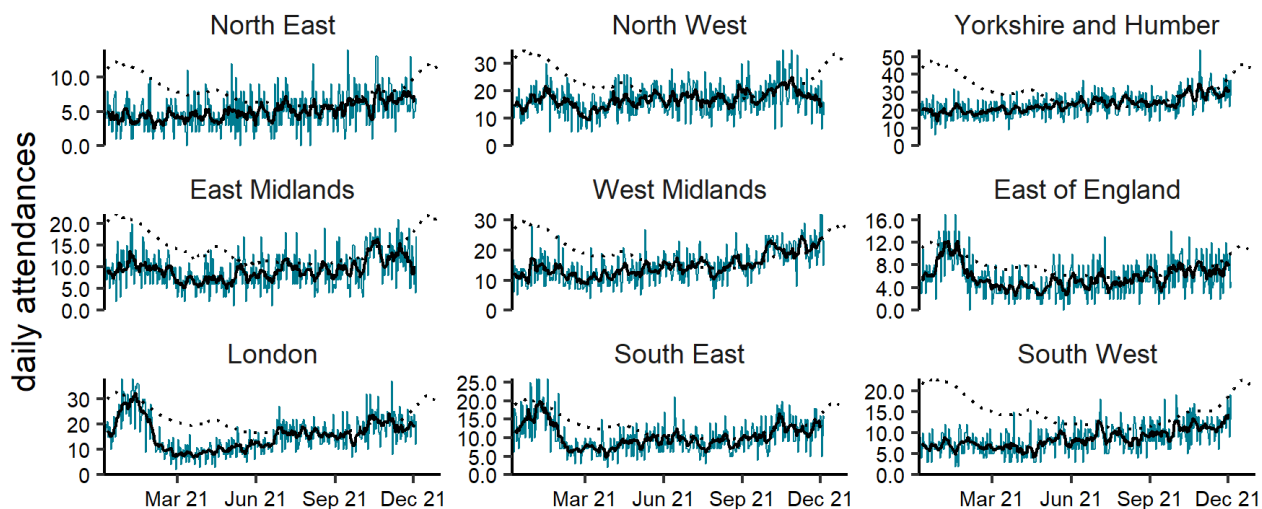
Pneumonia

Figure 6: Daily number of pneumonia ED attendances (and 7-day moving average adjusted for bank holidays), England (a) nationally, (b) by age and (c) by UKHSA Region.



(c)

Pneumonia by region 06/12/2020 - 05/12/2021

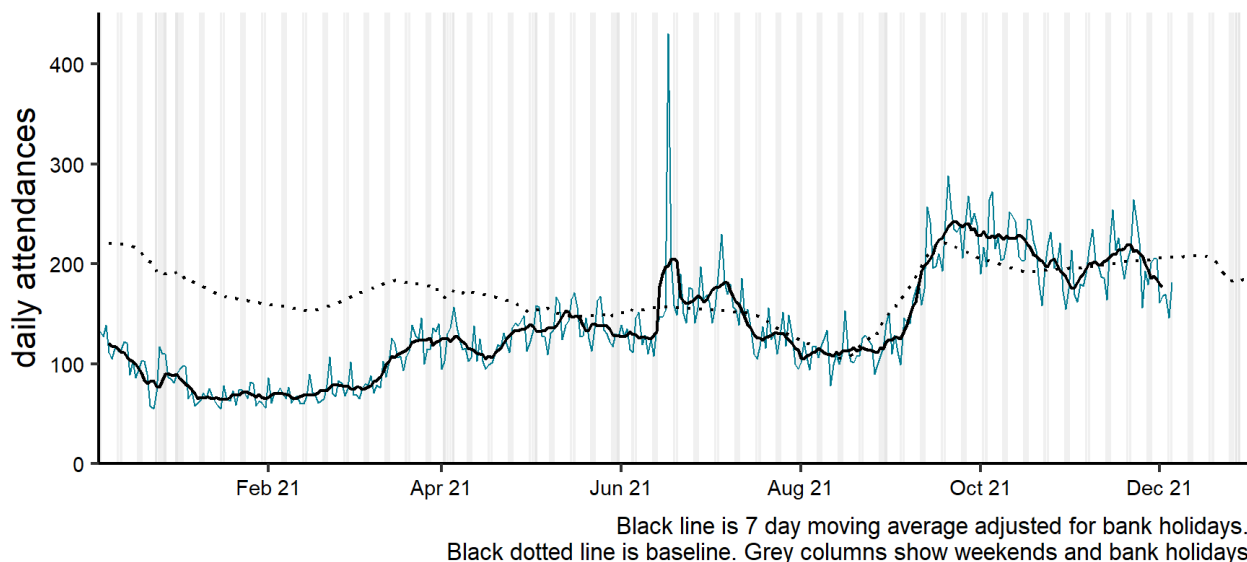


NOTE: SCALES MAY VARY IN EACH GRAPH TO ENABLE TREND COMPARISON.
Black line is 7 day moving average adjusted for bank holidays.
Black dotted line is baseline.

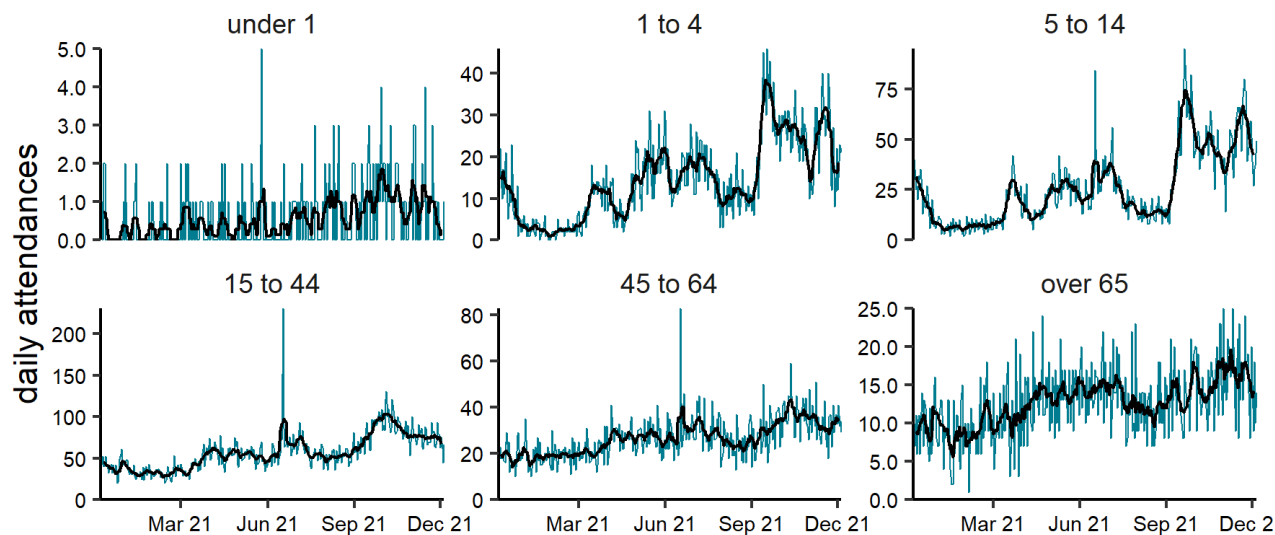
Asthma

Figure 7: Daily number of asthma ED attendances (and 7-day moving average adjusted for bank holidays), England (a) nationally, (b) by age and (c) by UKHSA Region.

(a) Asthma 06/12/2020 - 05/12/2021



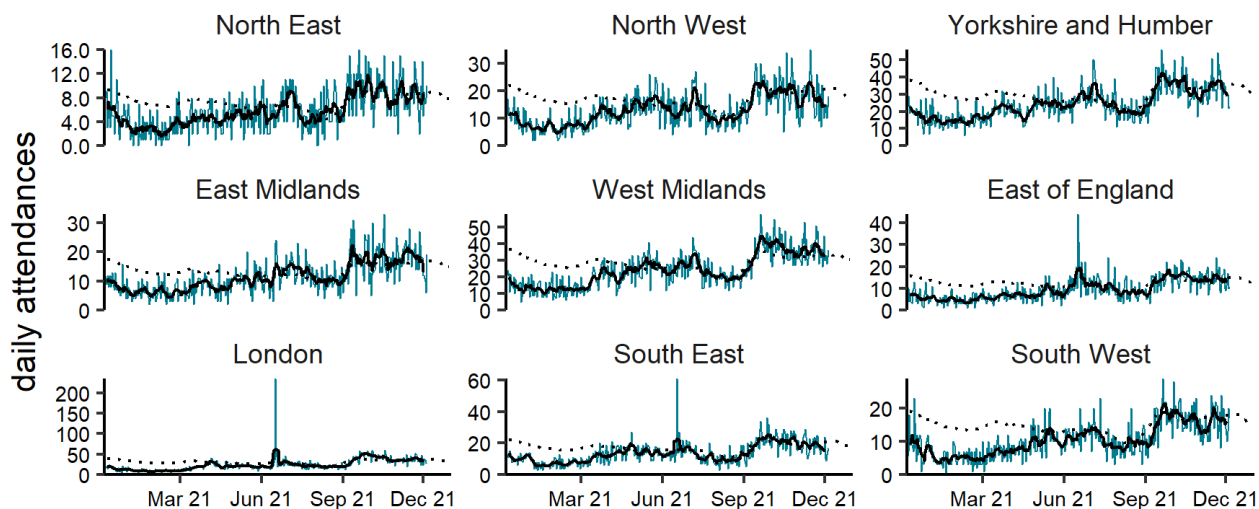
(b) Asthma by age group (years) 06/12/2020 - 05/12/2021



NOTE: SCALES MAY VARY IN EACH GRAPH TO ENABLE TREND COMPARISON.
Black line is 7 day moving average adjusted for bank holidays.

(c)

Asthma by region 06/12/2020 - 05/12/2021



NOTE: SCALES MAY VARY IN EACH GRAPH TO ENABLE TREND COMPARISON.

Black line is 7 day moving average adjusted for bank holidays.

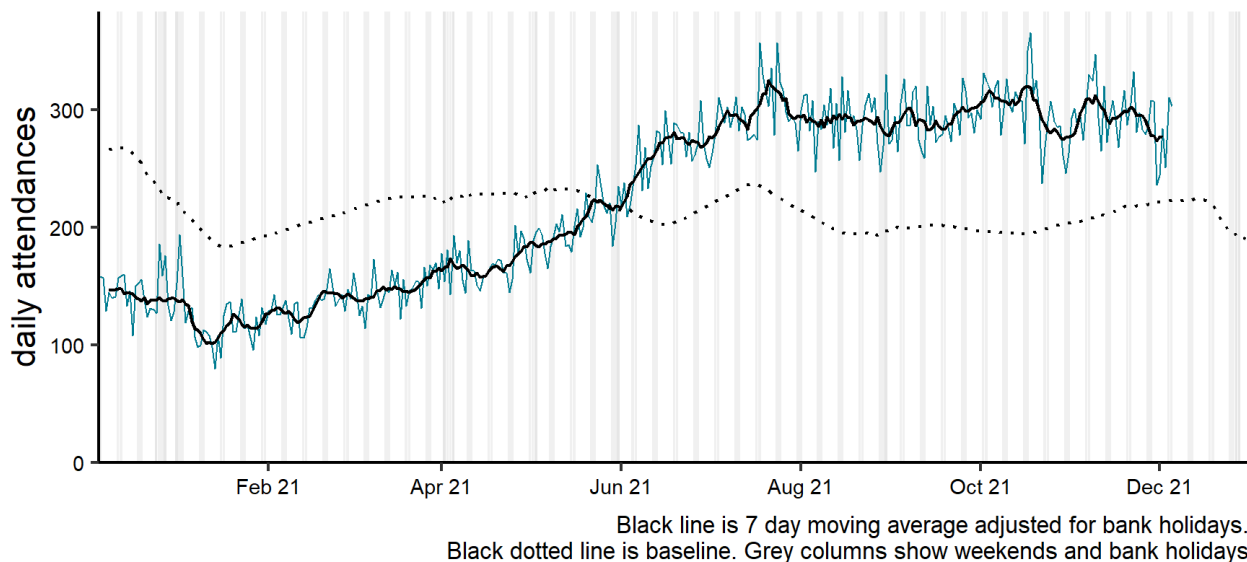
Black dotted line is baseline.

Gastrointestinal conditions

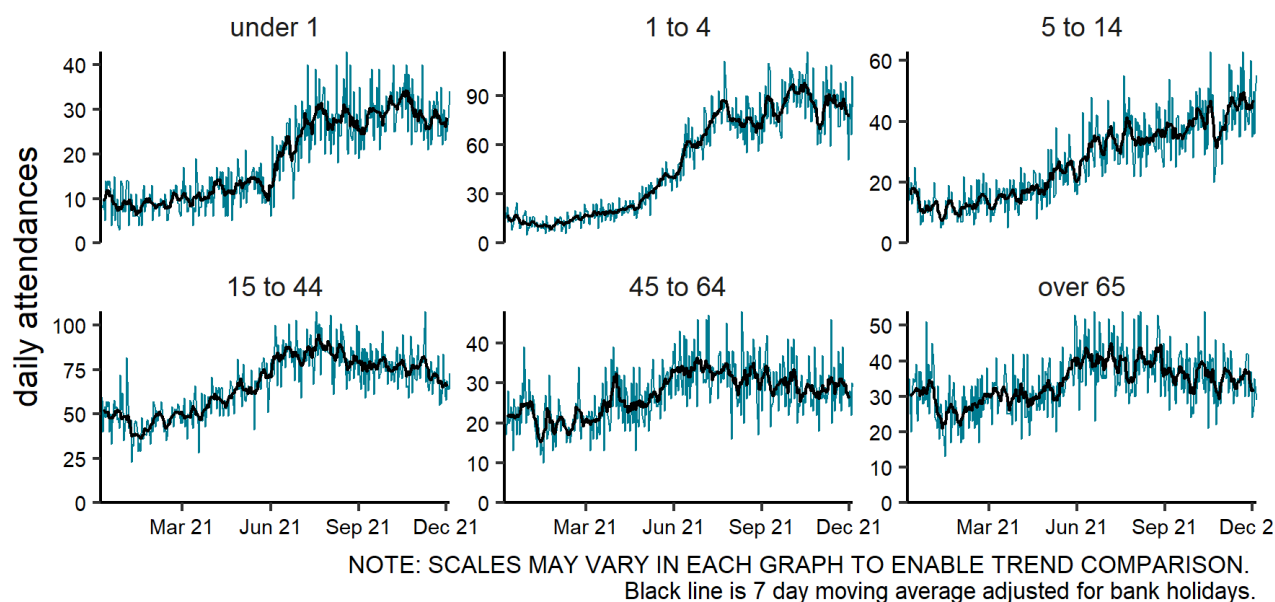
Gastroenteritis

Figure 8: Daily number of gastroenteritis ED attendances (and 7-day moving average adjusted for bank holidays), England (a) nationally, (b) by age and (c) by UKHSA Region.

(a) Gastroenteritis 06/12/2020 - 05/12/2021

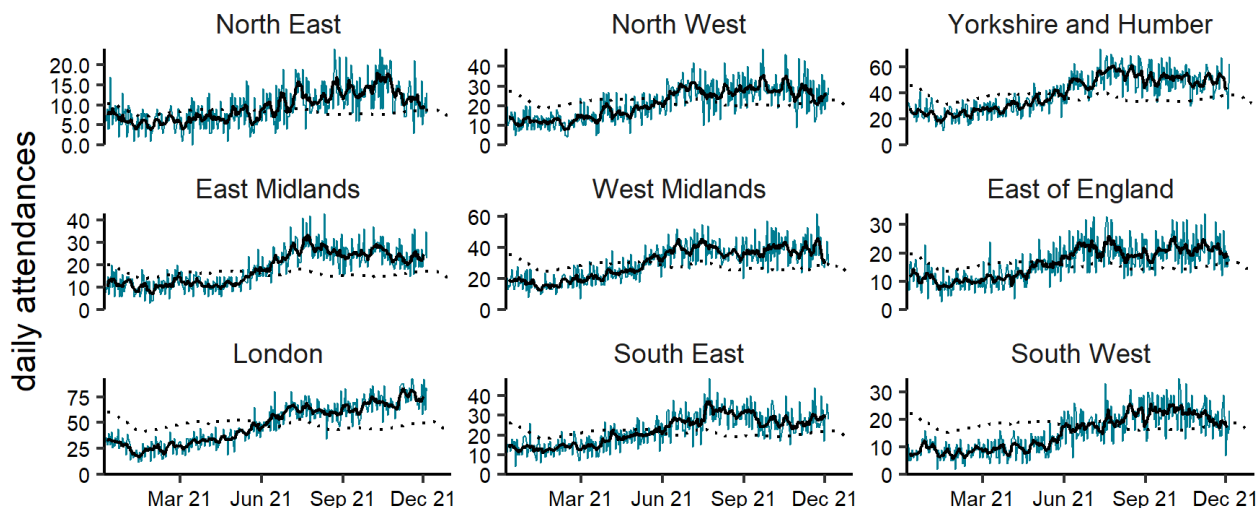


(b) Gastroenteritis by age group (years) 06/12/2020 - 05/12/2021



(c)

Gastroenteritis by region 06/12/2020 - 05/12/2021



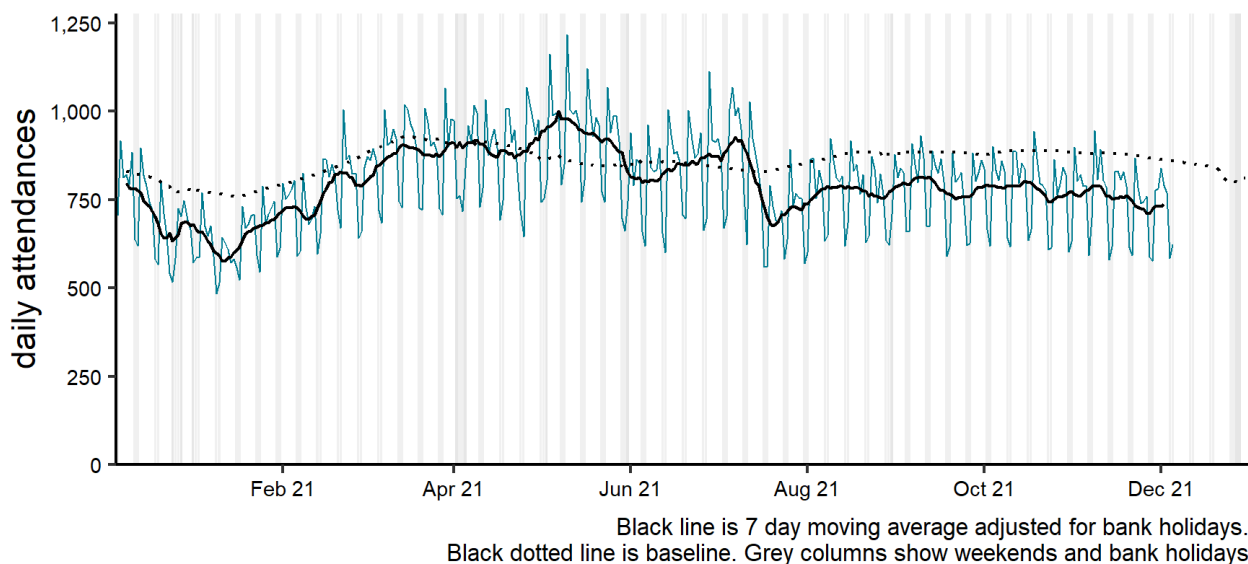
NOTE: SCALES MAY VARY IN EACH GRAPH TO ENABLE TREND COMPARISON.
Black line is 7 day moving average adjusted for bank holidays.
Black dotted line is baseline.

Cardiac conditions

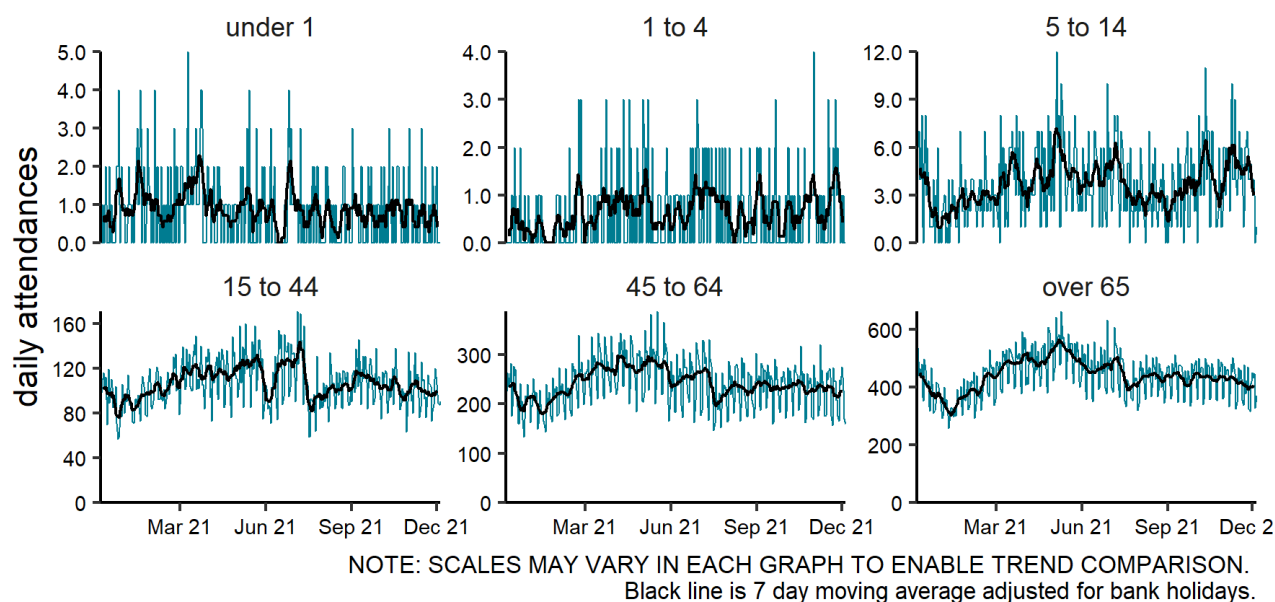
Cardiac

Figure 9: Daily number of cardiac ED attendances (and 7-day moving average adjusted for bank holidays), England (a) nationally, (b) by age and (c) by UKHSA Region.

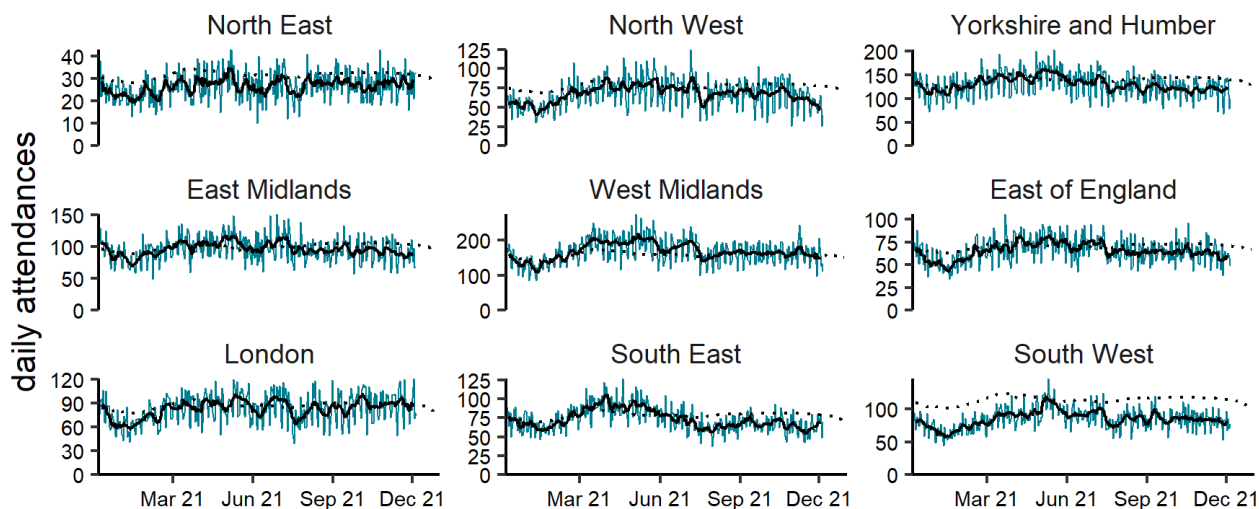
(a) Cardiac conditions 06/12/2020 - 05/12/2021



(b) Cardiac conditions by age group (years) 06/12/2020 - 05/12/2021



(c) Cardiac conditions by region 06/12/2020 - 05/12/2021

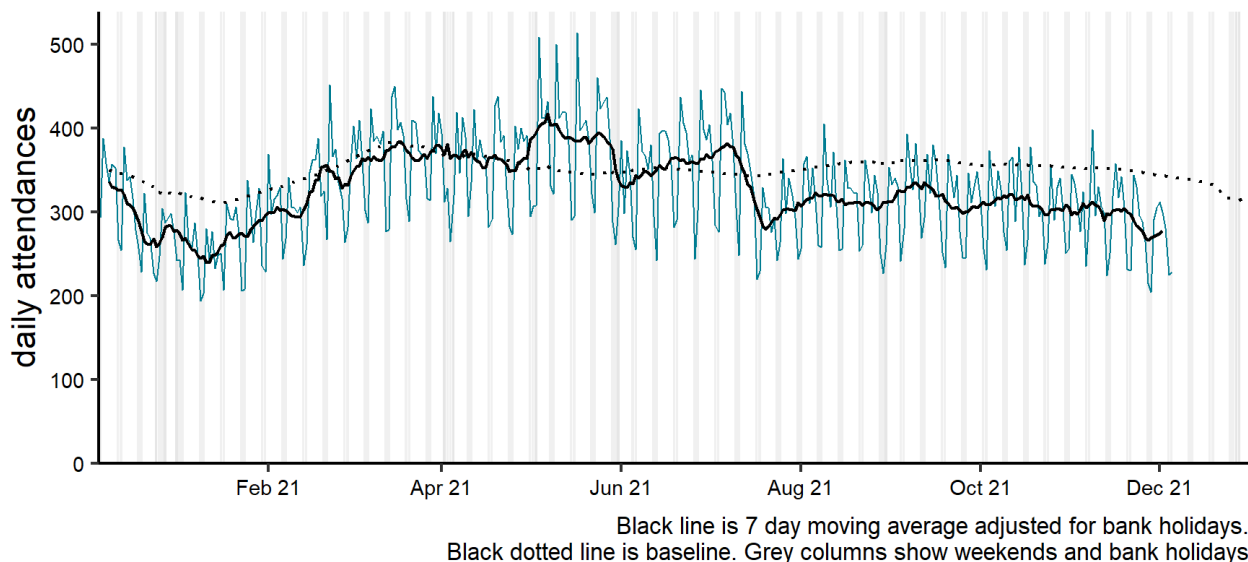


NOTE: SCALES MAY VARY IN EACH GRAPH TO ENABLE TREND COMPARISON.
Black line is 7 day moving average adjusted for bank holidays.
Black dotted line is baseline.

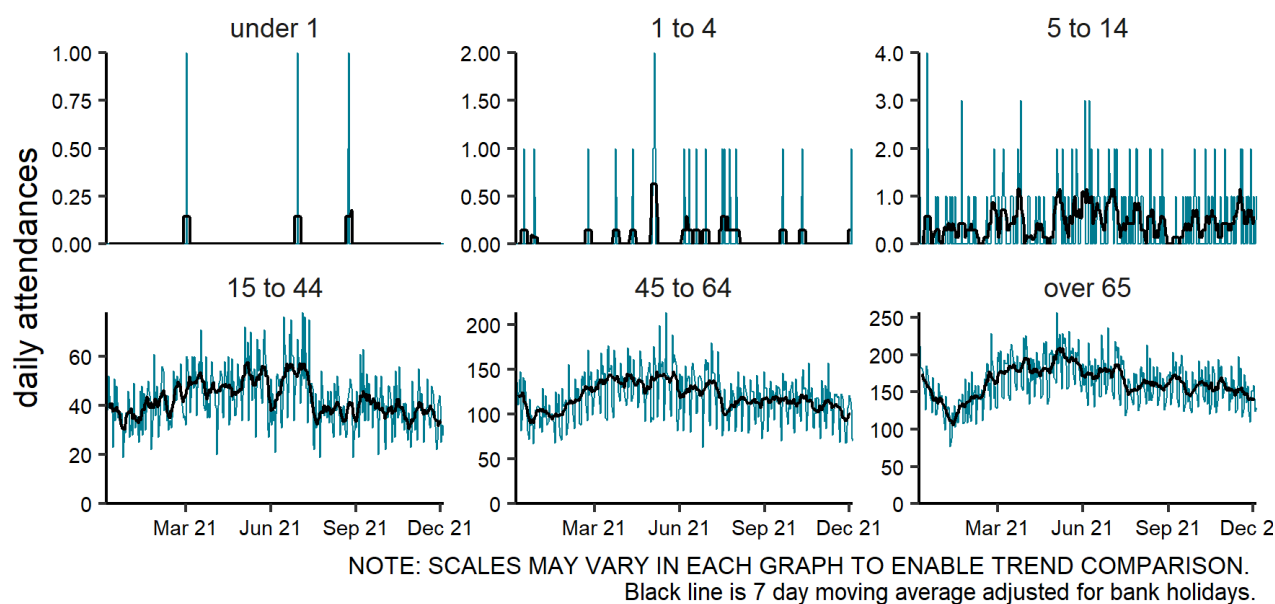
Myocardial ischaemia

Figure 10: Daily number of myocardial ischaemia ED attendances (and 7-day moving average adjusted for bank holidays), England (a) nationally, (b) by age and (c) by UKHSA Region.

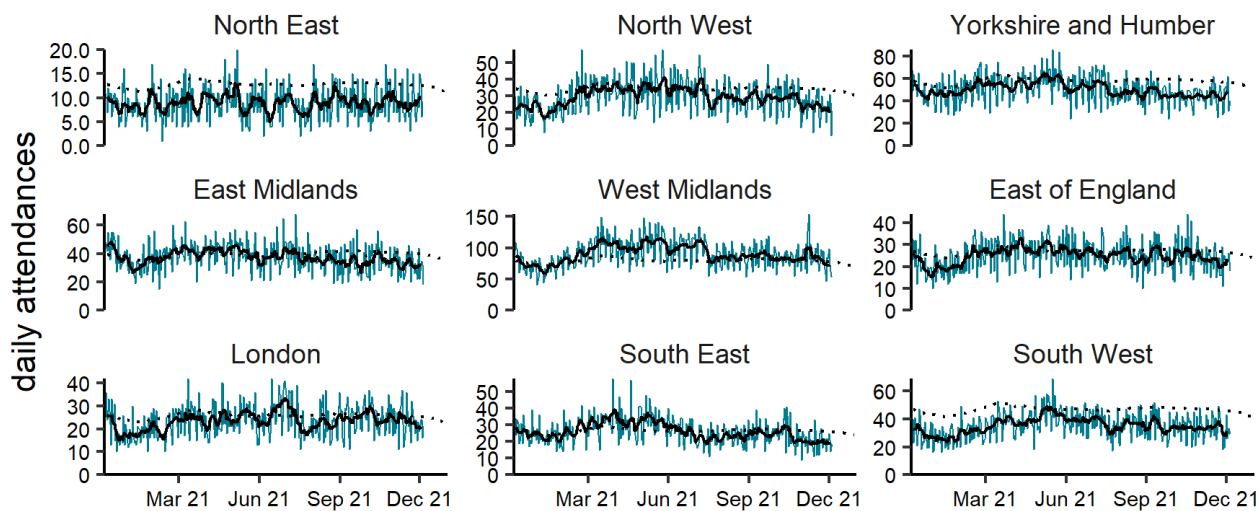
(a) Myocardial ischaemia 06/12/2020 - 05/12/2021



(b) Myocardial ischaemia by age group (years) 06/12/2020 - 05/12/2021



(c) Myocardial ischaemia by region 06/12/2020 - 05/12/2021



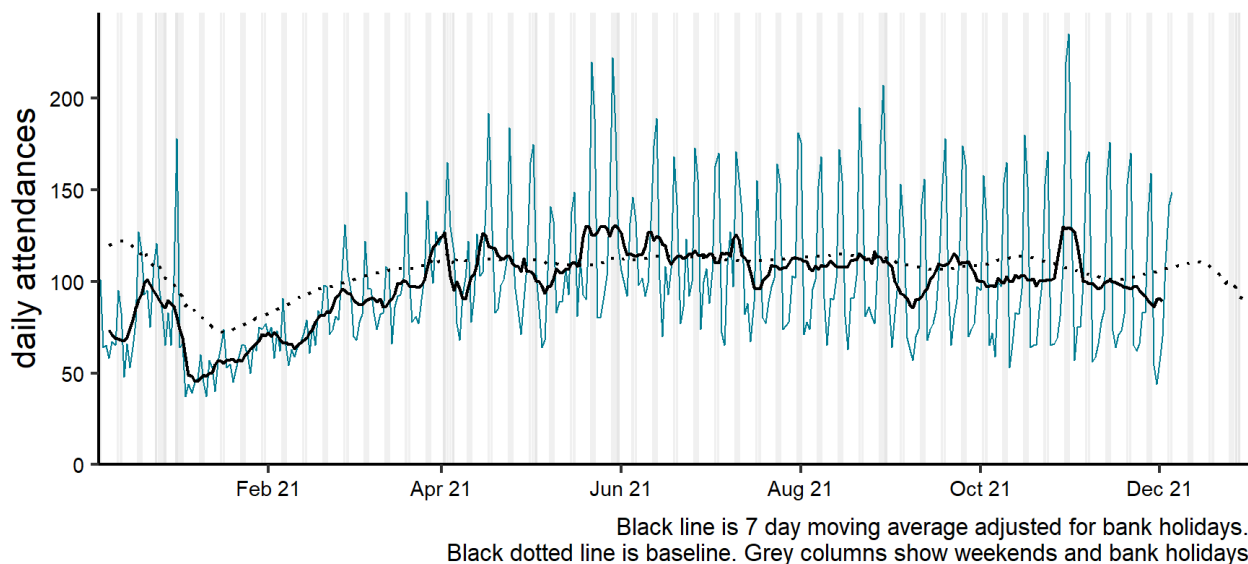
NOTE: SCALES MAY VARY IN EACH GRAPH TO ENABLE TREND COMPARISON.
Black line is 7 day moving average adjusted for bank holidays.
Black dotted line is baseline.

Other conditions

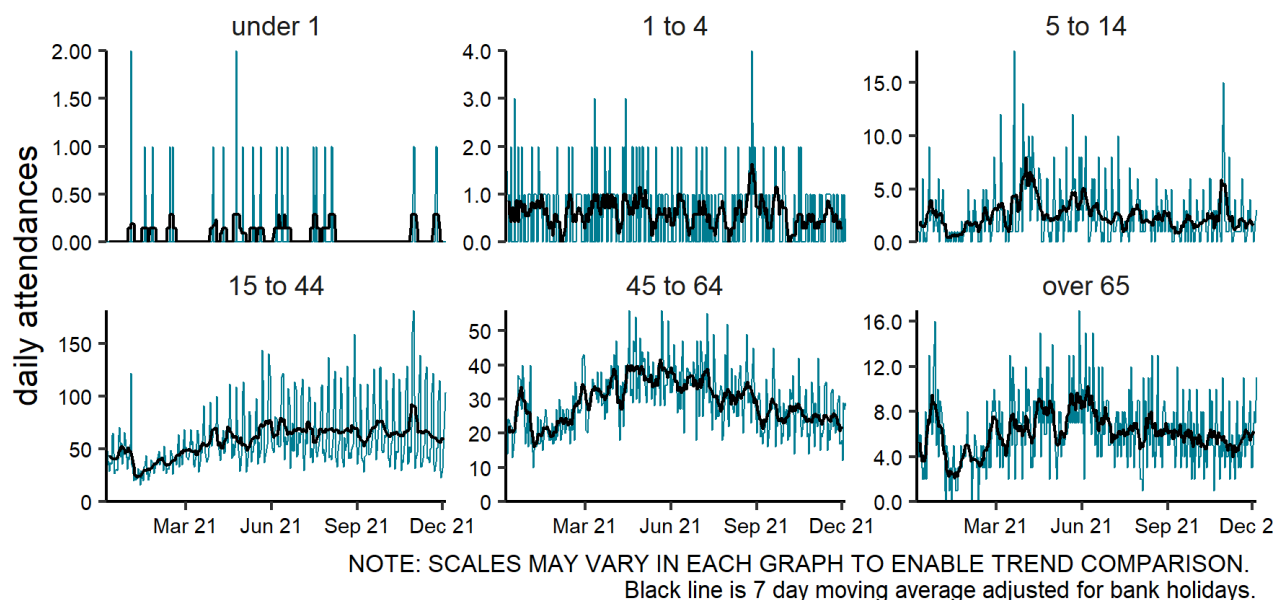
Acute alcohol intoxication

Figure 11: Daily number of acute alcohol intoxication ED attendances (and 7-day moving average adjusted for bank holidays), England (a) nationally, (b) by age and (c) by UKHSA Region.

(a) Acute alcohol intoxication 06/12/2020 - 05/12/2021

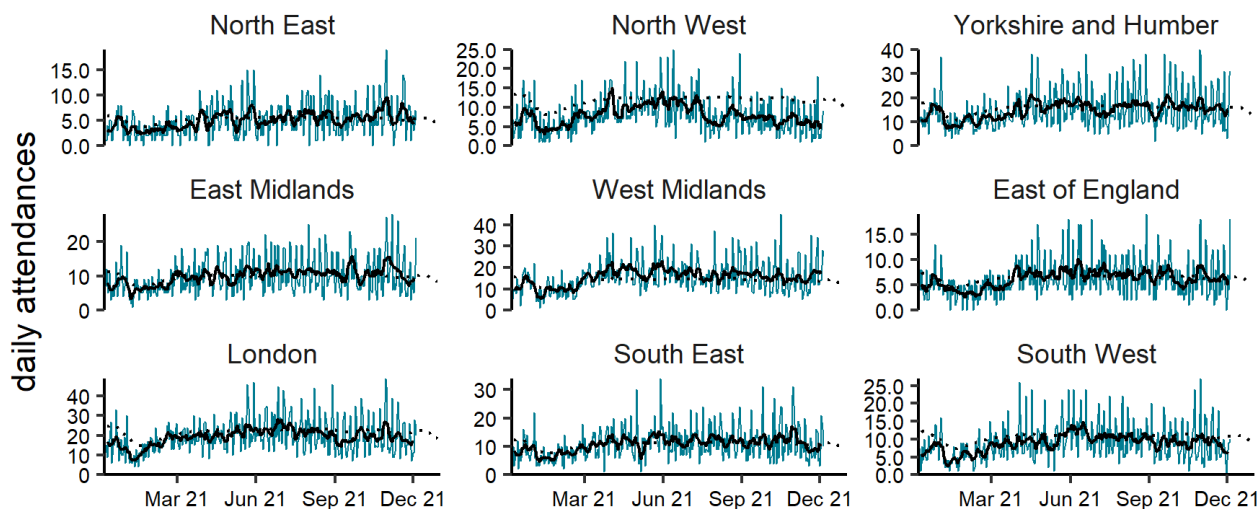


(b) Acute alcohol intoxication by age group (years) 06/12/2020 - 05/12/2021



(c)

Acute alcohol intoxication by region 06/12/2020 - 05/12/2021



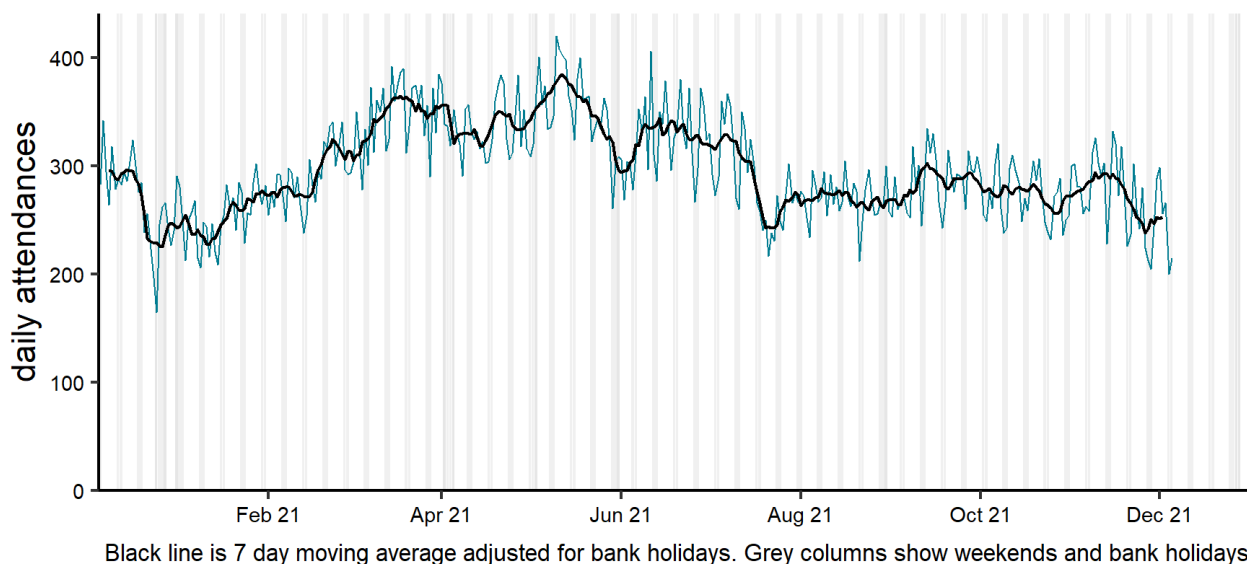
NOTE: SCALES MAY VARY IN EACH GRAPH TO ENABLE TREND COMPARISON.
Black line is 7 day moving average adjusted for bank holidays.
Black dotted line is baseline.

Mental health

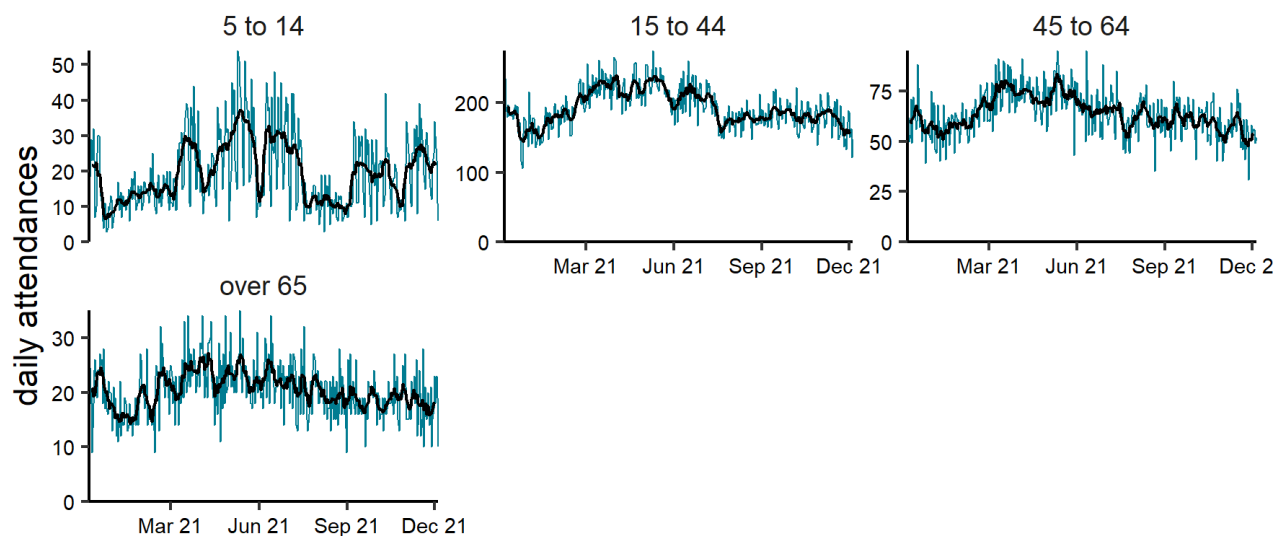
Figure 12: Daily number of mental health³ ED attendances (and 7-day moving average adjusted for bank holidays), England (a) nationally, (b) by age and (c) by UKHSA Region.

³ mental health attendances reported here are those with a primary diagnosis in the ECDS mental health diagnosis grouping. Attendances where the primary diagnosis relates to overdose, alcohol use or self harm are not included.

(a) Mental health 06/12/2020 - 05/12/2021

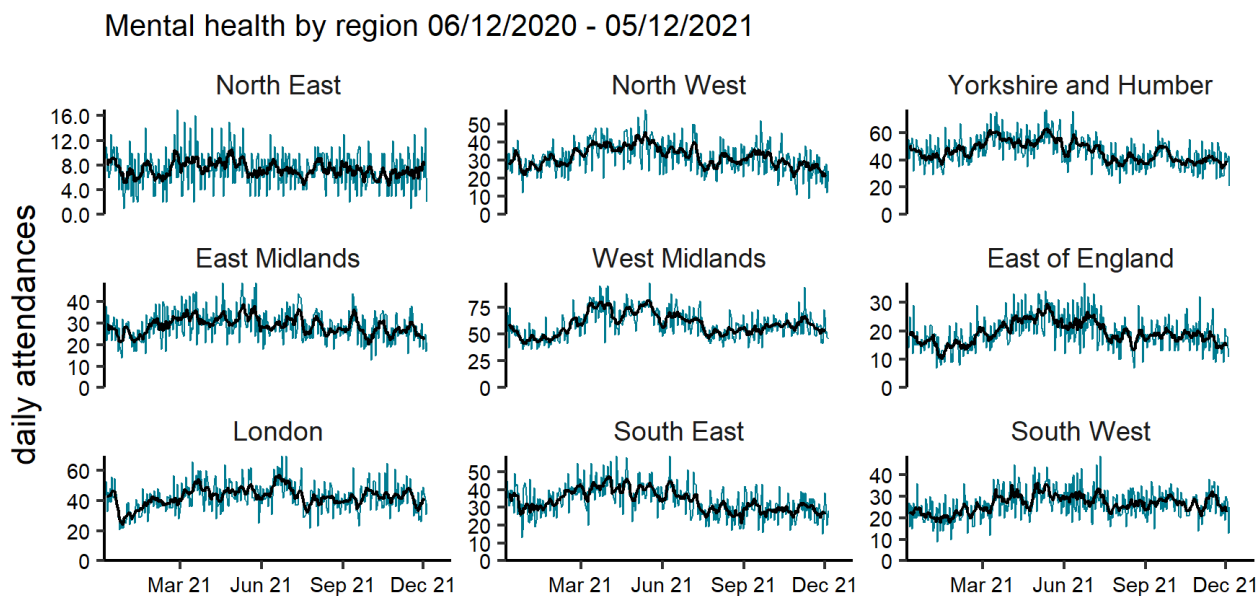


(b) Mental health by age group (years) 06/12/2020 - 05/12/2021



NOTE: SCALES MAY VARY IN EACH GRAPH TO ENABLE TREND COMPARISON.
Black line is 7 day moving average adjusted for bank holidays.

(c)



NOTE: SCALES MAY VARY IN EACH GRAPH TO ENABLE TREND COMPARISON.
Black line is 7 day moving average adjusted for bank holidays.

Seasonal environmental conditions

During set periods of the year the Met Office operates both heat and cold weather watch systems, in association with UKHSA. Syndromic indicators are used to monitor the impact of both extreme hot and cold weather in England during these periods and will be included below (where an appropriate syndromic indicator is available).

[Cold weather alert](#) period: 1 November to 31 March

[Heat-Health Alert](#) period: 1 June to 15 September

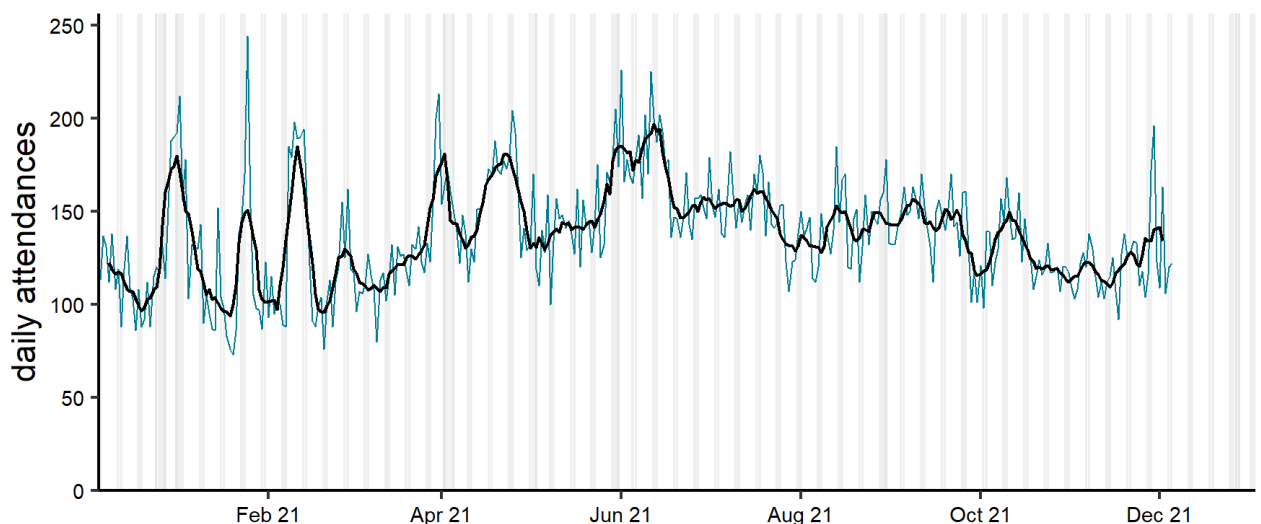
Highest weather alert level during the current reporting week: **Level 3 – Severe Weather Action**

Impact of cold

Figure 13: Daily number of impact of cold⁴ ED attendances (and 7-day moving average adjusted for bank holidays), England (a) nationally, (b) by age and (c) by UKHSA Region.

⁴ impact of cold attendances reported here are restricted to female attendances, with a primary diagnosis of fracture of the femur/wrist/forearm plus cold specific diagnoses of hypothermia, or cold injuries.

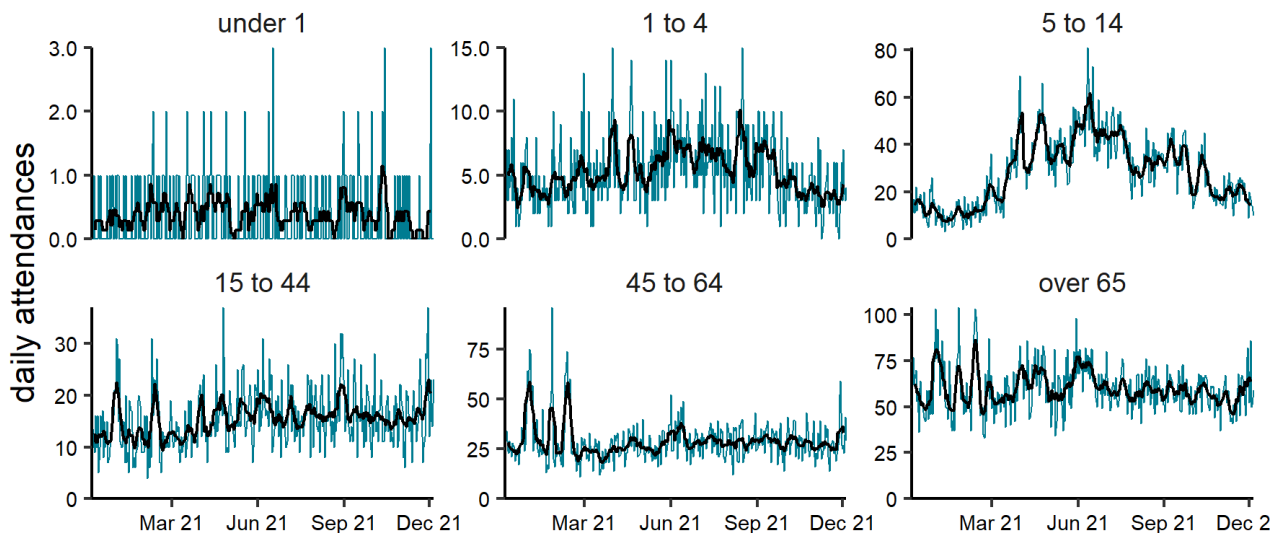
(a) Impact of cold 06/12/2020 - 05/12/2021



Black line is 7 day moving average adjusted for bank holidays. Grey columns show weekends and bank holidays.

(b)

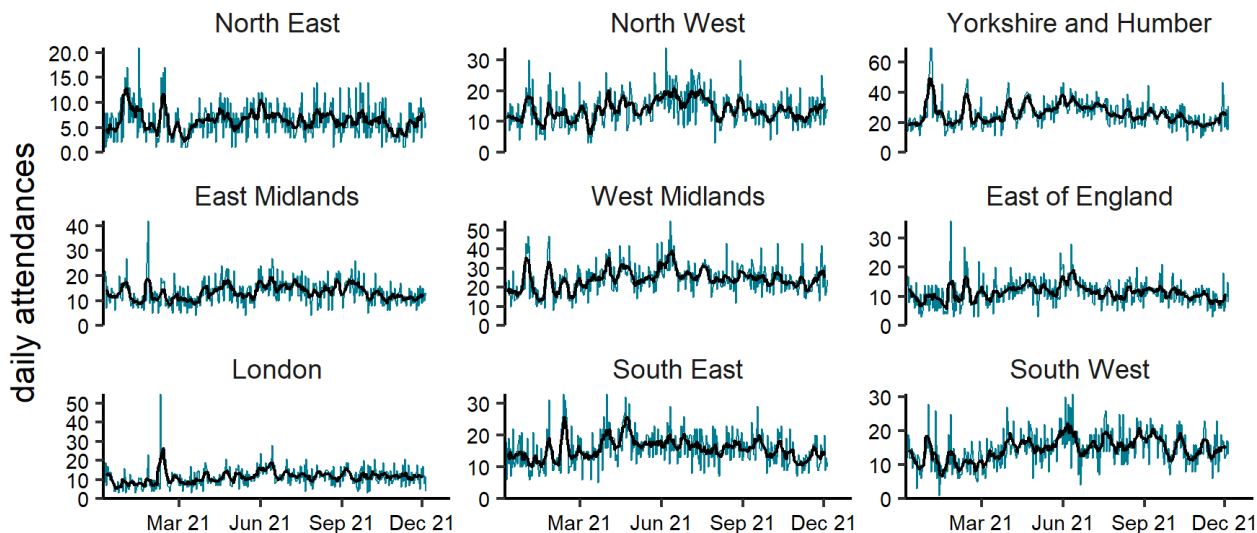
Impact of cold by age group (years) 06/12/2020 - 05/12/2021



NOTE: SCALES MAY VARY IN EACH GRAPH TO ENABLE TREND COMPARISON.
Black line is 7 day moving average adjusted for bank holidays.

(c)

Impact of cold by region 06/12/2020 - 05/12/2021



NOTE: SCALES MAY VARY IN EACH GRAPH TO ENABLE TREND COMPARISON.
Black line is 7 day moving average adjusted for bank holidays.

Notes and caveats

The following additional caveats apply to the UKHSA emergency department syndromic surveillance system:

- the data presented are based on a national syndromic surveillance system:
 - should be used to monitor trends not to estimate numbers of ‘cases’
 - an automated daily transfer of anonymised ED data is received from NHS Digital, from the [Emergency Care Data Set](#) (ECDS)
 - not all EDs currently provide data on a daily basis, EDs are eligible for inclusion in this report only where:
 - data relates to attendances at a type 01 ED
 - data for 7 of the 7 most recent days was received
 - data for those days was received within 2 calendar days of the patient arrival
 - when an ED meets these criteria, all historical data from that ED is included
 - EDs included each week is likely to change, which will affect the historical data inclusion
 - national coverage each week is included in **Table 2**,
 - the number of EDs in each region area is described in **Table 3**
- individual EDs will not be identified in these bulletins
- some syndromic indicators are hierarchical:
 - acute respiratory infections includes:
 - COVID-19-like
 - acute bronchitis or bronchiolitis
 - other and non-specific acute respiratory infections
 - influenza-like illness
 - pneumonia
 - cardiac conditions includes:
 - myocardial ischaemia
 - other and non-specific cardiac conditions
- baselines:
 - were last remodelled April 2021
 - are constructed from historical data since April 2018
 - represent seasonally expected levels of activity
 - take account of any known substantial changes in data collection, population coverage or reporting practices:
 - the COVID-19 pandemic period is excluded, to show seasonally expected levels if COVID-19 had not occurred
 - may be remodelled to include the impacts seen during periods of the COVID-19 pandemic if/when appropriate due to introduction of large scale public health interventions which may affect ED attendance levels

Acknowledgements

We are grateful to the clinicians in each ED and other staff within each Trust for their continued involvement in the EDSSS.

We thank the Royal College of Emergency Medicine, NHS Digital and NHS England for their support in the development of national EDSSS, using anonymised data collection from ECDS.

About the UK Health Security Agency

The UK Health Security Agency is an executive agency, sponsored by the [Department of Health and Social Care](#).

www.ukhsa.gov.uk

© Crown copyright 2021

Version: ED-1

Prepared by: Real-time Syndromic Surveillance Team

For queries relating to this document, please contact: syndromic.surveillance@phe.gov.uk

Published: December 2021



You may re-use this information (excluding logos) free of charge in any format or medium, under the terms of the Open Government Licence v3.0. To view this licence, visit [OGL](#). Where we have identified any third party copyright information you will need to obtain permission from the copyright holders concerned.



UKHSA supports the UN
Sustainable Development Goals

