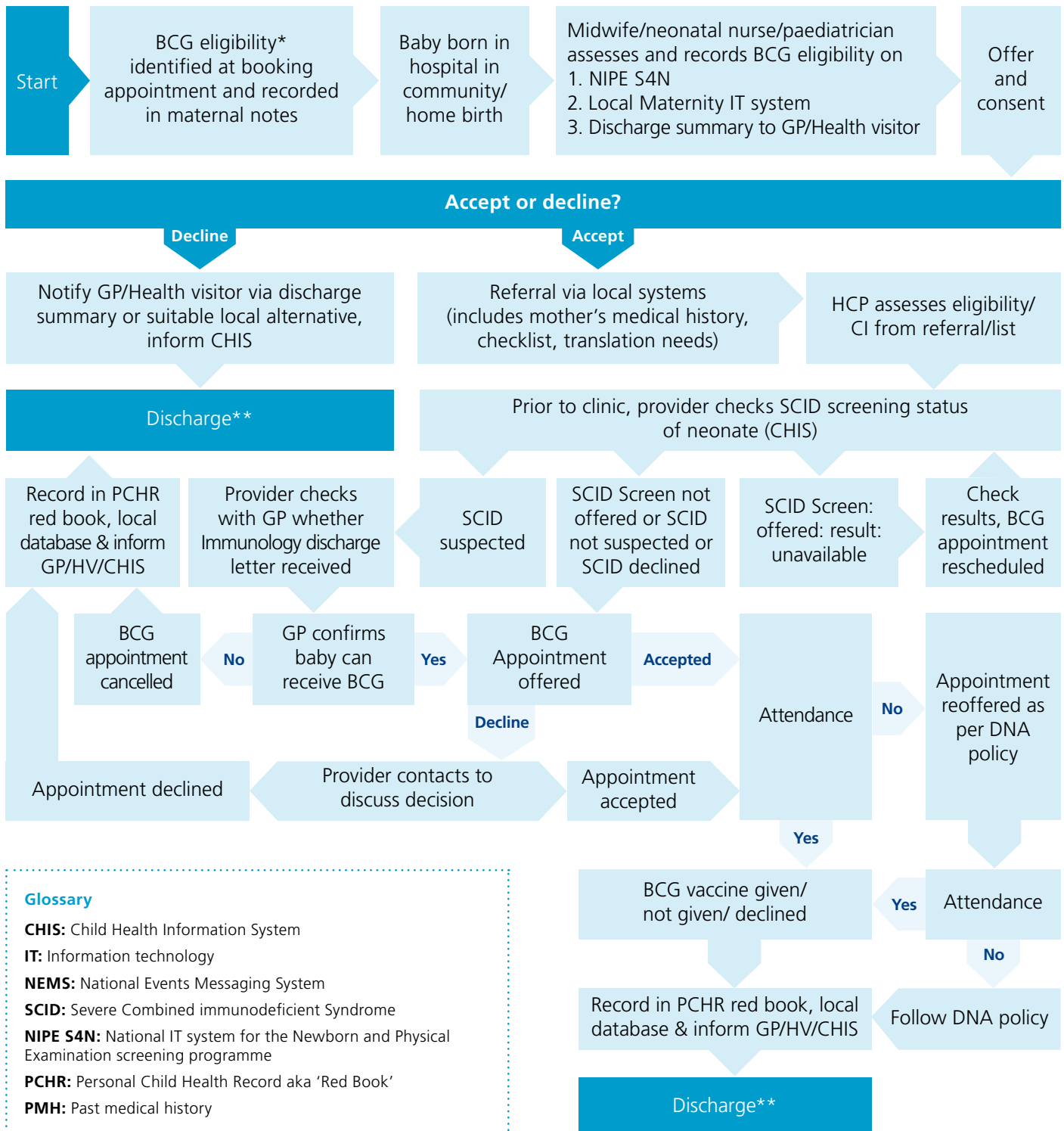




BCG patient flowchart



Glossary

- CHIS:** Child Health Information System
- IT:** Information technology
- NEMS:** National Events Messaging System
- SCID:** Severe Combined immunodeficient Syndrome
- NIPE S4N:** National IT system for the Newborn and Physical Examination screening programme
- PCHR:** Personal Child Health Record aka 'Red Book'
- PMH:** Past medical history

*BCG eligibility is described in chapter 32 of the Green Book www.gov.uk/government/publications/tuberculosis-the-green-book-chapter-32

**Follow local discharge policies