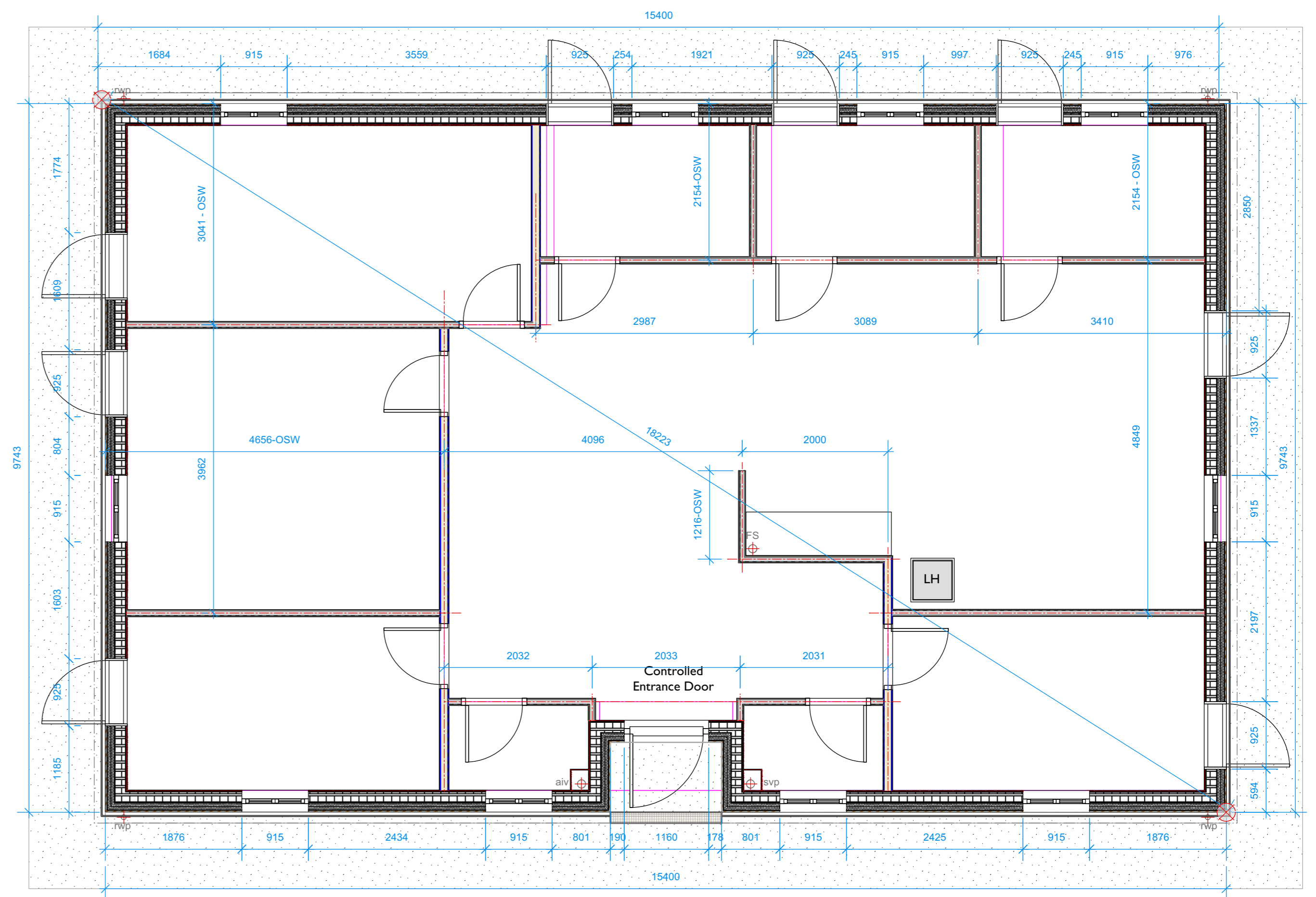


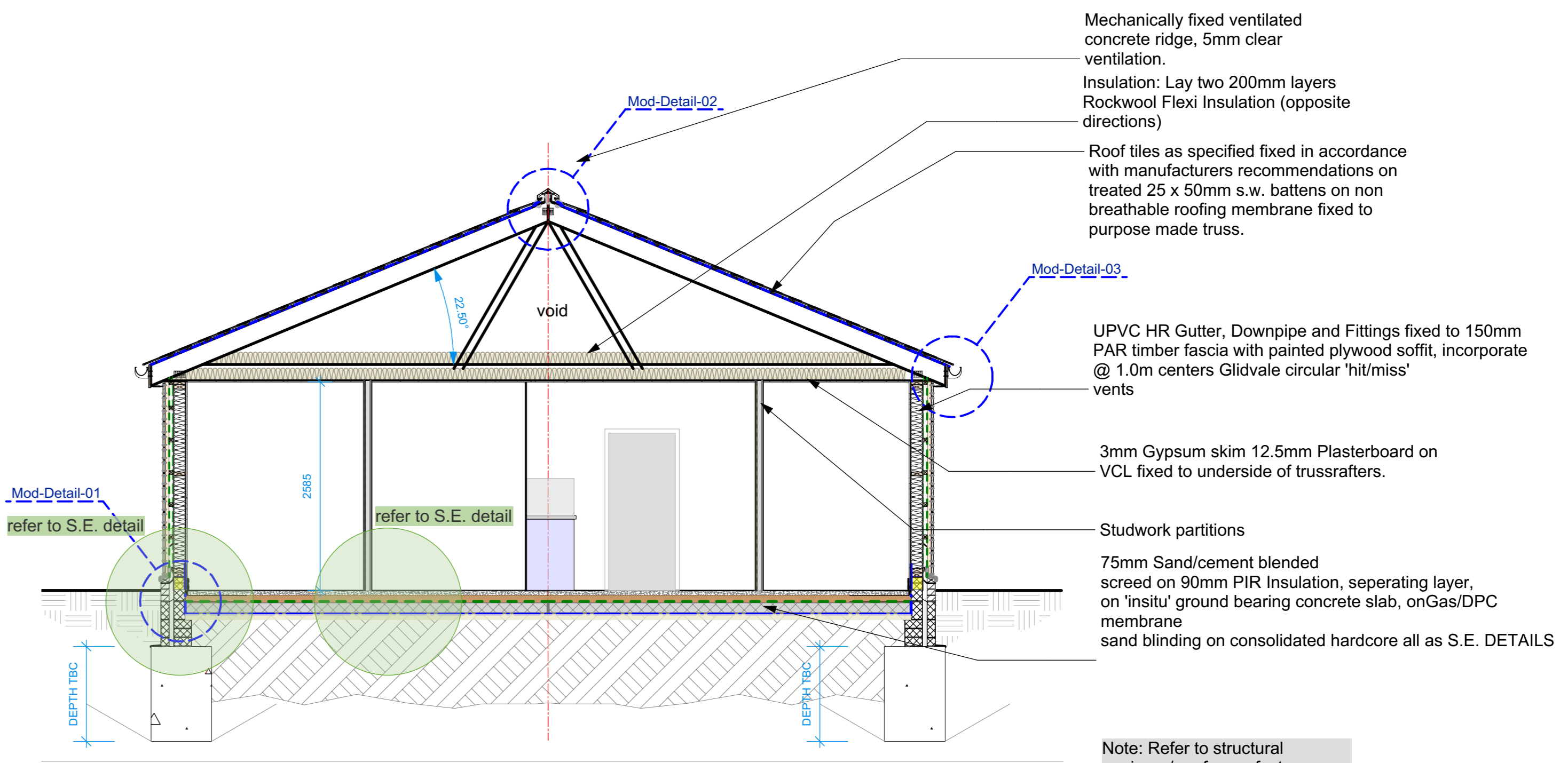
PROPOSED FLOOR PLAN - G.A. (SCALE 1:50)



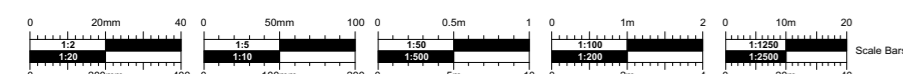
PROPOSED FLOOR PLAN - SETTING OUT (SCALE 1:50)



PROPOSED ELEVATIONS (SCALE 1:100)



CONSTRUCTION SECTION - a-a (SCALE 1:50)



No.	Date	DR/CH	Revision Notes

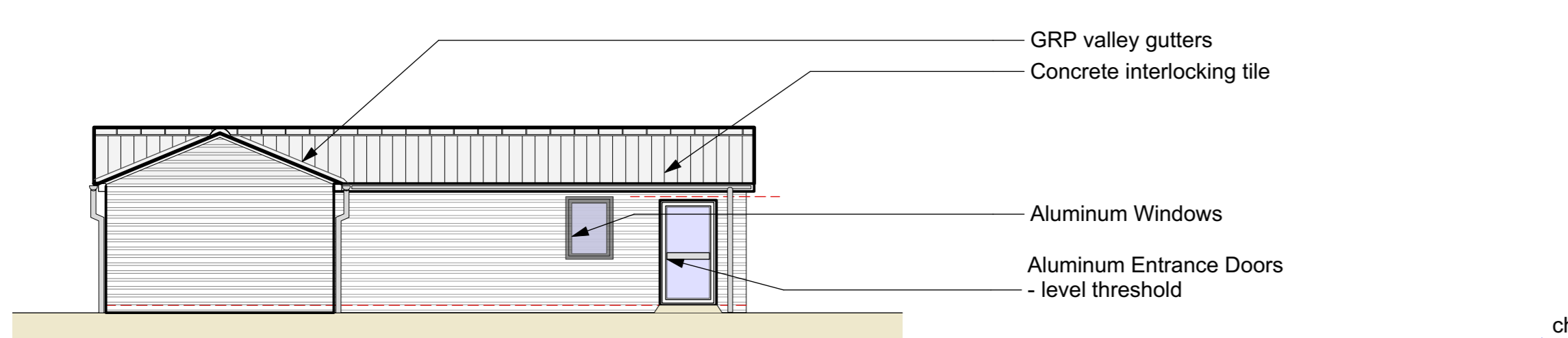
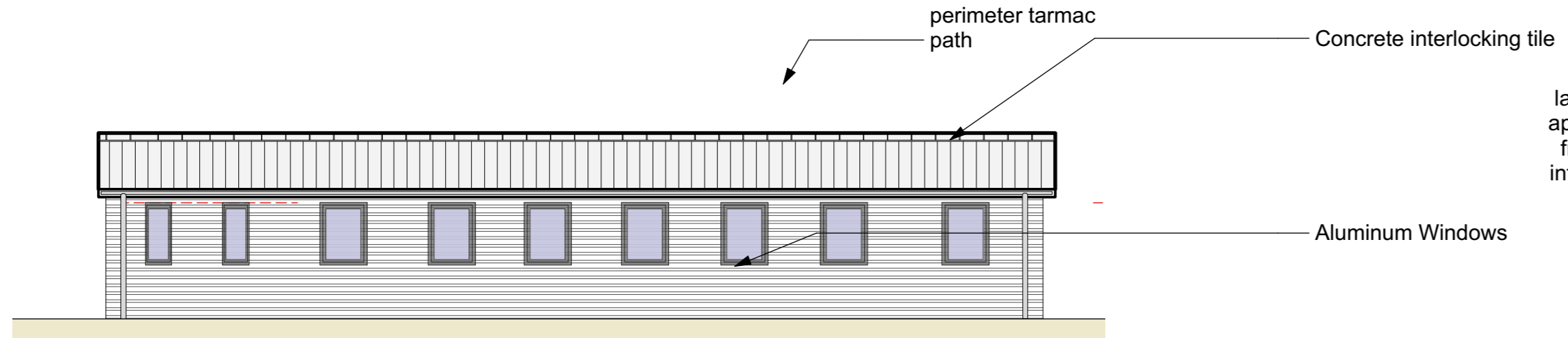
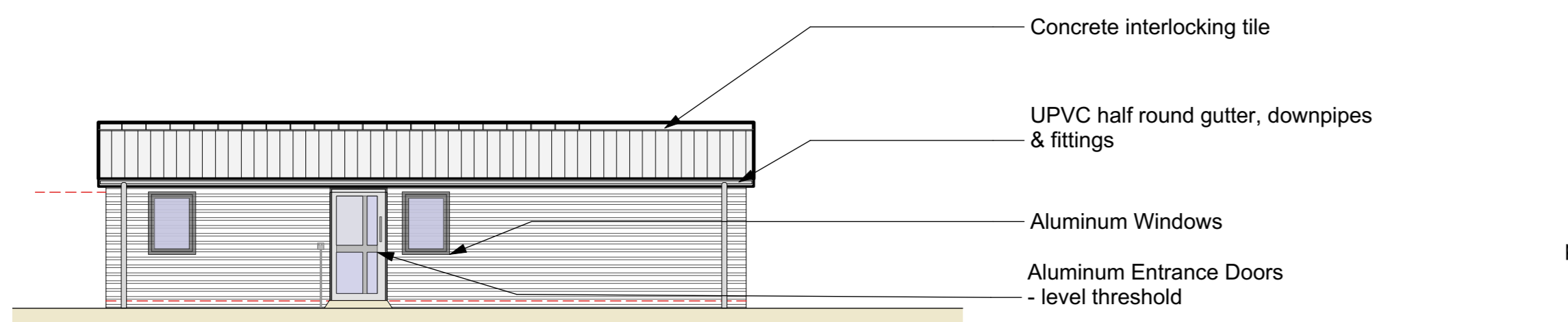
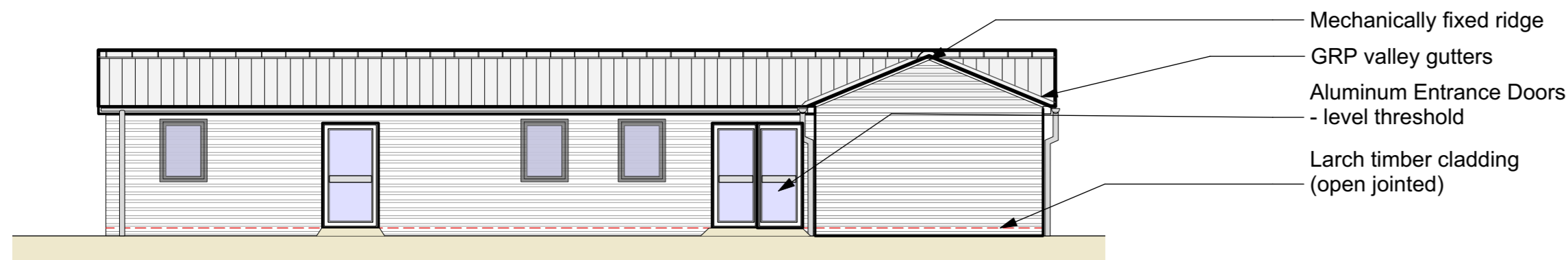
Project Title
Jerrings Hall Farm
Project Client
The Island Project
Suitability
D2 SUITABLE FOR TENDER
File Name:
Stage 4 Tech stage all mod builds.vwx

Sheet Scale
1: @ A1
Date
2020/20/20
Drawn By
NSC
Reviewed By
BC
Copyright. Check all dimensions on site.
This drawing is only to be used on the site for which designed.

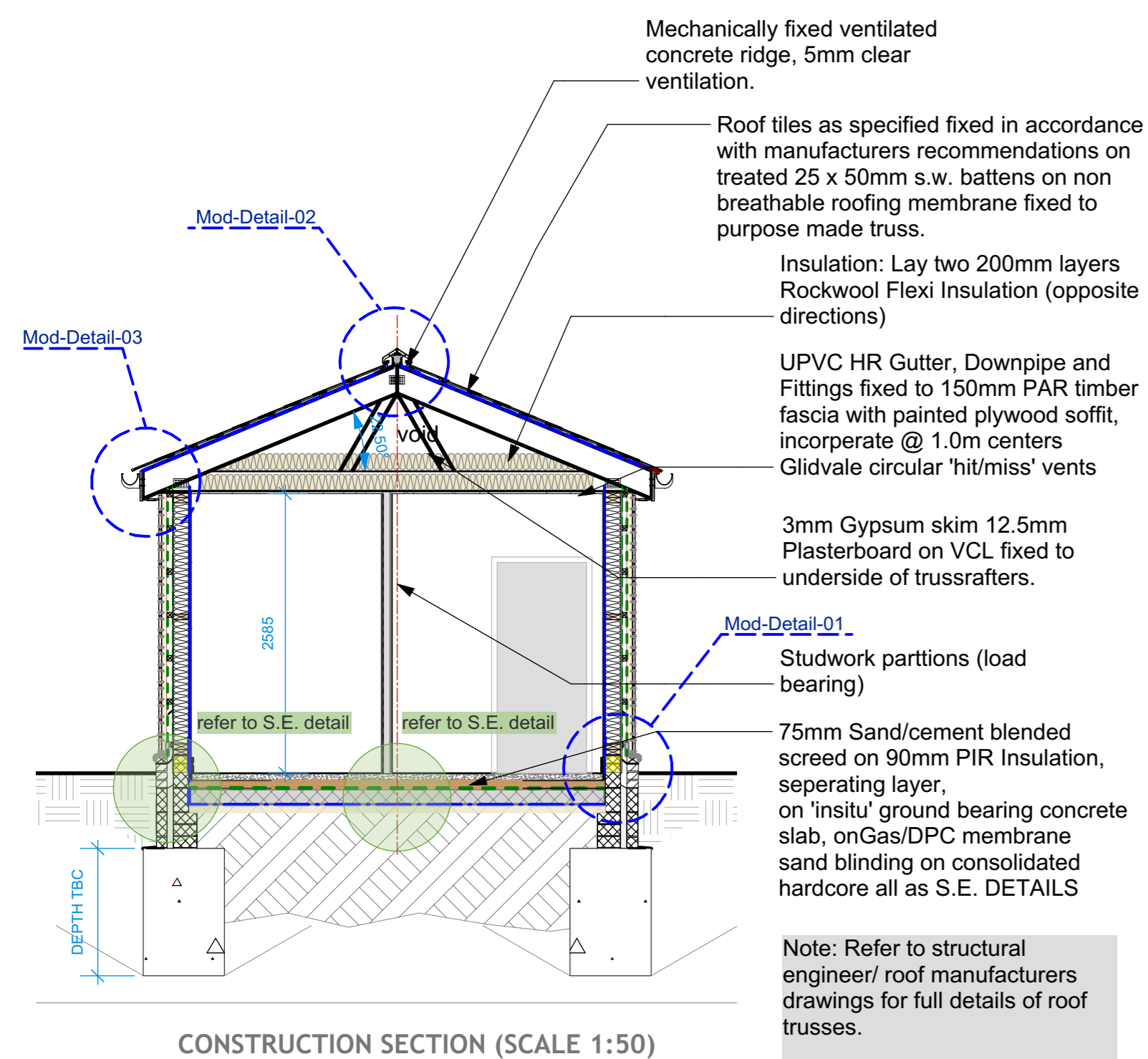
Sheet No.
1831-CMS-M1-ZZ-DR-A-0070
Sheet Title
Technical Design - Modular Building-1 (rectangle)



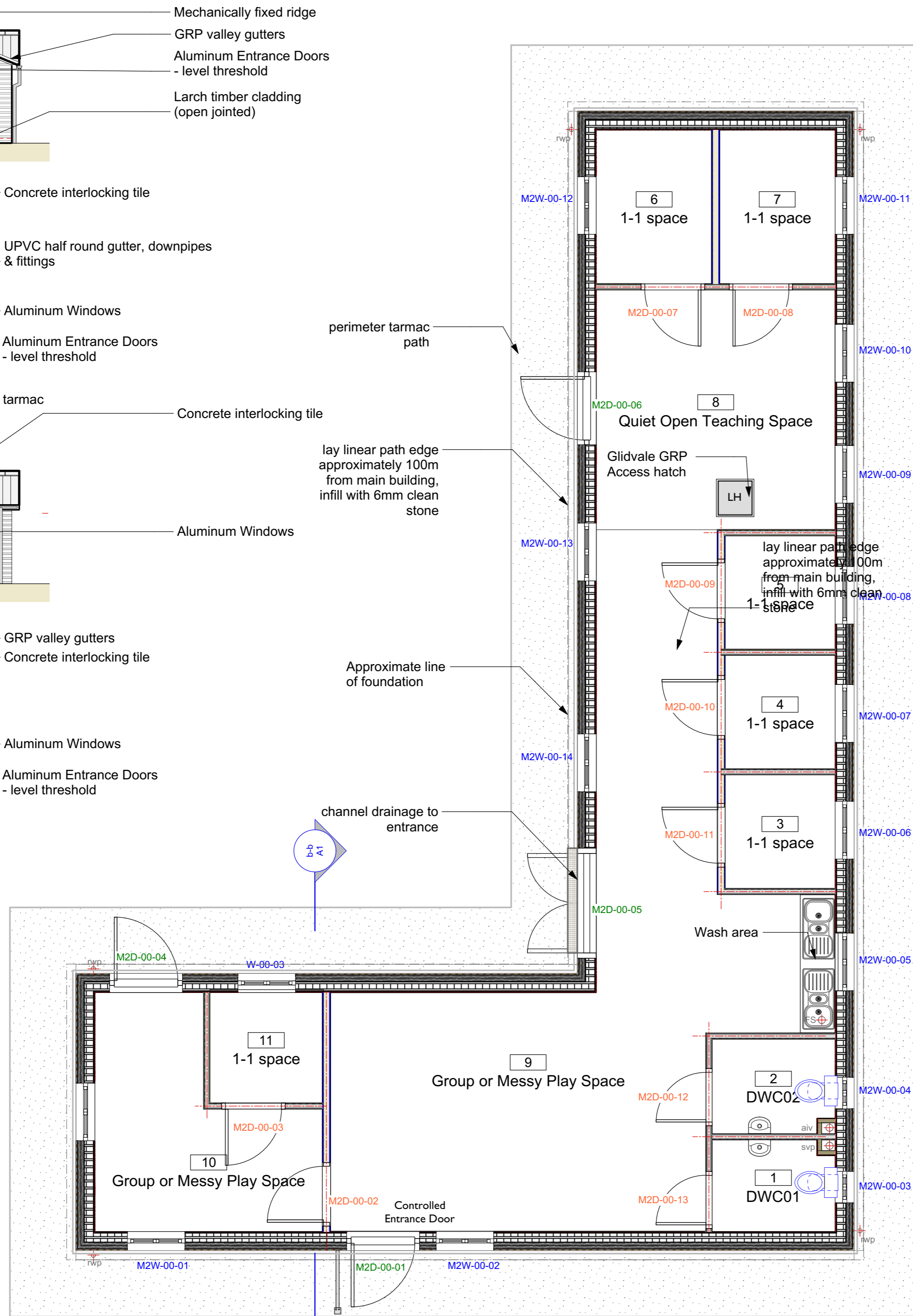
TENDER



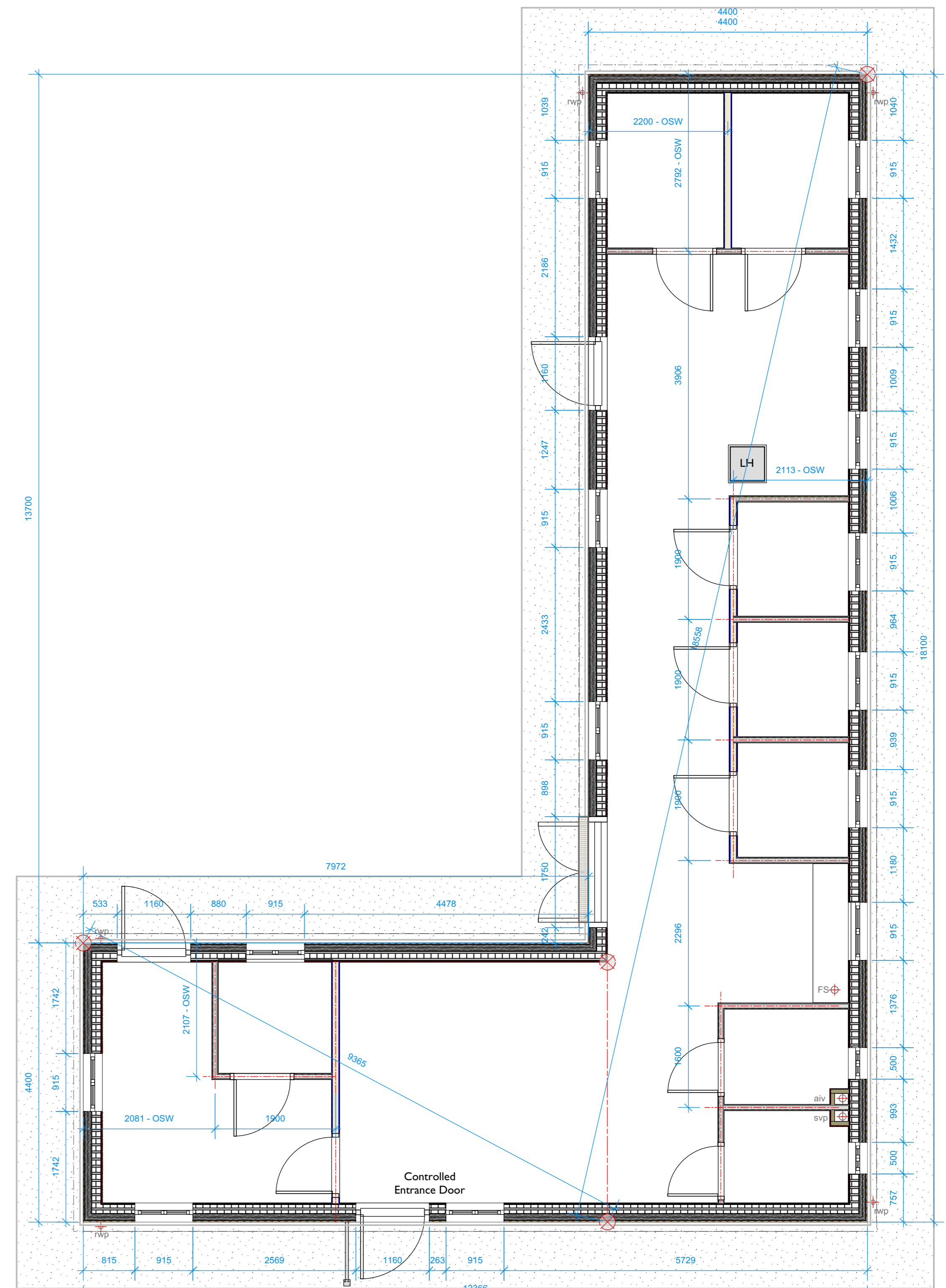
PROPOSED ELEVATIONS (SCALE 1:100)



CONSTRUCTION SECTION (SCALE 1:50)



PROPOSED FLOOR PLAN - G.A (SCALE 1:50)



PROPOSED FLOOR PLAN - SETTING OUT (SCALE 1:50)

No.	Date	DR/CH	Revision Notes

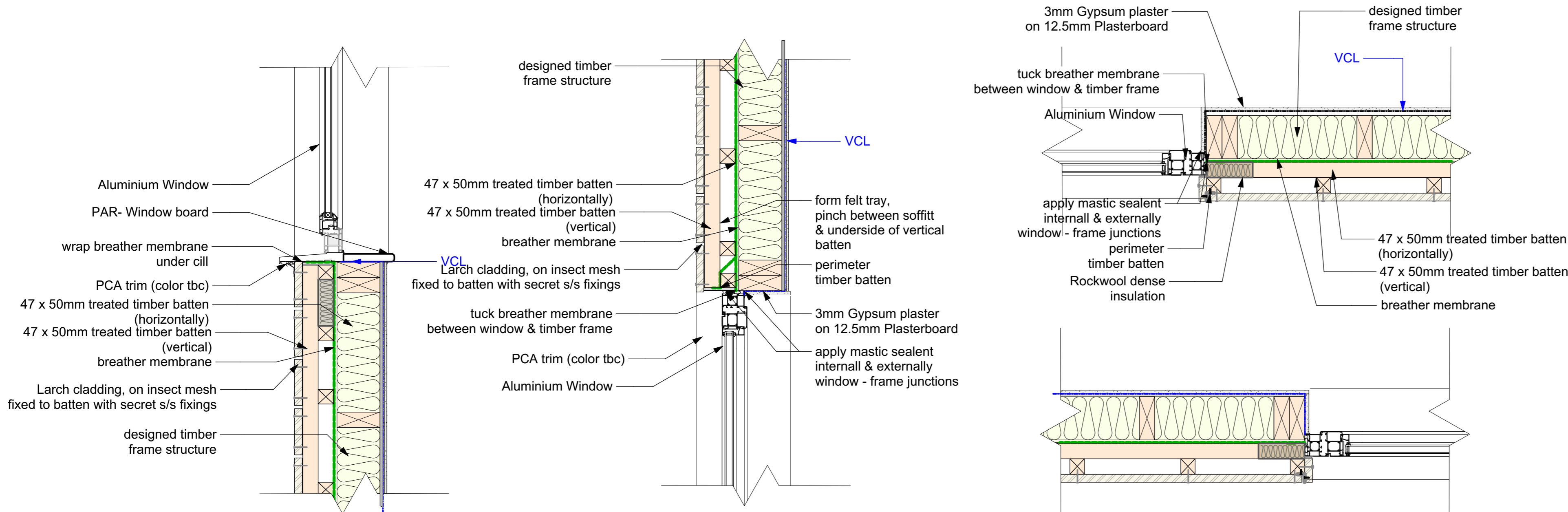
Project Title
Jerrings Hall Farm
Project Client
The Island Project
Suitability
D2 SUITABLE FOR TENDER
File Name:
Stage 4 Tech stage all mod builds.vwx

Sheet Scale
1: @ A1
Date
2020/20/20
Drawn By
NSC
Reviewed By
BC
Copyright. Check all dimensions on site.
This drawing is only to be used on the site for which designed.

Sheet No.
1831-CMS-M2-ZZ-DR-A-0071
Date
2020/20/20
Drawn By
NSC
Reviewed By
BC
Sheet Title
Technical Design - Modular Building-2 (L)
28 Martingale, Corsham, Wiltshire, SN13 0HL, Web: www.cms-group.co.uk, Tel: 01249 701333

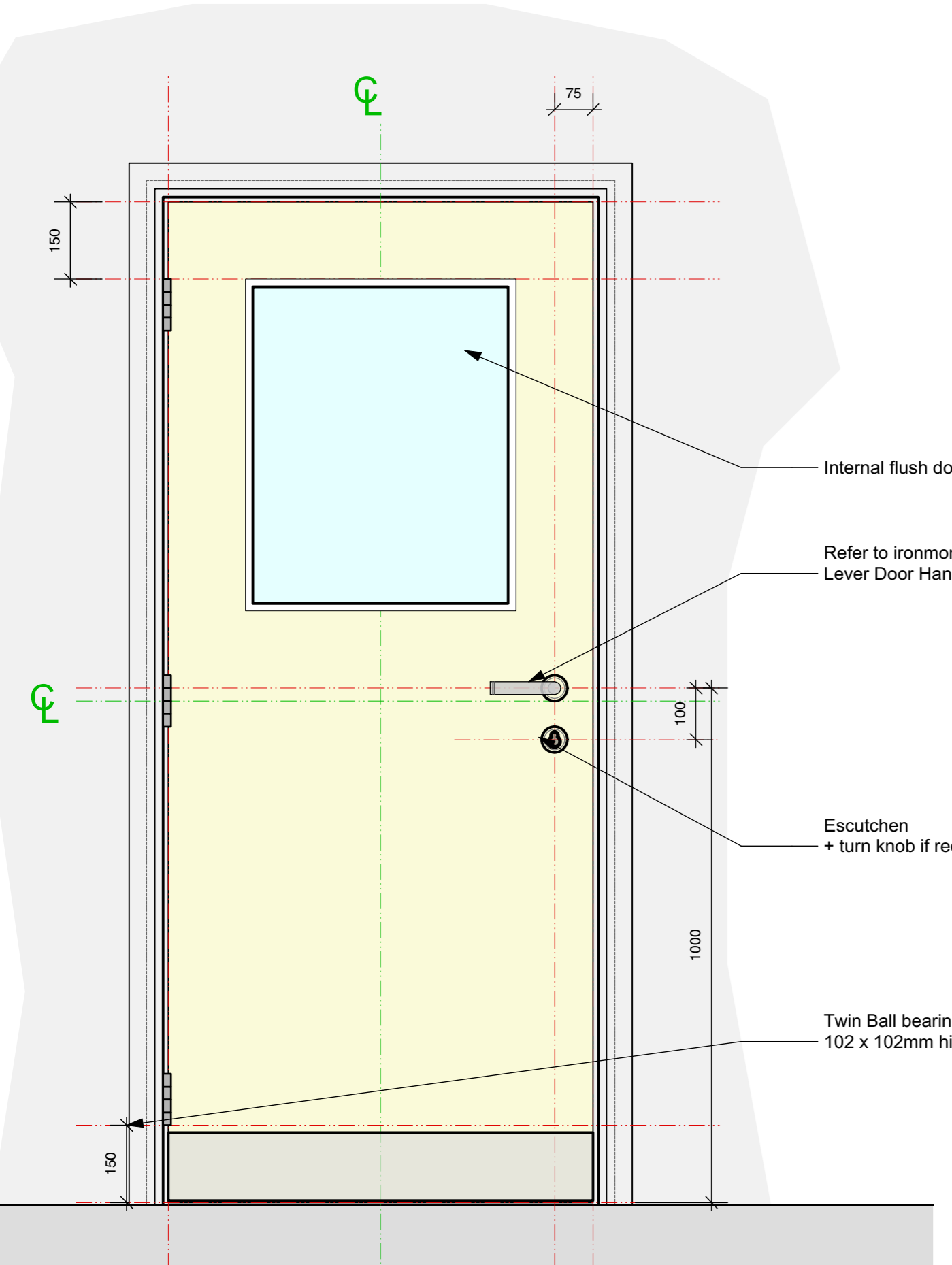
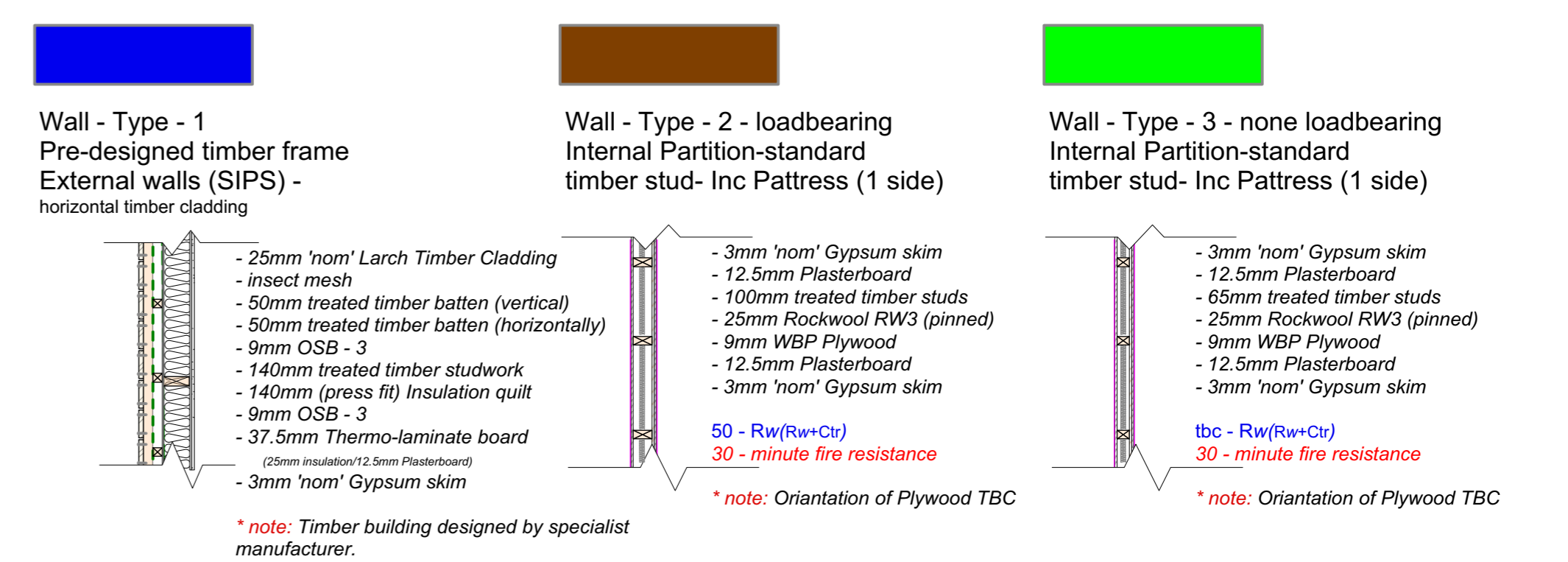
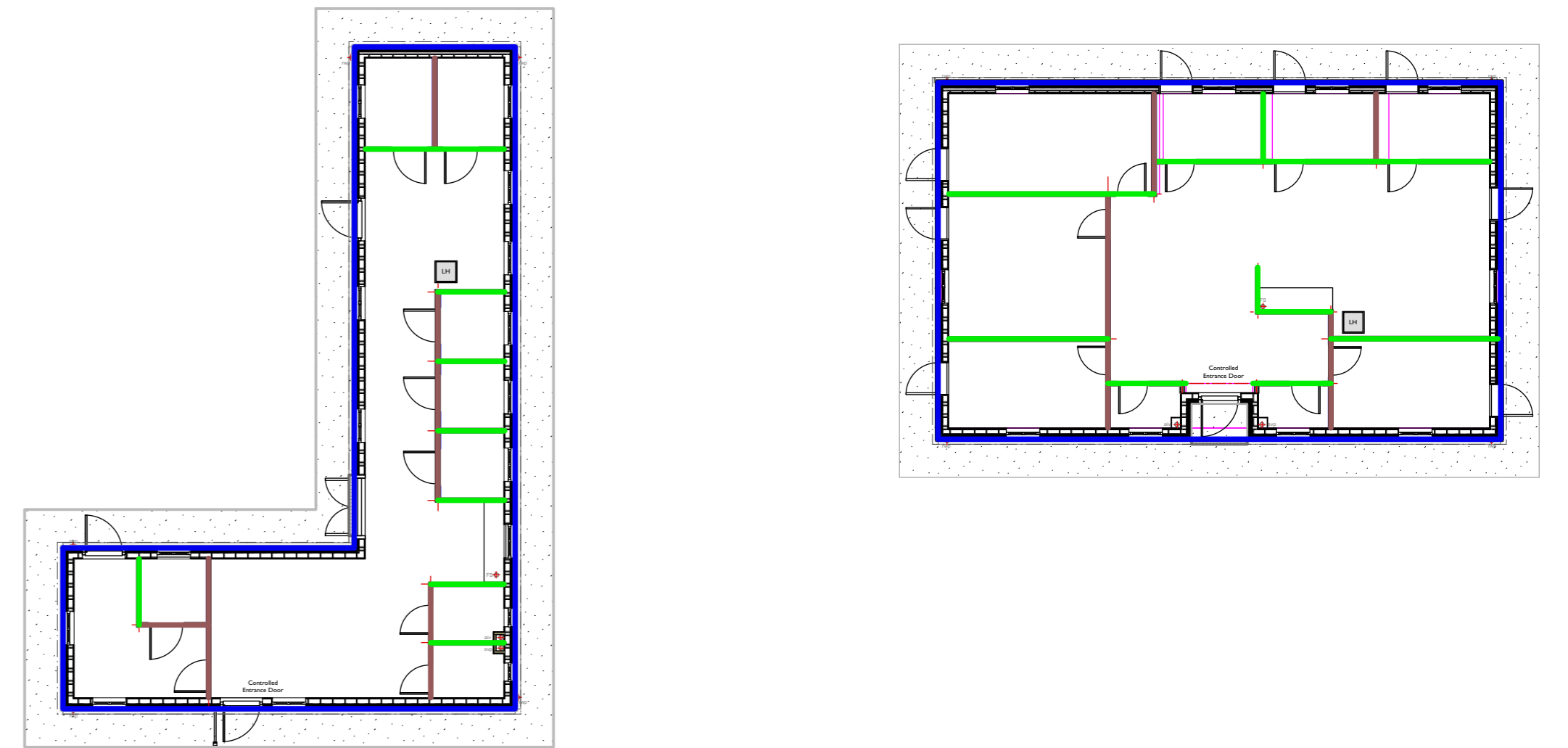


TENDER

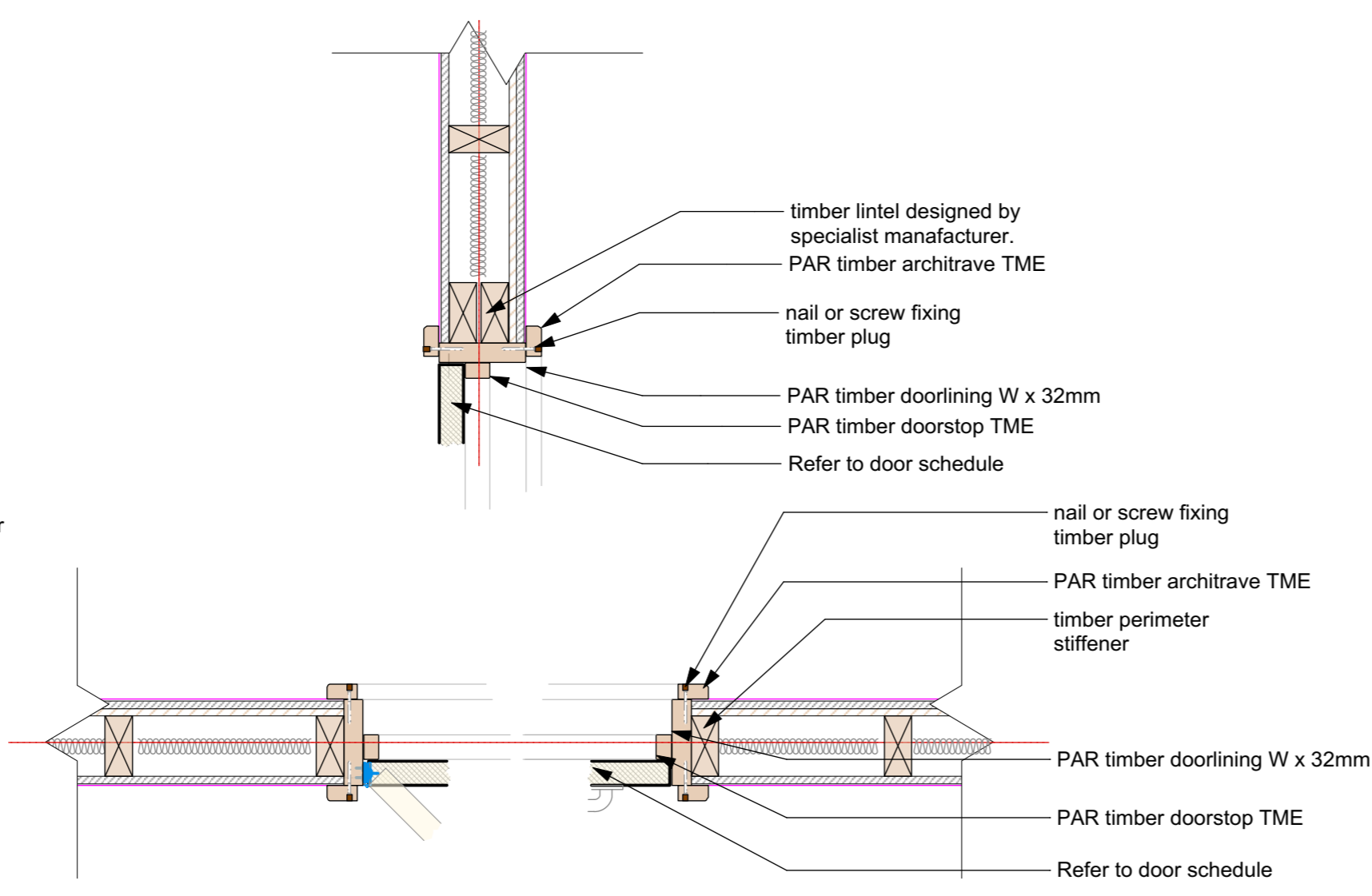


EXTERNAL HEAD & JAMB DETAILS (SCALE 1:10)

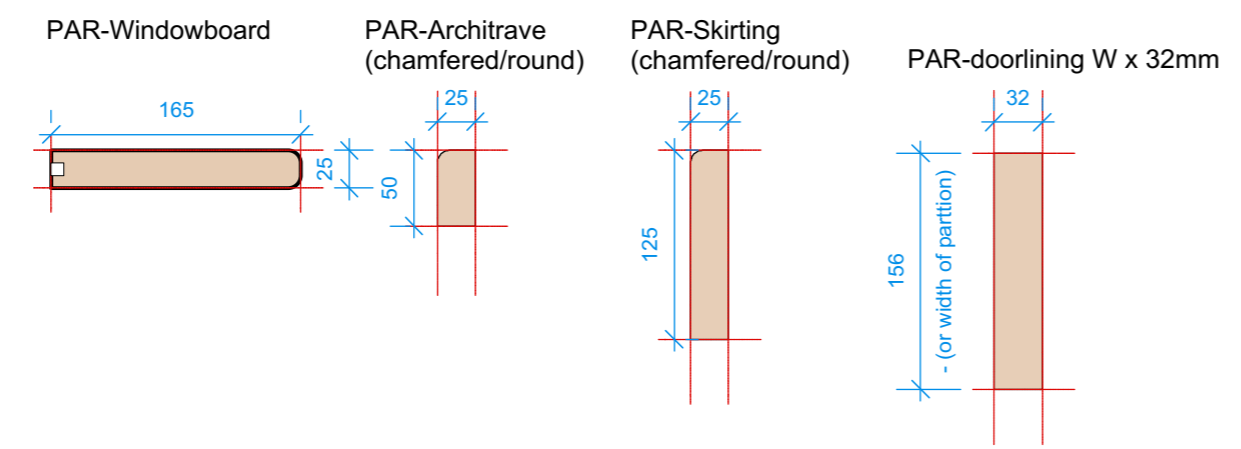
WALLTYPES (SCALE: NTS)



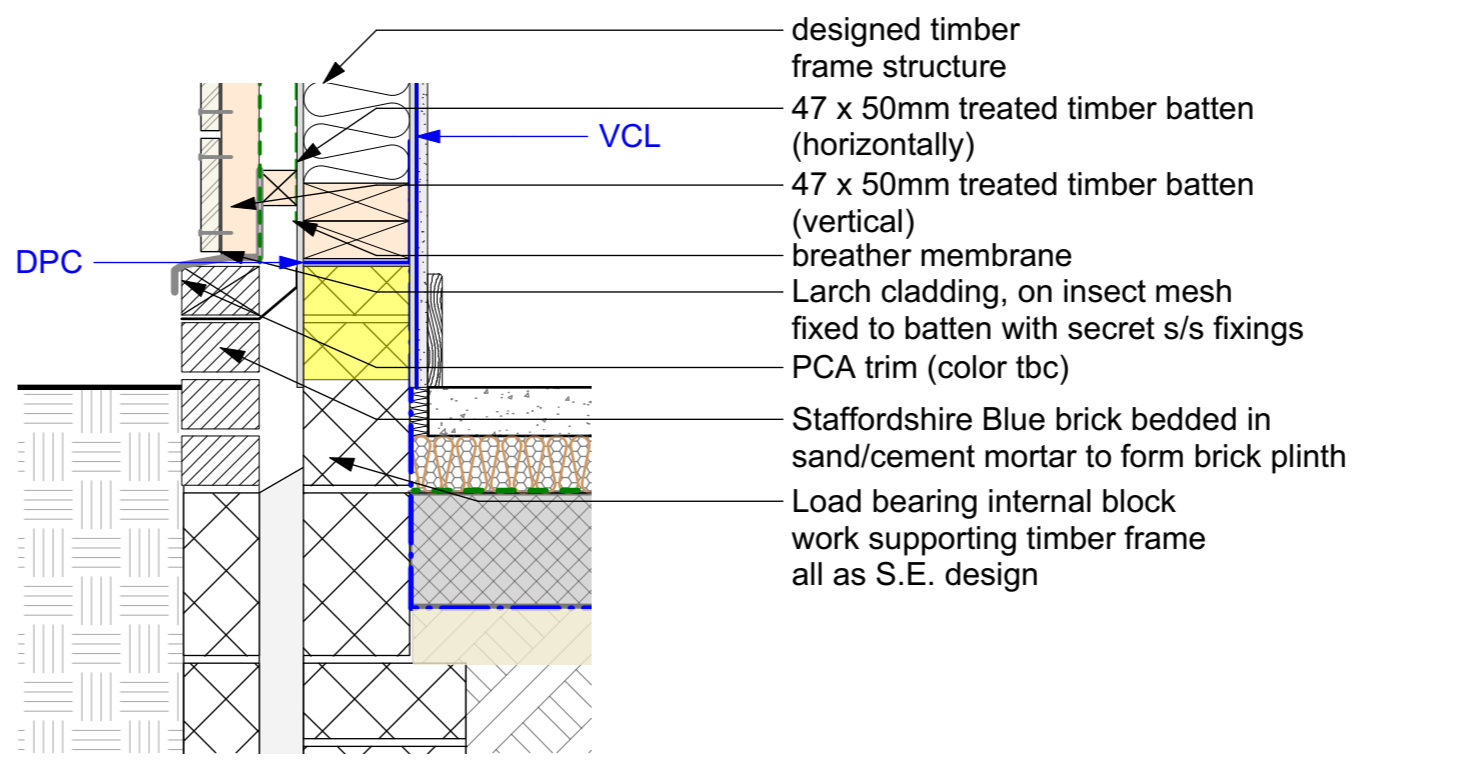
TYPICAL INTERNAL DOOR ELEVATION (SCALE:1:20)



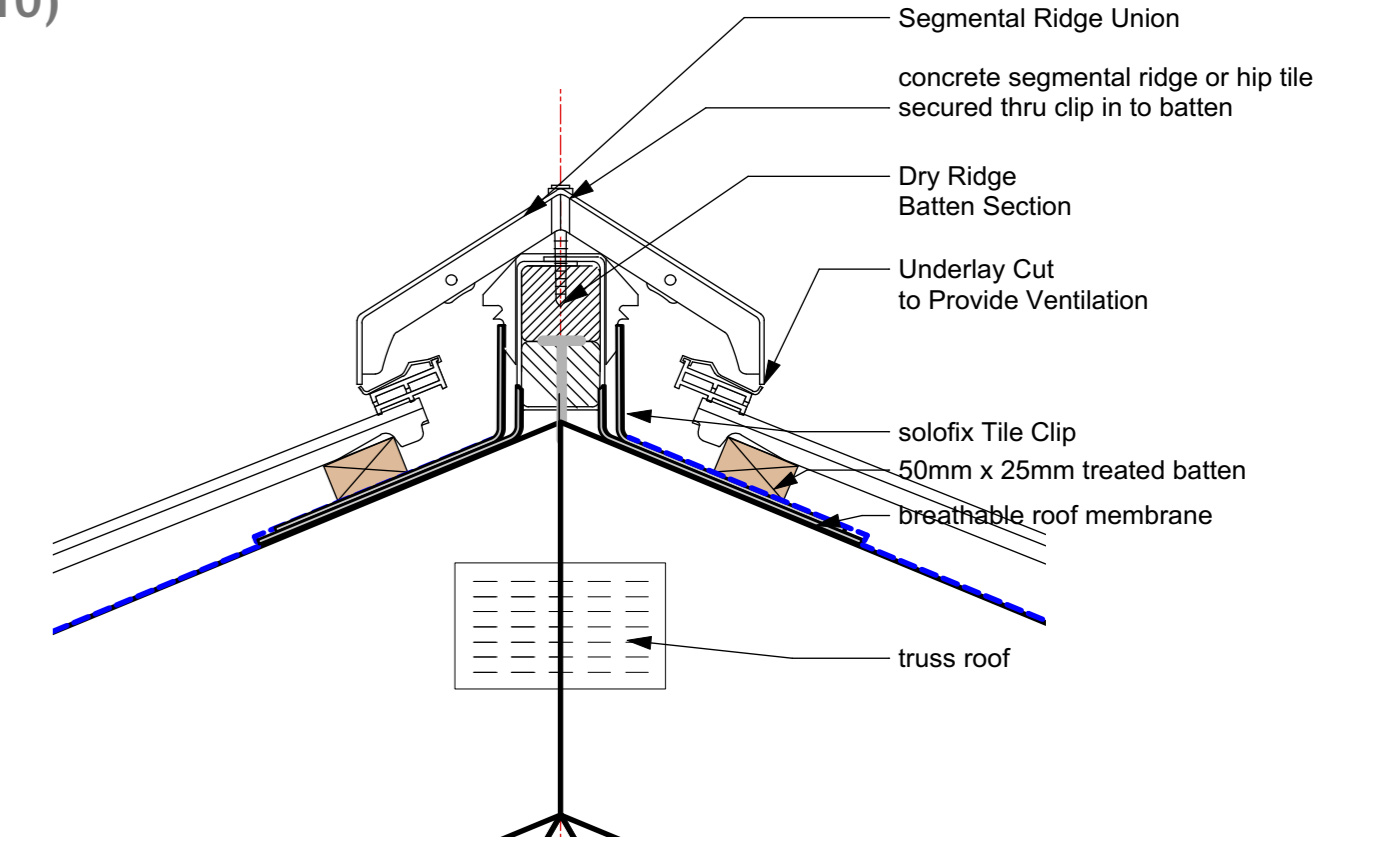
INTERNAL HEAD & JAMB DETAILS (SCALE 1:10)



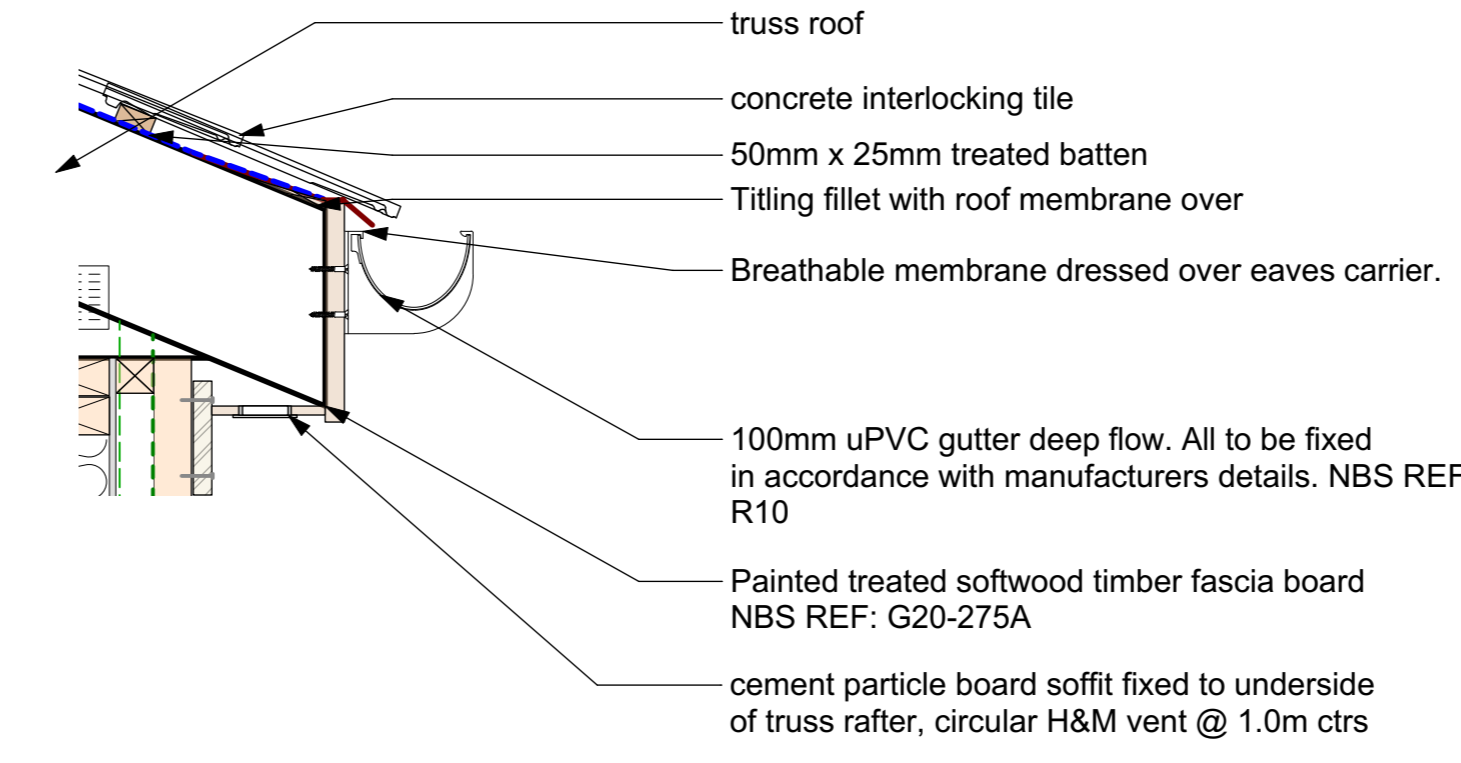
MISC-JOINERY (SCALE:1:5)



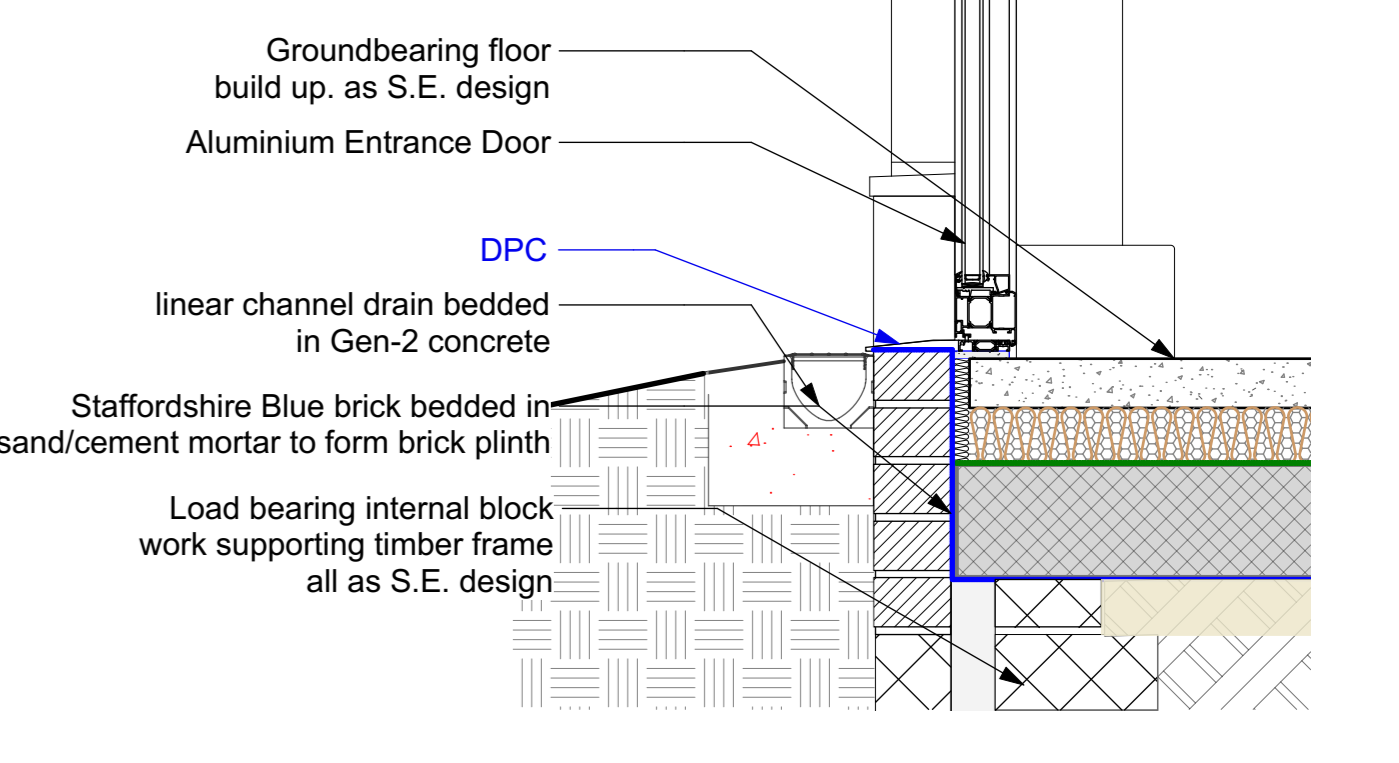
MOD DETAIL - 1 - DPC Detail (SCALE 1:10)



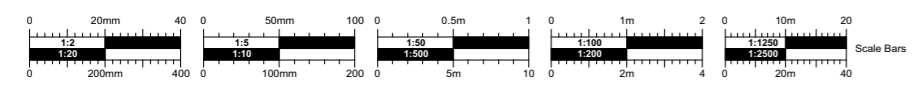
MOD DETAIL - 2 - Ridge Detail (SCALE 1:10)



MOD DETAIL - 3 - Eaves Detail (SCALE 1:10)



MOD DETAIL - 4 - Level Threshold (SCALE 1:10)



Internal Door Schedule

Ref.	Location	Door Type	S.O.			Lintel		Threshold	Frame		Architrave		Door Leaf			Fire Rating	Seals P/A	Door Stop	Fire Signage	Signage	Access Control	Closer	Hold Open	Kick Plates	Ironmongery Pack	Comments
			Width	Height	Depth	Ref.	Length		Material	Finish	Material	Finish	Material	Finish	Width											
M1D-00-01	M1-00-10 Group Play Space	T	1010	2100	TBC			?	Alu	P.C	Alu	P.C	Alu	P.C												
M1D-00-02	M1-00-09 WC01	S	910	2100	95		Timber stud	Level	Timber	Painted	Timber	Painted	Timber	Painted										I		
M1D-00-03	M1-00-03 1-1 Space	R	1010	2100	130		Timber stud	Level	Timber	Painted	Timber	Painted	Timber	Painted								●			C	
M1D-00-04	M1-00-03 1-1 Space	T	914	2100	TBC			?	Alu	P.C	Alu	P.C	Alu	P.C												
M1D-00-05	M1-00-02 1-1 Space	R	1010	2100	130		Timber stud	Level	Timber	Painted	Timber	Painted	Timber	Painted								●			C	
M1D-00-06	M1-00-02 1-1 Space	T	914	2100	TBC			?	Alu	P.C	Alu	P.C	Alu	P.C												
M1D-00-07	M1-00-01 1-1 Space	R	1010	2100	130		Timber stud	Level	Timber	Painted	Timber	Painted	Timber	Painted								●			C	
M1D-00-08	M1-00-01 1-1 Space	T	914	2100	TBC			?	Alu	P.C	Alu	P.C	Alu	P.C												
M1D-00-09	M1-00-04 Office	R	1010	2100	95		Timber stud	Level	Timber	Painted	Timber	Painted	Timber	Painted								●			C	
M1D-00-10	M1-00-04 1-1 Space	T	914	2100	TBC			?	Alu	P.C	Alu	P.C	Alu	P.C												
M1D-00-11	M1-00-05 Office	R	1010	2100	95		Timber stud	Level	Timber	Painted	Timber	Painted	Timber	Painted								●			C	
M1D-00-12	M1-00-05 1-1 Space	T	914	2100	TBC			?	Alu	P.C	Alu	P.C	Alu	P.C												
M1D-00-13	M1-00-06 Office	R	1010	2100	95		Timber stud	Level	Timber	Painted	Timber	Painted	Timber	Painted								●			C	
M1D-00-14	M1-00-06 1-1 Space	T	914	2100	TBC			?	Alu	P.C	Alu	P.C	Alu	P.C												
M1D-00-15	M1-00-10 Group Play Space	T	914	2100	TBC			?	Alu	P.C	Alu	P.C	Alu	P.C												
M1D-00-16	M1-00-07 1-1 Space	R	1010	2100	130		Timber stud	Level	Timber	Painted	Timber	Painted	Timber	Painted								●			C	
M1D-00-17	M1-00-07 1-1 Space	T	914	2100	TBC			?	Alu	P.C	Alu	P.C	Alu	P.C												
M1D-00-18	M1-00-08 WC02	S	910	2100	95		Timber stud	Level	Timber	Painted	Timber	Painted	Timber	Painted											I	


To be read in conjunction with:
 - NBS Specification.
 - Drawing 0103 Internal Door Types.

Notes:
 - Escutcheons to all locks.
 - Fire rated doors to have Smoke & Intumescent seals.
 - Seals
 P - Privacy A - Acoustic ● - Both

- Signage
 FDKC - Fire Door Keep Clear.
 FDKS - Fire Door Keep Shut.
 FDKL - Fire Door Keep Locked.
 FEKC - Fire Exit Keep Clear

All glazing to be toughened and laminated.

TENDER

No. Date Dr/Ch Revision Notes	Project Title Jerrings Hall Farm Project Client The Island Project Suitability Code - Description S4 SUITABLE FOR STAGE APPROVAL	Sheet Scale: NTS Date: 2020/02/07 Drawn By: BC Reviewed By: PR Copyright. Check all dimensions on site. This drawing is only to be used on the site for which designed.	Sheet No. Project ID - Originator - Volume - Level - Type - Role - Number 1831-CMS-M1-XX-SH-A-4003 Sheet Title Modular 1 Building Door Schedule 26 Martingate, Corsham, Wiltshire, SN13 0HL, Web: www.cms-group.co, Tel: 01249 701333	Rev <div style="border: 1px solid black; width: 20px; height: 20px; margin: auto;"></div>	
-------------------------------	--	--	--	--	---

Door Schedule

Ref.	Location	Door Type	S.O.			Lintel		Threshold	Frame		Architrave		Door Leaf				Fire Rating	Seals P/A	Door Stop	Fire Signage	Signage	Access Control	Closer	Hold Open	Kick Plates	Ironmongery Pack	Comments
			Width	Height	Depth	Ref.	Length		Material	Finish	Material	Finish	Material	Finish	Width	Height											
M2D-00-01	M1-00-09 Group Play Space	T	1010	2100	300			?	Alu	P.C	Alu	P.C	Alu	P.C													
M2D-00-02	M1-00-10 Group Play Space	V	1010	2100	130		Timber stud	Level	Timber	Painted	Timber	Painted	Timber	Painted													
M2D-00-03	M1-00-11 1-1 Space	R	1010	2100	100		Timber stud	Level	Timber	Painted	Timber	Painted	Timber	Painted									●			C	
M2D-00-04	M1-00-10 Group Play Space	T	1010	2100	300			?	Alu	P.C	Alu	P.C	Alu	P.C													
M2D-00-05	M1-00-09 Group Play Space	U	1750	2100	300			?	Alu	P.C	Alu	P.C	Alu	P.C													
M2D-00-06	M1-00-08 Quiet Teaching Space	T	1010	2100	300			?	Alu	P.C	Alu	P.C	Alu	P.C													
M2D-00-07	M1-00-06 1-1 Space	R	1010	2100	95		Timber stud	Level	Timber	Painted	Timber	Painted	Timber	Painted									●			C	
M2D-00-08	M1-00-07 1-1 Space	R	1010	2100	95		Timber stud	Level	Timber	Painted	Timber	Painted	Timber	Painted									●			C	
M2D-00-09	M1-00-05 1-1 Space	R	1010	2100	130		Timber stud	Level	Timber	Painted	Timber	Painted	Timber	Painted									●			C	
M2D-00-10	M1-00-04 1-1 Space	R	1010	2100	130		Timber stud	Level	Timber	Painted	Timber	Painted	Timber	Painted									●			C	
M2D-00-11	M1-00-03 1-1 Space	R	1010	2100	130		Timber stud	Level	Timber	Painted	Timber	Painted	Timber	Painted									●			C	
M2D-00-12	M1-00-02 Disabled WC 2	S	910	2100	95		Timber stud	Level	Timber	Painted	Timber	Painted	Timber	Painted												I	
M2D-00-13	M1-00-01 Disabled WC 1	S	910	2100	95		Timber stud	Level	Timber	Painted	Timber	Painted	Timber	Painted												I	


To be read in conjunction with:
 - NBS Specification.
 - Drawing 0103 Internal Door Types.

Notes:
 - Escutcheons to all locks.
 - Fire rated doors to have Smoke & Intumescent seals.
 - Seals
 P - Privacy A - Acoustic ● - Both

- Signage
 FDKC - Fire Door Keep Clear.
 FDKS - Fire Door Keep Shut.
 FDKL - Fire Door Keep Locked.
 FEKC - Fire Exit Keep Clear

All glazing to be toughened and laminated.

TENDER

No. Date Dr/Ch Revision Notes	Project Title Jerrings Hall Farm Project Client The Island Project Suitability Code - Description S4 SUITABLE FOR STAGE APPROVAL	Sheet Scale: NTS Date: 2020/02/07 Drawn By: BC Reviewed By: PR	Sheet No. Project ID - Originator - Volume - Level - Type - Role - Number 1831-CMS-M2-XX-SH-A-4004 Sheet Title Modular 2 Building Door Schedule 26 Martingate, Corsham, Wiltshire, SN13 0HL, Web: www.cms-group.co, Tel: 01249 701333	Rev <div style="border: 1px solid black; width: 20px; height: 20px; margin: 0 auto;"></div>	
-------------------------------	--	---	--	--	---

MODULAR BUILDING 1 - FINISHES SCHEDULE - items to be supplied and fitted by the contractor

Room #	NAME	FLOOR COVERING	WALLS	CEILINGS	SKIRTING / ARCHITRAVE	OTHERS
1	1-1 Space	Altro Wood safety - Vintage Cherry colour tbc	Dulux trade to colour match - F&B Skimming Stone	Painted Dulux White	Dulux trade to colour match - F&B Dove Tale	Door colour Dulux trade to colour match - F&B Dove Tale
2	1-1 Space	Altro Wood safety - Vintage Cherry colour tbc	Dulux trade to colour match - F&B Skimming Stone	Painted Dulux White	Dulux trade to colour match - F&B Dove Tale	Door colour Dulux trade to colour match - F&B Dove Tale
3	1-1 Space	Altro Wood safety - Vintage Cherry colour tbc	Dulux trade to colour match - F&B Skimming Stone	Painted Dulux White	Dulux trade to colour match - F&B Dove Tale	Door colour Dulux trade to colour match - F&B Dove Tale
4	1-1 Space	Altro Wood safety - Vintage Cherry colour tbc	Dulux trade to colour match - F&B Skimming Stone	Painted Dulux White	Dulux trade to colour match - F&B Dove Tale	Door colour Dulux trade to colour match - F&B Dove Tale
5	1-1 Space	Altro Wood safety - Vintage Cherry colour tbc	Dulux trade to colour match - F&B Skimming Stone	Painted Dulux White	Dulux trade to colour match - F&B Dove Tale	Door colour Dulux trade to colour match - F&B Dove Tale
6	1-1 Space	Altro Wood safety - Vintage Cherry colour tbc	Dulux trade to colour match - F&B Skimming Stone	Painted Dulux White	Dulux trade to colour match - F&B Dove Tale	Door colour Dulux trade to colour match - F&B Dove Tale
7	1-1 Space	Altro Wood safety - Vintage Cherry colour tbc	Dulux trade to colour match - F&B Skimming Stone	Painted Dulux White	Dulux trade to colour match - F&B Dove Tale	Door colour Dulux trade to colour match - F&B Dove Tale
8	WC02	Altro Wood safety - Vintage Cherry colour tbc	Dulux trade to colour match - F&B Skimming Stone	Painted Dulux White	Set on skirting	Door colour Dulux trade to colour match - F&B Dove Tale Verticle Blind - tbc Altro White Rock - White above basin
9	WC01	Altro Wood safety - Vintage Cherry colour tbc	Dulux trade to colour match - F&B Skimming Stone	Painted Dulux White	Set on skirting	Door colour Dulux trade to colour match - F&B Dove Tale Verticle Blind - tbc Altro White Rock - White above basin
10	Group/Messy Play Space	Altro Wood safety - Vintage Cherry colour tbc	Dulux trade to colour match - F&B Skimming Stone	Painted Dulux White	Dulux trade to colour match - F&B Dove Tale	Door colour Dulux trade to colour match - F&B Dove Tale Howdens Kitchen units - Greenwich Cashmere Worktop - Howdens Matt Cream Stone Effect Laminate with 70mm upstand Handles – Nickle Bar -237mm

PLANNING

No. Date Dr/Ch Revision Notes

Project Title
Jerrings Hall Farm
Project Client
The Island Project
Suitability
Code - Description
S4 SUITABLE FOR STAGE APPROVAL

Sheet Scale: NTS @ A3
Date: 2020/02/07
Drawn By: BC
Reviewed By: PR

Copyright. Check all dimensions on site.
This drawing is only to be used on the site for which designed.

Sheet No.
Project ID - Originator - Volume - Level - Type - Role - Number
1831-CMS-M1-XX-SH-A-4020
Sheet Title
Finishes Schedules Mod 1

26 Martingate, Corsham, Wiltshire, SN13 0HL, Web: www.cms-group.co, Tel: 01249 701333



MODULAR BUILDING 2 - FINISHES SCHEDULE - items to be supplied and fitted by the contractor

Room #	NAME	FLOOR COVERING	WALLS	CEILINGS	SKIRTING / ARCHITRAVE	OTHERS
1	WC01	Altro Wood safety - Vintage Cherry colour tbc	Dulux trade to colour match - F&B Skimming Stone	Painted Dulux White	Set on skirting	Door colour Dulux trade to colour match - F&B Dove Tale Verticle Blind - tbc Altro White Rock - White above basin
2	WC02	Altro Wood safety - Vintage Cherry colour tbc	Dulux trade to colour match - F&B Skimming Stone	Painted Dulux White	Set on skirting	Door colour Dulux trade to colour match - F&B Dove Tale Verticle Blind - tbc Altro White Rock - White above basin
3	1-1 Space	Altro Wood safety - Vintage Cherry colour tbc	Dulux trade to colour match - F&B Skimming Stone	Painted Dulux White	Dulux trade to colour match - F&B Dove Tale	Door colour Dulux trade to colour match - F&B Dove Tale
4	1-1 Space	Altro Wood safety - Vintage Cherry colour tbc	Dulux trade to colour match - F&B Skimming Stone	Painted Dulux White	Dulux trade to colour match - F&B Dove Tale	Door colour Dulux trade to colour match - F&B Dove Tale
5	1-1 Space	Altro Wood safety - Vintage Cherry colour tbc	Dulux trade to colour match - F&B Skimming Stone	Painted Dulux White	Dulux trade to colour match - F&B Dove Tale	Door colour Dulux trade to colour match - F&B Dove Tale
6	1-1 Space	Altro Wood safety - Vintage Cherry colour tbc	Dulux trade to colour match - F&B Skimming Stone	Painted Dulux White	Dulux trade to colour match - F&B Dove Tale	Door colour Dulux trade to colour match - F&B Dove Tale
7	1-1 Space	Altro Wood safety - Vintage Cherry colour tbc	Dulux trade to colour match - F&B Skimming Stone	Painted Dulux White	Dulux trade to colour match - F&B Dove Tale	Door colour Dulux trade to colour match - F&B Dove Tale
8	Quiet Open Teaching Space	Altro Wood safety - Vintage Cherry colour tbc	Dulux trade to colour match - F&B Skimming Stone	Painted Dulux White	Dulux trade to colour match - F&B Dove Tale	Door colour Dulux trade to colour match - F&B Dove Tale
9	Group/Messy Play Space	Altro Wood safety - Vintage Cherry colour tbc	Dulux trade to colour match - F&B Skimming Stone	Painted Dulux White	Dulux trade to colour match - F&B Dove Tale	Door colour Dulux trade to colour match - F&B Dove Tale Howdens Kitchen units - Greenwich Cashmere Worktop - Howdens Matt Cream Stone Effect Laminate with 70mm upstand Handles – Nickle Bar -237mm
10	Group/Messy Play Space	Altro Wood safety - Vintage Cherry colour tbc	Dulux trade to colour match - F&B Skimming Stone	Painted Dulux White	Dulux trade to colour match - F&B Dove Tale	Door colour Dulux trade to colour match - F&B Dove Tale
11	1-1 Space	Altro Wood safety - Vintage Cherry colour tbc	Dulux trade to colour match - F&B Skimming Stone	Painted Dulux White	Dulux trade to colour match - F&B Dove Tale	Door colour Dulux trade to colour match - F&B Dove Tale

PLANNING

No. Date Dr/Ch Revision Notes

Project Title
Jerrings Hall Farm
Project Client
The Island Project
Suitability
Code - Description
S4 SUITABLE FOR STAGE APPROVAL

Sheet Scale: NTS @ A3
Date: 2020/02/07
Drawn By: BC
Reviewed By: PR

Copyright. Check all dimensions on site.
This drawing is only to be used on the site for which designed.

Sheet No.
Project ID - Originator - Volume - Level - Type - Role - Number
1831-CMS-M2-XX-SH-A-4021
Sheet Title
Finishes Schedules Mod 2

26 Martingate, Corsham, Wiltshire, SN13 0HL, Web: www.cms-group.co, Tel: 01249 701333

Rev




MODULAR BUILDING 1 - SANITARY SCHEDULE - items to be supplied and fitted by the contractor

ITEM	TOTAL	SIZE (mm)	TYPE	MOUNTING HEIGHTS (from FFL (mm))	ROOM
WCS AND CISTERNS	2	N/A	Contour 21 Schools 355 Close Coupled WC Suite	Refer to detail	WC01, WC02
WHB AND MIXER TAP	2	N/A	Portman 21 50cm Washbasin S2311(01) Portman 21 washbasin 50cm, 1 taphole with overflow, no chainstay hole	Refer to detail	WC01, WC02
KITCHEN SINK AND MIXER TAP	1	N/A	Sandringham 1000mm Stainless Steel Kitchen Sink S0748(MY) Sandringham 1000mm stainless steel kitchen sink pack 1 1/2 bowl and drainer with single lever kitchen mixer	Refer to detail	10

MODULAR BUILDING 2 - SANITARY SCHEDULE - items to be supplied and fitted by the contractor

ITEM	TOTAL	SIZE (mm)	TYPE	MOUNTING HEIGHTS (from FFL (mm))	ROOM
WCS AND CISTERNS	2	N/A	Contour 21 Schools 355 Close Coupled WC Suite	Refer to detail	DWC01, DWC02
WHB AND MIXER TAP	2	N/A	Portman 21 50cm Washbasin S2311(01) Portman 21 washbasin 50cm, 1 taphole with overflow, no chainstay hole	Refer to detail	DWC01, DWC02
KITCHEN SINK AND MIXER TAP	2	N/A	Sandringham 1000mm Stainless Steel Kitchen Sink S0748(MY) Sandringham 1000mm stainless steel kitchen sink pack 1 1/2 bowl and drainer with single lever kitchen mixer	Refer to detail	9

PLANNING

<p>No. Date Dr/Ch Revision Notes</p>	<p>Project Title Jerrings Hall Farm Project Client The Island Project Suitability Code - Description S4 SUITABLE FOR STAGE APPROVAL</p>	<p>Sheet Scale: NTS @ A3 Date: 2020/02/07 Drawn By: BC Reviewed By: PR Copyright. Check all dimensions on site. This drawing is only to be used on the site for which designed.</p>	<p>Sheet No. Project ID - Originator - Volume - Level - Type - Role - Number 1831 - CMS - XX - XX - SH - A - 4032 Sheet Title Sanitary Schedule - Modular Buildings 26 Martingate, Corsham, Wiltshire, SN13 0HL, Web: www.cms-group.co, Tel: 01249 701333</p>	<table border="1"> <tr> <td>Rev</td> </tr> </table>	Rev	
Rev						

FIXTURES SCHEDULE - items to be supplied and fitted by the contractor

ITEM	TOTAL	SIZE (mm)	TYPE	MOUNTING HEIGHTS (from FFL (mm))	ROOM
MB-00-05 - Upper Kitchen & Dinning area (Life Skills Teaching)	1 1 1 1 1 4 2 1 1 1 1	1000 sink base unit 900 corner base unit 1000 corner base unit 300 wall unit 800 wall unit 600 wall unit Corner wall units 5820 length worktop approx. Oven Induction hob Cooker hood	Kitchen Units - Howdens Greenwich – Ivory Worktop - Howdens Matt Cream Stone Effect Laminate Upstand Handles - Nickle Bar 237mm	Refer to detail	MB-00-05
MB-01-11 - Tea point & Staff dinning	1 1 2 1 1 2 1	1000 sink base unit 1000 corner base unit 500 base units 600 base units 1000 wall unit 600 wall units 4300 length worktop approx.	Kitchen Units - Howdens Greenwich – Ivory Worktop - Howdens Matt Cream Stone Effect Laminate Upstand Handles - Nickle Bar 237mm	Refer to detail	MB-01-11
MB-00-09 - Reception Tea point	1 1 1	1000 sink base unit 1150 length worktop approx. Wall shelf over. Length to suit existing opening.	Kitchen Units - Howdens Fairford – Dark Green Worktop - Grey laminate – Marble effect Handles - Pewter Cup handles	Refer to detail	MB-00-09
LB-01-03 - Dinning area Tea Point	1 1 2 1	600 base unit 1000 sink base unit 600 wall units 2235 length worktop approx.	Kitchen Units - Howdens Greenwich – Ivory Worktop - Howdens Matt Cream Stone Effect Laminate Upstand Handles - Nickle Bar 237mm	Refer to detail	LB-01-03
LB-00-03 - Kitchenette Tea Point	1 1 1 1	600 base units 1000 base unit Boiler cupboard 1721 length worktop approx.	Kitchen Units - Howdens Greenwich – Ivory Worktop - Howdens Matt Cream Stone Effect Laminate Upstand Handles - Nickle Bar 237mm	Refer to detail	LB-00-03
Protection from falling bar to windows.	10	To be measured on site	Refer to specification	Refer to detail	MB-00-03, MB-01-01, MB-01-10, MB-01-11, MB-01-13 (x2), LB-01-01 (x2), LB-01-02, LB-01-03
Window restrictor	3	N/A	Refer to specification	Refer to detail	MB-01-13, LB-01-03, AB-01-03
Timber handrail	2	To be measured on site	Refer to specification	Refer to detail	MB-00-06/MB-00-12, MB-00-03/MB-01-13
Socket cover (double)	20	N/A	Refer to specification	Existing socket height	MB-00-03 (x2), MB-00-04 (x6), AB-00-06 (x3), AB-00-08 (x5), AB-01-03 (x4)
Socket cover (single)	1	N/A	Refer to specification	Existing socket height	MB-00-04

PLANNING

No. Date Dr/Ch Revision Notes

Project Title
Jerrings Hall Farm
Project Client
The Island Project
Suitability
Code - Description
S4 SUITABLE FOR STAGE APPROVAL

Sheet Scale: NTS @ A3
Date: 2020/02/07
Drawn By: BC
Reviewed By: PR

Sheet No.
Project ID - Originator - Volume - Level - Type - Role - Number
1831-CMS-XX-XX-SH-A-4033

Sheet Title
Fixtures Schedule - Modular Buildings

26 Martingate, Corsham, Wiltshire, SN13 0HL, Web: www.cms-group.co, Tel: 01249 701333

Rev

