

Air Quality and Dust Monitoring Monthly Report – August 2021

Solihull Metropolitan Borough Council



Department for Transport

High Speed Two (HS2) Limited has been tasked by the Department for Transport (DfT) with managing the delivery of a new national high speed rail network. It is a non-departmental public body wholly owned by the DfT.

High Speed Two (HS2) Limited,
Two Snowhill
Snow Hill Queensway
Birmingham B4 6GA

Telephone: 08081 434 434

General email enquiries: HS2enquiries@hs2.org.uk

Website: www.gov.uk/hs2

A report prepared by EWCs and MWCCs on behalf of HS2 Ltd.

High Speed Two (HS2) Limited has actively considered the needs of blind and partially sighted people in accessing this document. The text will be made available in full on the HS2 website. The text may be freely downloaded and translated by individuals or organisations for conversion into other accessible formats. If you have other needs in this regard please contact High Speed Two (HS2) Limited.

© High Speed Two (HS2) Limited, 2021, except where otherwise stated.

Copyright in the typographical arrangement rests with High Speed Two (HS2) Limited.

This information is licensed under the Open Government Licence v2.0. To view this licence, visit www.nationalarchives.gov.uk/doc/open-government-licence/version/2 **OGI** or write to the Information Policy Team, The National Archives, Kew, London TW9 4DU, or e-mail: psi@nationalarchives.gsi.gov.uk. Where we have identified any third-party copyright information you will need to obtain permission from the copyright holders concerned.



Printed in Great Britain on paper containing at least 75% recycled fibre.

Monthly Summary

- 1.1.1 This Summary Report is published in fulfilment of commitments detailed in the High Speed Rail (London-West Midlands) Environmental Minimum Requirements, Annex 1: Code of Construction Practice, for the nominated undertaker to present the results of dust monitoring undertaken in Solihull Metropolitan Borough Council (SMBC) during August 2021.
- 1.1.2 Figures 1 and 2 in Appendix A present the current worksites together with the dust monitoring locations for August 2021.
- 1.1.3 This summary should be read in conjunction with the overview monitoring report available from www.gov.uk/government/collections/monitoring-the-environmental-effects-of-hs2, which highlights: the applicable standards and guidance, as well as the air quality and dust monitoring methodologies to be implemented by nominated undertakers throughout construction.
- 1.1.4 The current phase of works at Sublot 2B3 within Solihull Metropolitan Borough Council, commenced in September 2020 and is expected to be completed by 2026. The Sublot 2B3 works comprises several construction assets including: Balsall Common Viaduct, Lavender Hall Embankment, Park Lane Cutting, Lavender Hall Lane Overbridge, Footpath M214 Overbridge, A452/Park Lane Roundabout, Footpath M215 Overbridge, and Bradnock ATS Compound, and include earthworks consisting of soil stripping for haul road construction, drainage pond construction and stockpiling.
- 1.1.5 Two (2) dust monitors are installed at Marsh Farm and Cherry Tree Cottage which are the nearest properties to the earthworks and haul road (at Sublot 2B3). The 2B3 area returned a medium dust risk rating for human health effects.
- 1.1.6 The current phase of works at Sublot 5S within Solihull Metropolitan Borough Council, commenced in August 2021 and are expected to be completed by November 2021. The subplot 5S works include Bickenhill Embankment and Bickenhill Cutting and current works comprise temporary excavation 10m from permanent excavation of Bickenhill Cutting asset and construction of structures platforms.
- 1.1.7 One (1) dust monitor is installed at Bickenhill Cutting worksite, approximately 120m north of Hollywell Brook, which is the closest possible monitoring location due the flood zone surrounding the brook. The 5S area returned a medium dust risk rating for ecological health effects.
- 1.1.8 Dust monitoring locations and results are presented in Appendix B, Table 2, together with line charts of monthly data from each dust monitor, in Figures 3 to 5. All continuous dust

monitoring is undertaken using indicative monitors. Despite being Environment Agency (MCERTS) certified, indicative monitors carry a higher level of uncertainty than reference monitors, and therefore cannot be strictly compared with Air Quality Standards for human health and the environment. The purpose of the monitoring undertaken is to ensure the effectiveness of the on-site mitigations.

- 1.1.9 The trigger level for PM₁₀ concentrations of 190 µg/m³, over a 1-hour period, in accordance with the updated guidance document '*Guidance on Monitoring in the Vicinity of Demolition and Construction Sites – (October 2018)*' has been applied.
- 1.1.10 There were no (0) dust trigger alerts recorded during the monitoring period (August 2021).
- 1.1.11 Data capture for dust monitor 5S001 was below 90% for the month of August 2021 as the monitor was installed on 09/08/2021.
- 1.1.12 Table 1 provides a summary of the complaint information related to dust or air quality received during the reporting period (August 2021), together with the findings of any investigations.

Table 1: Summary of complaints received during August 2021

Complaint Reference No.	Worksite Reference	Description of complaint	Results of investigation
HS2-21-42493-C	N/A	A complaint was received around the increase in dust pollution from site activities.	A response was provided on the mitigation measures being implemented across the sites to reduce impacts on local air quality, these include best practice dust mitigation and strict emission standards for all construction vehicles and plant (as outlined in the Code of Construction Practice). Dust monitoring is in place to ensure the effectiveness of mitigation measures.

Appendix A – Worksites and Monitoring Locations

Figure 1: Worksites and Monitoring locations at Sublot 2B3 during August 2021

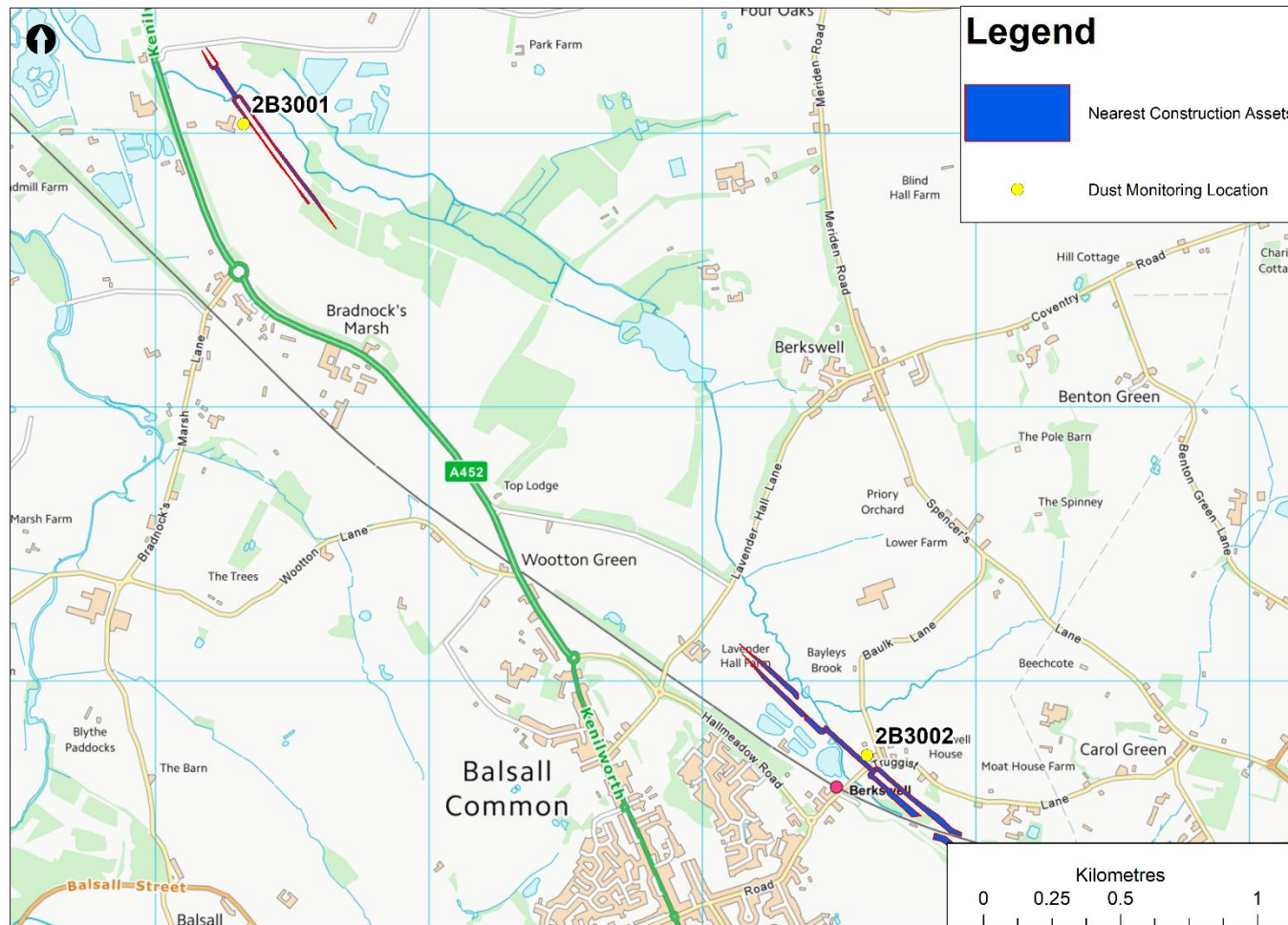
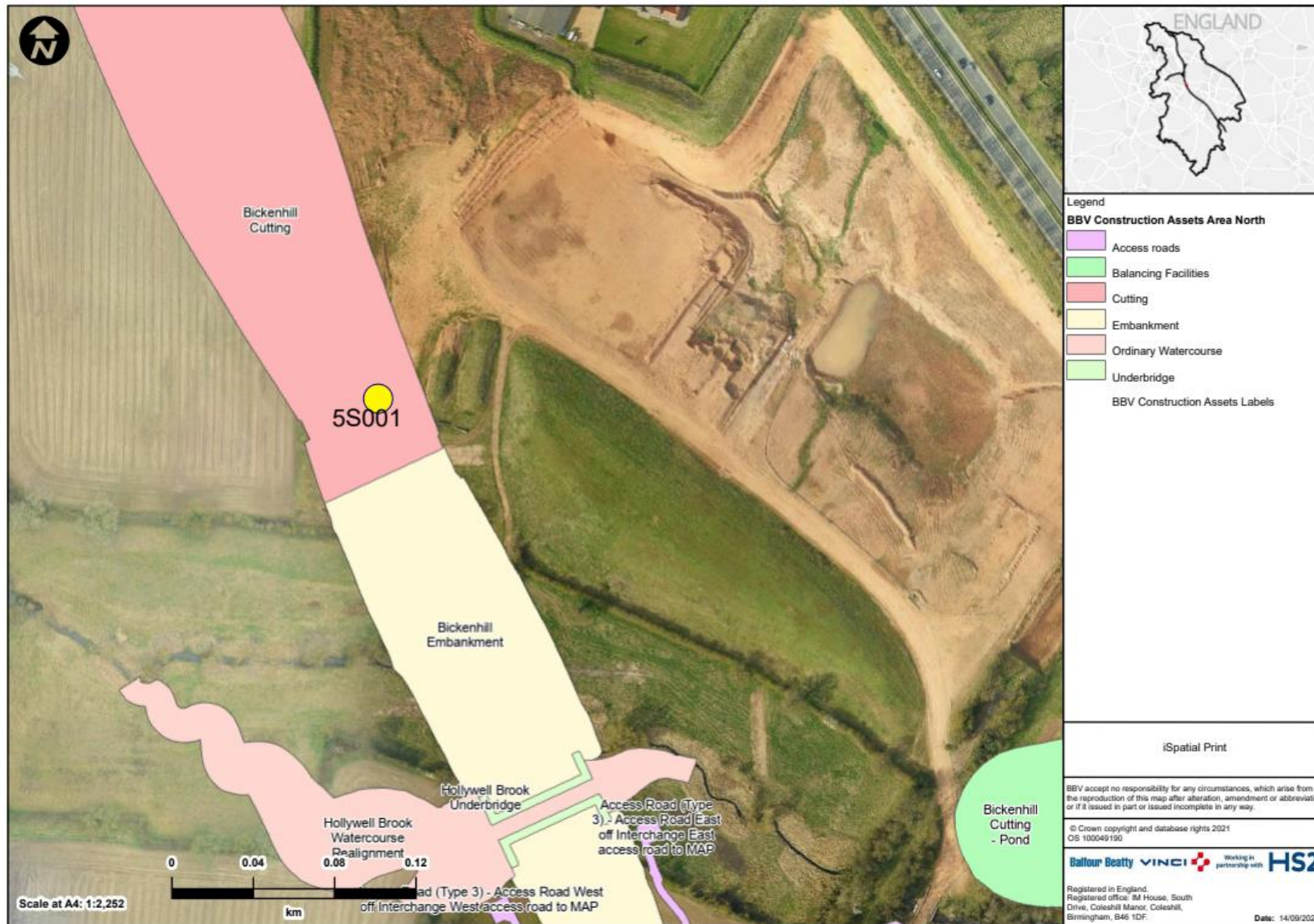


Figure 2: Worksites and Monitoring locations at Sublot 5S during August 2021



Appendix B – Dust Monitoring Results

Table 2: Dust monitoring locations and August 2021 Results

Monitoring site ID	Coordinates (X,Y)	Location description	Dust risk rating for site	Monitoring site active during period	Change to site since previous period report	Mean 1-hour PM ₁₀ concentration (µg/m ³)	Minimum 1-hour PM ₁₀ concentration (µg/m ³)	Maximum 1-hour PM ₁₀ concentration (µg/m ³)	Number of 1-hour periods exceeding trigger level of 190 µg/m ³	Data capture (%)
2B3001	422322, 280034	Sublot 2B3, at Mash Farm	M	Yes	No	5.1	0.8	22	0	100
2B3002	424601, 277729	Sublot 2B3, at Cherry Tree Cottage	M	Yes	No	6.0	1.1	40.4	0	99.9
5S001	420492, 283783	Sublot 5S, at Hollywell Brook	M	Yes	No	6.1	0.9	31.8	0	72.3

Figure 3: Construction dust 1-hour mean mean indicative PM₁₀ concentration for dust monitor 2B3001

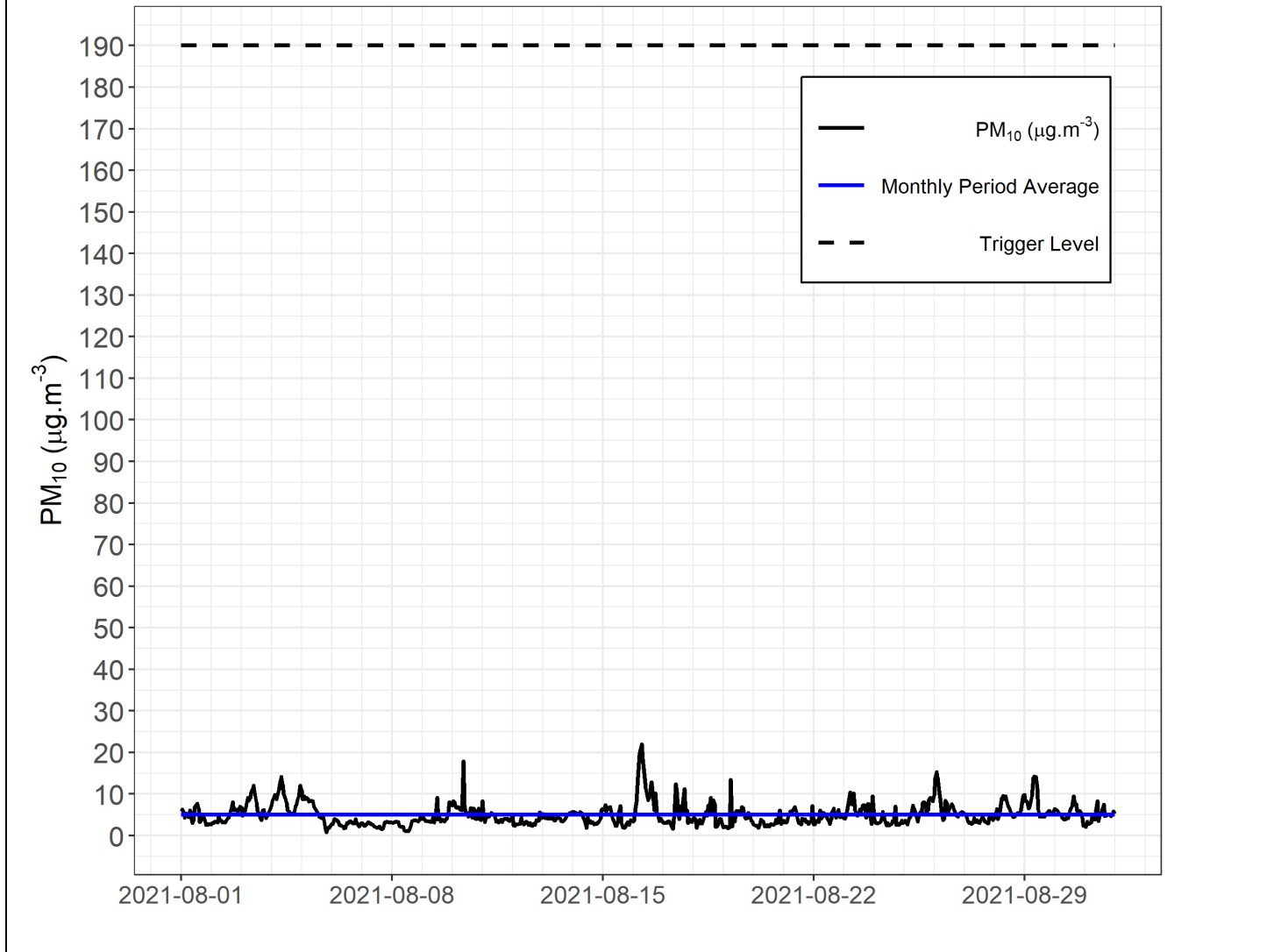


Figure 4: Construction dust 1-hour mean mean indicative PM₁₀ concentration for dust monitor 2B3002

