



Safety in Custody Statistics, England and Wales: Deaths in Prison Custody to September 2021 Assaults and Self-harm to June 2021

Main Points

Number of deaths increased from the previous 12-month period



In the 12 months to September 2021, there were 396 deaths in prison custody, an **increase** of 40% from 283 deaths the previous 12 months. Of these, 81 deaths were self-inflicted, a 13% **increase** from the 72 self-inflicted deaths in the previous 12 months.

In the most recent quarter there were 65 deaths, a 6% **decrease** from 69 deaths in the previous quarter.

The rate of self-harm incidents decreased in male establishments from the previous 12-month period but increased in female establishments



There were 53,290 self-harm incidents in the 12 months to June 2021, **down** 13% from the previous 12 months, comprising a 16% **decrease** in male establishments and a 2% **increase** in female establishments.



Over the same period, the *rate* of self-harm incidents per 1,000 prisoners, which takes account of the reduction in the prison population between this and the previous year, **decreased** 13% in male establishments but **increased** 16% in female establishments.

In the most recent quarter, there were 14,007 self-harm incidents, **up** 16% on the previous quarter, comprising of an 8% **increase** in male establishments and a 47% **increase** in female establishments.

The number of individuals who self-harmed decreased



There were 11,453 individuals who self-harmed in the 12 months to June 2021, **down** 11% from the previous 12 months. The number of self-harm incidents per individual **decreased** from 4.8 in the 12 months to June 2020 to 4.7 in the 12 months to June 2021.

Assaults decreased from the previous 12-month period



There were 19,470 assault incidents in the 12 months to June 2021, **down** 30% from the 12 months to June 2020. In the most recent quarter, assaults **increased** by 11% to 5,128 incidents.

Assaults on staff decreased from the previous 12-month period



There were 7,612 assaults on staff in the 12 months to June 2021, **down** 16% from the previous 12 months. In the latest quarter the number of assaults **increased** by 14% to 2,028 incidents.

The number of serious assaults decreased
10% of all assaults were serious



In the 12 months to June 2021, there were 2,009 serious assault incidents, a **decrease** of 37% from the previous 12 months. Serious prisoner-on-prisoner assaults **decreased** by 44% to 1,332 in the 12 months to June 2021. Serious assaults on staff also **decreased**, by 16% to 717.

Statistician's comment

In the 12 months to June 2021 we have seen falls in the number of self-harm and assault incidents, and in the 12 months to September 2021 we have seen an increase in the number of deaths. Statistics for these periods relate to the exceptional period during the Covid-19 pandemic, including reduced activity within the Criminal Justice System and the restricted regimes prisons put in place in order to safely manage the risks of infection during the pandemic (see Further Information at the end of this bulletin). Comparisons of these statistics with earlier periods will reflect the impact of Covid-19 as well as underlying trends.

Deaths have increased by 40% to 396 deaths in the year to September 2021. This has been driven by deaths related to Covid-19. However, in the latest quarter deaths fell by 6% to 65, and remained much lower than the peak of 154 in the January to March 2021 quarter. Only 7 were suspected to be due to Covid-19, up from 2 in the previous quarter, but lower than 64 in the January to March 2021 quarter. There were 81 self-inflicted deaths in the latest year, an increase from 72 in the previous year.

The number of self-harm incidents has fallen in the 12 months to June 2021, by 13%, comprising a decrease of 16% in male establishments and an increase of 2% in female establishments. This partially reflects a fall in the prison population over the same period, with fewer receptions of sentenced offenders following reduced court activity in response to Covid-19 (as set out in Offender management statistics quarterly: October to December 2020). With the fall in the prison population taken into account, the rate of self-harm incidents per 1,000 prisoners decreased by 13% in male establishments but increased by 16% in female establishments in the 12 months to June 2021.

The number of assault incidents fell by 30% in the 12 months to June 2021, including a 37% fall in serious assaults. In addition to reflecting the reduced prison population, this is expected to be influenced by the reduced contact included in prison regimes to reduce the risk of Covid-19 infection. Taking the fall in the population into account, assault rates decreased in both male and female establishments, by 27% and 10% respectively.

Background

Safety in custody statistics cover deaths, self-harm and assaults in prison custody and HMPPS Immigration Removal Centres in England and Wales, with figures in the summary tables in the quarterly publications presented on a 12-month rolling basis over an 11-year time series.¹ This release provides statistics on deaths of prisoners to the end of September 2021, and deaths from Covid-19 have been presented in the section below.

The release also provides statistics on assaults and self-harm up to the end of June 2021. The latest 12-month data reflects a full year since the outbreak of Covid-19, when Covid-19 restrictions were introduced in prisons to limit and control the spread of the virus. These restrictions included the implementation of effective isolation of prisoners, reverse cohorting of new entrants to custody, and shielding of vulnerable prisoners. See Further Information at the end of this bulletin on the managing and running of prisons during the pandemic.

The total prison population has fallen since the first quarter of 2020, falling more so for certain population groups². As at 30 June 2021, the total prison population was around 4,700 or 6%

¹ Data on deaths is published three months ahead of self-harm and assaults. Therefore, the deaths annual publication and tables are published alongside the Safety in Custody quarterly update to September publication.

² <https://www.gov.uk/government/collections/offender-management-statistics-quarterly>. Latest data for the year to September 2021 is published in Offender Management Statistics Bulletin, England and Wales Quarterly: April to June 2021.

smaller than at the end of March 2020³. The female population has reduced by 12%, whereas the male population has reduced by 5%.

These changes in population should be borne in mind when interpreting changes in the numbers of incidents over the past year. In the context of substantial population change, rates per 1,000 prisoners more accurately describe changes in the likelihood of incidents occurring⁴. Data on deaths, self-harm and assaults are routinely presented as rates of incidents per 1,000 prisoners (as well as numbers) for all prisoners and the male and female estates. Additional commentary is offered where these rates indicate different trends to the numbers of incidents.

Supplementary annual tables, providing more in-depth statistics on a calendar year basis, underlying data files with pivot tables providing lower level granularity, and a guidance technical document are also available alongside this bulletin, at www.gov.uk/government/collections/safety-in-custody-statistics.

Youth estate

These statistics include incidents that occurred in the youth estate. However, readers should be aware of the **'Safety in the children and young people secure estate'** statistics bulletin. This provides quarterly statistics on assault and self-harm incidents, and deaths for children and young people in the secure estate. It is being published simultaneously to this Safety in Custody quarterly bulletin at the following link:

<https://www.gov.uk/government/statistics/announcements/safety-in-the-youth-secure-estate-bulletin>

For continuity in the Safety in Custody data series, incidents in the youth estate and associated tables are included in this Safety in Custody bulletin, but readers are referred to 'Safety in the children and young people secure estate' for commentary.

Historically Safety in Custody statistics for the youth estate use an age-based definition for youth incidents, whereas the 'Safety in the children and young people secure estate' statistics are based on the accommodation type. Both methodologies include all incidents occurring in dedicated under-18 Young Offender Institutions (even if they're aged over 17)⁵. However, Safety in Custody statistics also includes all incidents in other establishments involving young people aged 15 to 17. Furthermore, 'Safety in the children and young people secure estate' statistics also includes all incidents within the youth estate at Parc Young People's Unit and the under 18 part of Feltham as well as other custody settings holding under 18s previously not covered by Safety in Custody. For continuity and to align with the definition of the youth estate used in 'Safety in the children and young people secure estate', tables in this publication present data for the latest year(s) using both the historic methodology of Safety in Custody and also the methodology of the youth publication⁶.

³ <https://www.gov.uk/government/statistics/offender-management-statistics-quarterly-october-to-december-2020>

⁴ The comparability over the year of other measures that are based on self-harming individuals (such as the number of incidents per self-harming individual, or the proportion of incidents requiring hospital attendance) are not affected by the reduction in population.

⁵ These are Cookham Wood, Werrington and Wetherby.

⁶ Assaults are presented based on both methodologies from April 2018 and self-harm incidents are presented based on both methodologies from April 2019.

1 Deaths: 12 months ending September 2021

Number of deaths increased from the previous 12-month period

In the 12 months to September 2021, there were 396 deaths in prison custody, an increase of 40% from 283 deaths in the previous 12 months which corresponds with deaths related to Covid-19. There were 81 self-inflicted deaths, an increase of 13% from 72 in the previous 12 months.

In the most recent quarter there were 65 deaths, a 6% decrease from 69 deaths in the previous quarter.

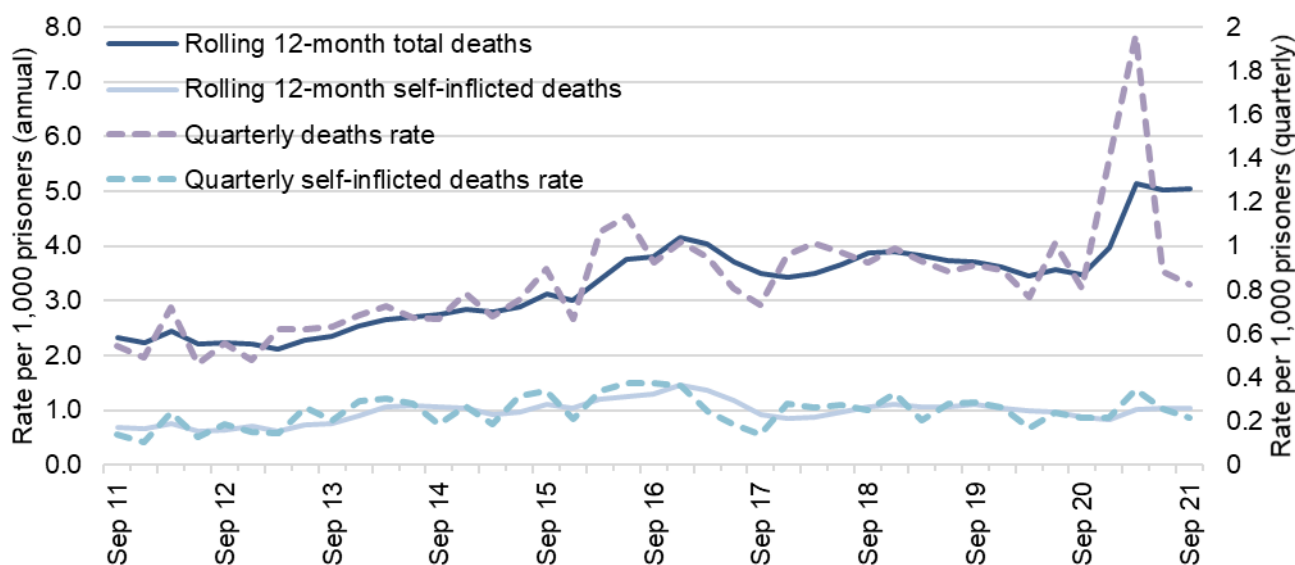
The number of deaths related to Covid-19 increased slightly in the most recent quarter

In the most recent quarter (July to September 2021), there were 7 deaths (11% of total deaths) that were suspected to be due to Covid-19, an **increase** from 2 deaths (3% of total deaths) in the previous quarter.

In the same period, there were 9 deaths within 28 days of having a positive Covid-19 test or where there was a clinical assessment that Covid-19 was a contributory factor, an **increase** from 3 in the previous quarter.

There were 17 self-inflicted deaths in the most recent quarter, 3 less than in the previous quarter.

Figure 1: Quarterly 12-month rolling rate of deaths per 1,000 prisoners, 12 months ending September 2011 to 12 months ending September 2021, with quarterly rates



In the 12 months to September 2021, there were 396 deaths in prison custody (a rate of 5.1 per 1,000 prisoners), an increase from 283 deaths in the previous 12 months (a rate of 3.5 per 1,000 prisoners). Long-term trends and more detail are presented in the annual tables⁷.

Over the same period, there were 281 deaths due to natural causes (a rate of 3.6 per 1,000 prisoners), a 55% increase from 181 deaths (a rate of 2.2 per 1,000 prisoners) in the previous 12 months. This increase of 100 in deaths due to natural causes in the 12 months to September 2021 reflects deaths from Covid-19 (with further information on these below).

⁷ Data on deaths are published three months ahead of assaults and self-harm, therefore, the annual publication Deaths in prison custody for 1978 to 2020 is published in the Safety in Custody quarterly update to September 2020 https://assets.publishing.service.gov.uk/government/uploads/system/uploads/attachment_data/file/956262/deaths-prison-custody-1978-2021.ods

There were 81 apparent self-inflicted deaths in the 12 months to September 2021, an increase of 13% from 72 self-inflicted deaths in the previous 12 months. The rate of self-inflicted deaths increased from 0.9 per 1,000 prisoners in the previous 12 months to 1.0 in the latest 12 months.

There were 33 deaths recorded as 'Other' in the 12 months to September 2021, 27 of which are 'awaiting further information' prior to being classified. In some cases, the results of the toxicology and post-mortem tests are inconclusive, meaning classification cannot be arrived at until inquest (which can be a considerable time after the death). As a result, the number of deaths in the individual categories is not directly comparable with earlier years: it is likely that numbers in some categories will be revised upwards once classifications have been finalised.

In the most recent quarter there were 65 deaths, a 6% decrease from 69 deaths in the previous quarter. There were 17 self-inflicted deaths in the third quarter of 2021, a decrease from 20 in the previous quarter. However, quarterly death figures should be considered with caution due to greater volatility and the potential for seasonal effects.

Deaths from Covid-19

From the start of the pandemic in March 2020 to the end of September 2021, 159 prisoners have died within 28 days of having a positive Covid-19 test or where there was a clinical assessment that Covid-19 was a contributory factor in their deaths regardless of the cause of death. Of these 159 deaths, 132 are suspected to be due to Covid-19. The remaining 27 deaths are believed to be due to other causes although the prisoner had tested positive for Covid-19.

In the latest quarter (July to September 2021), a higher proportion of deaths were related to Covid-19 than in previous quarter. In this quarter, 14% of all deaths were of prisoners who had died within 28 days of a positive test for Covid-19, up from 4% of all deaths in the previous quarter, but below a peak of 47% in January to March 2021. Similarly, deaths suspected to have been due to Covid-19 made up 11% of all deaths in the latest quarter, up from 3% in the previous quarter, but below a peak of 42% in January to March 2021.

As with all deaths in prison custody, each case will be investigated by the Prisons and Probation Ombudsman and subject to an inquest to determine the official cause of death and where necessary this data will be updated.

The most up to date data on deaths suspected to be due to Covid-19 can be found here: <https://www.gov.uk/government/collections/hm-prison-and-probation-service-covid-19-statistics-monthly>.

2 Self-harm: 12 months to June 2021

The rate of self-harm incidents decreased in the male estate from the previous 12-month period but increased in the female estate

There were 53,290 self-harm incidents in the 12 months to June 2021, **down** 13% from the previous 12 months (a 16% **decrease** in male establishments but a 2% **increase** in female establishments). Taking into account of the fall in the prison average population since the start of 2020, the rate of self-harm incidents per 1,000 prisoners **decreased** 13% in male establishments but **increased** 16% in female establishments in the 12 months to June 2021.

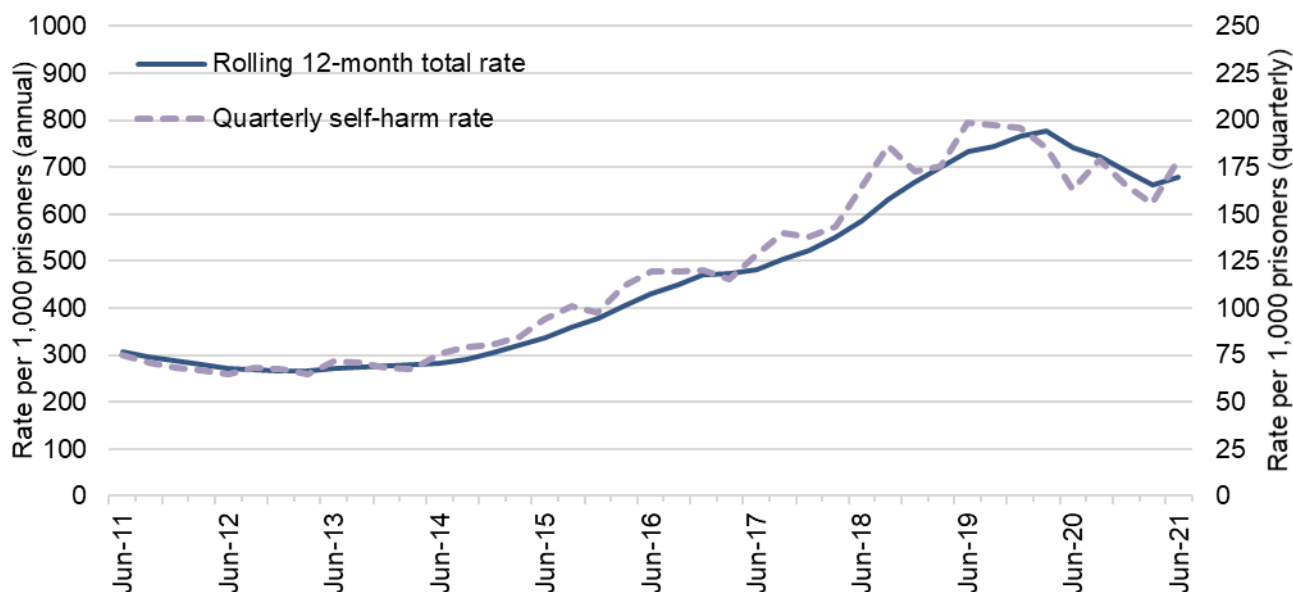
In the most recent quarter there were 14,007 self-harm incidents, **up** 16% on the previous quarter (an 8% **increase** in male establishments and a 47% **increase** in female establishments).

The number of individuals who self-harmed decreased 13% in the latest year.

There were 11,453 individuals who self-harmed in the 12 months to June 2021, an 11% **decrease** from 12,826 in the previous 12 months. The number of self-harm incidents per individual **decreased** to 4.7 in the 12 months to June 2021, from 4.8 in the previous year.

Statistics for the 12 months to June 2021 relate to the exceptional period since the start of the Covid-19 pandemic and the restricted regimes prisons put in place in order to safely manage the risks of infection during the pandemic (see Further Information at the end of this bulletin). This affects the comparability of the statistics with earlier periods.

Figure 2: Quarterly 12-month rolling rate of self-harm incidents per 1,000 prisoners, 12 months ending June 2011 to 12 months ending June 2021, with quarterly rates



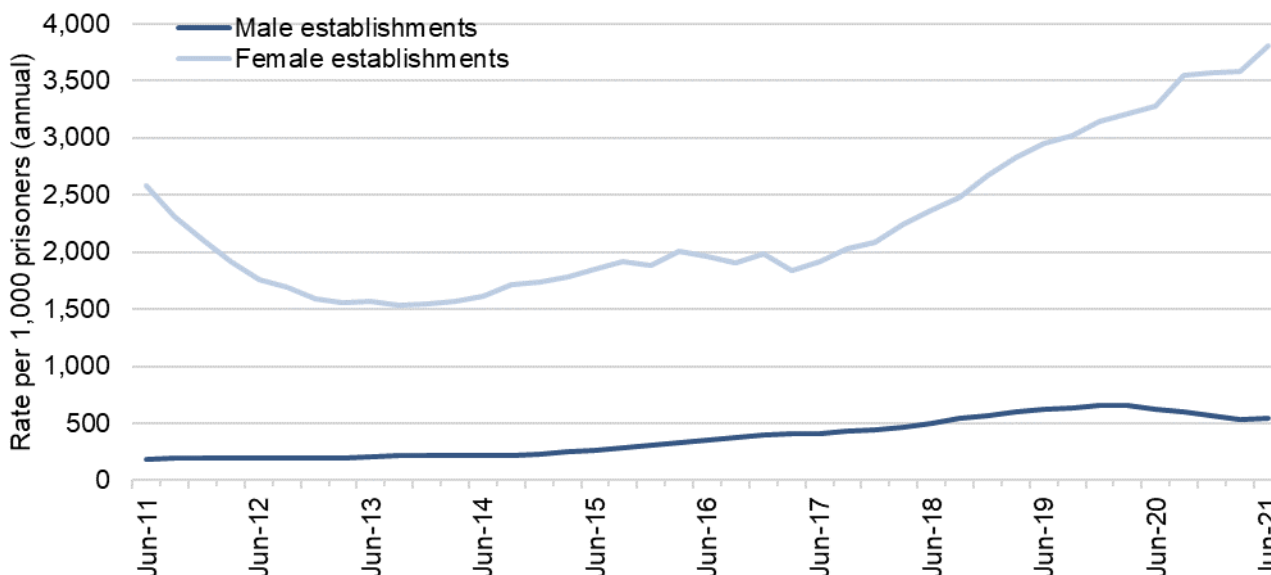
In the 12 months to June 2021, there were 53,290 reported incidents of self-harm (a rate of 679 per 1,000 prisoners), down 13% from the previous 12 months. On a quarterly basis, the number of incidents in the three months to June 2021 increased by 16% from the previous quarter, from 12,126 to 14,007 incidents.

The number of individuals who self-harmed decreased by 11% to 11,453 in the latest 12 months (a rate of 146 individuals per 1,000 prisoners), from 12,826 in the previous 12 months. The number of incidents per self-harming individual decreased from 4.8 in the previous year to 4.7 in the latest 12 months, although a small number of prolific self-harmers have a disproportionate

impact on this figure. Just over a half (52%) of prisoners who self-harmed in 2020 did so more than once.

The number of self-harm incidents requiring hospital attendance decreased by 9% to 2,734 in the 12 months to June 2021 but increased by 10% in the latest quarter to 700 incidents. The proportion of incidents that required hospital attendance increased slightly from 4.9% in the 12 months to June 2020 to 5.1% in the latest 12 months.

Figure 3: Quarterly 12-month rolling rate of self-harm incidents per 1,000 prisoners by gender of establishment, 12 months ending June 2011 to 12 months ending June 2021



Self-harm trends differ considerably by gender. The number of incidents in male establishments decreased by 16% from 49,242 in the 12 months to June 2020 to 41,150 in the 12 months to June 2021. The number of incidents in the female estate increased 2% from 11,950 in the previous 12 months to 12,140.

On a quarterly basis, the number of incidents in the three months to June 2021 increased by 8% in male establishments compared with the previous three months and increased by 47% in female establishments. While self-harm in female establishments has been on the rise, the large difference in the latest quarter is primarily driven by a reduction in self-harm in the previous quarter compared to the recent trend.

The rate of incidents, which takes population size into account, was 546 incidents per 1,000 prisoners in the male estate in the 12 months to June 2021, down 13% from 624 incidents per 1,000 prisoners in the 12 months to June 2020. The rate of incidents per 1,000 prisoners in female establishments was far higher, and increased by 16%, from 3,279 in the previous 12 months to 3,808 in the latest 12 months.

The number of incidents per individual who self-harmed in female establishments was more than twice that in male establishments and increased in the latest year. In the 12 months to June 2021, there were 10.2 incidents of self-harm per self-harming female compared with 9.4 the previous 12 months, while for males it decreased to 4.0 incidents per self-harming individual from 4.3 the previous 12 months.

The proportion of incidents that required hospitalisation was higher in male establishments (5.8% compared to 2.8% in female establishments). Self-harm incidents requiring hospital attendance decreased in male establishments by 12%, from 2,732 in the 12 months to June 2020 to 2,391 in the 12 months to June 2021, and increased by 22% to 343 in female establishments in the latest 12 months.

Assaults: 12 months to June 2021

Assaults and serious assaults decreased from the previous 12-month period.

In the 12 months to June 2021, there were 19,470 assault incidents, a 30% decrease from the previous 12 months. Of these 2,009 were serious assaults, down by 37%. Rates of assault and serious assault per 1,000 prisoners decreased to a lesser extent, by 26% and 32% respectively.

Assaults increased by 11% in the latest quarter to 5,128 incidents while the number of serious assaults increased by 1% to 506 incidents.

The rate of assault per 1,000 prisoners was higher in female than male establishments.

The rate of assault in male establishments decreased by 27% from the previous 12 months, while the rate in female establishments decreased by 10%. This resulted in assault rates for the 12 months to June 2021 being higher in female establishments (301 incidents per 1,000 prisoners) than in male establishments (246 incidents per 1,000 prisoners).

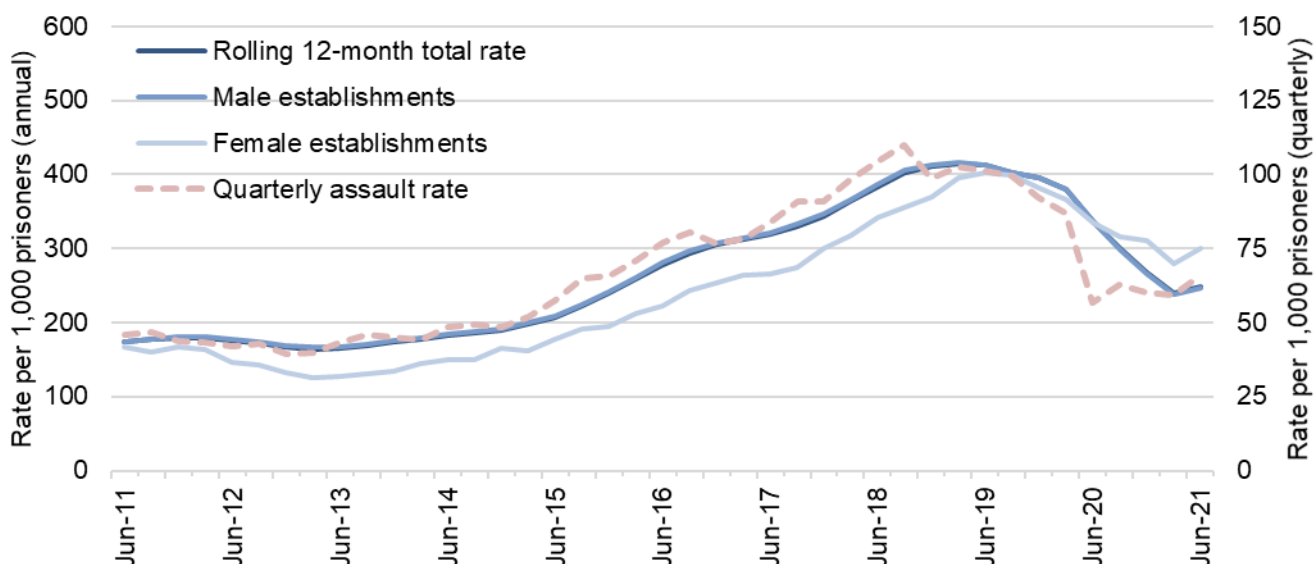
Assaults on staff decreased from the previous 12-month period

There were 7,612 assaults on staff in the 12 months to June 2021, a 16% decrease from the previous 12 months. The rate of assaults on staff per 1,000 prisoners decreased to a lesser extent, by 12%. In the latest quarter the number of assaults on staff increased by 14% to 2,028 incidents.

The rate of assault on staff decreased by 12% in male establishments but increased by 5% in female establishments compared with the previous 12 months.

Statistics for the 12 months to June 2021 relate to the exceptional period since the start of the Covid-19 pandemic and the restricted regimes prisons put in place in order to safely manage the risks of infection during the pandemic (see Further Information at the end of this bulletin). This affects the comparability of the statistics with earlier periods.

Figure 4: Quarterly 12-month rolling rate of total assaults by gender of establishment, 12 months ending June 2011 to 12 months ending June 2021, with quarterly rates



In the 12 months to June 2021, assault incidents decreased by 30% to 19,470, a rate of 248 incidents per 1,000 prisoners. This represents a decrease in the rate of assault per 1,000 prisoners (which takes into account the decrease in the prison population over the period) of a lesser extent, 26%. In the latest quarter, there were 5,128 assaults, an increase of 11% from the

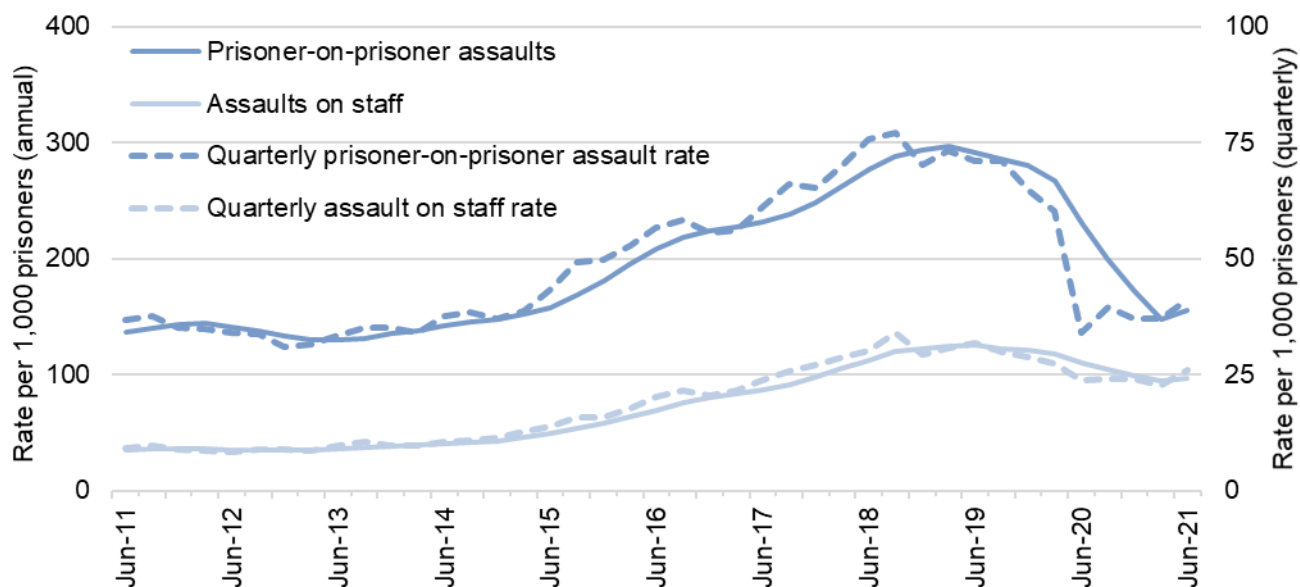
previous quarter. The quarterly figure reached a peak of 9,111 in the July to September 2018 quarter. It has continued on a downward trend since then, including a considerable decrease in the early stages of the Covid-19 pandemic associated with changes in prison regimes and activity in the criminal justice system.

The number of incidents in male establishments decreased by 30% from 26,522 to 18,512 in the 12 months to June 2021. The rate of assaults decreased to a similar extent over this period, by 27% to 246 per 1,000 prisoners.

The number of incidents in female establishments decreased by 22% from 1,222 to 958 incidents in the 12 months to June 2021. The rate of assault also decreased over this period but to a lesser extent, by 10% to 301 per 1,000 prisoners. With rates of assault decreasing to a greater extent in male establishments than in female establishments in the latest 12 months, assault rates were higher in female establishments than in male establishments.

In the latest quarter, the number of assaults in male establishments increased by 10% to 4,867, and the number of assaults in female establishments increased by 31% to 261.

Figure 5: Quarterly 12-month rolling rate of prisoner-on-prisoner assaults and assaults on staff, 12 months ending June 2011 to 12 months ending June 2021, with quarterly rates



There were 12,181 prisoner-on-prisoner assaults⁸ in the 12 months to June 2021 (a rate of 155 per 1,000 prisoners). This is a decrease of 36% from the 19,056 assaults in the previous 12 months. The rate of prisoner-on-prisoner assault per 1,000 prisoners decreased to a lesser extent, 33%. In the latest quarter, there were 3,222 prisoner-on-prisoner assaults, an 11% increase from 2,901 in the previous quarter.

There were 7,612 assaults on staff⁹ in the 12 months to June 2021 (a rate of 97 per 1,000 prisoners). This is a 16% decrease from the 9,055 in the previous 12 months. The rate of prisoner-on-staff assault per 1,000 prisoners decreased to a lesser extent, by 12%. In the latest quarter, there were 2,028 assaults on staff, a 14% increase from 1,778 incidents in the previous quarter.

⁸ This figure includes any prisoner-on-prisoner assaults where there may also have been an assault on staff.

⁹ There was a change in how staff assaults have been recorded from April 2017, this has simplified how incidents involving staff are identified, however it is possible this has increased the recording of incidents. Please see the Guide to Safety in Custody statistics for further information

The proportion of assaults on staff increased to 39% of all incidents in the 12 months to June 2021, from 33% in the previous 12 months, having steadily increased from 20% in the 12 months to June 2012.

In male establishments, prisoner-on-prisoner assaults decreased by 36% to 11,754 incidents (156 incidents per 1,000 male prisoners), and the rate decreased to a lesser extent, by 33% in the 12 months to June 2021. Assaults on staff decreased by 16% to 7,072 incidents (94 incidents per 1,000 male prisoners), and the rate decreased by 12% compared to the previous 12 months.

In female establishments, prisoner-on-prisoner assaults decreased by 34% to 427 incidents (134 incidents per 1,000 female prisoners), and the rate decreased by 24% in the 12 months to June 2021. Assaults on staff decreased by 8% to 540 incidents (169 incidents per 1,000 female prisoners) compared to the previous 12 months, but the rate increased by 5%.

In the 12 months to June 2021, the proportion of assaults that were on staff was higher in female establishments (56%) than in male establishments (38%).

Serious assaults

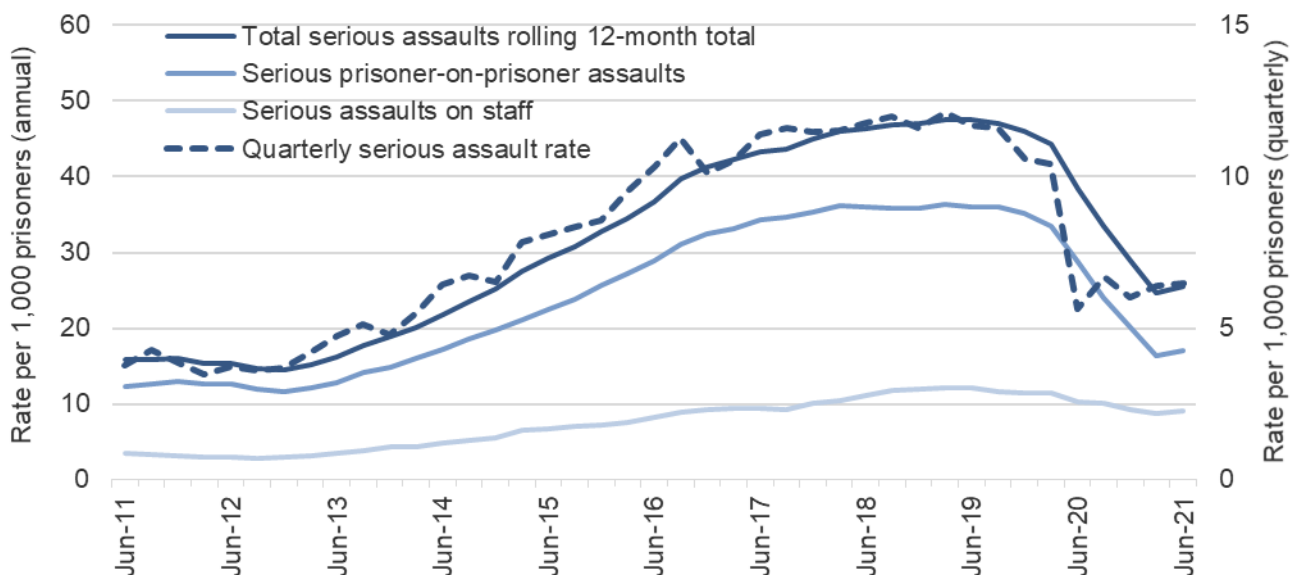
Of the 19,470 assault incidents, 2,009 (10%) were serious.

In the 12 months to June 2021, there were 2,009 serious assault incidents, a 37% decrease from the previous 12 months. The rate of serious assault decreased to a lesser extent, by 32% (taking account of decreases in population size over the period).

Serious prisoner-on-prisoner assaults decreased by 44% to 1,332 in the 12 months to June 2021, and serious assaults on staff decreased by 16% to 717.

Serious assaults are those which fall into one or more of the following categories: a sexual assault; requires detention in outside hospital as an in-patient; requires medical treatment for concussion or internal injuries; or incurs any of the following injuries: a fracture, scald or burn, stabbing, crushing, extensive or multiple bruising, black eye, broken nose, lost or broken tooth, cuts requiring suturing, bites, temporary or permanent blindness.

Figure 6: Quarterly 12-month rolling rate of total serious assaults, serious prisoner-on-prisoner assaults, and serious assaults on staff, 12 months ending June 2011 to 12 months ending June 2021



In the 12 months to June 2021, there were 2,009 serious assaults (a rate of 26 per 1,000 prisoners), a 37% decrease from the previous 12 months. The rate of serious assault decreased to lesser extent, by 32%. In the latest quarter, there were 506 serious assaults, a 1% increase from the previous quarter. In the latest 12 months, 10% of assaults were serious assaults.

There were 1,332 serious prisoner-on-prisoner assaults (a rate of 17 per 1,000 prisoners) in the 12 months to June 2021, a decrease of 44% from the previous 12 months. The rate of serious prisoner-on-prisoner assault decreased to a slightly lesser extent, by 41%. In the latest quarter, there were 344 serious prisoner-on-prisoner assaults, a 6% increase from 326 incidents in the previous quarter.

There were 717 serious assaults on staff (a rate of 9 per 1,000 prisoners) in the 12 months to June 2021, a decrease of 16% from the previous 12 months. The rate of serious prisoner-on-staff assault also decreased, by 10%. In the latest quarter, the number of serious prisoner-on-staff assaults increased by 2% to 181 incidents.

Further Information

Covid-19

Since the start of the Covid-19 pandemic, there has been keen public and Parliamentary interest in how the Ministry of Justice (MOJ) and Her Majesty's Prisons and Probation Service (HMPPS) are managing the running of prisons and the probation system to limit the spread of the virus while maintaining the core functions of these vital parts of the justice system. The core tenet of HMPPS's prison strategy, building on Public Health England (PHE) and Public Health Wales (PHW) advice and learning developed in managing an early outbreak of the virus, is the implementation of effective isolation, reverse cohorting of new entrants to custody, and shielding of vulnerable prisoners.

The latest Covid-19 figures are published monthly on the MOJ website via the following link:

<https://www.gov.uk/government/collections/hm-prison-and-probation-service-covid-19-statistics-monthly>

Accompanying files

As well as this bulletin, the following products are published as part of this release:

- A technical guide providing further information on how the data are collected and processed, as well as information on the revisions policy and legislation relevant to sentencing trends and background on the functioning of the criminal justice system.
- A set of summary tables for the latest quarter, and annual tables up to the latest calendar year.
- Underlying data files with pivot tables, giving lower level granularity.

National Statistics status

National Statistics status means that official statistics meet the highest standards of trustworthiness, quality and public value.

All official statistics should comply with all aspects of the Code of Practice for Official Statistics. They are awarded National Statistics status following an assessment by the UK Statistics Authority's (UKSA) regulatory arm. The UKSA considers whether the statistics meet the highest standards of Code compliance, including the value they add to public decisions and debate.

It is the Ministry of Justice's responsibility to maintain compliance with the standards expected for National Statistics. If we become concerned about whether these statistics are still meeting the appropriate standards, we will discuss any concerns with the UKSA promptly. National Statistics status can be removed at any point when the highest standards are not maintained, and reinstated when standards are restored.



Our statisticians regularly review the content of publications. Development of new and improved statistical outputs is usually dependent on reallocating existing resources. As part of our continual review and prioritisation, we welcome user feedback on existing outputs including content, breadth, frequency and methodology. Please send any comments you have on this publication including suggestions for further developments or reductions in content.

Contact

Press enquiries should be directed to the Ministry of Justice press office:

Tel: 020 3334 3536

Email: newsdesk@justice.gsi.gov.uk

Other enquiries about these statistics should be directed to:

David Dawson

Data and Evidence as a Service

Ministry of Justice

102 Petty France

London

SW1H 9AJ

Email: prison-safety-and-security-analysis@justice.gov.uk

Next update: January 2021

URL: www.gov.uk/government/collections/safety-in-custody-statistics

© Crown copyright

Produced by the Ministry of Justice.

Alternative formats are available on request from statistics.enquiries@justice.gsi.gov.uk