

Dynamic CO-CIN report to SAGE and NERVTAG

Executive summary

Includes patients admitted on or after 01 May 2021

There are 27604 patients included in CO-CIN. Of these, 2470 patient(s) have died and 4568 required ICU. 19831 have been discharged home.

Admission

Figure 1

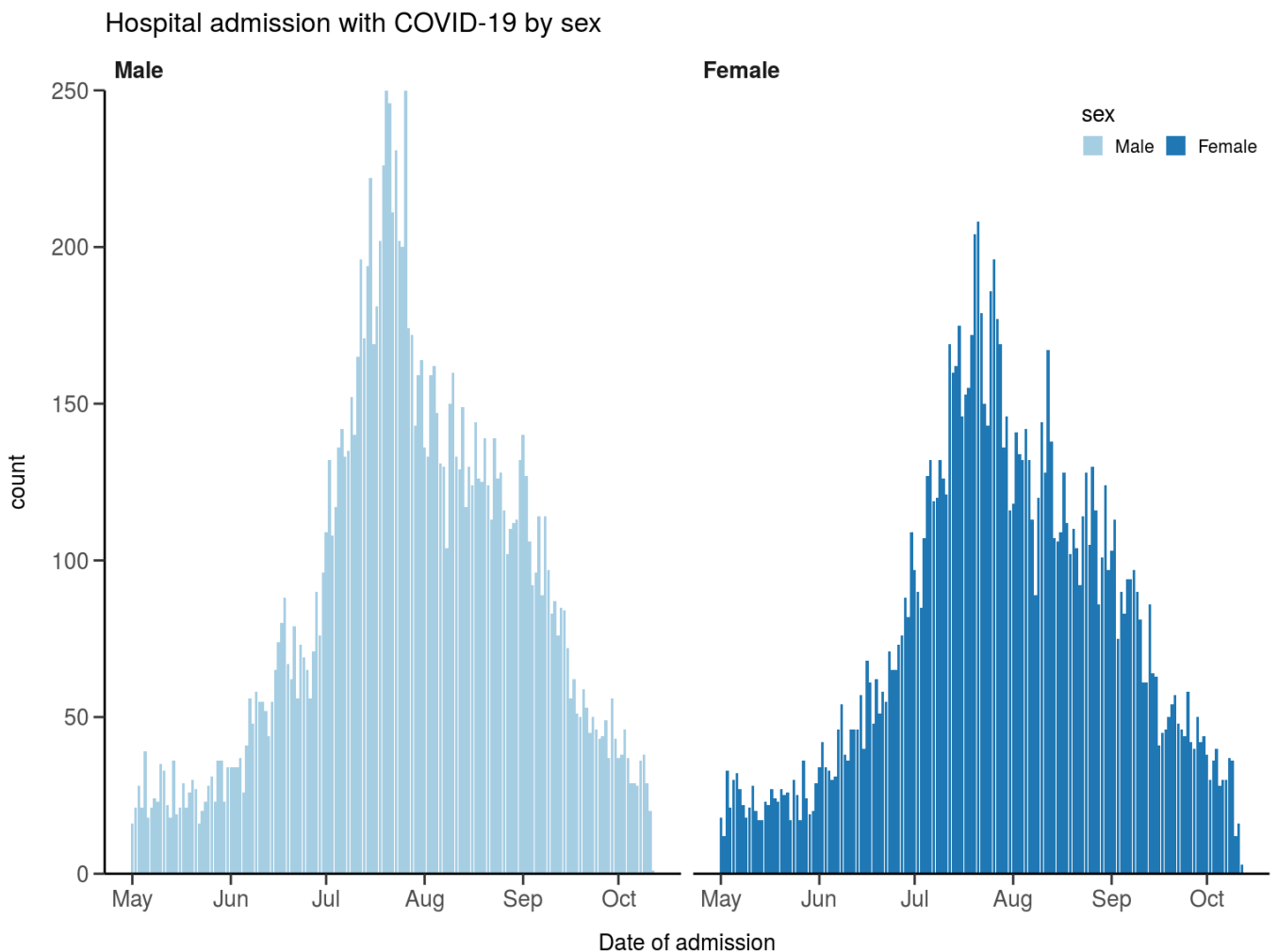
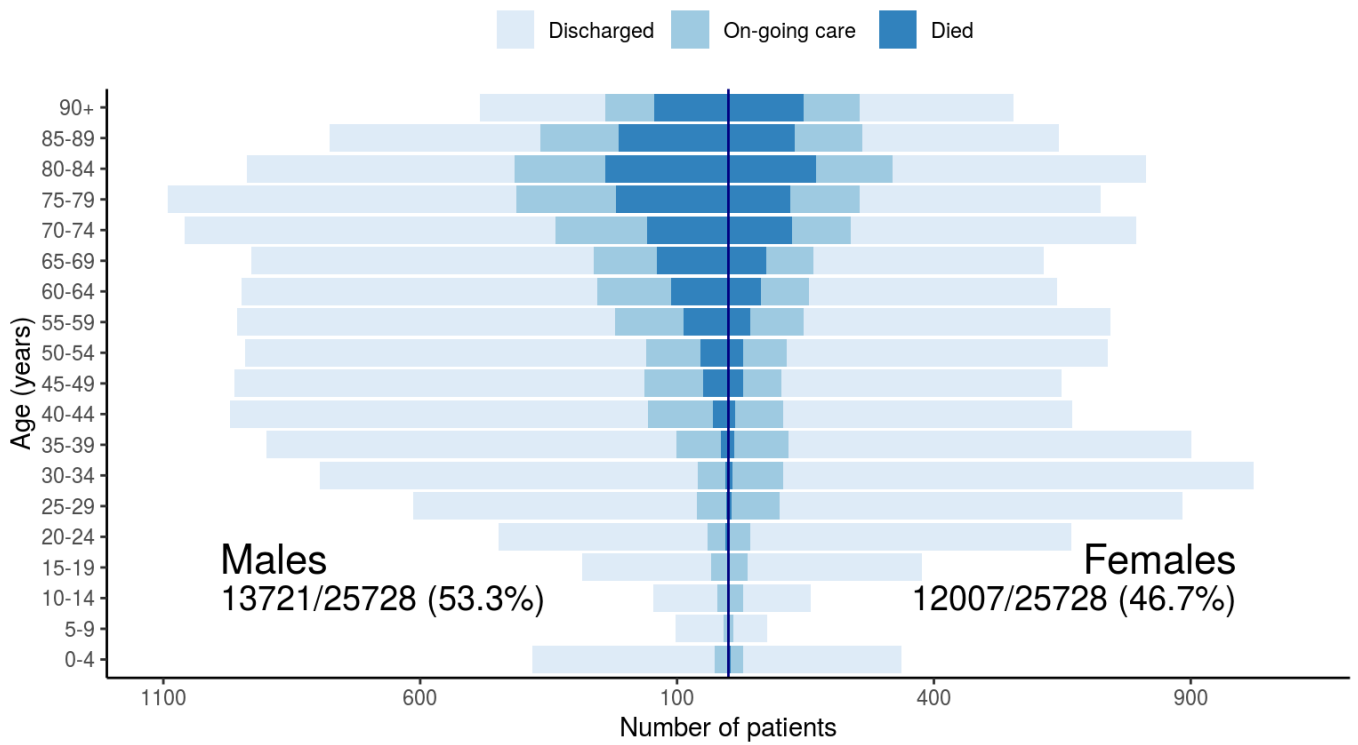


Figure 2

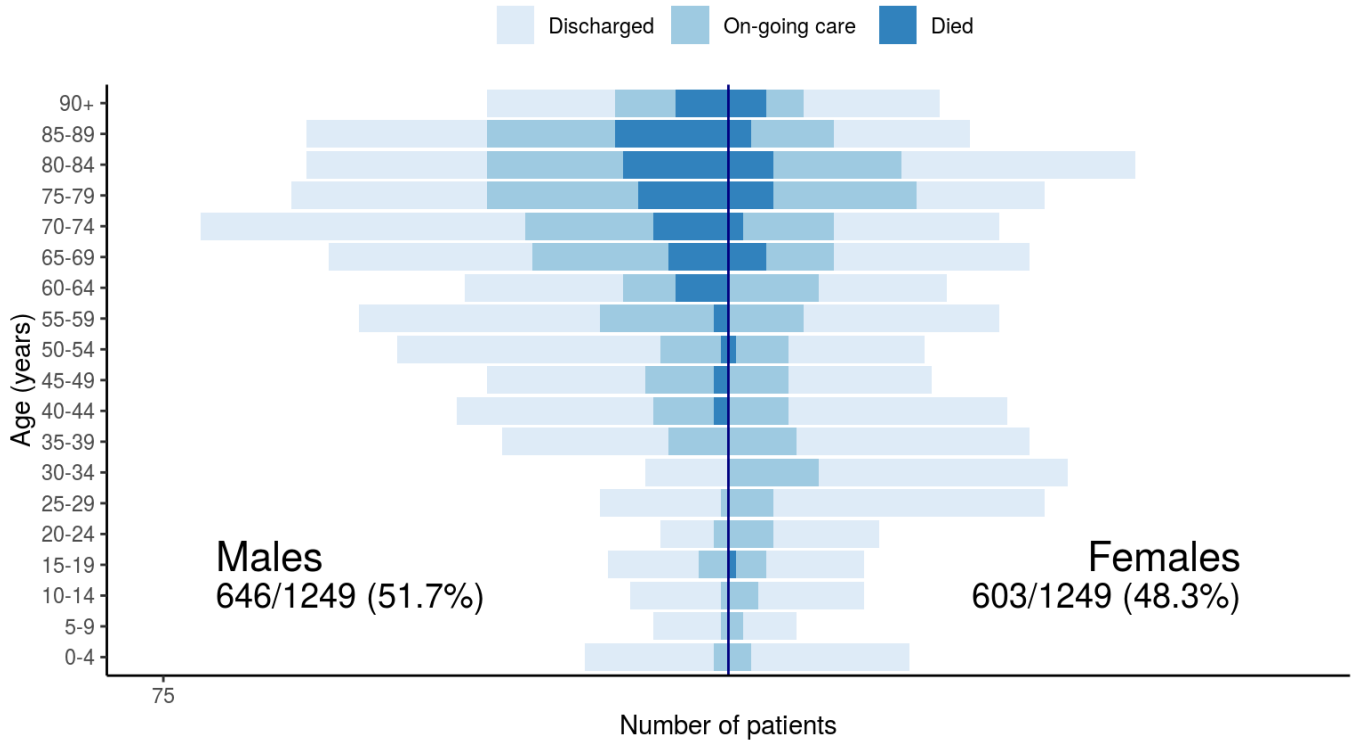
Patients with outcome stratified by age, and sex

All



Patients with outcome stratified by age, and sex

Admitted ≥ 14 days and ≤ 28 days ago

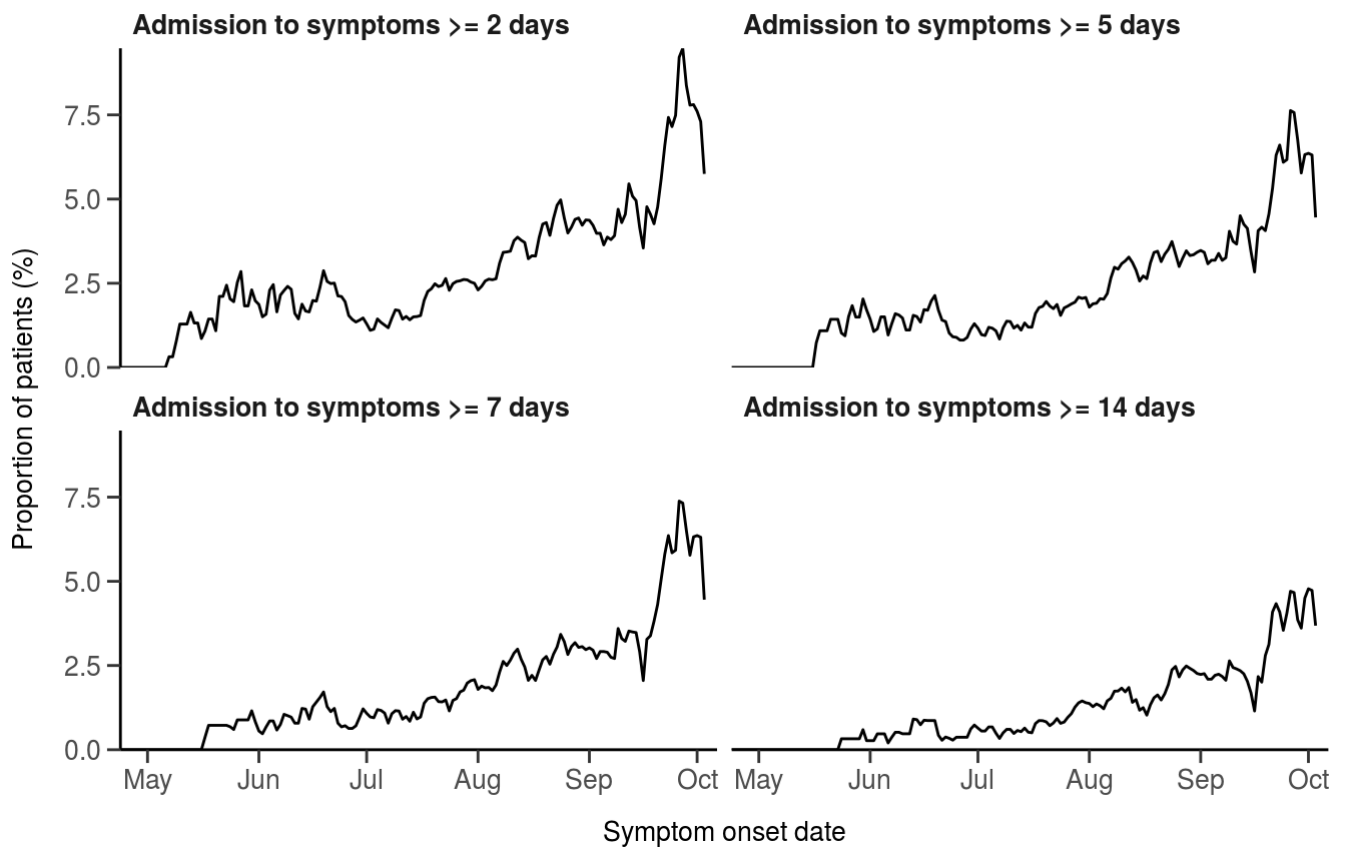


Nosocomial

Figure 3

Proportion with symptom onset occurring after hospital admission

7-day rolling percentage. n = 21736



Patient flow

Figure 4A - All patients

N = 26347

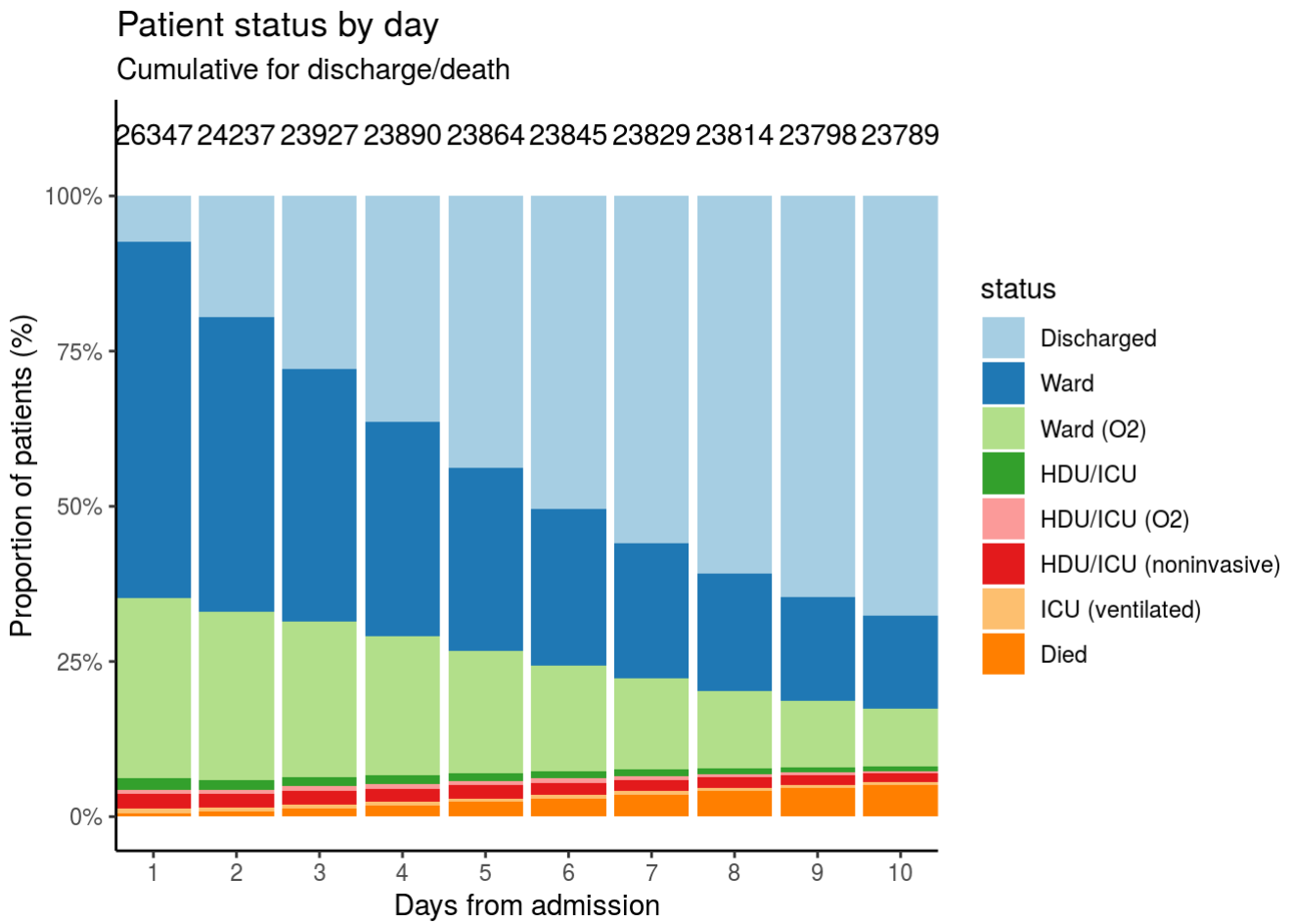
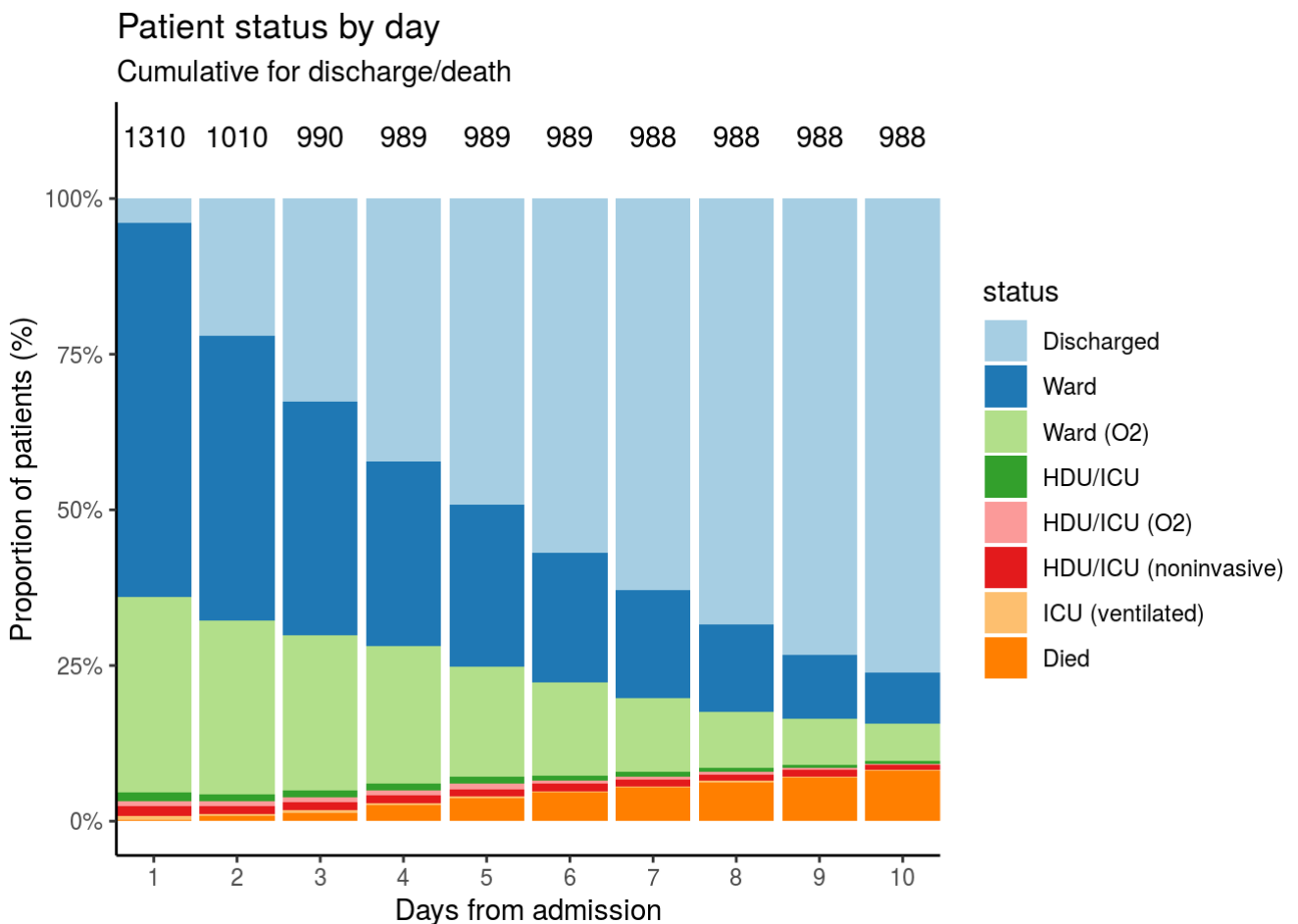


Figure 4B - Patients admitted ≥ 14 days and ≤ 28 days ago

N = 1310



Oxygen requirement

Figure 5A - All patients

N = 25122

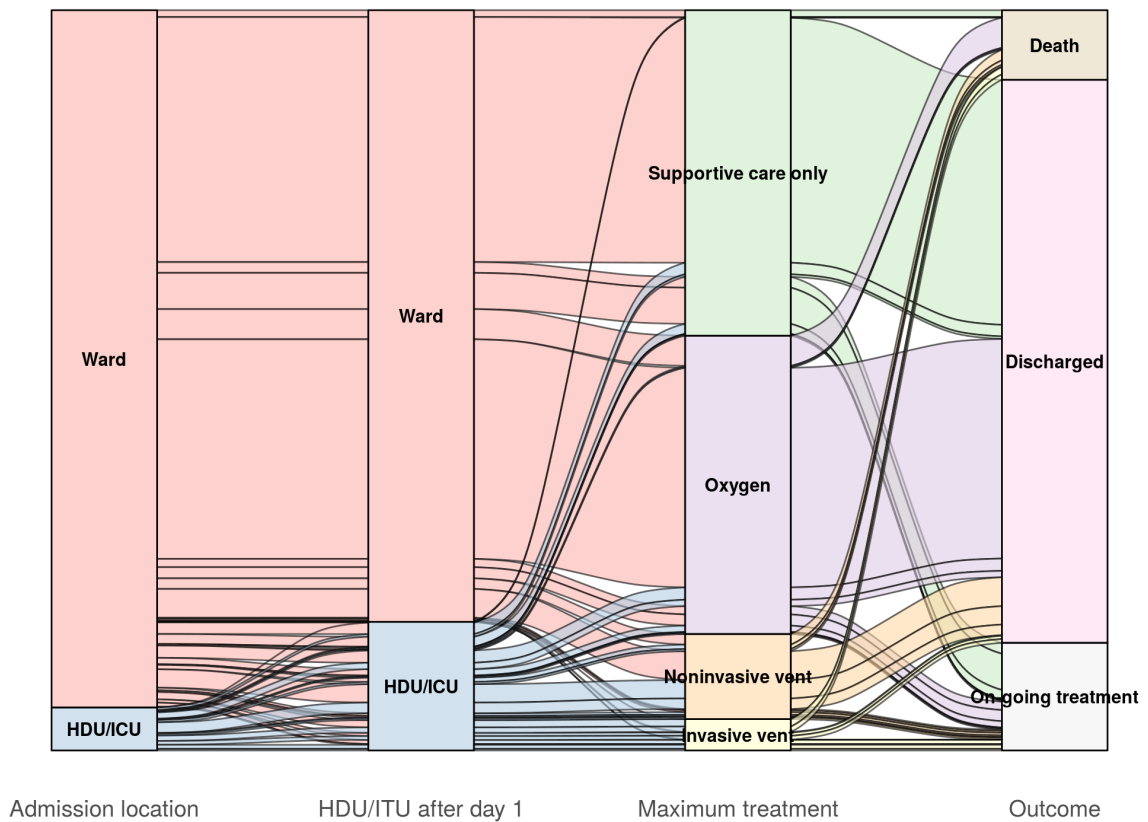


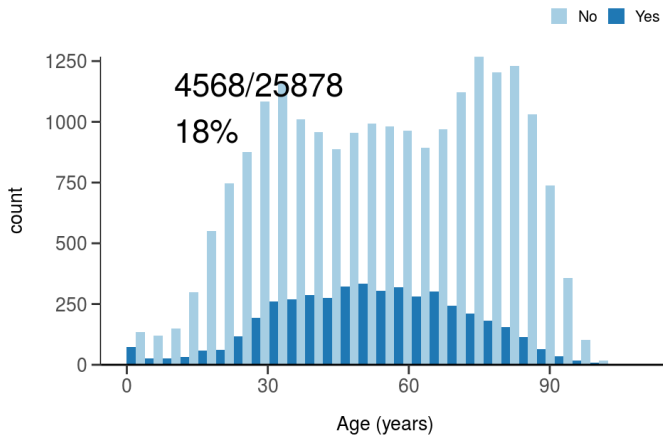
Figure 5B - Patients admitted ≥ 14 days and ≤ 28 days ago

N = 1268

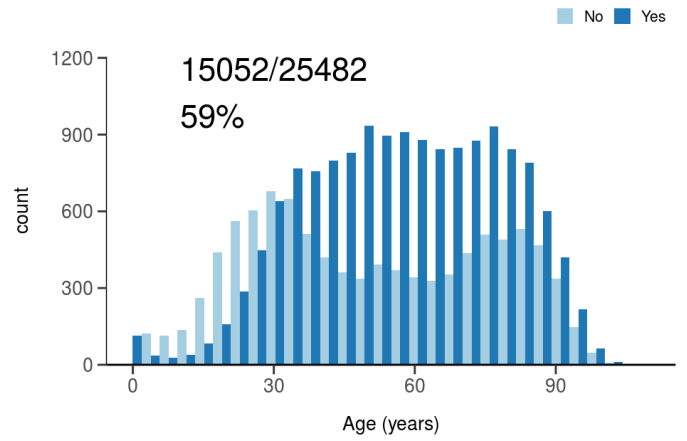
Treatment

Figure 6

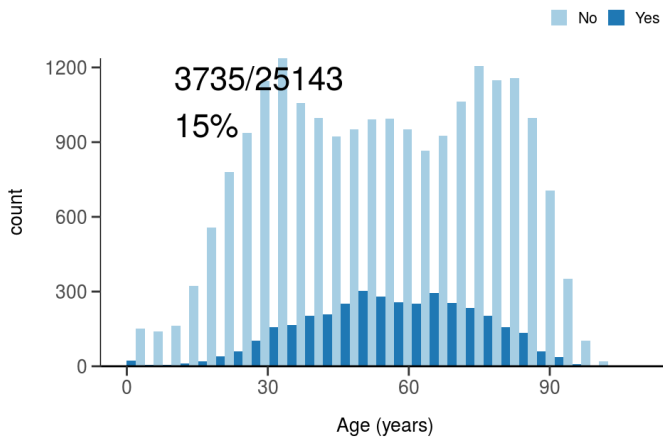
ICU/HDU admission
Figure 10A



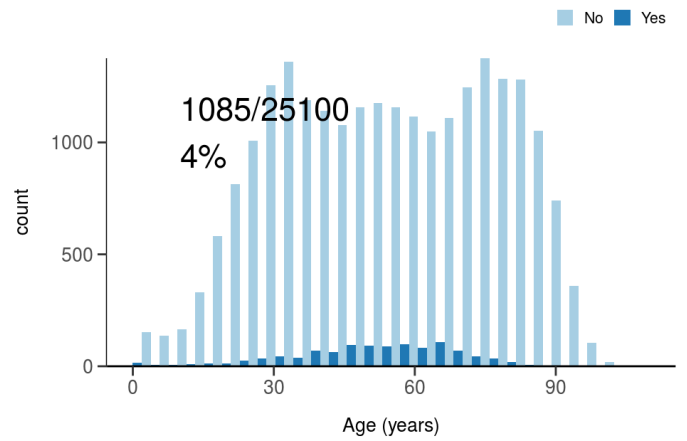
High flow oxygen
Figure 10B



Noninvasive ventilation
Figure 10C



Invasive ventilation
Figure 10D



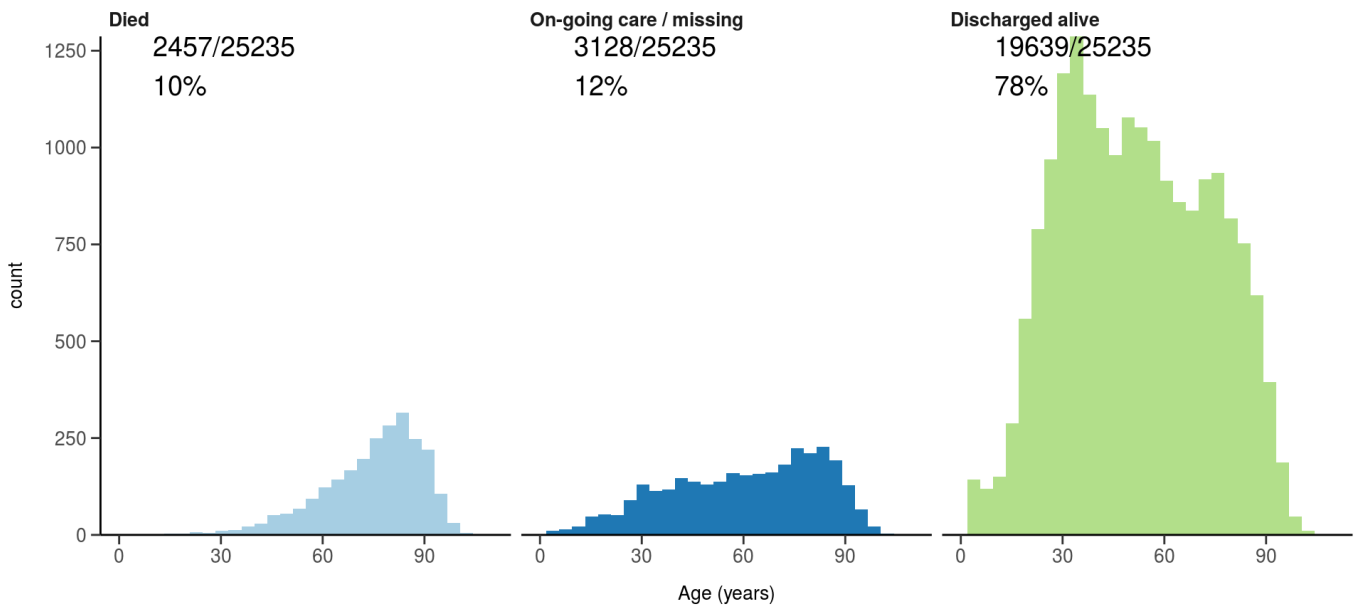
Status in patients admitted ≥ 14 days from today

Figure 7

Where outcome is not reported, on-going care is assumed.

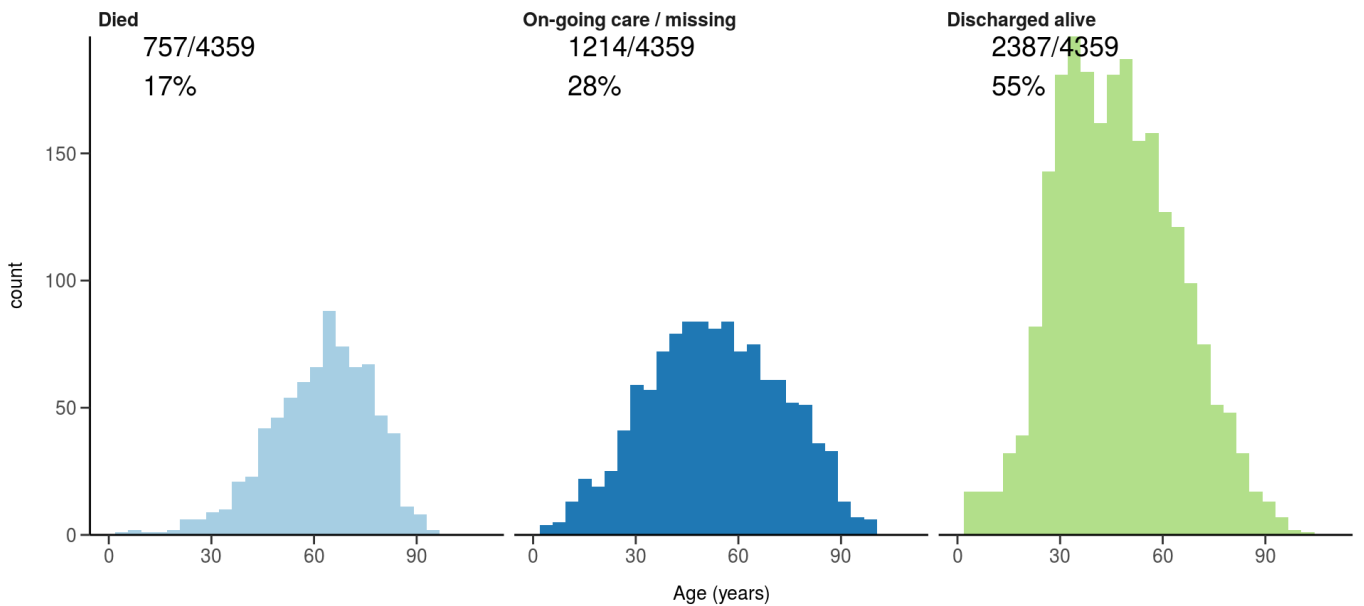
All: status in patients admitted ≥ 14 days ago

Figure 11A



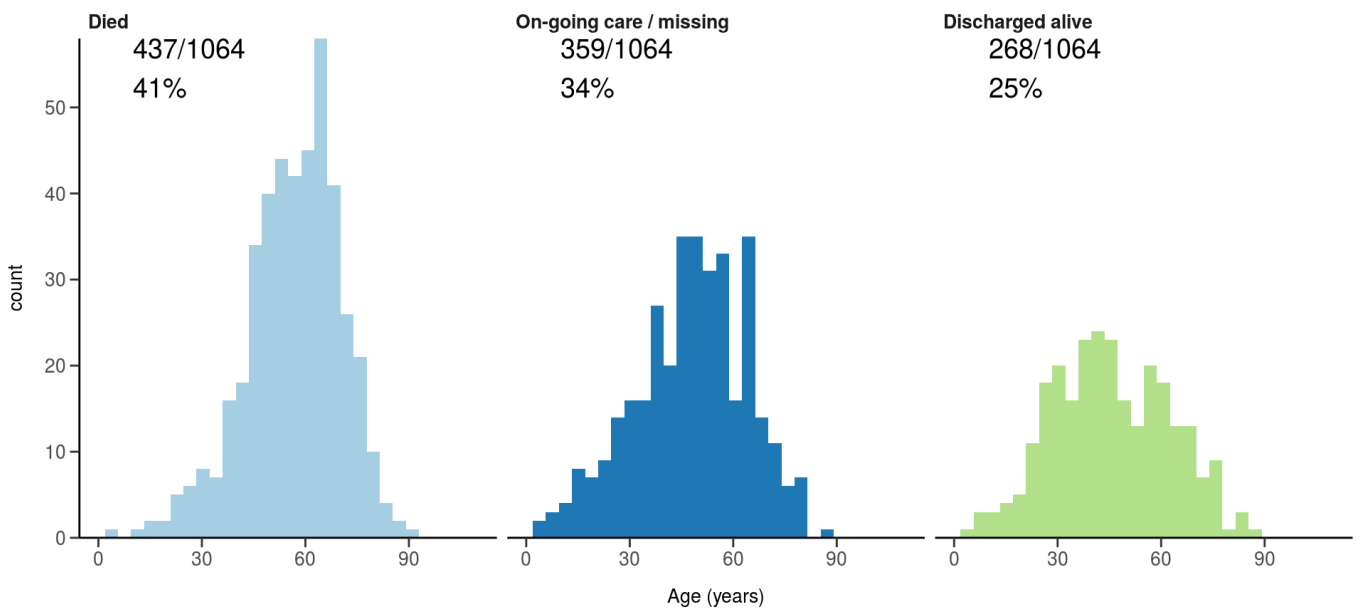
ICU/HDU admissions: status in patients admitted ≥ 14 days ago

Figure 11B



Invasive ventilation: status in patients admitted ≥ 14 days ago

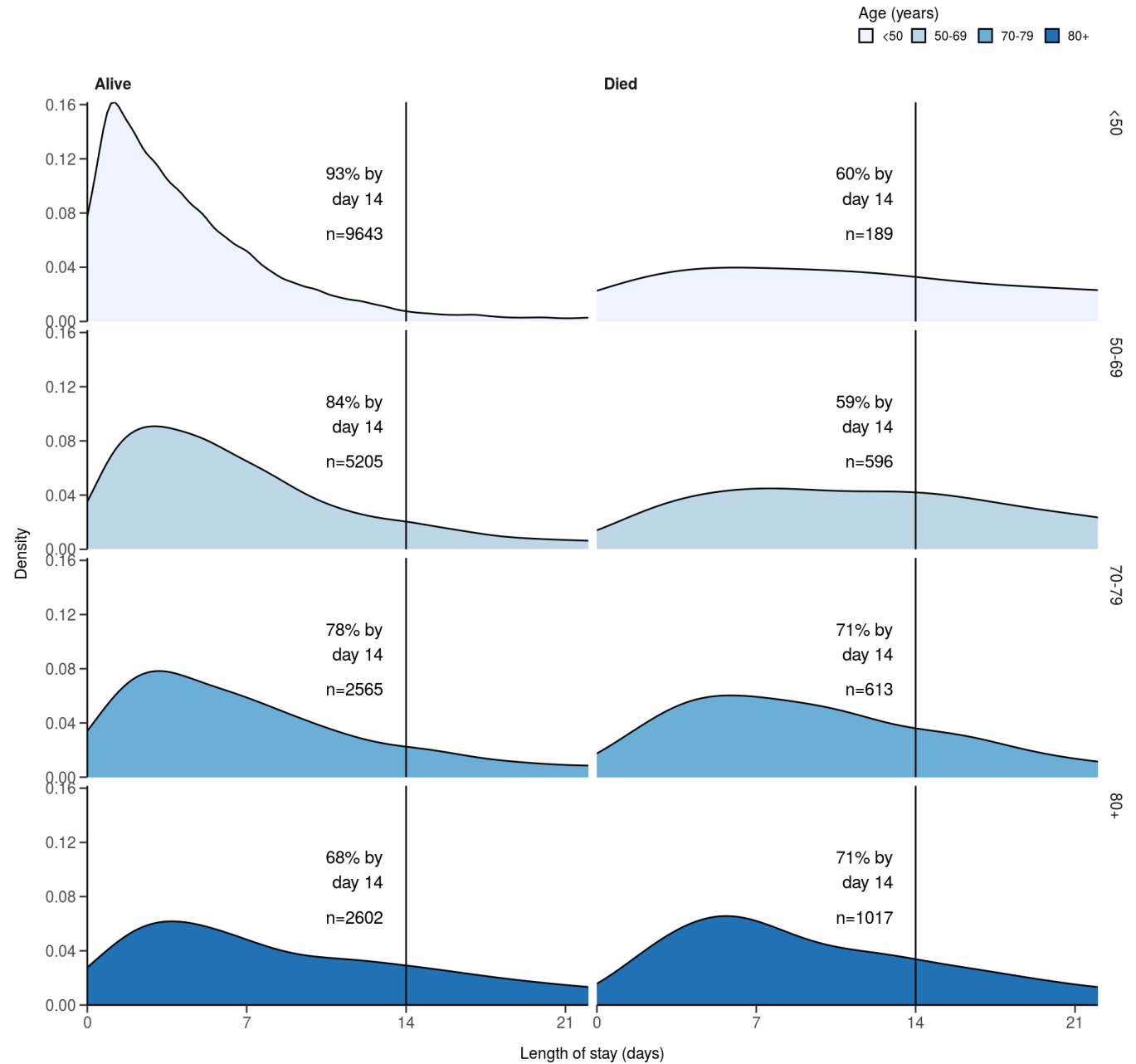
Figure 11c



Length of stay stratified by age

####Figure 8

Length of stay stratified by age and mortality
Proportion who reach outcome by day 14 shown



Data

Table for figure 2A

age.factor	sex	status	n
0-4	Male	Discharged	354
0-4	Male	On-going care	24
0-4	Male	Died	3
0-4	Female	Discharged	309

age.factor	sex	status	n
0-4	Female	On-going care	24
0-4	Female	Died	4
5-9	Male	Discharged	94
5-9	Male	On-going care	9
5-9	Female	Discharged	66
5-9	Female	On-going care	8
5-9	Female	Died	2
10-14	Male	Discharged	125
10-14	Male	On-going care	21
10-14	Female	Discharged	132
10-14	Female	On-going care	26
10-14	Female	Died	2
15-19	Male	Discharged	251
15-19	Male	On-going care	32
15-19	Male	Died	1
15-19	Female	Discharged	339
15-19	Female	On-going care	34
15-19	Female	Died	3
15-19	Not specified	On-going care	1
20-24	Male	Discharged	406
20-24	Male	On-going care	35
20-24	Male	Died	6
20-24	Female	Discharged	625
20-24	Female	On-going care	40
20-24	Female	Died	2
25-29	Male	Discharged	552
25-29	Male	On-going care	57
25-29	Male	Died	4
25-29	Female	Discharged	784
25-29	Female	On-going care	93
25-29	Female	Died	6
25-29	Not specified	Discharged	1

age.factor	sex	status	n
25-29	NA	Discharged	1
30-34	Male	Discharged	737
30-34	Male	On-going care	53
30-34	Male	Died	6
30-34	Female	Discharged	916
30-34	Female	On-going care	98
30-34	Female	Died	8
30-34	Not specified	Discharged	2
30-34	NA	Died	1
35-39	Male	Discharged	799
35-39	Male	On-going care	87
35-39	Male	Died	14
35-39	Female	Discharged	784
35-39	Female	On-going care	105
35-39	Female	Died	12
35-39	Not specified	Discharged	1
35-39	Not specified	On-going care	1
35-39	NA	Discharged	2
40-44	Male	Discharged	814
40-44	Male	On-going care	126
40-44	Male	Died	31
40-44	Female	Discharged	564
40-44	Female	On-going care	93
40-44	Female	Died	13
40-44	Not specified	Discharged	3
40-44	Not specified	On-going care	1
45-49	Male	Discharged	797
45-49	Male	On-going care	115
45-49	Male	Died	49
45-49	Female	Discharged	545
45-49	Female	On-going care	75
45-49	Female	Died	28

age.factor	sex	status	n
45-49	Not specified	On-going care	1
50-54	Male	Discharged	780
50-54	Male	On-going care	106
50-54	Male	Died	54
50-54	Female	Discharged	625
50-54	Female	On-going care	85
50-54	Female	Died	29
50-54	Not specified	Discharged	1
50-54	NA	Discharged	2
55-59	Male	Discharged	736
55-59	Male	On-going care	133
55-59	Male	Died	88
55-59	Female	Discharged	597
55-59	Female	On-going care	104
55-59	Female	Died	43
55-59	Not specified	Died	1
55-59	NA	Discharged	2
60-64	Male	Discharged	691
60-64	Male	On-going care	144
60-64	Male	Died	112
60-64	Female	Discharged	484
60-64	Female	On-going care	93
60-64	Female	Died	63
60-64	Not specified	On-going care	1
65-69	Male	Discharged	667
65-69	Male	On-going care	122
65-69	Male	Died	140
65-69	Female	Discharged	448
65-69	Female	On-going care	92
65-69	Female	Died	74
65-69	Not specified	Discharged	1
65-69	Not specified	On-going care	1

age.factor	sex	status	n
70-74	Male	Discharged	723
70-74	Male	On-going care	178
70-74	Male	Died	158
70-74	Female	Discharged	556
70-74	Female	On-going care	114
70-74	Female	Died	124
70-74	NA	Discharged	2
75-79	Male	Discharged	679
75-79	Male	On-going care	193
75-79	Male	Died	219
75-79	Female	Discharged	469
75-79	Female	On-going care	134
75-79	Female	Died	121
75-79	Not specified	Discharged	1
75-79	Not specified	Died	2
75-79	NA	Discharged	1
80-84	Male	Discharged	521
80-84	Male	On-going care	176
80-84	Male	Died	240
80-84	Female	Discharged	494
80-84	Female	On-going care	148
80-84	Female	Died	171
80-84	Not specified	Discharged	1
80-84	NA	Discharged	1
80-84	NA	Died	1
85-89	Male	Discharged	410
85-89	Male	On-going care	152
85-89	Male	Died	214
85-89	Female	Discharged	384
85-89	Female	On-going care	131
85-89	Female	Died	129
85-89	Not specified	Discharged	1

age.factor	sex	status	n
85-89	NA	Discharged	1
90+	Male	Discharged	243
90+	Male	On-going care	95
90+	Male	Died	145
90+	Female	Discharged	300
90+	Female	On-going care	109
90+	Female	Died	146

Table for figure 2B

age.factor	sex	status	n
0-4	Male	Discharged	17
0-4	Male	On-going care	2
0-4	Female	Discharged	21
0-4	Female	On-going care	3
5-9	Male	Discharged	9
5-9	Male	On-going care	1
5-9	Female	Discharged	7
5-9	Female	On-going care	2
10-14	Male	Discharged	12
10-14	Male	On-going care	1
10-14	Female	Discharged	14
10-14	Female	On-going care	4
15-19	Male	Discharged	12
15-19	Male	On-going care	4
15-19	Female	Discharged	13
15-19	Female	On-going care	4
15-19	Female	Died	1
20-24	Male	Discharged	7
20-24	Male	On-going care	2
20-24	Female	Discharged	14
20-24	Female	On-going care	6
25-29	Male	Discharged	16
25-29	Male	On-going care	1

age.factor	sex	status	n
25-29	Female	Discharged	36
25-29	Female	On-going care	6
30-34	Male	Discharged	11
30-34	Female	Discharged	33
30-34	Female	On-going care	12
35-39	Male	Discharged	22
35-39	Male	On-going care	8
35-39	Female	Discharged	31
35-39	Female	On-going care	9
40-44	Male	Discharged	26
40-44	Male	On-going care	8
40-44	Male	Died	2
40-44	Female	Discharged	29
40-44	Female	On-going care	8
40-44	Not specified	Discharged	1
45-49	Male	Discharged	21
45-49	Male	On-going care	9
45-49	Male	Died	2
45-49	Female	Discharged	19
45-49	Female	On-going care	8
50-54	Male	Discharged	35
50-54	Male	On-going care	8
50-54	Male	Died	1
50-54	Female	Discharged	18
50-54	Female	On-going care	7
50-54	Female	Died	1
55-59	Male	Discharged	32
55-59	Male	On-going care	15
55-59	Male	Died	2
55-59	Female	Discharged	26
55-59	Female	On-going care	10
60-64	Male	Discharged	21

age.factor	sex	status	n
60-64	Male	On-going care	7
60-64	Male	Died	7
60-64	Female	Discharged	17
60-64	Female	On-going care	12
65-69	Male	Discharged	27
65-69	Male	On-going care	18
65-69	Male	Died	8
65-69	Female	Discharged	26
65-69	Female	On-going care	9
65-69	Female	Died	5
70-74	Male	Discharged	43
70-74	Male	On-going care	17
70-74	Male	Died	10
70-74	Female	Discharged	22
70-74	Female	On-going care	12
70-74	Female	Died	2
75-79	Male	Discharged	26
75-79	Male	On-going care	20
75-79	Male	Died	12
75-79	Female	Discharged	17
75-79	Female	On-going care	19
75-79	Female	Died	6
80-84	Male	Discharged	24
80-84	Male	On-going care	18
80-84	Male	Died	14
80-84	Female	Discharged	31
80-84	Female	On-going care	17
80-84	Female	Died	6
80-84	NA	Discharged	1
85-89	Male	Discharged	24
85-89	Male	On-going care	17
85-89	Male	Died	15

age.factor	sex	status	n
85-89	Female	Discharged	18
85-89	Female	On-going care	11
85-89	Female	Died	3
90+	Male	Discharged	17
90+	Male	On-going care	8
90+	Male	Died	7
90+	Female	Discharged	18
90+	Female	On-going care	5
90+	Female	Died	5

Table for figure 4A

day	status	n
1	Discharged	1944
1	Ward	15110
1	Ward (O2)	7647
1	HDU/ICU	493
1	HDU/ICU (O2)	189
1	HDU/ICU (noninvasive)	600
1	ICU (ventilated)	215
1	Died	149
2	Discharged	4713
2	Ward	11531
2	Ward (O2)	6549
2	HDU/ICU	382
2	HDU/ICU (O2)	169
2	HDU/ICU (noninvasive)	522
2	ICU (ventilated)	154
2	Died	217
3	Discharged	6661
3	Ward	9759
3	Ward (O2)	5983
3	HDU/ICU	348
3	HDU/ICU (O2)	185

day	status	n
3	HDU/ICU (noninvasive)	528
3	ICU (ventilated)	154
3	Died	309
4	Discharged	8690
4	Ward	8245
4	Ward (O2)	5371
4	HDU/ICU	321
4	HDU/ICU (O2)	179
4	HDU/ICU (noninvasive)	517
4	ICU (ventilated)	143
4	Died	424
5	Discharged	10467
5	Ward	7024
5	Ward (O2)	4702
5	HDU/ICU	302
5	HDU/ICU (O2)	170
5	HDU/ICU (noninvasive)	499
5	ICU (ventilated)	139
5	Died	561
6	Discharged	12038
6	Ward	6022
6	Ward (O2)	4040
6	HDU/ICU	277
6	HDU/ICU (O2)	159
6	HDU/ICU (noninvasive)	477
6	ICU (ventilated)	126
6	Died	706
7	Discharged	13339
7	Ward	5182
7	Ward (O2)	3498
7	HDU/ICU	252
7	HDU/ICU (O2)	141

day	status	n
7	HDU/ICU (noninvasive)	444
7	ICU (ventilated)	120
7	Died	853
8	Discharged	14498
8	Ward	4490
8	Ward (O2)	2983
8	HDU/ICU	221
8	HDU/ICU (O2)	118
8	HDU/ICU (noninvasive)	403
8	ICU (ventilated)	119
8	Died	982
9	Discharged	15365
9	Ward	3981
9	Ward (O2)	2566
9	HDU/ICU	202
9	HDU/ICU (O2)	102
9	HDU/ICU (noninvasive)	365
9	ICU (ventilated)	112
9	Died	1105
10	Discharged	16092
10	Ward	3560
10	Ward (O2)	2206
10	HDU/ICU	191
10	HDU/ICU (O2)	89
10	HDU/ICU (noninvasive)	327
10	ICU (ventilated)	108
10	Died	1216

Table for figure 4B

day	status	n
1	Discharged	51
1	Ward	788
1	Ward (O2)	411

day	status	n
1	HDU/ICU	18
1	HDU/ICU (O2)	10
1	HDU/ICU (noninvasive)	21
1	ICU (ventilated)	9
1	Died	2
2	Discharged	222
2	Ward	462
2	Ward (O2)	283
2	HDU/ICU	11
2	HDU/ICU (O2)	8
2	HDU/ICU (noninvasive)	13
2	ICU (ventilated)	3
2	Died	8
3	Discharged	323
3	Ward	371
3	Ward (O2)	247
3	HDU/ICU	11
3	HDU/ICU (O2)	8
3	HDU/ICU (noninvasive)	13
3	ICU (ventilated)	4
3	Died	13
4	Discharged	417
4	Ward	294
4	Ward (O2)	218
4	HDU/ICU	11
4	HDU/ICU (O2)	8
4	HDU/ICU (noninvasive)	13
4	ICU (ventilated)	2
4	Died	26
5	Discharged	487
5	Ward	256
5	Ward (O2)	176

day	status	n
5	HDU/ICU	11
5	HDU/ICU (O2)	8
5	HDU/ICU (noninvasive)	12
5	ICU (ventilated)	2
5	Died	37
6	Discharged	563
6	Ward	206
6	Ward (O2)	148
6	HDU/ICU	7
6	HDU/ICU (O2)	6
6	HDU/ICU (noninvasive)	12
6	ICU (ventilated)	2
6	Died	45
7	Discharged	621
7	Ward	172
7	Ward (O2)	117
7	HDU/ICU	7
7	HDU/ICU (O2)	5
7	HDU/ICU (noninvasive)	11
7	ICU (ventilated)	2
7	Died	53
8	Discharged	676
8	Ward	139
8	Ward (O2)	89
8	HDU/ICU	5
8	HDU/ICU (O2)	5
8	HDU/ICU (noninvasive)	10
8	ICU (ventilated)	2
8	Died	62
9	Discharged	724
9	Ward	102
9	Ward (O2)	73

day	status	n
9	HDU/ICU	5
9	HDU/ICU (O2)	3
9	HDU/ICU (noninvasive)	10
9	ICU (ventilated)	2
9	Died	69
10	Discharged	752
10	Ward	81
10	Ward (O2)	60
10	HDU/ICU	4
10	HDU/ICU (O2)	2
10	HDU/ICU (noninvasive)	8
10	ICU (ventilated)	1
10	Died	80