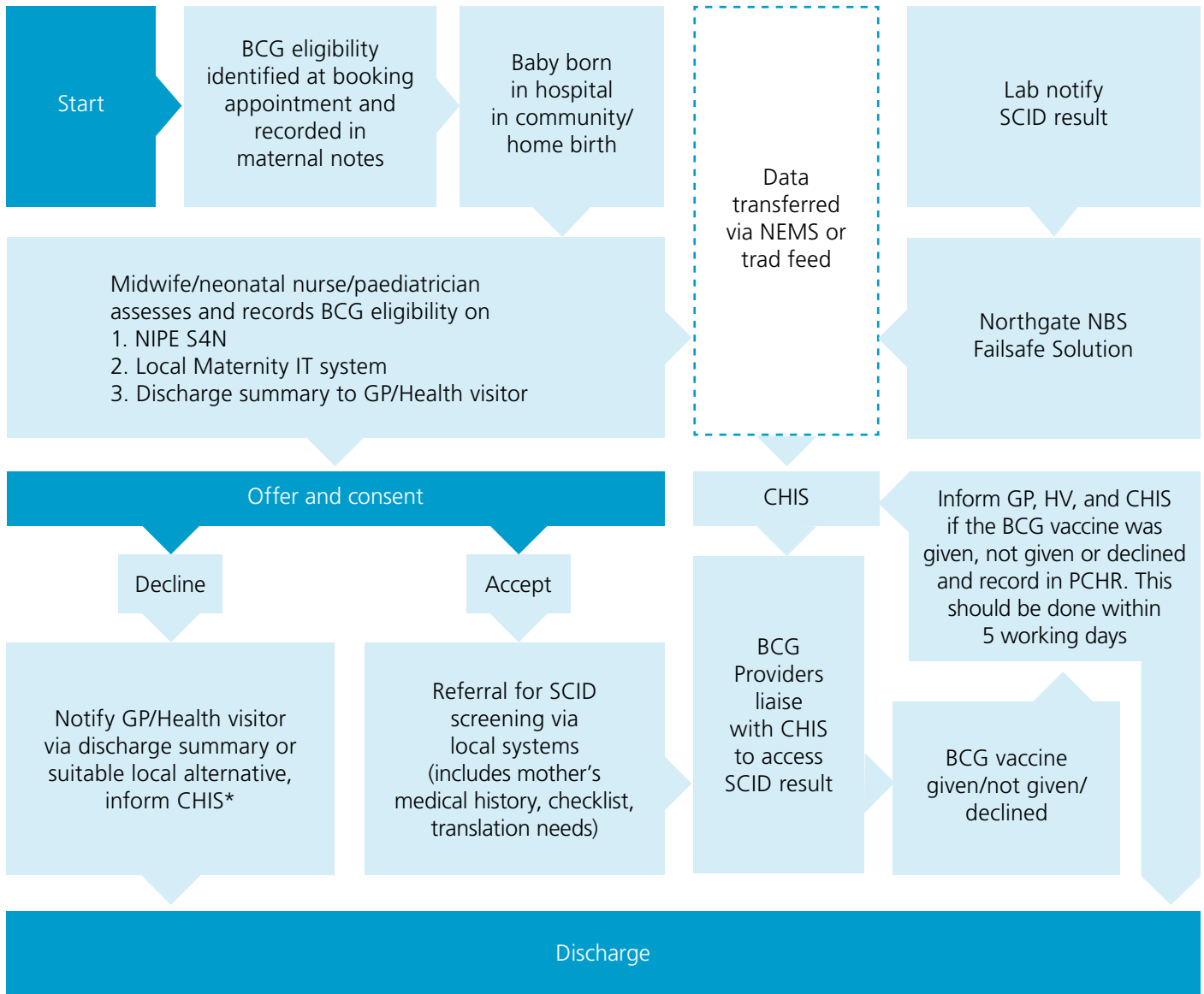




BCG data flowchart



* Follow local procedures for declining

Glossary

CHIS: Child Health Information System

IT: Information technology

NBS: Newborn Blood Spot

NEMS: National Events Messaging System

SCID: Severe Combined immunodeficient Syndrome

NIPE S4N: National IT system for the Newborn and Physical Examination screening programme

PCHR: Personal Child Health Record aka 'Red Book'