



UK Health
Security
Agency

GP Out-of-Hours Syndromic Surveillance System Bulletin (England)

2021 Week 39

Key messages

Data reported to: 03 October 2021

During week 39, GP out-of-hours contacts for respiratory indicators continued to increase, particularly in young children.

Syndromic indicators at a glance

Table 1: The current trend (based on previous weeks, not only the current week) and the level (compared to the expected baseline), of each indicator included in this bulletin.

Indicator	Trend ¹	Level
Total contacts (Figure 1)	No trend	No baseline
Acute respiratory infections (Figure 2)	Increasing	Above baseline
Influenza-like illness (Figure 3)	No trend	Above baseline
Acute bronchitis/bronchiolitis (Figure 4)	Increasing	Above baseline
Difficulty breathing/wheeze/asthma (Figure 5)	Increasing	Above baseline
Fever (Figure 6)	Decreasing	Above baseline
Acute pharyngitis (Figure 7)	No trend	Below baseline
Gastroenteritis (Figure 8)	No trend	Below baseline
Diarrhoea (Figure 9)	Decreasing	Below baseline
Vomiting (Figure 10)	No trend	Above baseline
Chest pain/myocardial infarction (Figure 11)	No trend	Similar to baseline

¹ Current trend reports on the trend seen over previous weeks

Contents

Key messages	2
Syndromic indicators at a glance	2
Contents	3
About this syndromic surveillance system	4
Total contacts	5
Respiratory conditions	7
Acute respiratory infections	7
Influenza-like illness	9
Acute bronchitis/bronchiolitis	11
Difficulty breathing, wheeze or asthma	13
Fever	15
Acute pharyngitis	17
Gastrointestinal conditions	19
Gastroenteritis	19
Diarrhoea	21
Vomiting	23
Cardiac conditions.....	25
Chest pain (including myocardial infarction)	25
Seasonal environmental conditions	27
No weather watch in place.....	27
Notes and caveats	28
Acknowledgements	29
About the UK Health Security Agency	30

About this syndromic surveillance system

This bulletin presents data from the UK Health Security Agency (UKHSA) GP out-of-hours\ unscheduled care syndromic surveillance system.

Syndromic surveillance can be used to:

- assess current trends
- assess current trends and levels compared to historical baselines
- compare trends between age groups/areas

Syndromic surveillance should not be used to:

- estimate total burden or number of 'cases' of a condition (see **Notes and caveats**)
- compare levels between age groups/areas

Fully anonymised, daily GP out-of-hours (OOH) and unscheduled care service provider data are analysed and reported here, to identify and describe trends for a variety of syndromic indicators:

- syndromic indicators include groupings such as acute respiratory infections, fever and gastroenteritis
- syndromic indicators are based on:
 - diagnoses recorded during OOH patient contacts
 - diagnoses are based on signs/symptoms and not laboratory confirmed
 - not all contacts include a diagnosis
 - some contacts include more than one diagnosis, so may be included in more than one syndromic indicator
- **Key messages** describes any notable trends nationally (England), by age group and/or by geographical area (based on UKHSA centres)
- the full list of syndromic indicators reported here, along with their current level and trend, are summarised in **Table 1**
- charts are provided for each syndromic indicator, on a national basis, by age group and by geographical area (UKHSA centre). Each chart includes a year of data with:
 - 7-day moving averages (adjusted for weekends and bank holidays) to aid in the identification of trend
 - statistical baselines (where available) to aid in the assessment of level compared to historical expectations

For further information please see the **Notes and caveats** section.

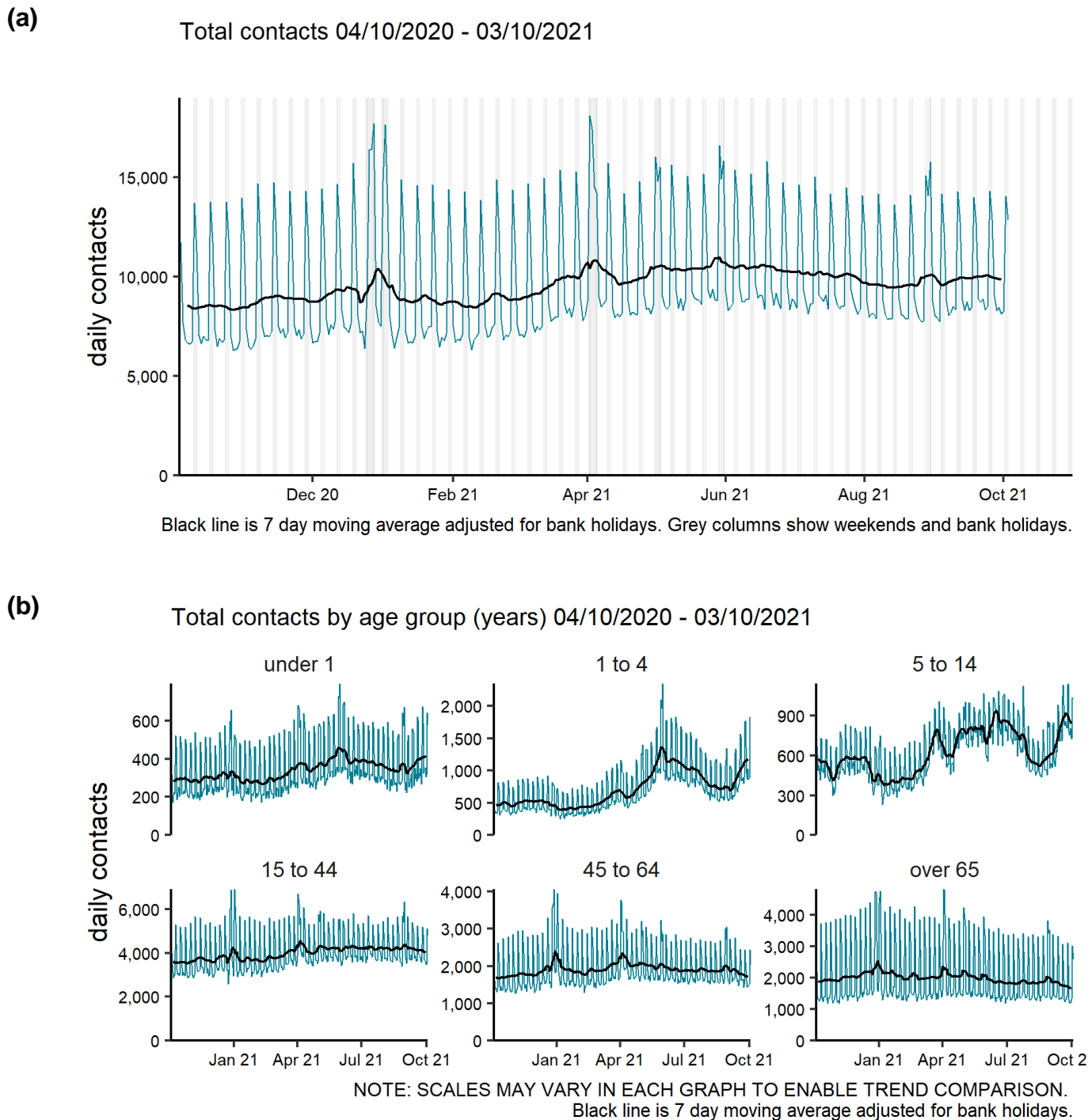
[Previous weekly bulletins](#) are available on GOV.UK.

Data quality issues of note this week

No issues identified.

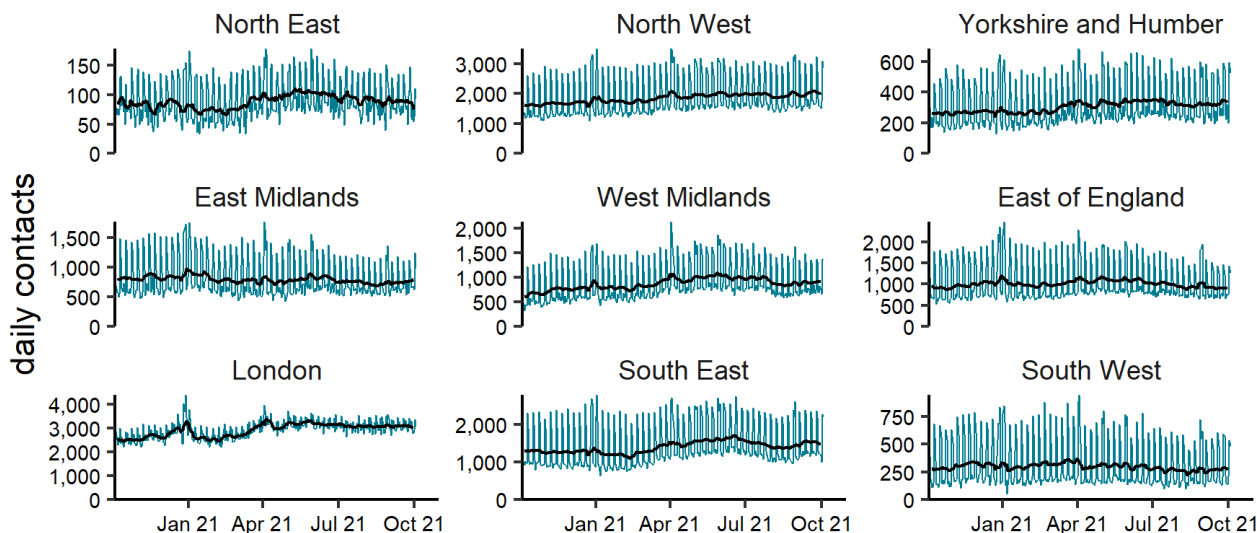
Total contacts

Figure 1: Daily number of GP out-of-hours and unscheduled contacts (with 7-day moving average adjusted for bank holidays) recorded in this sentinel syndromic surveillance system in England (a) nationally, (b) by age and (c) by UKHSA Centre.



(c)

Total contacts by centre 04/10/2020 - 03/10/2021



NOTE: SCALES MAY VARY IN EACH GRAPH TO ENABLE TREND COMPARISON.
Black line is 7 day moving average adjusted for bank holidays.

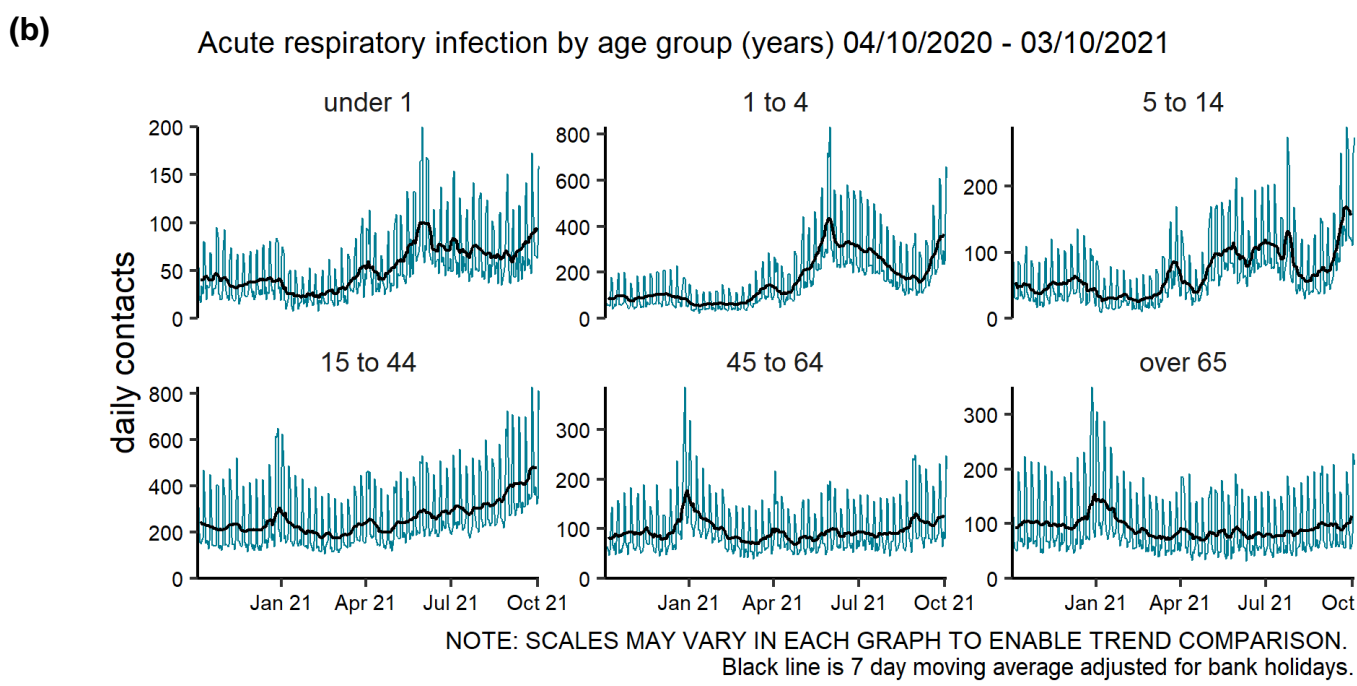
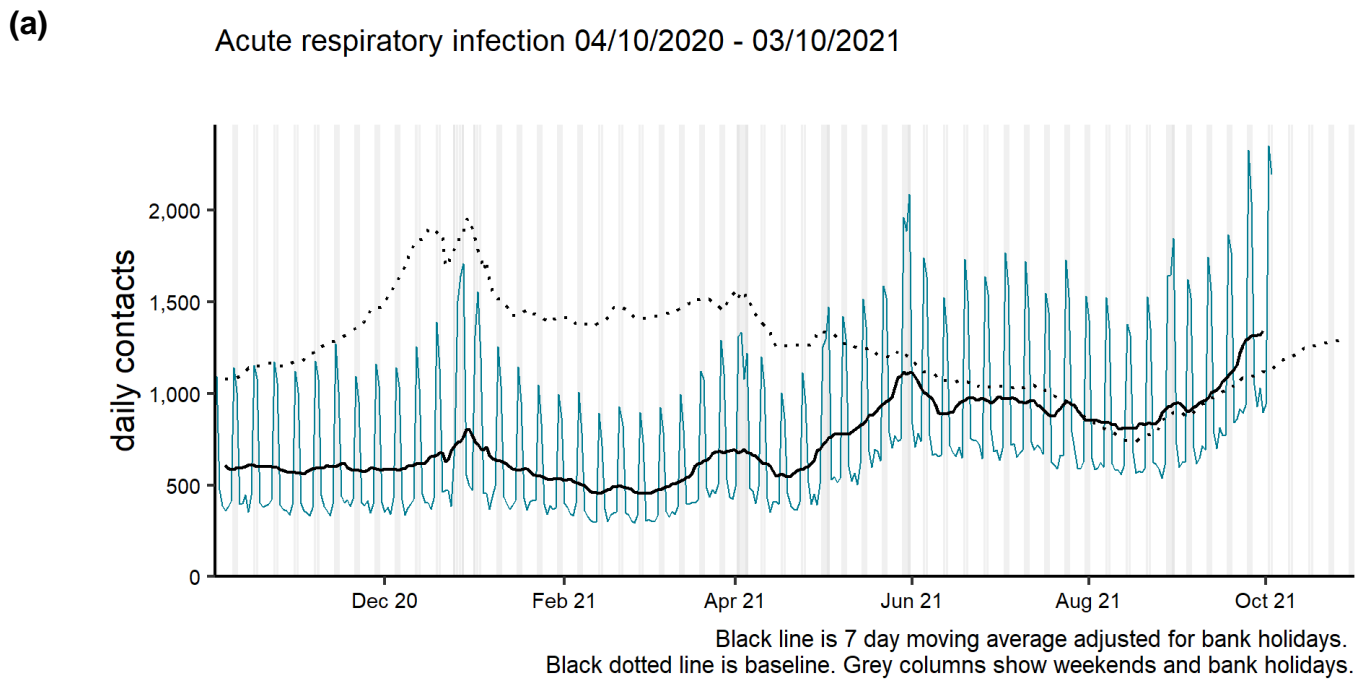
Table 2: The number of GP out-of-hours contacts in England recorded each day in the most recent week.

Date	Number of contacts
27 September 2021	24815
28 September 2021	23064
29 September 2021	22786
30 September 2021	22083
01 October 2021	22968
02 October 2021	36632
03 October 2021	32727

Respiratory conditions

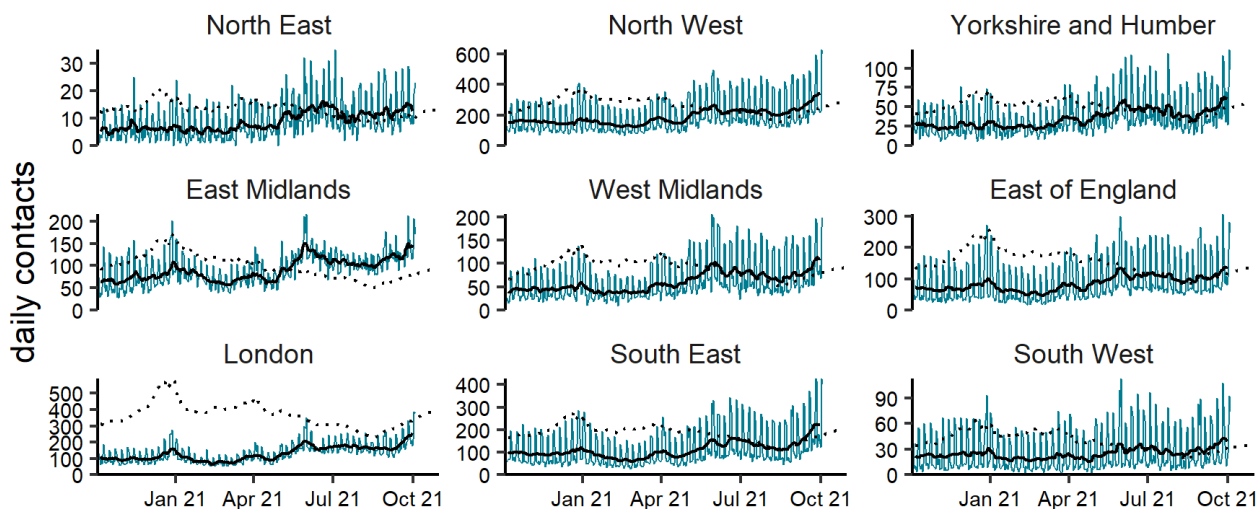
Acute respiratory infections

Figure 2: Daily number of GP out-of-hours and unscheduled contacts (and 7-day moving average adjusted for bank holidays) for acute respiratory infections, England (a) nationally, (b) by age and (c) by UKHSA Centre.



(c)

Acute respiratory infection by centre 04/10/2020 - 03/10/2021

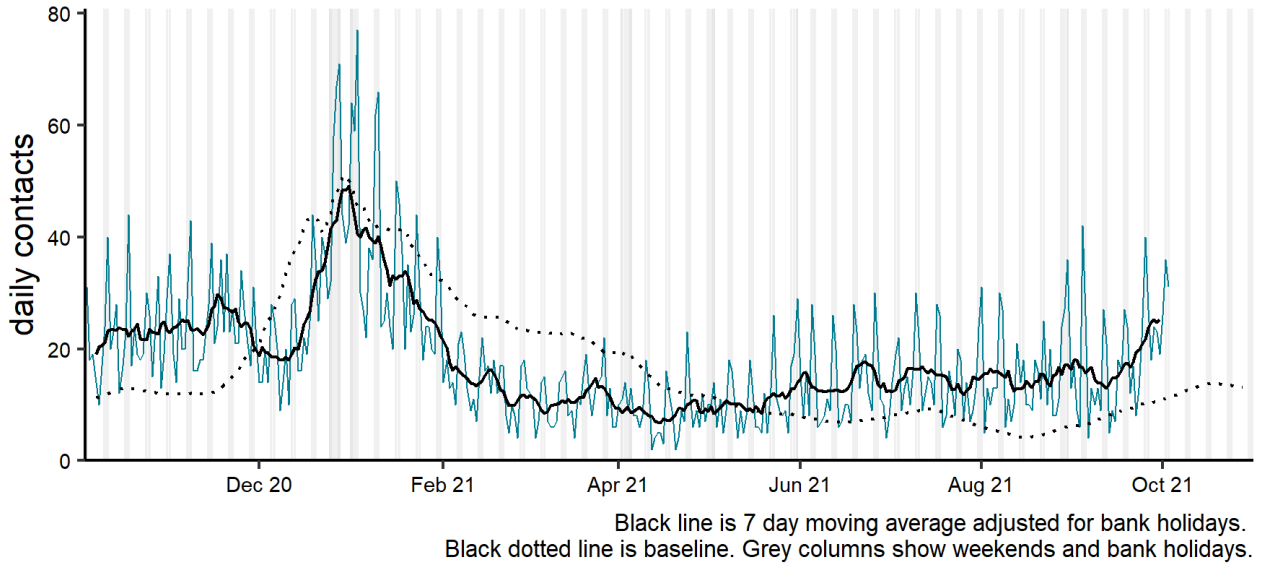


NOTE: SCALES MAY VARY IN EACH GRAPH TO ENABLE TREND COMPARISON.
Black line is 7 day moving average adjusted for bank holidays.
Black dotted line is baseline.

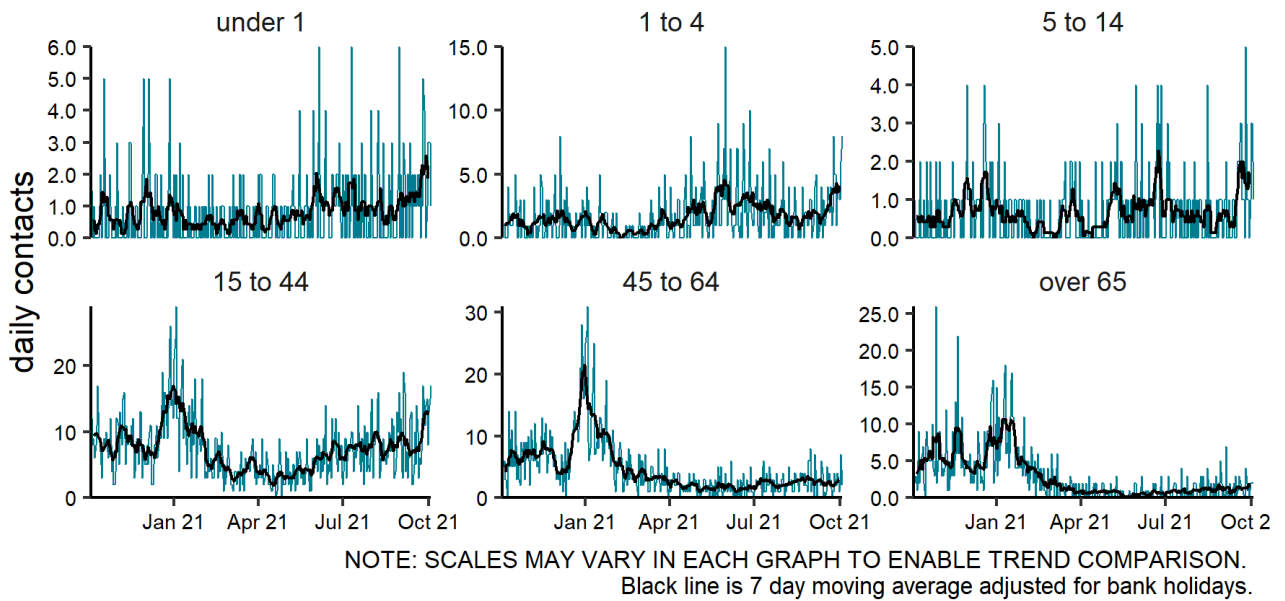
Influenza-like illness

Figure 3: Daily number of GP out-of-hours and unscheduled contacts (and 7-day moving average adjusted for bank holidays) for influenza-like illness, England (a) nationally, (b) by age and (c) by UKHSA Centre.

(a) Influenza-like illness 04/10/2020 - 03/10/2021

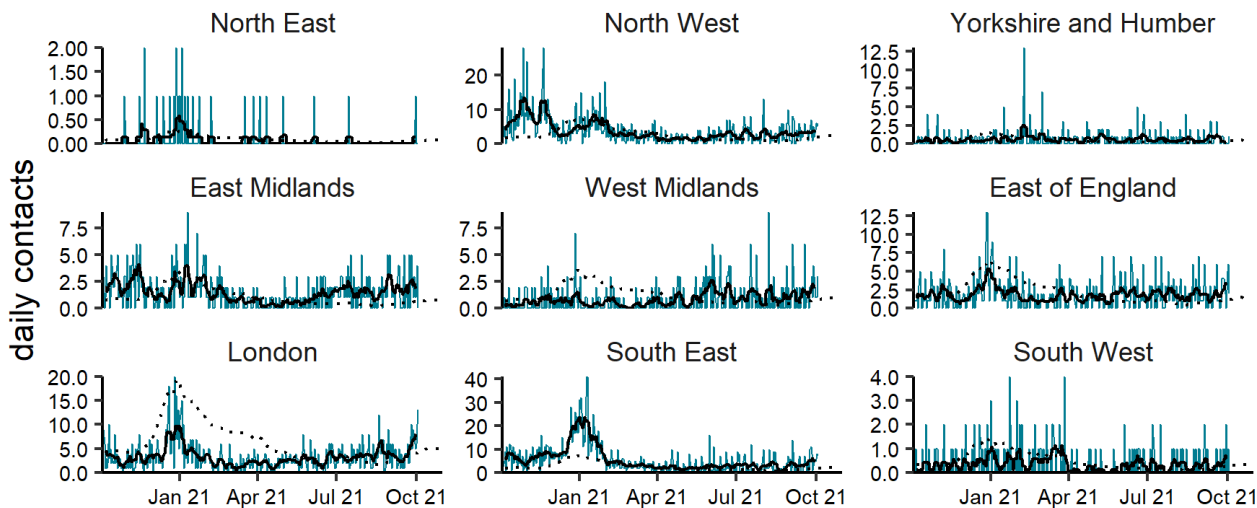


(b) Influenza-like illness by age group (years) 04/10/2020 - 03/10/2021



(c)

Influenza-like illness by centre 04/10/2020 - 03/10/2021

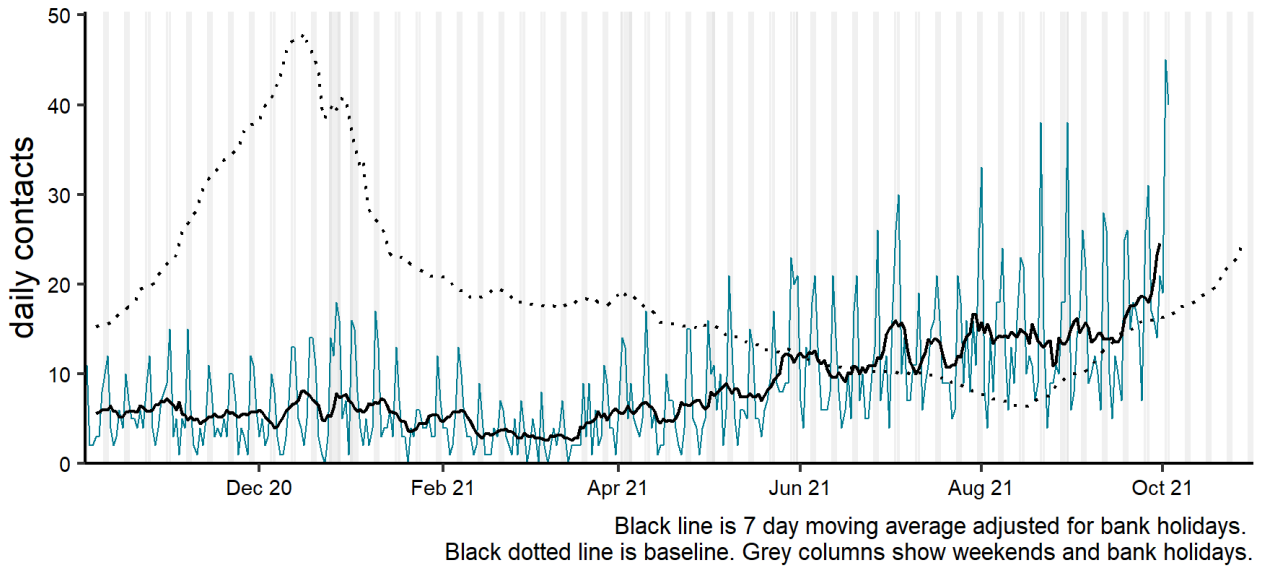


NOTE: SCALES MAY VARY IN EACH GRAPH TO ENABLE TREND COMPARISON.
Black line is 7 day moving average adjusted for bank holidays.
Black dotted line is baseline.

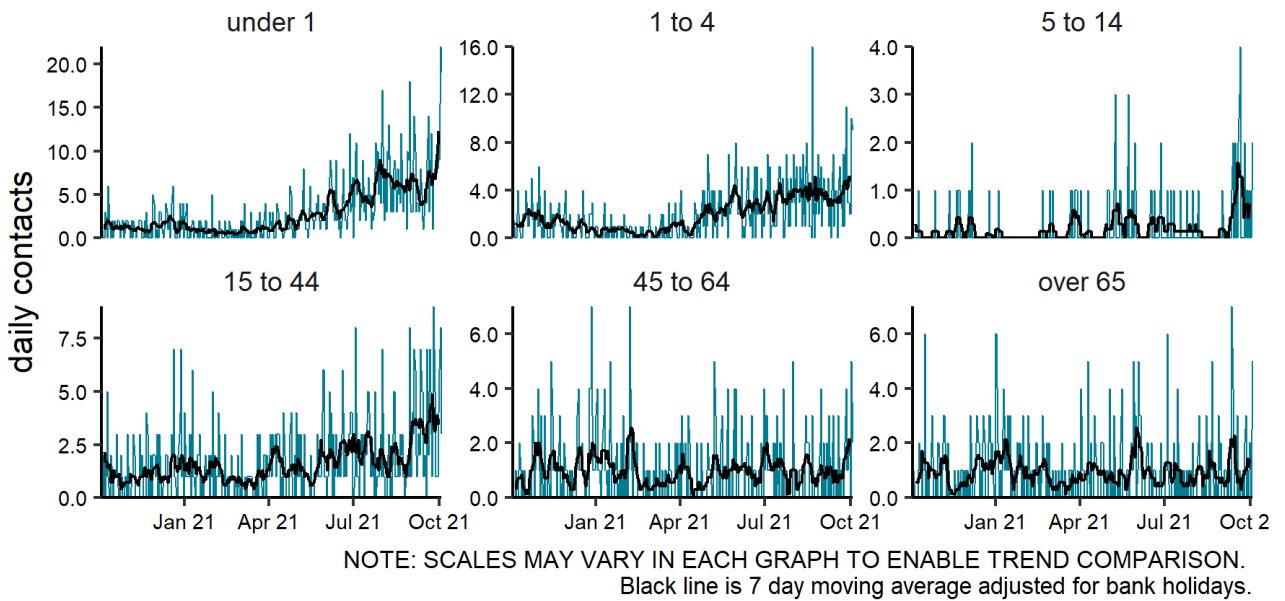
Acute bronchitis/bronchiolitis

Figure 4: Daily number of GP out-of-hours and unscheduled contacts (and 7-day moving average adjusted for bank holidays) for acute bronchitis/bronchiolitis, England (a) nationally, (b) by age and (c) by UKHSA Centre.

(a) Acute bronchitis 04/10/2020 - 03/10/2021

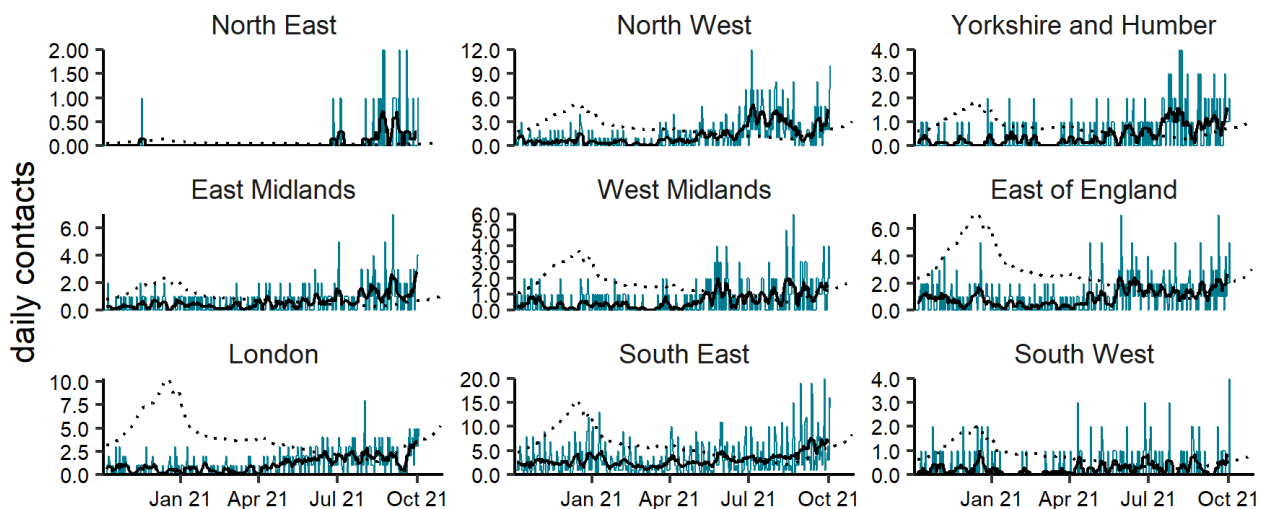


(b) Acute bronchitis by age group (years) 04/10/2020 - 03/10/2021



(c)

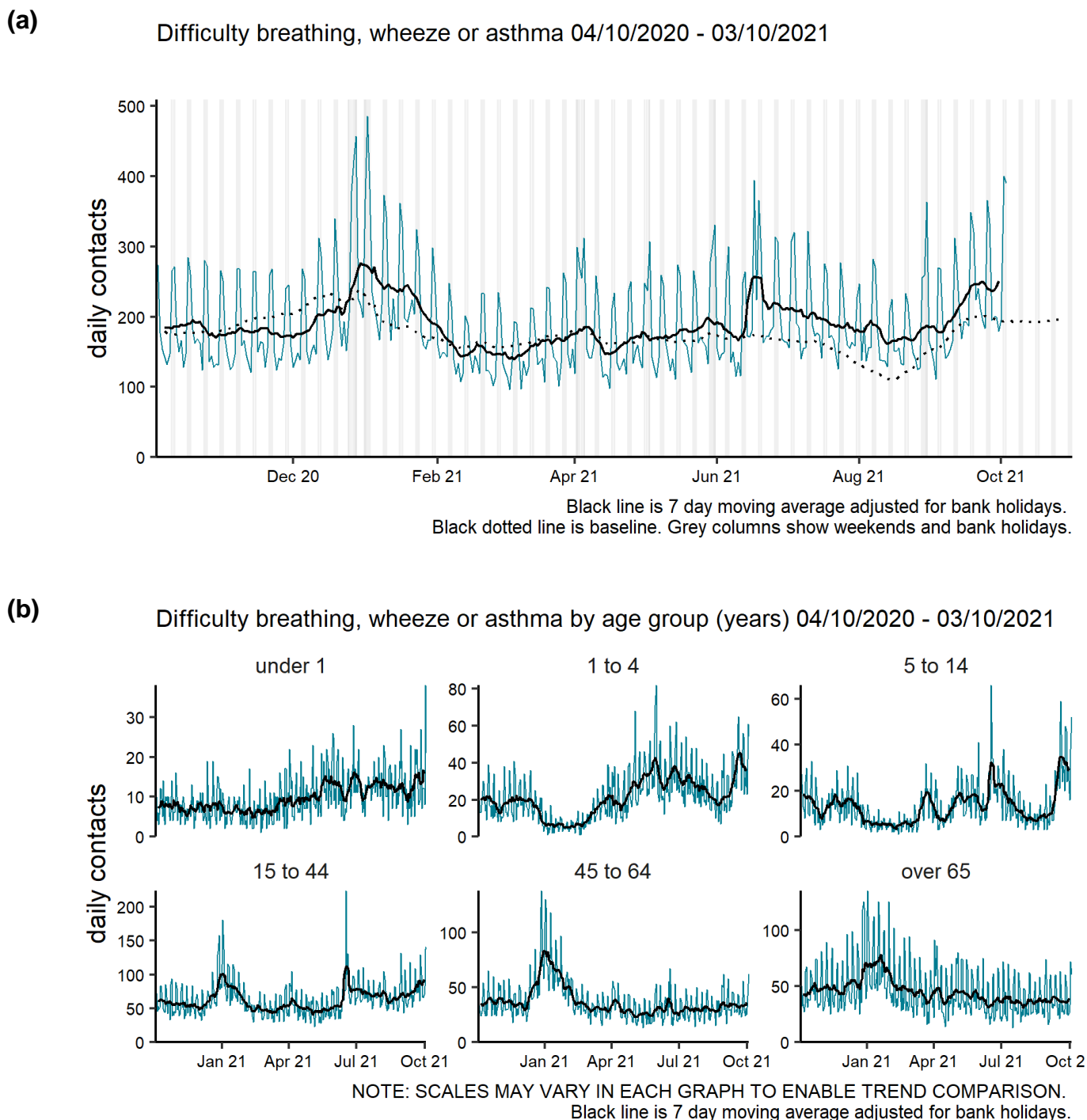
Acute bronchitis by centre 04/10/2020 - 03/10/2021



NOTE: SCALES MAY VARY IN EACH GRAPH TO ENABLE TREND COMPARISON.
Black line is 7 day moving average adjusted for bank holidays.
Black dotted line is baseline.

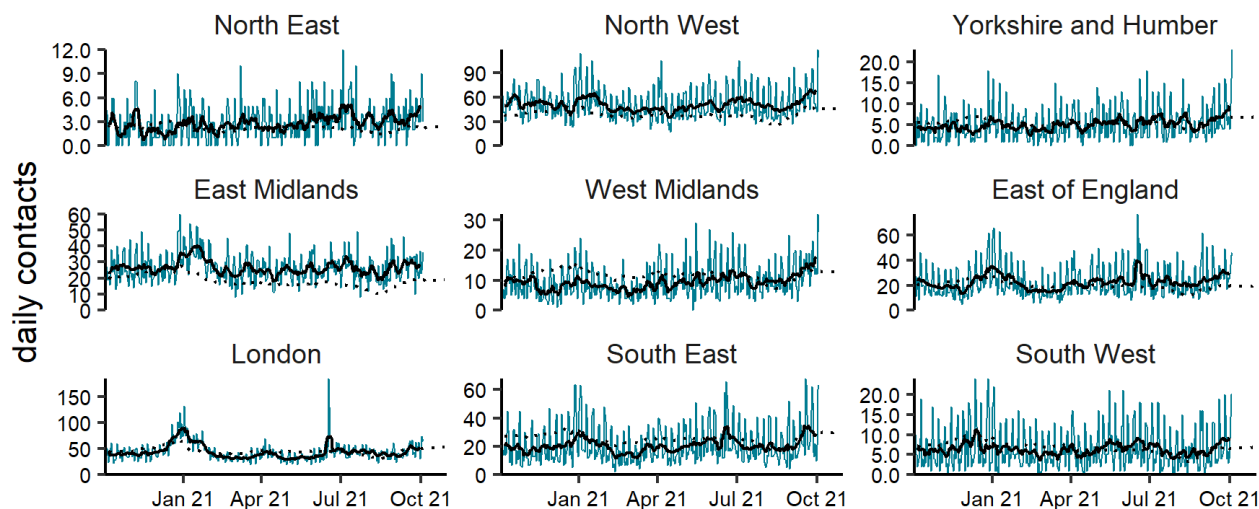
Difficulty breathing, wheeze or asthma

Figure 5: Daily number of GP out-of-hours and unscheduled contacts (and 7-day moving average adjusted for bank holidays) for difficulty breathing, wheeze or asthma, England (a) nationally, (b) by age and (c) by UKHSA Centre.



(c)

Difficulty breathing, wheeze or asthma by centre 04/10/2020 - 03/10/2021



NOTE: SCALES MAY VARY IN EACH GRAPH TO ENABLE TREND COMPARISON.

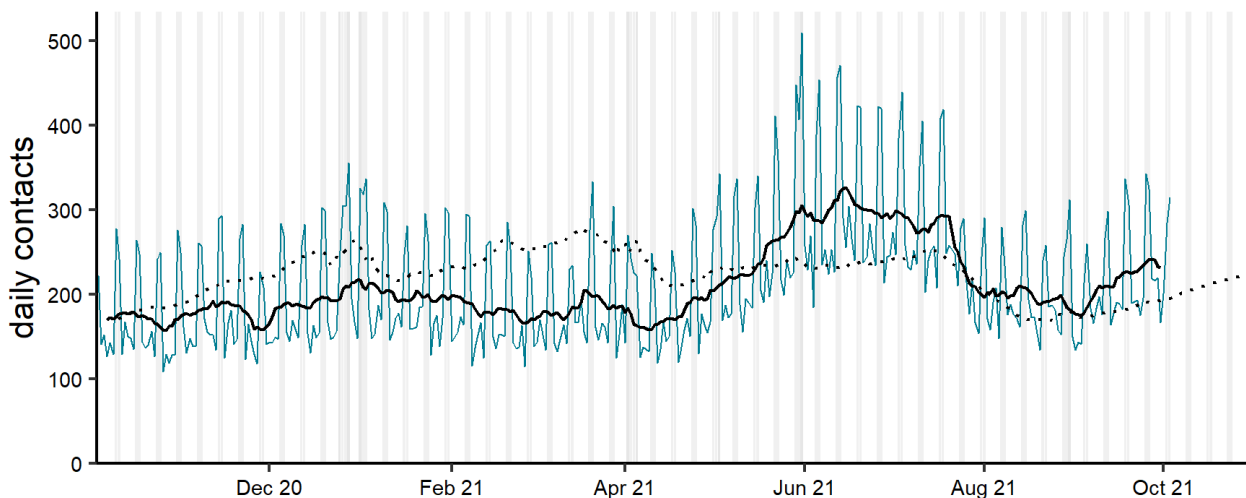
Black line is 7 day moving average adjusted for bank holidays.

Black dotted line is baseline.

Fever

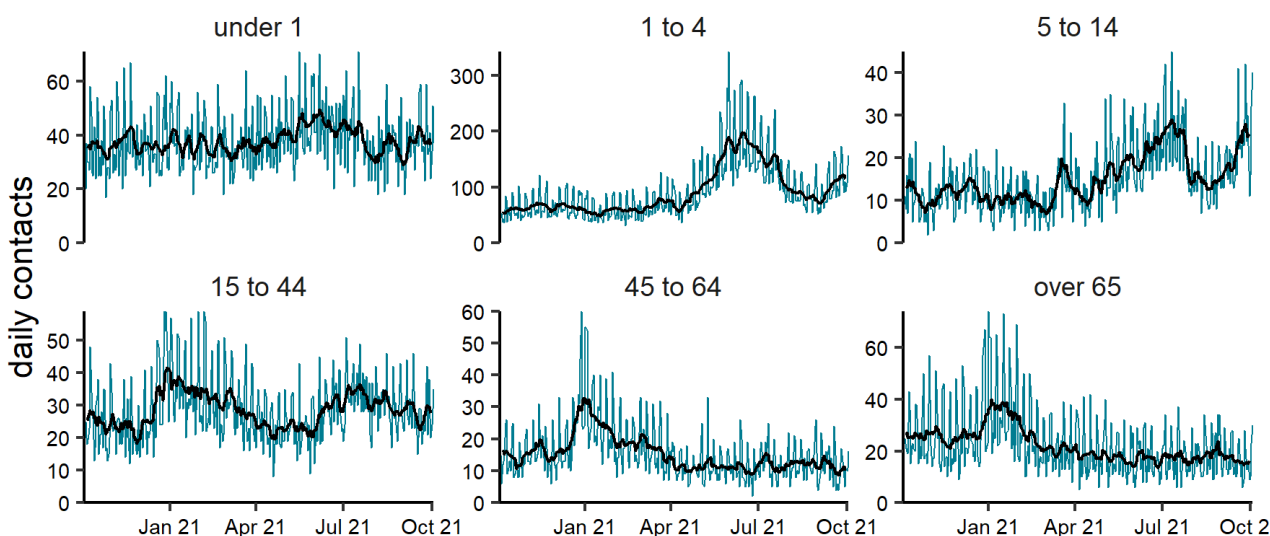
Figure 6: Daily number of GP out-of-hours and unscheduled contacts (and 7-day moving average adjusted for bank holidays) for fever, England (a) nationally, (b) by age and (c) by UKHSA Centre.

(a) Fever 04/10/2020 - 03/10/2021



Black line is 7 day moving average adjusted for bank holidays.
Black dotted line is baseline. Grey columns show weekends and bank holidays.

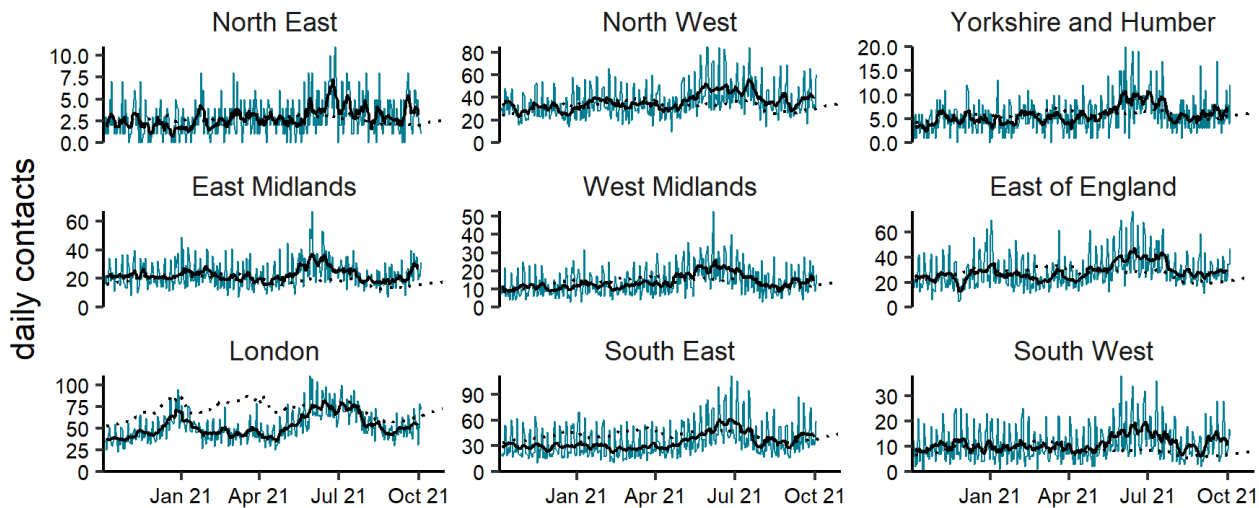
(b) Fever by age group (years) 04/10/2020 - 03/10/2021



NOTE: SCALES MAY VARY IN EACH GRAPH TO ENABLE TREND COMPARISON.
Black line is 7 day moving average adjusted for bank holidays.

(c)

Fever by centre 04/10/2020 - 03/10/2021



NOTE: SCALES MAY VARY IN EACH GRAPH TO ENABLE TREND COMPARISON.

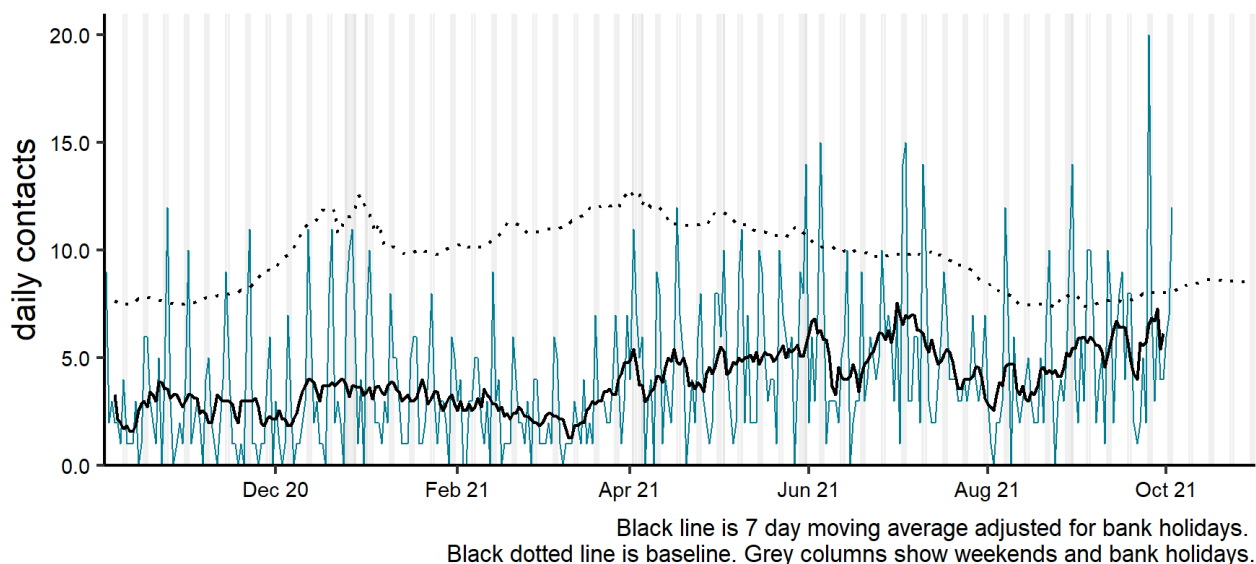
Black line is 7 day moving average adjusted for bank holidays.

Black dotted line is baseline.

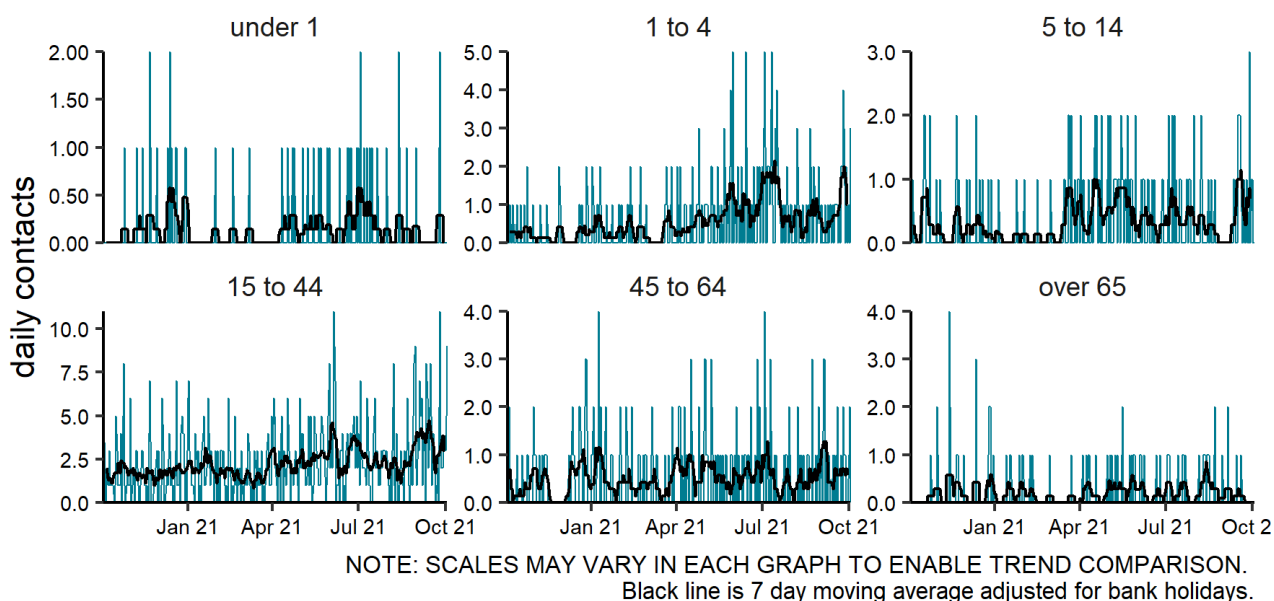
Acute pharyngitis

Figure 7: Daily number of GP out-of-hours and unscheduled contacts (and 7-day moving average adjusted for bank holidays for acute pharyngitis, England (a) nationally, (b) by age and (c) by UKHSA Centre.

(a) Pharyngitis or scarlet fever 04/10/2020 - 03/10/2021

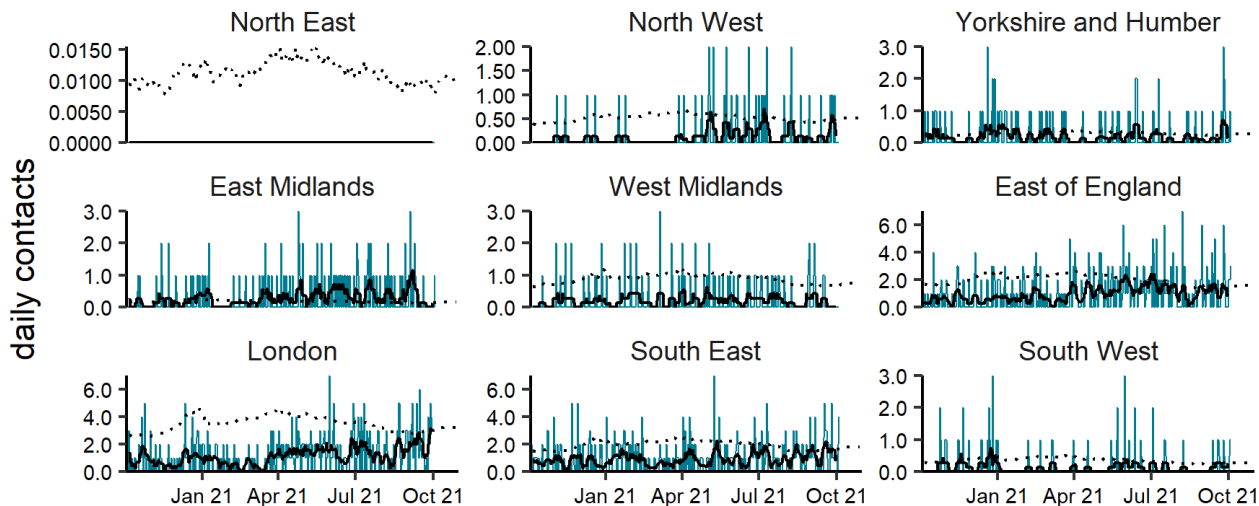


(b) Pharyngitis or scarlet fever by age group (years) 04/10/2020 - 03/10/2021



(c)

Pharyngitis or scarlet fever by centre 04/10/2020 - 03/10/2021

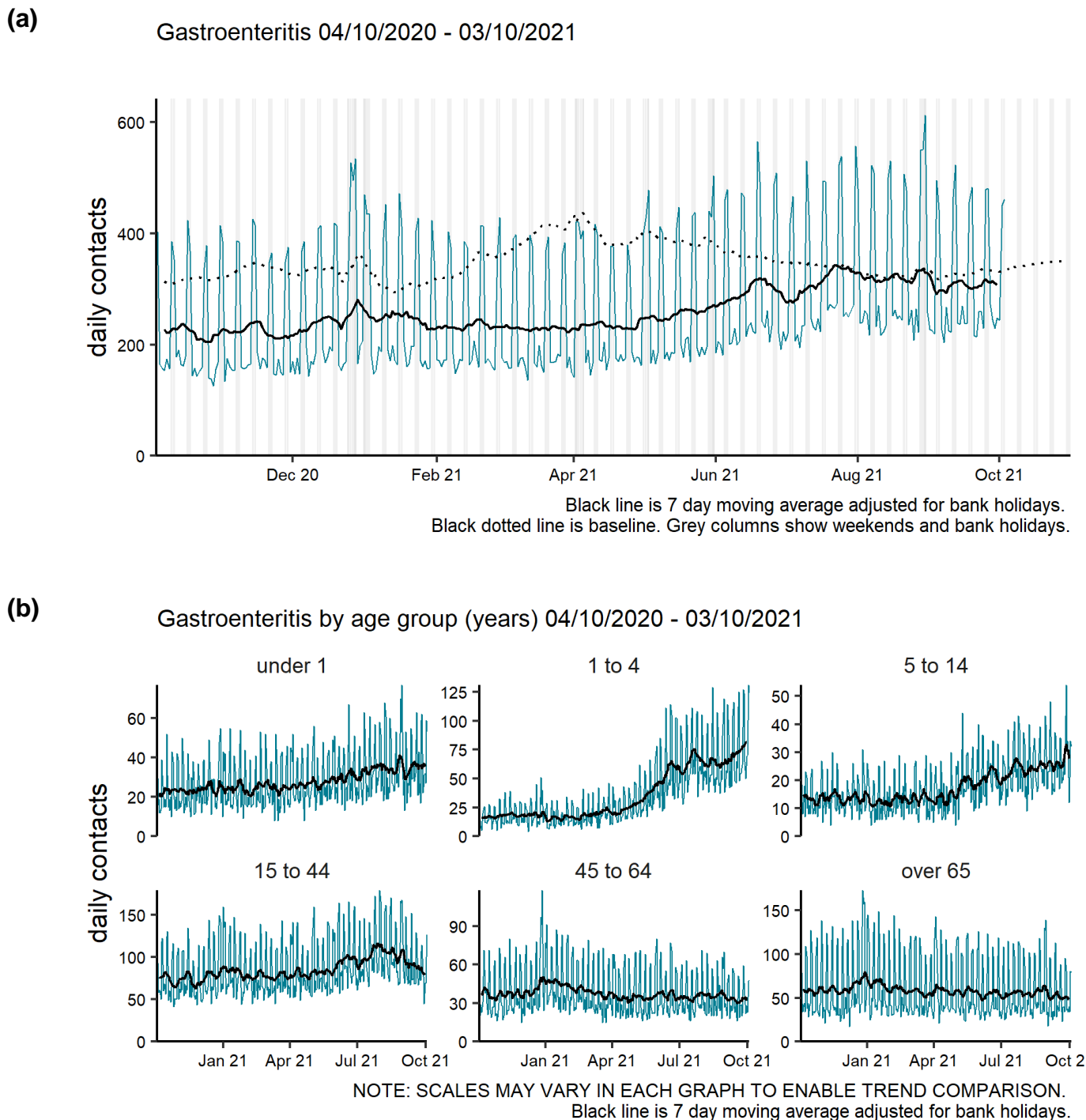


NOTE: SCALES MAY VARY IN EACH GRAPH TO ENABLE TREND COMPARISON.
Black line is 7 day moving average adjusted for bank holidays.
Black dotted line is baseline.

Gastrointestinal conditions

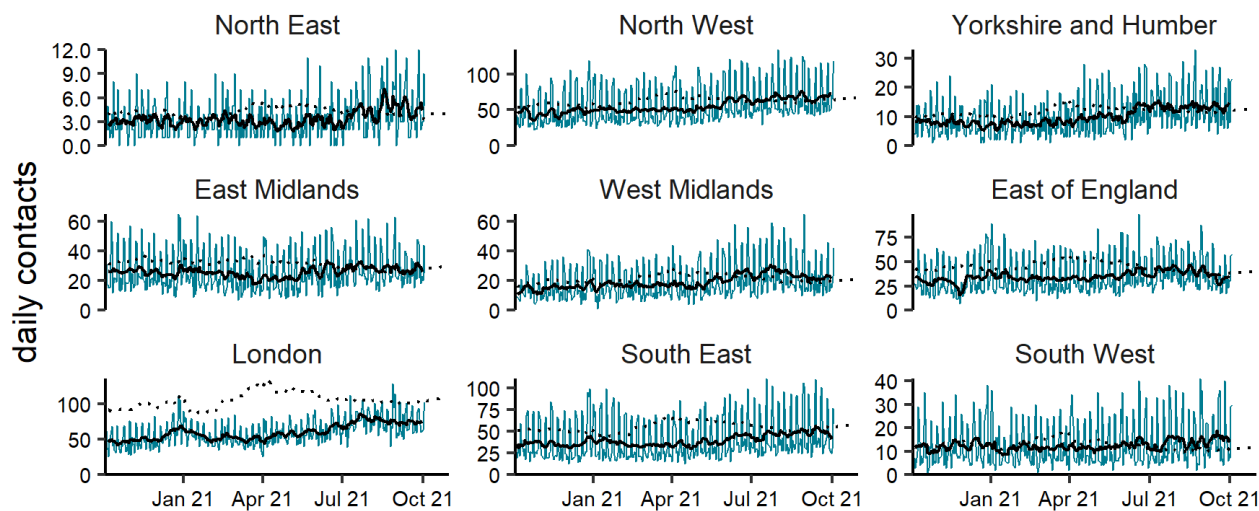
Gastroenteritis

Figure 8: Daily number of GP out-of-hours and unscheduled contacts (and 7-day moving average adjusted for bank holidays) for gastroenteritis, England (a) nationally, (b) by age and (c) by UKHSA Centre.



(c)

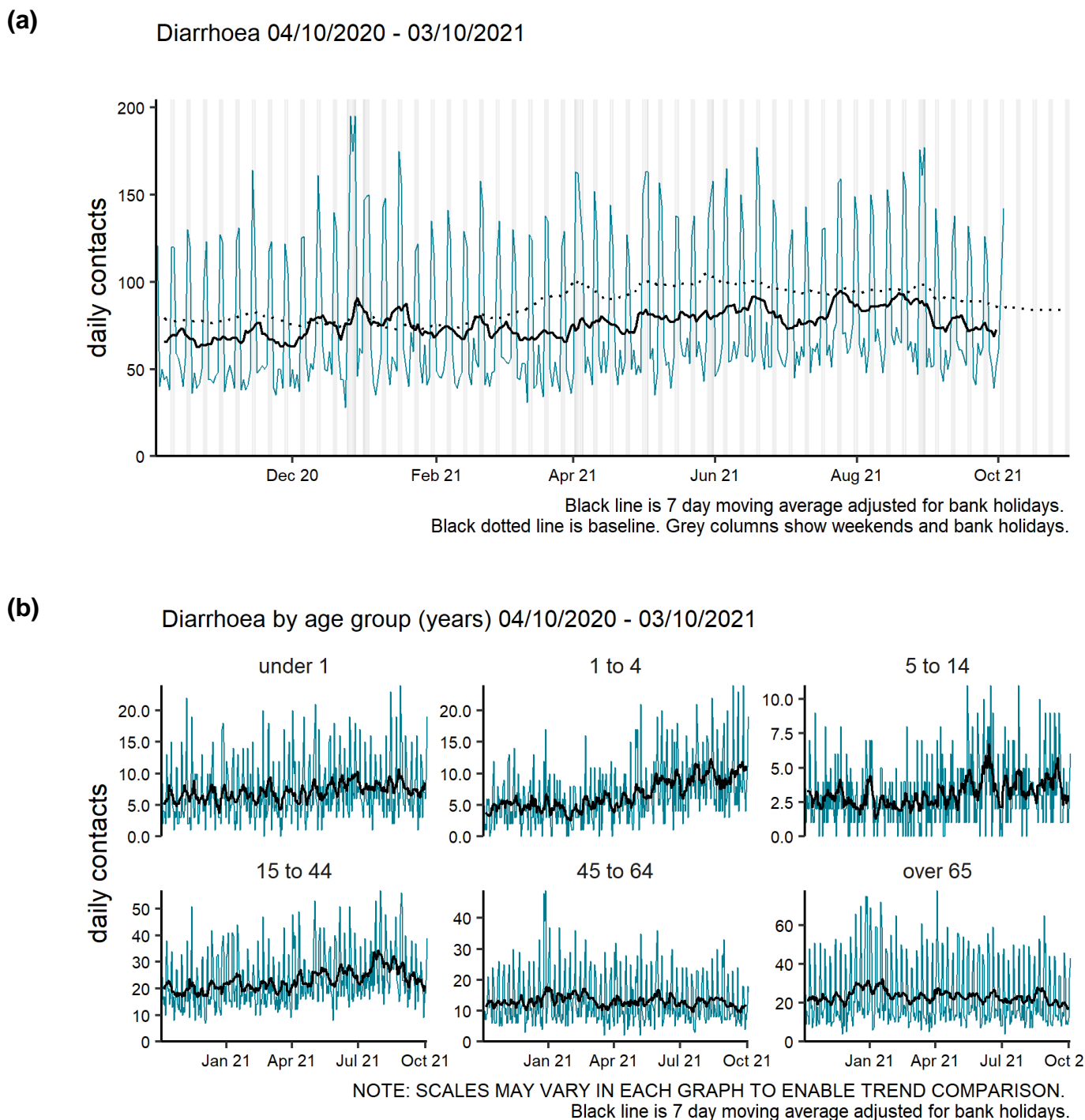
Gastroenteritis by centre 04/10/2020 - 03/10/2021



NOTE: SCALES MAY VARY IN EACH GRAPH TO ENABLE TREND COMPARISON.
 Black line is 7 day moving average adjusted for bank holidays.
 Black dotted line is baseline.

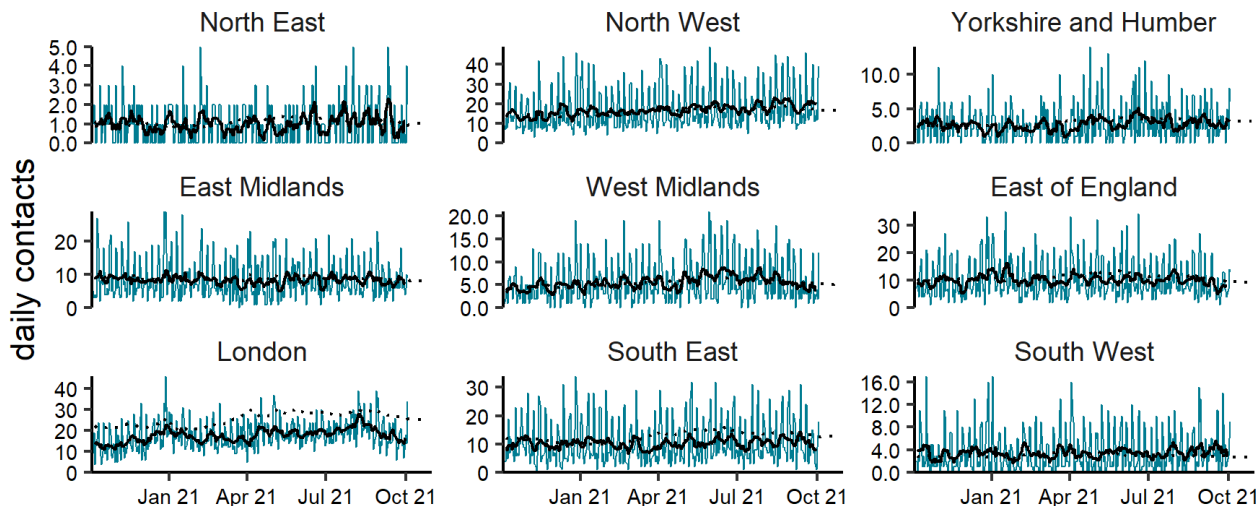
Diarrhoea

Figure 9: Daily number of GP out-of-hours and unscheduled contacts (and 7-day moving average adjusted for bank holidays) for diarrhoea, England (a) nationally, (b) by age and (c) by UKHSA Centre.



(c)

Diarrhoea by centre 04/10/2020 - 03/10/2021

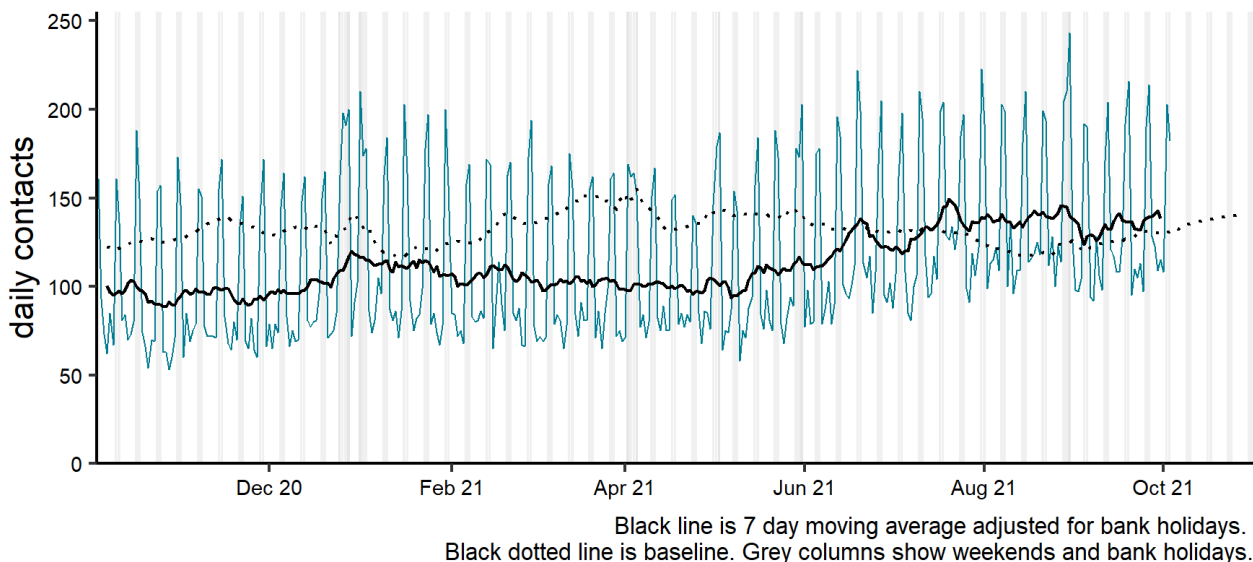


NOTE: SCALES MAY VARY IN EACH GRAPH TO ENABLE TREND COMPARISON.
Black line is 7 day moving average adjusted for bank holidays.
Black dotted line is baseline.

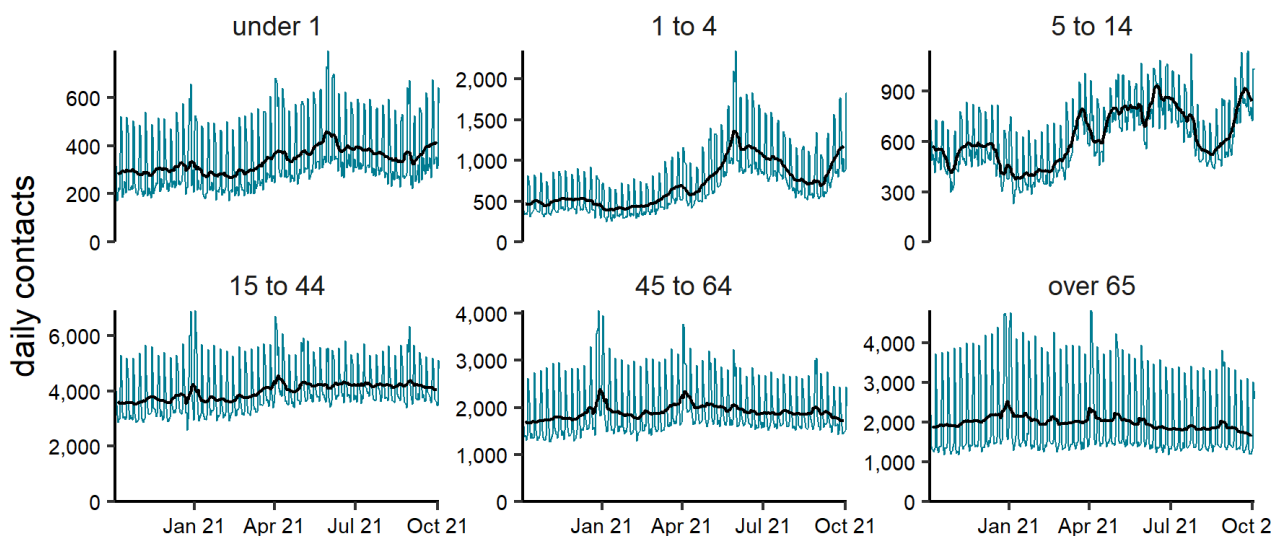
Vomiting

Figure 10: Daily number of GP out-of-hours and unscheduled contacts (and 7-day moving average adjusted for bank holidays) for vomiting, England (a) nationally, (b) by age and (c) by UKHSA Centre.

(a) Vomiting 04/10/2020 - 03/10/2021



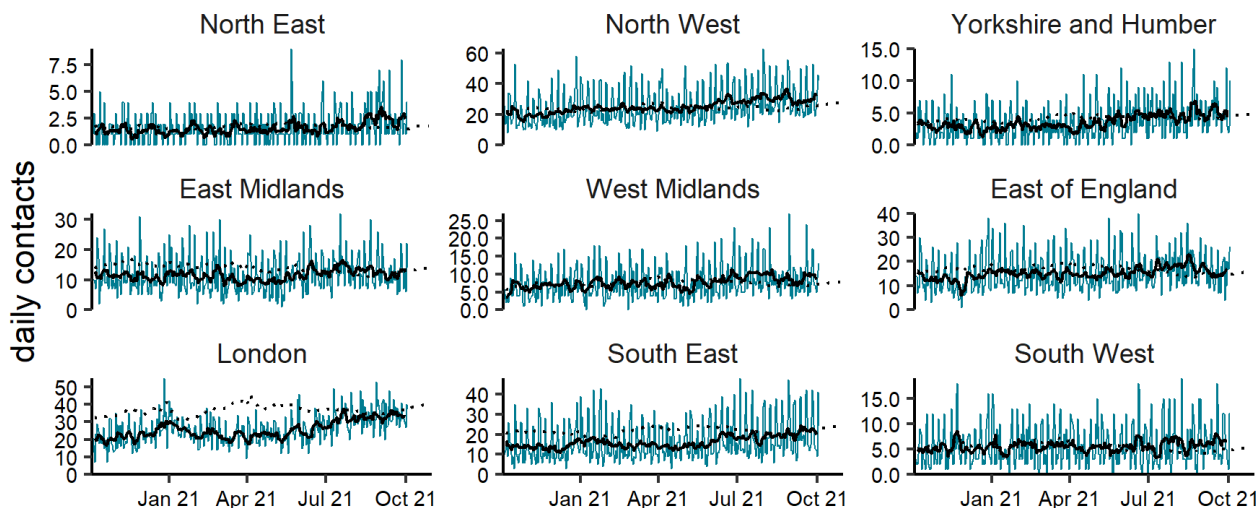
(b) Total contacts by age group (years) 04/10/2020 - 03/10/2021



NOTE: SCALES MAY VARY IN EACH GRAPH TO ENABLE TREND COMPARISON.
Black line is 7 day moving average adjusted for bank holidays.

(c)

Vomiting by centre 04/10/2020 - 03/10/2021



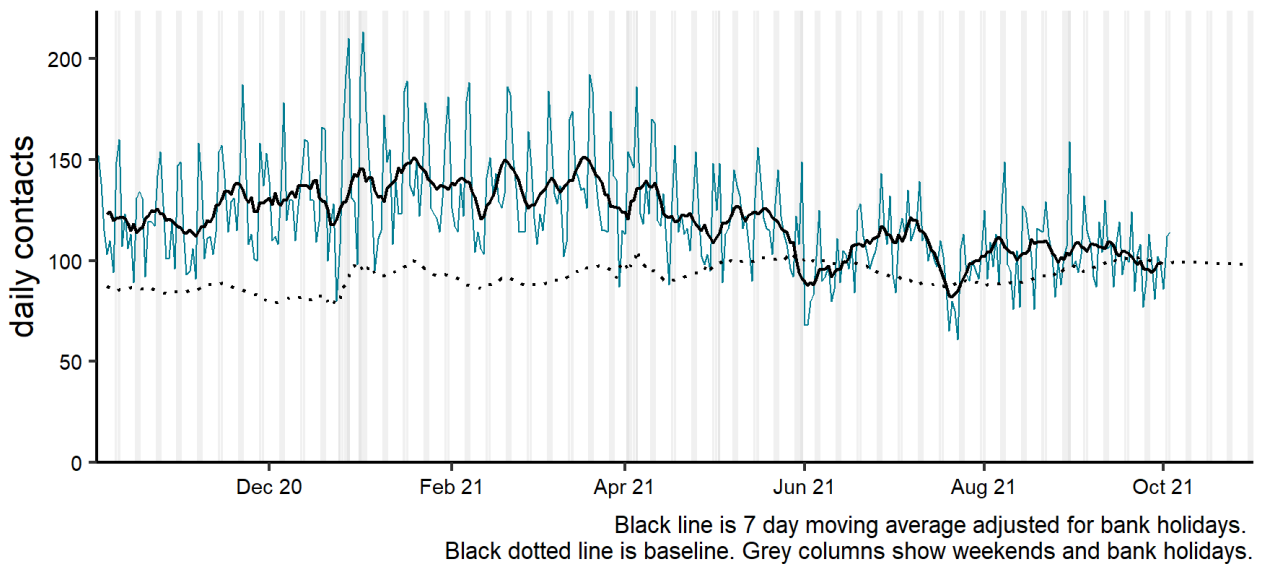
NOTE: SCALES MAY VARY IN EACH GRAPH TO ENABLE TREND COMPARISON.
Black line is 7 day moving average adjusted for bank holidays.
Black dotted line is baseline.

Cardiac conditions

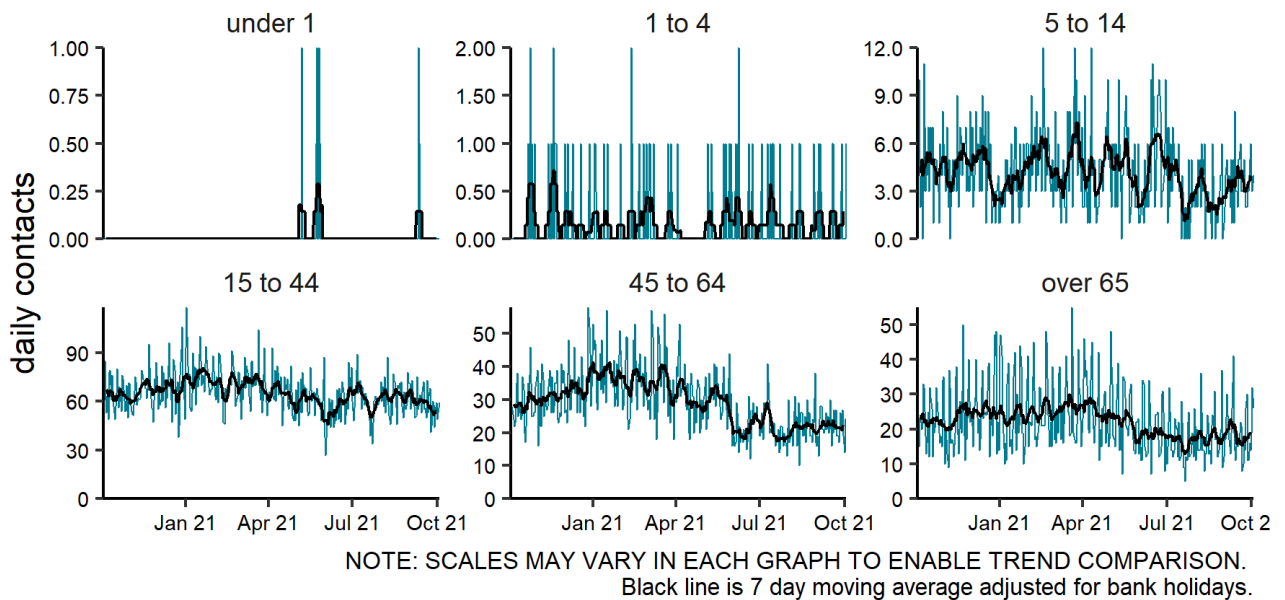
Chest pain (including myocardial infarction)

Figure 11: Daily number of GP out-of-hours and unscheduled contacts (and 7-day moving average adjusted for bank holidays) for chest pain (including myocardial infarction), England (a) nationally, (b) by age and (c) by UKHSA Centre.

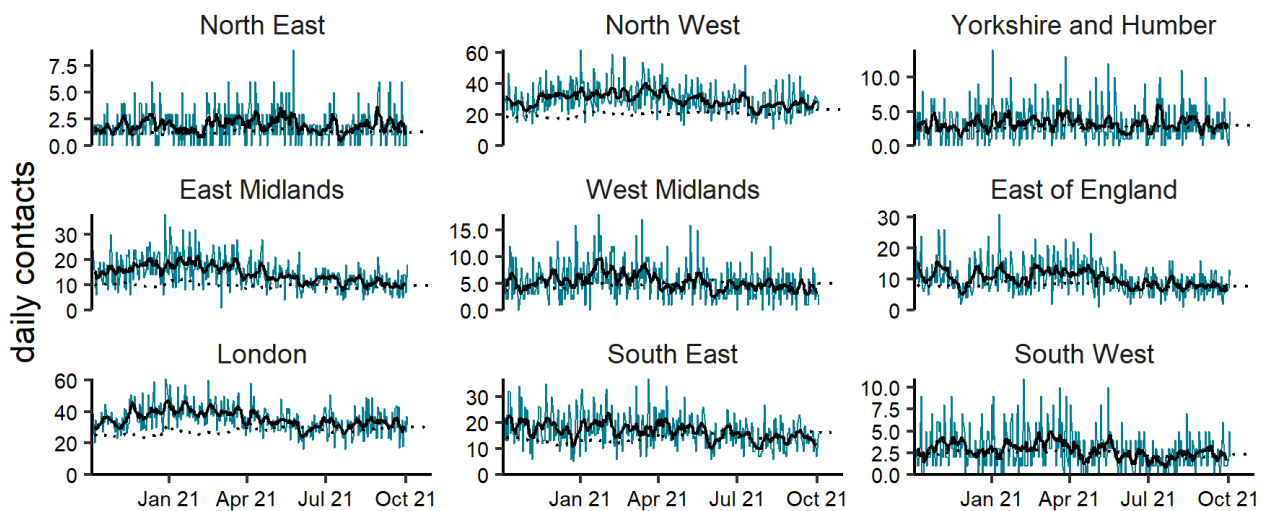
(a) Chest pain 04/10/2020 - 03/10/2021



(b) Chest pain by age group (years) 04/10/2020 - 03/10/2021



(c) Chest pain by centre 04/10/2020 - 03/10/2021



NOTE: SCALES MAY VARY IN EACH GRAPH TO ENABLE TREND COMPARISON.
Black line is 7 day moving average adjusted for bank holidays.
Black dotted line is baseline.

Seasonal environmental conditions

During set periods of the year the Met Office operates both heat and cold weather watch systems, in association with UKHSA. Syndromic indicators are used to monitor the impact of both extreme hot and cold weather in England during these periods and will be included below (where an appropriate syndromic indicator is available).

[Cold weather alert](#) period: 1 November to 31 March

[Heat-Health Alert](#) period: 1 June to 15 September

Weather alert level (current reporting week): **Level 0 - Long-term planning**

No weather watch in place

Notes and caveats

The following additional caveats apply to the UKHSA GP out-of-hours/unscheduled care syndromic surveillance system:

- the data presented should be used to monitor trends rather than numbers of 'cases':
 - this is a sentinel syndromic surveillance system; not all GP OOH service providers in England are included
 - coverage varies by location, as reflected in the numbers included in the total contacts by Centre charts **above**
- some syndromic indicators are hierarchical:
 - acute respiratory infections includes:
 - influenza-like illness
 - acute bronchitis/ bronchiolitis
 - other and non-specific acute respiratory infections
 - gastroenteritis includes:
 - diarrhoea
 - vomiting
 - other and non-specific gastroenteritis
- baselines:
 - were last remodelled March 2021
 - are constructed from historical data since July 2009
 - represent seasonally expected levels of activity
 - take account of any known substantial changes in data collection, population coverage or reporting practices:
 - the COVID-19 pandemic period is excluded, to show seasonally expected levels if COVID-19 had not occurred
 - may be remodelled to include the impacts seen during periods of the COVID-19 pandemic if/when appropriate due to introduction of large scale public health interventions which affect GP OOH usage

Acknowledgements

We are grateful to Advanced and the GP OOH and unscheduled care service providers who have kindly agreed to participate in this system.

About the UK Health Security Agency

The UK Health Security Agency is an executive agency, sponsored by the [Department of Health and Social Care](#).

www.ukhsa.gov.uk

© Crown copyright 2021
Version: OOH-1

Prepared by: Real-time Syndromic Surveillance Team
For queries relating to this document, please contact: syndromic.surveillance@phe.gov.uk

Published: October 2021



You may re-use this information (excluding logos) free of charge in any format or medium, under the terms of the Open Government Licence v3.0. To view this licence, visit [OGL](#). Where we have identified any third party copyright information you will need to obtain permission from the copyright holders concerned.



UKHSA supports the UN
Sustainable Development Goals

