

Dynamic CO-CIN report to SAGE and NERVTAG

Dynamic content updated: 2021-09-08 03:06:59.

Executive summary

Includes patients admitted on or after 01 May 2021

There are 17870 patients included in CO-CIN. Of these, 1323 patient(s) have died and 2976 required ICU. 12699 have been discharged home.

Admission

Figure 1

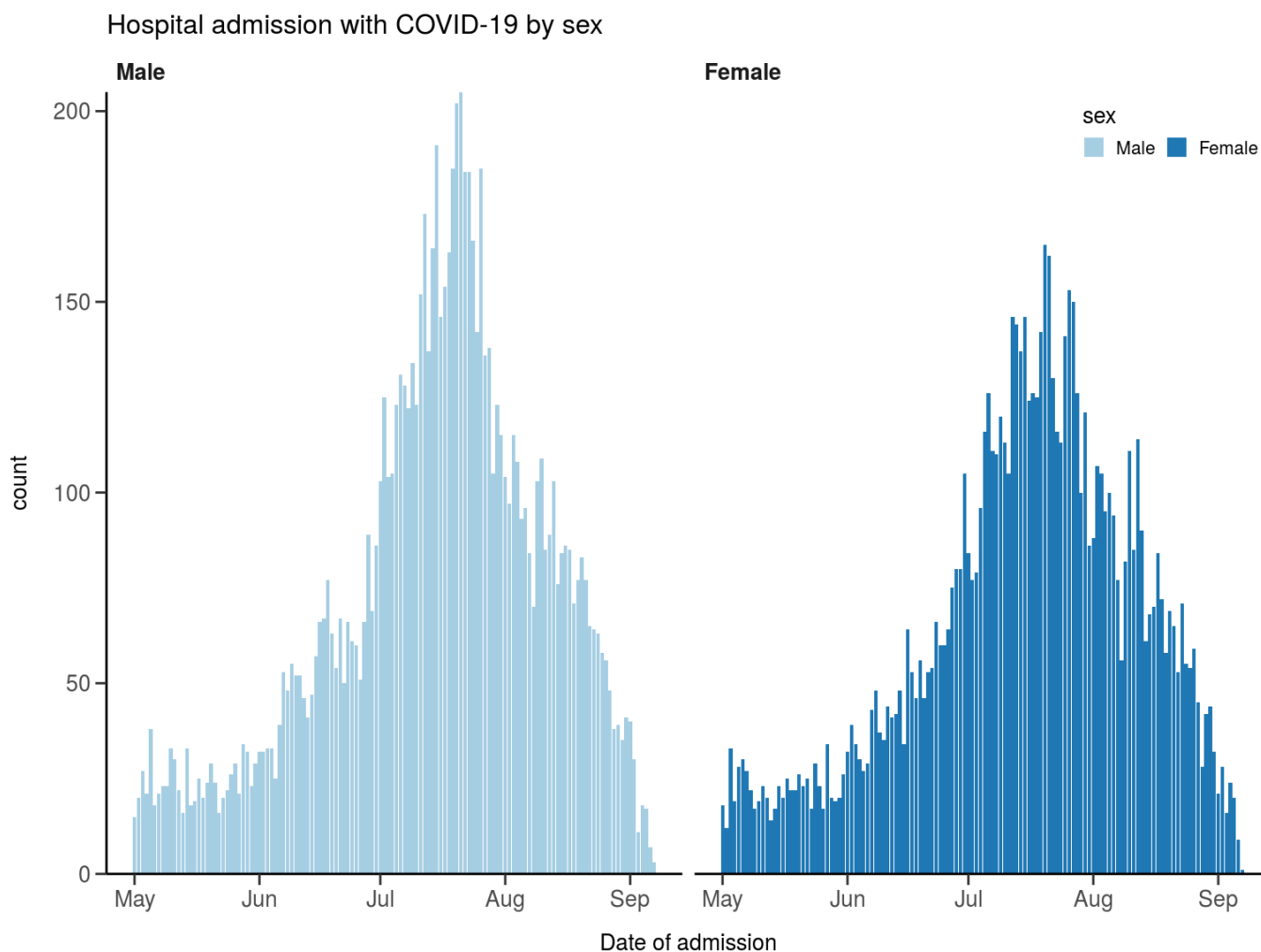
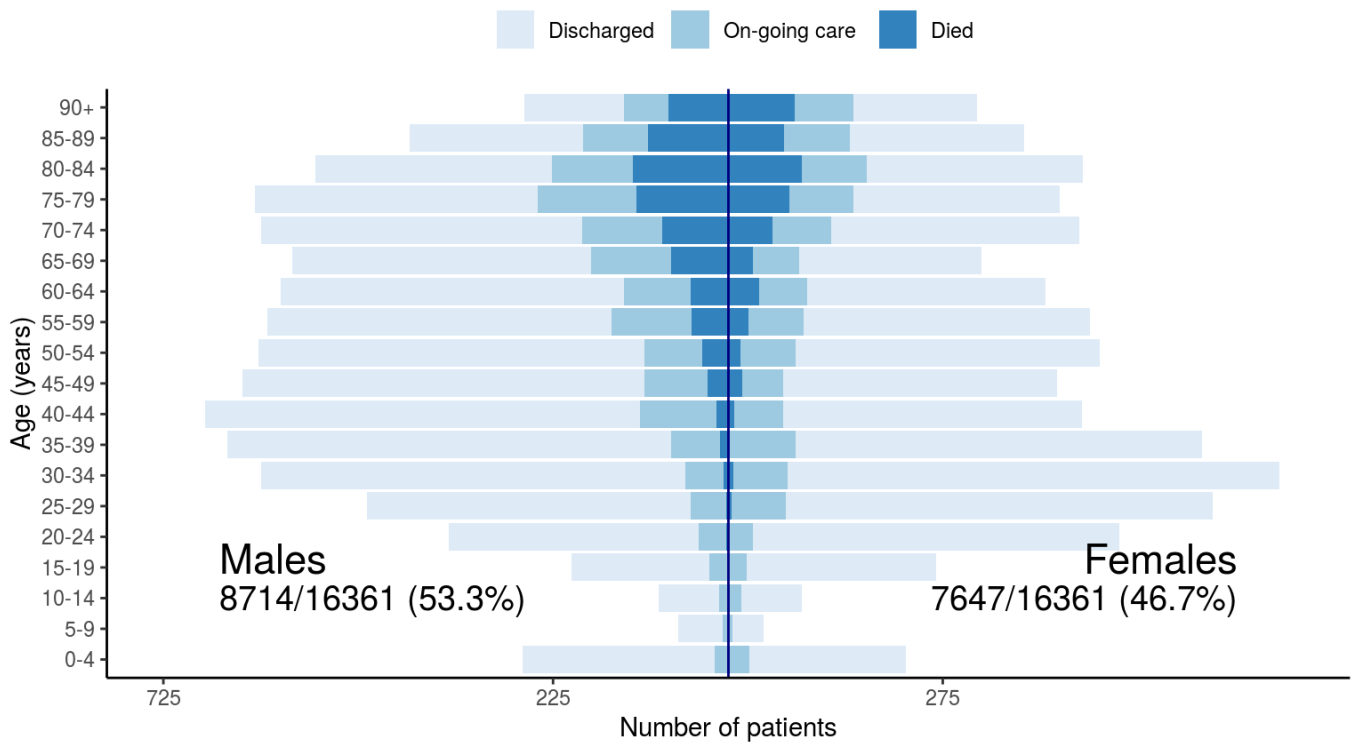


Figure 2

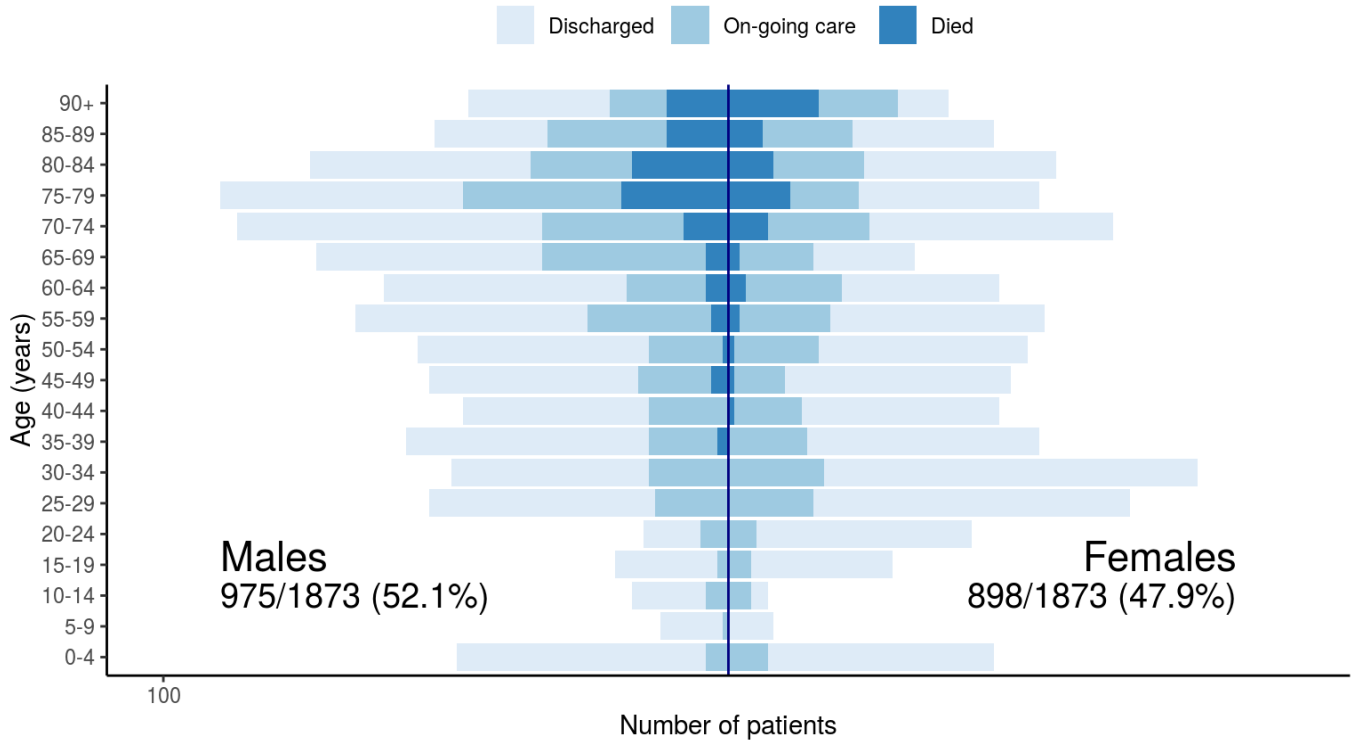
Patients with outcome stratified by age, and sex

All



Patients with outcome stratified by age, and sex

Admitted ≥ 14 days and ≤ 28 days ago

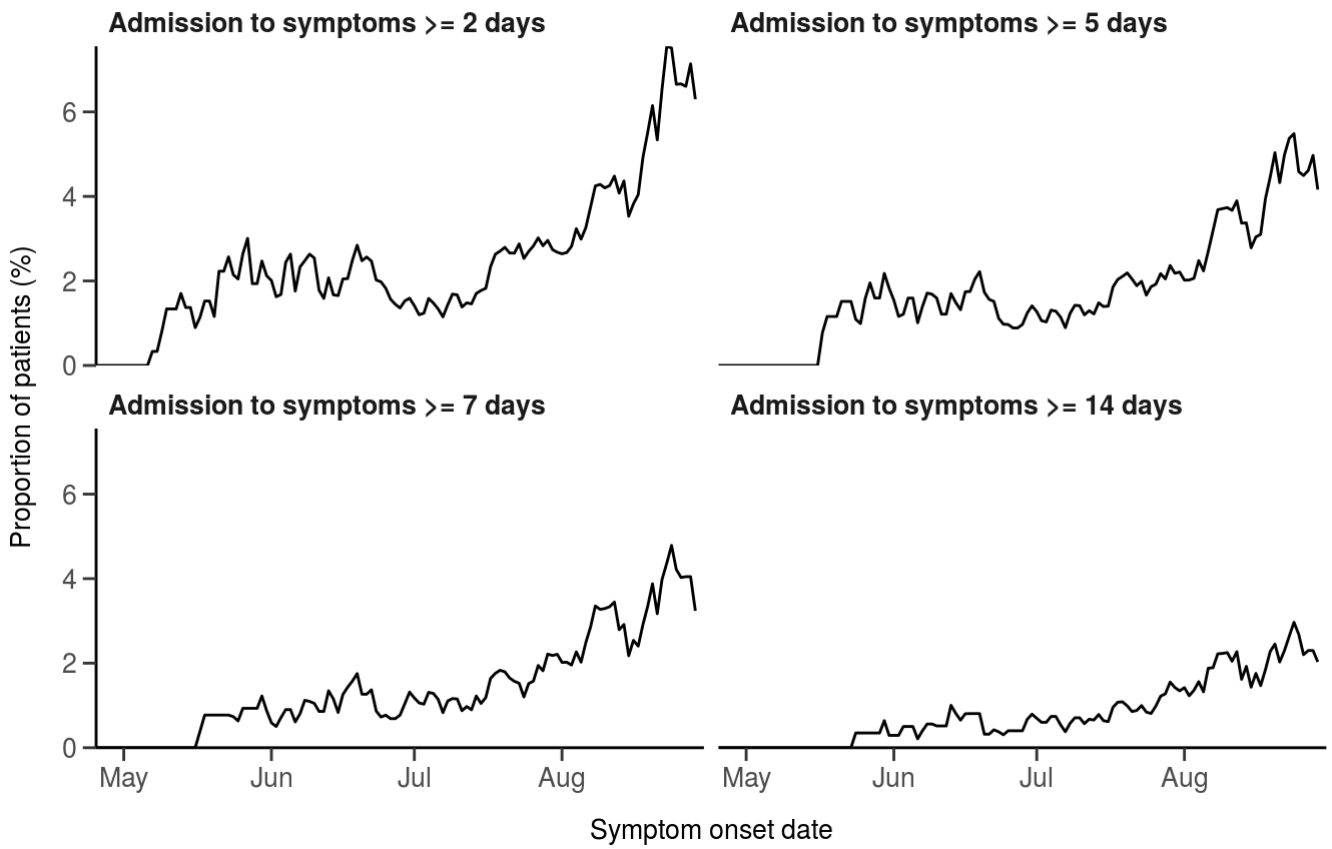


Nosocomial

Figure 3

Proportion with symptom onset occurring after hospital admission

7-day rolling percentage. n = 14102



Patient flow

Figure 4A - All patients

N = 17007

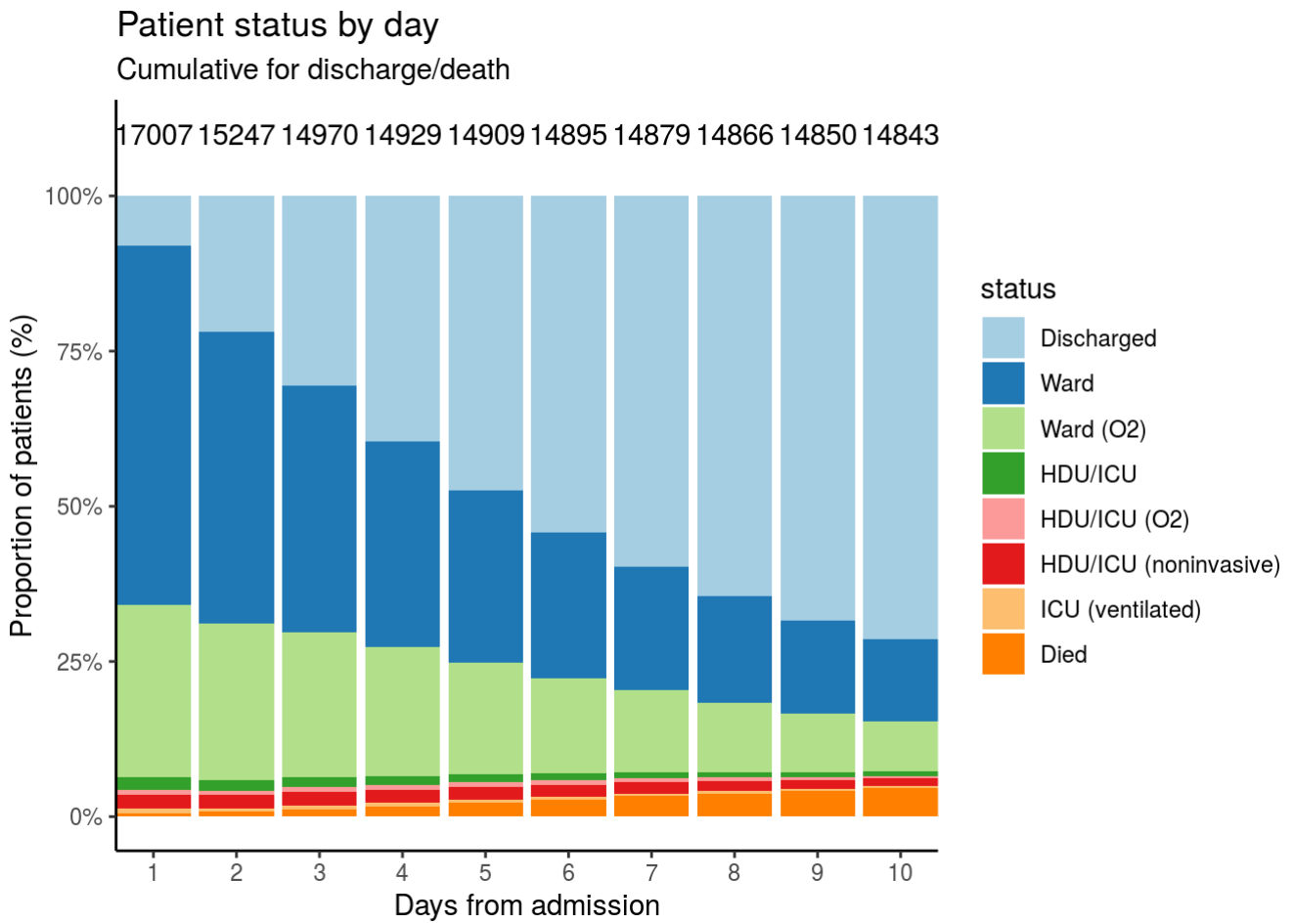
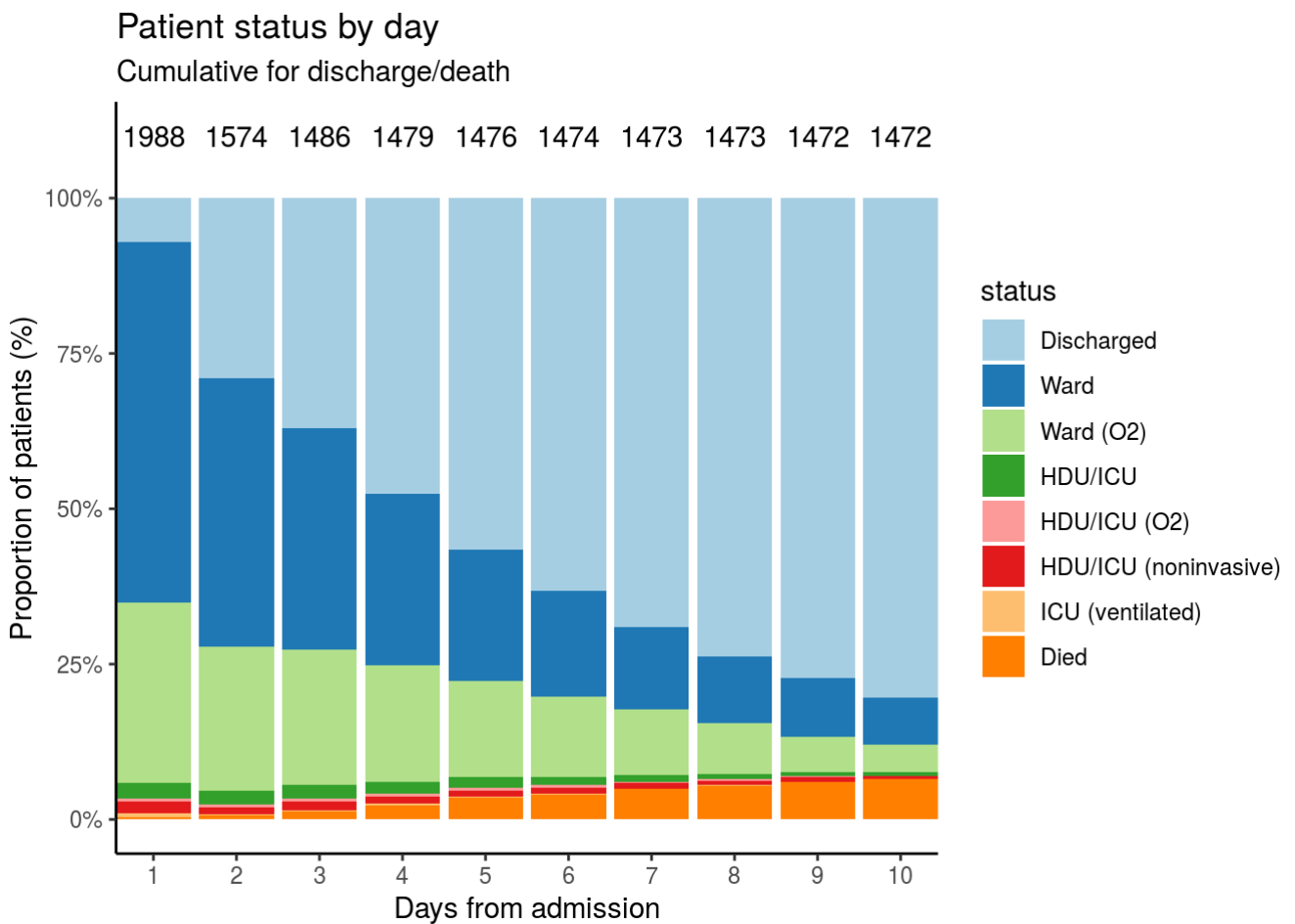


Figure 4B - Patients admitted ≥ 14 days and ≤ 28 days ago

N = 1988



Oxygen requirement

Figure 5A - All patients

N = 16215

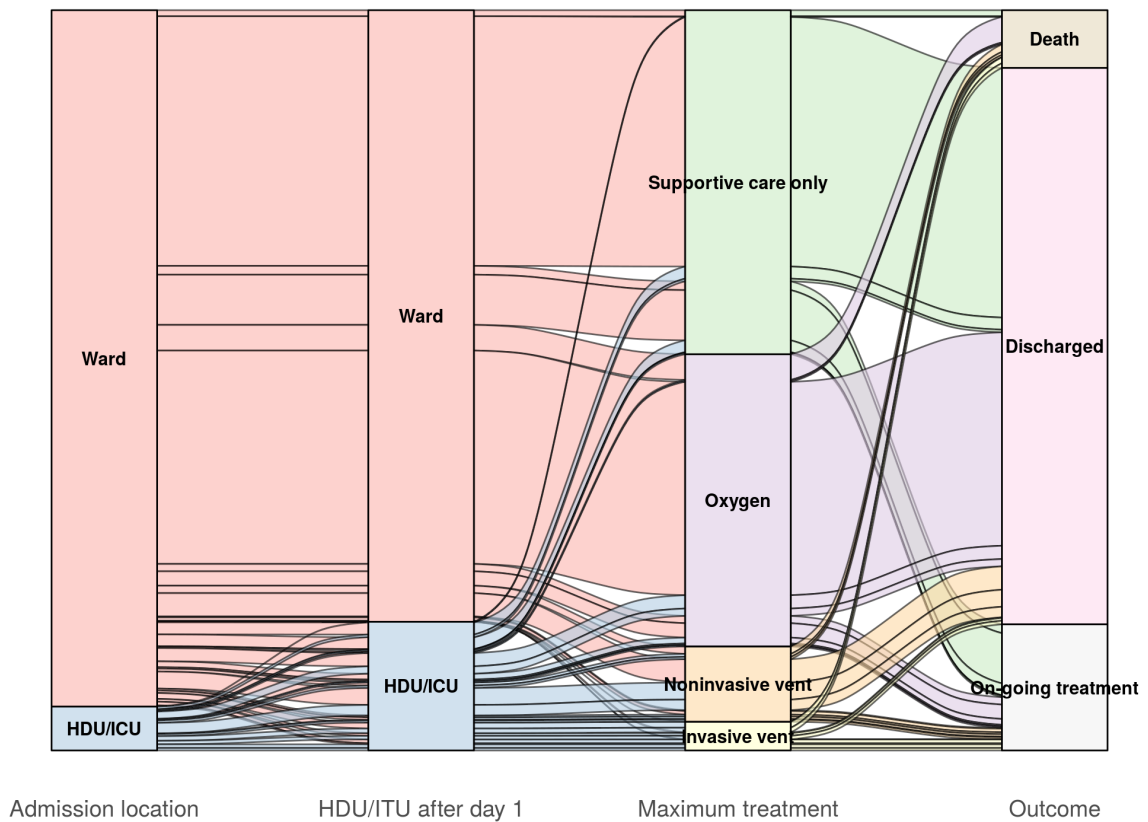


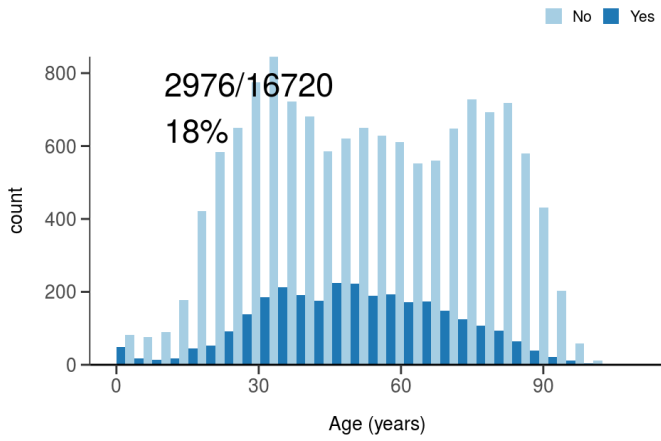
Figure 5B - Patients admitted ≥ 14 days and ≤ 28 days ago

N = 1923

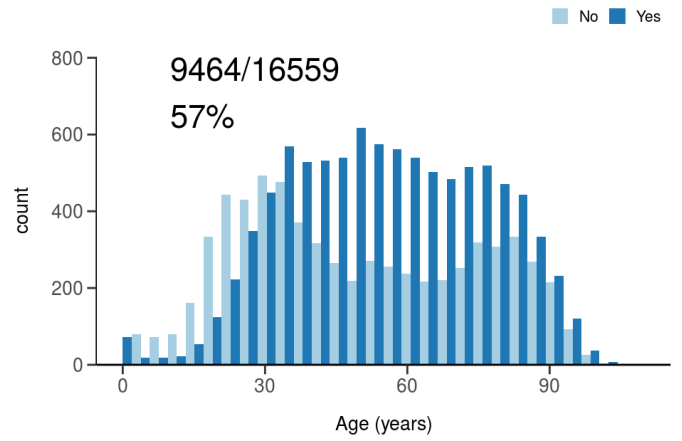
Treatment

Figure 6

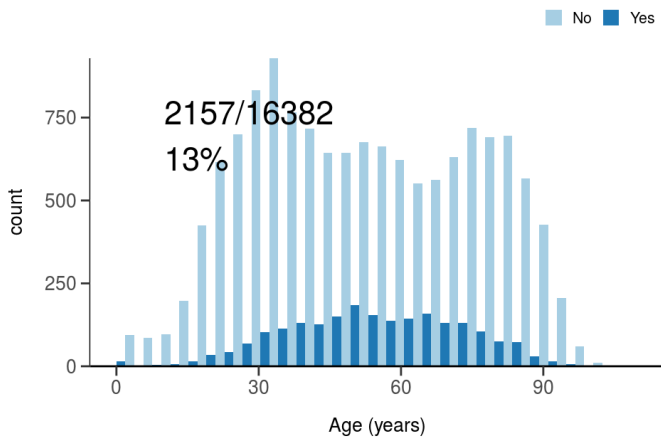
ICU/HDU admission
Figure 10A



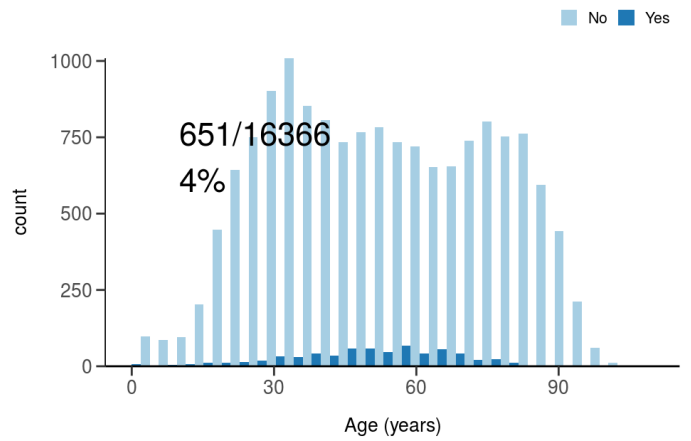
High flow oxygen
Figure 10B



Noninvasive ventilation
Figure 10C



Invasive ventilation
Figure 10D



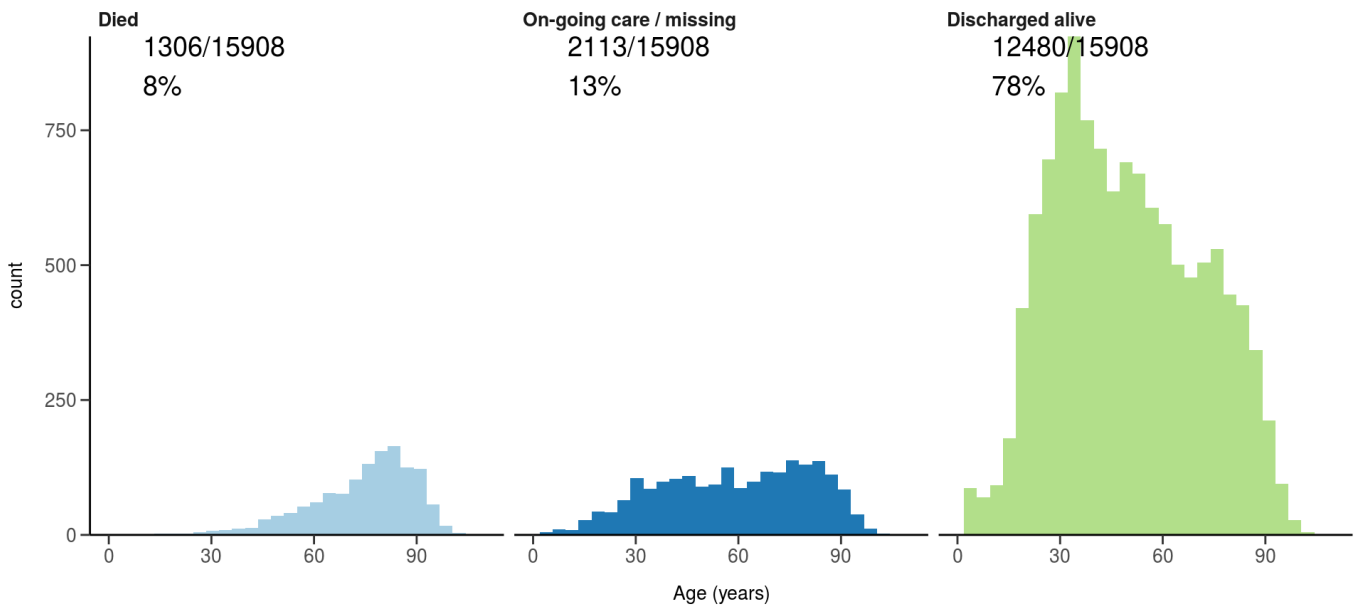
Status in patients admitted ≥ 14 days from today

Figure 7

Where outcome is not reported, on-going care is assumed.

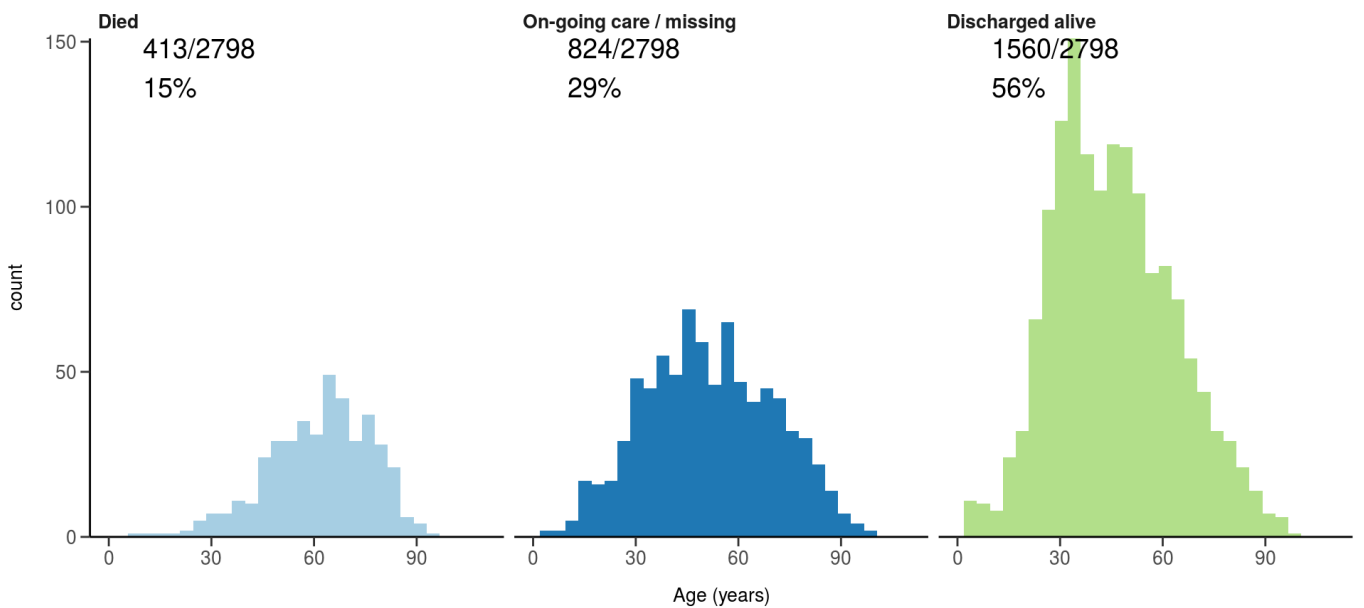
All: status in patients admitted ≥ 14 days ago

Figure 11A



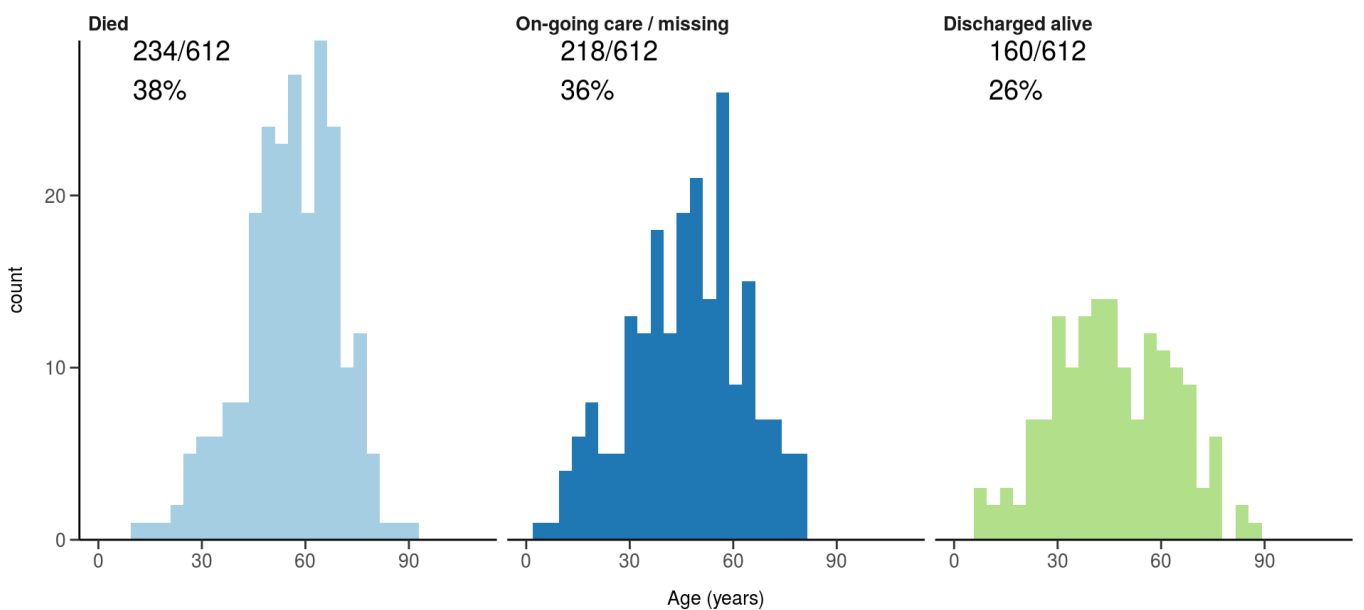
ICU/HDU admissions: status in patients admitted ≥ 14 days ago

Figure 11B



Invasive ventilation: status in patients admitted ≥ 14 days ago

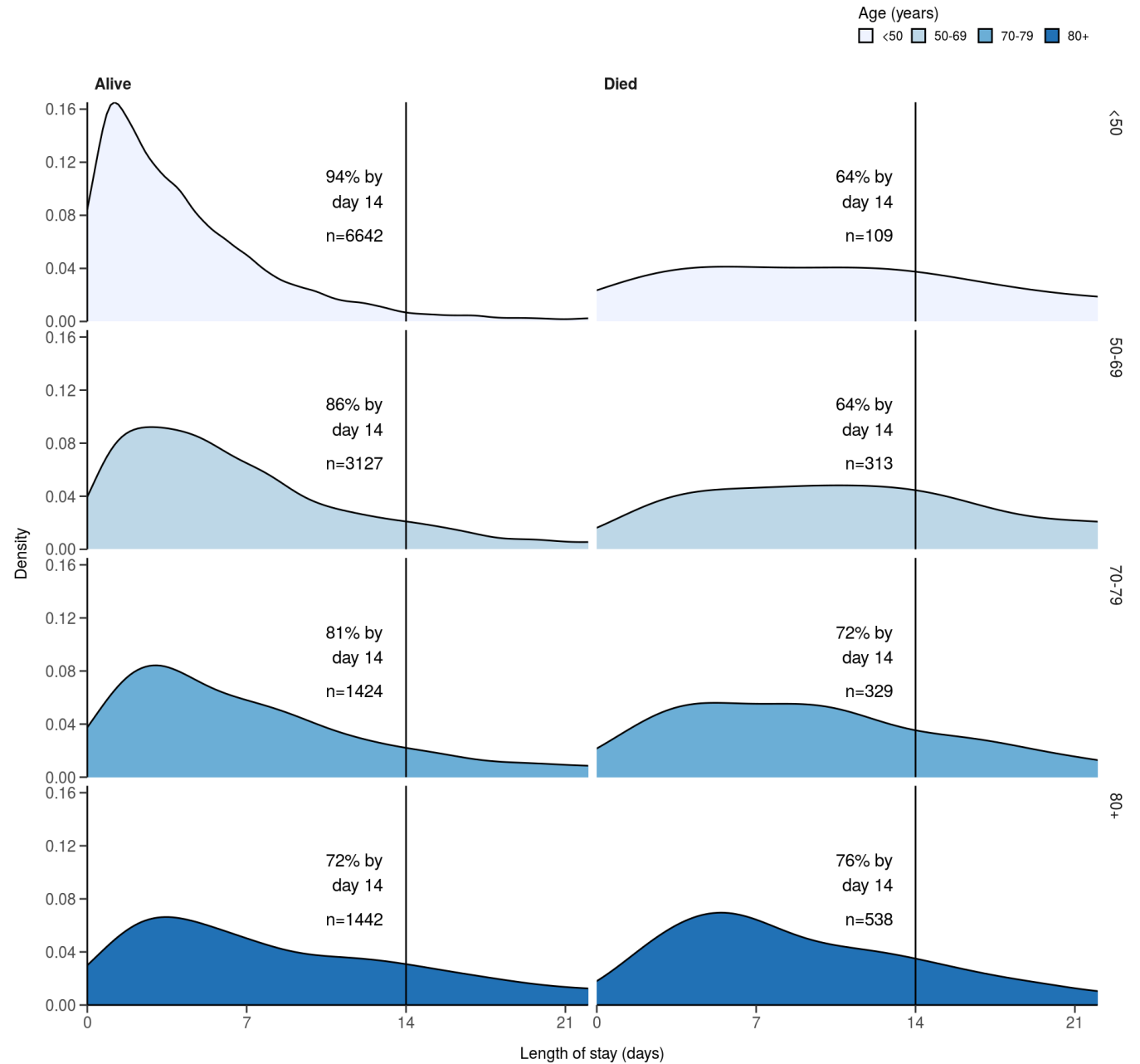
Figure 11c



Length of stay stratified by age

####Figure 8

Length of stay stratified by age and mortality
Proportion who reach outcome by day 14 shown



Data

Table for figure 2A

age.factor	sex	status	n
0-4	Male	Discharged	246
0-4	Male	On-going care	16
0-4	Male	Died	2
0-4	Female	Discharged	201

age.factor	sex	status	n
0-4	Female	On-going care	25
0-4	Female	Died	2
5-9	Male	Discharged	57
5-9	Male	On-going care	7
5-9	Female	Discharged	40
5-9	Female	On-going care	4
5-9	Female	Died	1
10-14	Male	Discharged	77
10-14	Male	On-going care	12
10-14	Female	Discharged	77
10-14	Female	On-going care	15
10-14	Female	Died	2
15-19	Male	Discharged	176
15-19	Male	On-going care	24
15-19	Male	Died	1
15-19	Female	Discharged	244
15-19	Female	On-going care	22
15-19	Female	Died	1
15-19	Not specified	On-going care	1
20-24	Male	Discharged	321
20-24	Male	On-going care	35
20-24	Male	Died	3
20-24	Female	Discharged	470
20-24	Female	On-going care	30
20-24	Female	Died	1
25-29	Male	Discharged	415
25-29	Male	On-going care	46
25-29	Male	Died	3
25-29	Female	Discharged	547
25-29	Female	On-going care	70
25-29	Female	Died	4
25-29	Not specified	Discharged	1

age.factor	sex	status	n
30-34	Male	Discharged	545
30-34	Male	On-going care	49
30-34	Male	Died	6
30-34	Female	Discharged	631
30-34	Female	On-going care	70
30-34	Female	Died	6
30-34	Not specified	Discharged	1
30-34	NA	Died	1
35-39	Male	Discharged	570
35-39	Male	On-going care	62
35-39	Male	Died	11
35-39	Female	Discharged	522
35-39	Female	On-going care	84
35-39	Female	Died	2
35-39	Not specified	Discharged	1
35-39	NA	Discharged	2
35-39	NA	On-going care	1
40-44	Male	Discharged	559
40-44	Male	On-going care	98
40-44	Male	Died	15
40-44	Female	Discharged	384
40-44	Female	On-going care	62
40-44	Female	Died	8
40-44	Not specified	Discharged	1
45-49	Male	Discharged	515
45-49	Male	On-going care	81
45-49	Male	Died	27
45-49	Female	Discharged	352
45-49	Female	On-going care	52
45-49	Female	Died	18
45-49	Not specified	On-going care	1
50-54	Male	Discharged	495

age.factor	sex	status	n
50-54	Male	On-going care	74
50-54	Male	Died	34
50-54	Female	Discharged	390
50-54	Female	On-going care	70
50-54	Female	Died	16
50-54	Not specified	Discharged	1
50-54	NA	Discharged	2
55-59	Male	Discharged	441
55-59	Male	On-going care	103
55-59	Male	Died	47
55-59	Female	Discharged	367
55-59	Female	On-going care	71
55-59	Female	Died	26
55-59	NA	Discharged	2
60-64	Male	Discharged	440
60-64	Male	On-going care	85
60-64	Male	Died	49
60-64	Female	Discharged	306
60-64	Female	On-going care	62
60-64	Female	Died	39
65-69	Male	Discharged	384
65-69	Male	On-going care	102
65-69	Male	Died	74
65-69	Female	Discharged	234
65-69	Female	On-going care	59
65-69	Female	Died	32
65-69	Not specified	Discharged	1
70-74	Male	Discharged	411
70-74	Male	On-going care	103
70-74	Male	Died	85
70-74	Female	Discharged	318
70-74	Female	On-going care	75

age.factor	sex	status	n
70-74	Female	Died	57
70-74	NA	Discharged	2
75-79	Male	Discharged	362
75-79	Male	On-going care	127
75-79	Male	Died	118
75-79	Female	Discharged	265
75-79	Female	On-going care	82
75-79	Female	Died	78
75-79	Not specified	Discharged	1
80-84	Male	Discharged	304
80-84	Male	On-going care	103
80-84	Male	Died	123
80-84	Female	Discharged	277
80-84	Female	On-going care	84
80-84	Female	Died	94
80-84	Not specified	Discharged	1
80-84	NA	Died	1
85-89	Male	Discharged	223
85-89	Male	On-going care	83
85-89	Male	Died	103
85-89	Female	Discharged	223
85-89	Female	On-going care	85
85-89	Female	Died	71
85-89	Not specified	Discharged	1
85-89	NA	Discharged	1
90+	Male	Discharged	128
90+	Male	On-going care	57
90+	Male	Died	77
90+	Female	Discharged	159
90+	Female	On-going care	75
90+	Female	Died	85

Table for figure 2B

age.factor	sex	status	n
0-4	Male	Discharged	44
0-4	Male	On-going care	4
0-4	Female	Discharged	40
0-4	Female	On-going care	7
5-9	Male	Discharged	11
5-9	Male	On-going care	1
5-9	Female	Discharged	8
10-14	Male	Discharged	13
10-14	Male	On-going care	4
10-14	Female	Discharged	3
10-14	Female	On-going care	4
15-19	Male	Discharged	18
15-19	Male	On-going care	2
15-19	Female	Discharged	25
15-19	Female	On-going care	4
20-24	Male	Discharged	10
20-24	Male	On-going care	5
20-24	Female	Discharged	38
20-24	Female	On-going care	5
25-29	Male	Discharged	40
25-29	Male	On-going care	13
25-29	Female	Discharged	56
25-29	Female	On-going care	15
30-34	Male	Discharged	35
30-34	Male	On-going care	14
30-34	Female	Discharged	66
30-34	Female	On-going care	17
35-39	Male	Discharged	43
35-39	Male	On-going care	12
35-39	Male	Died	2
35-39	Female	Discharged	41
35-39	Female	On-going care	14

age.factor	sex	status	n
40-44	Male	Discharged	33
40-44	Male	On-going care	14
40-44	Female	Discharged	35
40-44	Female	On-going care	12
40-44	Female	Died	1
45-49	Male	Discharged	37
45-49	Male	On-going care	13
45-49	Male	Died	3
45-49	Female	Discharged	40
45-49	Female	On-going care	9
45-49	Female	Died	1
50-54	Male	Discharged	41
50-54	Male	On-going care	13
50-54	Male	Died	1
50-54	Female	Discharged	37
50-54	Female	On-going care	15
50-54	Female	Died	1
55-59	Male	Discharged	41
55-59	Male	On-going care	22
55-59	Male	Died	3
55-59	Female	Discharged	38
55-59	Female	On-going care	16
55-59	Female	Died	2
55-59	NA	Discharged	1
60-64	Male	Discharged	43
60-64	Male	On-going care	14
60-64	Male	Died	4
60-64	Female	Discharged	28
60-64	Female	On-going care	17
60-64	Female	Died	3
65-69	Male	Discharged	40
65-69	Male	On-going care	29

age.factor	sex	status	n
65-69	Male	Died	4
65-69	Female	Discharged	18
65-69	Female	On-going care	13
65-69	Female	Died	2
70-74	Male	Discharged	54
70-74	Male	On-going care	25
70-74	Male	Died	8
70-74	Female	Discharged	43
70-74	Female	On-going care	18
70-74	Female	Died	7
75-79	Male	Discharged	43
75-79	Male	On-going care	28
75-79	Male	Died	19
75-79	Female	Discharged	32
75-79	Female	On-going care	12
75-79	Female	Died	11
80-84	Male	Discharged	39
80-84	Male	On-going care	18
80-84	Male	Died	17
80-84	Female	Discharged	34
80-84	Female	On-going care	16
80-84	Female	Died	8
85-89	Male	Discharged	20
85-89	Male	On-going care	21
85-89	Male	Died	11
85-89	Female	Discharged	25
85-89	Female	On-going care	16
85-89	Female	Died	6
90+	Male	Discharged	25
90+	Male	On-going care	10
90+	Male	Died	11
90+	Female	Discharged	9

age.factor	sex	status	n
90+	Female	On-going care	14
90+	Female	Died	16

Table for figure 4A

day	status	n
-3637	Ward	1
1	Discharged	1361
1	Ward	9835
1	Ward (O2)	4738
1	HDU/ICU	338
1	HDU/ICU (O2)	130
1	HDU/ICU (noninvasive)	380
1	ICU (ventilated)	144
1	Died	81
2	Discharged	3346
2	Ward	7149
2	Ward (O2)	3856
2	HDU/ICU	252
2	HDU/ICU (O2)	110
2	HDU/ICU (noninvasive)	326
2	ICU (ventilated)	90
2	Died	118
3	Discharged	4579
3	Ward	5955
3	Ward (O2)	3491
3	HDU/ICU	231
3	HDU/ICU (O2)	123
3	HDU/ICU (noninvasive)	326
3	ICU (ventilated)	89
3	Died	176
4	Discharged	5905
4	Ward	4952
4	Ward (O2)	3103

day	status	n
4	HDU/ICU	203
4	HDU/ICU (O2)	120
4	HDU/ICU (noninvasive)	316
4	ICU (ventilated)	80
4	Died	250
5	Discharged	7082
5	Ward	4120
5	Ward (O2)	2688
5	HDU/ICU	189
5	HDU/ICU (O2)	113
5	HDU/ICU (noninvasive)	304
5	ICU (ventilated)	75
5	Died	338
6	Discharged	8068
6	Ward	3499
6	Ward (O2)	2282
6	HDU/ICU	171
6	HDU/ICU (O2)	106
6	HDU/ICU (noninvasive)	292
6	ICU (ventilated)	66
6	Died	411
7	Discharged	8882
7	Ward	2959
7	Ward (O2)	1970
7	HDU/ICU	150
7	HDU/ICU (O2)	96
7	HDU/ICU (noninvasive)	266
7	ICU (ventilated)	61
7	Died	495
8	Discharged	9594
8	Ward	2537
8	Ward (O2)	1671

day	status	n
8	HDU/ICU	130
8	HDU/ICU (O2)	76
8	HDU/ICU (noninvasive)	241
8	ICU (ventilated)	60
8	Died	557
9	Discharged	10148
9	Ward	2232
9	Ward (O2)	1405
9	HDU/ICU	118
9	HDU/ICU (O2)	66
9	HDU/ICU (noninvasive)	211
9	ICU (ventilated)	55
9	Died	615
10	Discharged	10592
10	Ward	1974
10	Ward (O2)	1189
10	HDU/ICU	110
10	HDU/ICU (O2)	57
10	HDU/ICU (noninvasive)	186
10	ICU (ventilated)	54
10	Died	681

Table for figure 4B

day	status	n
-3637	Ward	1
1	Discharged	140
1	Ward	1154
1	Ward (O2)	576
1	HDU/ICU	51
1	HDU/ICU (O2)	8
1	HDU/ICU (noninvasive)	38
1	ICU (ventilated)	14
1	Died	7

day	status	n
2	Discharged	457
2	Ward	680
2	Ward (O2)	364
2	HDU/ICU	36
2	HDU/ICU (O2)	6
2	HDU/ICU (noninvasive)	18
2	ICU (ventilated)	3
2	Died	10
3	Discharged	550
3	Ward	530
3	Ward (O2)	323
3	HDU/ICU	33
3	HDU/ICU (O2)	7
3	HDU/ICU (noninvasive)	20
3	ICU (ventilated)	3
3	Died	20
4	Discharged	705
4	Ward	408
4	Ward (O2)	277
4	HDU/ICU	28
4	HDU/ICU (O2)	7
4	HDU/ICU (noninvasive)	17
4	ICU (ventilated)	3
4	Died	34
5	Discharged	834
5	Ward	312
5	Ward (O2)	229
5	HDU/ICU	25
5	HDU/ICU (O2)	7
5	HDU/ICU (noninvasive)	15
5	ICU (ventilated)	3
5	Died	51

day	status	n
6	Discharged	932
6	Ward	250
6	Ward (O2)	192
6	HDU/ICU	19
6	HDU/ICU (O2)	7
6	HDU/ICU (noninvasive)	13
6	ICU (ventilated)	1
6	Died	60
7	Discharged	1017
7	Ward	196
7	Ward (O2)	154
7	HDU/ICU	16
7	HDU/ICU (O2)	4
7	HDU/ICU (noninvasive)	13
7	ICU (ventilated)	1
7	Died	72
8	Discharged	1086
8	Ward	159
8	Ward (O2)	121
8	HDU/ICU	12
8	HDU/ICU (O2)	4
8	HDU/ICU (noninvasive)	10
8	ICU (ventilated)	1
8	Died	80
9	Discharged	1136
9	Ward	141
9	Ward (O2)	82
9	HDU/ICU	10
9	HDU/ICU (O2)	3
9	HDU/ICU (noninvasive)	10
9	Died	90
10	Discharged	1184

day	status	n
10	Ward	110
10	Ward (O2)	65
10	HDU/ICU	9
10	HDU/ICU (O2)	2
10	HDU/ICU (noninvasive)	7
10	Died	95