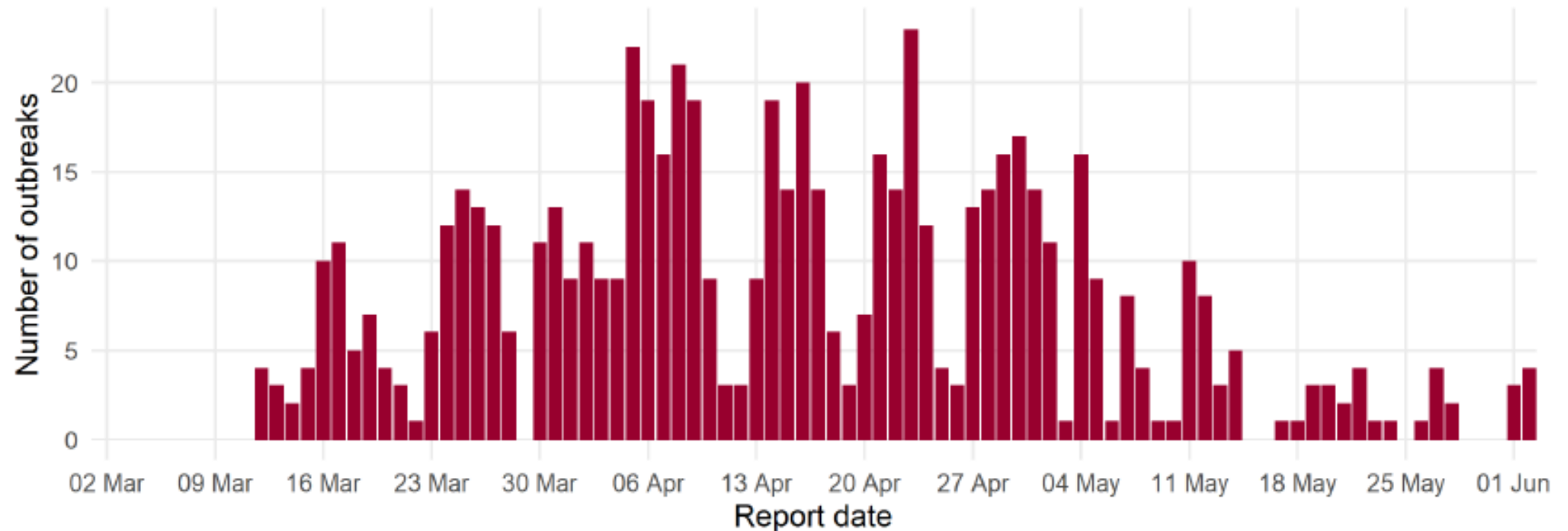


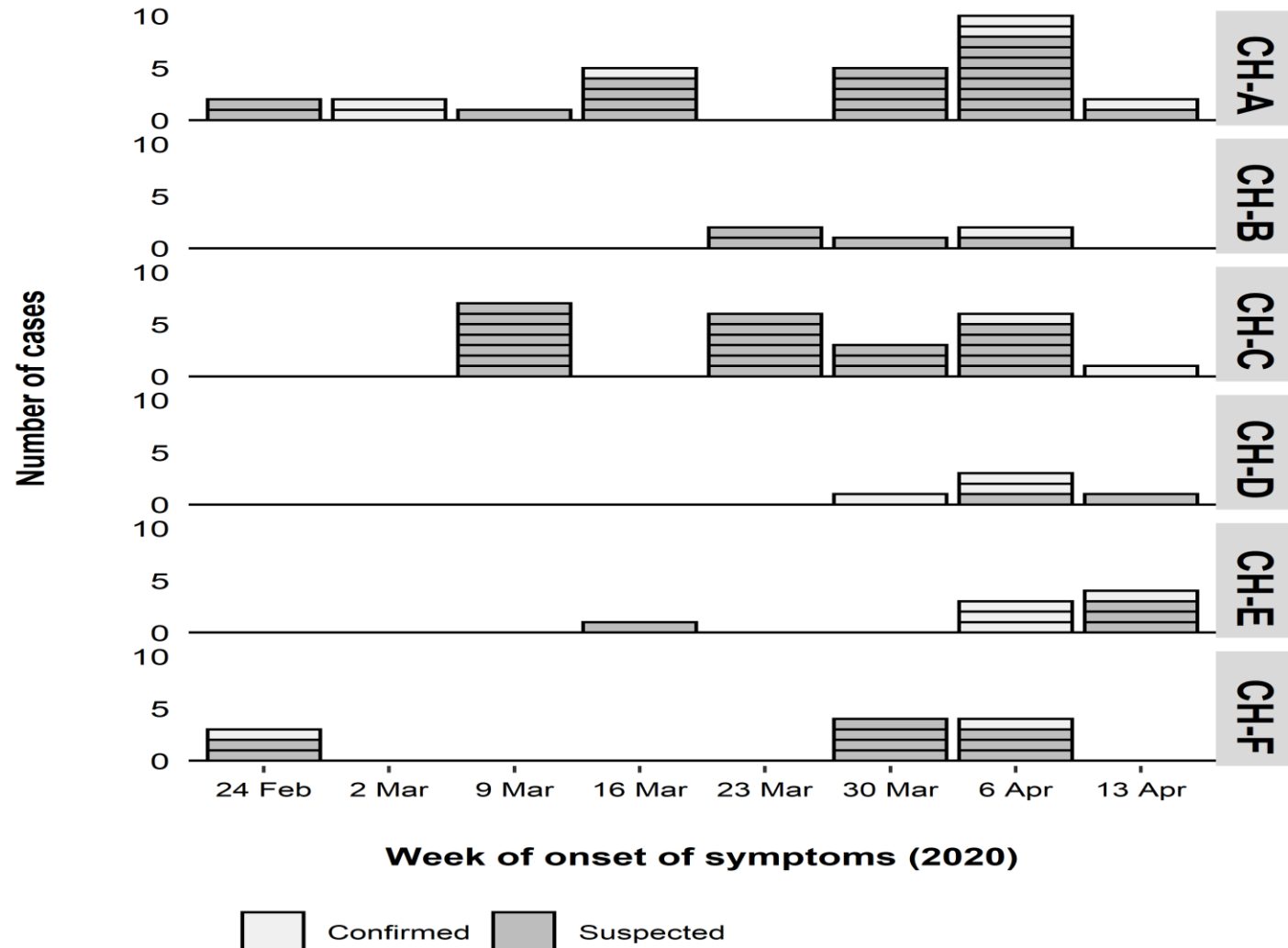
Enhanced Outbreak Investigations- London Care Homes- April 2020

Figure 5: Outbreaks of suspected or confirmed COVID-19 in care homes in London PHE centre by report date



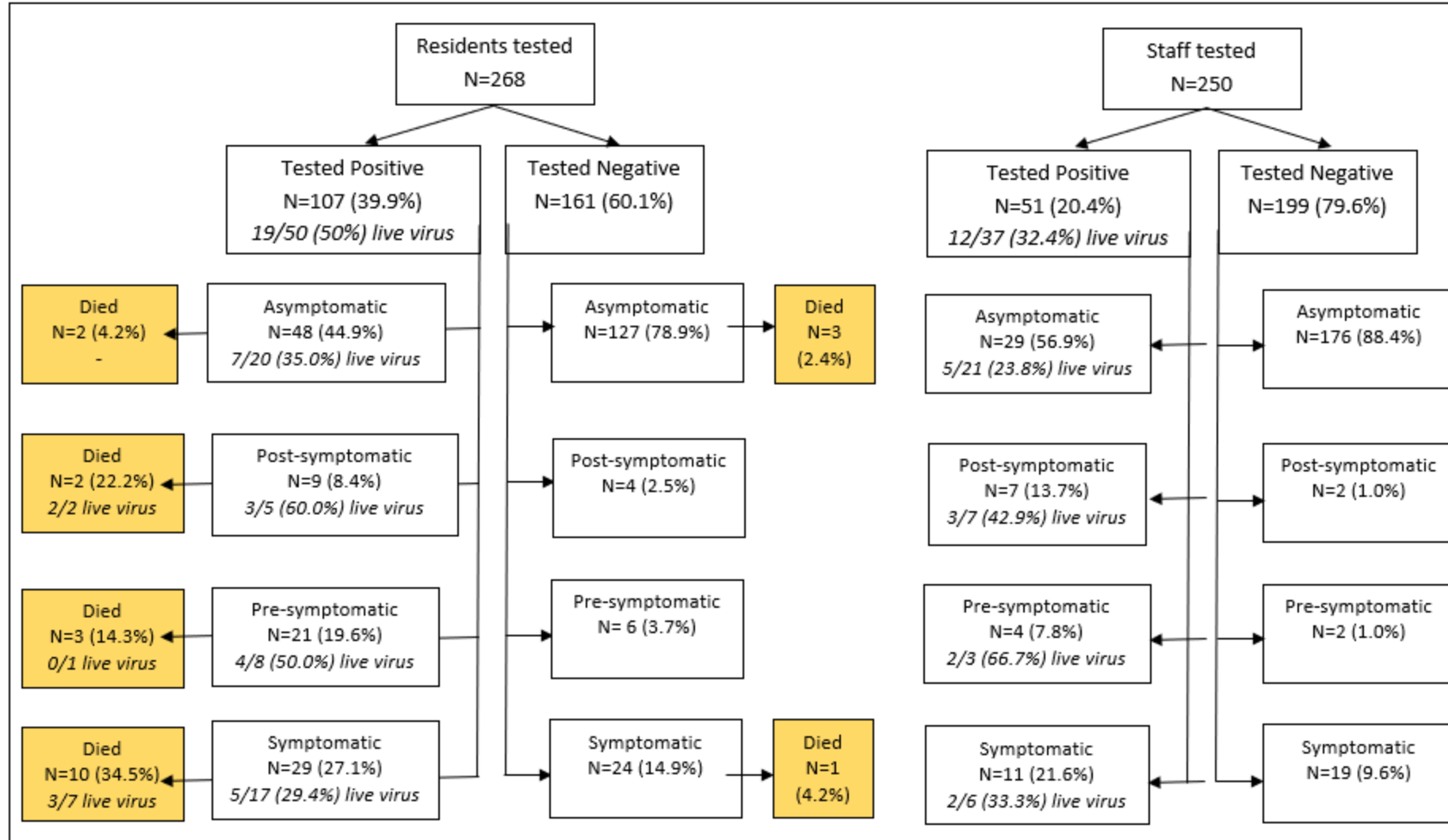
Excludes outbreaks with unassigned PHE Centre

State of Outbreak in Care Homes at time of investigation

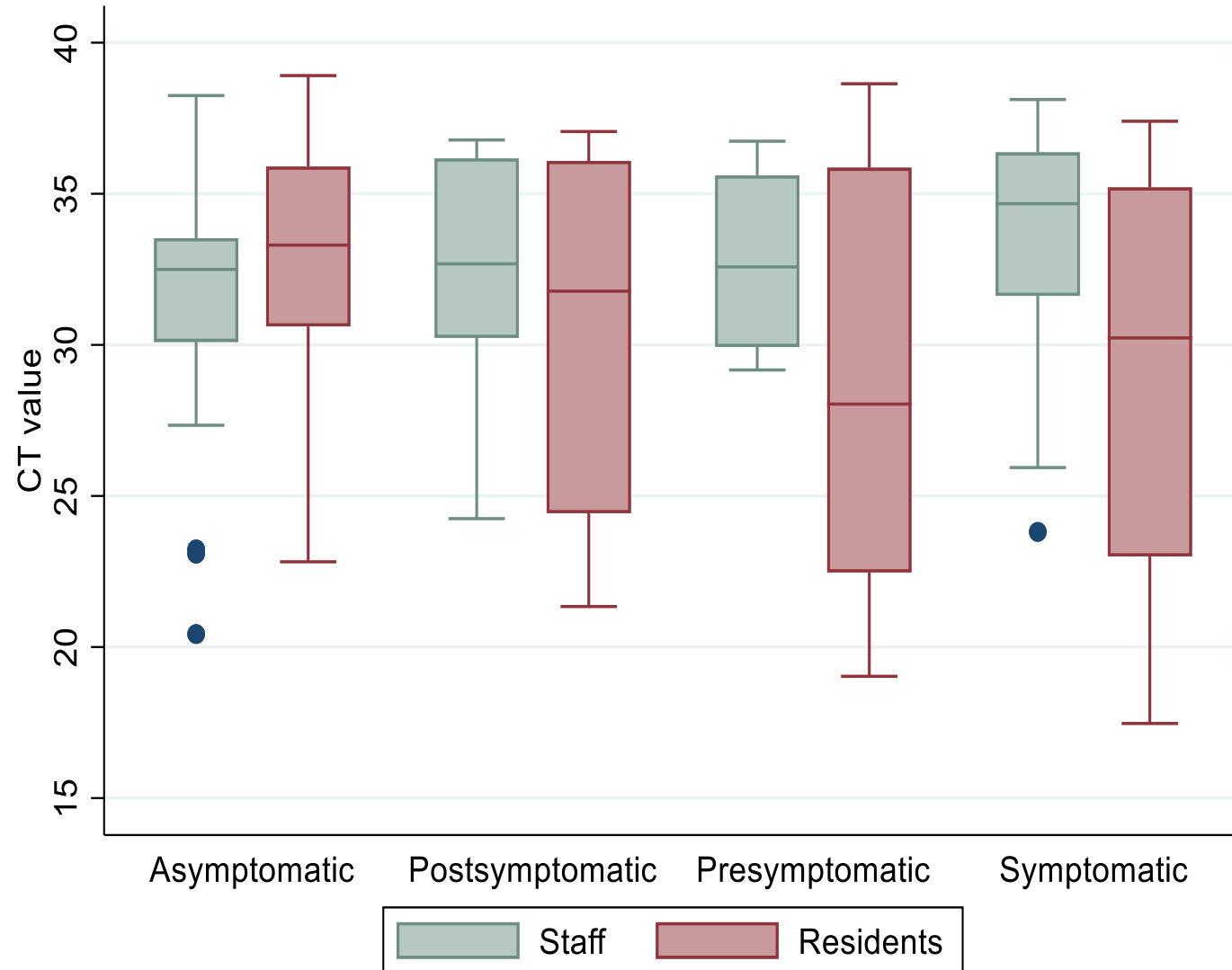


Mass swabbing took place 13 to 17 of April

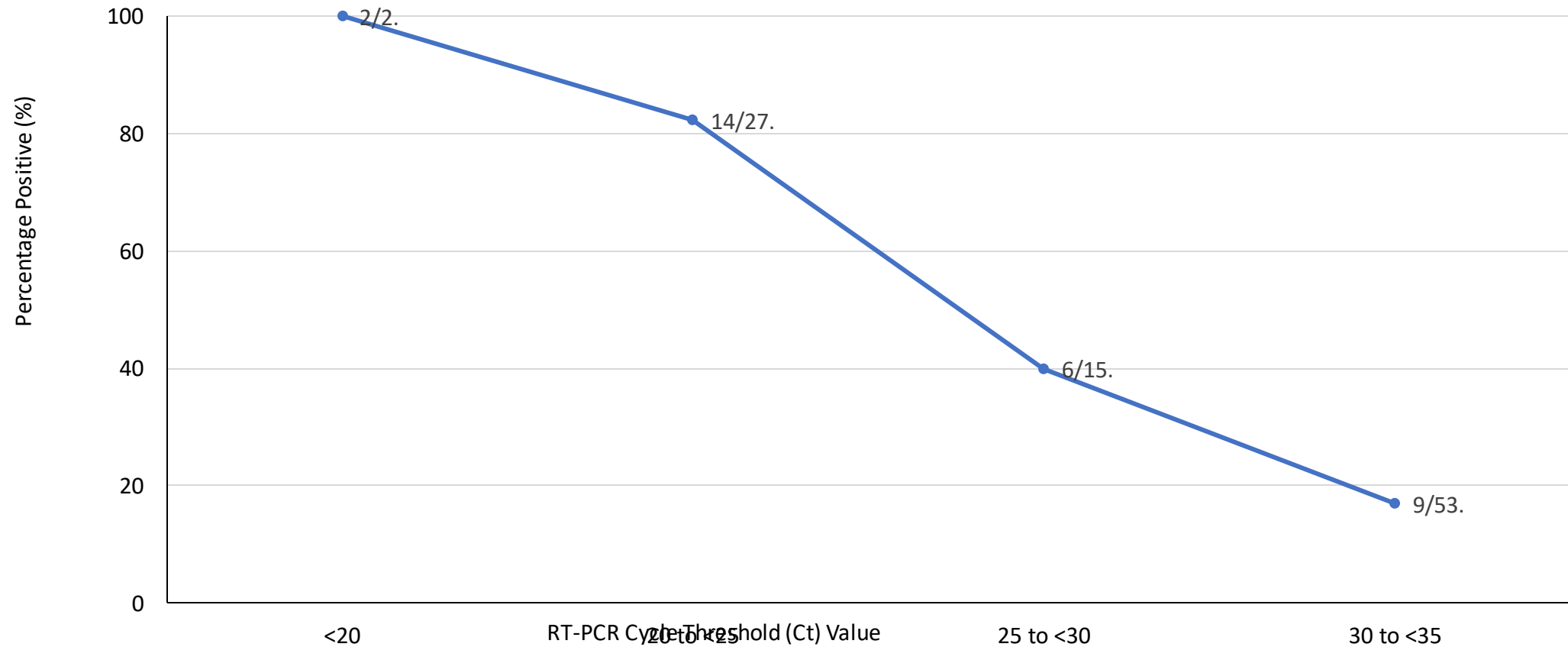
SARS-CoV-2 positivity, symptoms, live virus isolation and deaths in residents and staff across six London care homes experiencing a COVID-19 outbreak during April 2020



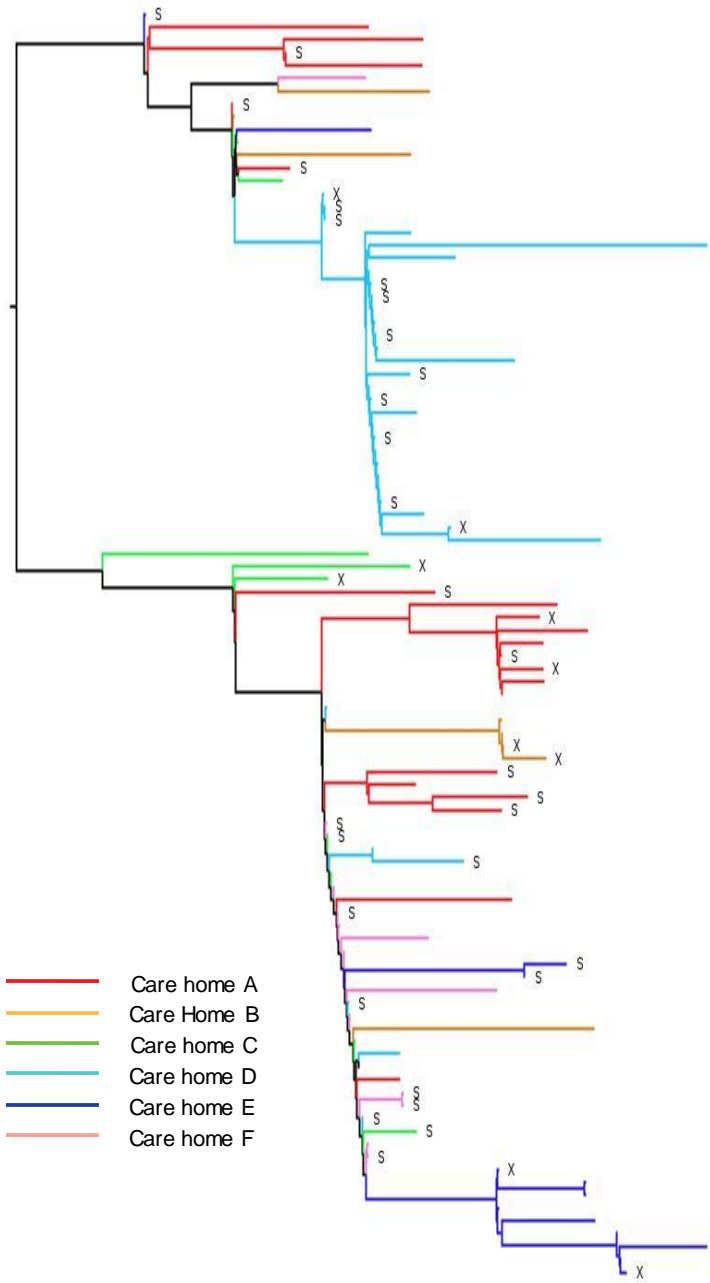
Cycle Threshold values for asymptomatic, post-symptomatic, pre-symptomatic and symptomatic residents and staff



Virus recovery vs PCR Staff & residents



COG Global Lineage



B.2.1

B.1

Maximum Likelihood phylogeny of 99 SARS-CoV-2 genomes from individuals within six care homes. Coloured branches are used to indicate the care home, staff are annotated on the tree with (S), genomes from patients who died after testing positive for covid-19 are shown with (X). Unannotated tips in the phylogeny represent genomes from care home residents.

Key Messages

- Across the six care homes, 107/268 (39.9%) residents were SARS CoV-2 positive, only 29 (27.1%) was symptomatic at the time of testing, 48 (44.9%) remained asymptomatic throughout
- Case-fatality was highest among symptomatic SARS-CoV-2 positive residents 10/29 (34.5%) compared to asymptomatic 2/48 (4.2%)
- Among staff, 51/250 (20.4%) were SARS CoV-2 positive and 29/51 (56.9%) remained asymptomatic.
- Asymptomatic but positive residents and staff are potential reservoirs for on-going transmission).
- Symptom-based screening alone is not sufficient for outbreak control, wider testing required
- RT-PCR cycle thresholds and live virus recovery were similar between symptomatic/asymptomatic residents/staff.
- WGS identified multiple introductions of different SARS-CoV-2 strains into individual care homes. SARS-CoV-2 strains from residents and staff had identical sequences, as did strains from fatal and non-fatal cases.