

Blaydon Quarry – Drone images – 11 August 2021



Looking towards cell 8 from above cell 6, with Stargate in the background



Cell 8 from above cell 5 (at Liddell's Fell Road boundary), with cell 7 and the old phase 1 landfill in the background

Blaydon Quarry – Drone images – 11 August 2021

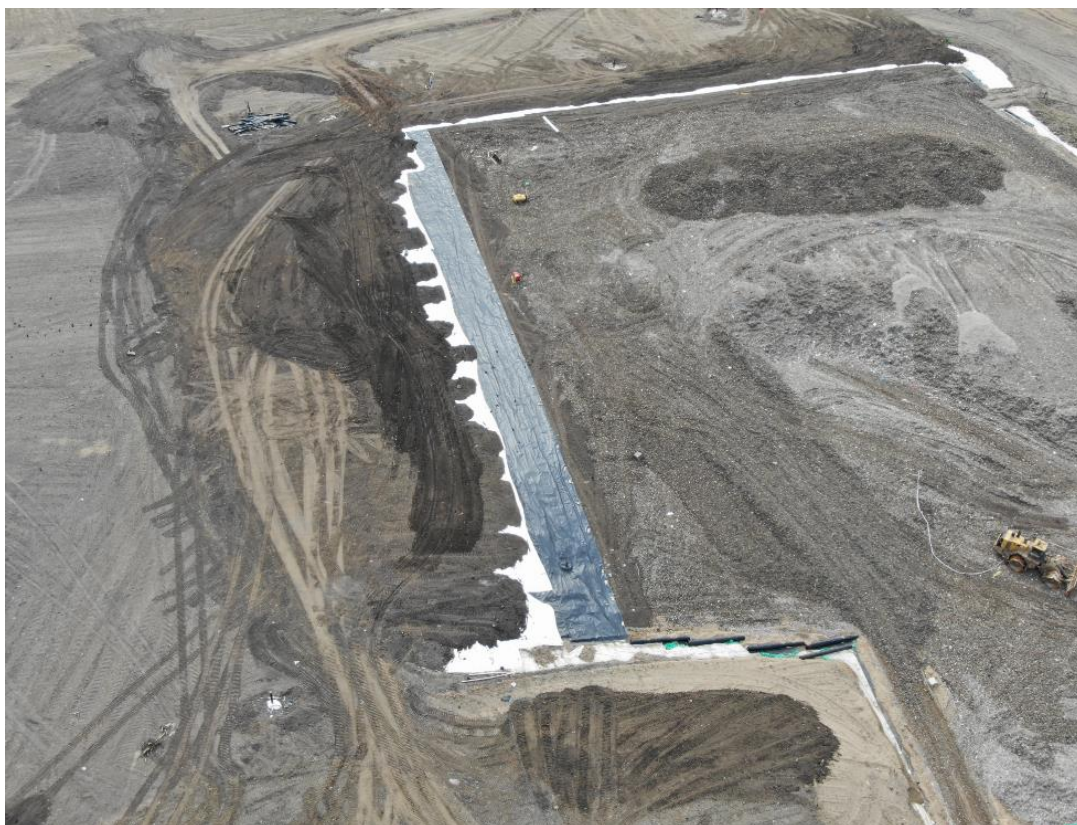


Cell 8 from 'traffic light' corner of the site. You can see the old Tarmac/Tilcon weighbridge in the bottom right corner from the sites' days as a working quarry.



Cell 8 from Lead Road, with area still to be capped marked in red. Infrastructure visible below this area is the gas engine compound.

Blaydon Quarry – Drone images – 11 August 2021



Close up of remaining area to cap in cell 8 indicating the LLDPE (linear low density polyethylene) plastic (black material) and the protector geotextile (white material)



Another perspective of the remaining area to cap with cell 7 and cell 2 off to the right.

Blaydon Quarry – Drone images – 11 August 2021



Cell 3 (along Longridge road boundary) with cell 6 (unseeded) to the left. Southeast surface water lagoon/soakaway to the top of the picture with a small puddle in.