



17 August 2021

Year: 2021 Week: 32

## In This Issue:

- Key messages.
- Diagnostic indicators at a glance.
- Weekly report statistics.
- Total attendances.
- Respiratory.
- Gastrointestinal.
- Cardiac.
- Notes and caveats.
- Acknowledgements.

## Key messages

Data to: 15 August 2021

During week 32, COVID-19-like attendances remained stable. Acute bronchiolitis attendances remained stable nationally but elevated in children aged less than 5 years (figures 6 & 6a). In addition, acute bronchiolitis attendances increased in the South East, South West and East of England, but decreased in the North East, North West and Yorkshire and Humber (figure 6b).

Baselines have been remodelled to account for changes due to COVID-19 and additional, new modelled lines have been added to the charts to represent expected levels if COVID-19 had not occurred.

Please see notes and caveats for information about the ED syndromic indicators including important caveats around the interpretation.

A Heat-Health Watch system operates in England from 1 June to 15 September each year. As part of the Heatwave Plan for England, the PHE Real-time Syndromic Surveillance team will be routinely monitoring the public health impact of hot weather using syndromic surveillance data during this period. <http://www.metoffice.gov.uk/weather/uk/heathealth/>

Heat-health watch level (current reporting week): Level 1: **Summer preparedness**

## Diagnostic indicators at a glance:

Further details on the syndromic indicators reported and baselines can be found on page 10.

Indicator	Current trend	Level
COVID-19-like	no trend	-
Respiratory	decreasing	above baseline
Acute Respiratory Infection	no trend	above baseline
Bronchiolitis	no trend	above baseline
Influenza-like illness	decreasing	similar to baseline
Pneumonia	no trend	above baseline
Asthma	decreasing	above baseline
Gastrointestinal	decreasing	similar to baseline
Gastroenteritis	decreasing	above baseline
Cardiac	no trend	below baseline
Myocardial Ischaemia	no trend	below baseline
Alcohol intoxication	no trend	below baseline
Heat/Sun stroke	no trend	below baseline

## EDSSS weekly report statistics

Only Type 1 EDs meeting the weekly reporting criteria are included (see page 10 for details).

\*max EDs included across full time period reported in charts, individual days may include fewer EDs.

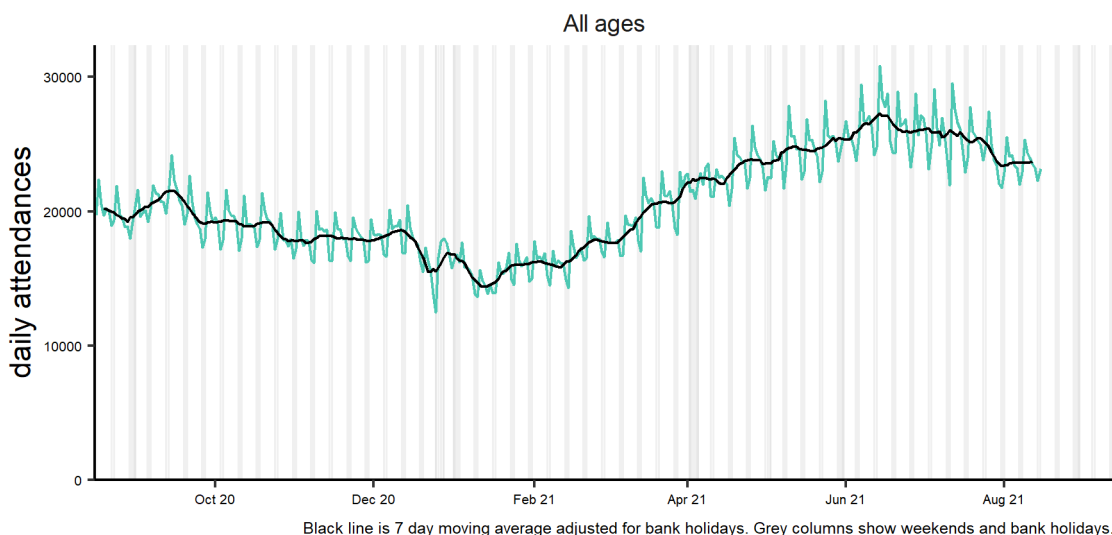
Date	Total Attendances	Diagnoses Coded Number	Diagnoses Coded %	Type 1 EDs Included
09/08/2021	25,324	15,959	63.0%	99
10/08/2021	24,362	15,676	64.3%	99
11/08/2021	23,990	15,336	63.9%	99
12/08/2021	23,518	15,385	65.4%	99
13/08/2021	23,240	15,649	67.3%	99
14/08/2021	22,268	13,855	62.2%	99
15/08/2021	23,201	15,502	66.8%	99
<b>Total</b>	<b>165,903</b>	<b>107,362</b>	<b>64.7%</b>	<b>(max)* 99</b>

**1: Total attendances.**

Daily number of total attendances recorded, across the EDSSS network.

(see page 6 for ED inclusion criteria).

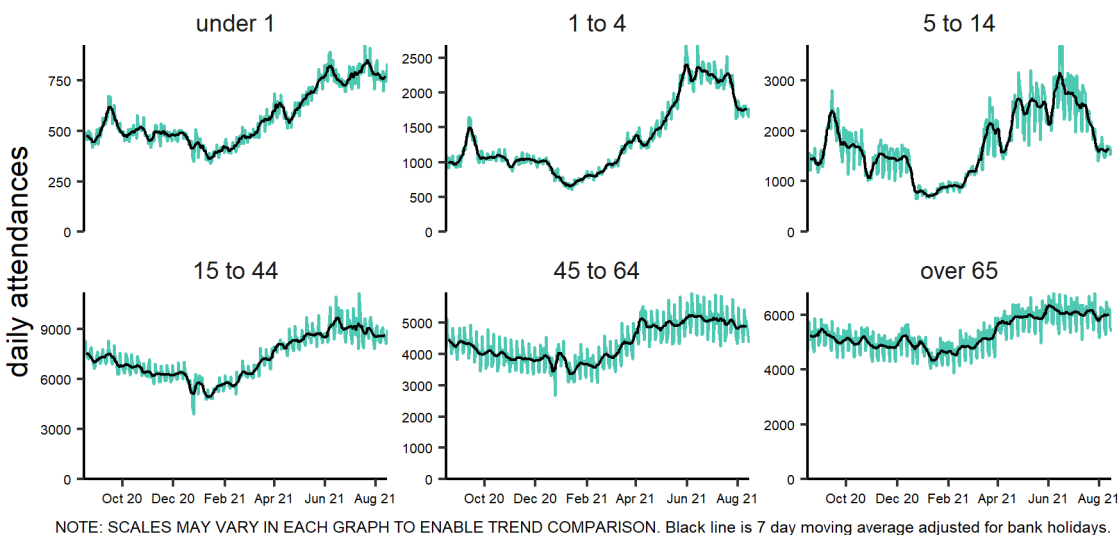
Total attendances 16/08/2020 - 15/08/2021



**1a: Daily attendances by age: numbers.**

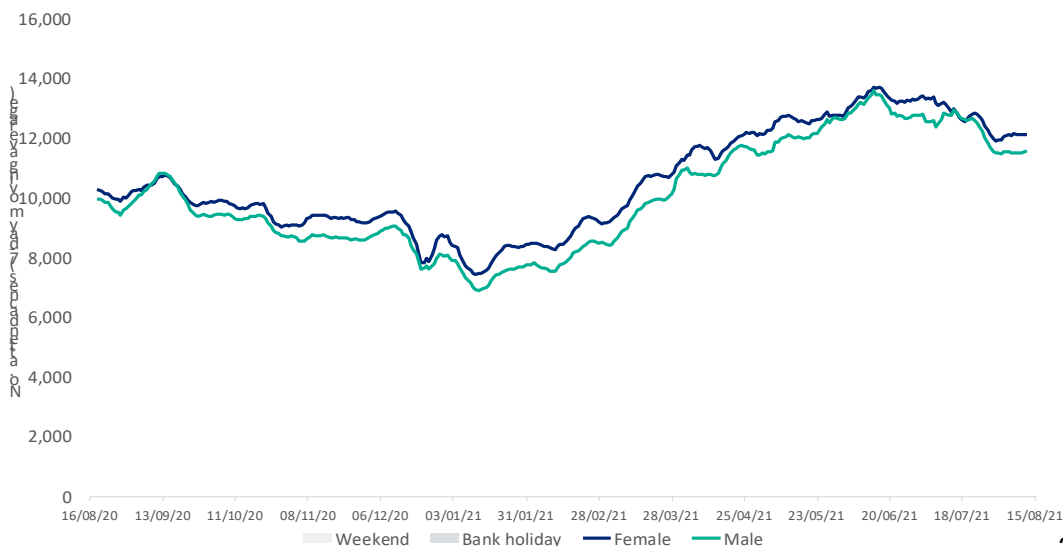
Daily number and 7-day moving average of total attendances, by age group.

Total attendances by age group (years) 16/08/2020 - 15/08/2021



**2: Daily attendances by gender: numbers**

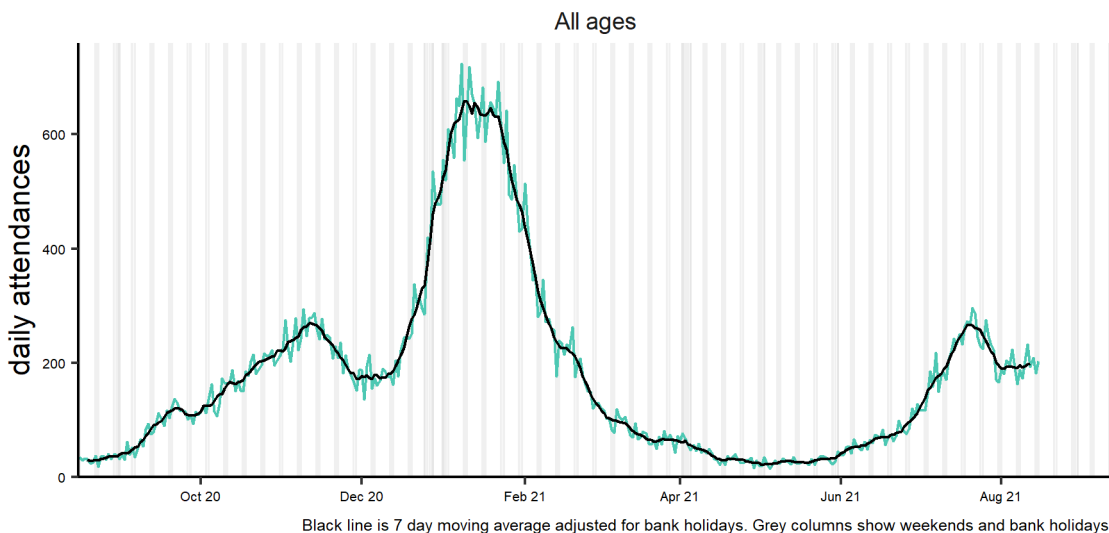
Daily number of total attendances by gender, recorded across the EDSSS network (shown as a 7-day moving average). Please note: indeterminate gender is not shown due to small numbers



**3: COVID-19-like.**

Daily number of attendances recorded as COVID-19-like attendances across the EDSSS network.

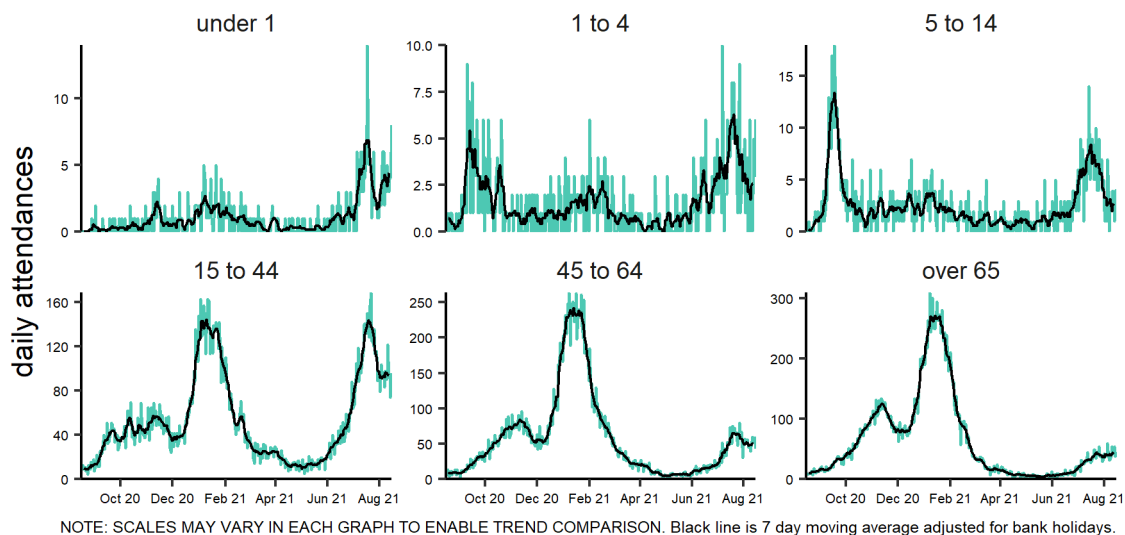
Covid-19-like 16/08/2020 - 15/08/2021



**3a: COVID-19-like by age group.**

Daily number and 7 day moving average of COVID-19-like attendances within each age group.

Covid-19-like by age group (years) 16/08/2020 - 15/08/2021

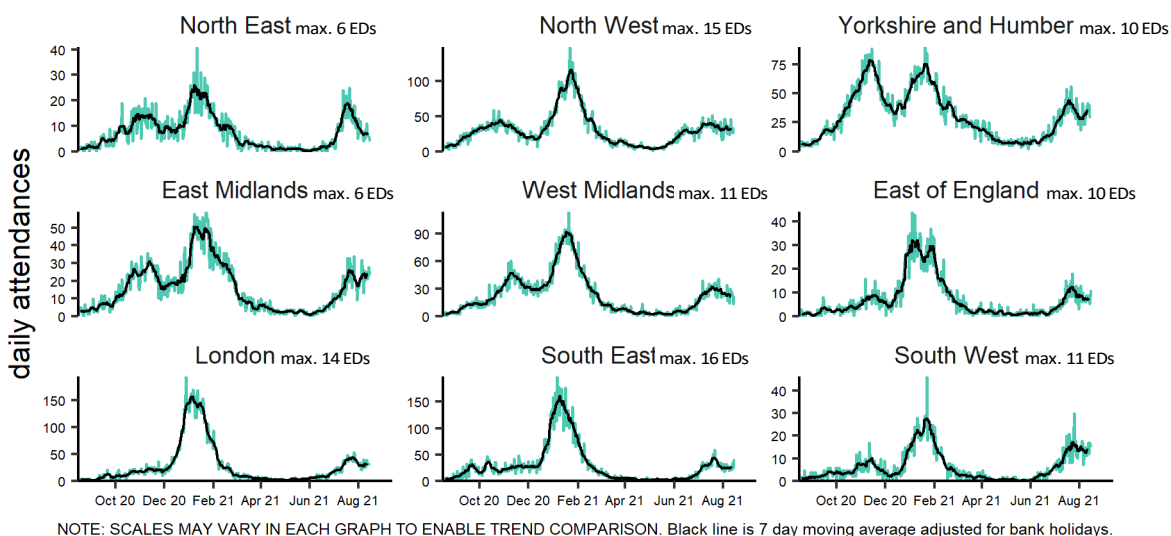


**3b: COVID-19-like by PHE Centre**

Daily attendances and 7 day moving average of COVID-19-like attendances within each PHE Centre (with the maximum number of EDs included in each time series).

Please see ['notes and caveats'](#) for information on how EDs are selected for inclusion each week.

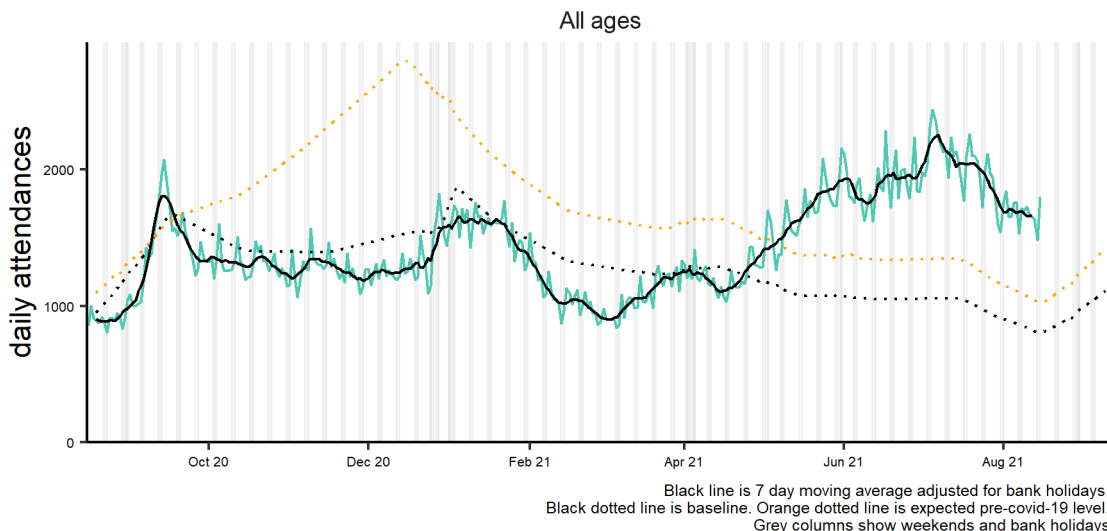
Covid-19-like by PHE centre 16/08/2020 - 15/08/2021



**4: Respiratory.**

Daily number of attendances recorded as respiratory attendances across the EDSSS network.

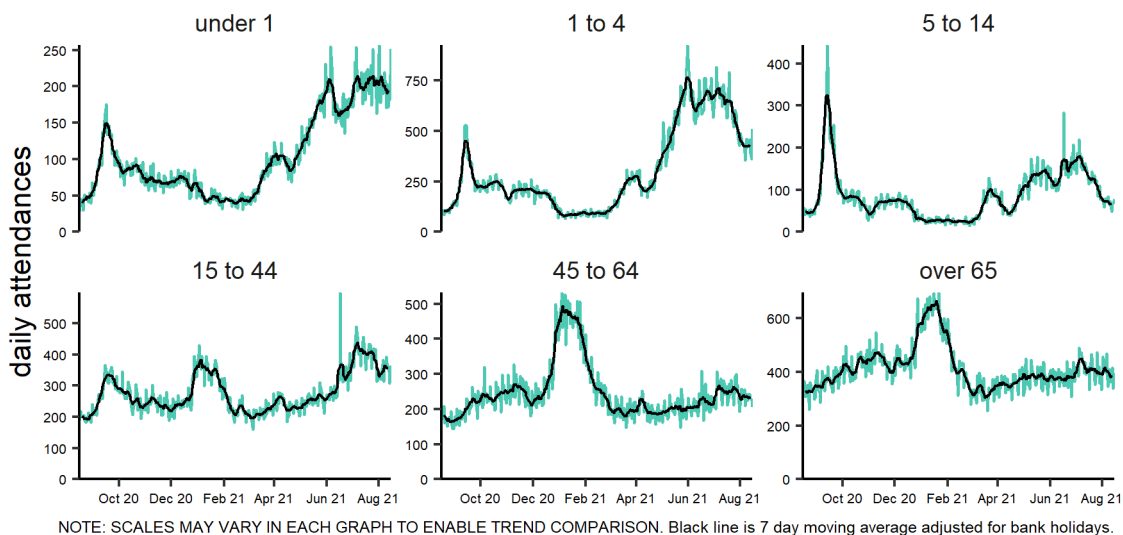
Respiratory conditions 16/08/2020 - 15/08/2021



**5: Respiratory by age group.**

Daily number and 7 day moving average of attendances within each age group.

Respiratory conditions by age group (years) 16/08/2020 - 15/08/2021

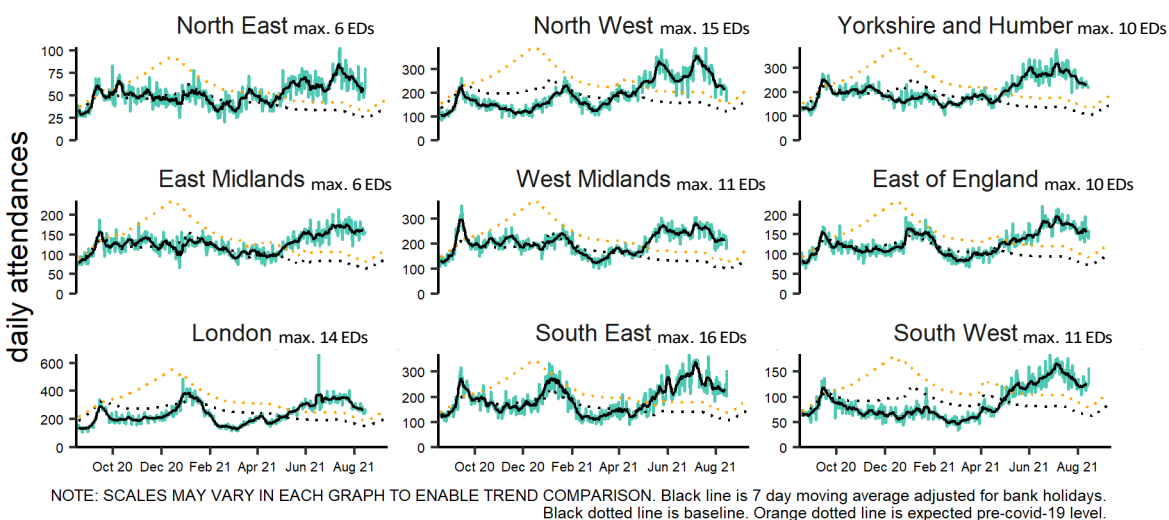


**5b: Respiratory by PHE Centre**

Daily attendances and 7 day moving average of attendances within each PHE Centre (with the maximum number of EDs included in each time series).

Please see 'notes and caveats' for information on how EDs are selected for inclusion each week.

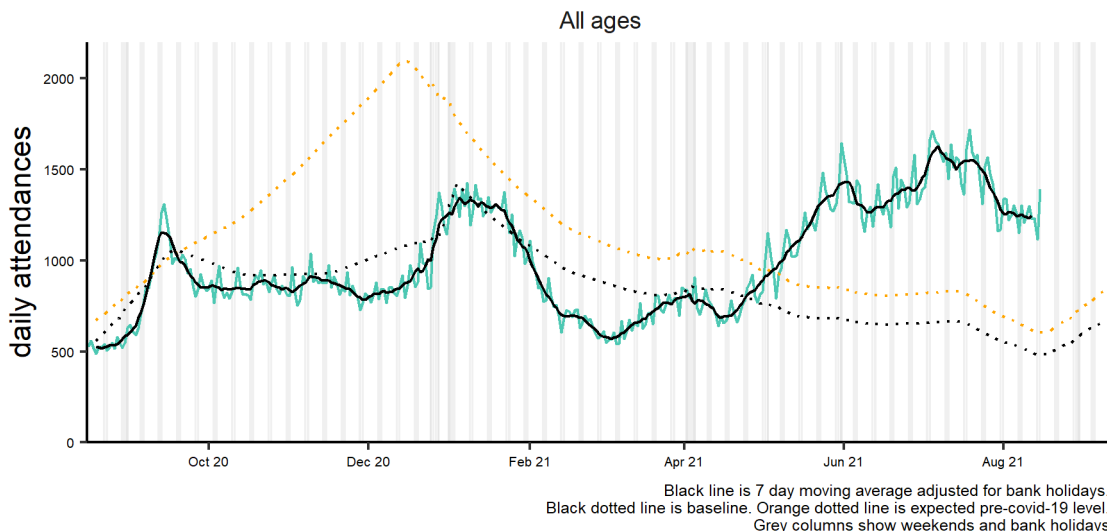
Respiratory conditions by PHE centre 16/08/2020 - 15/08/2021



**5: Acute respiratory infection.**

Daily number of attendances recorded as respiratory attendances across the EDSSS network.

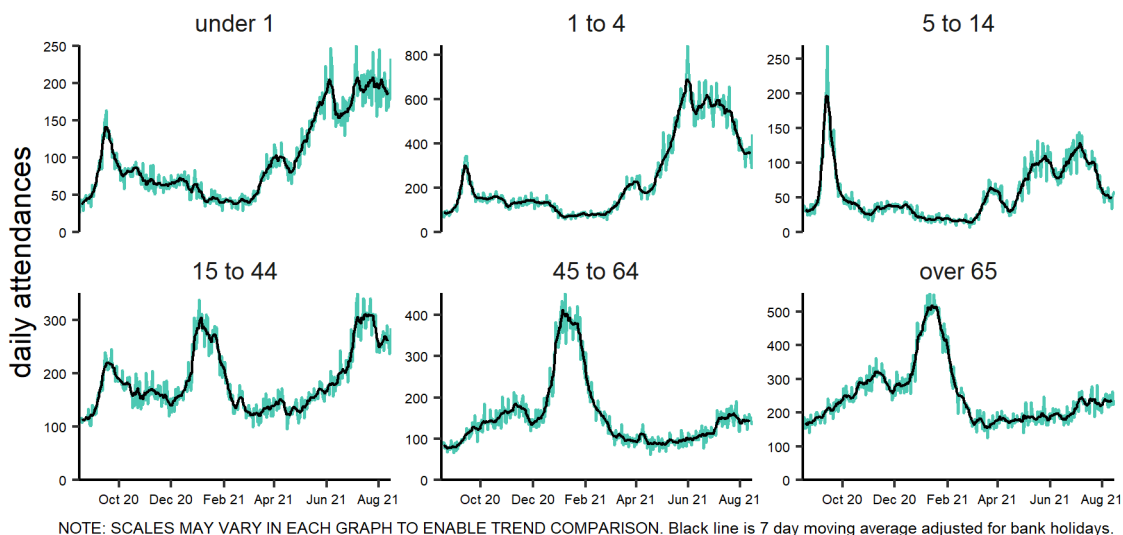
Acute respiratory infection 16/08/2020 - 15/08/2021



**5a: Acute respiratory infection by age group.**

Daily number and 7 day moving average of attendances within each age group.

Acute respiratory infection by age group (years) 16/08/2020 - 15/08/2021

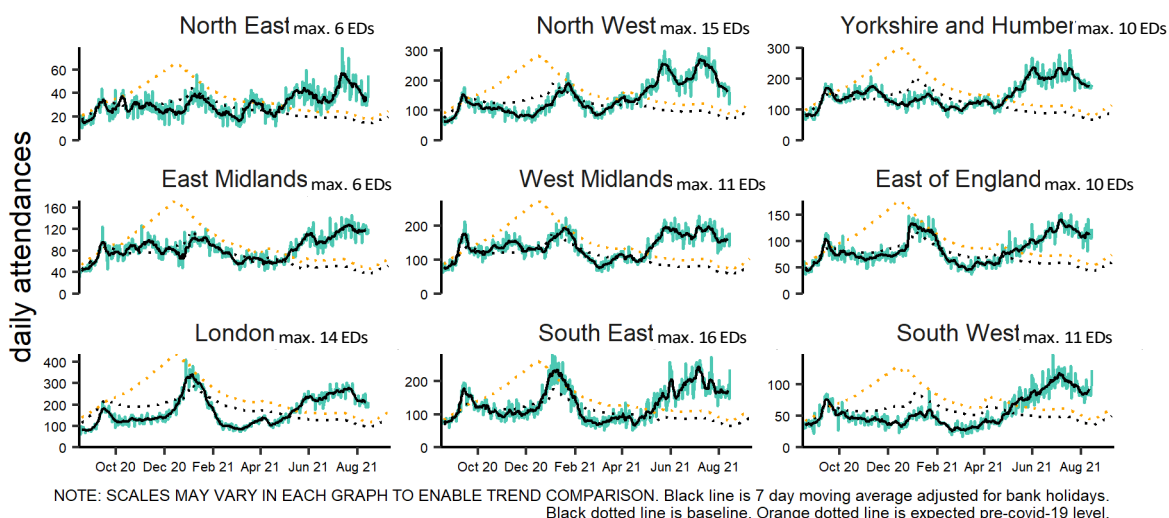


**5a: Acute Respiratory Infection by PHE centre.**

Daily attendances and 7 day moving average of attendances within each PHE Centre (with the maximum number of EDs included in each time series).

Please see 'notes and caveats' for information on how EDs are selected for inclusion each week.

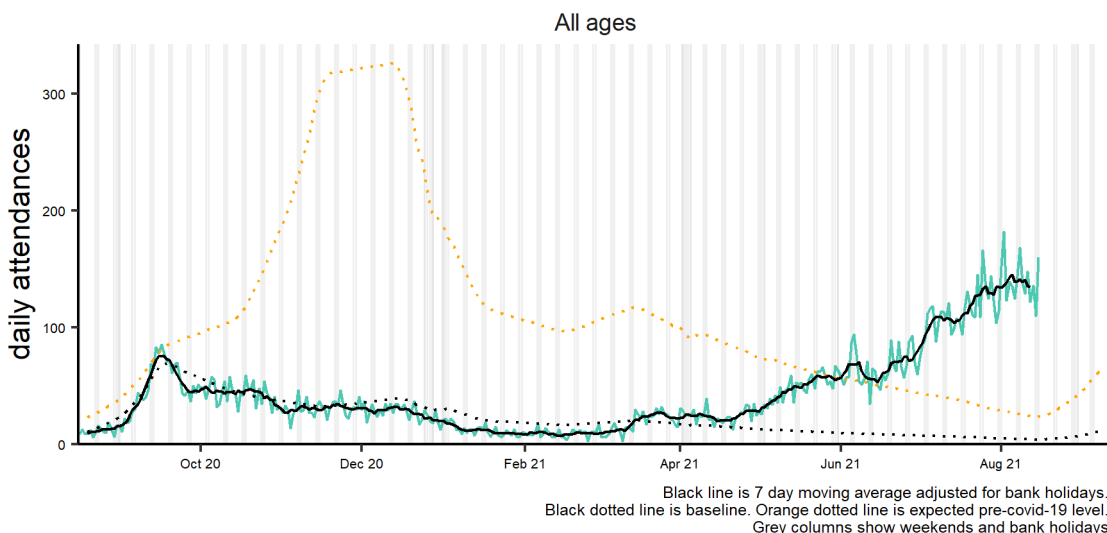
Acute respiratory infection by PHE centre 16/08/2020 - 15/08/2021



**6: Bronchiolitis/bronchitis.**

Daily number of attendances recorded as bronchiolitis/ acute bronchitis attendances across the EDSSS network.

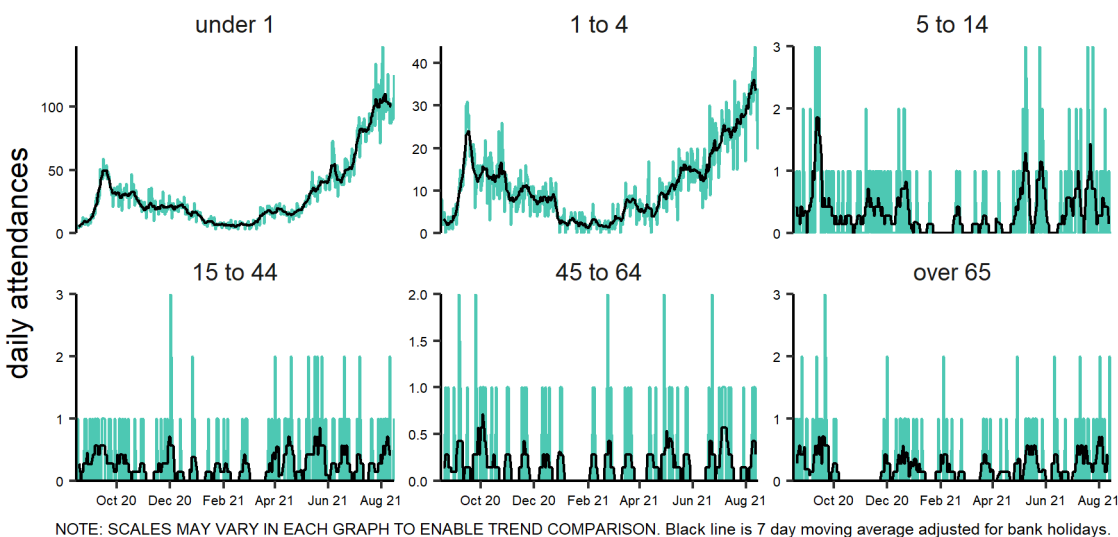
Acute bronchiolitis 16/08/2020 - 15/08/2021



**6a: Bronchiolitis/bronchitis by age group**

Daily number and 7 day moving average of attendances within each age group.

Acute bronchiolitis by age group (years) 16/08/2020 - 15/08/2021

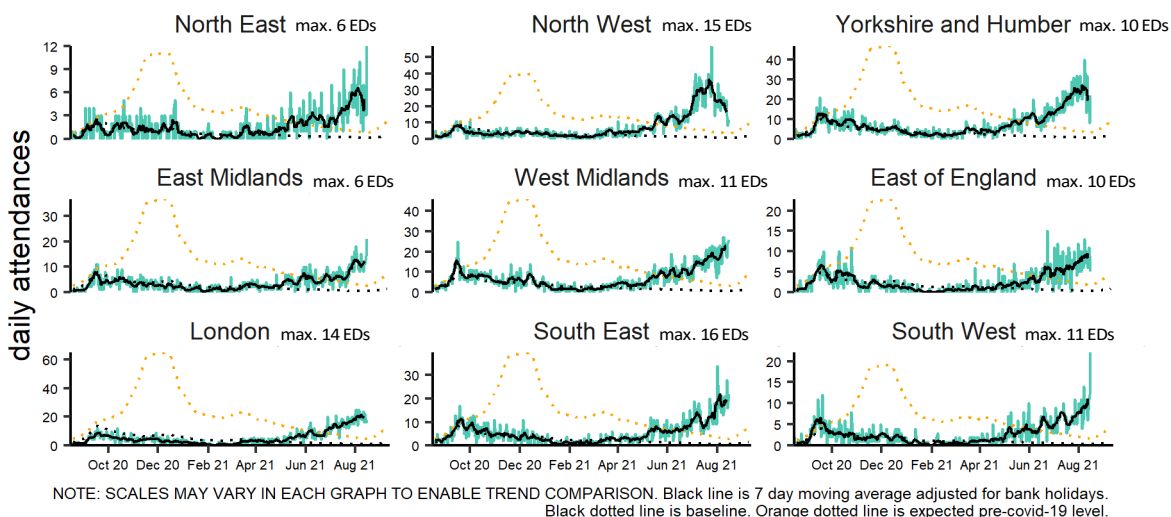


**6b: Bronchiolitis/bronchitis by PHE centre.**

Daily attendances and 7 day moving average of attendances within each PHE Centre (with the maximum number of EDs included in each time series).

Please see 'notes and caveats' for information on how EDs are selected for inclusion each week.

Acute bronchiolitis by PHE centre 16/08/2020 - 15/08/2021

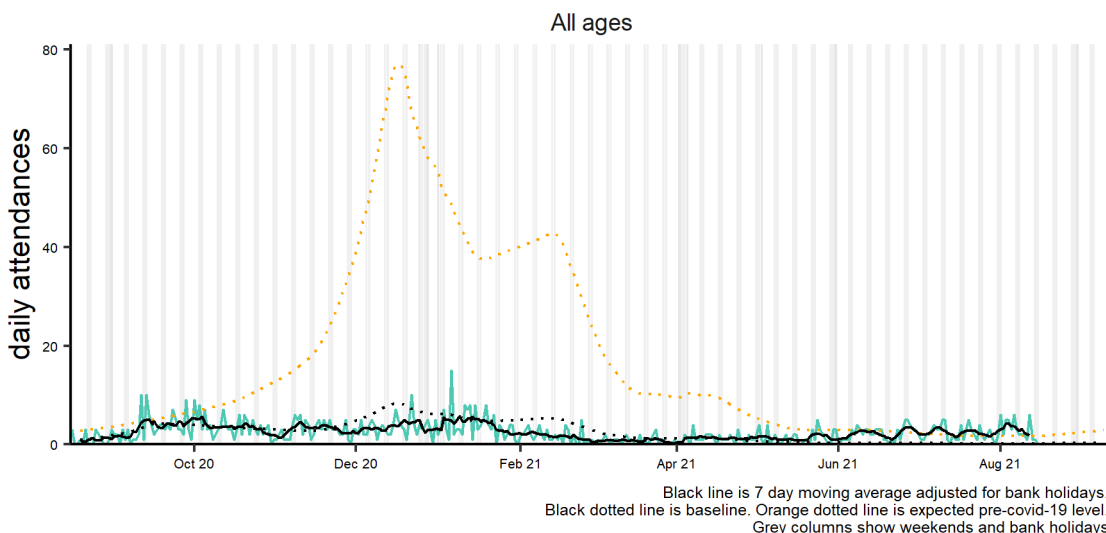




**7: Influenza-like Illness.**

Daily number of attendances recorded as ILI attendances across the EDSSS network.

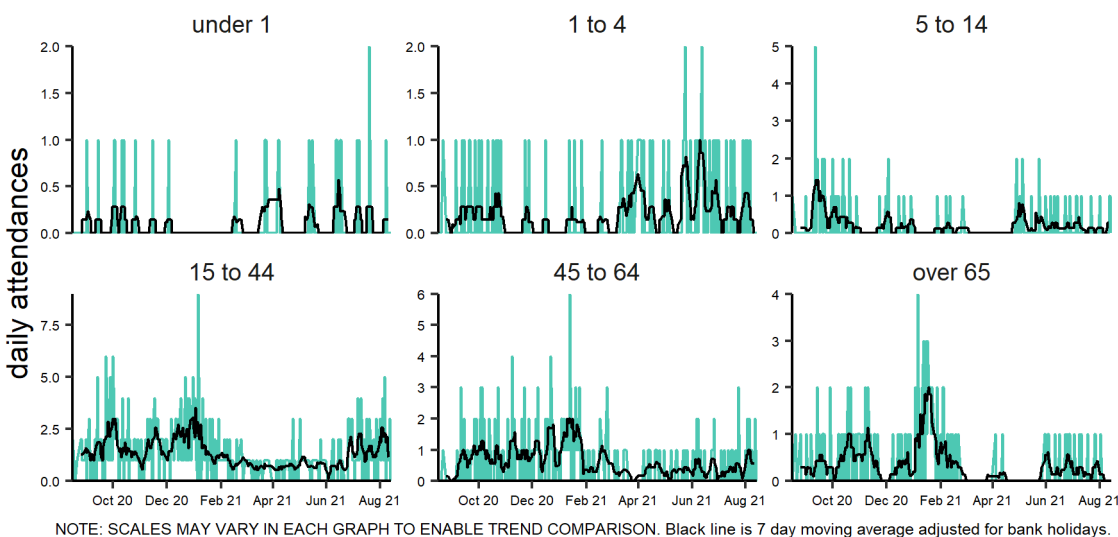
Influenza-like illness 16/08/2020 - 15/08/2021



**7a: Influenza-like Illness by age group**

Daily number and 7 day moving average of attendances within each age group.

Influenza-like illness by age group (years) 16/08/2020 - 15/08/2021

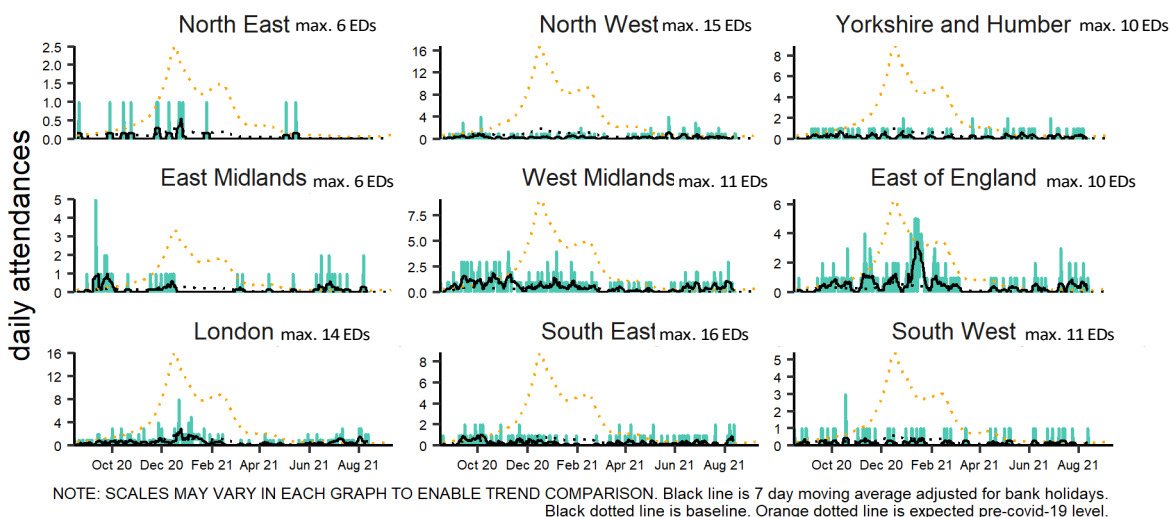


**7b: Influenza-like Illness. By PHE centre**

Daily attendances and 7 day moving average of attendances within each PHE Centre (with the maximum number of EDs included in each time series).

Please see 'notes and caveats' for information on how EDs are selected for inclusion each week.

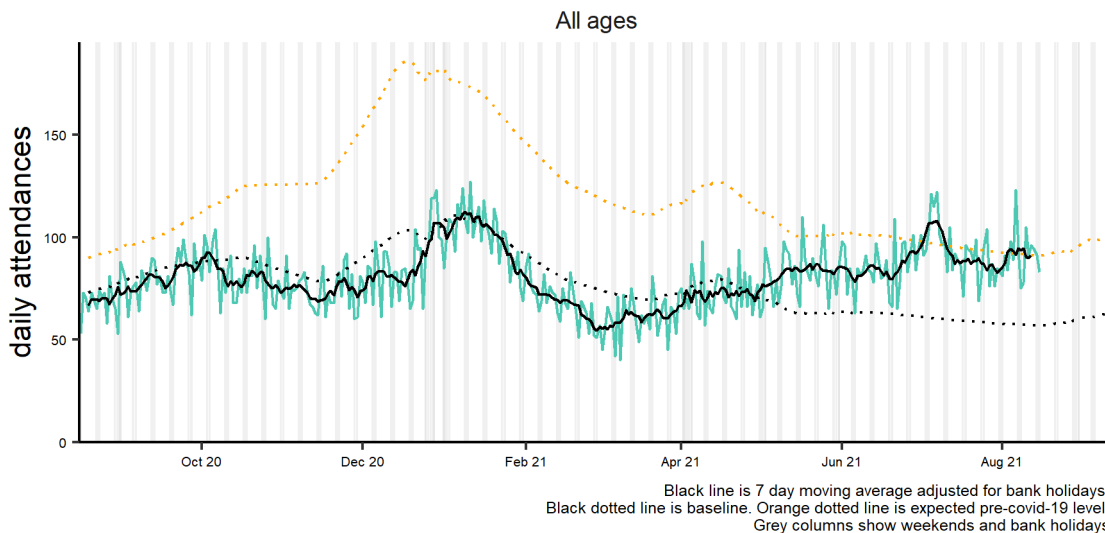
Influenza-like illness by PHE centre 16/08/2020 - 15/08/2021



**8. Pneumonia**

7 day moving average of pneumonia attendances within each age group.

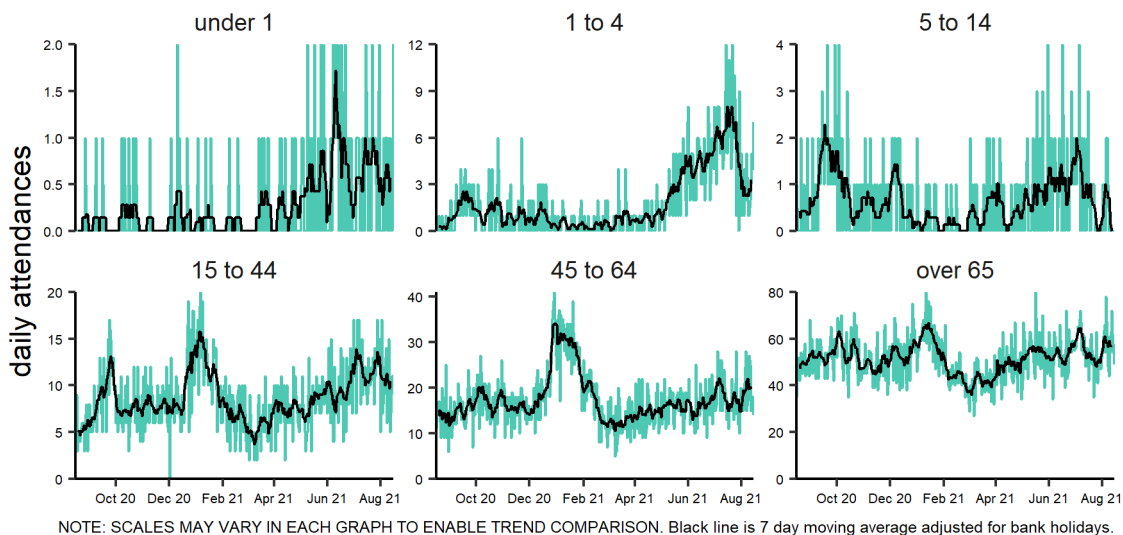
Pneumonia 16/08/2020 - 15/08/2021



**8a: Pneumonia. by age group**

Daily number and 7 day moving average of attendances within each age group.

Pneumonia by age group (years) 16/08/2020 - 15/08/2021

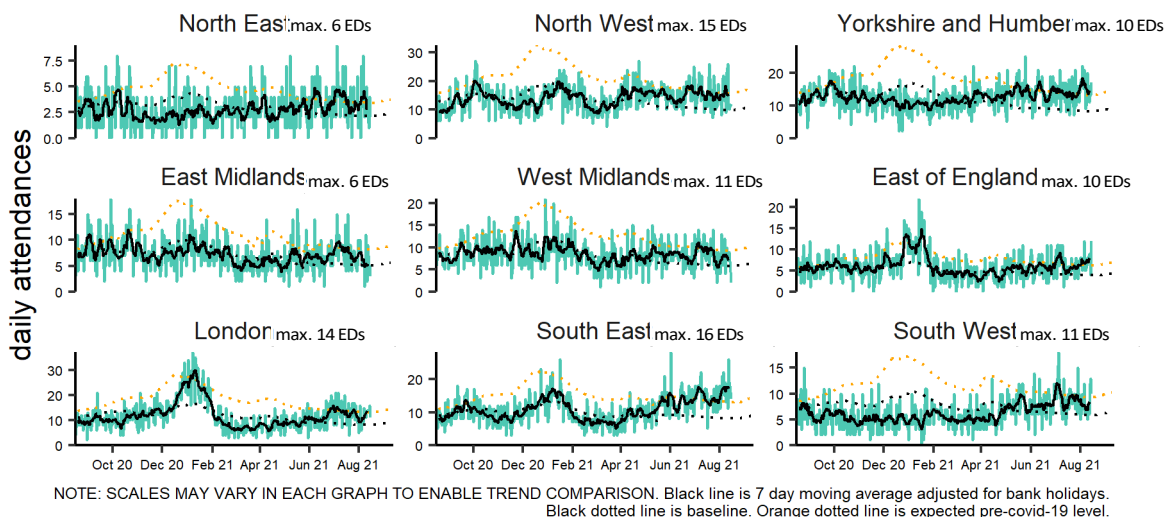


**8b: Pneumonia by PHE centre.**

Daily attendances and 7 day moving average of attendances within each PHE Centre (with the maximum number of EDs included in each time series).

Please see 'notes and caveats' for information on how EDs are selected for inclusion each week.

Pneumonia by PHE centre 16/08/2020 - 15/08/2021

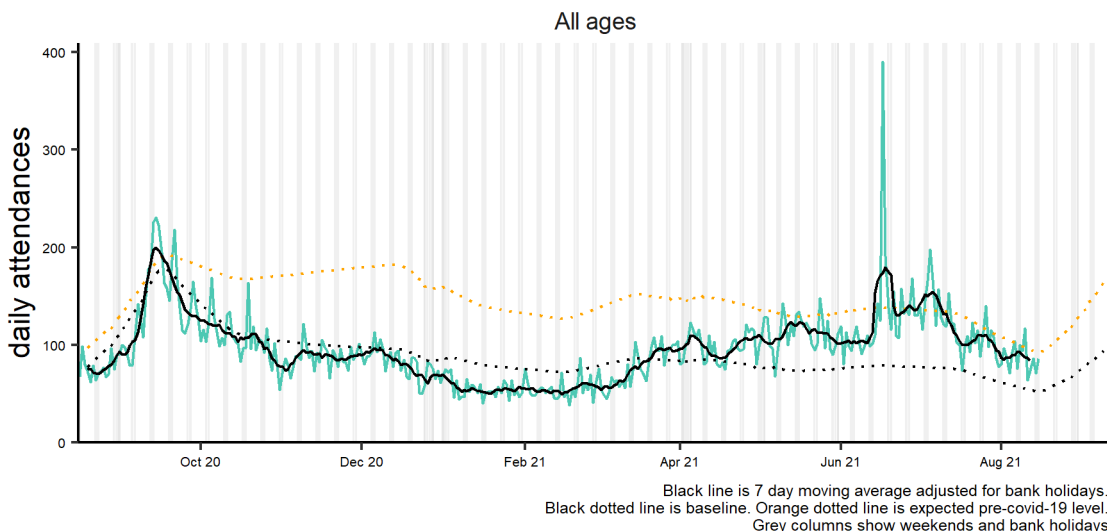




**9: Asthma.**

Daily number of attendances recorded as asthma/wheeze/difficulty breathing across the EDSSS network.

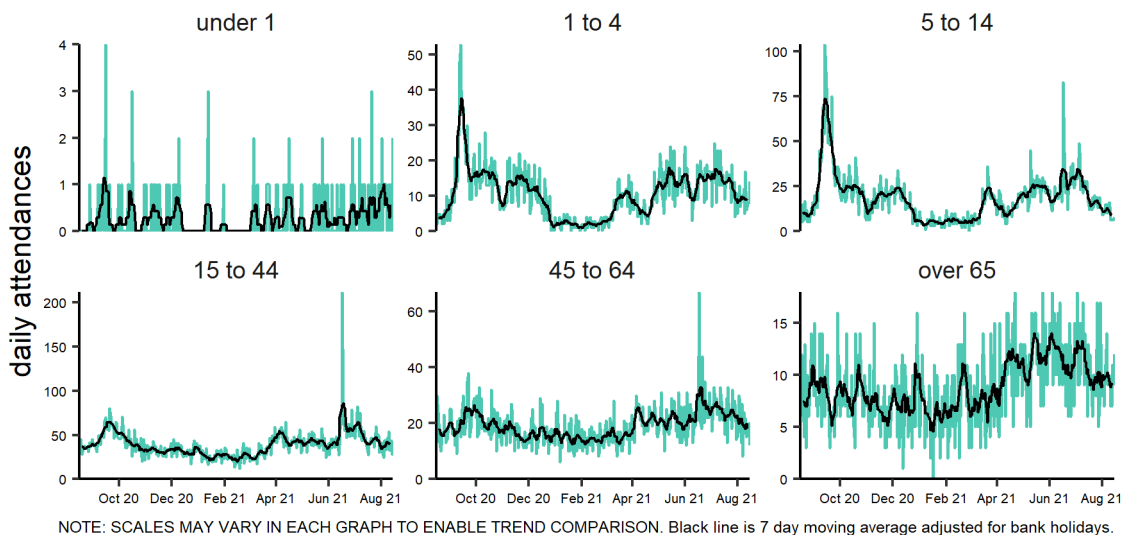
Asthma 16/08/2020 - 15/08/2021



**9a: Asthma by age group.**

Daily number and 7 day moving average of attendances within each age group.

Asthma by age group (years) 16/08/2020 - 15/08/2021

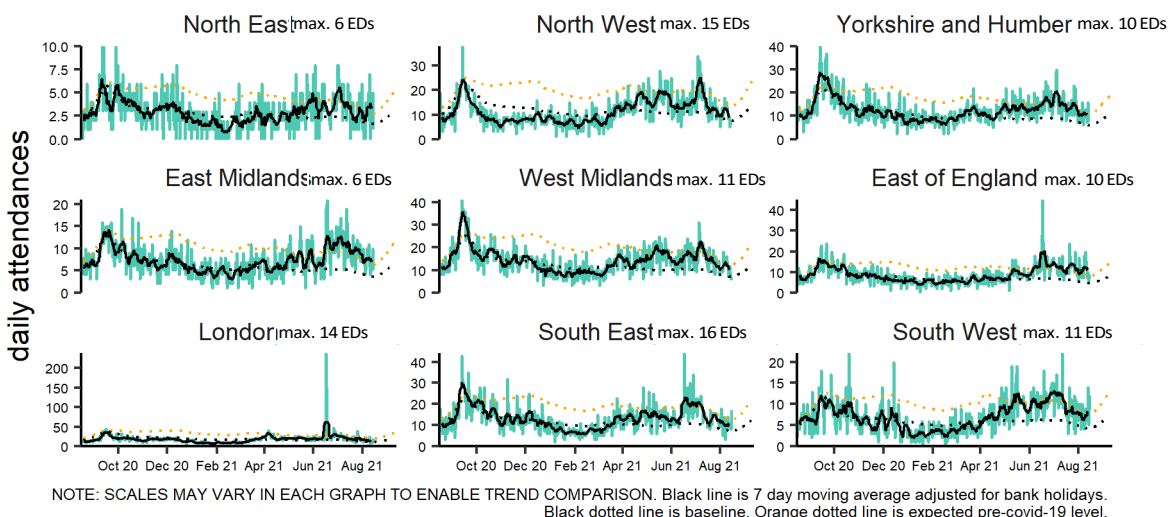


**9b: Asthma by PHE centre.**

Daily attendances and 7 day moving average of attendances within each PHE Centre (with the maximum number of EDs included in each time series).

Please see 'notes and caveats' for information on how EDs are selected for inclusion each week.

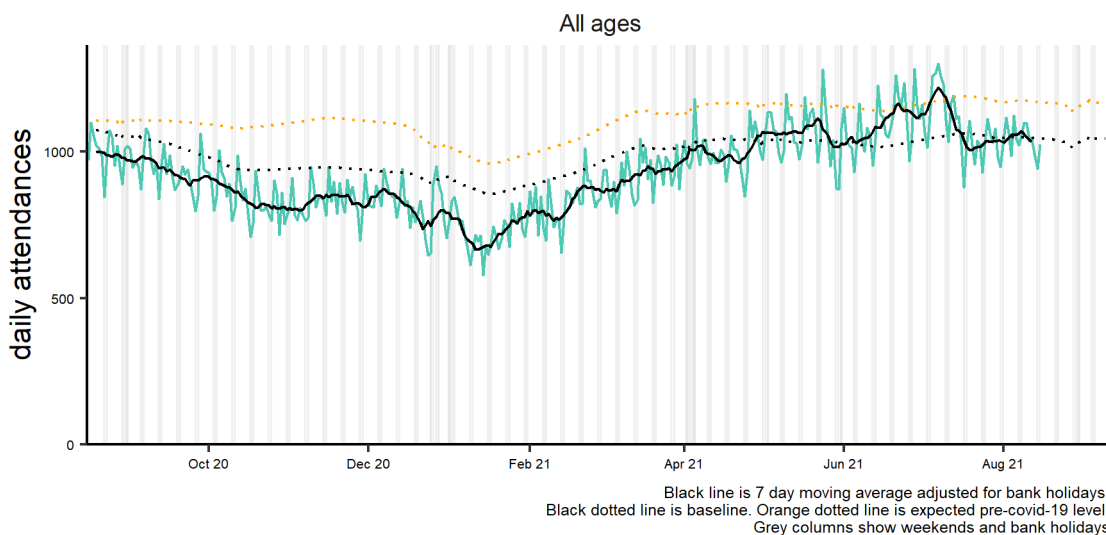
Asthma by PHE centre 16/08/2020 - 15/08/2021



**10: Gastrointestinal.**

Daily number of attendances recorded as gastrointestinal attendances across the EDSSS network.

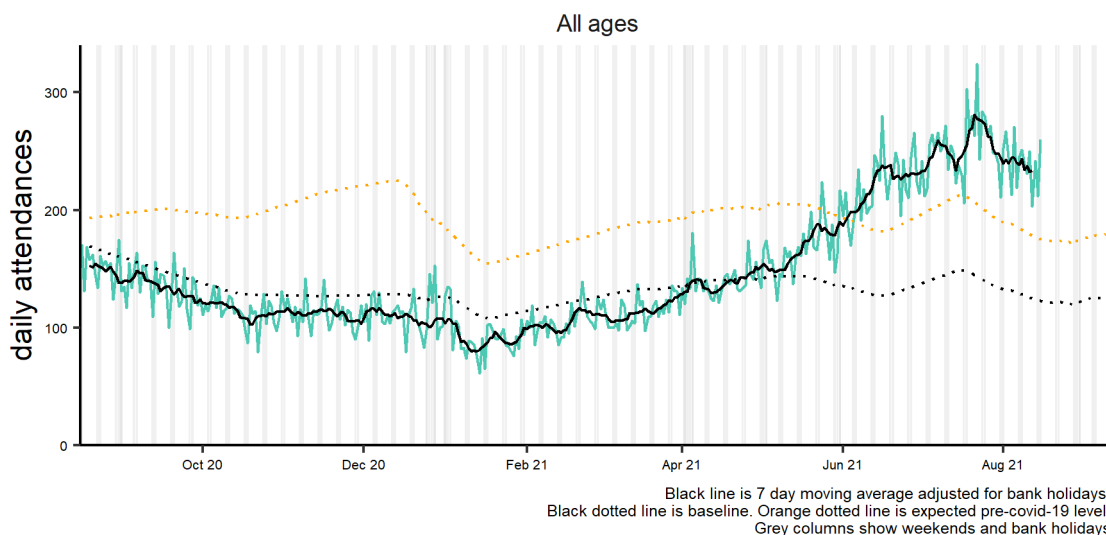
Gastrointestinal conditions 16/08/2020 - 15/08/2021



**11: Gastroenteritis**

Daily number of attendances recorded as gastroenteritis attendances across the EDSSS network.

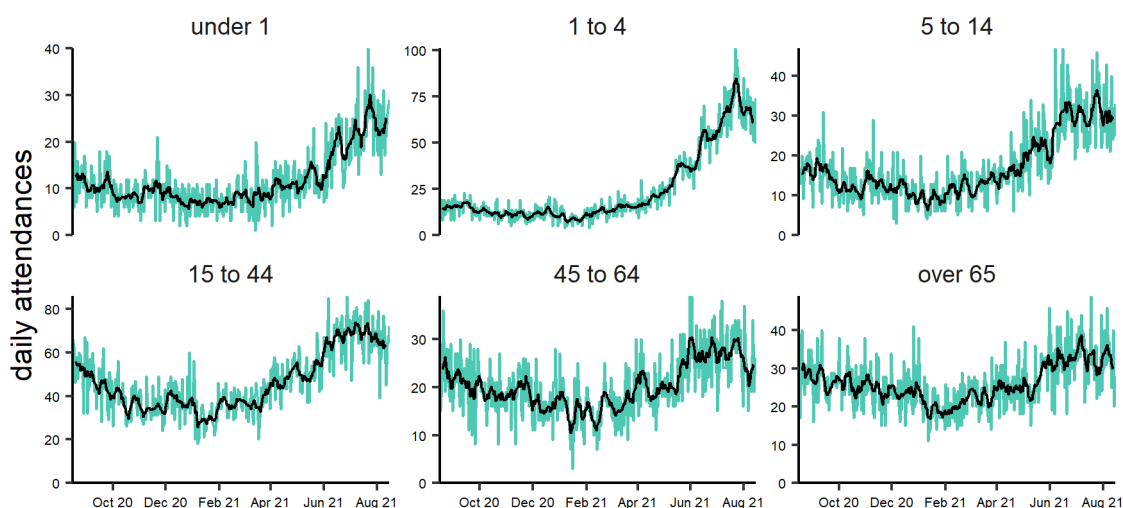
Gastroenteritis 16/08/2020 - 15/08/2021



**11a: Gastroenteritis by age group.**

Daily number and 7 day moving average of attendances within each age group.

Gastroenteritis by age group (years) 16/08/2020 - 15/08/2021

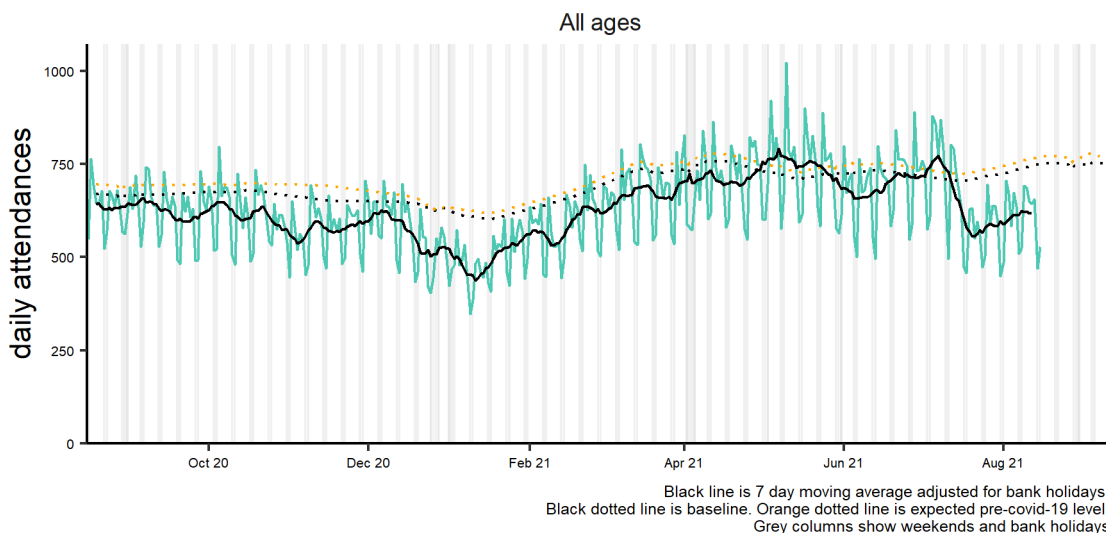


NOTE: SCALES MAY VARY IN EACH GRAPH TO ENABLE TREND COMPARISON. Black line is 7 day moving average adjusted for bank holidays.

**12: Cardiac.**

Daily number of attendances recorded as cardiac attendances across the EDSSS network.

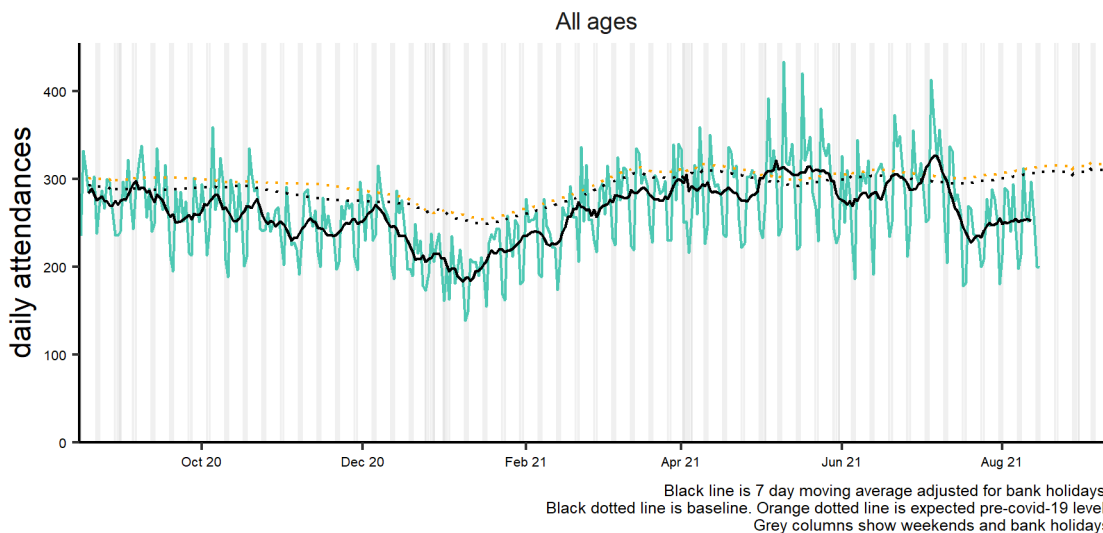
Cardiac conditions 16/08/2020 - 15/08/2021



**13: Myocardial Ischaemia.**

Daily number of attendances recorded as myocardial ischaemia attendances across the EDSSS network.

Myocardial ischaemia 16/08/2020 - 15/08/2021

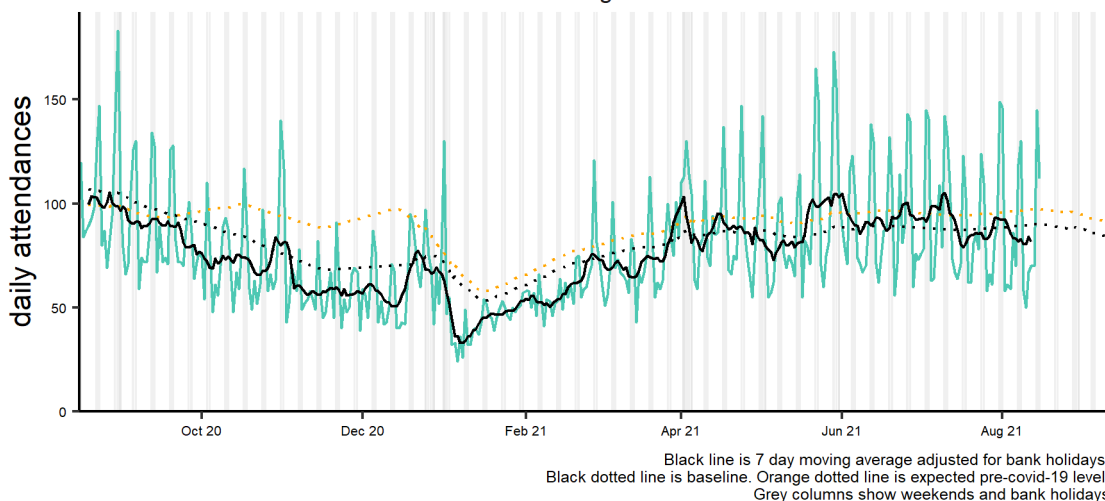


**14. Acute alcohol intoxication**

Daily number of attendances recorded as acute alcohol intoxication across the EDSSS network.

Acute alcohol intoxication 16/08/2020 - 15/08/2021

All ages

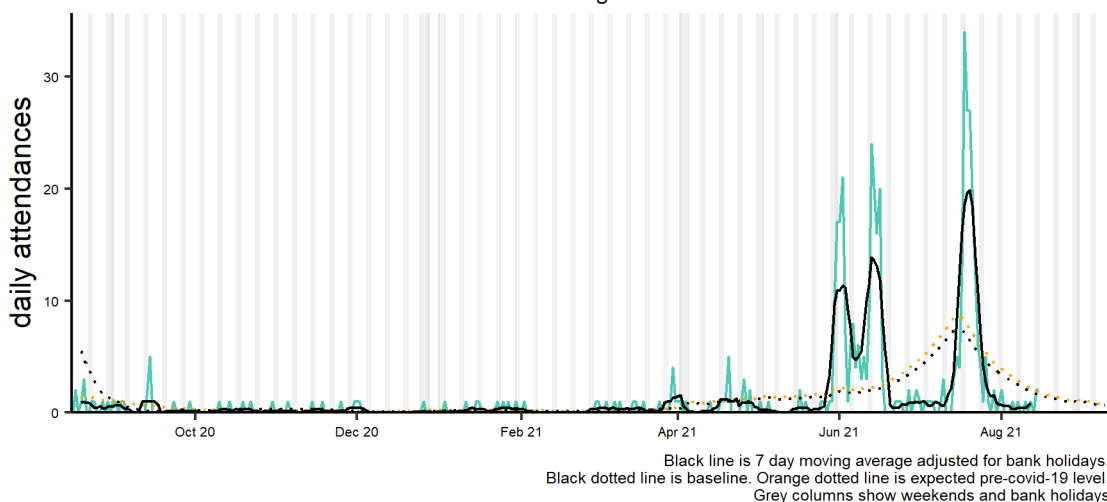


**15. Heat or sunstroke**

Daily number of attendances recorded as heat or sunstroke across the EDSSS network.

Heat or sunstroke 16/08/2020 - 15/08/2021

All ages



**Notes and caveats:**

- ▶ **National EDSSS** began operating in April 2018. Following the introduction of the Emergency Care Data Set (ECDS) the: <https://www.england.nhs.uk/ourwork/tsd/ec-data-set/>
- ▶ EDSSS receives an automated daily transfer of anonymised ED data from NHS Digital
- ▶ **Not all EDs currently provide data through ECDS on a daily basis**
- ▶ EDs are eligible for inclusion in this report only where the EDSSS reporting criteria have been met during the surveillance week reported:
  - Data relates to attendances at a type 1 ED
  - Data for 7 of the 7 most recent days was received by PHE
  - Data for those days was received within 2 calendar days of the patient arrival
- ▶ Where an ED meets these criteria, all data received from that ED previous to the current surveillance week is included. EDs eligible for inclusion is likely to change each week, which will in turn affect the historical data inclusion
- ▶ Individual EDs will not be identified in syndromic surveillance reporting in these bulletins
- ▶ **All EDs report diagnoses to EDSSS using SnomedCT codes**
- ▶ Not all diagnoses are confirmed
- ▶ The syndromic indicators presented in this bulletin are based on the **primary diagnosis of each attendance** as reported by EDs using SnomedCT codes:
  - Respiratory:** All respiratory diseases and conditions (infectious and non infectious).
  - Asthma:** As indicated by title.
  - Acute Respiratory Infections (ARI):** All acute infectious respiratory diseases.
  - Bronchiolitis/ bronchitis:** As indicated by title (excluding 'chronic').
  - Influenza-like Illness (ILI):** As indicated by title.
  - Pneumonia:** As indicated by title.
  - COVID-19-like:** Coronavirus\* or Severe Acute Respiratory Syndrome (SARS).
  - \*Please note: not all EDs have reported a coronavirus diagnosis code.
  - Gastrointestinal:** All gastrointestinal diseases and conditions (infectious and non infectious).
  - Gastroenteritis:** All infectious gastrointestinal diseases.
  - Cardiac:** All cardiac conditions.
  - Myocardial Ischaemia:** All ischaemic heart disease.
  - Acute alcohol intoxication:** As indicated by title (excluding 'chronic')
- ▶ **EDSSS indicators are likely to be an underestimation of number attendances as they are based on primary diagnosis only.**
- ▶ **The EDSSS should therefore be used to monitor trends in ED attendances and not numbers of 'cases'.**
- ▶ Baselines have been remodelled to account for changes due to COVID-19 and the orange dotted lines are counter-factual models showing seasonally expected levels if covid-19 had not occurred. Baselines take into account: the change from sentinel to National EDSSS and coverage (numbers of attendances and the individual type 1 EDs included).
- ▶ - **Sentinel EDSSS** ran from July 2010 to March 2018, collected data through a bespoke, voluntary network of EDs across England and Northern Ireland.

**Acknowledgements:**

---

We are grateful to the clinicians in each ED and other staff within each Trust for their continued involvement in the EDSSS.

We thank the Royal College of Emergency Medicine, NHS Digital and NHS England for their support in the development of national EDSSS, using anonymised data collection from ECDS.

---

**Emergency Department Syndromic Surveillance System Bulletin.**

**Produced by:** PHE Real-time Syndromic Surveillance Team  
1<sup>st</sup> Floor, 5 St Philips Place, Birmingham, B3 2PW

**Tel:** 0344 225 3560 > Option 4 > Option 2 **Email:** [syndromic.surveillance@phe.gov.uk](mailto:syndromic.surveillance@phe.gov.uk)

**Web:** <https://www.gov.uk/government/collections/syndromic-surveillance-systems-and-analyses>