



17 August 2021

Year: 2021

Week: 32

In this issue:

- Key messages.
- Syndromic indicators at a glance.
- Data summary.
- Indicators by syndrome.

NHS 111 telephone calls:

- Cold/flu
- Fever
- Cough
- Loss of taste or smell
- Difficulty breathing
- Sore throat
- Potential COVID-19
- Diarrhoea
- Vomiting
- Eye problems
- Heat/sun impact
- Insect bites

NHS 111 online assessments:

- Cold/flu
- Fever
- Cough
- Loss of taste or smell
- Difficulty breathing
- Potential COVID-19
- Introduction to charts and caveats.
- Notes and further information.
- Acknowledgements.

Key messages

Data to: 16 August 2021

During week 32, respiratory and gastroenteritis related indicators remained stable but above baseline for this time of year.

Baselines have been remodelled to account for changes due to COVID-19 and additional, new modelled lines have been added to the charts to represent expected levels if COVID-19 had not occurred.

Please note: due to technical issues, syndromic call numbers for the North West are currently incomplete and should be treated with caution. Please see [notes and caveats](#) section for more information about the 'potential COVID-19' and standard NHS 111 syndromic indicators.

A Heat-Health Watch system operates in England from 1 June to 15 September each year. As part of the Heatwave Plan for England, the PHE Real-time Syndromic Surveillance team will be routinely monitoring the public health impact of hot weather using syndromic surveillance data. <http://www.metoffice.gov.uk/weather/uk/heathealth/>
Heat-health watch level (current reporting week): **Level 1: Summer preparedness**

Syndromic indicators at a glance:

Indicator	Trend*	Level
Cold/flu calls	no trend	above baseline levels
Fever calls	increasing	above baseline levels
Cough calls	no trend	above baseline levels
Loss of taste or smell calls	decreasing	*
Difficulty breathing calls	no trend	above baseline levels
Sore throat calls	increasing	above baseline levels
Potential COVID-19' calls	no trend	*
Diarrhoea calls	no trend	above baseline levels
Vomiting calls	no trend	above baseline levels
Eye problems calls	decreasing	above baseline levels
Heat exposure or sunburn calls	no trend	below baseline levels
Cold/flu online assessments	no trend	above baseline levels
Fever online assessments	no trend	below baseline levels
Cough online assessments	no trend	above baseline levels
Loss of taste or smell online assessments	no trend	*
Difficulty breathing online assessments	no trend	similar to baseline levels
'Potential COVID-19' online assessments	no trend	*
Heat exposure or sunburn online assessments	no trend	*

Data summary

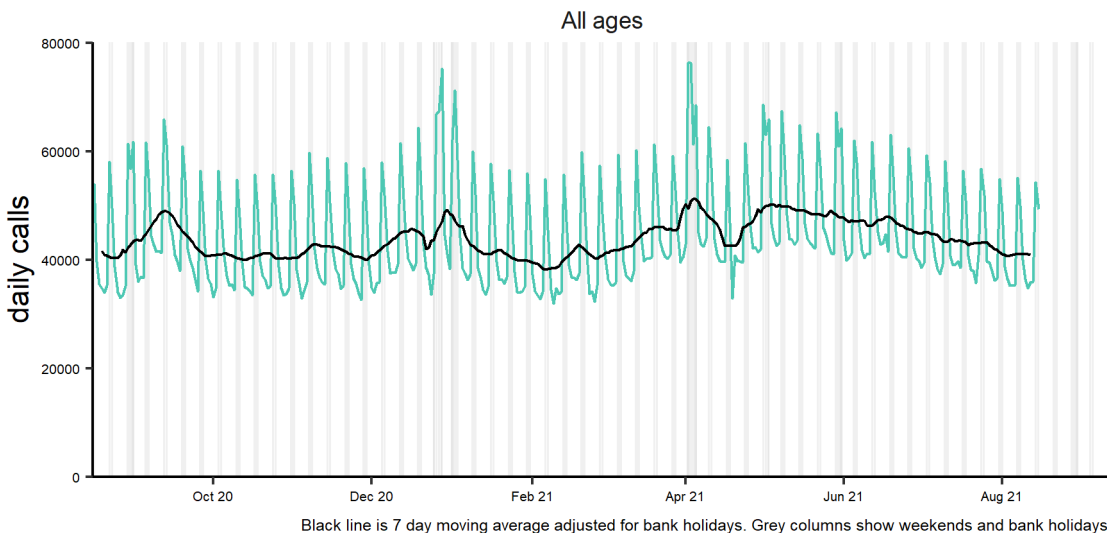
* Indicators where there are no historical data to allow assessment of 'level' compared to baseline

Year	Week	Total calls	Total online assessments
2021	32	311,482	143,115

1. Total NHS 111 calls

The total number of syndromic calls recorded each day by NHS 111.

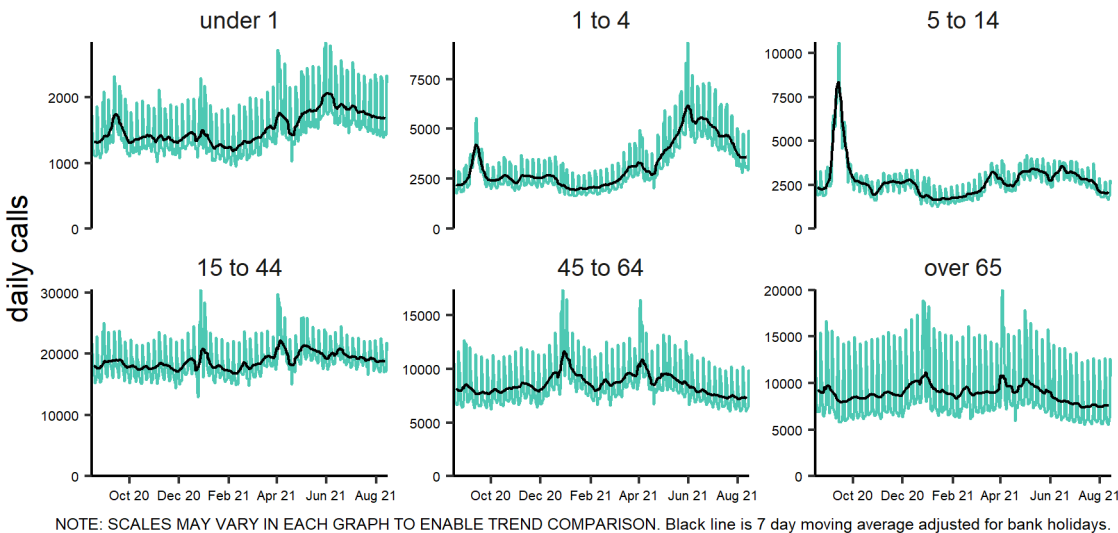
Total calls 16/08/2020 - 15/08/2021



1a: Total calls by age group.

Daily number of calls within each age group, with 7-day moving average*.

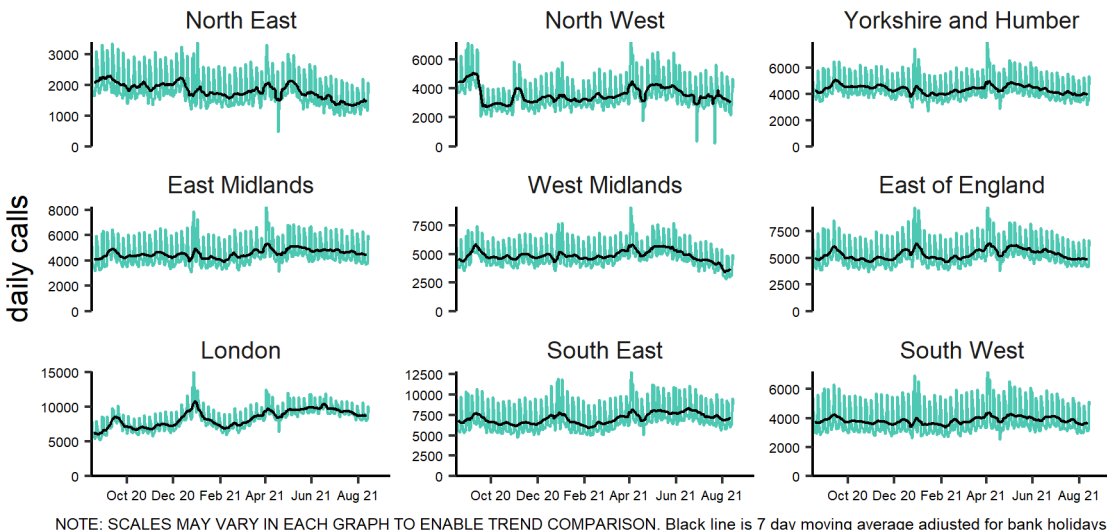
Total calls by age group (years) 16/08/2020 - 15/08/2021



1ba: Total calls by PHE centre.

Daily number of calls within each PHE Centre, with 7-day moving average*.

Total calls by PHE centre 16/08/2020 - 15/08/2021



*7-day moving average adjusted for bank holidays.

17 August 2021

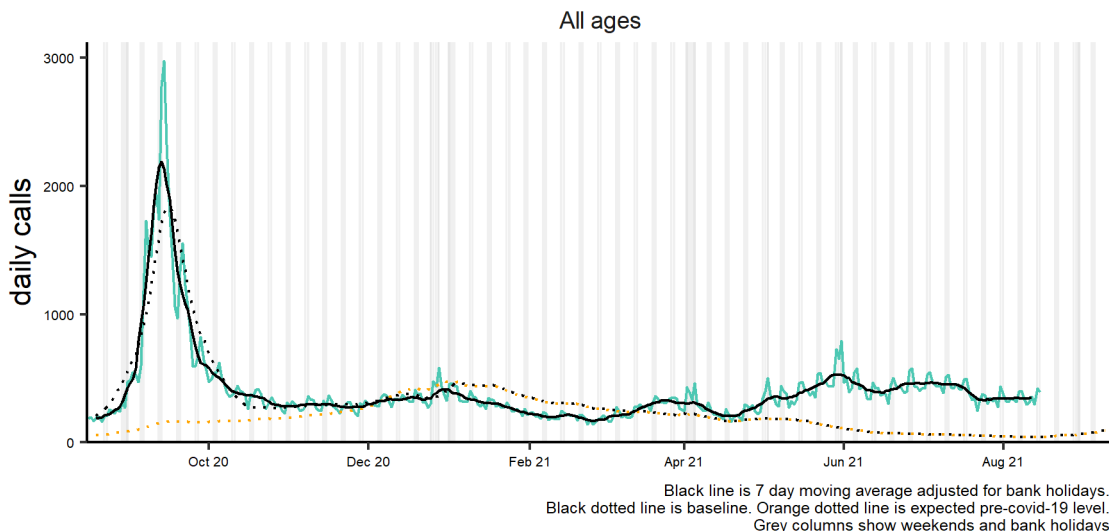
Year: 2021

Week: 32

1. Cold/flu calls

Daily number of 'cold/flu' calls, with 7-day moving average*. Baselines are constructed from historical data since 2013.

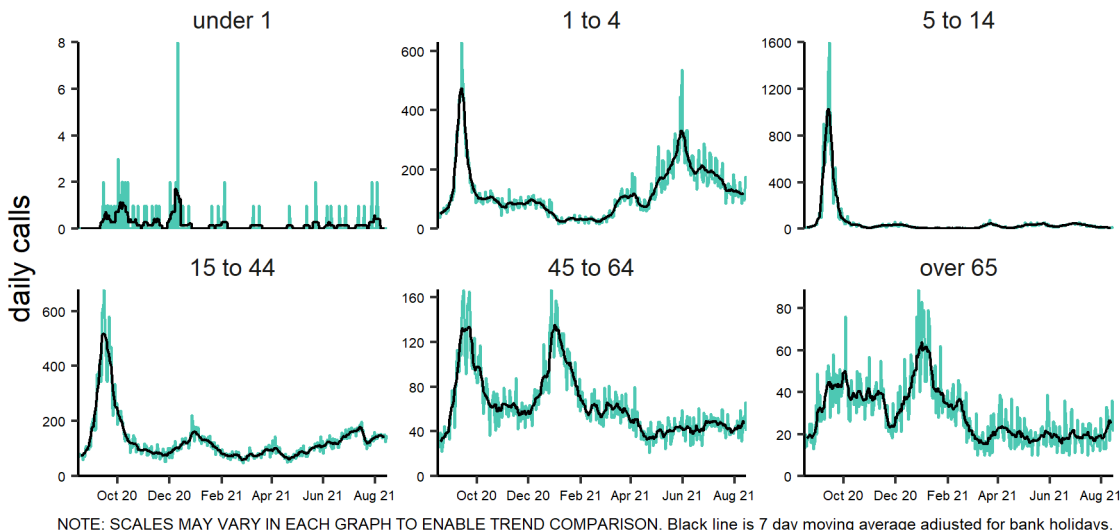
Cold or flu 16/08/2020 - 15/08/2021



2a: Cold/flu calls by age group

Daily number of 'cold/flu' calls, with 7-day moving average*. Baselines are constructed from historical data since 2013.

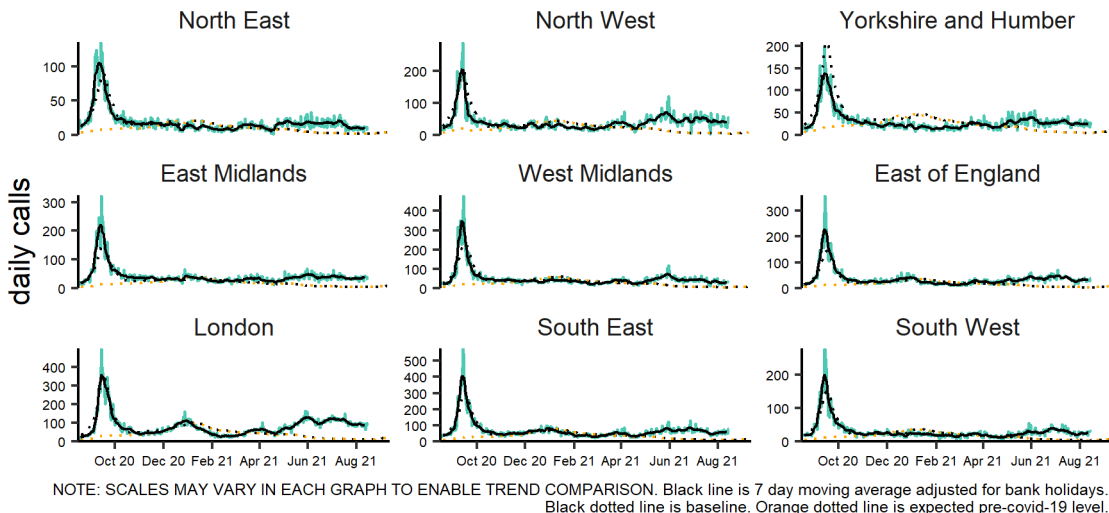
Cold or flu by age group (years) 16/08/2020 - 15/08/2021



2b: Cold/flu by PHE centre

Daily number of 'cold/flu' calls within each PHE centre, with 7-day moving average*.

Cold or flu by PHE centre 16/08/2020 - 15/08/2021

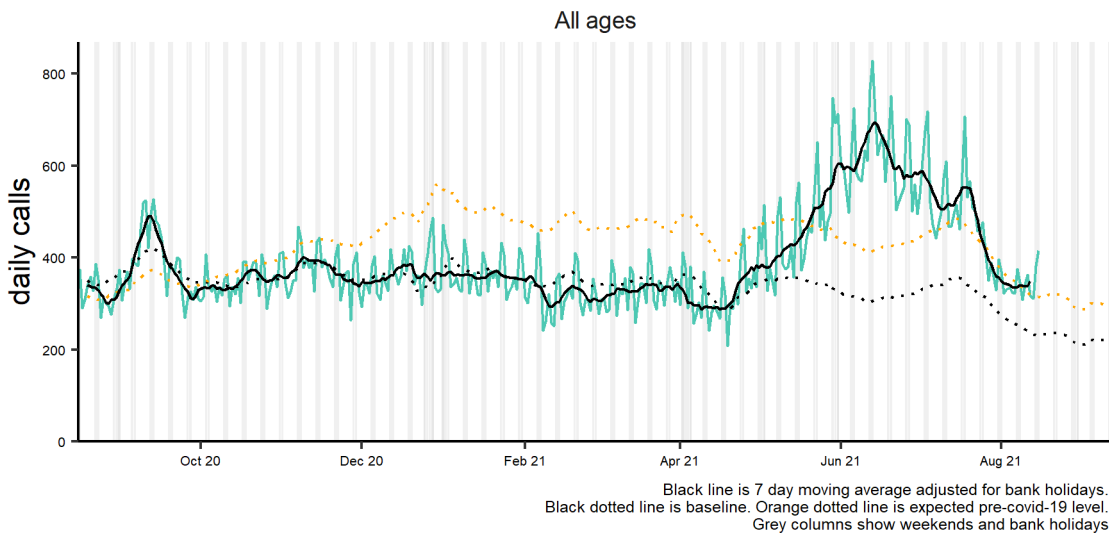


*7-day moving average adjusted for bank holidays.

3: Fever

Daily number of 'fever' calls, with 7-day moving average*. Baselines are constructed from historical data since 2013.

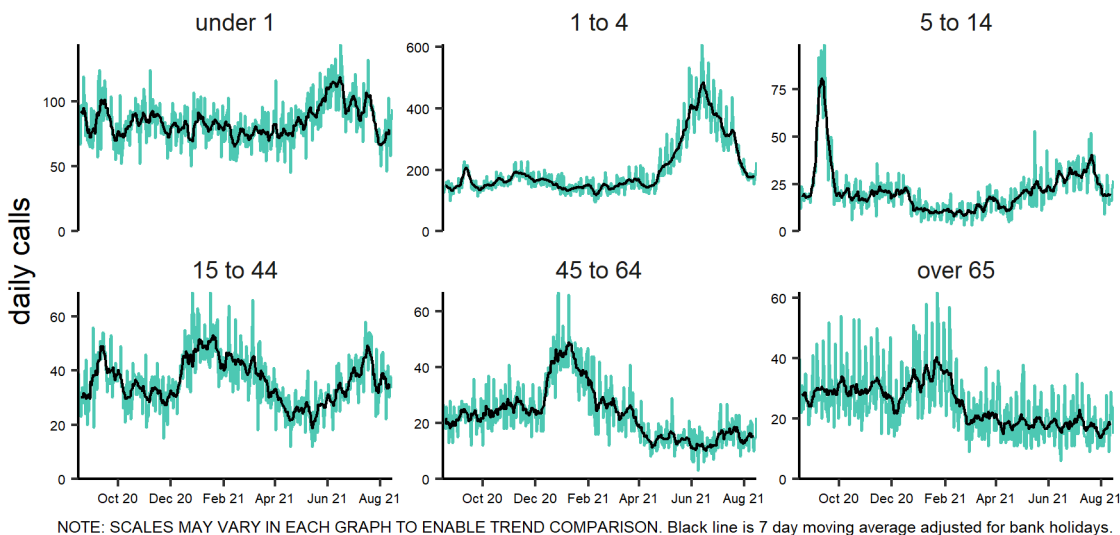
Fever 16/08/2020 - 15/08/2021



3a: Fever calls by age group

Daily number of 'fever' calls within each age group, with 7-day moving average*.

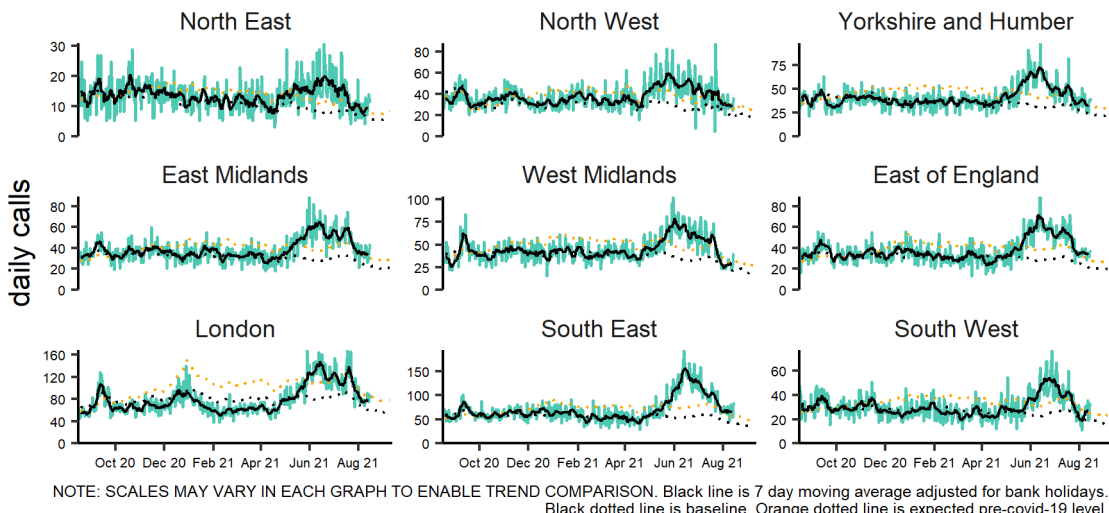
Fever by age group (years) 16/08/2020 - 15/08/2021



3b. Fever calls by PHE centre

Daily number of calls, by PHE centre with 7-day moving average*. Baselines are constructed from historical data since 2013.

Fever by PHE centre 16/08/2020 - 15/08/2021



*7-day moving average adjusted for bank holidays.

17 August 2021

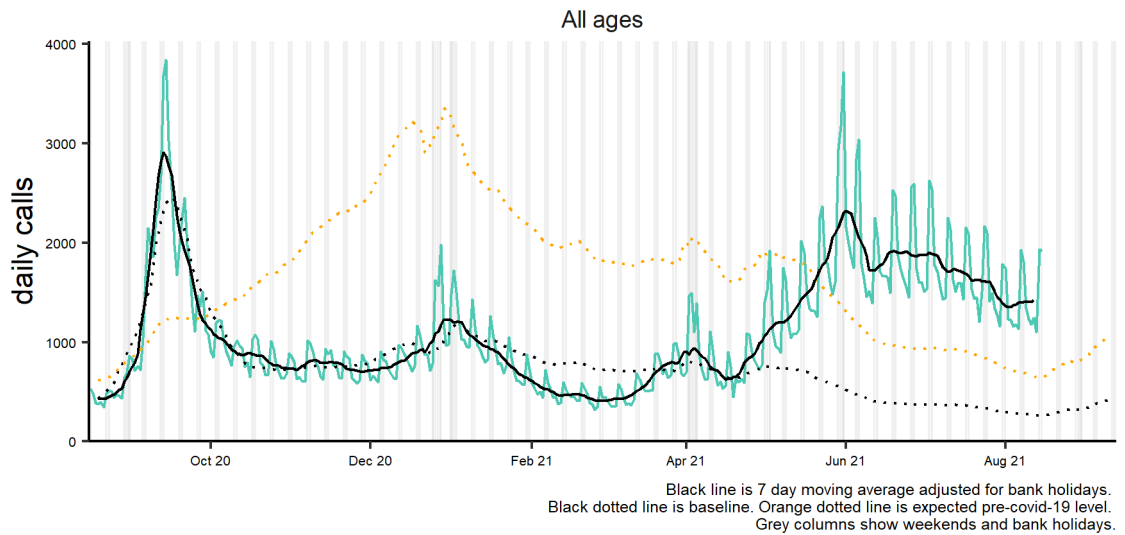
Year: 2021

Week: 32

4: Cough

Daily number of 'cough' calls, with 7-day moving average*. Baselines are constructed from historical data since 2013.

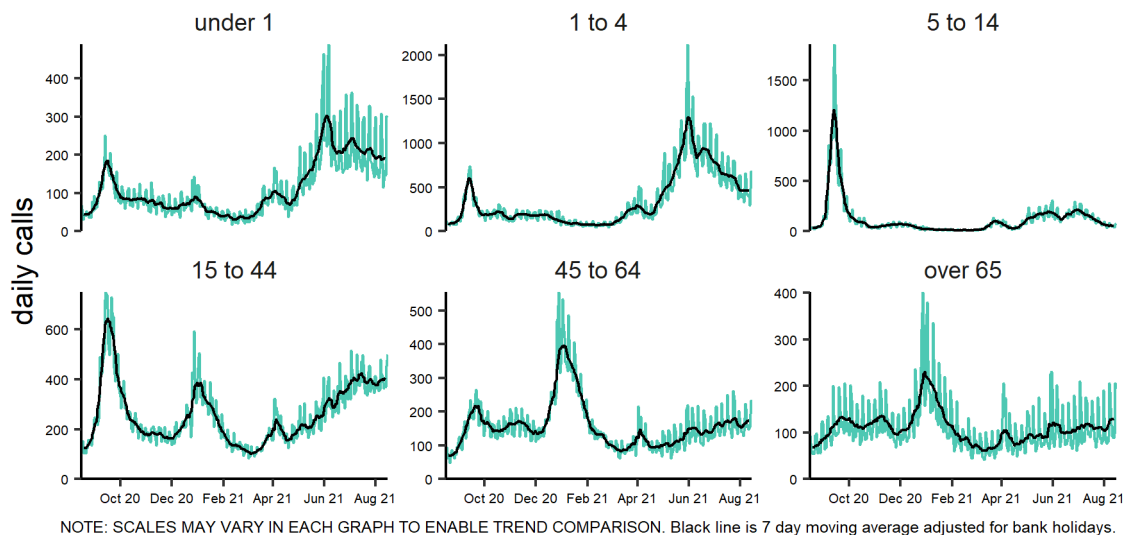
Cough 16/08/2020 - 15/08/2021



4a: Cough calls by age group

Daily number of 'cough' calls within each age group, with 7-day moving average*.

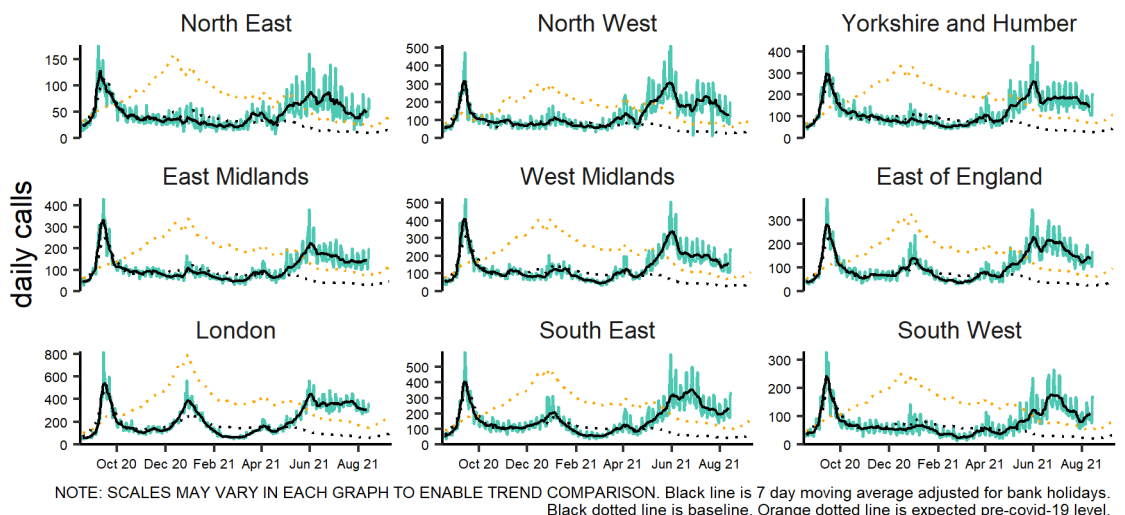
Cough by age group (years) 16/08/2020 - 15/08/2021



4b: Cough calls by PHE centre

Daily number of 'cough' calls by PHE centre, with 7-day moving average*. Baselines are constructed from historical data since 2013.

Cough by PHE centre 16/08/2020 - 15/08/2021



*7-day moving average adjusted for bank holidays.

17 August 2021

Year: 2021

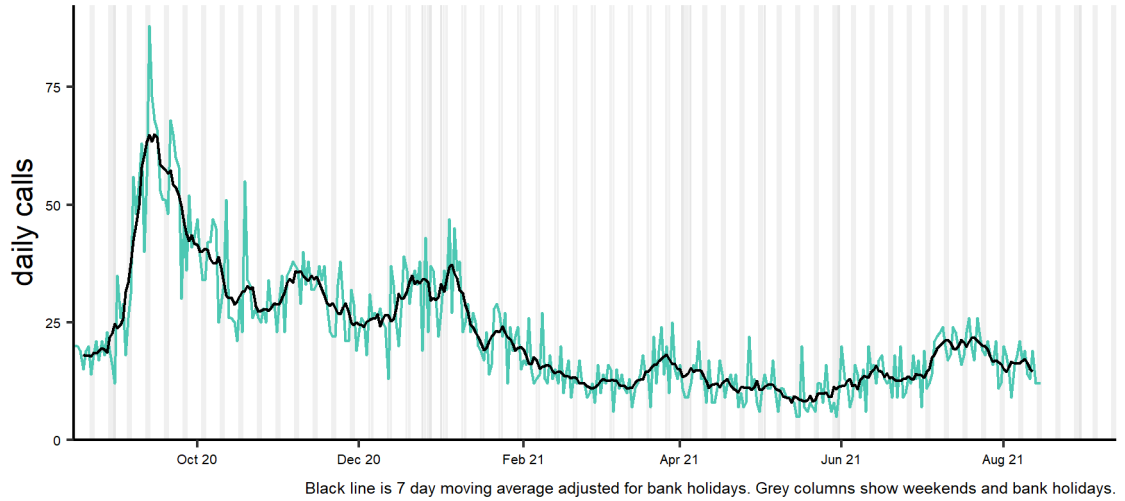
Week: 32

5: Loss of taste or smell

Daily number of 'loss of taste or smell' calls, with 7-day moving average*.

Loss of taste or smell 16/08/2020 - 15/08/2021

All ages



Intentionally left blank

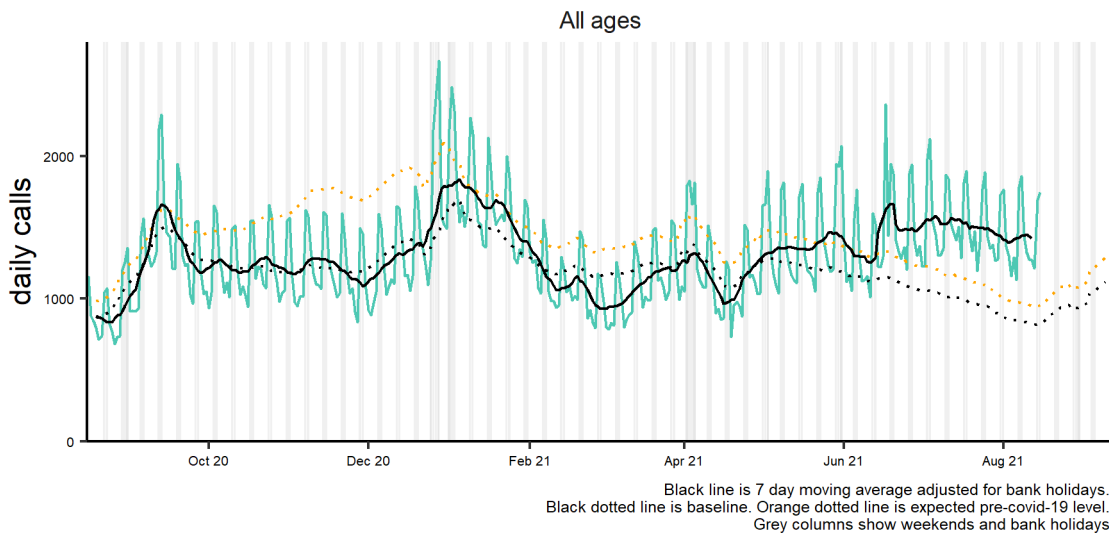
Intentionally left blank

*7-day moving average adjusted for bank holidays.

6: Difficulty breathing

Daily number of 'difficulty breathing' calls, with 7-day moving average*. Baselines are constructed from historical data since 2013.

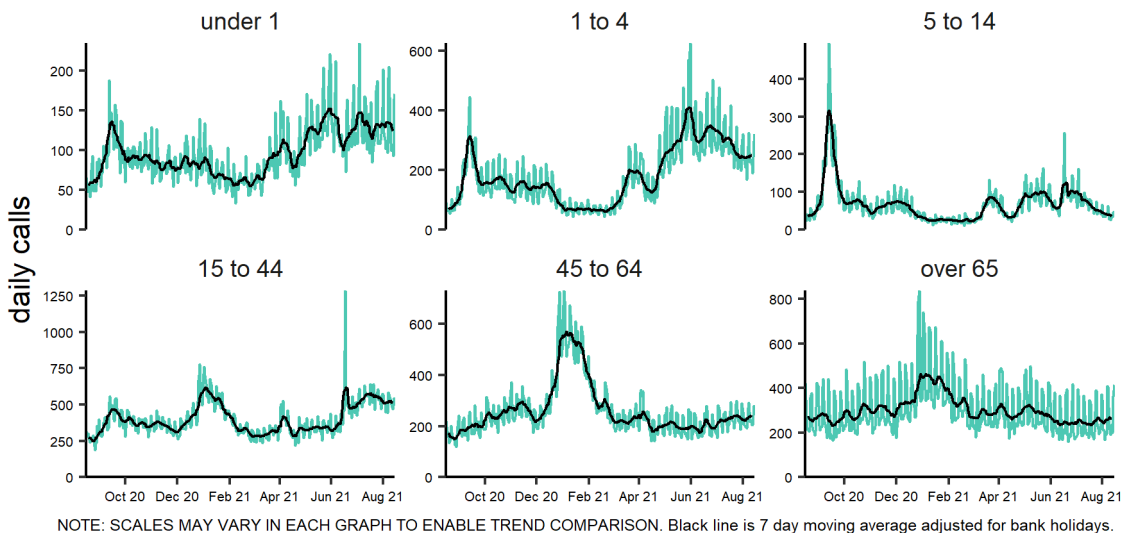
Difficulty breathing 16/08/2020 - 15/08/2021



6a: Difficulty breathing calls by age group

Daily number of 'difficulty breathing' calls within each age group, with 7-day moving average*.

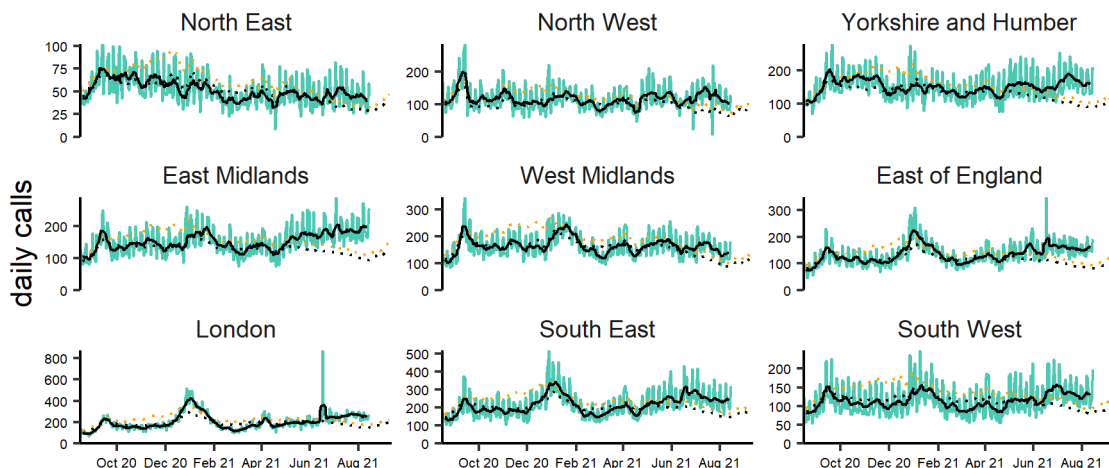
Difficulty breathing by age group (years) 16/08/2020 - 15/08/2021



6b: Difficulty breathing calls by PHE centre

Daily number of 'difficulty breathing' calls within each PHE centre, with 7-day moving average*.

Difficulty breathing by PHE centre 16/08/2020 - 15/08/2021

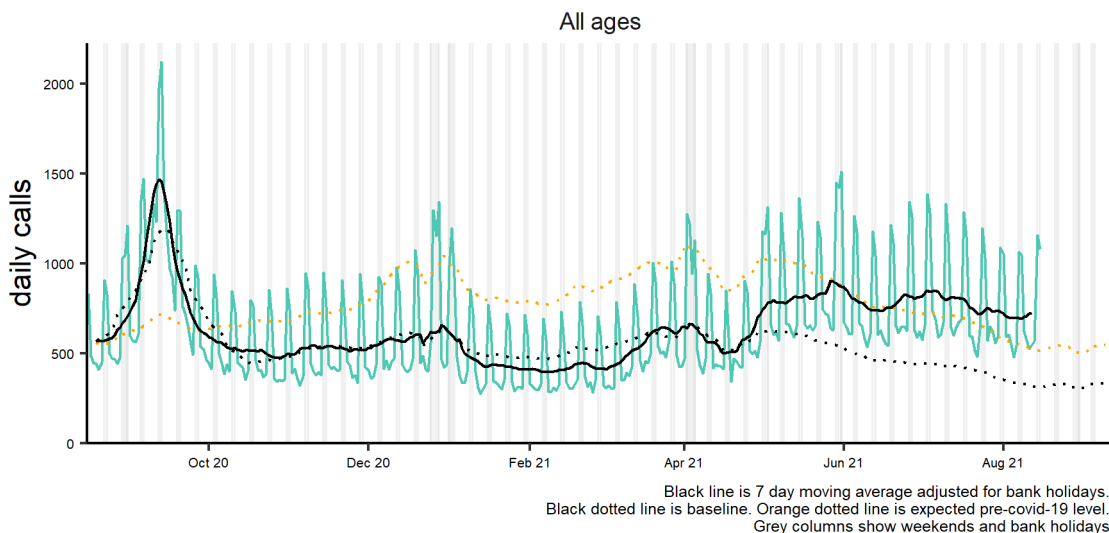


*7-day moving average adjusted for bank holidays.

7: Sore throat

Daily number of 'sore throat' calls, with 7-day moving average*. Baselines are constructed from historical data since 2013.

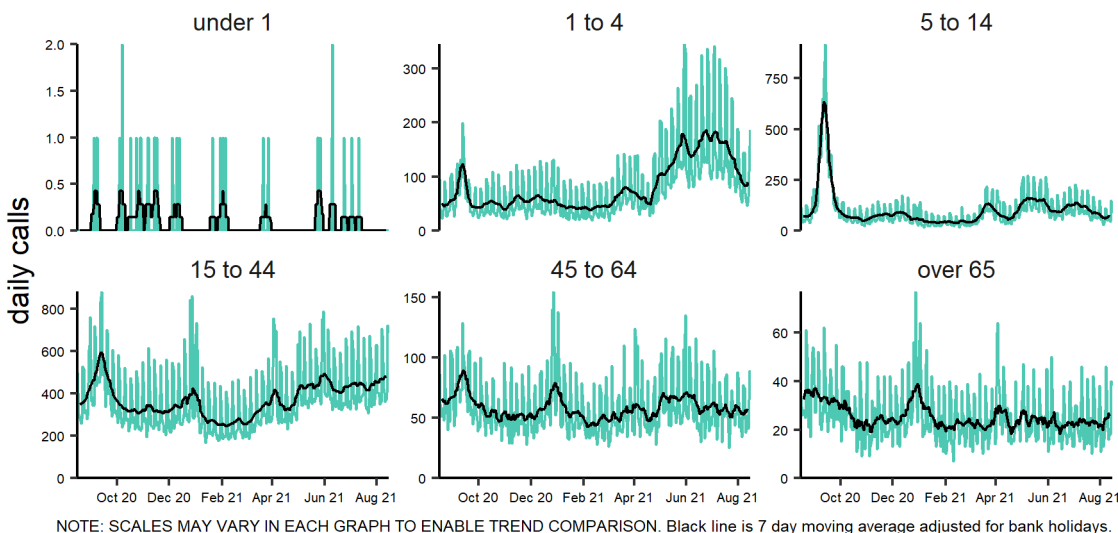
Sore throat 16/08/2020 - 15/08/2021



7a: Sore throat calls by age group

Daily number of sore throat calls within each age group, with 7-day moving average*.

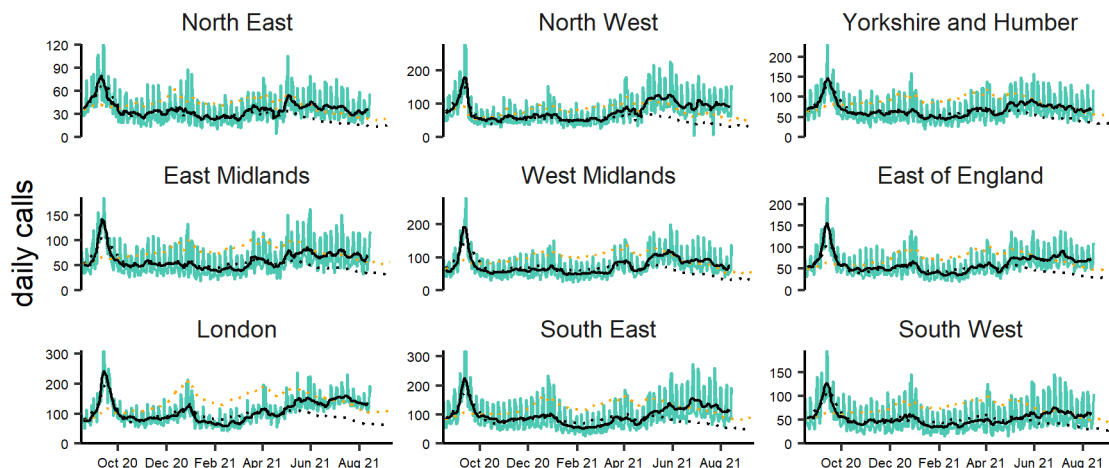
Sore throat by age group (years) 16/08/2020 - 15/08/2021



7b: Sore throat calls by PHE centre

Daily number of 'difficulty breathing' calls within each PHE centre, with 7-day moving average*.

Sore throat by PHE centre 16/08/2020 - 15/08/2021



*7-day moving average adjusted for bank holidays.

17 August 2021

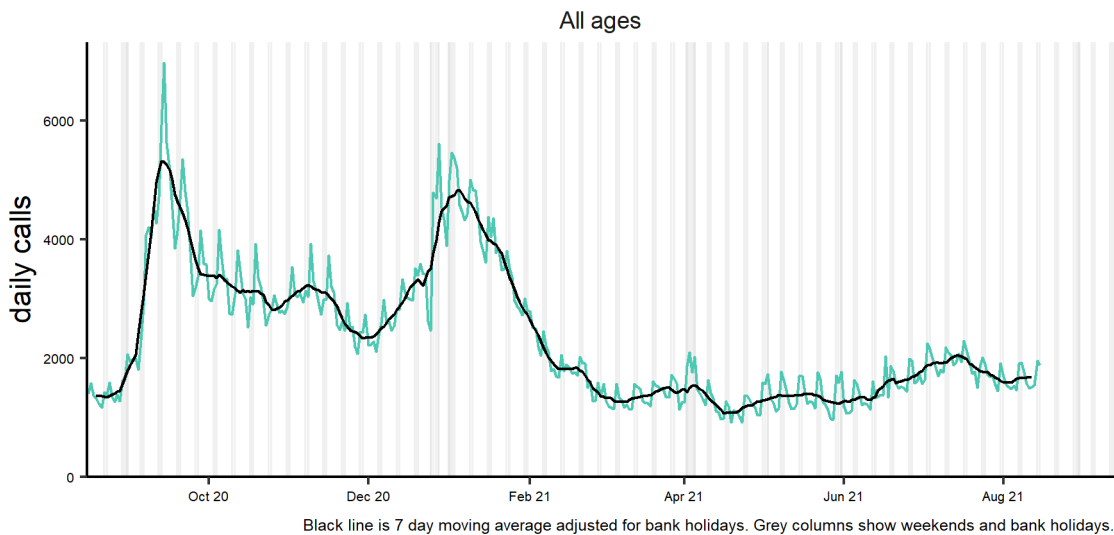
Year: 2021

Week: 32

8: 'Potential COVID-19' calls

Daily number of 'potential COVID-19' calls, with 7-day moving average*.

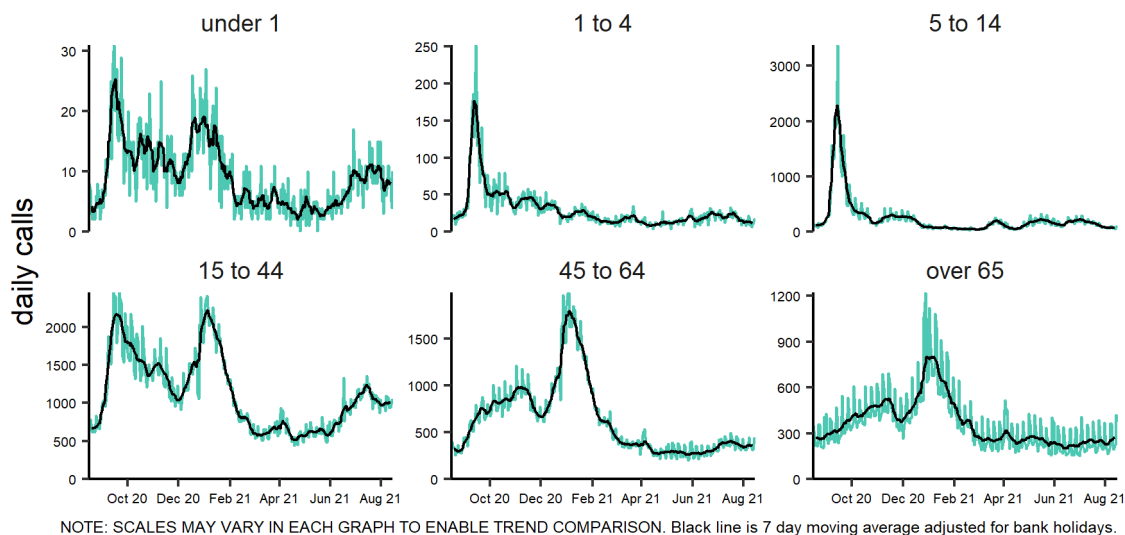
Potential covid-19 16/08/2020 - 15/08/2021



8a: 'Potential COVID-19' calls by age group

Daily number of 'potential COVID-19' calls by age group, with 7-day moving average*.

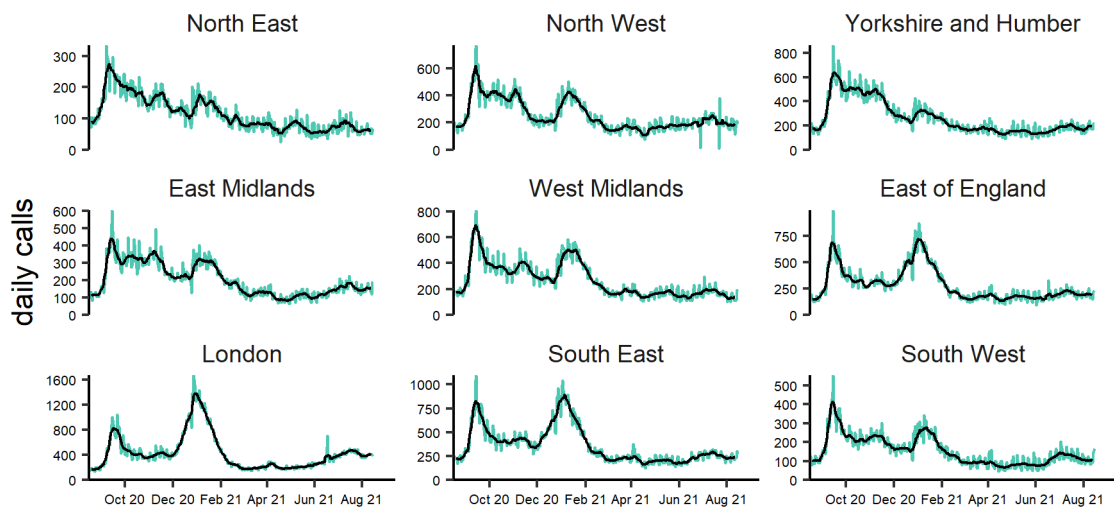
Potential covid-19 by age group (years) 16/08/2020 - 15/08/2021



8b: 'Potential COVID-19' calls by PHE Centre

Daily number of 'potential COVID-19' calls by PHE Centre, with 7-day moving average*.

Potential covid-19 by PHE centre 16/08/2020 - 15/08/2021



*7-day moving average adjusted for bank holidays.

17 August 2021

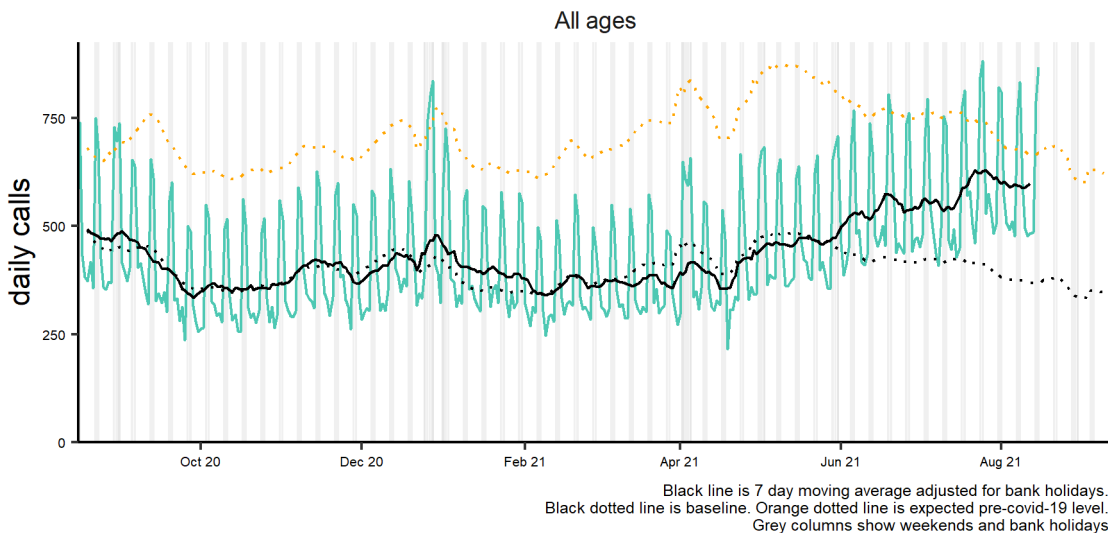
Year: 2021

Week: 32

9. Diarrhoea

Daily number of 'diarrhoea' calls, with 7-day moving average*. Baselines are constructed from historical data since 2013.

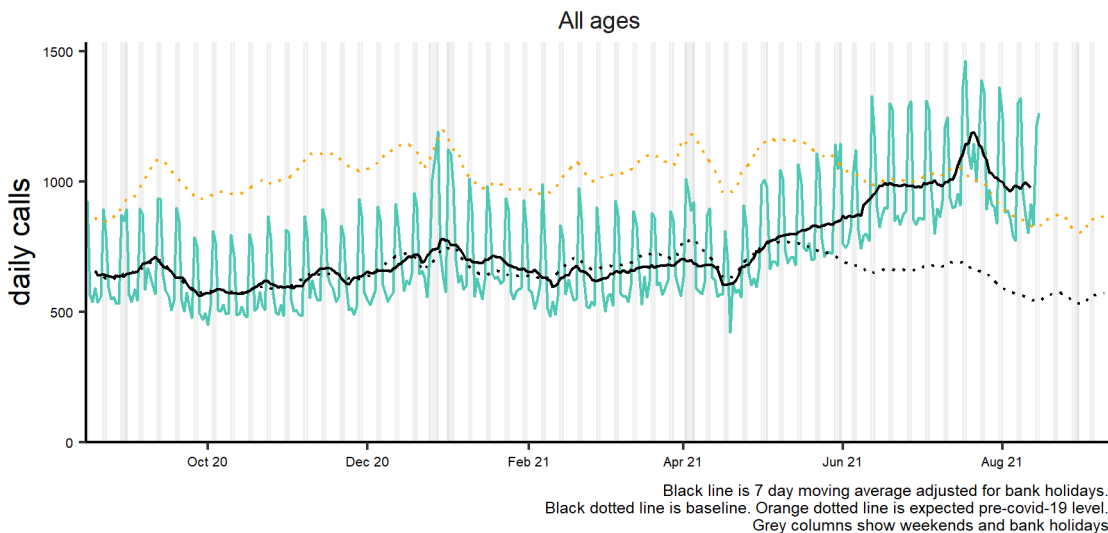
Diarrhoea 16/08/2020 - 15/08/2021



10: Vomiting calls

Daily number of 'vomiting' calls, with 7-day moving average*. Baselines are constructed from historical data since 2013.

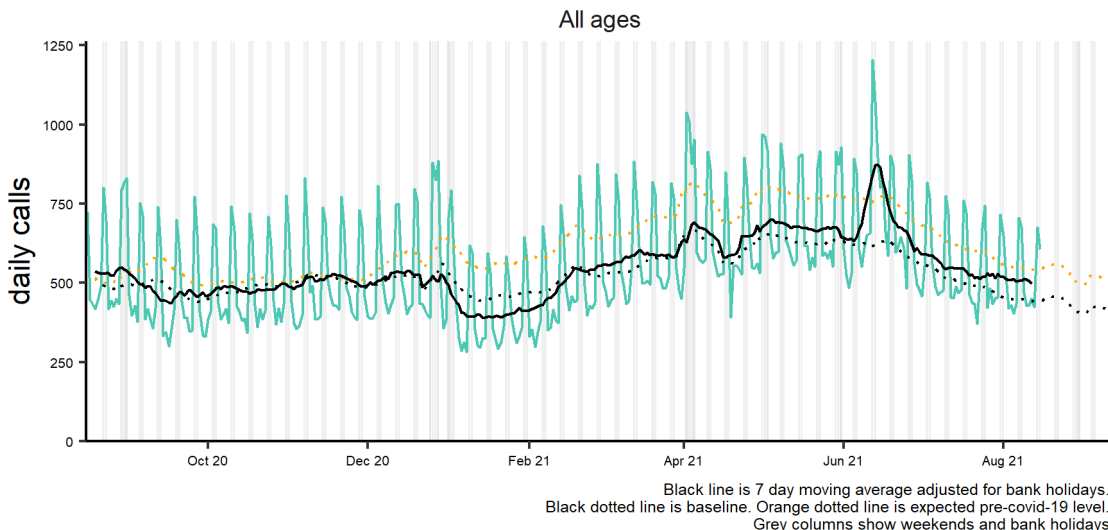
Vomiting 16/08/2020 - 15/08/2021



11: Eye problems

Daily number of 'eye problems' calls, with 7-day moving average*. Baselines are constructed from historical data since 2013.

Eye problems 16/08/2020 - 15/08/2021



*7-day moving average adjusted for bank holidays.

17 August 2021

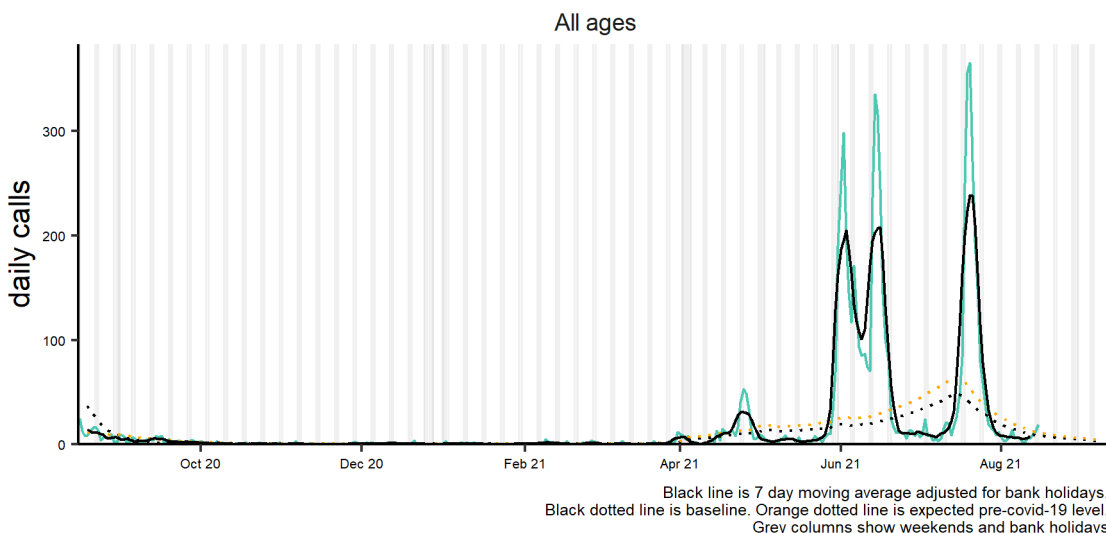
Year: 2021

Week: 32

12. Heat exposure or sunburn

Daily number of 'heat exposure or sunburn' calls, with 7-day moving average*. Baselines are constructed from historical data since 2013.

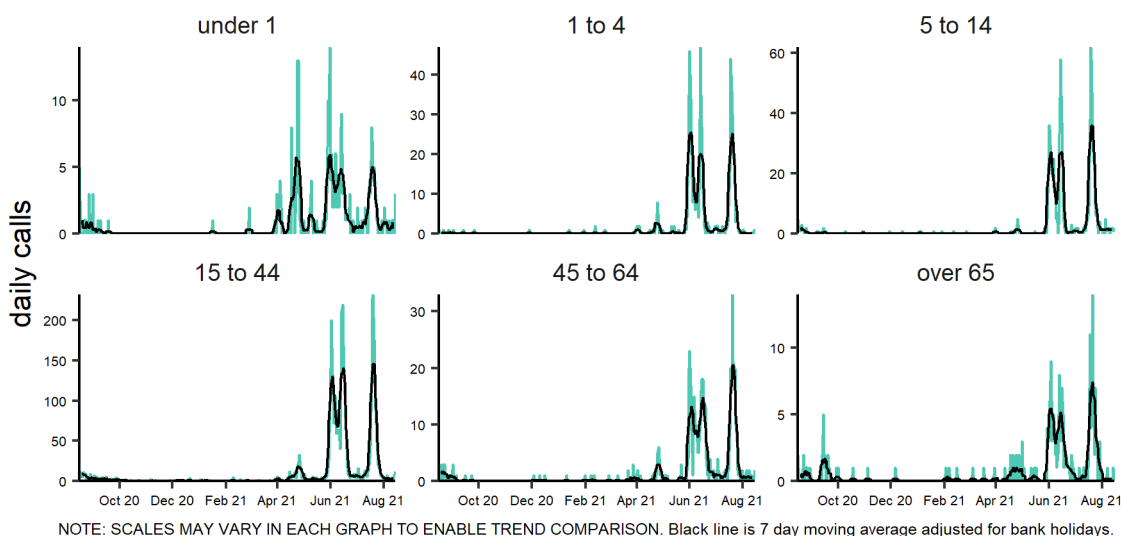
Heat exposure or sunburn 16/08/2020 - 15/08/2021



12a: Heat exposure or sunburn by age group

Daily number of 'heat exposure or sunburn' calls within each age group, with 7-day moving average*.

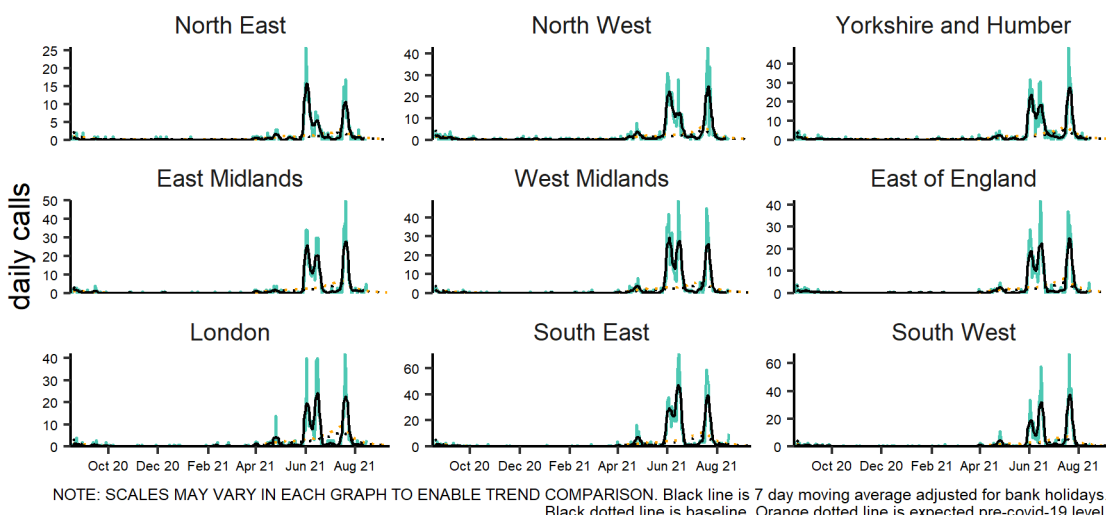
Heat exposure or sunburn by age group (years) 16/08/2020 - 15/08/2021



12b: Heat exposure or sunburn by PHE Centre

Daily number of 'heat exposure or sunburn' calls within each PHE centre, with 7-day moving average*.

Heat exposure or sunburn by PHE centre 16/08/2020 - 15/08/2021



*7-day moving average adjusted for bank holidays.

17 August 2021

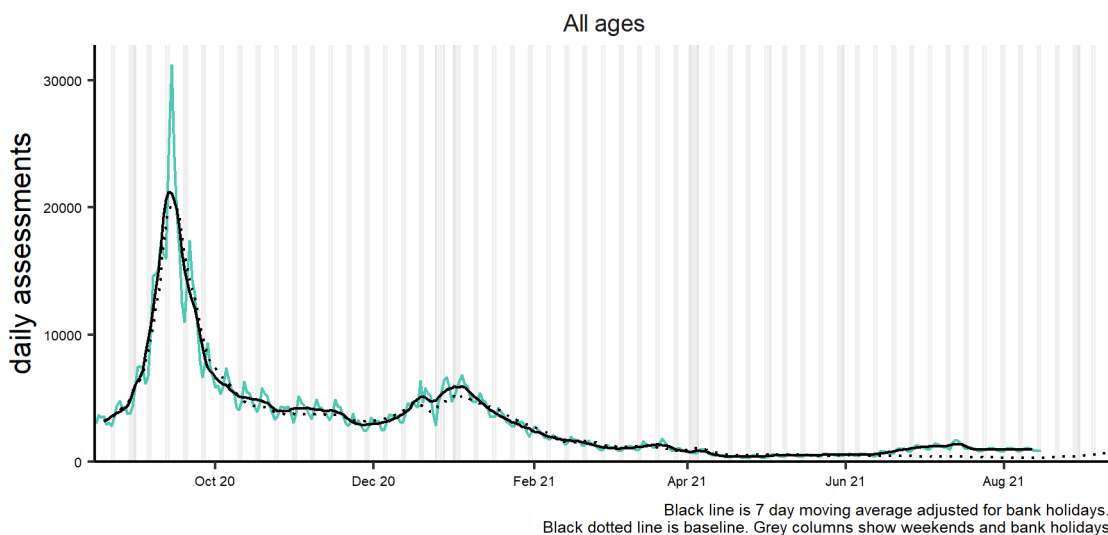
Year: 2021

Week: 32

13: NHS 111 online cold/flu

Number of 'cold/flu' online completed assessments, with 7-day moving average*.

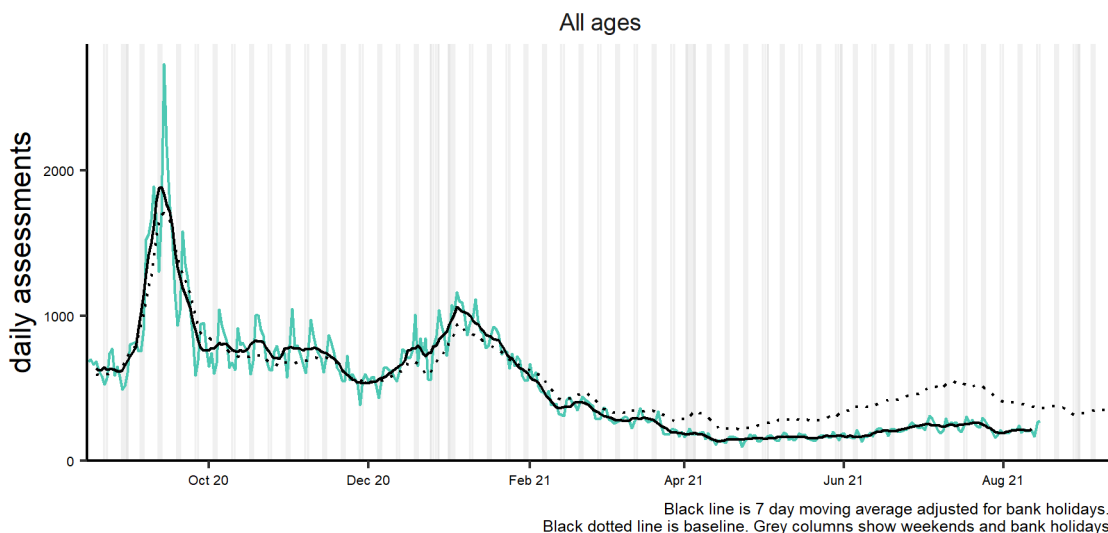
Cold or flu 16/08/2020 - 15/08/2021



14: NHS 111 online fever

Number of 'fever' online completed assessments, with 7-day moving average*.

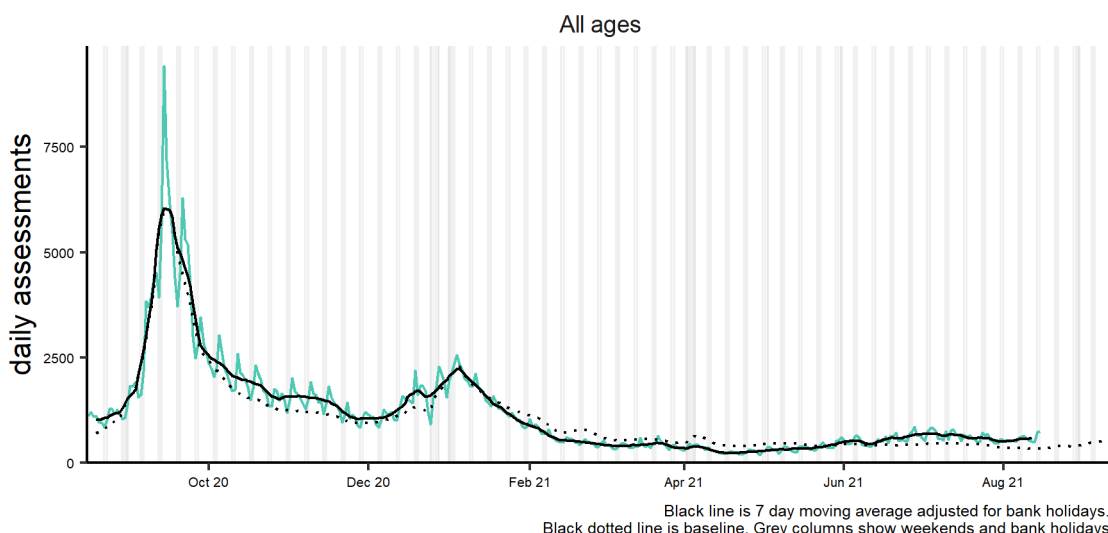
Fever 16/08/2020 - 15/08/2021



15: NHS 111 online cough

Number of 'cough' online completed assessments, with 7-day moving average*.

Cough 16/08/2020 - 15/08/2021



*7-day moving average adjusted for bank holidays.

17 August 2021

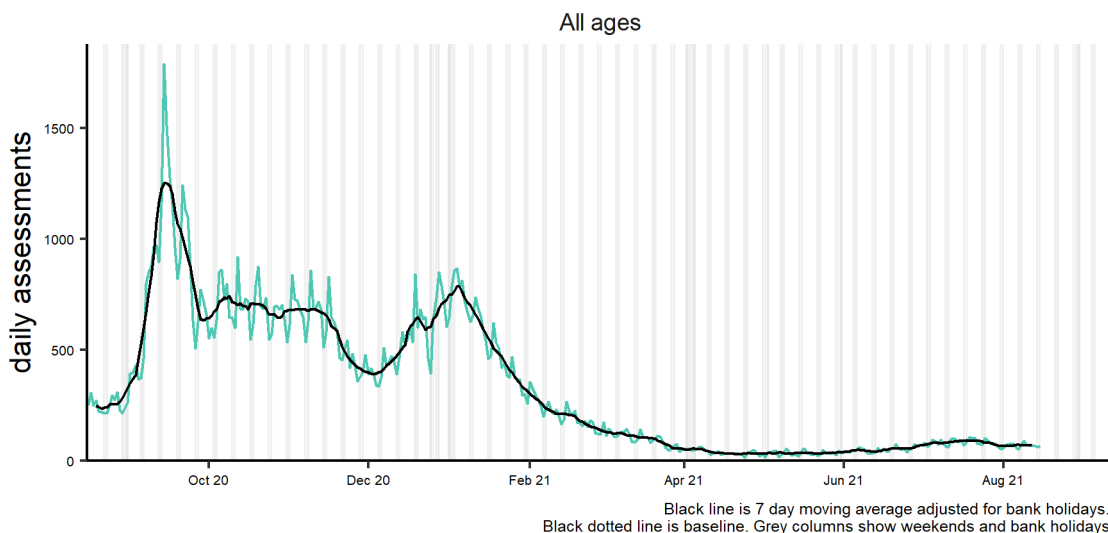
Year: 2021

Week: 32

16: NHS 111 online loss of taste or smell

Number of 'loss of taste or smell' online completed assessments, with 7-day moving average*.

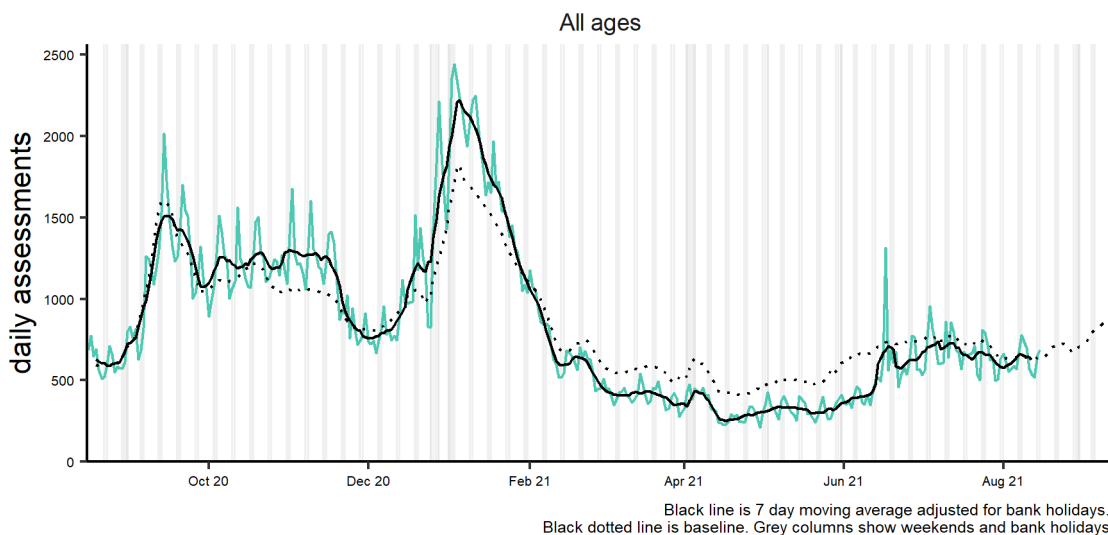
Loss of taste or smell 16/08/2020 - 15/08/2021



17: NHS 111 online difficulty breathing

Number of 'difficulty breathing' online completed assessments, with 7-day moving average*.

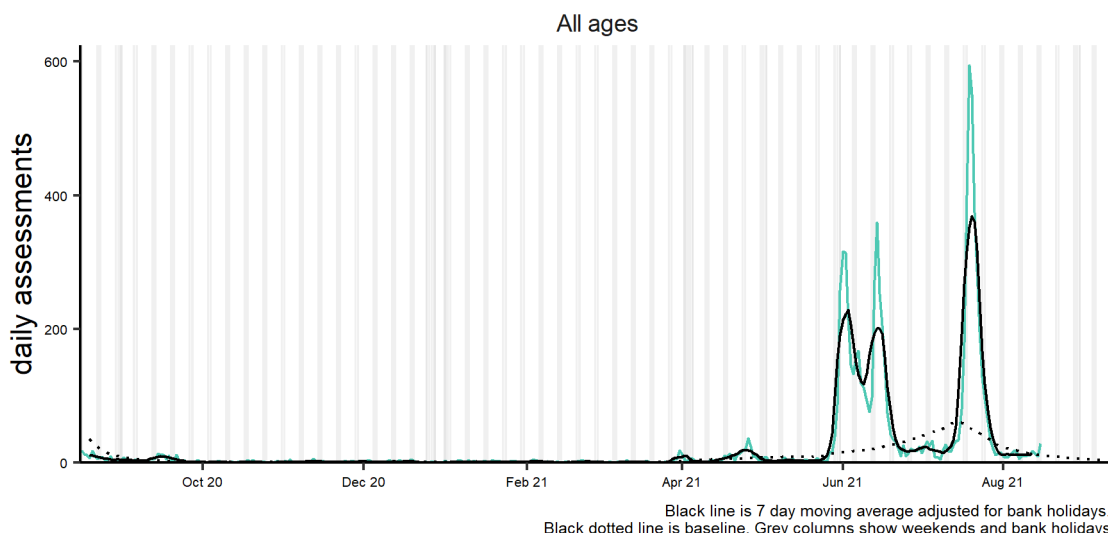
Difficulty breathing 16/08/2020 - 15/08/2021



18: NHS 111 online heat exposure or sunburn

Number of 'heat exposure or sunburn' online completed assessments, with 7-day moving average*.

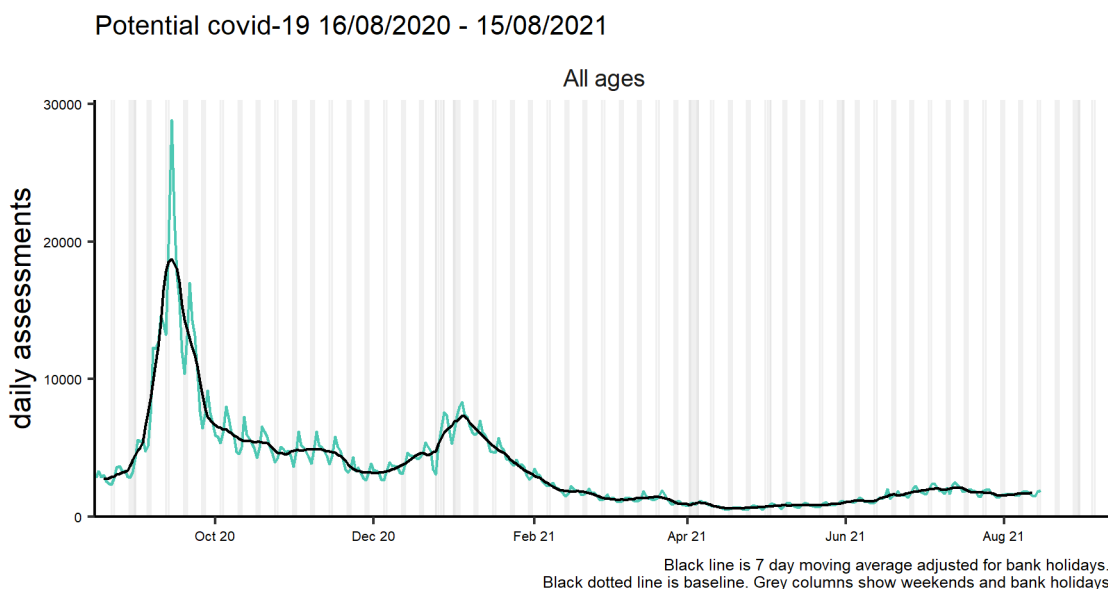
Heat exposure or sunburn 16/08/2020 - 15/08/2021



*7-day moving average adjusted for bank holidays.

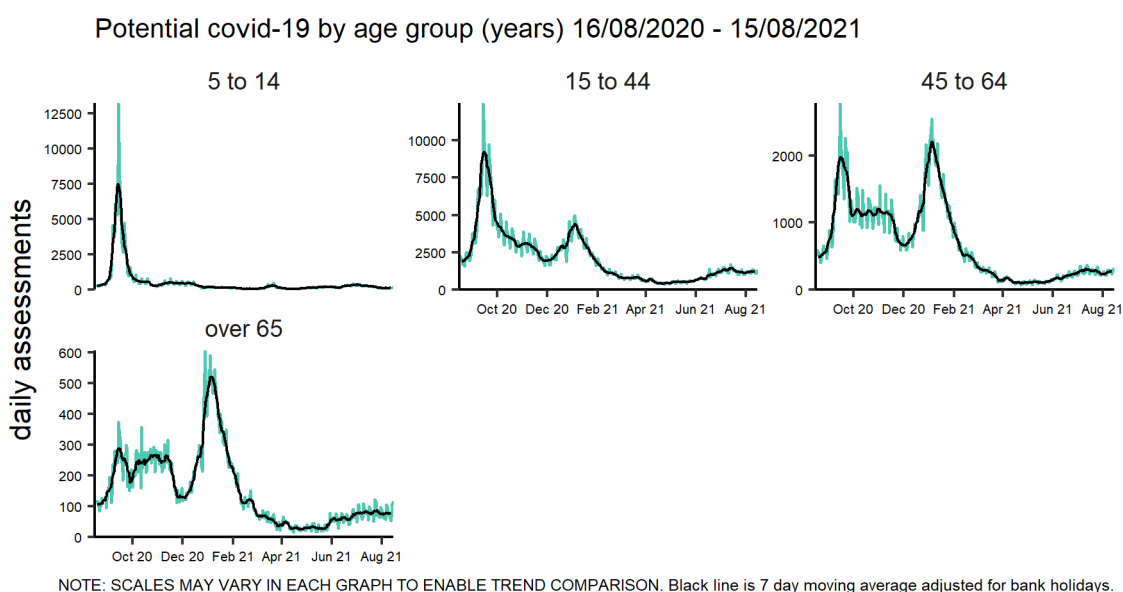
19: 'Potential COVID-19' completed online assessments

Number of completed NHS 111 online assessments which have a 'potential COVID-19' final disposition (and 7-day moving average*).



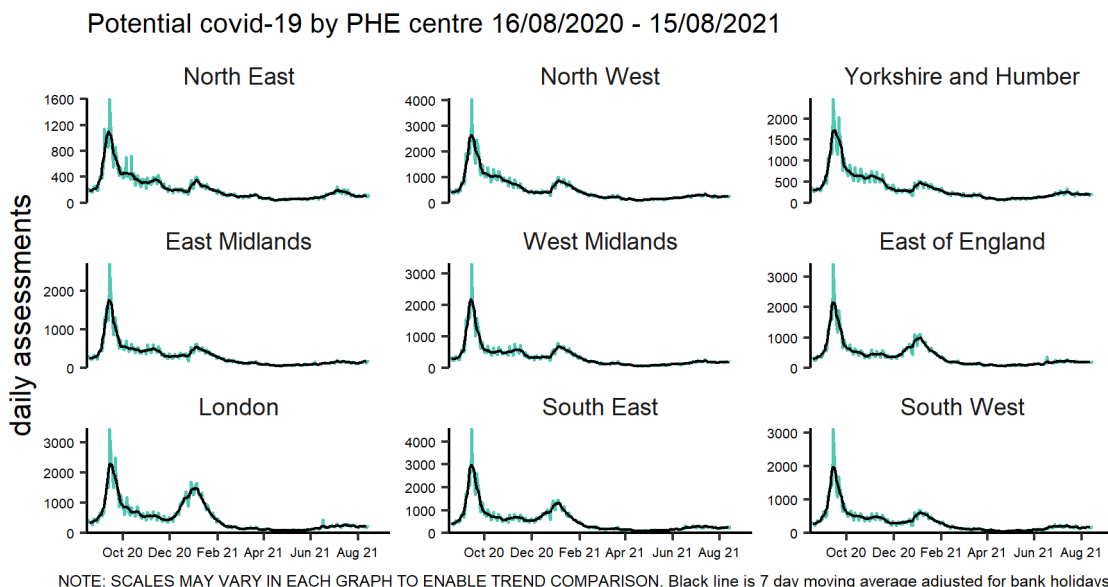
19a: 'Potential COVID-19' completed online assessments by age group

Number of completed NHS 111 online assessments which have a 'potential COVID-19' final disposition, by age group (as a percentage of total assessments within each age group) for ages 15 years and over, shown as a 7-day moving average*.



19b: 'Potential COVID-19' completed online assessments by PHE Centre

Number of completed NHS 111 online assessments which have a 'potential COVID-19' final disposition, by PHE Centre (as a percentage of total assessments within each PHEC, shown as a 7-day moving average*).



*7-day moving average adjusted for bank holidays.

Introduction to charts and caveats:

COVID-19 syndromic surveillance data:

During the current COVID-19 pandemic, NHS 111 are triaging 'potential COVID-19' patients using new and evolving telephone and online systems. PHE are working with NHS 111 and NHS England to ensure that syndromic surveillance indicators monitor trends in these calls and online assessments. Any changes within the NHS 111 triaging systems will be reflected in our routine syndromic indicators and 'potential COVID-19' indicators.

An individual may use both the NHS 111 Online and NHS 111 telephony services. Therefore, counts of individuals from the two services cannot be considered as distinct counts of individuals with potential COVID-19 symptoms.

All NHS 111 syndromic trends should be interpreted with caution due to current national advice and guidance regarding access to health care services during the COVID-19 pandemic.

NHS 111 'potential COVID-19' call data

- The NHS 111 'potential COVID-19' syndromic indicator may not include all NHS 111 integrated urgent care service calls and therefore should be used to monitor trends in calls rather than numbers.
- The 'Potential COVID-19' syndromic indicator includes NHS 111 calls triaged using NHS Pathways and given a COVID-19 disposition (call outcome). These data are based on potential COVID-19 symptoms reported by callers and are not based on outcomes of tests for coronavirus. Prior to 11 May 2020 callers with COVID-19-like symptoms were assessed via COVID-19 Pathways. From 11 May 2020 callers who are assessed as having probable COVID-19 symptoms are triaged in symptom specific pathways which are included in our routine syndromic indicators.

NHS 111 'potential COVID-19' completed online assessment data

- The NHS 111 online data presented in this report are based on 'potential COVID-19' symptoms reported by the public via the NHS 111 Online service or the COVID-19 Response Centre and are not based on outcomes of tests for coronavirus. Any user that launches a COVID-19 online assessment may access the service multiple times and can change their answers and follow multiple journeys through the online system. The data presented are therefore completed online assessments rather than counts of individuals and should be used to monitor trends rather than numbers.
- From 11 June 2020 online users who are assessed as having probable COVID-19 symptoms will be triaged using symptom specific pathways.

Notes on charts

- Weekends and bank holidays are marked by vertical grey lines (bank holidays darker grey). Counts of calls and completed online assessments are shown with 7-day moving averages (adjusted for bank holidays) overlaid on the daily data reported in each chart, unless specified.
- Where shown, baselines have been remodelled in June 2021 to represent seasonally expected levels of activity and are constructed from historical data since January 2018. They take account of any known substantial changes in data collection, population coverage or reporting practices. Baselines are reviewed on a regular basis.
- Where shown, orange dotted lines represent counter-factual models showing seasonally expected levels if COVID-19 had not occurred.
- NHS 111 call and Online data are analysed on a daily basis to identify national and regional trends. A statistical algorithm underpins each system, routinely identifying activity that has increased significantly or is statistically significantly high for the time of year. Results from these daily analyses are assessed by the ReSST, along with analysis by age group, and anything deemed of public health importance is alerted by the team.

17 August 2021

Year: 2021

Week: 32

Notes and further information:

- Further information about NHS 111 can be found at:
<https://www.nhs.uk/using-the-nhs/nhs-services/urgent-and-emergency-care/nhs-111/>
- The Remote Health Advice Syndromic Surveillance bulletin can also be downloaded from the PHE Real-time Syndromic Surveillance website which also contains more information about syndromic surveillance:
<https://www.gov.uk/government/collections/syndromic-surveillance-systems-and-analyses>

Acknowledgements:

We are grateful to NHS 111 and to NHS Digital for their assistance and support in providing the anonymised data that underpin the Remote Health Advice Syndromic Surveillance System.

Contact ReSST:
syndromic.surveillance
@phe.gov.uk

Produced by: PHE Real-time Syndromic Surveillance Team
Web: <https://www.gov.uk/government/collections/syndromic-surveillance-systems-and-analyses>