

SPI-M-O

Medium-Term Projections

21st July 2021

SPI-M-O Medium-term Projections

- **These projections are not forecasts or predictions.** They represent a scenario in which the trajectory of the epidemic continues to follow the trends that were seen in the data up to 19th July.
- **These projections do not include the impact of recent relaxations across the UK, such as Step 4 of the roadmap in England and move to level 0 in Scotland on 19th July.** The delay between infection, developing symptoms, the need for hospital care, and death means they cannot fully reflect the impact of policy and behavioural changes made in the two to three weeks prior to 19th July.
- Predicting the peak of the epidemic in a particular nation or region is difficult and prone to large levels of uncertainty. **The recent relaxations are expected to increase transmission of the virus and alter the height and timing of the peaks shown in some of these projections.**
- **These projections do not include the effects of any future policy or behavioural changes.** The effect of school opening and closing has been included.
- **The projections include the impact of vaccines given over the next three weeks.** This has been based on a rollout scenario provided by Cabinet Office for modelling purposes. The rollout of these doses will have limited impact over this timescale, given lags between vaccination and protection, and between infection and hospital admission.
- The projections assume vaccinations are administered according to JCVI's priority order, with uptake in the over 40-year olds based on the number of vaccines given to date and uptake in those aged 40 and under assumed to be 80%.
- Modelling groups have used their expert judgement and evidence from [Public Health England](#), [Scottish Universities & Public Health Scotland](#), and other published efficacy studies when making assumptions about vaccine effectiveness. A table summarising these assumptions is available in the annex.
- The number of hospitalisations and deaths have fallen to very low levels in some nations and regions. Projecting forwards is difficult when numbers fall to very low levels, therefore SPI-M-O have decided to pause producing medium-term projections in areas where this is the case. The small numbers can also introduce apparent inconsistency as regions are aggregated.
- Not all modelling groups produce projections for both hospitalisations and deaths so there will be some differences between the models included in the combined projections for each metric.

Metrics:

- **New hospitalisations per day:** Number of individuals admitted with COVID-19 and inpatients newly diagnosed with COVID-19. Data definitions differ slightly across all four nations.
- **New deaths per day (by date of death):** The number of COVID-19 deaths within 28 days of a positive test. Data definitions differ slightly across all four nations.

Modelled projections based on trends to 19th July 2021

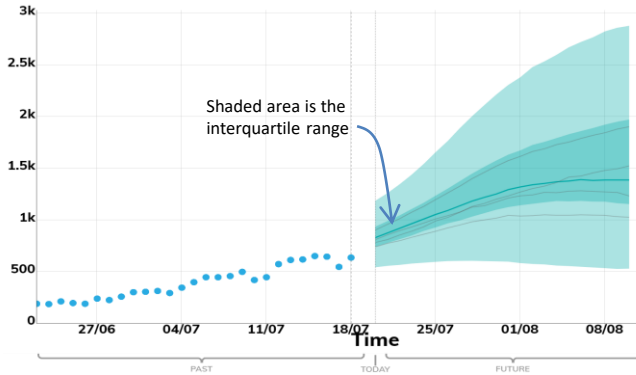
New hospital admissions per day

These projections are based on current trends and will not fully reflect the impact of policy or behavioural changes over the past two to three weeks. They are not forecasts or predictions.

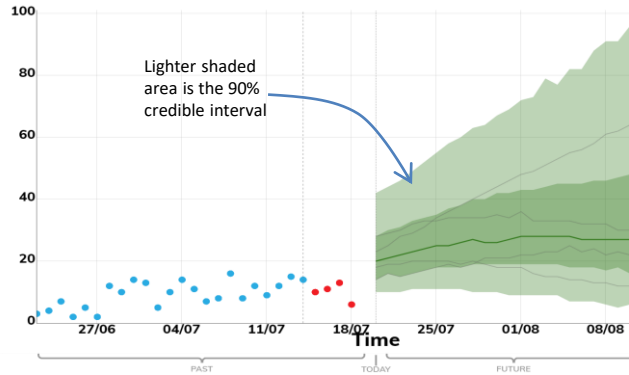
Key

- • • Real data
- • • Expected to Increase
- Projection Midpoint
- High and low estimates 5th to 95th percentile
- High and low estimates 25th to 75th percentile
- Models

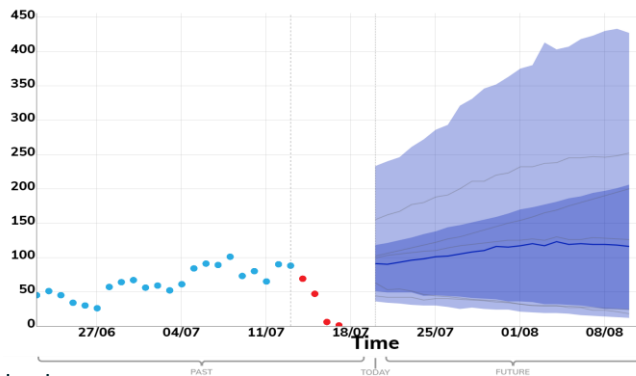
ENGLAND



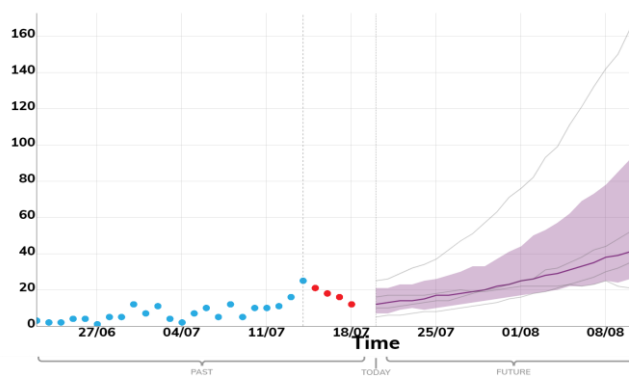
WALES



SCOTLAND



NORTHERN IRELAND



The fan charts show the **90% credible interval and interquartile range** of the combined projections based on current trends for England, Scotland and Wales. For Northern Ireland, only the **interquartile range** is shown. The projections cannot account for the impact of policy or behavioural changes in the two to three weeks prior to 19th July, such as Step 4 of the roadmap in England and move to level 0 in Scotland, as the impact of these changes will not yet be reflected in epidemiological data.

These projections include the potential impact of vaccines to be given over the next three weeks. This has been based on a rollout scenario provided by Cabinet Office for modelling purposes; with uptake in the over 40-year olds based on the number of vaccines given to date and uptake in those aged 40 and under assumed to be 80%. These doses will have a limited impact over this timescale, given lags between vaccination and protection, and between infection and hospital admission.

The projections do not include the effects of any future policy or behavioural changes.

Data notes:

England: Number of patients admitted with confirmed COVID-19 and the number of inpatients diagnosed with COVID-19 in the past 24 hours. Taken from NHSE COVID-19 Situation reports.

Wales: Number of patients admitted with confirmed COVID-19 and inpatients diagnosed with COVID-19. Provided by Public Health Wales.

Scotland: Number of patients who tested positive for COVID-19 in the 14 days prior to admission, on the day of admission, or during their stay in hospital. Readmissions within 14 days of a positive test are excluded. Provided by Public Health Scotland.

Northern Ireland: Number of patients admitted with confirmed COVID-19 and inpatients diagnosed with COVID-19. Provided by Health and Social Care Northern Ireland.

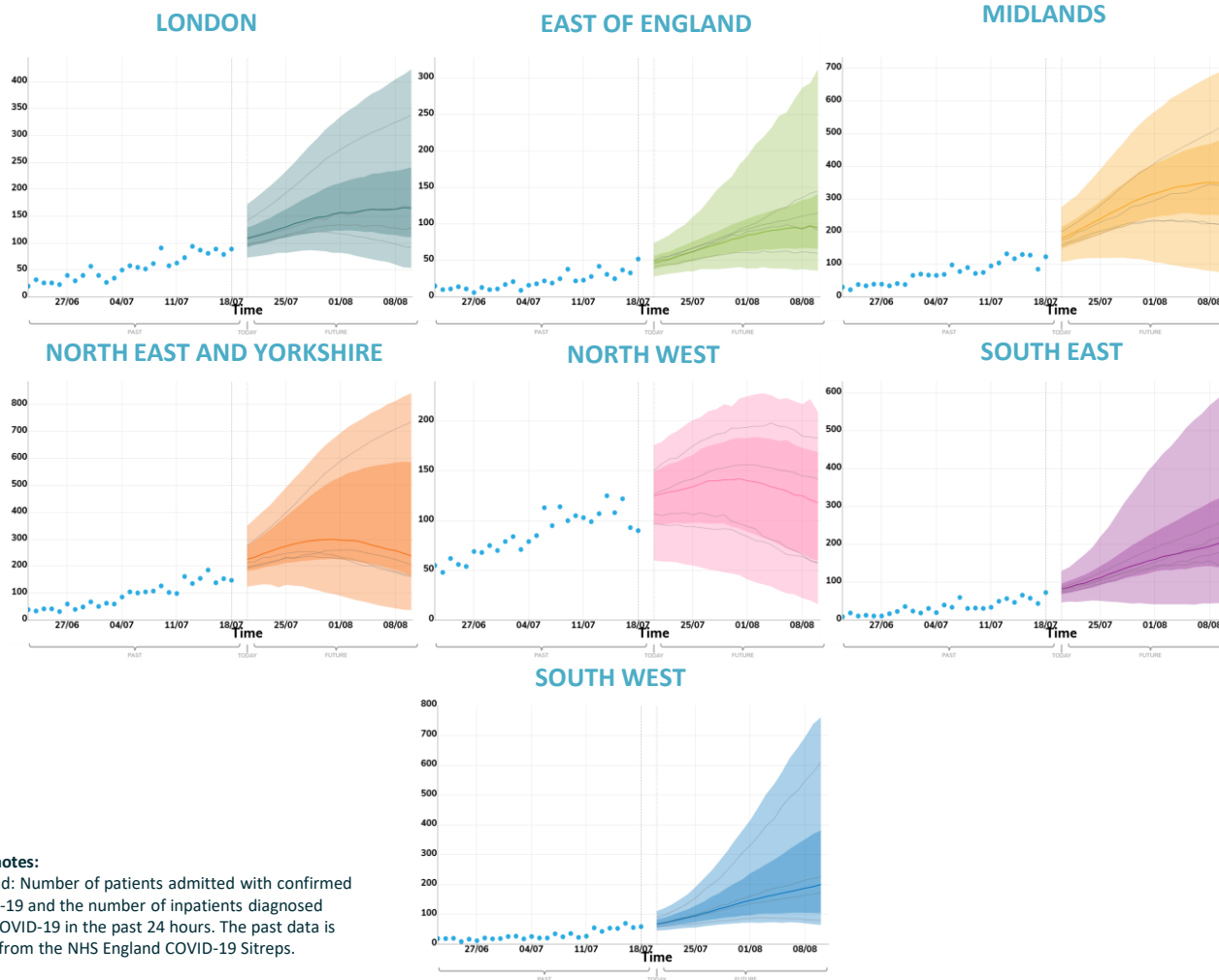
Modelled projections based on trends to 19th July 2021

New hospital admissions per day

These projections are based on current trends and will not fully reflect the impact of policy or behavioural changes over the past two to three weeks. They are not forecasts or predictions.

Key

- • • Real data
- • • Expected to Increase
- Projection Midpoint
- High and low estimates 5th to 95th percentile
- High and low estimates 25th to 75th percentile
- Models



The fan charts show the **90% credible interval and interquartile range** of the combined projections based on current trends. The projections cannot account for the impact of policy or behavioural changes in the two to three weeks prior to 19th July, such as Step 4 of the roadmap in England and move to level 0 in Scotland, as the impact of these changes will not yet be reflected in epidemiological data.

These projections include the potential impact of vaccines to be given over the next three weeks. This has been based on a rollout scenario provided by Cabinet Office for modelling purposes; with uptake in the over 40-year olds based on the number of vaccines given to date and uptake in those aged 40 and under assumed to be 80%. These doses will have a limited impact over this timescale, given lags between vaccination and protection, and between infection and hospital admission.

The projections do not include the effects of any future policy or behavioural changes.

Data notes:

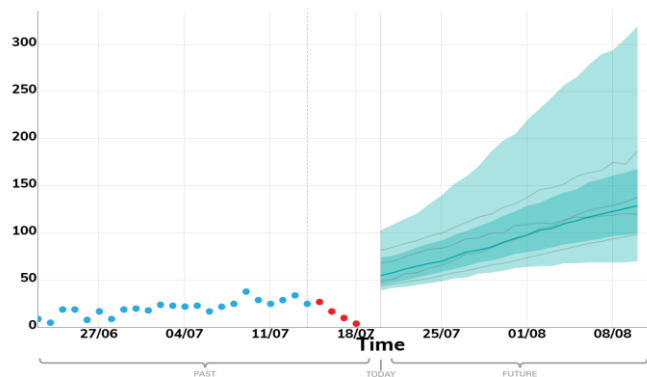
England: Number of patients admitted with confirmed COVID-19 and the number of inpatients diagnosed with COVID-19 in the past 24 hours. The past data is taken from the NHS England COVID-19 Sitreps.

Modelled projections based on trends to 19th July 2021

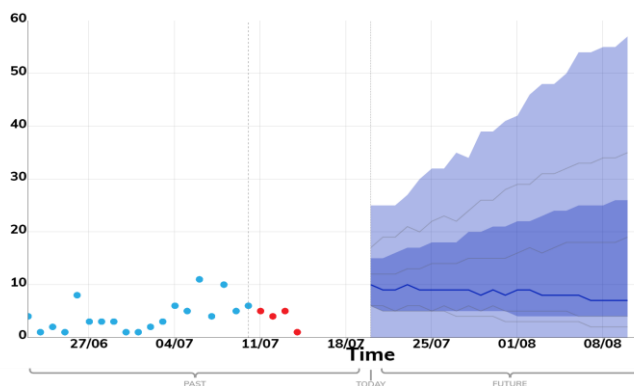
New deaths per day

These projections are based on current trends and will not fully reflect the impact of policy or behavioural changes over the past two to three weeks. They are not forecasts or predictions.

ENGLAND



SCOTLAND



WALES

SPI-M's consensus view is that the number of deaths in Wales will remain low over the next three weeks.

NORTHERN IRELAND

SPI-M's consensus view is that the number of deaths in Northern Ireland will remain low over the next three weeks.

Key

- • • Real data
- • • Expected to Increase
- Projection Midpoint
- High and low estimates 5th to 95th percentile
- High and low estimates 25th to 75th percentile
- Models

The fan charts show the **90% credible interval and interquartile range** of the combined projections based on current trends. The projections cannot account for the impact of policy or behavioural changes in the two to three weeks prior to 19th July, such as Step 4 of the roadmap in England and move to level 0 in Scotland, as the impact of these changes will not yet be reflected in epidemiological data.

These projections include the potential impact of vaccines to be given over the next three weeks. This has been based on a rollout scenario provided by Cabinet Office for modelling purposes; with uptake in the over 40-year olds based on the number of vaccines given to date and uptake in those aged 40 and under assumed to be 80%. These doses will have a limited impact over this timescale, given lags between vaccination and protection, and between infection and hospital admission.

The projections do not include the effects of any future policy or behavioural changes.

Data Notes:

The number of COVID-19 deaths (by date of death) within 28 days of a positive test.

The past data for England is taken from the PHE line list of deaths. The past data for Scotland, Wales, and Northern Ireland is taken from the Coronavirus (COVID-19) in the UK dashboard on Gov.uk.

Modelled projections based on trends to 19th July 2021

New deaths per day

These projections are based on current trends and will not fully reflect the impact of policy or behavioural changes over the past two to three weeks. They are not forecasts or predictions.

Key

- • • Real data
- • • Expected to Increase
- Projection Midpoint
- High and low estimates 5th to 95th percentile
- High and low estimates 25th to 75th percentile
- Models

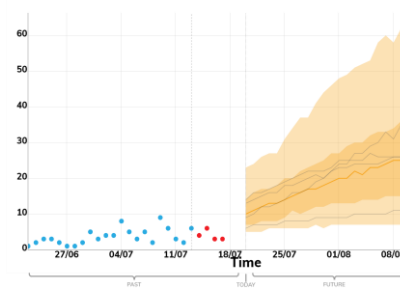
LONDON

SPI-M's consensus view is that the number of deaths in London will remain low over the next three weeks.

EAST OF ENGLAND

SPI-M's consensus view is that the number of deaths in the East of England will remain low over the next three weeks.

MIDLANDS

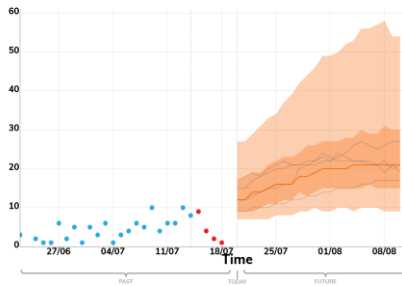


The fan charts show the **90% credible interval and interquartile range** of the combined projections based on current trends. The projections cannot account for the impact of policy or behavioural changes in the two to three weeks prior to 19th July, such as Step 4 of the roadmap in England and move to level 0 in Scotland, as the impact of these changes will not yet be reflected in epidemiological data.

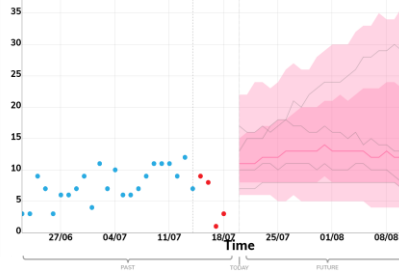
SOUTH EAST

SPI-M's consensus view is that the number of deaths in the South East will remain low over the next three weeks.

NORTH EAST AND YORKSHIRE



NORTH WEST



SOUTH WEST

SPI-M's consensus view is that the number of deaths in the South West will remain low over the next three weeks.

These projections include the potential impact of vaccines to be given over the next three weeks. This has been based on a rollout scenario provided by Cabinet Office for modelling purposes; with uptake in the over 40-year olds based on the number of vaccines given to date and uptake in those aged 40 and under assumed to be 80%. These doses will have a limited impact over this timescale, given lags between vaccination and protection, and between infection and hospital admission.

The projections do not include the effects of any future policy or behavioural changes.

Data Notes:

The number of COVID-19 deaths (by date of death) within 28 days of a positive test.
The past data for England is taken from the PHE line list of deaths.

Annex: SPI-M-O Vaccine Effectiveness Assumptions

| | | Imperial [2] (Death) | Imperial [2] (Severe disease) | Manchester [1] | Warwick [2] (Death) | Warwick [2] (Hospitalisation) | PHE/ Cambridge [2] | Scottish Government [2] |
|------------------------|---------|-------------------------|----------------------------------|-------------------|------------------------|----------------------------------|-----------------------|-------------------------------|
| Pfizer- BioNTech | 1 Dose | 85% | 85% | 75% | 90% | 90% | 78% | 91% |
| | 2 Doses | 95% | 95% | 75% | 98% | 98% | 97% | 98% |
| Oxford- AstraZeneca | 1 Dose | 80% | 80% | 75% | 81% | 81% | 78% | 88% |
| | 2 Doses | 95% | 90% | 75% | 95% | 94% | 97% | 98% |
| Moderna | 1 Dose | 85% | 85% | 75% | 90% | 90% | 78% | 90% |
| | 2 Doses | 95% | 95% | 75% | 98% | 98% | 97% | 98% |

| | | Imperial [2] | Manchester [1] | Warwick [2] | PHE/ Cambridge [2] | Scottish Government [2] |
|------------------------|---------|--------------|----------------|-------------|--------------------------|----------------------------|
| Pfizer-BioNTech | 1 Dose | 33% | 75% | 56% | 31% | 68% |
| | 2 Doses | 85% | 75% | 80% | 80% | 90% |
| Oxford- AstraZeneca | 1 Dose | 33% | 75% | 34% | 31% | 62% |
| | 2 Doses | 58% | 75% | 64% | 80% | 78% |
| Moderna | 1 Dose | 33% | 75% | 56% | 31% | 68% |
| | 2 Doses | 85% | 75% | 80% | 80% | 90% |

| | | Imperial [2] | Manchester [4] | Warwick [2] | PHE/ Cambridge [2,4] | Scottish Government [2,4] |
|------------------------|---------|--------------|----------------|-------------|----------------------------|------------------------------|
| Pfizer-BioNTech | 1 Dose | 40% | - | 45% | - | - |
| | 2 Doses | 40% | - | 45% | - | - |
| Oxford- AstraZeneca | 1 Dose | 40% | - | 45% | - | - |
| | 2 Doses | 40% | - | 45% | - | - |
| Moderna | 1 Dose | 40% | - | 45% | - | - |
| | 2 Doses | 40% | - | 45% | - | - |

[1] Manchester's model does not split vaccine effectiveness by vaccine type or different doses.

[2] Imperial, Warwick, PHE/Cambridge & Scottish Government's vaccine effectiveness assumptions are for the B.1.617.2 (delta) variant.

[3] The assumed delay between vaccination and protection varies between 10 and 21 days for dose 1 and between 7 and 21 days for dose 2 across the modelling groups.

[4] The Manchester, PHE/ Cambridge and Scottish Government models do not include a reduction in the risk of onwards transmission after receiving either vaccine.