

Dynamic CO-CIN report to SAGE and NERVTAG

Dynamic content updated: 2021-07-21 03:03:08.

Executive summary

Includes patients admitted on or after 01 May 2021

There are 5106 patients included in CO-CIN. Of these, 296 patient(s) have died and 709 required ICU. 3393 have been discharged home.

Admission

Figure 1

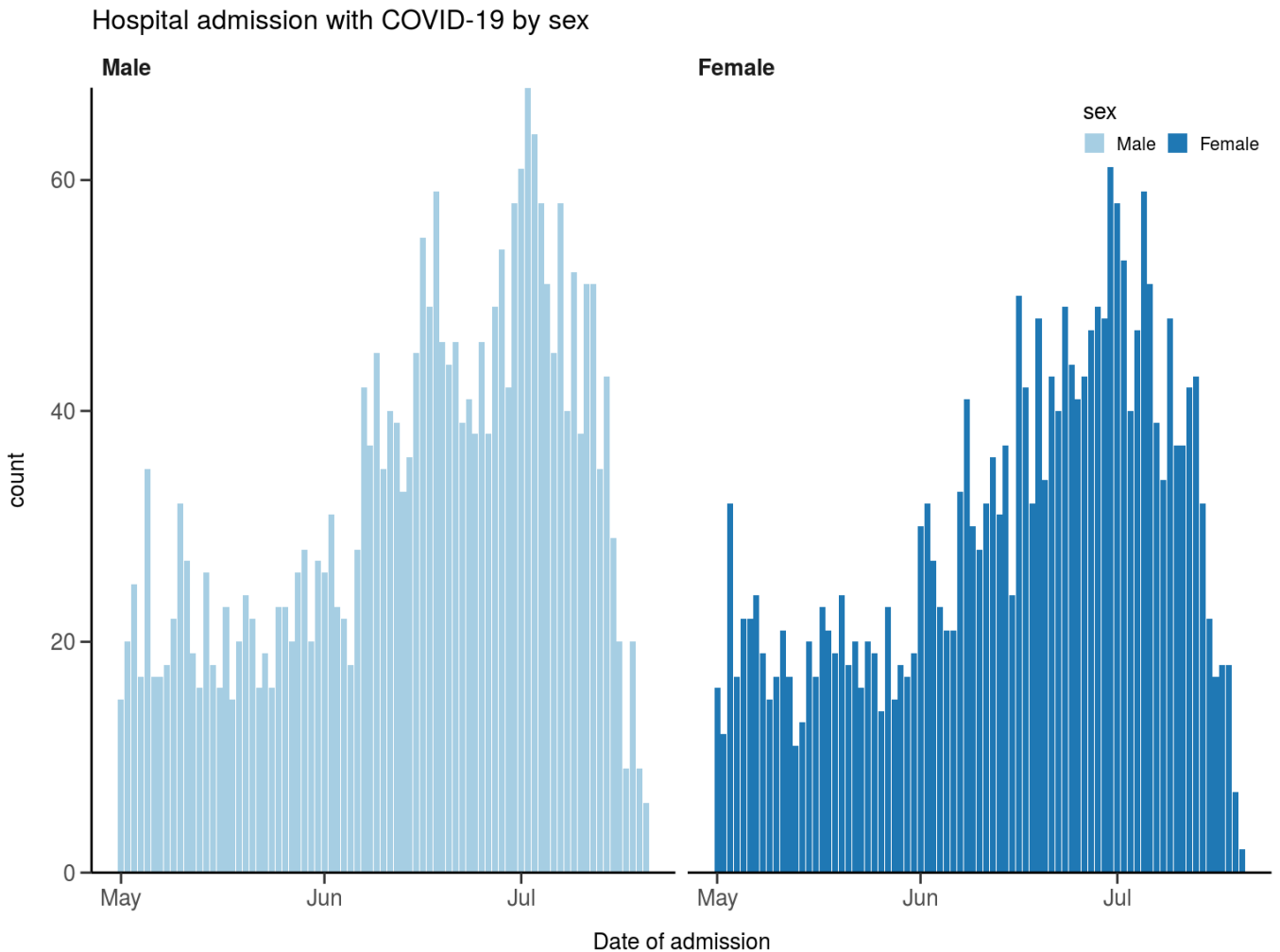
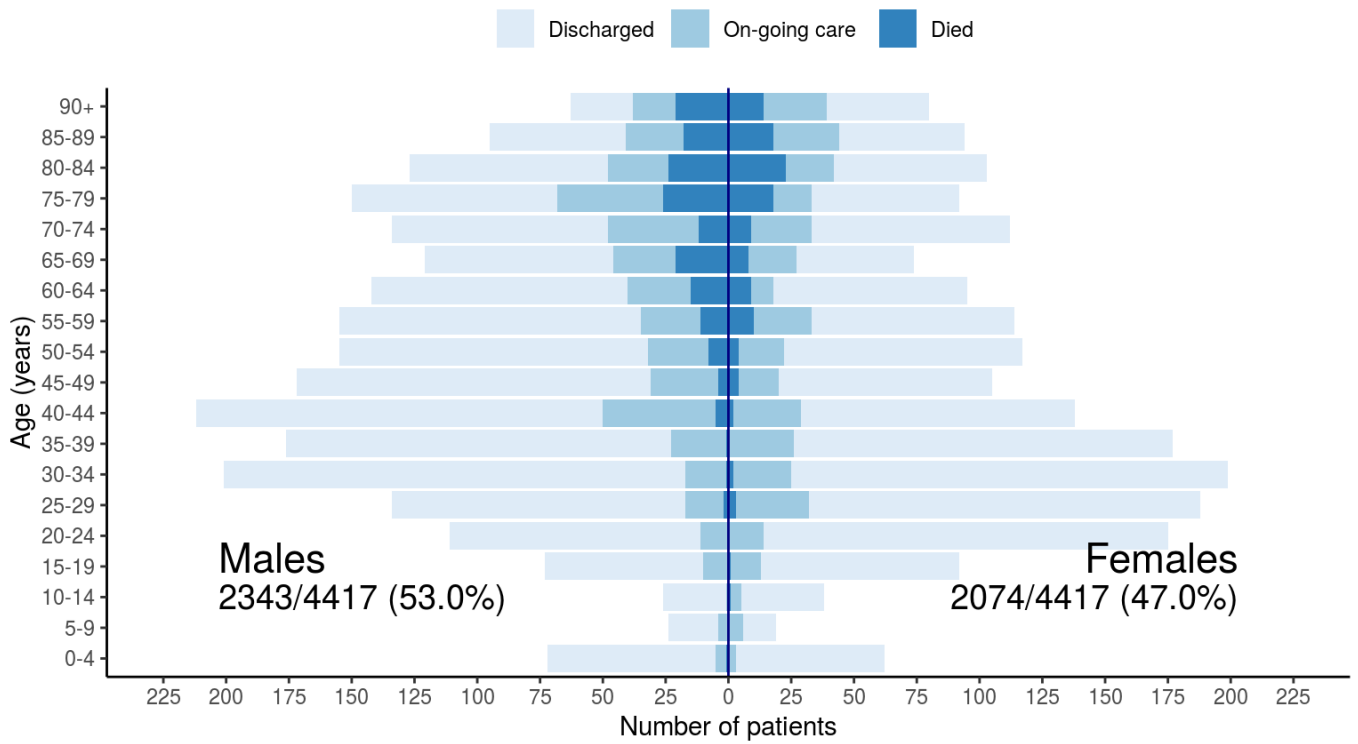


Figure 2

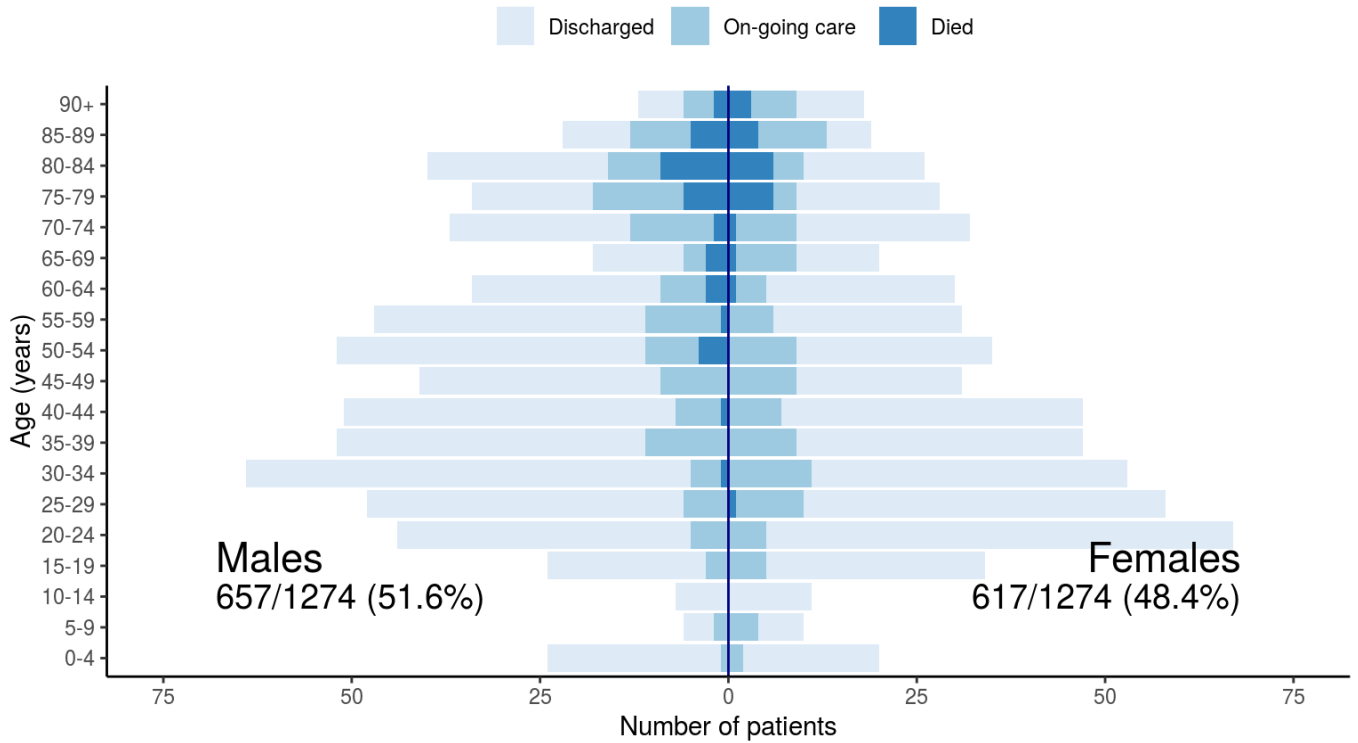
Patients with outcome stratified by age, and sex

All



Patients with outcome stratified by age, and sex

Admitted ≥ 14 days and ≤ 28 days ago



Patient flow

Figure 7A - All patients

N = 4787

Patient status by day

Cumulative for discharge/death

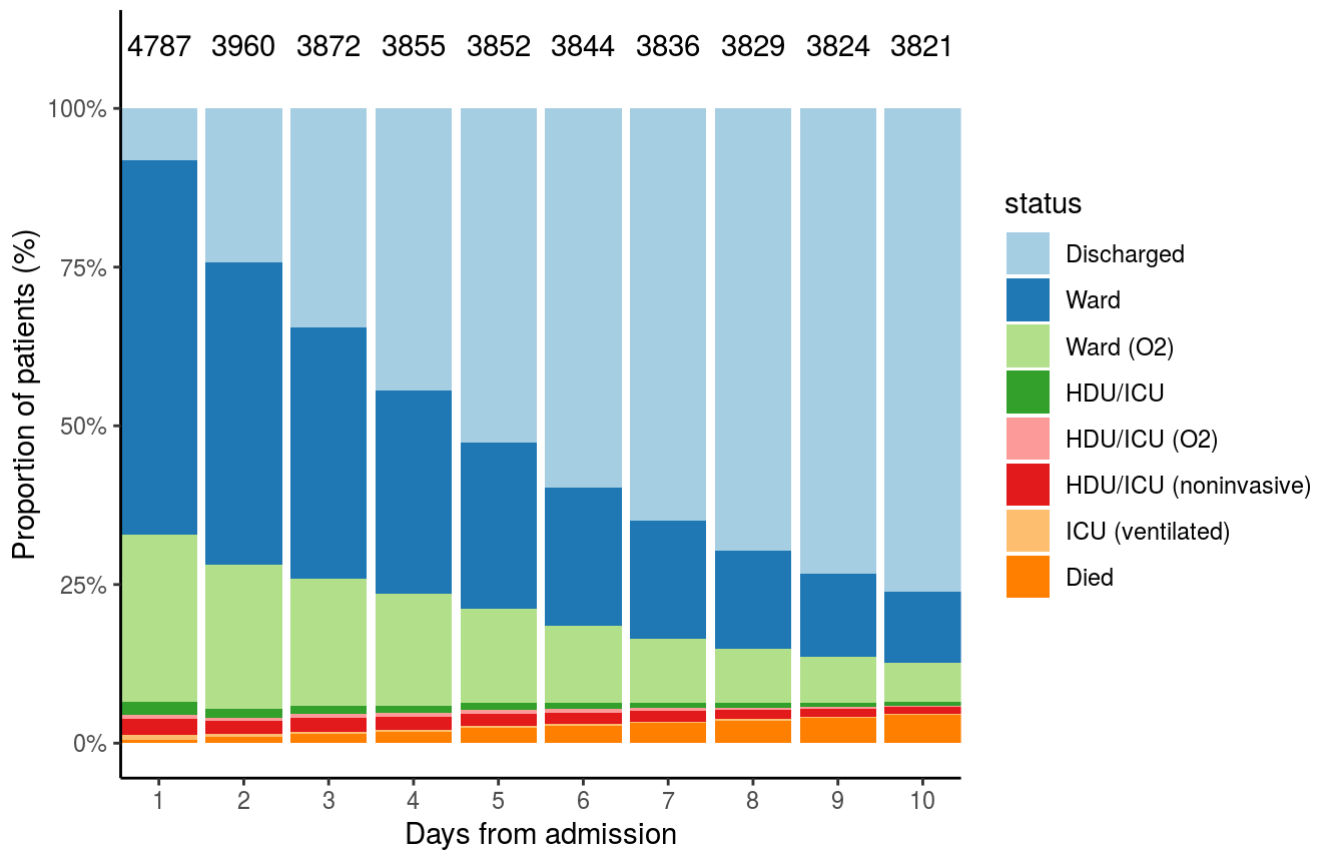
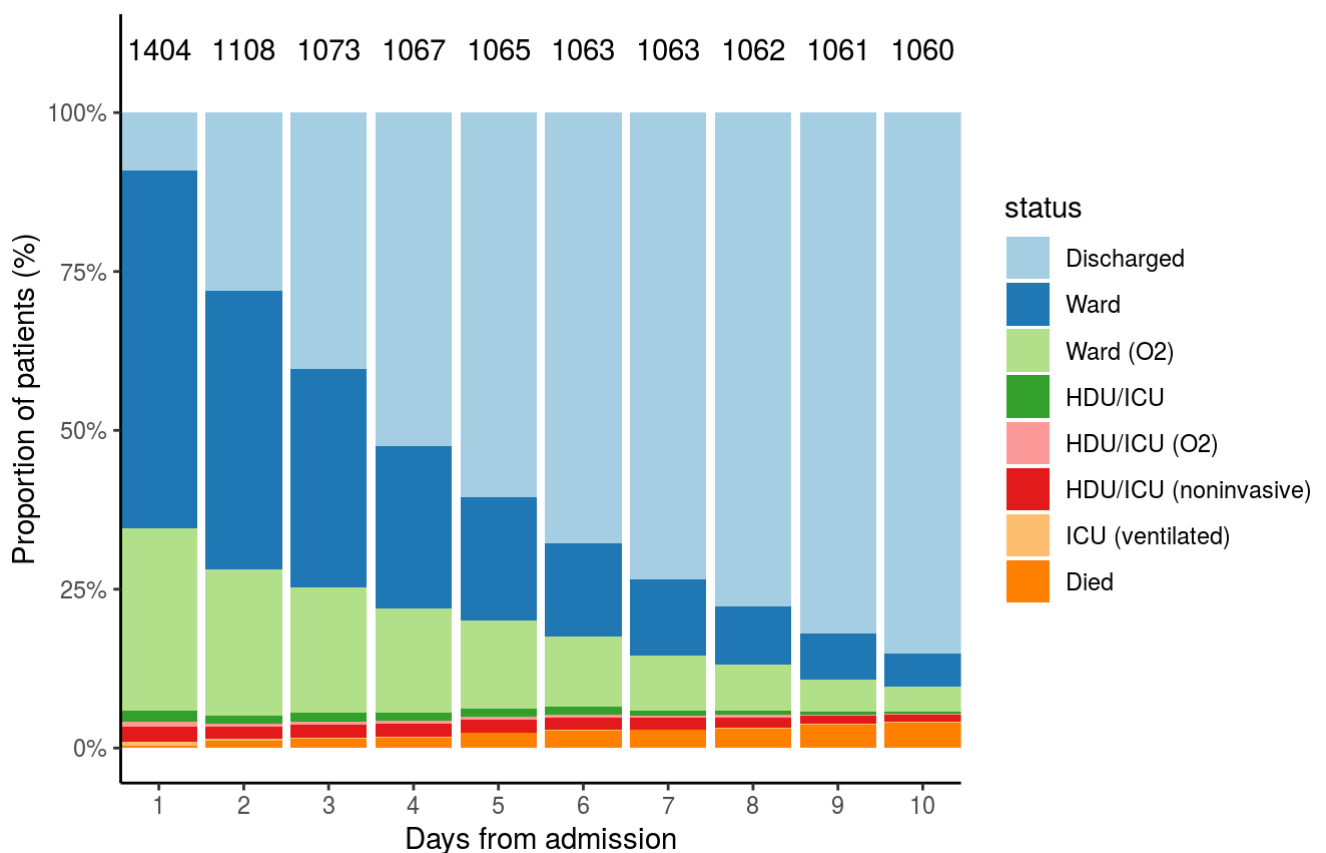


Figure 7B - Patients admitted ≥ 14 days and ≤ 28 days ago

N = 1404

Patient status by day

Cumulative for discharge/death



Oxygen requirement

Figure 8A - All patients

N = 4557

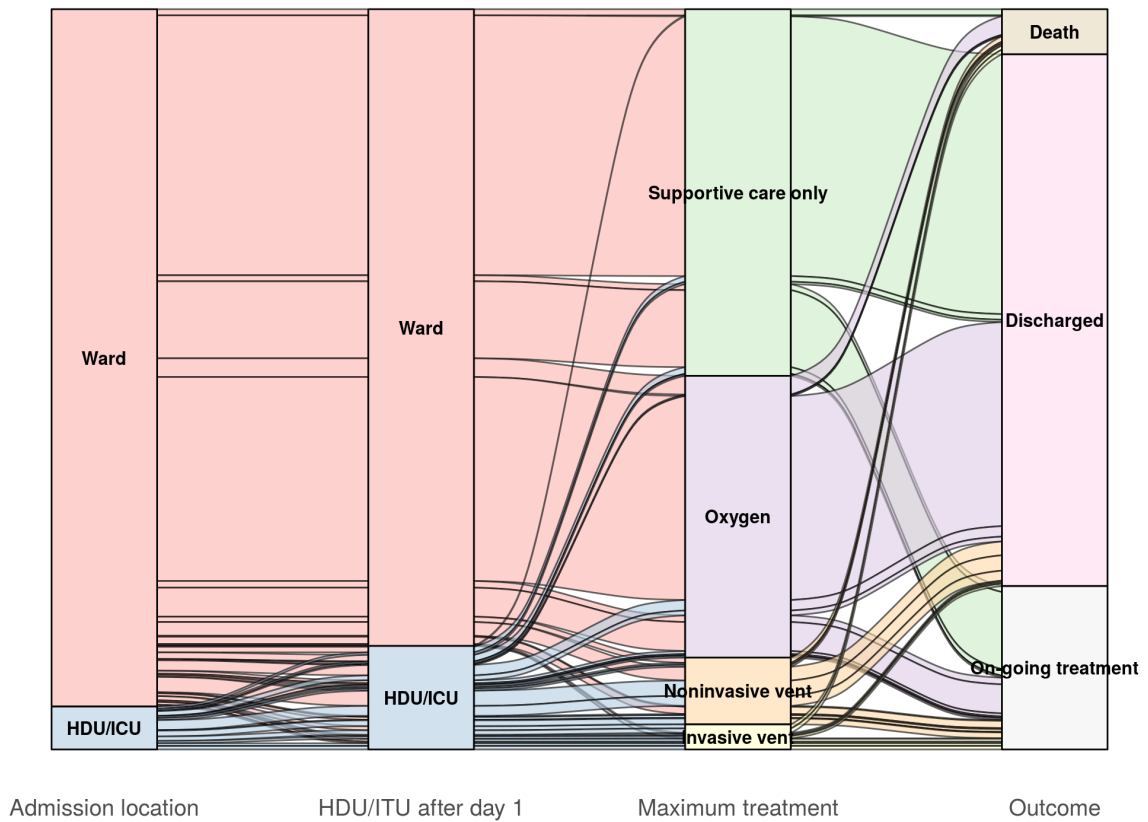


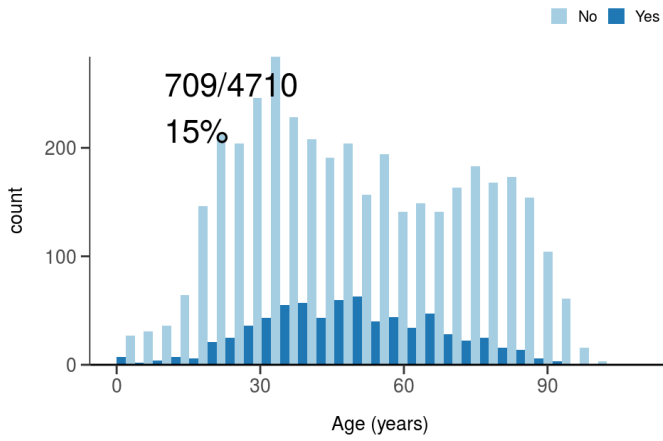
Figure 8B - Patients admitted ≥ 14 days and ≤ 28 days ago

N = 1340

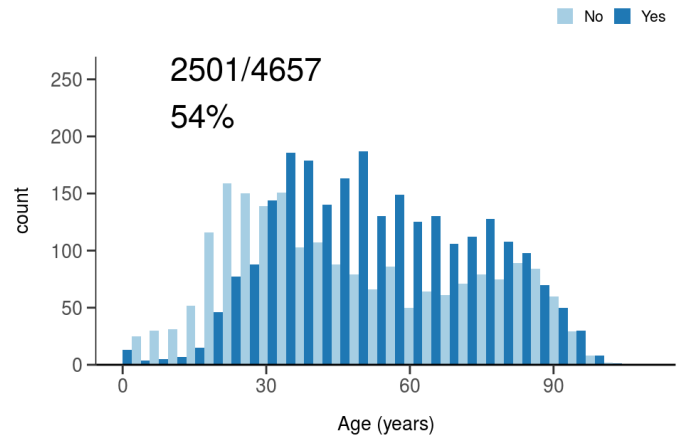
Treatment

Figure 10

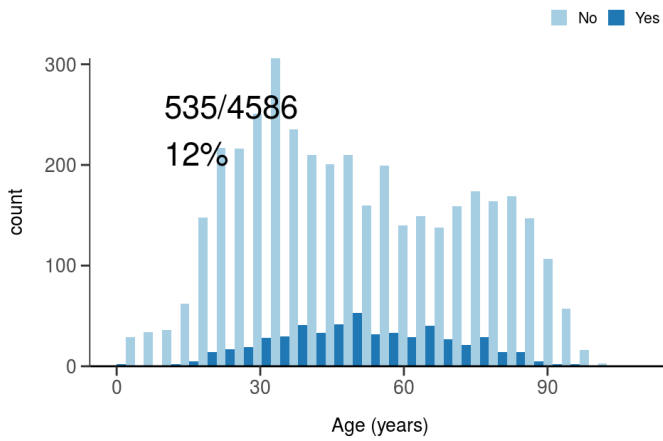
ICU/HDU admission
Figure 10A



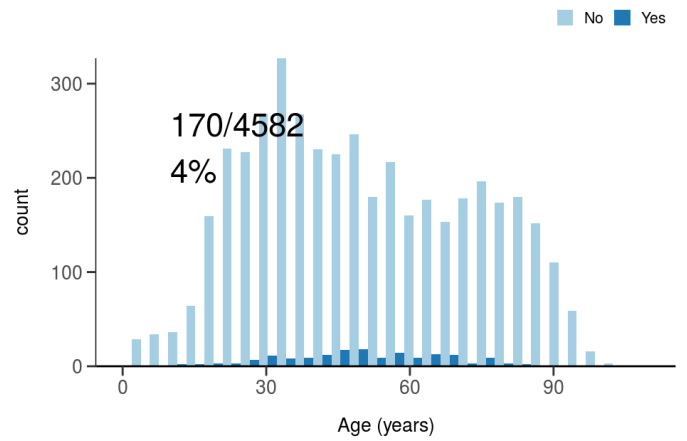
High flow oxygen
Figure 10B



Noninvasive ventilation
Figure 10C



Invasive ventilation
Figure 10D

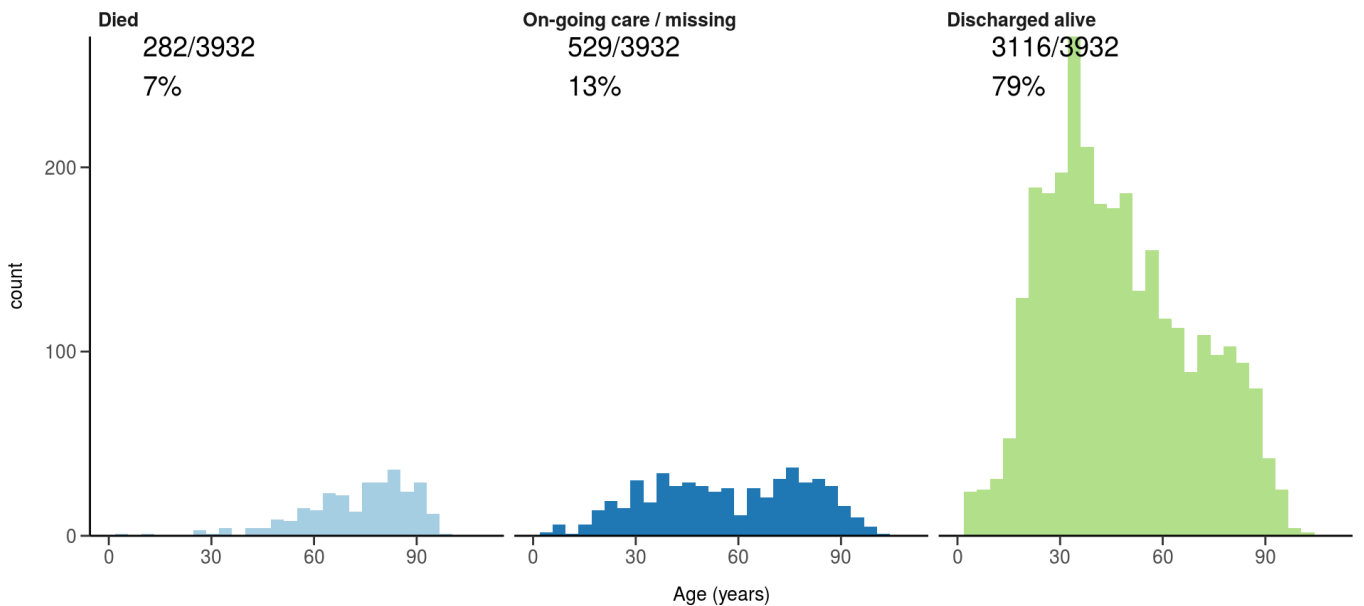


Status in patients admitted ≥ 14 days from today

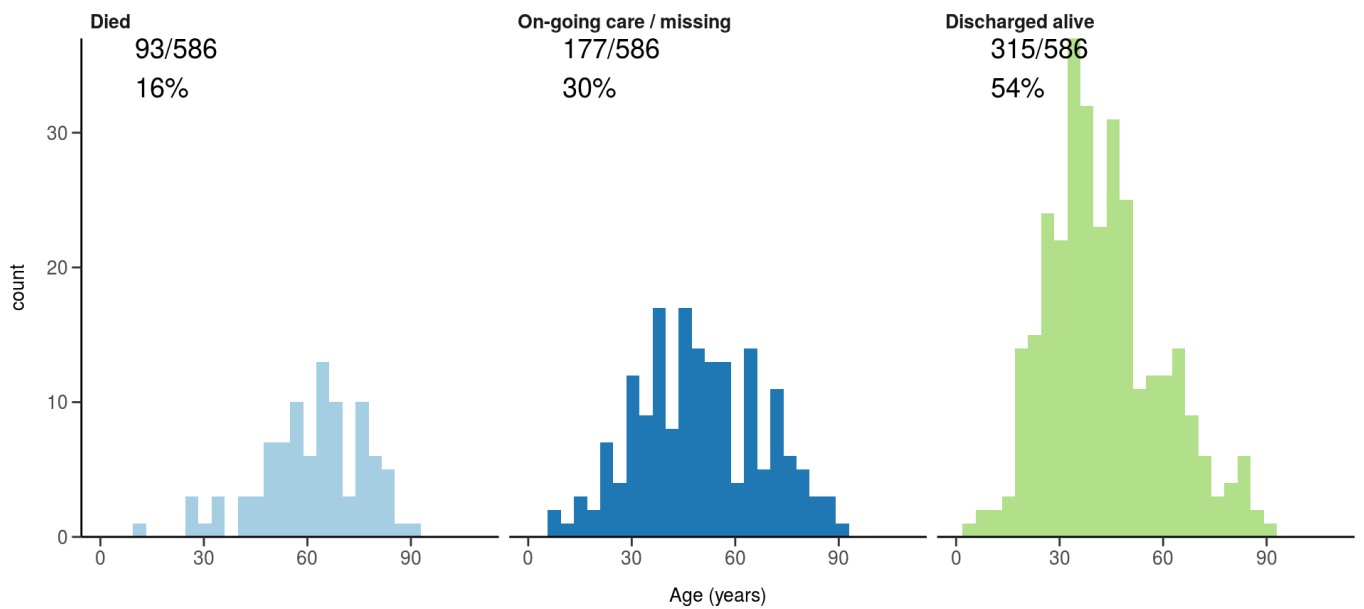
Figure 11

Where outcome is not reported, on-going care is assumed.

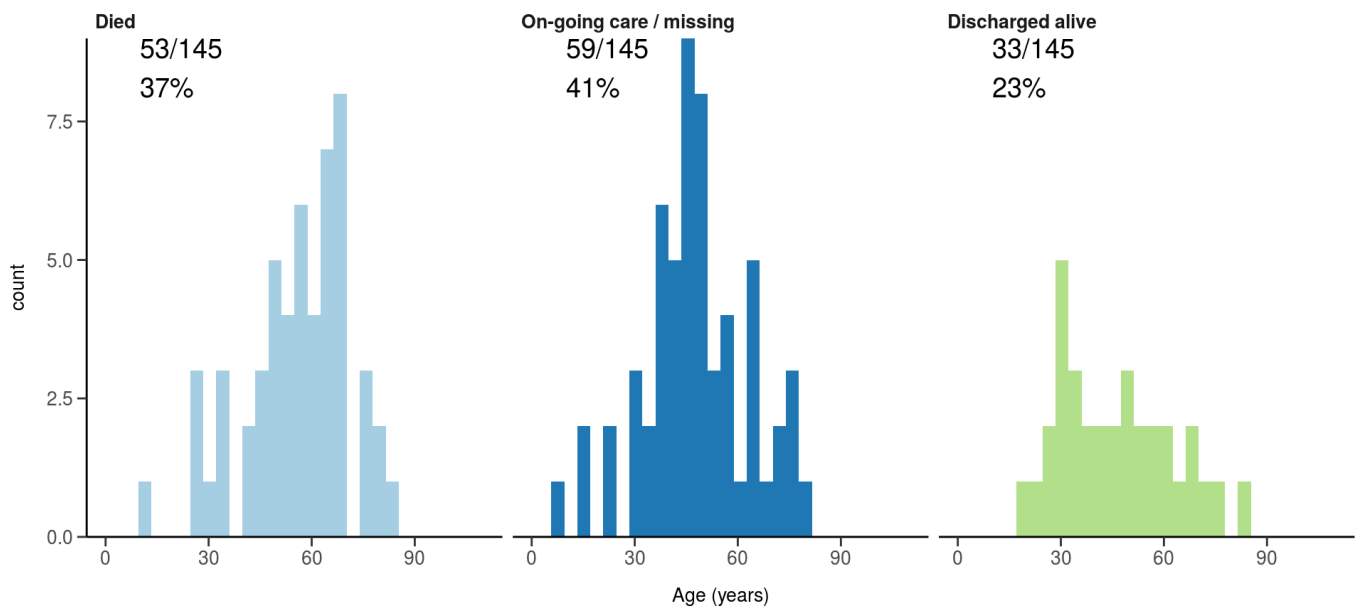
All: status in patients admitted ≥ 14 days ago
Figure 11A



ICU/HDU admissions: status in patients admitted ≥ 14 days ago
 Figure 11B



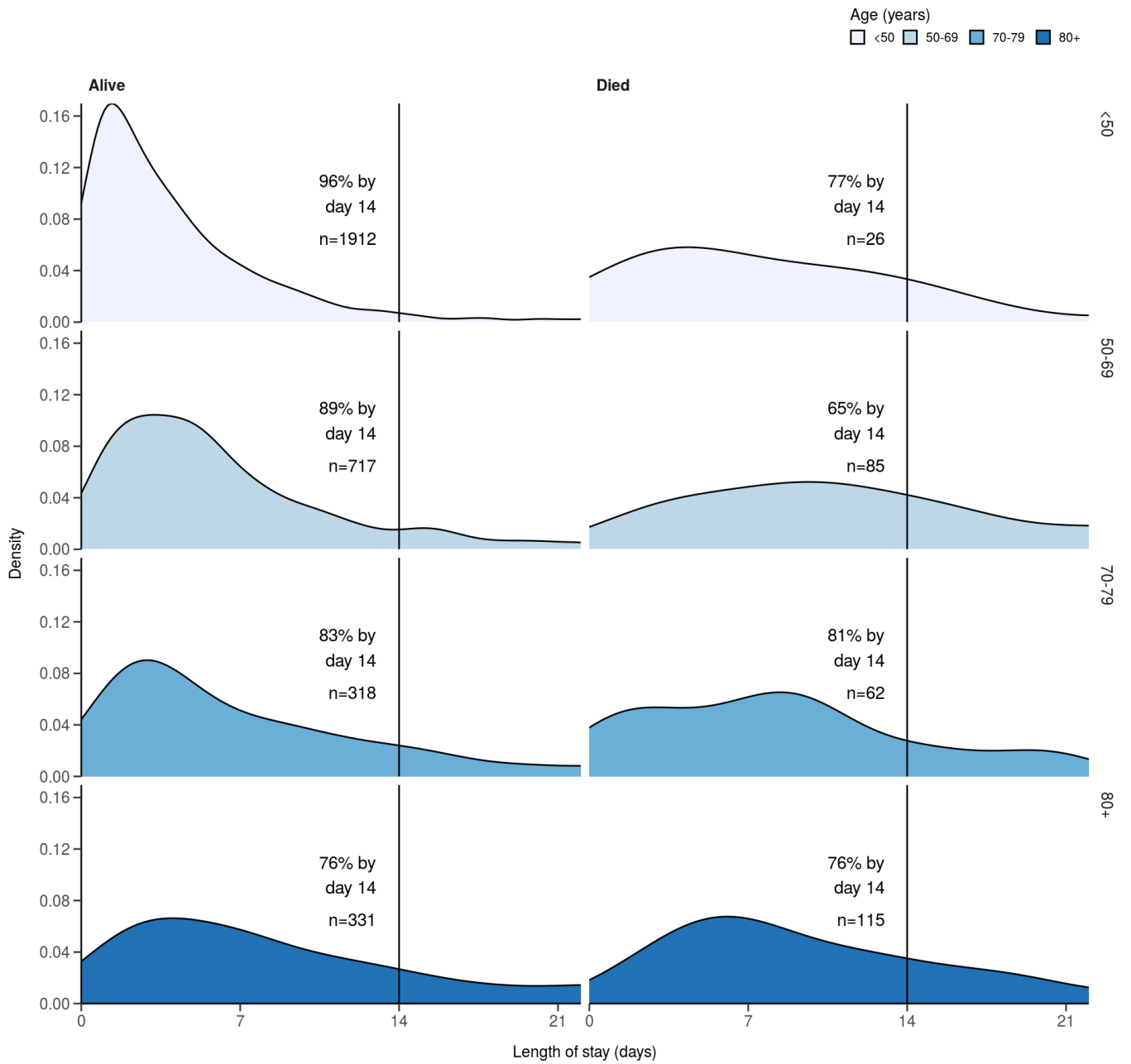
Invasive ventilation: status in patients admitted ≥ 14 days ago
 Figure 11c



Length of stay stratified by age

Figure 12

Length of stay stratified by age and mortality
 Proportion who reach outcome by day 14 shown



Data

Table for figure 2A

age.factor	sex	status	n
0-4	Male	Discharged	67
0-4	Male	On-going care	4
0-4	Male	Died	1
0-4	Female	Discharged	59
0-4	Female	On-going care	3
5-9	Male	Discharged	20
5-9	Male	On-going care	4

age.factor	sex	status	n
5-9	Female	Discharged	13
5-9	Female	On-going care	6
10-14	Male	Discharged	25
10-14	Male	On-going care	1
10-14	Female	Discharged	33
10-14	Female	On-going care	4
10-14	Female	Died	1
15-19	Male	Discharged	63
15-19	Male	On-going care	10
15-19	Female	Discharged	79
15-19	Female	On-going care	12
15-19	Female	Died	1
20-24	Male	Discharged	100
20-24	Male	On-going care	11
20-24	Female	Discharged	161
20-24	Female	On-going care	14
25-29	Male	Discharged	117
25-29	Male	On-going care	15
25-29	Male	Died	2
25-29	Female	Discharged	156
25-29	Female	On-going care	29
25-29	Female	Died	3
30-34	Male	Discharged	184
30-34	Male	On-going care	16
30-34	Male	Died	1
30-34	Female	Discharged	174
30-34	Female	On-going care	23
30-34	Female	Died	2
35-39	Male	Discharged	153
35-39	Male	On-going care	22
35-39	Male	Died	1
35-39	Female	Discharged	151

age.factor	sex	status	n
35-39	Female	On-going care	26
35-39	Not specified	Discharged	1
40-44	Male	Discharged	162
40-44	Male	On-going care	45
40-44	Male	Died	5
40-44	Female	Discharged	109
40-44	Female	On-going care	27
40-44	Female	Died	2
45-49	Male	Discharged	141
45-49	Male	On-going care	27
45-49	Male	Died	4
45-49	Female	Discharged	85
45-49	Female	On-going care	16
45-49	Female	Died	4
45-49	Not specified	On-going care	1
50-54	Male	Discharged	123
50-54	Male	On-going care	24
50-54	Male	Died	8
50-54	Female	Discharged	95
50-54	Female	On-going care	18
50-54	Female	Died	4
55-59	Male	Discharged	120
55-59	Male	On-going care	24
55-59	Male	Died	11
55-59	Female	Discharged	81
55-59	Female	On-going care	23
55-59	Female	Died	10
60-64	Male	Discharged	102
60-64	Male	On-going care	25
60-64	Male	Died	15
60-64	Female	Discharged	77
60-64	Female	On-going care	9

age.factor	sex	status	n
60-64	Female	Died	9
65-69	Male	Discharged	75
65-69	Male	On-going care	25
65-69	Male	Died	21
65-69	Female	Discharged	47
65-69	Female	On-going care	19
65-69	Female	Died	8
70-74	Male	Discharged	86
70-74	Male	On-going care	36
70-74	Male	Died	12
70-74	Female	Discharged	79
70-74	Female	On-going care	24
70-74	Female	Died	9
75-79	Male	Discharged	82
75-79	Male	On-going care	42
75-79	Male	Died	26
75-79	Female	Discharged	59
75-79	Female	On-going care	15
75-79	Female	Died	18
80-84	Male	Discharged	79
80-84	Male	On-going care	24
80-84	Male	Died	24
80-84	Female	Discharged	61
80-84	Female	On-going care	19
80-84	Female	Died	23
85-89	Male	Discharged	54
85-89	Male	On-going care	23
85-89	Male	Died	18
85-89	Female	Discharged	50
85-89	Female	On-going care	26
85-89	Female	Died	18
85-89	Not specified	Discharged	1

age.factor	sex	status	n
85-89	NA	Discharged	1
90+	Male	Discharged	25
90+	Male	On-going care	17
90+	Male	Died	21
90+	Female	Discharged	41
90+	Female	On-going care	25
90+	Female	Died	14

Table for figure 2B

age.factor	sex	status	n
0-4	Male	Discharged	23
0-4	Male	On-going care	1
0-4	Female	Discharged	18
0-4	Female	On-going care	2
5-9	Male	Discharged	4
5-9	Male	On-going care	2
5-9	Female	Discharged	6
5-9	Female	On-going care	4
10-14	Male	Discharged	7
10-14	Female	Discharged	11
15-19	Male	Discharged	21
15-19	Male	On-going care	3
15-19	Female	Discharged	29
15-19	Female	On-going care	5
20-24	Male	Discharged	39
20-24	Male	On-going care	5
20-24	Female	Discharged	62
20-24	Female	On-going care	5
25-29	Male	Discharged	42
25-29	Male	On-going care	6
25-29	Female	Discharged	48
25-29	Female	On-going care	9
25-29	Female	Died	1

age.factor	sex	status	n
30-34	Male	Discharged	59
30-34	Male	On-going care	4
30-34	Male	Died	1
30-34	Female	Discharged	42
30-34	Female	On-going care	11
35-39	Male	Discharged	41
35-39	Male	On-going care	11
35-39	Female	Discharged	38
35-39	Female	On-going care	9
35-39	Not specified	Discharged	1
40-44	Male	Discharged	44
40-44	Male	On-going care	6
40-44	Male	Died	1
40-44	Female	Discharged	40
40-44	Female	On-going care	7
45-49	Male	Discharged	32
45-49	Male	On-going care	9
45-49	Female	Discharged	22
45-49	Female	On-going care	9
50-54	Male	Discharged	41
50-54	Male	On-going care	7
50-54	Male	Died	4
50-54	Female	Discharged	26
50-54	Female	On-going care	9
55-59	Male	Discharged	36
55-59	Male	On-going care	10
55-59	Male	Died	1
55-59	Female	Discharged	25
55-59	Female	On-going care	6
60-64	Male	Discharged	25
60-64	Male	On-going care	6
60-64	Male	Died	3

age.factor	sex	status	n
60-64	Female	Discharged	25
60-64	Female	On-going care	4
60-64	Female	Died	1
65-69	Male	Discharged	12
65-69	Male	On-going care	3
65-69	Male	Died	3
65-69	Female	Discharged	11
65-69	Female	On-going care	8
65-69	Female	Died	1
70-74	Male	Discharged	24
70-74	Male	On-going care	11
70-74	Male	Died	2
70-74	Female	Discharged	23
70-74	Female	On-going care	8
70-74	Female	Died	1
75-79	Male	Discharged	16
75-79	Male	On-going care	12
75-79	Male	Died	6
75-79	Female	Discharged	19
75-79	Female	On-going care	3
75-79	Female	Died	6
80-84	Male	Discharged	24
80-84	Male	On-going care	7
80-84	Male	Died	9
80-84	Female	Discharged	16
80-84	Female	On-going care	4
80-84	Female	Died	6
85-89	Male	Discharged	9
85-89	Male	On-going care	8
85-89	Male	Died	5
85-89	Female	Discharged	6
85-89	Female	On-going care	9

age.factor	sex	status	n
85-89	Female	Died	4
85-89	Not specified	Discharged	1
90+	Male	Discharged	6
90+	Male	On-going care	4
90+	Male	Died	2
90+	Female	Discharged	9
90+	Female	On-going care	6
90+	Female	Died	3

Table for figure 7A

day	status	n
1	Discharged	394
1	Ward	2818
1	Ward (O2)	1264
1	HDU/ICU	94
1	HDU/ICU (O2)	35
1	HDU/ICU (noninvasive)	116
1	ICU (ventilated)	40
1	Died	26
2	Discharged	961
2	Ward	1887
2	Ward (O2)	895
2	HDU/ICU	56
2	HDU/ICU (O2)	22
2	HDU/ICU (noninvasive)	80
2	ICU (ventilated)	18
2	Died	41
3	Discharged	1338
3	Ward	1529
3	Ward (O2)	779
3	HDU/ICU	49
3	HDU/ICU (O2)	25
3	HDU/ICU (noninvasive)	80

day	status	n
3	ICU (ventilated)	18
3	Died	54
4	Discharged	1716
4	Ward	1234
4	Ward (O2)	678
4	HDU/ICU	43
4	HDU/ICU (O2)	25
4	HDU/ICU (noninvasive)	76
4	ICU (ventilated)	15
4	Died	68
5	Discharged	2026
5	Ward	1009
5	Ward (O2)	575
5	HDU/ICU	38
5	HDU/ICU (O2)	25
5	HDU/ICU (noninvasive)	73
5	ICU (ventilated)	15
5	Died	91
6	Discharged	2294
6	Ward	837
6	Ward (O2)	467
6	HDU/ICU	37
6	HDU/ICU (O2)	25
6	HDU/ICU (noninvasive)	68
6	ICU (ventilated)	11
6	Died	105
7	Discharged	2491
7	Ward	712
7	Ward (O2)	389
7	HDU/ICU	29
7	HDU/ICU (O2)	22
7	HDU/ICU (noninvasive)	62

day	status	n
7	ICU (ventilated)	10
7	Died	121
8	Discharged	2668
8	Ward	592
8	Ward (O2)	327
8	HDU/ICU	28
8	HDU/ICU (O2)	15
8	HDU/ICU (noninvasive)	55
8	ICU (ventilated)	9
8	Died	135
9	Discharged	2800
9	Ward	505
9	Ward (O2)	278
9	HDU/ICU	23
9	HDU/ICU (O2)	13
9	HDU/ICU (noninvasive)	46
9	ICU (ventilated)	7
9	Died	152
10	Discharged	2909
10	Ward	430
10	Ward (O2)	235
10	HDU/ICU	20
10	HDU/ICU (O2)	11
10	HDU/ICU (noninvasive)	40
10	ICU (ventilated)	7
10	Died	169

Table for figure 7B

day	status	n
1	Discharged	127
1	Ward	791
1	Ward (O2)	403
1	HDU/ICU	25

day	status	n
1	HDU/ICU (O2)	10
1	HDU/ICU (noninvasive)	33
1	ICU (ventilated)	9
1	Died	6
2	Discharged	311
2	Ward	486
2	Ward (O2)	255
2	HDU/ICU	14
2	HDU/ICU (O2)	4
2	HDU/ICU (noninvasive)	22
2	ICU (ventilated)	3
2	Died	13
3	Discharged	432
3	Ward	370
3	Ward (O2)	212
3	HDU/ICU	14
3	HDU/ICU (O2)	5
3	HDU/ICU (noninvasive)	23
3	ICU (ventilated)	2
3	Died	15
4	Discharged	560
4	Ward	273
4	Ward (O2)	174
4	HDU/ICU	14
4	HDU/ICU (O2)	5
4	HDU/ICU (noninvasive)	22
4	ICU (ventilated)	1
4	Died	18
5	Discharged	645
5	Ward	206
5	Ward (O2)	148
5	HDU/ICU	13

day	status	n
5	HDU/ICU (O2)	5
5	HDU/ICU (noninvasive)	22
5	ICU (ventilated)	1
5	Died	25
6	Discharged	720
6	Ward	156
6	Ward (O2)	118
6	HDU/ICU	13
6	HDU/ICU (O2)	5
6	HDU/ICU (noninvasive)	21
6	ICU (ventilated)	1
6	Died	29
7	Discharged	780
7	Ward	129
7	Ward (O2)	91
7	HDU/ICU	8
7	HDU/ICU (O2)	5
7	HDU/ICU (noninvasive)	19
7	ICU (ventilated)	1
7	Died	30
8	Discharged	825
8	Ward	98
8	Ward (O2)	77
8	HDU/ICU	7
8	HDU/ICU (O2)	4
8	HDU/ICU (noninvasive)	17
8	ICU (ventilated)	1
8	Died	33
9	Discharged	869
9	Ward	77
9	Ward (O2)	54
9	HDU/ICU	5

day	status	n
9	HDU/ICU (O2)	2
9	HDU/ICU (noninvasive)	14
9	ICU (ventilated)	1
9	Died	39
10	Discharged	902
10	Ward	55
10	Ward (O2)	42
10	HDU/ICU	4
10	HDU/ICU (O2)	1
10	HDU/ICU (noninvasive)	12
10	ICU (ventilated)	1
10	Died	43