



27 July 2021

Year: 2021 Week: 29

In This Issue:

- Key Messages.
- Weekly summary.
- Total contacts.
- Syndromic indicators.
- Notes and caveats.
- Further information.
- Acknowledgements.

Syndromic indicators at a glance:

1: Total out-of-hours contacts:

Daily total number of out-of-hours and unscheduled contacts and 7-day moving average (adjusted for bank holidays).

Key messages

Data to: 25 July 2021

During week 29, GP out of hours contacts for gastroenteritis, diarrhoea and vomiting increased (figures 7-9).

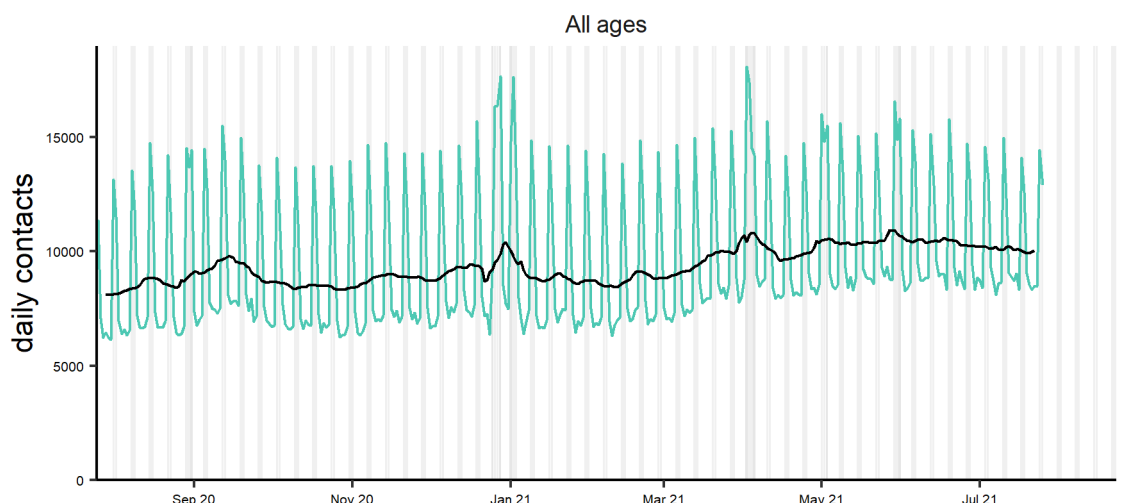
Baselines have been remodelled to account for changes due to COVID-19 and additional, new modelled lines have been added to the charts to represent expected levels if COVID-19 had not occurred.

A Heat-Health Watch system operates in England from 1 June to 15 September each year. As part of the Heatwave Plan for England, the PHE Real-time Syndromic Surveillance team will be routinely monitoring the public health impact of hot weather using syndromic surveillance data during this period. Heat-health watch level (current reporting week): **Level 1/3: Summer preparedness/Heatwave action** <http://www.metoffice.gov.uk/weather/uk/heathealth/>

Key indicator	Current trend*	Level
Acute respiratory infection	no trend	above baseline
Influenza-like illness	decreasing	above baseline
Bronchitis/bronchiolitis	no trend	above baseline
Difficulty breathing/wheeze/asthma	decreasing	above baseline
Pharyngitis	decreasing	above baseline
Gastroenteritis	increasing	above baseline
Diarrhoea	increasing	similar to baseline
Vomiting	increasing	above baseline
Chest pain/myocardial infarction	decreasing	below baseline

*Trend: reports on the trend seen over previous weeks.

Total contacts 26/07/2020 - 25/07/2021



Black line is 7 day moving average adjusted for bank holidays. Grey columns show weekends and bank holidays.

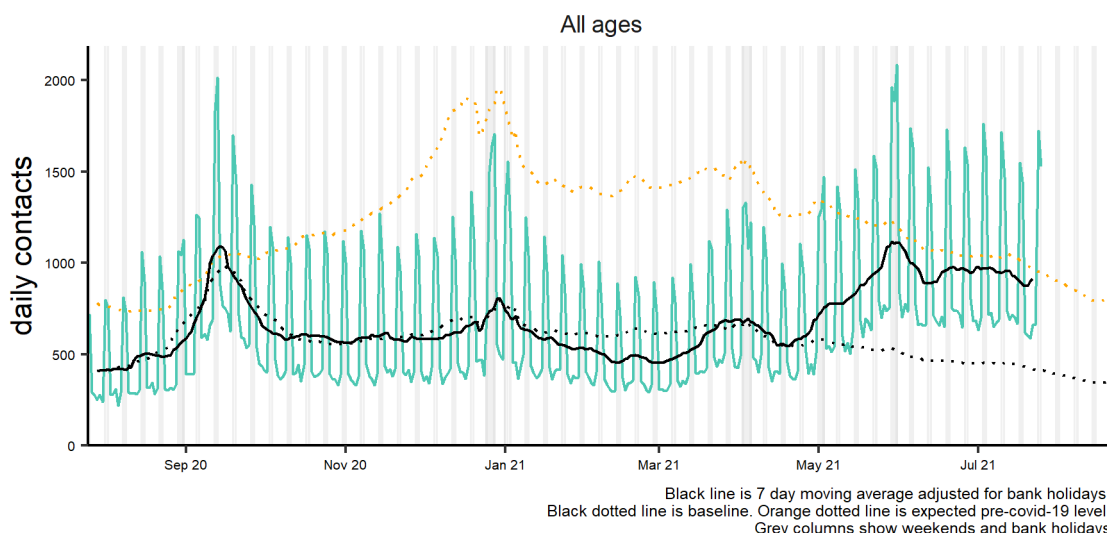
27 July 2021

Year: 2021 Week: 29

2: Acute Respiratory Infection daily contacts.

Number of out-of-hours and unscheduled contacts and 7-day moving average (adjusted for bank holidays).

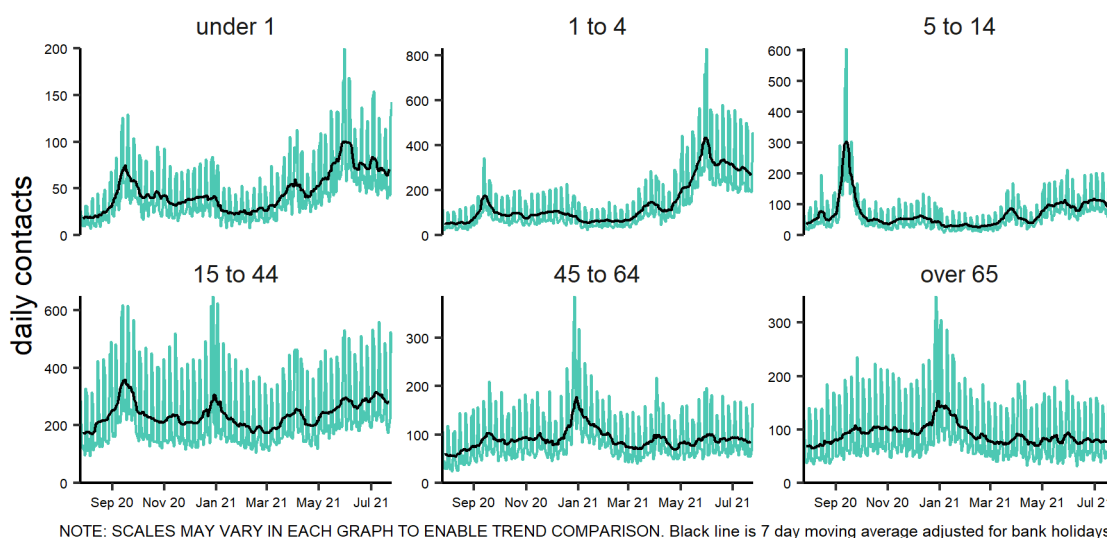
Acute respiratory infection 26/07/2020 - 25/07/2021



2a: Acute Respiratory Infection by age group.

Number of out-of-hours and unscheduled contacts and 7-day moving average (adjusted for bank holidays).

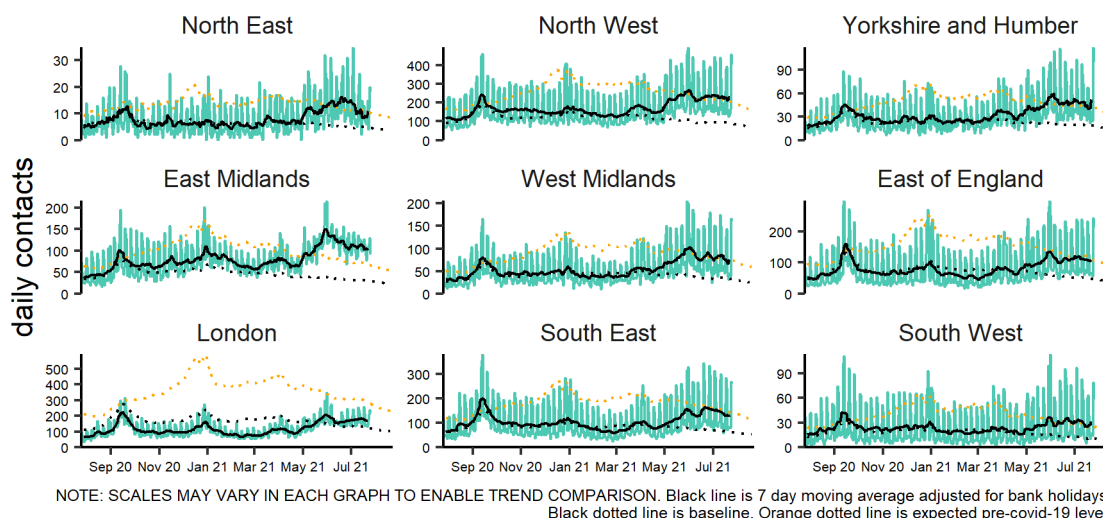
Acute respiratory infection by age group (years) 26/07/2020 - 25/07/2021



2b: Acute Respiratory Infection by PHE centre.

Number of out-of-hours and unscheduled contacts and 7-day moving average (adjusted for bank holidays).

Acute respiratory infection by PHE centre 26/07/2020 - 25/07/2021



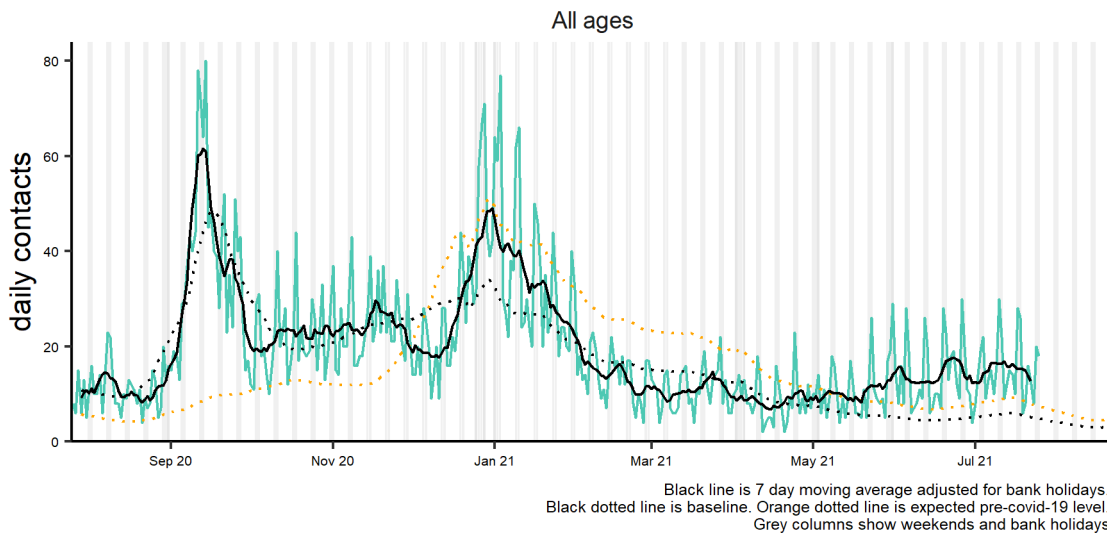
27 July 2021

Year: 2021 Week: 29

3: Influenza-like illness daily contacts.

Number of out-of-hours and unscheduled contacts and 7-day moving average (adjusted for bank holidays).

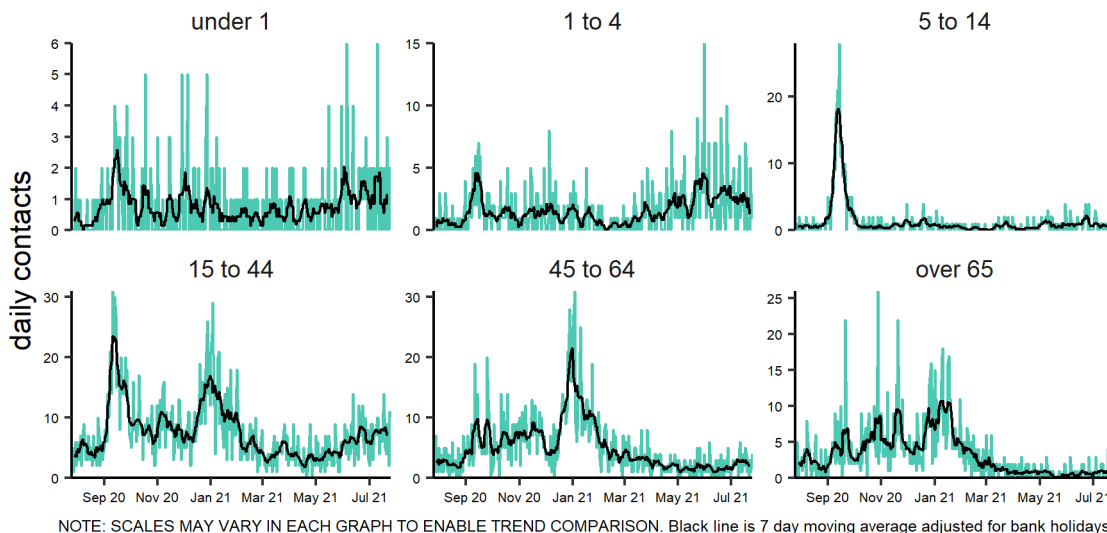
Influenza-like illness 26/07/2020 - 25/07/2021



3a: Influenza-like illness by age group.

Number of out-of-hours and unscheduled contacts and 7-day moving average (adjusted for bank holidays).

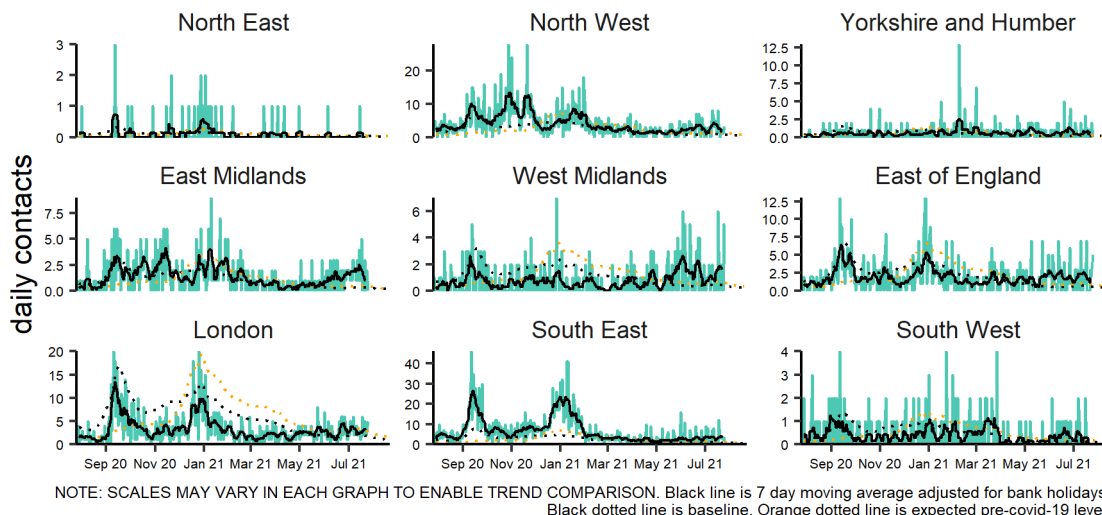
Influenza-like illness by age group (years) 26/07/2020 - 25/07/2021



2b: Influenza-like illness by PHE centre.

Number of out-of-hours and unscheduled contacts and 7-day moving average (adjusted for bank holidays).

Influenza-like illness by PHE centre 26/07/2020 - 25/07/2021



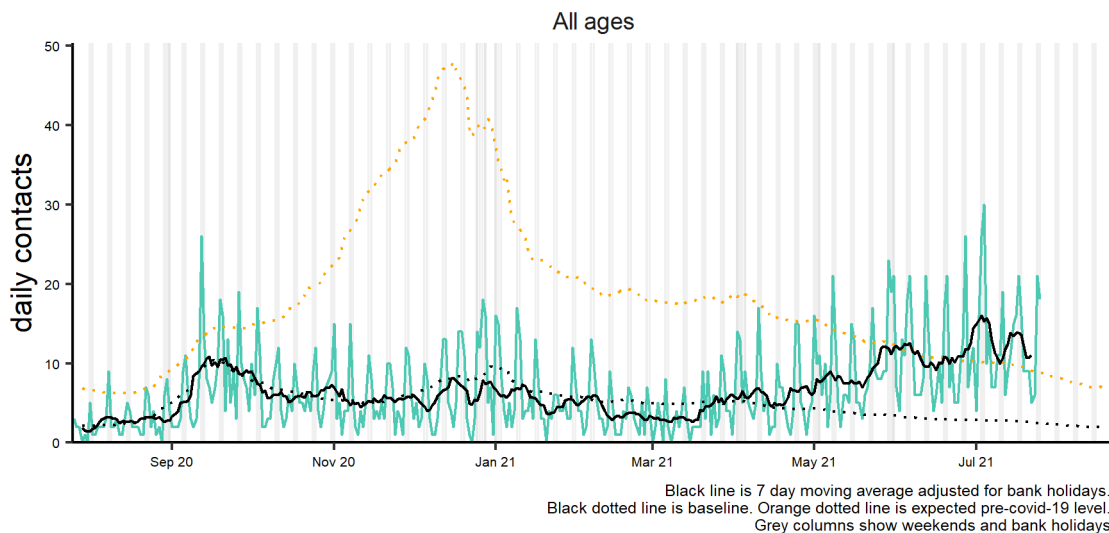
27 July 2021

Year: 2021 Week: 29

**4: Bronchitis/
bronchiolitis daily
contacts.**

Number of out-of-hours and unscheduled contacts and 7-day moving average (adjusted for bank holidays).

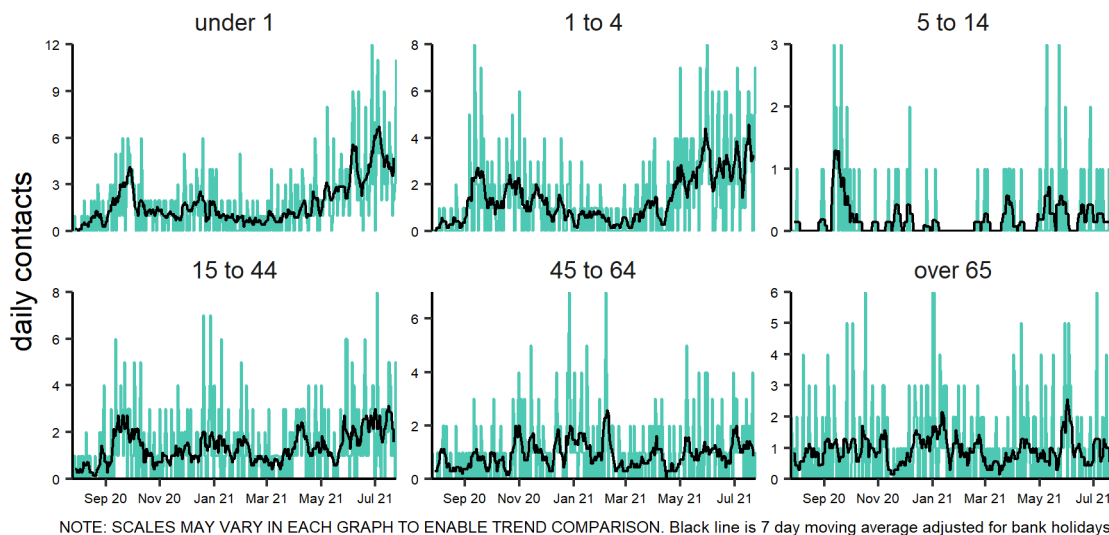
Acute bronchitis 26/07/2020 - 25/07/2021



**4a: Bronchitis/
bronchiolitis daily
contacts by age
group.**

Number of out-of-hours and unscheduled contacts and 7-day moving average (adjusted for bank holidays).

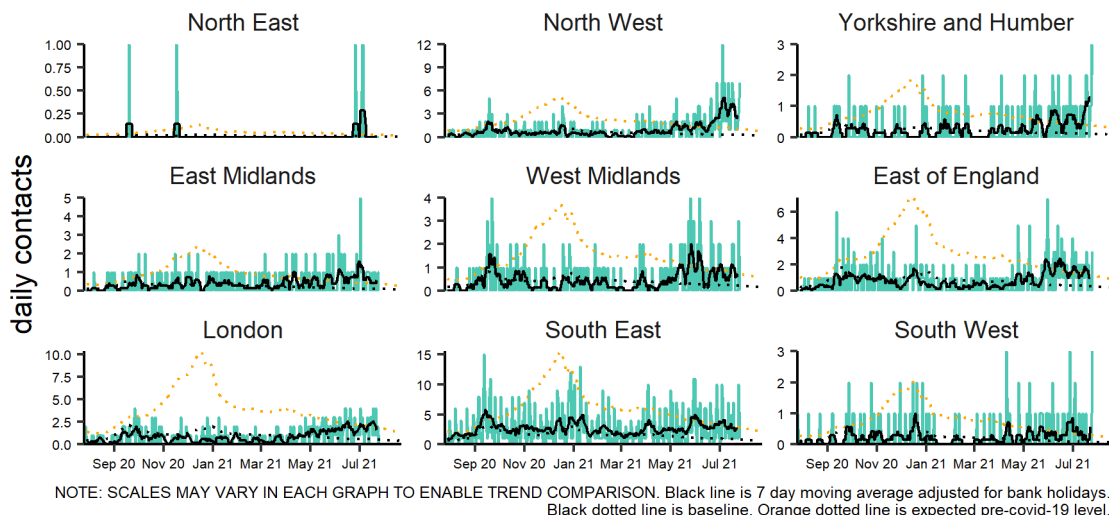
Acute bronchitis by age group (years) 26/07/2020 - 25/07/2021



**4b: Bronchitis/
bronchiolitis daily
contacts by PHE
centre.**

Number of out-of-hours and unscheduled contacts and 7-day moving average (adjusted for bank holidays).

Acute bronchitis by PHE centre 26/07/2020 - 25/07/2021



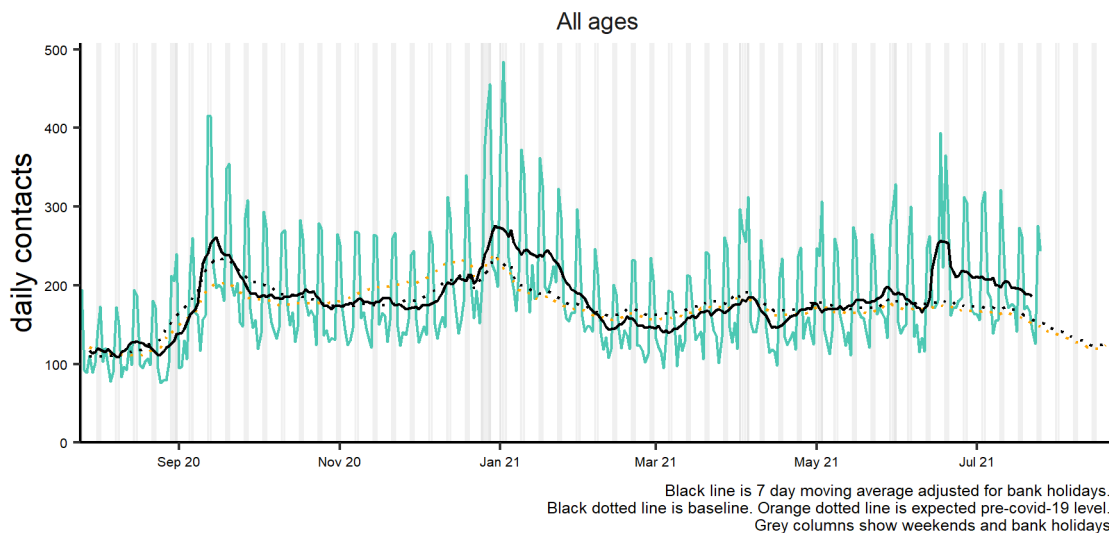
27 July 2021

Year: 2021 Week: 29

**5: Difficulty breathing/
wheeze/asthma daily
contacts.**

Number of out-of-hours and unscheduled contacts and 7-day moving average (adjusted for bank holidays).

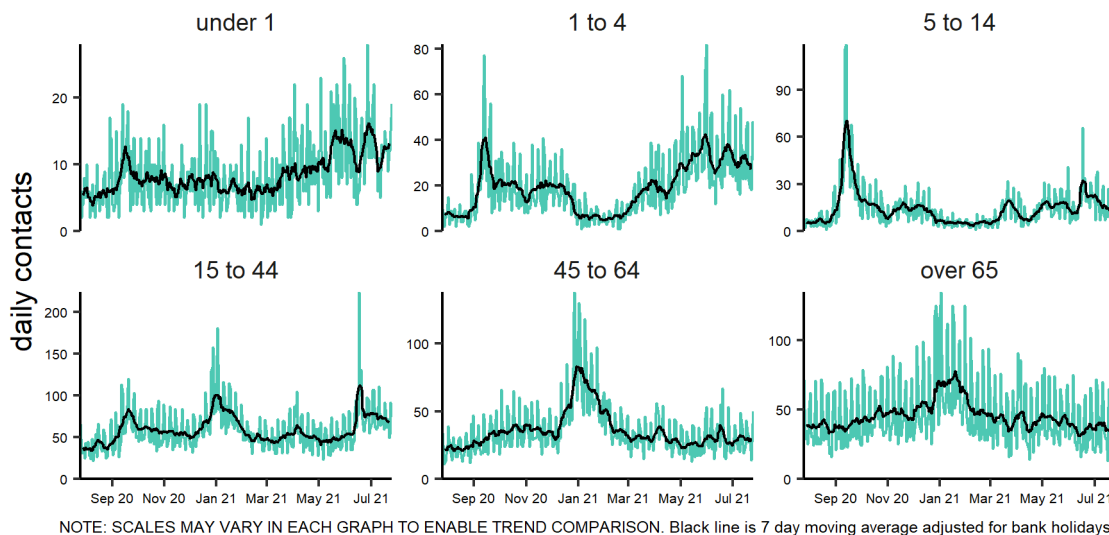
Difficulty breathing, wheeze or asthma 26/07/2020 - 25/07/2021



**5a: Difficulty
breathing/wheeze/
asthma daily
contacts by age
group.**

Number of out-of-hours and unscheduled contacts and 7-day moving average (adjusted for bank holidays).

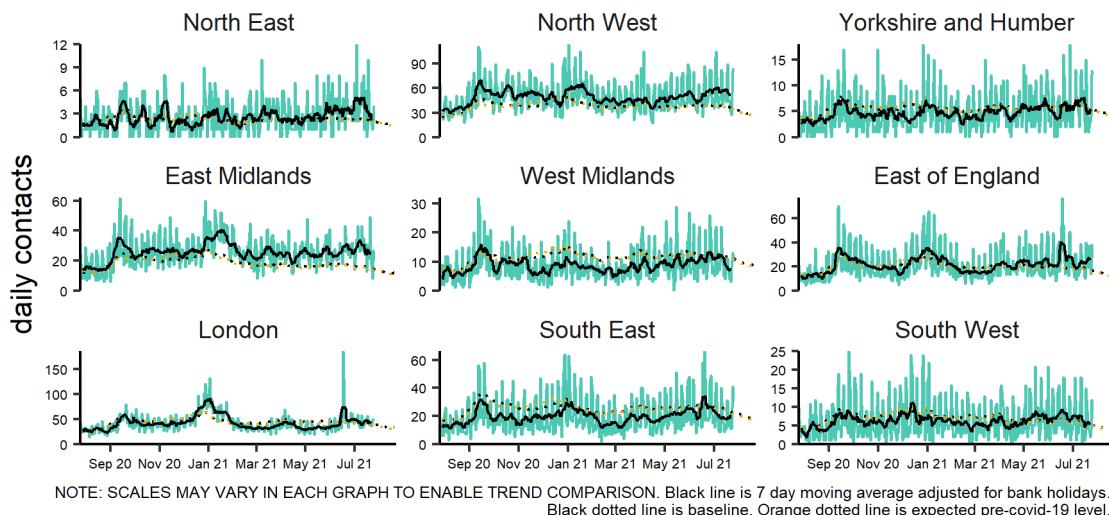
Difficulty breathing, wheeze or asthma by age group (years) 26/07/2020 - 25/07/2021



**5b: Difficulty
breathing/wheeze/
asthma daily
contacts by PHE
centre.**

Number of out-of-hours and unscheduled contacts and 7-day moving average (adjusted for bank holidays).

Difficulty breathing, wheeze or asthma by PHE centre 26/07/2020 - 25/07/2021



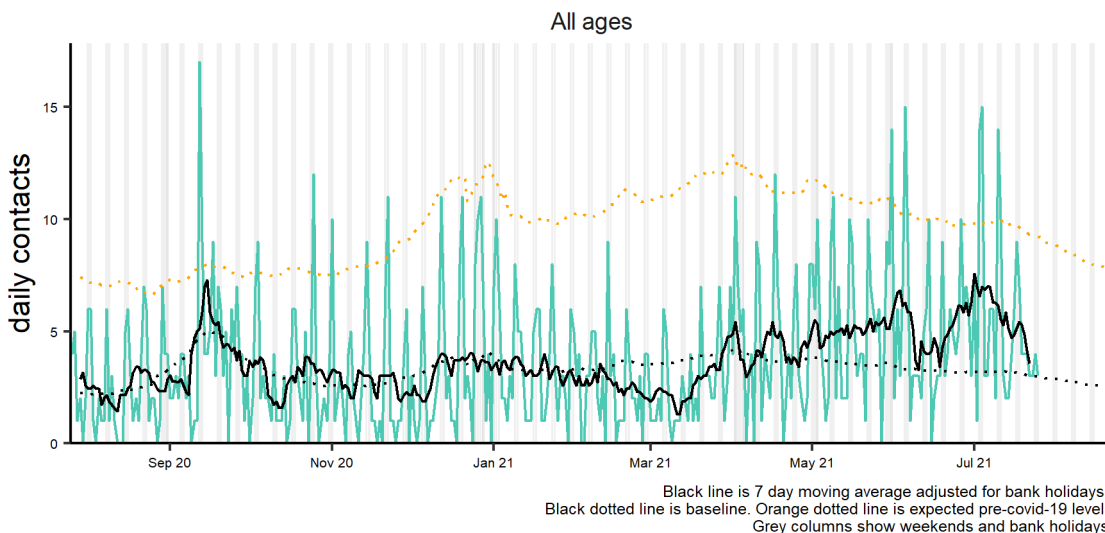
27 July 2021

Year: 2021 Week: 29

6: Acute pharyngitis and persistent sore throat.

Number of out-of-hours and unscheduled contacts and 7-day moving average (adjusted for bank holidays).

Pharyngitis or scarlet fever 26/07/2020 - 25/07/2021

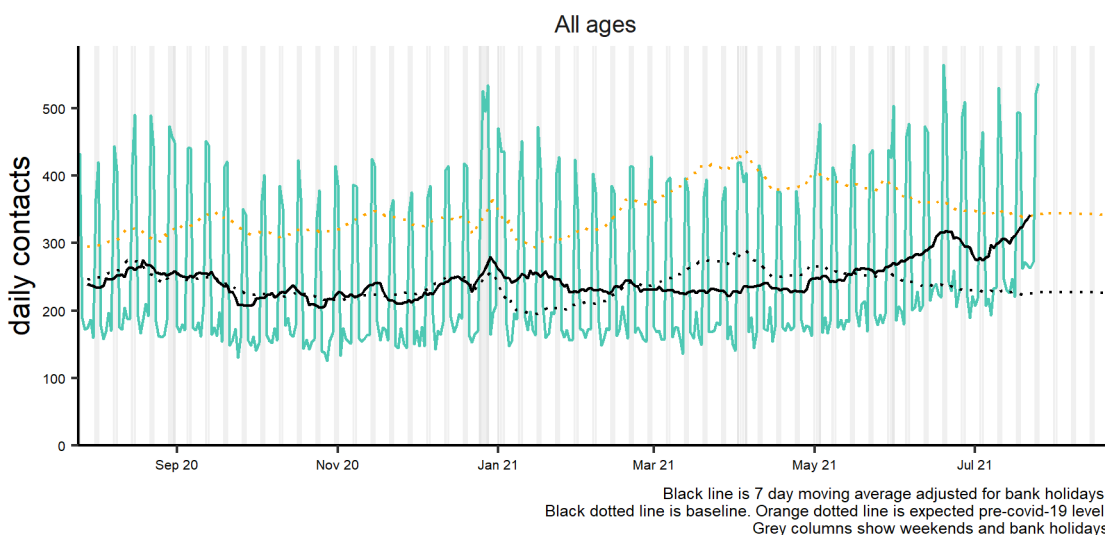


Intentionally left blank

7: Gastroenteritis daily contacts

Number of out-of-hours and unscheduled contacts and 7-day moving average (adjusted for bank holidays).

Gastroenteritis 26/07/2020 - 25/07/2021



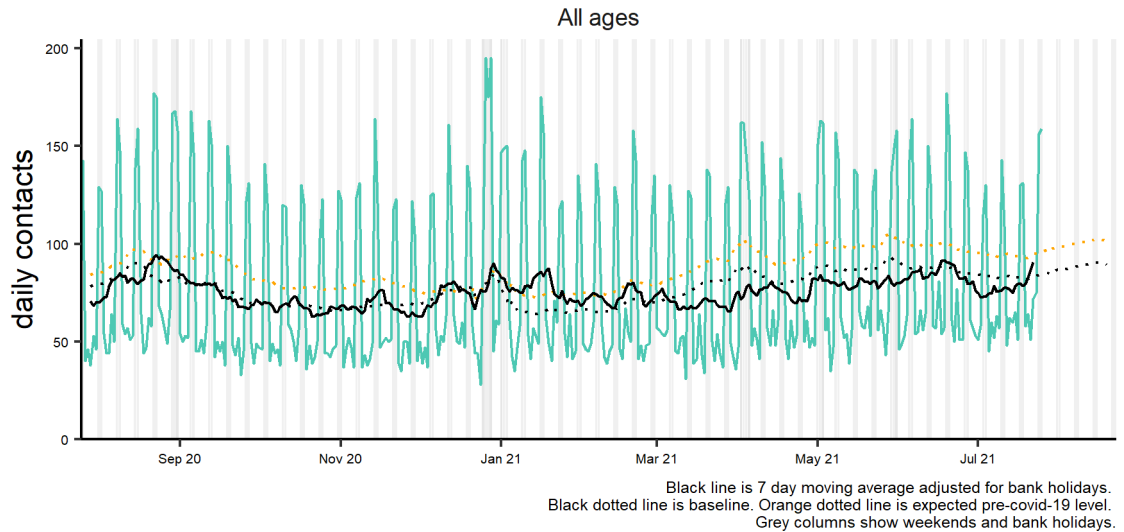
27 July 2021

Year: 2021 Week: 29

8: Diarrhoea daily contacts.

Number of out-of-hours and unscheduled contacts and 7-day moving average (adjusted for bank holidays).

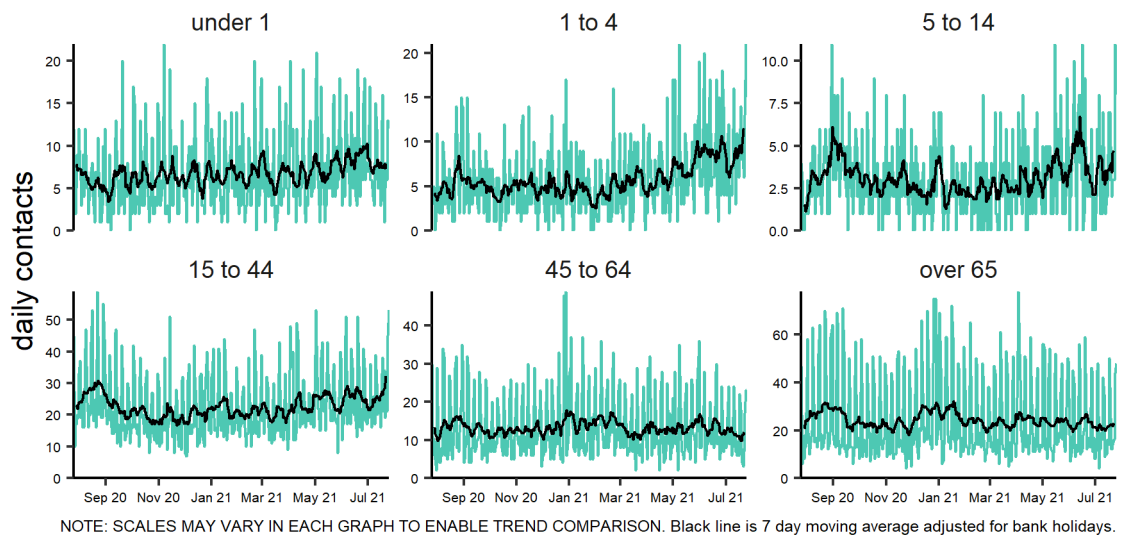
Diarrhoea 26/07/2020 - 25/07/2021



8a: Diarrhoea daily contacts by age group*.

Number of out-of-hours and unscheduled contacts and 7-day moving average (adjusted for bank holidays).

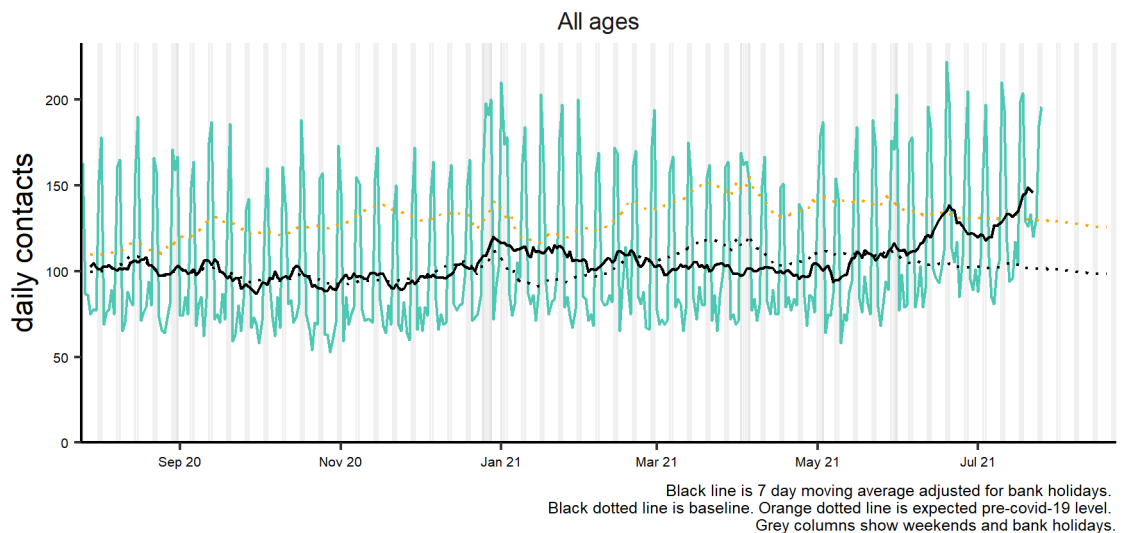
Diarrhoea by age group (years) 26/07/2020 - 25/07/2021



9: Vomiting daily contacts.

Number of out-of-hours and unscheduled contacts and 7-day moving average (adjusted for bank holidays).

Vomiting 26/07/2020 - 25/07/2021



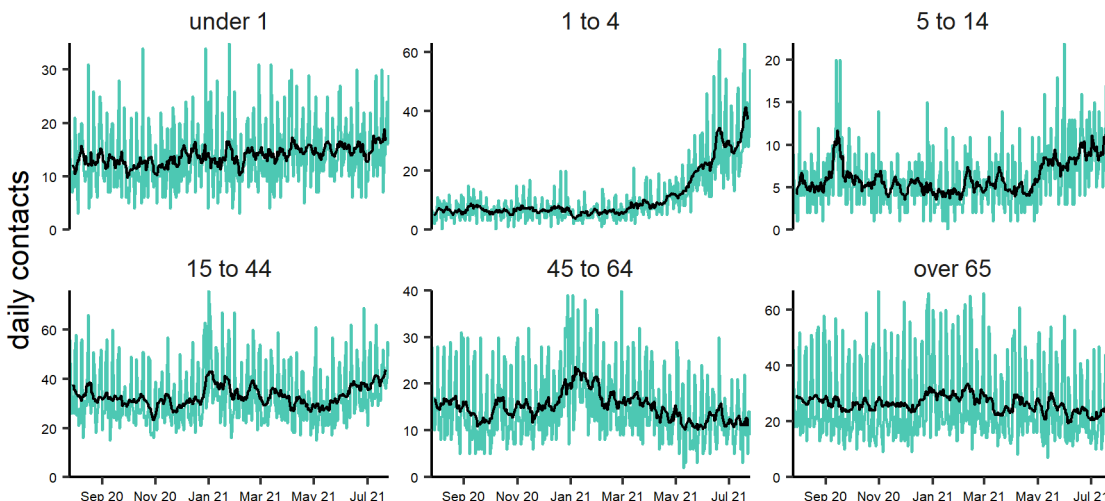
27 July 2021

Year: 2021 Week: 29

9a: Vomiting daily contacts by age group*.

Number of out-of-hours and unscheduled contacts and 7-day moving average (adjusted for bank holidays).

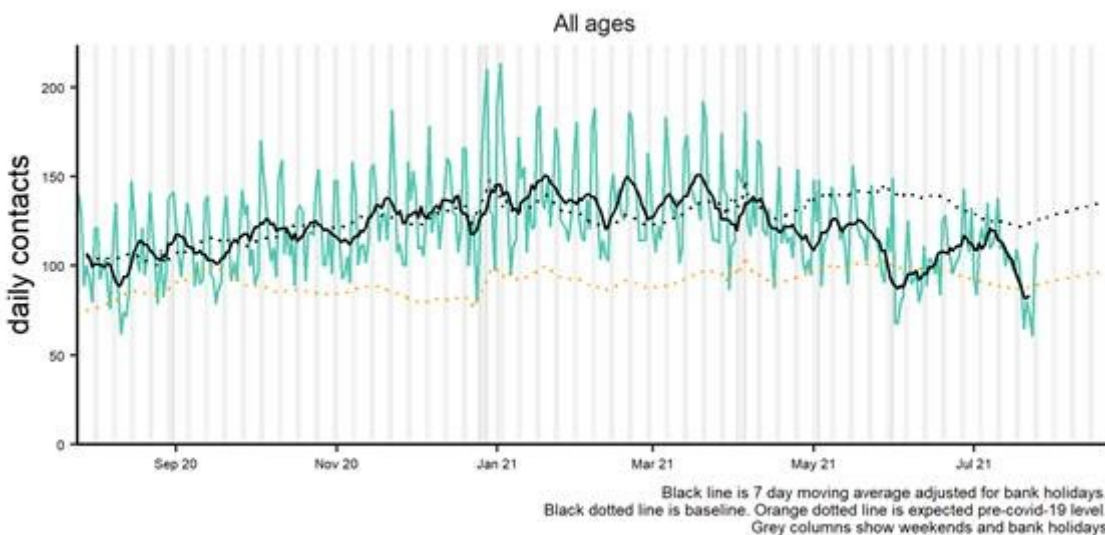
Vomiting by age group (years) 26/07/2020 - 25/07/2021



10: Chest pain/myocardial infarction daily contacts.

Number of out-of-hours and unscheduled contacts and 7-day moving average (adjusted for bank holidays).

Chest pain 26/07/2020 - 25/07/2021



Intentionally left blank

27 July 2021

Year: 2021 Week: 29

Notes and caveats:

- This bulletin presents data from the Public Health England (PHE) GP Out-of-hours\Unscheduled Care Surveillance System (GP OOHSS).
- Fully anonymised data from GP out-of-hours (OOH) and unscheduled care service providers in England are being transferred to PHE for analysis and interpretation by the PHE Real-time Syndromic Surveillance Team (ReSST).
- This system supplements existing PHE syndromic surveillance systems by monitoring data on GP consultations outside of routine surgery opening times (evenings, weekends and bank holidays) and unplanned contacts within NHS primary care.
- The key indicators presented within this bulletin are derived by grouping selected Read coded consultations.
- GP OOH consultation data are analysed on a daily basis to identify national and regional trends. A statistical algorithm underpins each system, routinely identifying activity that has increased significantly or is statistically significantly high for the time of year. Results from these daily analyses are assessed by the ReSST, along with analysis by age group, and anything deemed of public health importance is alerted by the team.
- Baselines represent seasonally expected levels of activity and are constructed from historical data since Nov 2009. They take into account any known substantial changes in data collection, population coverage or reporting practices. Gastroenteritis, diarrhoea and vomiting baselines also account for changes since the introduction of rotavirus vaccine in July 2013.
- From June 2021, charts are presented showing the **number** of OOH contacts. Baselines have been remodelled to account for changes due to COVID-19 and the orange dotted lines are counter-factual models showing seasonally expected levels if covid-19 had not occurred.

Further information:

The GP Out-of-Hours Surveillance System Bulletin can also be downloaded from the PHE Real-time Syndromic Surveillance website which also contains more information about syndromic surveillance:

<https://www.gov.uk/government/collections/syndromic-surveillance-systems-and-analyses>

Acknowledgements:

We are grateful to Advanced and the GP OOH and unscheduled care service providers who have kindly agreed to participate in this system.

Contact ReSST:
syndromic-surveillance@phe.gov.uk

PHE Out-of-Hours/Unscheduled Care Surveillance

Produced by: PHE Real-time Syndromic Surveillance Team
1st Floor, 5 St Philips Place, Birmingham, B3 2PW

Tel: 0344 225 3560 > Option 4 > Option 2

Fax: 0121 236 2215

Web: <https://www.gov.uk/government/collections/syndromic-surveillance-systems-and-analyses>