



Public Health
England

Protecting and improving the nation's health

A data linkage approach to assessing the contribution of hospital-associated SARS-CoV-2 infection to care home outbreaks in England

30 January to 12 October 2020

Addendum July 2021

Contents

Purpose.....	3
Data	4

Purpose

This addendum to the PHE report on ‘Contribution of hospital-associated SARS-CoV-2 infection to care home outbreaks in England’ includes data requested by, and provided to, the chair of the Public Accounts Committee (PAC), following the publication of the original report¹ on the gov.uk website on 27 May 2021. This addendum provides a further breakdown of the data in Table 1 and Figure 1 in the original report according to the two time periods: COVID-19 cases diagnosed from specimens taken between 30 January to 14 April 2020 and 15 April to 12 October 2020 (as requested by PAC).

The data in this addendum should be interpreted in the context of the original report.

¹ Public Health England. 2021. ‘A data linkage approach to assessing the contribution of hospital-associated SARS-CoV-2 infection to care home outbreaks in England, 30 January to 12 October 2020’

Data

Table 1. Laboratory confirmed COVID-19 cases resident in care homes

a) 30 January to 14 April 2020¹

No. cases (%) [†]	No. deaths (%) ^{††}	No. cases part of an outbreak (%)	Total no. outbreaks	No. care homes with outbreaks [^]
8,812 (10.3%)	5,299 (23.9%)	7,205 (81.8%)	2,147	2,129

b) 15 April to 12 October 2020²

No. cases (%) [†]	No. deaths (%) ^{††}	No. cases part of an outbreak (%)	Total no. outbreaks	No. care homes with outbreaks [^]
34,586 (8.1%)	8,492 (45.9%)	28,535 (82.5%)	3,735	3,058

[†] Percentage refers to the proportion of all COVID-19 cases identified as care home residents

^{††}Based on 60-day or cause of death definition. Percentage refers to the proportion of all COVID-19 deaths within this category, who are identified as care home residents

[^]Care homes experiencing outbreaks in both time periods will be included in each period

¹ For the period 30 January to 14 April 2020, data includes 8,812 (20.3%) care home resident cases and 13,791 deaths

² For the period 15 April to 12 October 2020, data includes 34,586 (79.7%) care home resident cases were identified and 8,492 deaths

In response to communications from PAC, the following information was also provided: For the time period prior to 15 April 2020, 39 (1.8%) care home outbreaks of a total of 2,147 outbreaks were identified as potentially seeded by hospital-acquired (HA) infection. From 15 April to 12 October 2020, 58 (1.6%) outbreaks of a total of 3,735 care home outbreaks (1.6%) were potentially seeded by hospital-acquired (HA) infection.

Figure 1a. Data flow identifying care home COVID-19 outbreaks potentially seeded from hospital associated cases, 30 January to 14 April 2020

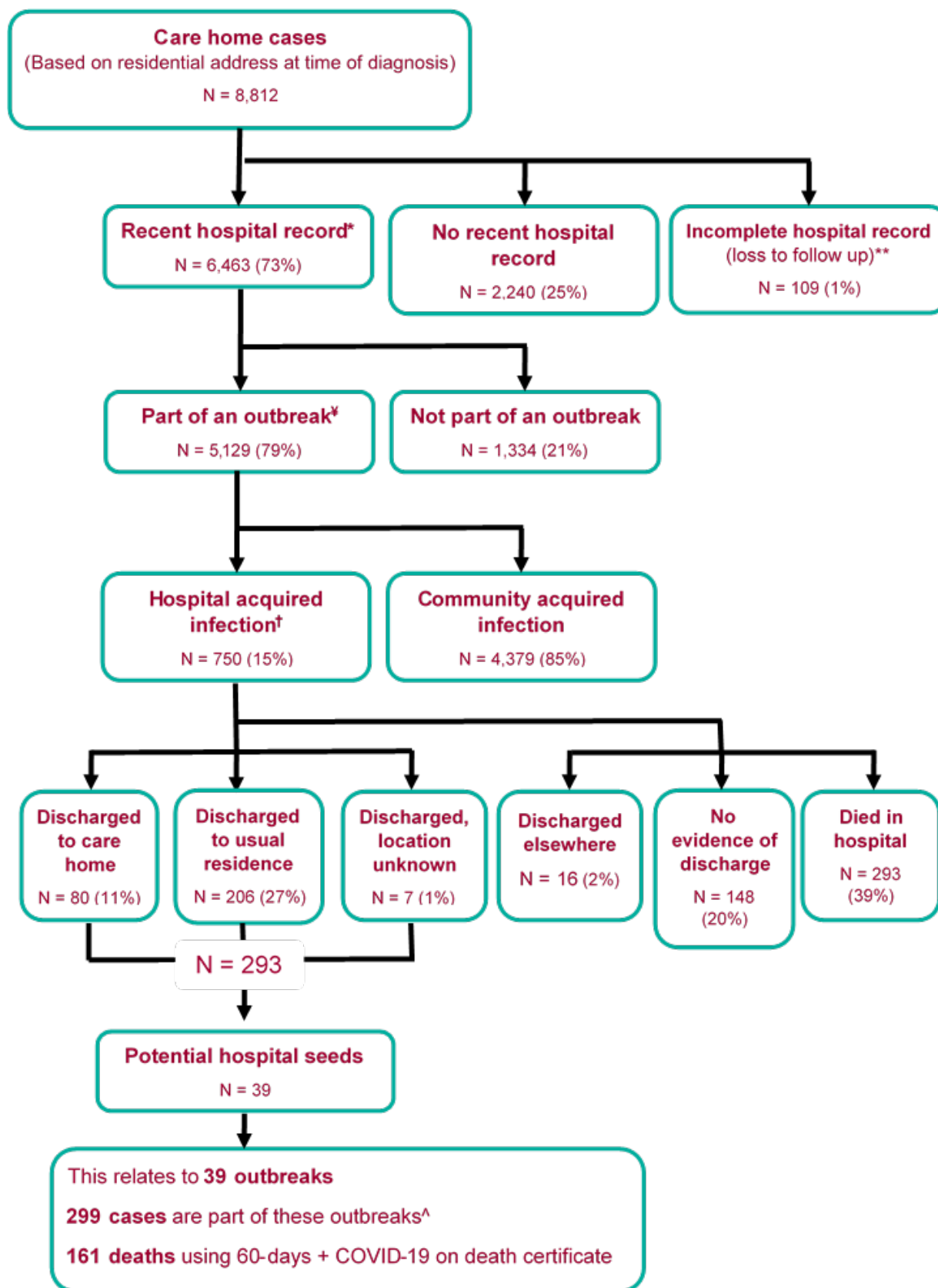
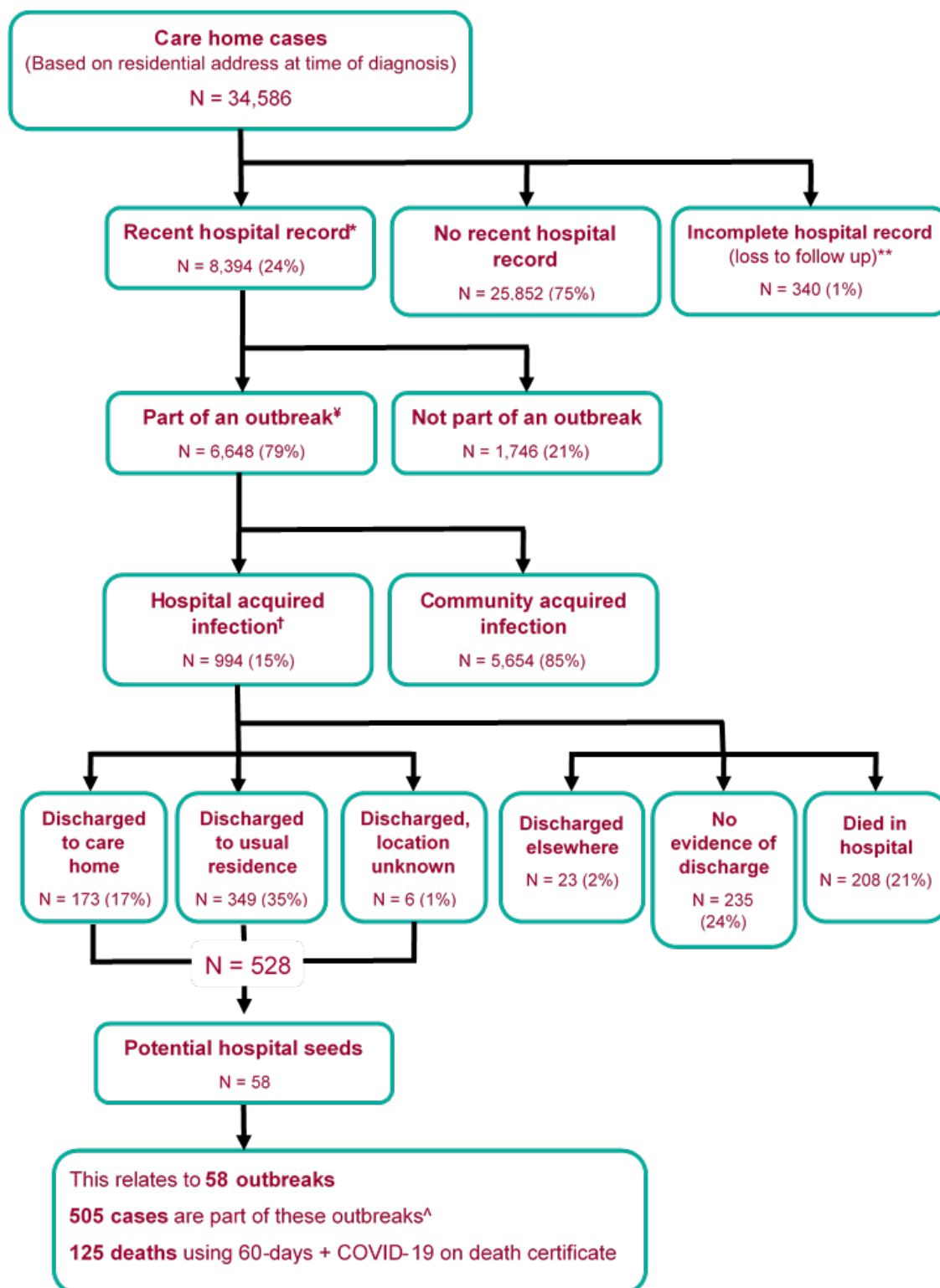


Figure 1b. Data flow identifying care home COVID-19 outbreaks potentially seeded from hospital associated cases, 15 April to 12 October 2020



All the data in this addendum should be interpreted in the context of the main report.

About Public Health England

Public Health England exists to protect and improve the nation's health and wellbeing, and reduce health inequalities. We do this through world-leading science, research, knowledge and intelligence, advocacy, partnerships and the delivery of specialist public health services. We are an executive agency of the Department of Health and Social Care, and a distinct delivery organisation with operational autonomy. We provide government, local government, the NHS, Parliament, industry and the public with evidence-based professional, scientific and delivery expertise and support.

Public Health England
Wellington House
133-155 Waterloo Road
London SE1 8UG
Tel: 020 7654 8000

Website: www.gov.uk/phe

Twitter: [@PHE_uk](https://twitter.com/PHE_uk)

Facebook: www.facebook.com/PublicHealthEngland

© Crown copyright 2021

Version 1.0

Prepared by: Epi Cell, Public Health England

OGL

You may re-use this information (excluding logos) free of charge in any format or medium, under the terms of the Open Government Licence v3.0. To view this licence, visit [OGL](https://www.ogil.io). Where we have identified any third party copyright information you will need to obtain permission from the copyright holders concerned.

Published: July 2021

Gateway number: GOV-8008



PHE supports the UN Sustainable
Development Goals

