

Dynamic CO-CIN report to SAGE and NERVTAG

Executive summary

Includes patients admitted on or after 01 May 2021

There are 2908 patients included in CO-CIN. Of these, 167 patient(s) have died and 434 required ICU. 1921 have been discharged home.

Admission

Figure 1

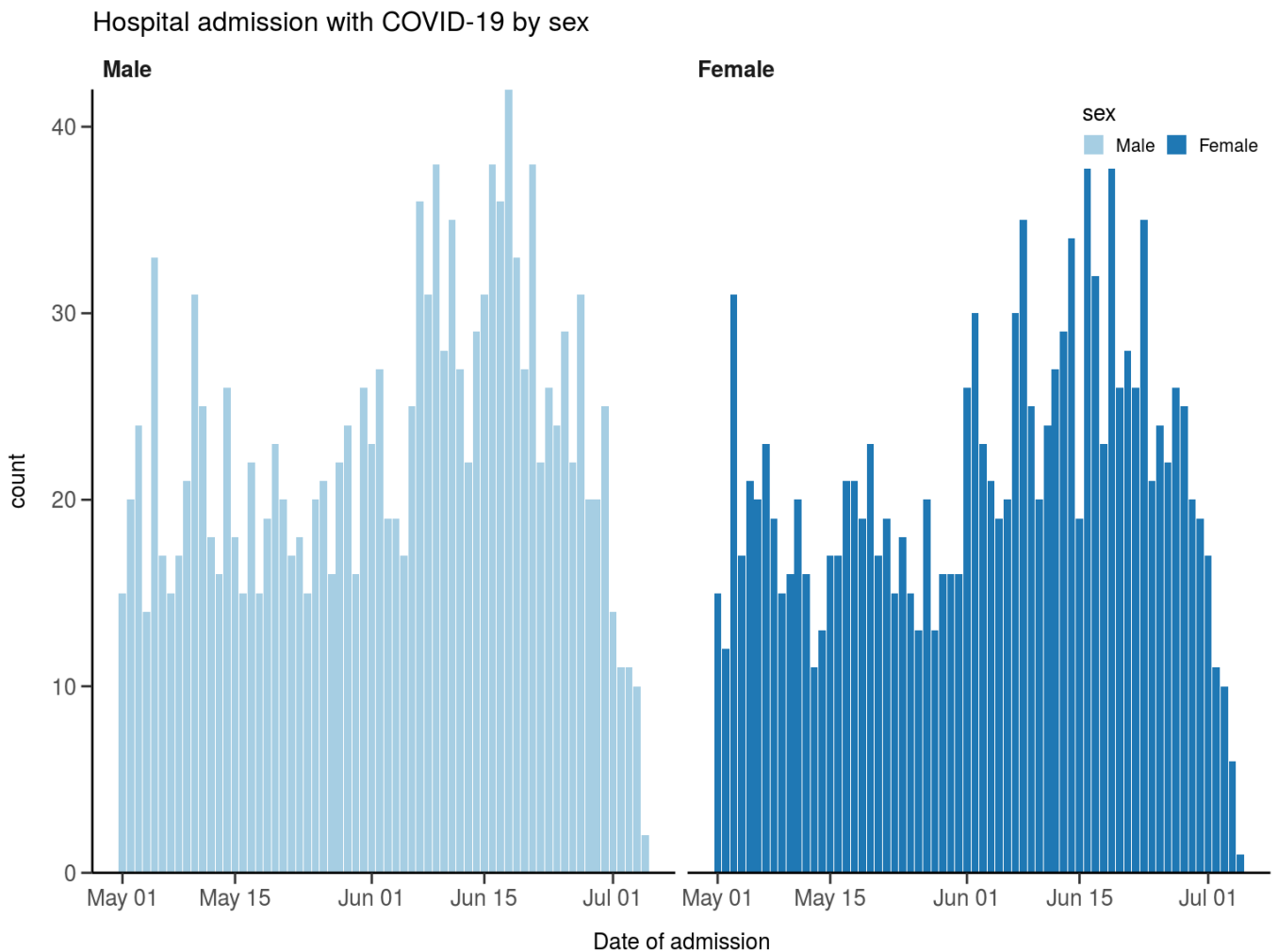
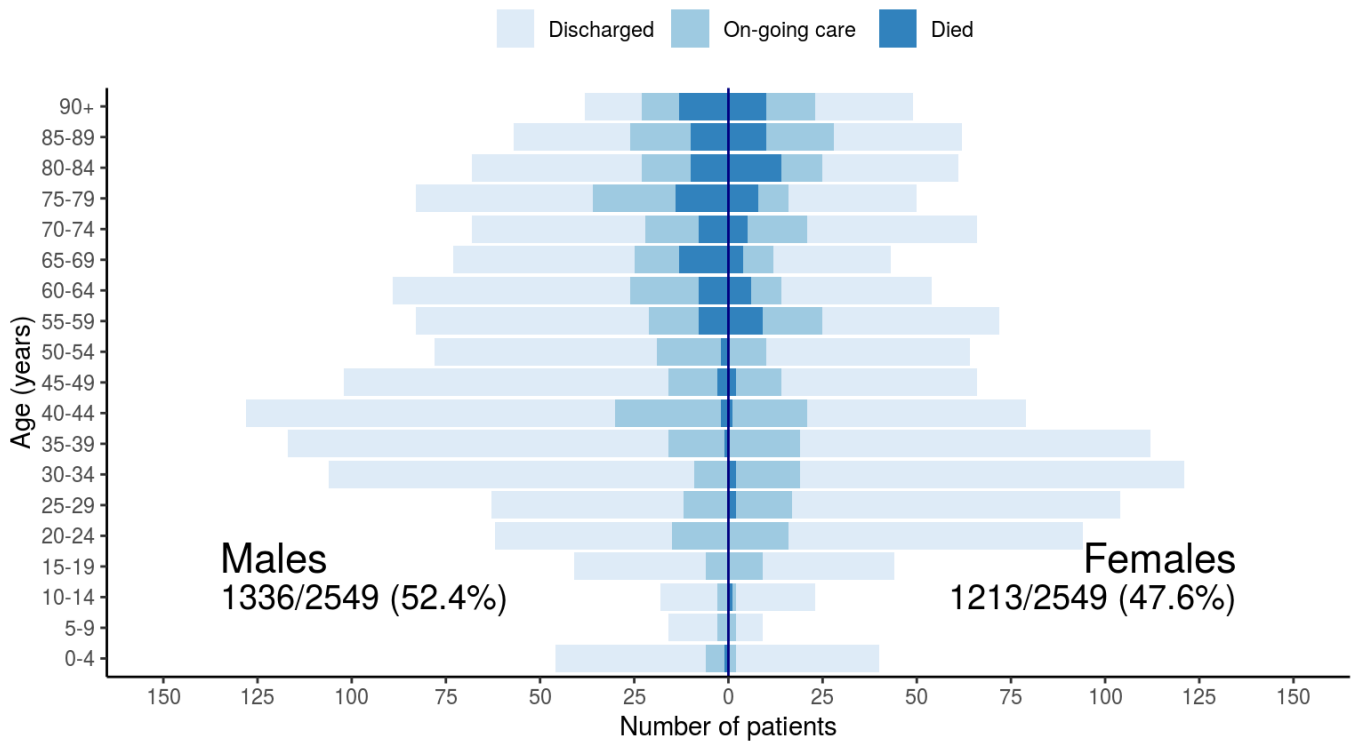


Figure 2

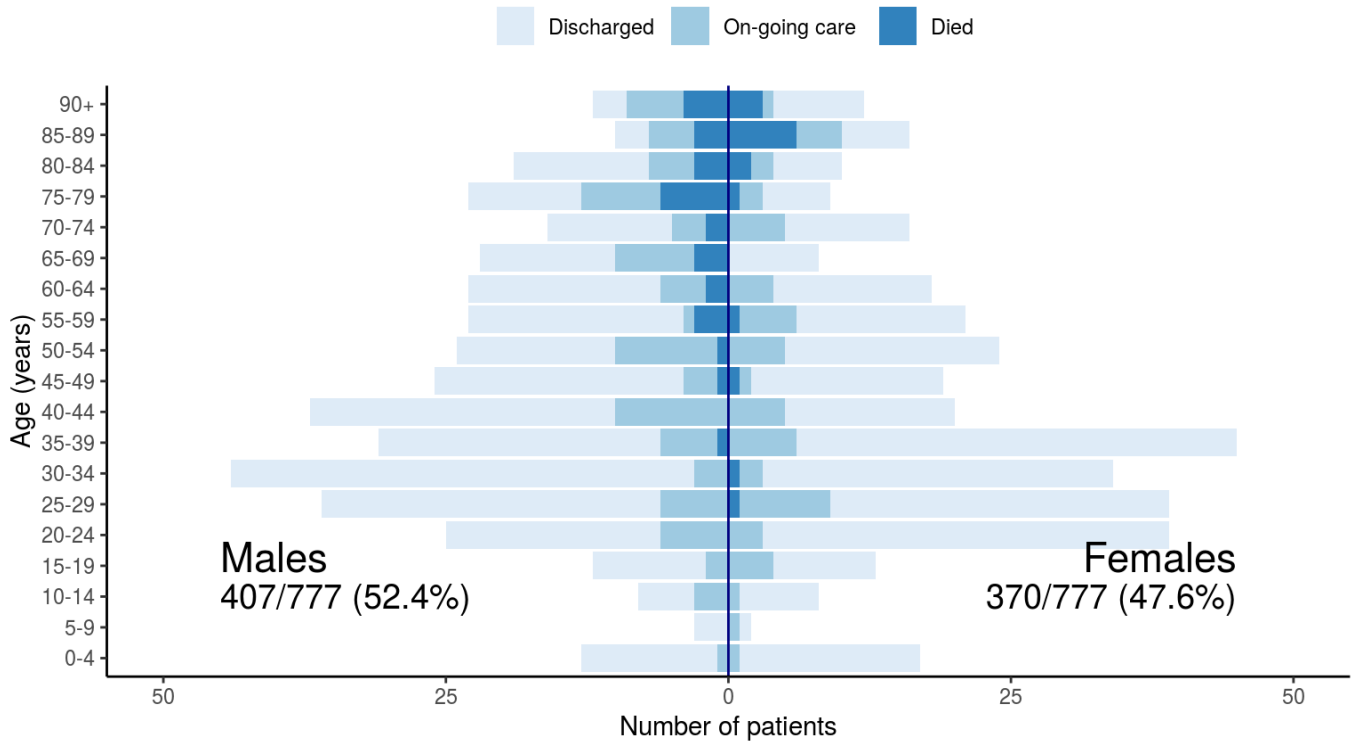
Patients with outcome stratified by age, and sex

All



Patients with outcome stratified by age, and sex

Admitted >=14 days and <=28 days ago



Patient flow

Figure 7A - All patients

N = 2747

Patient status by day
Cumulative for discharge/death

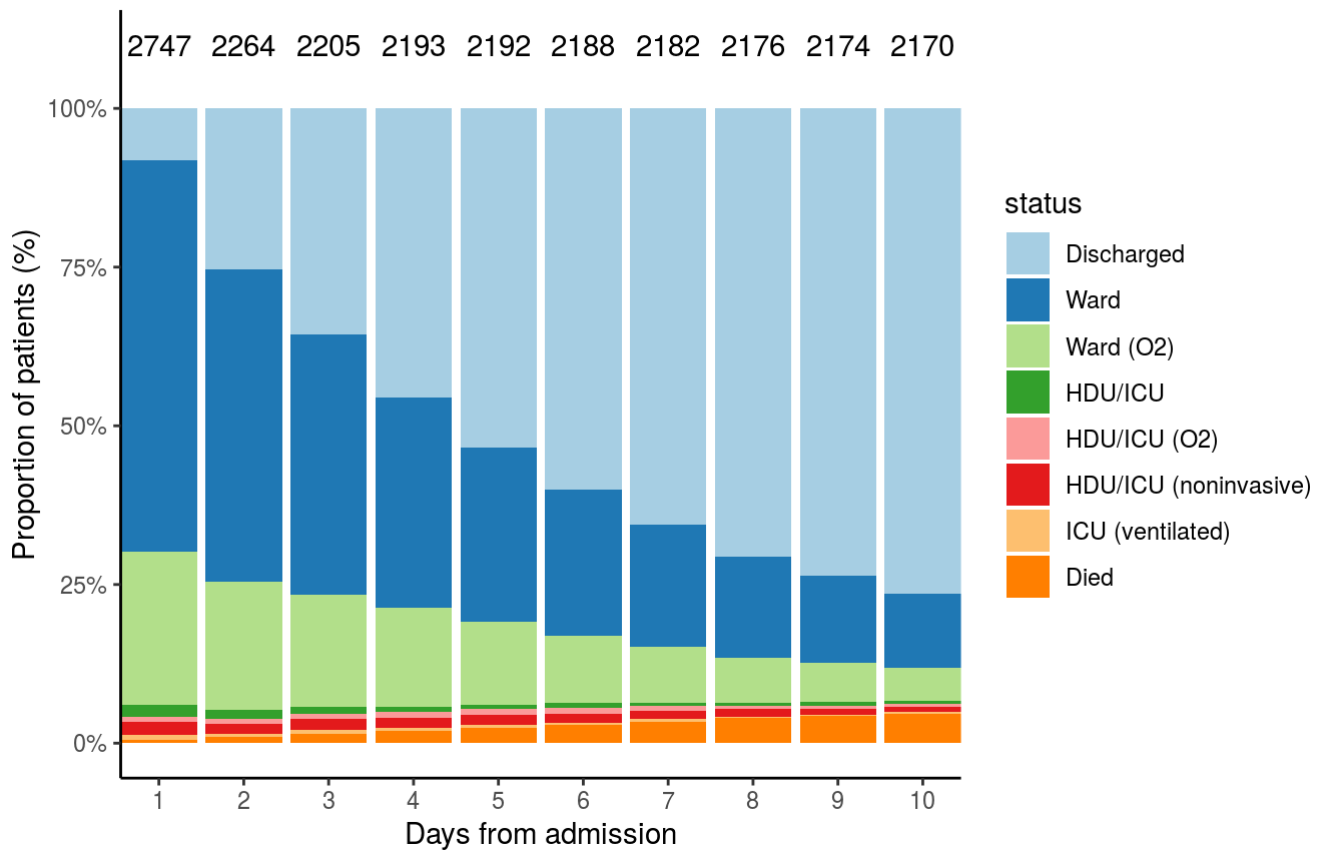
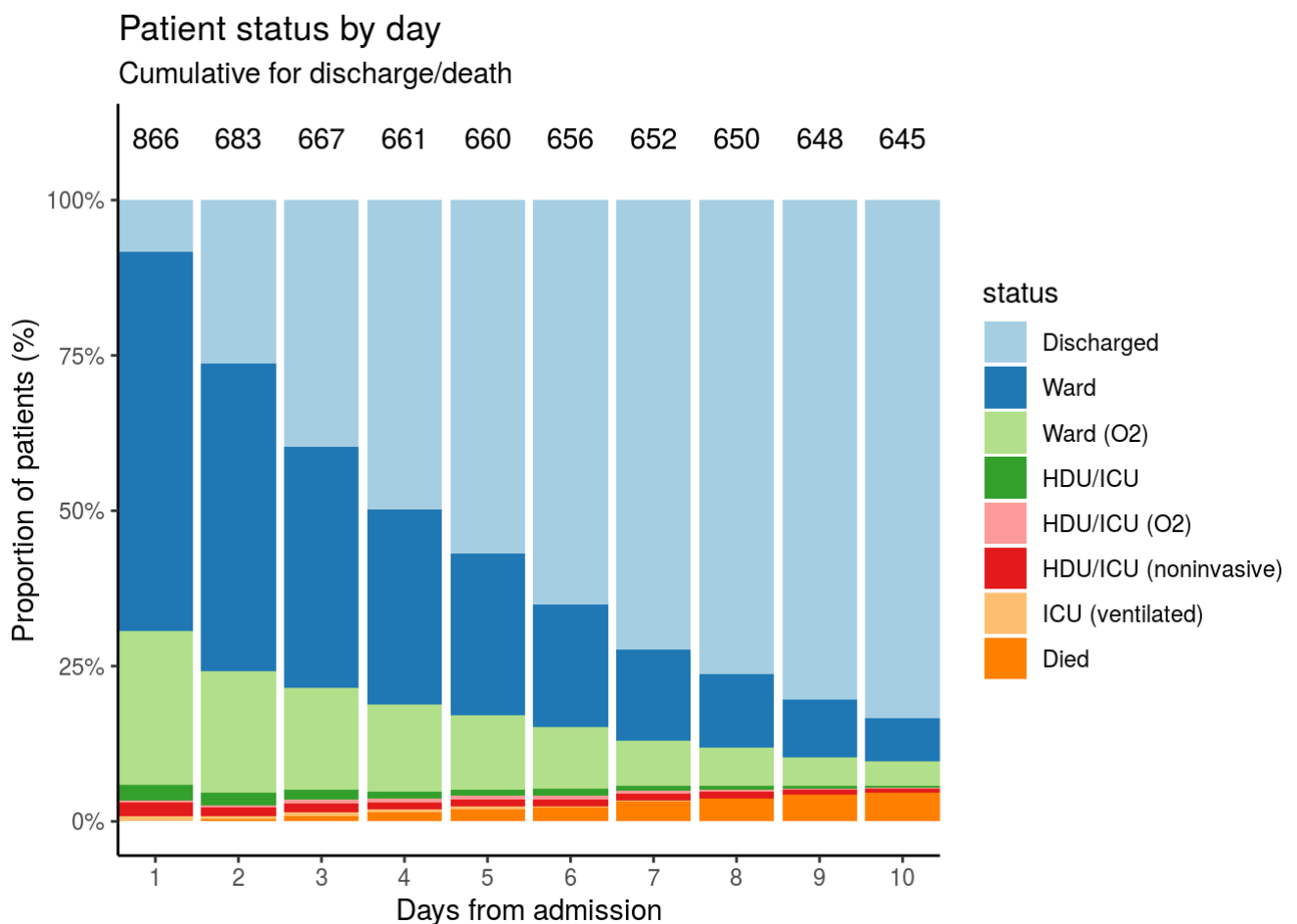


Figure 7B - Patients admitted ≥ 14 days and ≤ 28 days ago

N = 866



Oxygen requirement

Figure 8A - All patients

N = 2620

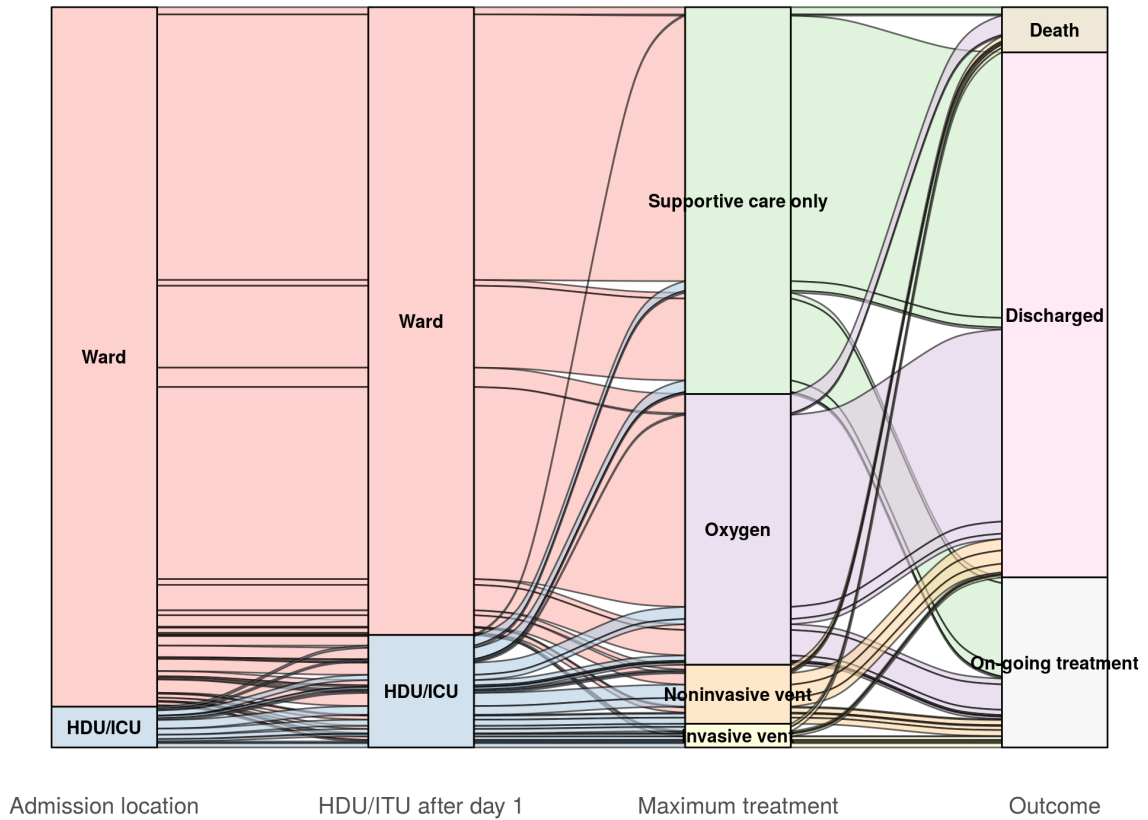


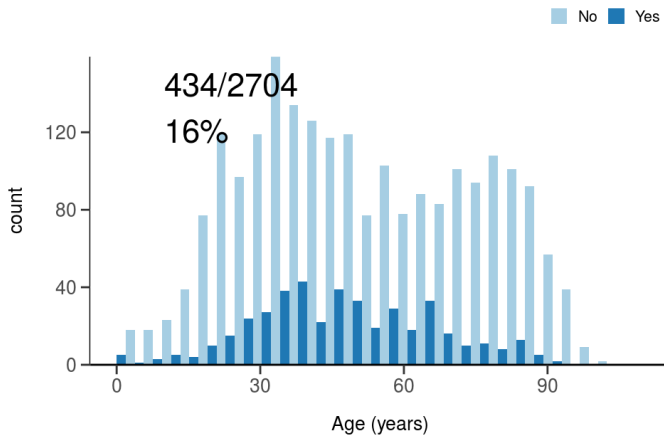
Figure 8B - Patients admitted ≥ 14 days and ≤ 28 days ago

N = 821

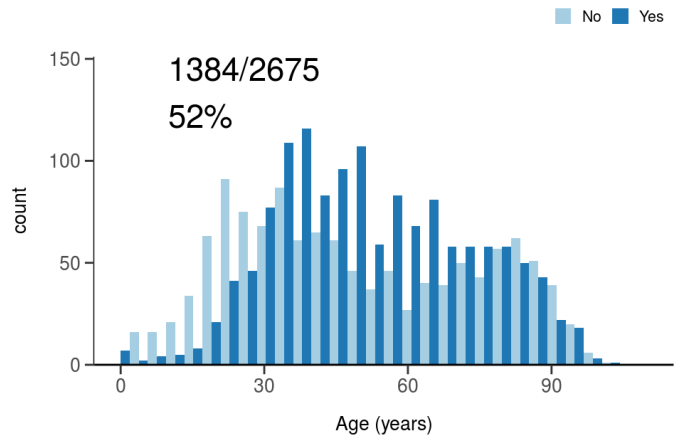
Treatment

Figure 10

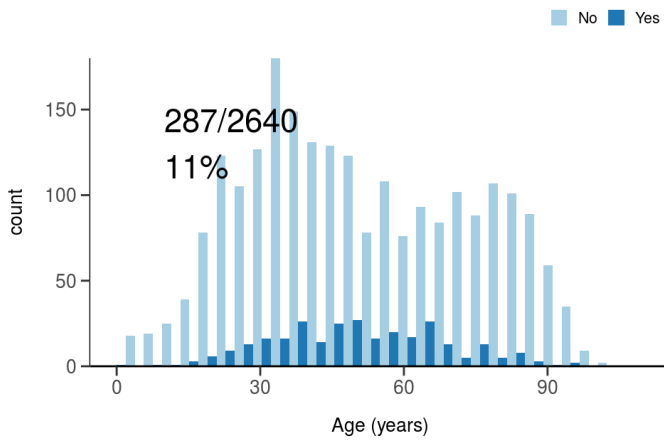
ICU/HDU admission
Figure 10A



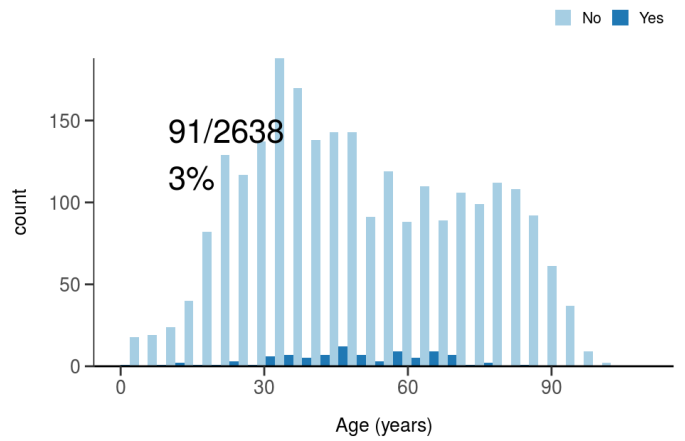
High flow oxygen
Figure 10B



Noninvasive ventilation
Figure 10C



Invasive ventilation
Figure 10D

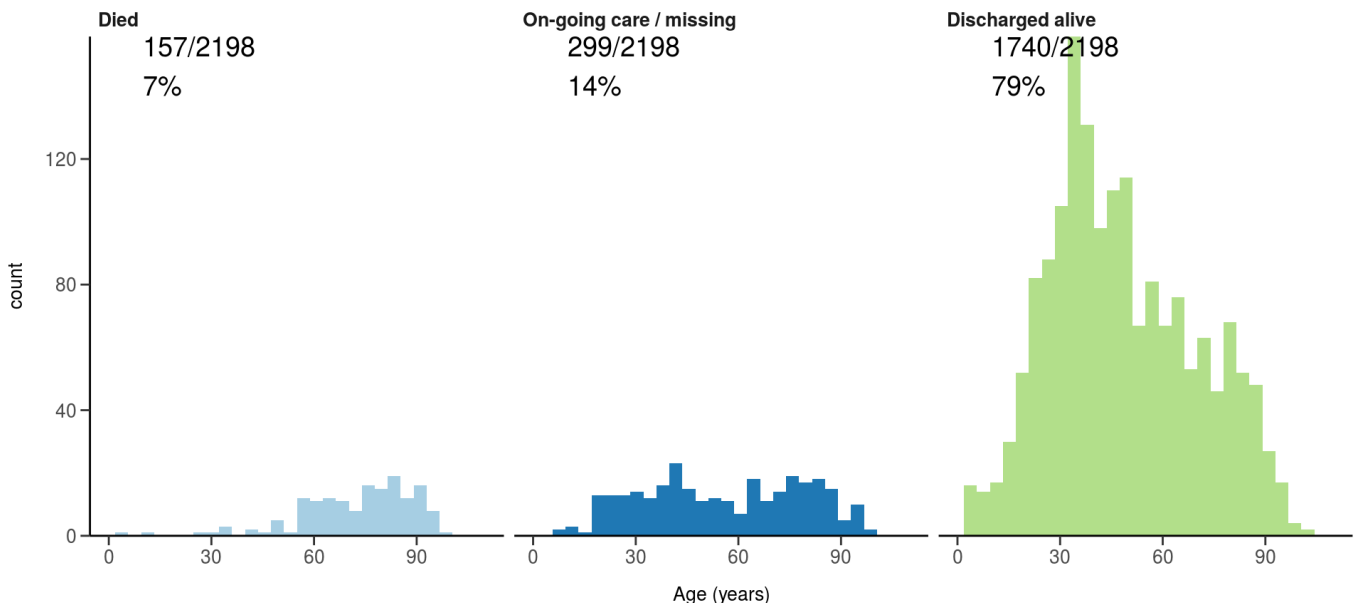


Status in patients admitted ≥ 14 days from today

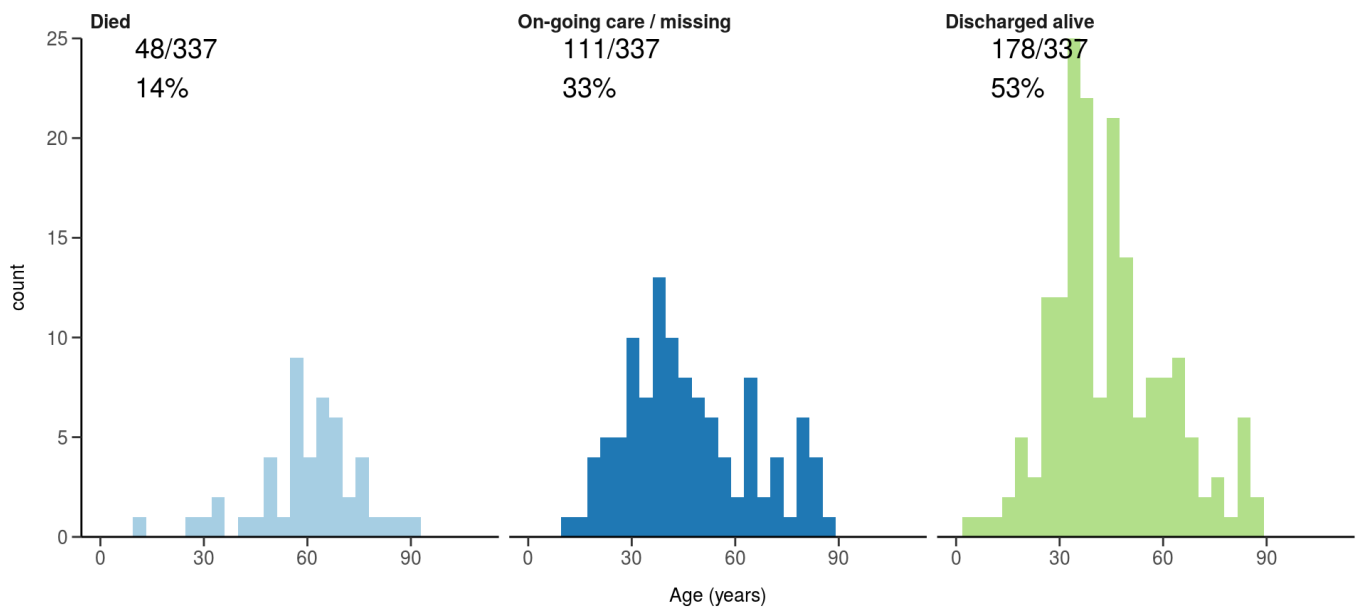
Figure 11

Where outcome is not reported, on-going care is assumed.

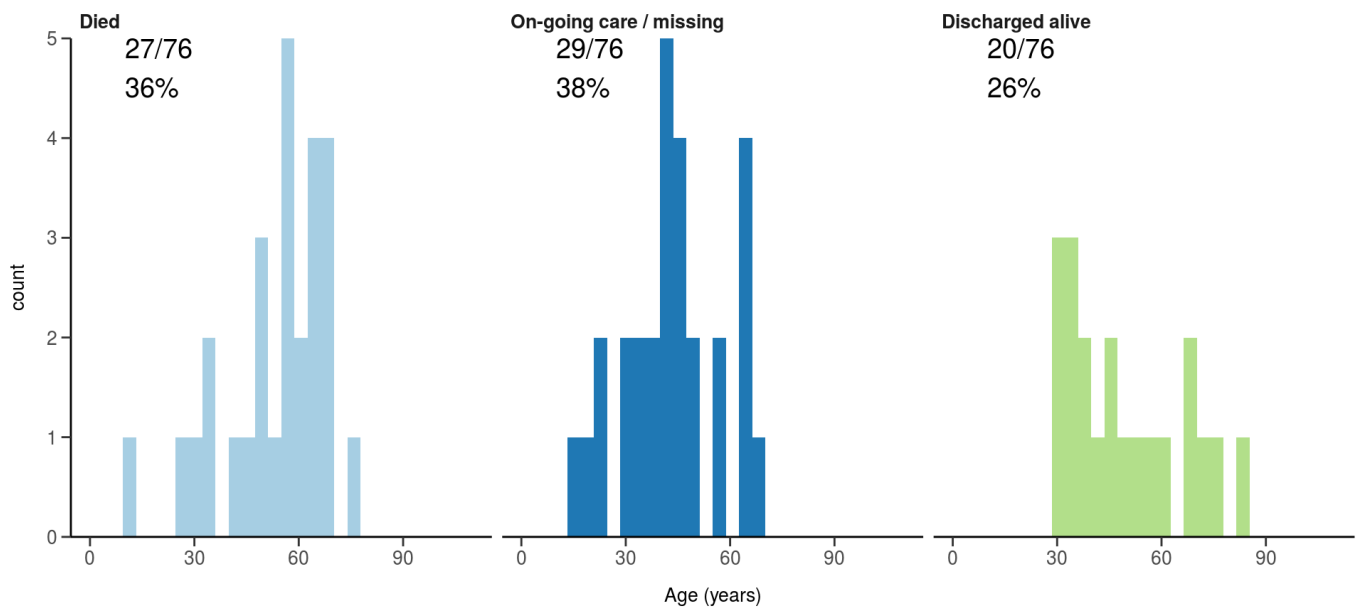
All: status in patients admitted ≥ 14 days ago
Figure 11A



ICU/HDU admissions: status in patients admitted ≥ 14 days ago
Figure 11B



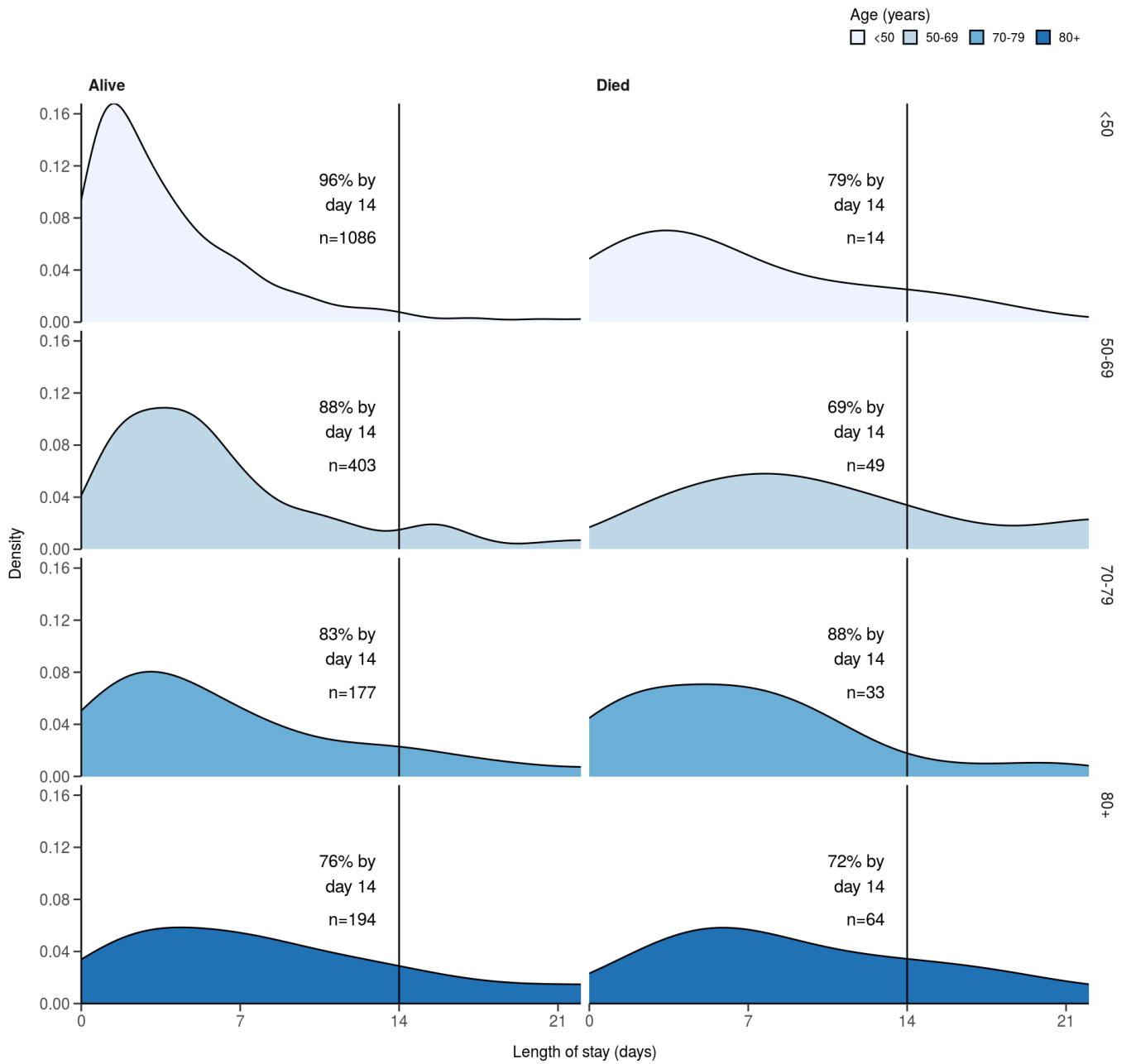
Invasive ventilation: status in patients admitted ≥ 14 days ago
Figure 11c



Length of stay stratified by age

Figure 12

Length of stay stratified by age and mortality
 Proportion who reach outcome by day 14 shown



Data

Table for figure 2A

age.factor	sex	status	n
0-4	Male	Discharged	40
0-4	Male	On-going care	5
0-4	Male	Died	1
0-4	Female	Discharged	38
0-4	Female	On-going care	2
5-9	Male	Discharged	13
5-9	Male	On-going care	3

age.factor	sex	status	n
5-9	Female	Discharged	7
5-9	Female	On-going care	2
10-14	Male	Discharged	15
10-14	Male	On-going care	3
10-14	Female	Discharged	21
10-14	Female	On-going care	1
10-14	Female	Died	1
15-19	Male	Discharged	35
15-19	Male	On-going care	6
15-19	Female	Discharged	35
15-19	Female	On-going care	9
20-24	Male	Discharged	47
20-24	Male	On-going care	15
20-24	Female	Discharged	78
20-24	Female	On-going care	16
25-29	Male	Discharged	51
25-29	Male	On-going care	12
25-29	Female	Discharged	87
25-29	Female	On-going care	15
25-29	Female	Died	2
30-34	Male	Discharged	97
30-34	Male	On-going care	9
30-34	Female	Discharged	102
30-34	Female	On-going care	17
30-34	Female	Died	2
35-39	Male	Discharged	101
35-39	Male	On-going care	15
35-39	Male	Died	1
35-39	Female	Discharged	93
35-39	Female	On-going care	19
40-44	Male	Discharged	98
40-44	Male	On-going care	28

age.factor	sex	status	n
40-44	Male	Died	2
40-44	Female	Discharged	58
40-44	Female	On-going care	20
40-44	Female	Died	1
45-49	Male	Discharged	86
45-49	Male	On-going care	13
45-49	Male	Died	3
45-49	Female	Discharged	52
45-49	Female	On-going care	12
45-49	Female	Died	2
50-54	Male	Discharged	59
50-54	Male	On-going care	17
50-54	Male	Died	2
50-54	Female	Discharged	54
50-54	Female	On-going care	10
55-59	Male	Discharged	62
55-59	Male	On-going care	13
55-59	Male	Died	8
55-59	Female	Discharged	47
55-59	Female	On-going care	16
55-59	Female	Died	9
60-64	Male	Discharged	63
60-64	Male	On-going care	18
60-64	Male	Died	8
60-64	Female	Discharged	40
60-64	Female	On-going care	8
60-64	Female	Died	6
65-69	Male	Discharged	48
65-69	Male	On-going care	12
65-69	Male	Died	13
65-69	Female	Discharged	31
65-69	Female	On-going care	8

age.factor	sex	status	n
65-69	Female	Died	4
70-74	Male	Discharged	46
70-74	Male	On-going care	14
70-74	Male	Died	8
70-74	Female	Discharged	45
70-74	Female	On-going care	16
70-74	Female	Died	5
75-79	Male	Discharged	47
75-79	Male	On-going care	22
75-79	Male	Died	14
75-79	Female	Discharged	34
75-79	Female	On-going care	8
75-79	Female	Died	8
80-84	Male	Discharged	45
80-84	Male	On-going care	13
80-84	Male	Died	10
80-84	Female	Discharged	36
80-84	Female	On-going care	11
80-84	Female	Died	14
85-89	Male	Discharged	31
85-89	Male	On-going care	16
85-89	Male	Died	10
85-89	Female	Discharged	34
85-89	Female	On-going care	18
85-89	Female	Died	10
85-89	NA	Discharged	1
90+	Male	Discharged	15
90+	Male	On-going care	10
90+	Male	Died	13
90+	Female	Discharged	26
90+	Female	On-going care	13
90+	Female	Died	10

Table for figure 2B

age.factor	sex	status	n
0-4	Male	Discharged	12
0-4	Male	On-going care	1
0-4	Female	Discharged	16
0-4	Female	On-going care	1
5-9	Male	Discharged	3
5-9	Female	Discharged	1
5-9	Female	On-going care	1
10-14	Male	Discharged	5
10-14	Male	On-going care	3
10-14	Female	Discharged	7
10-14	Female	On-going care	1
15-19	Male	Discharged	10
15-19	Male	On-going care	2
15-19	Female	Discharged	9
15-19	Female	On-going care	4
20-24	Male	Discharged	19
20-24	Male	On-going care	6
20-24	Female	Discharged	36
20-24	Female	On-going care	3
25-29	Male	Discharged	30
25-29	Male	On-going care	6
25-29	Female	Discharged	30
25-29	Female	On-going care	8
25-29	Female	Died	1
30-34	Male	Discharged	41
30-34	Male	On-going care	3
30-34	Female	Discharged	31
30-34	Female	On-going care	2
30-34	Female	Died	1
35-39	Male	Discharged	25
35-39	Male	On-going care	5

age.factor	sex	status	n
35-39	Male	Died	1
35-39	Female	Discharged	39
35-39	Female	On-going care	6
40-44	Male	Discharged	27
40-44	Male	On-going care	10
40-44	Female	Discharged	15
40-44	Female	On-going care	5
45-49	Male	Discharged	22
45-49	Male	On-going care	3
45-49	Male	Died	1
45-49	Female	Discharged	17
45-49	Female	On-going care	1
45-49	Female	Died	1
50-54	Male	Discharged	14
50-54	Male	On-going care	9
50-54	Male	Died	1
50-54	Female	Discharged	19
50-54	Female	On-going care	5
55-59	Male	Discharged	19
55-59	Male	On-going care	1
55-59	Male	Died	3
55-59	Female	Discharged	15
55-59	Female	On-going care	5
55-59	Female	Died	1
60-64	Male	Discharged	17
60-64	Male	On-going care	4
60-64	Male	Died	2
60-64	Female	Discharged	14
60-64	Female	On-going care	4
65-69	Male	Discharged	12
65-69	Male	On-going care	7
65-69	Male	Died	3

age.factor	sex	status	n
65-69	Female	Discharged	8
70-74	Male	Discharged	11
70-74	Male	On-going care	3
70-74	Male	Died	2
70-74	Female	Discharged	11
70-74	Female	On-going care	5
75-79	Male	Discharged	10
75-79	Male	On-going care	7
75-79	Male	Died	6
75-79	Female	Discharged	6
75-79	Female	On-going care	2
75-79	Female	Died	1
80-84	Male	Discharged	12
80-84	Male	On-going care	4
80-84	Male	Died	3
80-84	Female	Discharged	6
80-84	Female	On-going care	2
80-84	Female	Died	2
85-89	Male	Discharged	3
85-89	Male	On-going care	4
85-89	Male	Died	3
85-89	Female	Discharged	6
85-89	Female	On-going care	4
85-89	Female	Died	6
85-89	NA	Discharged	1
90+	Male	Discharged	3
90+	Male	On-going care	5
90+	Male	Died	4
90+	Female	Discharged	8
90+	Female	On-going care	1
90+	Female	Died	3

Table for figure 7A

day	status	n
1	Discharged	224
1	Ward	1694
1	Ward (O2)	664
1	HDU/ICU	49
1	HDU/ICU (O2)	22
1	HDU/ICU (noninvasive)	57
1	ICU (ventilated)	24
1	Died	13
2	Discharged	573
2	Ward	1116
2	Ward (O2)	457
2	HDU/ICU	31
2	HDU/ICU (O2)	17
2	HDU/ICU (noninvasive)	37
2	ICU (ventilated)	12
2	Died	21
3	Discharged	786
3	Ward	904
3	Ward (O2)	390
3	HDU/ICU	23
3	HDU/ICU (O2)	19
3	HDU/ICU (noninvasive)	38
3	ICU (ventilated)	13
3	Died	32
4	Discharged	998
4	Ward	727
4	Ward (O2)	342
4	HDU/ICU	19
4	HDU/ICU (O2)	19
4	HDU/ICU (noninvasive)	35
4	ICU (ventilated)	12
4	Died	41

day	status	n
5	Discharged	1170
5	Ward	602
5	Ward (O2)	286
5	HDU/ICU	17
5	HDU/ICU (O2)	19
5	HDU/ICU (noninvasive)	33
5	ICU (ventilated)	12
5	Died	53
6	Discharged	1313
6	Ward	506
6	Ward (O2)	231
6	HDU/ICU	17
6	HDU/ICU (O2)	19
6	HDU/ICU (noninvasive)	32
6	ICU (ventilated)	8
6	Died	62
7	Discharged	1430
7	Ward	422
7	Ward (O2)	190
7	HDU/ICU	13
7	HDU/ICU (O2)	16
7	HDU/ICU (noninvasive)	29
7	ICU (ventilated)	7
7	Died	75
8	Discharged	1538
8	Ward	346
8	Ward (O2)	152
8	HDU/ICU	13
8	HDU/ICU (O2)	9
8	HDU/ICU (noninvasive)	26
8	ICU (ventilated)	6
8	Died	86

day	status	n
9	Discharged	1602
9	Ward	295
9	Ward (O2)	137
9	HDU/ICU	12
9	HDU/ICU (O2)	9
9	HDU/ICU (noninvasive)	22
9	ICU (ventilated)	5
9	Died	92
10	Discharged	1660
10	Ward	251
10	Ward (O2)	115
10	HDU/ICU	11
10	HDU/ICU (O2)	8
10	HDU/ICU (noninvasive)	19
10	ICU (ventilated)	5
10	Died	101

Table for figure 7B

day	status	n
1	Discharged	72
1	Ward	528
1	Ward (O2)	215
1	HDU/ICU	22
1	HDU/ICU (O2)	3
1	HDU/ICU (noninvasive)	19
1	ICU (ventilated)	6
1	Died	1
2	Discharged	180
2	Ward	338
2	Ward (O2)	133
2	HDU/ICU	14
2	HDU/ICU (O2)	3
2	HDU/ICU (noninvasive)	9

day	status	n
2	ICU (ventilated)	3
2	Died	3
3	Discharged	265
3	Ward	259
3	Ward (O2)	109
3	HDU/ICU	11
3	HDU/ICU (O2)	4
3	HDU/ICU (noninvasive)	9
3	ICU (ventilated)	4
3	Died	6
4	Discharged	329
4	Ward	208
4	Ward (O2)	92
4	HDU/ICU	8
4	HDU/ICU (O2)	4
4	HDU/ICU (noninvasive)	7
4	ICU (ventilated)	3
4	Died	10
5	Discharged	376
5	Ward	171
5	Ward (O2)	79
5	HDU/ICU	7
5	HDU/ICU (O2)	4
5	HDU/ICU (noninvasive)	7
5	ICU (ventilated)	3
5	Died	13
6	Discharged	427
6	Ward	129
6	Ward (O2)	66
6	HDU/ICU	7
6	HDU/ICU (O2)	4
6	HDU/ICU (noninvasive)	7

day	status	n
6	ICU (ventilated)	1
6	Died	15
7	Discharged	472
7	Ward	95
7	Ward (O2)	48
7	HDU/ICU	5
7	HDU/ICU (O2)	3
7	HDU/ICU (noninvasive)	7
7	ICU (ventilated)	1
7	Died	21
8	Discharged	496
8	Ward	77
8	Ward (O2)	40
8	HDU/ICU	4
8	HDU/ICU (O2)	2
8	HDU/ICU (noninvasive)	7
8	Died	24
9	Discharged	521
9	Ward	60
9	Ward (O2)	30
9	HDU/ICU	3
9	HDU/ICU (O2)	1
9	HDU/ICU (noninvasive)	5
9	Died	28
10	Discharged	538
10	Ward	45
10	Ward (O2)	25
10	HDU/ICU	2
10	HDU/ICU (O2)	1
10	HDU/ICU (noninvasive)	4
10	Died	30