



Public Health
England



Test and Trace

Briefing England

Week commencing 28 June 2021

Headline Figures w/c 28 June 2021

England % individuals tested positive:

3.6%

England Weekly case rate, cases per 100,000 population:

129

England general & acute beds used for COVID-19:

934

England Weekly PCR testing rate test per 100,000 population:

503

England Weekly Case rate 60 years and over, cases per 100,000 population:

21

England HDU/ITU beds used for COVID-19:

267

England Weekly LFD testing rate test per 100,000 population:

1,213

England Weekly Case rate 17-21 years, cases per 100,000 population:

475

Weekly deaths in England, 7 day moving average:

12

Sources: coronavirus.data.gov.uk (LFD data up to 26 Jun 2021, deaths data up to 22 Jun 2021), NHS England and Improvement (data up to 25 Jun 2021), PHE (data up to 23 Jun 2021).

High level summary

	Individuals PCR tested per day per 100,000 population		Percentage PCR individuals test positive		Case rate per 100,000 population		Case rate per 100,000 population aged 60 years and over		Case rate per 100,000 population aged 17-21 year olds		Confirmed cases in previous 7 days
East Midlands	391	Increase	3.2%	Increase	90	Increase	15	Increase	299	Increase	4,367
East of England	443	Increase	1.9%	Increase	61	Increase	9	Increase	285	Increase	3,950
London	508	Increase	2.9%	Increase	104	Increase	18	Increase	286	Increase	9,352
North East	525	Increase	6.4%	Increase	236	Increase	34	Increase	1002	Increase	6,301
North West	575	Increase	6.9%	Increase	277	Increase	49	Increase	790	Increase	20,338
South East	516	Increase	1.9%	Increase	73	Increase	10	Increase	364	Increase	6,469
South West	498	Increase	3.1%	Increase	109	Increase	15	Increase	544	Increase	6,139
West Midlands	444	Increase	3.5%	Increase	109	Increase	16	Increase	430	Increase	6,480
Yorkshire and The Humber	436	Increase	5.1%	Increase	156	Increase	25	Increase	545	Increase	8,596
England	503	Increase	3.6%	Increase	129	Increase	21	Increase	475	Increase	72,445

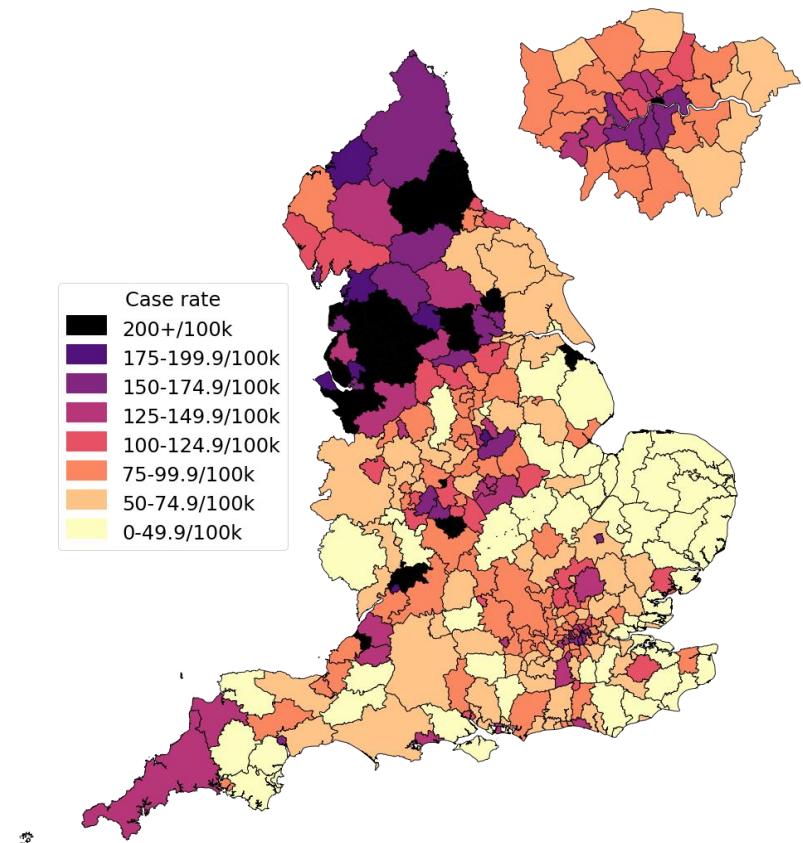
Data for positive cases with specimen dates between **17 June 2021** and **23 June 2021**

Compared to the equivalent figure as of 16 June 2021

Data definitions	
Weekly case rate	Total number of confirmed cases in the most recent 7 day period per 100,000 population
Individuals PCR tested per day per 100,000 (7-DMA)	Number of individuals PCR tested per 100,000 population
Percentage PCR individuals test positive (7-DMA)	Percentage of individuals tested with specimen dates in the most recent 7-days period who were positive for SARS-CoV-2

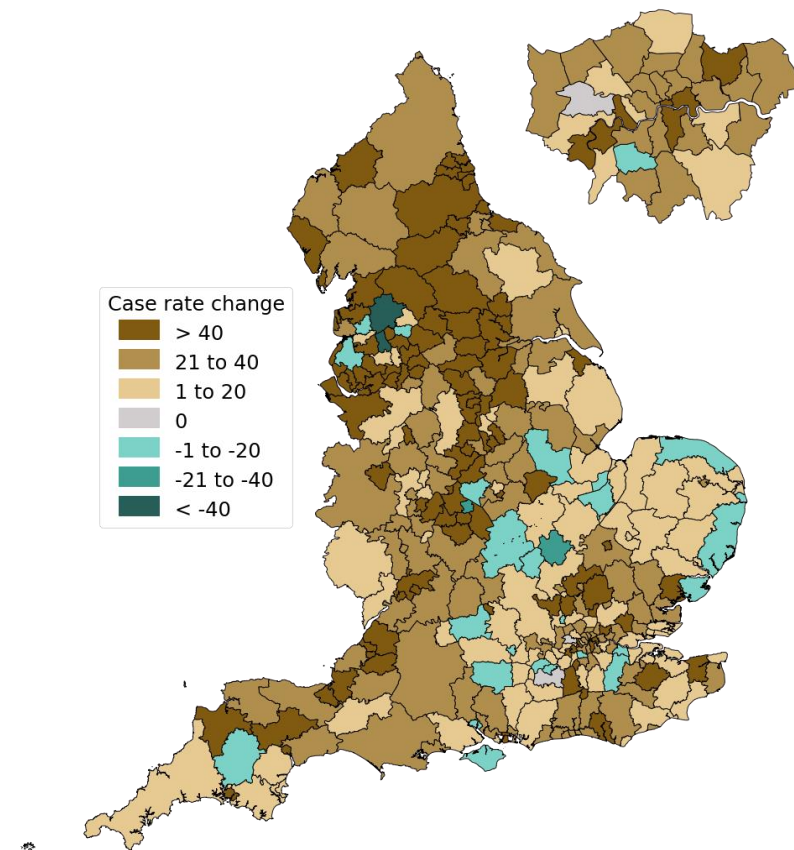
Weekly case rate and rate of change per 100,000 population by Local Authority

Weekly case rates per 100,000 population by local authority
for all ages
17 Jun to 23 Jun 2021



Note: Due to the increase in case rates the range has been changed to now show 200+ cases/100,000 as the top scale point rather than 100+ cases /100,000 previously

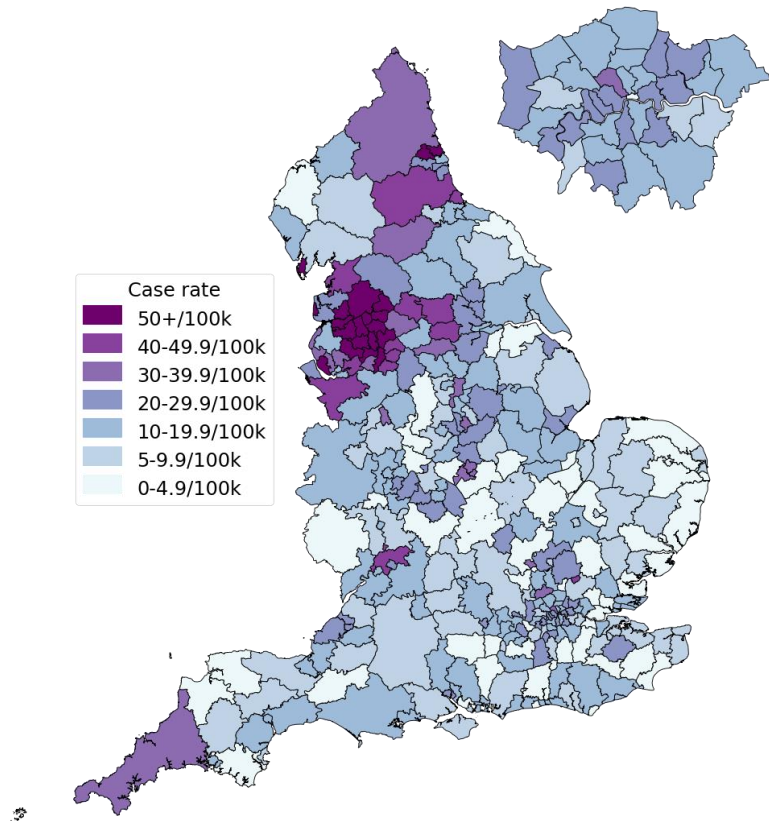
Absolute change per 100,000 population by local authority
for all ages
10 Jun to 16 Jun 2021 and 17 Jun to 23 Jun 2021



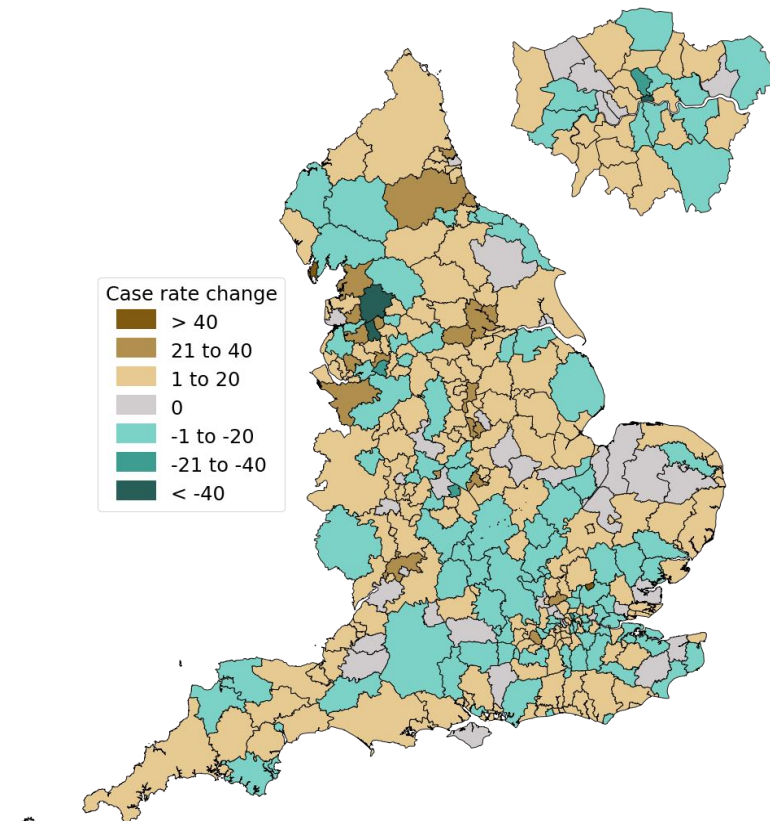
Data from SGSS; Pillar 1 and 2 testing. Figure by Joint Biosecurity Centre
Contains National Statistics Data including 2019 population estimates © Crown copyright and database right 2020

Weekly case rate and rate of change per 100,000 population by Local Authority in age 60+ years only

Weekly case rates per 100,000 population by local authority for ages 60+
17 Jun to 23 Jun 2021



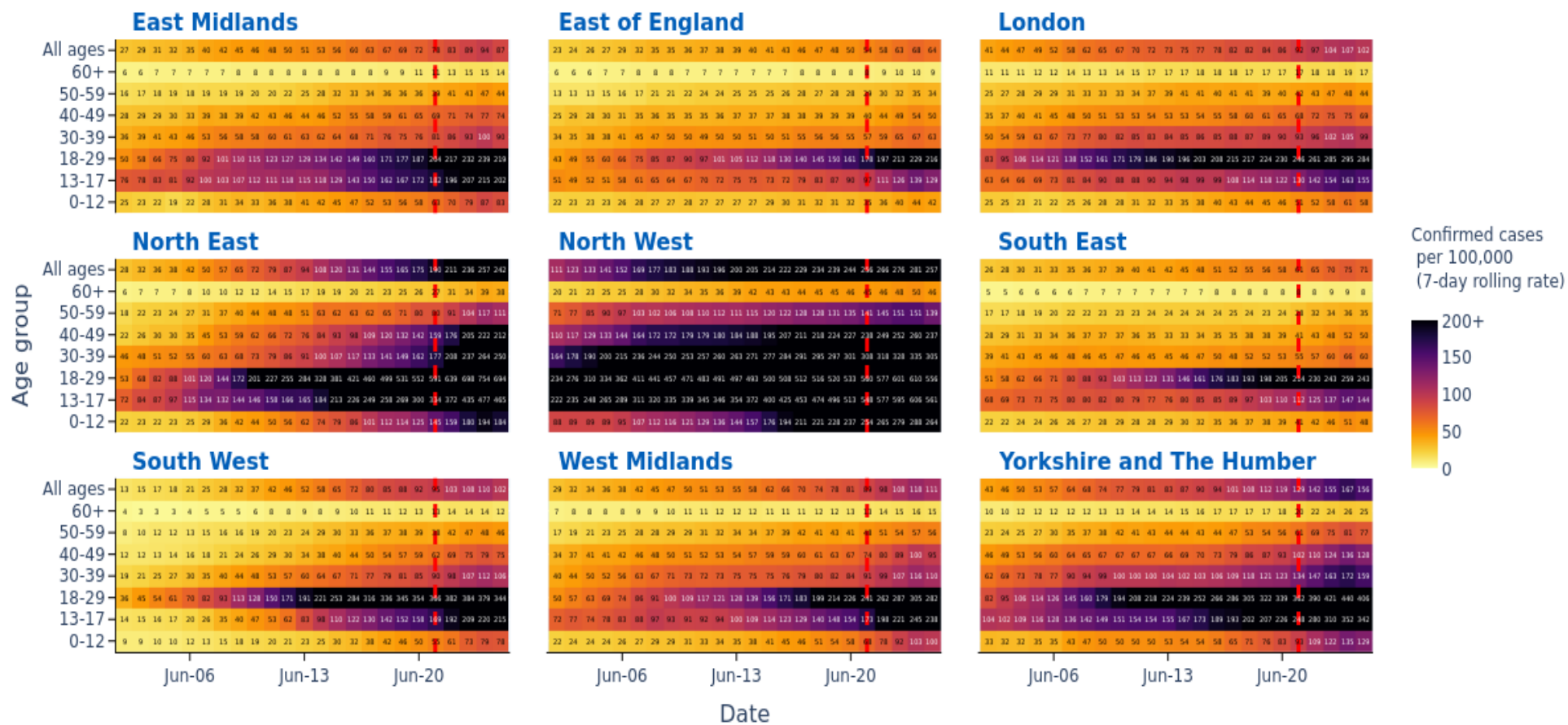
Absolute change per 100,000 population by local authority for ages 60+
10 Jun to 16 Jun 2021 and 17 Jun to 23 Jun 2021



Data from SGSS; Pillar 1 and 2 testing. Figure by Joint Biosecurity Centre
Contains National Statistics Data including 2019 population estimates © Crown copyright and database right 2021

Case rate by age group and region

Data from the 02 June 2021 to 25 June 2021

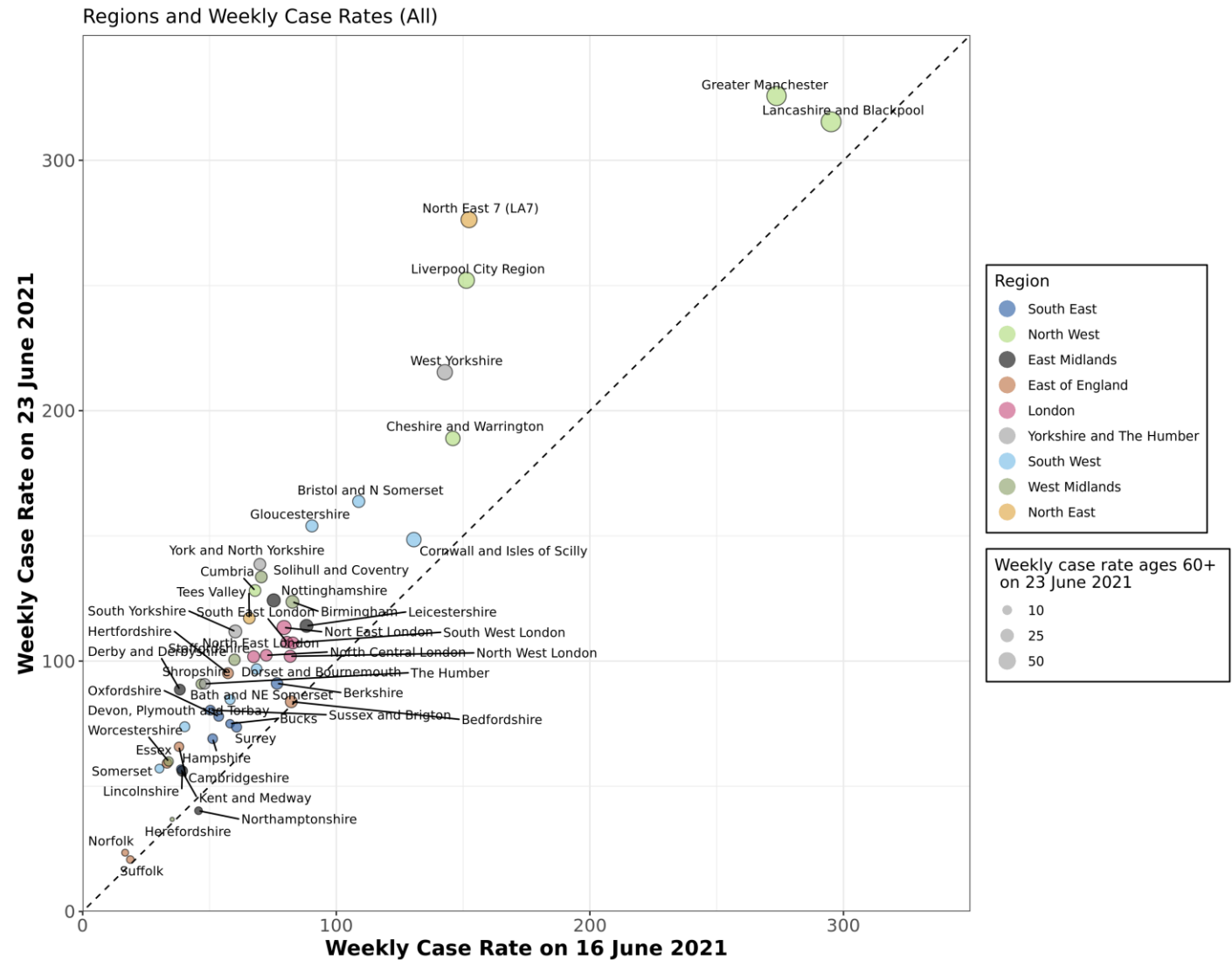


Red dashed line denotes 4 last days of incomplete data. Black dotted line denotes 17th of May - Step 3 of COVID roadmap

Note: Due to the increase in case rates the range has been changed to now show 200+ cases/100,000 as the top scale point rather than 100+ cases /100,000

Weekly case rates by area (23 June vs 16 June comparison)

- The chart shows weekly case rates by area as on 23 June 2021 compared to weekly case rates by area as on 16 June.
- The vertical axis plots the most recent weekly case rate per 100k people (up to the 23 June), and the horizontal axis plots the equivalent case rate from the week before. The higher the bubble, the worse the current case rate picture.
- The size of each bubble is proportional to the most recent case rate per 100k people in those aged over 60 years.
- The colour of each bubble indicates which region the area is in.



Sources: Data from Public Health England, Outbreak Surveillance Team. Weekly case rate is defined as the number of cases per 100,000 reported in the seven day period preceding the stated date. Some names have been shortened for legibility.