



22 June 2021

Year: 2021 Week: 24

In This Issue:

- Key messages.
- Diagnostic indicators at a glance.
- Weekly report statistics.
- Total attendances.
- Respiratory.
- Gastrointestinal.
- Cardiac.
- Notes and caveats.
- Acknowledgements.

Key messages

Data to: 20 June 2021

During week 24, COVID-19-like emergency department attendances continued to increase, most notably in the 15-44 years age group and in the North West (figures 3a-b).

There was a large spike in asthma attendances on 17 June, particularly in age groups 5-64 years (figures 9 & 9a). These increases are potentially linked with thunderstorms occurring across parts of England at that time.

Gastroenteritis attendances continued to increase and are above both the current baseline and pre-COVID levels (figure 11).

Baselines have been remodelled to account for changes due to COVID-19 and additional, new modelled lines have been added to the charts to represent expected levels if COVID-19 had not occurred.

Please see [notes and caveats](#) for information about the ED syndromic indicators including important caveats around the interpretation.

A Heat-Health Watch system operates in England from 1 June to 15 September each year. As part of the Heatwave Plan for England, the PHE Real-time Syndromic Surveillance team will be routinely monitoring the public health impact of hot weather using syndromic surveillance data during this period. <http://www.metoffice.gov.uk/weather/uk/heathealth/>

Heat-health watch level (current reporting week): Level 1: **Summer preparedness**

Diagnostic indicators at a glance:

Indicator	Current trend	Level
COVID-19-like	increasing	-
Respiratory	decreasing	above baseline
Acute Respiratory Infection	no trend	above baseline
Bronchiolitis	increasing	above baseline
Influenza-like Illness	no trend	similar to baseline
Pneumonia	no trend	above baseline
Asthma	no trend	above baseline
Gastrointestinal	no trend	similar to baseline
Gastroenteritis	increasing	above baseline
Cardiac	decreasing	below baseline
Myocardial Ischaemia	no trend	below baseline
Alcohol intoxication	decreasing	above baseline
Heat/Sun stroke	no trend	above baseline

Further details on the syndromic indicators reported and baselines can be found on page 10.

EDSSS weekly report statistics

Only Type 1 EDs meeting the weekly reporting criteria are included (see page 10 for details).

*max EDs included across full time period reported in charts, individual days may include fewer EDs.

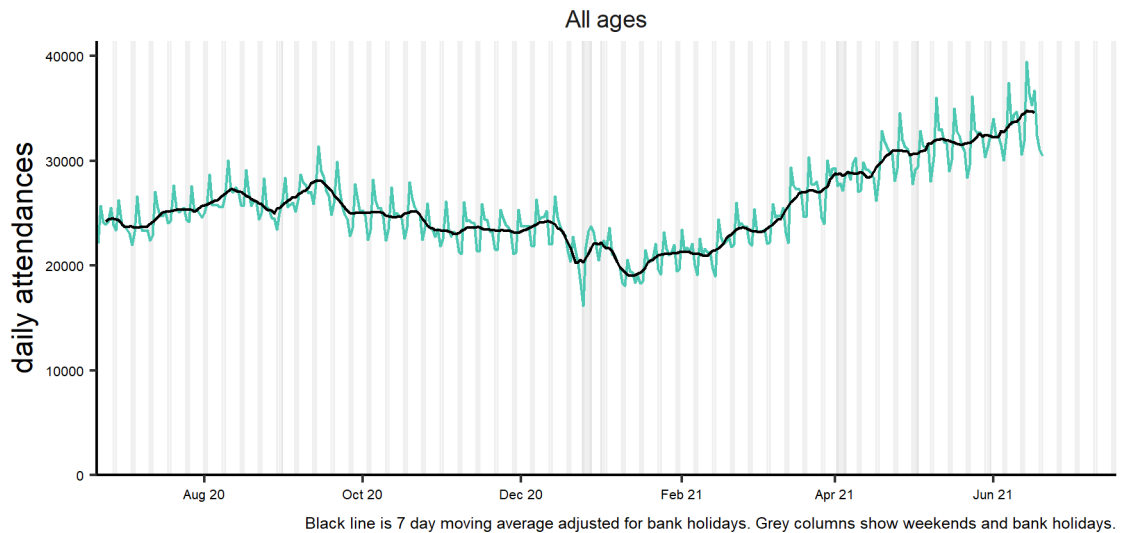
Date	Total Attendances	Diagnoses Coded Number	Diagnoses Coded %	Type 1 EDs Included
14/06/2021	39,470	26,621	67.4%	127
15/06/2021	36,437	24,959	68.5%	127
16/06/2021	35,296	24,122	68.3%	127
17/06/2021	36,723	24,263	66.1%	127
18/06/2021	32,402	22,644	69.9%	127
19/06/2021	31,097	20,822	67.0%	127
20/06/2021	30,472	21,542	70.7%	127
Total	241,897	164,973	68.2%	(max)* 127

1: Total attendances.

Daily number of total attendances recorded, across the EDSSS network.

(see page 6 for ED inclusion criteria).

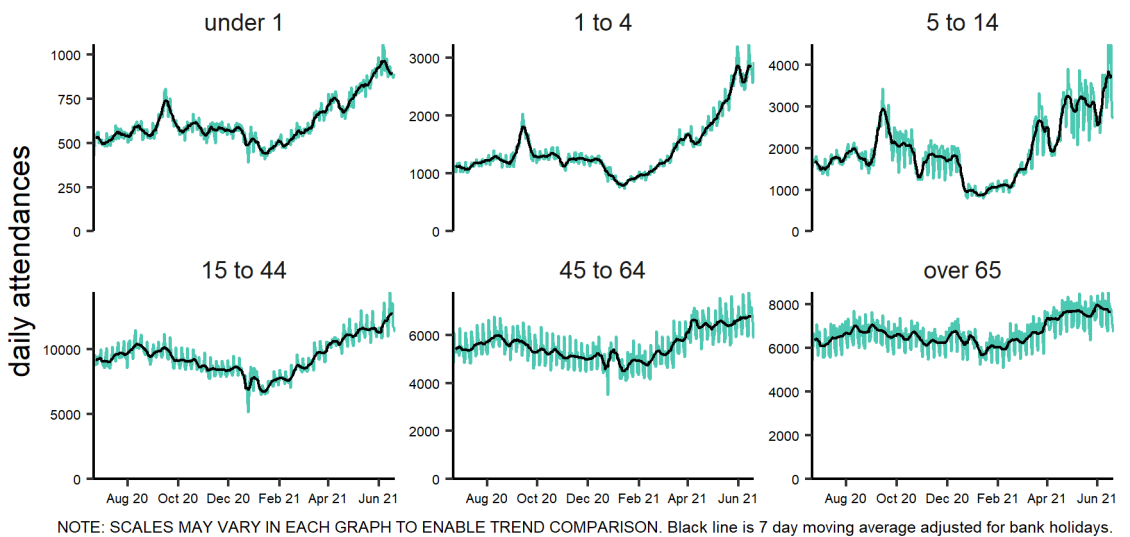
Total attendances 21/06/2020 - 20/06/2021



1a: Daily attendances by age: numbers.

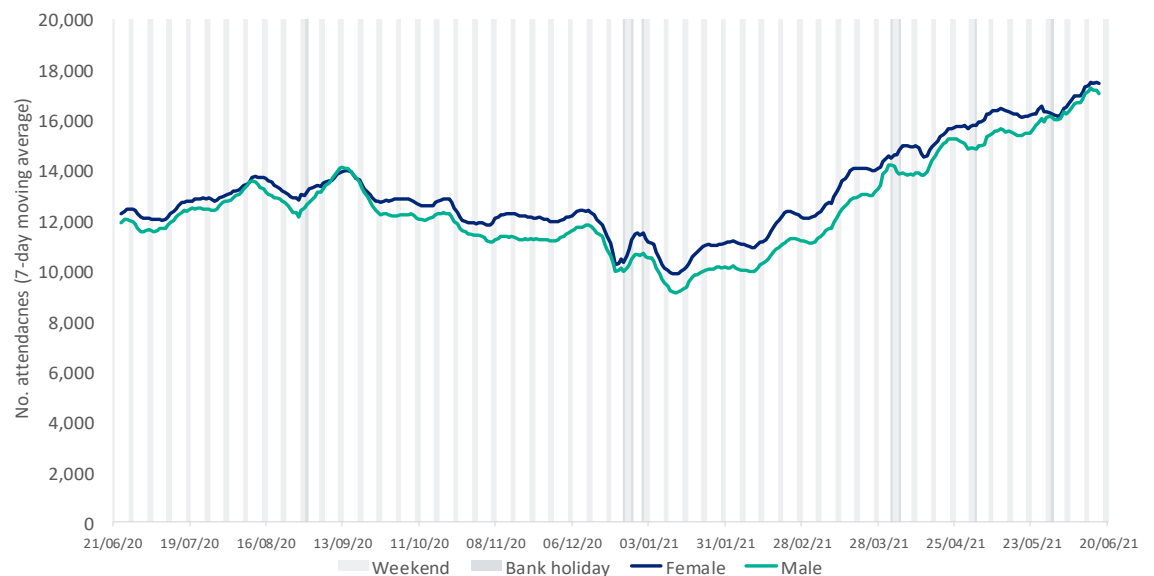
Daily number and 7-day moving average of total attendances, by age group.

Total attendances by age group (years) 21/06/2020 - 20/06/2021



2: Daily attendances by gender: numbers

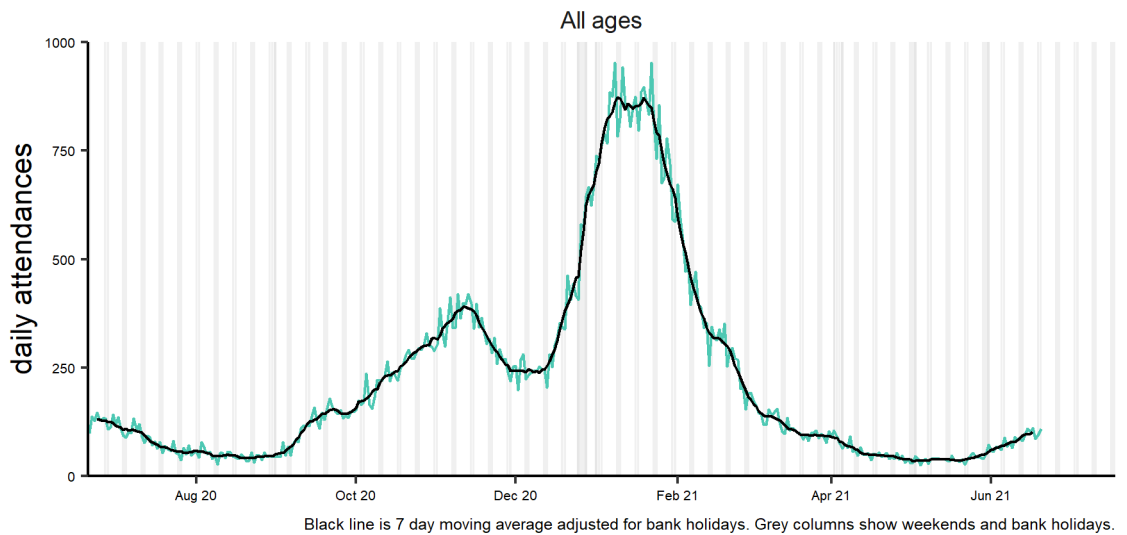
Daily number of total attendances by gender, recorded across the EDSSS network (shown as a 7-day moving average). Please note: indeterminate gender is not shown due to small numbers



3: COVID-19-like.

Daily number of attendances recorded as COVID-19-like attendances across the EDSSS network.

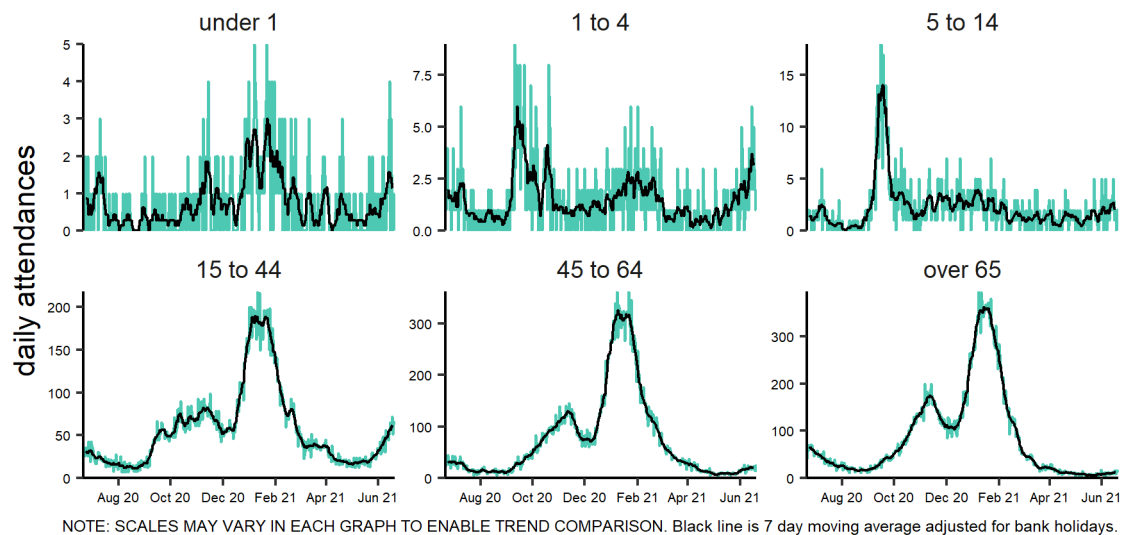
Covid-19-like 21/06/2020 - 20/06/2021



3a: COVID-19-like by age group.

Daily number and 7 day moving average of COVID-19-like attendances within each age group.

Covid-19-like by age group (years) 21/06/2020 - 20/06/2021

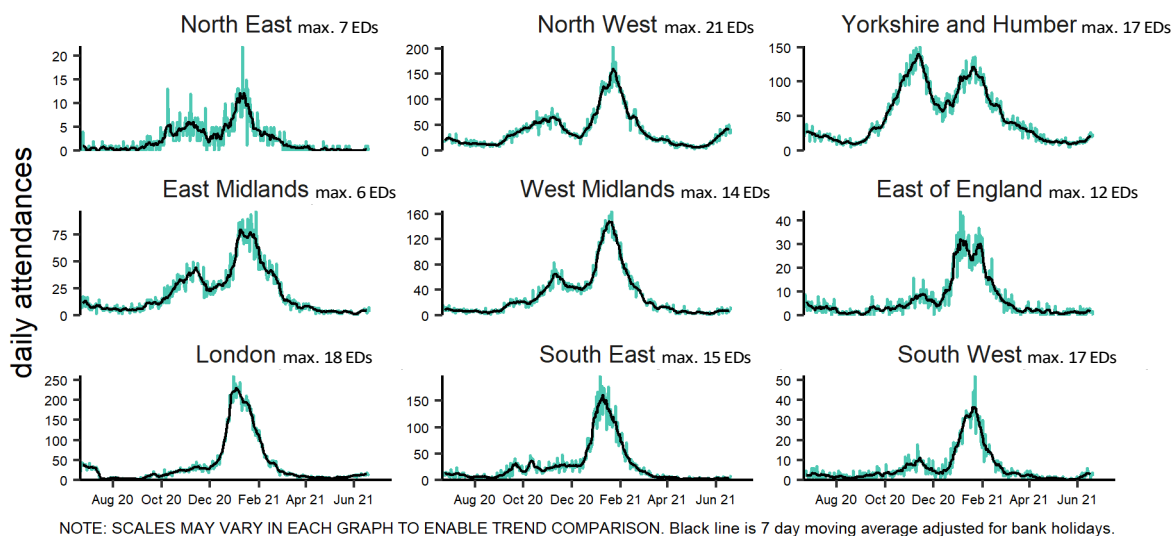


3b: COVID-19-like by PHE Centre

Daily attendances and 7 day moving average of COVID-19-like attendances within each PHE Centre (with the maximum number of EDs included in each time series).

Please see ['notes and caveats'](#) for information on how EDs are selected for inclusion each week.

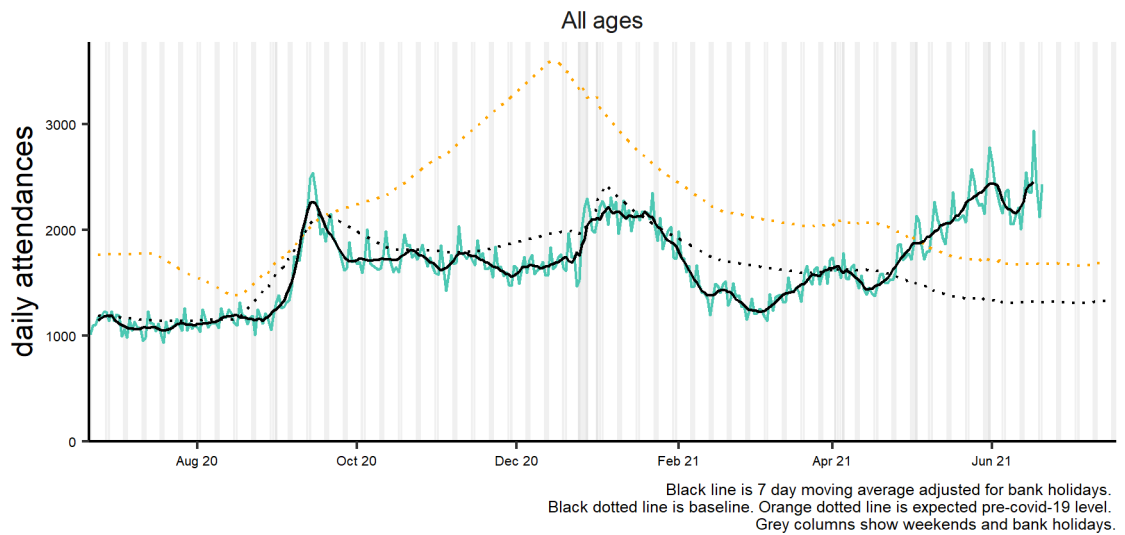
Covid-19-like by PHE centre 21/06/2020 - 20/06/2021



4: Respiratory.

Daily number of attendances recorded as respiratory attendances across the EDSSS network.

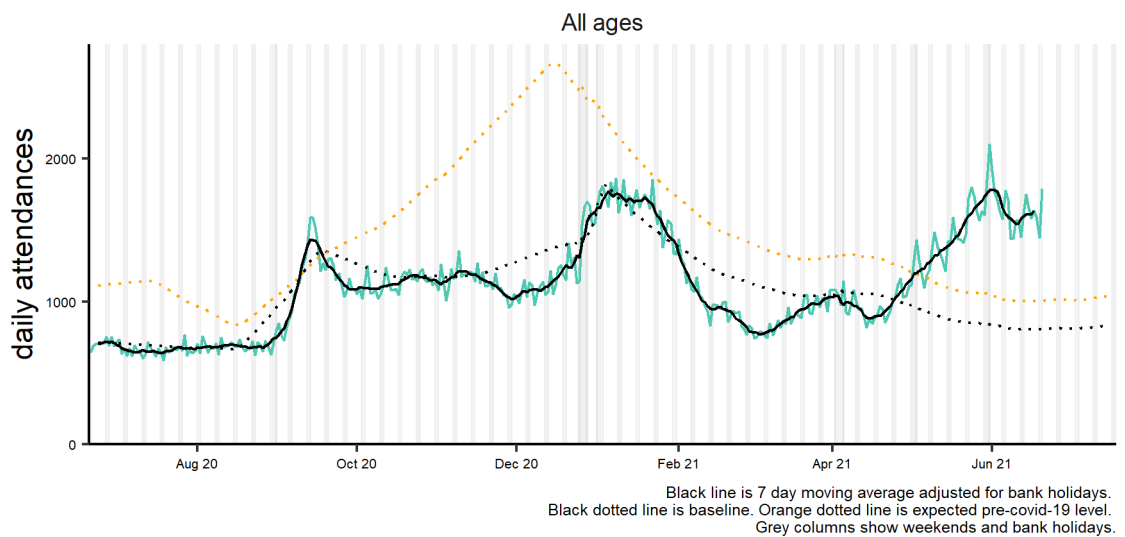
Respiratory conditions 21/06/2020 - 20/06/2021



5: Acute Respiratory Infection.

Daily number of all attendances recorded as acute respiratory infection attendances across the EDSSS network.

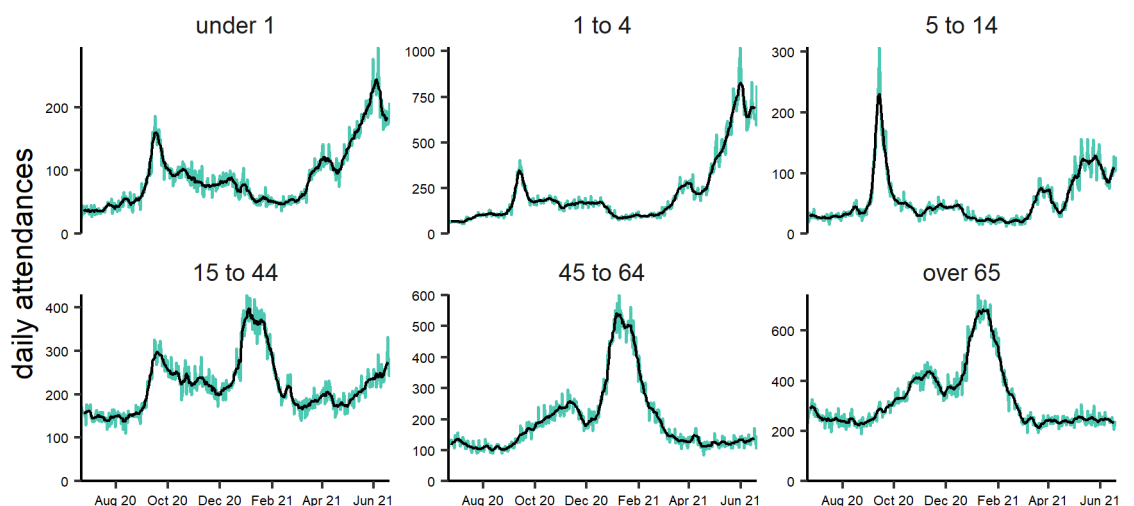
Acute respiratory infection 21/06/2020 - 20/06/2021



5a: Acute Respiratory Infection by age group.

7 day moving average of ARI attendances within each age group.

Acute respiratory infection by age group (years) 21/06/2020 - 20/06/2021

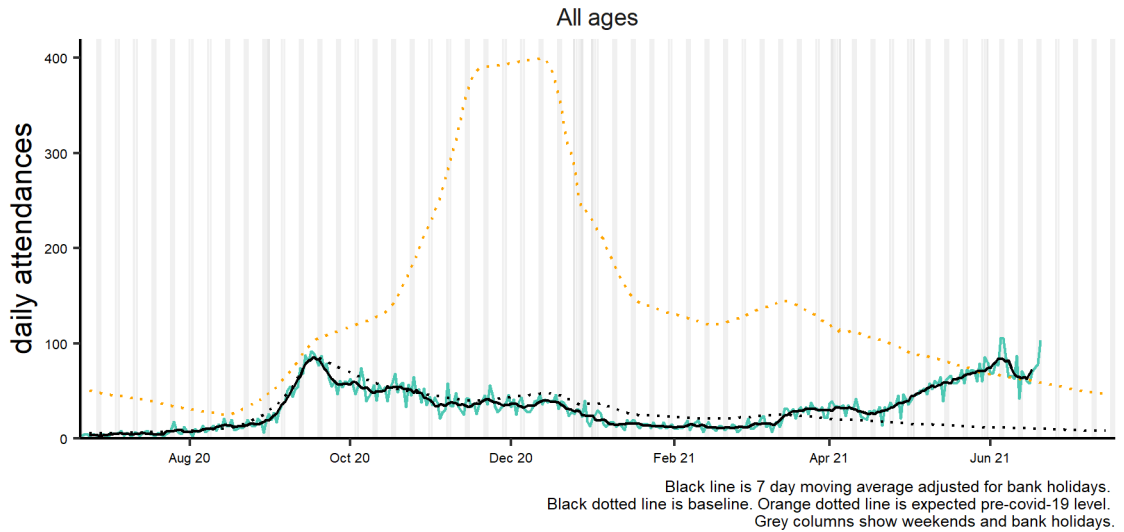


NOTE: SCALES MAY VARY IN EACH GRAPH TO ENABLE TREND COMPARISON. Black line is 7 day moving average adjusted for bank holidays.

6: Bronchiolitis/ bronchitis.

Daily number of attendances recorded as bronchiolitis/ acute bronchitis attendances across the EDSSS network.

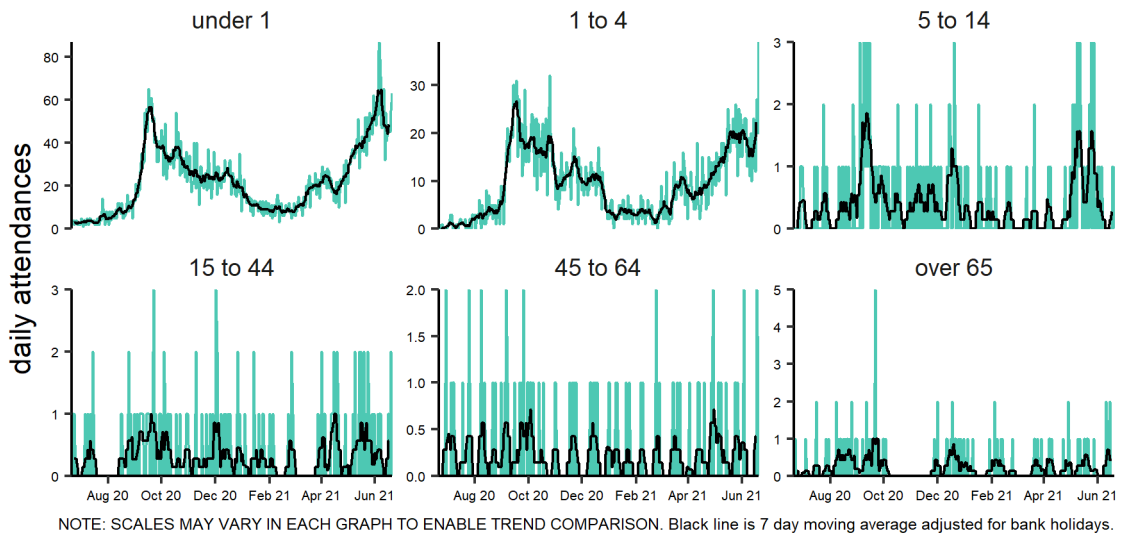
Acute bronchiolitis 21/06/2020 - 20/06/2021



6a: Bronchiolitis/ bronchitis by age group

7 day moving average of bronchiolitis/ bronchitis attendances within each age group.

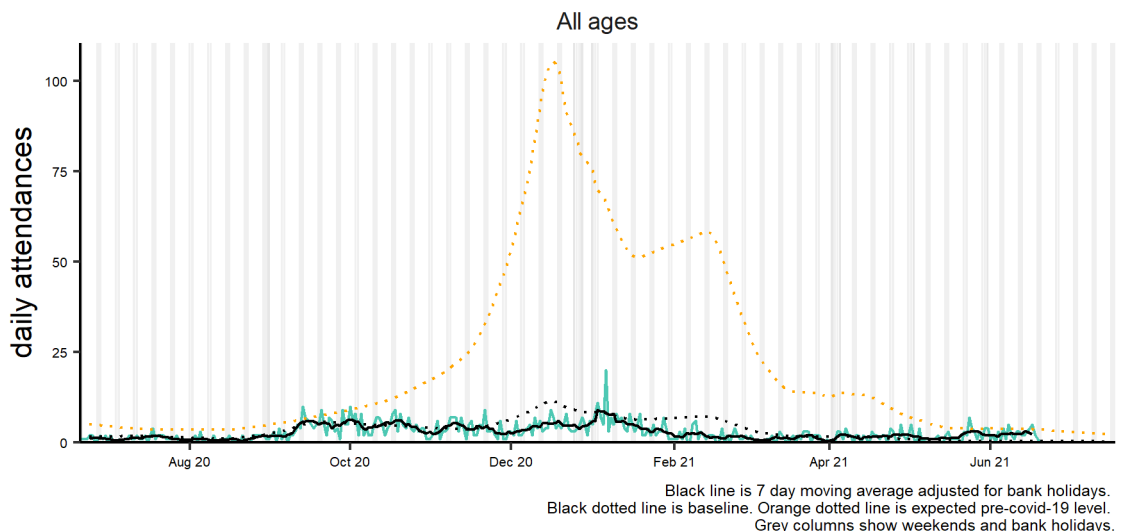
Acute bronchiolitis by age group (years) 21/06/2020 - 20/06/2021



7: Influenza-like illness.

Daily number of attendances recorded as influenza-like illness attendances across the EDSSS network.

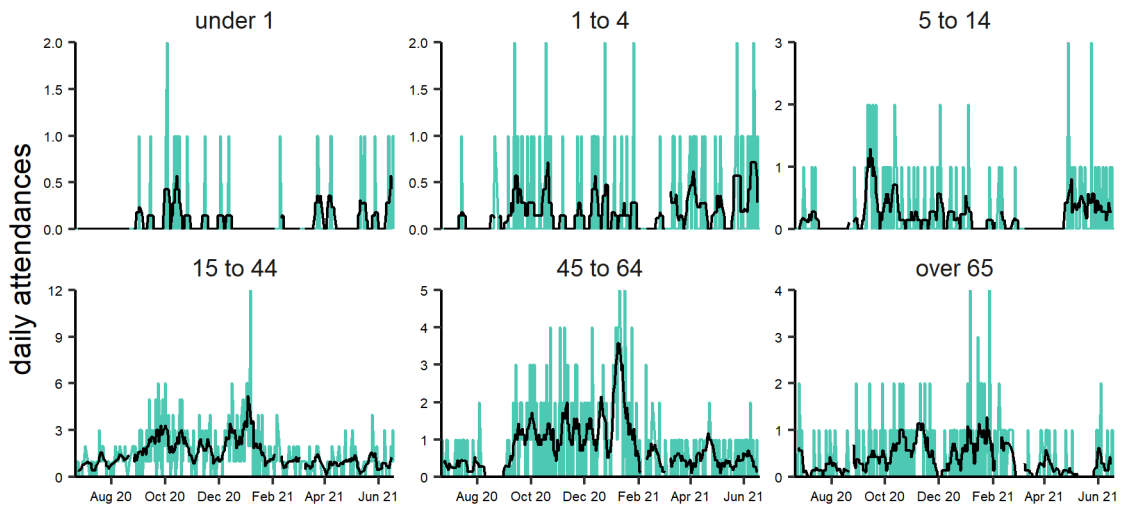
Influenza-like illness 21/06/2020 - 20/06/2021



7a: Influenza-like illness by age group

7 day moving average of ILI attendances within each age group.

Influenza-like illness by age group (years) 21/06/2020 - 20/06/2021

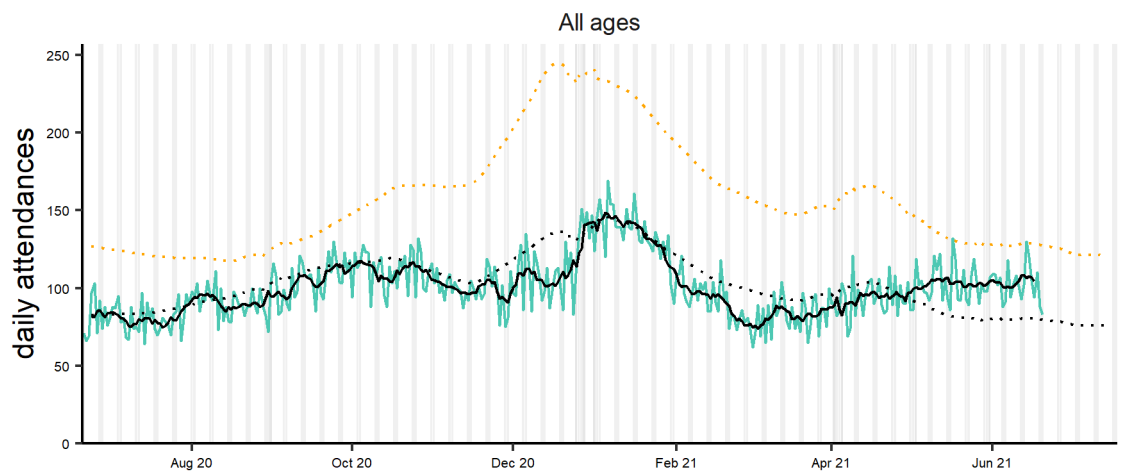


NOTE: SCALES MAY VARY IN EACH GRAPH TO ENABLE TREND COMPARISON. Black line is 7 day moving average adjusted for bank holidays.

8: Pneumonia.

Daily number of attendances recorded as pneumonia attendances across the EDSSS network.

Pneumonia 21/06/2020 - 20/06/2021

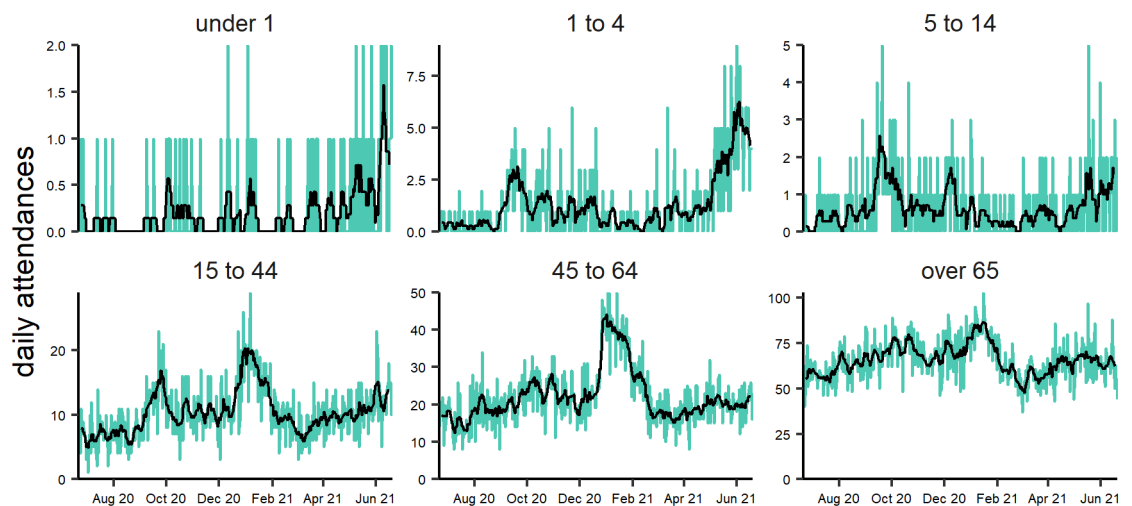


Black line is 7 day moving average adjusted for bank holidays. Black dotted line is baseline. Orange dotted line is expected pre-covid-19 level. Grey columns show weekends and bank holidays.

8a: Pneumonia by age group.

7 day moving average of pneumonia attendances within each age group.

Pneumonia by age group (years) 21/06/2020 - 20/06/2021

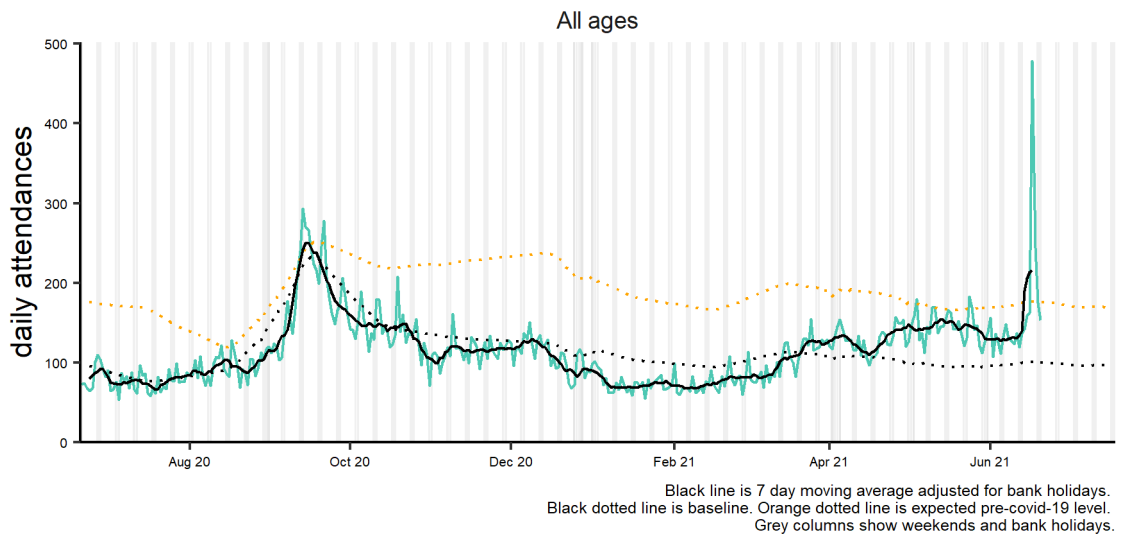


NOTE: SCALES MAY VARY IN EACH GRAPH TO ENABLE TREND COMPARISON. Black line is 7 day moving average adjusted for bank holidays.

9: Asthma.

Daily number of attendances recorded as asthma/wheeze/difficulty breathing across the EDSSS network.

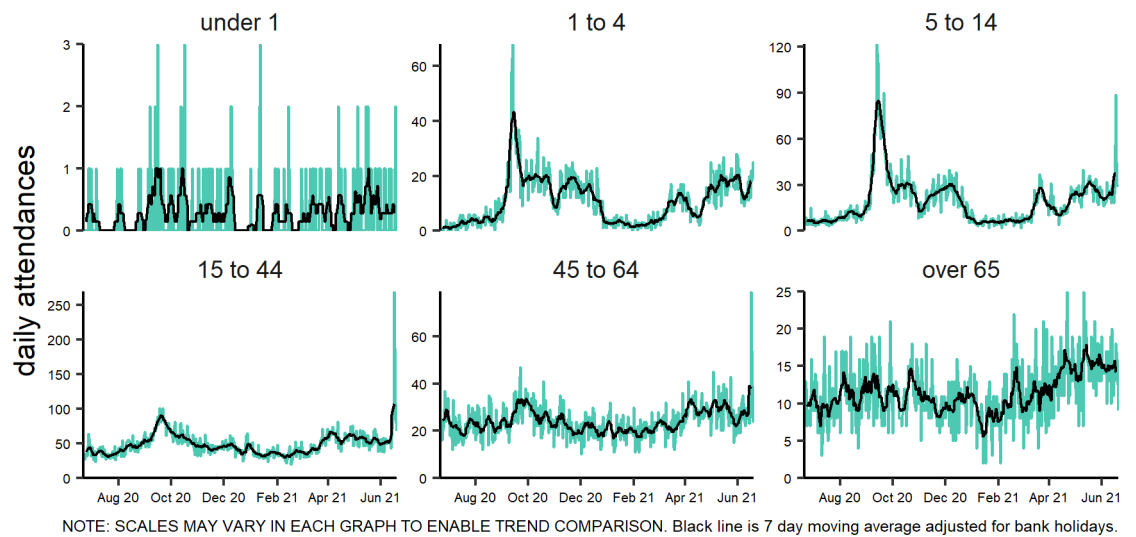
Asthma 21/06/2020 - 20/06/2021



9a: Asthma by age group.

7 day moving average of asthma attendances within each age group.

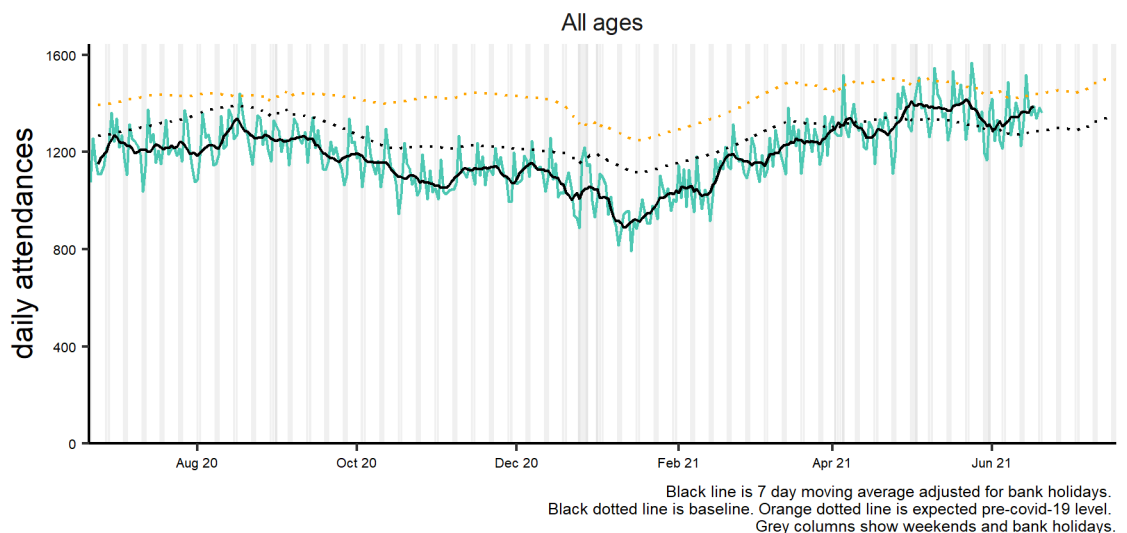
Asthma by age group (years) 21/06/2020 - 20/06/2021



10: Gastrointestinal.

Daily number of attendances recorded as gastrointestinal across the EDSSS network.

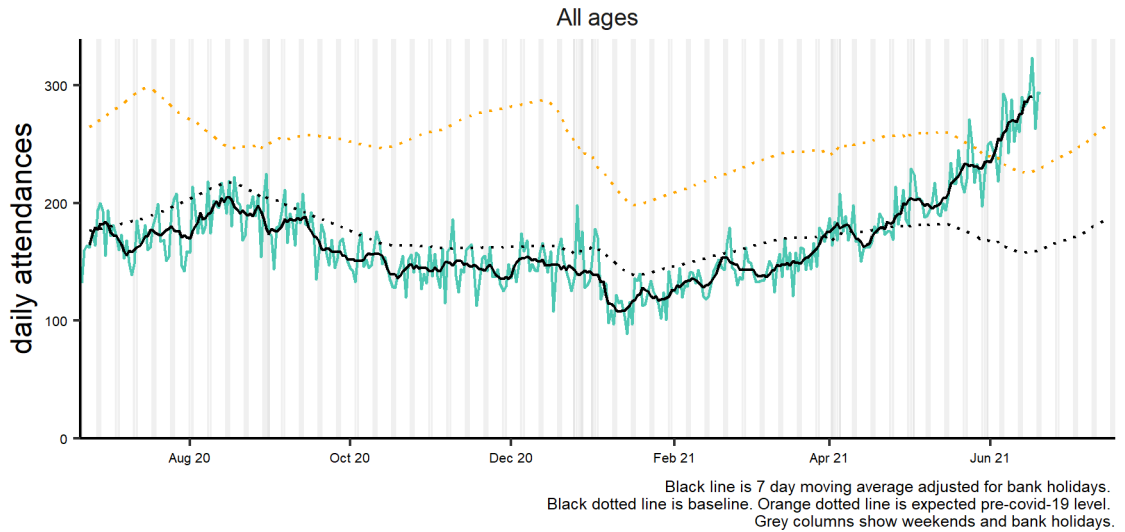
Gastrointestinal conditions 21/06/2020 - 20/06/2021



11: Gastroenteritis

Daily number of attendances recorded as gastroenteritis across the EDSSS network.

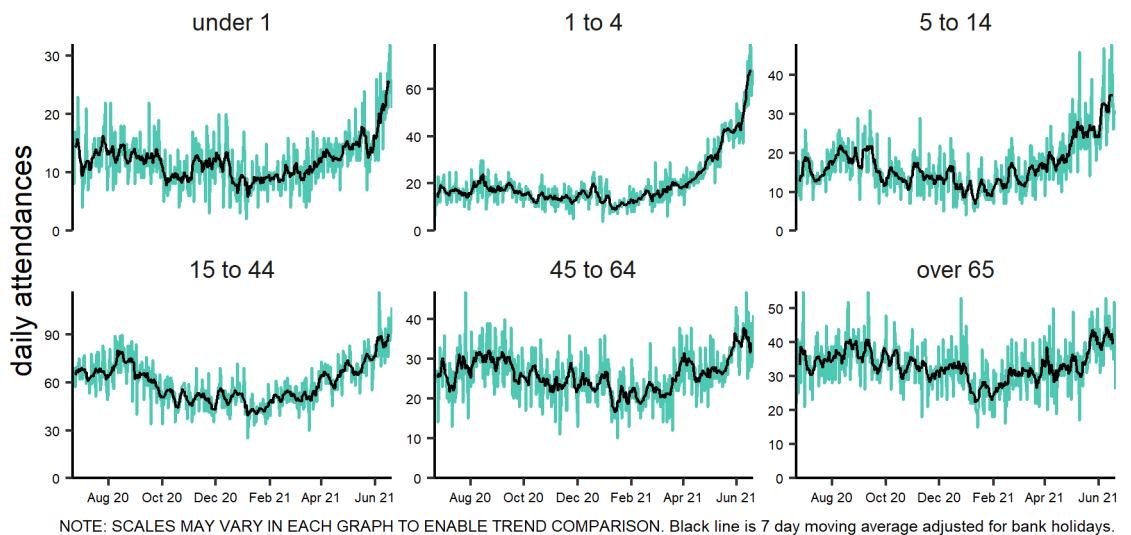
Gastroenteritis 21/06/2020 - 20/06/2021



11a: Gastroenteritis by age group.

7 day moving average of gastroenteritis attendances within each age group.

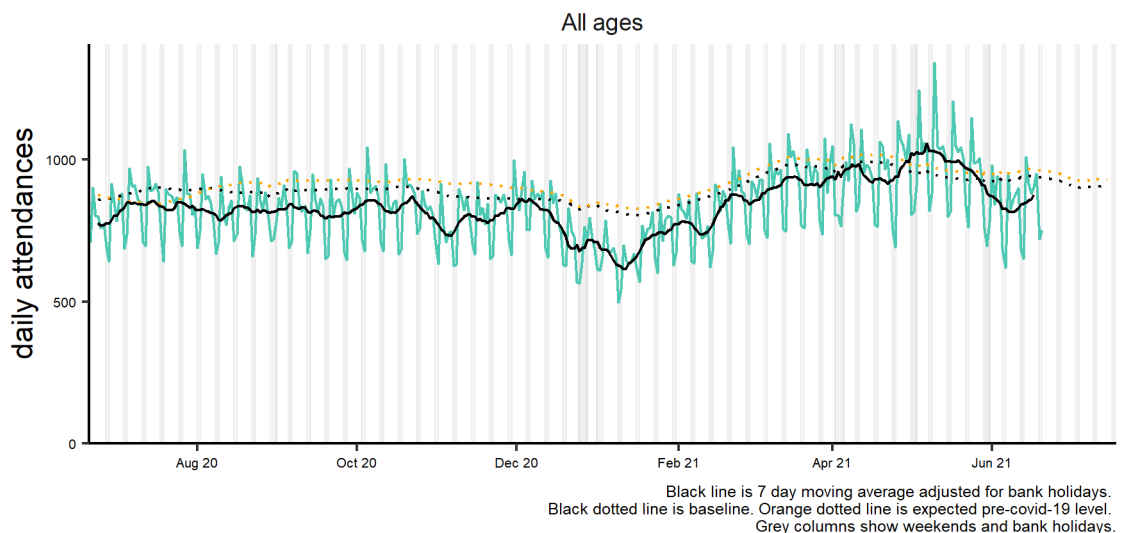
Gastroenteritis by age group (years) 21/06/2020 - 20/06/2021



12: Cardiac.

Daily number of attendances recorded as cardiac attendances across the EDSSS network.

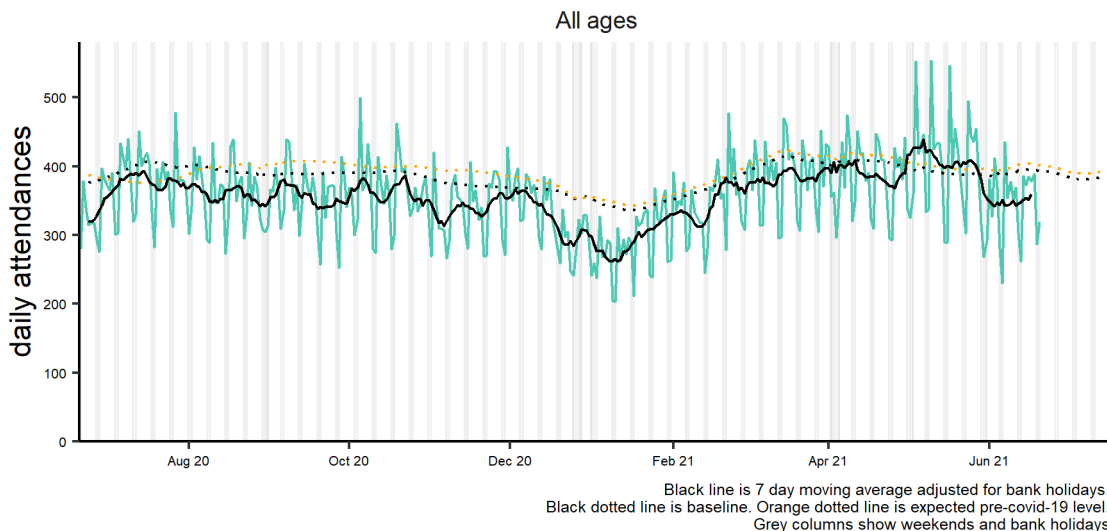
Cardiac conditions 21/06/2020 - 20/06/2021



13: Myocardial Ischaemia.

Daily number of attendances recorded as myocardial ischaemia attendances across the EDSSS network.

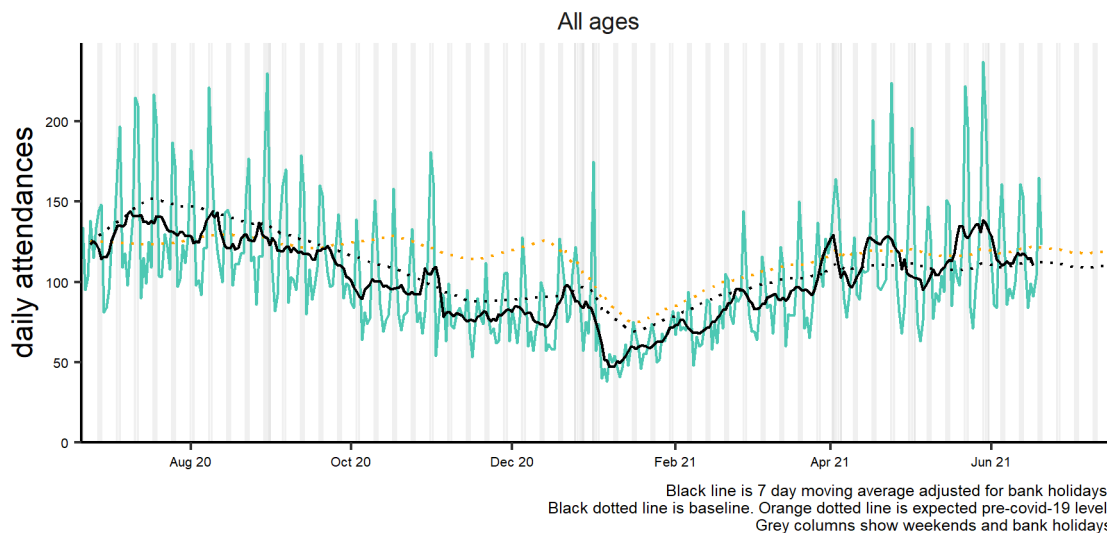
Myocardial ischaemia 21/06/2020 - 20/06/2021



14. Acute alcohol intoxication

Daily number of attendances recorded as acute alcohol intoxication attendances across the EDSSS network.

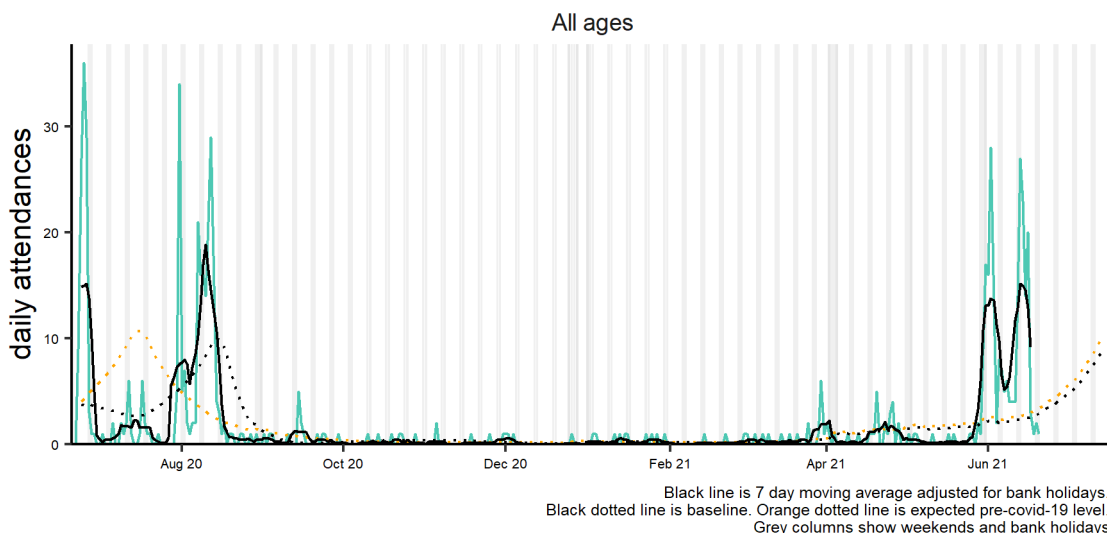
Acute alcohol intoxication 21/06/2020 - 20/06/2021



15. Heat or sunstroke

Daily number of attendances recorded as heat or sunstroke attendances across the EDSSS network.

Heat or sunstroke 21/06/2020 - 20/06/2021



Notes and caveats:

- ▶ **National EDSSS** began operating in April 2018. Following the introduction of the Emergency Care Data Set (ECDS) the: <https://www.england.nhs.uk/ourwork/tsd/ec-data-set/>
- ▶ EDSSS receives an automated daily transfer of anonymised ED data from NHS Digital
- ▶ **Not all EDs currently provide data through ECDS on a daily basis**
- ▶ EDs are eligible for inclusion in this report only where the EDSSS reporting criteria have been met during the surveillance week reported:
 - Data relates to attendances at a type 1 ED
 - Data for 7 of the 7 most recent days was received by PHE
 - Data for those days was received within 2 calendar days of the patient arrival
- ▶ Where an ED meets these criteria, all data received from that ED previous to the current surveillance week is included. EDs eligible for inclusion is likely to change each week, which will in turn affect the historical data inclusion
- ▶ Individual EDs will not be identified in syndromic surveillance reporting in these bulletins
- ▶ **All EDs report diagnoses to EDSSS using SnomedCT codes**
- ▶ Not all diagnoses are confirmed
- ▶ The syndromic indicators presented in this bulletin are based on the **primary diagnosis of each attendance** as reported by EDs using SnomedCT codes:
 - Respiratory:** All respiratory diseases and conditions (infectious and non infectious).
 - Asthma:** As indicated by title.
 - Acute Respiratory Infections (ARI):** All acute infectious respiratory diseases.
 - Bronchiolitis/ bronchitis:** As indicated by title (excluding 'chronic').
 - Influenza-like illness (ILI):** As indicated by title.
 - Pneumonia:** As indicated by title.
 - COVID-19-like:** Coronavirus* or Severe Acute Respiratory Syndrome (SARS).
 - *Please note: not all EDs have reported a coronavirus diagnosis code.
 - Gastrointestinal:** All gastrointestinal diseases and conditions (infectious and non infectious).
 - Gastroenteritis:** All infectious gastrointestinal diseases.
 - Cardiac:** All cardiac conditions.
 - Myocardial Ischaemia:** All ischaemic heart disease.
 - Acute alcohol intoxication:** As indicated by title (excluding 'chronic')
- ▶ **EDSSS indicators are likely to be an underestimation of number attendances as they are based on primary diagnosis only.**
- ▶ **The EDSSS should therefore be used to monitor trends in ED attendances and not numbers of 'cases'.**
- ▶ Baselines have been remodelled to account for changes due to COVID-19 and the orange dotted lines are counter-factual models showing seasonally expected levels if covid-19 had not occurred. Baselines take into account: the change from sentinel to National EDSSS and coverage (numbers of attendances and the individual type 1 EDs included).
- ▶ - **Sentinel EDSSS** ran from July 2010 to March 2018, collected data through a bespoke, voluntary network of EDs across England and Northern Ireland.

Acknowledgements:

We are grateful to the clinicians in each ED and other staff within each Trust for their continued involvement in the EDSSS.

We thank the Royal College of Emergency Medicine, NHS Digital and NHS England for their support in the development of national EDSSS, using anonymised data collection from ECDS.

Emergency Department Syndromic Surveillance System Bulletin.

Produced by: PHE Real-time Syndromic Surveillance Team
1stFloor, 5 St Philips Place, Birmingham, B3 2PW

Tel: 0344 225 3560 > Option 4 > Option 2 **Email:** syndromic.surveillance@phe.gov.uk

Web: <https://www.gov.uk/government/collections/syndromic-surveillance-systems-and-analyses>