

Dynamic CO-CIN report to SAGE and NERVTAG

Executive summary

Includes patients admitted on or after 01 May 2021

There are 884 patients included in CO-CIN. Of these, 52 patient(s) have died and 89 required ICU. 577 have been discharged home.

Admission

Figure 1

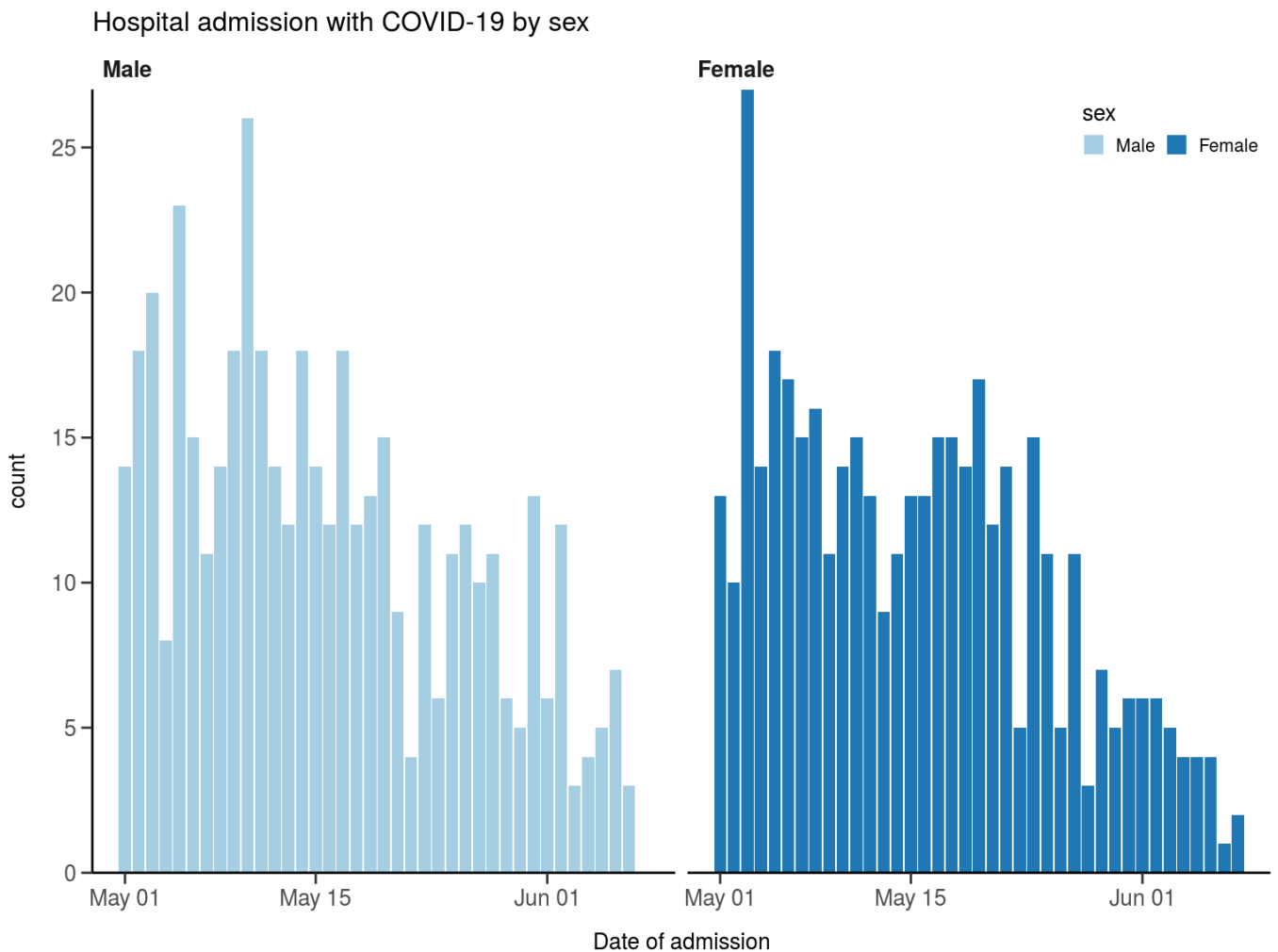
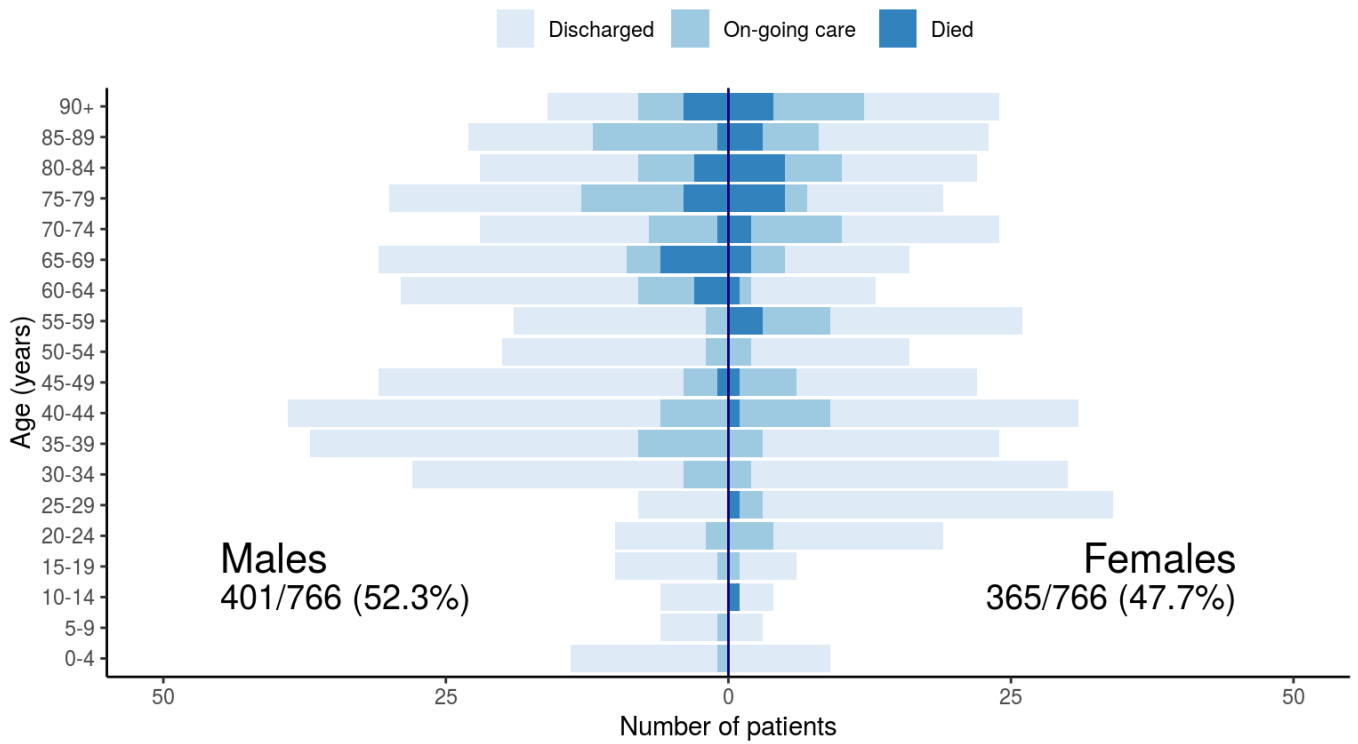


Figure 2

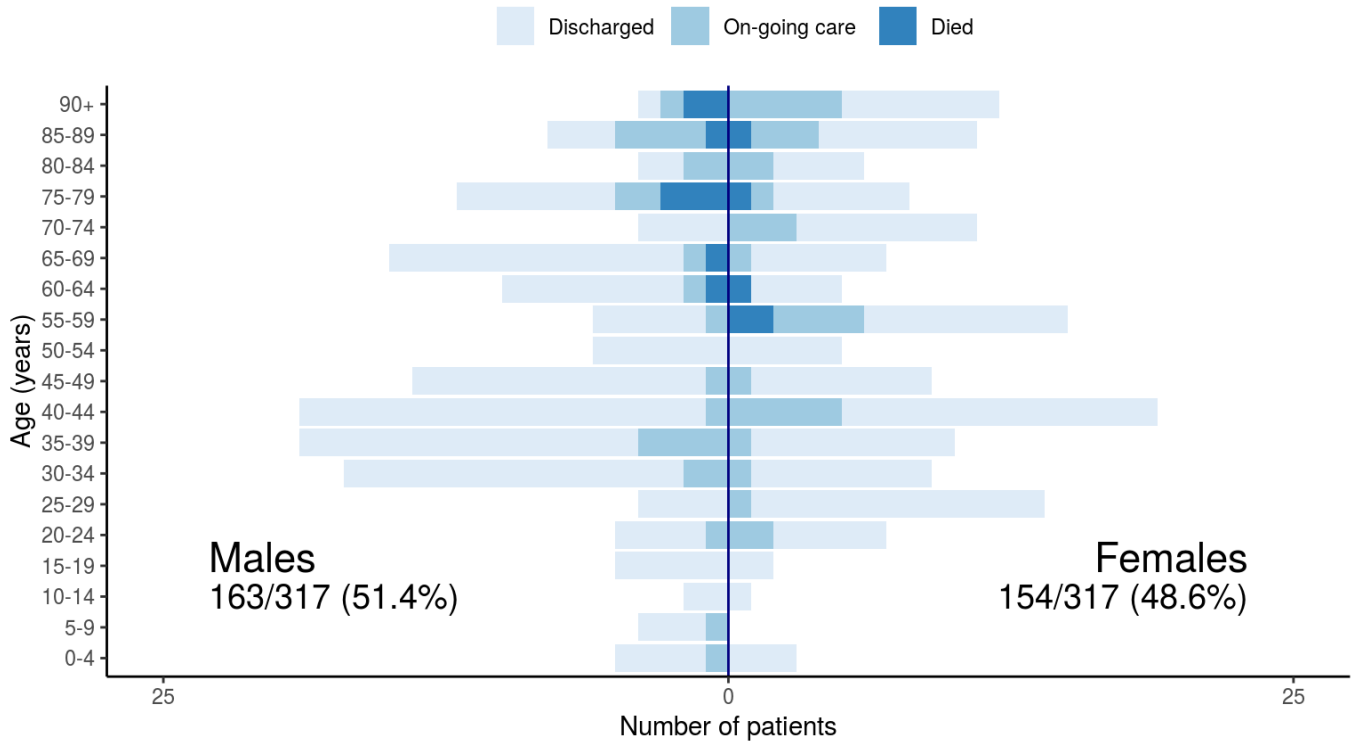
Patients with outcome stratified by age, and sex

All



Patients with outcome stratified by age, and sex

Admitted ≥ 14 days and ≤ 28 days ago



Patient flow

Figure 7A - All patients

N = 832

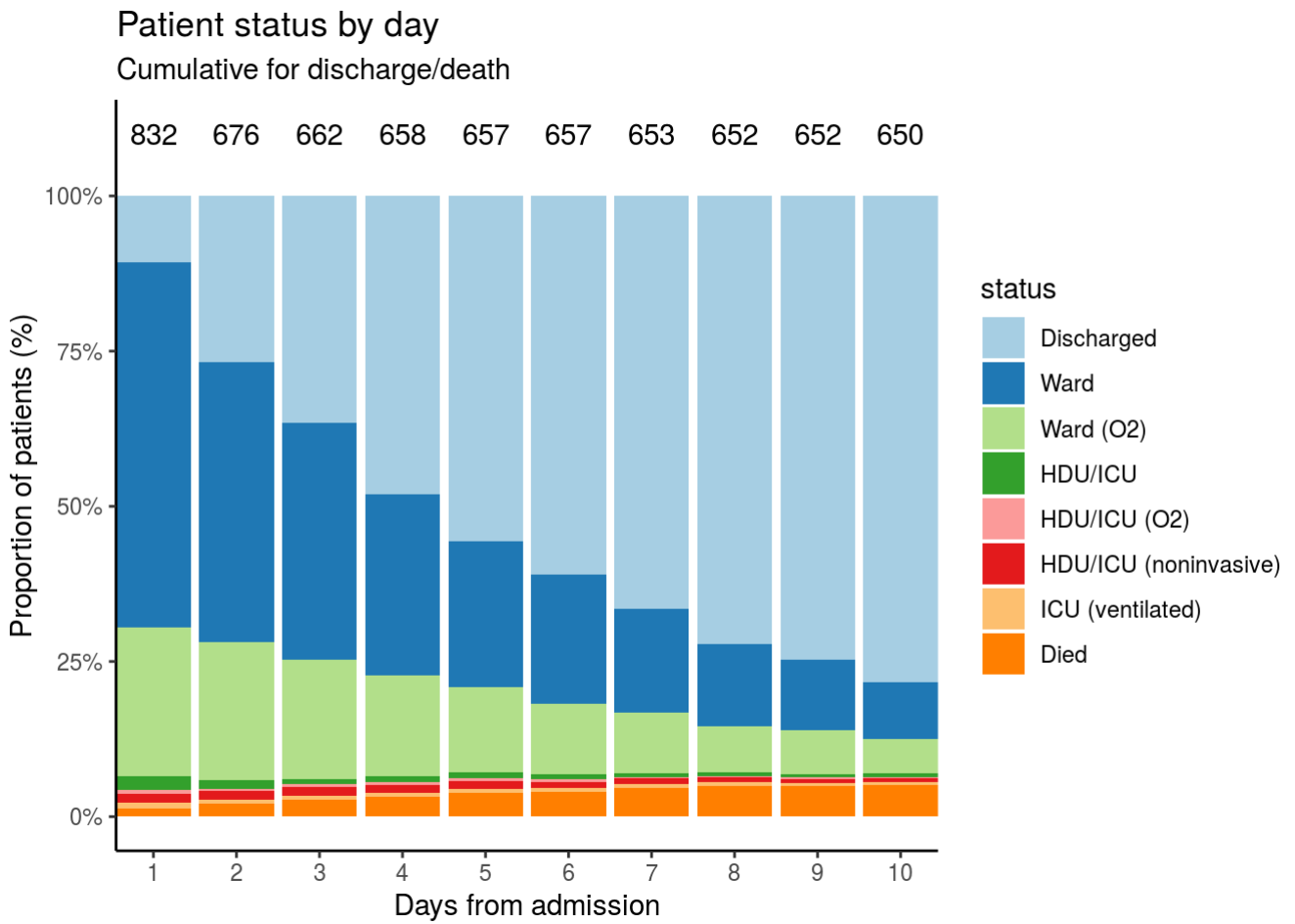
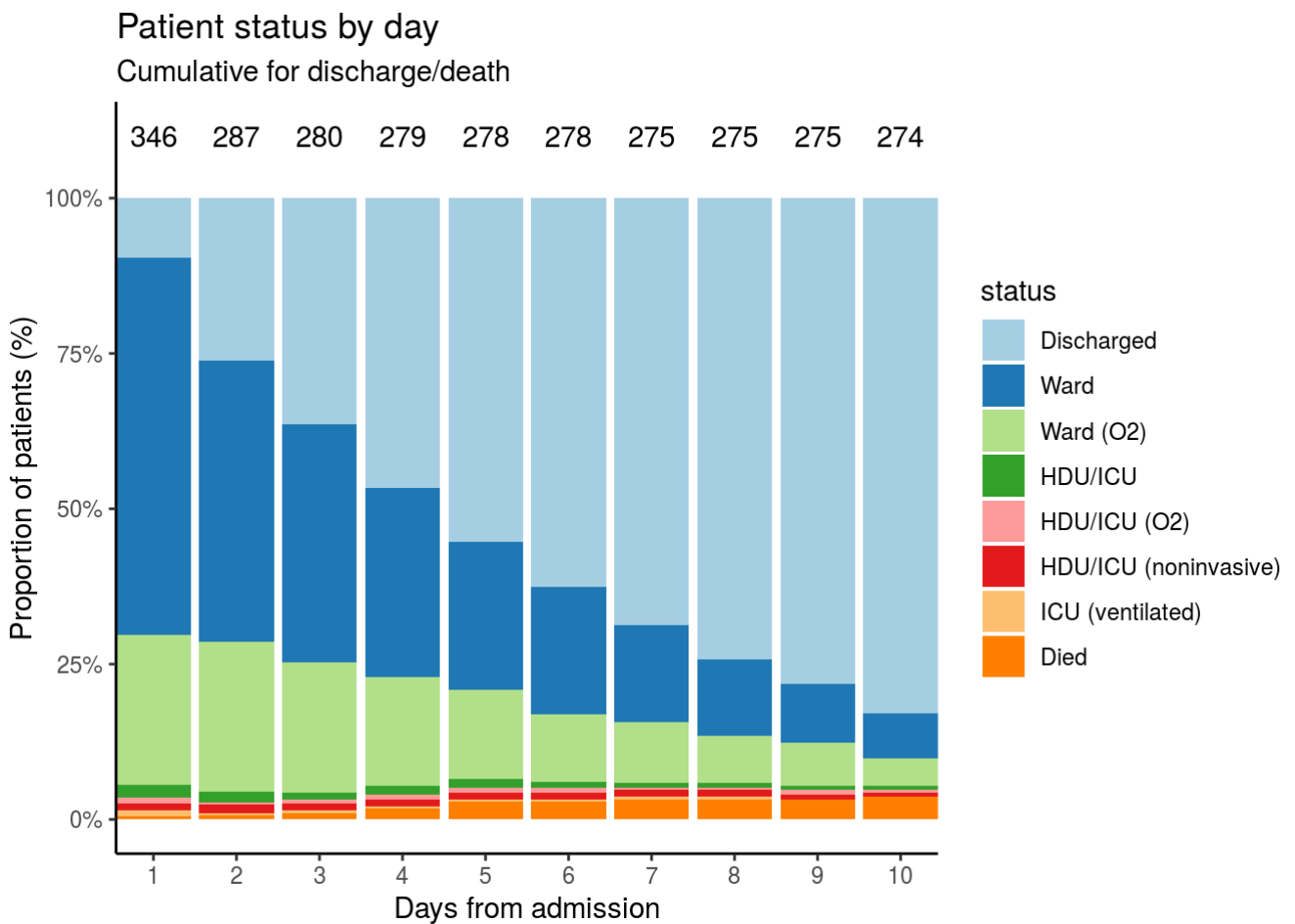


Figure 7B - Patients admitted ≥ 14 days and ≤ 28 days ago

N = 346



Oxygen requirement

Figure 8A - All patients

N = 784

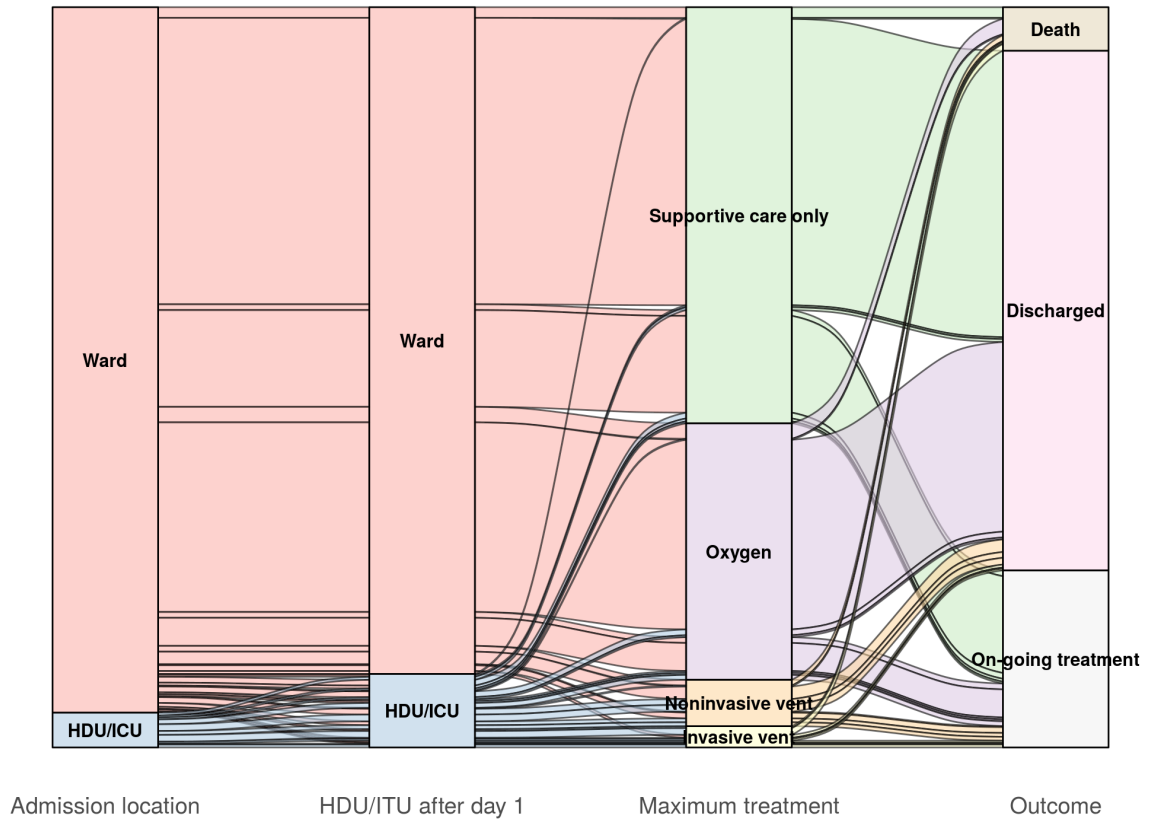


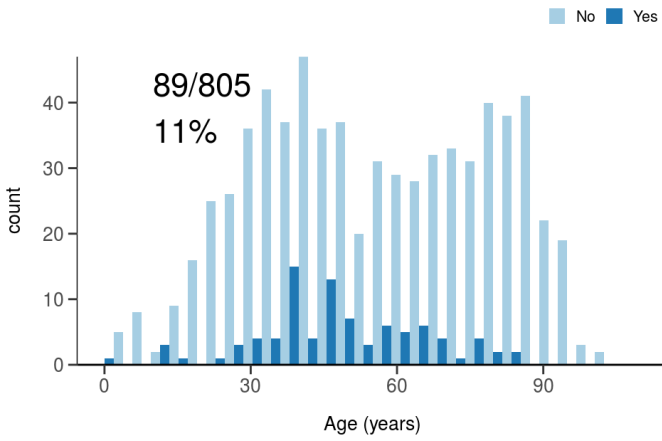
Figure 8B - Patients admitted ≥ 14 days and ≤ 28 days ago

N = 325

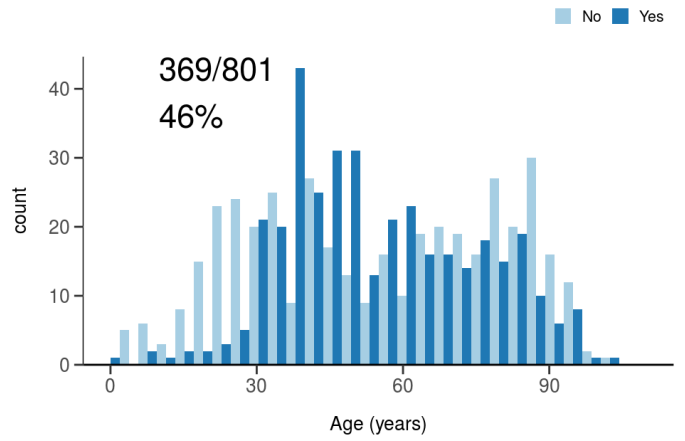
Treatment

Figure 10

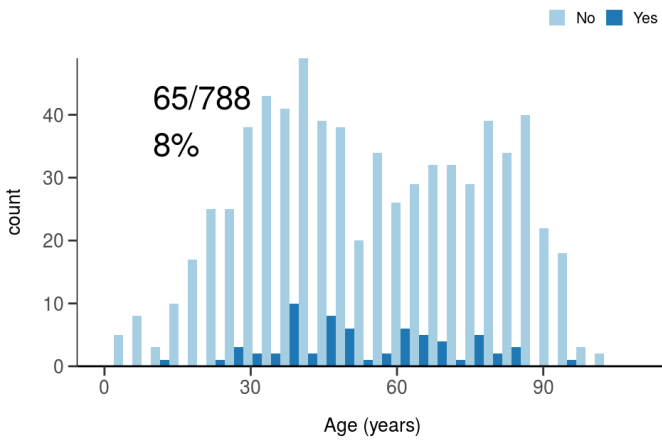
ICU/HDU admission
Figure 10A



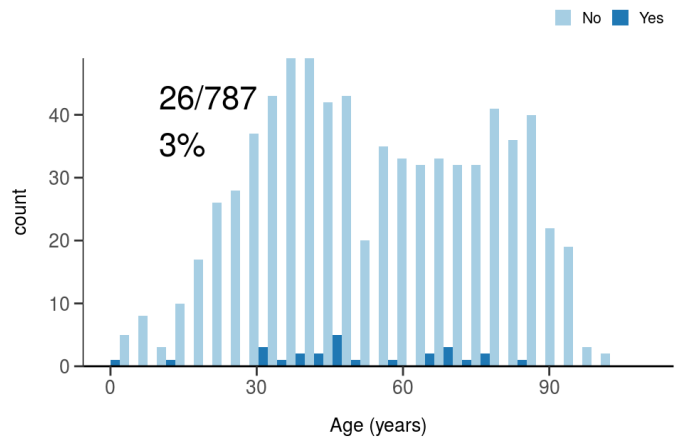
High flow oxygen
Figure 10B



Noninvasive ventilation
Figure 10C



Invasive ventilation
Figure 10D

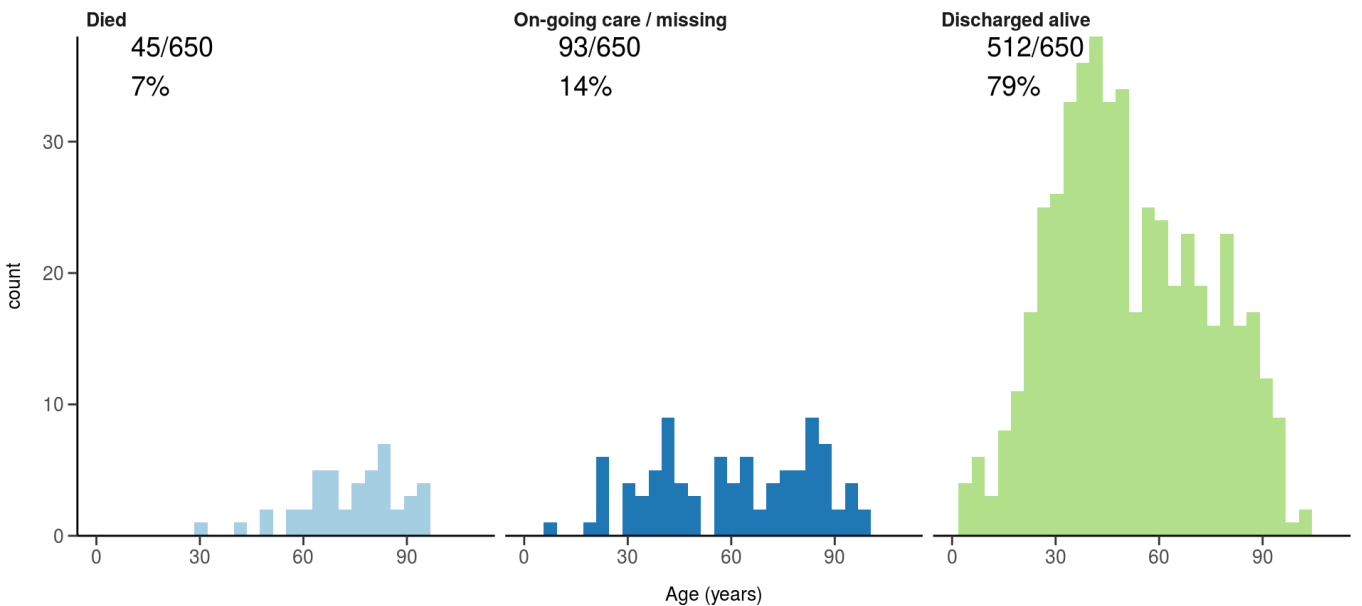


Status in patients admitted ≥ 14 days from today

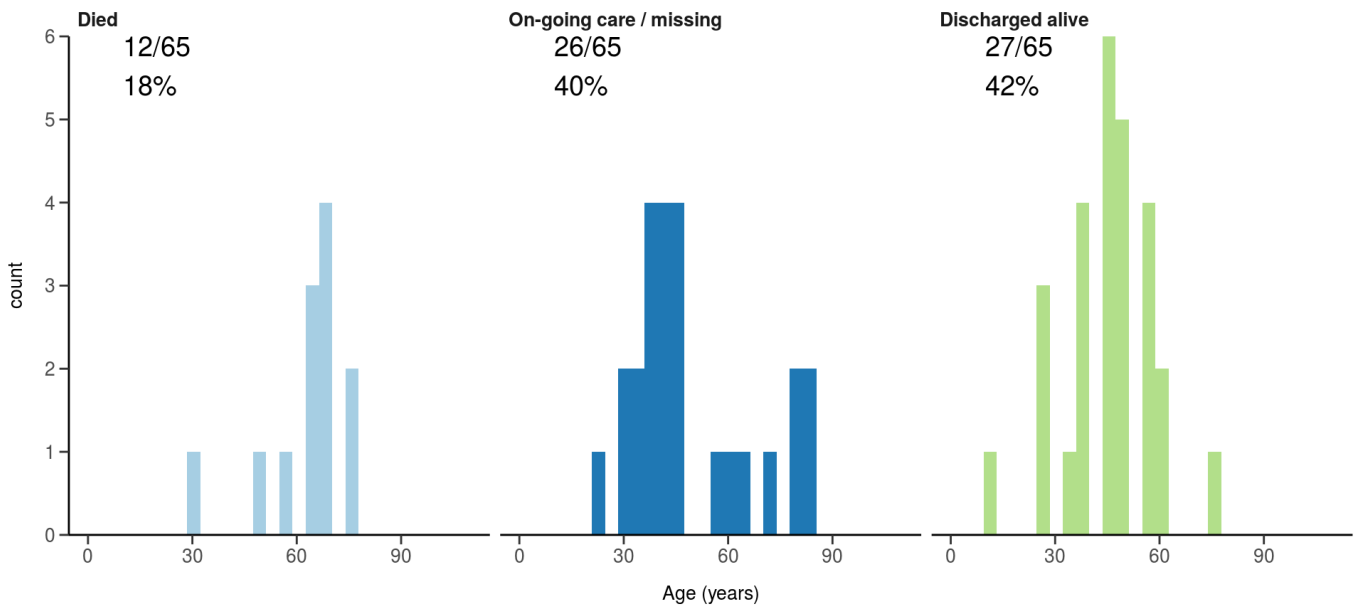
Figure 11

Where outcome is not reported, on-going care is assumed.

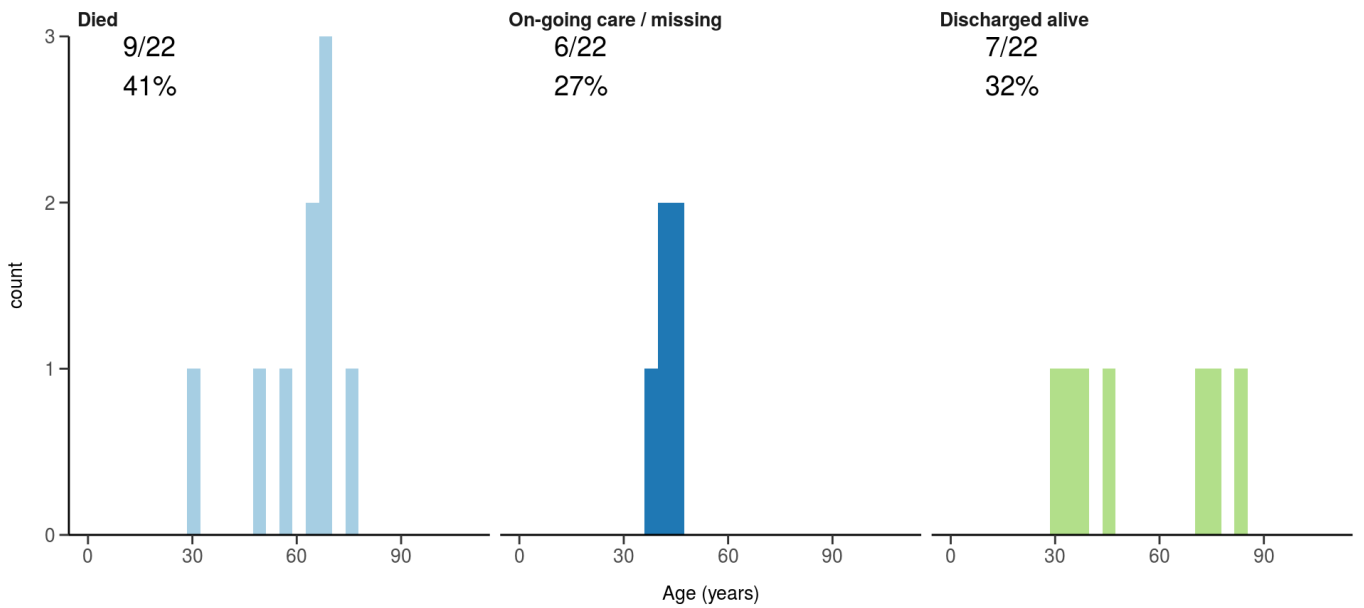
All: status in patients admitted ≥ 14 days ago
Figure 11A



ICU/HDU admissions: status in patients admitted ≥ 14 days ago
Figure 11B



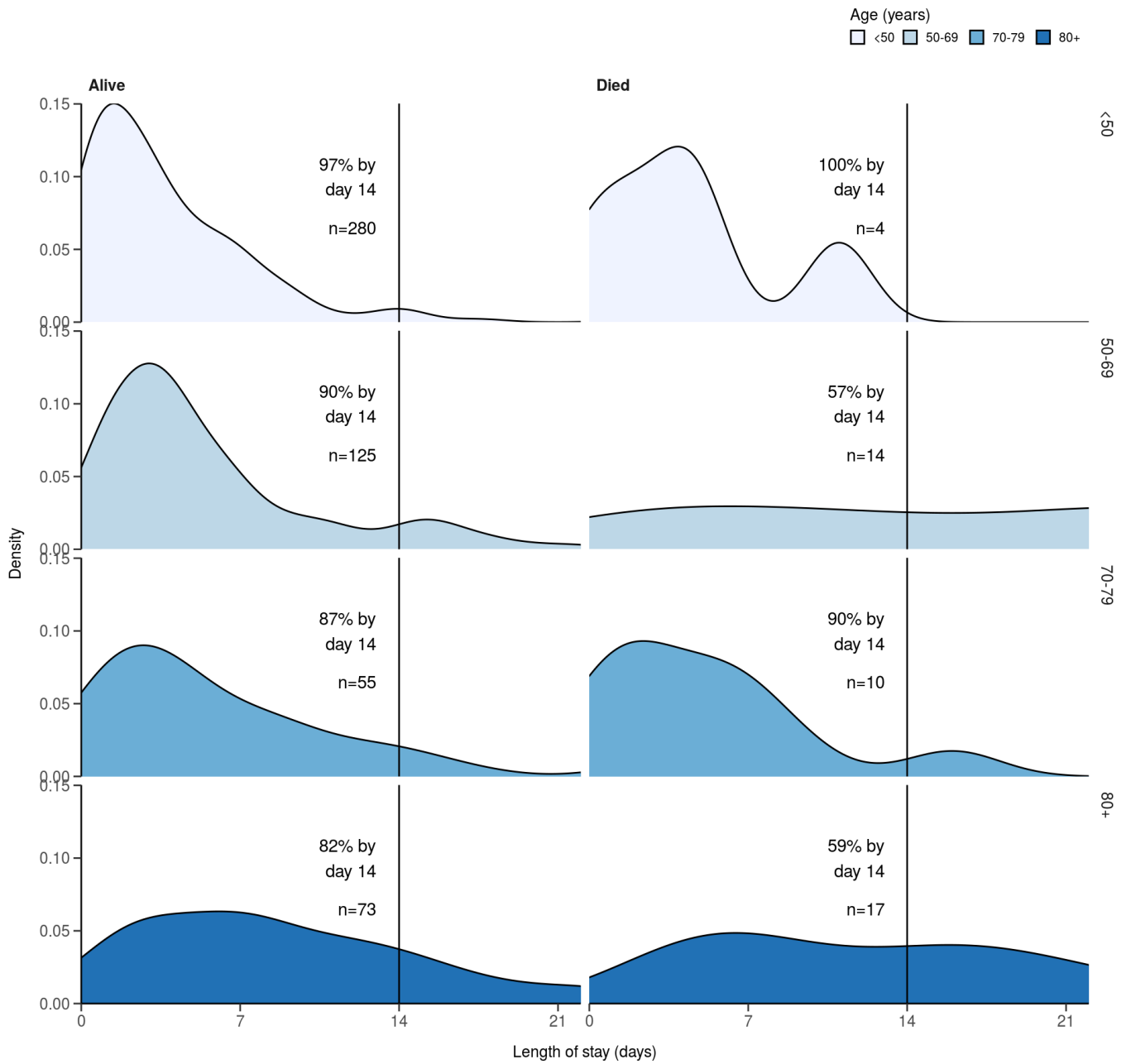
Invasive ventilation: status in patients admitted ≥ 14 days ago
Figure 11c



Length of stay stratified by age

Figure 12

Length of stay stratified by age and mortality
 Proportion who reach outcome by day 14 shown



Data

Table for figure 2A

age.factor	sex	status	n
0-4	Male	Discharged	13
0-4	Male	On-going care	1
0-4	Female	Discharged	9
5-9	Male	Discharged	5
5-9	Male	On-going care	1
5-9	Female	Discharged	3
10-14	Male	Discharged	6

age.factor	sex	status	n
10-14	Female	Discharged	3
10-14	Female	Died	1
15-19	Male	Discharged	9
15-19	Male	On-going care	1
15-19	Female	Discharged	5
15-19	Female	On-going care	1
20-24	Male	Discharged	8
20-24	Male	On-going care	2
20-24	Female	Discharged	15
20-24	Female	On-going care	4
25-29	Male	Discharged	8
25-29	Female	Discharged	31
25-29	Female	On-going care	2
25-29	Female	Died	1
30-34	Male	Discharged	24
30-34	Male	On-going care	4
30-34	Female	Discharged	28
30-34	Female	On-going care	2
35-39	Male	Discharged	29
35-39	Male	On-going care	8
35-39	Female	Discharged	21
35-39	Female	On-going care	3
40-44	Male	Discharged	33
40-44	Male	On-going care	6
40-44	Female	Discharged	22
40-44	Female	On-going care	8
40-44	Female	Died	1
45-49	Male	Discharged	27
45-49	Male	On-going care	3
45-49	Male	Died	1
45-49	Female	Discharged	16
45-49	Female	On-going care	5

age.factor	sex	status	n
45-49	Female	Died	1
50-54	Male	Discharged	18
50-54	Male	On-going care	2
50-54	Female	Discharged	14
50-54	Female	On-going care	2
55-59	Male	Discharged	17
55-59	Male	On-going care	2
55-59	Female	Discharged	17
55-59	Female	On-going care	6
55-59	Female	Died	3
60-64	Male	Discharged	21
60-64	Male	On-going care	5
60-64	Male	Died	3
60-64	Female	Discharged	11
60-64	Female	On-going care	1
60-64	Female	Died	1
65-69	Male	Discharged	22
65-69	Male	On-going care	3
65-69	Male	Died	6
65-69	Female	Discharged	11
65-69	Female	On-going care	3
65-69	Female	Died	2
70-74	Male	Discharged	15
70-74	Male	On-going care	6
70-74	Male	Died	1
70-74	Female	Discharged	14
70-74	Female	On-going care	8
70-74	Female	Died	2
75-79	Male	Discharged	17
75-79	Male	On-going care	9
75-79	Male	Died	4
75-79	Female	Discharged	12

age.factor	sex	status	n
75-79	Female	On-going care	2
75-79	Female	Died	5
80-84	Male	Discharged	14
80-84	Male	On-going care	5
80-84	Male	Died	3
80-84	Female	Discharged	12
80-84	Female	On-going care	5
80-84	Female	Died	5
85-89	Male	Discharged	11
85-89	Male	On-going care	11
85-89	Male	Died	1
85-89	Female	Discharged	15
85-89	Female	On-going care	5
85-89	Female	Died	3
90+	Male	Discharged	8
90+	Male	On-going care	4
90+	Male	Died	4
90+	Female	Discharged	12
90+	Female	On-going care	8
90+	Female	Died	4

Table for figure 2B

age.factor	sex	status	n
0-4	Male	Discharged	4
0-4	Male	On-going care	1
0-4	Female	Discharged	3
5-9	Male	Discharged	3
5-9	Male	On-going care	1
10-14	Male	Discharged	2
10-14	Female	Discharged	1
15-19	Male	Discharged	5
15-19	Female	Discharged	2
20-24	Male	Discharged	4

age.factor	sex	status	n
20-24	Male	On-going care	1
20-24	Female	Discharged	5
20-24	Female	On-going care	2
25-29	Male	Discharged	4
25-29	Female	Discharged	13
25-29	Female	On-going care	1
30-34	Male	Discharged	15
30-34	Male	On-going care	2
30-34	Female	Discharged	8
30-34	Female	On-going care	1
35-39	Male	Discharged	15
35-39	Male	On-going care	4
35-39	Female	Discharged	9
35-39	Female	On-going care	1
40-44	Male	Discharged	18
40-44	Male	On-going care	1
40-44	Female	Discharged	14
40-44	Female	On-going care	5
45-49	Male	Discharged	13
45-49	Male	On-going care	1
45-49	Female	Discharged	8
45-49	Female	On-going care	1
50-54	Male	Discharged	6
50-54	Female	Discharged	5
55-59	Male	Discharged	5
55-59	Male	On-going care	1
55-59	Female	Discharged	9
55-59	Female	On-going care	4
55-59	Female	Died	2
60-64	Male	Discharged	8
60-64	Male	On-going care	1
60-64	Male	Died	1

age.factor	sex	status	n
60-64	Female	Discharged	4
60-64	Female	Died	1
65-69	Male	Discharged	13
65-69	Male	On-going care	1
65-69	Male	Died	1
65-69	Female	Discharged	6
65-69	Female	On-going care	1
70-74	Male	Discharged	4
70-74	Female	Discharged	8
70-74	Female	On-going care	3
75-79	Male	Discharged	7
75-79	Male	On-going care	2
75-79	Male	Died	3
75-79	Female	Discharged	6
75-79	Female	On-going care	1
75-79	Female	Died	1
80-84	Male	Discharged	2
80-84	Male	On-going care	2
80-84	Female	Discharged	4
80-84	Female	On-going care	2
85-89	Male	Discharged	3
85-89	Male	On-going care	4
85-89	Male	Died	1
85-89	Female	Discharged	7
85-89	Female	On-going care	3
85-89	Female	Died	1
90+	Male	Discharged	1
90+	Male	On-going care	1
90+	Male	Died	2
90+	Female	Discharged	7
90+	Female	On-going care	5

Table for figure 7A

day	status	n
1	Discharged	89
1	Ward	489
1	Ward (O2)	200
1	HDU/ICU	18
1	HDU/ICU (O2)	6
1	HDU/ICU (noninvasive)	11
1	ICU (ventilated)	8
1	Died	11
2	Discharged	181
2	Ward	305
2	Ward (O2)	150
2	HDU/ICU	10
2	HDU/ICU (O2)	2
2	HDU/ICU (noninvasive)	10
2	ICU (ventilated)	4
2	Died	14
3	Discharged	242
3	Ward	253
3	Ward (O2)	127
3	HDU/ICU	5
3	HDU/ICU (O2)	3
3	HDU/ICU (noninvasive)	10
3	ICU (ventilated)	4
3	Died	18
4	Discharged	316
4	Ward	192
4	Ward (O2)	107
4	HDU/ICU	6
4	HDU/ICU (O2)	3
4	HDU/ICU (noninvasive)	9
4	ICU (ventilated)	4
4	Died	21

day	status	n
5	Discharged	366
5	Ward	154
5	Ward (O2)	90
5	HDU/ICU	6
5	HDU/ICU (O2)	3
5	HDU/ICU (noninvasive)	9
5	ICU (ventilated)	4
5	Died	25
6	Discharged	401
6	Ward	137
6	Ward (O2)	74
6	HDU/ICU	5
6	HDU/ICU (O2)	3
6	HDU/ICU (noninvasive)	7
6	ICU (ventilated)	4
6	Died	26
7	Discharged	434
7	Ward	110
7	Ward (O2)	63
7	HDU/ICU	4
7	HDU/ICU (O2)	2
7	HDU/ICU (noninvasive)	6
7	ICU (ventilated)	4
7	Died	30
8	Discharged	471
8	Ward	86
8	Ward (O2)	48
8	HDU/ICU	5
8	HDU/ICU (O2)	1
8	HDU/ICU (noninvasive)	5
8	ICU (ventilated)	4
8	Died	32

day	status	n
9	Discharged	487
9	Ward	74
9	Ward (O2)	46
9	HDU/ICU	4
9	HDU/ICU (O2)	2
9	HDU/ICU (noninvasive)	4
9	ICU (ventilated)	3
9	Died	32
10	Discharged	509
10	Ward	60
10	Ward (O2)	36
10	HDU/ICU	4
10	HDU/ICU (O2)	1
10	HDU/ICU (noninvasive)	4
10	ICU (ventilated)	3
10	Died	33

Table for figure 7B

day	status	n
1	Discharged	33
1	Ward	210
1	Ward (O2)	84
1	HDU/ICU	7
1	HDU/ICU (O2)	3
1	HDU/ICU (noninvasive)	4
1	ICU (ventilated)	3
1	Died	2
2	Discharged	75
2	Ward	130
2	Ward (O2)	69
2	HDU/ICU	5
2	HDU/ICU (O2)	1
2	HDU/ICU (noninvasive)	4

day	status	n
2	ICU (ventilated)	1
2	Died	2
3	Discharged	102
3	Ward	107
3	Ward (O2)	59
3	HDU/ICU	3
3	HDU/ICU (O2)	2
3	HDU/ICU (noninvasive)	3
3	ICU (ventilated)	1
3	Died	3
4	Discharged	130
4	Ward	85
4	Ward (O2)	49
4	HDU/ICU	4
4	HDU/ICU (O2)	2
4	HDU/ICU (noninvasive)	3
4	ICU (ventilated)	1
4	Died	5
5	Discharged	154
5	Ward	66
5	Ward (O2)	40
5	HDU/ICU	4
5	HDU/ICU (O2)	2
5	HDU/ICU (noninvasive)	3
5	ICU (ventilated)	1
5	Died	8
6	Discharged	174
6	Ward	57
6	Ward (O2)	30
6	HDU/ICU	3
6	HDU/ICU (O2)	2
6	HDU/ICU (noninvasive)	3

day	status	n
6	ICU (ventilated)	1
6	Died	8
7	Discharged	189
7	Ward	43
7	Ward (O2)	27
7	HDU/ICU	2
7	HDU/ICU (O2)	1
7	HDU/ICU (noninvasive)	3
7	ICU (ventilated)	1
7	Died	9
8	Discharged	204
8	Ward	34
8	Ward (O2)	21
8	HDU/ICU	2
8	HDU/ICU (O2)	1
8	HDU/ICU (noninvasive)	3
8	ICU (ventilated)	1
8	Died	9
9	Discharged	215
9	Ward	26
9	Ward (O2)	19
9	HDU/ICU	2
9	HDU/ICU (O2)	2
9	HDU/ICU (noninvasive)	2
9	Died	9
10	Discharged	227
10	Ward	20
10	Ward (O2)	12
10	HDU/ICU	2
10	HDU/ICU (O2)	1
10	HDU/ICU (noninvasive)	2
10	Died	10