

Dynamic CO-CIN report to SAGE and NERVTAG

Executive summary

Includes patients admitted on or after 01 May 2021

There are 651 patients included in CO-CIN. Of these, 34 patient(s) have died and 62 required ICU. 408 have been discharged home.

Admission

Figure 1

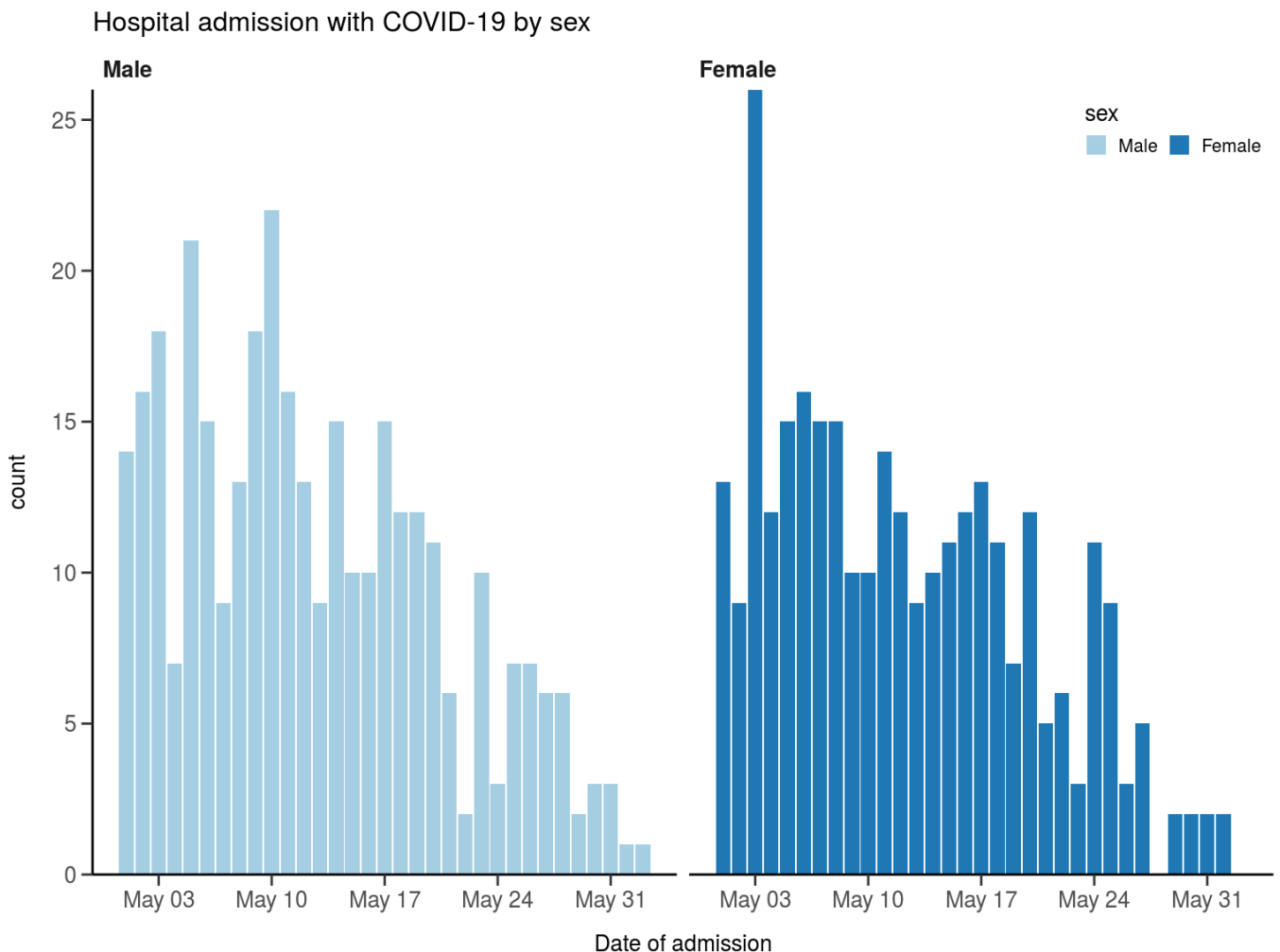
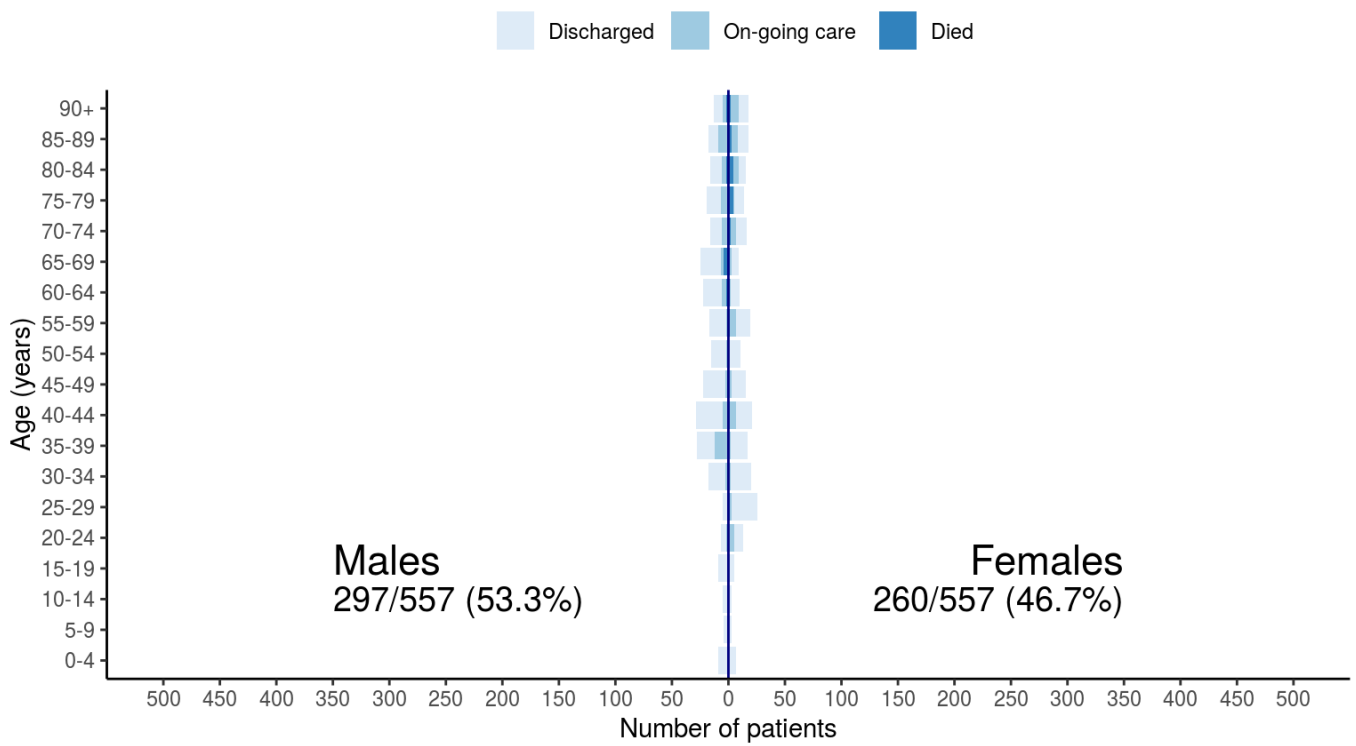


Figure 2

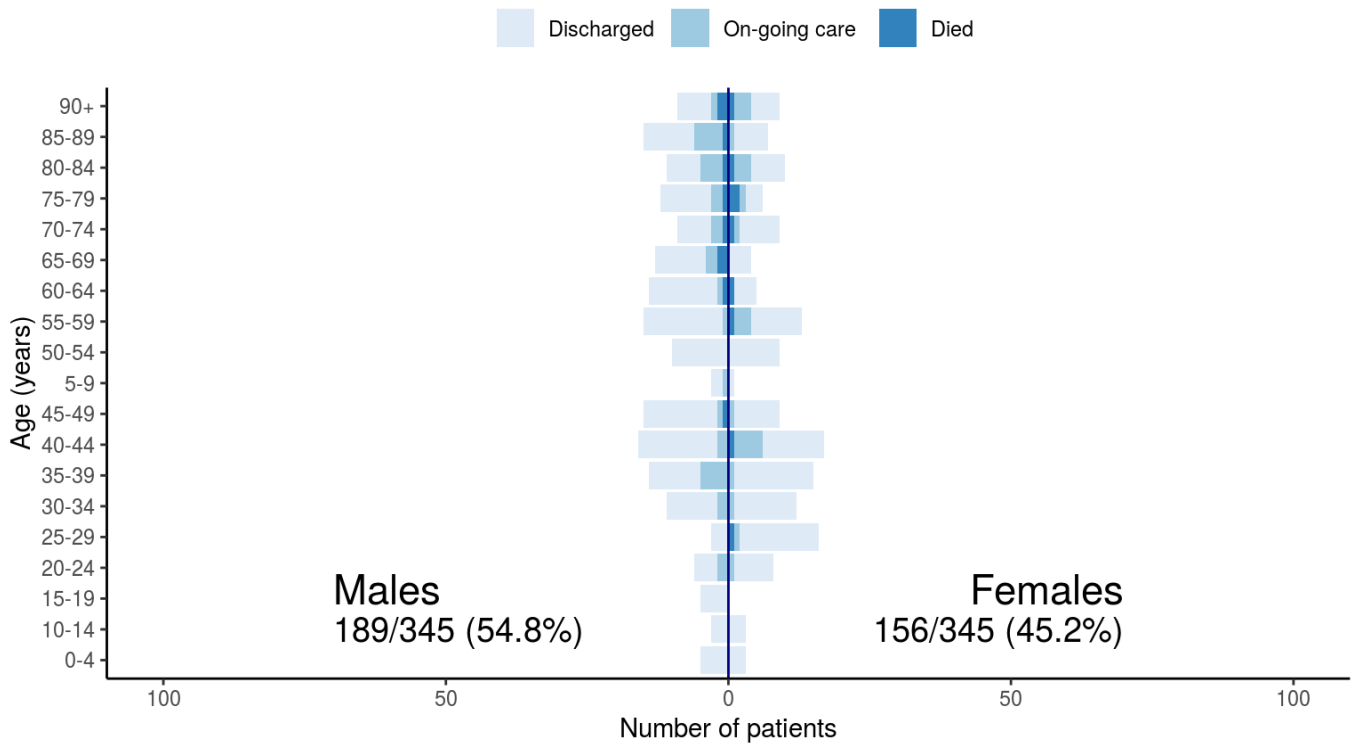
Patients with outcome stratified by age, and sex

All



Patients with outcome stratified by age, and sex

Admitted ≥ 14 days and ≤ 28 days ago

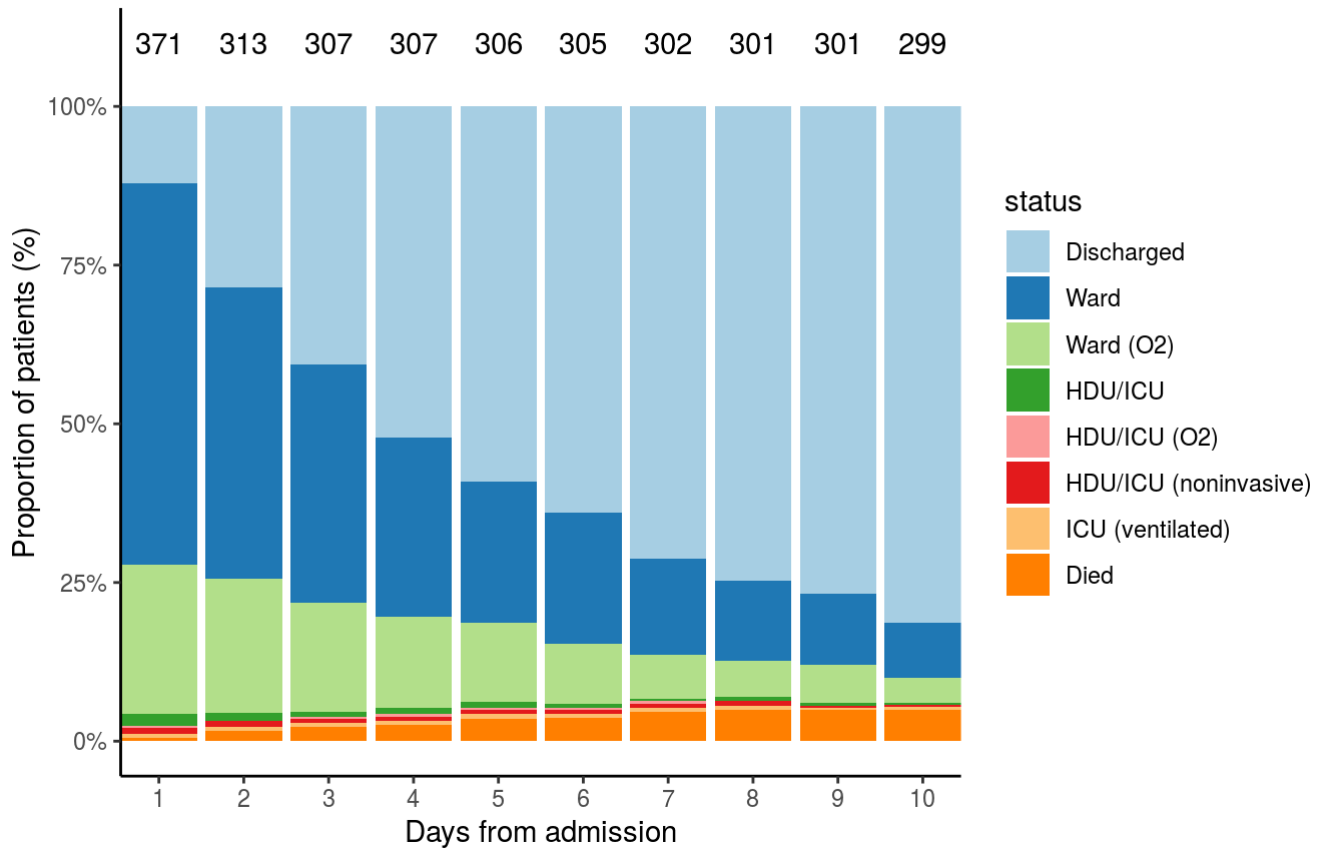


Patient flow

Figure 7B - Patients admitted ≥ 14 days and ≤ 28 days ago

N = 371

Patient status by day
 Cumulative for discharge/death



Oxygen requirement

Figure 8A - All patients

N = 572

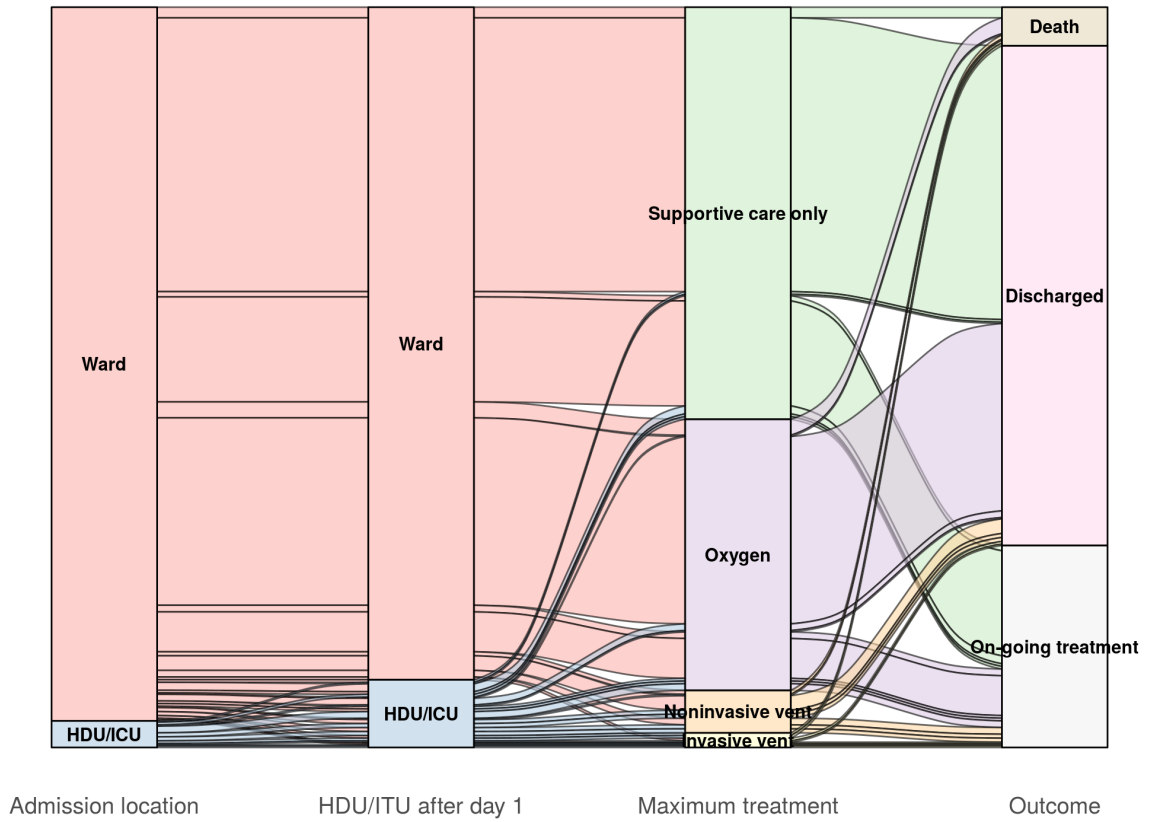


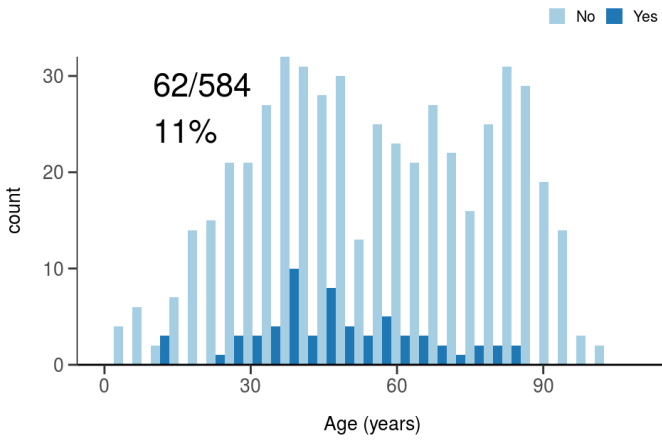
Figure 8B - Patients admitted ≥ 14 days and ≤ 28 days ago

N = 346

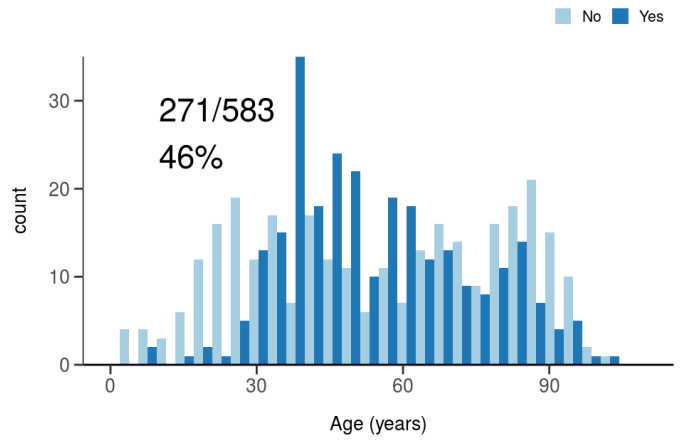
Treatment

Figure 10

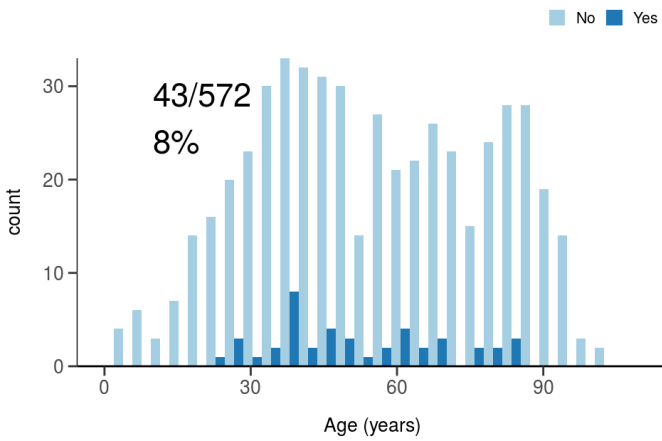
ICU/HDU admission
Figure 10A



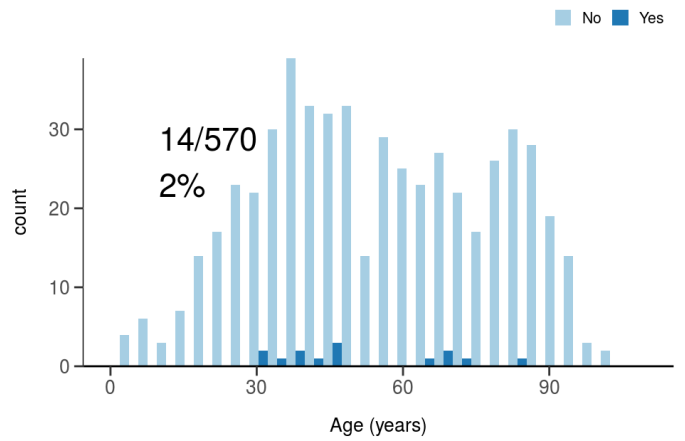
High flow oxygen
Figure 10B



Noninvasive ventilation
Figure 10C



Invasive ventilation
Figure 10D

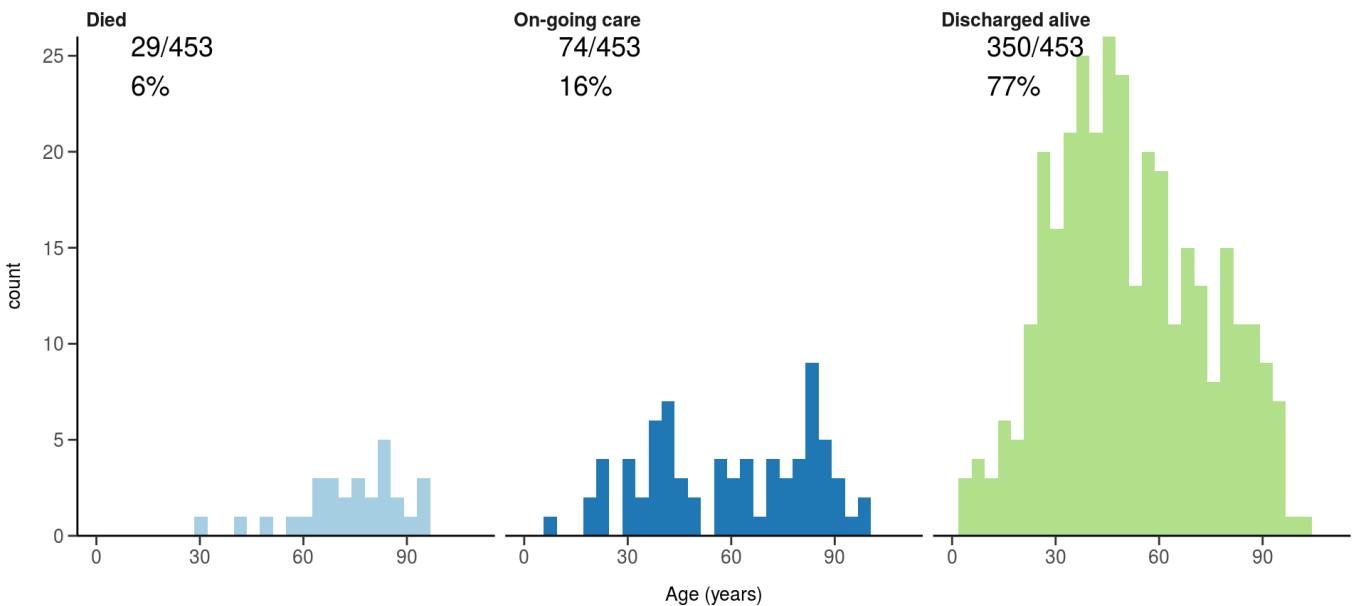


Status in patients admitted ≥ 14 days from today

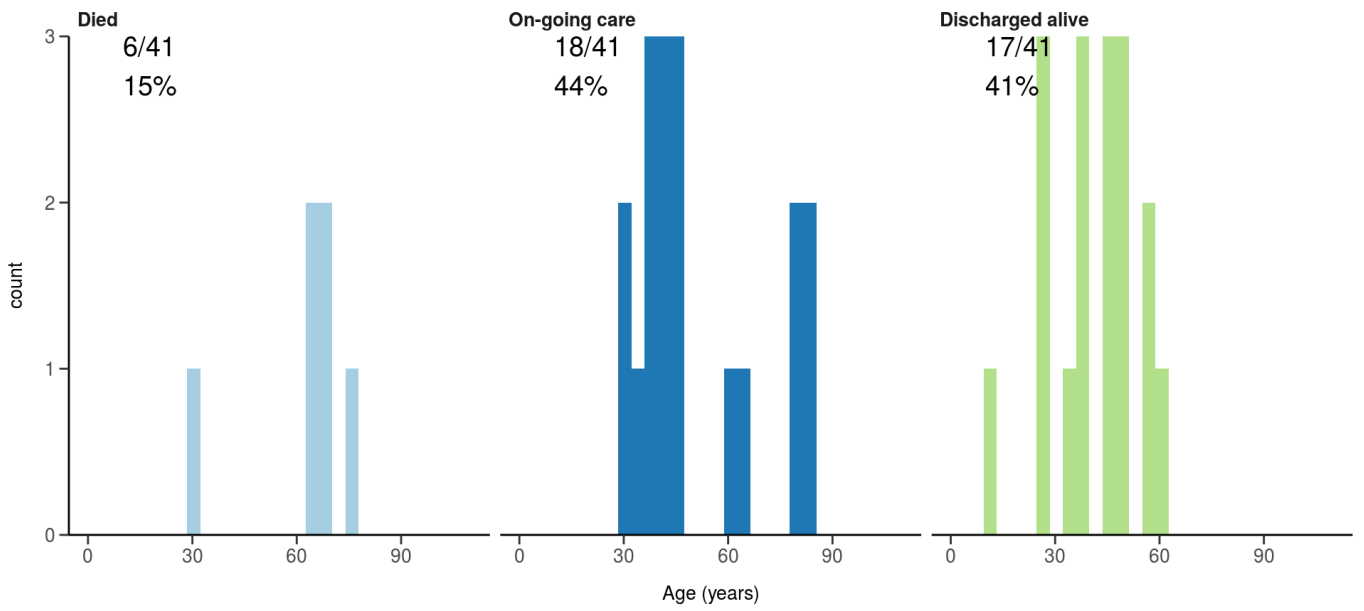
Figure 11

Where outcome is not reported, on-going care is assumed.

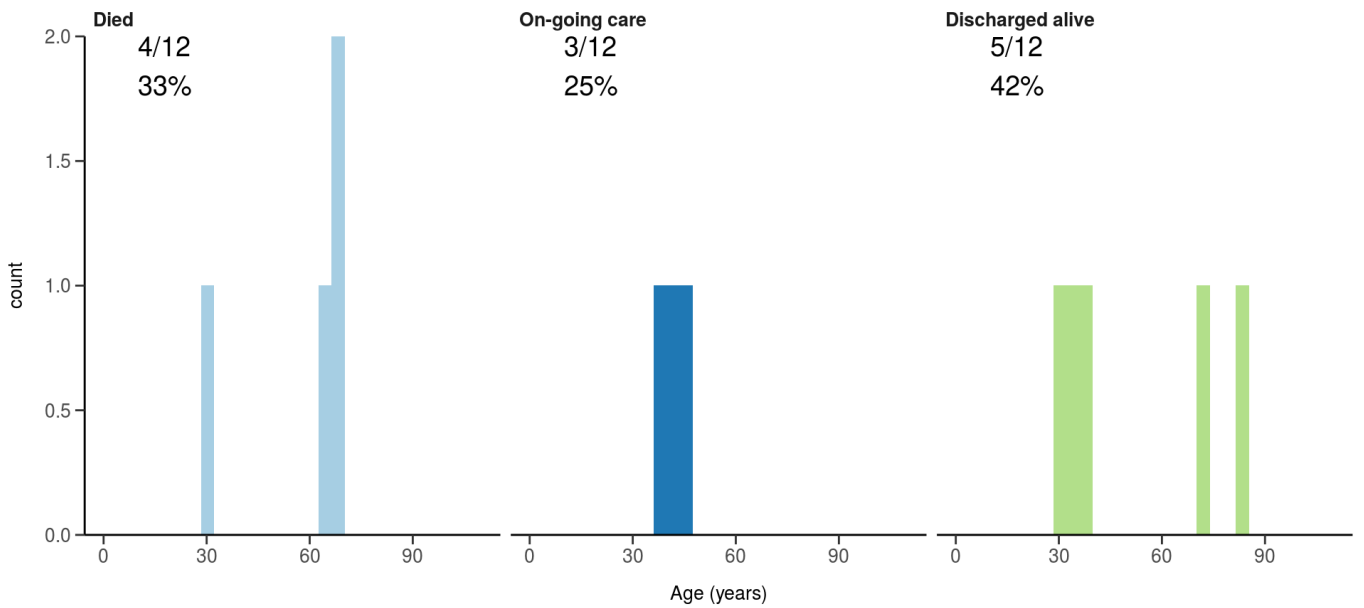
All: status in patients admitted ≥ 14 days ago
Figure 11A



ICU/HDU admissions: status in patients admitted ≥ 14 days ago
Figure 11B



Invasive ventilation: status in patients admitted ≥ 14 days ago
Figure 11c



Length of stay stratified by age

Figure 12

Length of stay stratified by age and mortality
 Proportion who reach outcome by day 14 shown

Age (years)
 □ <50 □ 50-69 □ 70-79 □ 80+

