



Public Health  
England



Test and Trace

# BRIEFING ENGLAND

ENHANCED RESPONSE FRAMEWORK OVERVIEW

Week commencing 14 June 2021

OFFICIAL

# High level summary – Regions case rates in 7 days

## 02 June 2021 to 08 June 2021

	Individuals tested per day per 100,000 population		Percentage individuals test positive		Case rate per 100,000 population		Case rate per 100,000 population aged 60 years and over		Case rate per 100,000 population aged 11-16 year olds		Case rate per 100,000 population aged 17-21 year olds		Confirmed cases in previous 7 days	Specimens tested in TaqPath labs	Specimens with SGTF tested in TaqPath labs
	7-day moving average	7-day change. %	7-day moving average	7-day change. %	7-day moving average	7-day change. %	7-day moving average	7-day change. %	7-day moving average	7-day change. %	7-day moving average	7-day change. %	Last 7 days	7-day change. %	7-day change. %
East Midlands	349	Increase	1.6%	Increase	42	Increase	8	Increase	102	Increase	113	Increase	2,043	57	12
East of England	400	Increase	1.1%	Increase	34	Increase	8	Increase	55	Increase	96	Increase	2,193	52	9
London	460	Increase	1.8%	Increase	61	Increase	13	Increase	72	Increase	123	Increase	5,489	24	7
North East	374	Increase	2.1%	Increase	57	Increase	10	Increase	104	Increase	171	Increase	1,519	61	13
North West	451	Increase	5.6%	Increase	177	Increase	31	Increase	278	Increase	525	Increase	13,017	60	3
South East	428	Increase	1.2%	Increase	38	Increase	7	Increase	68	Increase	108	Increase	3,378	38	3
South West	403	Increase	0.9%	Increase	28	Increase	6	Increase	31	Increase	107	Increase	1,589	19	22
West Midlands	374	Increase	1.7%	Increase	46	Increase	10	Increase	81	Increase	112	Increase	2,700	55	6
Yorkshire and Humber	356	Increase	2.7%	Increase	69	Increase	12	Increase	121	Increase	189	Increase	3,796	55	21
<b>England</b>	<b>424</b>	<b>Increase</b>	<b>2.1%</b>	<b>Increase</b>	<b>64</b>	<b>Increase</b>	<b>12</b>	<b>Increase</b>	<b>102</b>	<b>Increase</b>	<b>178</b>	<b>Increase</b>	<b>35,971</b>	<b>43</b>	<b>7</b>

### Narrative

- Weekly case rates in all ages group have increased across all regions.
- The North West has the highest case rates in all ages, 60+, 11-16, and 17-21 years.
- The highest weekly case rates overall is among 17-21 year olds.

### Data Definitions

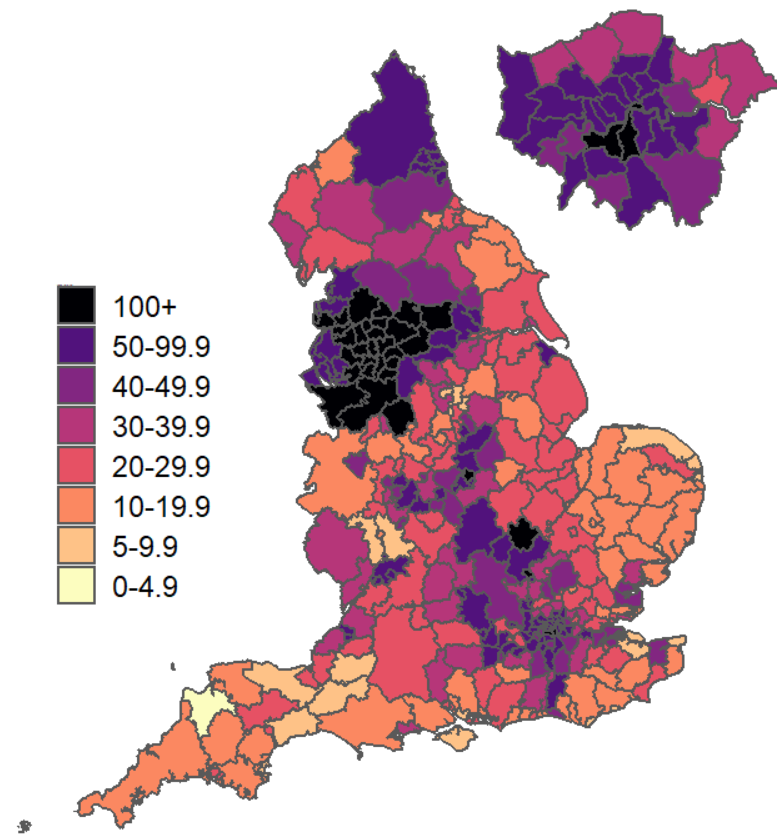
SGTF definition	S-gene target failure is a reliable marker of alpha variant
Individuals tested using PCR per day per 100,000 (7-DMA)	Number of individuals tested using PCR per 100,000 population
Percentage Individuals PCR test positive (7-DMA)	Percentage of individuals tested using PCR with specimen dates in the most recent 7-days period who were positive for SARS-CoV-2
Community outbreaks	Number of outbreaks reported to PHE during the 7 day period, excluding those reported from secondary healthcare and care home settings.

Data for specimens taken between 02 June 2021 to 8 June 2021 (7 day).

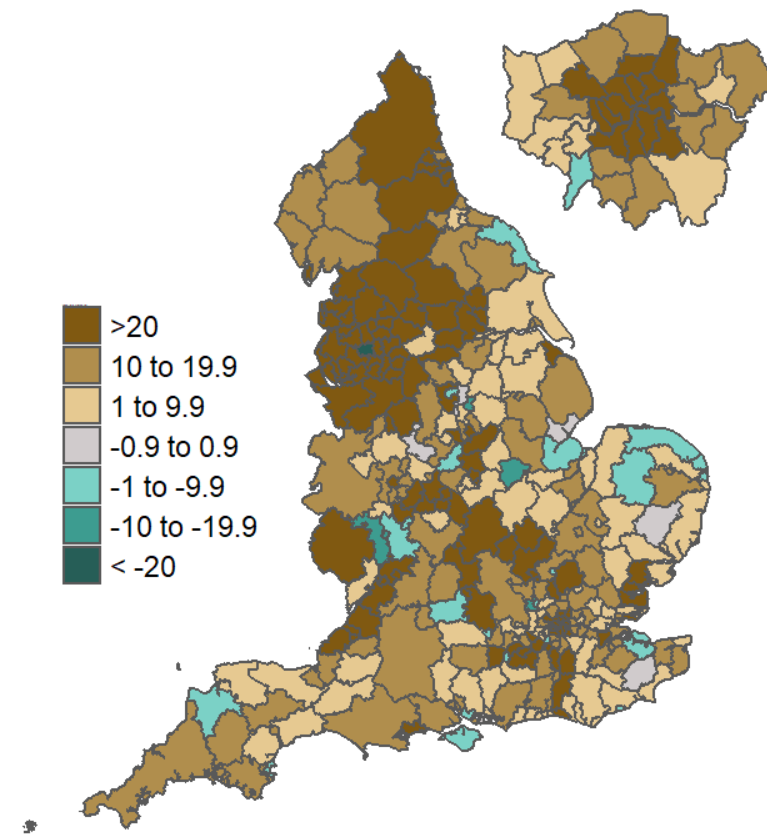
Data from PHE.

# Weekly case rate and rate of change per 100,000 population by Local Authority

Weekly case rates per 100,000 population  
by local authority  
02 Jun to 08 Jun 2021



Absolute case rate change per 100,000 population  
by local authority  
26 May to 01 Jun 2021 and 02 Jun to 08 Jun 2021



Data from SGSS; Pillar 1 and 2 testing. Figure by Outbreak Surveillance Team, Public Health England. Contains National Statistics data including 2019 population estimates. Crown copyright and database right 2021

# West Midlands

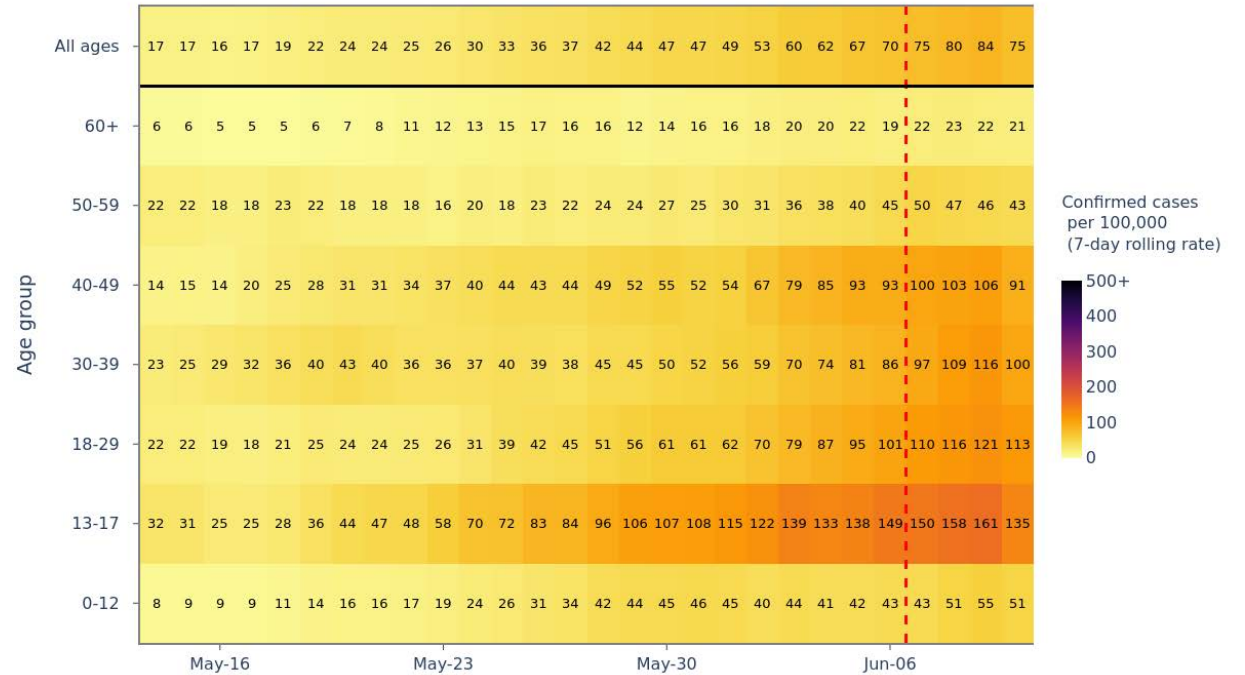
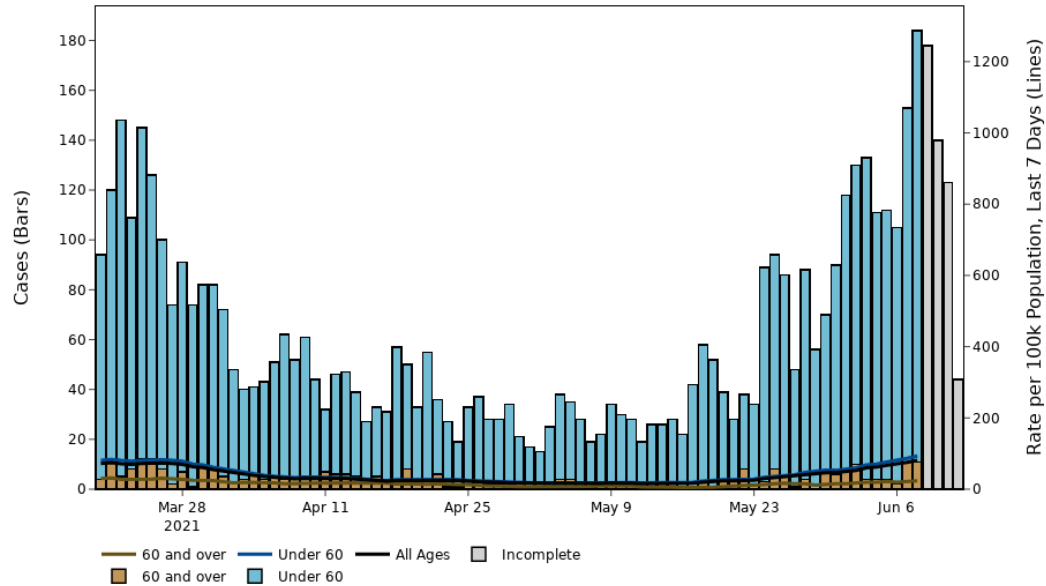
Areas in case rate order:  
Birmingham

# Birmingham

Birmingham	Individuals tested per day per 100,000 population		Percentage individuals test positive		Case rate per 100,000 population		Case rate per 100,000 population aged 60 years and over		Case rate per 100,000 population aged 11 - 16 years olds		Case rate per 100,000 population aged 17 - 21 years olds		Confirmed cases (last 7-days)
	7-day moving average	7-day change. %	7-day moving average	7-day change. %	7-day moving average	7-day change. %	7-day moving average	7-day change. %	7-day moving average	7-day change. %	7-day moving average	7-day change. %	
Birmingham	352	Increase	3.3%	Increase	81	Increase	23	Increase	144	Increase	137	Increase	928

Data for specimens taken between 02 June 2021 to 8 June 2021 (7 day).

Birmingham



Data Source – coronavirus.data.gov.uk

The red dashed line denotes the 4 most recent days data which are provisional

# North West

## Areas in case rate order:

Blackpool

Cheshire East

Cheshire West and Chester

Warrington

Liverpool

Sefton

Knowsley

Wirral

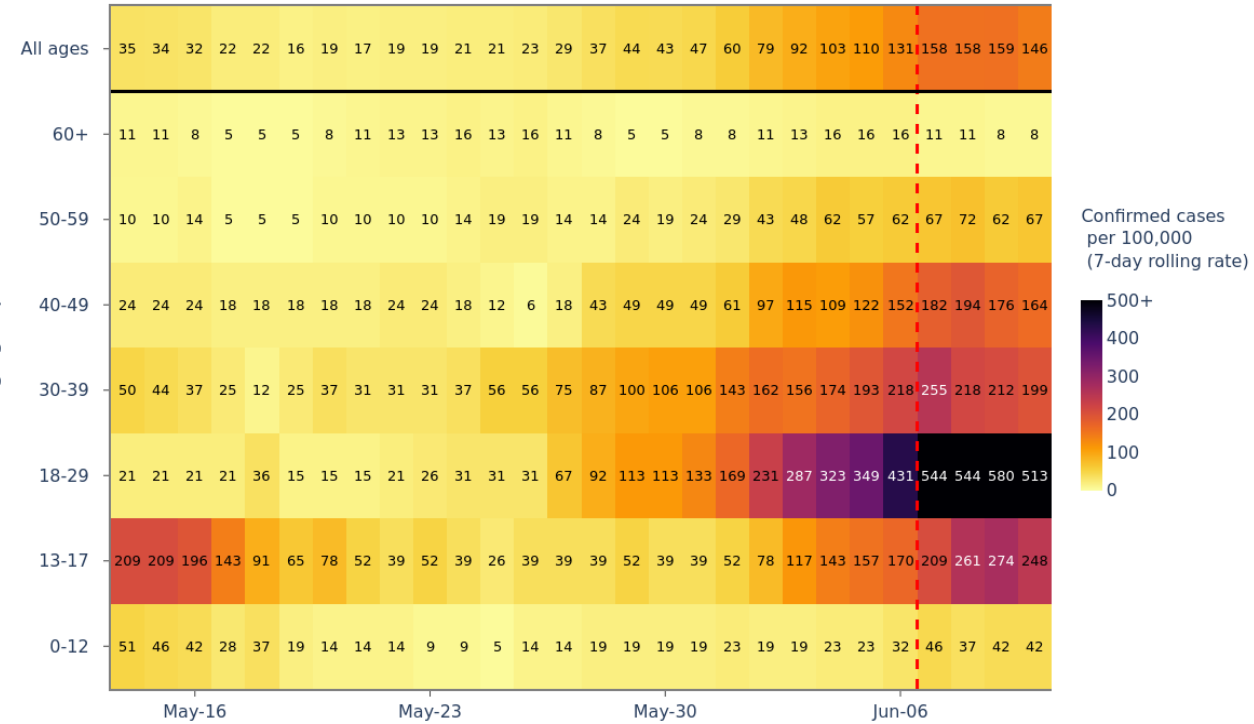
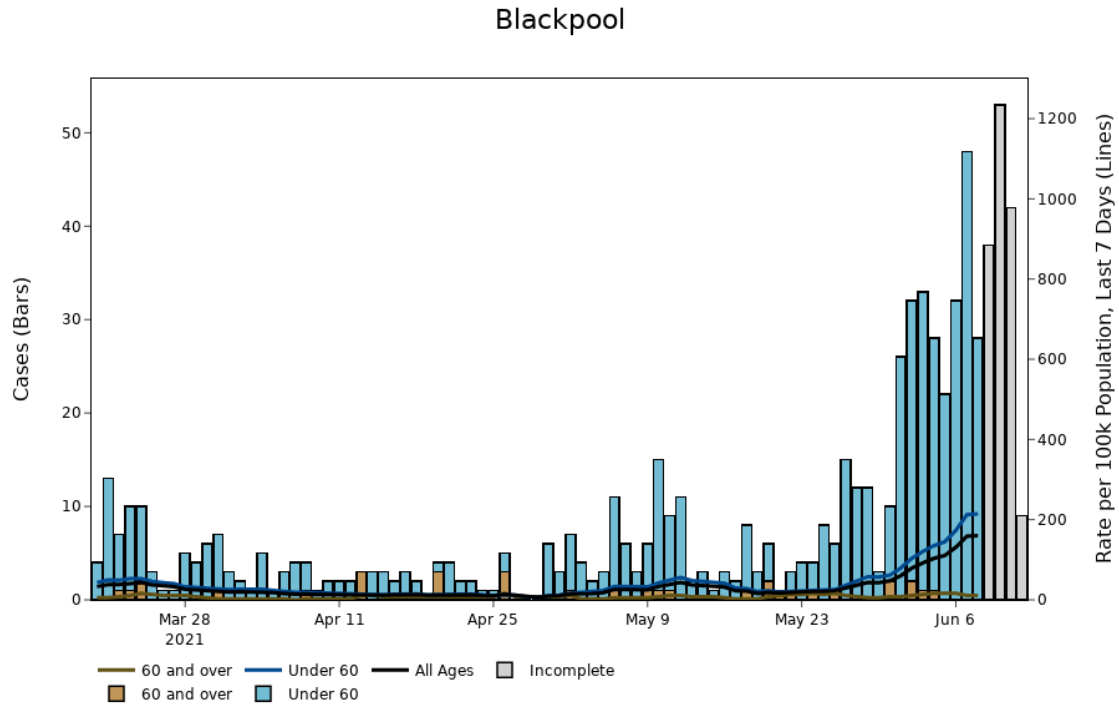
St. Helens

Halton

	Individuals tested per day per 100,000 population		Percentage individuals test positive		Case rate per 100,000 population		Case rate per 100,000 population aged 60 years and over		Case rate per 100,000 population aged 11 - 16 years olds		Case rate per 100,000 population aged 17 - 21 years olds		Confirmed cases (last 7-days)
	7-day moving average	7-day change. %	7-day moving average	7-day change. %	7-day moving average	7-day change. %	7-day moving average	7-day change. %	7-day moving average	7-day change. %	7-day moving average	7-day change. %	
Blackpool	607	Increase	3.5%	Increase	160	Increase	11	Increase	171	Increase	817	Increase	223
Cheshire East	472	Increase	3.9%	Increase	127	Increase	20	Increase	281	Increase	593	Increase	487
Cheshire West and Chester	1016	Increase	1.6%	Decrease	115	Increase	14	No change	297	Increase	423	Increase	396
Warrington	445	Increase	3.2%	Increase	104	Increase	14	Increase	109	Increase	667	Increase	218
Liverpool	303	Increase	3.5%	Increase	85	Increase	26	Increase	42	Increase	193	Increase	424
Sefton	381	Increase	2.9%	Increase	84	Increase	17	Increase	123	Increase	368	Increase	231
Knowsley	326	Increase	2.3%	Increase	62	Increase	11	Decrease	48	Increase	171	Increase	94
Wirral	373	Increase	2.2%	Increase	62	Increase	10	Decrease	132	Increase	191	Increase	200
St. Helens	372	Increase	2.1%	Increase	52	Increase	21	Increase	25	Decrease	204	Increase	94
Halton	357	Increase	1.7%	Increase	51	Increase	6	Increase	42	Increase	210	Increase	66

Data for specimens taken between 02 June 2021 to 8 June 2021 (7 day).

# Blackpool



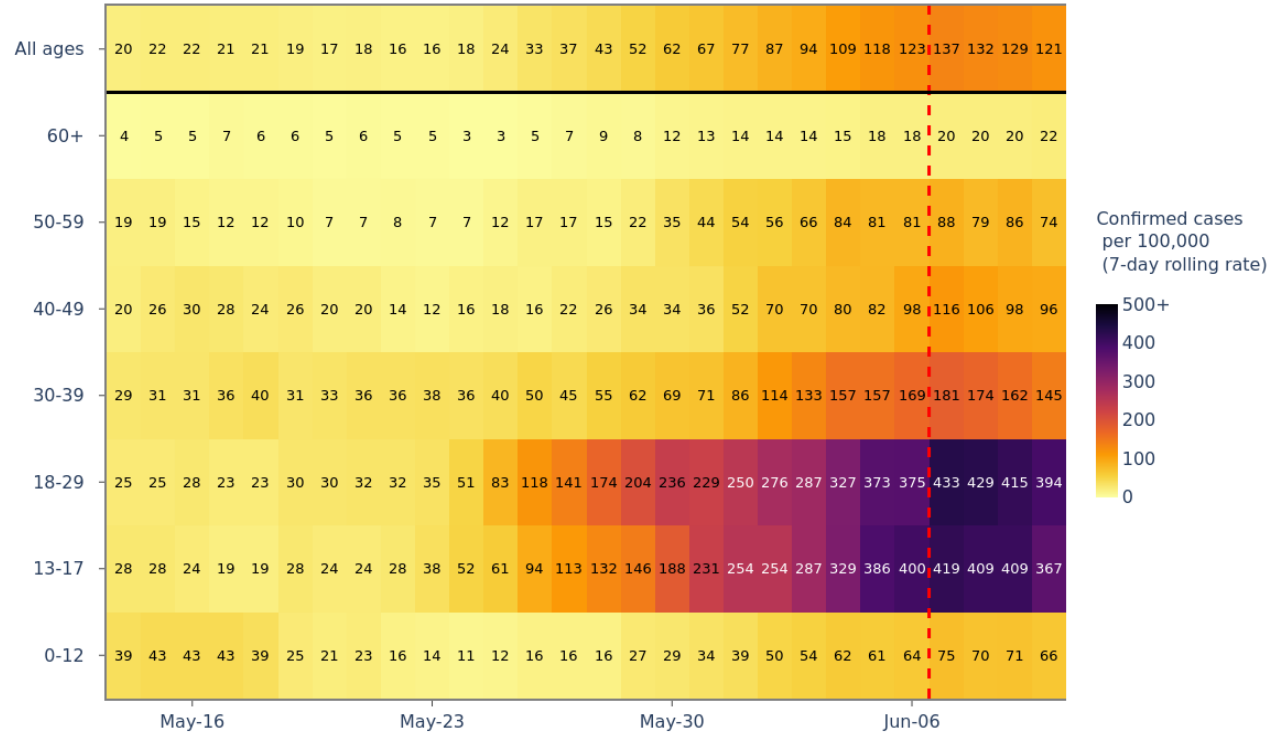
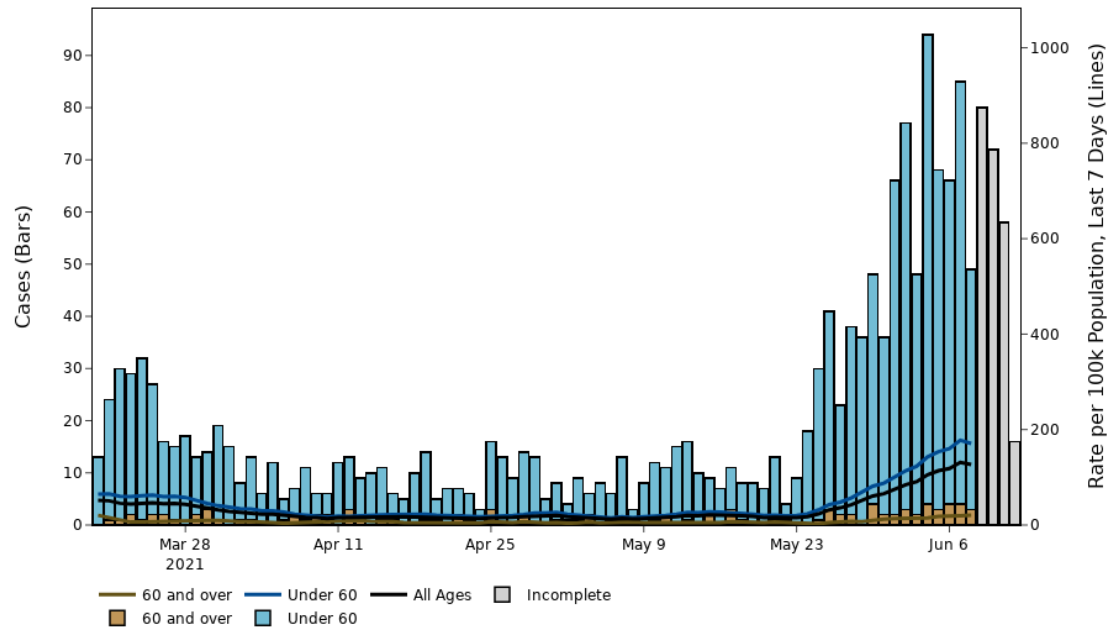
Data Source – coronavirus.data.gov.uk

The red dashed line denotes the 4 most recent days data which are provisional



# Cheshire East

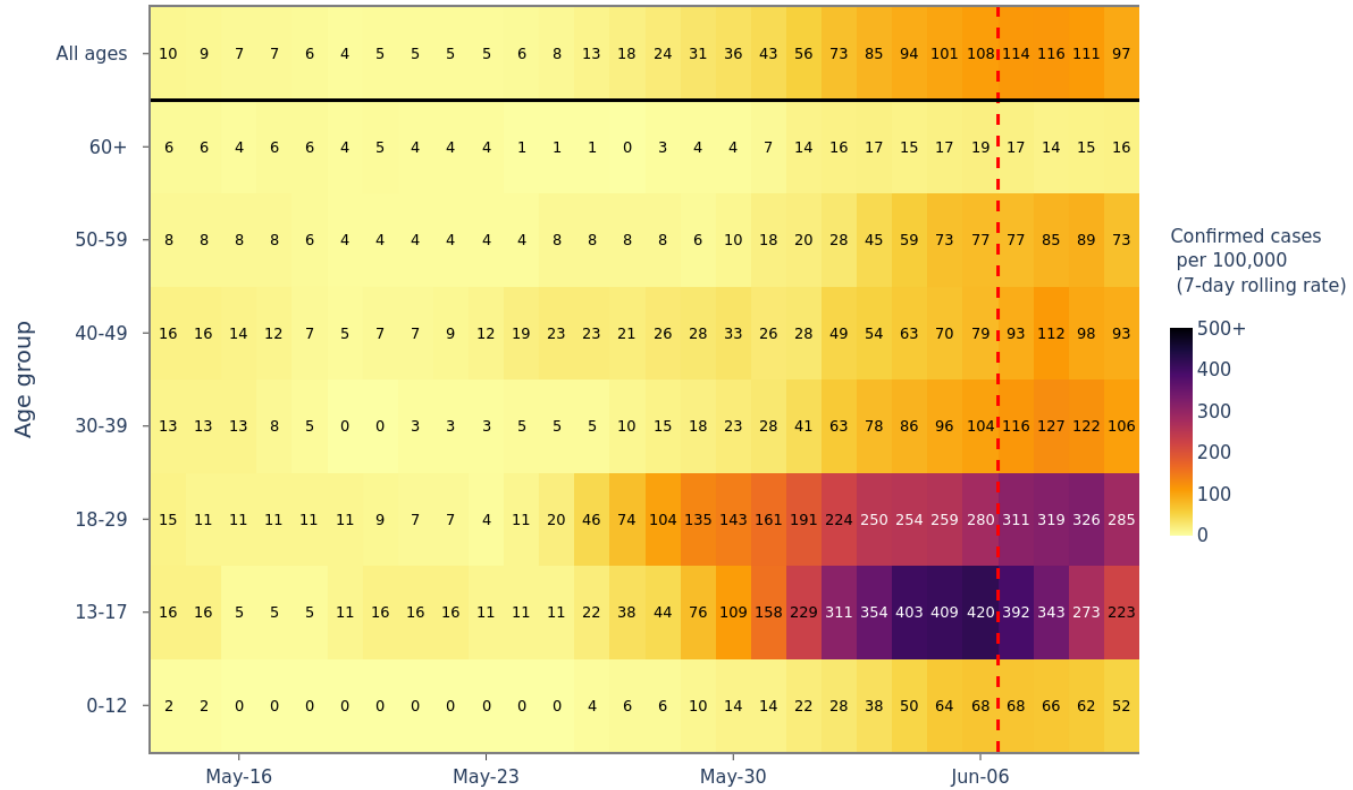
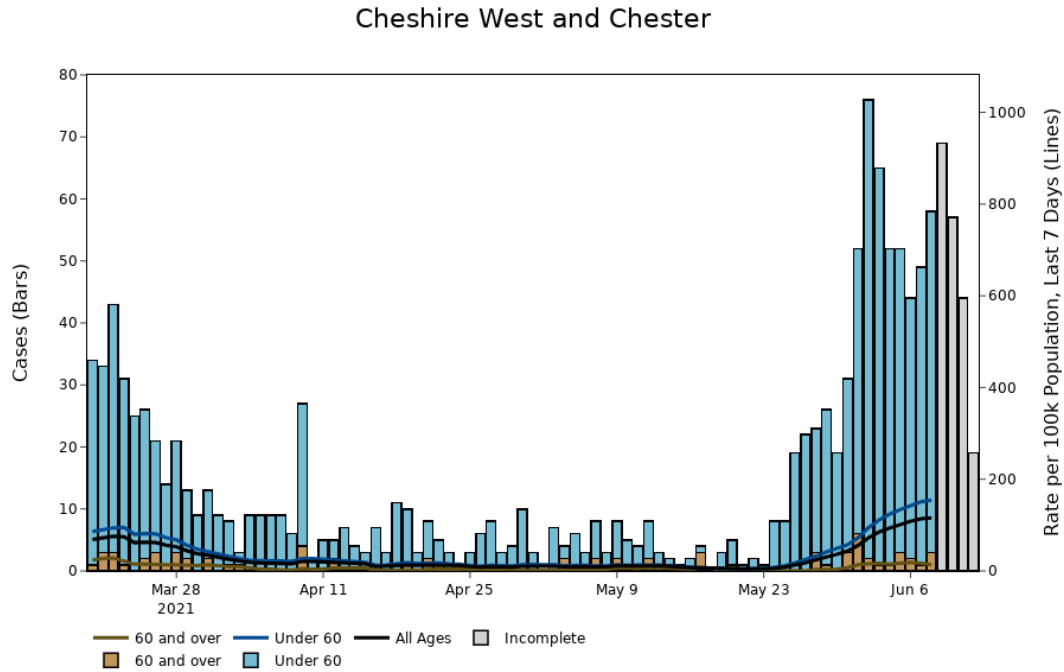
Cheshire East



Data Source – coronavirus.data.gov.uk

The red dashed line denotes the 4 most recent days data which are provisional

# Cheshire West and Chester

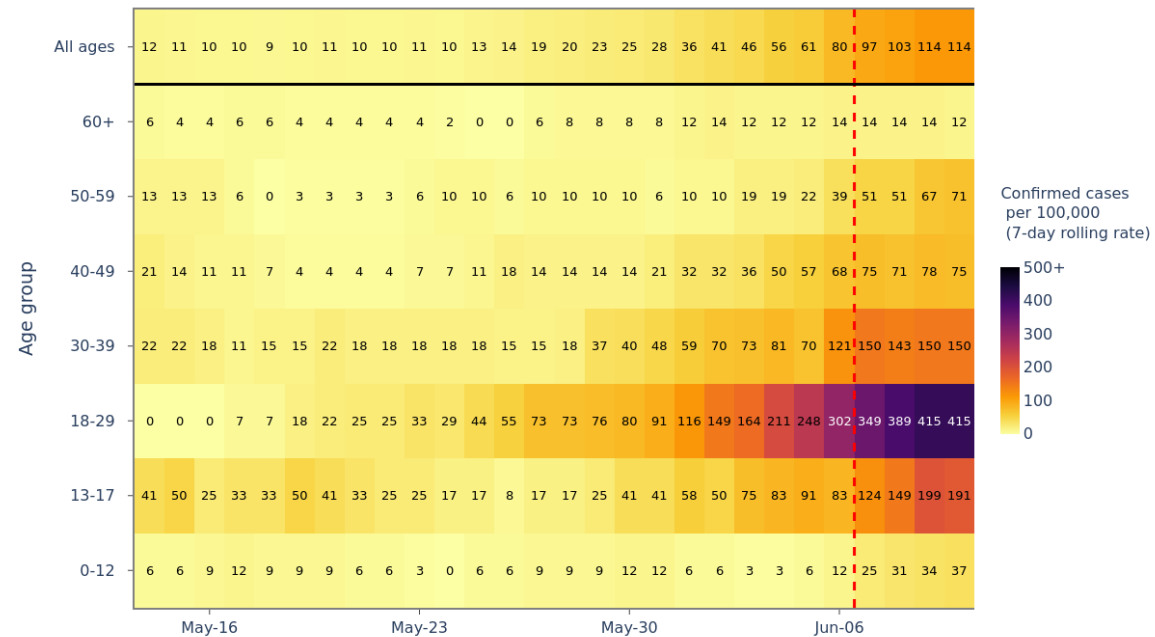
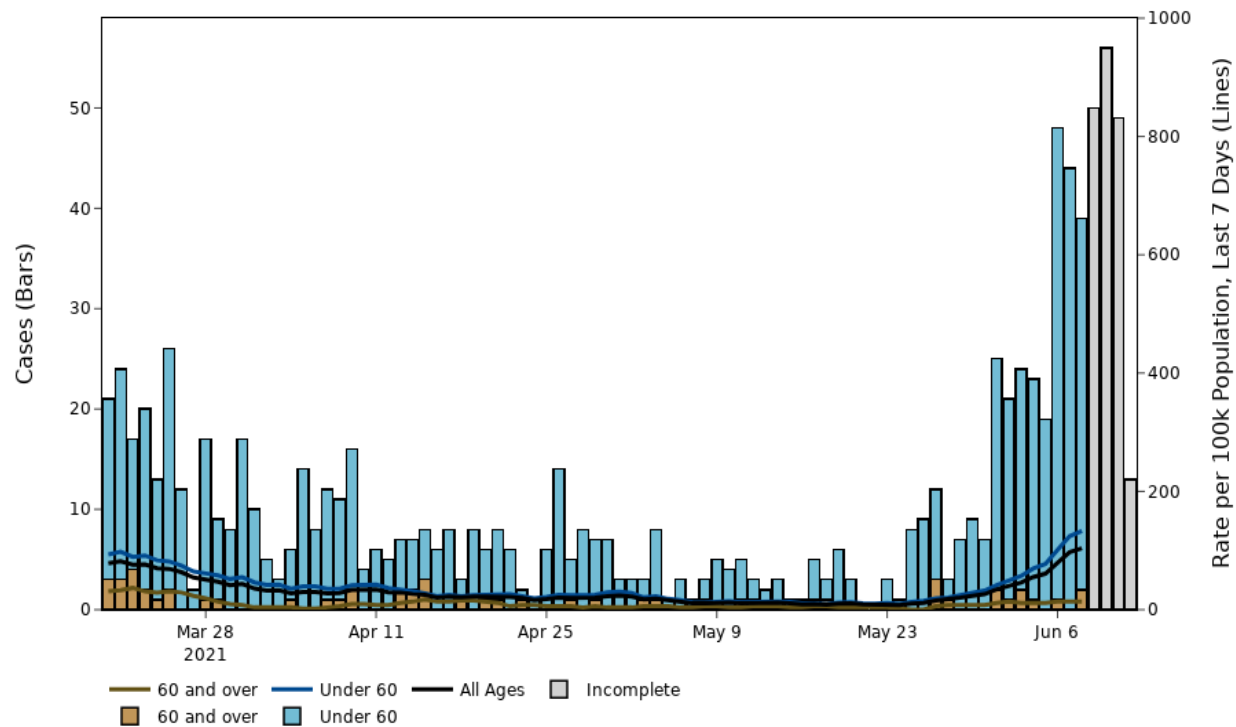


Data Source – coronavirus.data.gov.uk

The red dashed line denotes the 4 most recent days data which are provisional

# Warrington

Warrington



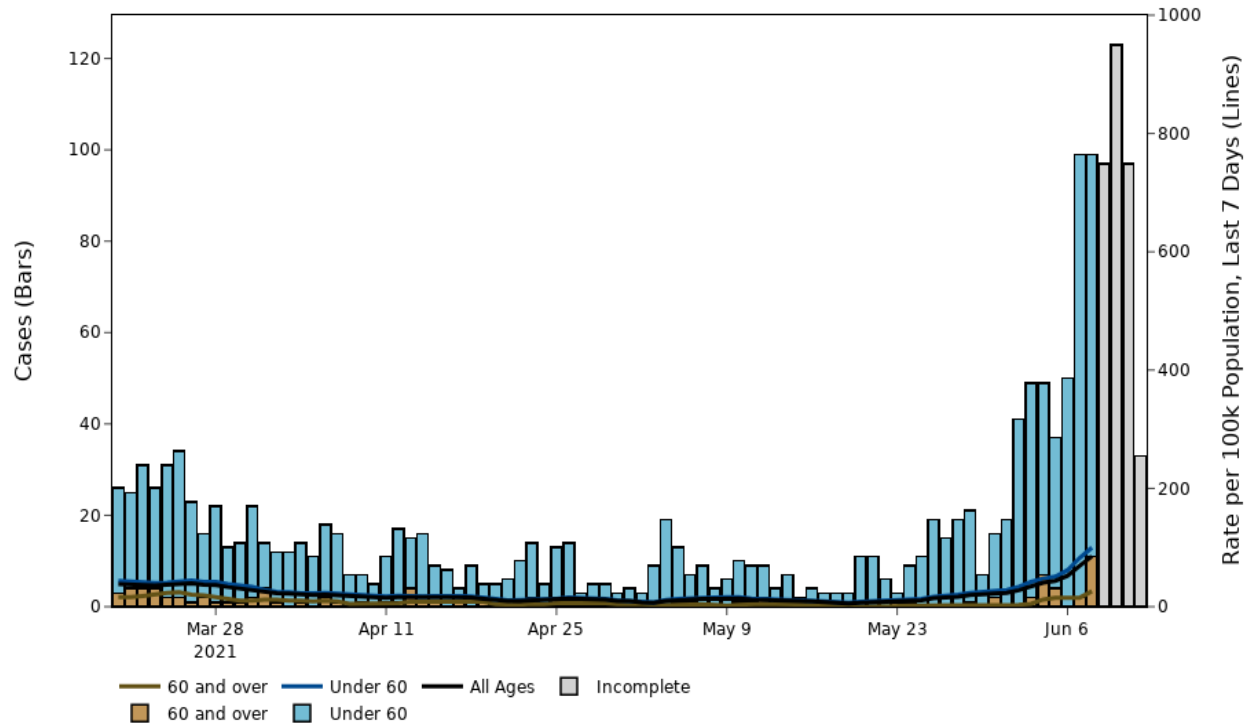
Data Source – coronavirus.data.gov.uk

The red dashed line denotes the 4 most recent days data which are provisional

OFFICIAL

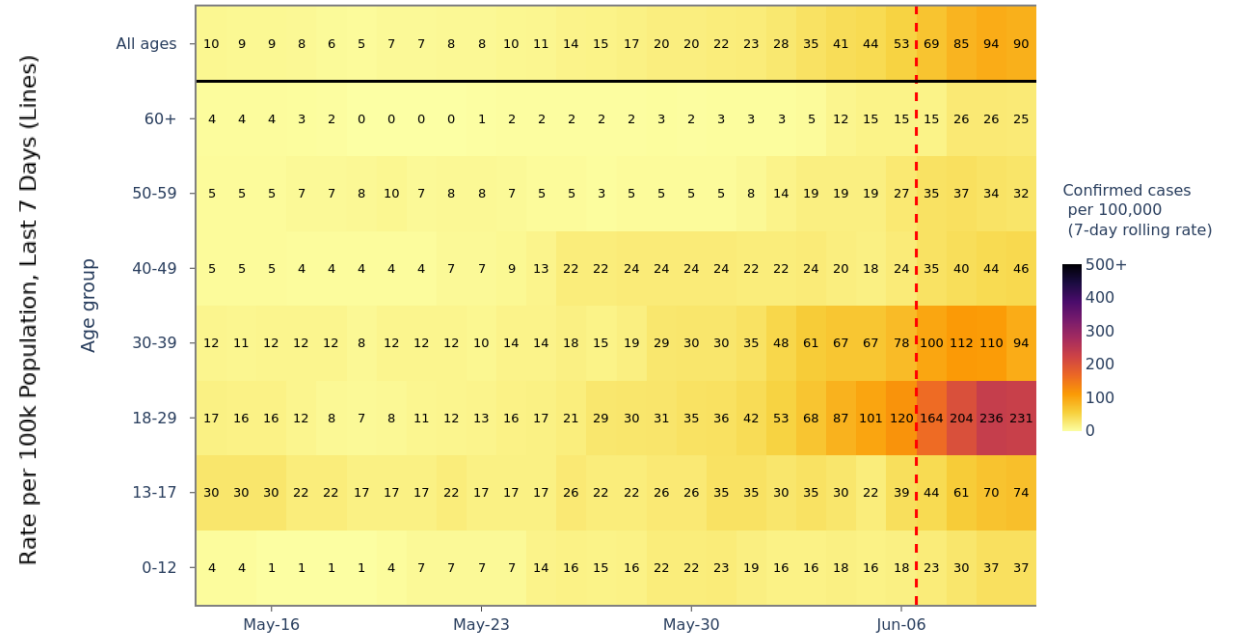
# Liverpool

Liverpool



Data Source – coronavirus.data.gov.uk

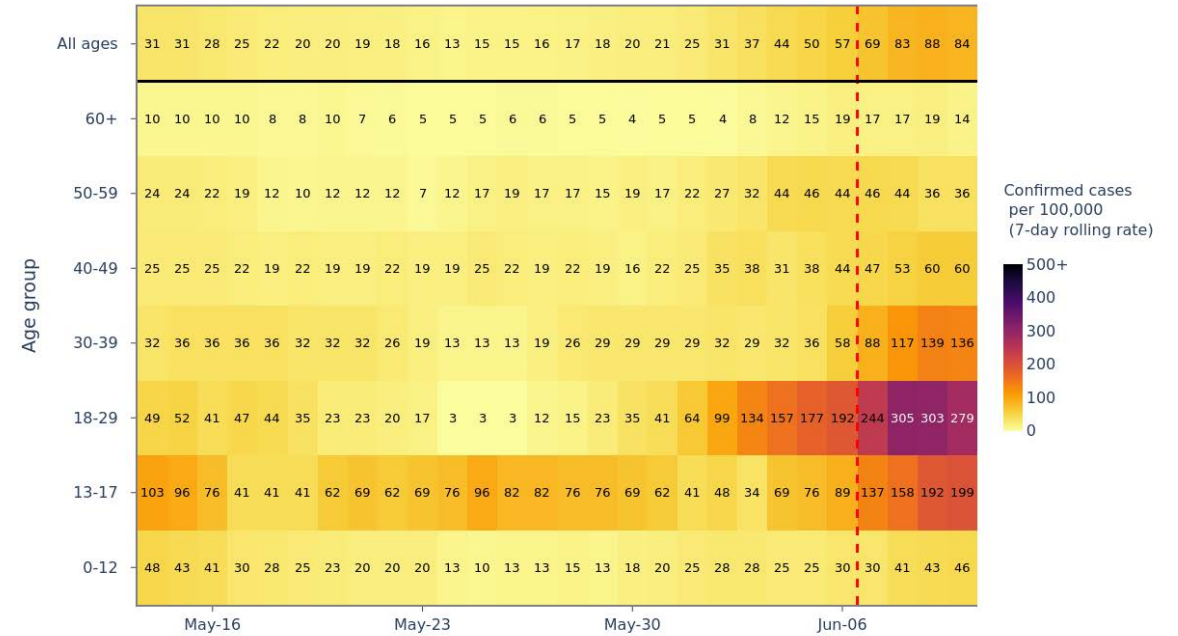
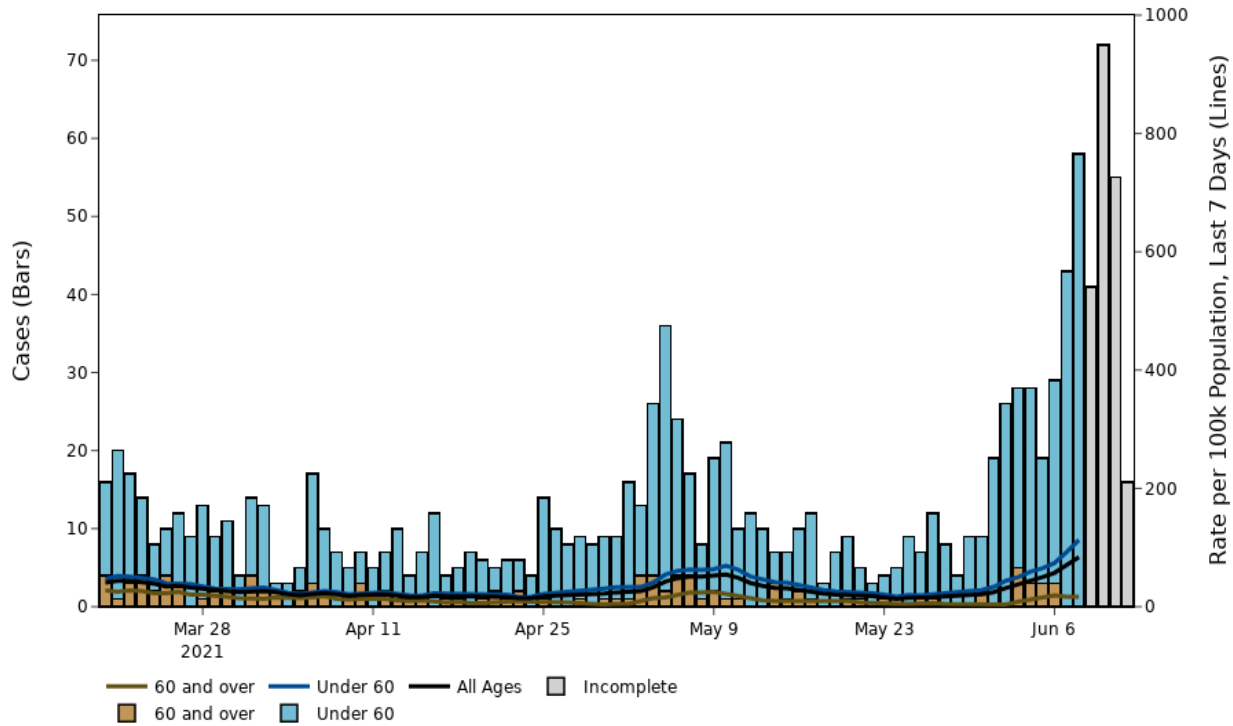
OFFICIAL



The red dashed line denotes the 4 most recent days data which are provisional

# Sefton

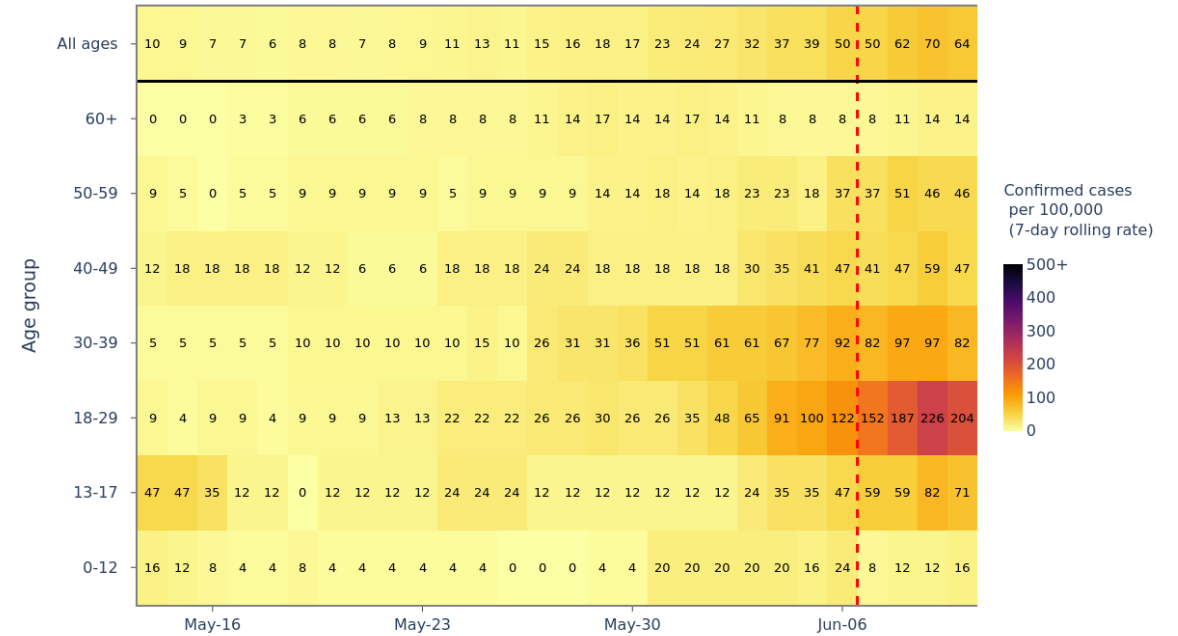
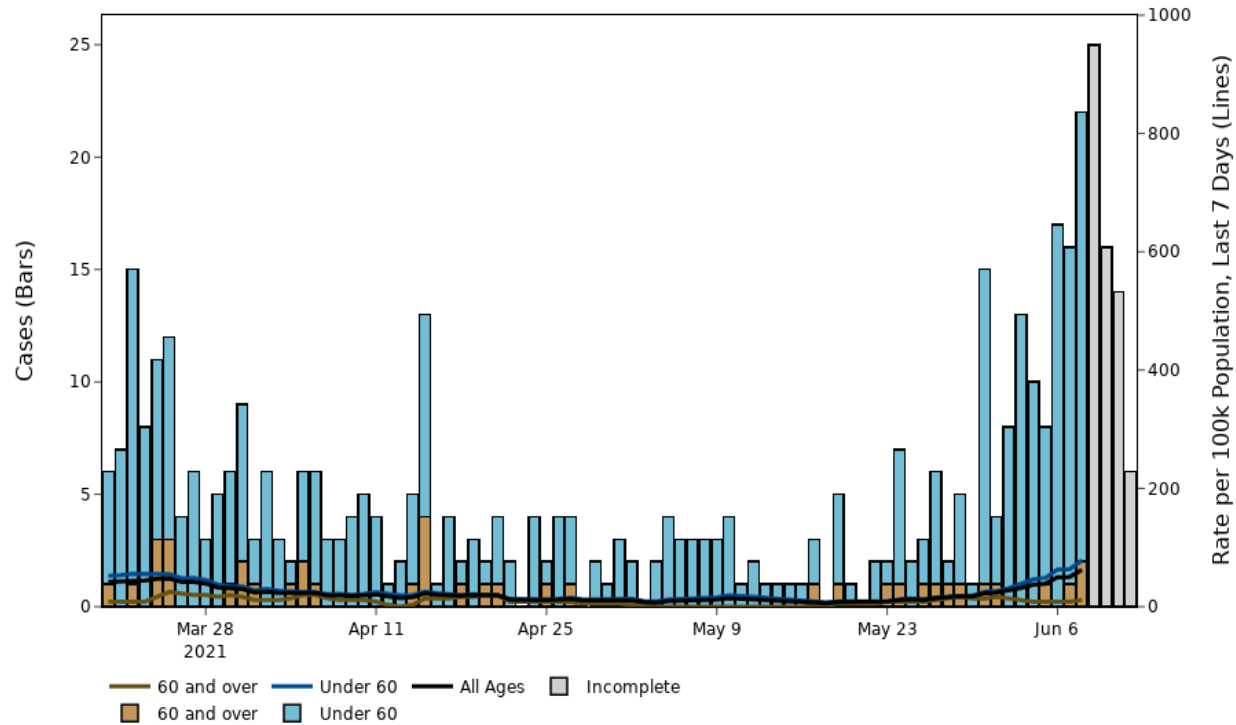
## Sefton



Data Source – coronavirus.data.gov.uk

The red dashed line denotes the 4 most recent days data which are provisional

## Knowsley

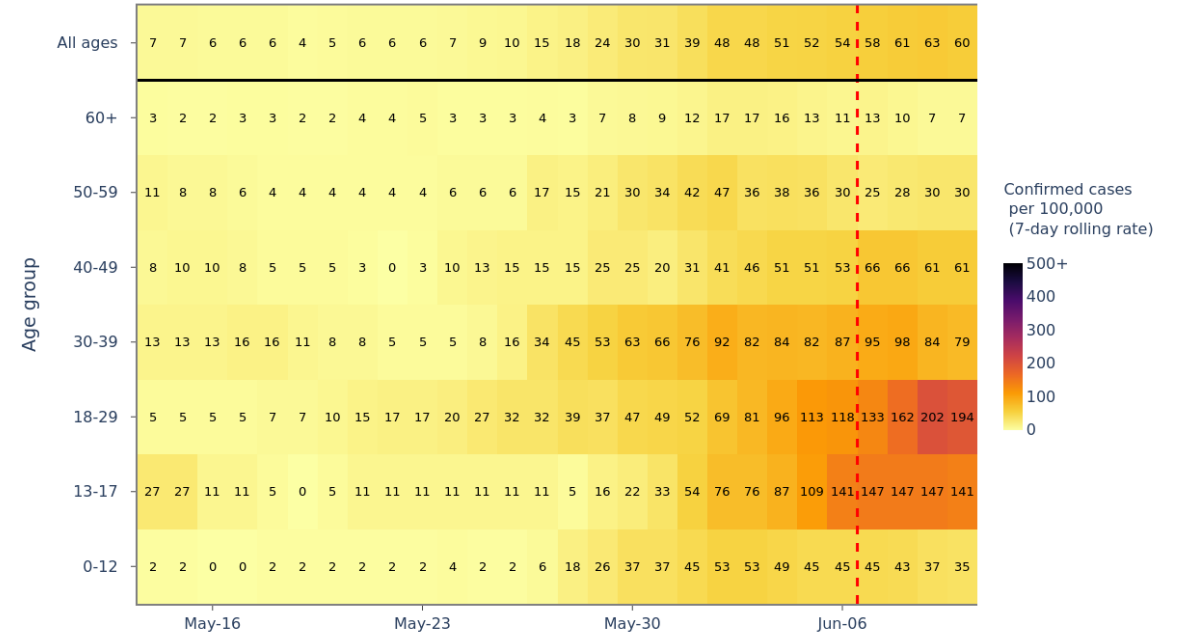
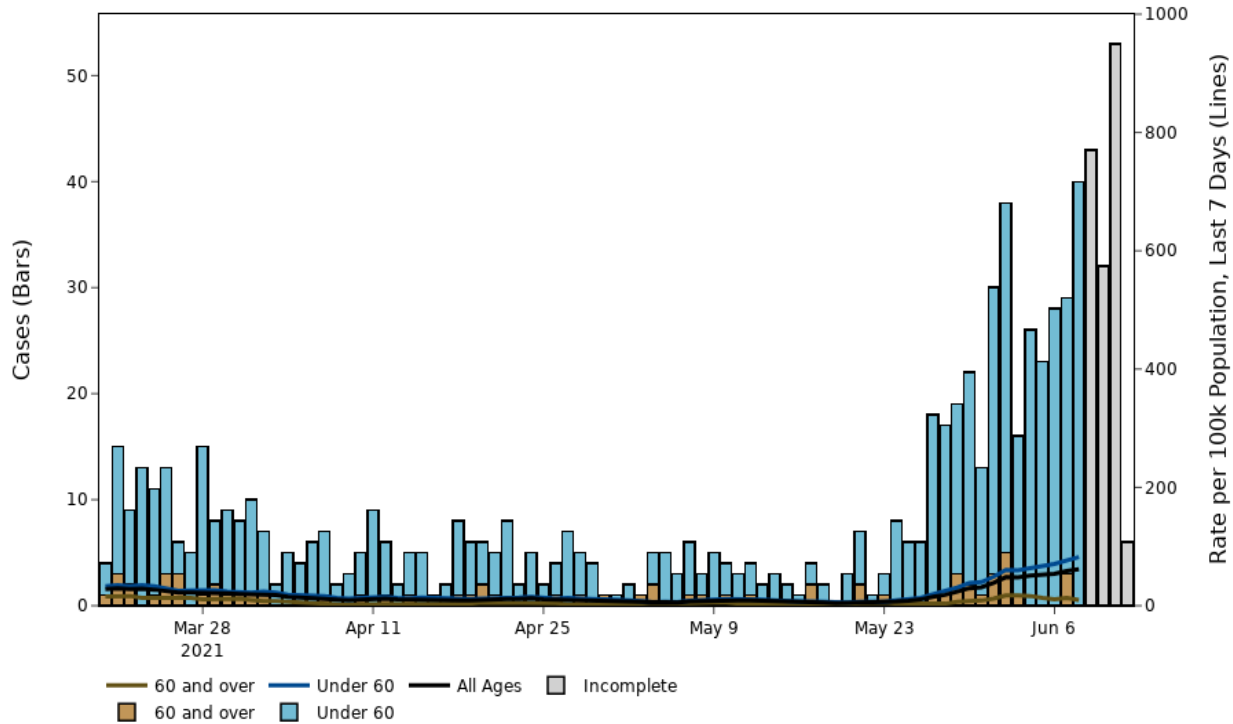


Data Source – coronavirus.data.gov.uk

The red dashed line denotes the 4 most recent days data which are provisional

# Wirral

Wirral



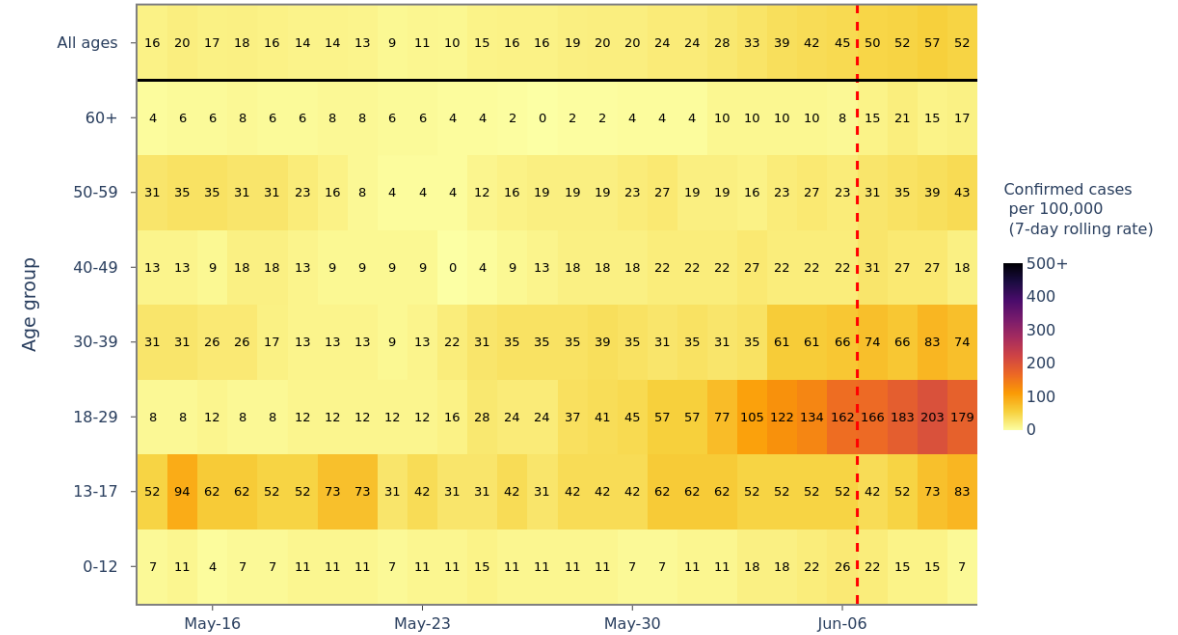
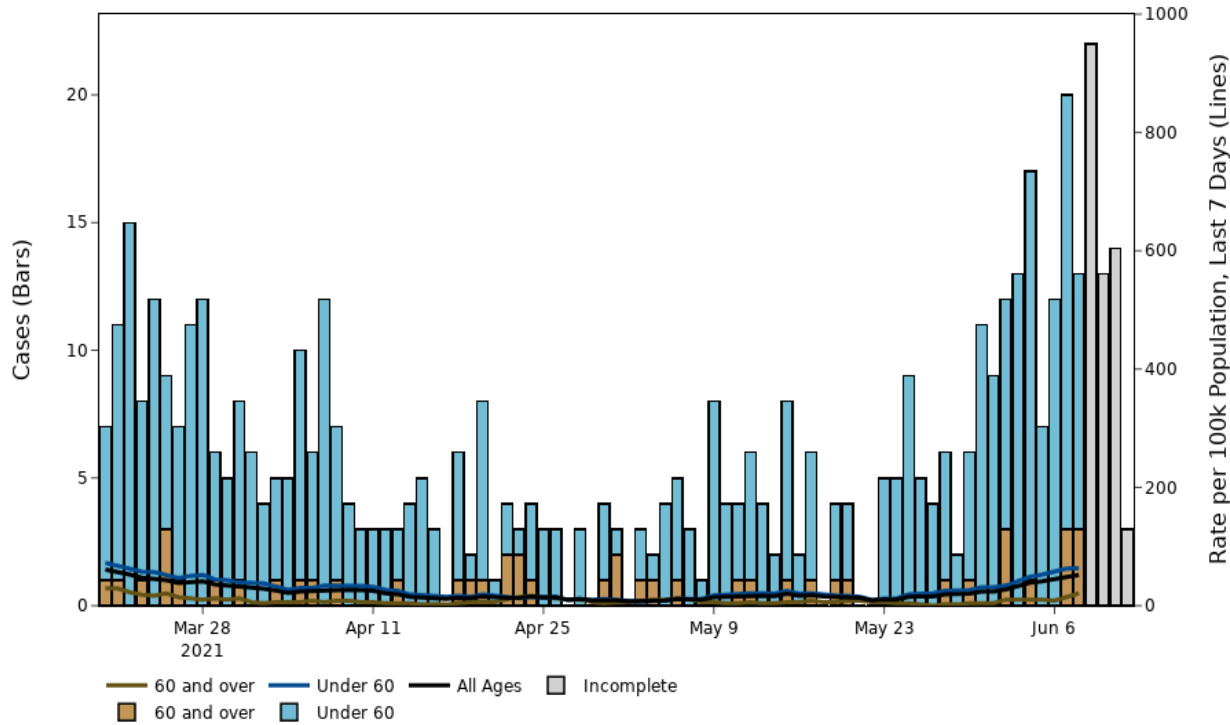
Data Source – coronavirus.data.gov.uk

The red dashed line denotes the 4 most recent days data which are provisional

OFFICIAL

# St. Helens

St. Helens



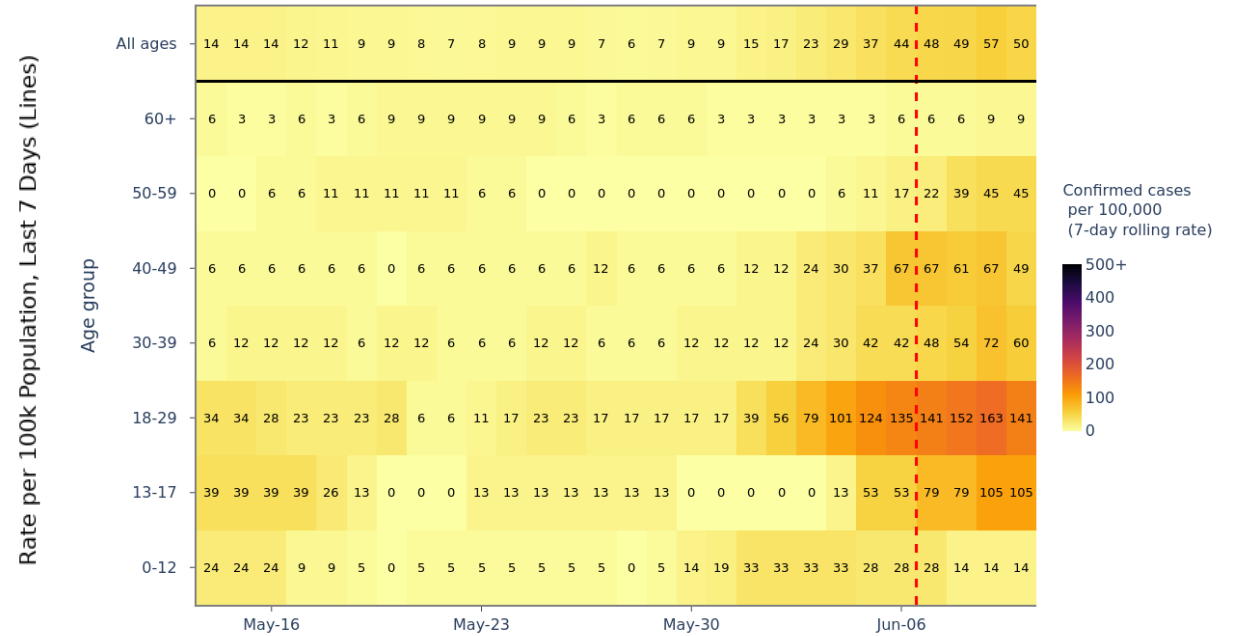
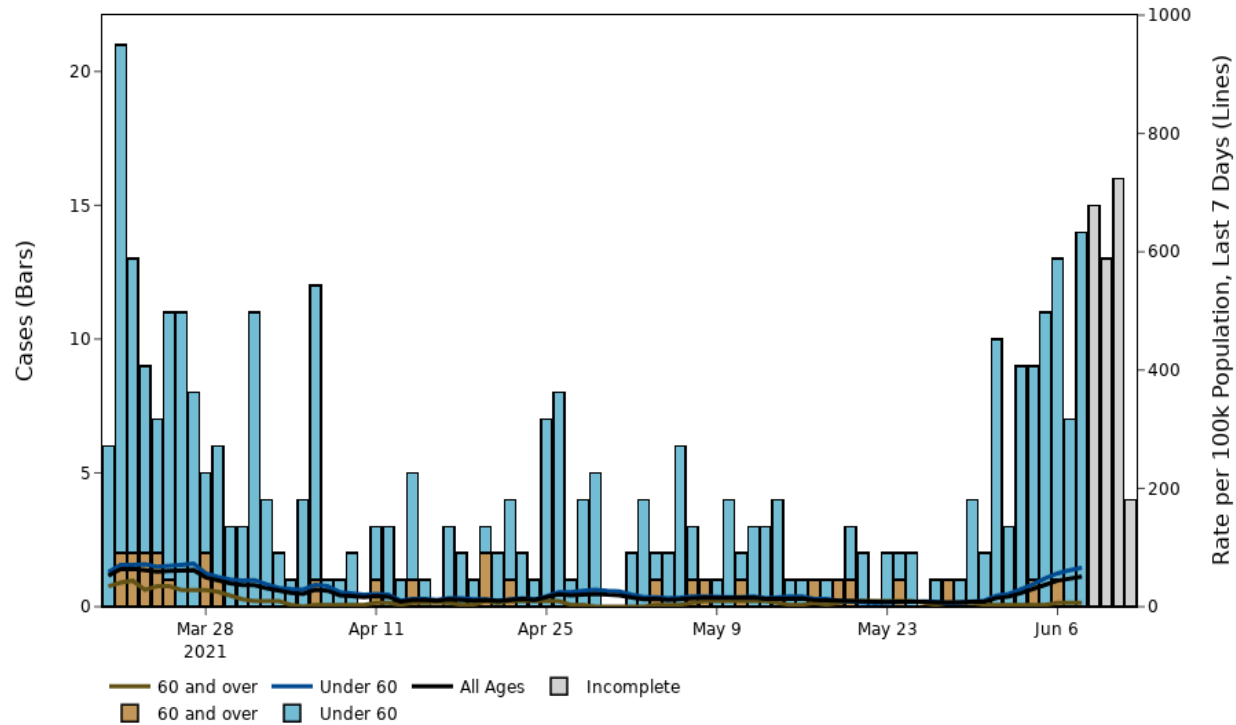
Data Source – coronavirus.data.gov.uk

The red dashed line denotes the 4 most recent days data which are provisional



# Halton

## Halton



Data Source – coronavirus.data.gov.uk

The red dashed line denotes the 4 most recent days data which are provisional

# Areas

## Areas where the delta variant is spreading and are in receipt of an enhanced response (1/2)

	Individuals tested per day per 100,000 population		Percentage individuals test positive		Case rate per 100,000 population		Case rate per 100,000 population aged 60 years and over		Case rate per 100,000 population aged 11 - 16 years olds		Case rate per 100,000 population aged 17 - 21 years olds		Confirmed cases (last 7-days)
	7-day moving average	7-day change. %	7-day moving average	7-day change. %	7-day moving average	7-day change. %	7-day moving average	7-day change. %	7-day moving average	7-day change. %	7-day moving average	7-day change. %	
Blackburn with Darwen	678	Increase	13.9%	Increase	649	Increase	167	Increase	1219	Increase	1191	Increase	971
Ribble Valley	523	Increase	11.7%	Increase	430	Increase	70	Increase	464	Increase	2223	Increase	262
Hyndburn	542	Increase	10.4%	Increase	396	Increase	46	Increase	579	Increase	1025	Increase	321
Rossendale	727	Increase	7.6%	Decrease	374	Increase	51	Decrease	665	Decrease	1402	Increase	267
Burnley	616	Increase	8.5%	Increase	370	Increase	69	Increase	409	Increase	2104	Increase	329
South Ribble	475	Increase	10.2%	Increase	331	Increase	82	Increase	331	Increase	1703	Increase	367
Bolton	511	Decrease	8.8%	Decrease	311	Decrease	60	No change	596	Decrease	632	Decrease	895
Salford	442	Increase	9.9%	Increase	310	Increase	43	Increase	343	Increase	526	Increase	803
Pendle	456	Increase	8.9%	Increase	289	Increase	58	Increase	286	Increase	1262	Increase	266
Manchester	457	Increase	9.0%	Increase	286	Increase	52	Increase	409	Increase	447	Increase	1581
Preston	528	Increase	6.3%	Increase	244	Increase	28	Increase	353	Increase	834	Increase	349
Bury	410	Increase	8.5%	Increase	241	Increase	44	Increase	323	Decrease	908	Increase	461
Stockport	395	Increase	8.4%	Increase	232	Increase	40	Increase	510	Increase	681	Increase	680
Chorley	535	Increase	6.1%	Increase	227	Increase	23	Increase	381	Increase	734	Increase	268
Wigan	394	Increase	7.8%	Increase	213	Increase	47	Increase	187	Increase	712	Increase	701
Rochdale	368	Increase	7.1%	Increase	192	Increase	45	Increase	324	Increase	576	Increase	428
Trafford	408	Increase	6.8%	Increase	189	Increase	46	Increase	230	Increase	942	Increase	449
Bedford	832	Increase	3.1%	Decrease	164	Increase	22	Decrease	371	Increase	387	Increase	284
Blackpool	607	Increase	3.5%	Increase	160	Increase	11	Increase	171	Increase	817	Increase	223
Oldham	335	Increase	6.8%	Increase	152	Increase	22	Increase	242	Increase	347	Increase	360

Data for specimens taken between 02 June 2021 to 8 June 2021 (7 day).

## Areas where the delta variant is spreading and are in receipt of an enhanced response (2/2)

	Individuals tested per day per 100,000 population		Percentage individuals test positive		Case rate per 100,000 population		Case rate per 100,000 population aged 60 years and over		Case rate per 100,000 population aged 11 - 16 years olds		Case rate per 100,000 population aged 17 - 21 years olds		Confirmed cases (last 7-days)
	7-day moving average	7-day change. %	7-day moving average	7-day change. %	7-day moving average	7-day change. %	7-day moving average	7-day change. %	7-day moving average	7-day change. %	7-day moving average	7-day change. %	
Tameside	357	Increase	5.7%	Increase	146	Increase	36	Increase	309	Increase	288	Increase	330
Cheshire East	472	Increase	3.9%	Increase	127	Increase	20	Increase	281	Increase	593	Increase	487
Leicester	393	Increase	4.5%	Increase	124	Increase	27	Increase	272	Increase	219	Increase	440
Kirklees	386	Decrease	4.6%	Increase	121	Increase	30	Increase	233	Decrease	279	Increase	534
Cheshire West and Chester	1016	Increase	1.6%	Decrease	115	Increase	14	No change	297	Increase	423	Increase	396
Fylde	566	Increase	2.8%	Increase	114	Increase	21	Increase	257	Decrease	360	Increase	92
Warrington	445	Increase	3.2%	Increase	104	Increase	14	Increase	109	Increase	667	Increase	218
North Tyneside	464	Decrease	2.8%	Increase	90	Increase	16	Decrease	87	Decrease	298	Increase	188
Liverpool	303	Increase	3.5%	Increase	85	Increase	26	Increase	42	Increase	193	Increase	424
Sefton	381	Increase	2.9%	Increase	84	Increase	17	Increase	123	Increase	368	Increase	231
Birmingham	352	Increase	3.3%	Increase	81	Increase	23	Increase	144	Increase	137	Increase	928
Wyre	483	Increase	2.2%	Increase	77	Increase	13	Increase	125	Increase	426	Increase	86
Lancaster	402	Increase	2.5%	Increase	75	Increase	16	Increase	78	Increase	304	Increase	110
West Lancashire	396	Increase	2.3%	Increase	66	Increase	9	Increase	78	Increase	178	Increase	75
Knowsley	326	Increase	2.3%	Increase	62	Increase	11	Decrease	48	Increase	171	Increase	94
Wirral	373	Increase	2.2%	Increase	62	Increase	10	Decrease	132	Increase	191	Increase	200
Hounslow	690	Decrease	1.1%	Increase	57	Increase	9	Decrease	100	Increase	111	Increase	154
St. Helens	372	Increase	2.1%	Increase	52	Increase	21	Increase	25	Decrease	204	Increase	94
Halton	357	Increase	1.7%	Increase	51	Increase	6	Increase	42	Increase	210	Increase	66

Data for specimens taken between 02 June 2021 to 8 June 2021 (7 day).