



Public Health  
England



**Test and Trace**

# Briefing England

Week commencing 7 June 2021

# High level summary – Regions case rates in 7 days

## 26 May 2021 to 01 June 2021

	Individuals tested per day per 100,000 population		Percentage individuals test positive		Case rate per 100,000 population		Case rate per 100,000 population aged 60 years and over		Case rate per 100,000 population aged 11-16 year olds		Case rate per 100,000 population aged 17-21 year olds		Confirmed cases in previous 7 days	Specimens tested in TaqPath labs, %	Specimens with SGTF tested in TAQPath labs
	7-day moving average	7-day change. %	7-day moving average	7-day change. %	7-day moving average	7-day change. %	7-day moving average	7-day change. %	7-day moving average	7-day change. %	7-day moving average	7-day change. %	Last 7 days	Last 7 days, %	Last 7 days, %
East Midlands	326	Decrease	1.1%	Increase	26	Increase	6	Increase	76	Increase	55	Increase	1,267	52%	26%
East of England	371	Decrease	0.8%	Increase	22	Increase	7	Increase	47	Decrease	42	Increase	1,400	47%	15%
London	440	Increase	1.2%	Increase	37	Increase	10	Increase	64	Increase	67	Increase	3,268	21%	15%
North East	350	Decrease	1.0%	Increase	26	Increase	6	Increase	60	Increase	64	Increase	688	60%	38%
North West	371	Decrease	3.9%	Increase	102	Increase	18	Increase	207	Increase	241	Increase	7,463	48%	64%
South East	395	Increase	0.8%	Increase	26	Increase	6	Increase	64	Increase	50	Increase	2,274	26%	69%
South West	363	Decrease	0.4%	Increase	11	Increase	4	Increase	11	Decrease	31	Increase	621	10%	17%
West Midlands	338	Decrease	1.1%	Increase	27	Increase	7	Increase	60	Increase	55	Increase	1,572	54%	13%
Yorkshire and Humber	333	Decrease	1.8%	Increase	42	Increase	10	Increase	93	Decrease	96	Increase	2,312	53%	47%
<b>England</b>	<b>387</b>	Decrease	<b>1.3%</b>	Increase	<b>37</b>	Increase	<b>9</b>	Increase	<b>79</b>	Increase	<b>82</b>	Increase	<b>21,026</b>	<b>36%</b>	<b>16%</b>

### Narrative

- Weekly case rates in all ages group have increased across all regions.
- The North West has the highest case rates in all ages, 60+, 11-16, and 17-21 years. Rates in the North West increased across all age groups in the last week.
- The highest weekly case rates overall is among 17-21 year olds. This age group also has the highest 7 day change.

### Data Definitions

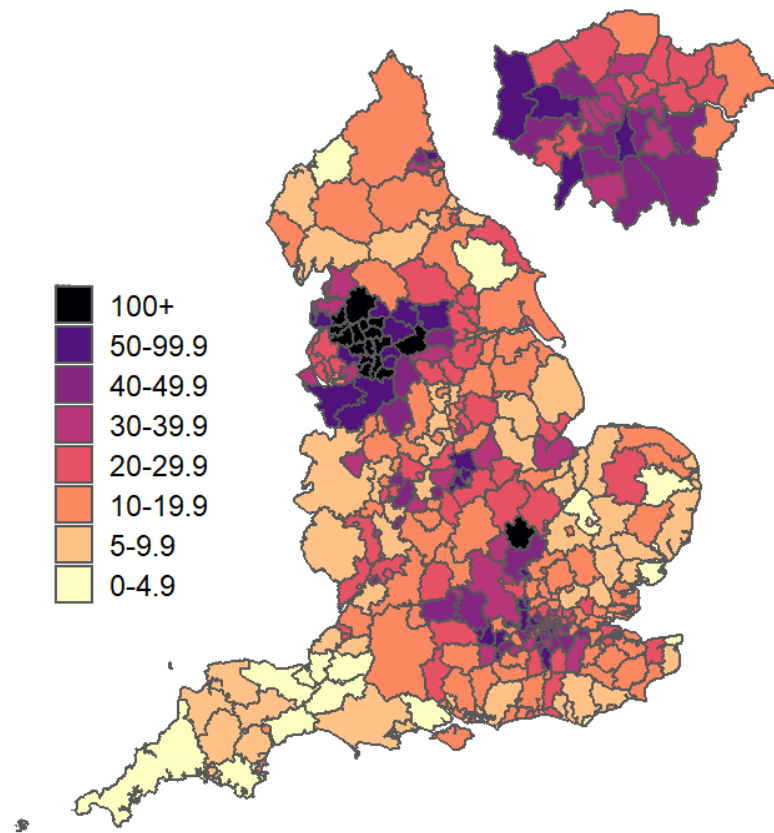
SGTF definition	S-gene target failure is a reliable marker of alpha variant
Individuals tested using PCR per day per 100,000 (7-DMA)	Number of individuals tested using PCR per 100,000 population
Percentage Individuals PCR test positive (7-DMA)	Percentage of individuals tested using PCR with specimen dates in the most recent 7-days period who were positive for SARS-CoV-2
Community outbreaks	Number of outbreaks reported to PHE during the 7 day period, excluding those reported from secondary healthcare and care home settings.

Data for specimens taken/outbreaks reported between 26 May 2021 to 01 June 2021 (7 day) and 19 May 2021 to 01 June 2021 (14 day).

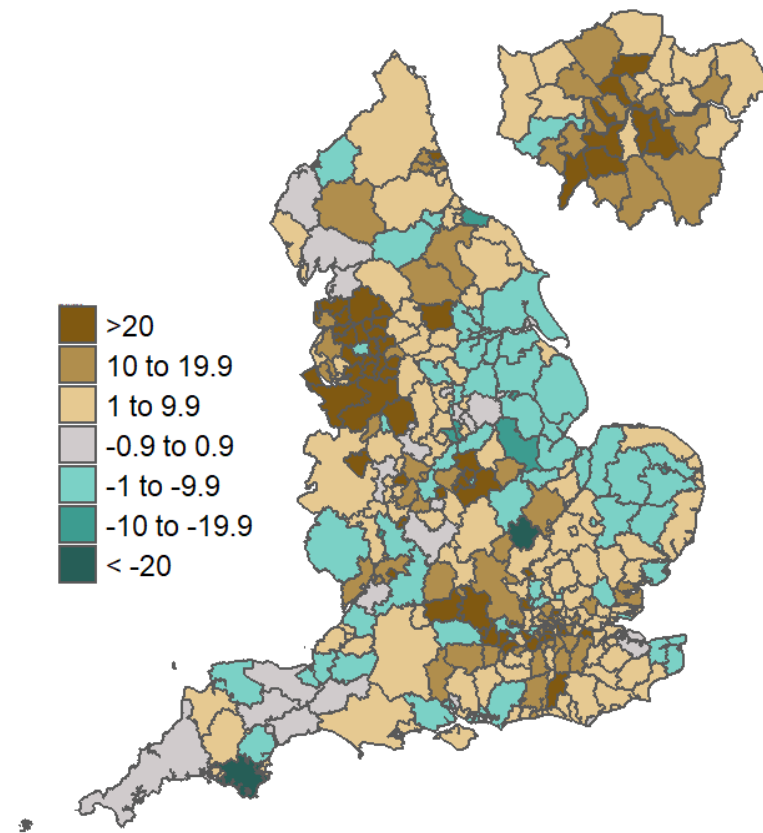
Data from Public Health England.

# Weekly case rate and rate of change per 100,000 population by Local Authority

Weekly case rates per 100,000 population  
by local authority  
26 May to 01 Jun 2021



Absolute case rate change per 100,000 population  
by local authority  
19 May to 25 May 2021 and 26 May to 01 Jun 2021



Data from SGSS; Pillar 1 and 2 testing. Contains National Statistics Data including 2019 population estimates. Crown copyright and database right 2021

# Greater Manchester

## Areas in case rate order:

Manchester

Bury

Salford

Stockport

Rochdale

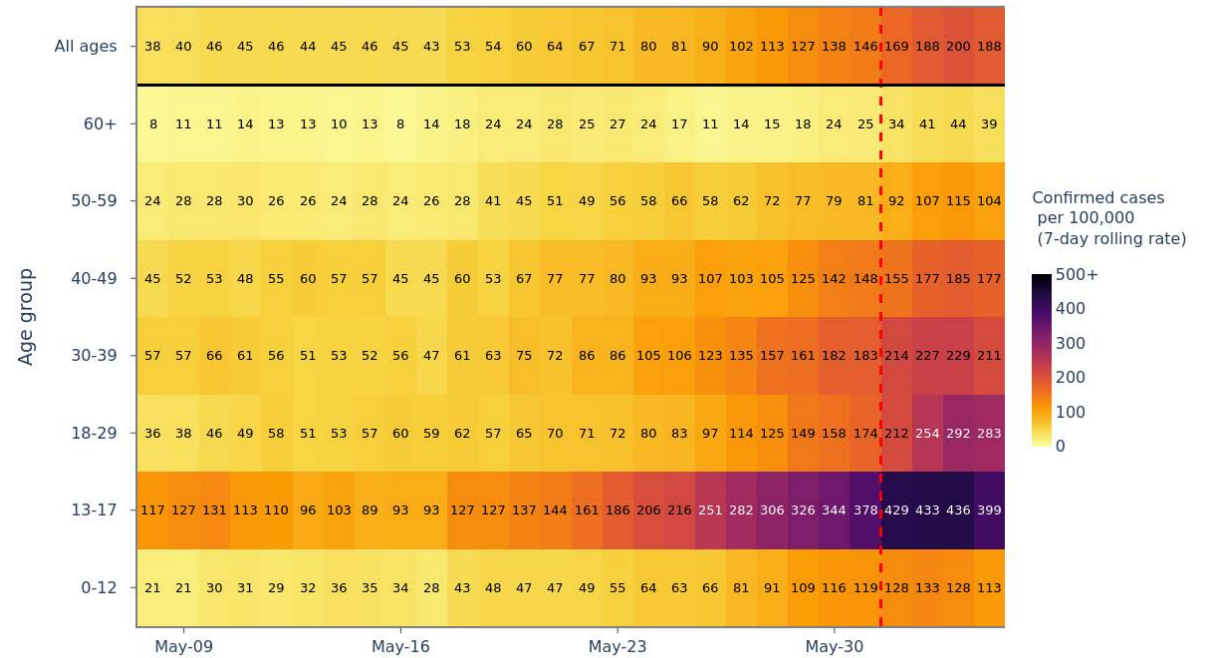
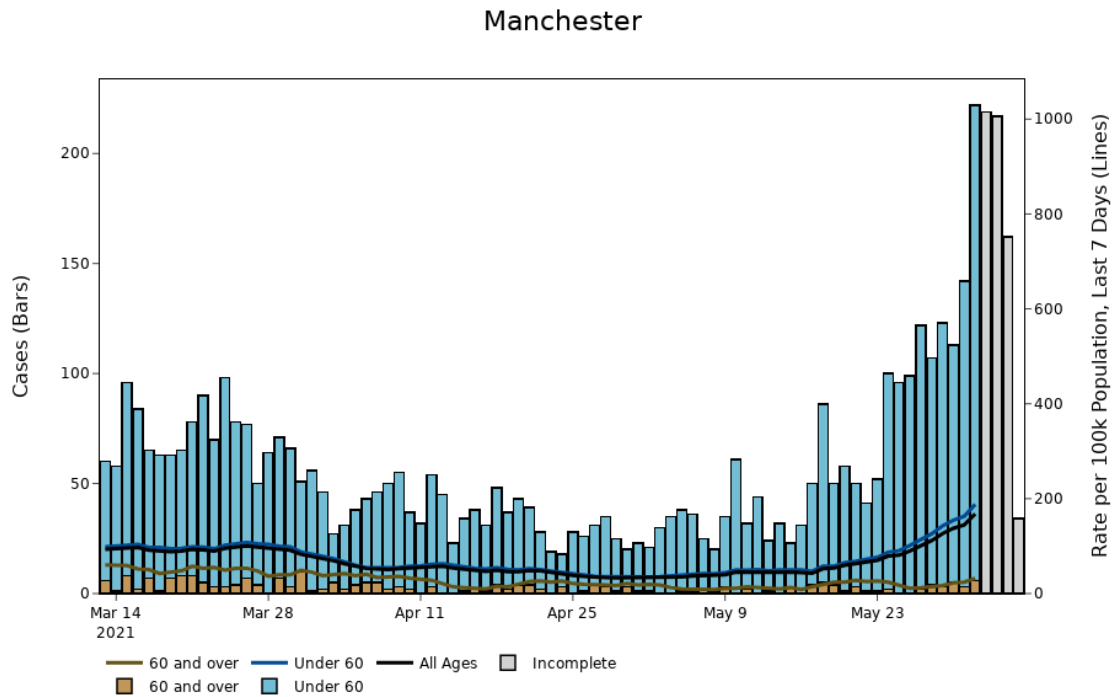
Trafford

Wigan

Oldham

Tameside

# Manchester



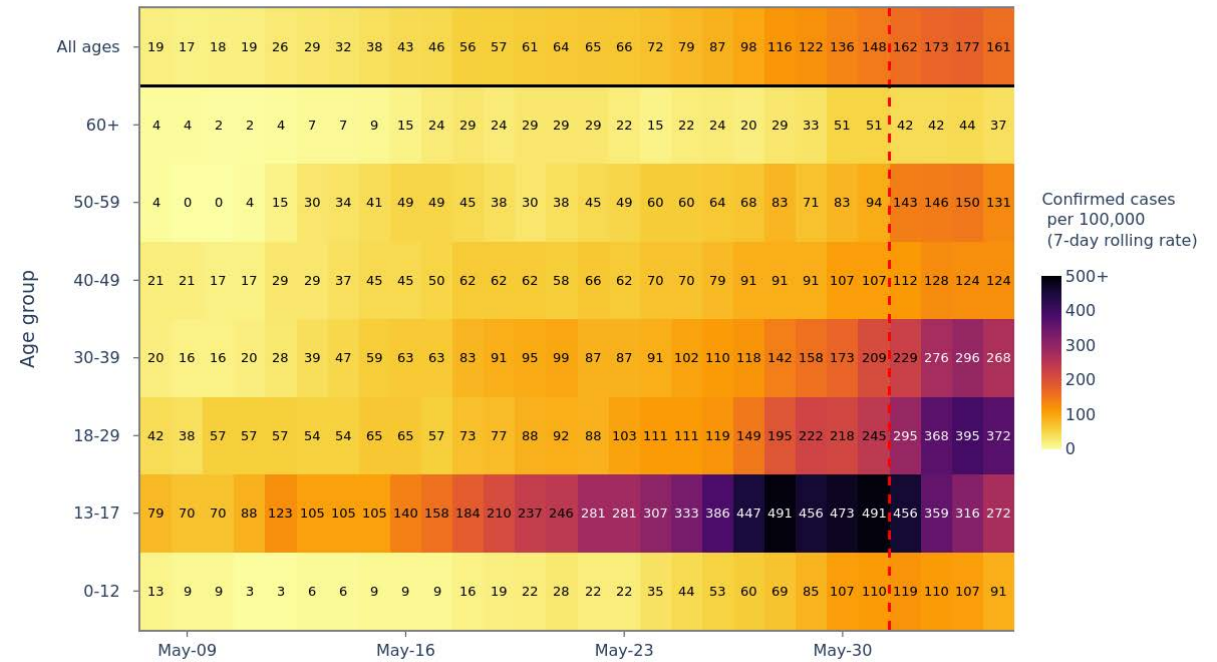
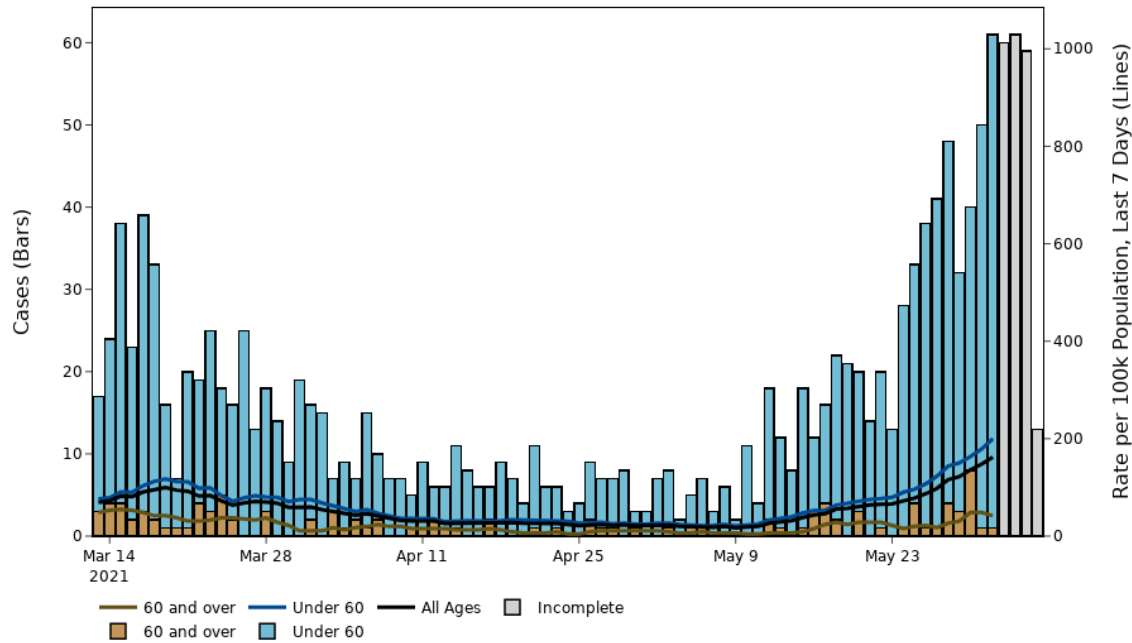
Data source - coronavirus.data.gov.uk

Produced by - Joint Biosecurity Centre

The red dashed line denotes the 4 most recent days data which are provisional

# Bury

Bury



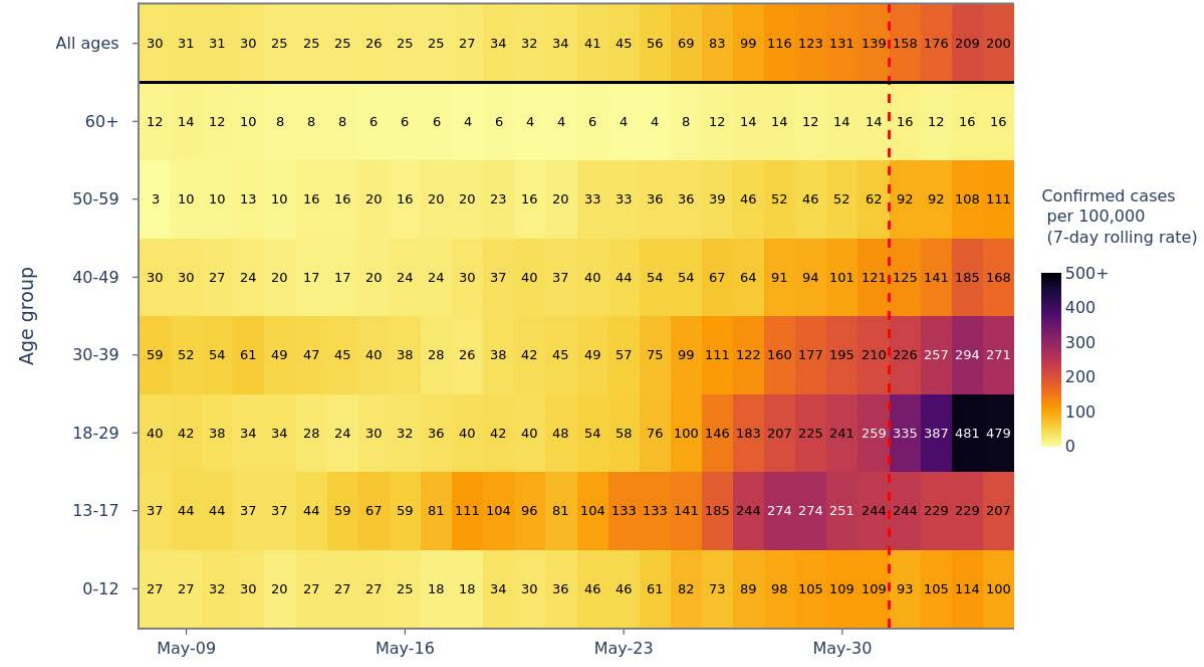
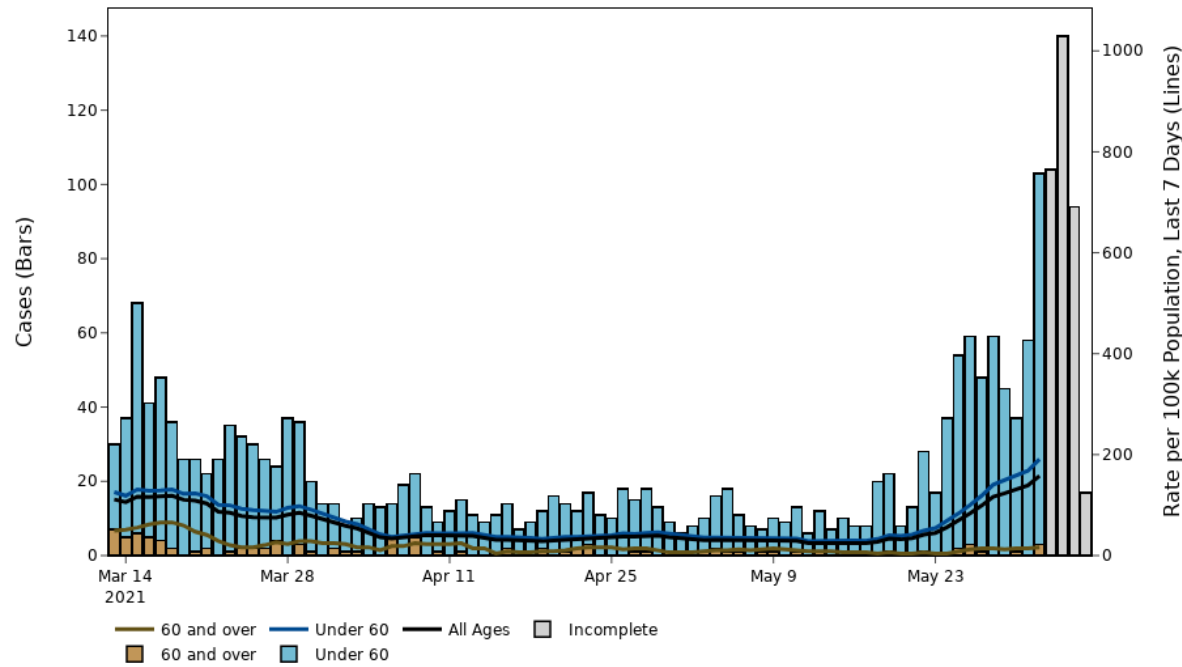
Data source - coronavirus.data.gov.uk

Produced by - Joint Biosecurity Centre

The red dashed line denotes the 4 most recent days data which are provisional

# Salford

Salford

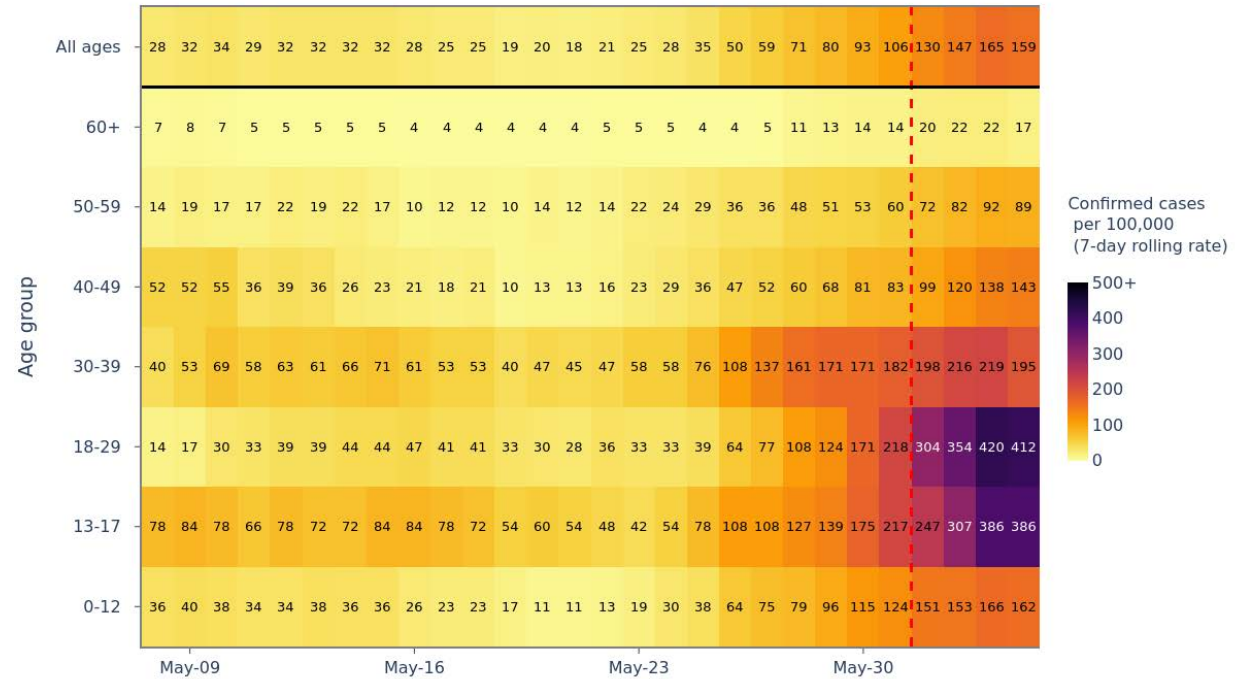
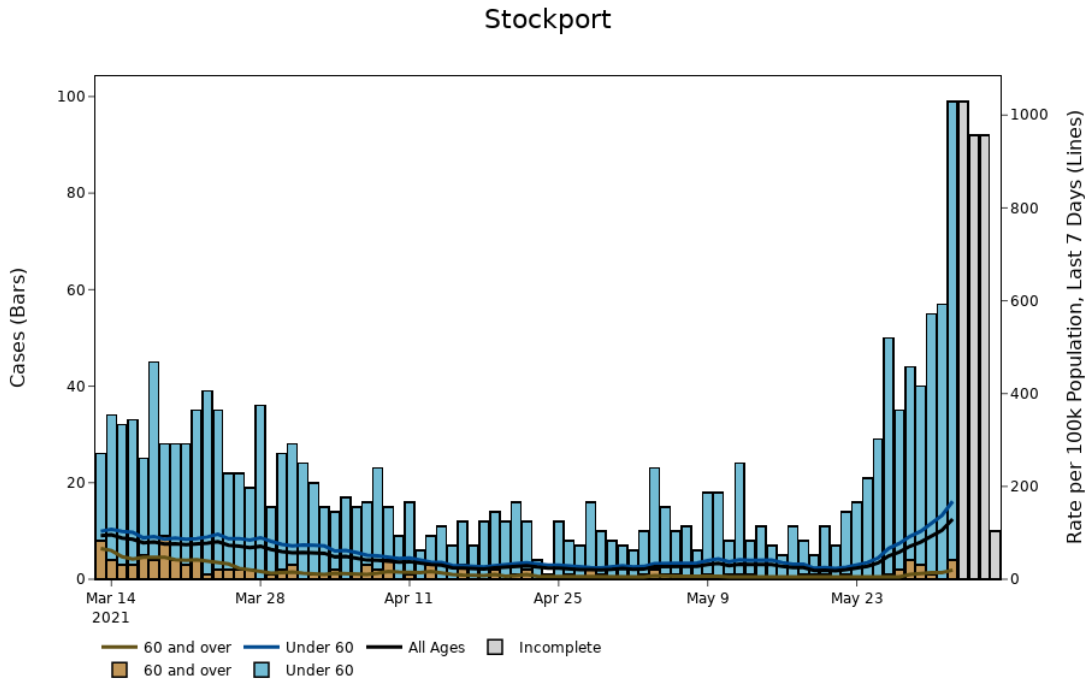


Data source - coronavirus.data.gov.uk

Produced by - Joint Biosecurity Centre

The red dashed line denotes the 4 most recent days data which are provisional

# Stockport



Data source - coronavirus.data.gov.uk

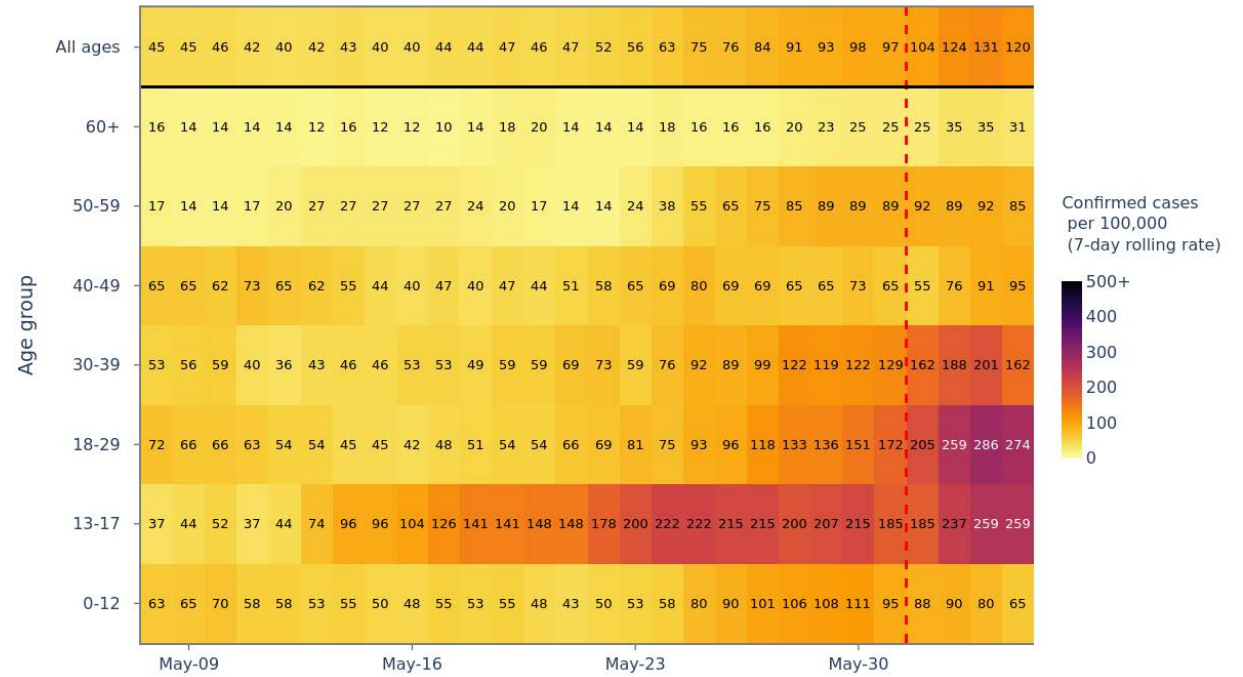
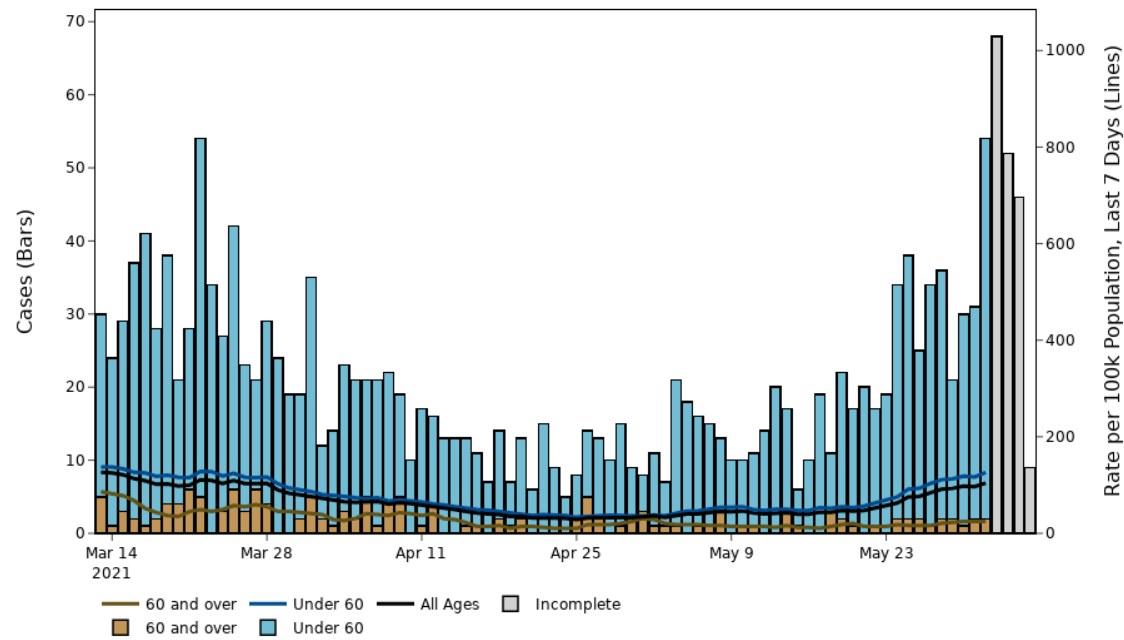
Produced by - Joint Biosecurity Centre

The red dashed line denotes the 4 most recent days data which are provisional



# Rochdale

Rochdale

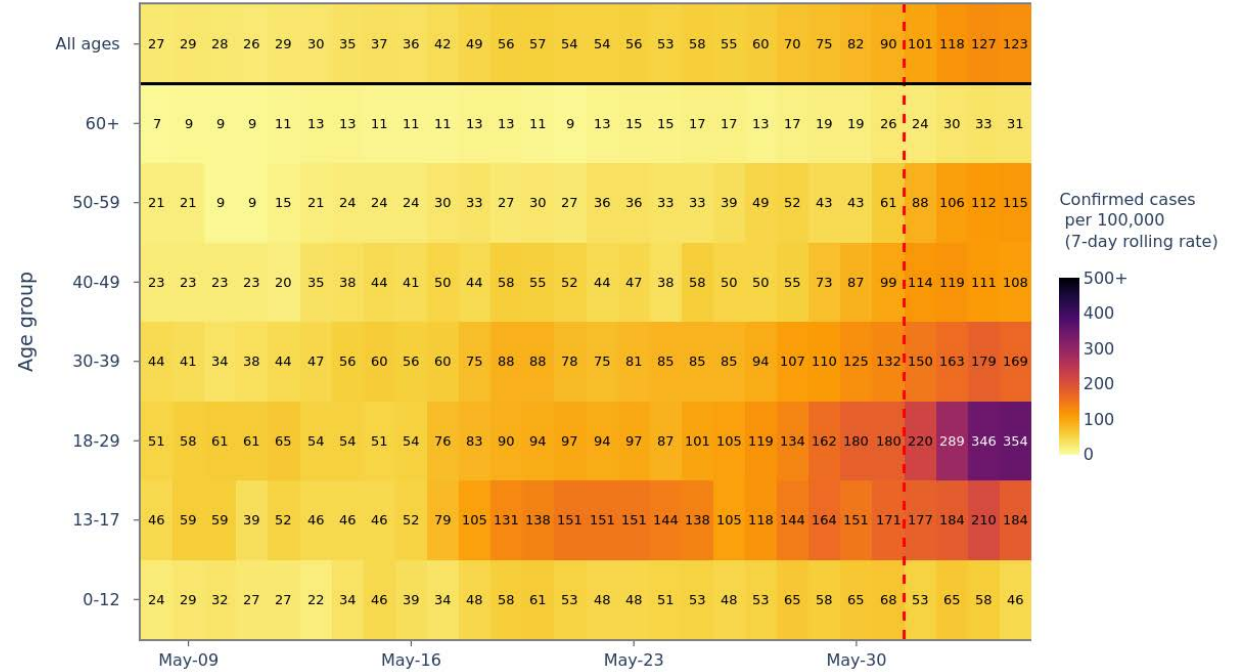
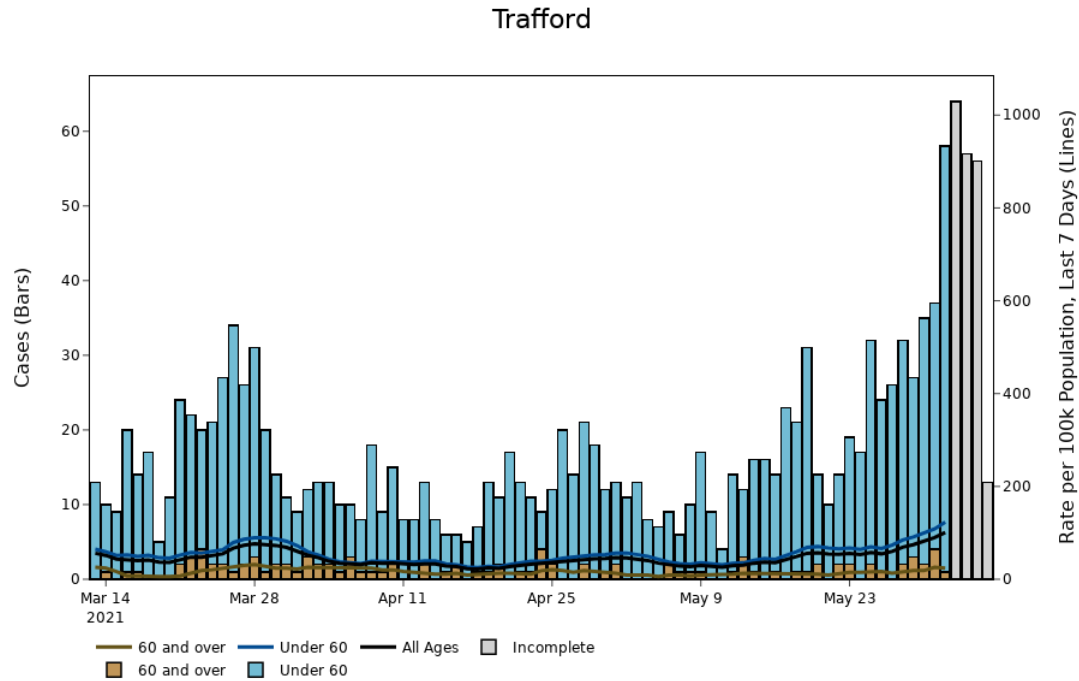


Data source - coronavirus.data.gov.uk

Produced by - Joint Biosecurity Centre

The red dashed line denotes the 4 most recent days data which are provisional

# Trafford

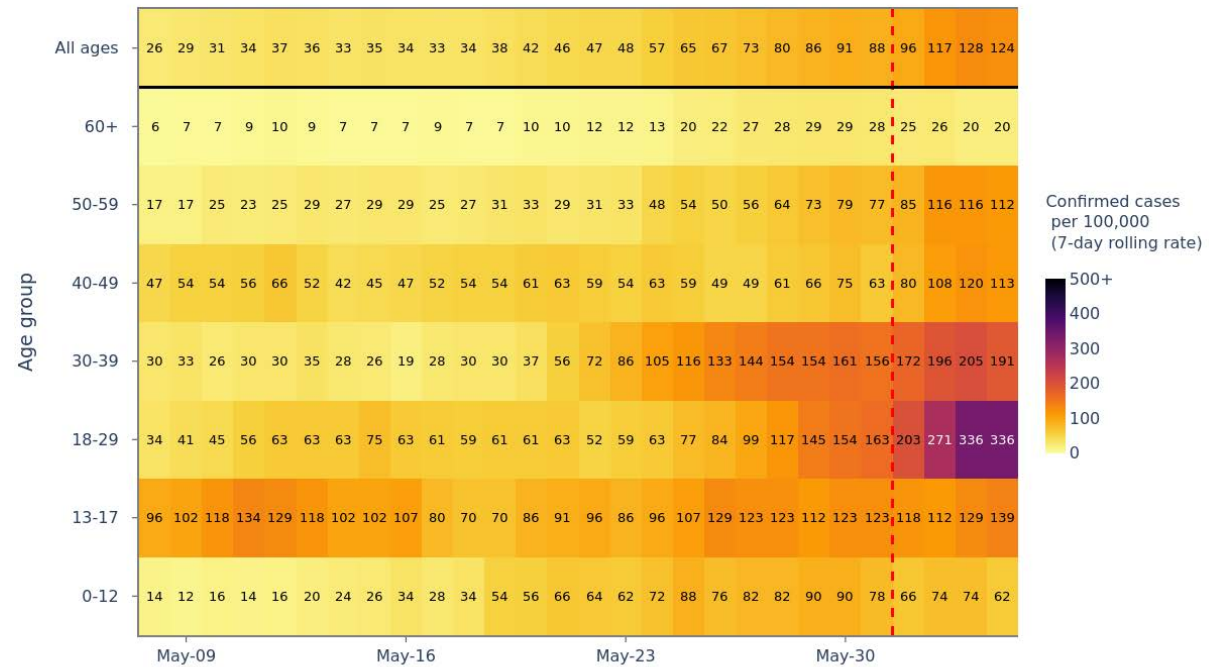
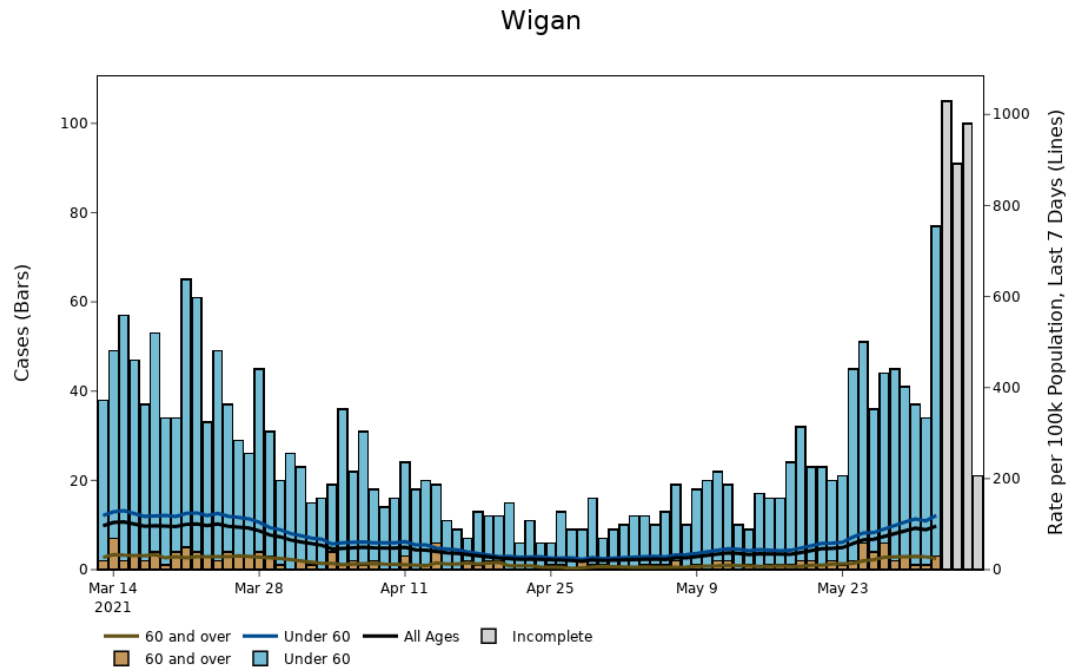


Data source - coronavirus.data.gov.uk

Produced by - Joint Biosecurity Centre

The red dashed line denotes the 4 most recent days data which are provisional

# Wigan

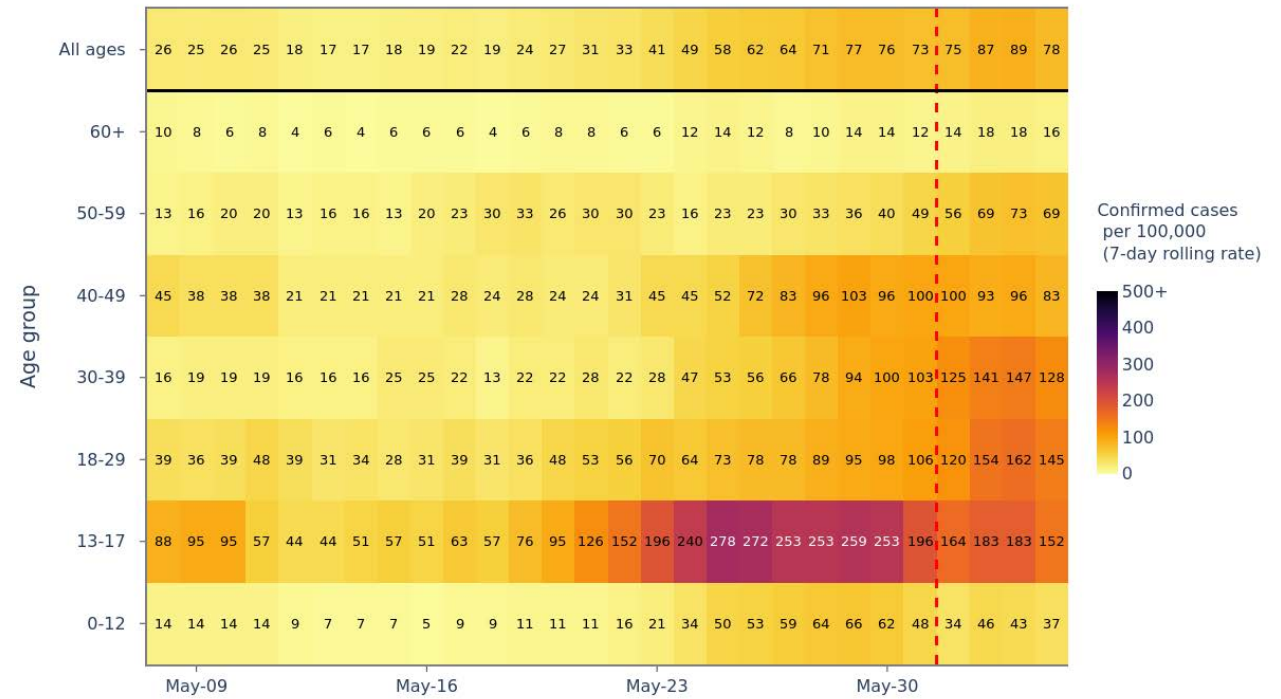
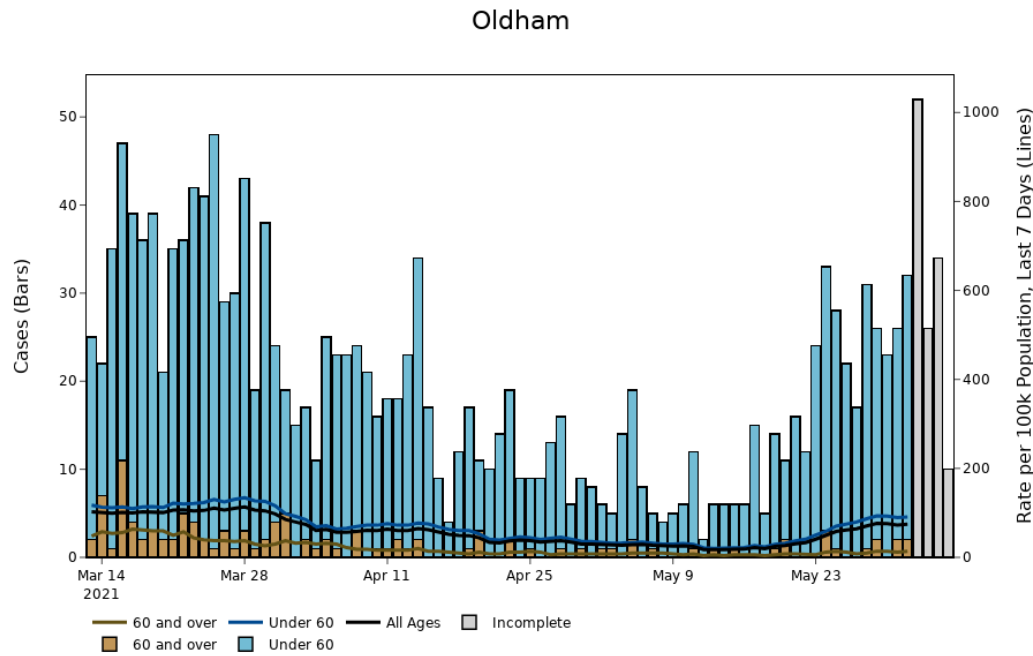


Data source - coronavirus.data.gov.uk

Produced by - Joint Biosecurity Centre

The red dashed line denotes the 4 most recent days data which are provisional

# Oldham

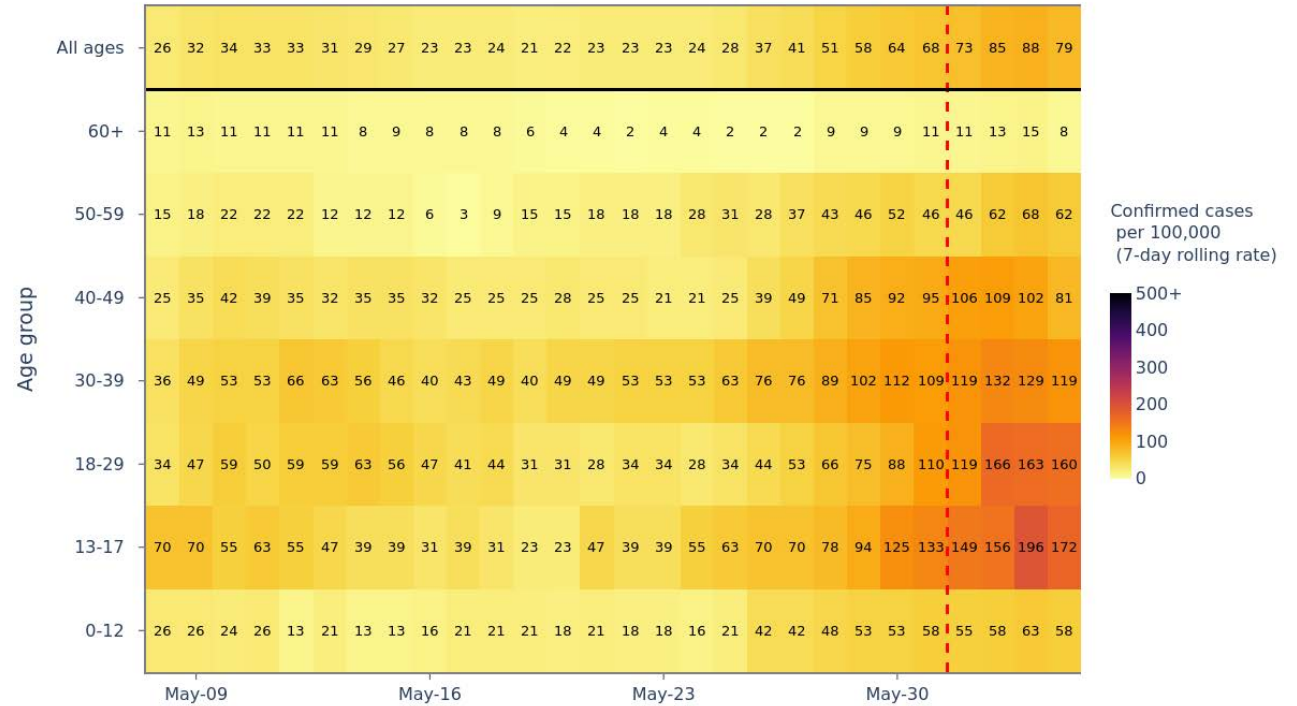
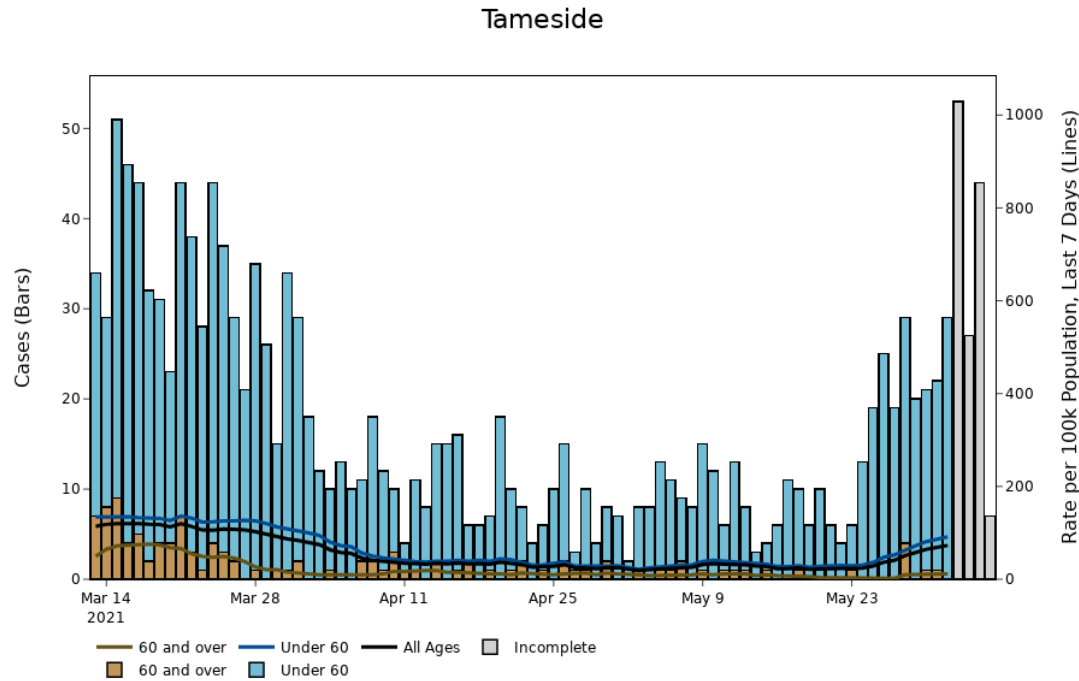


Data source - coronavirus.data.gov.uk

Produced by - Joint Biosecurity Centre

The red dashed line denotes the 4 most recent days data which are provisional

# Tameside



Data source - coronavirus.data.gov.uk

Produced by - Joint Biosecurity Centre

The red dashed line denotes the 4 most recent days data which are provisional

# Lancashire County Council

## Areas in case rate order:

Rossendale

Hyndburn

Ribble Valley

Preston

South Ribble

Chorley

Pendle

Fylde

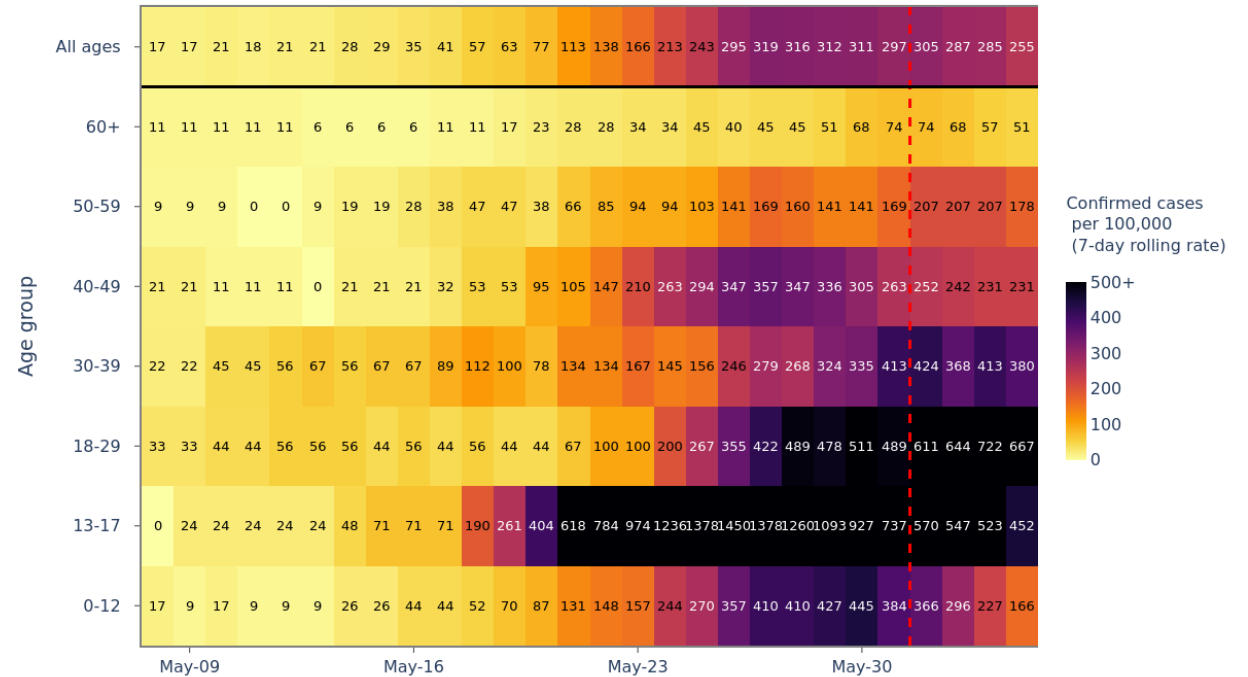
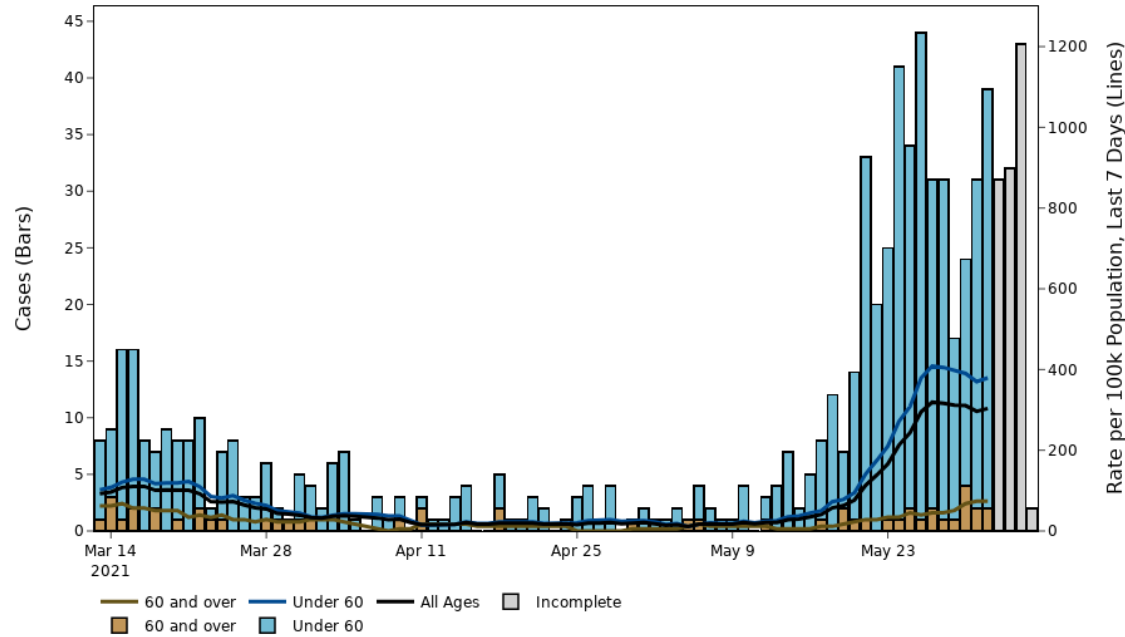
Wyre

Lancaster

West Lancashire

# Rossendale

Rossendale



Data source - coronavirus.data.gov.uk

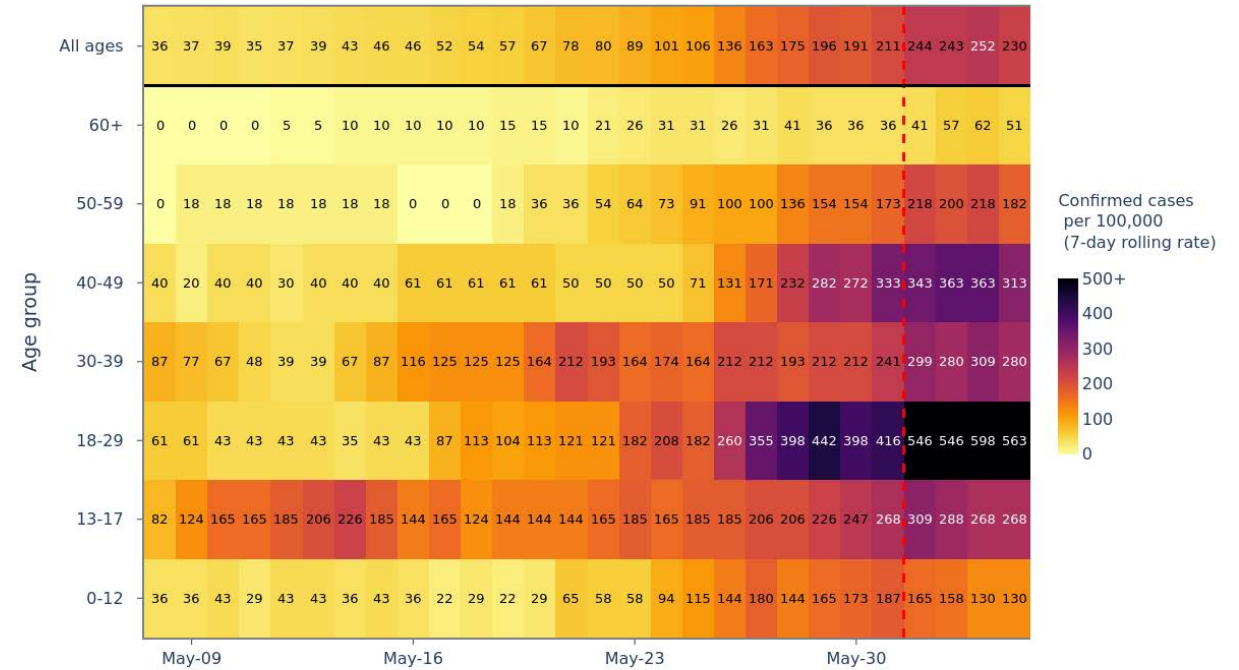
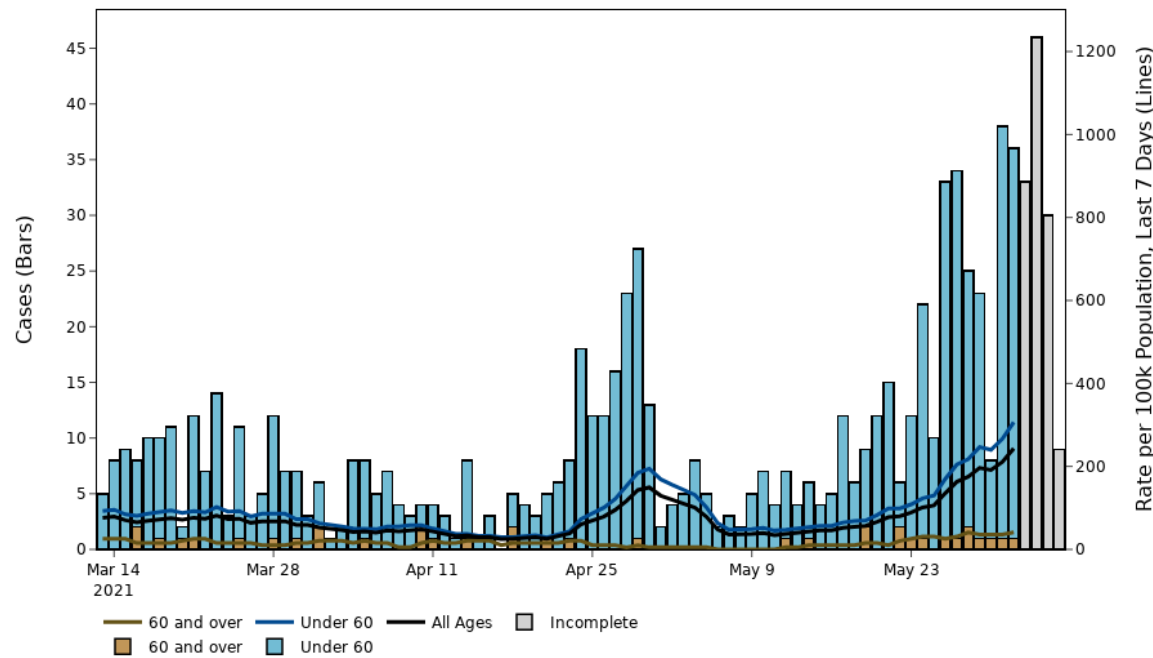
Produced by - Joint Biosecurity Centre

The red dashed line denotes the 4 most recent days data which are provisional



# Hyndburn

Hyndburn



Data source - coronavirus.data.gov.uk

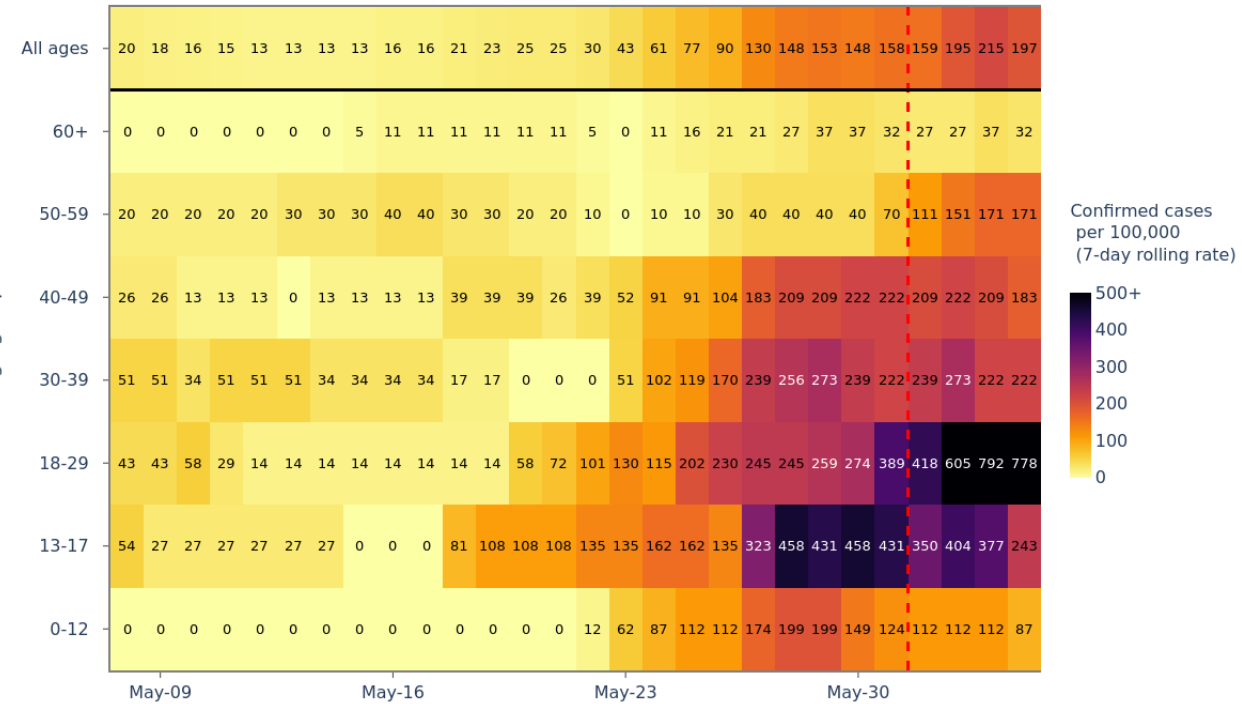
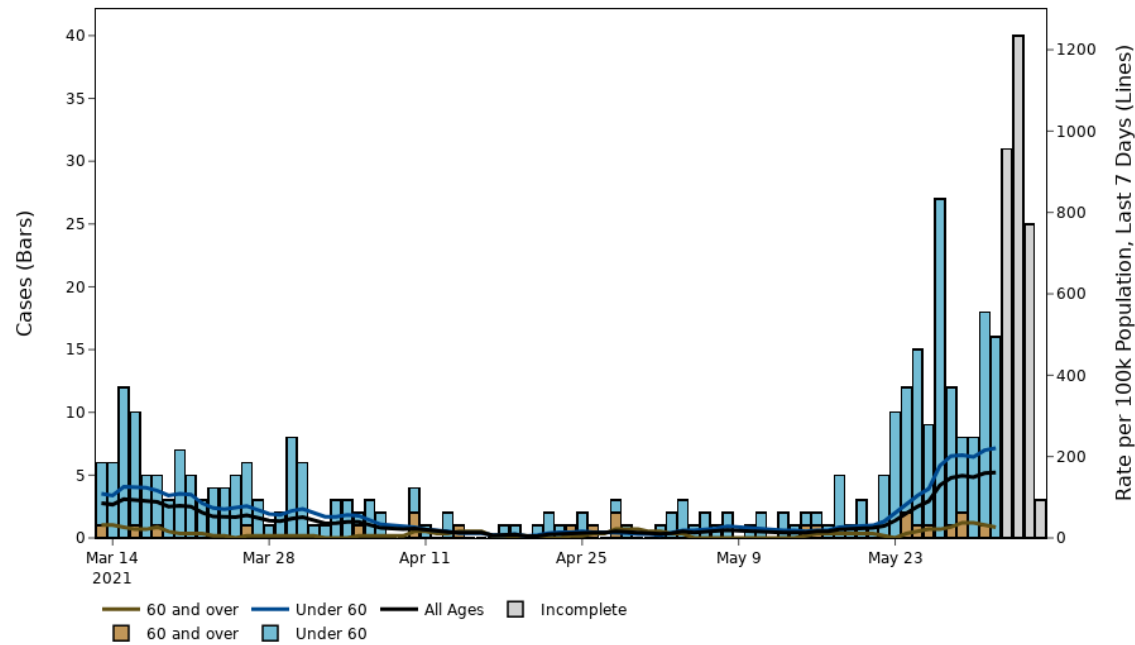
Produced by - Joint Biosecurity Centre

The red dashed line denotes the 4 most recent days data which are provisional



# Ribble Valley

Ribble Valley



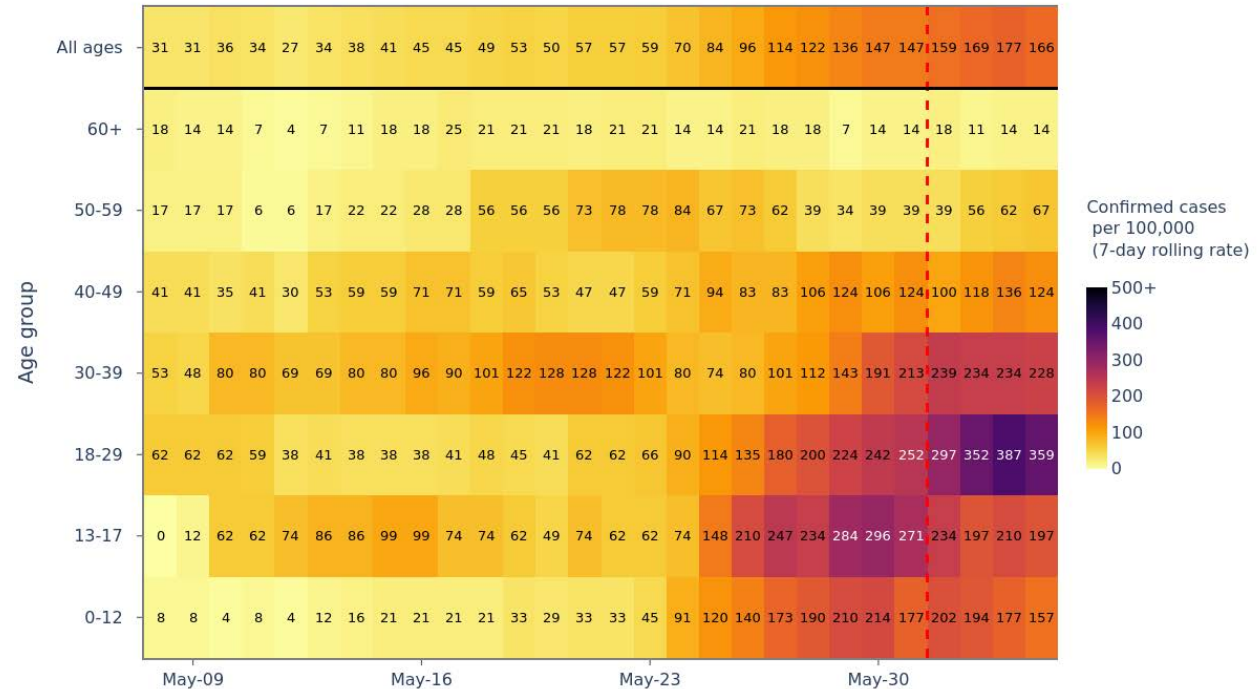
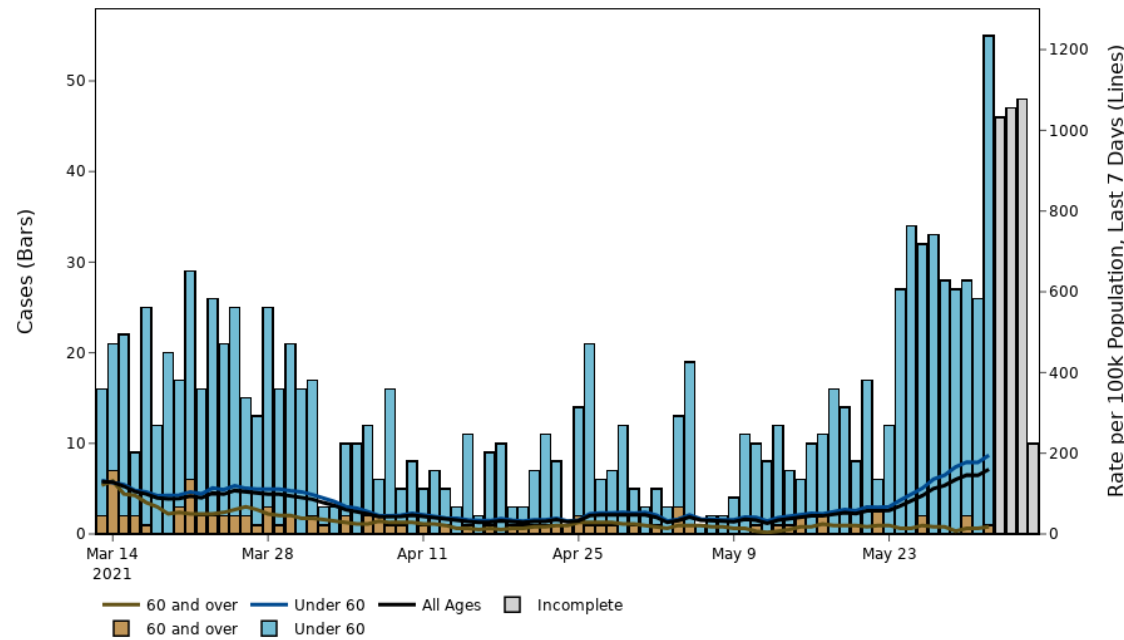
Data source - coronavirus.data.gov.uk

Produced by - Joint Biosecurity Centre

The red dashed line denotes the 4 most recent days data which are provisional

# Preston

Preston

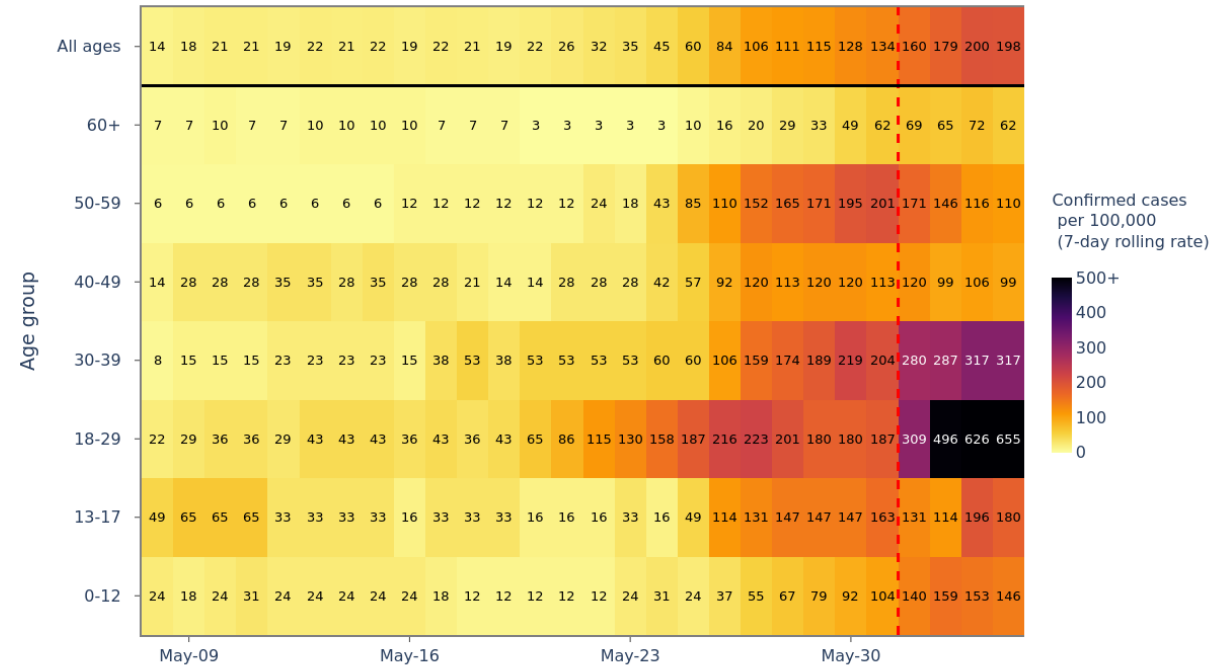
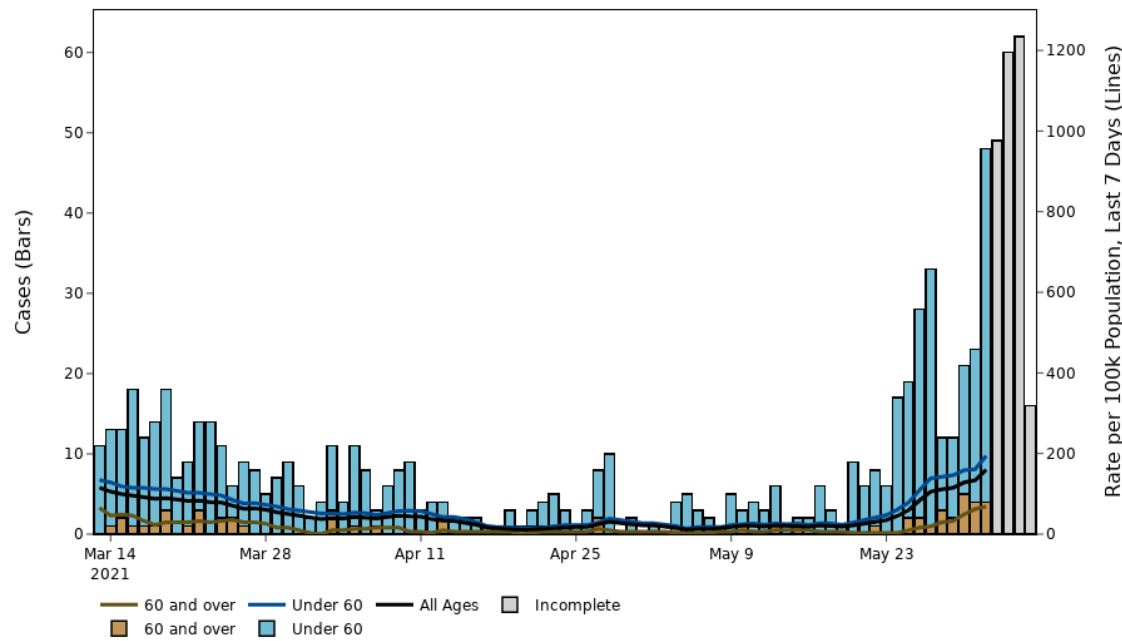


Data source - coronavirus.data.gov.uk Produced by - Joint Biosecurity Centre

The red dashed line denotes the 4 most recent days data which are provisional

# South Ribble

South Ribble



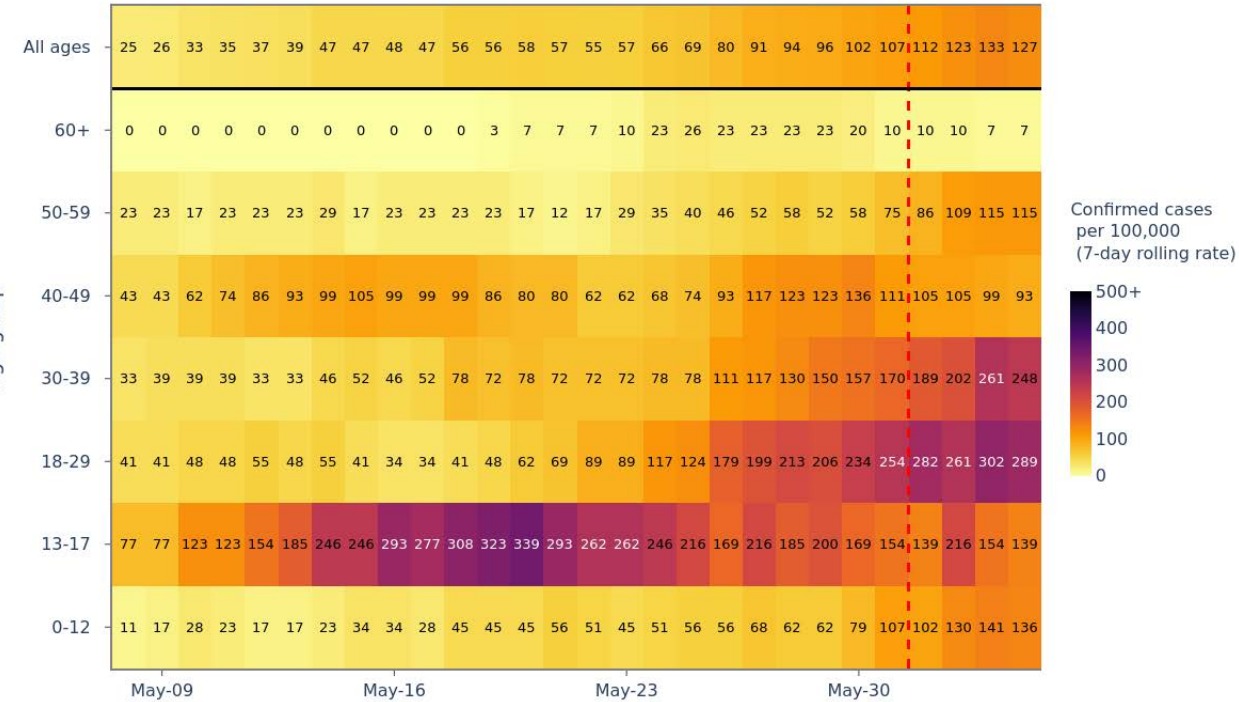
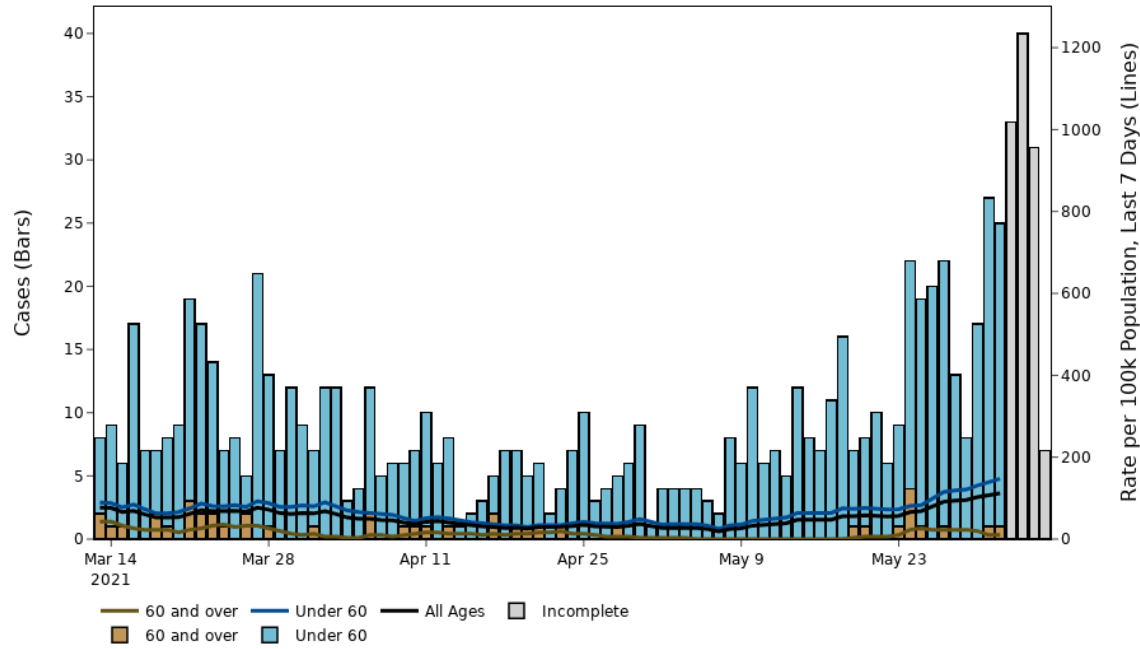
Data source - coronavirus.data.gov.uk

Produced by - Joint Biosecurity Centre

The red dashed line denotes the 4 most recent days data which are provisional

# Chorley

Chorley



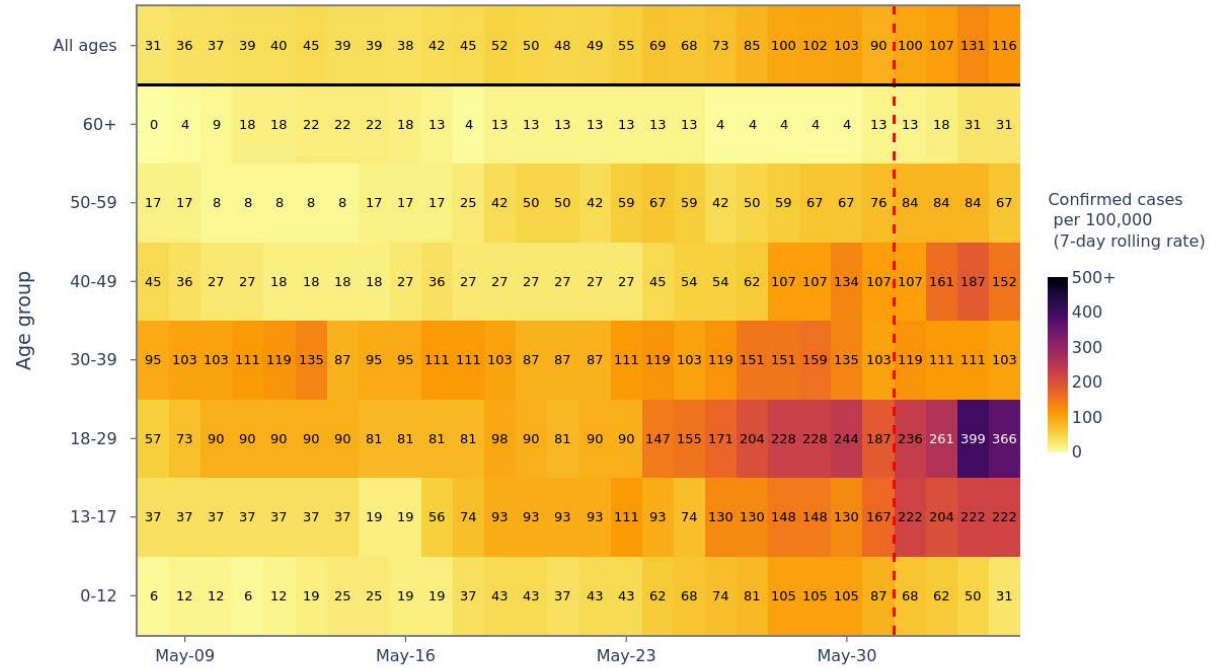
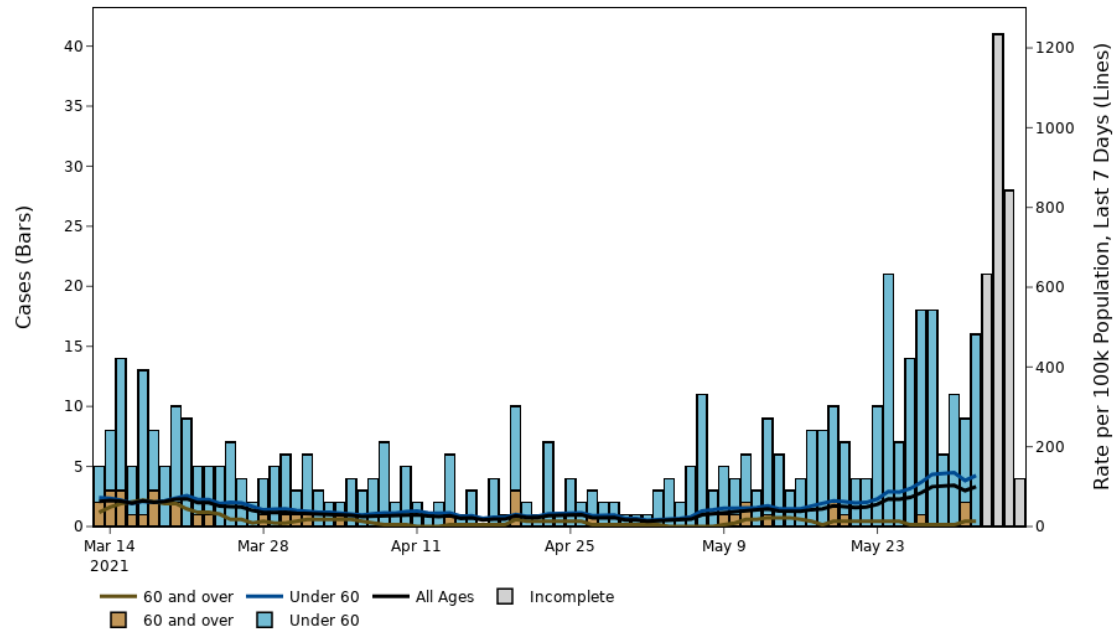
Data source - coronavirus.data.gov.uk

Produced by - Joint Biosecurity Centre

The red dashed line denotes the 4 most recent days data which are provisional

# Pendle

Pendle



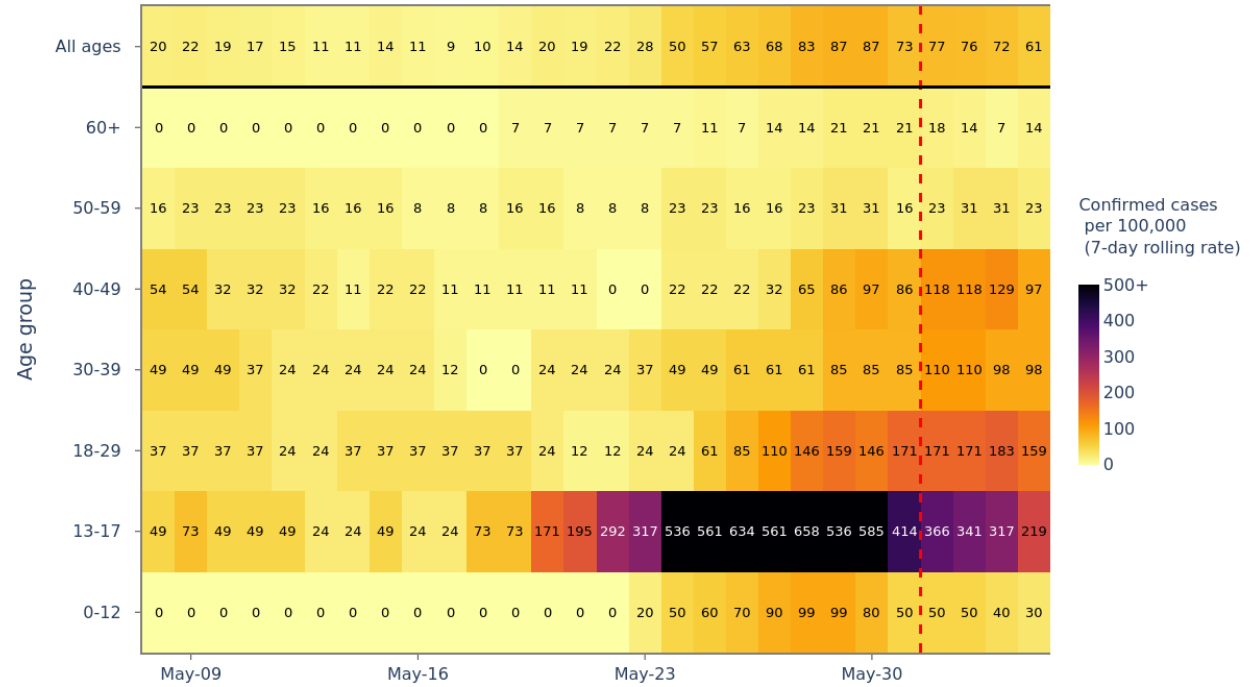
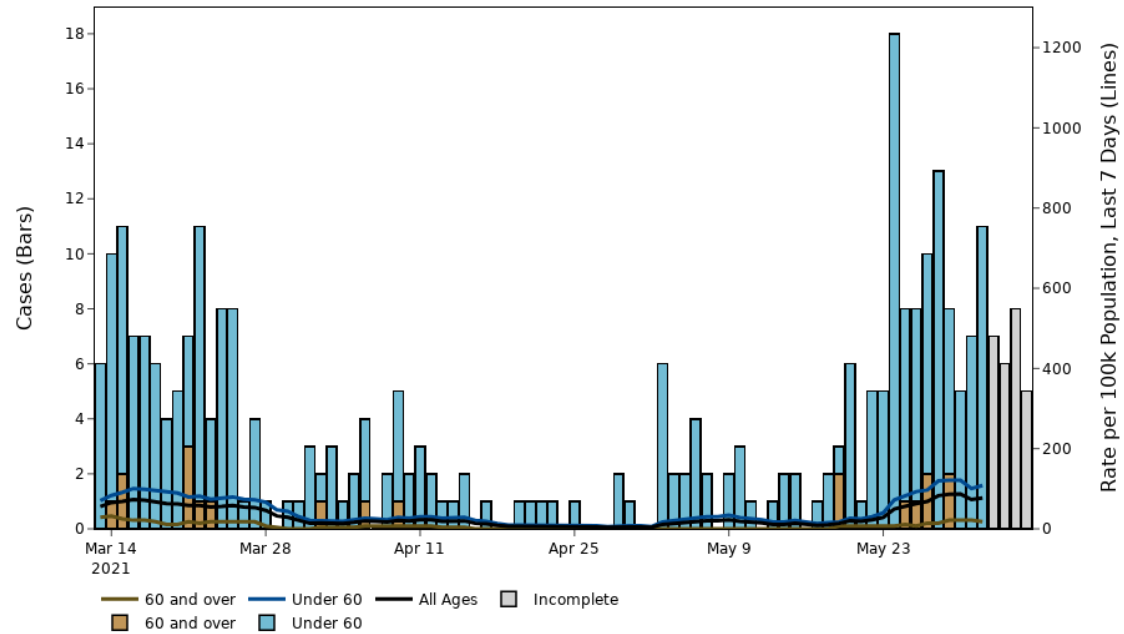
Data source - coronavirus.data.gov.uk

Produced by - Joint Biosecurity Centre

The red dashed line denotes the 4 most recent days data which are provisional

# Fylde

Fylde



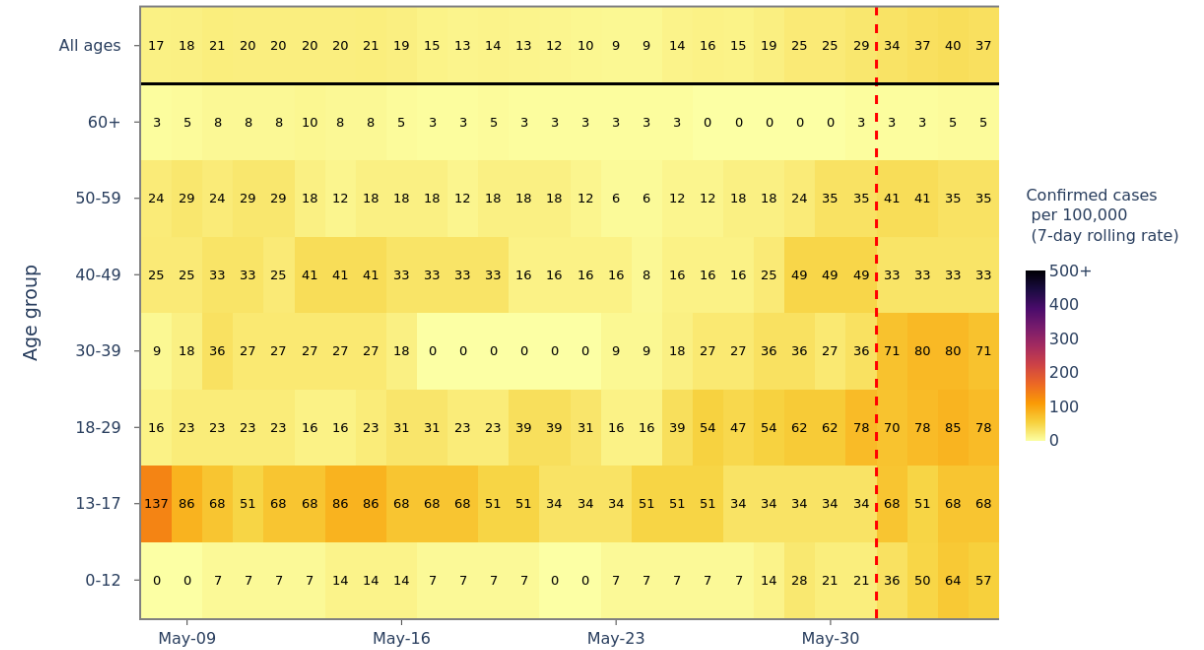
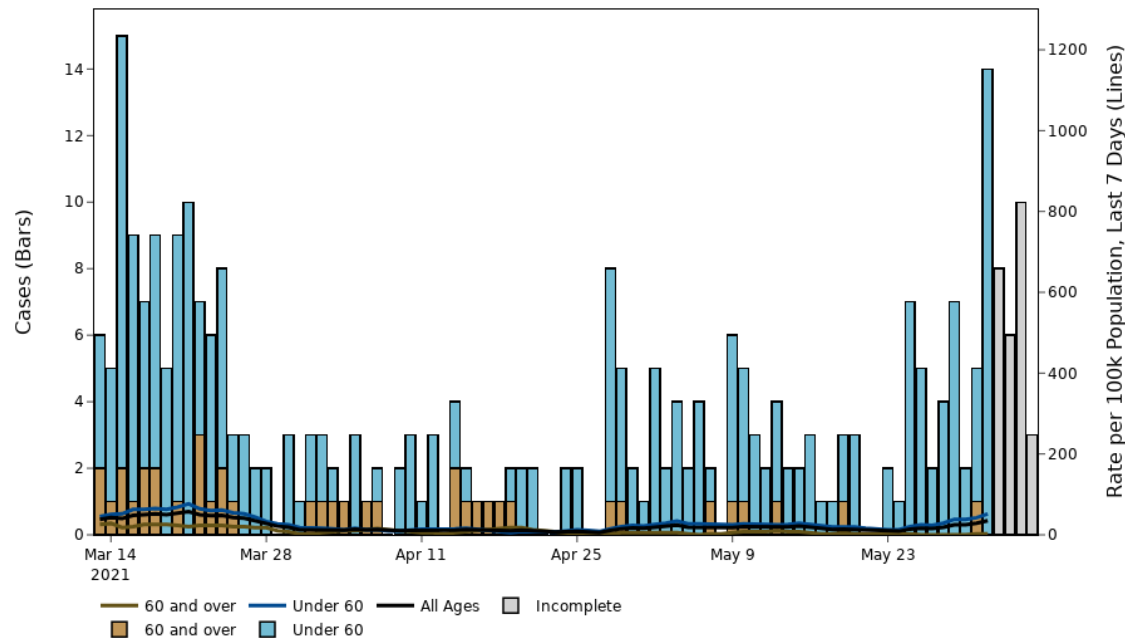
Data source - coronavirus.data.gov.uk

Produced by - Joint Biosecurity Centre

The red dashed line denotes the 4 most recent days data which are provisional

# Wyre

Wyre

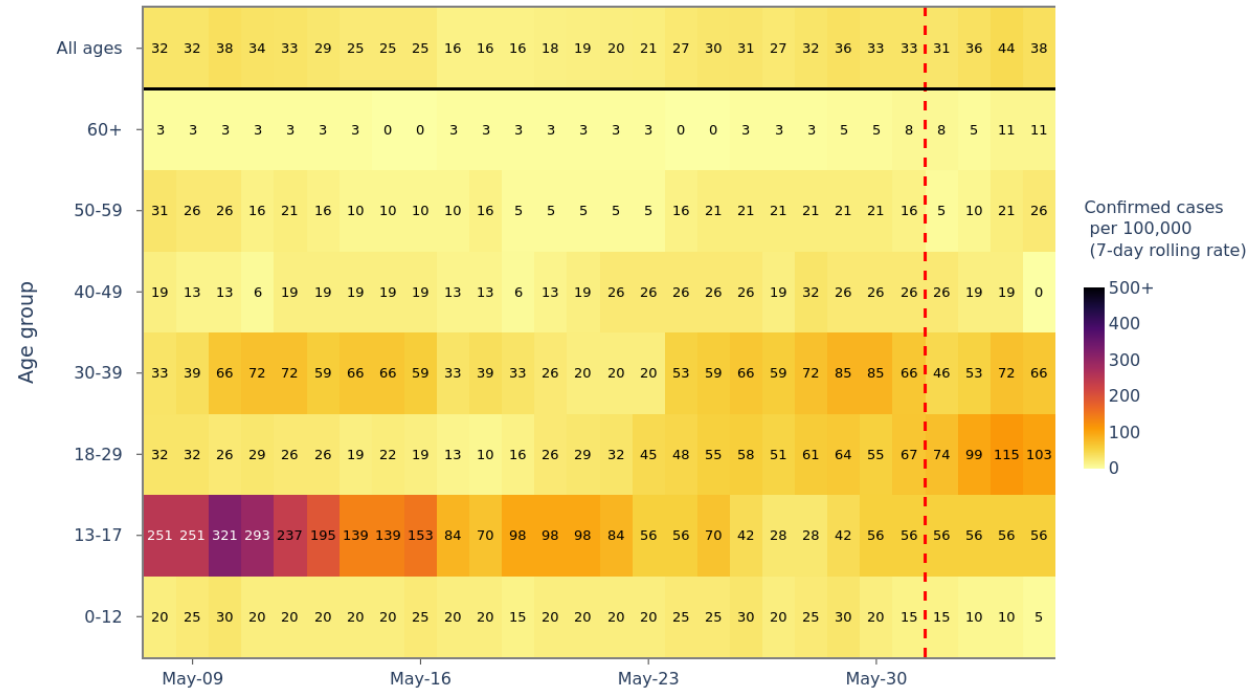
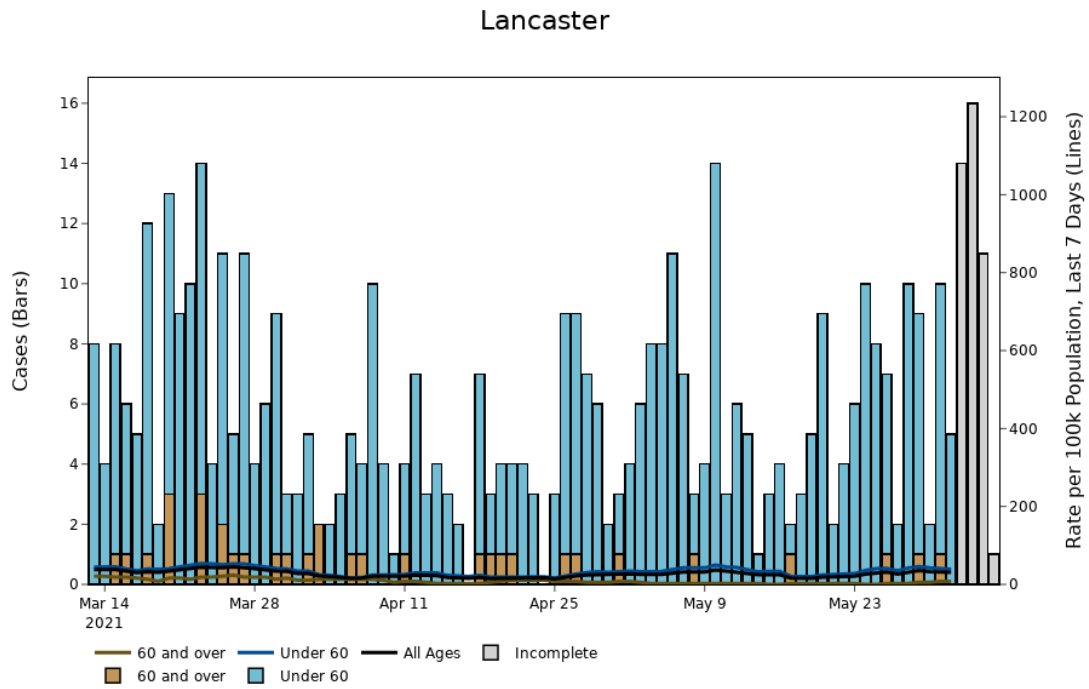


Data source - coronavirus.data.gov.uk

Produced by - Joint Biosecurity Centre

The red dashed line denotes the 4 most recent days data which are provisional

# Lancaster



Data source - coronavirus.data.gov.uk

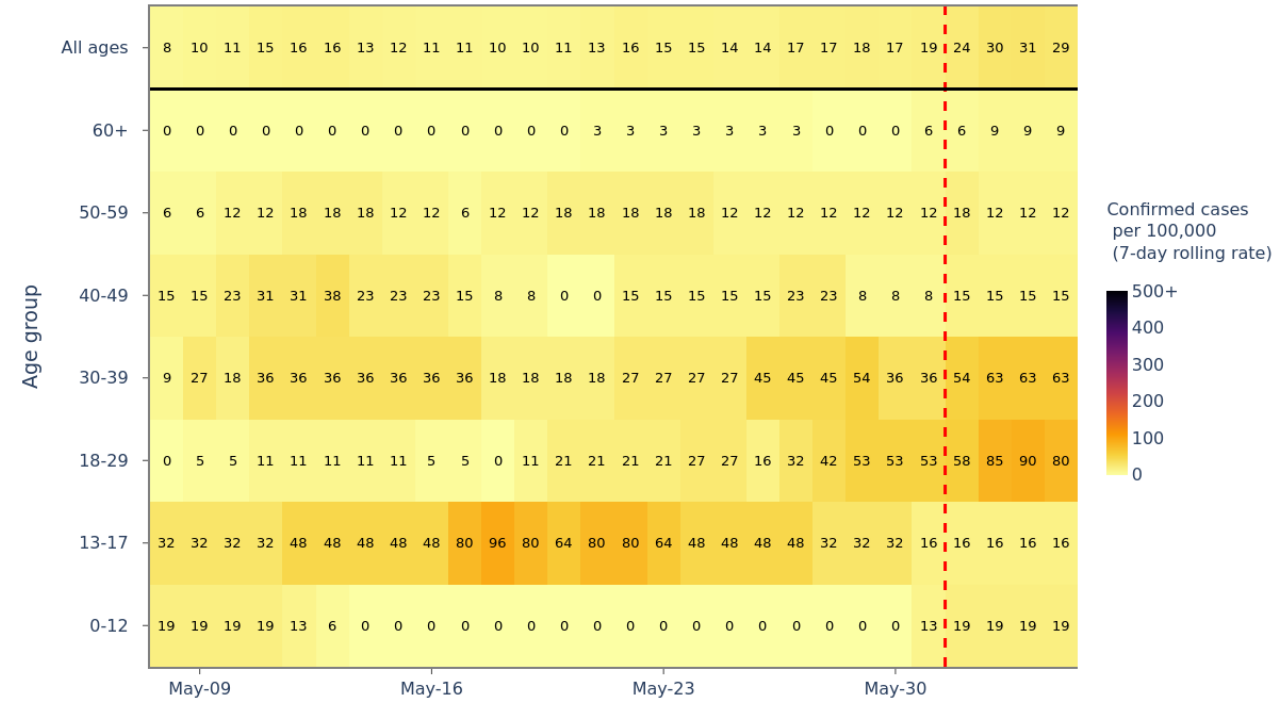
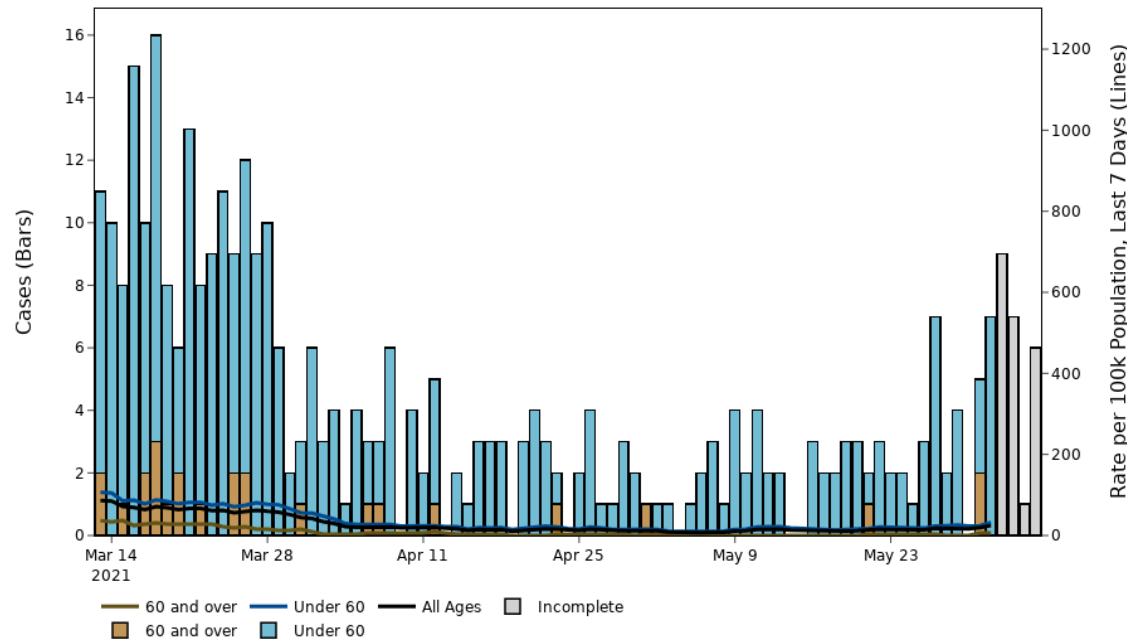
Produced by - Joint Biosecurity Centre

The red dashed line denotes the 4 most recent days data which are provisional



# West Lancashire

West Lancashire



Data source - coronavirus.data.gov.uk

Produced by - Joint Biosecurity Centre

The red dashed line denotes the 4 most recent days data which are provisional

# Areas

# Areas where the delta variant is spreading and are in receipt of strengthened support

	Individuals tested per day per 100,000 population		Percentage individuals test positive		Case rate per 100,000 population		Case rate per 100,000 population aged 60 years and over		Case rate per 100,000 population aged 11 - 16 years olds		Case rate per 100,000 population aged 17 - 21 years olds		Confirmed cases (last 7-days)
	7-day moving average	7-day change. %	7-day moving average	7-day change. %	7-day moving average	7-day change. %	7-day moving average	7-day change. %	7-day moving average	7-day change. %	7-day moving average	7-day change. %	
Blackburn with Darwen	663.2	↑	11.1%	↑	487.7	↑	95.2	↓	1172.3	↑	939.7	↑	730
Bolton	509.6	↓	10.2%	↑	354.7	↓	61.5	↓	710.3	↓	688.5	↑	1020
Rossendale	489.8	↑	9.3%	↑	303.6	↑	73.5	↑	893.0	↓	759.3	↑	217
Hyndburn	456.2	↑	7.9%	↑	243.1	↑	41.2	↑	364.2	↑	478.4	↑	197
Burnley	503.5	↓	4.9%	↑	179.9	↑	9.1	↓	226.9	↑	553.7	↑	160
Manchester	392.0	↑	5.9%	↑	167.9	↑	32.3	↑	397.9	↑	215.9	↑	928
Bury	373.0	↑	6.4%	↑	162.3	↑	41.9	↑	386.7	↑	386.3	↑	310
Ribble Valley	382.7	↑	6.1%	↑	161.0	↑	26.7	↑	309.6	↑	505.2	↑	98
Preston	473.5	↑	4.6%	↑	160.0	↑	17.8	↑	215.5	↑	444.8	↑	229
South Ribble	411.6	↓	5.3%	↑	159.8	↑	68.6	↑	158.6	↑	359.4	↓	177
Salford	401.2	↑	5.5%	↑	158.0	↑	16.4	↑	273.6	↑	278.1	↑	409
Bedford	641.5	↓	3.5%	↑	142.5	↓	24.6	↓	301.6	↓	261.5	↓	247
Stockport	359.4	↑	5.2%	↑	129.5	↑	19.8	↑	274.4	↑	461.2	↑	380
Kirklees	499.7	↑	3.4%	↓	113.0	↑	29.3	↑	344.4	↓	263.0	↑	497
Chorley	464.0	↓	3.2%	↑	111.7	↑	9.8	↓	122.9	↓	432.6	↑	132
Rochdale	352.2	↓	4.4%	↑	103.9	↑	24.6	↑	176.9	↑	255.0	↑	231
Trafford	377.8	↑	3.9%	↑	100.7	↑	24.1	↑	141.0	↑	271.6	↑	239
Pendle	390.8	↓	3.7%	↑	99.9	↑	13.3	→	180.6	↑	320.9	↑	92
Wigan	344.8	↓	4.0%	↑	95.5	↑	24.5	↑	117.1	↑	249.3	↑	314
Leicester	368.4	↓	3.5%	↑	92.6	↑	20.3	↑	237.7	↑	142.0	↓	328
Fylde	497.5	↑	1.9%	↑	76.8	↑	17.8	↑	296.1	↓	90.0	→	62
Oldham	304.8	↓	3.5%	↑	74.6	↑	13.9	→	133.6	↓	148.9	↑	177
North Tyneside	516.8	↓	1.9%	↑	74.1	↑	25.3	↑	108.6	↑	255.2	↑	154
Tameside	311.5	↑	3.2%	↑	72.8	↑	11.4	↑	138.8	↑	95.9	↑	165
Hounslow	701.0	↑	1.0%	↓	48.6	↓	13.1	↓	94.6	↓	51.6	↓	132
Wyre	412.5	↓	1.2%	↑	34.8	↑	2.6	→	69.5	↑	101.5	→	39
Lancaster	361.3	↓	1.2%	↑	30.8	↑	8.0	↑	22.2	↓	70.6	↑	45
West Lancashire	328.1	↓	1.1%	↑	24.5	↑	6.2	↑	0.0	↓	66.6	↑	28