



Department  
of Health &  
Social Care

# West Midlands lower tier local authority watchlist, epidemiological charts

Produced 30 May 2021

## Notes

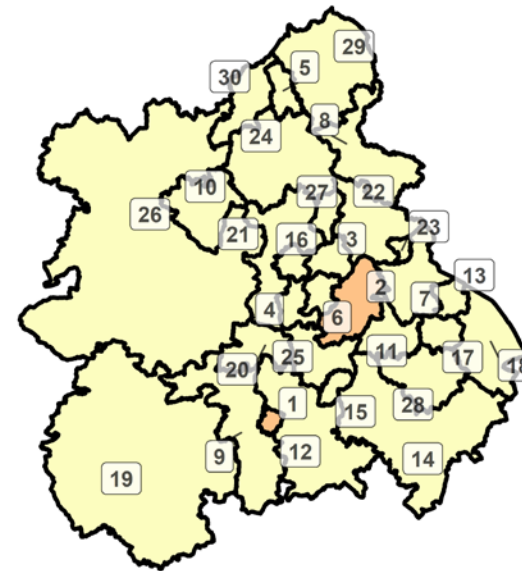
- This data is provided by Public Health England for the purpose of monitoring and supporting the management of COVID-19 infections in local authorities.
- The reports are produced using 2019 Office for National Statistics population data.
- If you would like to know the weekly trend for the case rate charts and persons tested chart please see lower tier local authority watchlist.

# Weekly case rate per 100,000 population by local authority from 19 May to 25 May 2021

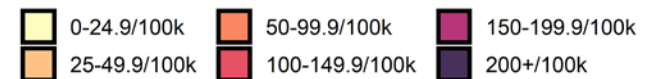
Rank	Local Authority	Case Rate (per 100,000)	Number of cases (1 week)
1	Worcester	45.4	46
2	Birmingham	32.8	374
3	Walsall	23.1	66
4	Dudley	21.1	68
5	Stoke-on-Trent	21.1	54
6	Sandwell	19.8	65
7	North Warwickshire	16.9	11
8	East Staffordshire	16.7	20
9	Malvern Hills	15.2	12
10	Telford and Wrekin	15.0	27
11	Solihull	14.8	32
12	Wychavon	13.9	18
13	Nuneaton and Bedworth	13.1	17
14	Stratford-on-Avon	13.1	17
15	Redditch	12.9	11

Rank	Local Authority	Case Rate (per 100,000)	Number of cases (1 week)
16	Wolverhampton	12.9	34
17	Coventry	12.4	46
18	Rugby	11.0	12
19	Herefordshire, County of	10.9	21
20	Wyre Forest	10.9	11
21	South Staffordshire	10.7	12
22	Lichfield	8.6	9
23	Tamworth	7.8	6
24	Stafford	7.3	10
25	Bromsgrove	7.0	7
26	Shropshire	5.9	19
27	Cannock Chase	5.0	5
28	Warwick	4.9	7
29	Staffordshire Moorlands	4.1	4
30	Newcastle-under-Lyme	3.9	5

**West Midlands**  
**COVID-19 cases: 19 May to 25 May 2021**  
 Weekly case rates per 100,000 population by local authority



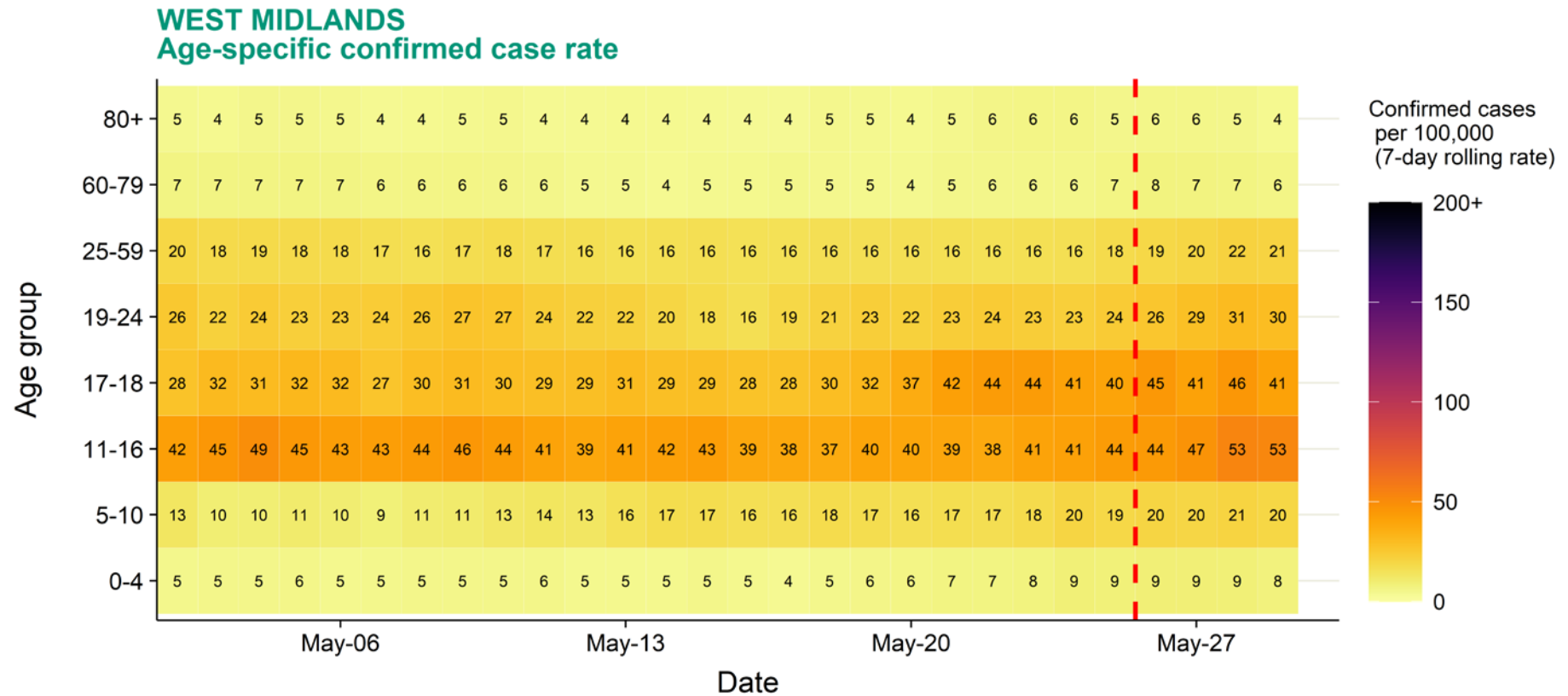
Covid-19 rate by local authority



Data from SGSS; Pillar 1 and 2 testing. Figure by Outbreak Surveillance Team, Public Health England.

Contains National Statistics data including 2019 population estimates Â© Crown copyright and database right 2020

# West Midlands age-stratified heatmap of weekly case rate, 2 May to 25 May 2021



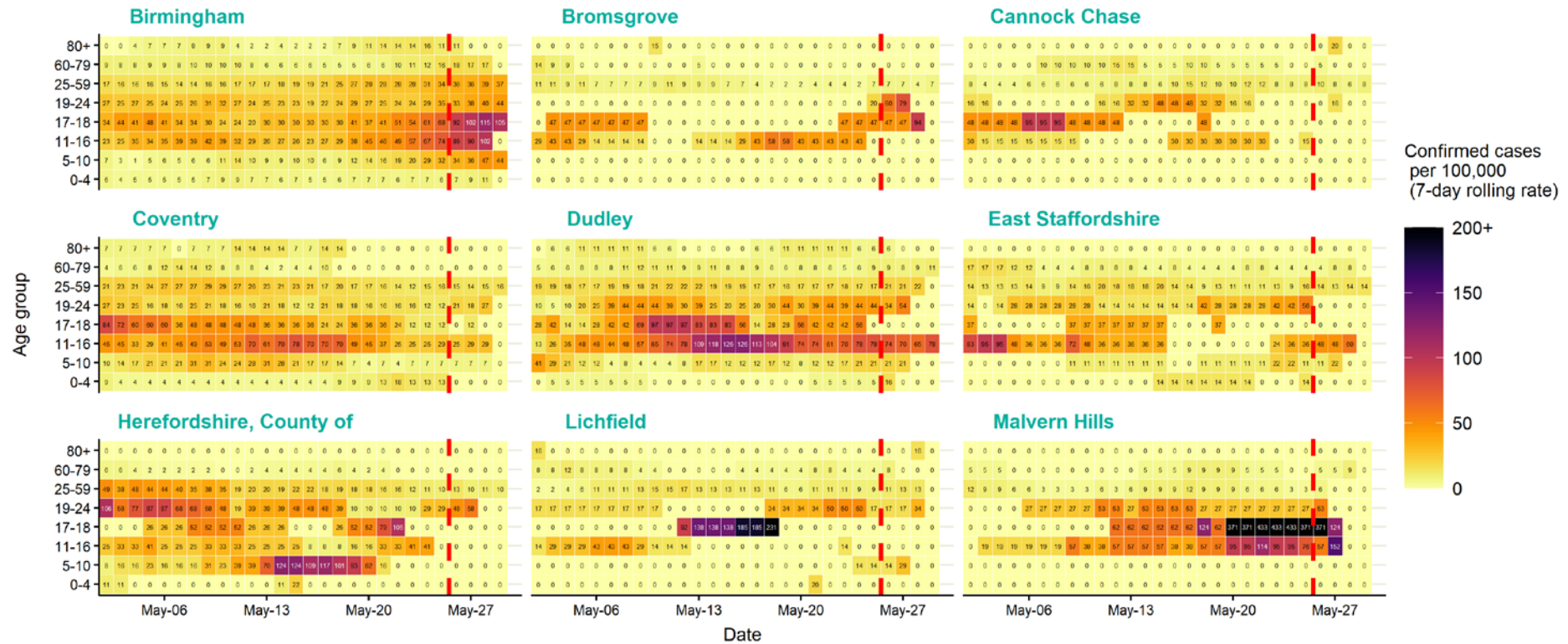
Source: Case data from SGSS. Produced by Outbreak Surveillance Team, PHE

The red dashed line on the heatmaps show the last four days where data may be incomplete due to reporting delays and removal of LFDs with accompanying negative PCR results.

Please consider this data provisional.

# West Midlands age-stratified heatmap of weekly case rate by local authority, 2 May to 25 May 2021

## WEST MIDLANDS LOCAL AUTHORITIES Age-specific confirmed case rate



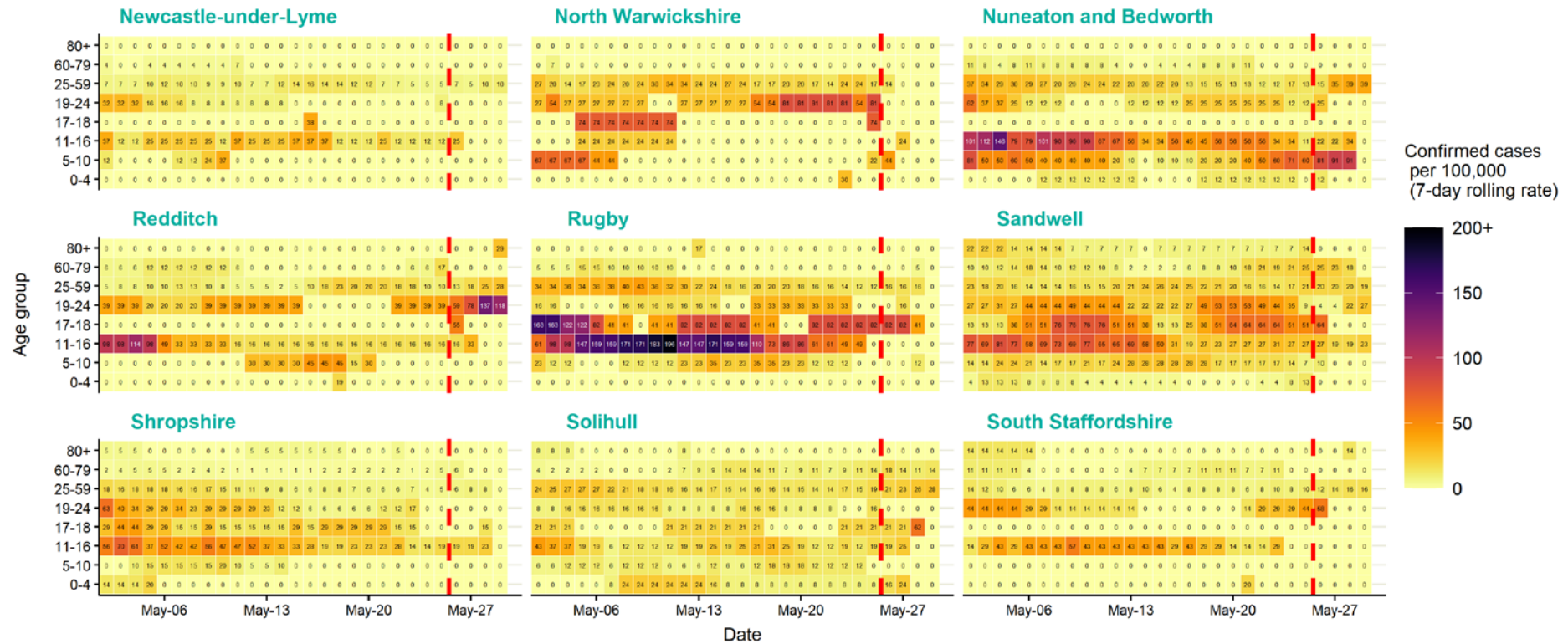
Source: Case data from SGSS. Produced by Outbreak Surveillance Team, PHE

The red dashed line on the heatmaps show the last four days where data may be incomplete due to reporting delays and removal of LFDs with accompanying negative PCR results.

Please consider this data provisional.

# West Midlands age-stratified heatmap of weekly case rate by local authority, 2 May to 25 May 2021

## WEST MIDLANDS LOCAL AUTHORITIES Age-specific confirmed case rate



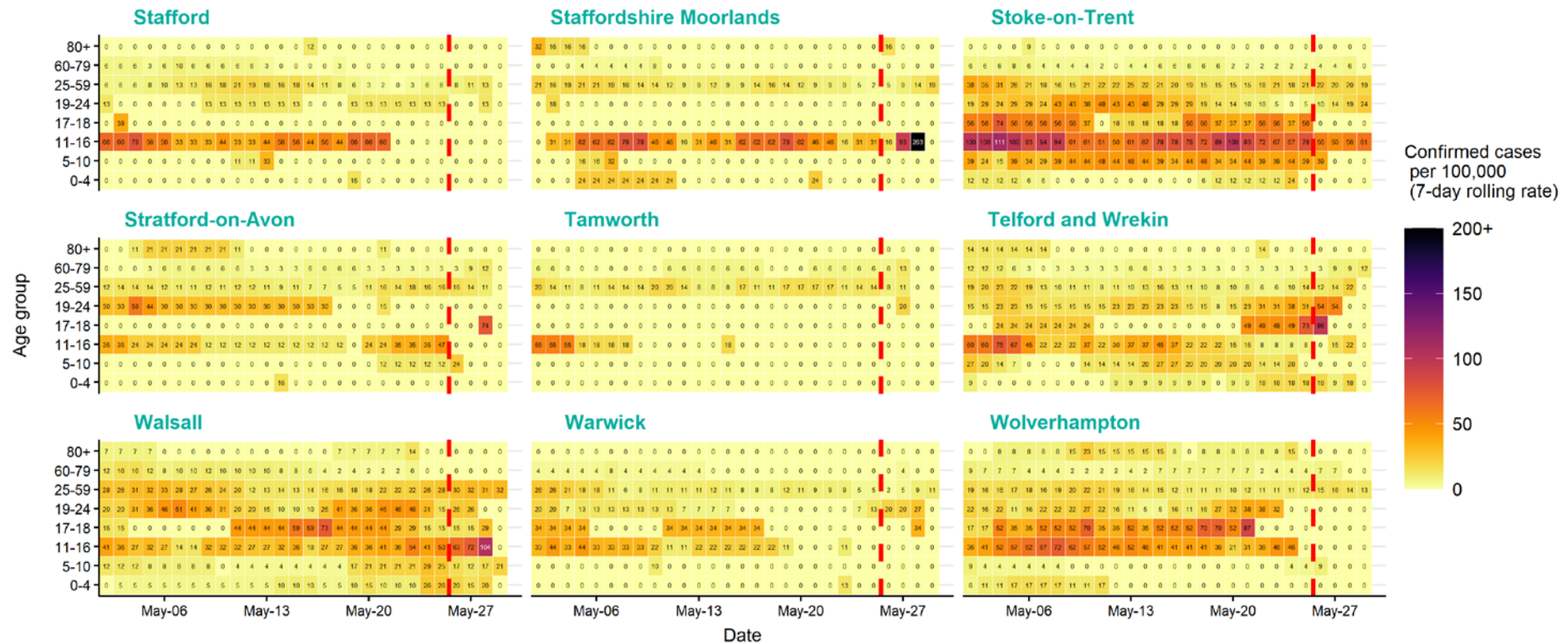
Source: Case data from SGSS. Produced by Outbreak Surveillance Team, PHE

The red dashed line on the heatmaps show the last four days where data may be incomplete due to reporting delays and removal of LFDs with accompanying negative PCR results.

Please consider this data provisional.

# West Midlands age-stratified heatmap of weekly case rate by local authority, 2 May to 25 May 2021

## WEST MIDLANDS LOCAL AUTHORITIES Age-specific confirmed case rate

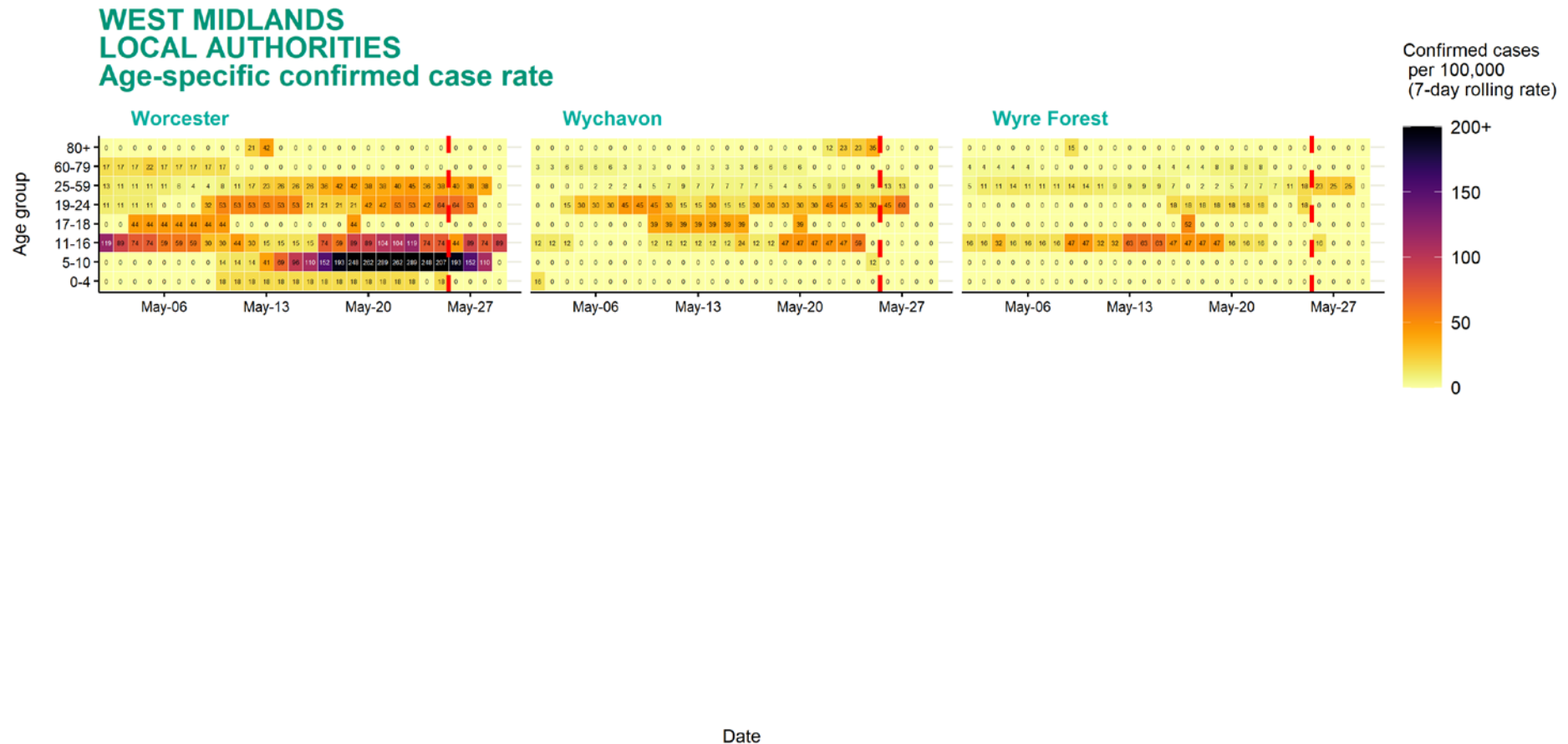


Source: Case data from SGSS. Produced by Outbreak Surveillance Team, PHE

The red dashed line on the heatmaps show the last three days where data may be incomplete due to reporting delays and removal of LFDs with accompanying negative PCR results.

Please consider this data provisional.

# West Midlands age-stratified heatmap of weekly case rate by local authority, 2 May to 25 May 2021



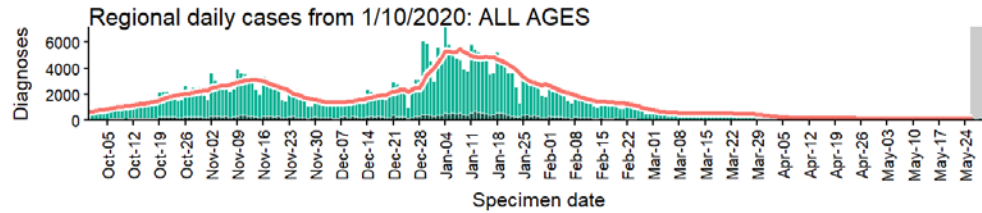
Source: Case data from SGSS. Produced by Outbreak Surveillance Team, PHE

The red dashed line on the heatmaps show the last four days where data may be incomplete due to reporting delays and removal of LFDs with accompanying negative PCR results.

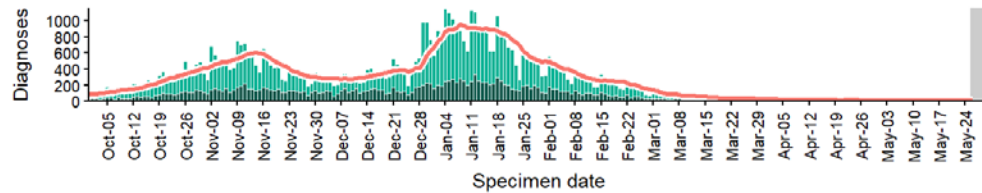
Please consider this data provisional.

# West Midlands regional case numbers, testing numbers and positivity, 1 Oct to 29 May 2021

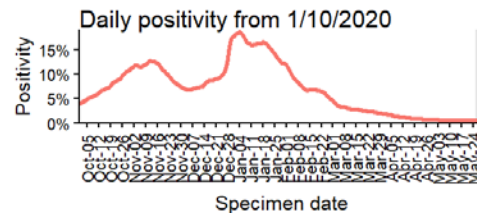
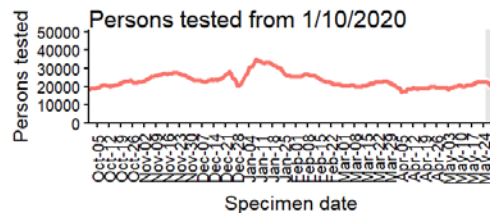
## WEST MIDLANDS Cases and persons tested up to May 29 2021



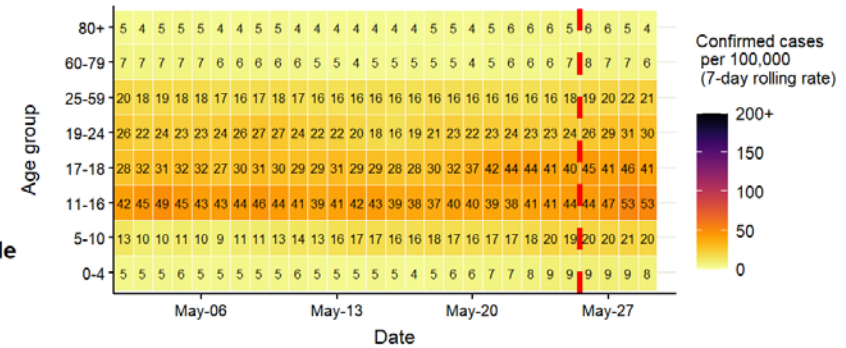
### Regional daily cases from 1/10/2020: 60+ YEARS ONLY NOTE: different y-axis scale



4 days with incomplete data Pillar 1 Pillar 2 Total 7 day moving average (P1 + P2)



## Regional age-stratified case rate heatmap for West Midlands: 2 May to 29 May 2021,



The red dotted line denotes the last four days, subject to reporting delays

Data from SGSS. Produced by Outbreak Surveillance Team, PHE

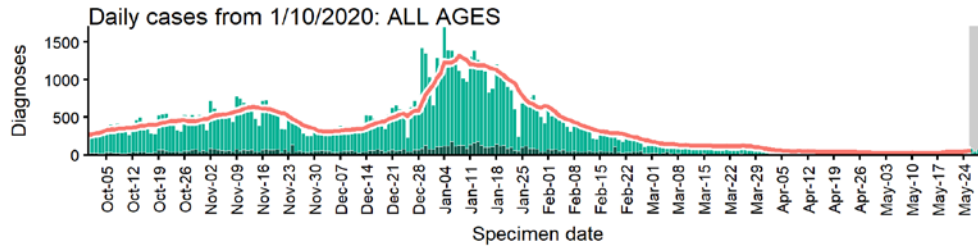
The red dashed line on the heatmaps show the last four days where data may be incomplete due to reporting delays and removal of LFDs with accompanying negative PCR results.

Please consider this data provisional.

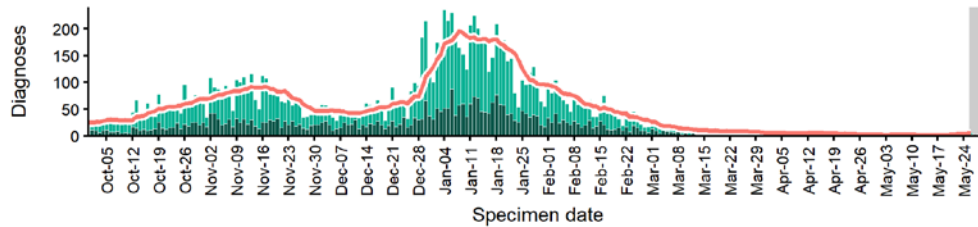


# Birmingham case numbers, testing numbers and positivity, 1 Oct to 29 May 2021

## BIRMINGHAM Cases and persons tested up to May 29 2021

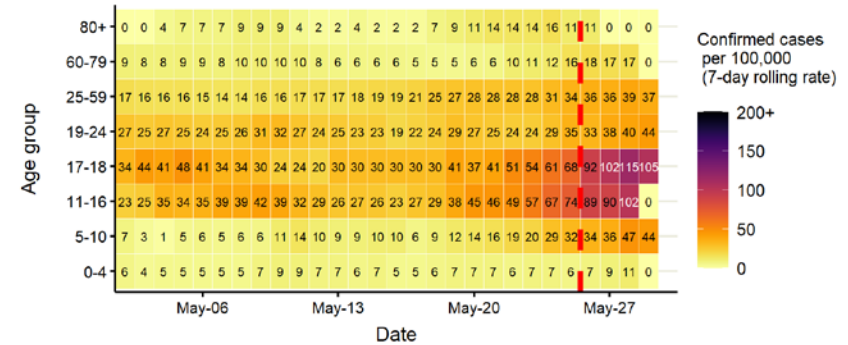


### Daily cases from 1/10/2020: 60+ YEARS ONLY **NOTE: different y-axis scale**

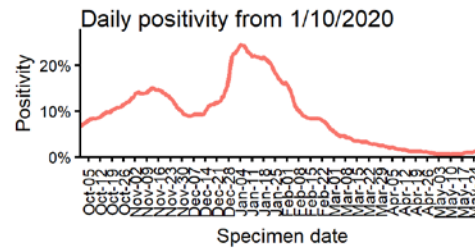
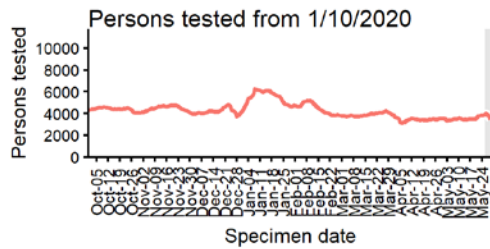


4 days with incomplete data Pillar 1 Pillar 2 Total 7 day moving average (P1 + P2)

## Age-stratified case rate heatmap for Birmingham: 2 May to 29 May 2021



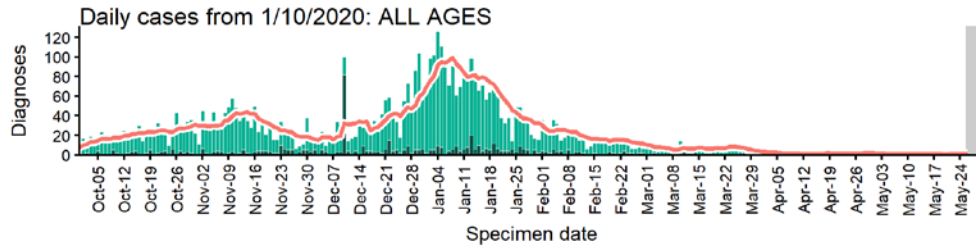
The red dashed line on the heatmaps show the last four days where data may be incomplete due to reporting delays and removal of LFDs with accompanying negative PCR results. Please consider this data provisional.



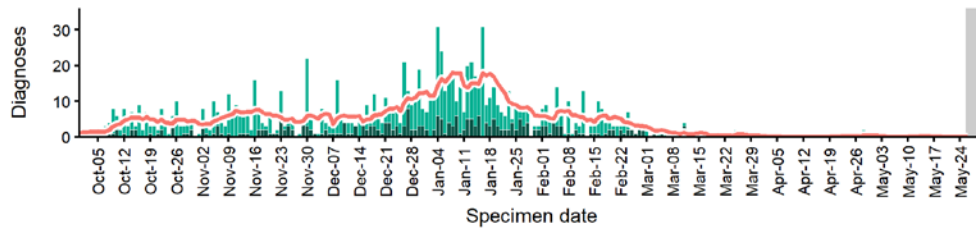
Data from SGSS. Produced by Outbreak Surveillance Team, PHE

# Bromsgrove case numbers, testing numbers and positivity, 1 Oct to 29 May 2021

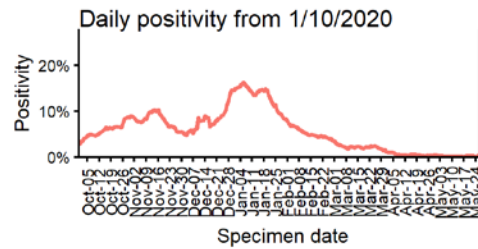
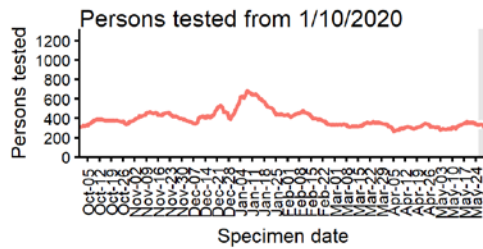
## BROMSGROVE Cases and persons tested up to May 29 2021



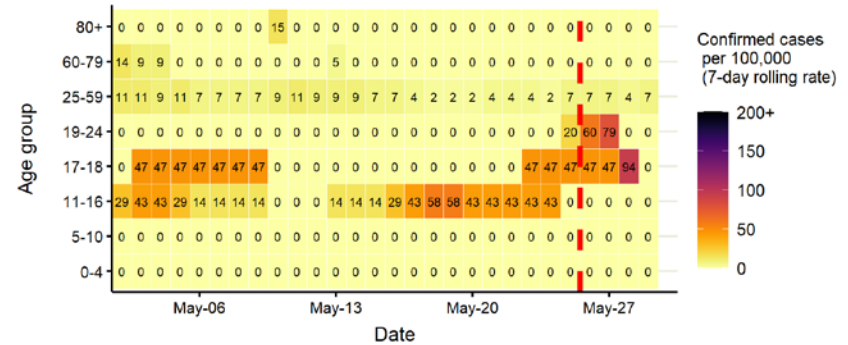
### Daily cases from 1/10/2020: 60+ YEARS ONLY **NOTE: different y-axis scale**



4 days with incomplete data Pillar 1 Pillar 2 Total 7 day moving average (P1 + P2)



## Age-stratified case rate heatmap for Bromsgrove: 2 May to 29 May 2021

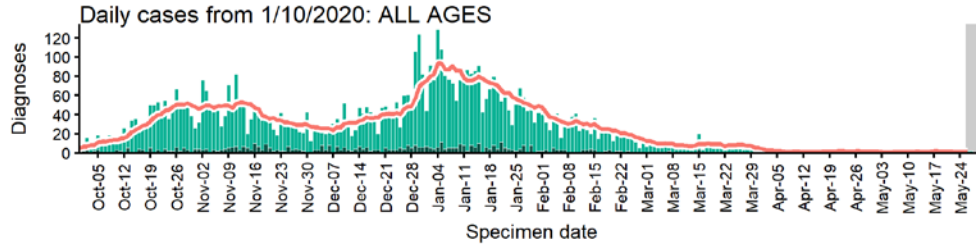


The red dashed line on the heatmaps show the last four days where data may be incomplete due to reporting delays and removal of LFDs with accompanying negative PCR results. Please consider this data provisional.

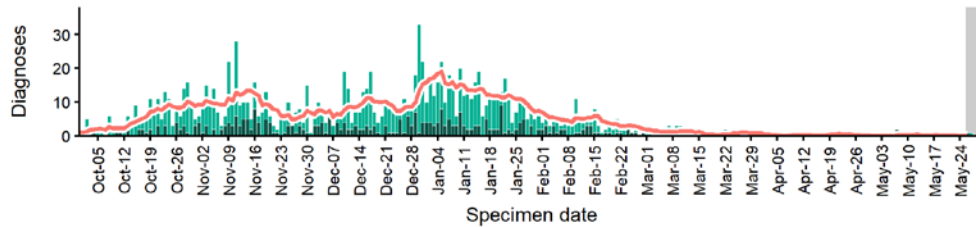
Data from SGSS. Produced by Outbreak Surveillance Team, PHE

# Cannock Chase case numbers, testing numbers and positivity, 1 Oct to 29 May 2021

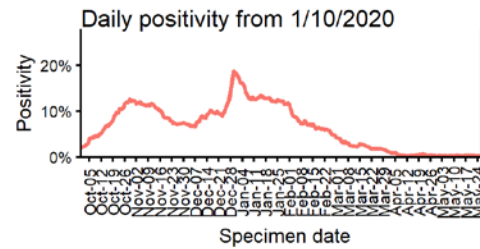
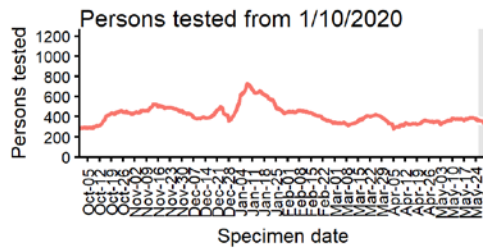
## CANNOCK CHASE Cases and persons tested up to May 29 2021



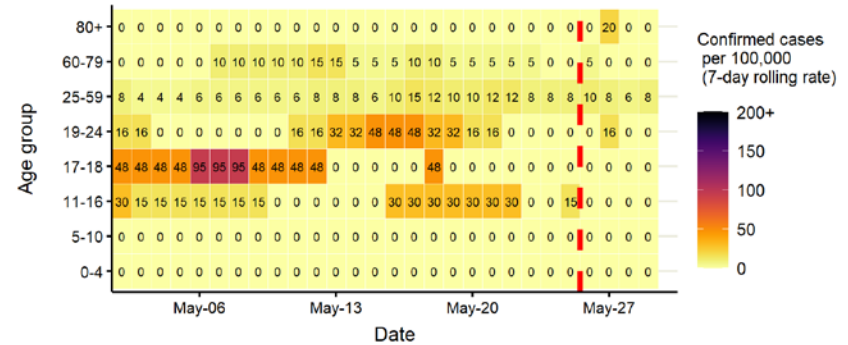
### Daily cases from 1/10/2020: 60+ YEARS ONLY **NOTE: different y-axis scale**



4 days with incomplete data Pillar 1 Pillar 2 Total 7 day moving average (P1 + P2)



## Age-stratified case rate heatmap for Cannock Chase: 2 May to 29 May 2021

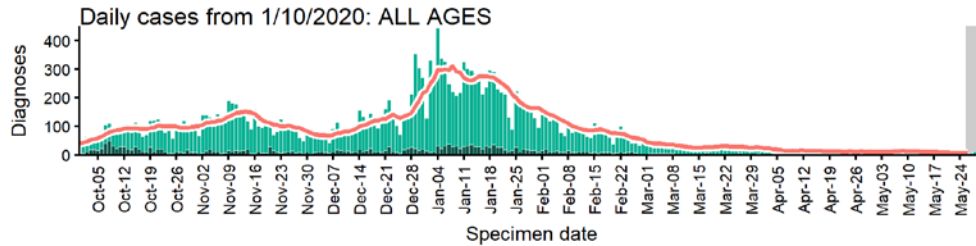


The red dashed line on the heatmaps show the last four days where data may be incomplete due to reporting delays and removal of LFDs with accompanying negative PCR results. Please consider this data provisional.

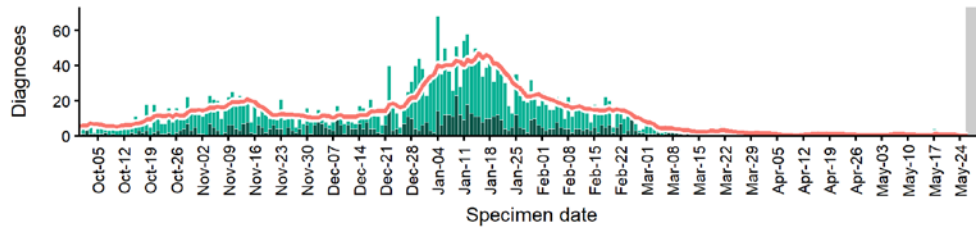
Data from SGSS. Produced by Outbreak Surveillance Team, PHE

# Coventry case numbers, testing numbers and positivity, 1 Oct to 29 May 2021

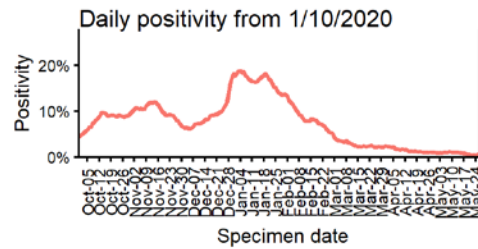
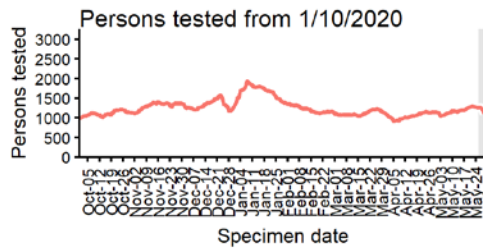
## COVENTRY Cases and persons tested up to May 29 2021



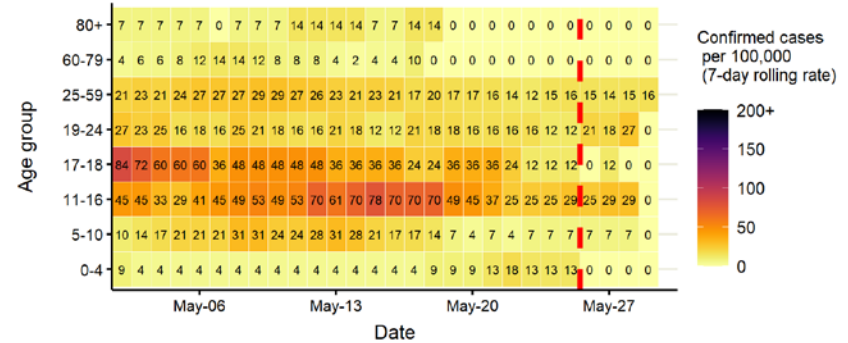
### Daily cases from 1/10/2020: 60+ YEARS ONLY **NOTE: different y-axis scale**



4 days with incomplete data
  Pillar 1
  Pillar 2
  Total 7 day moving average (P1 + P2)



## Age-stratified case rate heatmap for Coventry: 2 May to 29 May 2021

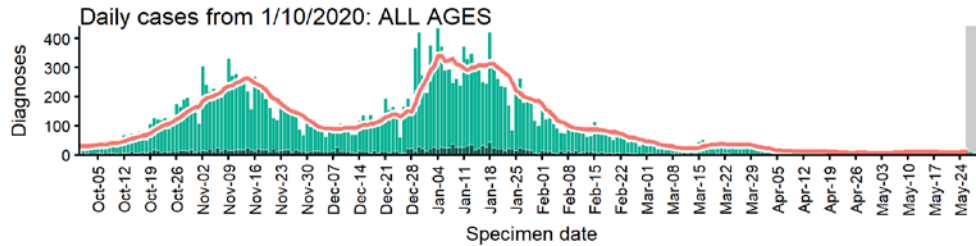


The red dashed line on the heatmaps show the last four days where data may be incomplete due to reporting delays and removal of LFDs with accompanying negative PCR results. Please consider this data provisional.

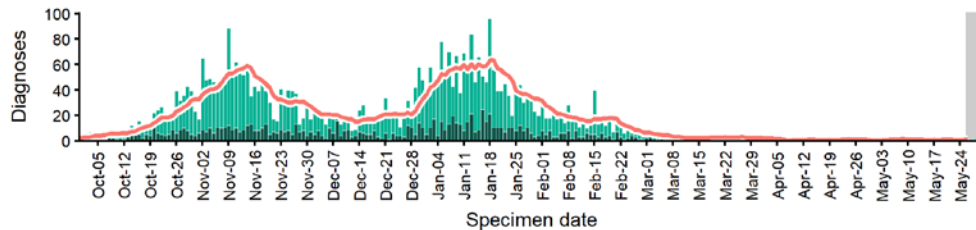
Data from SGSS. Produced by Outbreak Surveillance Team, PHE

# Dudley case numbers, testing numbers and positivity, 1 Oct to 29 May 2021

**DUDLEY**  
Cases and persons tested up to May 29 2021

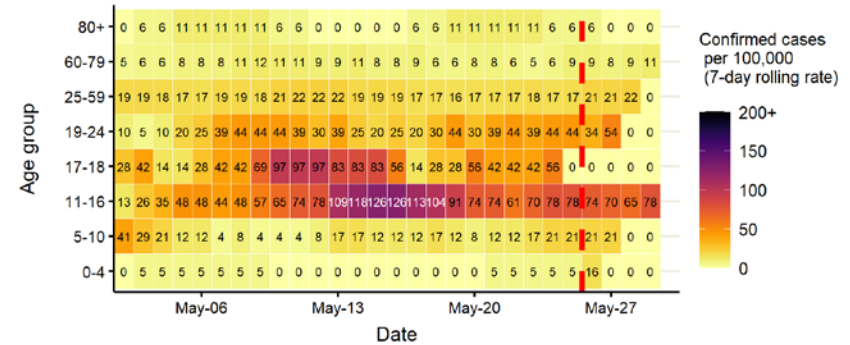


Daily cases from 1/10/2020: 60+ YEARS ONLY **NOTE: different y-axis scale**

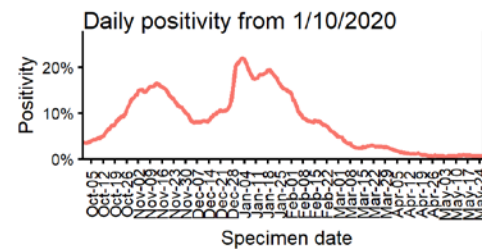
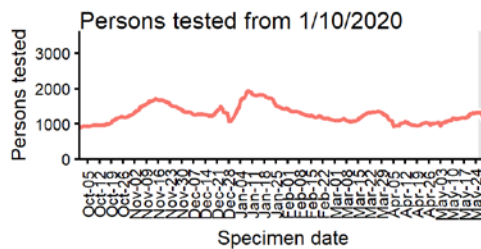


4 days with incomplete data Pillar 1 Pillar 2 Total 7 day moving average (P1 + P2)

Age-stratified case rate heatmap for Dudley: 2 May to 29 May 2021



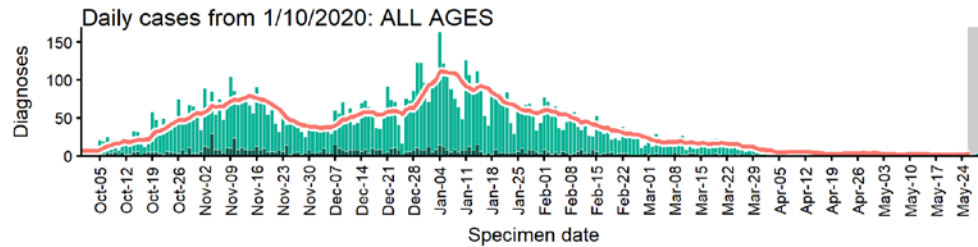
The red dashed line on the heatmaps show the last four days where data may be incomplete due to reporting delays and removal of LFDs with accompanying negative PCR results. Please consider this data provisional.



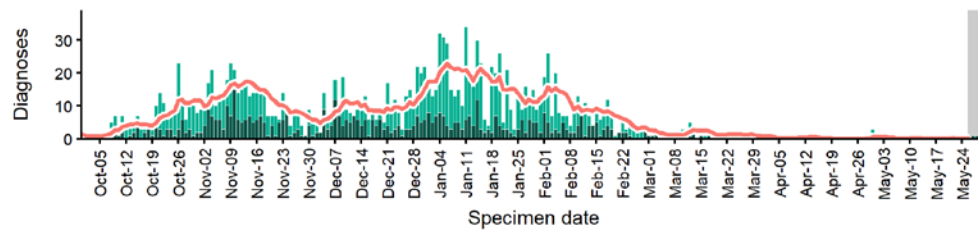
Data from SGSS. Produced by Outbreak Surveillance Team, PHE

# East Staffordshire case numbers, testing numbers and positivity, 1 Oct to 29 May 2021

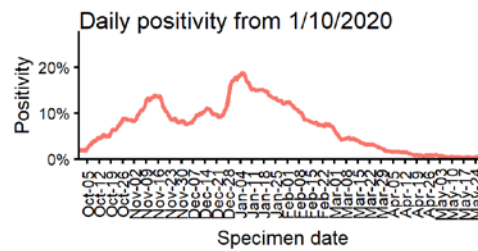
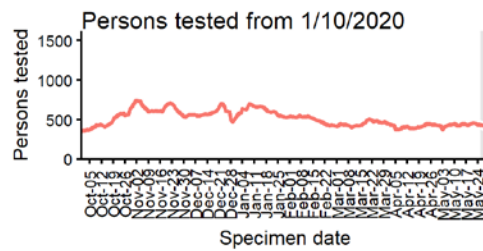
**EAST STAFFORDSHIRE**  
Cases and persons tested up to May 29 2021



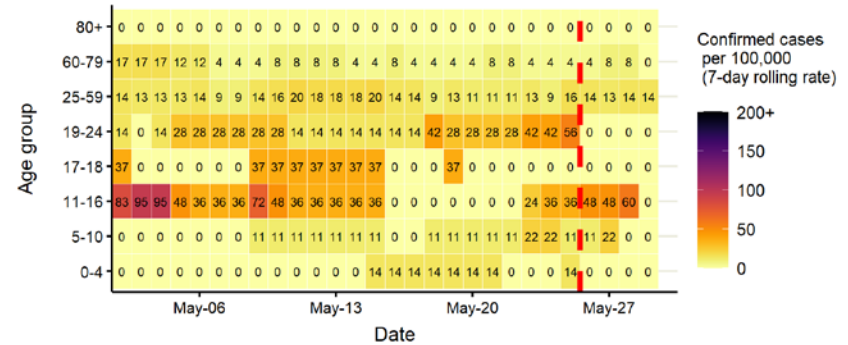
Daily cases from 1/10/2020: 60+ YEARS ONLY **NOTE: different y-axis scale**



4 days with incomplete data Pillar 1 Pillar 2 Total 7 day moving average (P1 + P2)



Age-stratified case rate heatmap for East Staffordshire: 2 May to 29 May 2021

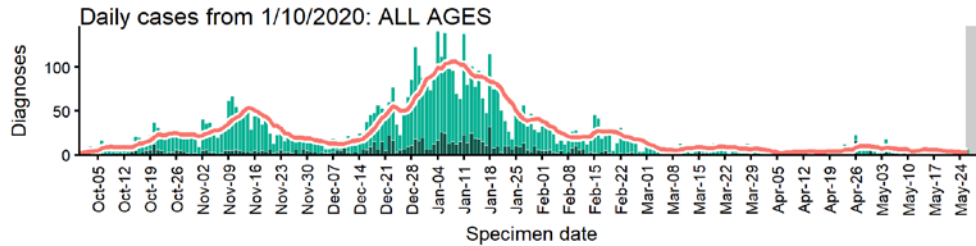


The red dashed line on the heatmaps show the last four days where data may be incomplete due to reporting delays and removal of LFDs with accompanying negative PCR results. Please consider this data provisional.

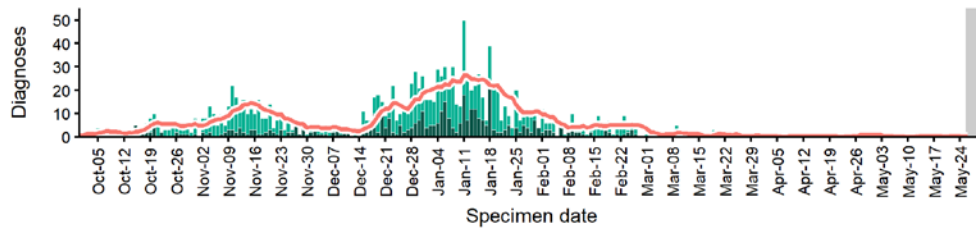
Data from SGSS. Produced by Outbreak Surveillance Team, PHE

# Herefordshire, County of case numbers, testing numbers and positivity, 1 Oct to 29 May 2021

**HEREFORDSHIRE, COUNTY OF**  
**Cases and persons tested up to May 29 2021**

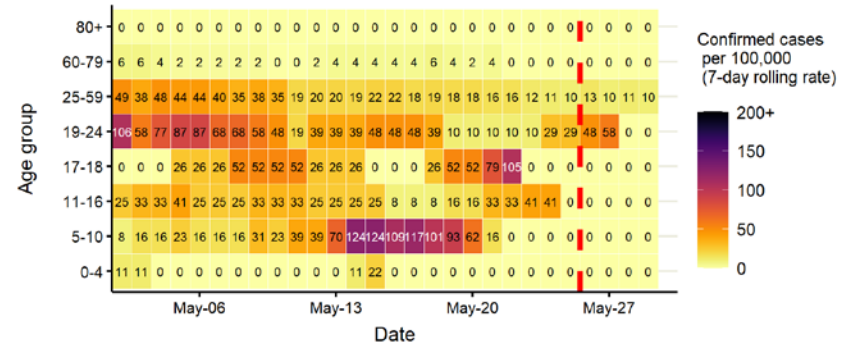


Daily cases from 1/10/2020: 60+ YEARS ONLY **NOTE: different y-axis scale**

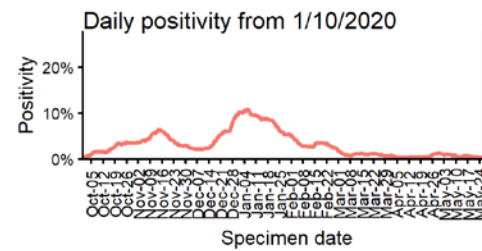
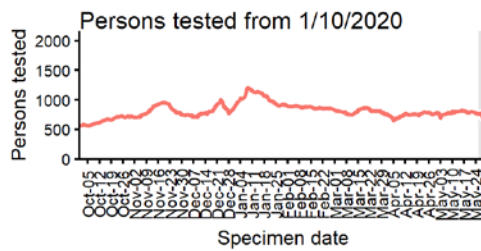


4 days with incomplete data Pillar 1 Pillar 2 Total 7 day moving average (P1 + P2)

Age-stratified case rate heatmap for Herefordshire, County of: 2  
 May to 29 May 2021



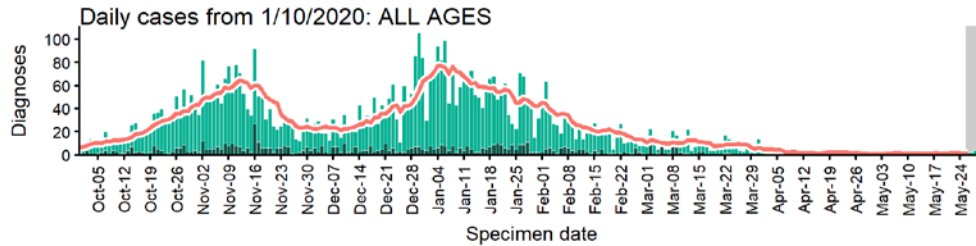
The red dashed line on the heatmaps show the last four days where data may be incomplete due to reporting delays and removal of LFDs with accompanying negative PCR results. Please consider this data provisional.



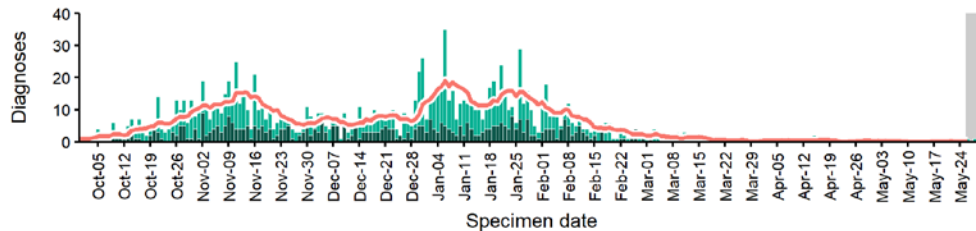
Data from SGSS. Produced by Outbreak Surveillance Team, PHE

# Lichfield case numbers, testing numbers and positivity, 1 Oct to 29 May 2021

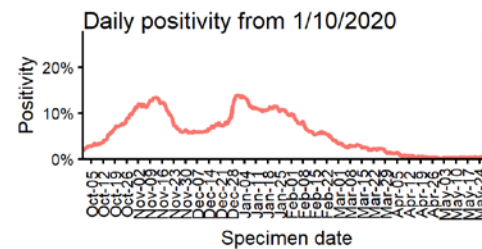
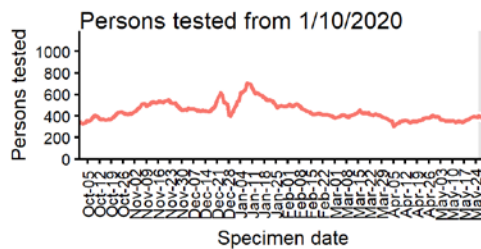
**LICHFIELD**  
Cases and persons tested up to May 29 2021



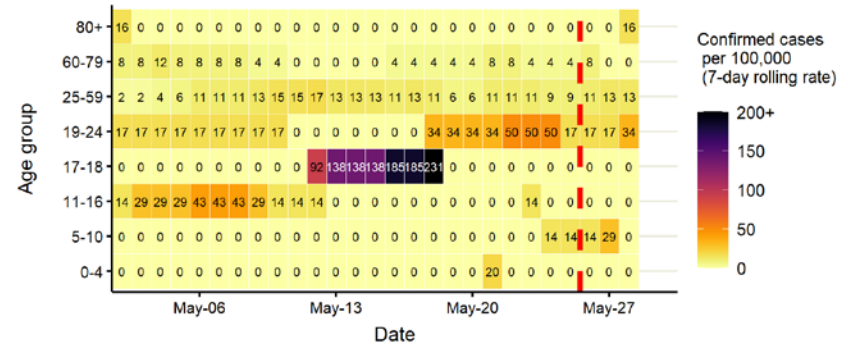
Daily cases from 1/10/2020: 60+ YEARS ONLY **NOTE: different y-axis scale**



4 days with incomplete data
  Pillar 1
  Pillar 2
  Total 7 day moving average (P1 + P2)



Age-stratified case rate heatmap for Lichfield: 2 May to 29 May 2021



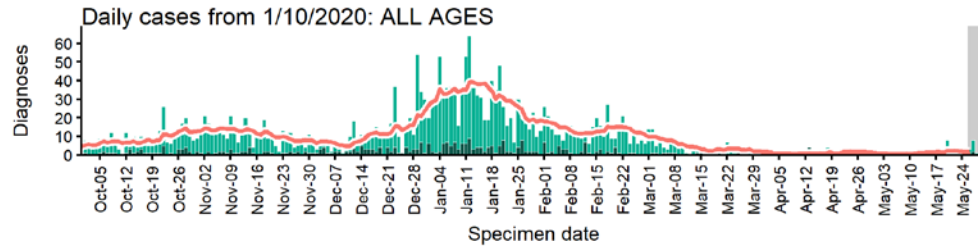
The red dashed line on the heatmaps show the last four days where data may be incomplete due to reporting delays and removal of LFDs with accompanying negative PCR results. Please consider this data provisional.

Data from SGSS. Produced by Outbreak Surveillance Team, PHE

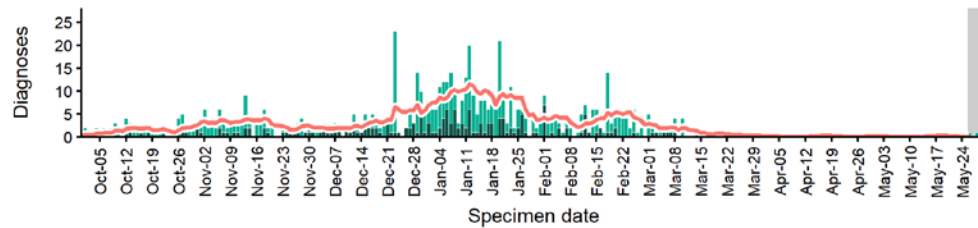


# Malvern Hills case numbers, testing numbers and positivity, 1 Oct to 29 May 2021

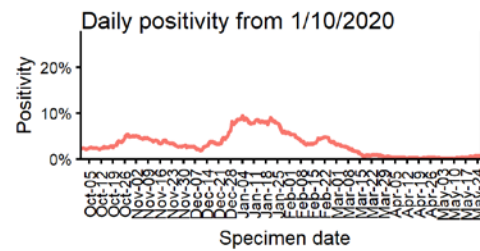
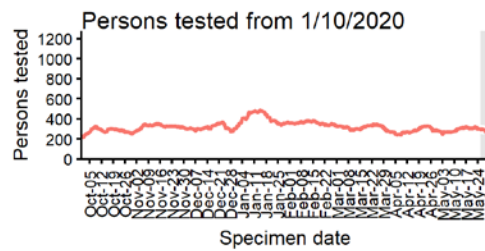
## MALVERN HILLS Cases and persons tested up to May 29 2021



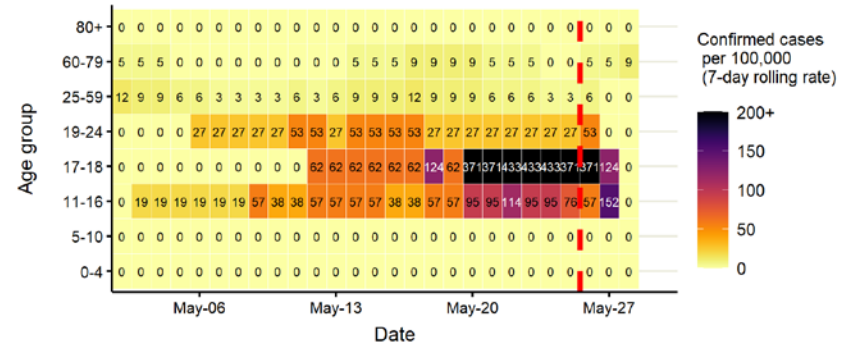
### Daily cases from 1/10/2020: 60+ YEARS ONLY **NOTE: different y-axis scale**



4 days with incomplete data
  Pillar 1
  Pillar 2
  Total 7 day moving average (P1 + P2)



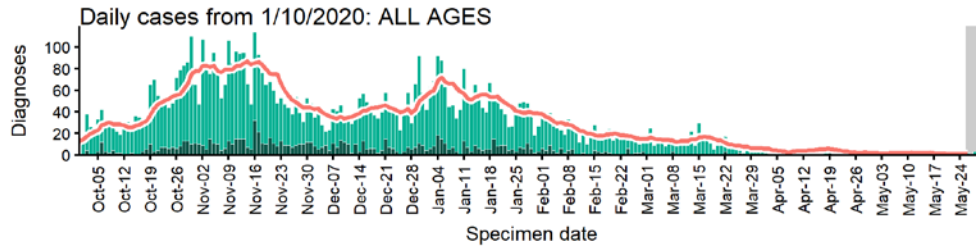
## Age-stratified case rate heatmap for Malvern Hills: 2 May to 29 May 2021



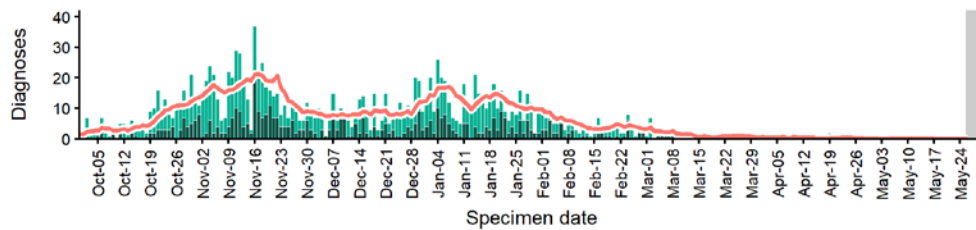
The red dashed line on the heatmaps show the last four days where data may be incomplete due to reporting delays and removal of LFDs with accompanying negative PCR results. Please consider this data provisional.

# Newcastle-under-Lyme case numbers, testing numbers and positivity, 1 Oct to 29 May 2021

**NEWCASTLE-UNDER-LYME**  
Cases and persons tested up to May 29 2021

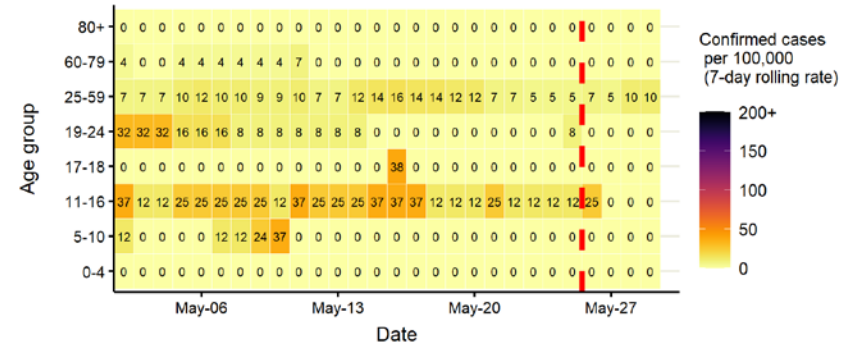


Daily cases from 1/10/2020: 60+ YEARS ONLY **NOTE: different y-axis scale**

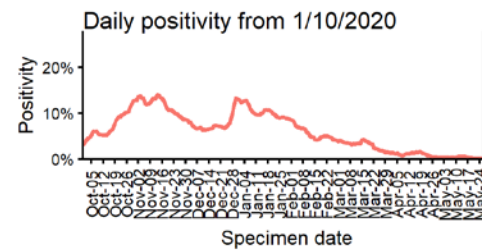
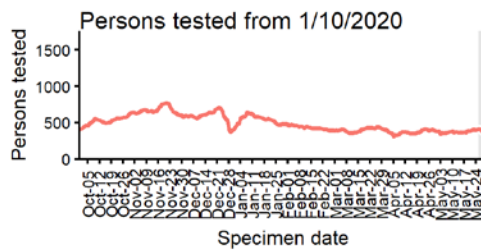


4 days with incomplete data Pillar 1 Pillar 2 Total 7 day moving average (P1 + P2)

Age-stratified case rate heatmap for Newcastle-under-Lyme: 2 May to 29 May 2021



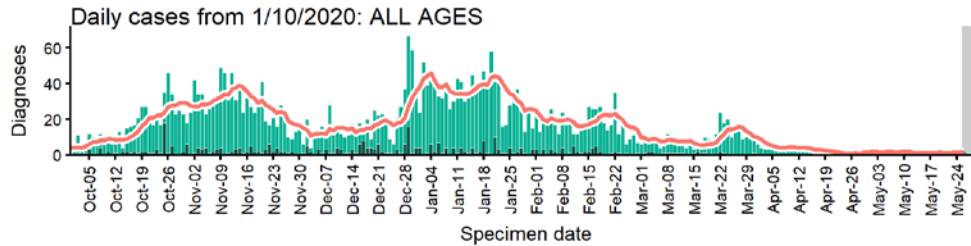
The red dashed line on the heatmaps show the last four days where data may be incomplete due to reporting delays and removal of LFDs with accompanying negative PCR results. Please consider this data provisional.



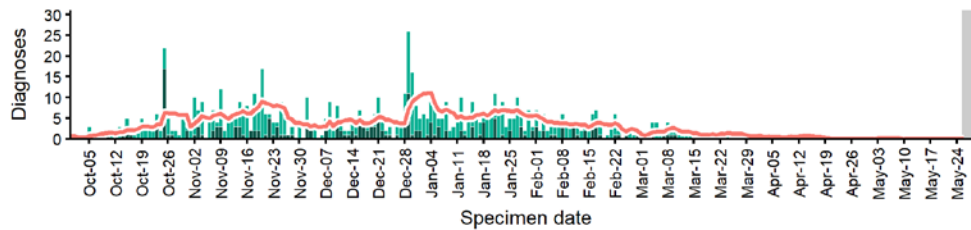
Data from SGSS. Produced by Outbreak Surveillance Team, PHE

# North Warwickshire case numbers, testing numbers and positivity, 1 Oct to 29 May 2021

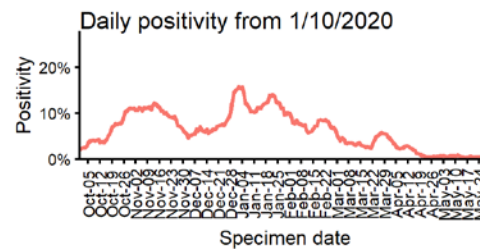
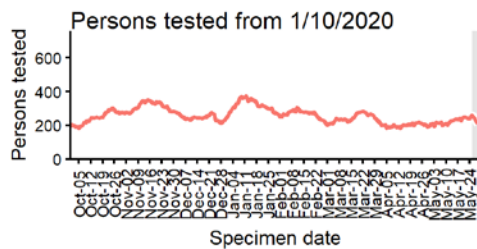
**NORTH WARWICKSHIRE**  
Cases and persons tested up to May 29 2021



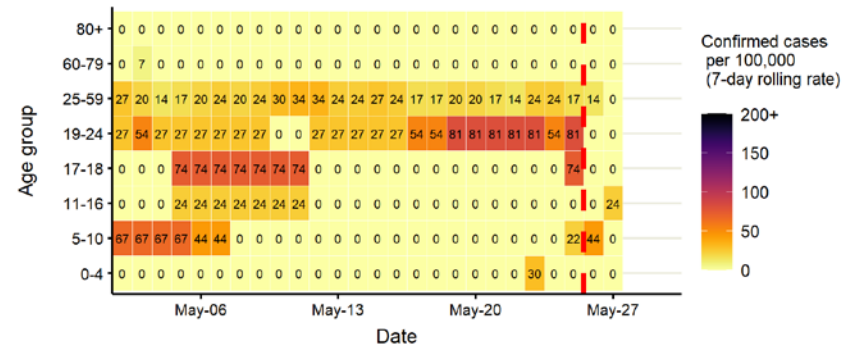
Daily cases from 1/10/2020: 60+ YEARS ONLY **NOTE: different y-axis scale**



4 days with incomplete data Pillar 1 Pillar 2 Total 7 day moving average (P1 + P2)



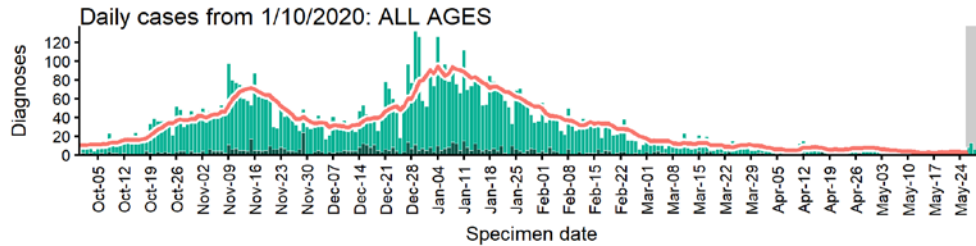
Age-stratified case rate heatmap for North Warwickshire: 2 May to 29 May 2021



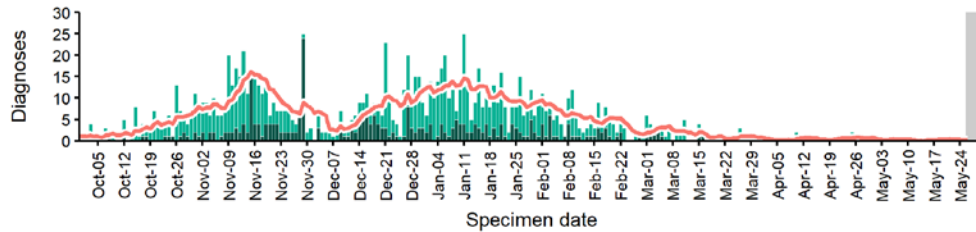
The red dashed line on the heatmaps show the last four days where data may be incomplete due to reporting delays and removal of LFDs with accompanying negative PCR results. Please consider this data provisional.

# Nuneaton and Bedworth case numbers, testing numbers and positivity, 1 Oct to 29 May 2021

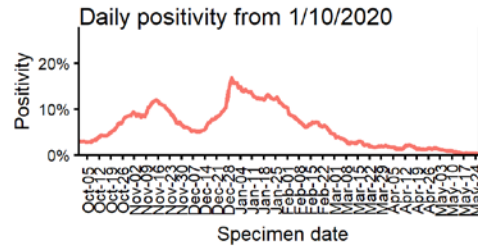
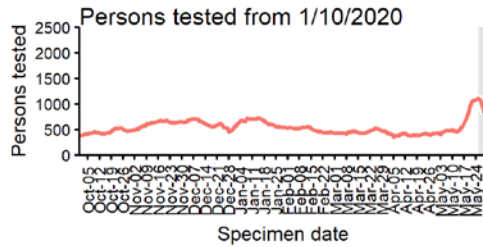
**NUNEATON AND BEDWORTH  
Cases and persons tested up to May 29 2021**



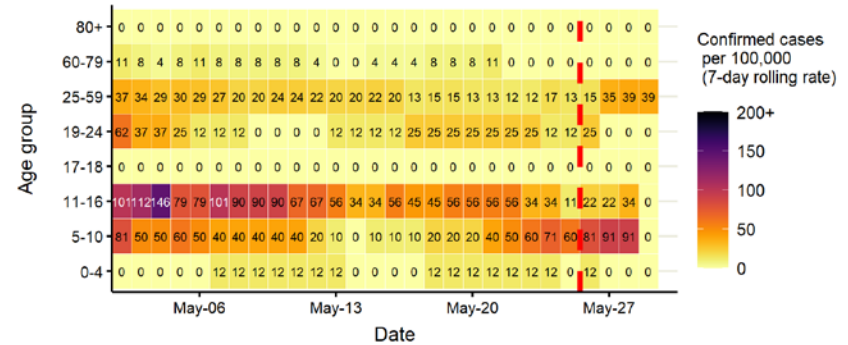
Daily cases from 1/10/2020: 60+ YEARS ONLY **NOTE: different y-axis scale**



4 days with incomplete data
  Pillar 1
  Pillar 2
  Total 7 day moving average (P1 + P2)



Age-stratified case rate heatmap for Nuneaton and Bedworth: 2 May to 29 May 2021

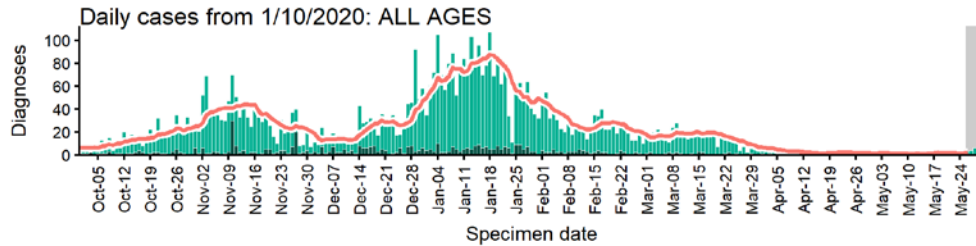


The red dashed line on the heatmaps show the last four days where data may be incomplete due to reporting delays and removal of LFDs with accompanying negative PCR results. Please consider this data provisional.

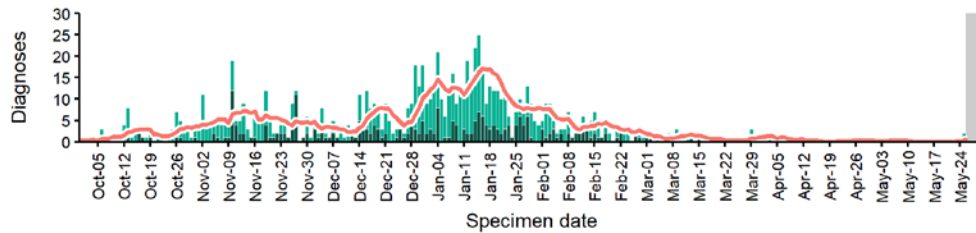
Data from SGSS. Produced by Outbreak Surveillance Team, PHE

# Redditch case numbers, testing numbers and positivity, 1 Oct to 29 May 2021

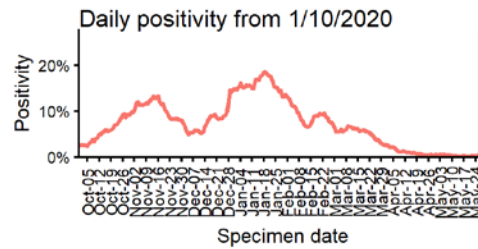
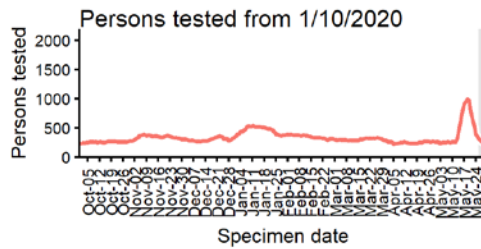
**REDDITCH**  
Cases and persons tested up to May 29 2021



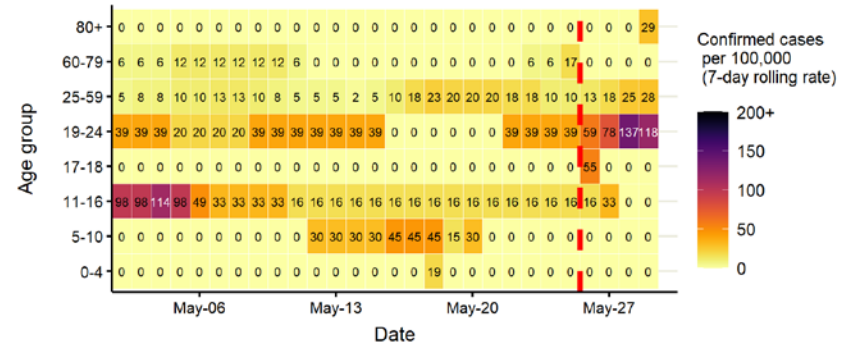
Daily cases from 1/10/2020: 60+ YEARS ONLY **NOTE: different y-axis scale**



4 days with incomplete data Pillar 1 Pillar 2 Total 7 day moving average (P1 + P2)



Age-stratified case rate heatmap for Redditch: 2 May to 29 May 2021

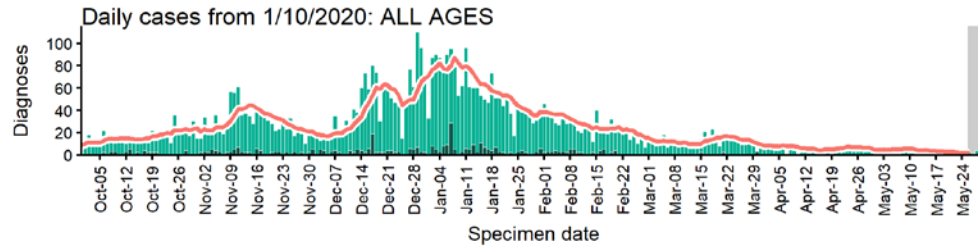


The red dashed line on the heatmaps show the last four days where data may be incomplete due to reporting delays and removal of LFDs with accompanying negative PCR results. Please consider this data provisional.

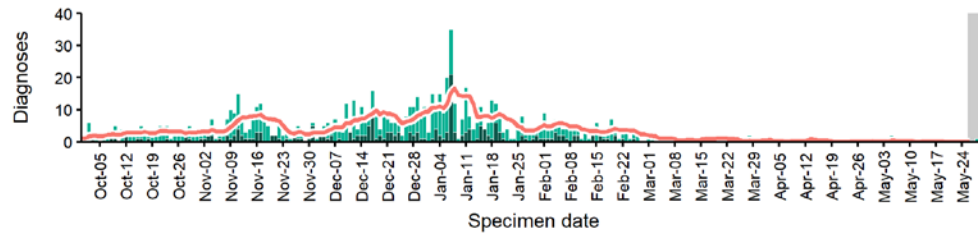
Data from SGSS. Produced by Outbreak Surveillance Team, PHE

# Rugby case numbers, testing numbers and positivity, 1 Oct to 29 May 2021

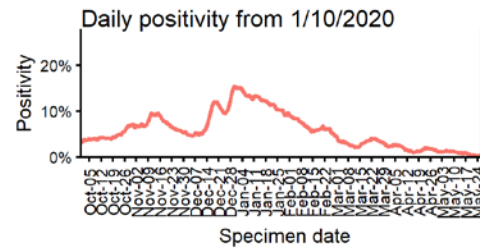
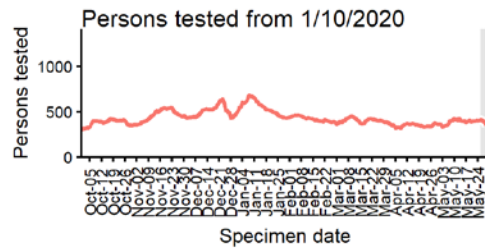
## RUGBY Cases and persons tested up to May 29 2021



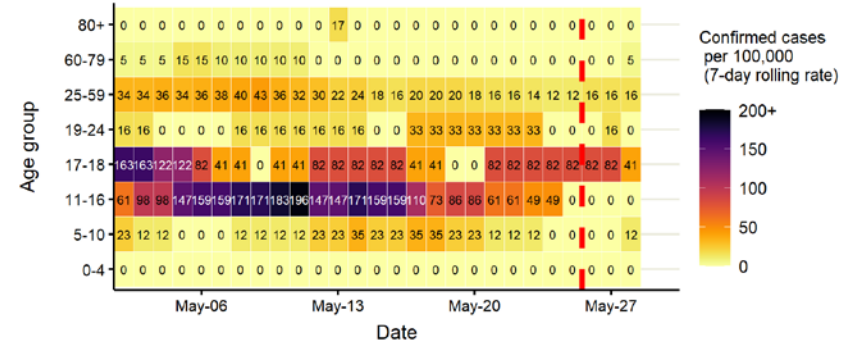
### Daily cases from 1/10/2020: 60+ YEARS ONLY **NOTE: different y-axis scale**



4 days with incomplete data Pillar 1 Pillar 2 Total 7 day moving average (P1 + P2)



## Age-stratified case rate heatmap for Rugby: 2 May to 29 May 2021

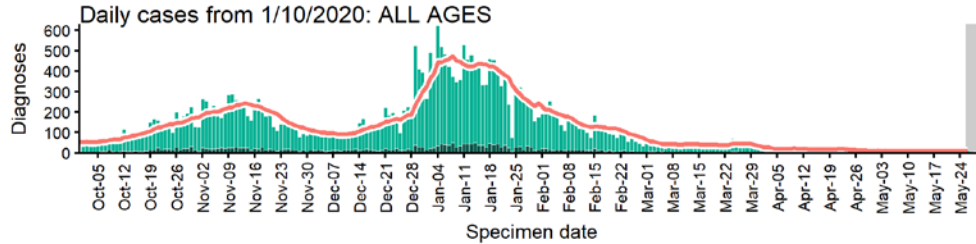


The red dashed line on the heatmaps show the last four days where data may be incomplete due to reporting delays and removal of LFDs with accompanying negative PCR results. Please consider this data provisional.

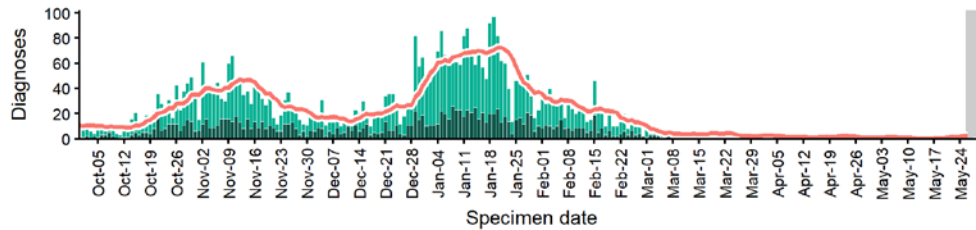
Data from SGSS. Produced by Outbreak Surveillance Team, PHE

# Sandwell case numbers, testing numbers and positivity, 1 Oct to 29 May 2021

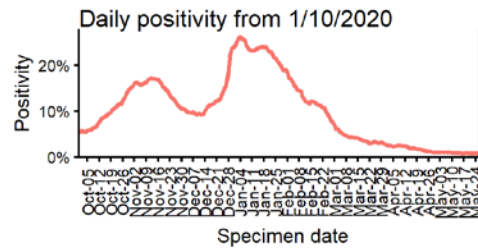
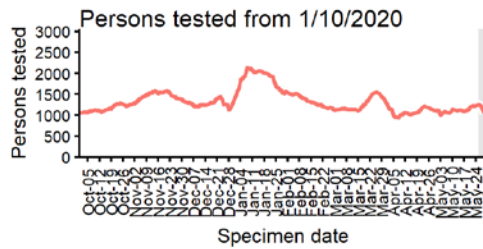
**SANDWELL**  
Cases and persons tested up to May 29 2021



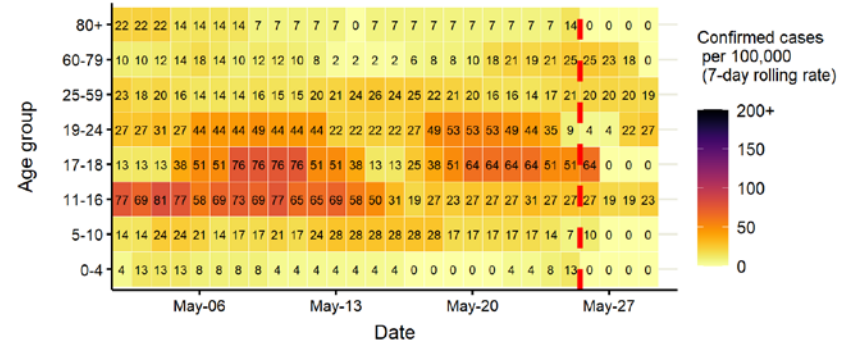
Daily cases from 1/10/2020: 60+ YEARS ONLY **NOTE: different y-axis scale**



4 days with incomplete data
  Pillar 1
  Pillar 2
  Total 7 day moving average (P1 + P2)



Age-stratified case rate heatmap for Sandwell: 2 May to 29 May 2021

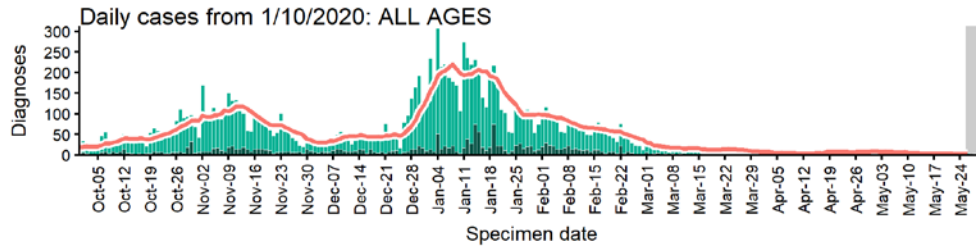


The red dashed line on the heatmaps show the last four days where data may be incomplete due to reporting delays and removal of LFDs with accompanying negative PCR results. Please consider this data provisional.

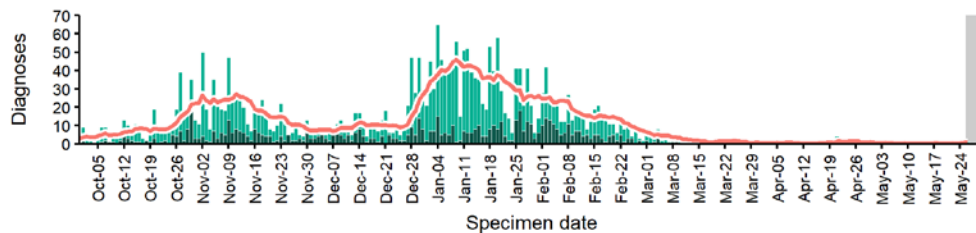
Data from SGSS. Produced by Outbreak Surveillance Team, PHE

# Shropshire case numbers, testing numbers and positivity, 1 Oct to 29 May 2021

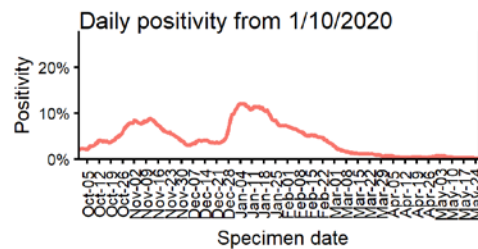
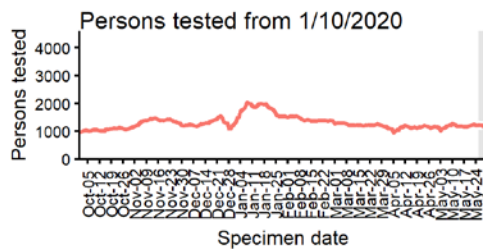
## SHROPSHIRE Cases and persons tested up to May 29 2021



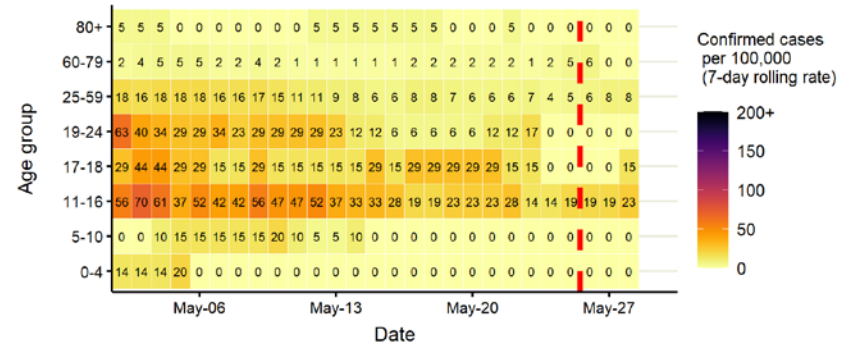
### Daily cases from 1/10/2020: 60+ YEARS ONLY **NOTE: different y-axis scale**



4 days with incomplete data
  Pillar 1
  Pillar 2
  Total 7 day moving average (P1 + P2)



## Age-stratified case rate heatmap for Shropshire: 2 May to 29 May 2021



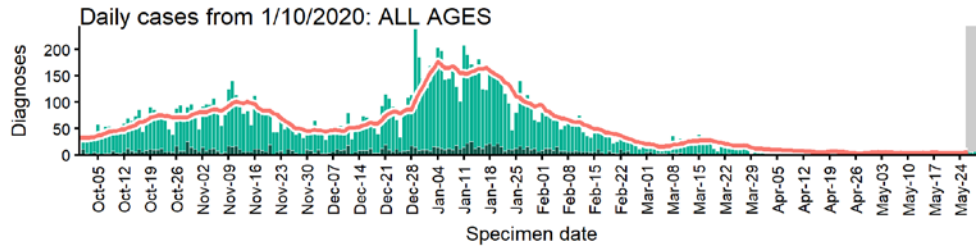
The red dashed line on the heatmaps show the last four days where data may be incomplete due to reporting delays and removal of LFDs with accompanying negative PCR results. Please consider this data provisional.

Data from SGSS. Produced by Outbreak Surveillance Team, PHE

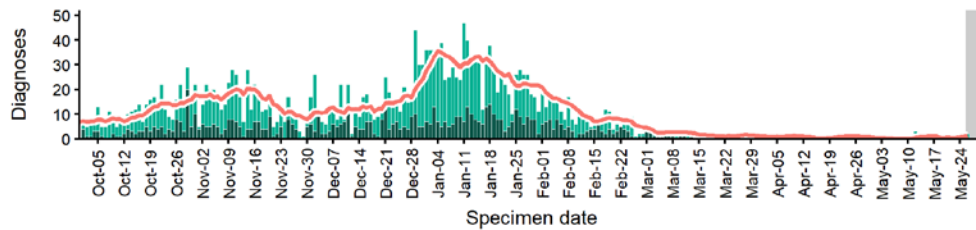


# Solihull case numbers, testing numbers and positivity, 1 Oct to 29 May 2021

**SOLIHULL**  
Cases and persons tested up to May 29 2021

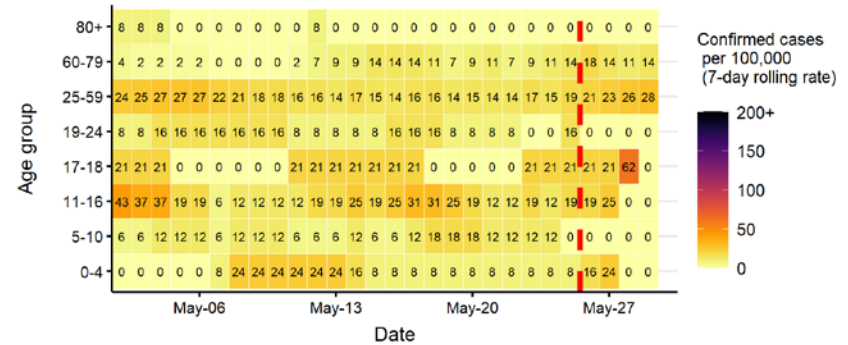


Daily cases from 1/10/2020: 60+ YEARS ONLY **NOTE: different y-axis scale**

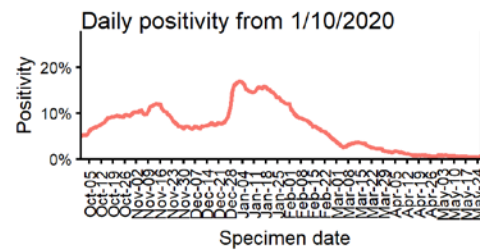
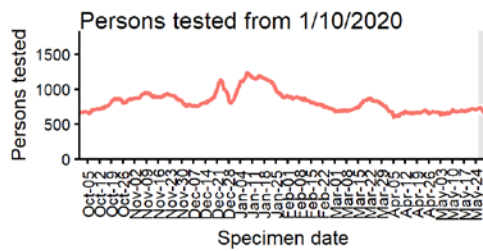


4 days with incomplete data Pillar 1 Pillar 2 Total 7 day moving average (P1 + P2)

Age-stratified case rate heatmap for Solihull: 2 May to 29 May 2021



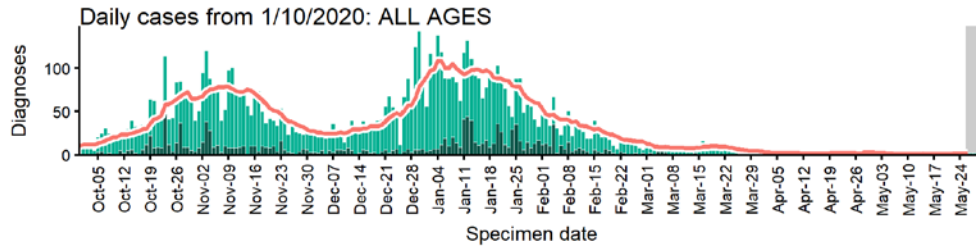
The red dashed line on the heatmaps show the last four days where data may be incomplete due to reporting delays and removal of LFDs with accompanying negative PCR results. Please consider this data provisional.



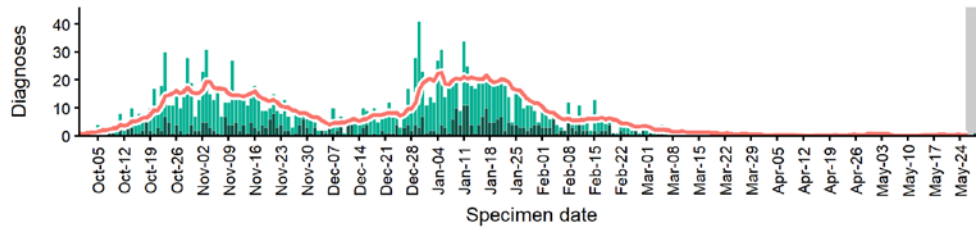
Data from SGSS. Produced by Outbreak Surveillance Team, PHE

# South Staffordshire case numbers, testing numbers and positivity, 1 Oct to 29 May 2021

**SOUTH STAFFORDSHIRE  
Cases and persons tested up to May 29 2021**

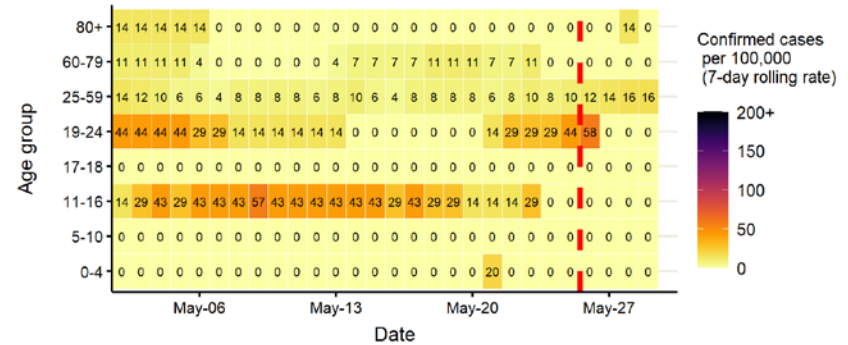


Daily cases from 1/10/2020: 60+ YEARS ONLY **NOTE: different y-axis scale**

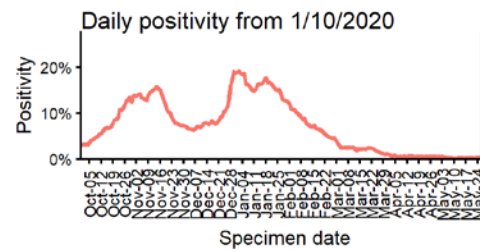
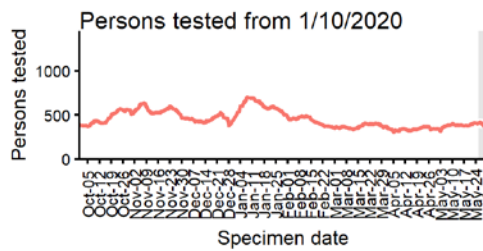


4 days with incomplete data Pillar 1 Pillar 2 Total 7 day moving average (P1 + P2)

Age-stratified case rate heatmap for South Staffordshire: 2 May to 29 May 2021



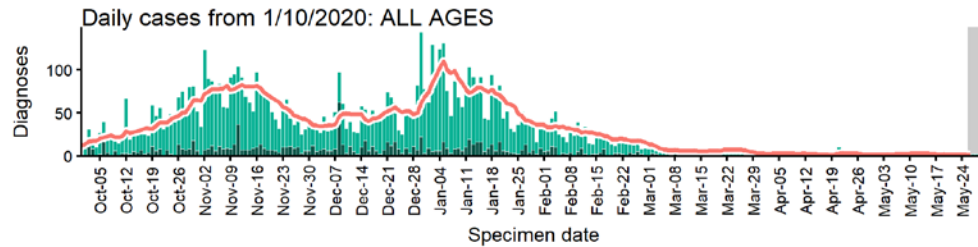
The red dashed line on the heatmaps show the last four days where data may be incomplete due to reporting delays and removal of LFDs with accompanying negative PCR results. Please consider this data provisional.



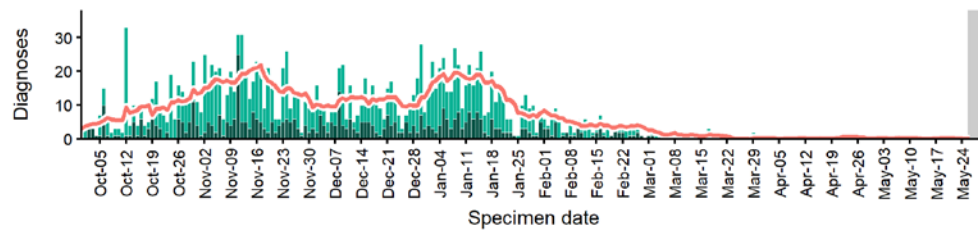
Data from SGSS. Produced by Outbreak Surveillance Team, PHE

# Stafford case numbers, testing numbers and positivity, 1 Oct to 29 May 2021

**STAFFORD**  
Cases and persons tested up to May 29 2021

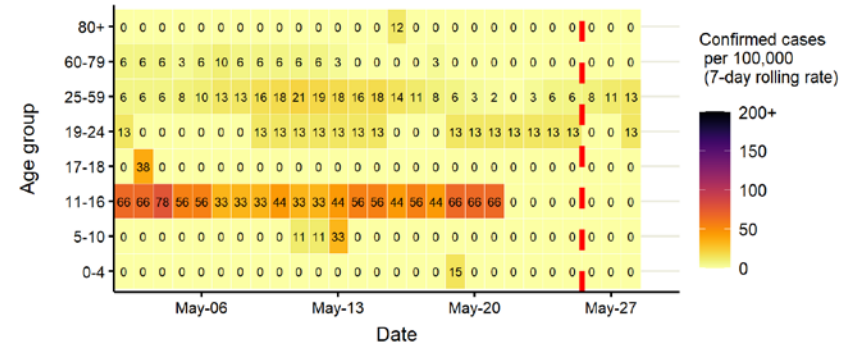


Daily cases from 1/10/2020: 60+ YEARS ONLY **NOTE: different y-axis scale**

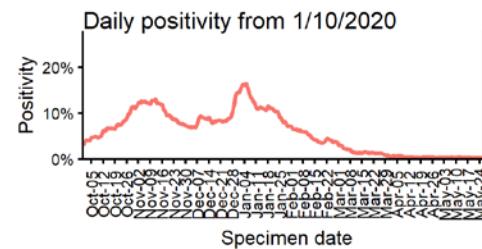
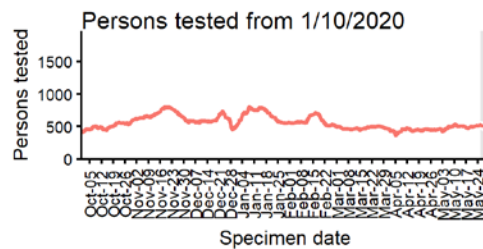


4 days with incomplete data Pillar 1 Pillar 2 Total 7 day moving average (P1 + P2)

Age-stratified case rate heatmap for Stafford: 2 May to 29 May 2021



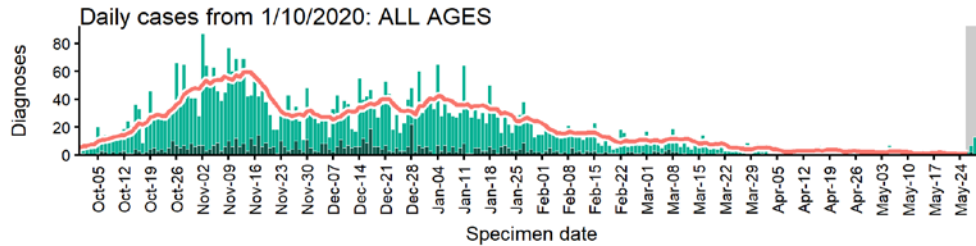
The red dashed line on the heatmaps show the last four days where data may be incomplete due to reporting delays and removal of LFDs with accompanying negative PCR results. Please consider this data provisional.



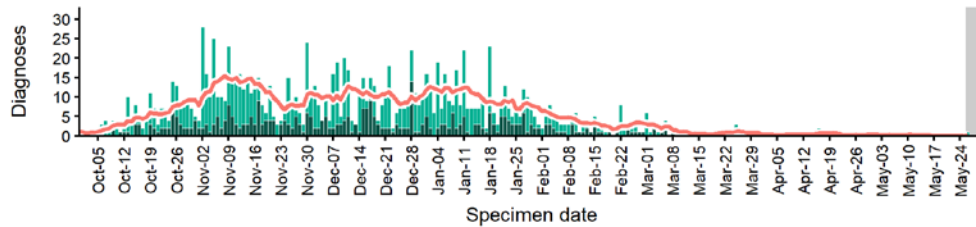
Data from SGSS. Produced by Outbreak Surveillance Team, PHE

# Staffordshire Moorlands case numbers, testing numbers and positivity, 1 Oct to 29 May 2021

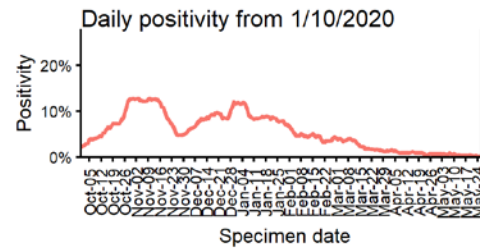
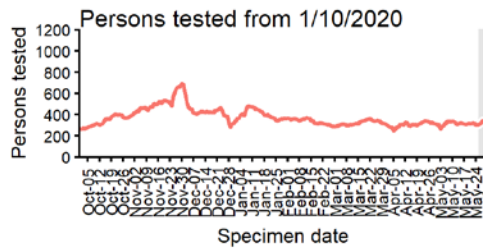
**STAFFORDSHIRE MOORLANDS**  
Cases and persons tested up to May 29 2021



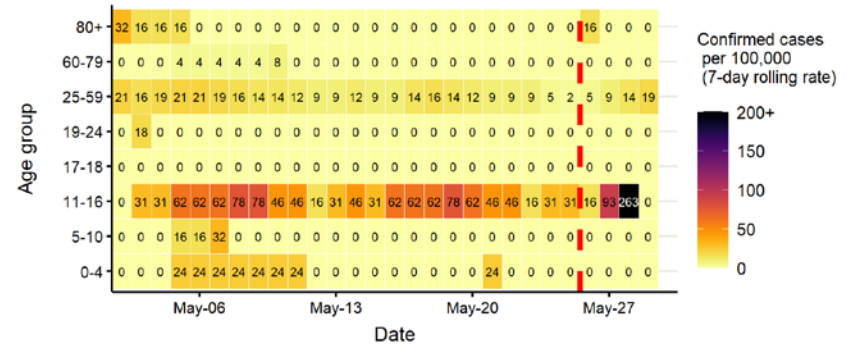
Daily cases from 1/10/2020: 60+ YEARS ONLY **NOTE: different y-axis scale**



4 days with incomplete data
  Pillar 1
  Pillar 2
  Total 7 day moving average (P1 + P2)



Age-stratified case rate heatmap for Staffordshire Moorlands: 2  
May to 29 May 2021

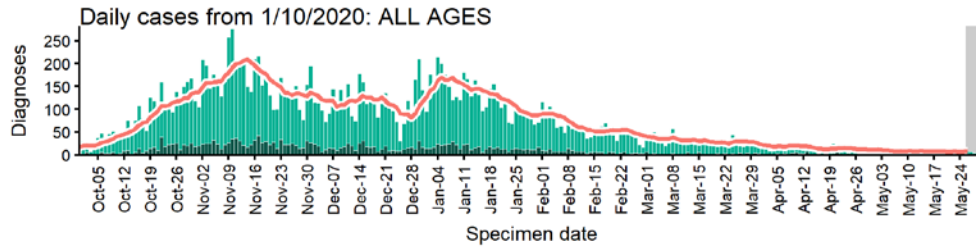


The red dashed line on the heatmaps show the last four days where data may be incomplete due to reporting delays and removal of LFDs with accompanying negative PCR results. Please consider this data provisional.

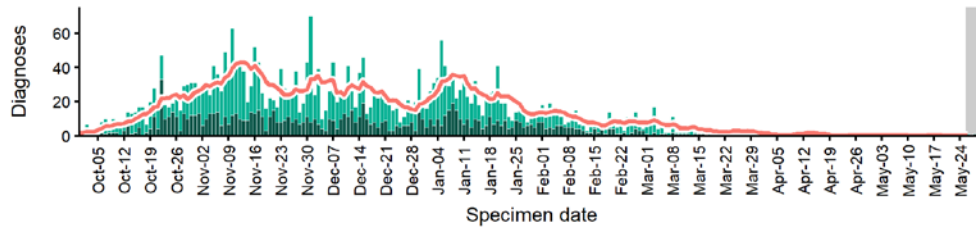
Data from SGSS. Produced by Outbreak Surveillance Team, PHE

# Stoke-on-Trent case numbers, testing numbers and positivity, 1 Oct to 29 May 2021

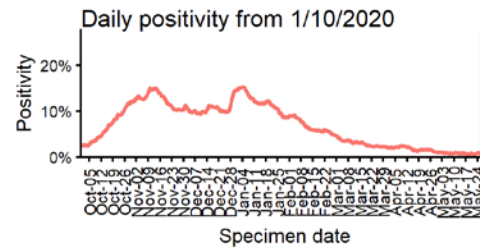
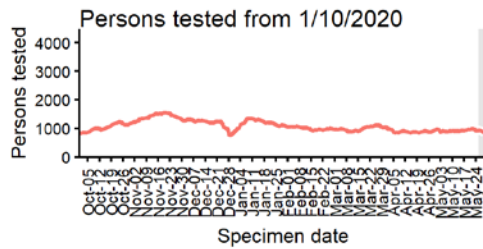
## STOKE-ON-TRENT Cases and persons tested up to May 29 2021



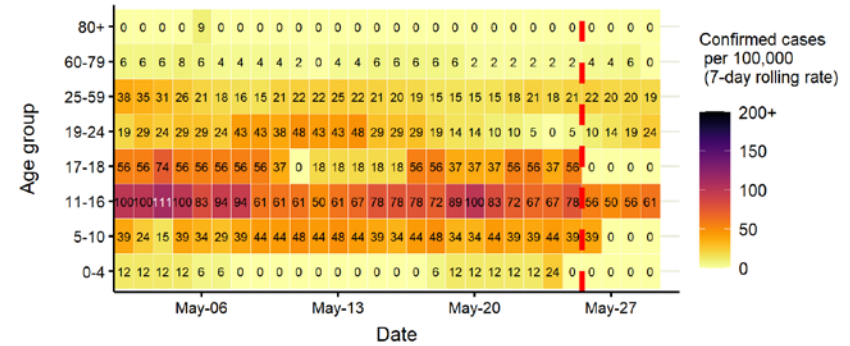
### Daily cases from 1/10/2020: 60+ YEARS ONLY **NOTE: different y-axis scale**



4 days with incomplete data
  Pillar 1
  Pillar 2
  Total 7 day moving average (P1 + P2)



## Age-stratified case rate heatmap for Stoke-on-Trent: 2 May to 29 May 2021

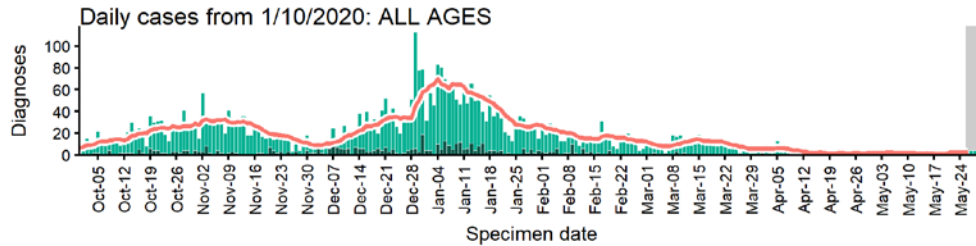


The red dashed line on the heatmaps show the last four days where data may be incomplete due to reporting delays and removal of LFDs with accompanying negative PCR results. Please consider this data provisional.

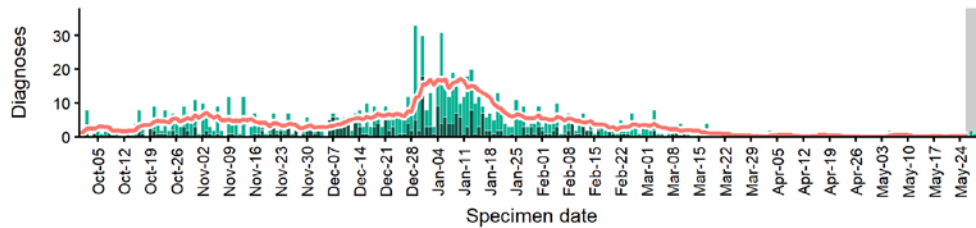
Data from SGSS. Produced by Outbreak Surveillance Team, PHE

# Stratford-on-Avon case numbers, testing numbers and positivity, 1 Oct to 29 May 2021

## STRATFORD-ON-AVON Cases and persons tested up to May 29 2021

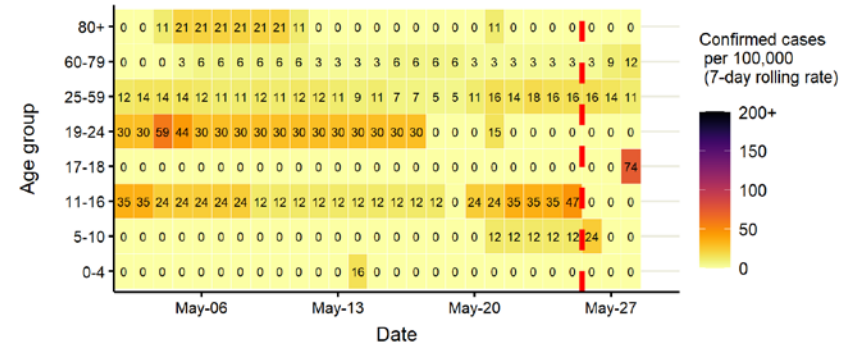


### Daily cases from 1/10/2020: 60+ YEARS ONLY **NOTE: different y-axis scale**

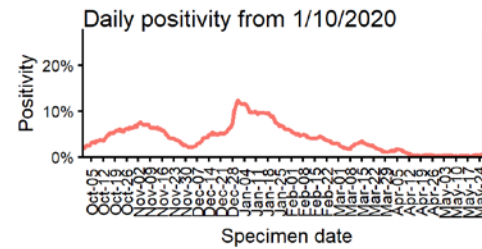
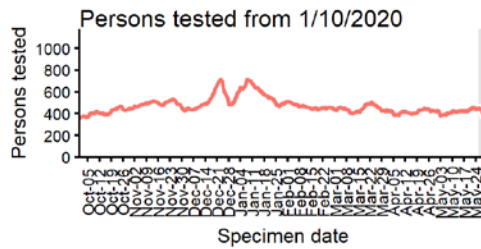


4 days with incomplete data Pillar 1 Pillar 2 Total 7 day moving average (P1 + P2)

## Age-stratified case rate heatmap for Stratford-on-Avon: 2 May to 29 May 2021



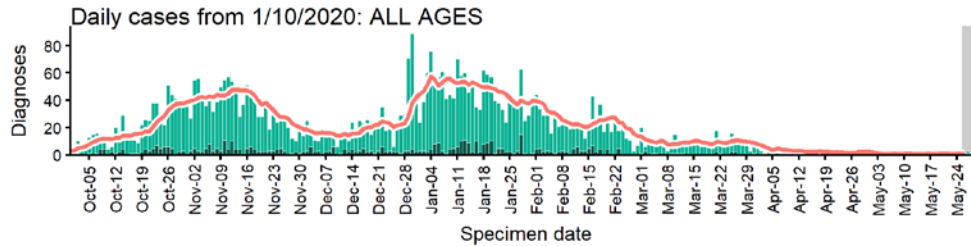
The red dashed line on the heatmaps show the last four days where data may be incomplete due to reporting delays and removal of LFDs with accompanying negative PCR results. Please consider this data provisional.



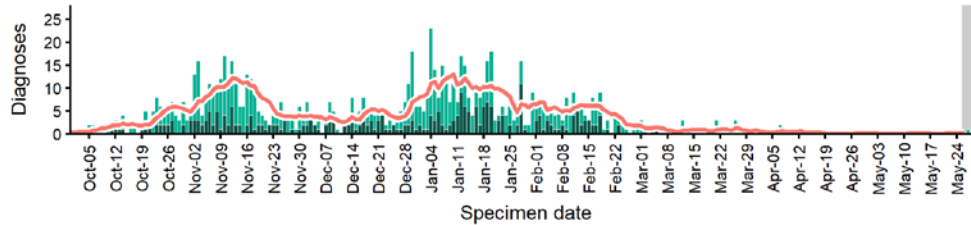
Data from SGSS. Produced by Outbreak Surveillance Team, PHE

# Tamworth case numbers, testing numbers and positivity, 1 Oct to 29 May 2021

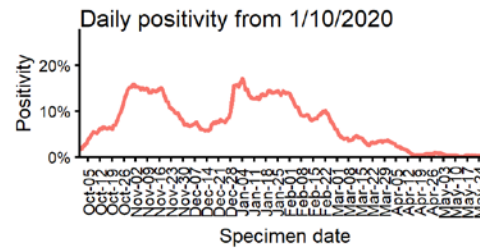
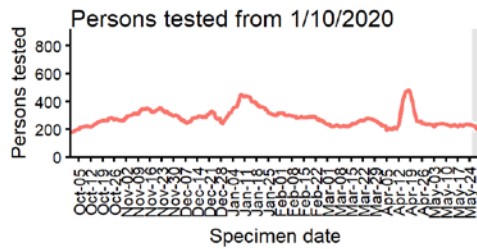
**TAMWORTH**  
Cases and persons tested up to May 29 2021



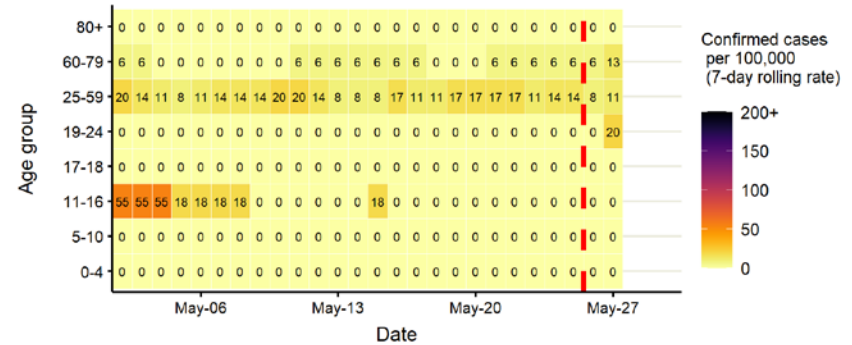
Daily cases from 1/10/2020: 60+ YEARS ONLY **NOTE: different y-axis scale**



4 days with incomplete data
  Pillar 1
  Pillar 2
  Total 7 day moving average (P1 + P2)



Age-stratified case rate heatmap for Tamworth: 2 May to 29 May 2021

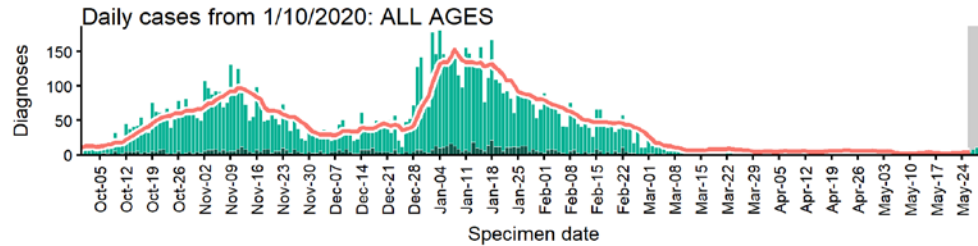


The red dashed line on the heatmaps show the last four days where data may be incomplete due to reporting delays and removal of LFDs with accompanying negative PCR results. Please consider this data provisional.

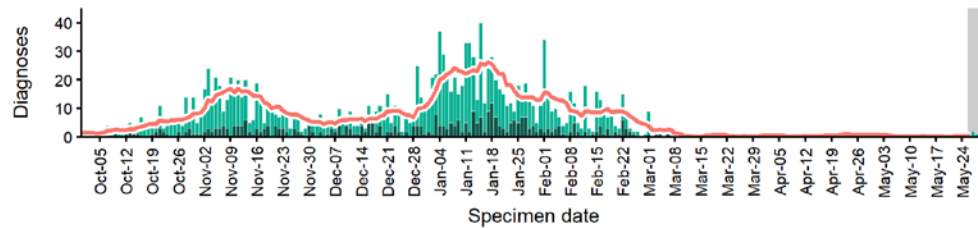
Data from SGSS. Produced by Outbreak Surveillance Team, PHE

# Telford and Wrekin case numbers, testing numbers and positivity, 1 Oct to 29 May 2021

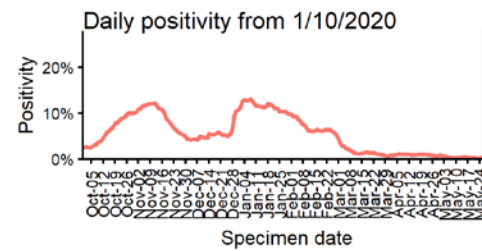
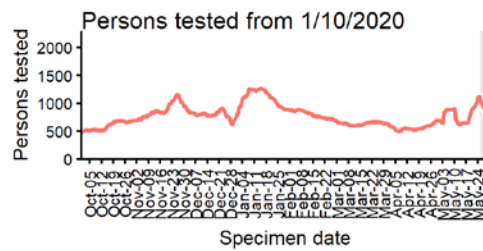
## TELFORD AND WREKIN Cases and persons tested up to May 29 2021



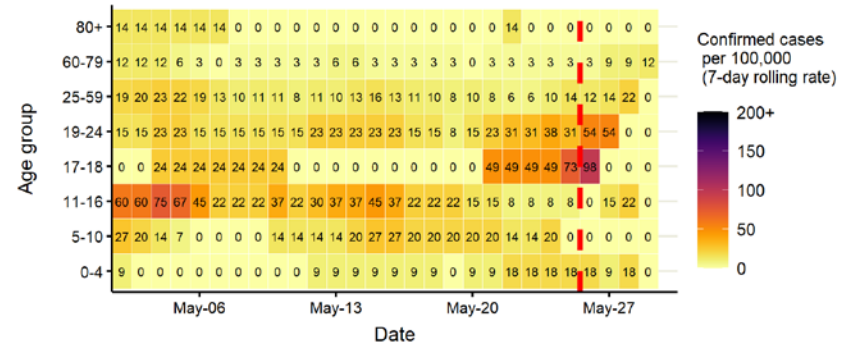
### Daily cases from 1/10/2020: 60+ YEARS ONLY **NOTE: different y-axis scale**



4 days with incomplete data
  Pillar 1
  Pillar 2
  Total 7 day moving average (P1 + P2)



## Age-stratified case rate heatmap for Telford and Wrekin: 2 May to 29 May 2021

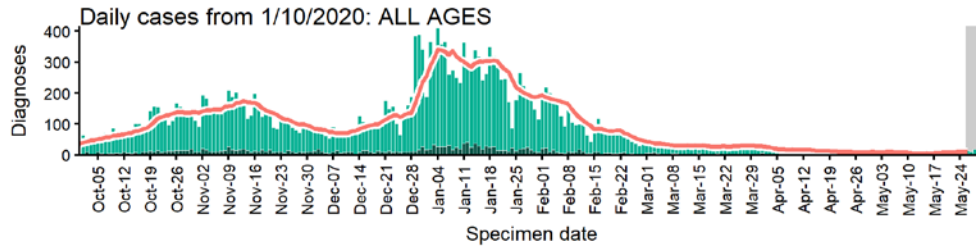


The red dashed line on the heatmaps show the last four days where data may be incomplete due to reporting delays and removal of LFDs with accompanying negative PCR results. Please consider this data provisional.

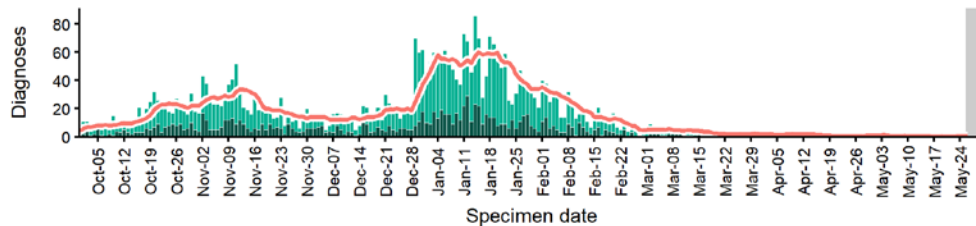


# Walsall case numbers, testing numbers and positivity, 1 Oct to 29 May 2021

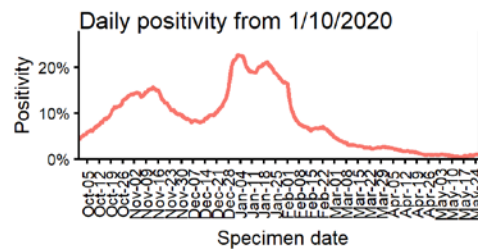
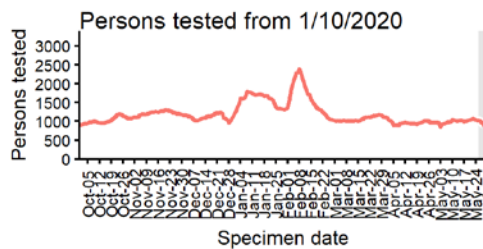
**WALSALL**  
Cases and persons tested up to May 29 2021



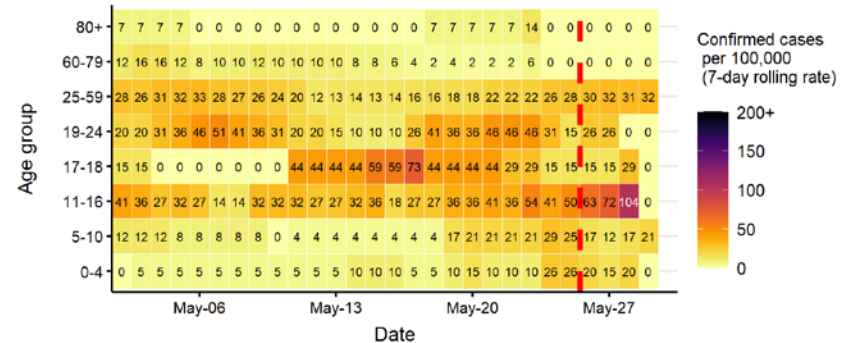
Daily cases from 1/10/2020: 60+ YEARS ONLY **NOTE: different y-axis scale**



4 days with incomplete data
  Pillar 1
  Pillar 2
  Total 7 day moving average (P1 + P2)



Age-stratified case rate heatmap for Walsall: 2 May to 29 May 2021

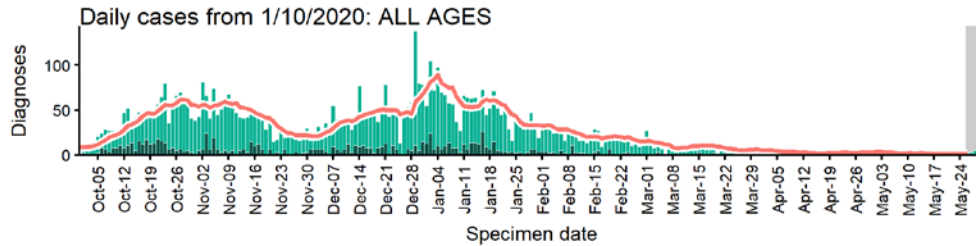


The red dashed line on the heatmaps show the last four days where data may be incomplete due to reporting delays and removal of LFDs with accompanying negative PCR results. Please consider this data provisional.

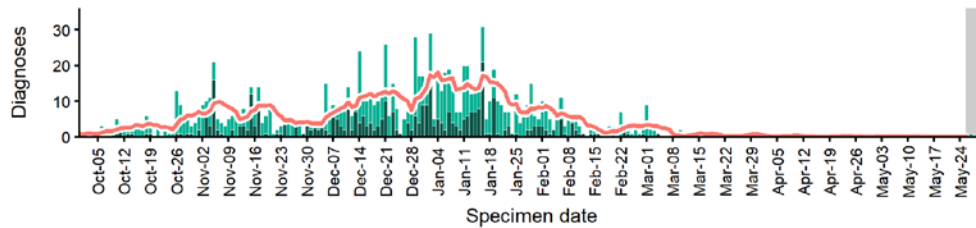
Data from SGSS. Produced by Outbreak Surveillance Team, PHE

# Warwick case numbers, testing numbers and positivity, 1 Oct to 29 May 2021

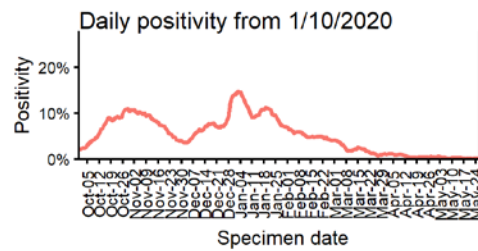
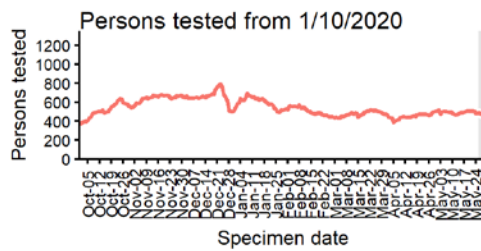
**WARWICK**  
Cases and persons tested up to May 29 2021



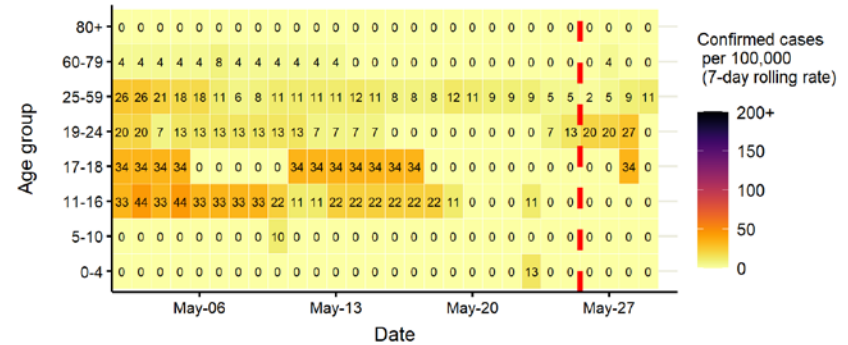
Daily cases from 1/10/2020: 60+ YEARS ONLY **NOTE: different y-axis scale**



4 days with incomplete data Pillar 1 Pillar 2 Total 7 day moving average (P1 + P2)



Age-stratified case rate heatmap for Warwick: 2 May to 29 May 2021

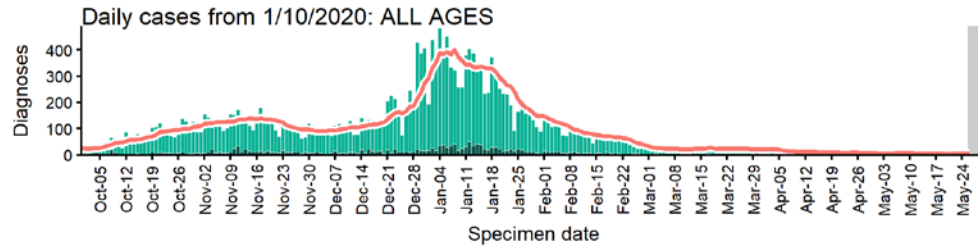


The red dashed line on the heatmaps show the last four days where data may be incomplete due to reporting delays and removal of LFDs with accompanying negative PCR results. Please consider this data provisional.

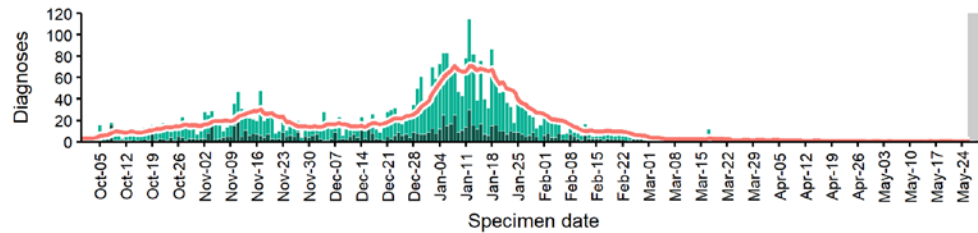
Data from SGSS. Produced by Outbreak Surveillance Team, PHE

# Wolverhampton case numbers, testing numbers and positivity, 1 Oct to 29 May 2021

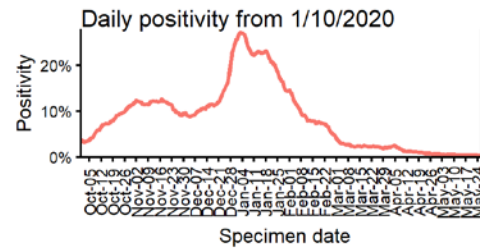
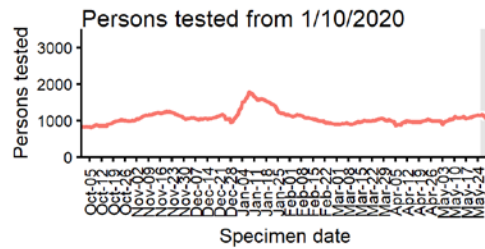
**WOLVERHAMPTON**  
Cases and persons tested up to May 29 2021



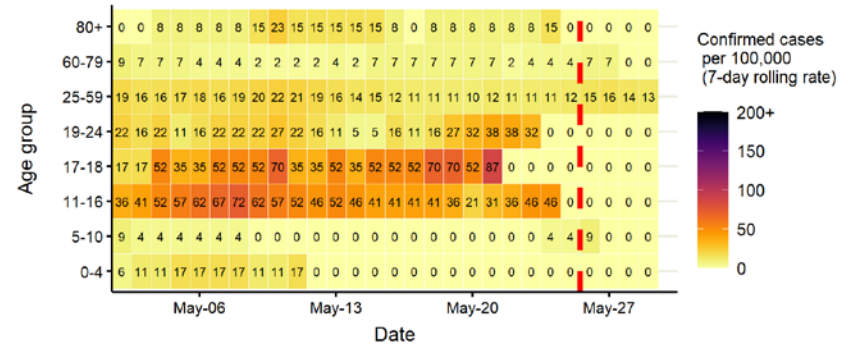
Daily cases from 1/10/2020: 60+ YEARS ONLY **NOTE: different y-axis scale**



4 days with incomplete data
  Pillar 1
  Pillar 2
  Total 7 day moving average (P1 + P2)



Age-stratified case rate heatmap for Wolverhampton: 2 May to 29 May 2021

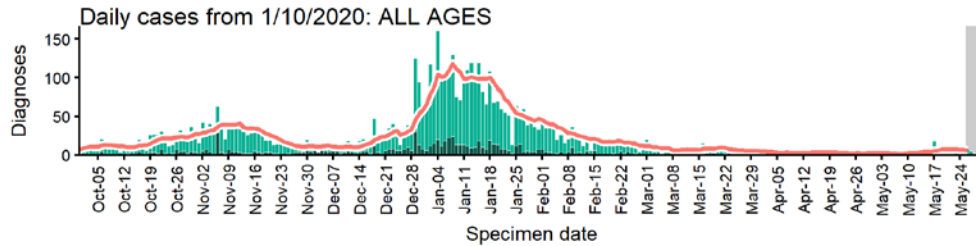


The red dashed line on the heatmaps show the last four days where data may be incomplete due to reporting delays and removal of LFDs with accompanying negative PCR results. Please consider this data provisional.

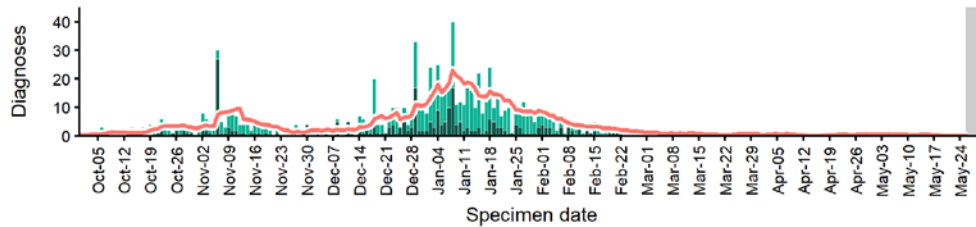
Data from SGSS. Produced by Outbreak Surveillance Team, PHE

# Worcester case numbers, testing numbers and positivity, 1 Oct to 29 May 2021

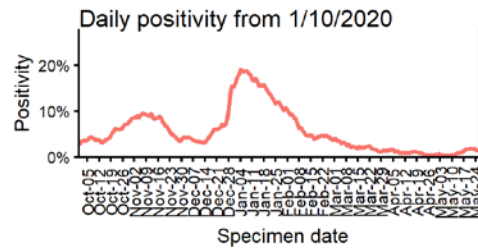
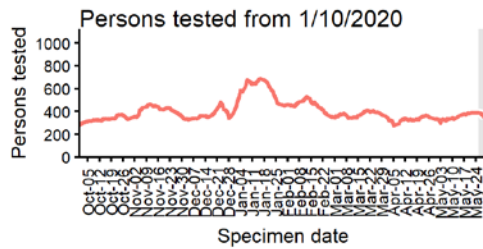
**WORCESTER**  
Cases and persons tested up to May 29 2021



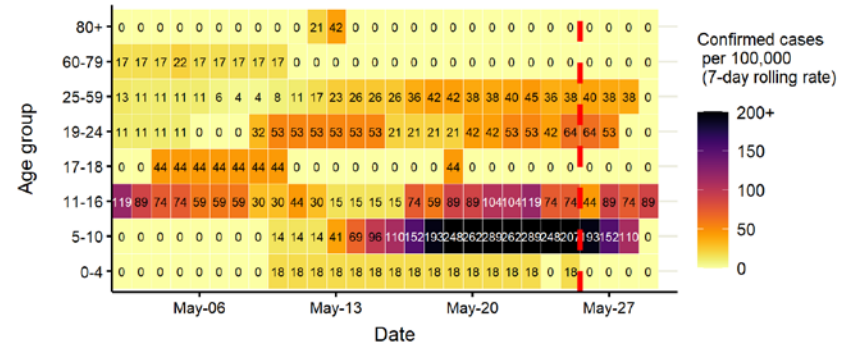
Daily cases from 1/10/2020: 60+ YEARS ONLY **NOTE: different y-axis scale**



4 days with incomplete data Pillar 1 Pillar 2 Total 7 day moving average (P1 + P2)



Age-stratified case rate heatmap for Worcester: 2 May to 29 May 2021

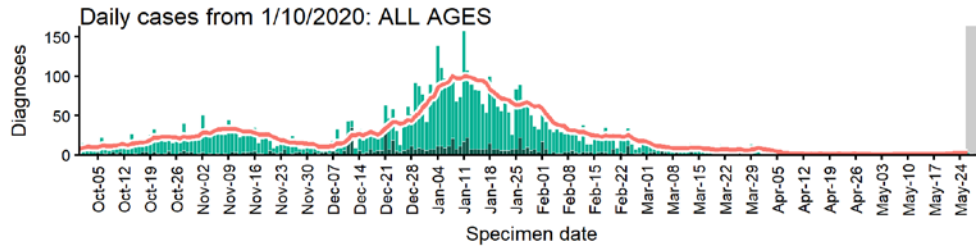


The red dashed line on the heatmaps show the last four days where data may be incomplete due to reporting delays and removal of LFDs with accompanying negative PCR results. Please consider this data provisional.

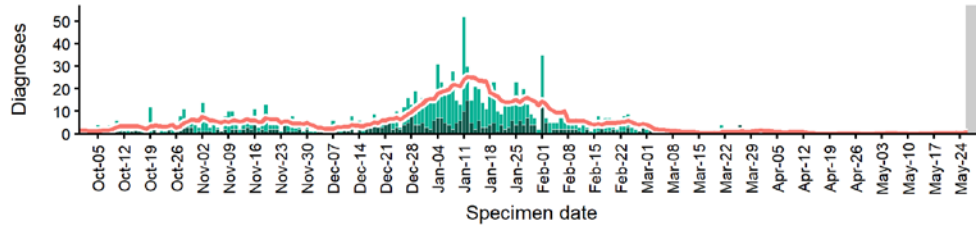
Data from SGSS. Produced by Outbreak Surveillance Team, PHE

# Wychavon case numbers, testing numbers and positivity, 1 Oct to 29 May 2021

**WYCHAVON**  
Cases and persons tested up to May 29 2021

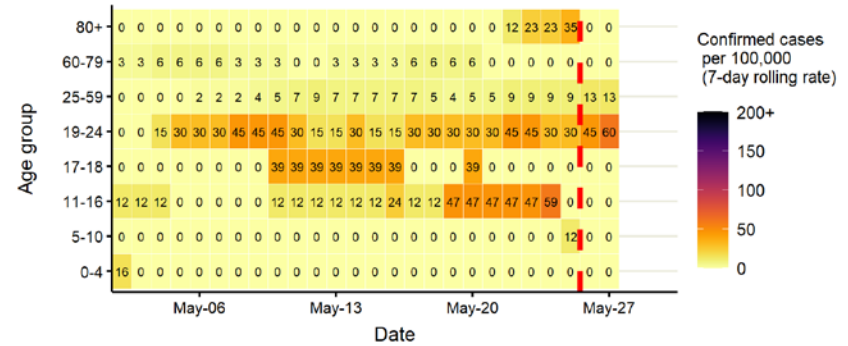


Daily cases from 1/10/2020: 60+ YEARS ONLY **NOTE: different y-axis scale**

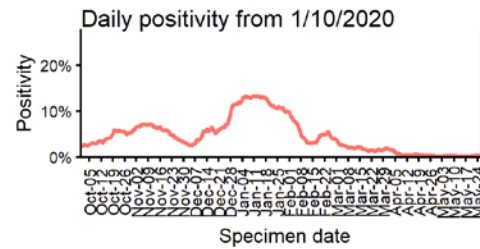
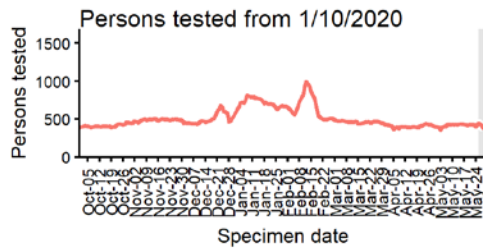


4 days with incomplete data Pillar 1 Pillar 2 Total 7 day moving average (P1 + P2)

Age-stratified case rate heatmap for Wychavon: 2 May to 29 May 2021



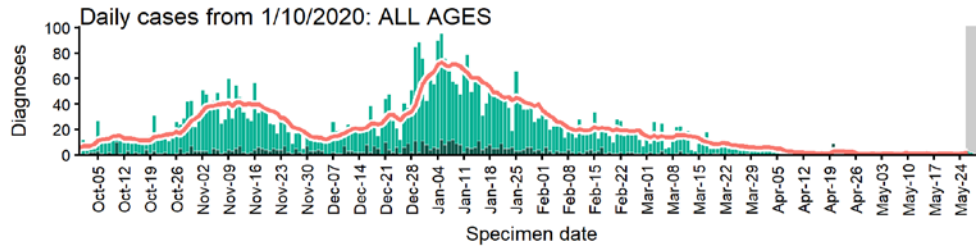
The red dashed line on the heatmaps show the last four days where data may be incomplete due to reporting delays and removal of LFDs with accompanying negative PCR results. Please consider this data provisional.



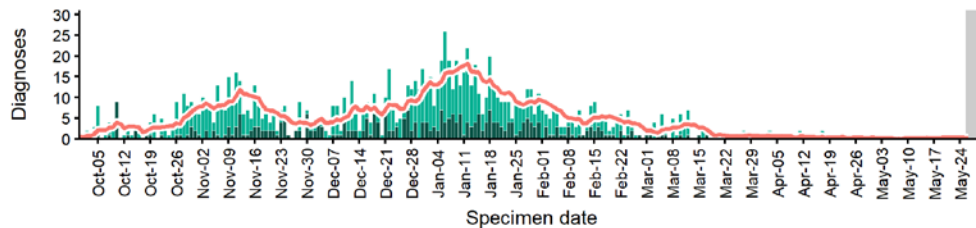
Data from SGSS. Produced by Outbreak Surveillance Team, PHE

# Wyre Forest case numbers, testing numbers and positivity, 1 Oct to 29 May 2021

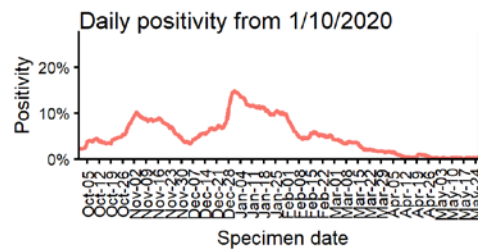
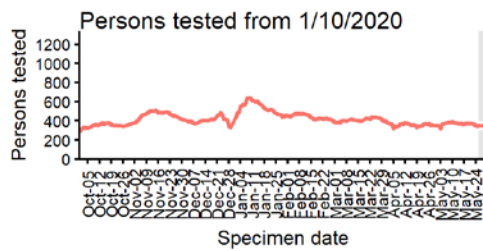
## WYRE FOREST Cases and persons tested up to May 29 2021



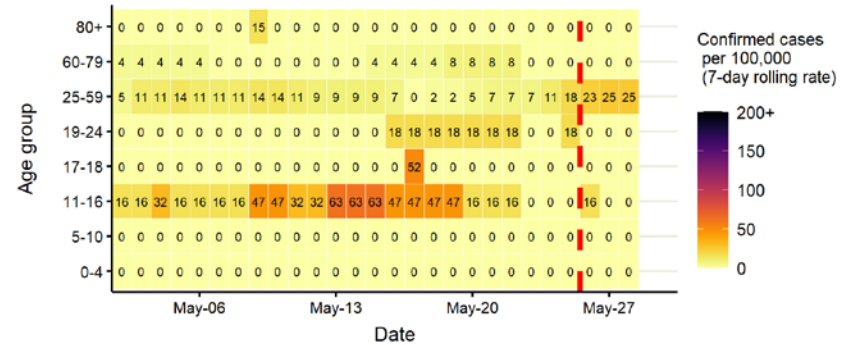
### Daily cases from 1/10/2020: 60+ YEARS ONLY **NOTE: different y-axis scale**



4 days with incomplete data
  Pillar 1
  Pillar 2
  Total 7 day moving average (P1 + P2)



## Age-stratified case rate heatmap for Wyre Forest: 2 May to 29 May 2021



The red dashed line on the heatmaps show the last four days where data may be incomplete due to reporting delays and removal of LFDs with accompanying negative PCR results. Please consider this data provisional.

Data from SGSS. Produced by Outbreak Surveillance Team, PHE

© Crown copyright 2020

[www.gov.uk/dhsc](http://www.gov.uk/dhsc)

This publication is licensed under the terms of the Open Government Licence v3.0 except where otherwise stated. To view this licence, visit [nationalarchives.gov.uk/doc/open-government-licence/version/3](http://nationalarchives.gov.uk/doc/open-government-licence/version/3)

Where we have identified any third party copyright information you will need to obtain permission from the copyright holders concerned.

**OGL**