



Department
of Health &
Social Care

London lower tier local authority watchlist, epidemiological charts

Produced 30 May 2021

Notes

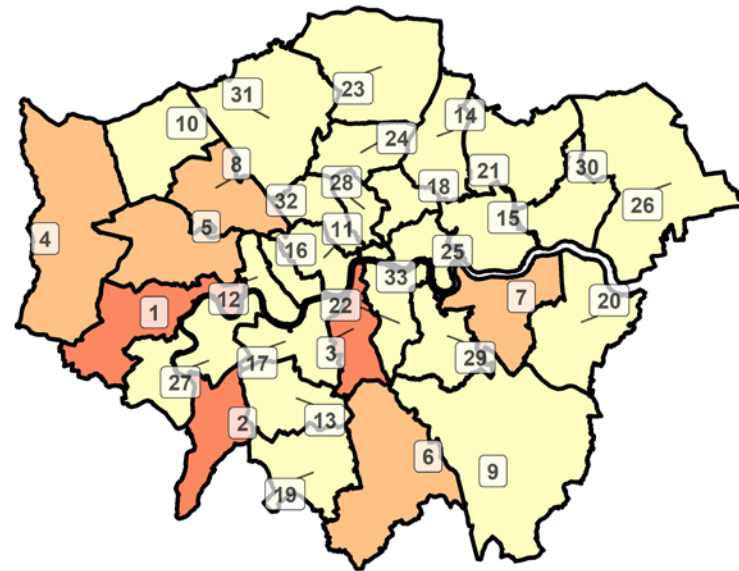
- This data is provided by Public Health England for the purpose of monitoring and supporting the management of Covid-19 infections in local authorities.
- The reports are produced using 2019 Office for National Statistics population data.
- If you would like to know the weekly trend for the case rate charts and persons tested chart please see lower tier local authority watchlist.

Weekly case rate per 100,000 population by local authority from 19 May to 25 May 2021

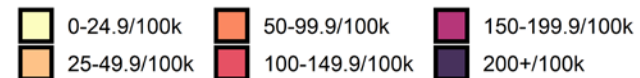
Rank	Local Authority	Case Rate (per 100,000)	Number of cases (1 week)
1	Hounslow	58.2	158
2	Kingston upon Thames	54.6	97
3	Lambeth	53.1	173
4	Hillingdon	48.6	149
5	Ealing	43.9	150
6	Croydon	39.6	153
7	Greenwich	29.2	84
8	Brent	25.8	85
9	Bromley	24.4	81
10	Harrow	23.1	58
11	Westminster	23.0	60
12	Hammersmith and Fulham	22.1	41
13	Merton	21.8	45
14	Waltham Forest	20.2	56
15	Newham	20.1	71
16	Kensington and Chelsea	17.9	28

Rank	Local Authority	Case Rate (per 100,000)	Number of cases (1 week)
17	Wandsworth	17.9	59
18	Hackney	17.1	48
19	Sutton	17.0	35
20	Bexley	16.9	42
21	Redbridge	16.1	49
22	Southwark	16.0	51
23	Enfield	15.3	51
24	Haringey	15.3	41
25	Tower Hamlets	14.8	48
26	Havering	14.6	38
27	Richmond upon Thames	14.6	29
28	Islington	13.2	32
29	Lewisham	12.8	39
30	Barking and Dagenham	12.2	26
31	Barnet	10.4	41
32	Camden	7.4	20
33	City of London	0.0	0

London
COVID-19 cases: 19 May to 25 May 2021
 Weekly case rates per 100,000 population by local authority



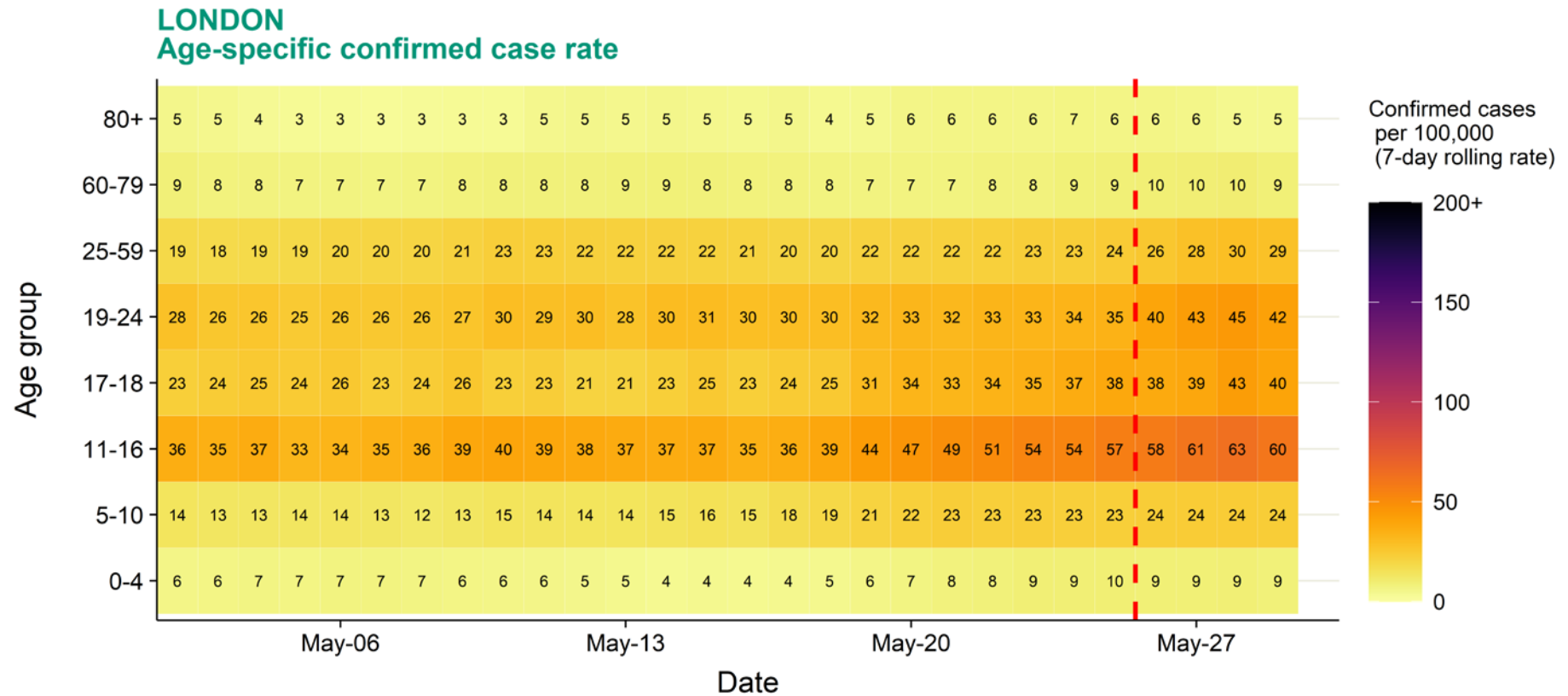
Covid-19 rate by local authority



Data from SGSS; Pillar 1 and 2 testing. Figure by Outbreak Surveillance Team, Public Health England.

Contains National Statistics data including 2019 population estimates Â© Crown copyright and database right 2020

London age-stratified heatmap of weekly case rate, 2 May to 25 May 2021



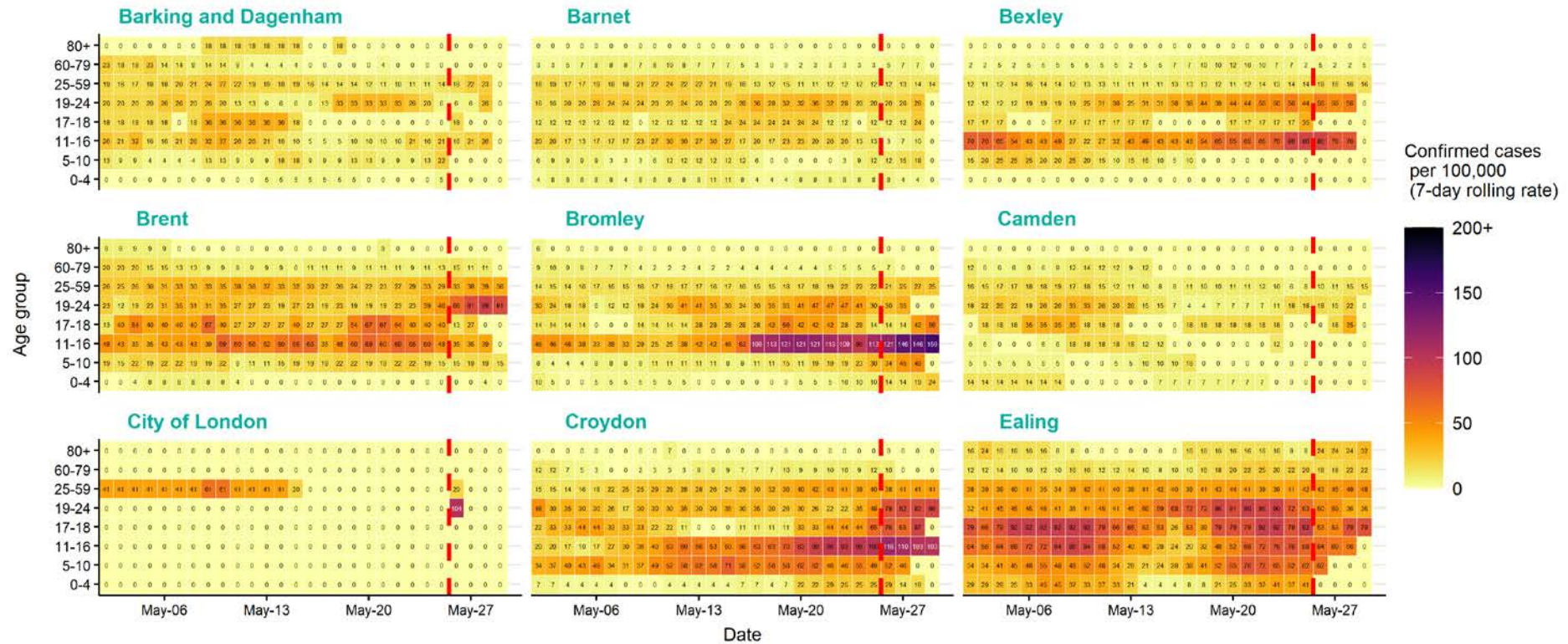
Source: Case data from SGSS. Produced by Outbreak Surveillance Team, PHE

The red dashed line on the heatmaps show the last four days where data may be incomplete due to reporting delays and removal of LFDs with accompanying negative PCR results.

Please consider this data provisional.

London age-stratified heatmap of weekly case rate by local authority, 2 May to 25 May 2021

LONDON LOCAL AUTHORITIES Age-specific confirmed case rate



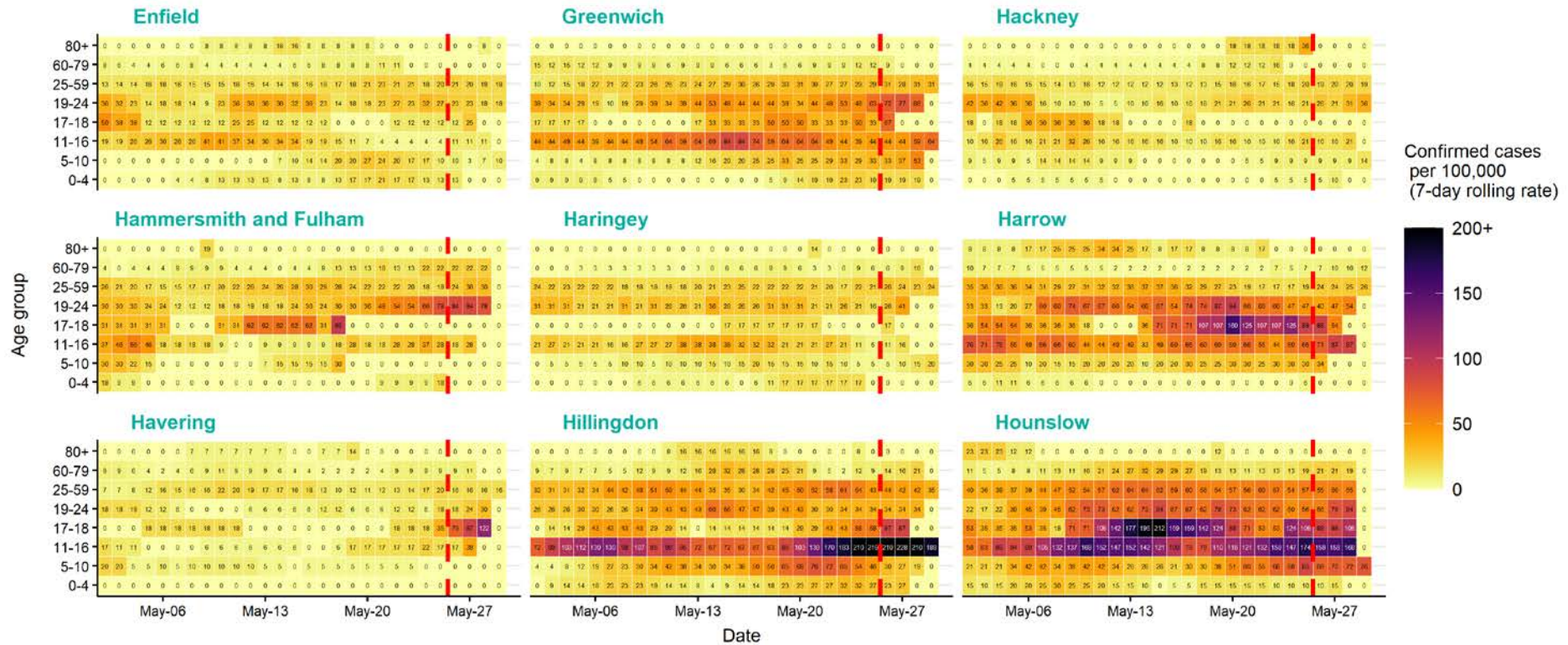
Source: Case data from SGSS. Produced by Outbreak Surveillance Team, PHE

The red dashed line on the heatmaps show the last four days where data may be incomplete due to reporting delays and removal of LFDs with accompanying negative PCR results.

Please consider this data provisional.

London age-stratified heatmap of weekly case rate by local authority, 2 May to 25 May 2021

LONDON LOCAL AUTHORITIES Age-specific confirmed case rate



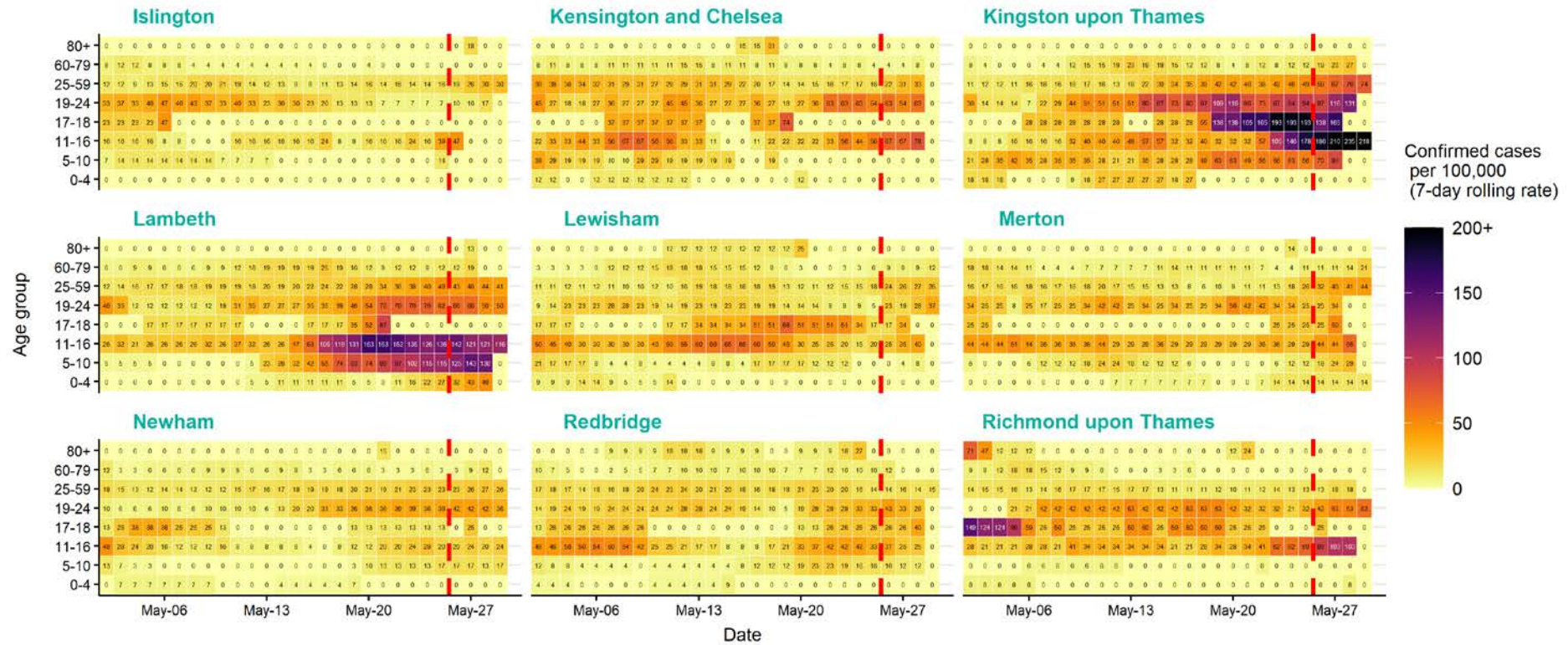
Source: Case data from SGSS. Produced by Outbreak Surveillance Team, PHE

The red dashed line on the heatmaps show the last four days where data may be incomplete due to reporting delays and removal of LFDs with accompanying negative PCR results.

Please consider this data provisional.

London age-stratified heatmap of weekly case rate by local authority, 2 May to 25 May 2021

LONDON LOCAL AUTHORITIES Age-specific confirmed case rate



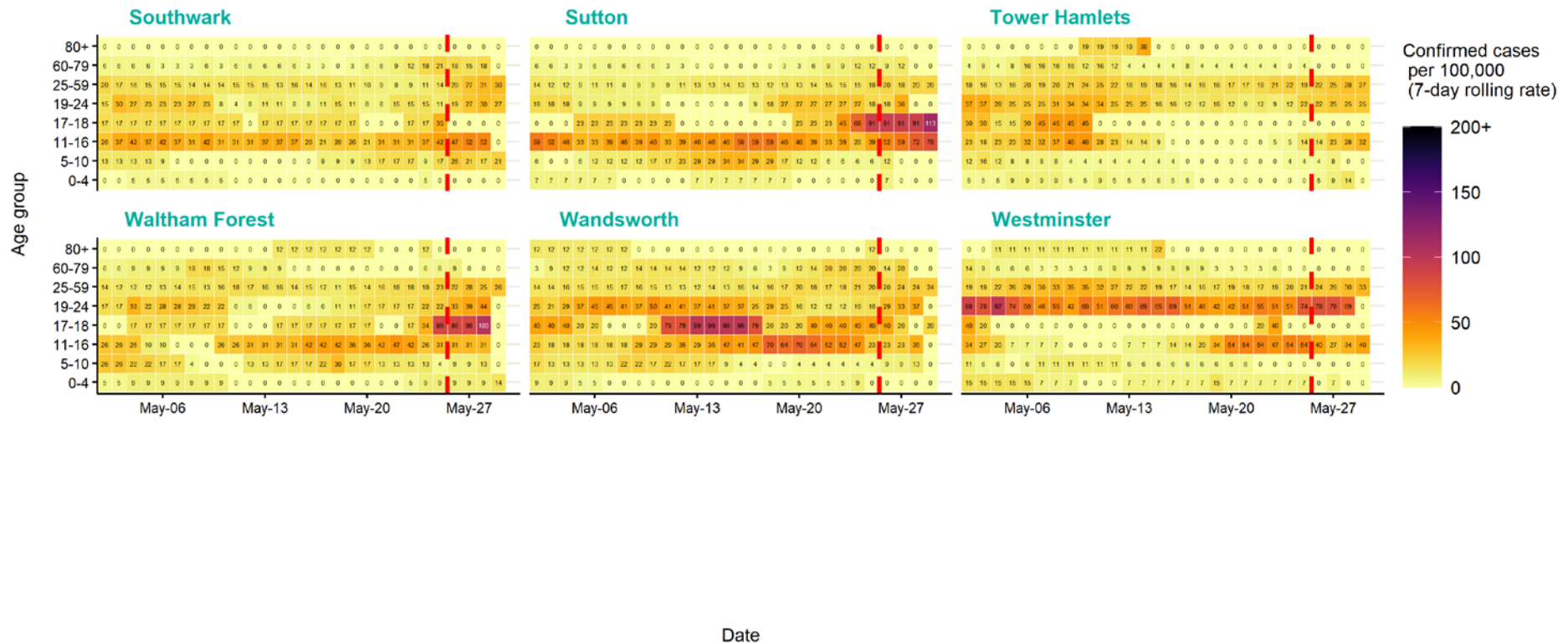
Source: Case data from SGSS. Produced by Outbreak Surveillance Team, PHE

The red dashed line on the heatmaps show the last four days where data may be incomplete due to reporting delays and removal of LFDs with accompanying negative PCR results.

Please consider this data provisional.

London age-stratified heatmap of weekly case rate by local authority, 2 May to 25 May 2021

LONDON LOCAL AUTHORITIES Age-specific confirmed case rate



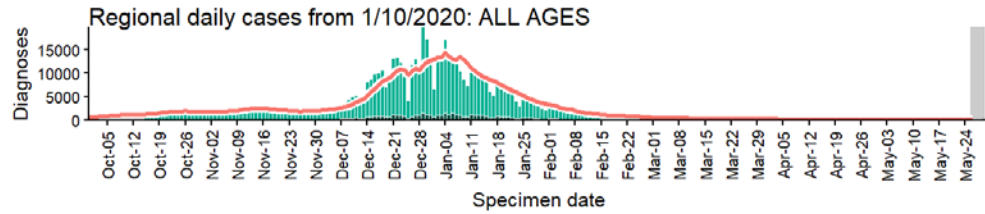
Source: Case data from SGSS. Produced by Outbreak Surveillance Team, PHE

The red dashed line on the heatmaps show the last four days where data may be incomplete due to reporting delays and removal of LFDs with accompanying negative PCR results.

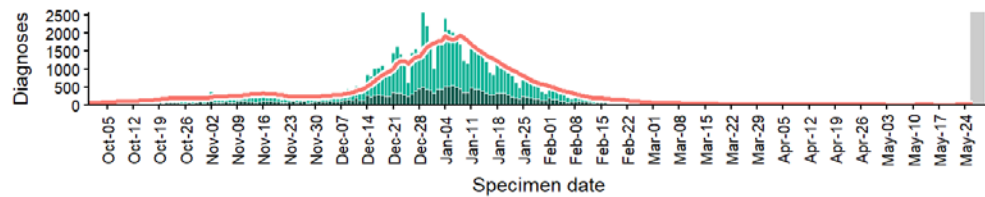
Please consider this data provisional.

London regional case numbers, testing numbers and positivity, 1 Oct to 29 May 2021

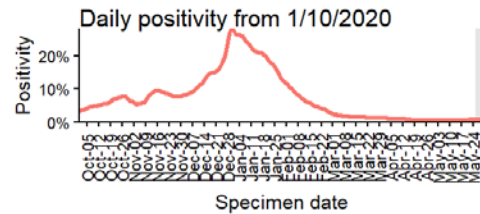
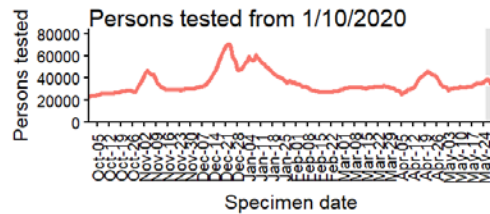
LONDON Cases and persons tested up to May 29 2021



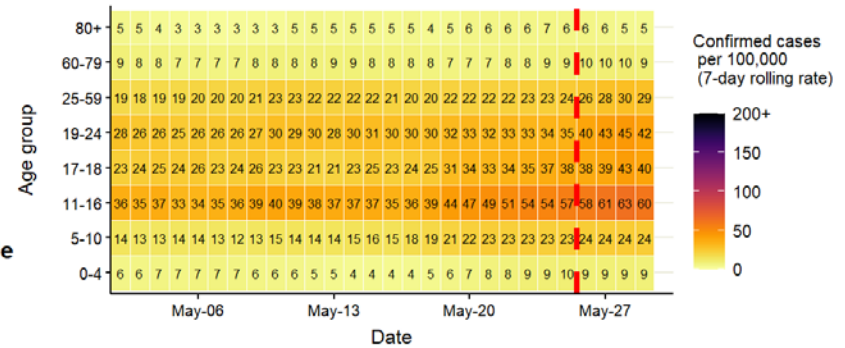
Regional daily cases from 1/10/2020: 60+ YEARS ONLY NOTE: different y-axis scale



4 days with incomplete data Pillar 1 Pillar 2 Total 7 day moving average (P1 + P2)



Regional age-stratified case rate heatmap for London: 2 May to 29 May 2021,



The red dotted line denotes the last four days, subject to reporting delays

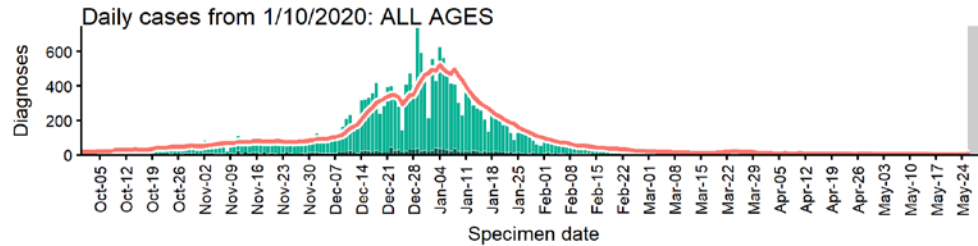
Data from SGSS. Produced by Outbreak Surveillance Team, PHE

The red dashed line on the heatmaps show the last four days where data may be incomplete due to reporting delays and removal of LFDs with accompanying negative PCR results.

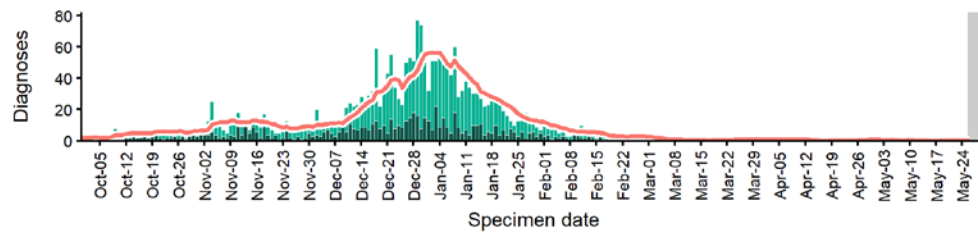
Please consider this data provisional.

Barking and Dagenham case numbers, testing numbers and positivity, 1 Oct to 29 May 2021

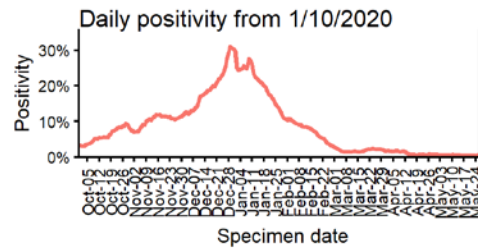
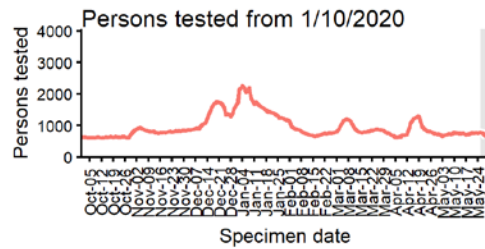
BARKING AND DAGENHAM
Cases and persons tested up to May 29 2021



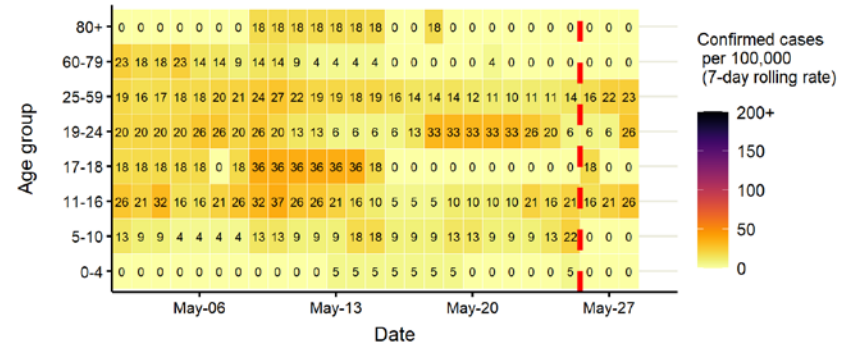
Daily cases from 1/10/2020: 60+ YEARS ONLY **NOTE: different y-axis scale**



4 days with incomplete data
 Pillar 1
 Pillar 2
 Total 7 day moving average (P1 + P2)



Age-stratified case rate heatmap for Barking and Dagenham: 2 May to 29 May 2021

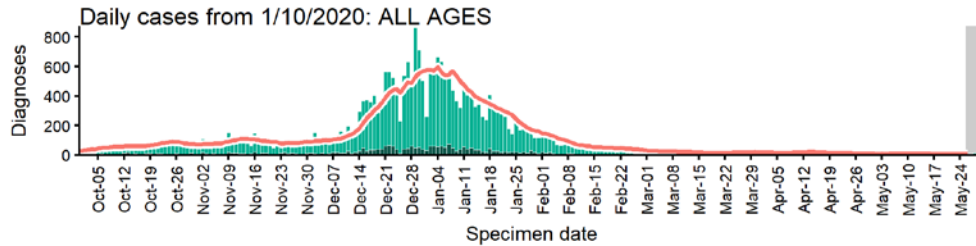


The red dashed line on the heatmaps show the last four days where data may be incomplete due to reporting delays and removal of LFDs with accompanying negative PCR results. Please consider this data provisional.

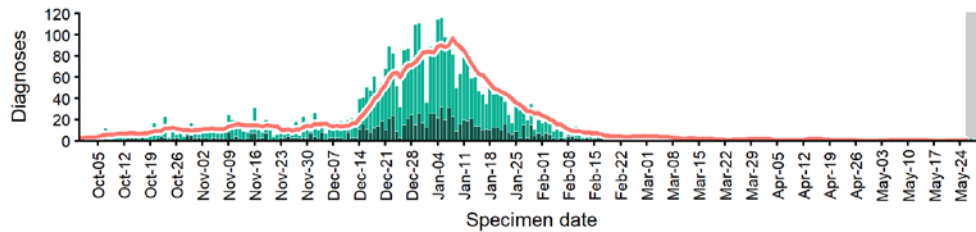
Data from SGSS. Produced by Outbreak Surveillance Team, PHE

Barnet case numbers, testing numbers and positivity, 1 Oct to 29 May 2021

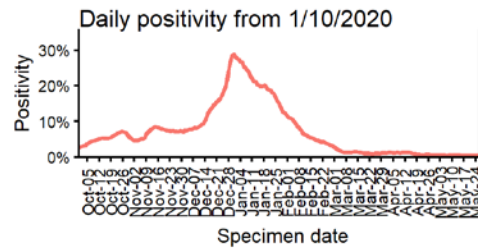
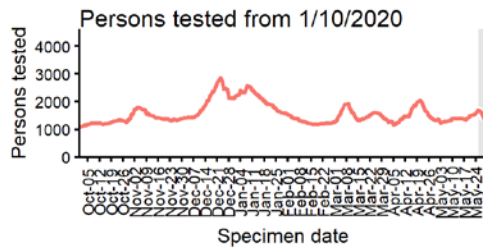
BARNET
Cases and persons tested up to May 29 2021



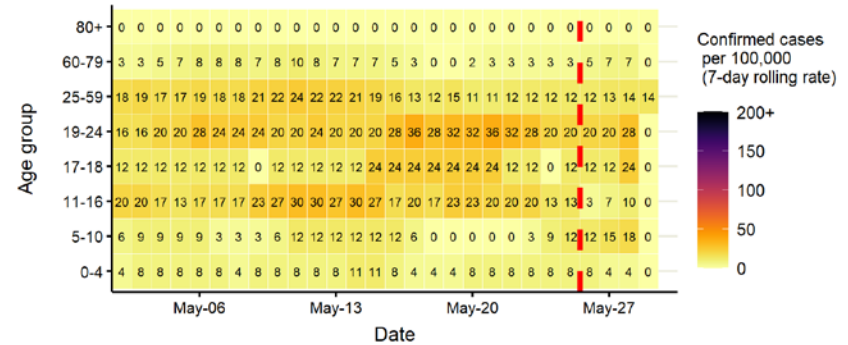
Daily cases from 1/10/2020: 60+ YEARS ONLY **NOTE: different y-axis scale**



4 days with incomplete data
 Pillar 1
 Pillar 2
 Total 7 day moving average (P1 + P2)



Age-stratified case rate heatmap for Barnet: 2 May to 29 May 2021

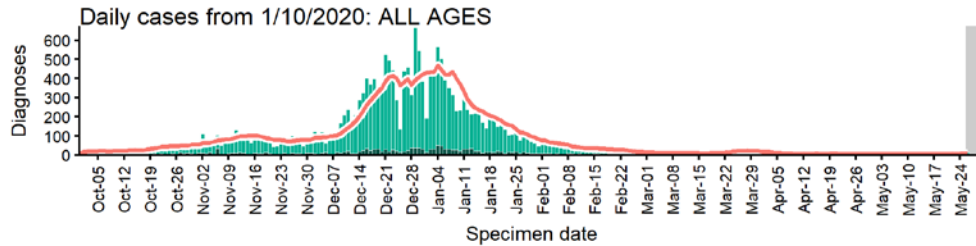


The red dashed line on the heatmaps show the last four days where data may be incomplete due to reporting delays and removal of LFDs with accompanying negative PCR results. Please consider this data provisional.

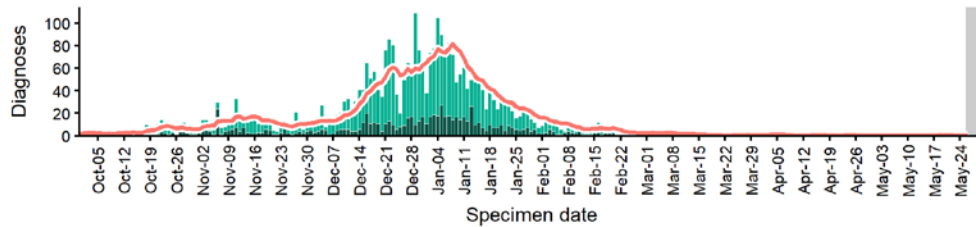
Data from SGSS. Produced by Outbreak Surveillance Team, PHE

Bexley case numbers, testing numbers and positivity, 1 Oct to 29 May 2021

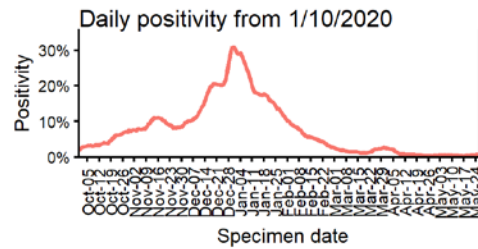
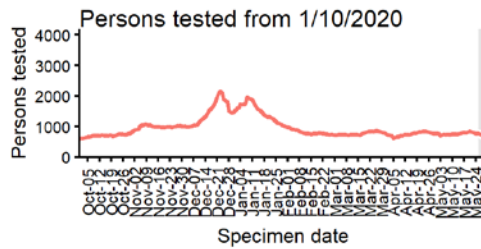
BEXLEY
Cases and persons tested up to May 29 2021



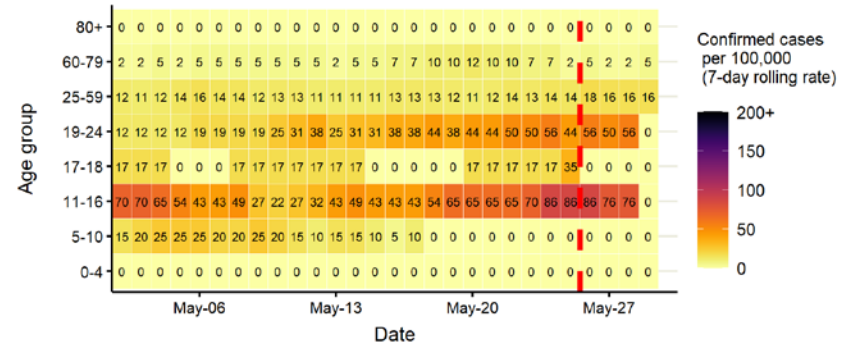
Daily cases from 1/10/2020: 60+ YEARS ONLY **NOTE: different y-axis scale**



4 days with incomplete data Pillar 1 Pillar 2 Total 7 day moving average (P1 + P2)



Age-stratified case rate heatmap for Bexley: 2 May to 29 May 2021

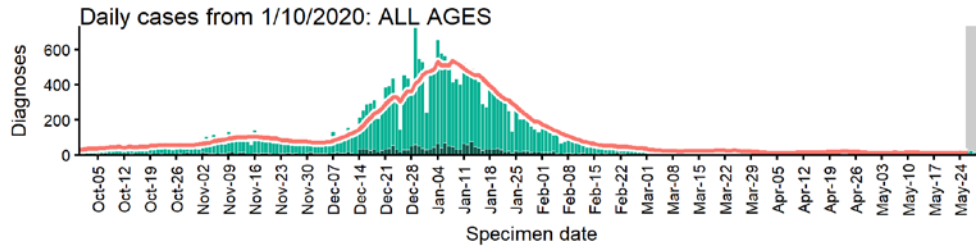


The red dashed line on the heatmaps show the last four days where data may be incomplete due to reporting delays and removal of LFDs with accompanying negative PCR results. Please consider this data provisional.

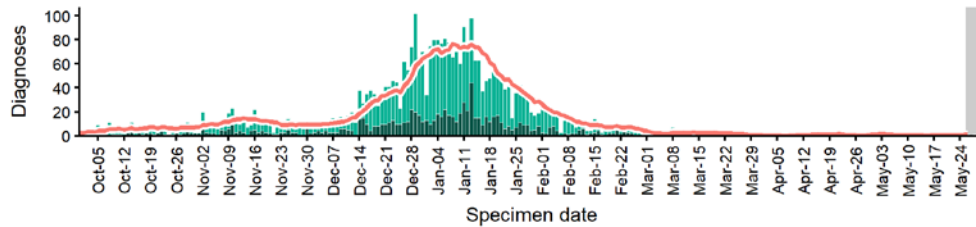
Data from SGSS. Produced by Outbreak Surveillance Team, PHE

Brent case numbers, testing numbers and positivity, 1 Oct to 29 May 2021

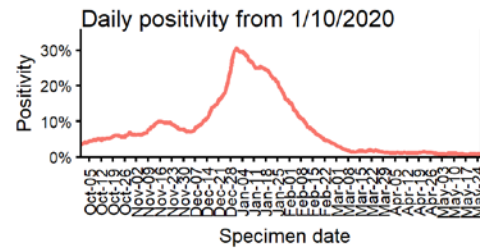
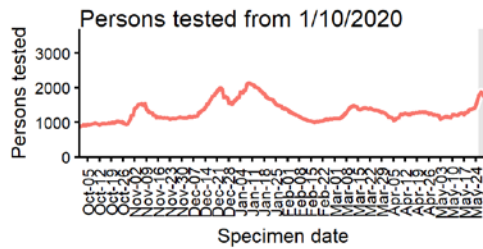
BRENT
Cases and persons tested up to May 29 2021



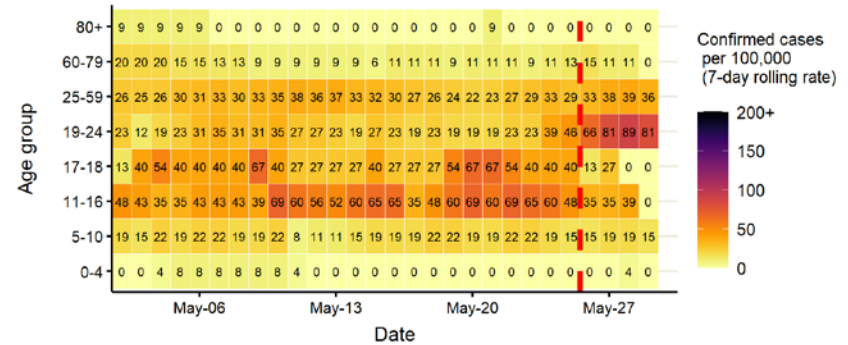
Daily cases from 1/10/2020: 60+ YEARS ONLY **NOTE: different y-axis scale**



4 days with incomplete data
 Pillar 1
 Pillar 2
 Total 7 day moving average (P1 + P2)



Age-stratified case rate heatmap for Brent: 2 May to 29 May 2021

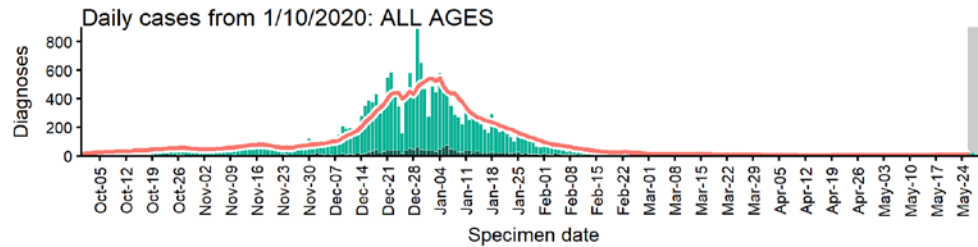


The red dashed line on the heatmaps show the last four days where data may be incomplete due to reporting delays and removal of LFDs with accompanying negative PCR results. Please consider this data provisional.

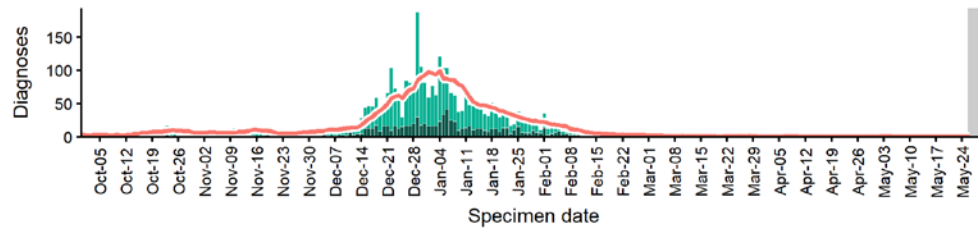
Data from SGSS. Produced by Outbreak Surveillance Team, PHE

Bromley case numbers, testing numbers and positivity, 1 Oct to 29 May 2021

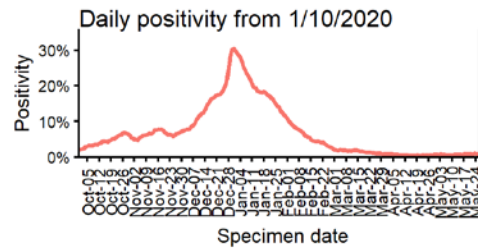
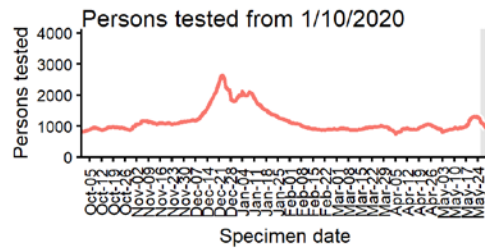
BROMLEY
Cases and persons tested up to May 29 2021



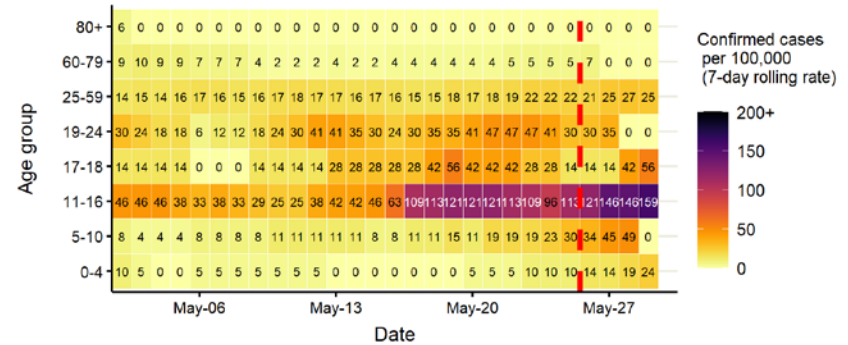
Daily cases from 1/10/2020: 60+ YEARS ONLY **NOTE: different y-axis scale**



4 days with incomplete data
 Pillar 1
 Pillar 2
 Total 7 day moving average (P1 + P2)



Age-stratified case rate heatmap for Bromley: 2 May to 29 May 2021

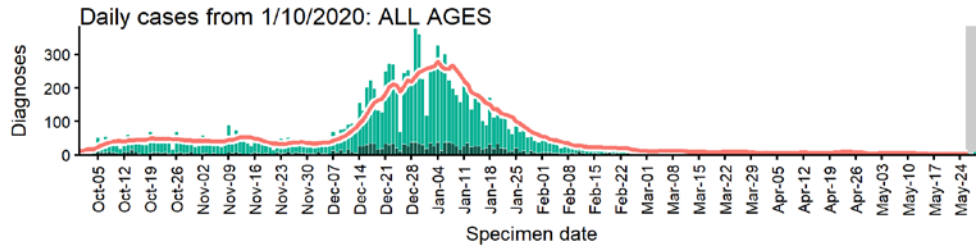


The red dashed line on the heatmaps show the last four days where data may be incomplete due to reporting delays and removal of LFDs with accompanying negative PCR results. Please consider this data provisional.

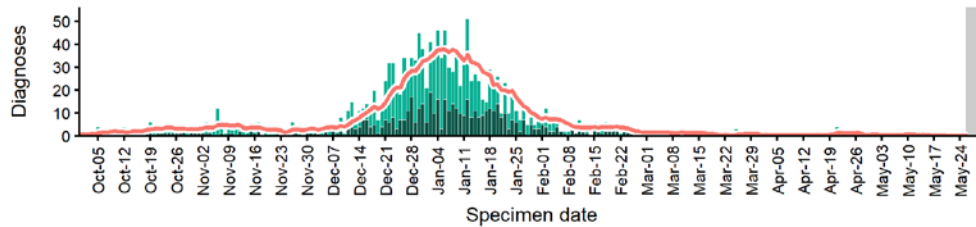
Data from SGSS. Produced by Outbreak Surveillance Team, PHE

Camden case numbers, testing numbers and positivity, 1 Oct to 29 May 2021

CAMDEN
Cases and persons tested up to May 29 2021

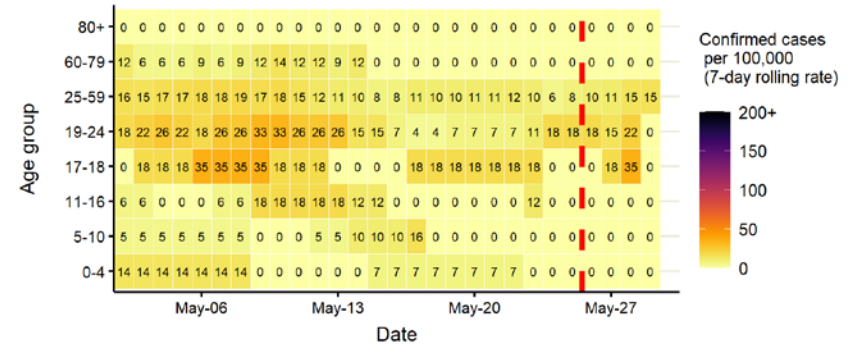


Daily cases from 1/10/2020: 60+ YEARS ONLY **NOTE: different y-axis scale**

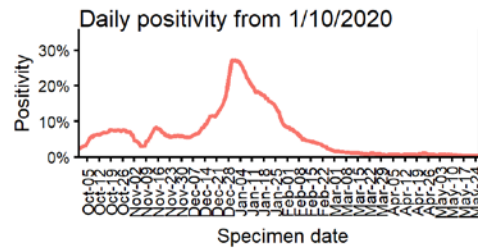
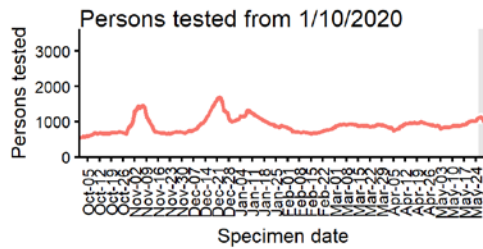


4 days with incomplete data Pillar 1 Pillar 2 Total 7 day moving average (P1 + P2)

Age-stratified case rate heatmap for Camden: 2 May to 29 May 2021



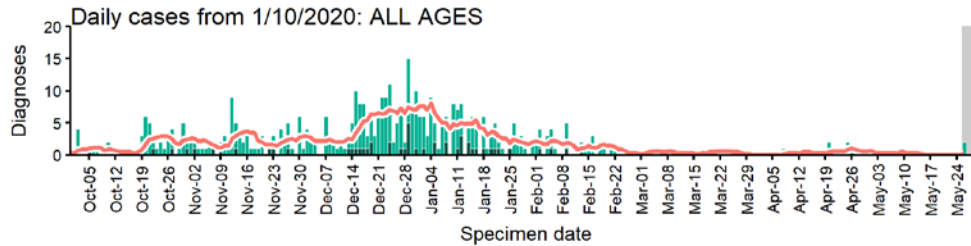
The red dashed line on the heatmaps show the last four days where data may be incomplete due to reporting delays and removal of LFDs with accompanying negative PCR results. Please consider this data provisional.



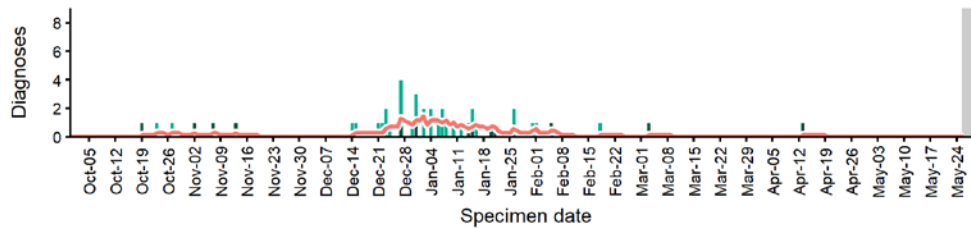
Data from SGSS. Produced by Outbreak Surveillance Team, PHE

City of London case numbers, testing numbers and positivity, 1 Oct to 29 May 2021

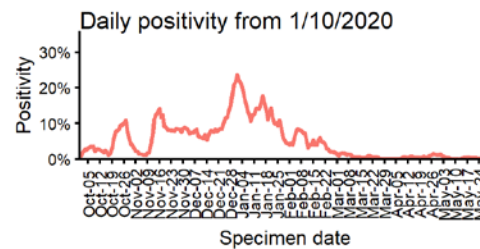
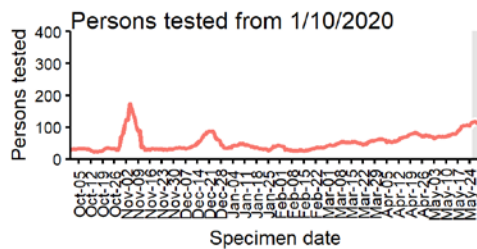
CITY OF LONDON
Cases and persons tested up to May 29 2021



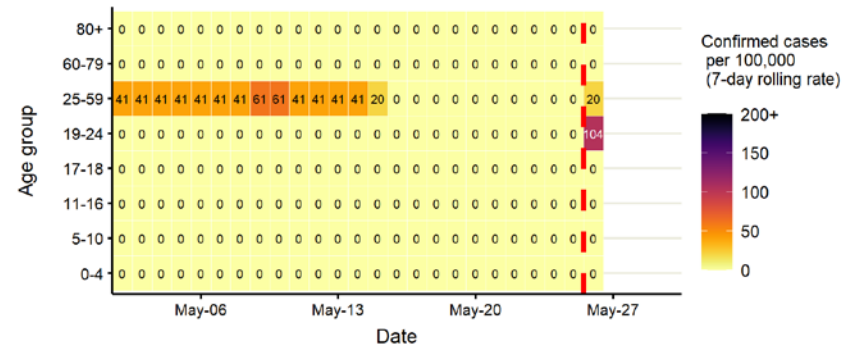
Daily cases from 1/10/2020: 60+ YEARS ONLY **NOTE: different y-axis scale**



4 days with incomplete data Pillar 1 Pillar 2 Total 7 day moving average (P1 + P2)



Age-stratified case rate heatmap for City of London: 2 May to 29 May 2021

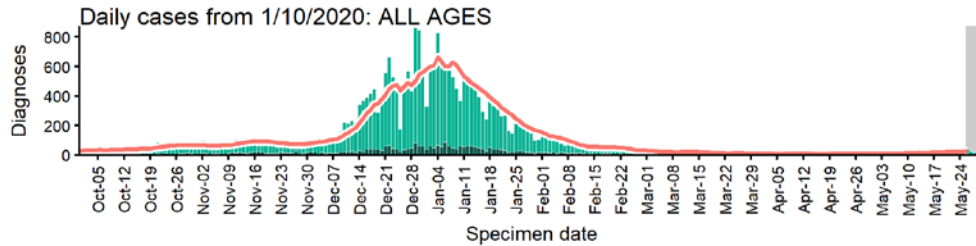


The red dashed line on the heatmaps show the last four days where data may be incomplete due to reporting delays and removal of LFDs with accompanying negative PCR results. Please consider this data provisional.

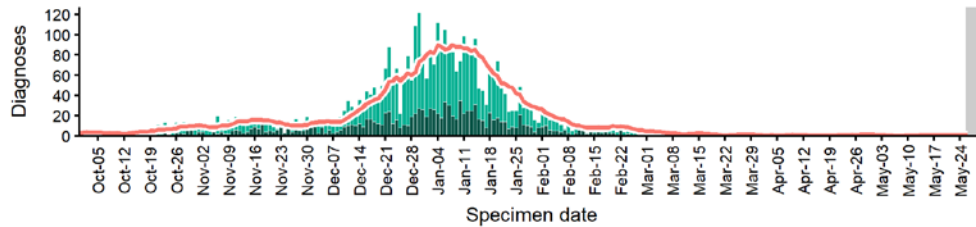
Data from SGSS. Produced by Outbreak Surveillance Team, PHE

Croydon case numbers, testing numbers and positivity, 1 Oct to 29 May 2021

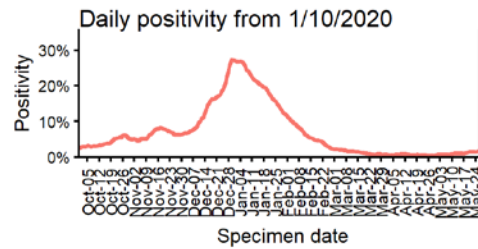
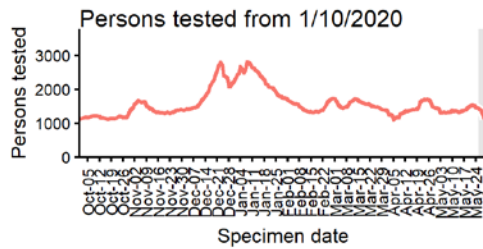
CROYDON
Cases and persons tested up to May 29 2021



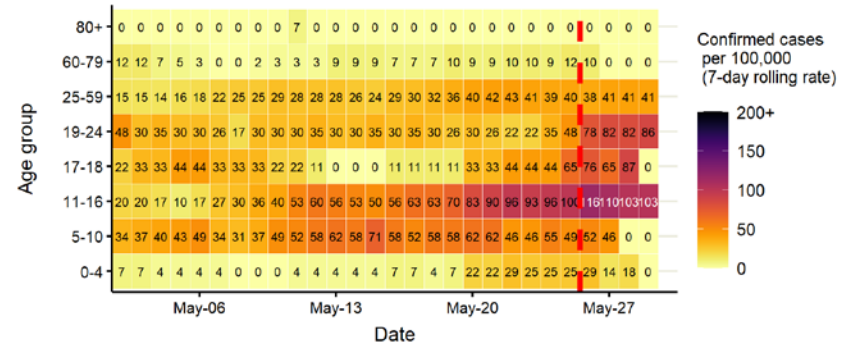
Daily cases from 1/10/2020: 60+ YEARS ONLY **NOTE: different y-axis scale**



4 days with incomplete data
 Pillar 1
 Pillar 2
 Total 7 day moving average (P1 + P2)



Age-stratified case rate heatmap for Croydon: 2 May to 29 May 2021

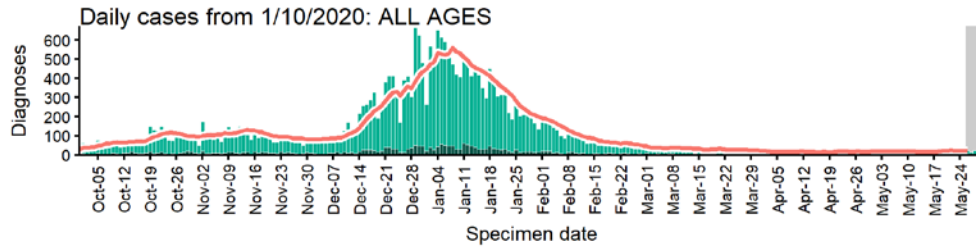


The red dashed line on the heatmaps show the last four days where data may be incomplete due to reporting delays and removal of LFDs with accompanying negative PCR results. Please consider this data provisional.

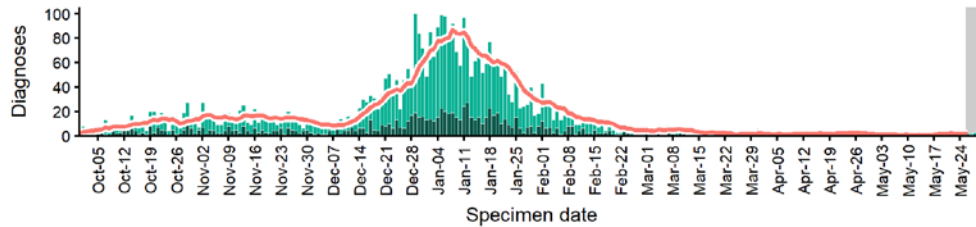
Data from SGSS. Produced by Outbreak Surveillance Team, PHE

Ealing case numbers, testing numbers and positivity, 1 Oct to 29 May 2021

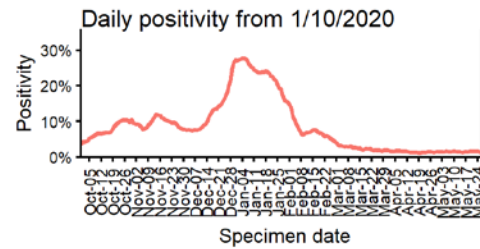
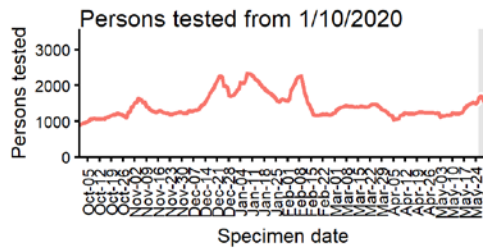
EALING Cases and persons tested up to May 29 2021



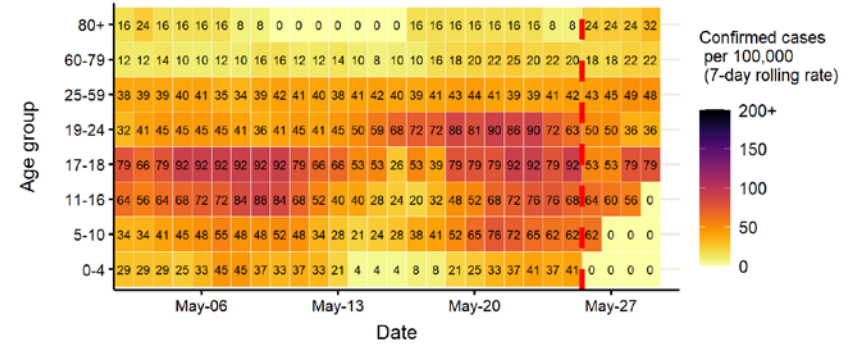
Daily cases from 1/10/2020: 60+ YEARS ONLY **NOTE: different y-axis scale**



4 days with incomplete data
 Pillar 1
 Pillar 2
 Total 7 day moving average (P1 + P2)



Age-stratified case rate heatmap for Ealing: 2 May to 29 May 2021

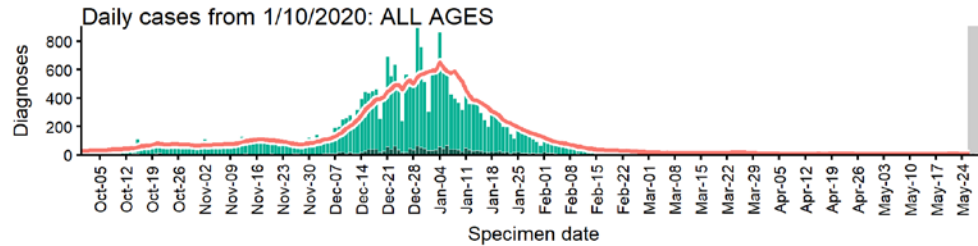


The red dashed line on the heatmaps show the last four days where data may be incomplete due to reporting delays and removal of LFDs with accompanying negative PCR results.

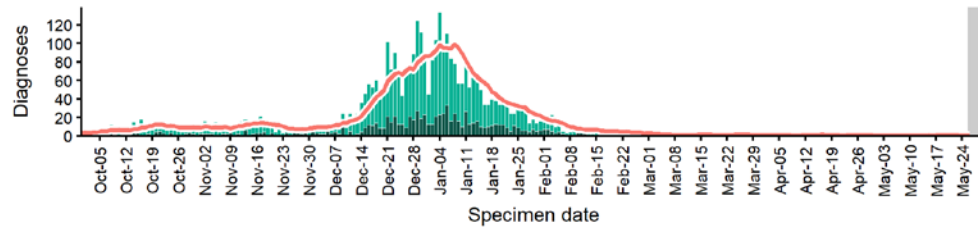
Please consider this data provisional.

Enfield case numbers, testing numbers and positivity, 1 Oct to 29 May 2021

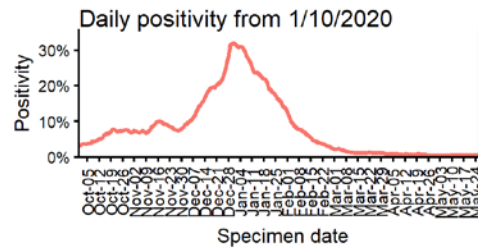
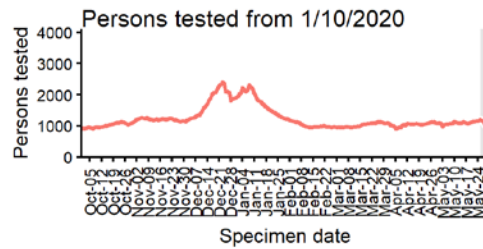
ENFIELD
Cases and persons tested up to May 29 2021



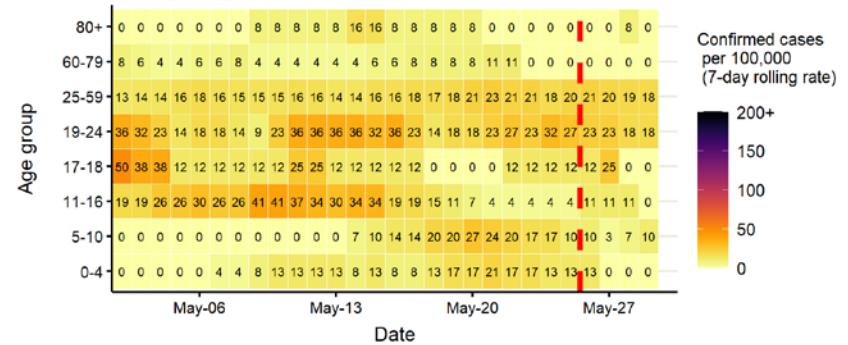
Daily cases from 1/10/2020: 60+ YEARS ONLY **NOTE: different y-axis scale**



4 days with incomplete data
 Pillar 1
 Pillar 2
 Total 7 day moving average (P1 + P2)



Age-stratified case rate heatmap for Enfield: 2 May to 29 May 2021

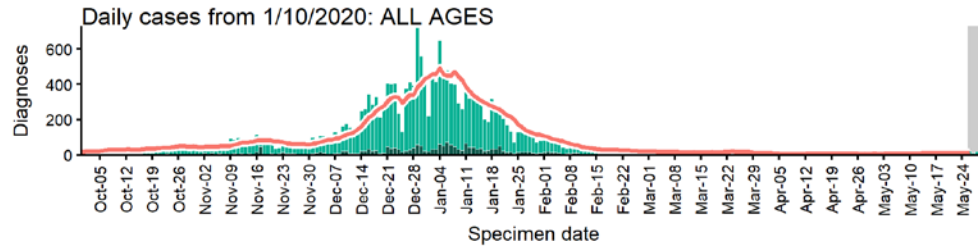


The red dashed line on the heatmaps show the last four days where data may be incomplete due to reporting delays and removal of LFDs with accompanying negative PCR results. Please consider this data provisional.

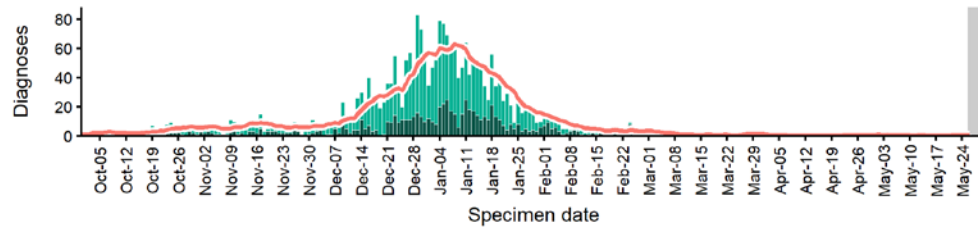
Data from SGSS. Produced by Outbreak Surveillance Team, PHE

Greenwich case numbers, testing numbers and positivity, 1 Oct to 29 May 2021

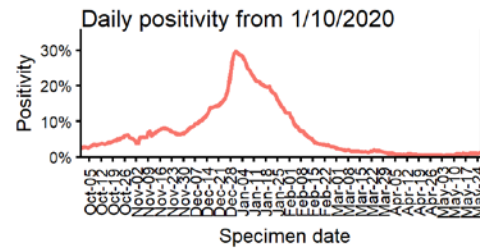
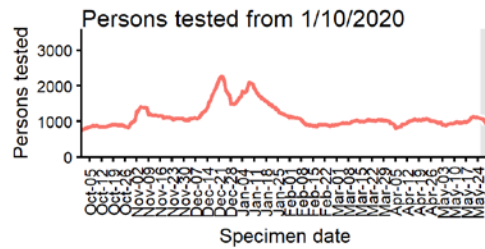
GREENWICH Cases and persons tested up to May 29 2021



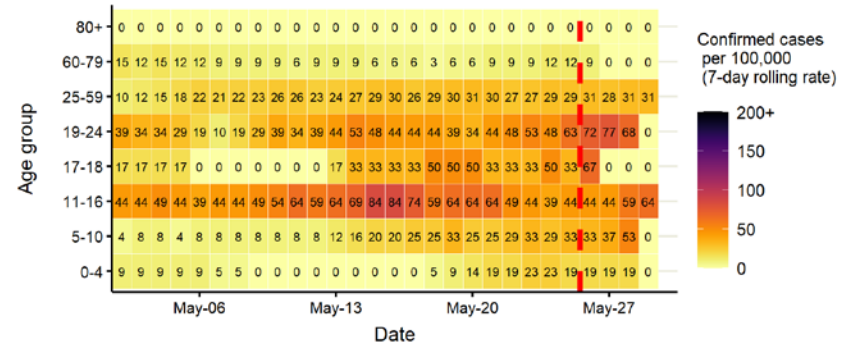
Daily cases from 1/10/2020: 60+ YEARS ONLY **NOTE: different y-axis scale**



4 days with incomplete data
 Pillar 1
 Pillar 2
 Total 7 day moving average (P1 + P2)



Age-stratified case rate heatmap for Greenwich: 2 May to 29 May 2021

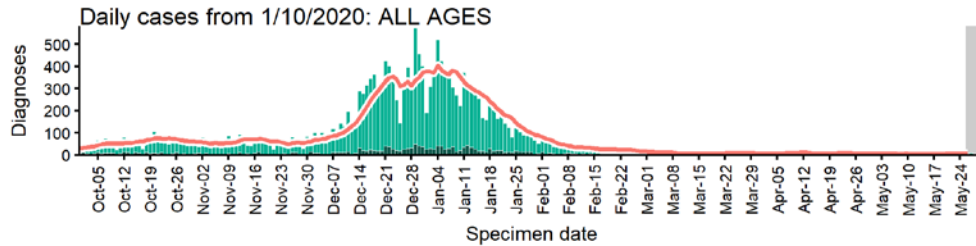


The red dashed line on the heatmaps show the last four days where data may be incomplete due to reporting delays and removal of LFDs with accompanying negative PCR results. Please consider this data provisional.

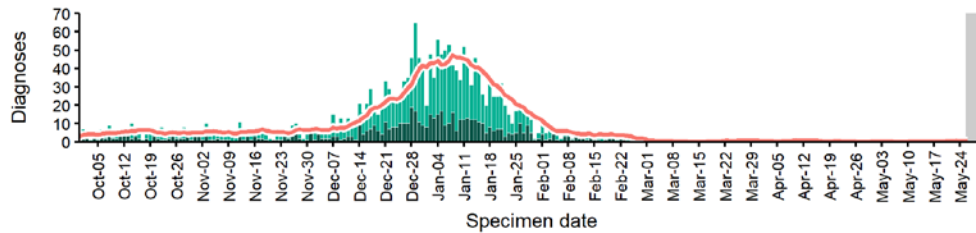
Data from SGSS. Produced by Outbreak Surveillance Team, PHE

Hackney case numbers, testing numbers and positivity, 1 Oct to 29 May 2021

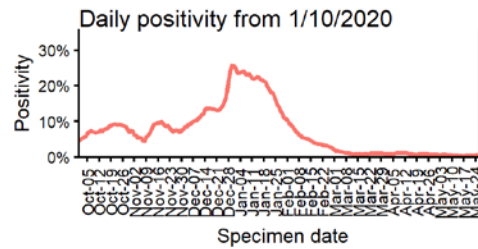
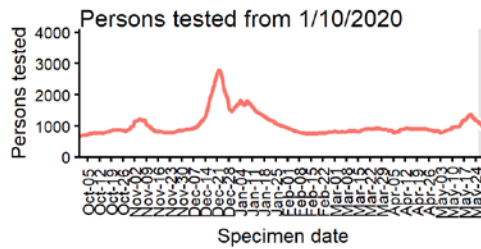
HACKNEY
Cases and persons tested up to May 29 2021



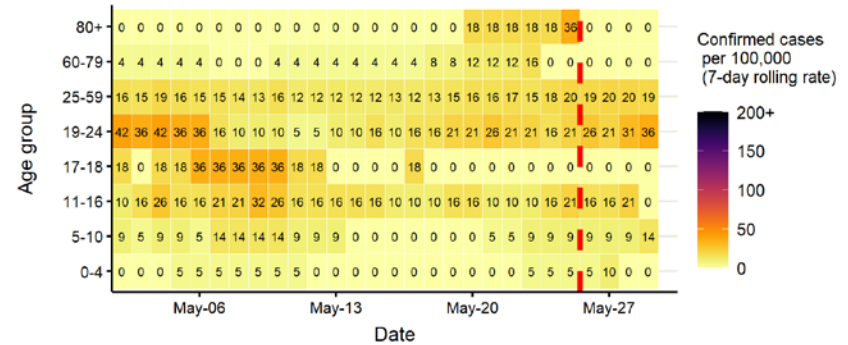
Daily cases from 1/10/2020: 60+ YEARS ONLY **NOTE: different y-axis scale**



4 days with incomplete data Pillar 1 Pillar 2 Total 7 day moving average (P1 + P2)



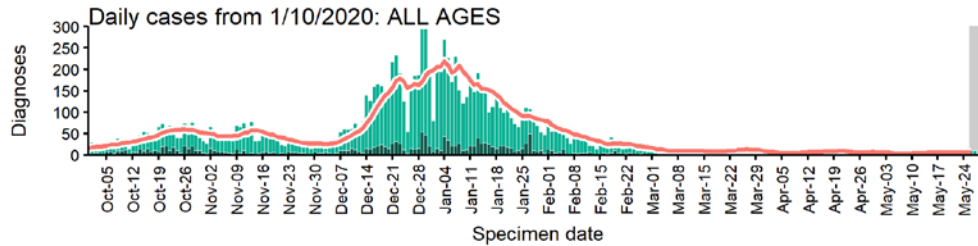
Age-stratified case rate heatmap for Hackney: 2 May to 29 May 2021



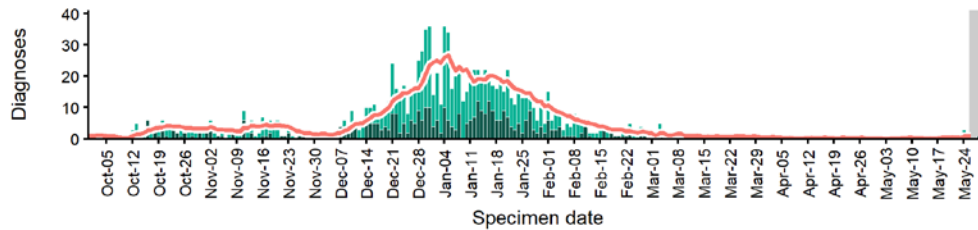
The red dashed line on the heatmaps show the last four days where data may be incomplete due to reporting delays and removal of LFDs with accompanying negative PCR results.
Please consider this data provisional.

Hammersmith and Fulham case numbers, testing numbers and positivity, 1 Oct to 29 May 2021

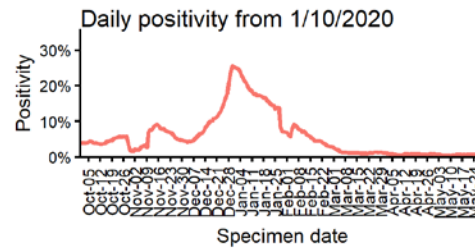
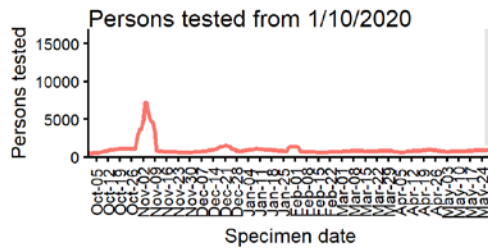
**HAMMERSMITH AND FULHAM
Cases and persons tested up to May 29 2021**



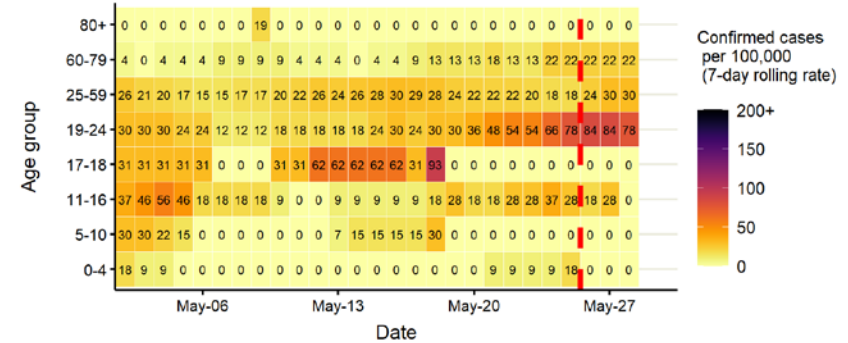
Daily cases from 1/10/2020: 60+ YEARS ONLY **NOTE: different y-axis scale**



4 days with incomplete data
 Pillar 1
 Pillar 2
 Total 7 day moving average (P1 + P2)



**Age-stratified case rate heatmap for Hammersmith and Fulham: 2
May to 29 May 2021**

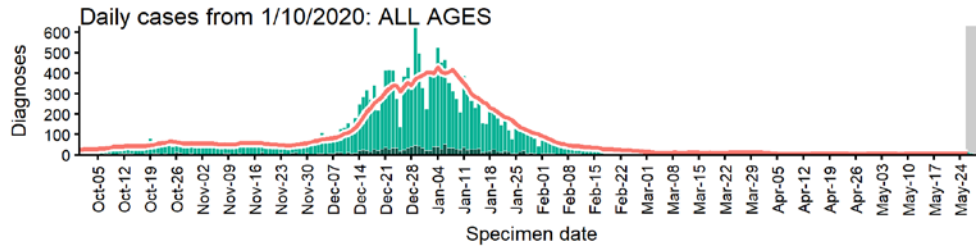


The red dashed line on the heatmaps show the last four days where data may be incomplete due to reporting delays and removal of LFDs with accompanying negative PCR results. Please consider this data provisional.

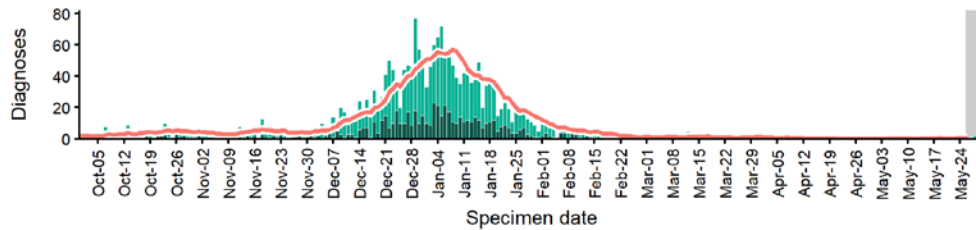
Data from SGSS. Produced by Outbreak Surveillance Team, PHE

Haringey case numbers, testing numbers and positivity, 1 Oct to 29 May 2021

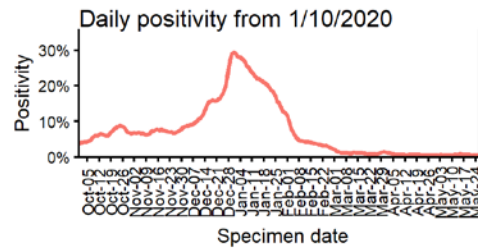
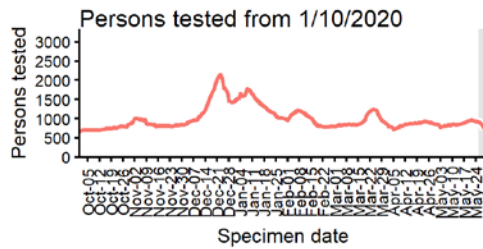
HARINGEY
Cases and persons tested up to May 29 2021



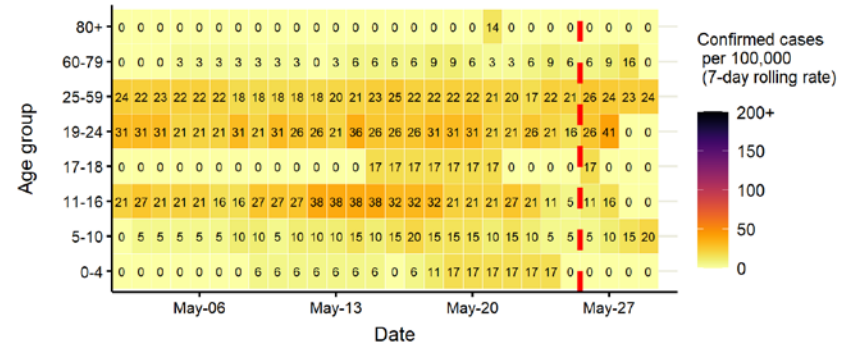
Daily cases from 1/10/2020: 60+ YEARS ONLY **NOTE: different y-axis scale**



4 days with incomplete data
 Pillar 1
 Pillar 2
 Total 7 day moving average (P1 + P2)



Age-stratified case rate heatmap for Haringey: 2 May to 29 May 2021

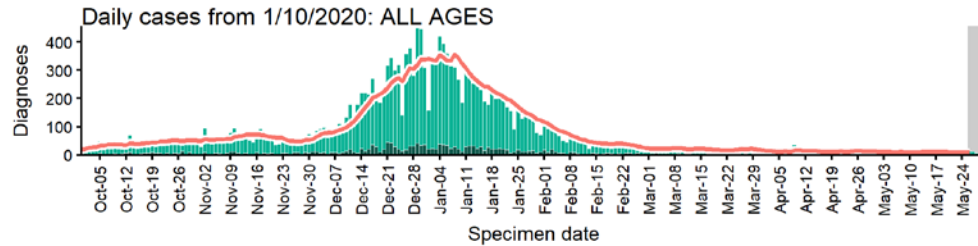


The red dashed line on the heatmaps show the last four days where data may be incomplete due to reporting delays and removal of LFDs with accompanying negative PCR results. Please consider this data provisional.

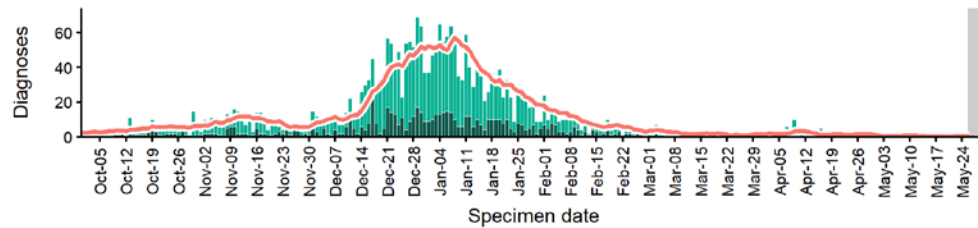
Data from SGSS. Produced by Outbreak Surveillance Team, PHE

Harrow case numbers, testing numbers and positivity, 1 Oct to 29 May 2021

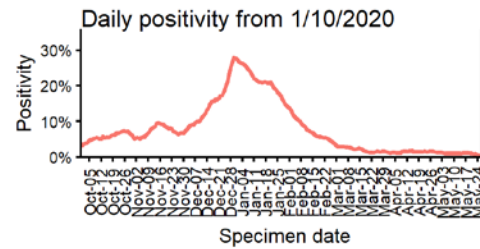
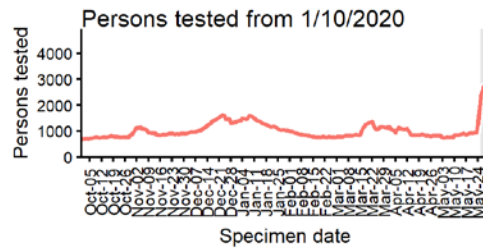
HARROW Cases and persons tested up to May 29 2021



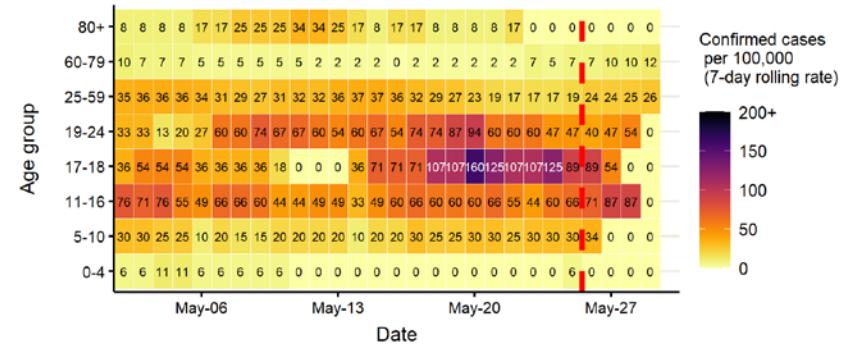
Daily cases from 1/10/2020: 60+ YEARS ONLY **NOTE: different y-axis scale**



4 days with incomplete data
 Pillar 1
 Pillar 2
 Total 7 day moving average (P1 + P2)



Age-stratified case rate heatmap for Harrow: 2 May to 29 May 2021

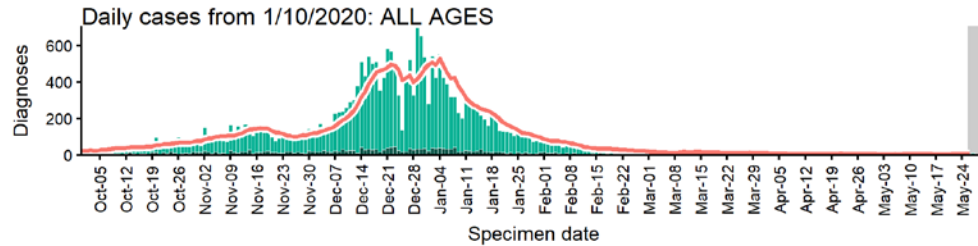


The red dashed line on the heatmaps show the last four days where data may be incomplete due to reporting delays and removal of LFDs with accompanying negative PCR results. Please consider this data provisional.

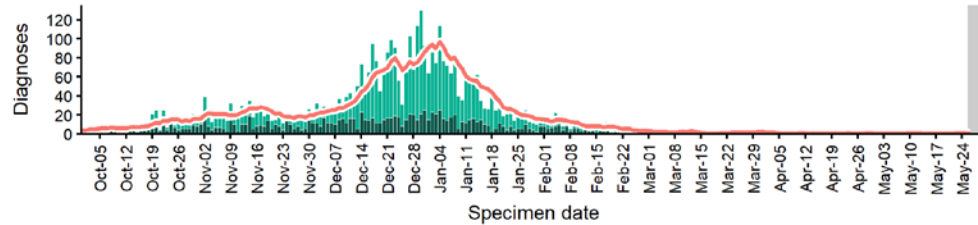
Data from SGSS. Produced by Outbreak Surveillance Team, PHE

Havering case numbers, testing numbers and positivity, 1 Oct to 29 May 2021

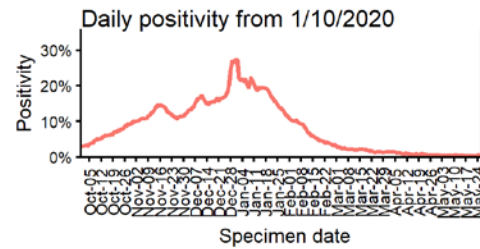
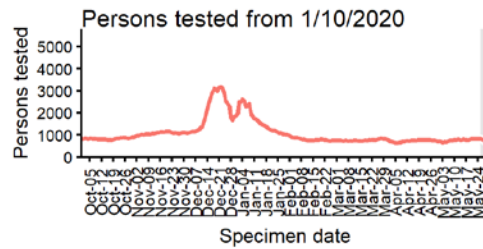
HAVERING Cases and persons tested up to May 29 2021



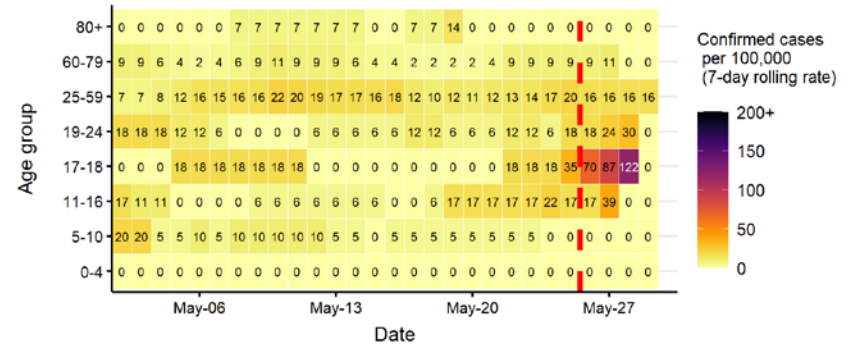
Daily cases from 1/10/2020: 60+ YEARS ONLY **NOTE: different y-axis scale**



4 days with incomplete data
 Pillar 1
 Pillar 2
 Total 7 day moving average (P1 + P2)



Age-stratified case rate heatmap for Havering: 2 May to 29 May 2021

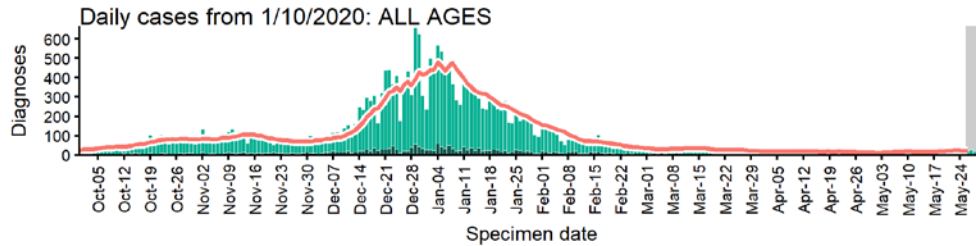


The red dashed line on the heatmaps show the last four days where data may be incomplete due to reporting delays and removal of LFDs with accompanying negative PCR results. Please consider this data provisional.

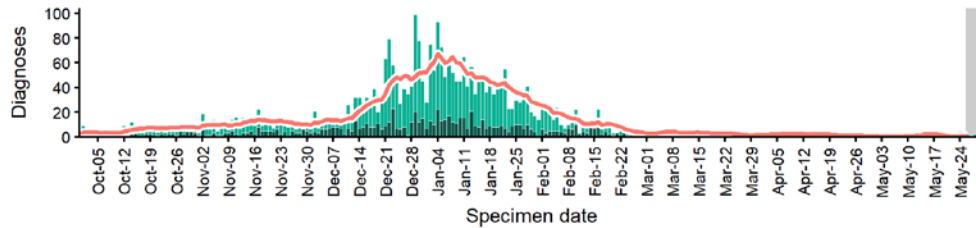
Data from SGSS. Produced by Outbreak Surveillance Team, PHE

Hillingdon case numbers, testing numbers and positivity, 1 Oct to 29 May 2021

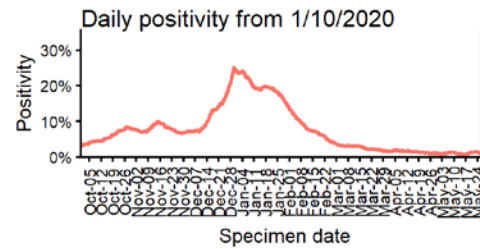
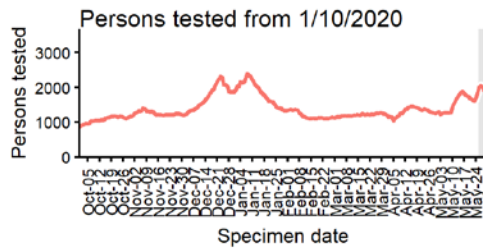
HILLINGDON
Cases and persons tested up to May 29 2021



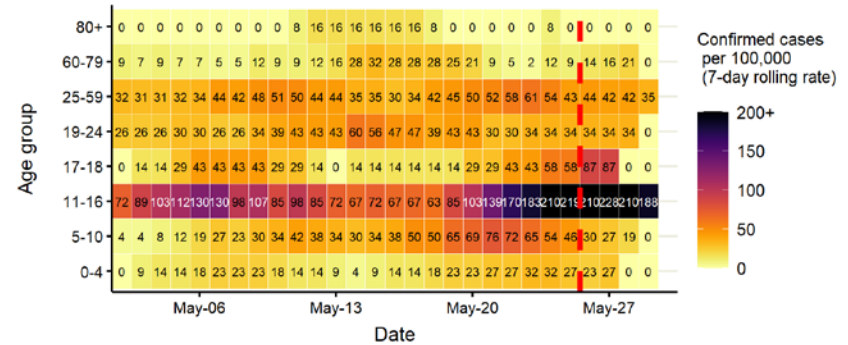
Daily cases from 1/10/2020: 60+ YEARS ONLY **NOTE: different y-axis scale**



4 days with incomplete data
 Pillar 1
 Pillar 2
 Total 7 day moving average (P1 + P2)



Age-stratified case rate heatmap for Hillingdon: 2 May to 29 May 2021

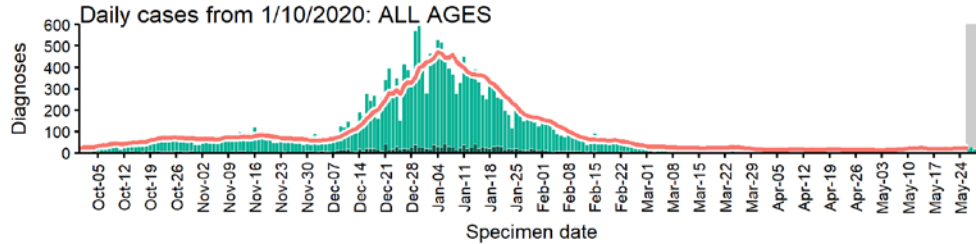


The red dashed line on the heatmaps show the last four days where data may be incomplete due to reporting delays and removal of LFDs with accompanying negative PCR results. Please consider this data provisional.

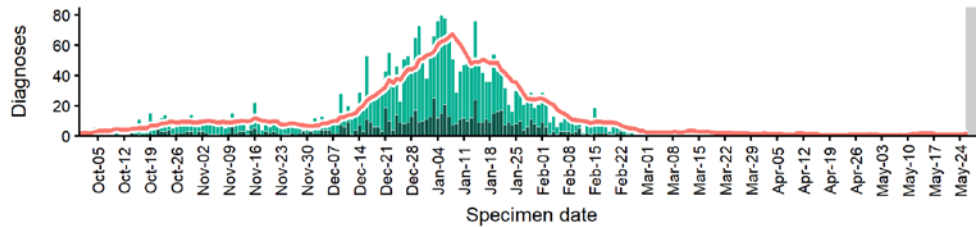
Data from SGSS. Produced by Outbreak Surveillance Team, PHE

Hounslow case numbers, testing numbers and positivity, 1 Oct to 29 May 2021

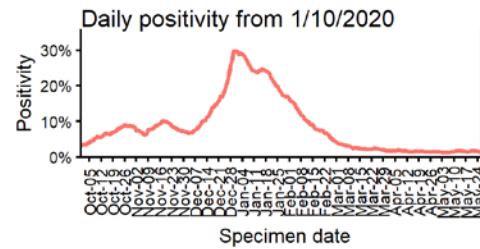
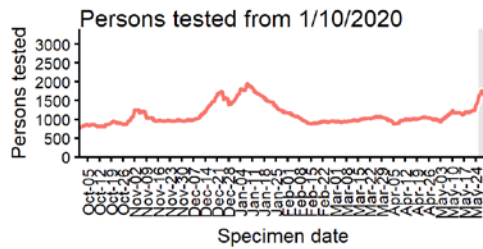
HOUNSLOW
Cases and persons tested up to May 29 2021



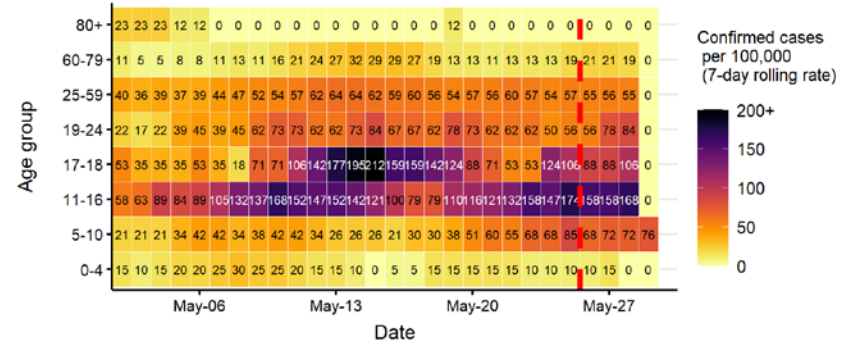
Daily cases from 1/10/2020: 60+ YEARS ONLY **NOTE: different y-axis scale**



4 days with incomplete data
 Pillar 1
 Pillar 2
 Total 7 day moving average (P1 + P2)



Age-stratified case rate heatmap for Hounslow: 2 May to 29 May 2021

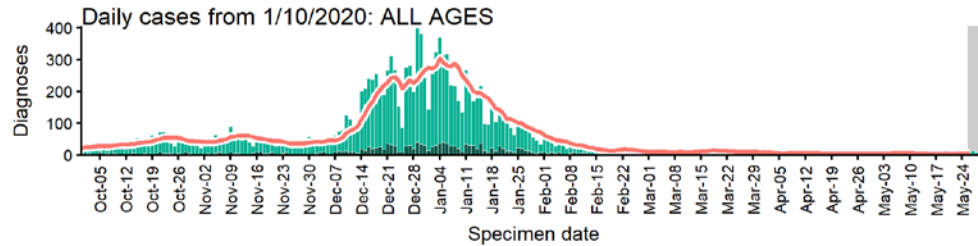


The red dashed line on the heatmaps show the last four days where data may be incomplete due to reporting delays and removal of LFDs with accompanying negative PCR results. Please consider this data provisional.

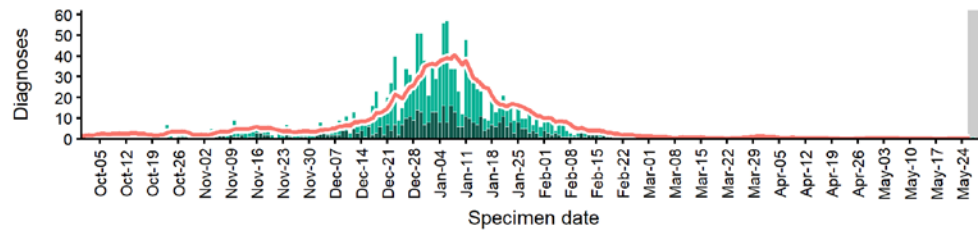
Data from SGSS. Produced by Outbreak Surveillance Team, PHE

Islington case numbers, testing numbers and positivity, 1 Oct to 29 May 2021

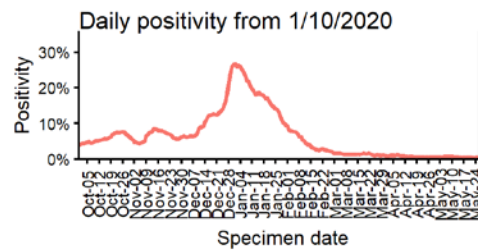
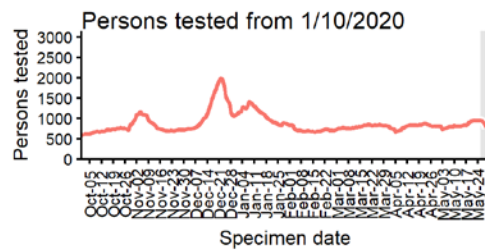
ISLINGTON
Cases and persons tested up to May 29 2021



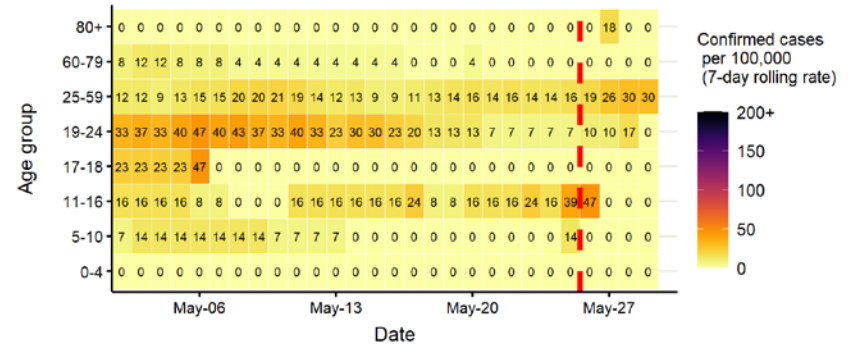
Daily cases from 1/10/2020: 60+ YEARS ONLY **NOTE: different y-axis scale**



4 days with incomplete data
 Pillar 1
 Pillar 2
 Total 7 day moving average (P1 + P2)



Age-stratified case rate heatmap for Islington: 2 May to 29 May 2021

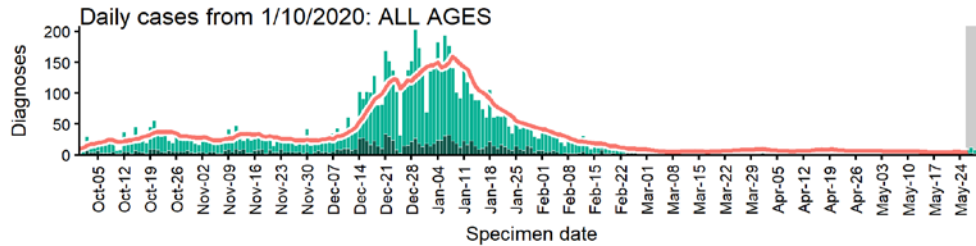


The red dashed line on the heatmaps show the last four days where data may be incomplete due to reporting delays and removal of LFDs with accompanying negative PCR results. Please consider this data provisional.

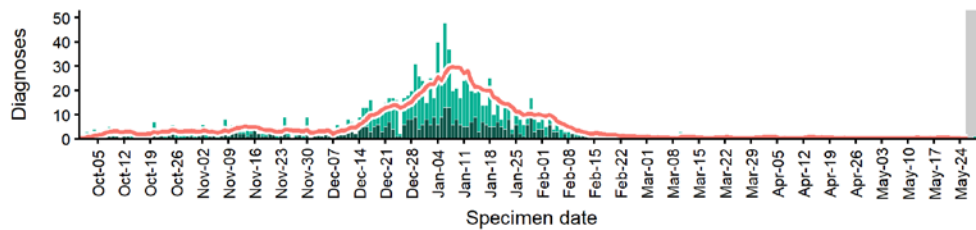
Data from SGSS. Produced by Outbreak Surveillance Team, PHE

Kensington and Chelsea case numbers, testing numbers and positivity, 1 Oct to 29 May 2021

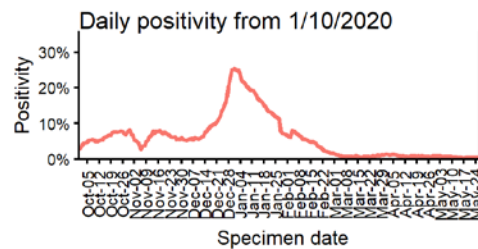
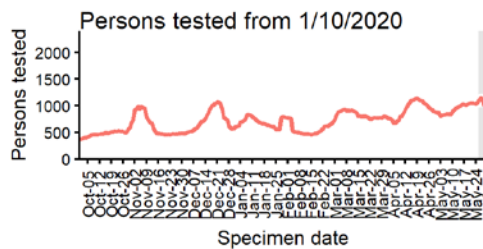
**KENSINGTON AND CHELSEA
Cases and persons tested up to May 29 2021**



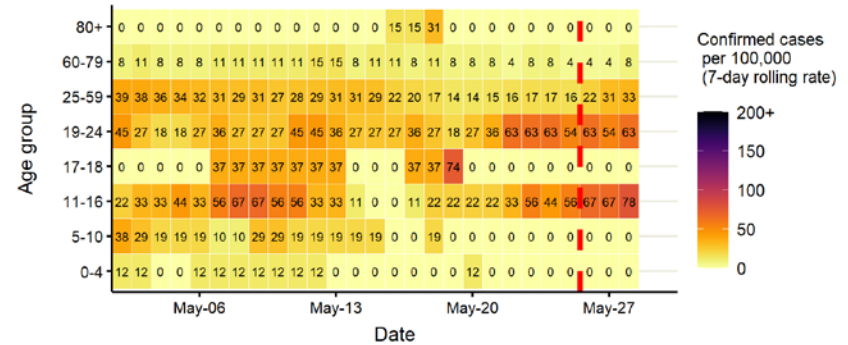
Daily cases from 1/10/2020: 60+ YEARS ONLY **NOTE: different y-axis scale**



4 days with incomplete data
 Pillar 1
 Pillar 2
 Total 7 day moving average (P1 + P2)



**Age-stratified case rate heatmap for Kensington and Chelsea: 2
May to 29 May 2021**

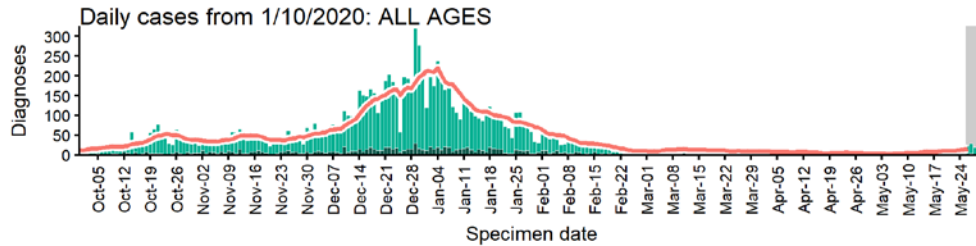


The red dashed line on the heatmaps show the last four days where data may be incomplete due to reporting delays and removal of LFDs with accompanying negative PCR results. Please consider this data provisional.

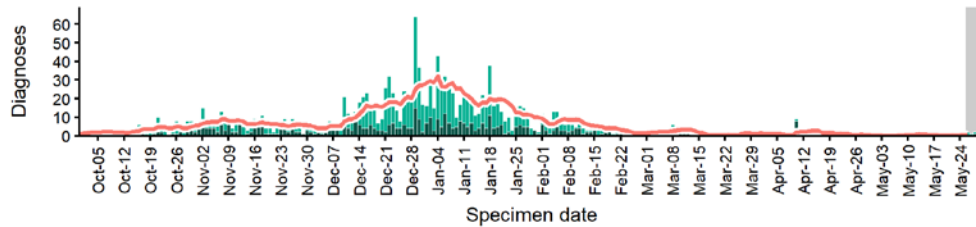
Data from SGSS. Produced by Outbreak Surveillance Team, PHE

Kingston upon Thames case numbers, testing numbers and positivity, 1 Oct to 29 May 2021

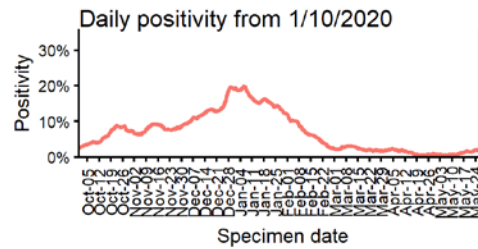
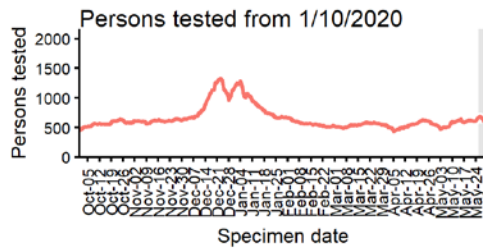
KINGSTON UPON THAMES
Cases and persons tested up to May 29 2021



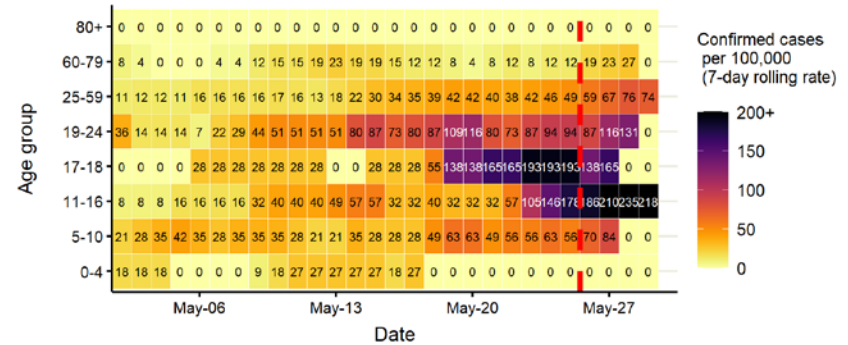
Daily cases from 1/10/2020: 60+ YEARS ONLY **NOTE: different y-axis scale**



4 days with incomplete data
 Pillar 1
 Pillar 2
 Total 7 day moving average (P1 + P2)



Age-stratified case rate heatmap for Kingston upon Thames: 2 May to 29 May 2021

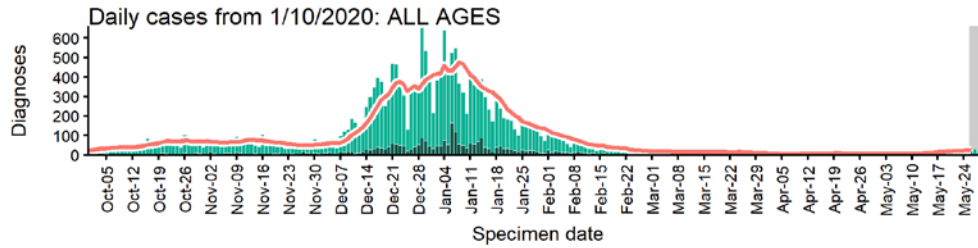


The red dashed line on the heatmaps show the last four days where data may be incomplete due to reporting delays and removal of LFDs with accompanying negative PCR results. Please consider this data provisional.

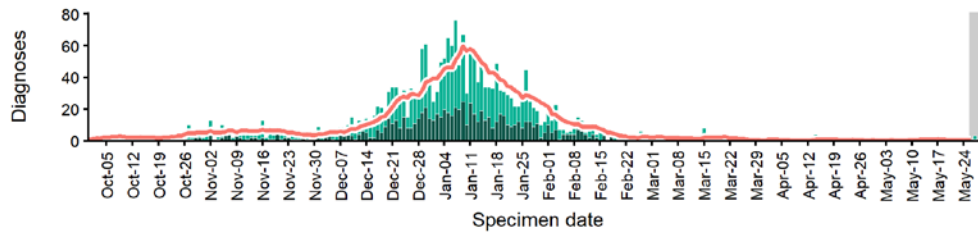
Data from SGSS. Produced by Outbreak Surveillance Team, PHE

Lambeth case numbers, testing numbers and positivity, 1 Oct to 29 May 2021

LAMBETH
Cases and persons tested up to May 29 2021

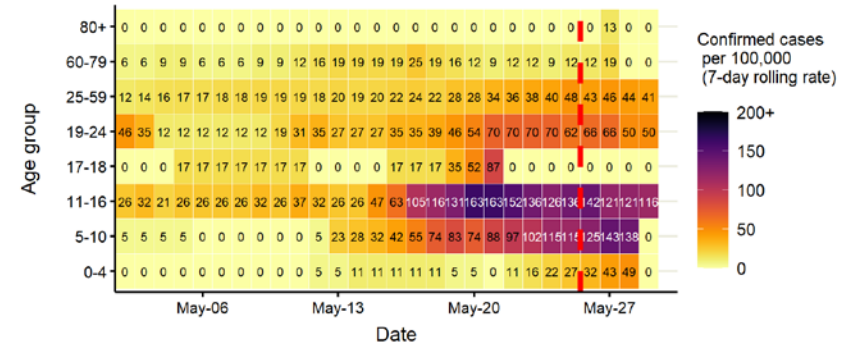


Daily cases from 1/10/2020: 60+ YEARS ONLY **NOTE: different y-axis scale**

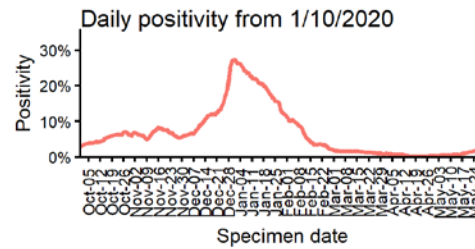
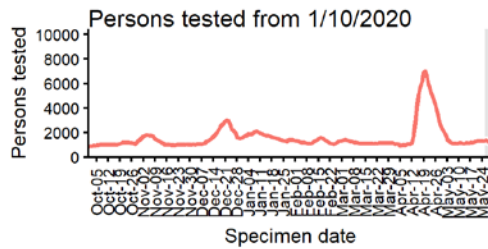


4 days with incomplete data Pillar 1 Pillar 2 Total 7 day moving average (P1 + P2)

Age-stratified case rate heatmap for Lambeth: 2 May to 29 May 2021



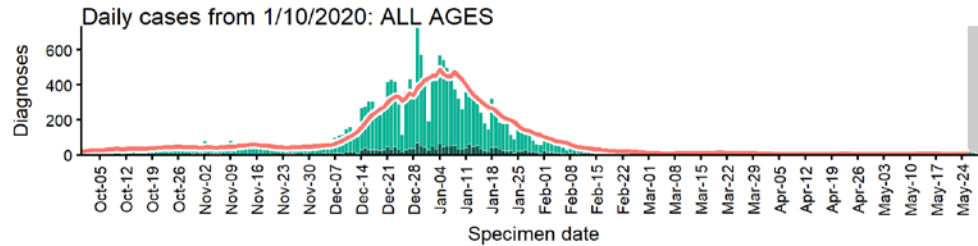
The red dashed line on the heatmaps show the last four days where data may be incomplete due to reporting delays and removal of LFDs with accompanying negative PCR results. Please consider this data provisional.



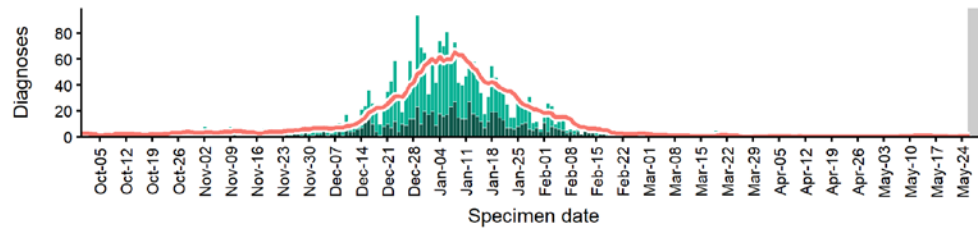
Data from SGSS. Produced by Outbreak Surveillance Team, PHE

Lewisham case numbers, testing numbers and positivity, 1 Oct to 29 May 2021

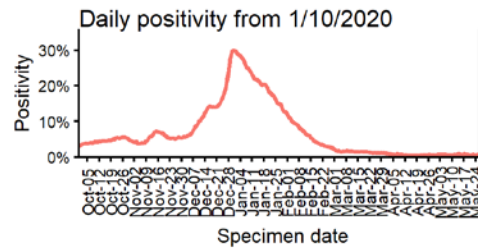
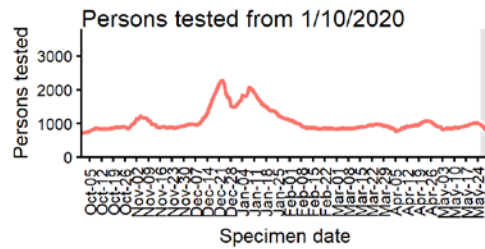
LEWISHAM Cases and persons tested up to May 29 2021



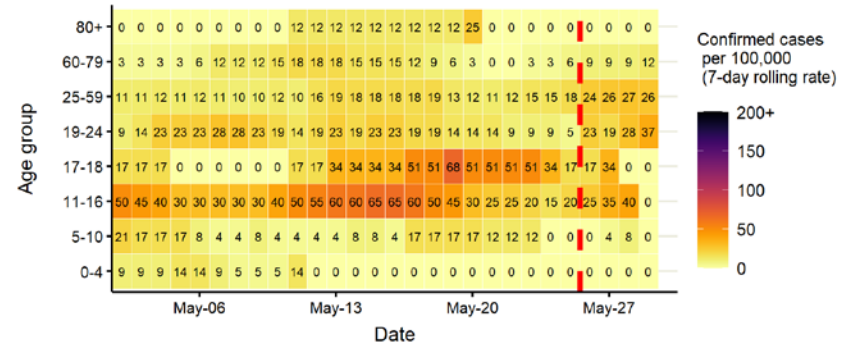
Daily cases from 1/10/2020: 60+ YEARS ONLY **NOTE: different y-axis scale**



4 days with incomplete data Pillar 1 Pillar 2 Total 7 day moving average (P1 + P2)



Age-stratified case rate heatmap for Lewisham: 2 May to 29 May 2021

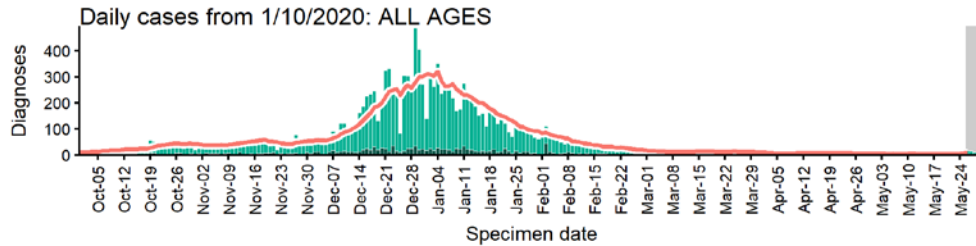


The red dashed line on the heatmaps show the last four days where data may be incomplete due to reporting delays and removal of LFDs with accompanying negative PCR results. Please consider this data provisional.

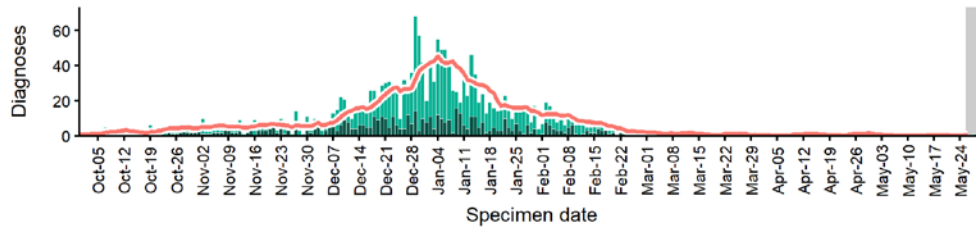
Data from SGSS. Produced by Outbreak Surveillance Team, PHE

Merton case numbers, testing numbers and positivity, 1 Oct to 29 May 2021

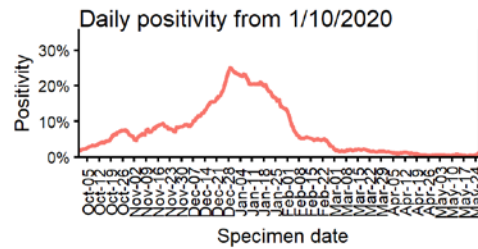
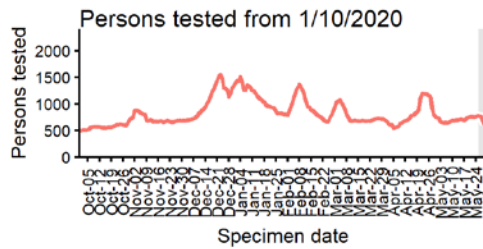
MERTON Cases and persons tested up to May 29 2021



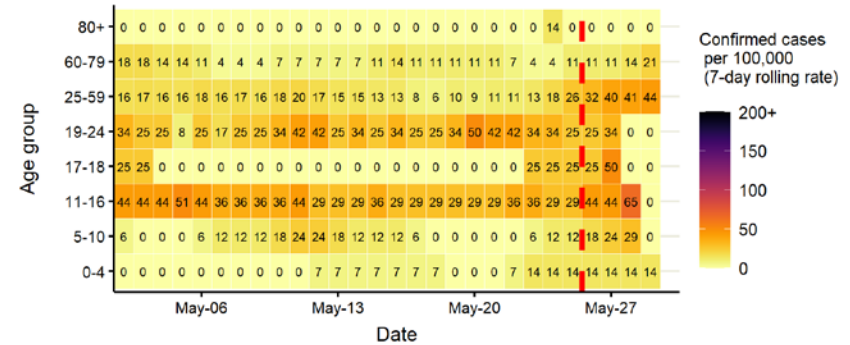
Daily cases from 1/10/2020: 60+ YEARS ONLY **NOTE: different y-axis scale**



4 days with incomplete data
 Pillar 1
 Pillar 2
 Total 7 day moving average (P1 + P2)



Age-stratified case rate heatmap for Merton: 2 May to 29 May 2021

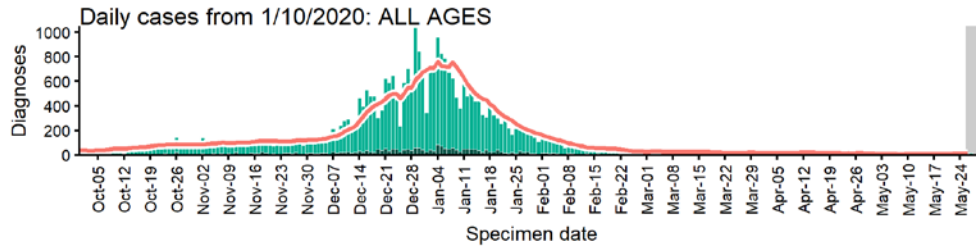


The red dashed line on the heatmaps show the last four days where data may be incomplete due to reporting delays and removal of LFDs with accompanying negative PCR results. Please consider this data provisional.

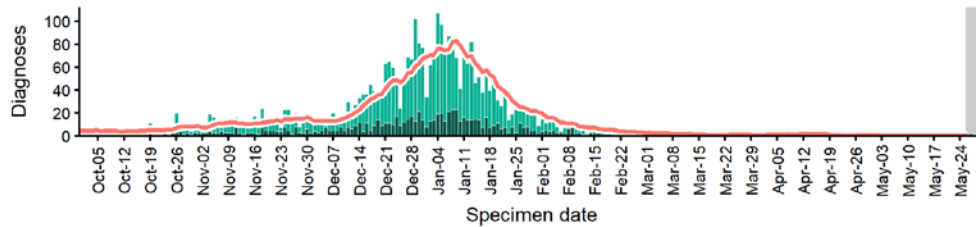
Data from SGSS. Produced by Outbreak Surveillance Team, PHE

Newham case numbers, testing numbers and positivity, 1 Oct to 29 May 2021

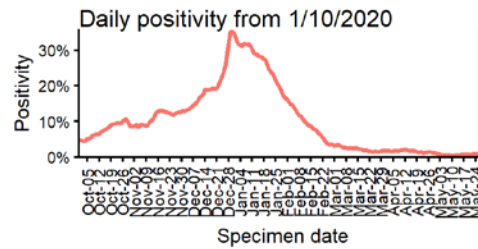
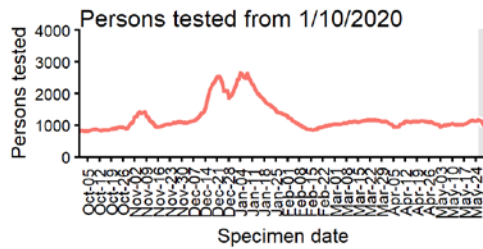
NEWHAM
Cases and persons tested up to May 29 2021



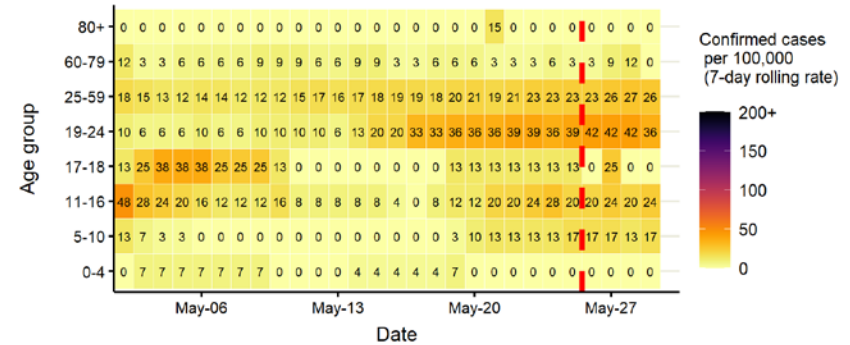
Daily cases from 1/10/2020: 60+ YEARS ONLY **NOTE: different y-axis scale**



4 days with incomplete data
 Pillar 1
 Pillar 2
 Total 7 day moving average (P1 + P2)



Age-stratified case rate heatmap for Newham: 2 May to 29 May 2021

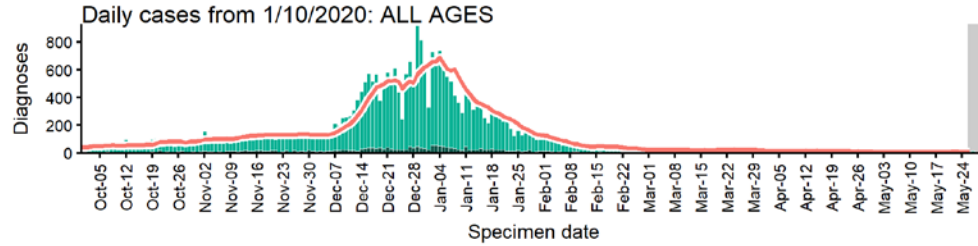


The red dashed line on the heatmaps show the last four days where data may be incomplete due to reporting delays and removal of LFDs with accompanying negative PCR results. Please consider this data provisional.

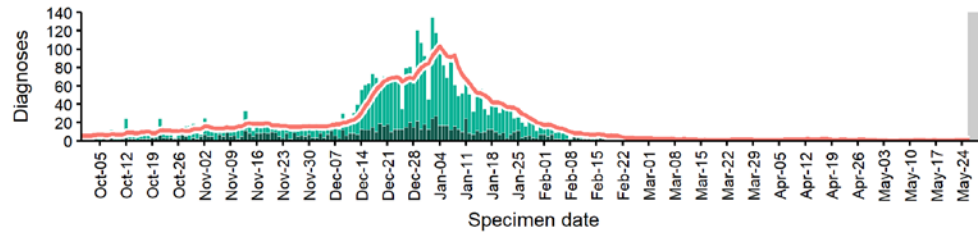
Data from SGSS. Produced by Outbreak Surveillance Team, PHE

Redbridge case numbers, testing numbers and positivity, 1 Oct to 29 May 2021

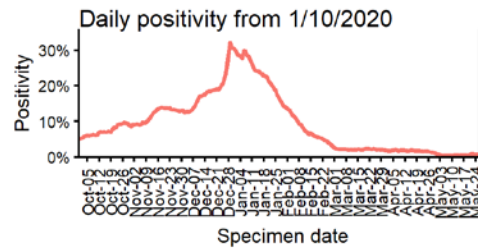
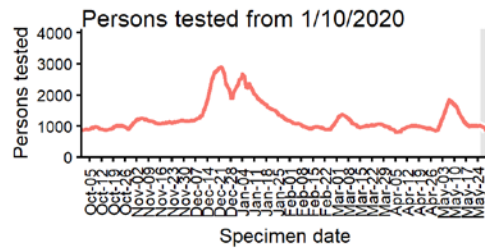
REDBRIDGE Cases and persons tested up to May 29 2021



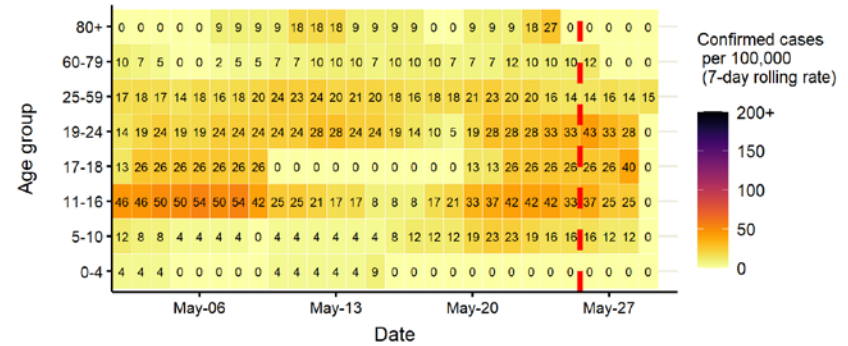
Daily cases from 1/10/2020: 60+ YEARS ONLY **NOTE: different y-axis scale**



4 days with incomplete data
 Pillar 1
 Pillar 2
 Total 7 day moving average (P1 + P2)



Age-stratified case rate heatmap for Redbridge: 2 May to 29 May 2021

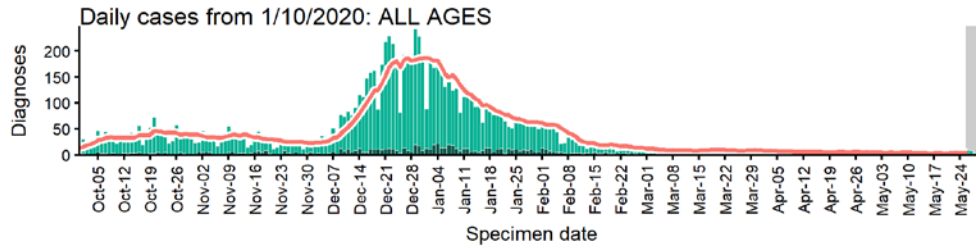


The red dashed line on the heatmaps show the last four days where data may be incomplete due to reporting delays and removal of LFDs with accompanying negative PCR results. Please consider this data provisional.

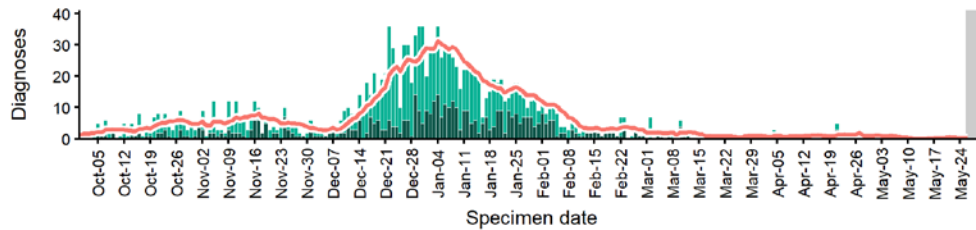
Data from SGSS. Produced by Outbreak Surveillance Team, PHE

Richmond upon Thames case numbers, testing numbers and positivity, 1 Oct to 29 May 2021

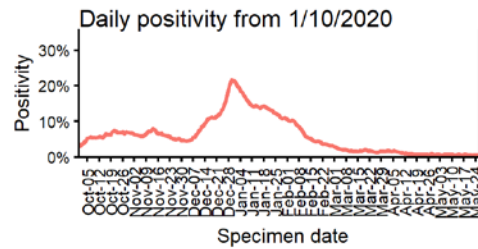
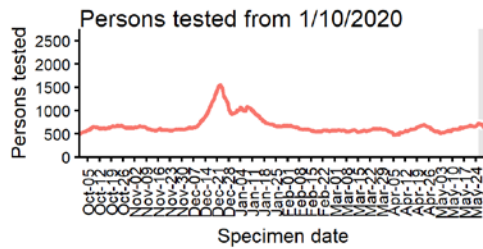
RICHMOND UPON THAMES
Cases and persons tested up to May 29 2021



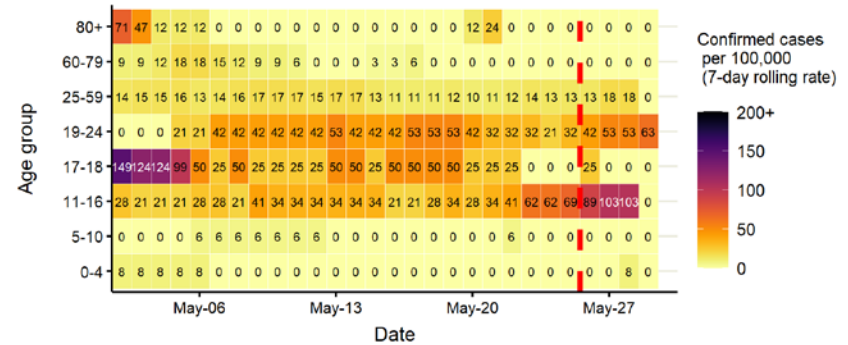
Daily cases from 1/10/2020: 60+ YEARS ONLY **NOTE: different y-axis scale**



4 days with incomplete data
 Pillar 1
 Pillar 2
 Total 7 day moving average (P1 + P2)



Age-stratified case rate heatmap for Richmond upon Thames: 2 May to 29 May 2021

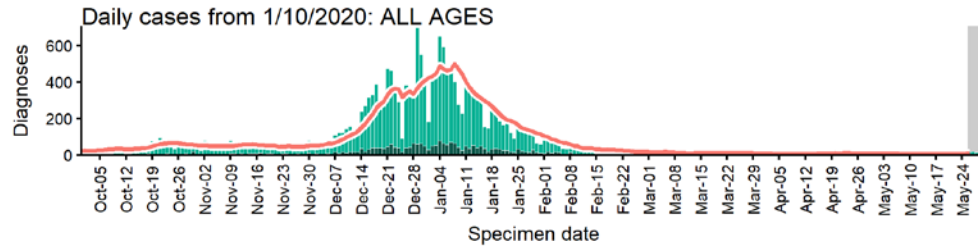


The red dashed line on the heatmaps show the last four days where data may be incomplete due to reporting delays and removal of LFDs with accompanying negative PCR results. Please consider this data provisional.

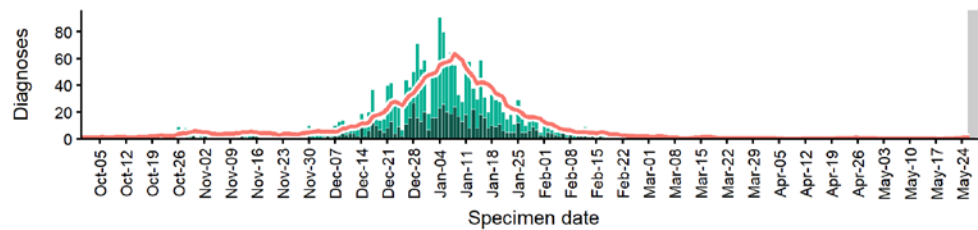
Data from SGSS. Produced by Outbreak Surveillance Team, PHE

Southwark case numbers, testing numbers and positivity, 1 Oct to 29 May 2021

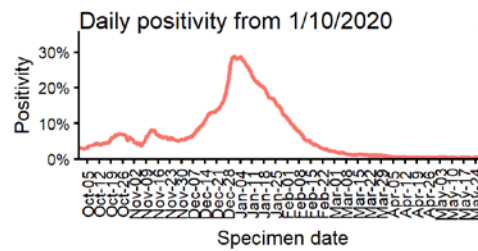
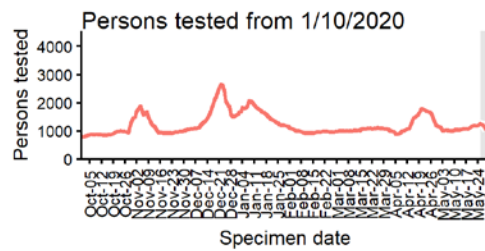
SOUTHWARK
Cases and persons tested up to May 29 2021



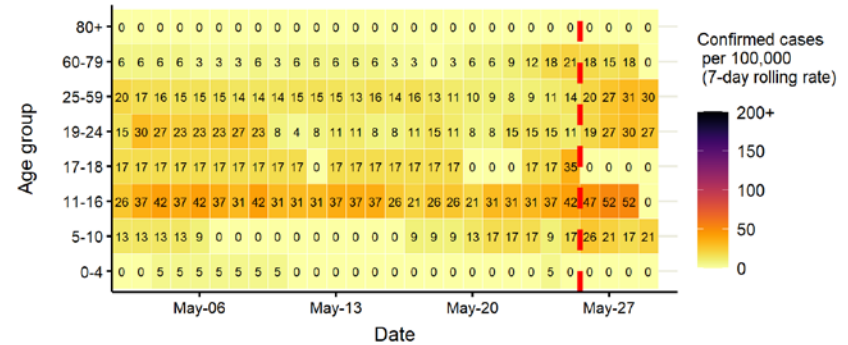
Daily cases from 1/10/2020: 60+ YEARS ONLY **NOTE: different y-axis scale**



4 days with incomplete data
 Pillar 1
 Pillar 2
 Total 7 day moving average (P1 + P2)



Age-stratified case rate heatmap for Southwark: 2 May to 29 May 2021

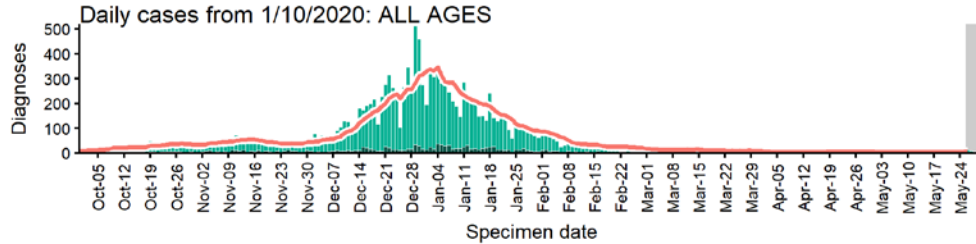


The red dashed line on the heatmaps show the last four days where data may be incomplete due to reporting delays and removal of LFDs with accompanying negative PCR results. Please consider this data provisional.

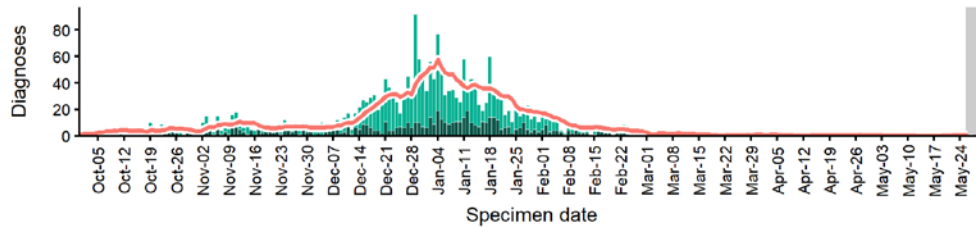
Data from SGSS. Produced by Outbreak Surveillance Team, PHE

Sutton case numbers, testing numbers and positivity, 1 Oct to 29 May 2021

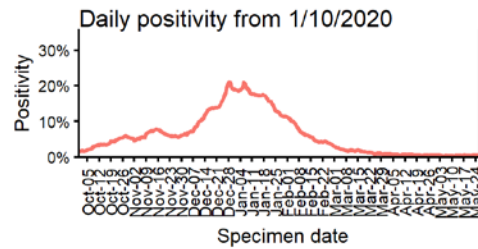
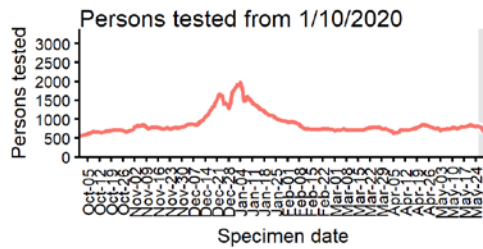
SUTTON
Cases and persons tested up to May 29 2021



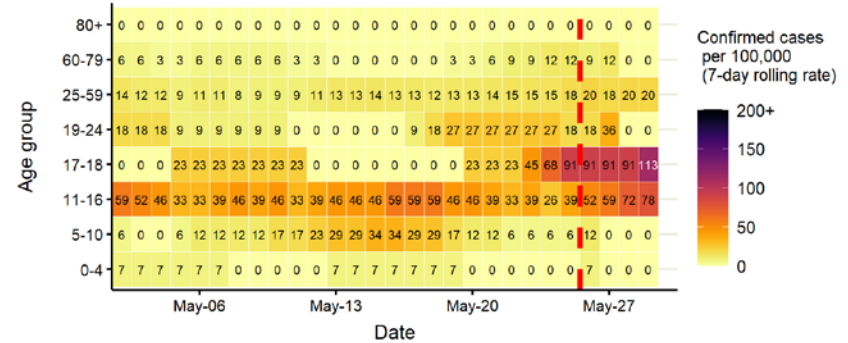
Daily cases from 1/10/2020: 60+ YEARS ONLY **NOTE: different y-axis scale**



4 days with incomplete data
 Pillar 1
 Pillar 2
 Total 7 day moving average (P1 + P2)



Age-stratified case rate heatmap for Sutton: 2 May to 29 May 2021

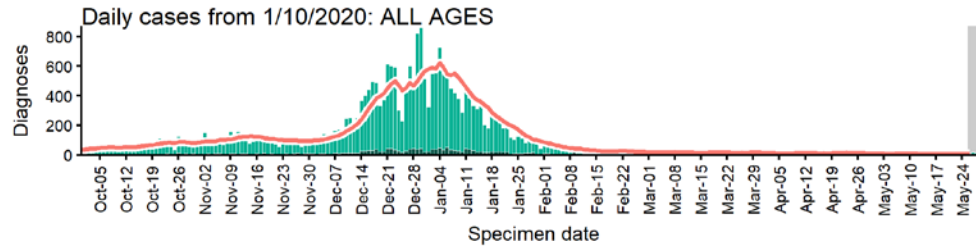


The red dashed line on the heatmaps show the last four days where data may be incomplete due to reporting delays and removal of LFDs with accompanying negative PCR results. Please consider this data provisional.

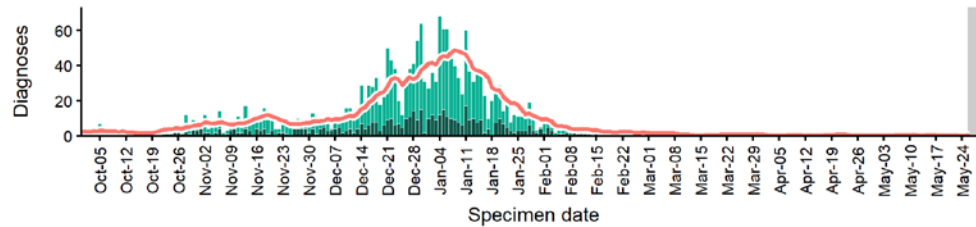
Data from SGSS. Produced by Outbreak Surveillance Team, PHE

Tower Hamlets case numbers, testing numbers and positivity, 1 Oct to 29 May 2021

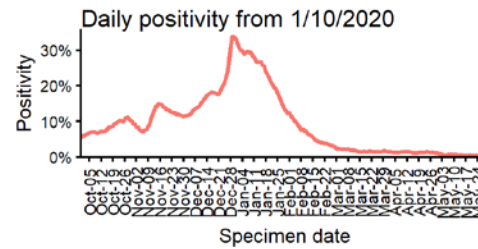
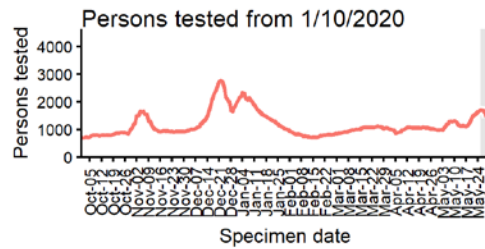
TOWER HAMLETS Cases and persons tested up to May 29 2021



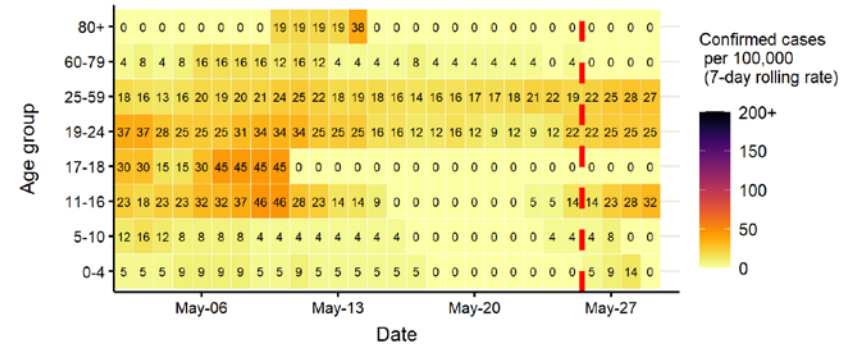
Daily cases from 1/10/2020: 60+ YEARS ONLY **NOTE: different y-axis scale**



4 days with incomplete data
 Pillar 1
 Pillar 2
 Total 7 day moving average (P1 + P2)



Age-stratified case rate heatmap for Tower Hamlets: 2 May to 29 May 2021

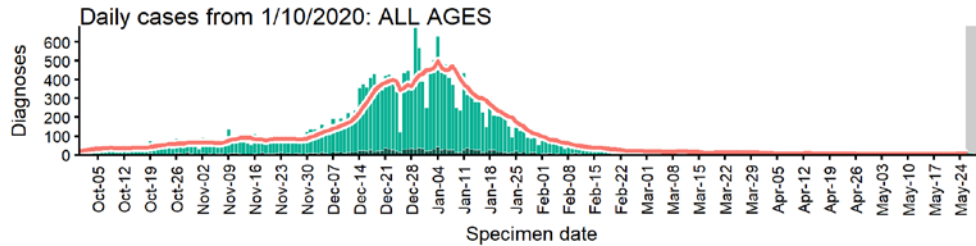


The red dashed line on the heatmaps show the last four days where data may be incomplete due to reporting delays and removal of LFDs with accompanying negative PCR results. Please consider this data provisional.

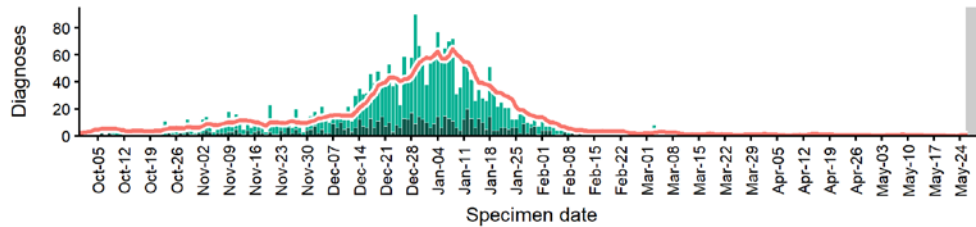
Data from SGSS. Produced by Outbreak Surveillance Team, PHE

Waltham Forest case numbers, testing numbers and positivity, 1 Oct to 29 May 2021

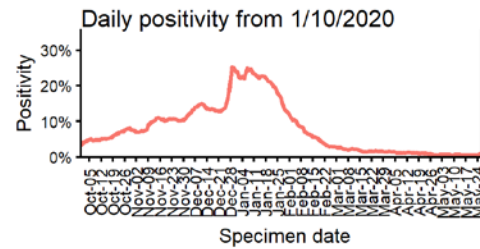
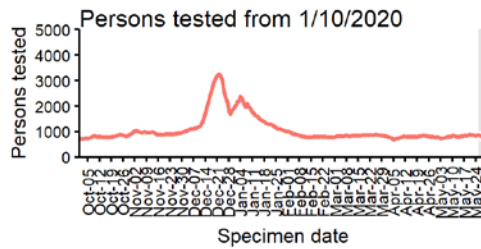
WALTHAM FOREST Cases and persons tested up to May 29 2021



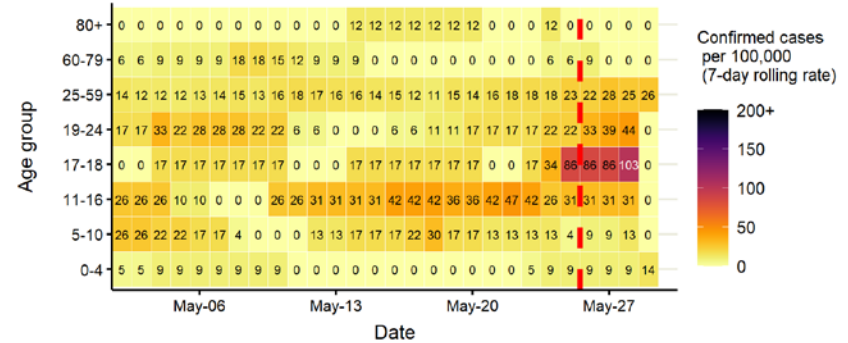
Daily cases from 1/10/2020: 60+ YEARS ONLY **NOTE: different y-axis scale**



4 days with incomplete data
 Pillar 1
 Pillar 2
 Total 7 day moving average (P1 + P2)



Age-stratified case rate heatmap for Waltham Forest: 2 May to 29 May 2021

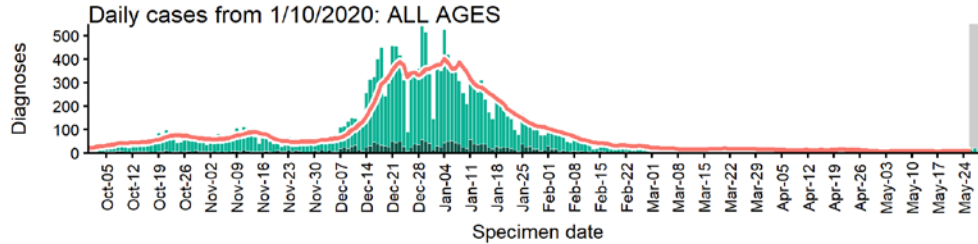


The red dashed line on the heatmaps show the last four days where data may be incomplete due to reporting delays and removal of LFDs with accompanying negative PCR results. Please consider this data provisional.

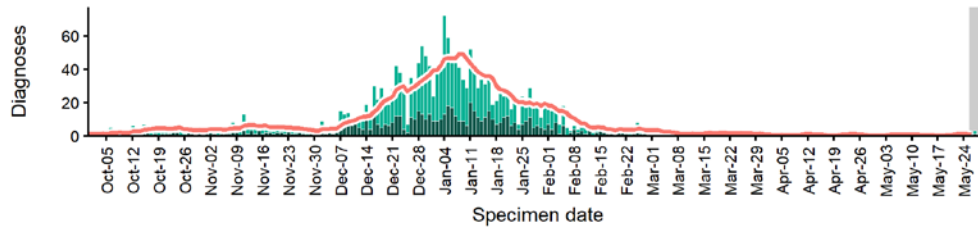
Data from SGSS. Produced by Outbreak Surveillance Team, PHE

Wandsworth case numbers, testing numbers and positivity, 1 Oct to 29 May 2021

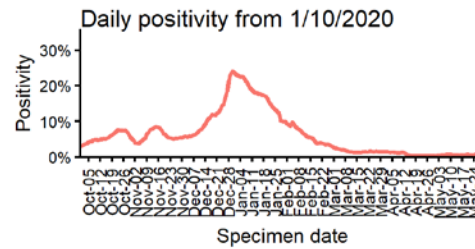
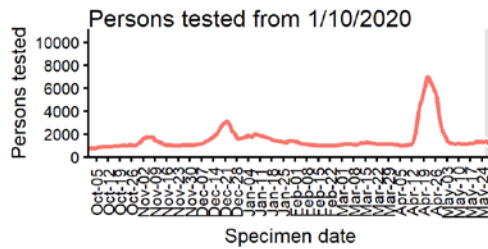
WANDSWORTH
Cases and persons tested up to May 29 2021



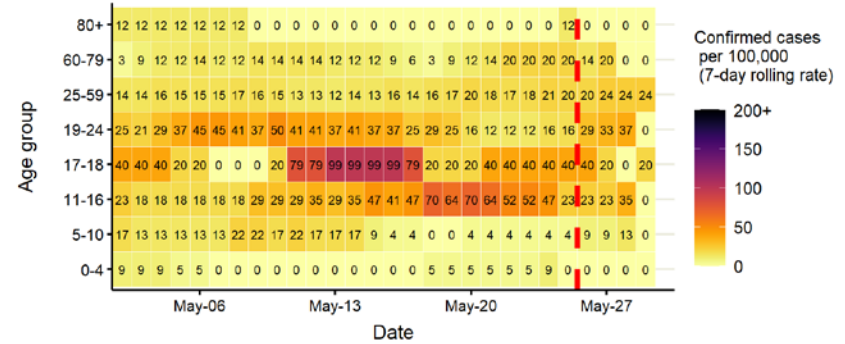
Daily cases from 1/10/2020: 60+ YEARS ONLY **NOTE: different y-axis scale**



4 days with incomplete data
 Pillar 1
 Pillar 2
 Total 7 day moving average (P1 + P2)



Age-stratified case rate heatmap for Wandsworth: 2 May to 29 May 2021

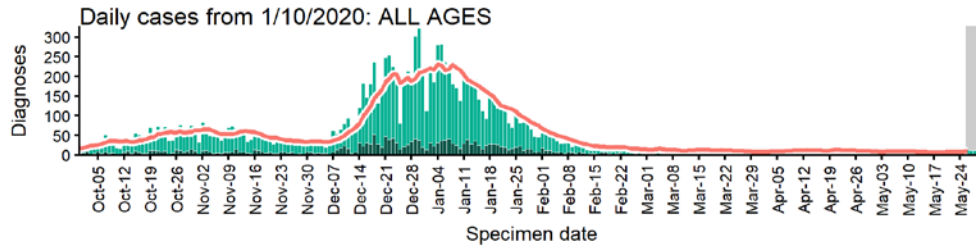


The red dashed line on the heatmaps show the last four days where data may be incomplete due to reporting delays and removal of LFDs with accompanying negative PCR results. Please consider this data provisional.

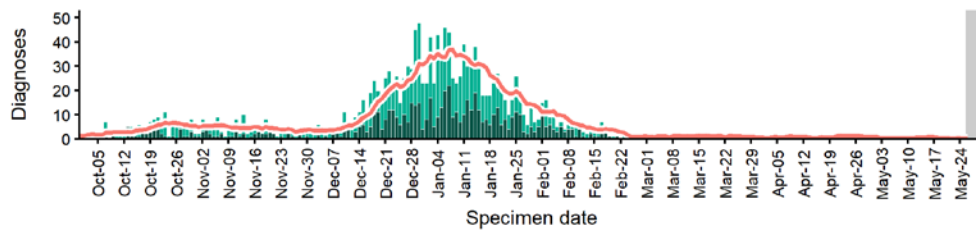
Data from SGSS. Produced by Outbreak Surveillance Team, PHE

Westminster case numbers, testing numbers and positivity, 1 Oct to 29 May 2021

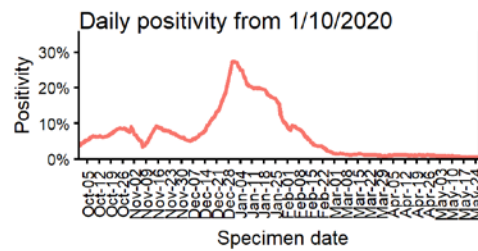
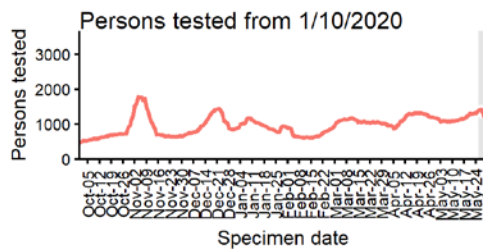
WESTMINSTER Cases and persons tested up to May 29 2021



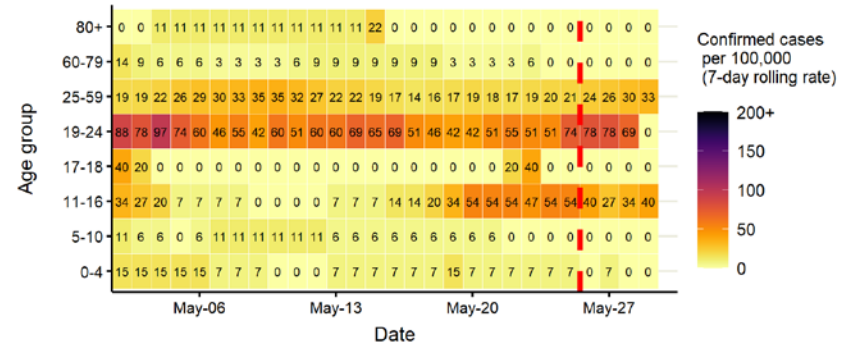
Daily cases from 1/10/2020: 60+ YEARS ONLY **NOTE: different y-axis scale**



4 days with incomplete data
 Pillar 1
 Pillar 2
 Total 7 day moving average (P1 + P2)



Age-stratified case rate heatmap for Westminster: 2 May to 29 May 2021



The red dashed line on the heatmaps show the last four days where data may be incomplete due to reporting delays and removal of LFDs with accompanying negative PCR results. Please consider this data provisional.

Data from SGSS. Produced by Outbreak Surveillance Team, PHE

© Crown copyright 2020

www.gov.uk/dhsc

This publication is licensed under the terms of the Open Government Licence v3.0 except where otherwise stated. To view this licence, visit nationalarchives.gov.uk/doc/open-government-licence/version/3

Where we have identified any third party copyright information you will need to obtain permission from the copyright holders concerned.

OGL