

## **Maps of the Successful English Freeport Bids**

### **Purpose:**

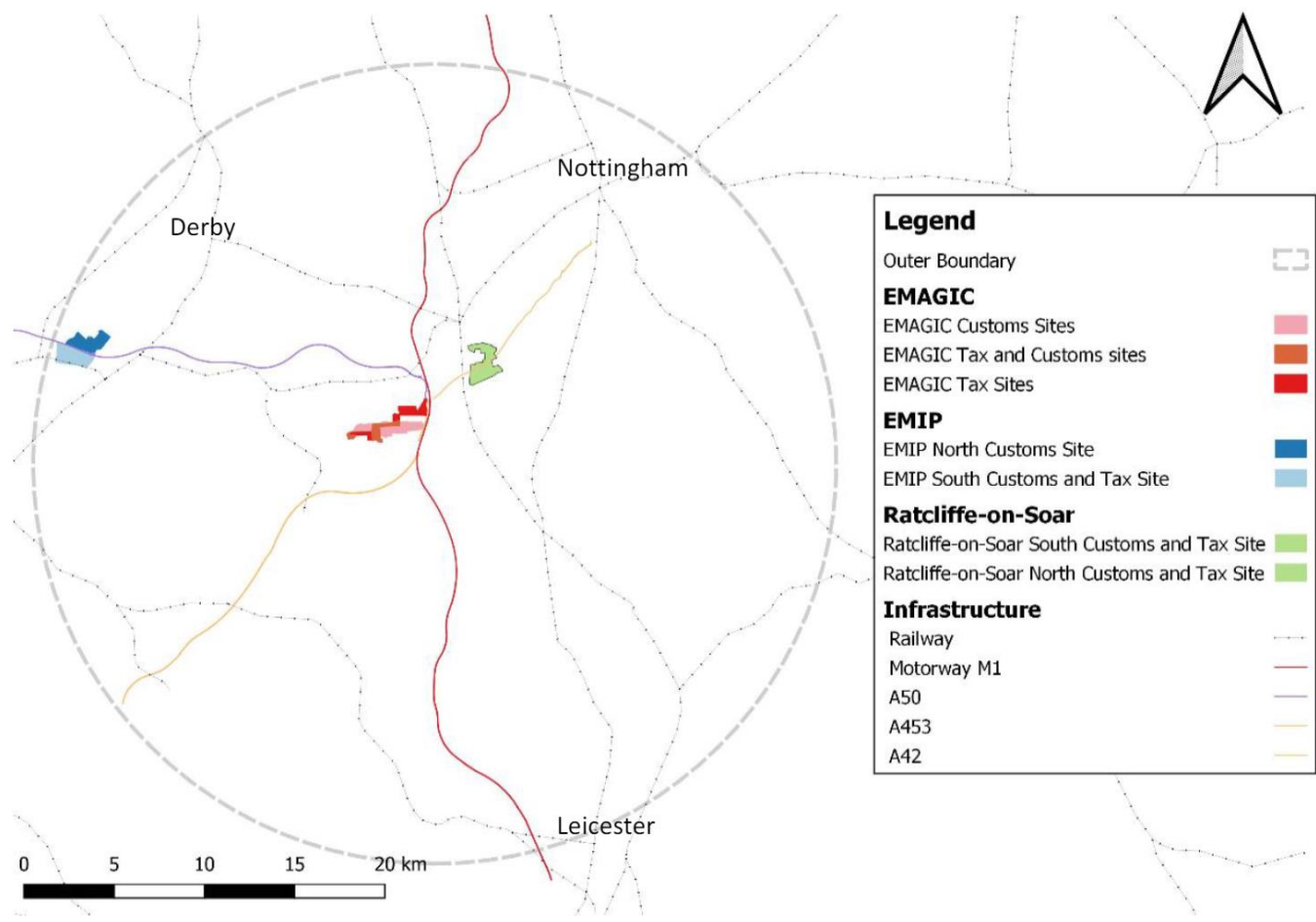
The maps below have been provided by each of the successful bidders in the English Freeports Competition to demonstrate the proposed outer boundary/sites of their proposed Freeport area. These locations will now move to the next stage of Freeports designation and remain subject to approval.

Note: Successful bidders' proposals are provisional and may be subject to change.

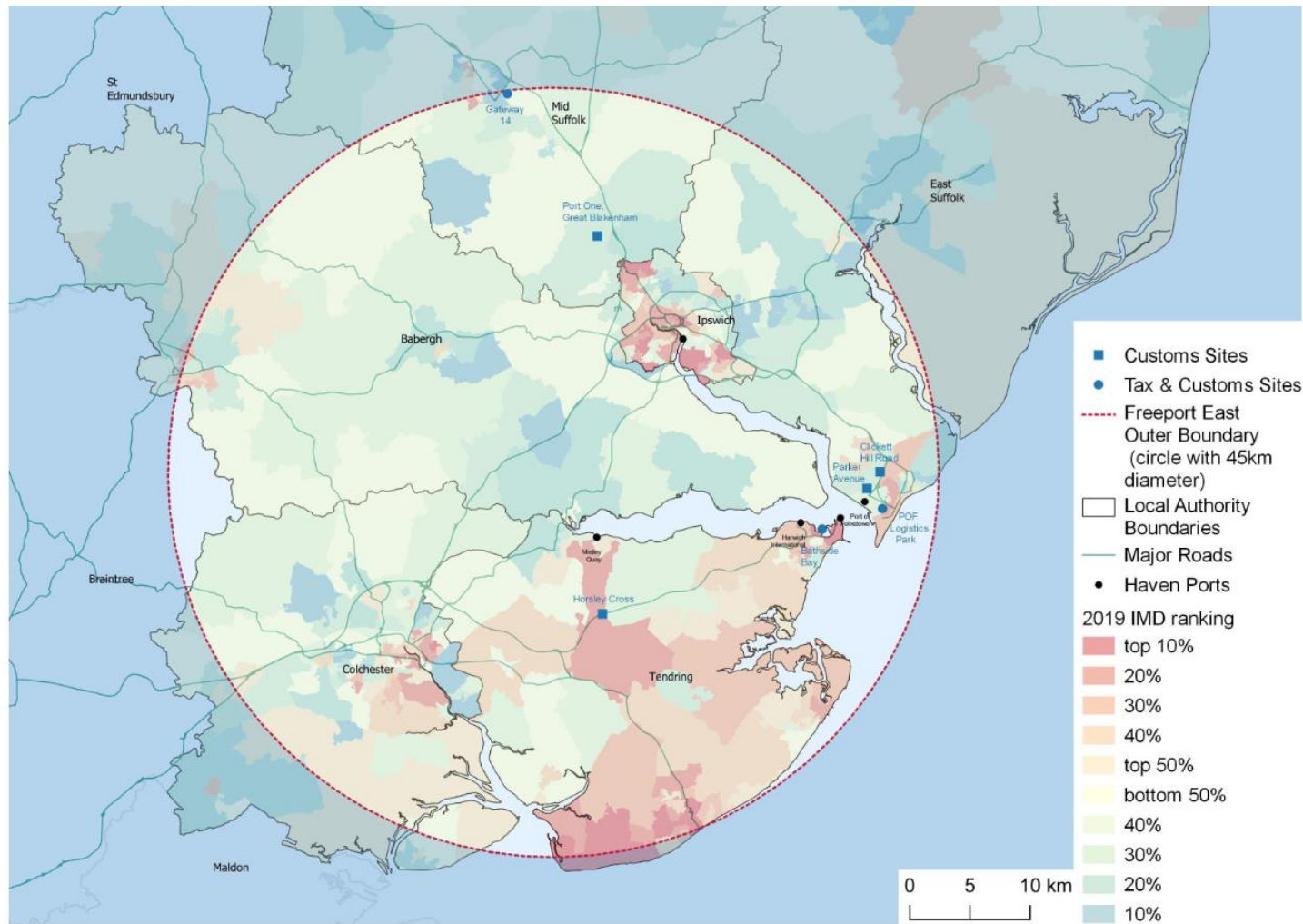
### **The successful locations, as announced at Budget, were:**

- East Midlands Airport
- Felixstowe and Harwich (referred to below as Freeport East)
- Humber
- Liverpool City Region
- Plymouth
- Solent
- Thames
- Teesside

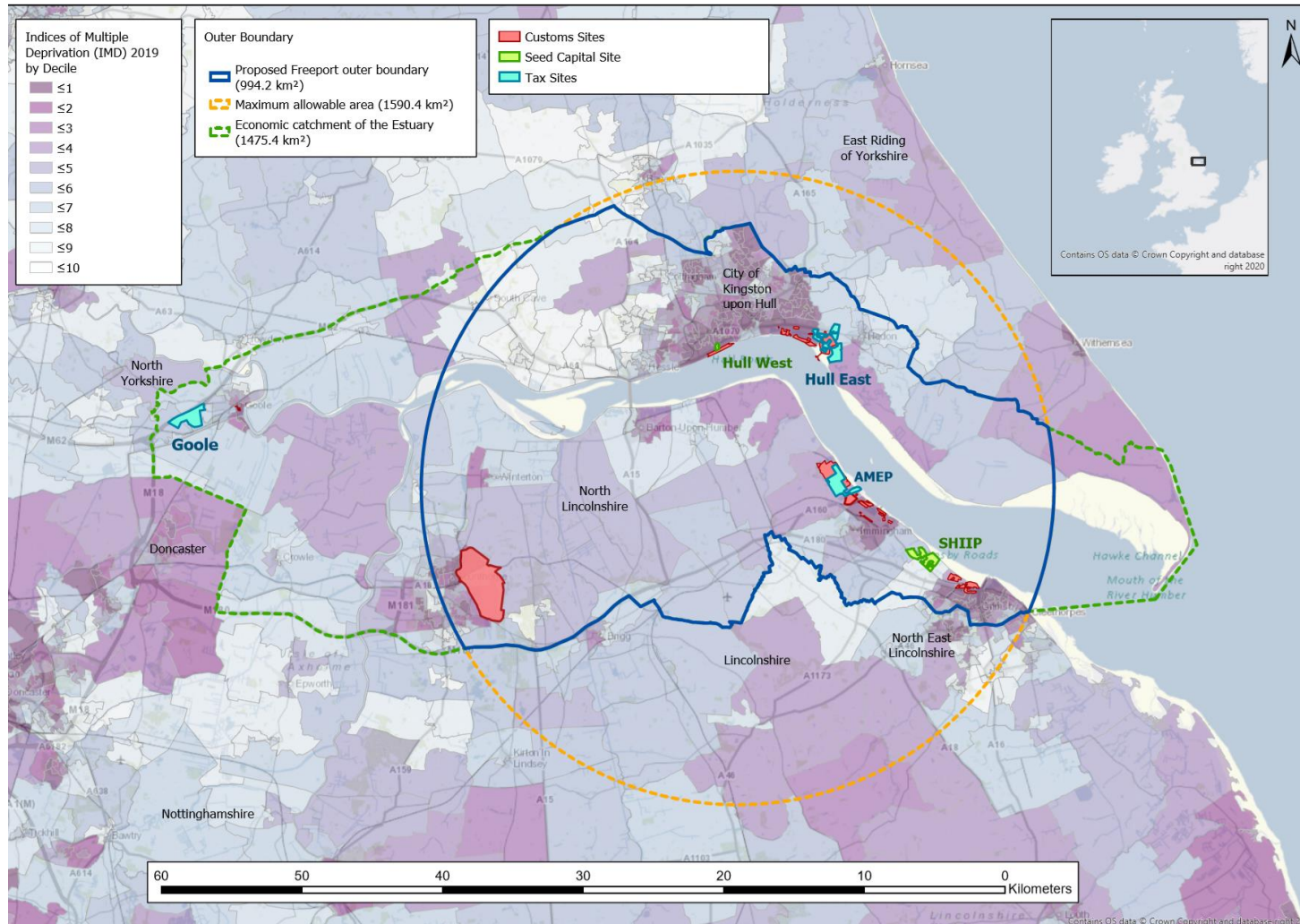
East Midlands Freeport



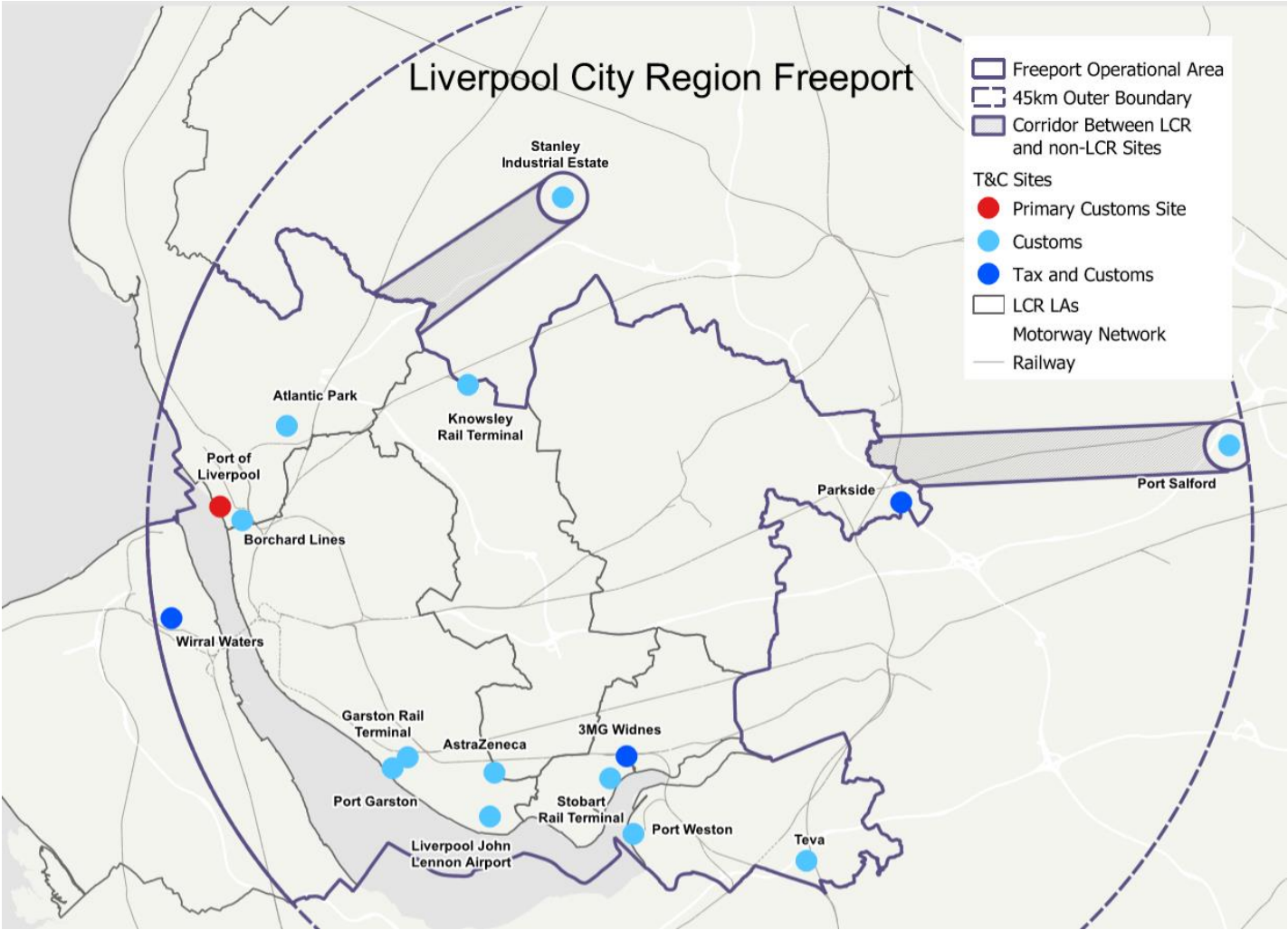
Freeport East



## Humber Freeport

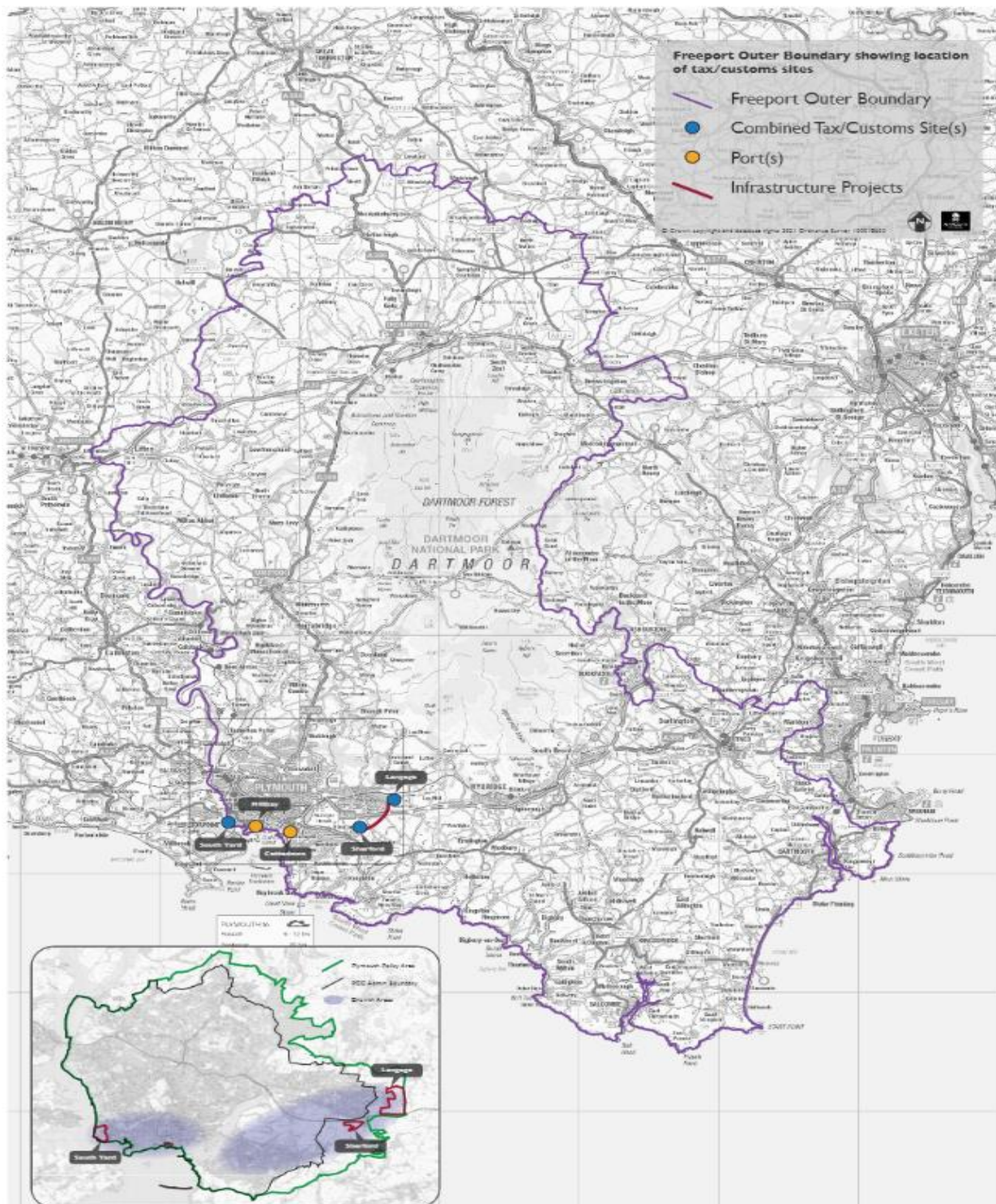


Liverpool City Region Freeport

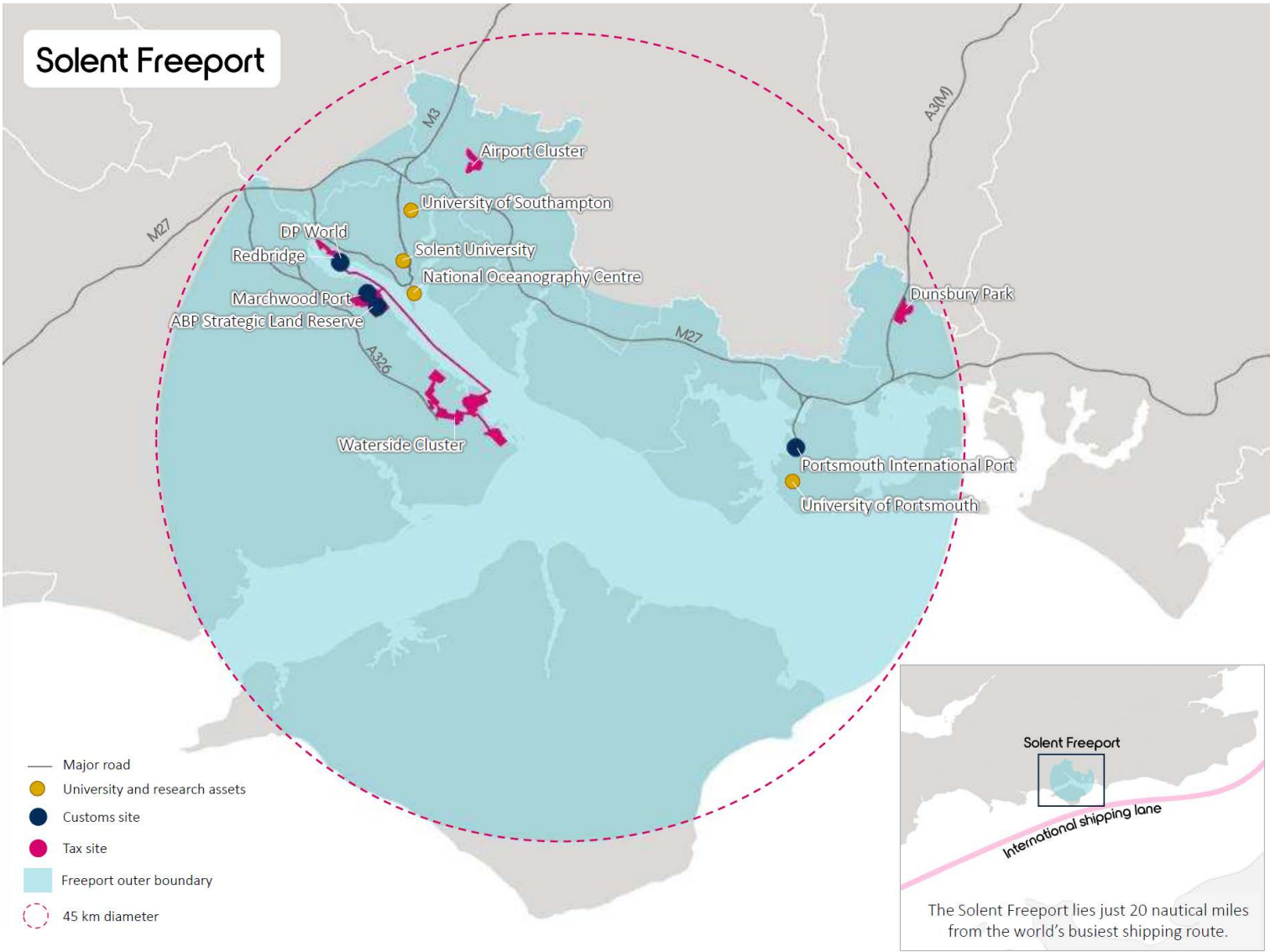




## Plymouth Freeport

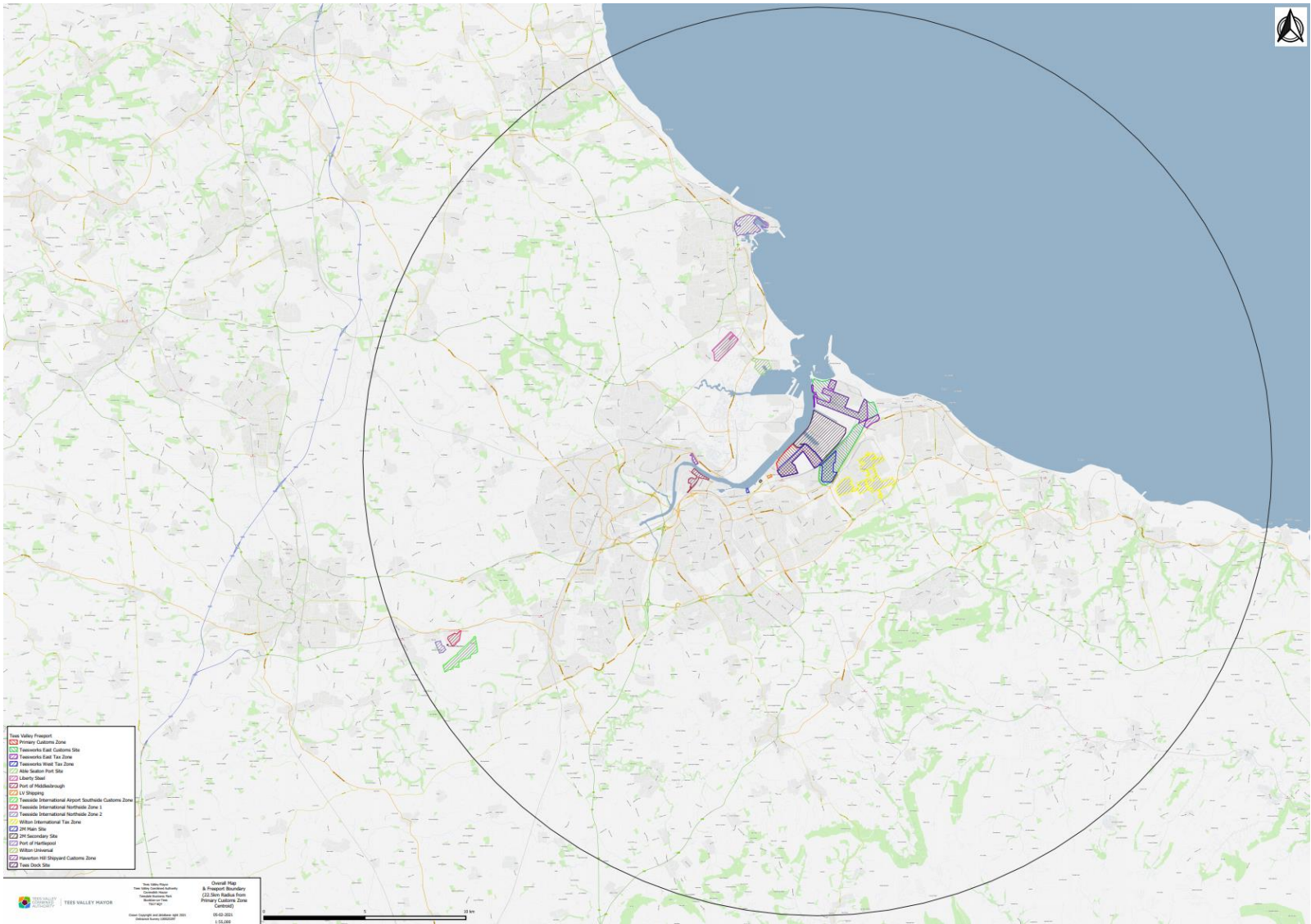


Solent Freeport





Teesside Freeport





Thames Freeport

