

Legend

- 3.0m two way cart traffic
- 2.2m one way cart traffic
- 4m wide pump house access
- 3.5m Wide Maintenance Bridge
- 2.2m Wide Pedestrian Bridge

GENERAL NOTES

- 01.
- 02.
- 03.
- 04.
- 05.

REVISIONS

REV	DATE	DESCRIPTION	REV BY	CHK BY

KEY PLAN

CONSULTANT



LEAD CONSULTANT

CLIENT



ISSUED FOR

Planning Direction

PROJECT

Ingestre Park Golf Club

DRAWING TITLE

Cart Path Layout

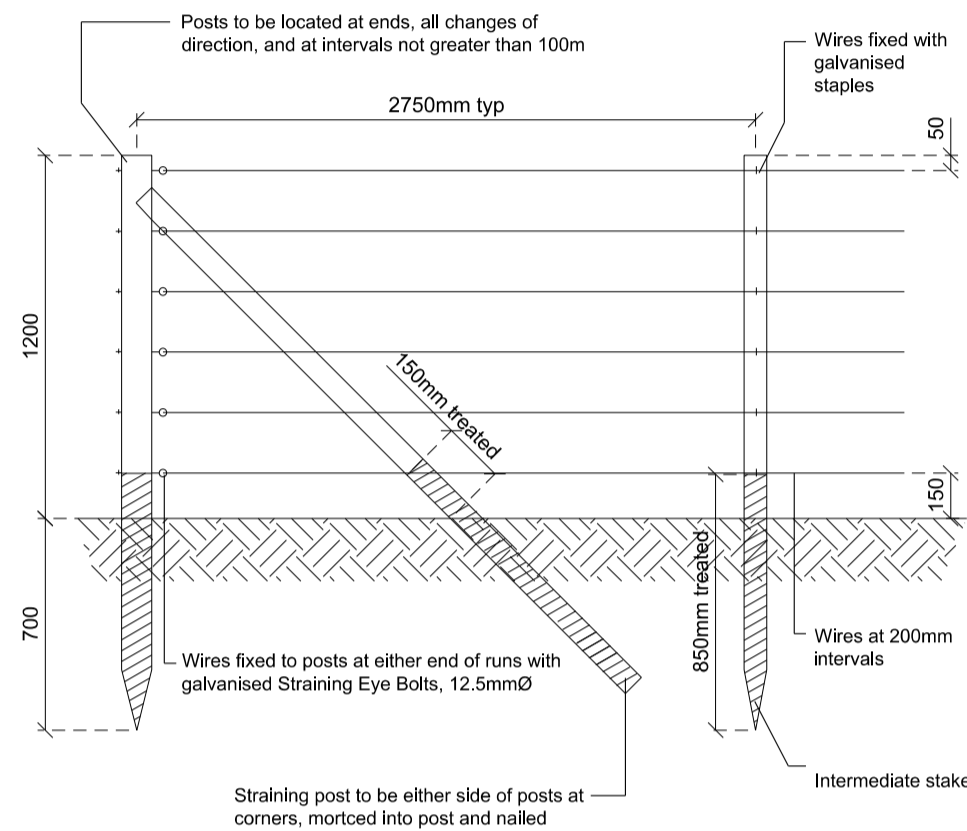
Drawn	JH	Checked	AC	Approved	RH	
Date	11/12/2020	Sheet Size	A1	Scale	1:2500 @A1	
Drawing No.	G982 NC 715 CART PATH LAYOUT				Rev.	--

CAD File No. G982 NC 715 CART PATH LAYOUT	Consultant Project No.
--	------------------------

This drawing, the designs and details shown are the copyright of International Design Group and shall not be copied or reproduced in any form without their written consent.
© INTERNATIONAL DESIGN GROUP

NOTES

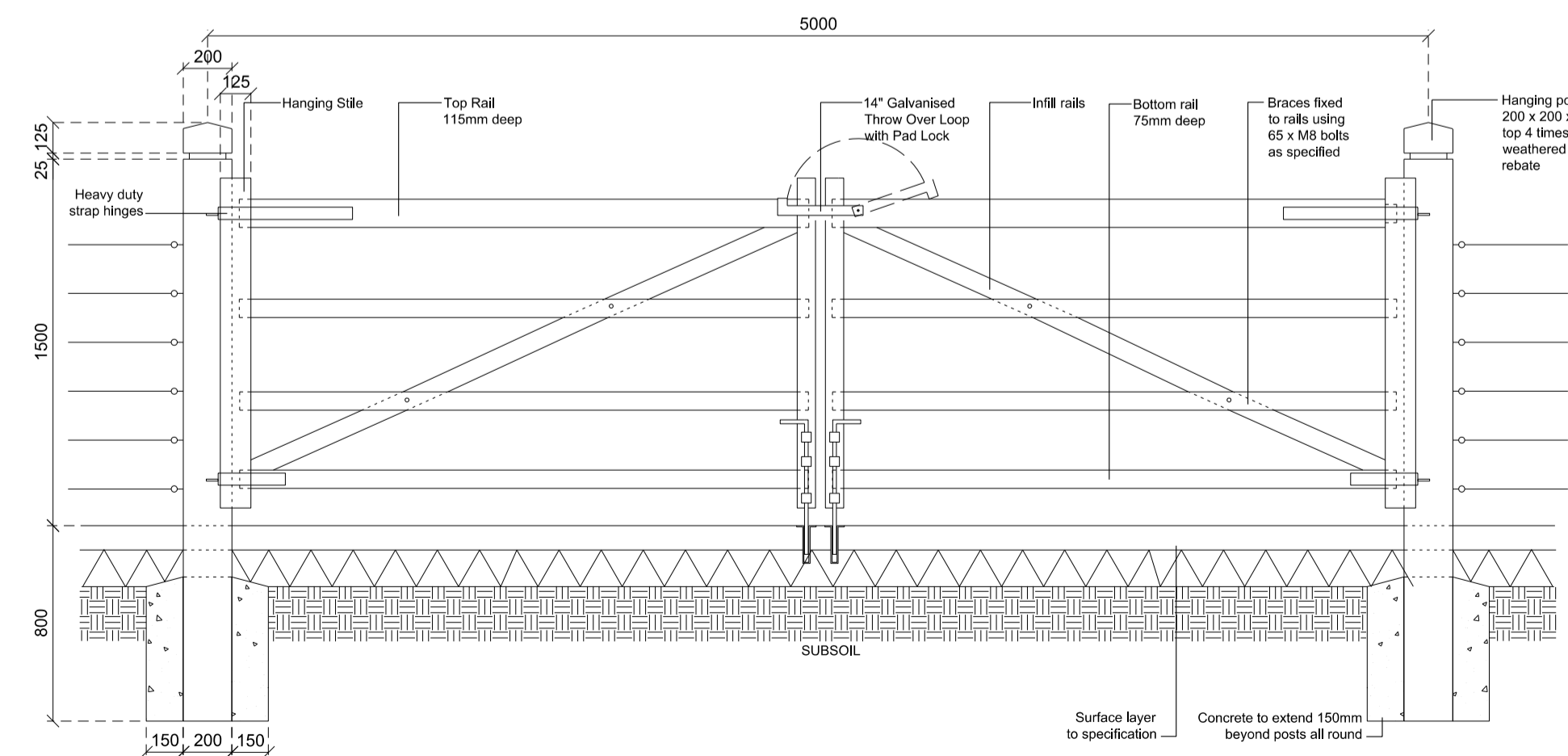
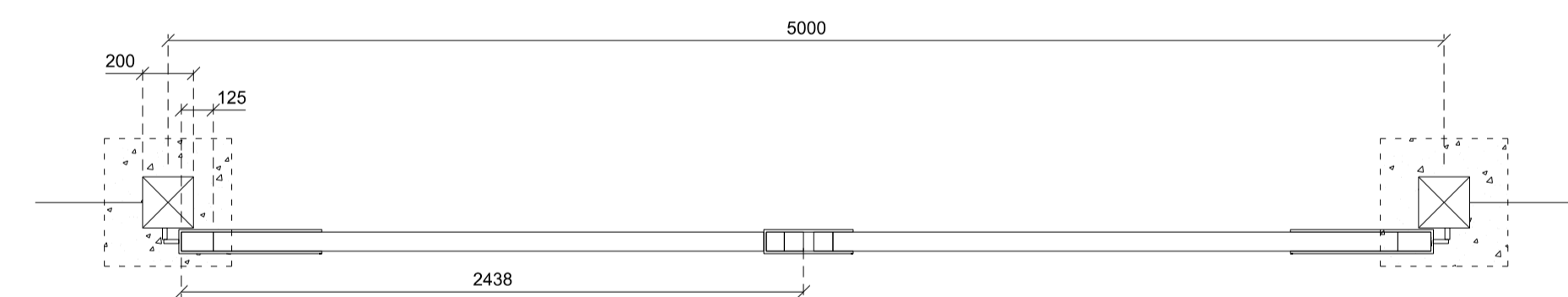
All timber is to be sweet chestnut or larch, peeled.
 Posts are to be 100mm diameter, 1.9m long, and pointed. The pointed end is to be treated to 850mm with an approved timber preservative.
 Stakes are to be 100mm diameter, 1.9m long, and pointed. The pointed end is to be treated to 850mm with an approved timber preservative.
 Straining posts are to be 75mm diameter, approx 1.5m long, and treated with an approved timber preservative to 150mm above ground level.
 Wires are to be fixed by means of galvanised Straining Eye Bolts through posts at beginnings and ends of runs, and by being fixed to intermediate stakes with galvanised staples.



SECTION/ELEVATION

POST / WIRE FENCE DETAIL

PLAN

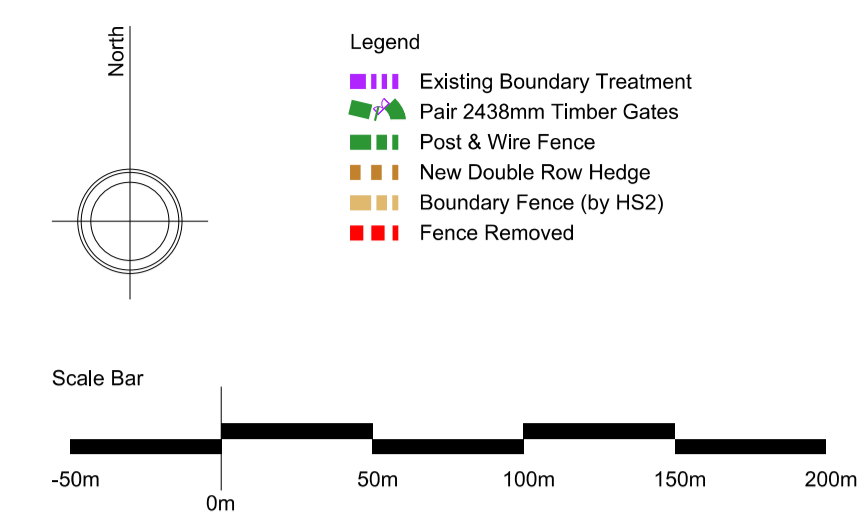
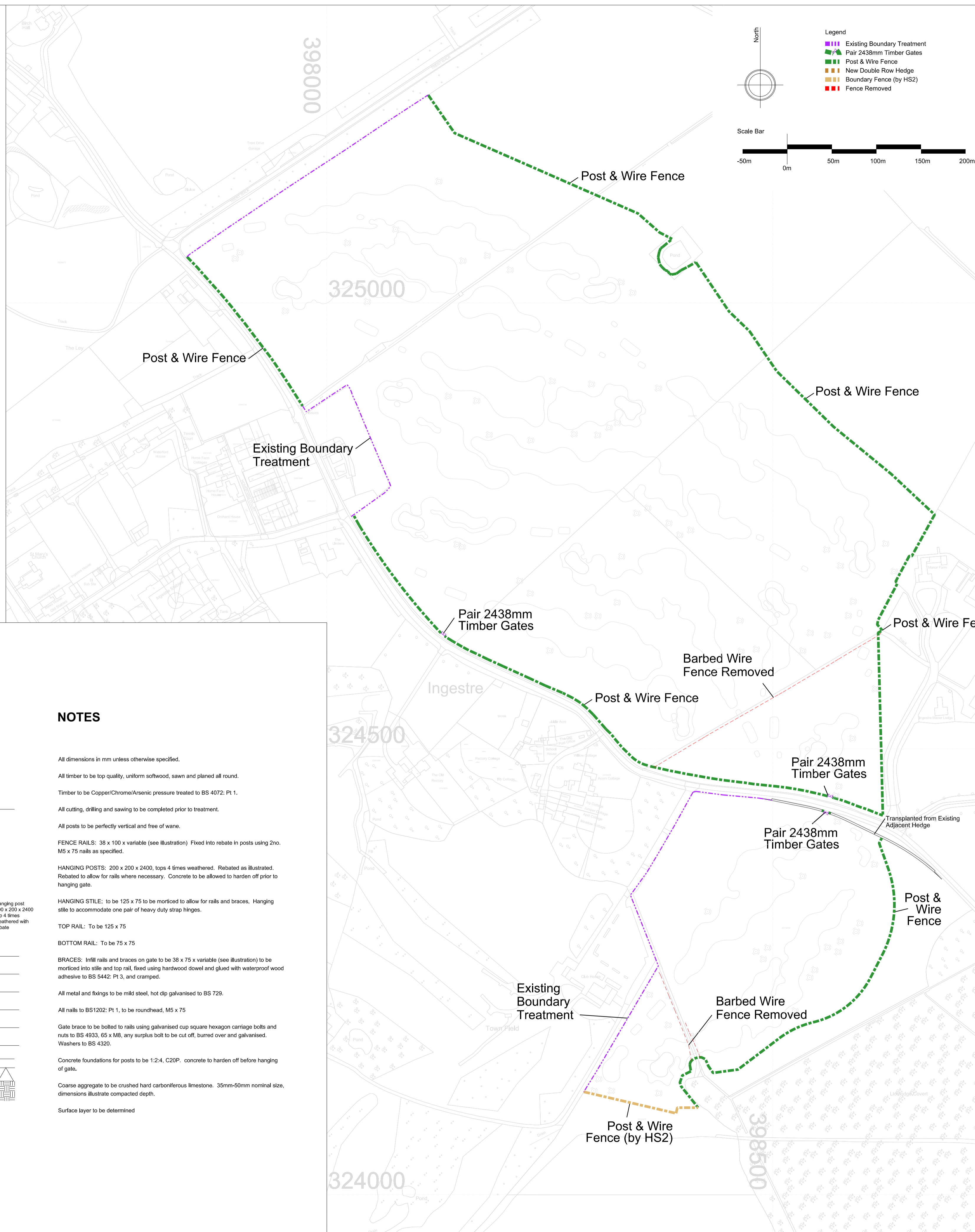


SECTION

GATE DETAIL

NOTES

All dimensions in mm unless otherwise specified.
 All timber to be top quality, uniform softwood, sawn and planed all round.
 Timber to be Copper/Chromel/Arsenic pressure treated to BS 4072: Pt 1.
 All cutting, drilling and sawing to be completed prior to treatment.
 All posts to be perfectly vertical and free of ware.
 FENCE RAILS: 38 x 100 x variable (see illustration) Fixed into rebate in posts using 2no. M5 x 75 nails as specified.
 HANGING POSTS: 200 x 200 x 2400, tops 4 times weathered. Rebated as illustrated. Rebated to allow for rails where necessary. Concrete to be allowed to harden off prior to hanging gate.
 HANGING STILE: to be 125 x 75 to be morticed to allow for rails and braces. Hanging stile to accommodate one pair of heavy duty strap hinges.
 TOP RAIL: To be 125 x 75
 BOTTOM RAIL: To be 75 x 75
 BRACES: Infill rails and braces on gate to be 38 x 75 x variable (see illustration) to be morticed into stile and top rail, fixed using hardwood dowel and glued with waterproof wood adhesive to BS 5442: Pt 3, and cramped.
 All metal and fixings to be mild steel, hot dip galvanised to BS 729.
 All nails to BS1202: Pt 1, to be roundhead, M5 x 75
 Gate brace to be bolted to rails using galvanised cup square hexagon carriage bolts and nuts to BS 4953, 65 x M8, any surplus bolt to be cut off, burned over and galvanised. Washers to BS 4320.
 Concrete foundations for posts to be 1:2:4, C20P. concrete to harden off before hanging of gate.
 Coarse aggregate to be crushed hard carboniferous limestone. 35mm-50mm nominal size, dimensions illustrate compacted depth.
 Surface layer to be determined



GENERAL NOTES

- 01.
- 02.
- 03.
- 04.
- 05.

REVISIONS

REV	DATE	DESCRIPTION	REV BY	CHK BY

KEY PLAN

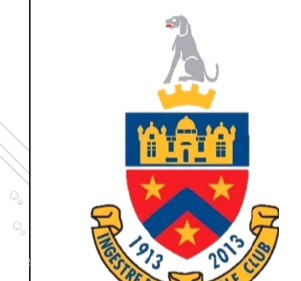


CONSULTANT



LEAD CONSULTANT

CLIENT



ISSUED FOR

Planning Direction

PROJECT

Ingestre Park Golf Club

DRAWING TITLE

Fence / Gates Plan

Drawn	JH	Checked	AC	Approved	RH
Date	30/07/2020	Sheet Size	A1	Scale	1:2500 @A1
Drawing No.	G982 NC 716 FENCE & GATE PLANS WITH ELEVATIONS & DETAILS			Rev.	--

CAD File No. G982 NC 716 FENCE & GATE PLANS WITH ELEVATIONS & DETAILS
 Consultant Project No. G982 NC 716 FENCE & GATE PLANS WITH ELEVATIONS & DETAILS

This drawing, the designs and details shown are the copyright of International Design Group and shall not be copied or reproduced in any form without their written consent.