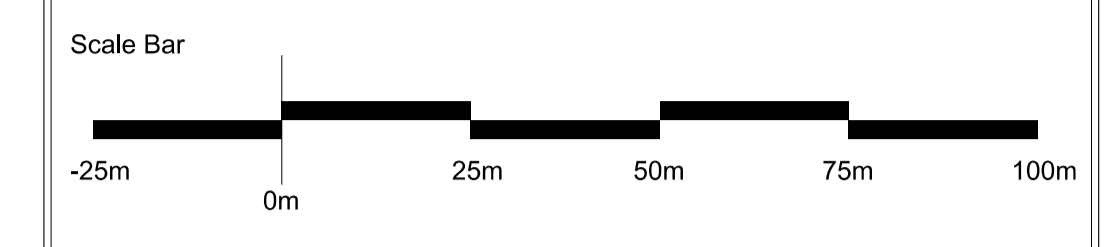


Legend

- Retained Vegetation
- Removed Vegetation
- Vegetation Reduced to 1.0m above ditch base
- New Location of the Transplanted Hedge
- Ecological Buffer Zone
- Understorey Grassing
- Long Rough Grass
- New Hedgerow Native Mix



Note: See G982 NC 711-4 for Planting Schedule and Abbreviation Definitions

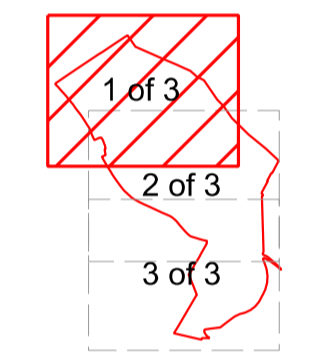
GENERAL NOTES

- 01.
- 02.
- 03.
- 04.
- 05.

REVISIONS

REV	DATE	DESCRIPTION	REV BY	CHK BY
D	25/02/2021	HS2 Feedback	SS	JH
C	10/02/2021	Spalls replaced with Ebbes. Water Solder removed.	SS	JH
B	18/12/2020	Whp area adjacent to existing hole 4 shown. (previously missed on masterplan although shown on tree planting plan)	SS	JH
A	15/12/2020	Tree density reduced to 2m spacing following ecologists advice. Tree protection and seed mixes amended.	SS	JH

KEY PLAN



CONSULTANT



LEAD CONSULTANT

CLIENT



ISSUED FOR

Planning Direction

PROJECT

Ingestre Park Golf Club

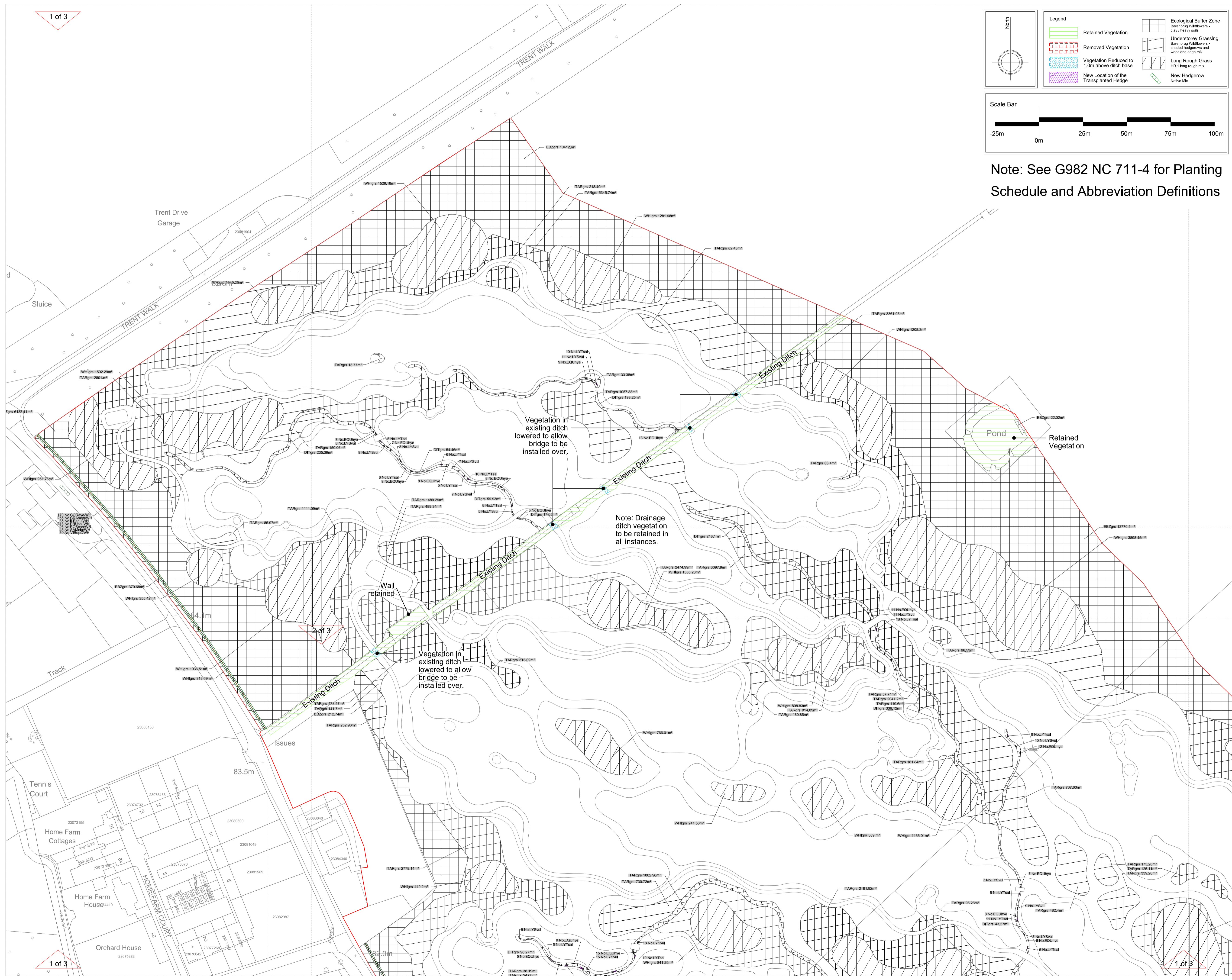
DRAWING TITLE

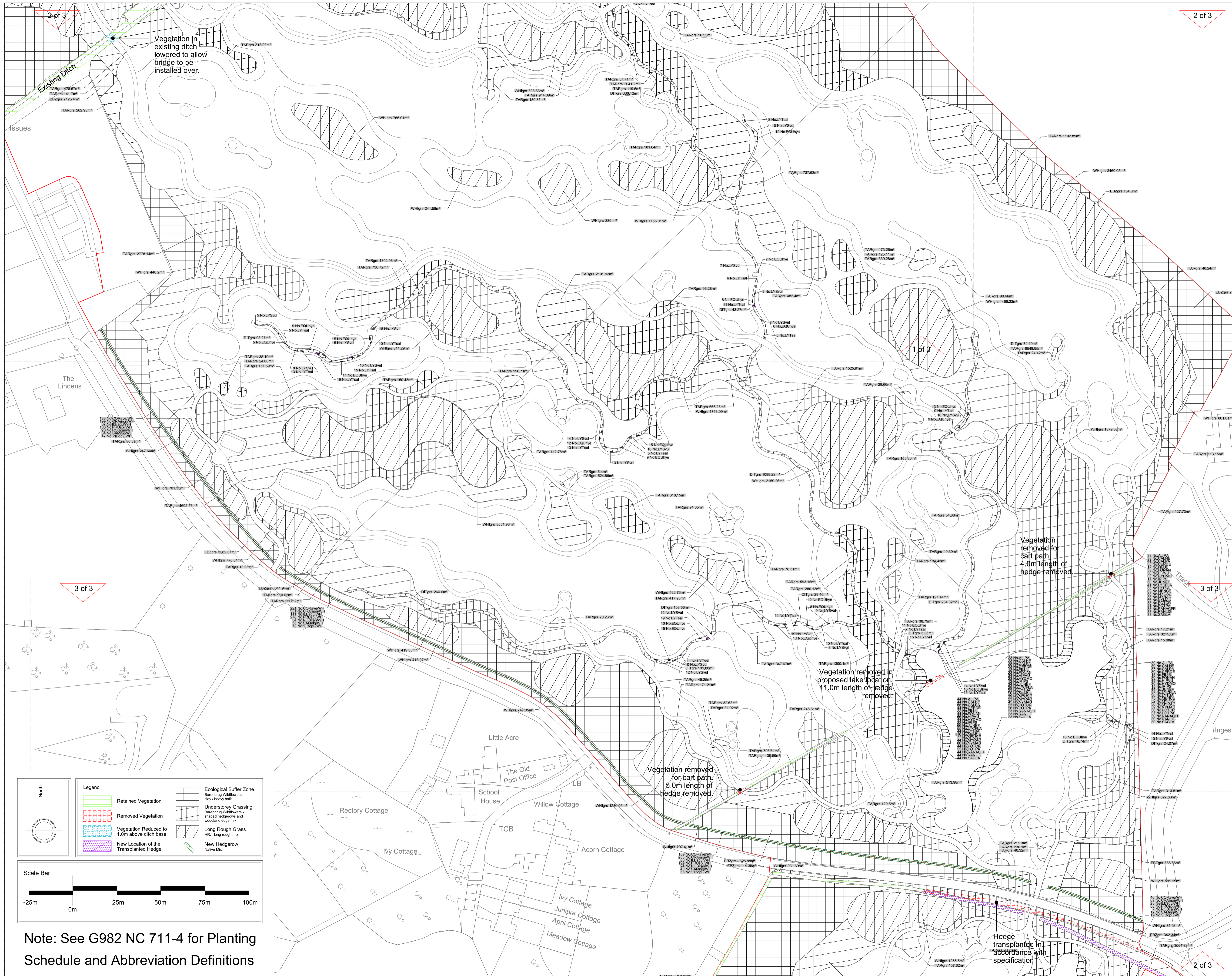
Vegetation Removal Hedge Transplanting and Planting Plan 1 of 3

Drawn	SS	Checked	JH	Approved	RH
Date	10/12/2020	Sheet Size	A1	Scale	1:1000 @A1
Drawing No.	G982 NC 711-1 VEGETATION REMOVAL HEDGE TRANSPLANTING AND PLANTING PLAN 1 OF 3			Rev.	D

CAD File No. Consultant Project No.

This drawing, the designs and details shown are the copyright of International Design Group and shall not be copied or reproduced in any form without their written consent.





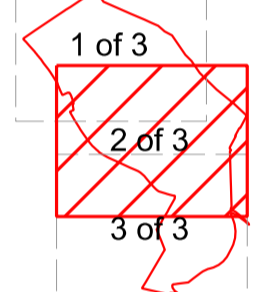
GENERAL NOTES

- 01.
- 02.
- 03.
- 04.
- 05.

REVISIONS

REV	DATE	DESCRIPTION	REV BY	CHK BY
D	25/02/2021	HS2 Feedback	SS	JH
C	10/02/2021	Shrub replaced with Elder. Water Solder removed.	SS	JH
B	18/12/2020	Whip area adjacent to existing hole # 4 added. (previously missed on masterplan although shown on tree planting plan)	SS	JH
A	15/12/2020	Tree density reduced to 2m spacing following ecologists advice. Tree protection and seed mixes amended.	SS	JH

KEY PLAN



CONSULTANT



LEAD CONSULTANT

CLIENT



ISSUED FOR

Planning Direction

PROJECT

Ingestre Park Golf Club

DRAWING TITLE

Vegetation Removal Hedge Transplanting and Planting Plan 2 of 3

Drawn	SS	Checked	JH	Approved	RH
Date	10/12/2020	Sheet Size	A1	Scale	1:1000 @A1
Drawing No.	G982 NC 711-2 VEGETATION REMOVAL HEDGE TRANSPLANTING AND PLANTING PLAN 2 OF 3			Rev.	D

CAD File No. Consultant Project No.
 G982 NC 711-2 VEGETATION REMOVAL HEDGE TRANSPLANTING AND PLANTING PLAN 2 OF 3
 This drawing, the designs and details shown are the copyright of International Design Group and shall not be copied or reproduced in any form without their written consent.
 © INTERNATIONAL DESIGN GROUP

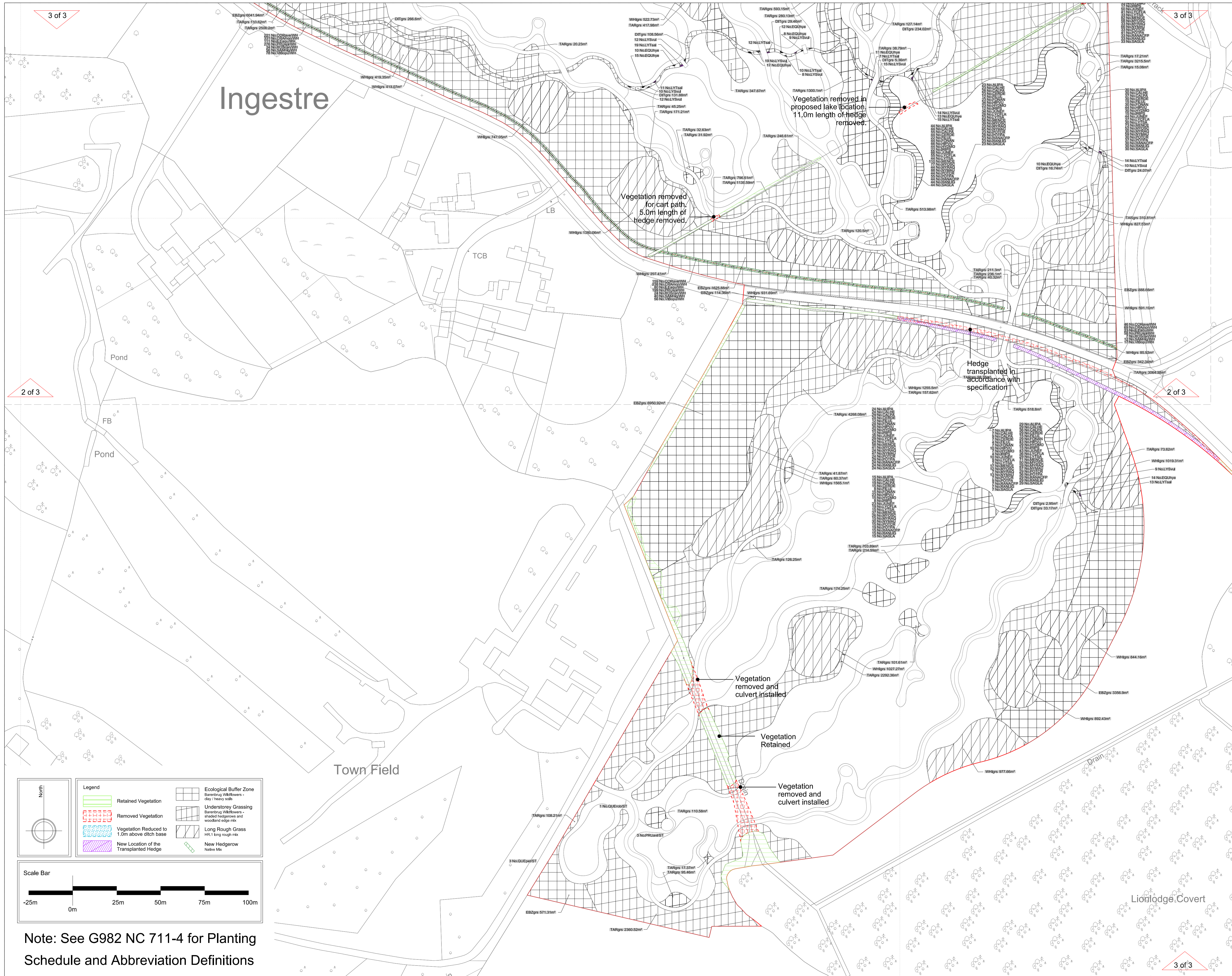
Legend

- Retained Vegetation
- Removed Vegetation
- Vegetation Reduced to 1.0m above ditch base
- New Location of the Transplanted Hedge
- Ecological Buffer Zone Barening Willows - clay / heavy soil
- Understorey Grassing Barening Willows - shaded hedgerows and wooded edge mix
- Long Rough Grass HR, 1 long rough mix
- New Hedgerow Native Mix

Scale Bar

0m 25m 50m 75m 100m

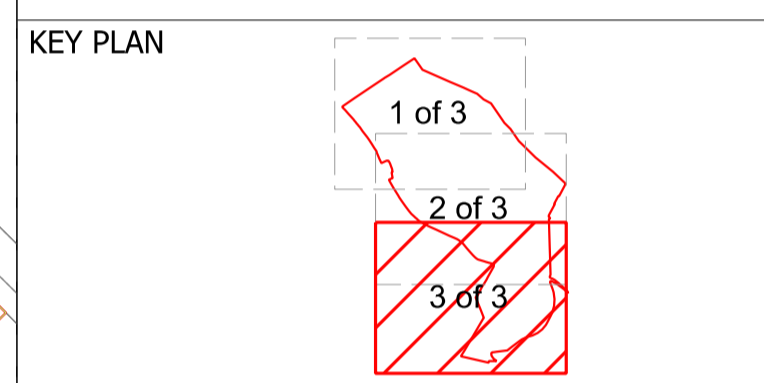
Note: See G982 NC 711-4 for Planting Schedule and Abbreviation Definitions



- GENERAL NOTES
- 01.
 - 02.
 - 03.
 - 04.
 - 05.

REVISIONS

REV	DATE	DESCRIPTION	REV BY	CHK BY
D	25/02/2021	HS2 Feedback	SS	JH
C	10/02/2021	Signals replaced with Ebbw Water Soldier removed	SS	JH
B	18/12/2020	Whgs area adjacent to existing hole 4 shown, (previously missed on masterplan although shown on tree planting plan)	SS	JH
A	15/12/2020	Tree density reduced to 2m spacing following ecologists advice. Tree protection and seed mixes amended.	SS	JH



CONSULTANT

LEAD CONSULTANT

CLIENT

ISSUED FOR

Planning Direction

PROJECT

Ingestre Park Golf Club

DRAWING TITLE

Vegetation Removal Hedge Transplanting and Planting Plan 3 of 3

Drawn	SS	Checked	JH	Approved	RH
Date	10/12/2020	Sheet Size	A1	Scale	1:1000 @A1
Drawing No.	G982 NC 711-3 VEGETATION REMOVAL HEDGE TRANSPLANTING AND PLANTING PLAN 3 OF 3			Rev.	D
CAD File No.	G982 NC 711-3 VEGETATION REMOVAL HEDGE TRANSPLANTING AND PLANTING PLAN 3 OF 3			Consultant Project No.	

This drawing, the designs and details shown are the copyright of International Design Group and shall not be copied or reproduced in any form without their written consent.

© INTERNATIONAL DESIGN GROUP

Legend

- Retained Vegetation
- Removed Vegetation
- Vegetation Reduced to 1.0m above ditch base
- New Location of the Transplanted Hedge
- Ecological Buffer Zone Barebrug Willows - clay/heavy soil
- Understorey Grassing Barebrug Willows - shaded hedgerows and wooded edge mix
- Long Rough Grass HR, 1 long rough mix
- New Hedgerow Native Mix

Scale Bar

0m 25m 50m 75m 100m

Note: See G982 NC 711-4 for Planting Schedule and Abbreviation Definitions

PA 1 Planting Schedule

Hedges

Plant Code	Botanical Name	Common Name	Height	Density	Number
CORave/WH	Corylus avellana	Hazel	1.0-1.2m	0.5Ctr Double Staggered at 0.5m offset	729 No.
CRAmon/WH	Crataegus monogyna	Common Hawthorn	1.0-1.2m	0.5Ctr Double Staggered at 0.5m offset	1092 No.
ILEagu/WH	Ilex aquifolium	Common Holly	1.0-1.2m	0.5Ctr Double Staggered at 0.5m offset	366 No.
PRUspi/WH	Prunus spinosa	Blackthorn	1.0-1.2m	0.5Ctr Double Staggered at 0.5m offset	912 No.
ROScan/WH	Rosa canina	Dog Rose	1.0-1.2m	0.5Ctr Double Staggered at 0.5m offset	111 No.
SAMnig/WH	Sambucus nigra	Elder	1.0-1.2m	0.5Ctr Double Staggered at 0.5m offset	185 No.
VIBopu/WH	Viburnum opulus	Guelder rose	1.0-1.2m	0.5Ctr Double Staggered at 0.5m offset	258 No.
					Total :3653 No.

Perennials

Plant Code	Botanical Name	Common Name	Container Size	Spacing	Number
EQUhye	Equisetum hyemale	Rough horsetail	1-1.5L	0.3Ctr	318 No.
LYSvul	Lysimachia vulgaris	Yellow loosestrife	1-1.5L	0.3Ctr	320 No.
LYTsal	Lythrum salicaria	Purple loosestrife	1-1.5L	0.3Ctr	283 No.
					Total :921 No.

Aquatics

Plant Code	Botanical Name	Container Size	Spacing	Number
ALIPA	Alisma parviflora	0.5L	4/m ²	205 No.
CALHE	Callitriche hermaphrodita	0.5L	4/m ²	205 No.
CALPA	Caltha palustris	0.5L	4/m ²	254 No.
CERDE	Ceratophyllum demersum	0.5L	4/m ²	205 No.
FILUL	Filipendula ulmaria	0.5L	4/m ²	105 No.
FONAN	Fontinalis antipyretica	0.5L	4/m ²	205 No.
HIPVU	Hippuris vulgaris	0.5L	4/m ²	305 No.
HYDMO	Hydrocharis morsus-ranae	0.5L	4/m ²	205 No.
IRIPS	Iris pseudacorus	0.5L	4/m ²	105 No.
JUNEF	Juncus effusus	0.5L	4/m ²	305 No.
LYCFLA	Lychnis flos-cuculi 'Alba'	0.5L	4/m ²	254 No.
LYTSA	Lythrum salicaria	0.5L	4/m ²	205 No.
MENCE	Mentha cervina	0.5L	4/m ²	504 No.
MYOSC	Myosotis scorpioides	0.5L	4/m ²	355 No.
MYRAQ	Myriophyllum aquaticum	0.5L	4/m ²	205 No.
NYMAU	Nymphaea 'Aurora'	0.5L	4/m ²	405 No.
POTCR	Potamogeton crispus	0.5L	4/m ²	205 No.
POTPA	Potentilla palustris	0.5L	4/m ²	254 No.
RANACFP	Ranunculus acris 'Flore Plena'	0.5L	4/m ²	205 No.
RANLIG	Ranunculus lingua 'Grandiflorus'	0.5L	4/m ²	205 No.
SAGLA	Sagittaria latifolia	0.5L	4/m ²	205 No.
				Total :5101 No.

Seed Mixes

Code	Seed Mix Type	Area
DITgrs	Ditch	3276.2m ²
EBZgrs	Ecological Buffer Zones	57221.4m ²
TARgrs	Tall Rough	82726m ²
WHIgrs	Whip Areas	49253.9m ²
		Total :192477.5m ²

Planting mixes:

In order to create a natural look different species should be mixed and planted randomly. Given plant spacing should be read as average, but smaller and bigger distances between plants should be used. A landscape architect should be appointed to supervise the planting process.

GENERAL NOTES

- 01.
- 02.
- 03.
- 04.
- 05.

REVISIONS

REV	DATE	DESCRIPTION	REV BY	CHK BY
D	25/02/2021	HSZ Feedback	SS	JH
C	10/02/2021	Sigales replaced with Elder. Water Solder removed.	SS	JH
B	16/12/2020	Whip area adjacent to existing hole 4 shown. (previously missed on masterplan although shown on tree planting plan)	SS	JH
A	15/12/2020	Tree density reduced to 2m spacing following ecologists advice. Tree protection and seed mixes amended.	SS	JH

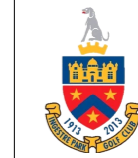
KEY PLAN

CONSULTANT



LEAD CONSULTANT

CLIENT



ISSUED FOR

Planning Direction

PROJECT

Ingestre Park Golf Club

DRAWING TITLE

Planting Schedule

Drawn	SS	Checked	AC	Approved	JH
Date	10/12/2020	Sheet Size	A3	Scale	N.T.S.
Drawing No.					Rev.
G982 NC 711-4 PLANTING SCHEDULE					D
CAD File No.			Consultant Project No.		
G982 NC 711-4 PLANTING SCHEDULE					

This drawing, the designs and details shown are the copyright of International Design Group and shall not be copied or reproduced in any form without their written consent.