

THE EVENTS RESEARCH PROGRAMME DIRECTION - THE REUNION 5K RUN AT KEMPTON PARK

THE HEALTH PROTECTION (CORONAVIRUS, RESTRICTIONS) (STEPS) (ENGLAND) REGULATIONS 2021

The Secretary of State for Digital, Culture, Media and Sport and the Secretary of State for Health and Social Care, in exercise of the powers conferred by regulation 9 of the Health Protection (Coronavirus, Restrictions) (Steps) (England) Regulations 2021 (the 'Regulations')¹, make the following Direction for the purposes of a research programme to evidence the potential transmission of coronavirus in controlled environments.

Before making this Direction, the Secretaries of State have consulted with Professor Jonathan Van-Tam of the Department of Health and Social Care and had regard to any advice given by him.

1. This Direction applies to—
 - a. the following premises—
 - i. the land which is shown bounded externally by the black dotted line on the map attached at the Annex, which is located within Kempton Park Racecourse, Staines Road East, Shepperton, Sunbury-on-Thames TW16 5AQ ('Kempton Park'); and
 - b. the Reunion 5k run 2021 ('the Reunion 5k').
2. In accordance with regulation 9(3) of the Regulations, the Secretaries of State specify that Kempton Park may open for the purposes of hosting the Reunion 5k.
3. This Direction disapplies the following restrictions and requirements in relation to Kempton Park for the purposes of the Reunion 5k on 15 May 2021—
 - a. In relation to the Regulations-
 - i. Paragraph 2, Schedule 2 (participating in gatherings outdoors); and
 - b. In relation to the Health Protection (Coronavirus, Restrictions) (Obligations of Undertakings) (England) Regulations 2020²—
 - i. Regulation 1A(1) (restrictions in relation to relevant premises).

¹ S.I. 2021/364, as amended by S.I. 2021/455.

² S.I. 2020/1008, as amended by S.I. 2020/1046, 1057, 1103, 1104, 1105, 1154, 1200, 1374 and 1611, and S.I. 2021/364.

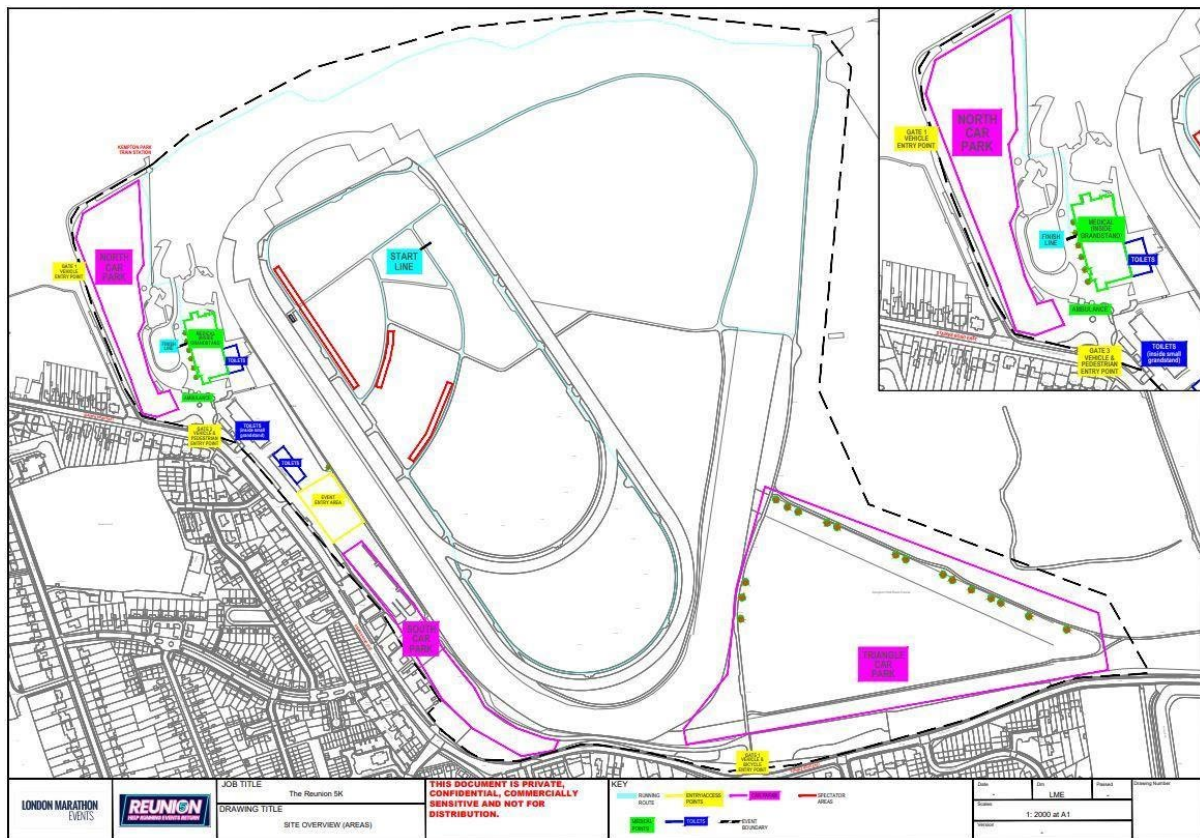
Signed by or on behalf of the Secretary of State for Digital, Culture, Media and Sport

Date of signature

Signed by or on behalf of the Secretary of State for Health and Social Care

Date of signature

ANNEX



A copy of these maps, signed by a member of the Senior Civil Service in the Department for Digital, Culture, Media and Sport, is available for inspection at:

- 100 Parliament Street, Westminster, London SW1A 2BQ; and
- Kempton Park Racecourse, Staines Rd E, Shepperton, Sunbury-on-Thames TW16 5AQ.