



Department
of Health &
Social Care

Yorkshire and Humber lower tier local authority watchlist, epidemiological charts

Produced 4 May 2021

Notes

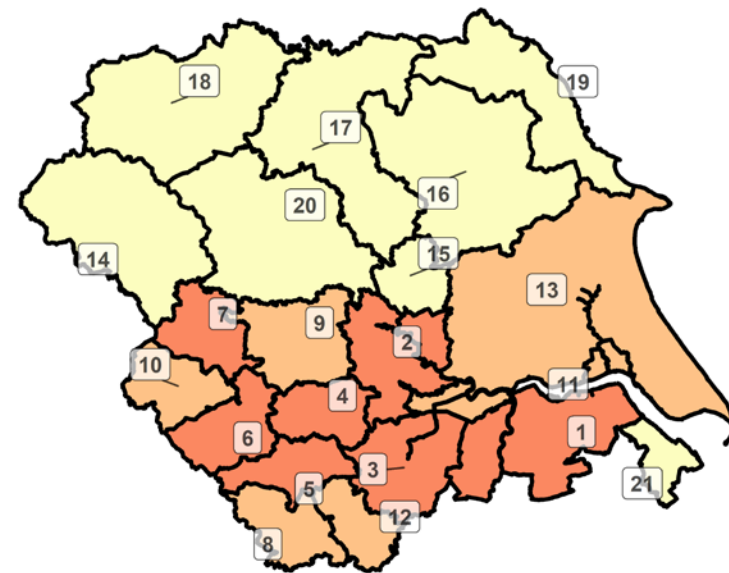
- This data is provided by Public Health England for the purpose of monitoring and supporting the management of Covid-19 infections in local authorities.
- The reports are produced using 2019 Office for National Statistics population data.
- If you would like to know the weekly trend for the case rate charts and persons tested chart please see lower tier local authority watchlist.

Weekly case rate per 100,000 population by local authority from 23 Apr to 29 Apr 2021

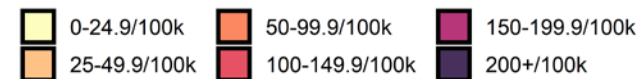
Yorkshire and Humber
COVID-19 cases: 23 Apr to 29 Apr 2021
 Weekly case rates per 100,000 population by local authority

| Rank | Local Authority | Case Rate (per 100,000) | Number of cases (1 week) |
|------|--------------------|-------------------------|--------------------------|
| 1 | North Lincolnshire | 75.5 | 130 |
| 2 | Selby | 72.8 | 66 |
| 3 | Doncaster | 65.1 | 203 |
| 4 | Wakefield | 64.3 | 224 |
| 5 | Barnsley | 60.8 | 150 |
| 6 | Kirklees | 58.7 | 258 |
| 7 | Bradford | 51.5 | 278 |
| 8 | Sheffield | 44.3 | 259 |
| 9 | Leeds | 42.7 | 339 |
| 10 | Calderdale | 36.4 | 77 |

| Rank | Local Authority | Case Rate (per 100,000) | Number of cases (1 week) |
|------|-----------------------------|-------------------------|--------------------------|
| 11 | Kingston upon Hull, City of | 36.2 | 94 |
| 12 | Rotherham | 33.2 | 88 |
| 13 | East Riding of Yorkshire | 29.9 | 102 |
| 14 | Craven | 22.8 | 13 |
| 15 | York | 21.8 | 46 |
| 16 | Ryedale | 21.7 | 12 |
| 17 | Hambleton | 19.7 | 18 |
| 18 | Richmondshire | 18.6 | 10 |
| 19 | Scarborough | 17.5 | 19 |
| 20 | Harrogate | 17.4 | 28 |
| 21 | North East Lincolnshire | 13.8 | 22 |



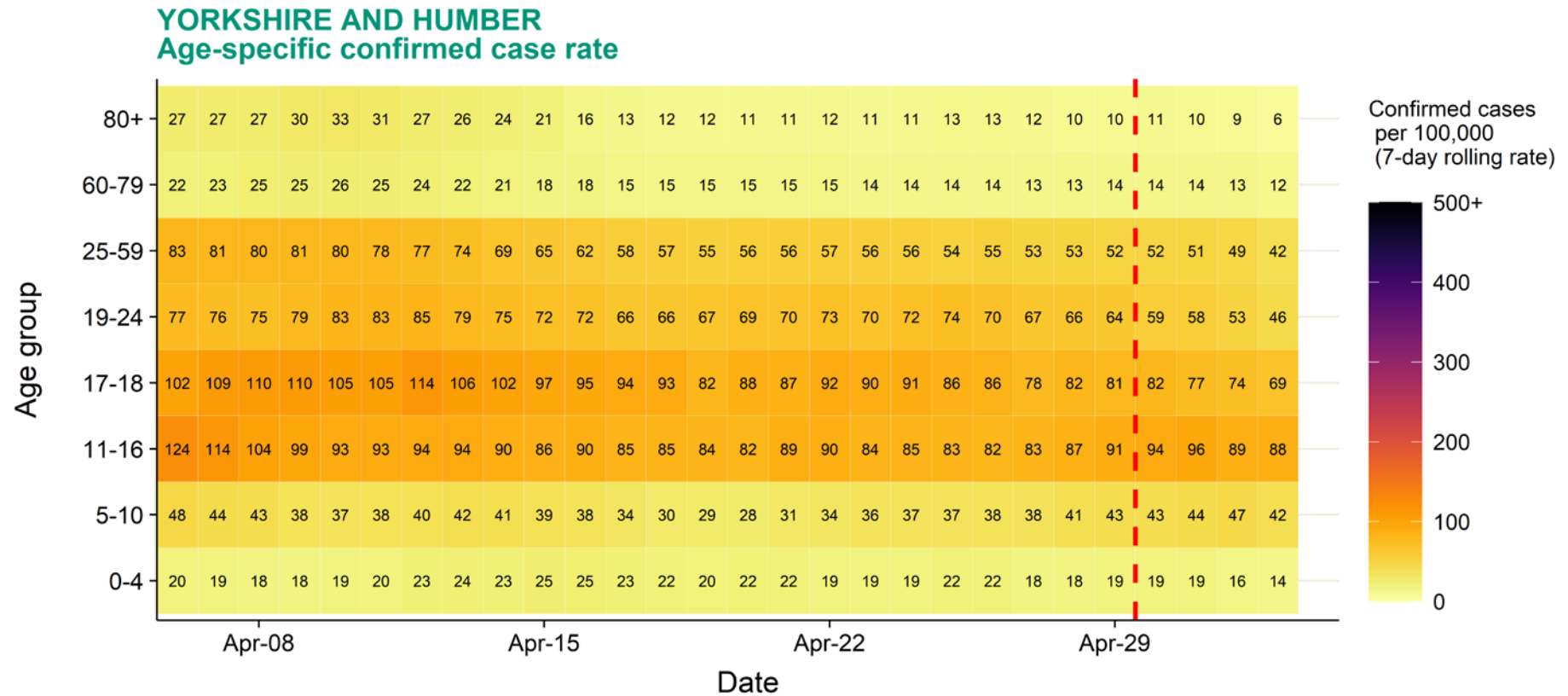
Covid-19 rate by local authority



Data from SGSS; Pillar 1 and 2 testing. Figure by Outbreak Surveillance Team, Public Health England.

Contains National Statistics data including 2019 population estimates © Crown copyright and database right 2020

Yorkshire and Humber age-stratified heatmap of weekly case rate, 6 Apr to 29 Apr 2021



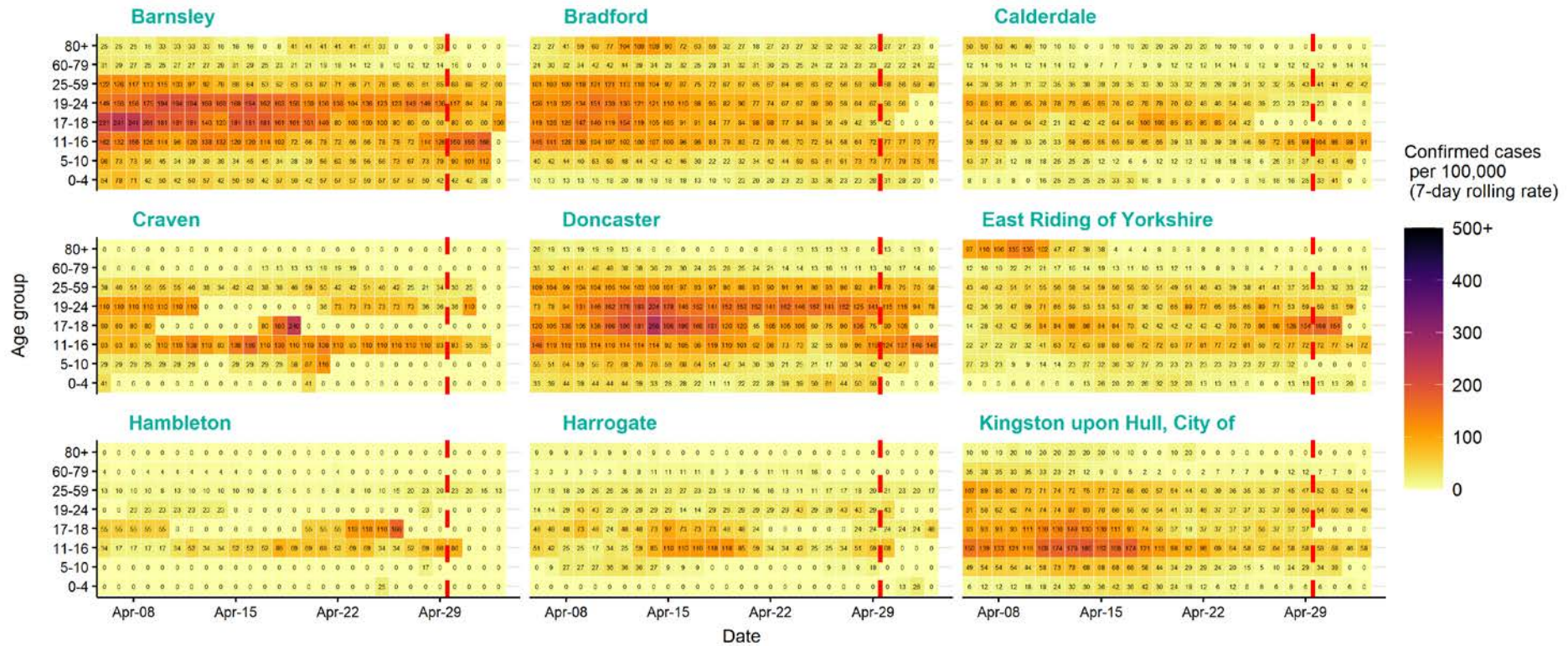
Source: Case data from SGSS. Produced by Outbreak Surveillance Team, PHE

The red dashed line on the heatmaps show the last four days where data may be incomplete due to reporting delays and removal of LFDs with accompanying negative PCR results.

Please consider this data provisional.

Yorkshire and Humber age-stratified heatmap of weekly case rate by local authority, 6 Apr to 29 Apr 2021

YORKSHIRE AND HUMBER LOCAL AUTHORITIES Age-specific confirmed case rate



Source: Case data from SGSS. Produced by Outbreak Surveillance Team, PHE

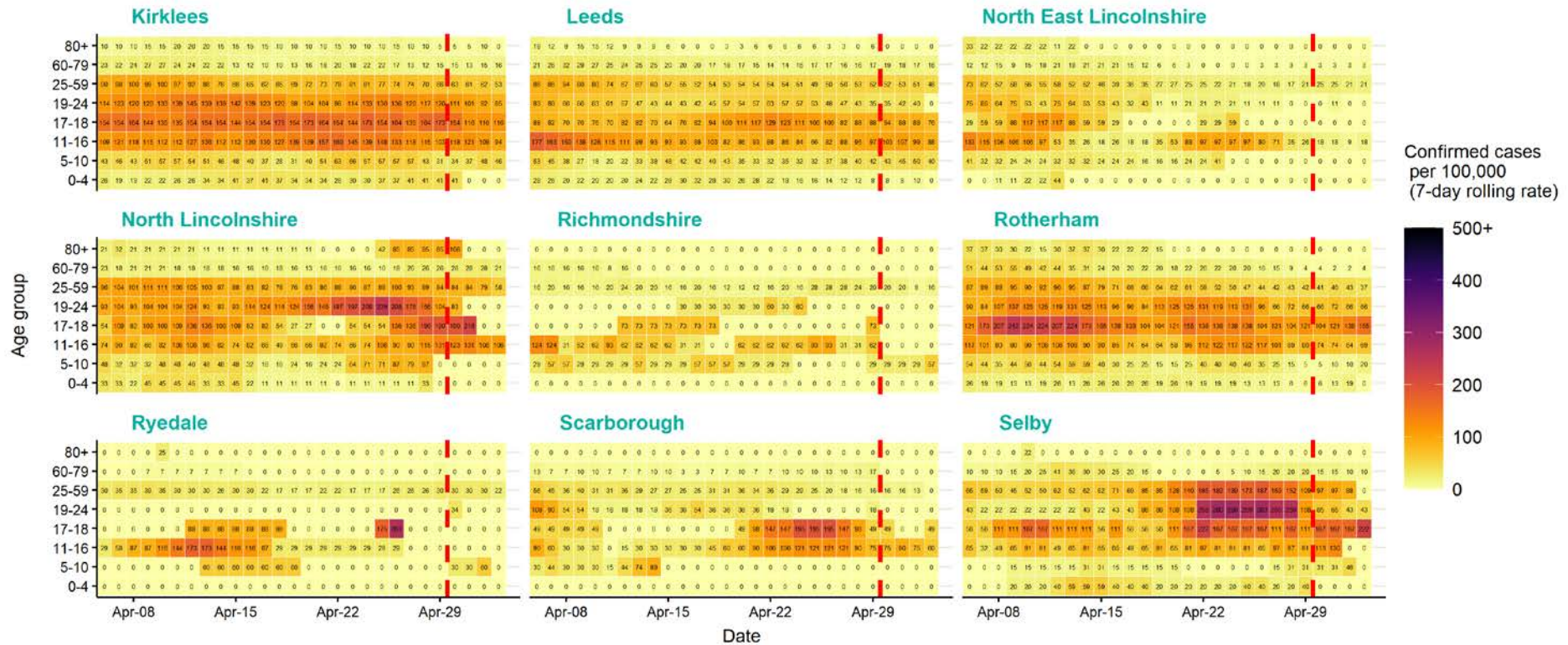
The red dashed line on the heatmaps show the last four days where data may be incomplete due to reporting delays

and removal of LFDs with accompanying negative PCR results.

Please consider this data provisional.

Yorkshire and Humber age-stratified heatmap of weekly case rate by local authority, 6 Apr to 29 Apr 2021

YORKSHIRE AND HUMBER LOCAL AUTHORITIES Age-specific confirmed case rate

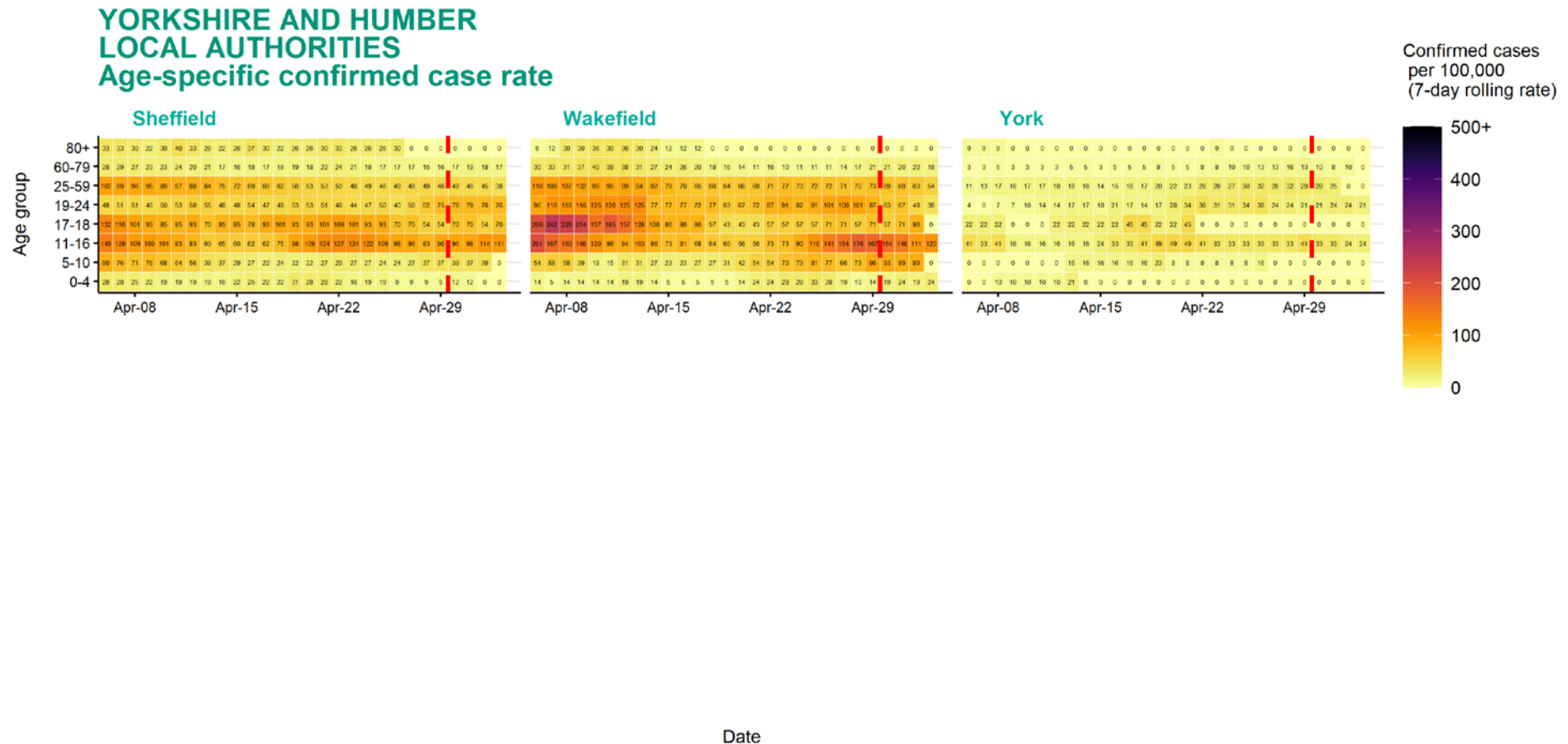


Source: Case data from SGSS. Produced by Outbreak Surveillance Team, PHE

The red dashed line on the heatmaps show the last four days where data may be incomplete due to reporting delays and removal of LFDs with accompanying negative PCR results.

Please consider this data provisional.

Yorkshire and Humber age-stratified heatmap of weekly case rate by local authority, 6 Apr to 29 Apr 2021



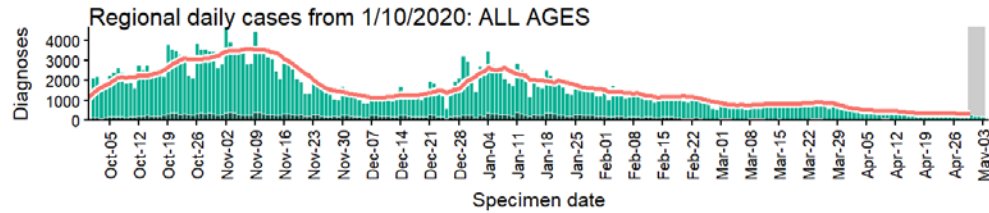
Source: Case data from SGSS. Produced by Outbreak Surveillance Team, PHE

The red dashed line on the heatmaps show the last four days where data may be incomplete due to reporting delays and removal of LFDs with accompanying negative PCR results.

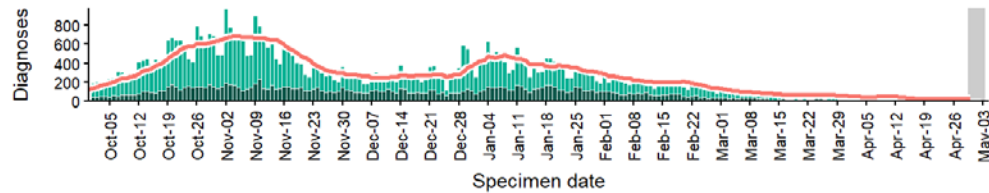
Please consider this data provisional.

Yorkshire and Humber regional case numbers, testing numbers and positivity, 1 Oct to 3 May 2021

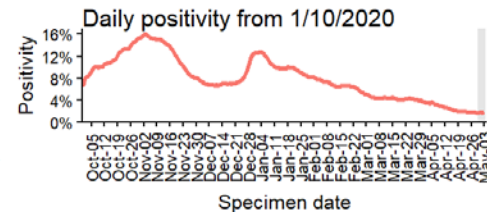
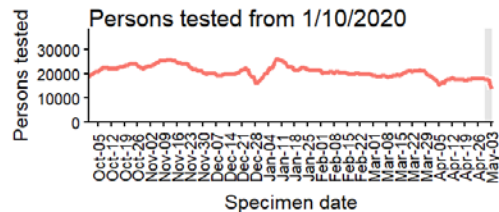
YORKSHIRE AND HUMBER Cases and persons tested up to May 3 2021



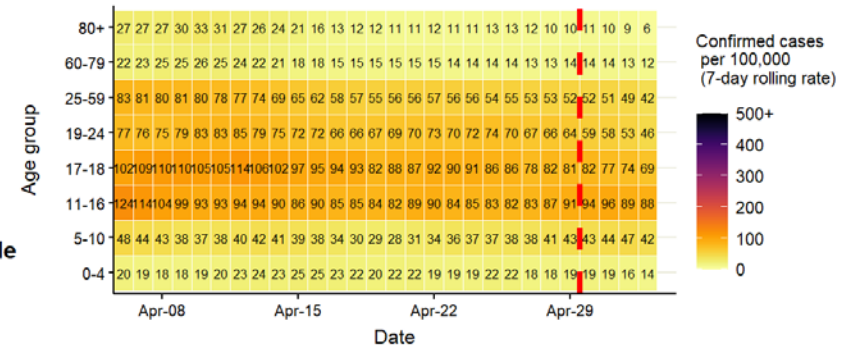
Regional daily cases from 1/10/2020: 60+ YEARS ONLY NOTE: different y-axis scale



4 days with incomplete data Pillar 1 Pillar 2 Total 7 day moving average (P1 + P2)



Regional age-stratified case rate heatmap for Yorkshire and Humber: 6 Apr to 3 May 2021,



The red dotted line denotes the last four days, subject to reporting delays

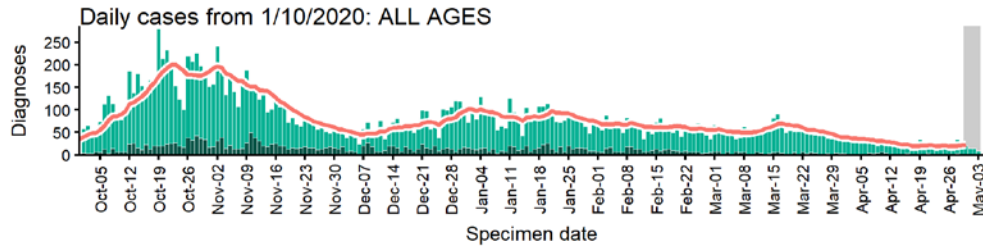
Data from SGSS. Produced by Outbreak Surveillance Team, PHE

The red dashed line on the heatmaps show the last four days where data may be incomplete due to reporting delays and removal of LFDs with accompanying negative PCR results.

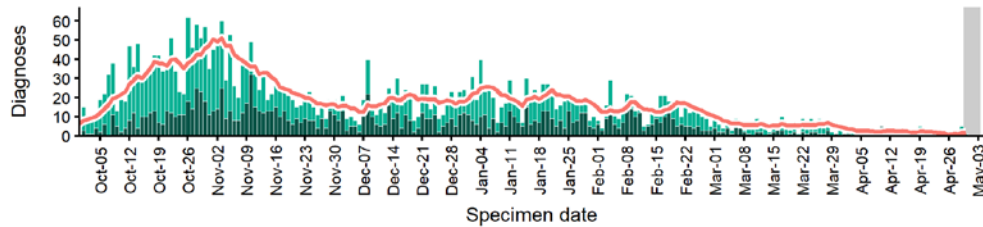
Please consider this data provisional.

Barnsley case numbers, testing numbers and positivity, 1 Oct to 3 May 2021

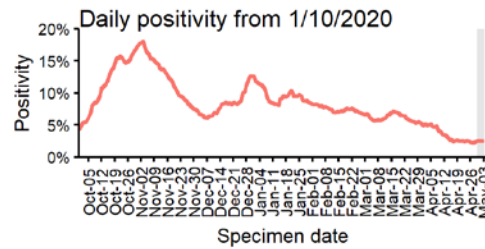
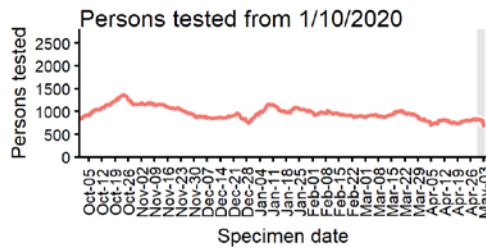
BARNSELEY
Cases and persons tested up to May 3 2021



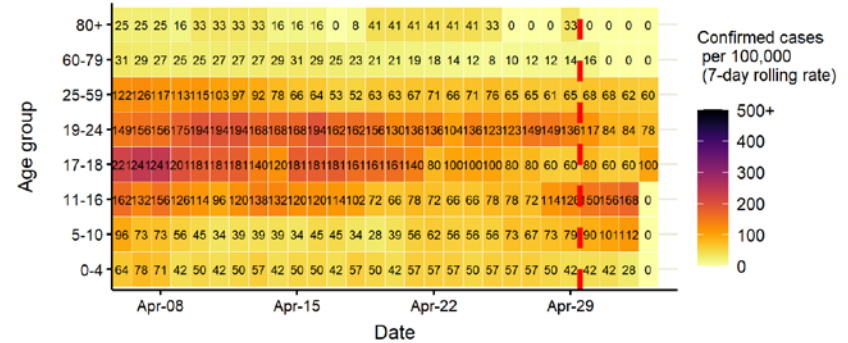
Daily cases from 1/10/2020: 60+ YEARS ONLY **NOTE: different y-axis scale**



4 days with incomplete data Pillar 1 Pillar 2 Total 7 day moving average (P1 + P2)



Age-stratified case rate heatmap for Barnsley: 6 Apr to 3 May 2021

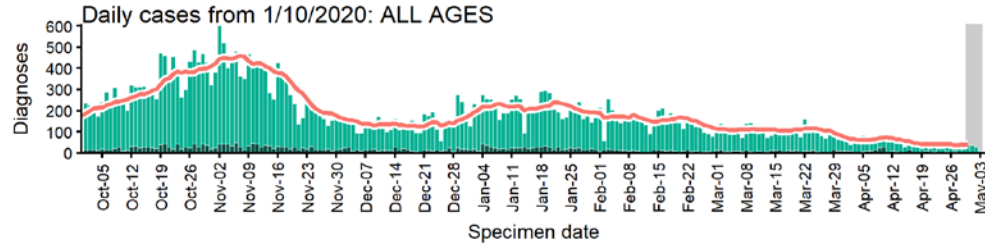


The red dashed line on the heatmaps show the last four days where data may be incomplete due to reporting delays and removal of LFDs with accompanying negative PCR results. Please consider this data provisional.

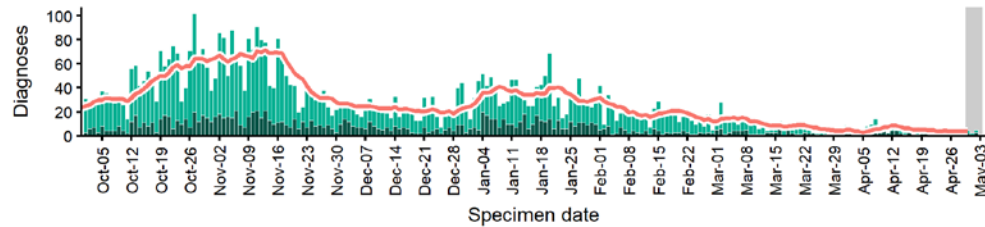
Data from SGSS. Produced by Outbreak Surveillance Team, PHE

Bradford case numbers, testing numbers and positivity, 1 Oct to 3 May 2021

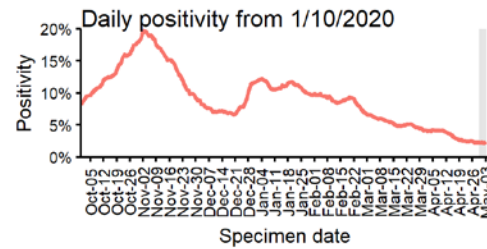
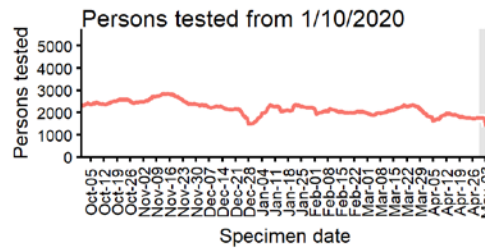
BRADFORD
Cases and persons tested up to May 3 2021



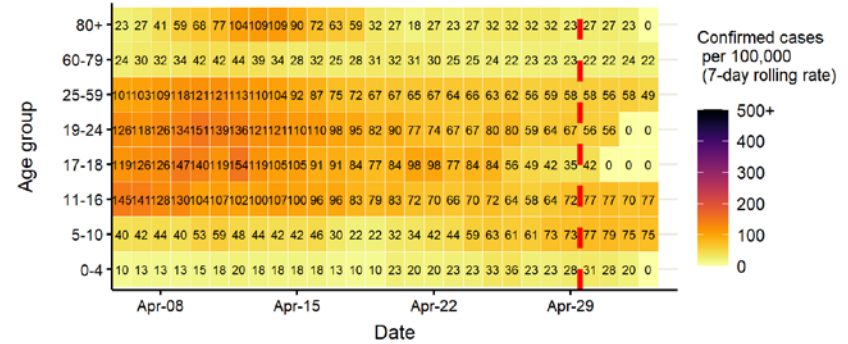
Daily cases from 1/10/2020: 60+ YEARS ONLY **NOTE: different y-axis scale**



4 days with incomplete data Pillar 1 Pillar 2 Total 7 day moving average (P1 + P2)



Age-stratified case rate heatmap for Bradford: 6 Apr to 3 May 2021



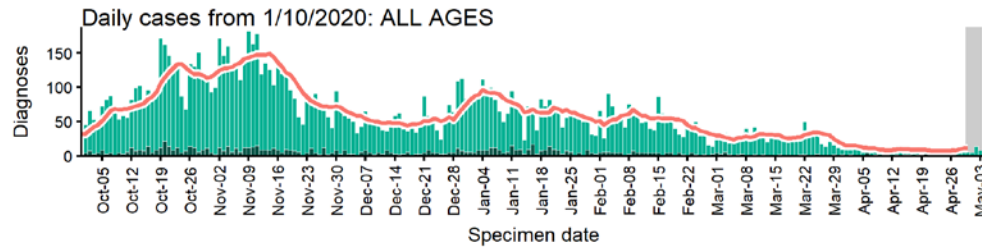
The red dashed line on the heatmaps show the last four days where data may be incomplete due to reporting delays and removal of LFDs with accompanying negative PCR results.

Please consider this data provisional.

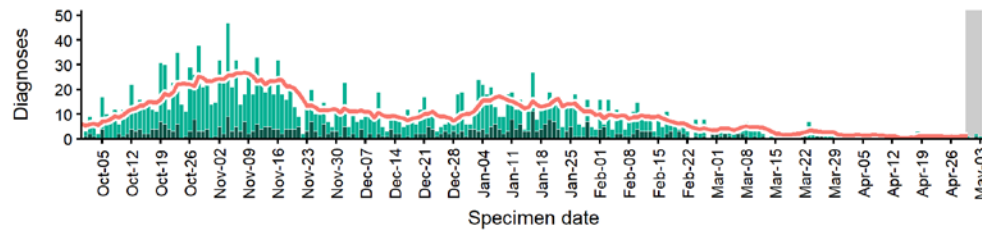
Data from SGSS. Produced by Outbreak Surveillance Team, PHE

Calderdale case numbers, testing numbers and positivity, 1 Oct to 3 May 2021

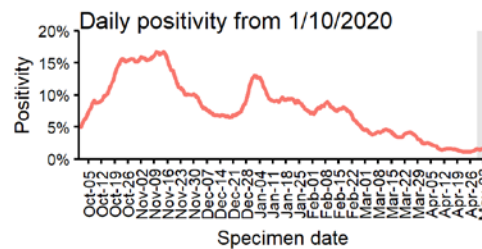
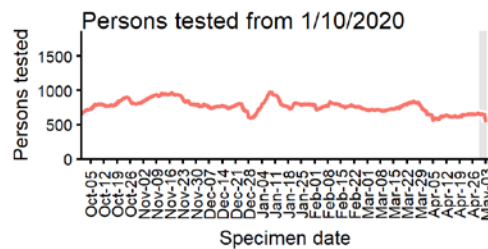
CALDERDALE Cases and persons tested up to May 3 2021



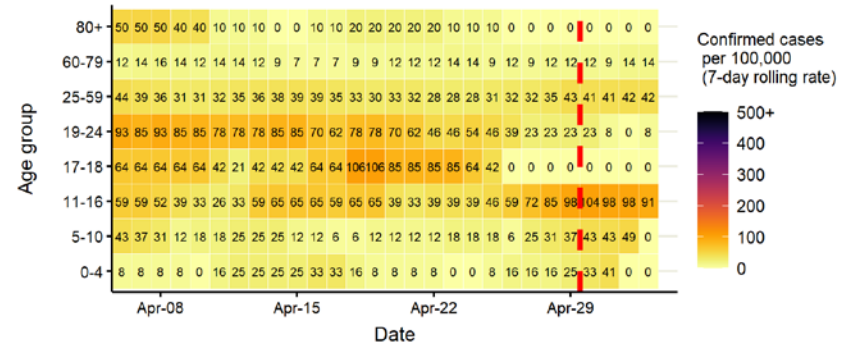
Daily cases from 1/10/2020: 60+ YEARS ONLY **NOTE: different y-axis scale**



4 days with incomplete data Pillar 1 Pillar 2 Total 7 day moving average (P1 + P2)



Age-stratified case rate heatmap for Calderdale: 6 Apr to 3 May 2021

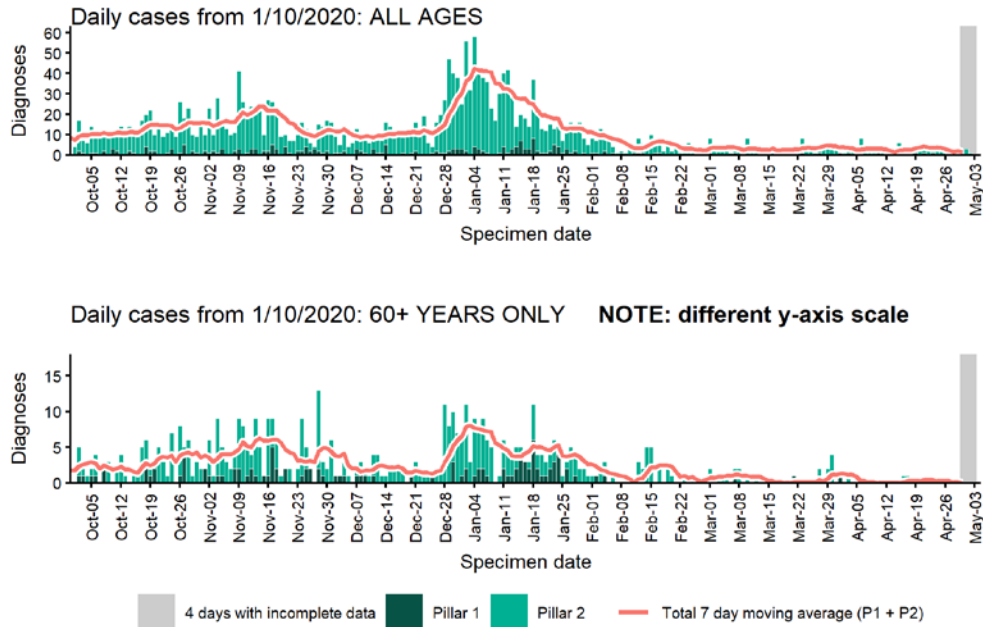


The red dashed line on the heatmaps show the last four days where data may be incomplete due to reporting delays and removal of LFDs with accompanying negative PCR results. Please consider this data provisional.

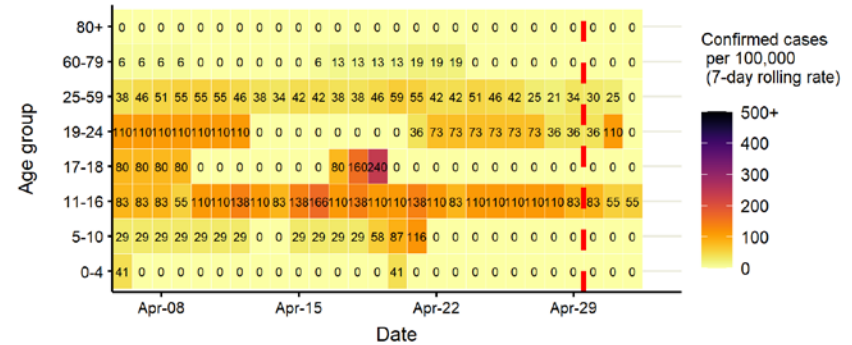
Data from SGSS. Produced by Outbreak Surveillance Team, PHE

Craven case numbers, testing numbers and positivity, 1 Oct to 3 May 2021

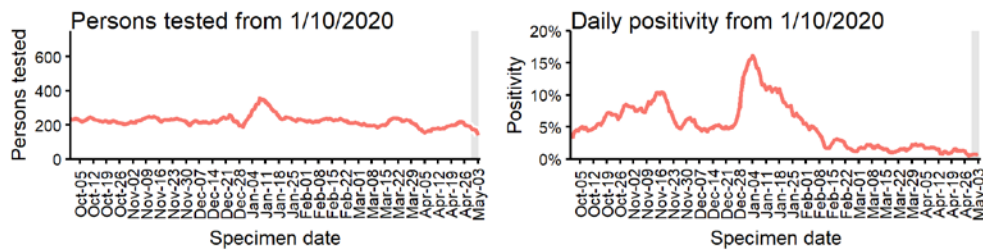
CRAVEN Cases and persons tested up to May 3 2021



Age-stratified case rate heatmap for Craven: 6 Apr to 3 May 2021



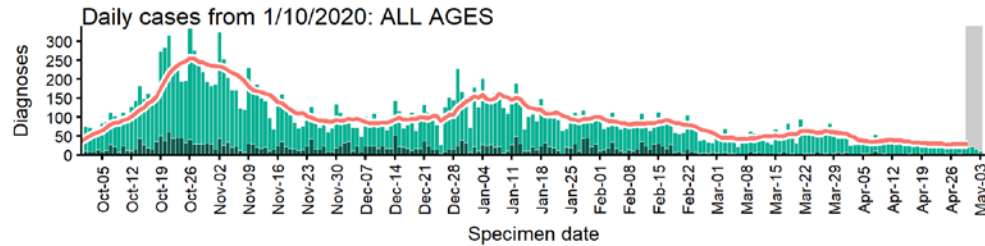
The red dashed line on the heatmaps show the last four days where data may be incomplete due to reporting delays and removal of LFDs with accompanying negative PCR results. Please consider this data provisional.



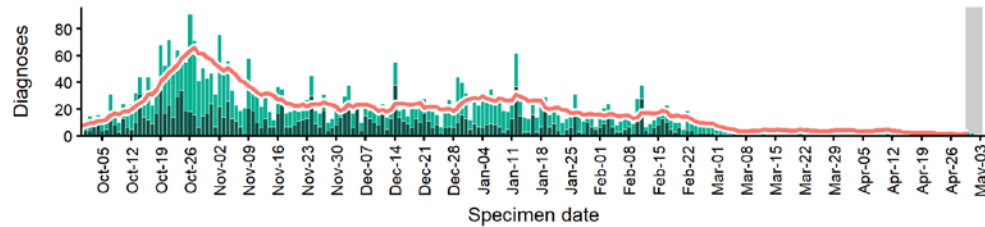
Data from SGSS. Produced by Outbreak Surveillance Team, PHE

Doncaster case numbers, testing numbers and positivity, 1 Oct to 3 May 2021

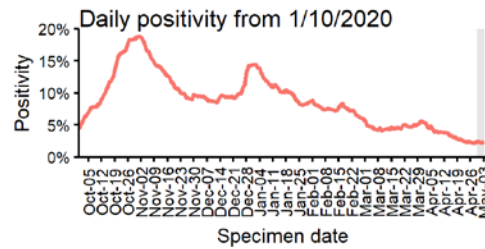
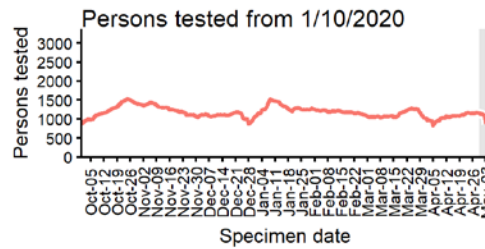
DONCASTER Cases and persons tested up to May 3 2021



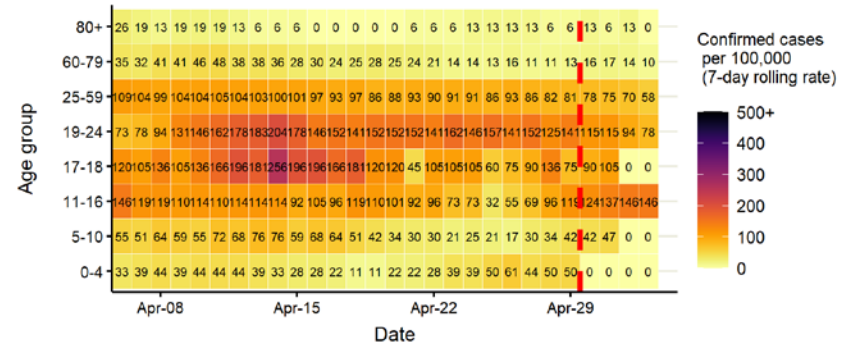
Daily cases from 1/10/2020: 60+ YEARS ONLY **NOTE: different y-axis scale**



4 days with incomplete data Pillar 1 Pillar 2 Total 7 day moving average (P1 + P2)



Age-stratified case rate heatmap for Doncaster: 6 Apr to 3 May 2021

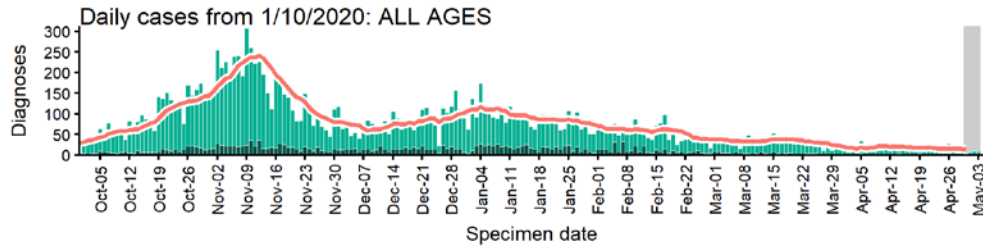


The red dashed line on the heatmaps show the last four days where data may be incomplete due to reporting delays and removal of LFDs with accompanying negative PCR results. Please consider this data provisional.

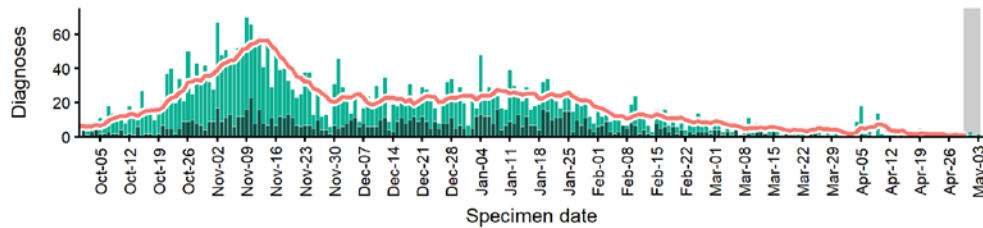
Data from SGSS. Produced by Outbreak Surveillance Team, PHE

East Riding of Yorkshire case numbers, testing numbers and positivity, 1 Oct to 3 May 2021

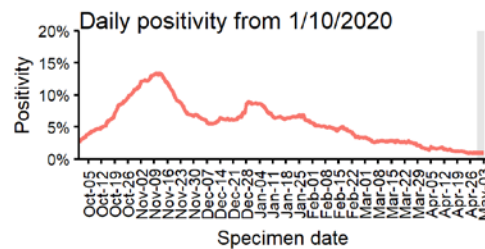
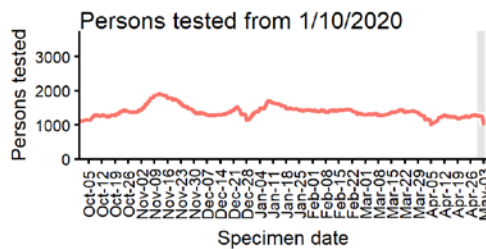
EAST RIDING OF YORKSHIRE Cases and persons tested up to May 3 2021



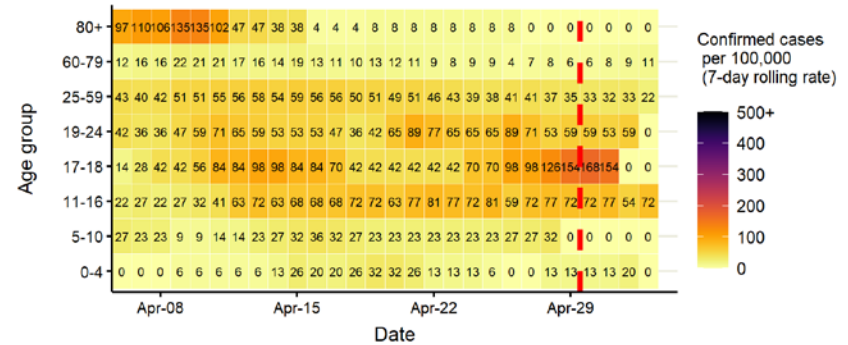
Daily cases from 1/10/2020: 60+ YEARS ONLY **NOTE: different y-axis scale**



4 days with incomplete data
 Pillar 1
 Pillar 2
 Total 7 day moving average (P1 + P2)



Age-stratified case rate heatmap for East Riding of Yorkshire: 6 Apr to 3 May 2021

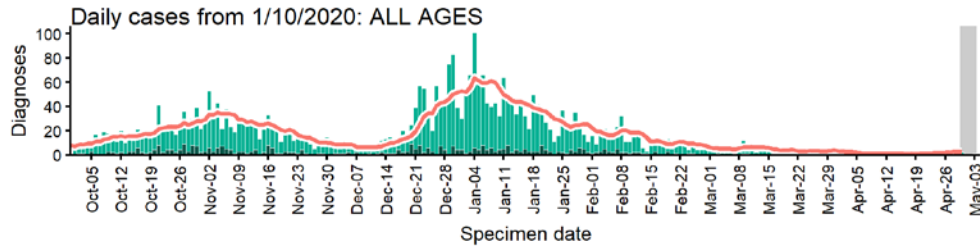


The red dashed line on the heatmaps show the last four days where data may be incomplete due to reporting delays and removal of LFDs with accompanying negative PCR results. Please consider this data provisional.

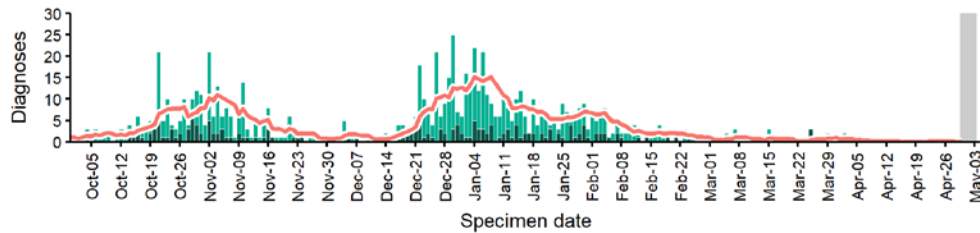
Data from SGSS. Produced by Outbreak Surveillance Team, PHE

Hambleton case numbers, testing numbers and positivity, 1 Oct to 3 May 2021

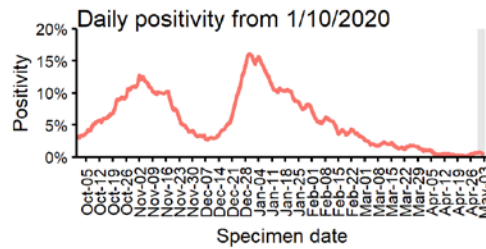
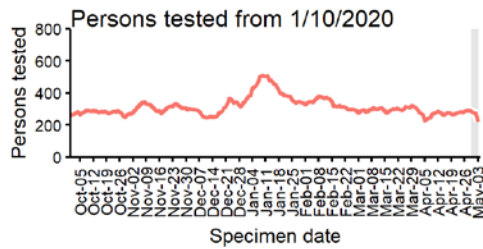
HAMBLETON Cases and persons tested up to May 3 2021



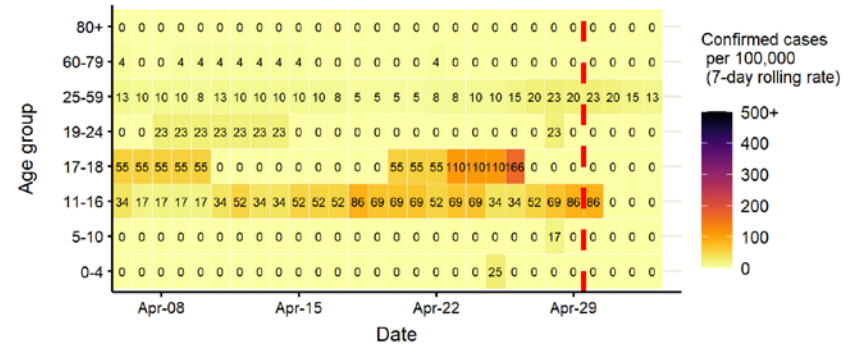
Daily cases from 1/10/2020: 60+ YEARS ONLY NOTE: different y-axis scale



4 days with incomplete data Pillar 1 Pillar 2 Total 7 day moving average (P1 + P2)



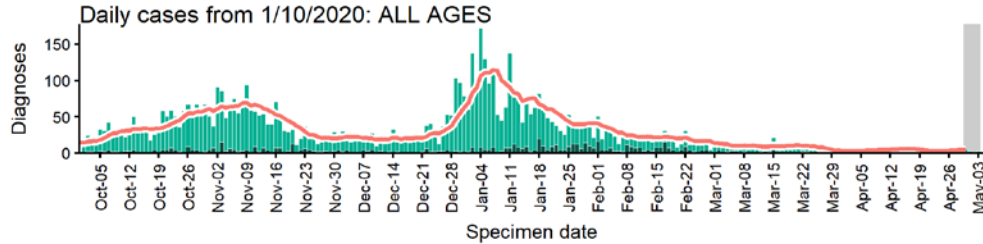
Age-stratified case rate heatmap for Hambleton: 6 Apr to 3 May 2021



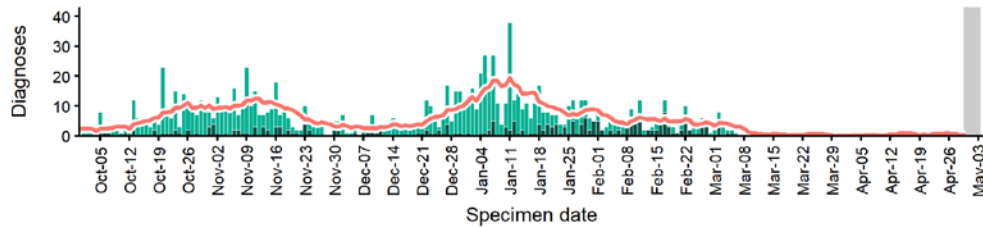
The red dashed line on the heatmaps show the last four days where data may be incomplete due to reporting delays and removal of LFDs with accompanying negative PCR results. Please consider this data provisional.

Harrogate case numbers, testing numbers and positivity, 1 Oct to 3 May 2021

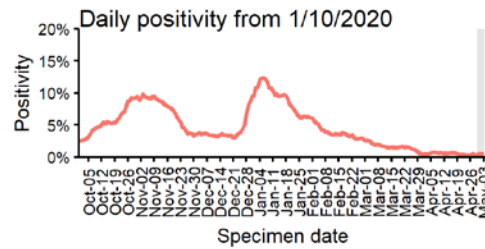
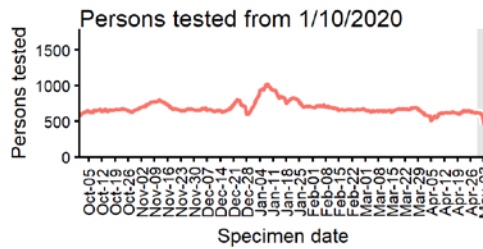
HARROGATE Cases and persons tested up to May 3 2021



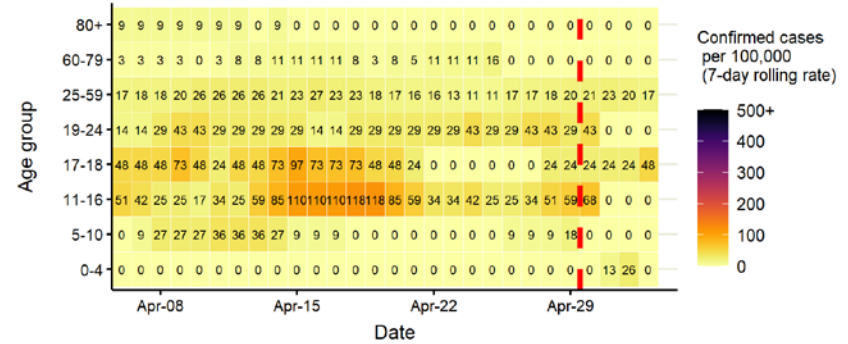
Daily cases from 1/10/2020: 60+ YEARS ONLY **NOTE: different y-axis scale**



4 days with incomplete data Pillar 1 Pillar 2 Total 7 day moving average (P1 + P2)



Age-stratified case rate heatmap for Harrogate: 6 Apr to 3 May 2021

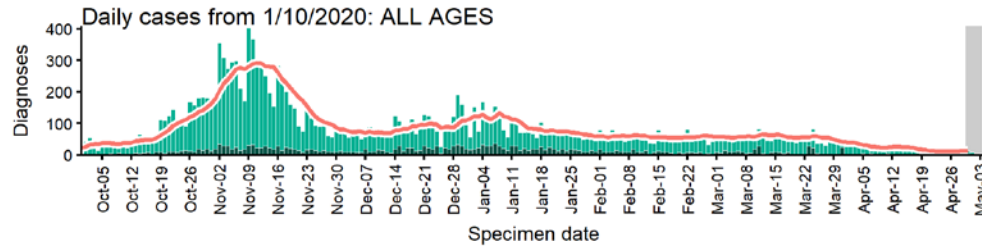


The red dashed line on the heatmaps show the last four days where data may be incomplete due to reporting delays and removal of LFDs with accompanying negative PCR results. Please consider this data provisional.

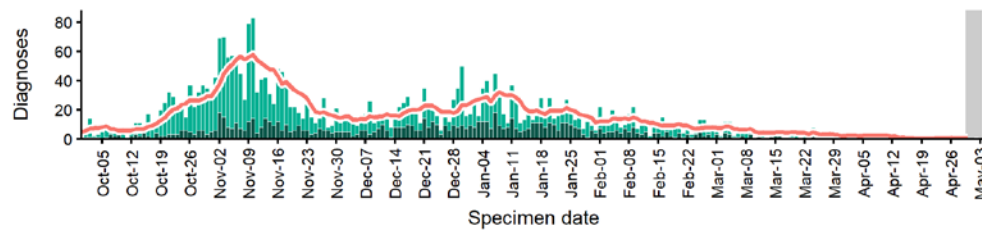
Data from SGSS. Produced by Outbreak Surveillance Team, PHE

Kingston upon Hull, City of case numbers, testing numbers and positivity, 1 Oct to 3 May 2021

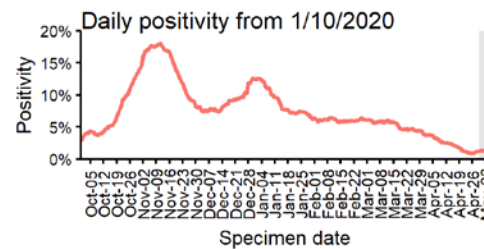
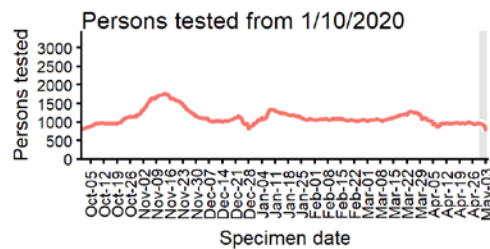
KINGSTON UPON HULL, CITY OF
Cases and persons tested up to May 3 2021



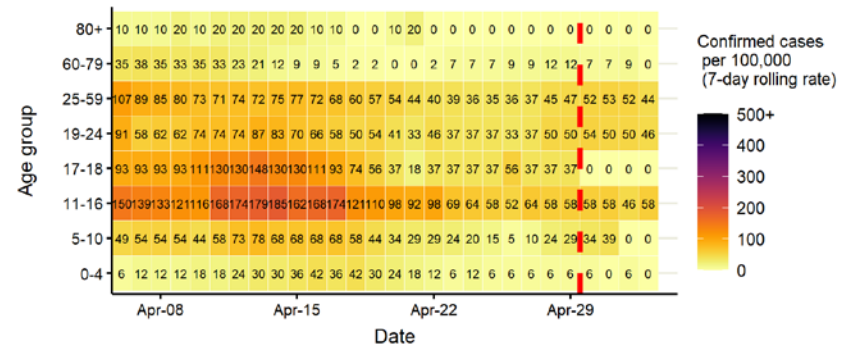
Daily cases from 1/10/2020: 60+ YEARS ONLY **NOTE: different y-axis scale**



4 days with incomplete data Pillar 1 Pillar 2 Total 7 day moving average (P1 + P2)



Age-stratified case rate heatmap for Kingston upon Hull, City of:
6 Apr to 3 May 2021

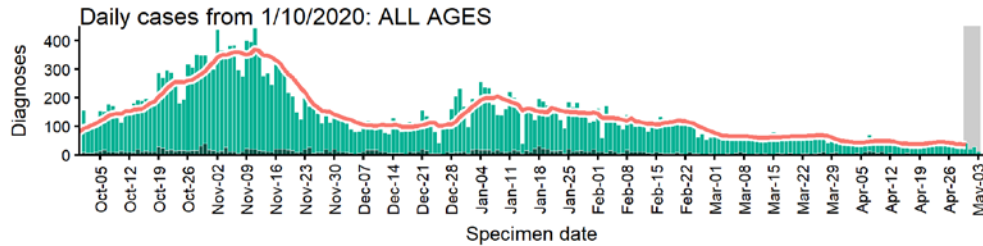


The red dashed line on the heatmaps show the last four days where data may be incomplete due to reporting delays and removal of LFDs with accompanying negative PCR results. Please consider this data provisional.

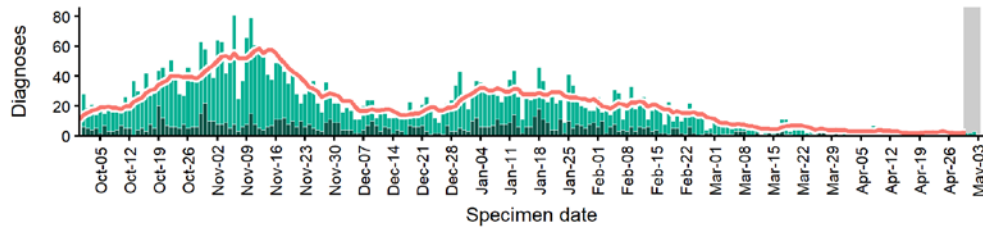
Data from SGSS. Produced by Outbreak Surveillance Team, PHE

Kirklees case numbers, testing numbers and positivity, 1 Oct to 3 May 2021

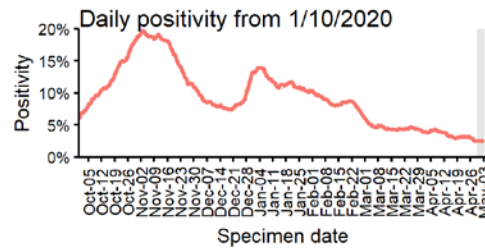
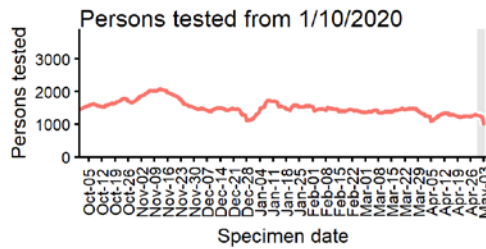
KIRKLEES
Cases and persons tested up to May 3 2021



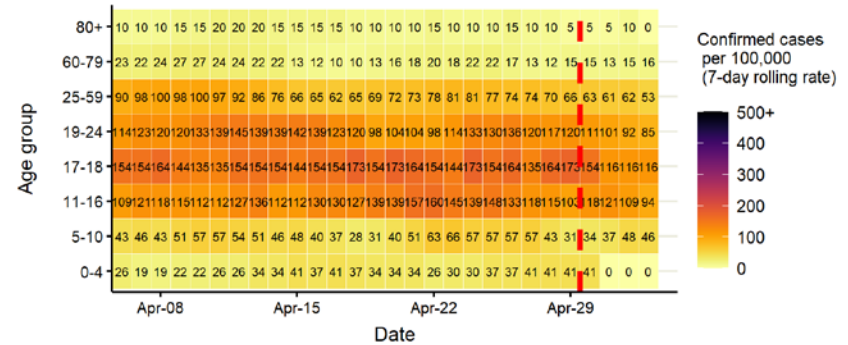
Daily cases from 1/10/2020: 60+ YEARS ONLY **NOTE: different y-axis scale**



4 days with incomplete data Pillar 1 Pillar 2 Total 7 day moving average (P1 + P2)



Age-stratified case rate heatmap for Kirklees: 6 Apr to 3 May 2021

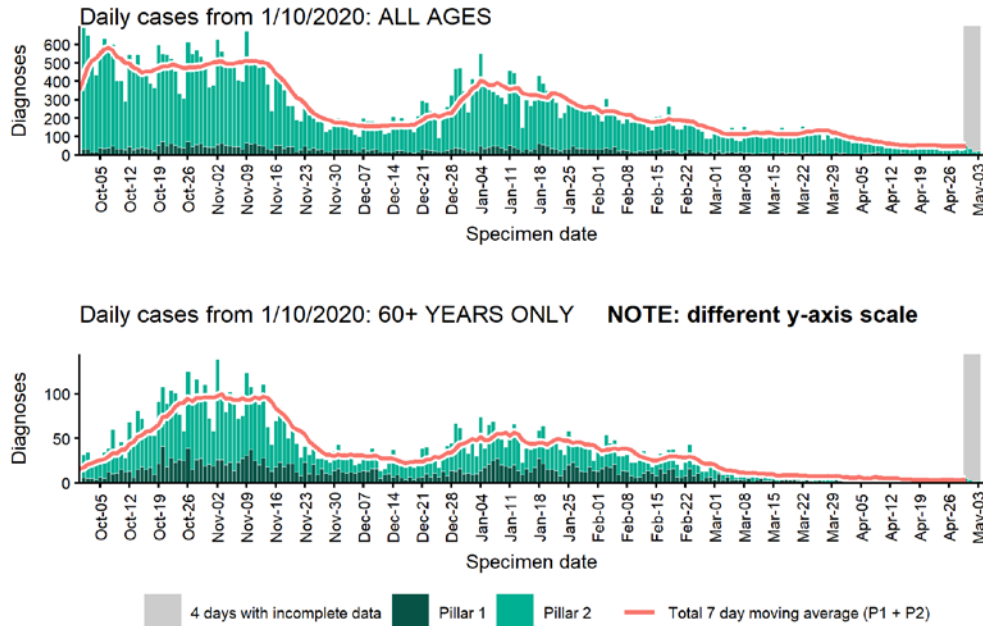


The red dashed line on the heatmaps show the last four days where data may be incomplete due to reporting delays and removal of LFDs with accompanying negative PCR results. Please consider this data provisional.

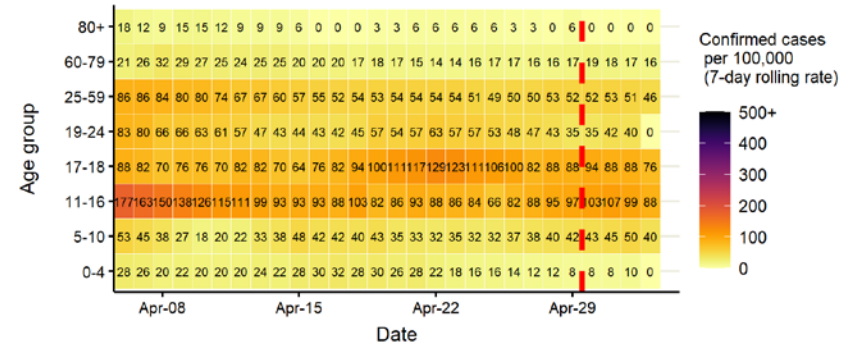
Data from SGSS. Produced by Outbreak Surveillance Team, PHE

Leeds case numbers, testing numbers and positivity, 1 Oct to 3 May 2021

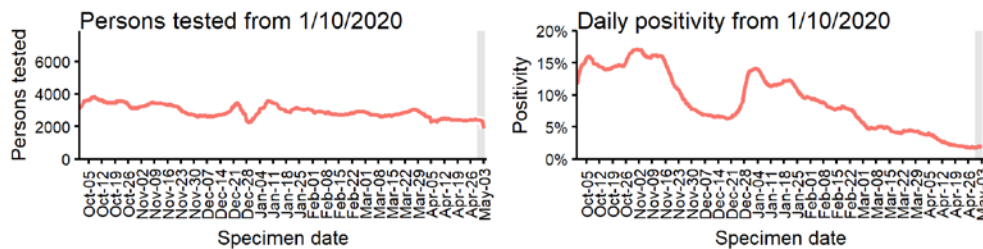
LEEDS
Cases and persons tested up to May 3 2021



Age-stratified case rate heatmap for Leeds: 6 Apr to 3 May 2021



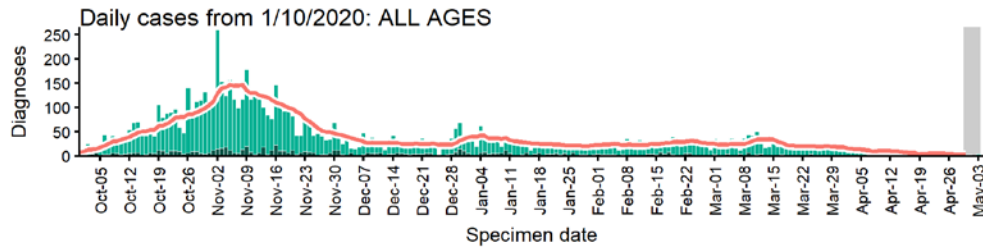
The red dashed line on the heatmaps show the last four days where data may be incomplete due to reporting delays and removal of LFDs with accompanying negative PCR results. Please consider this data provisional.



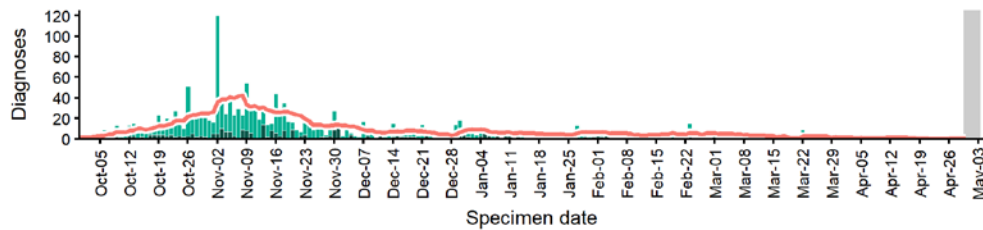
Data from SGSS. Produced by Outbreak Surveillance Team, PHE

North East Lincolnshire case numbers, testing numbers and positivity, 1 Oct to 3 May 2021

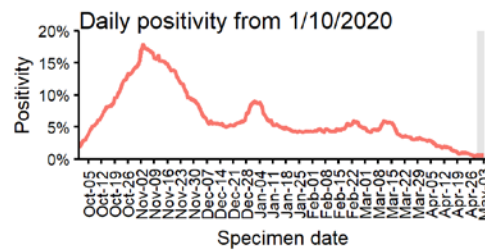
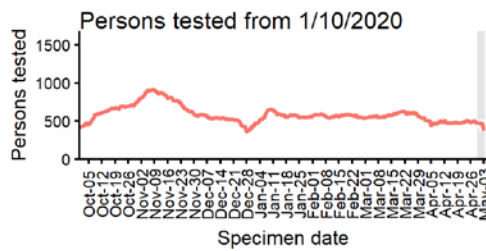
NORTH EAST LINCOLNSHIRE
Cases and persons tested up to May 3 2021



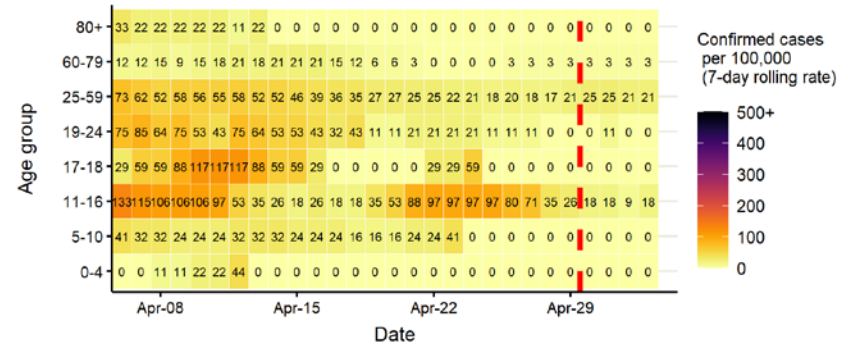
Daily cases from 1/10/2020: 60+ YEARS ONLY **NOTE: different y-axis scale**



4 days with incomplete data Pillar 1 Pillar 2 Total 7 day moving average (P1 + P2)



Age-stratified case rate heatmap for North East Lincolnshire: 6 Apr to 3 May 2021

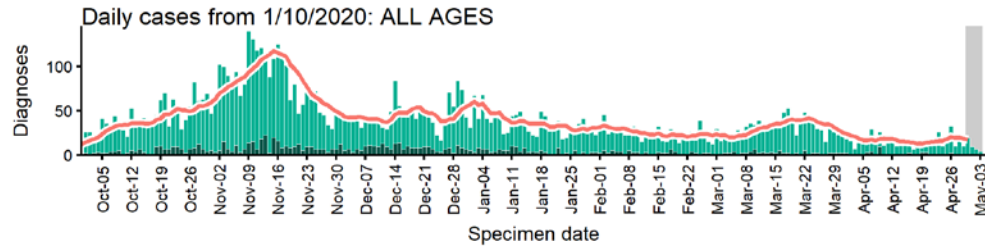


The red dashed line on the heatmaps show the last four days where data may be incomplete due to reporting delays and removal of LFDs with accompanying negative PCR results. Please consider this data provisional.

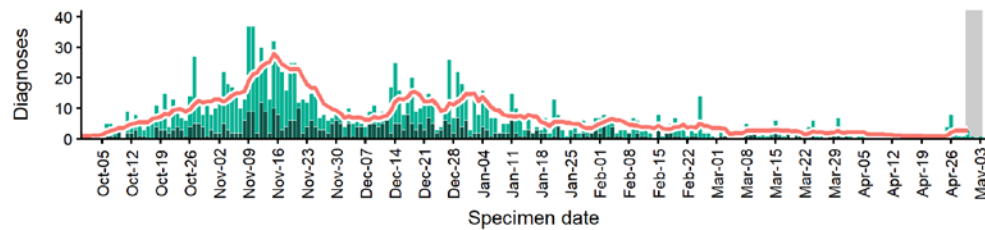
Data from SGSS. Produced by Outbreak Surveillance Team, PHE

North Lincolnshire case numbers, testing numbers and positivity, 1 Oct to 3 May 2021

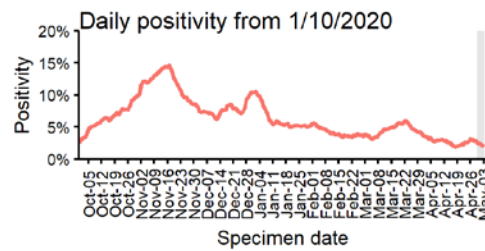
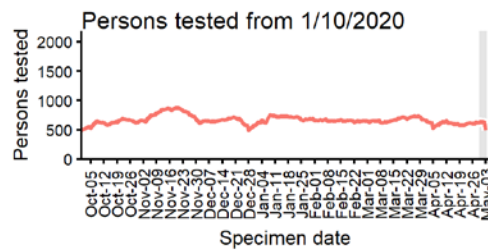
NORTH LINCOLNSHIRE Cases and persons tested up to May 3 2021



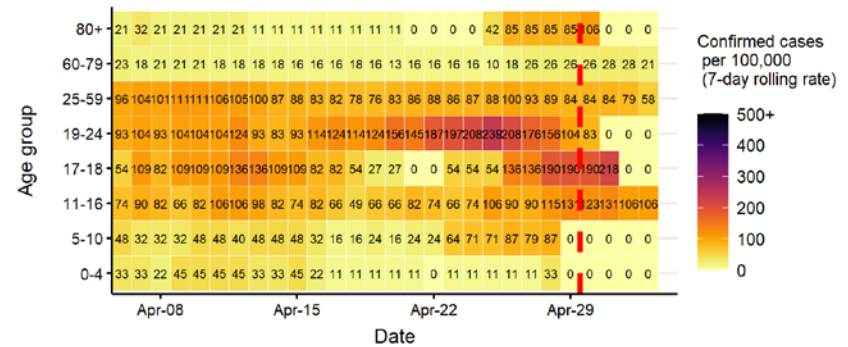
Daily cases from 1/10/2020: 60+ YEARS ONLY **NOTE: different y-axis scale**



4 days with incomplete data Pillar 1 Pillar 2 Total 7 day moving average (P1 + P2)



Age-stratified case rate heatmap for North Lincolnshire: 6 Apr to 3 May 2021

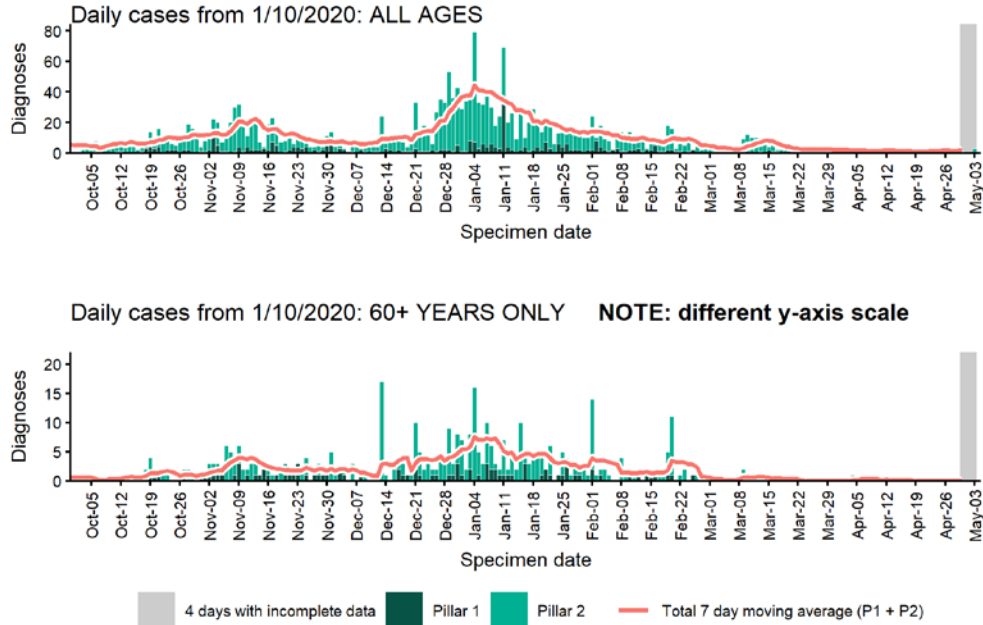


The red dashed line on the heatmaps show the last four days where data may be incomplete due to reporting delays and removal of LFDs with accompanying negative PCR results. Please consider this data provisional.

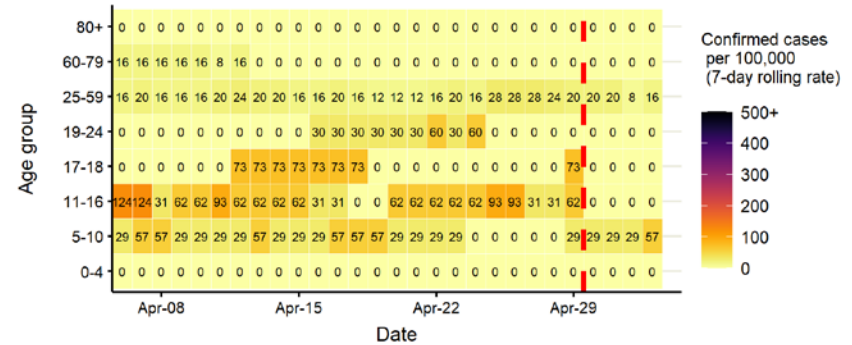
Data from SGSS. Produced by Outbreak Surveillance Team, PHE

Richmondshire case numbers, testing numbers and positivity, 1 Oct to 3 May 2021

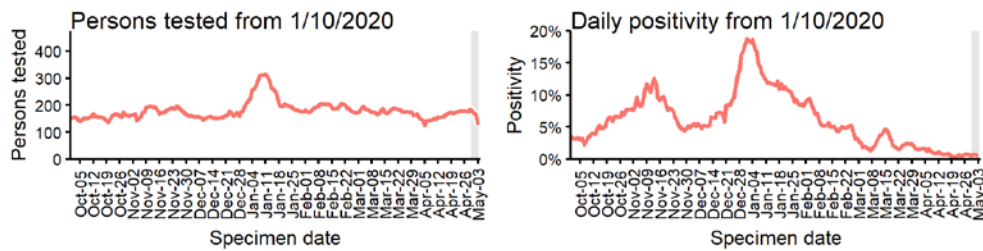
RICHMONDSHIRE
Cases and persons tested up to May 3 2021



Age-stratified case rate heatmap for Richmondshire: 6 Apr to 3 May 2021



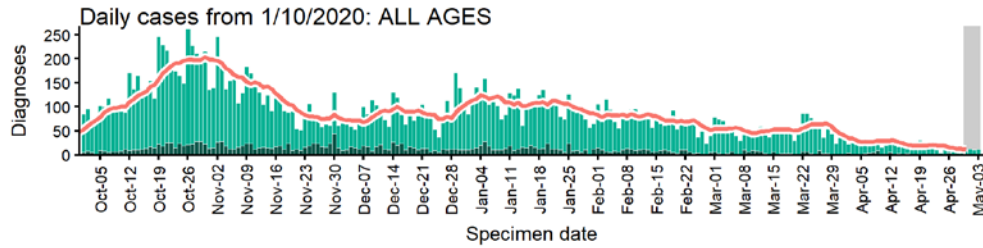
The red dashed line on the heatmaps show the last four days where data may be incomplete due to reporting delays and removal of LFDs with accompanying negative PCR results. Please consider this data provisional.



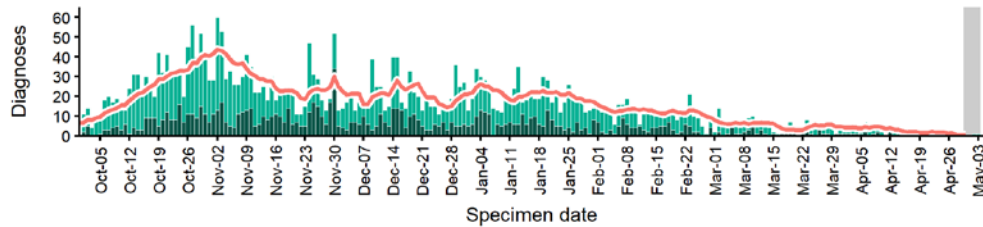
Data from SGSS. Produced by Outbreak Surveillance Team, PHE

Rotherham case numbers, testing numbers and positivity, 1 Oct to 3 May 2021

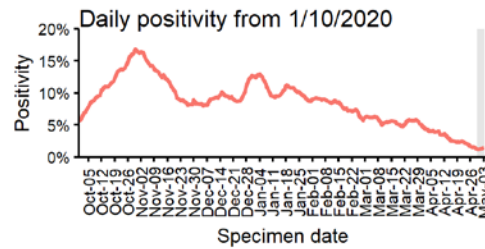
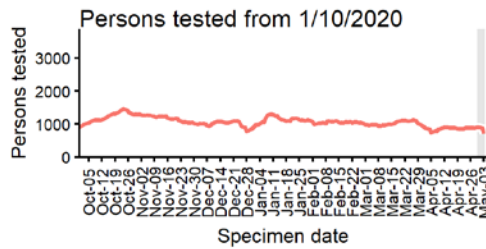
ROTHERHAM
Cases and persons tested up to May 3 2021



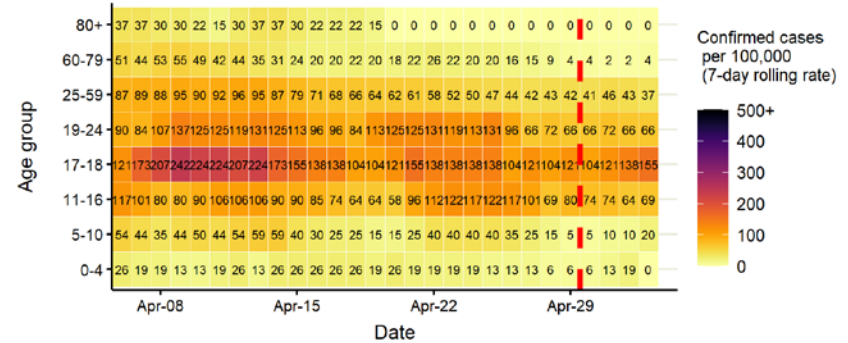
Daily cases from 1/10/2020: 60+ YEARS ONLY **NOTE: different y-axis scale**



4 days with incomplete data Pillar 1 Pillar 2 Total 7 day moving average (P1 + P2)



Age-stratified case rate heatmap for Rotherham: 6 Apr to 3 May 2021

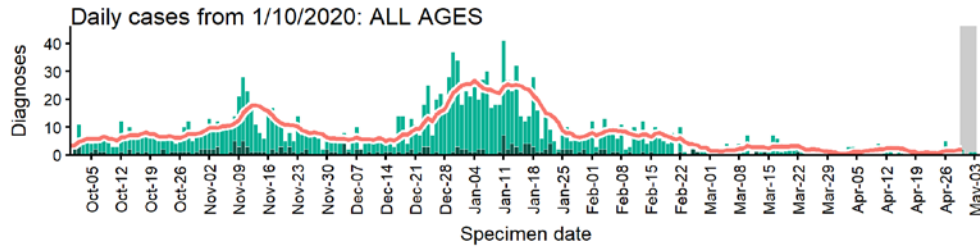


The red dashed line on the heatmaps show the last four days where data may be incomplete due to reporting delays and removal of LFDs with accompanying negative PCR results. Please consider this data provisional.

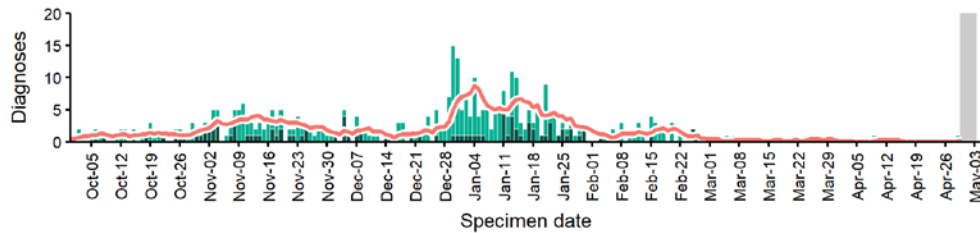
Data from SGSS. Produced by Outbreak Surveillance Team, PHE

Ryedale case numbers, testing numbers and positivity, 1 Oct to 3 May 2021

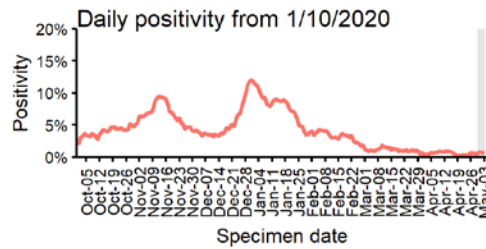
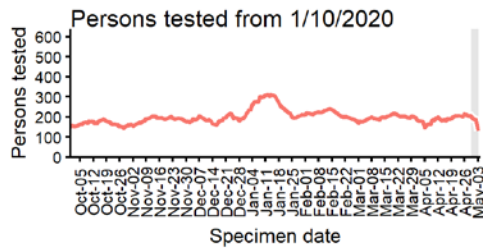
RYEDALE Cases and persons tested up to May 3 2021



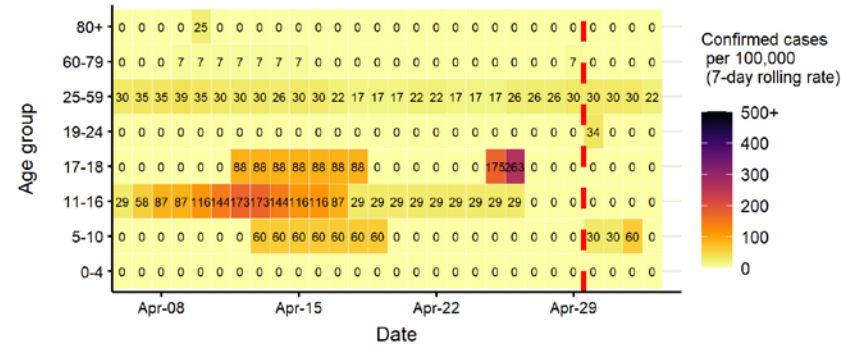
Daily cases from 1/10/2020: 60+ YEARS ONLY NOTE: different y-axis scale



4 days with incomplete data Pillar 1 Pillar 2 Total 7 day moving average (P1 + P2)



Age-stratified case rate heatmap for Ryedale: 6 Apr to 3 May 2021

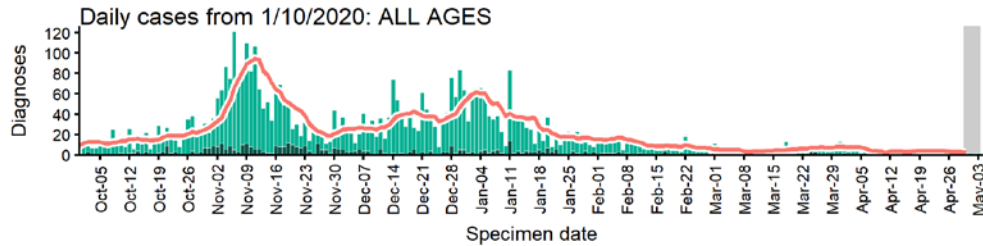


The red dashed line on the heatmaps show the last four days where data may be incomplete due to reporting delays and removal of LFDs with accompanying negative PCR results. Please consider this data provisional.

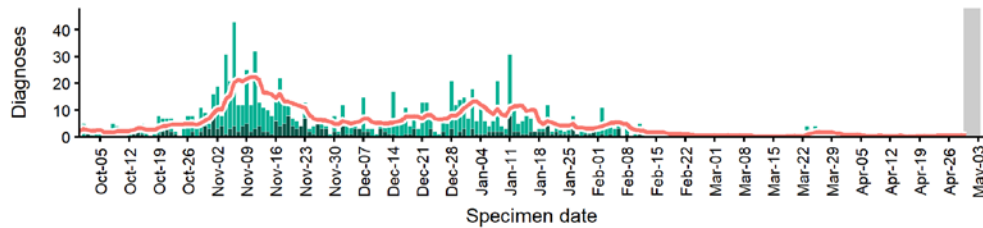
Data from SGSS. Produced by Outbreak Surveillance Team, PHE

Scarborough case numbers, testing numbers and positivity, 1 Oct to 3 May 2021

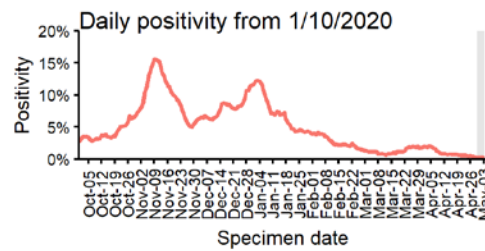
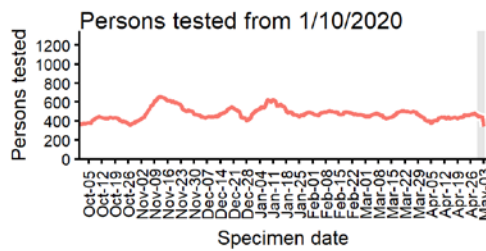
SCARBOROUGH Cases and persons tested up to May 3 2021



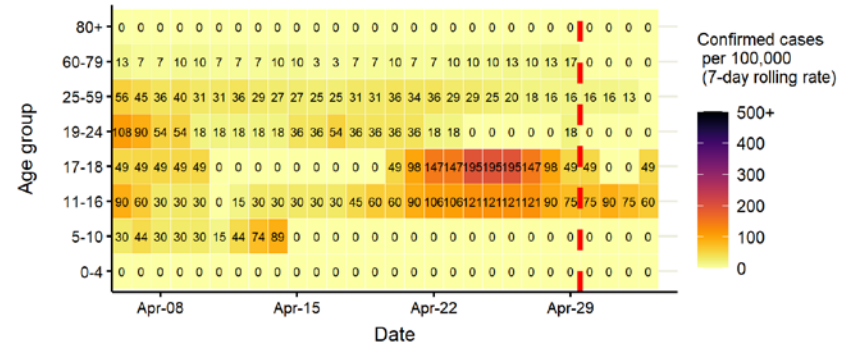
Daily cases from 1/10/2020: 60+ YEARS ONLY **NOTE: different y-axis scale**



4 days with incomplete data Pillar 1 Pillar 2 Total 7 day moving average (P1 + P2)



Age-stratified case rate heatmap for Scarborough: 6 Apr to 3 May 2021

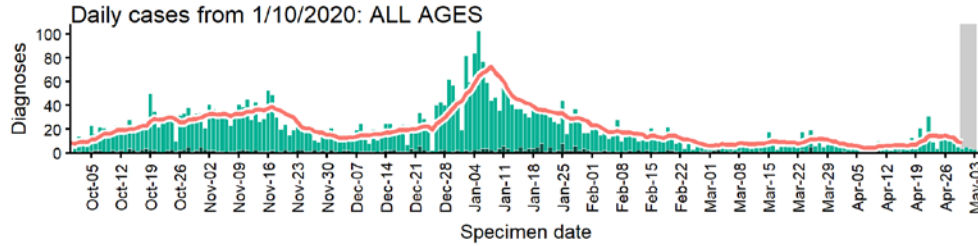


The red dashed line on the heatmaps show the last four days where data may be incomplete due to reporting delays and removal of LFDs with accompanying negative PCR results. Please consider this data provisional.

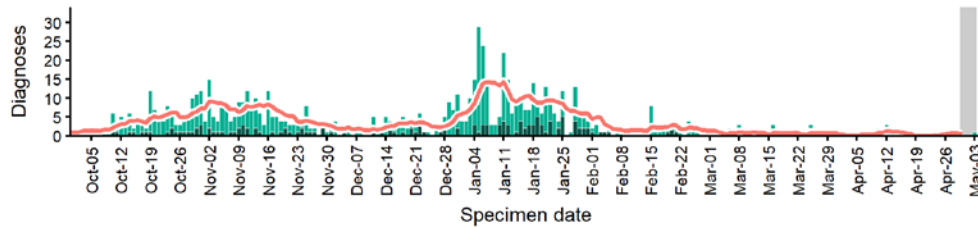
Data from SGSS. Produced by Outbreak Surveillance Team, PHE

Selby case numbers, testing numbers and positivity, 1 Oct to 3 May 2021

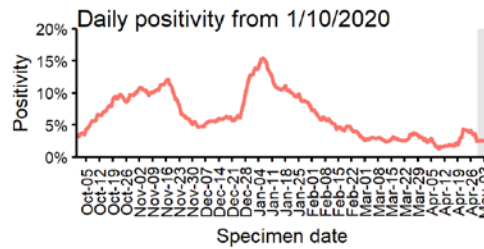
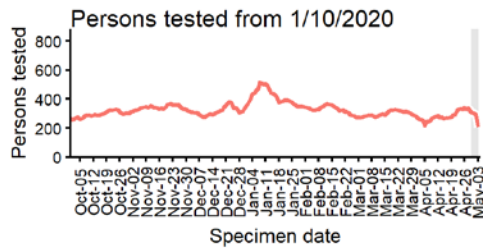
SELBY Cases and persons tested up to May 3 2021



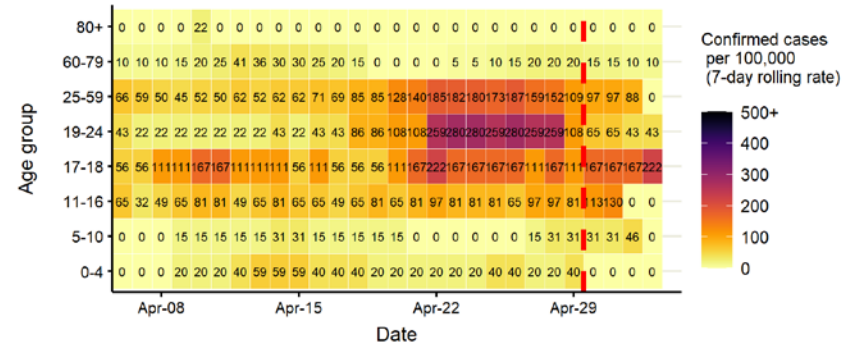
Daily cases from 1/10/2020: 60+ YEARS ONLY NOTE: different y-axis scale



4 days with incomplete data Pillar 1 Pillar 2 Total 7 day moving average (P1 + P2)



Age-stratified case rate heatmap for Selby: 6 Apr to 3 May 2021

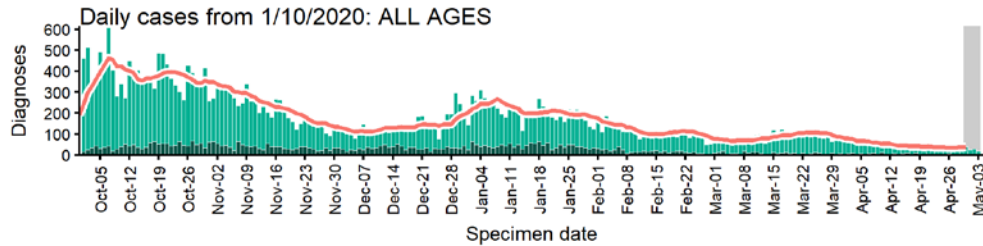


The red dashed line on the heatmaps show the last four days where data may be incomplete due to reporting delays and removal of LFDs with accompanying negative PCR results. Please consider this data provisional.

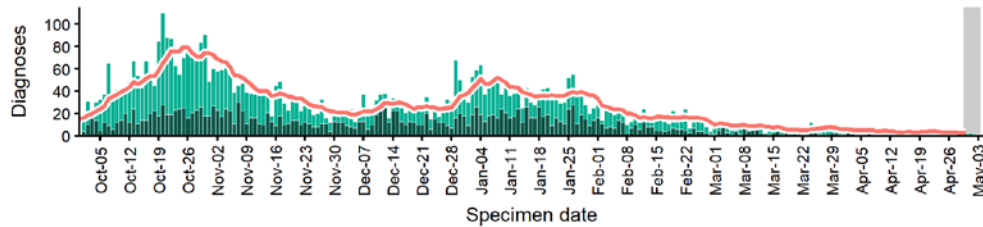
Data from SGSS. Produced by Outbreak Surveillance Team, PHE

Sheffield case numbers, testing numbers and positivity, 1 Oct to 3 May 2021

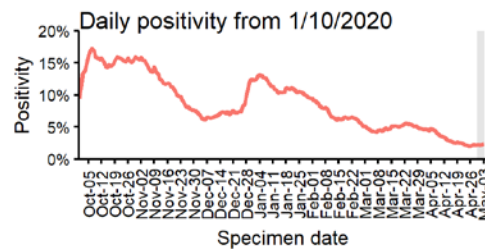
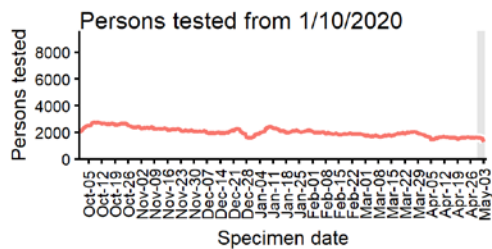
SHEFFIELD Cases and persons tested up to May 3 2021



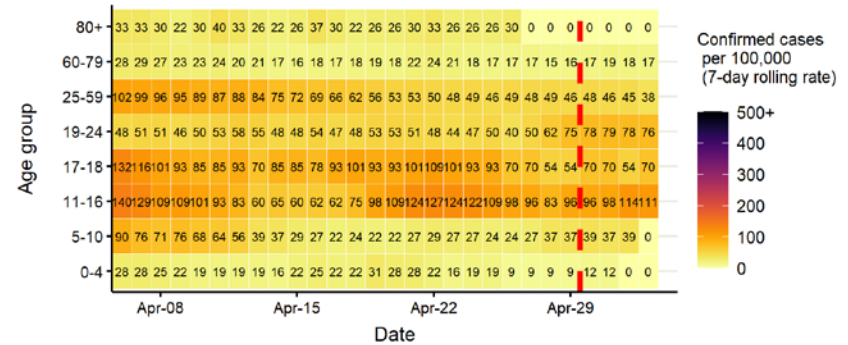
Daily cases from 1/10/2020: 60+ YEARS ONLY **NOTE: different y-axis scale**



4 days with incomplete data Pillar 1 Pillar 2 Total 7 day moving average (P1 + P2)



Age-stratified case rate heatmap for Sheffield: 6 Apr to 3 May 2021

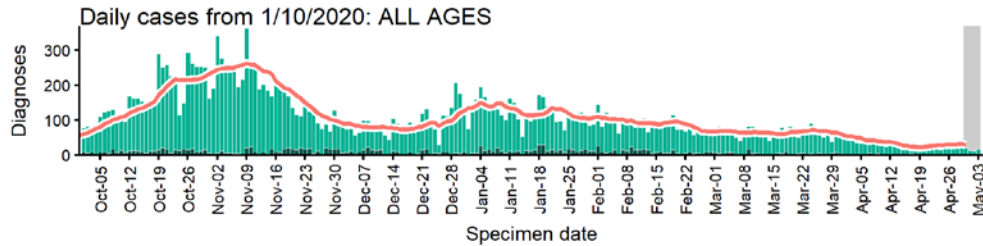


The red dashed line on the heatmaps show the last four days where data may be incomplete due to reporting delays and removal of LFDs with accompanying negative PCR results. Please consider this data provisional.

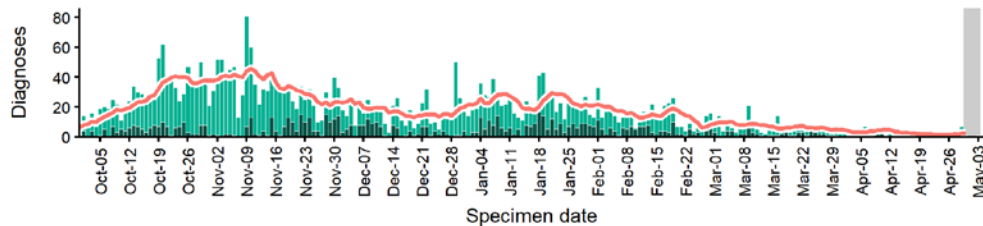
Data from SGSS. Produced by Outbreak Surveillance Team, PHE

Wakefield case numbers, testing numbers and positivity, 1 Oct to 3 May 2021

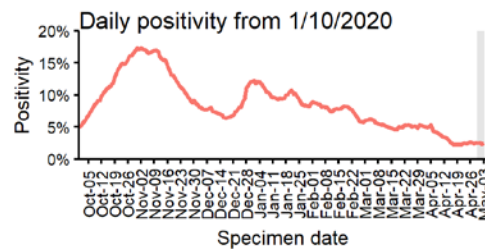
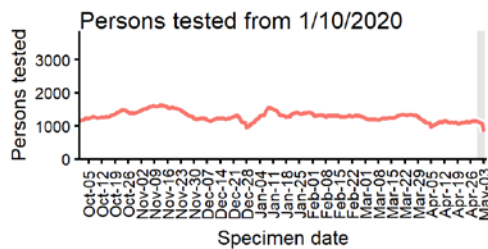
WAKEFIELD Cases and persons tested up to May 3 2021



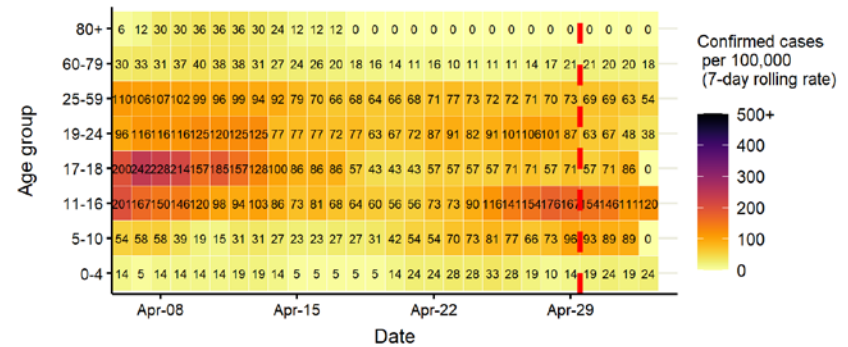
Daily cases from 1/10/2020: 60+ YEARS ONLY **NOTE: different y-axis scale**



4 days with incomplete data
 Pillar 1
 Pillar 2
 Total 7 day moving average (P1 + P2)



Age-stratified case rate heatmap for Wakefield: 6 Apr to 3 May 2021

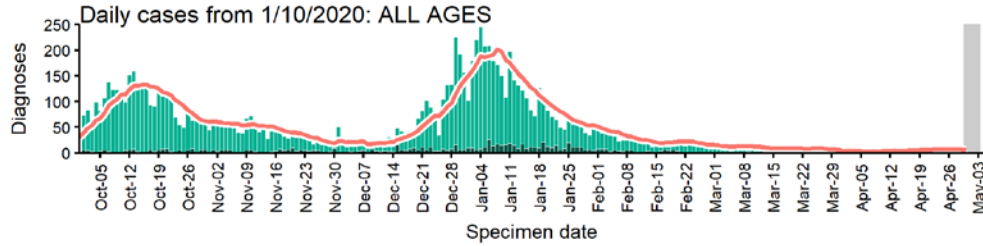


The red dashed line on the heatmaps show the last four days where data may be incomplete due to reporting delays and removal of LFDs with accompanying negative PCR results. Please consider this data provisional.

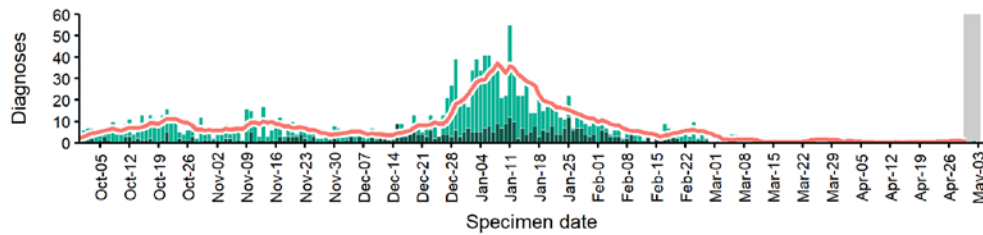
Data from SGSS. Produced by Outbreak Surveillance Team, PHE

York case numbers, testing numbers and positivity, 1 Oct to 3 May 2021

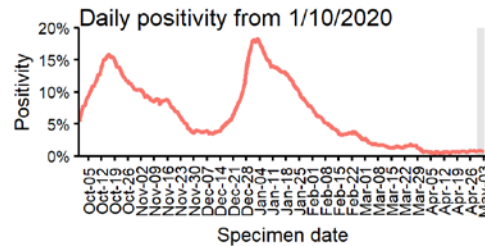
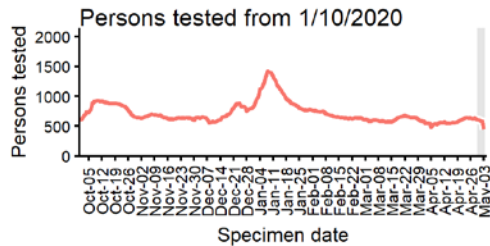
YORK Cases and persons tested up to May 3 2021



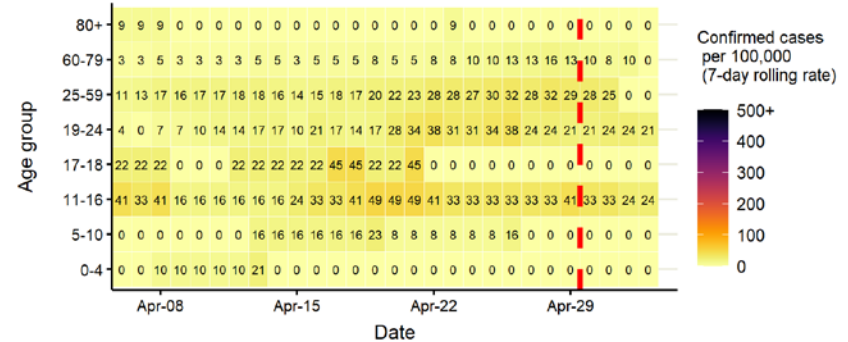
Daily cases from 1/10/2020: 60+ YEARS ONLY **NOTE: different y-axis scale**



4 days with incomplete data Pillar 1 Pillar 2 Total 7 day moving average (P1 + P2)



Age-stratified case rate heatmap for York: 6 Apr to 3 May 2021



The red dashed line on the heatmaps show the last four days where data may be incomplete due to reporting delays and removal of LFDs with accompanying negative PCR results. Please consider this data provisional.

Data from SGSS. Produced by Outbreak Surveillance Team, PHE

© Crown copyright 2020

www.gov.uk/dhsc

This publication is licensed under the terms of the Open Government Licence v3.0 except where otherwise stated. To view this licence, visit nationalarchives.gov.uk/doc/open-government-licence/version/3

Where we have identified any third party copyright information you will need to obtain permission from the copyright holders concerned.

OGI