



Department
of Health &
Social Care

North East lower tier local authority watchlist, epidemiological charts

Produced 4 May 2021

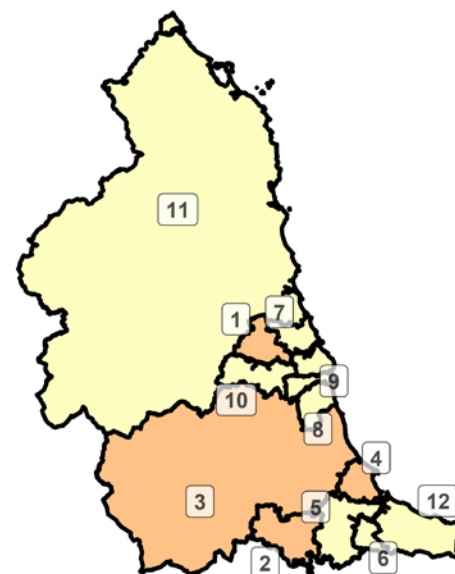
Notes

- This data is provided by Public Health England for the purpose of monitoring and supporting the management of Covid-19 infections in local authorities.
- The reports are produced using 2019 Office for National Statistics population data.
- If you would like to know the weekly trend for the case rate charts and persons tested chart please see lower tier local authority watchlist.

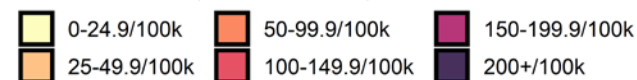
Weekly case rate per 100,000 population by local authority from 23 Apr to 29 Apr 2021

Rank	Local Authority	Case Rate (per 100,000)	Number of cases (1 week)
1	Newcastle upon Tyne	40.6	123
2	Darlington	31.8	34
3	County Durham	30.6	162
4	Hartlepool	25.6	24
5	Stockton-on-Tees	21.3	42
6	Middlesbrough	20.6	29
7	North Tyneside	19.7	41
8	Sunderland	18.4	51
9	South Tyneside	17.9	27
10	Gateshead	15.8	32
11	Northumberland	15.8	51
12	Redcar and Cleveland	13.9	19

North East
COVID-19 cases: 23 Apr to 29 Apr 2021
 Weekly case rates per 100,000 population by local authority



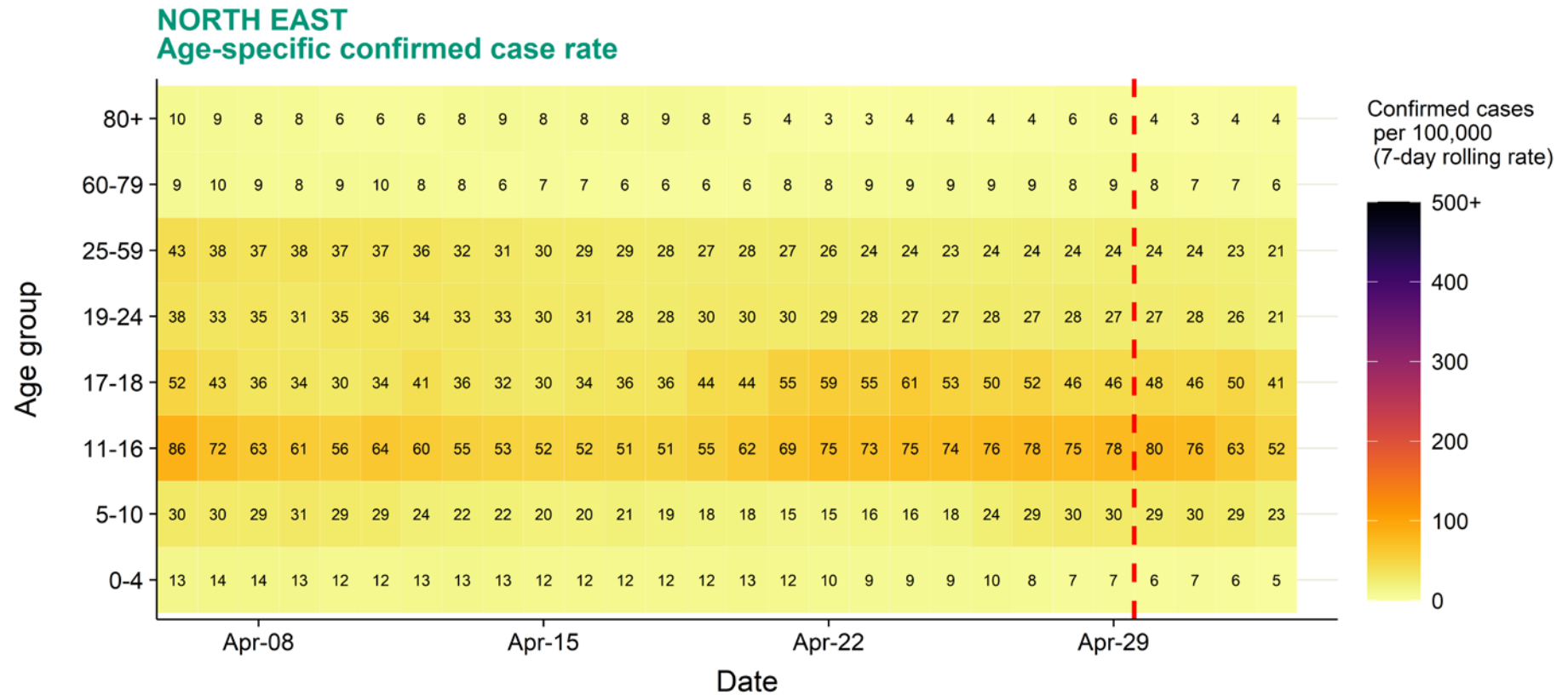
Covid-19 rate by local authority



Data from SGSS; Pillar 1 and 2 testing. Figure by Outbreak Surveillance Team, Public Health England.

Contains National Statistics data including 2019 population estimates Â© Crown copyright and database right 2020

North East age-stratified heatmap of weekly case rate, 6 Apr to 29 Apr 2021



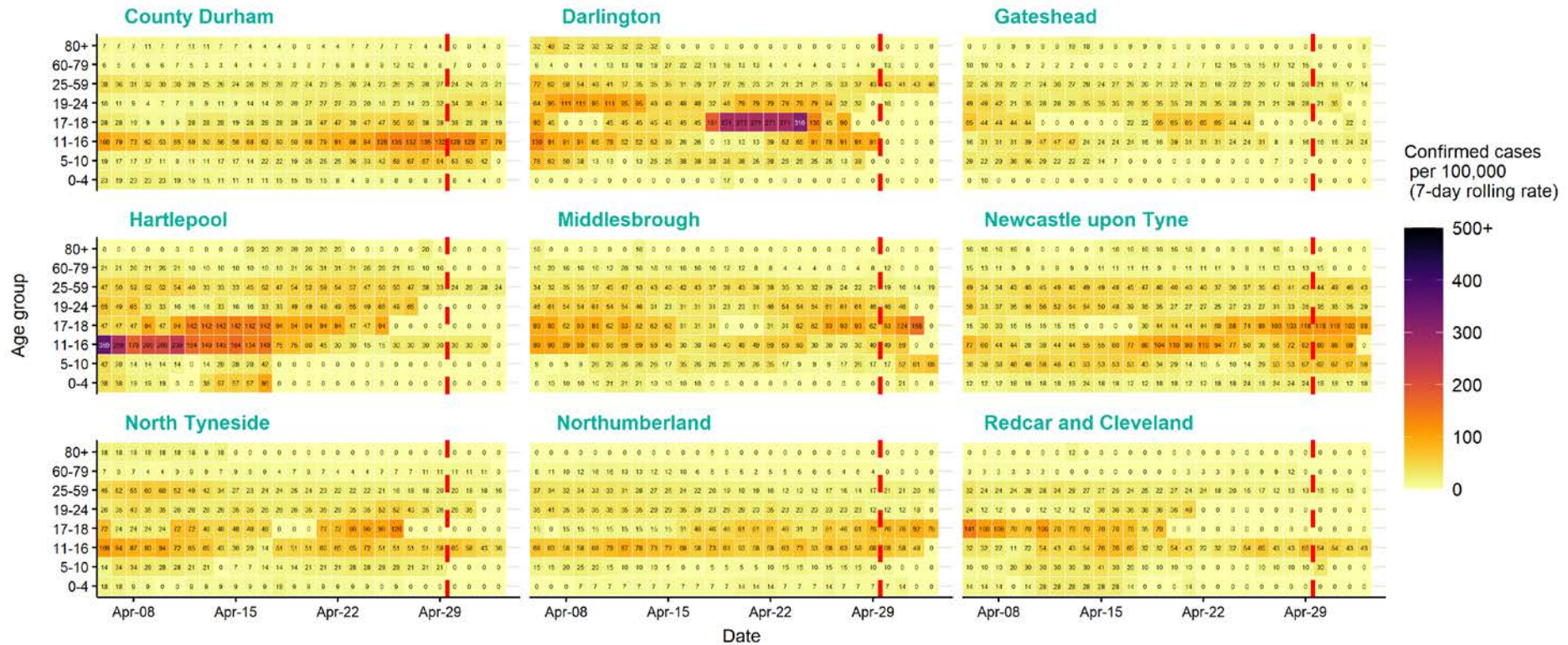
Source: Case data from SGSS. Produced by Outbreak Surveillance Team, PHE

The red dashed line on the heatmaps show the last four days where data may be incomplete due to reporting delays and removal of LFDs with accompanying negative PCR results.

Please consider this data provisional.

North East age-stratified heatmap of weekly case rate by local authority, 6 Apr to 29 Apr 2021

NORTH EAST LOCAL AUTHORITIES Age-specific confirmed case rate



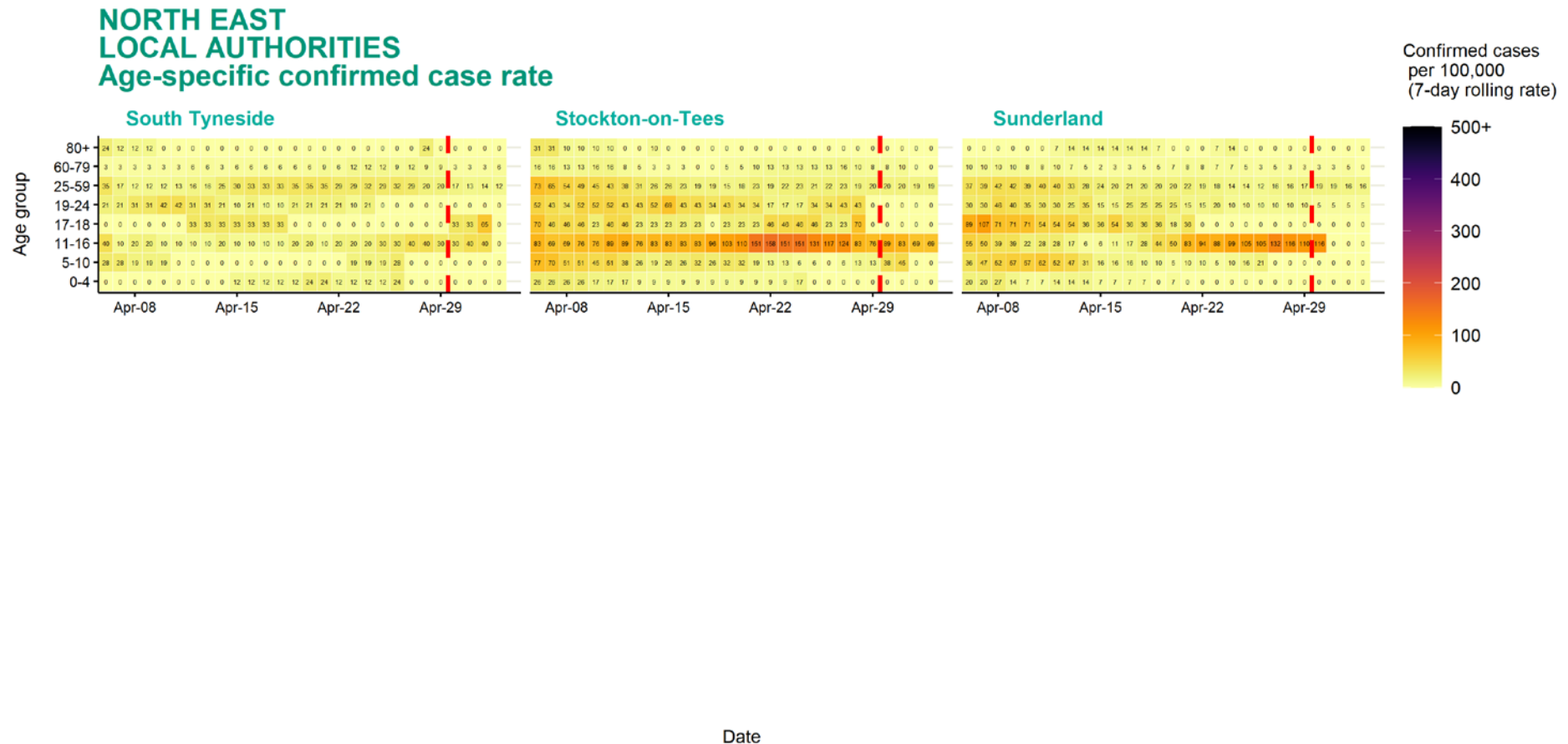
Source: Case data from SGSS. Produced by Outbreak Surveillance Team, PHE

The red dashed line on the heatmaps show the last four days where data may be incomplete due to reporting delays

and removal of LFDs with accompanying negative PCR results.

Please consider this data provisional.

North East age-stratified heatmap of weekly case rate by local authority, 6 Apr to 29 Apr 2021



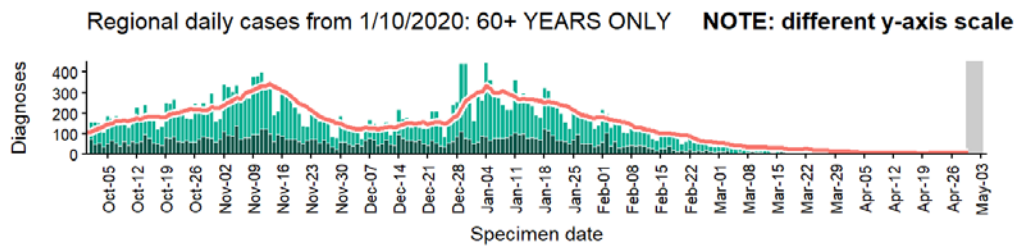
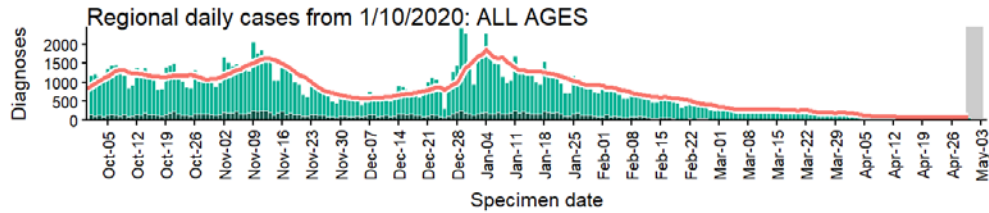
Source: Case data from SGSS. Produced by Outbreak Surveillance Team, PHE

The red dashed line on the heatmaps show the last four days where data may be incomplete due to reporting delays and removal of LFDs with accompanying negative PCR results.

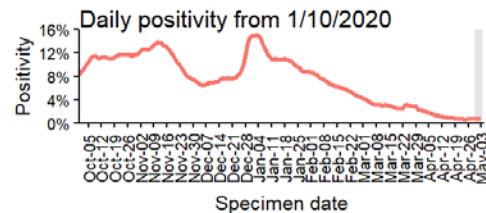
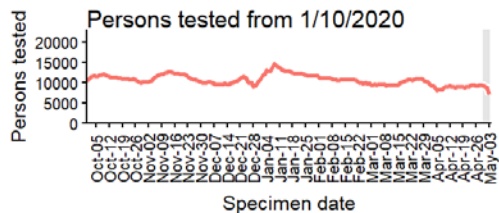
Please consider this data provisional.

North East regional case numbers, testing numbers and positivity, 1 Oct to 3 May 2021

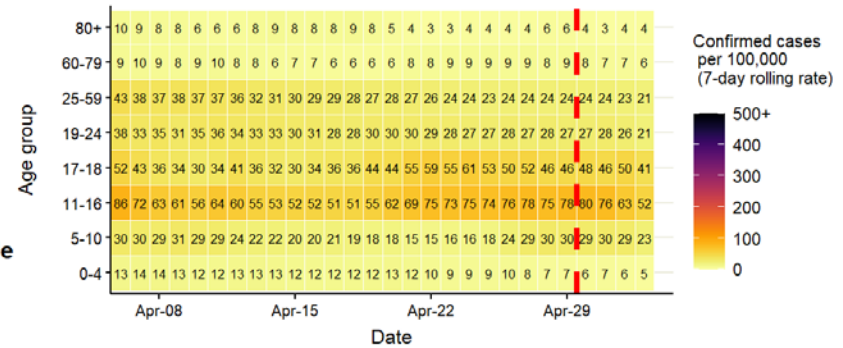
NORTH EAST Cases and persons tested up to May 3 2021



4 days with incomplete data Pillar 1 Pillar 2 Total 7 day moving average (P1 + P2)



Regional age-stratified case rate heatmap for North East: 6 Apr to 3 May 2021,



The red dotted line denotes the last four days, subject to reporting delays

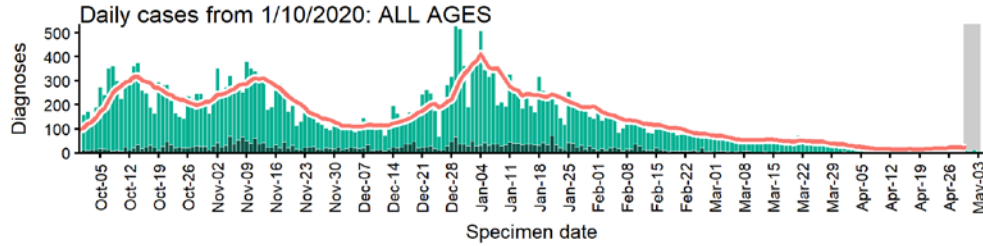
Data from SGSS. Produced by Outbreak Surveillance Team, PHE

The red dashed line on the heatmaps show the last four days where data may be incomplete due to reporting delays and removal of LFDs with accompanying negative PCR results.

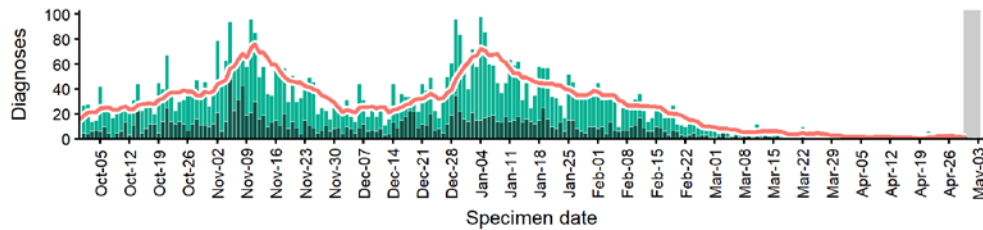
Please consider this data provisional.

County Durham case numbers, testing numbers and positivity, 1 Oct to 3 May 2021

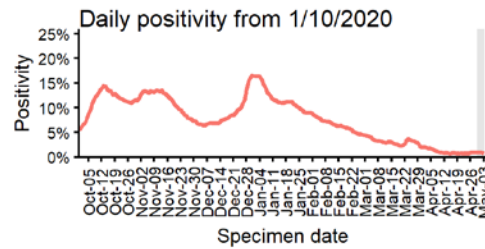
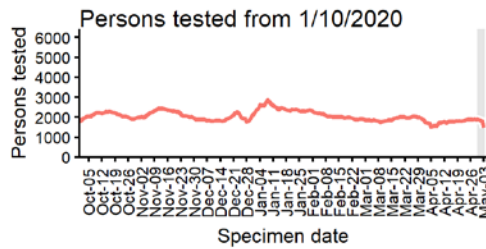
COUNTY DURHAM
Cases and persons tested up to May 3 2021



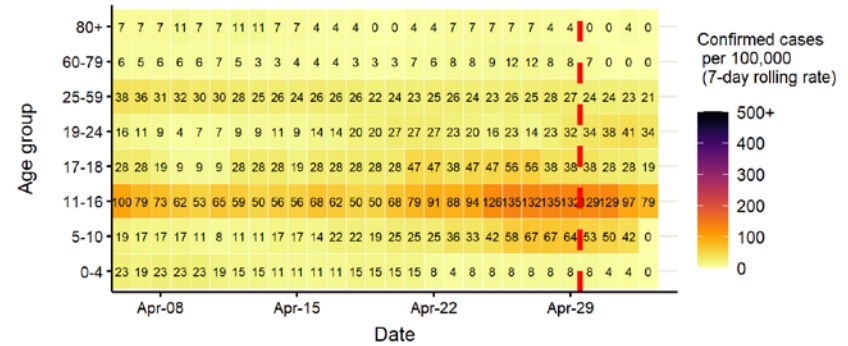
Daily cases from 1/10/2020: 60+ YEARS ONLY **NOTE: different y-axis scale**



4 days with incomplete data Pillar 1 Pillar 2 Total 7 day moving average (P1 + P2)



Age-stratified case rate heatmap for County Durham: 6 Apr to 3 May 2021

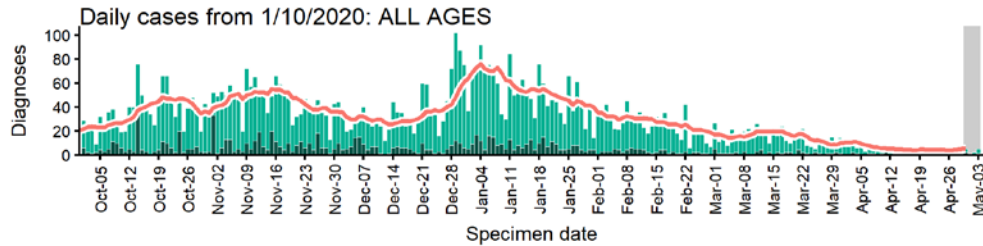


The red dashed line on the heatmaps show the last four days where data may be incomplete due to reporting delays and removal of LFDs with accompanying negative PCR results. Please consider this data provisional.

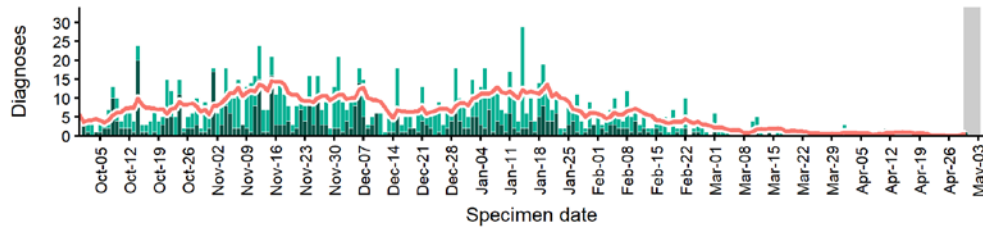
Data from SGSS. Produced by Outbreak Surveillance Team, PHE

Darlington case numbers, testing numbers and positivity, 1 Oct to 3 May 2021

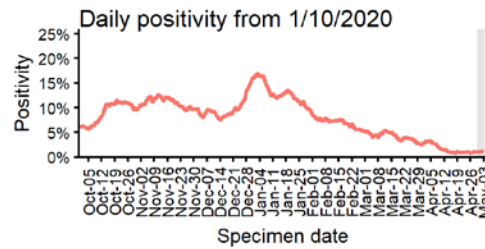
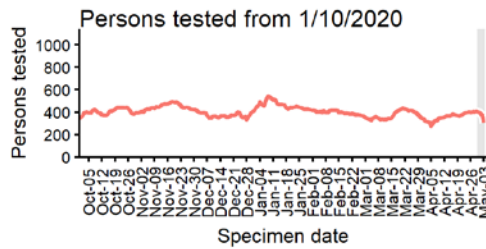
DARLINGTON Cases and persons tested up to May 3 2021



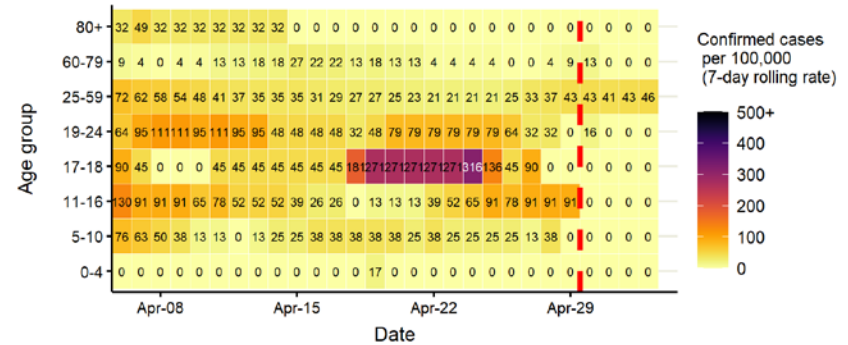
Daily cases from 1/10/2020: 60+ YEARS ONLY **NOTE: different y-axis scale**



4 days with incomplete data Pillar 1 Pillar 2 Total 7 day moving average (P1 + P2)



Age-stratified case rate heatmap for Darlington: 6 Apr to 3 May 2021

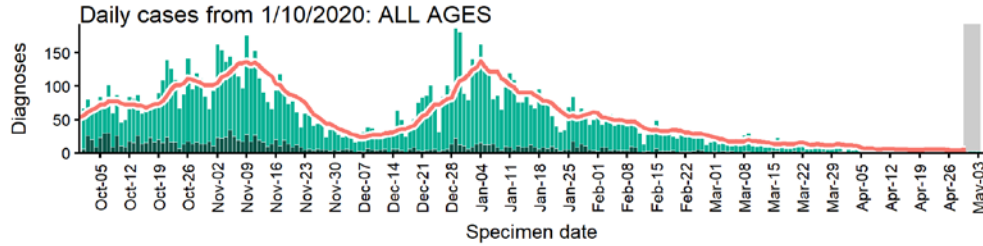


The red dashed line on the heatmaps show the last four days where data may be incomplete due to reporting delays and removal of LFDs with accompanying negative PCR results. Please consider this data provisional.

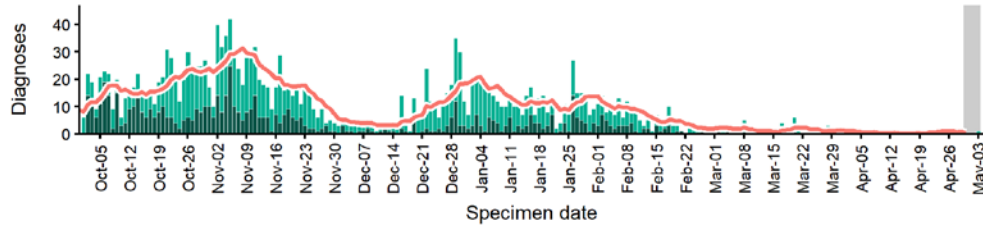
Data from SGSS. Produced by Outbreak Surveillance Team, PHE

Gateshead case numbers, testing numbers and positivity, 1 Oct to 3 May 2021

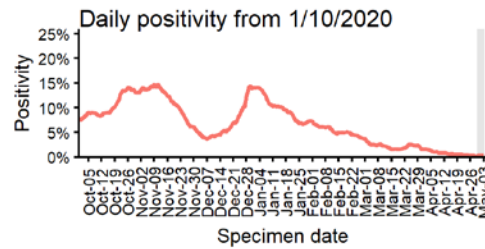
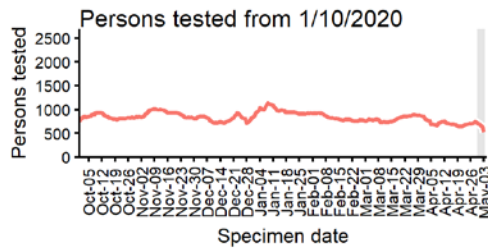
GATESHEAD
Cases and persons tested up to May 3 2021



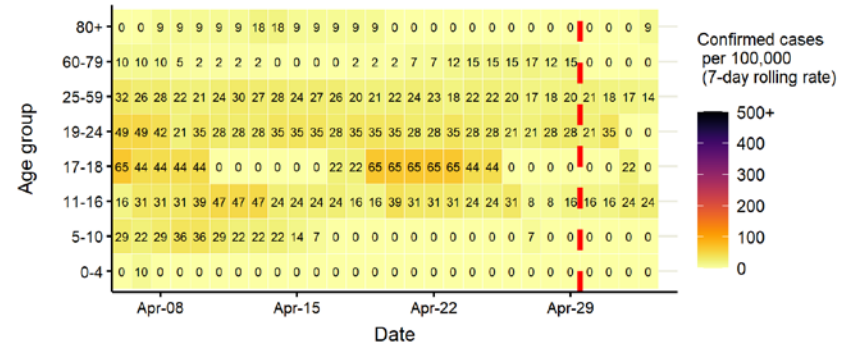
Daily cases from 1/10/2020: 60+ YEARS ONLY **NOTE: different y-axis scale**



4 days with incomplete data Pillar 1 Pillar 2 Total 7 day moving average (P1 + P2)



Age-stratified case rate heatmap for Gateshead: 6 Apr to 3 May 2021

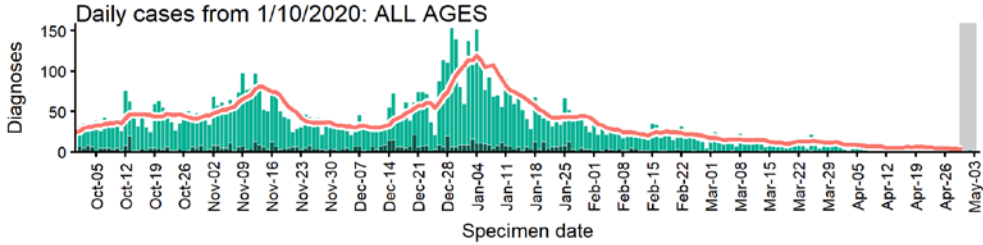


The red dashed line on the heatmaps show the last four days where data may be incomplete due to reporting delays and removal of LFDs with accompanying negative PCR results. Please consider this data provisional.

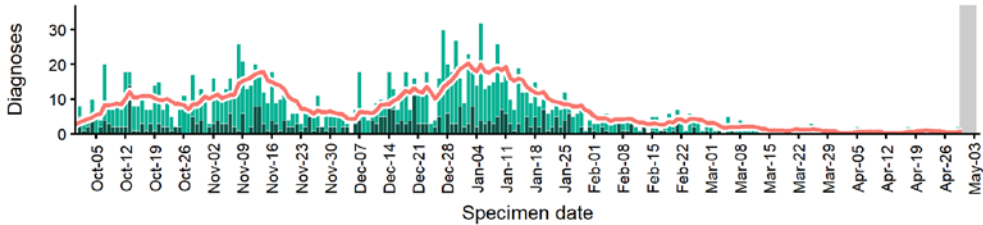
Data from SGSS. Produced by Outbreak Surveillance Team, PHE

Hartlepool case numbers, testing numbers and positivity, 1 Oct to 3 May 2021

HARTLEPOOL
Cases and persons tested up to May 3 2021

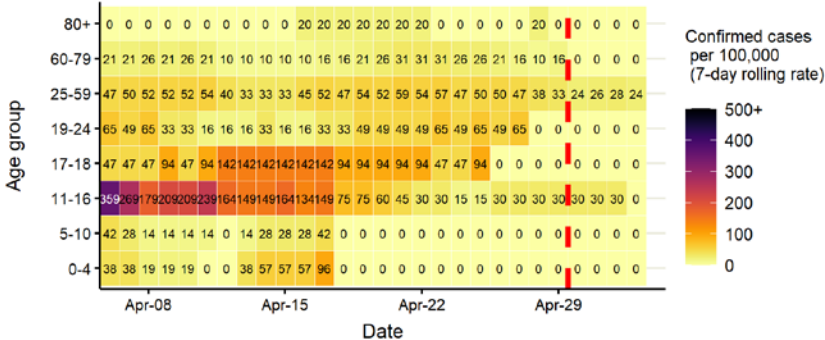


Daily cases from 1/10/2020: 60+ YEARS ONLY **NOTE: different y-axis scale**

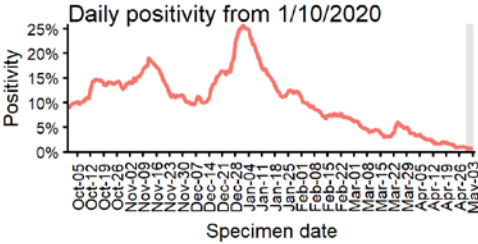
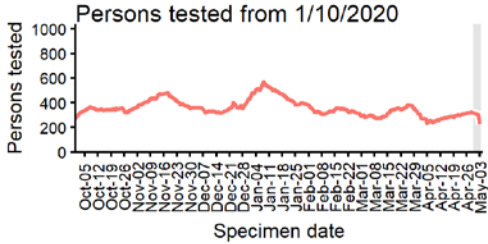


4 days with incomplete data Pillar 1 Pillar 2 Total 7 day moving average (P1 + P2)

Age-stratified case rate heatmap for Hartlepool: 6 Apr to 3 May 2021



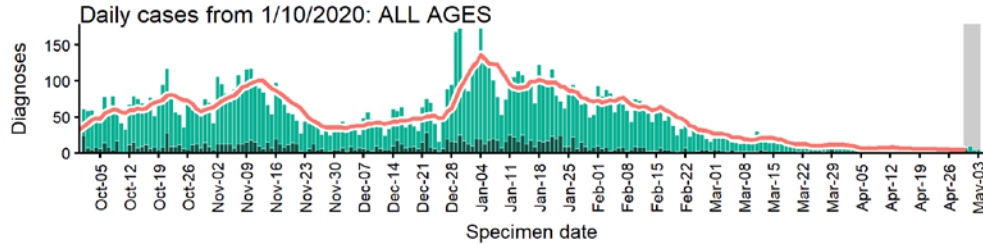
The red dashed line on the heatmaps show the last four days where data may be incomplete due to reporting delays and removal of LFDs with accompanying negative PCR results. Please consider this data provisional.



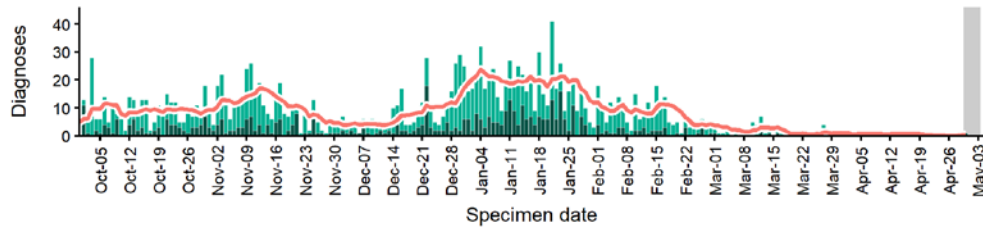
Data from SGSS. Produced by Outbreak Surveillance Team, PHE

Middlesbrough case numbers, testing numbers and positivity, 1 Oct to 3 May 2021

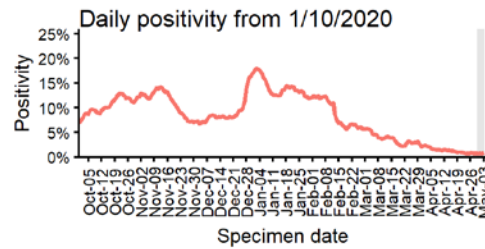
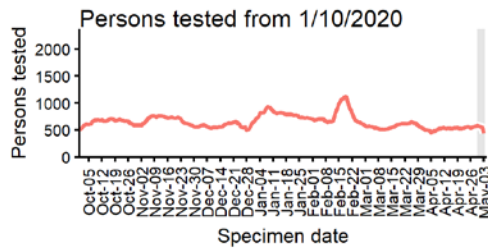
MIDDLESBROUGH Cases and persons tested up to May 3 2021



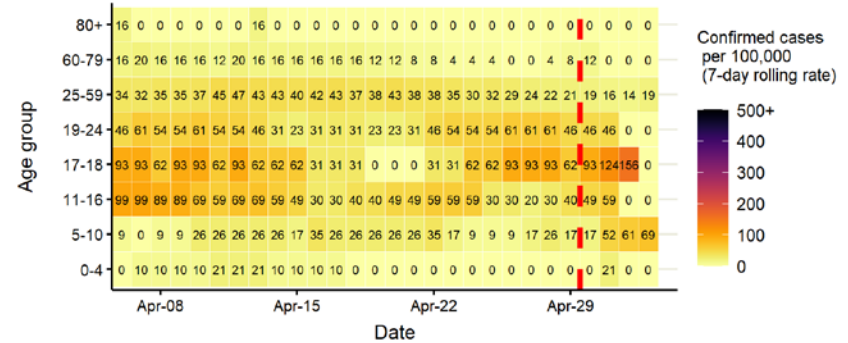
Daily cases from 1/10/2020: 60+ YEARS ONLY **NOTE: different y-axis scale**



4 days with incomplete data Pillar 1 Pillar 2 Total 7 day moving average (P1 + P2)



Age-stratified case rate heatmap for Middlesbrough: 6 Apr to 3 May 2021

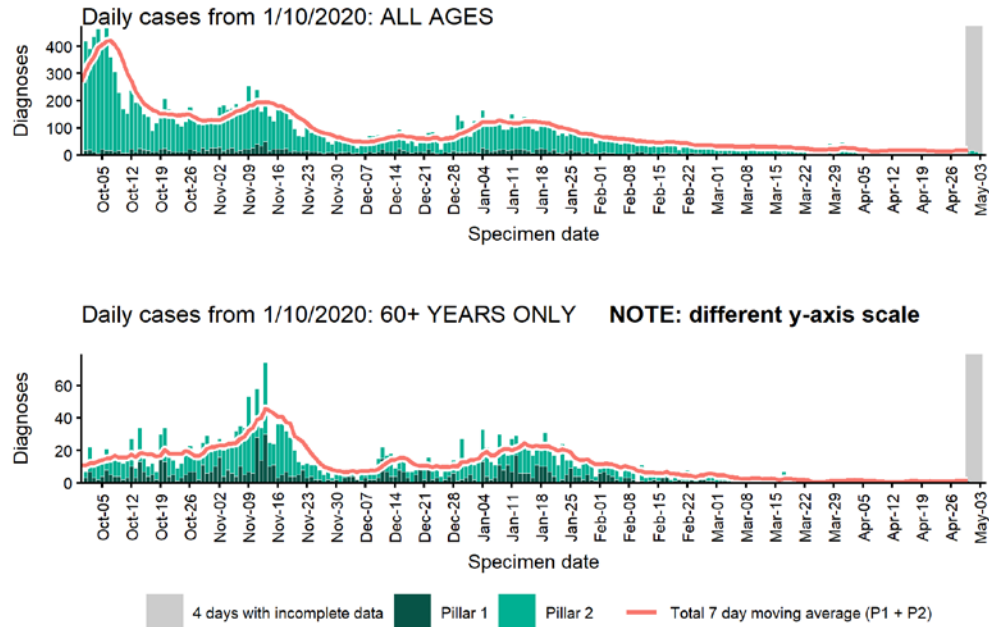


The red dashed line on the heatmaps show the last four days where data may be incomplete due to reporting delays and removal of LFDs with accompanying negative PCR results. Please consider this data provisional.

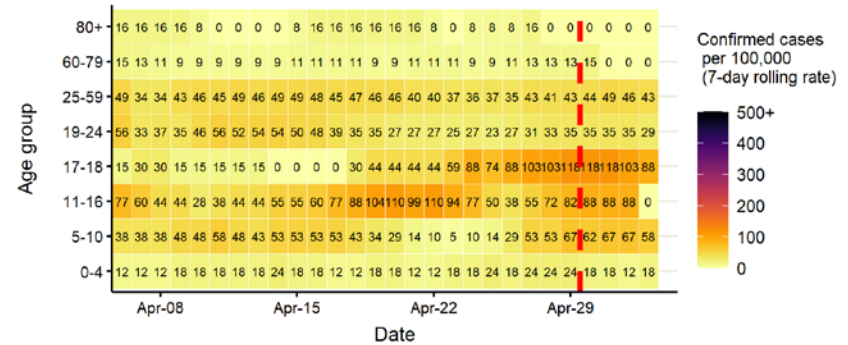
Data from SGSS. Produced by Outbreak Surveillance Team, PHE

Newcastle upon Tyne case numbers, testing numbers and positivity, 1 Oct to 3 May 2021

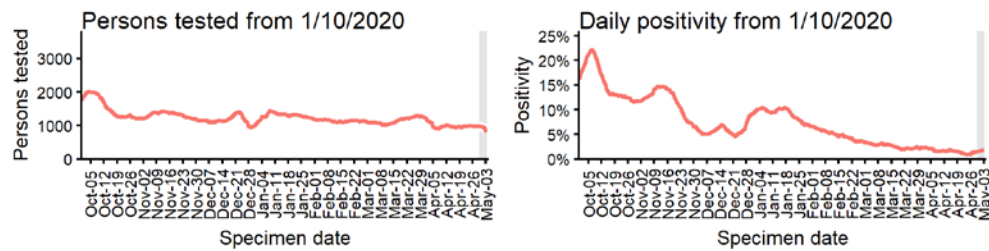
NEWCASTLE UPON TYNE
Cases and persons tested up to May 3 2021



Age-stratified case rate heatmap for Newcastle upon Tyne: 6 Apr to 3 May 2021



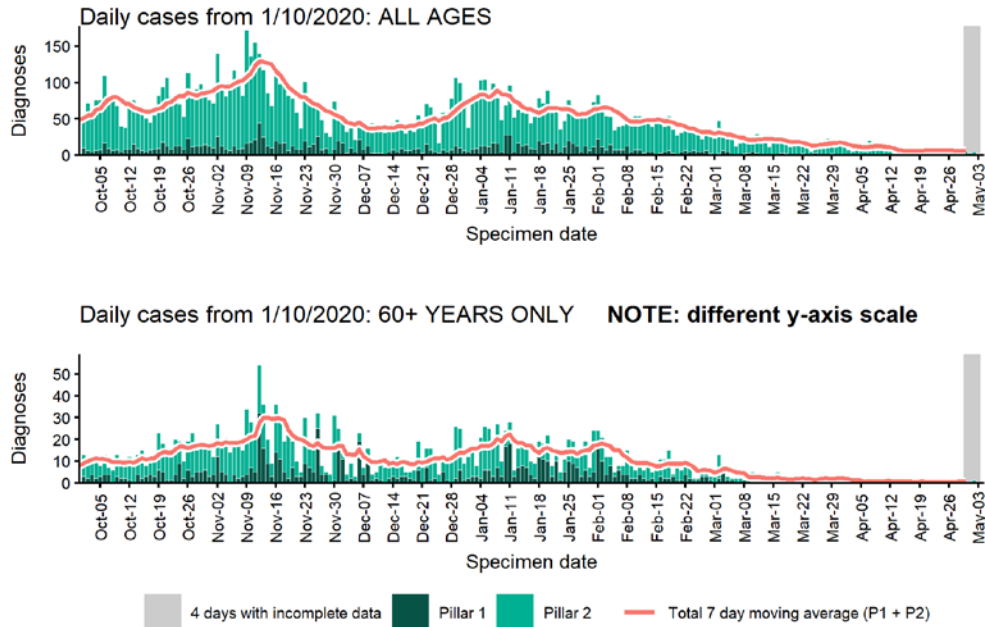
The red dashed line on the heatmaps show the last four days where data may be incomplete due to reporting delays and removal of LFDs with accompanying negative PCR results. Please consider this data provisional.



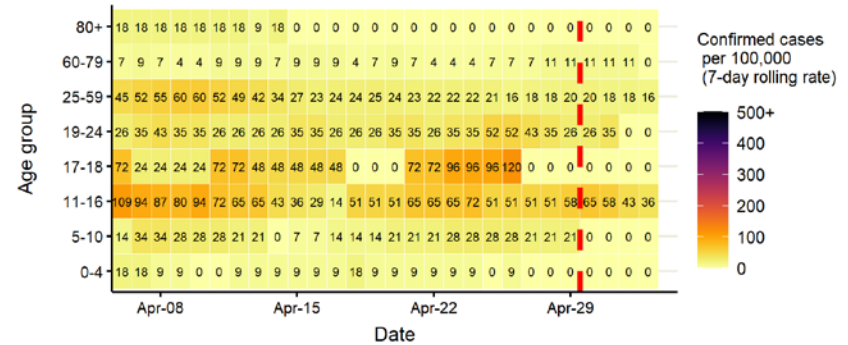
Data from SGSS. Produced by Outbreak Surveillance Team, PHE

North Tyneside case numbers, testing numbers and positivity, 1 Oct to 3 May 2021

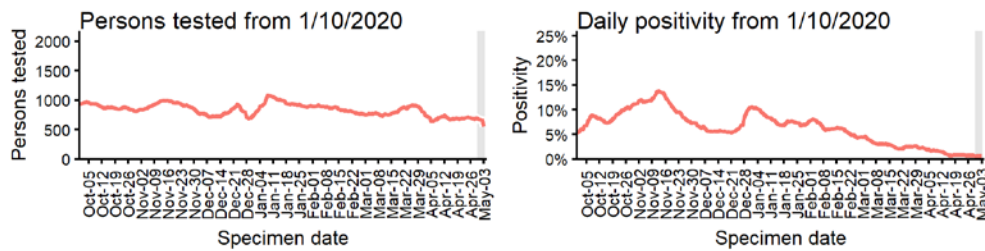
NORTH TYNESIDE
Cases and persons tested up to May 3 2021



Age-stratified case rate heatmap for North Tyneside: 6 Apr to 3 May 2021



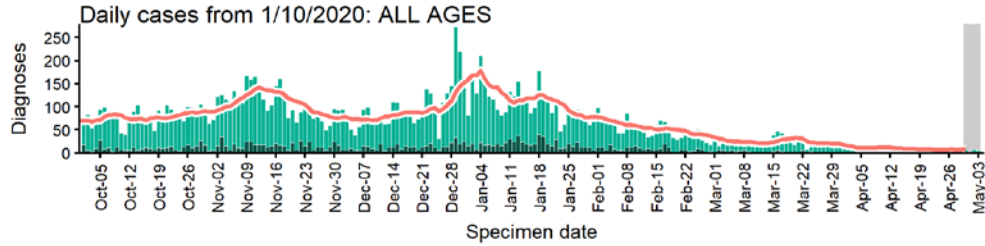
The red dashed line on the heatmaps show the last four days where data may be incomplete due to reporting delays and removal of LFDs with accompanying negative PCR results. Please consider this data provisional.



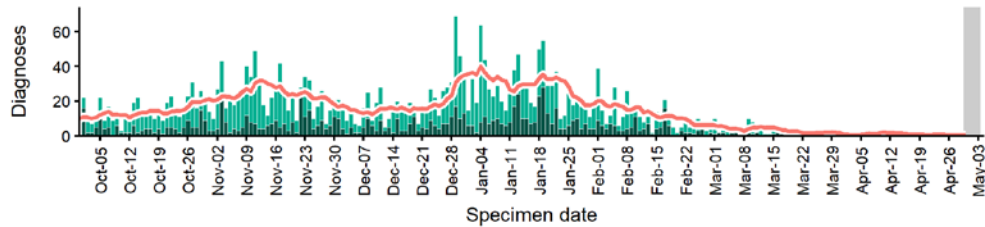
Data from SGSS. Produced by Outbreak Surveillance Team, PHE

Northumberland case numbers, testing numbers and positivity, 1 Oct to 3 May 2021

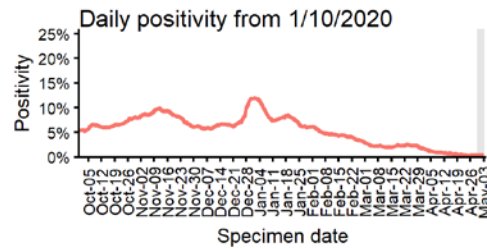
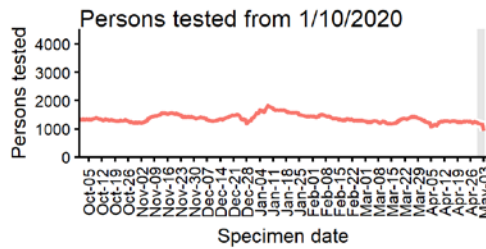
NORTHUMBERLAND
Cases and persons tested up to May 3 2021



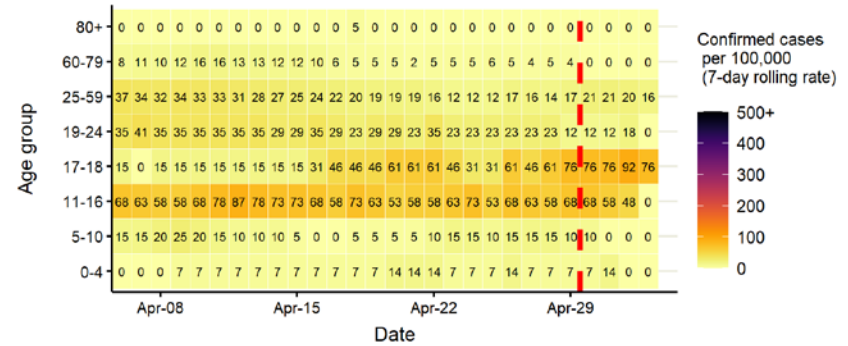
Daily cases from 1/10/2020: 60+ YEARS ONLY **NOTE: different y-axis scale**



4 days with incomplete data Pillar 1 Pillar 2 Total 7 day moving average (P1 + P2)



Age-stratified case rate heatmap for Northumberland: 6 Apr to 3 May 2021

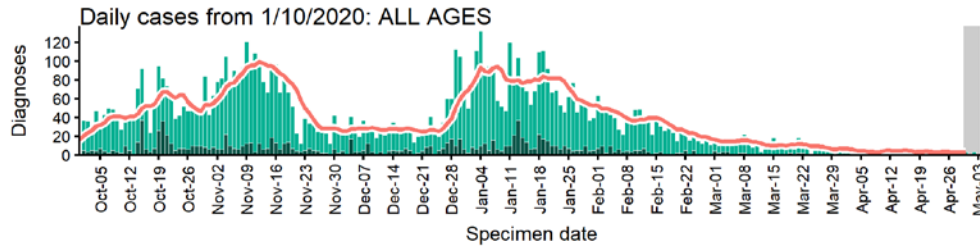


The red dashed line on the heatmaps show the last four days where data may be incomplete due to reporting delays and removal of LFDs with accompanying negative PCR results. Please consider this data provisional.

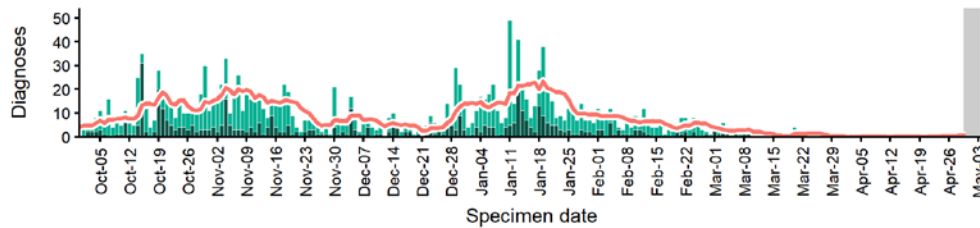
Data from SGSS. Produced by Outbreak Surveillance Team, PHE

Redcar and Cleveland case numbers, testing numbers and positivity, 1 Oct to 3 May 2021

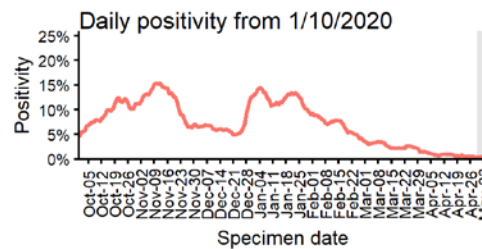
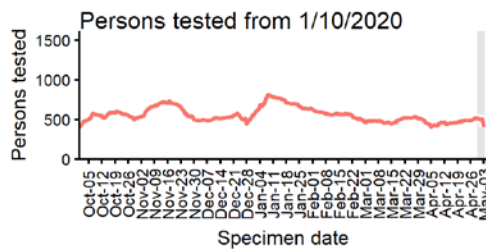
REDCAR AND CLEVELAND Cases and persons tested up to May 3 2021



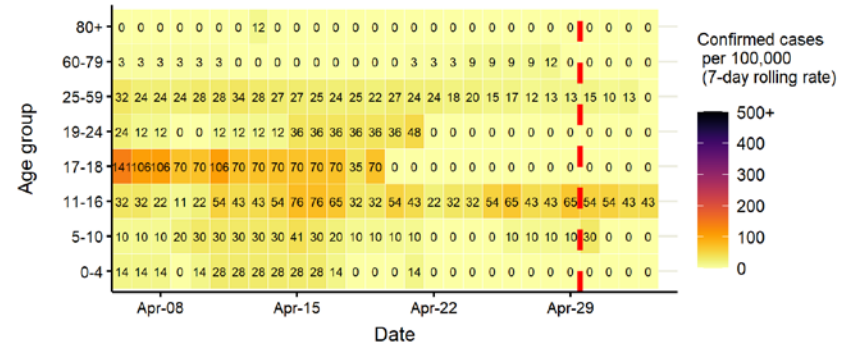
Daily cases from 1/10/2020: 60+ YEARS ONLY **NOTE: different y-axis scale**



4 days with incomplete data Pillar 1 Pillar 2 Total 7 day moving average (P1 + P2)



Age-stratified case rate heatmap for Redcar and Cleveland: 6 Apr to 3 May 2021

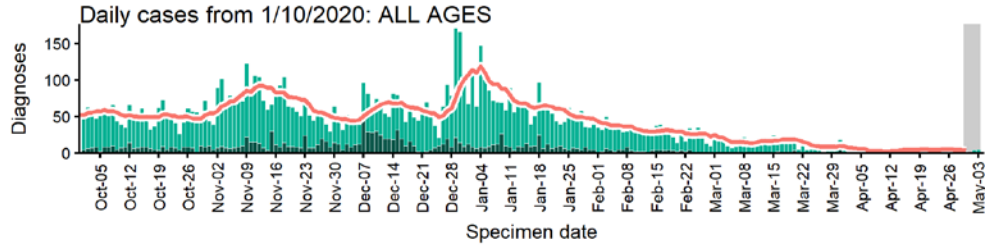


The red dashed line on the heatmaps show the last four days where data may be incomplete due to reporting delays and removal of LFDs with accompanying negative PCR results. Please consider this data provisional.

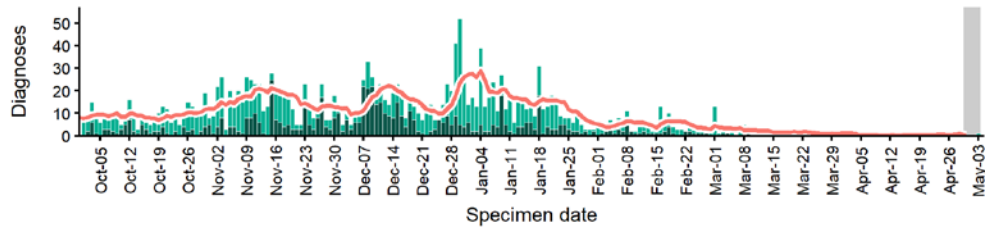
Data from SGSS. Produced by Outbreak Surveillance Team, PHE

South Tyneside case numbers, testing numbers and positivity, 1 Oct to 3 May 2021

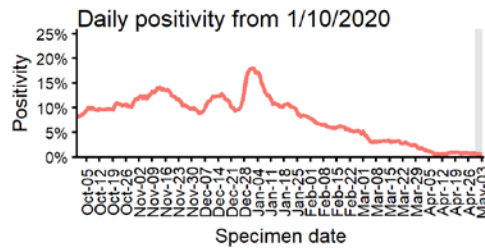
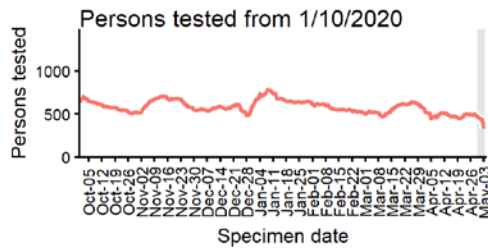
SOUTH TYNESIDE
Cases and persons tested up to May 3 2021



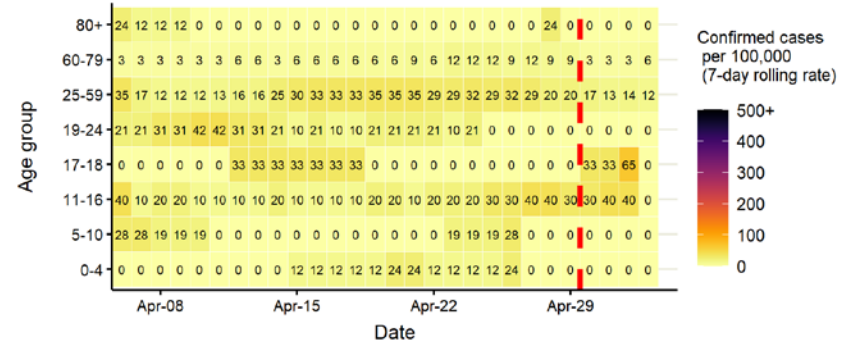
Daily cases from 1/10/2020: 60+ YEARS ONLY **NOTE: different y-axis scale**



4 days with incomplete data Pillar 1 Pillar 2 Total 7 day moving average (P1 + P2)



Age-stratified case rate heatmap for South Tyneside: 6 Apr to 3 May 2021

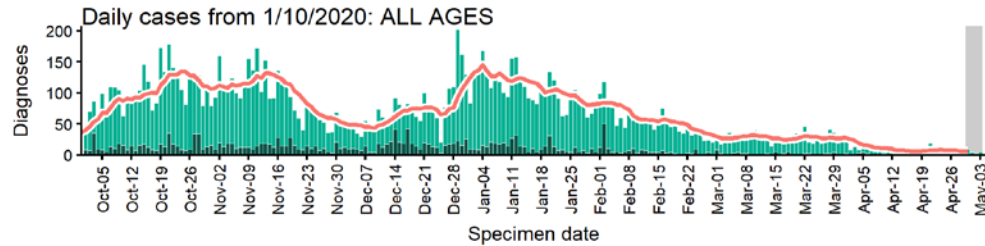


The red dashed line on the heatmaps show the last four days where data may be incomplete due to reporting delays and removal of LFDs with accompanying negative PCR results. Please consider this data provisional.

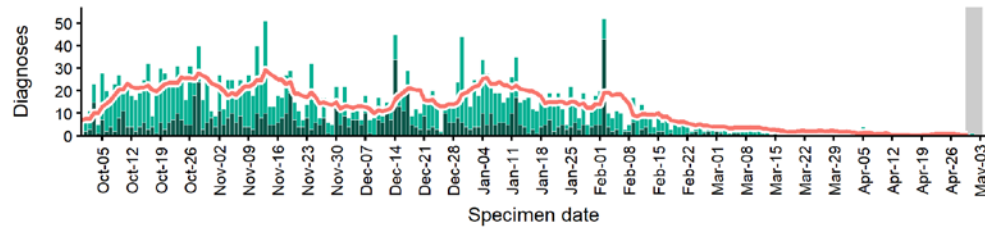
Data from SGSS. Produced by Outbreak Surveillance Team, PHE

Stockton-on-Tees case numbers, testing numbers and positivity, 1 Oct to 3 May 2021

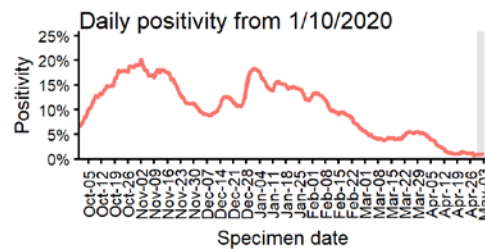
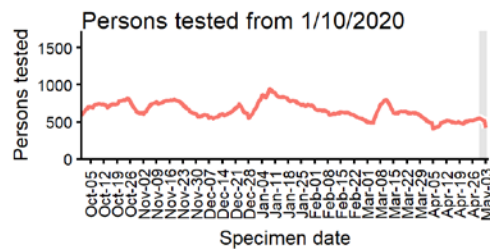
STOCKTON-ON-TEES Cases and persons tested up to May 3 2021



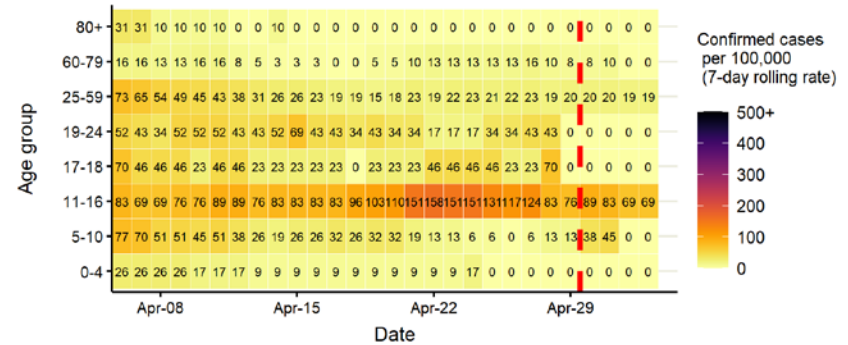
Daily cases from 1/10/2020: 60+ YEARS ONLY **NOTE: different y-axis scale**



4 days with incomplete data
 Pillar 1
 Pillar 2
 Total 7 day moving average (P1 + P2)



Age-stratified case rate heatmap for Stockton-on-Tees: 6 Apr to 3 May 2021

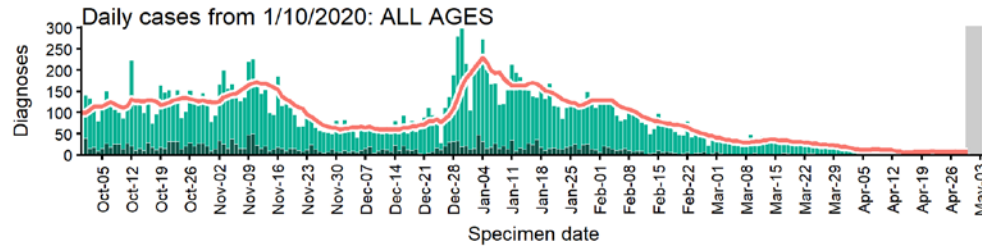


The red dashed line on the heatmaps show the last four days where data may be incomplete due to reporting delays and removal of LFDs with accompanying negative PCR results. Please consider this data provisional.

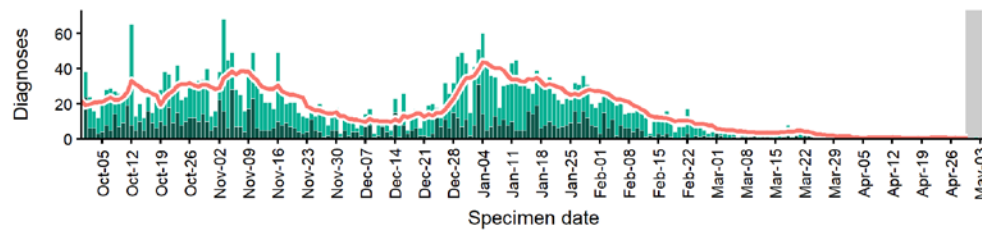
Data from SGSS. Produced by Outbreak Surveillance Team, PHE

Sunderland case numbers, testing numbers and positivity, 1 Oct to 3 May 2021

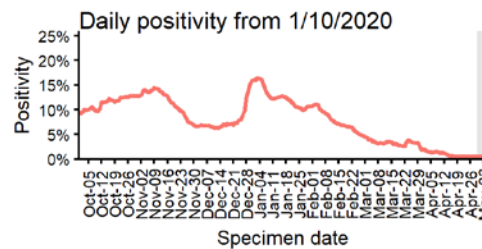
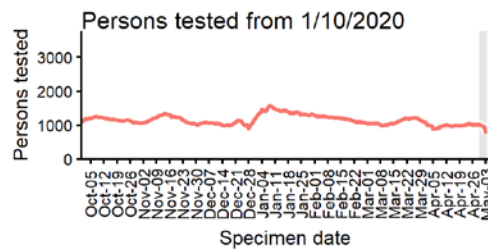
SUNDERLAND
Cases and persons tested up to May 3 2021



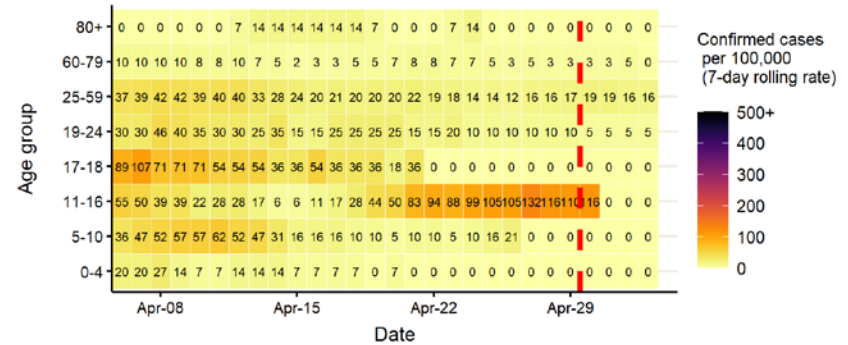
Daily cases from 1/10/2020: 60+ YEARS ONLY **NOTE: different y-axis scale**



4 days with incomplete data Pillar 1 Pillar 2 Total 7 day moving average (P1 + P2)



Age-stratified case rate heatmap for Sunderland: 6 Apr to 3 May 2021



The red dashed line on the heatmaps show the last four days where data may be incomplete due to reporting delays and removal of LFDs with accompanying negative PCR results. Please consider this data provisional.

Data from SGSS. Produced by Outbreak Surveillance Team, PHE

© Crown copyright 2020

www.gov.uk/dhsc

This publication is licensed under the terms of the Open Government Licence v3.0 except where otherwise stated. To view this licence, visit nationalarchives.gov.uk/doc/open-government-licence/version/3

Where we have identified any third party copyright information you will need to obtain permission from the copyright holders concerned.

OGL