



Department
of Health &
Social Care

West Midlands lower tier local authority watchlist, epidemiological charts

Produced 26 April 2021

Notes

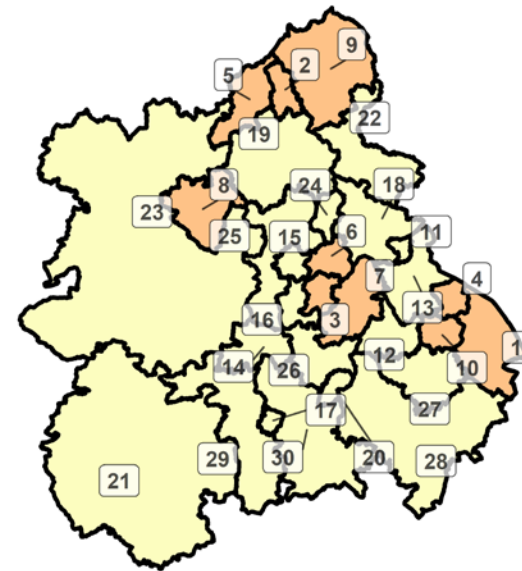
- This data is provided by Public Health England for the purpose of monitoring and supporting the management of Covid-19 infections in local authorities.
- The reports are produced using 2019 Office for National Statistics population data.
- If you would like to know the weekly trend for the case rate charts and persons tested chart please see lower tier local authority watchlist.

Weekly case rate per 100,000 population by local authority from 15 Apr to 21 Apr 2021

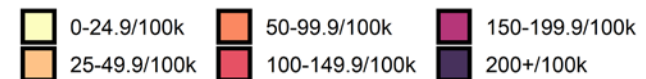
Rank	Local Authority	Case Rate (per 100,000)	Number of cases (1 week)
1	Rugby	43.1	47
2	Stoke-on-Trent	41.7	107
3	Sandwell	40.8	134
4	Nuneaton and Bedworth	31.6	41
5	Newcastle-under-Lyme	29.4	38
6	Walsall	28.0	80
7	Birmingham	26.8	306
8	Telford and Wrekin	26.7	48
9	Staffordshire Moorlands	26.4	26
10	Coventry	25.3	94
11	Tamworth	23.5	18
12	Solihull	23.1	50
13	North Warwickshire	23.0	15
14	Wyre Forest	22.7	23
15	Wolverhampton	22.4	59

Rank	Local Authority	Case Rate (per 100,000)	Number of cases (1 week)
16	Dudley	21.8	70
17	Worcester	21.7	22
18	Lichfield	19.1	20
19	Stafford	18.9	26
20	Redditch	18.8	16
21	Herefordshire, County of	17.6	34
22	East Staffordshire	16.7	20
23	Shropshire	16.7	54
24	Cannock Chase	13.9	14
25	South Staffordshire	13.3	15
26	Bromsgrove	13.0	13
27	Warwick	12.5	18
28	Stratford-on-Avon	11.5	15
29	Malvern Hills	11.4	9
30	Wychavon	10.0	13

West Midlands
COVID-19 cases: 15 Apr to 21 Apr 2021
 Weekly case rates per 100,000 population by local authority



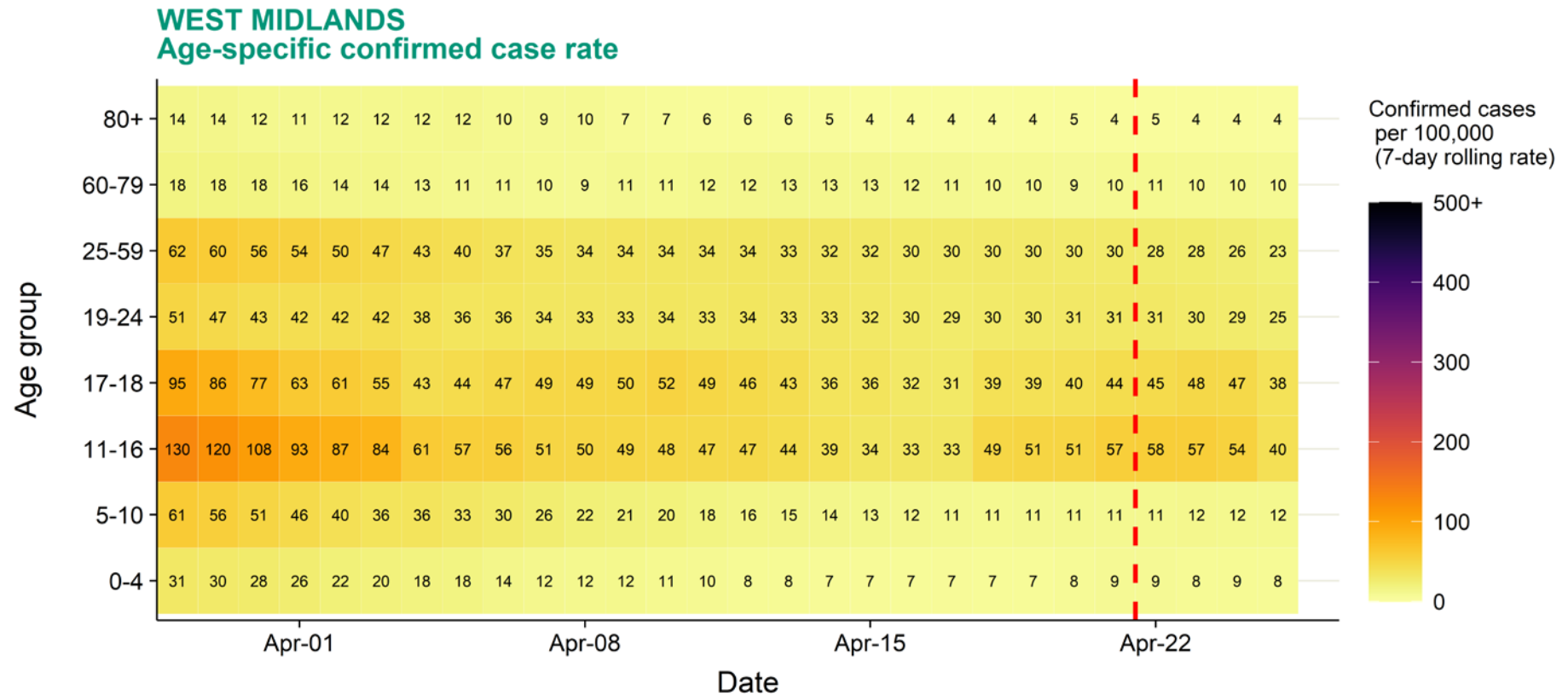
Covid-19 rate by local authority



Data from SGSS; Pillar 1 and 2 testing. Figure by Outbreak Surveillance Team, Public Health England.

Contains National Statistics data including 2019 population estimates Â© Crown copyright and database right 2020

West Midlands age-stratified heatmap of weekly case rate, 29 Mar to 21 Apr 2021



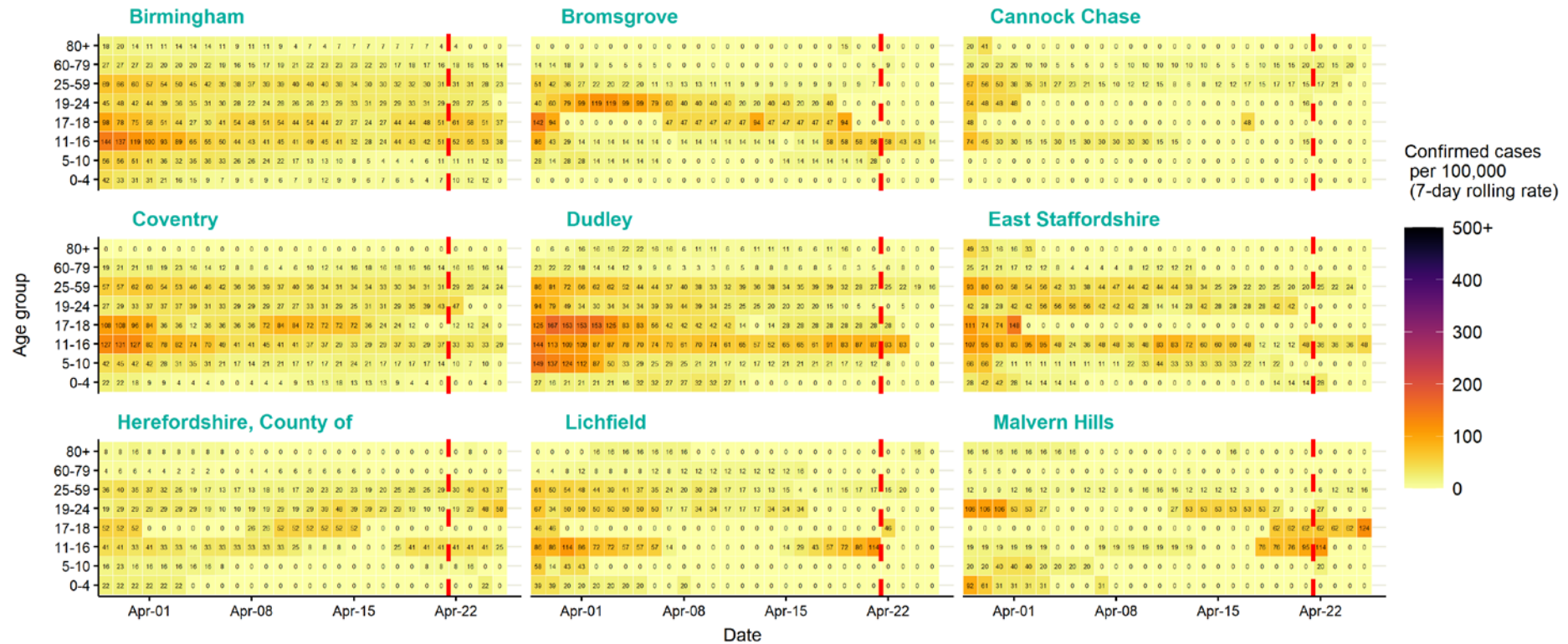
Source: Case data from SGSS. Produced by Outbreak Surveillance Team, PHE

The red dashed line on the heatmaps show the last four days where data may be incomplete due to reporting delays and removal of LFDs with accompanying negative PCR results.

Please consider this data provisional.

West Midlands age-stratified heatmap of weekly case rate by local authority, 29 Mar to 21 Apr 2021

WEST MIDLANDS LOCAL AUTHORITIES Age-specific confirmed case rate



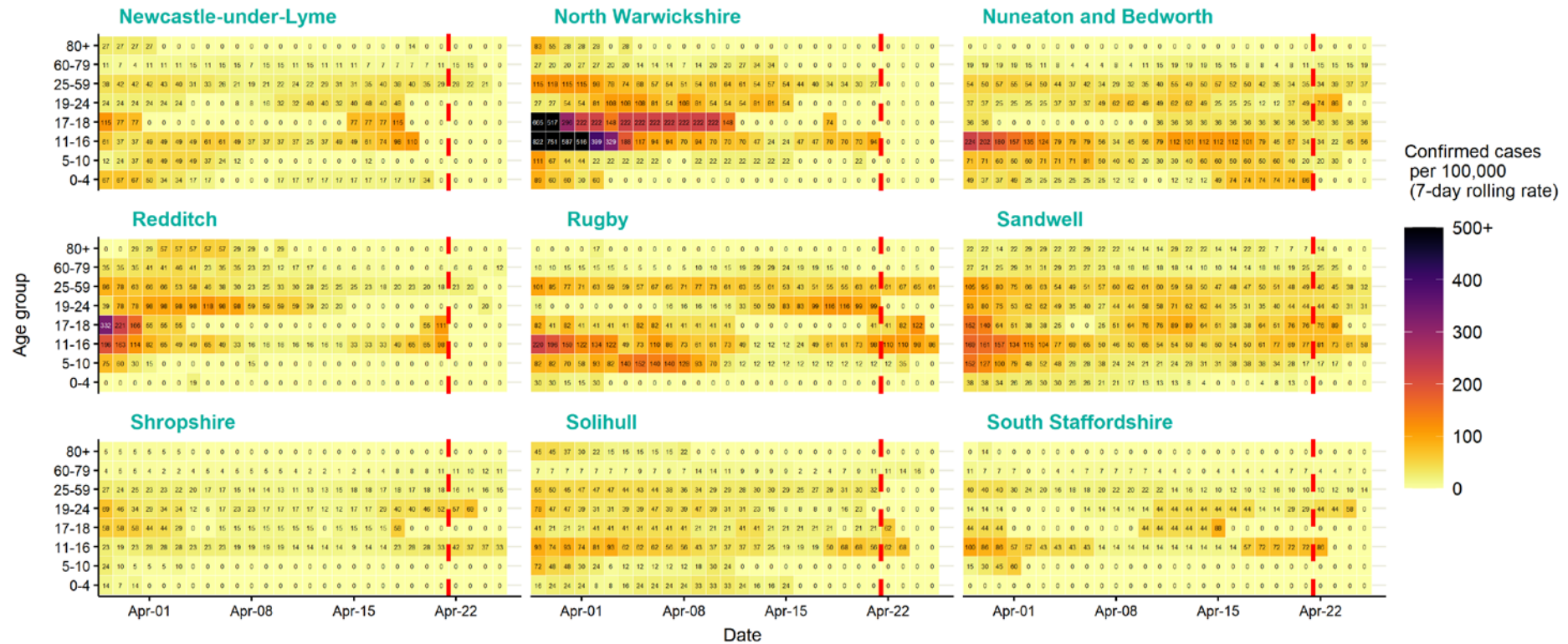
Source: Case data from SGSS. Produced by Outbreak Surveillance Team, PHE

The red dashed line on the heatmaps show the last four days where data may be incomplete due to reporting delays and removal of LFDs with accompanying negative PCR results.

Please consider this data provisional.

West Midlands age-stratified heatmap of weekly case rate by local authority, 29 Mar to 21 Apr 2021

WEST MIDLANDS LOCAL AUTHORITIES Age-specific confirmed case rate



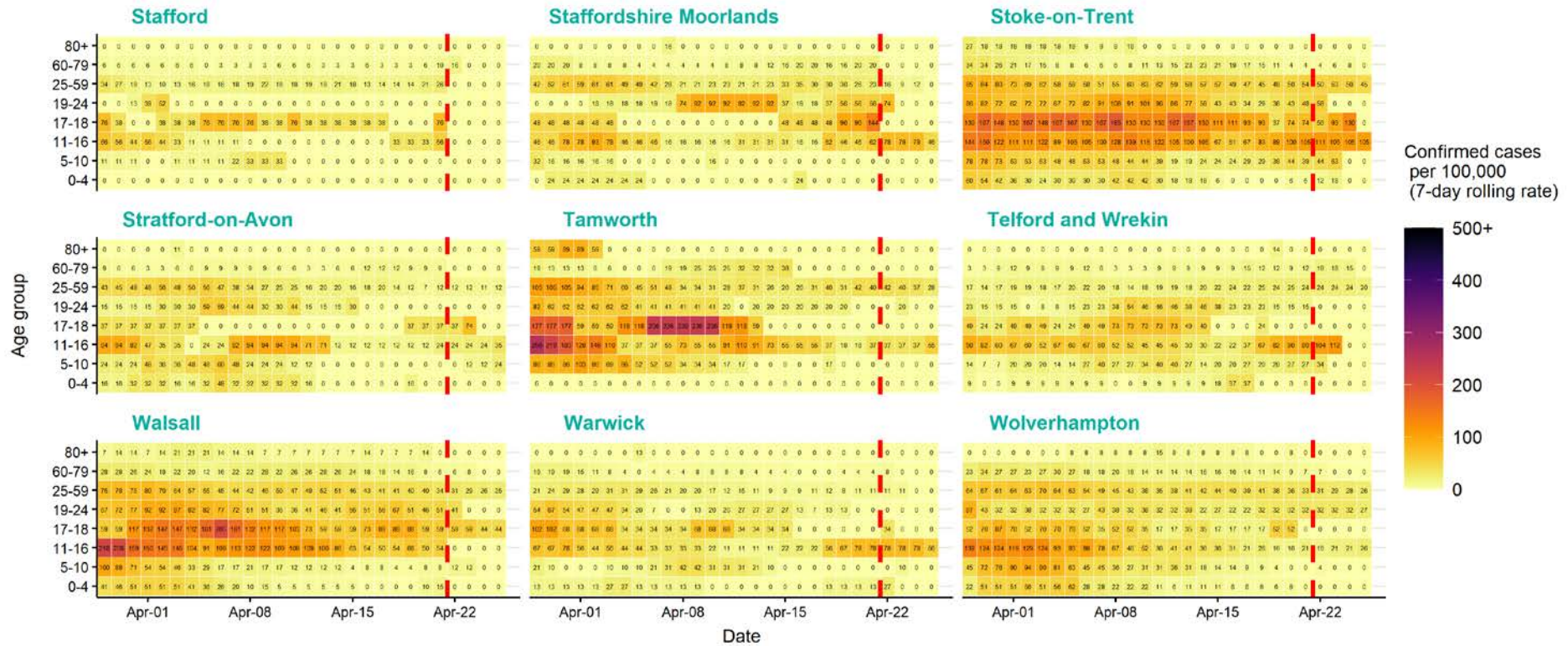
Source: Case data from SGSS. Produced by Outbreak Surveillance Team, PHE

The red dashed line on the heatmaps show the last four days where data may be incomplete due to reporting delays and removal of LFDs with accompanying negative PCR results.

Please consider this data provisional.

West Midlands age-stratified heatmap of weekly case rate by local authority, 29 Mar to 21 Apr 2021

WEST MIDLANDS LOCAL AUTHORITIES Age-specific confirmed case rate

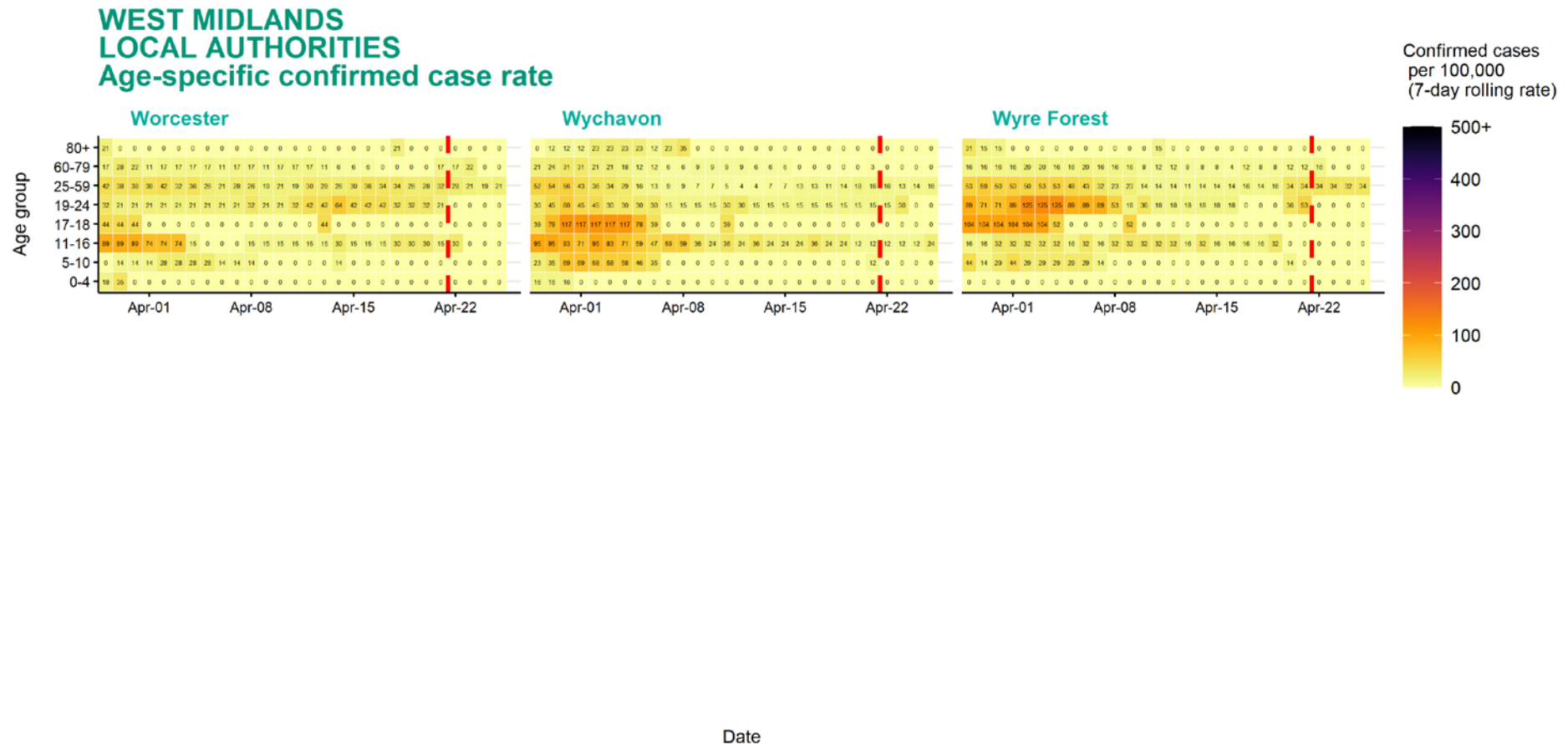


Source: Case data from SGSS. Produced by Outbreak Surveillance Team, PHE

The red dashed line on the heatmaps show the last four days where data may be incomplete due to reporting delays and removal of LFDs with accompanying negative PCR results.

Please consider this data provisional.

West Midlands age-stratified heatmap of weekly case rate by local authority, 29 Mar to 21 Apr 2021



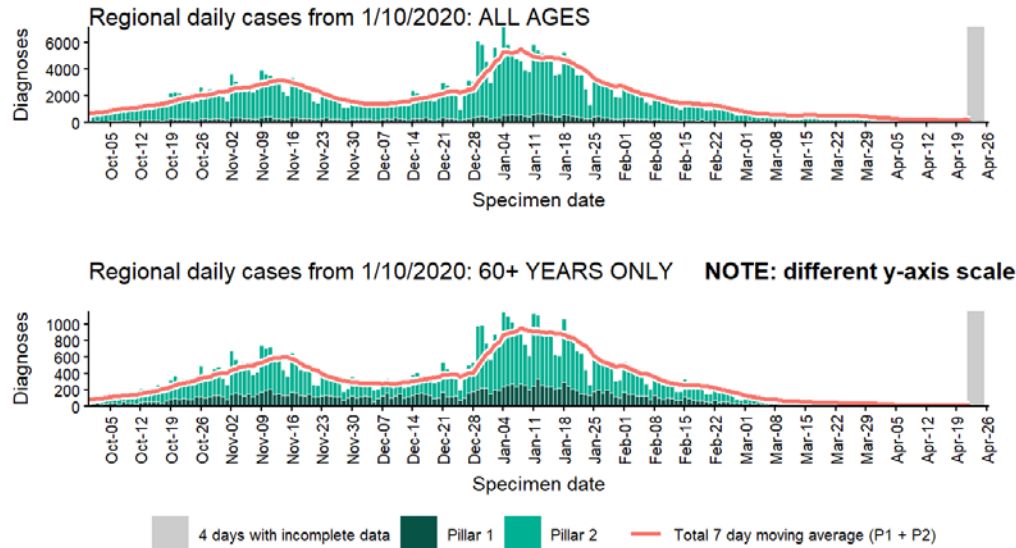
Source: Case data from SGSS. Produced by Outbreak Surveillance Team, PHE

The red dashed line on the heatmaps show the last four days where data may be incomplete due to reporting delays and removal of LFDs with accompanying negative PCR results.

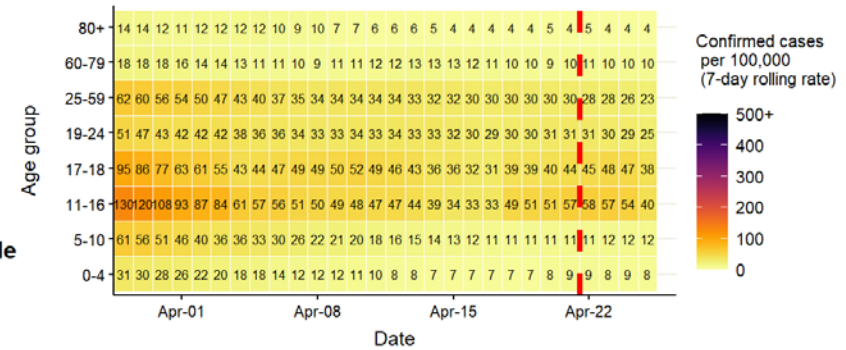
Please consider this data provisional.

West Midlands regional case numbers, testing numbers and positivity, 1 Oct to 25 Apr 2021

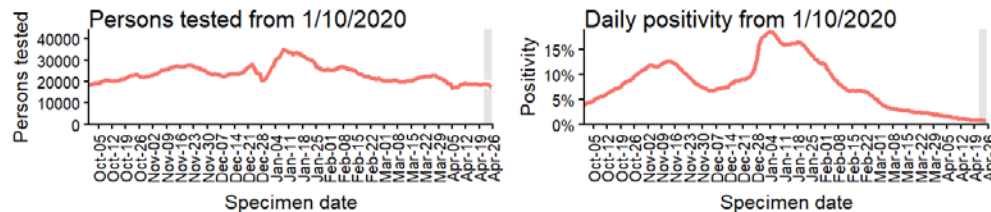
WEST MIDLANDS Cases and persons tested up to April 25 2021



Regional age-stratified case rate heatmap for West Midlands: 29 Mar to 25 Apr 2021,



The red dotted line denotes the last four days, subject to reporting delays



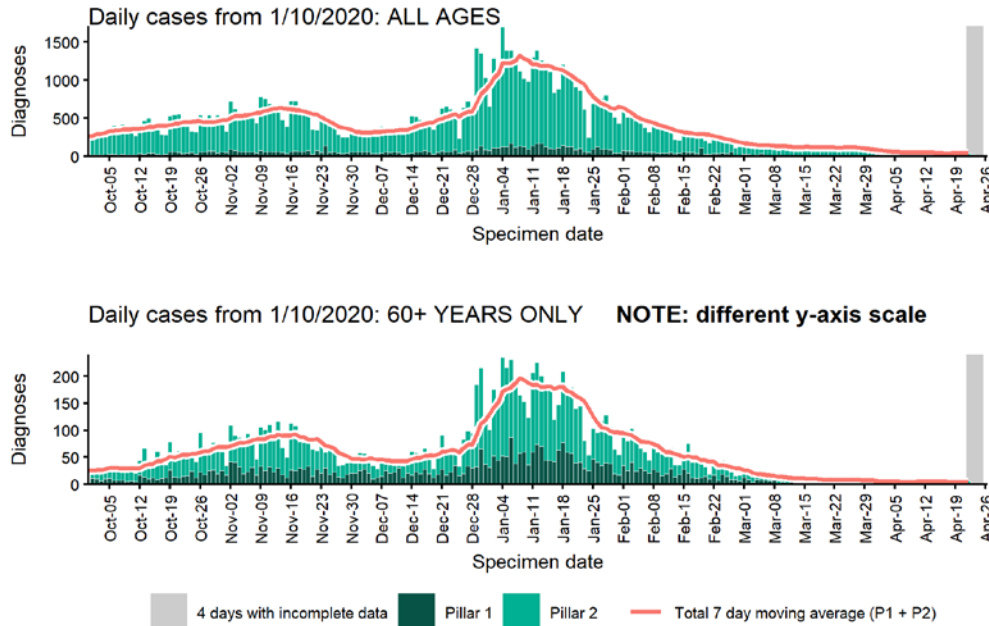
Data from SGSS. Produced by Outbreak Surveillance Team, PHE

The red dashed line on the heatmaps show the last four days where data may be incomplete due to reporting delays and removal of LFDs with accompanying negative PCR results.

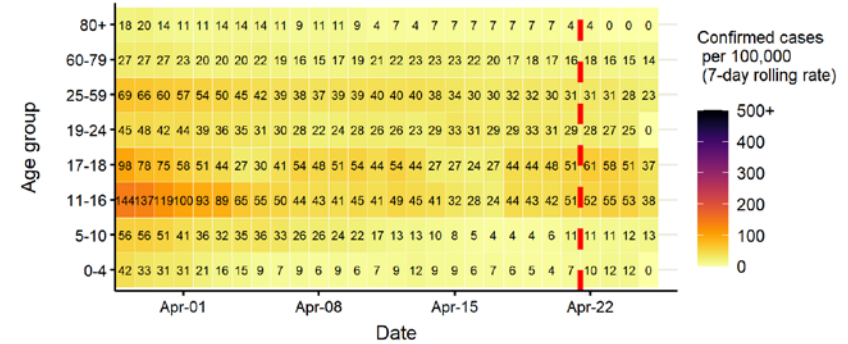
Please consider this data provisional.

Birmingham case numbers, testing numbers and positivity, 1 Oct to 25 Apr 2021

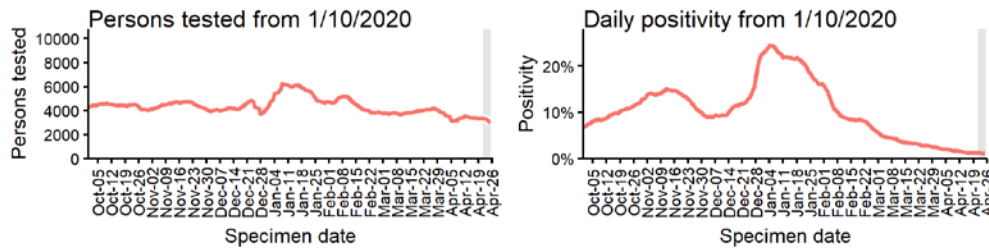
BIRMINGHAM Cases and persons tested up to April 25 2021



Age-stratified case rate heatmap for Birmingham: 29 Mar to 25 Apr 2021



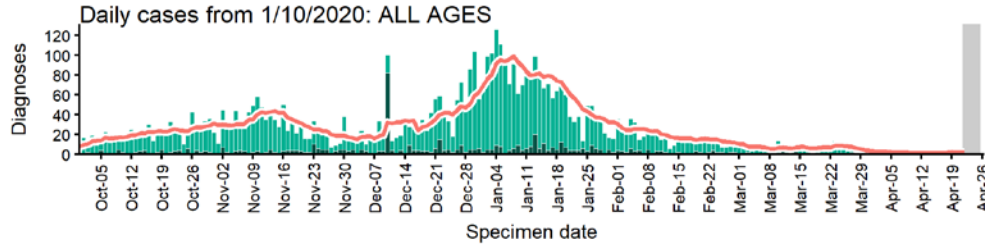
The red dashed line on the heatmaps show the last four days where data may be incomplete due to reporting delays and removal of LFDs with accompanying negative PCR results. Please consider this data provisional.



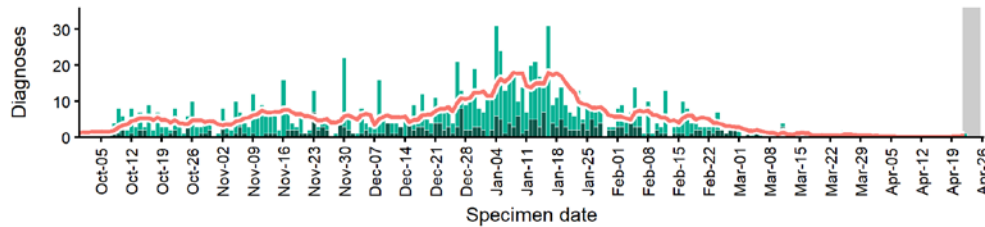
Data from SGSS. Produced by Outbreak Surveillance Team, PHE

Bromsgrove case numbers, testing numbers and positivity, 1 Oct to 25 Apr 2021

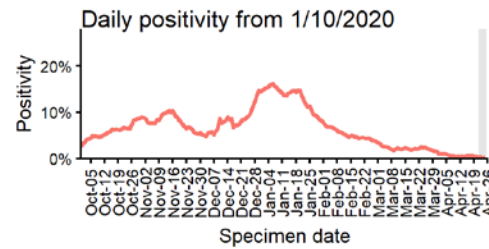
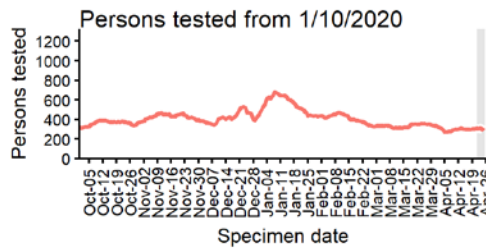
BROMSGROVE
Cases and persons tested up to April 25 2021



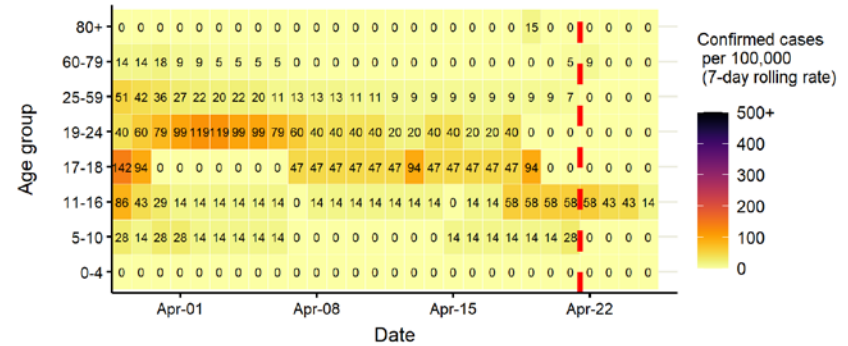
Daily cases from 1/10/2020: 60+ YEARS ONLY **NOTE: different y-axis scale**



4 days with incomplete data Pillar 1 Pillar 2 Total 7 day moving average (P1 + P2)



Age-stratified case rate heatmap for Bromsgrove: 29 Mar to 25 Apr 2021

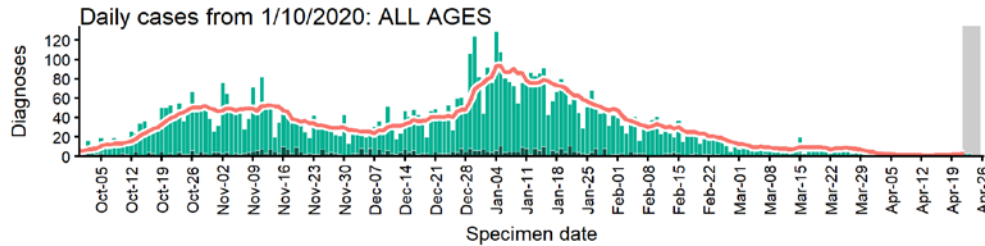


The red dashed line on the heatmaps show the last four days where data may be incomplete due to reporting delays and removal of LFDs with accompanying negative PCR results. Please consider this data provisional.

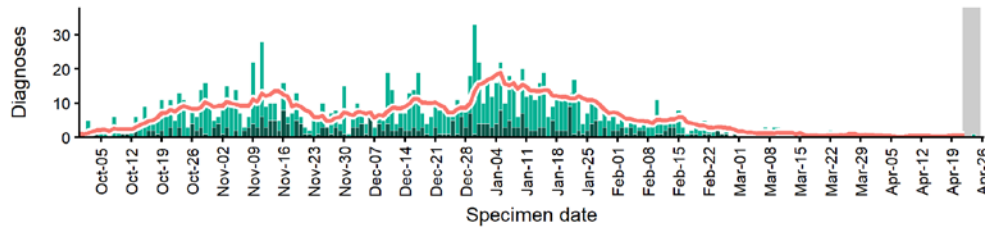
Data from SGSS. Produced by Outbreak Surveillance Team, PHE

Cannock Chase case numbers, testing numbers and positivity, 1 Oct to 25 Apr 2021

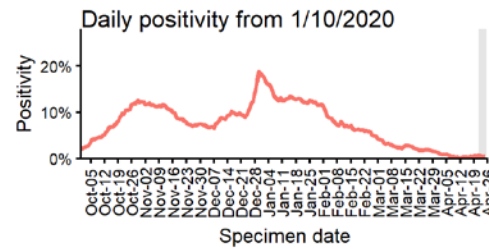
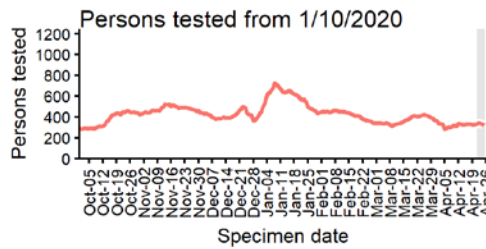
CANNOCK CHASE Cases and persons tested up to April 25 2021



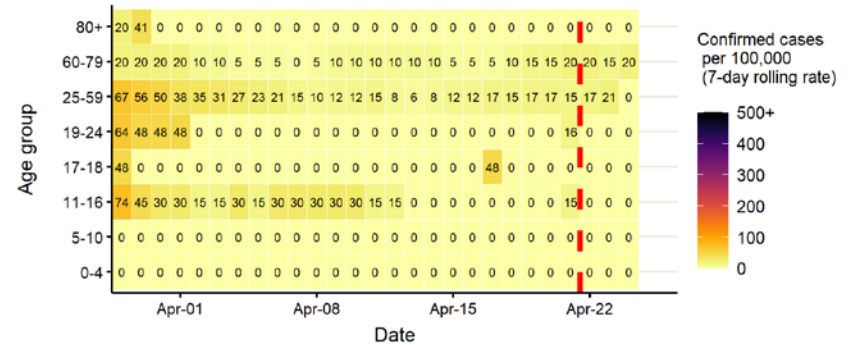
Daily cases from 1/10/2020: 60+ YEARS ONLY **NOTE: different y-axis scale**



4 days with incomplete data
 Pillar 1
 Pillar 2
 Total 7 day moving average (P1 + P2)



Age-stratified case rate heatmap for Cannock Chase: 29 Mar to 25 Apr 2021

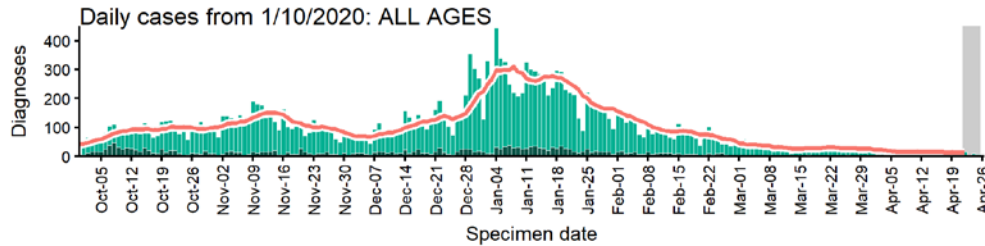


The red dashed line on the heatmaps show the last four days where data may be incomplete due to reporting delays and removal of LFDs with accompanying negative PCR results. Please consider this data provisional.

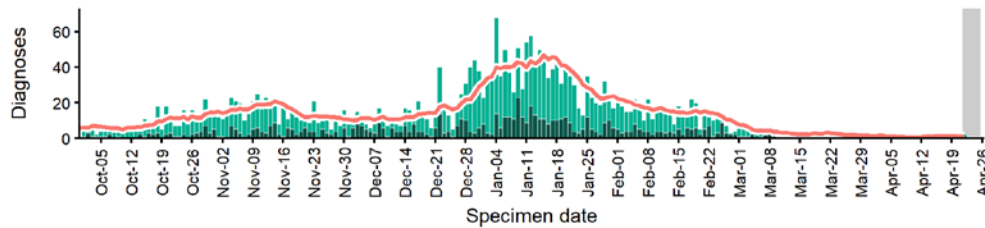
Data from SGSS. Produced by Outbreak Surveillance Team, PHE

Coventry case numbers, testing numbers and positivity, 1 Oct to 25 Apr 2021

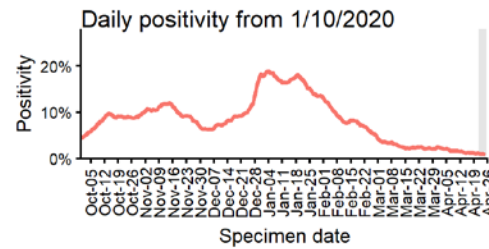
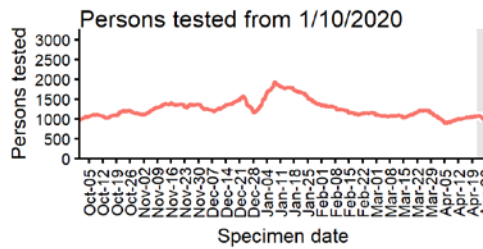
COVENTRY
Cases and persons tested up to April 25 2021



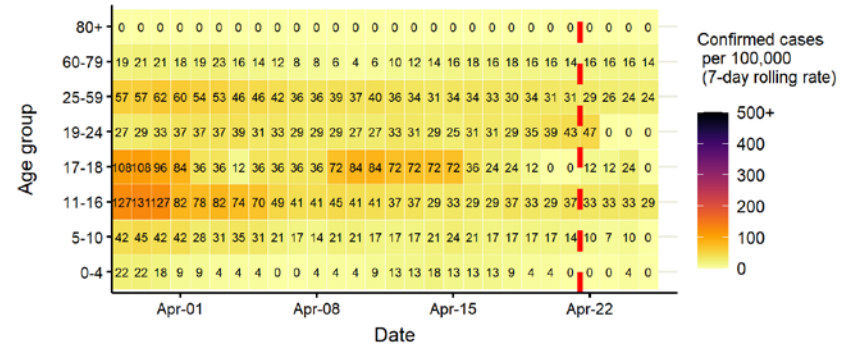
Daily cases from 1/10/2020: 60+ YEARS ONLY **NOTE: different y-axis scale**



4 days with incomplete data Pillar 1 Pillar 2 Total 7 day moving average (P1 + P2)



Age-stratified case rate heatmap for Coventry: 29 Mar to 25 Apr 2021

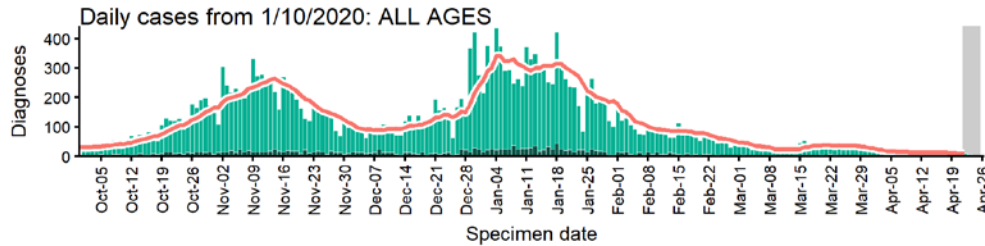


The red dashed line on the heatmaps show the last four days where data may be incomplete due to reporting delays and removal of LFDs with accompanying negative PCR results. Please consider this data provisional.

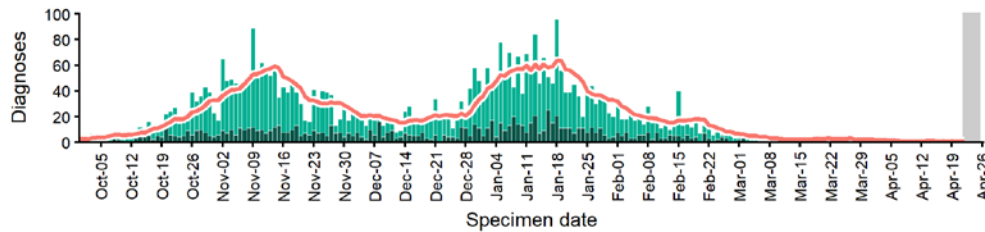
Data from SGSS. Produced by Outbreak Surveillance Team, PHE

Dudley case numbers, testing numbers and positivity, 1 Oct to 25 Apr 2021

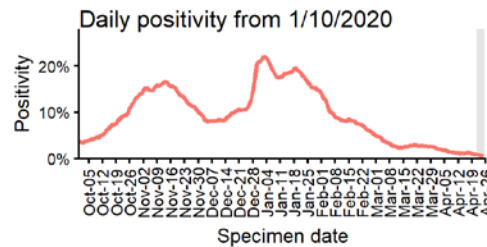
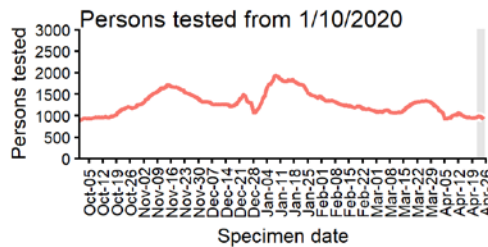
DUDLEY Cases and persons tested up to April 25 2021



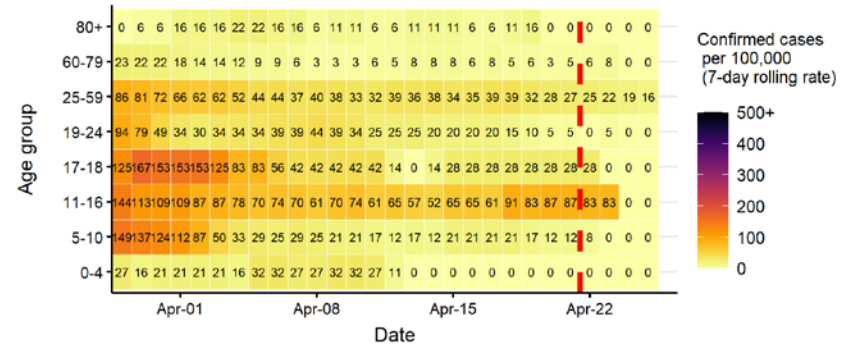
Daily cases from 1/10/2020: 60+ YEARS ONLY **NOTE: different y-axis scale**



4 days with incomplete data Pillar 1 Pillar 2 Total 7 day moving average (P1 + P2)



Age-stratified case rate heatmap for Dudley: 29 Mar to 25 Apr 2021

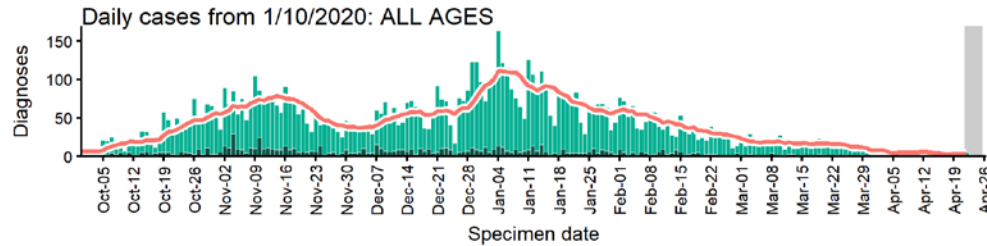


The red dashed line on the heatmaps show the last four days where data may be incomplete due to reporting delays and removal of LFDs with accompanying negative PCR results. Please consider this data provisional.

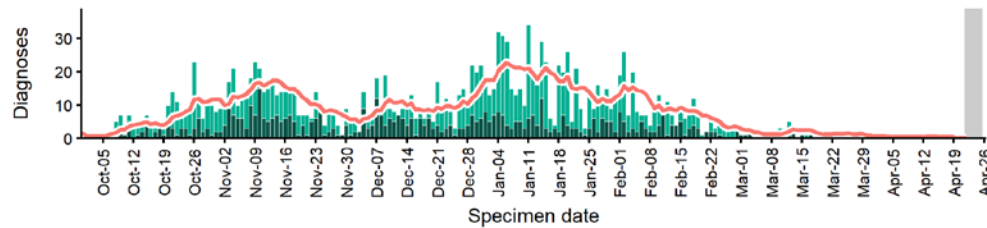
Data from SGSS. Produced by Outbreak Surveillance Team, PHE

East Staffordshire case numbers, testing numbers and positivity, 1 Oct to 25 Apr 2021

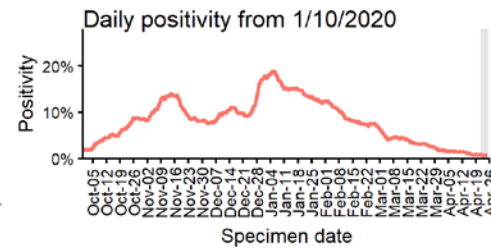
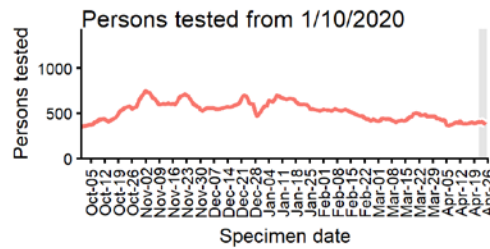
EAST STAFFORDSHIRE Cases and persons tested up to April 25 2021



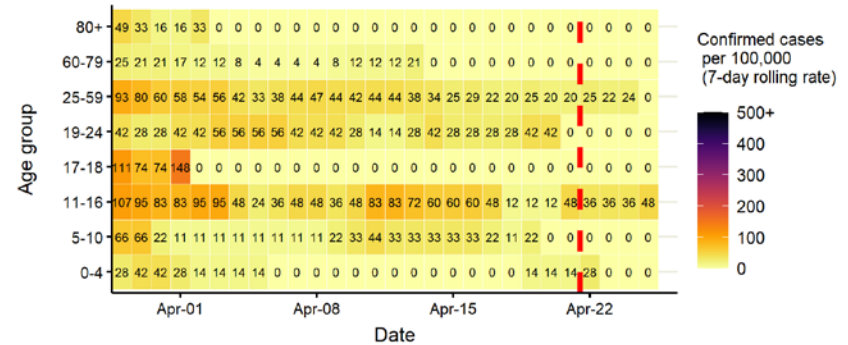
Daily cases from 1/10/2020: 60+ YEARS ONLY **NOTE: different y-axis scale**



4 days with incomplete data
 Pillar 1
 Pillar 2
 Total 7 day moving average (P1 + P2)



Age-stratified case rate heatmap for East Staffordshire: 29 Mar to 25 Apr 2021

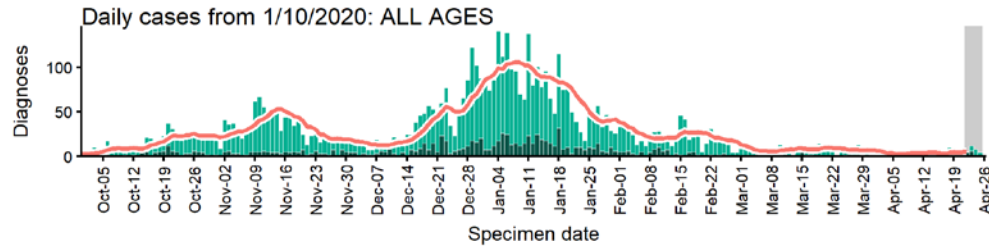


The red dashed line on the heatmaps show the last four days where data may be incomplete due to reporting delays and removal of LFDs with accompanying negative PCR results. Please consider this data provisional.

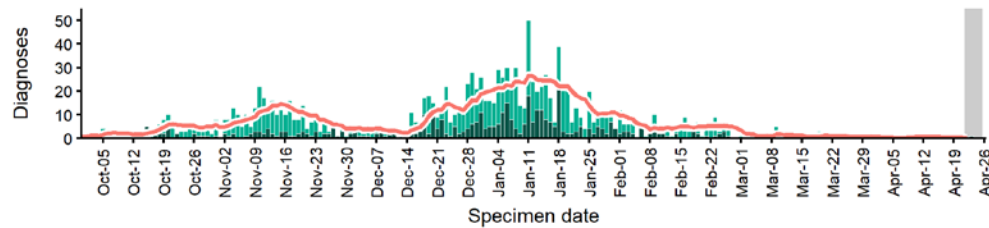
Data from SGSS. Produced by Outbreak Surveillance Team, PHE

Herefordshire, County of case numbers, testing numbers and positivity, 1 Oct to 25 Apr 2021

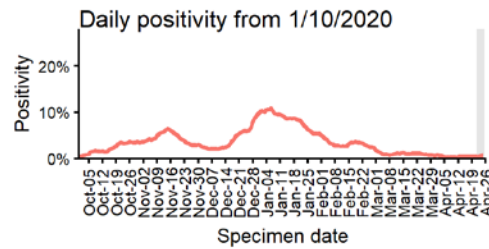
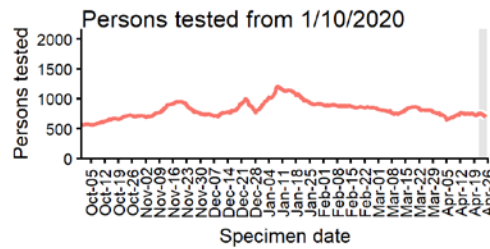
HEREFORDSHIRE, COUNTY OF
Cases and persons tested up to April 25 2021



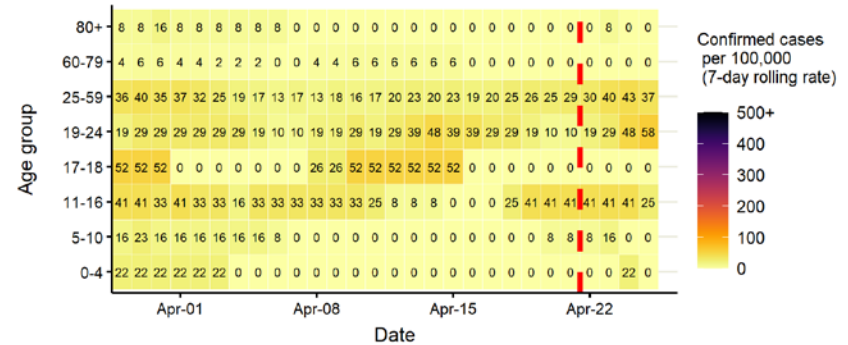
Daily cases from 1/10/2020: 60+ YEARS ONLY NOTE: different y-axis scale



4 days with incomplete data
 Pillar 1
 Pillar 2
 Total 7 day moving average (P1 + P2)



Age-stratified case rate heatmap for Herefordshire, County of: 29
Mar to 25 Apr 2021

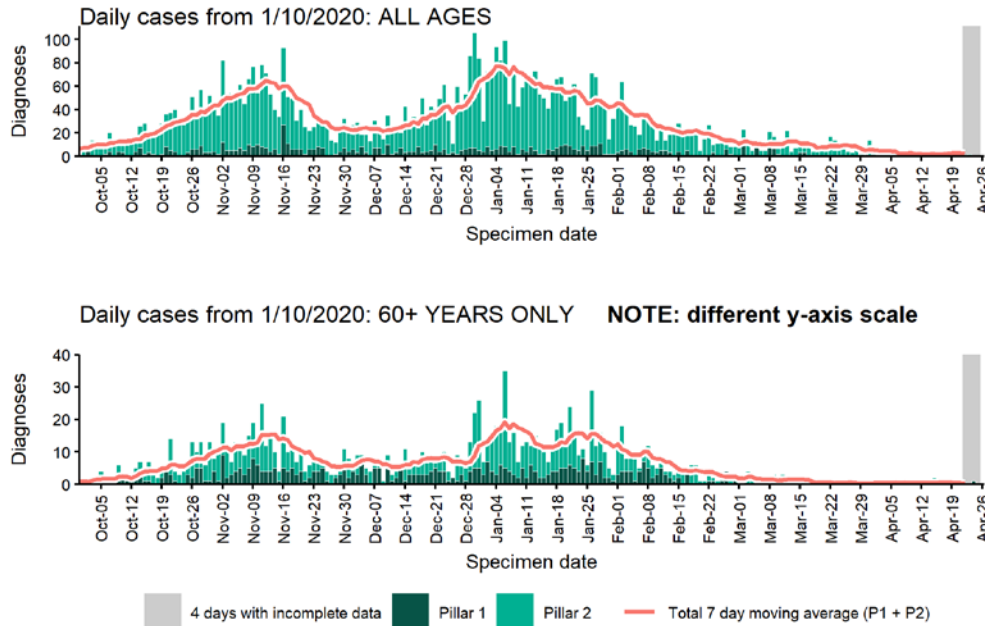


The red dashed line on the heatmaps show the last four days where data may be incomplete due to reporting delays and removal of LFDs with accompanying negative PCR results. Please consider this data provisional.

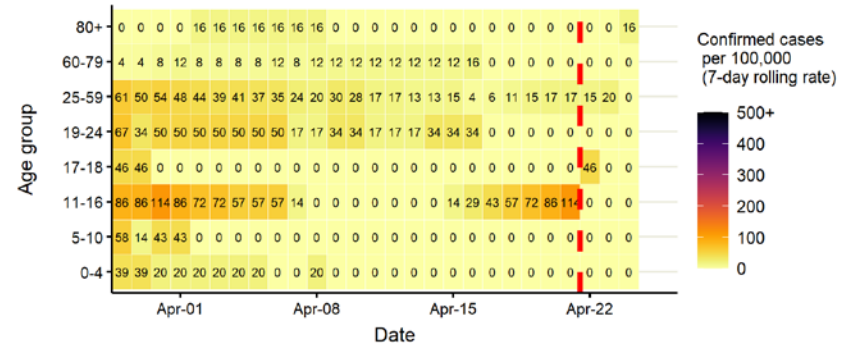
Data from SGSS. Produced by Outbreak Surveillance Team, PHE

Lichfield case numbers, testing numbers and positivity, 1 Oct to 25 Apr 2021

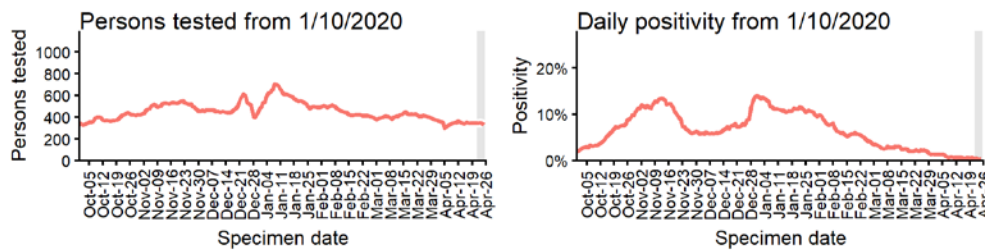
LICHFIELD
Cases and persons tested up to April 25 2021



Age-stratified case rate heatmap for Lichfield: 29 Mar to 25 Apr 2021



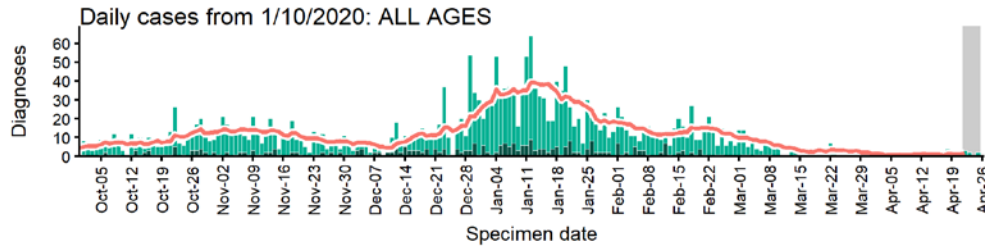
The red dashed line on the heatmaps show the last four days where data may be incomplete due to reporting delays and removal of LFDs with accompanying negative PCR results. Please consider this data provisional.



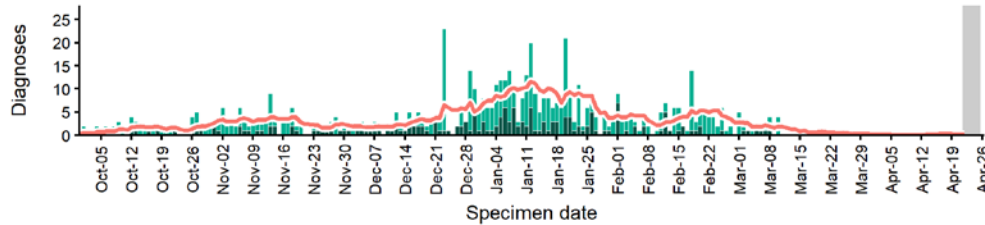
Data from SGSS. Produced by Outbreak Surveillance Team, PHE

Malvern Hills case numbers, testing numbers and positivity, 1 Oct to 25 Apr 2021

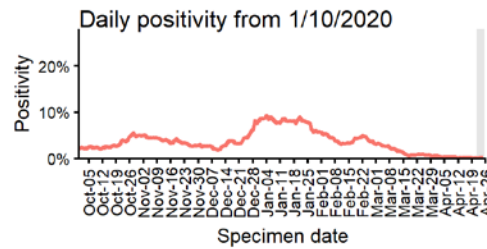
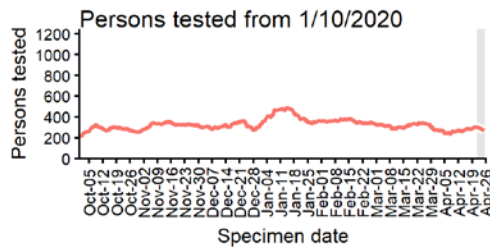
MALVERN HILLS Cases and persons tested up to April 25 2021



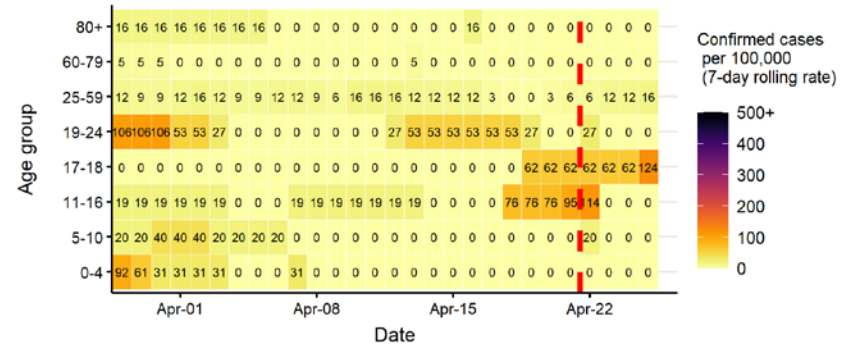
Daily cases from 1/10/2020: 60+ YEARS ONLY **NOTE: different y-axis scale**



4 days with incomplete data
 Pillar 1
 Pillar 2
 Total 7 day moving average (P1 + P2)



Age-stratified case rate heatmap for Malvern Hills: 29 Mar to 25 Apr 2021

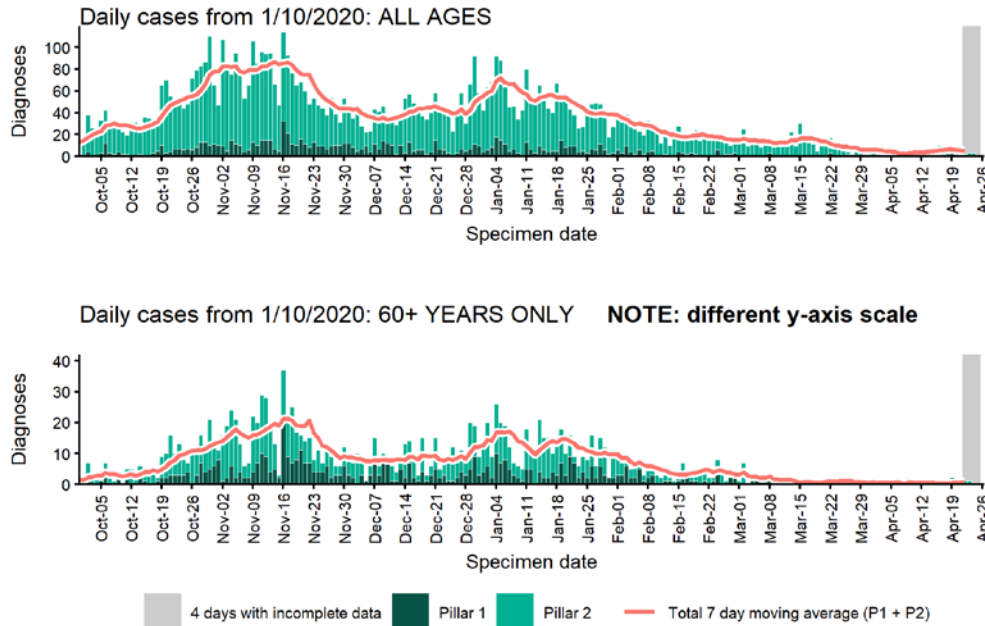


The red dashed line on the heatmaps show the last four days where data may be incomplete due to reporting delays and removal of LFDs with accompanying negative PCR results. Please consider this data provisional.

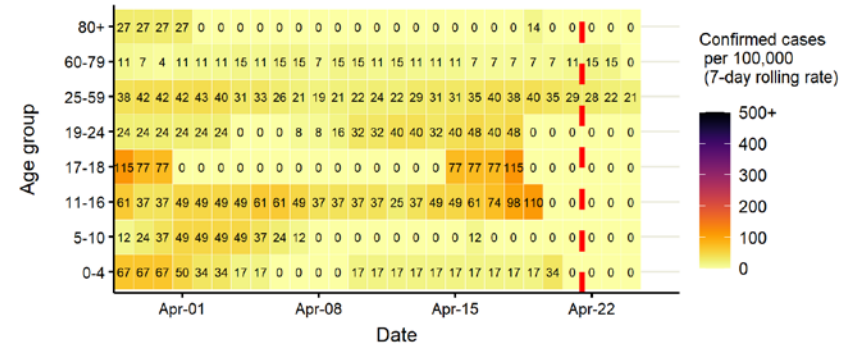
Data from SGSS. Produced by Outbreak Surveillance Team, PHE

Newcastle-under-Lyme case numbers, testing numbers and positivity, 1 Oct to 25 Apr 2021

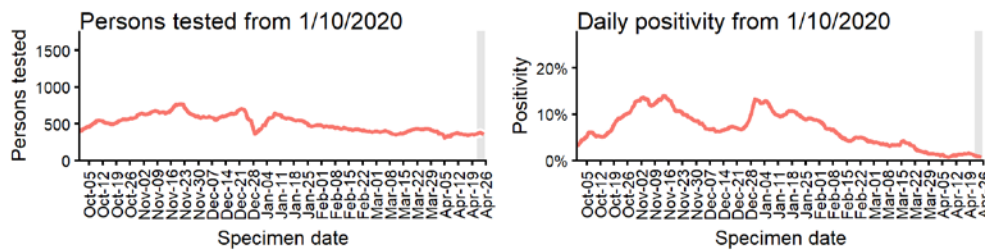
NEWCASTLE-UNDER-LYME
Cases and persons tested up to April 25 2021



Age-stratified case rate heatmap for Newcastle-under-Lyme: 29 Mar to 25 Apr 2021



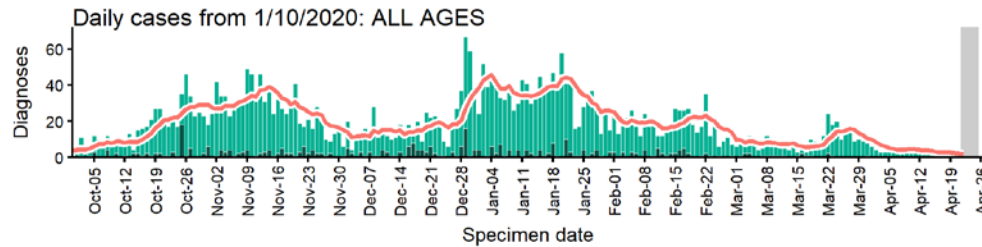
The red dashed line on the heatmaps show the last four days where data may be incomplete due to reporting delays and removal of LFDs with accompanying negative PCR results. Please consider this data provisional.



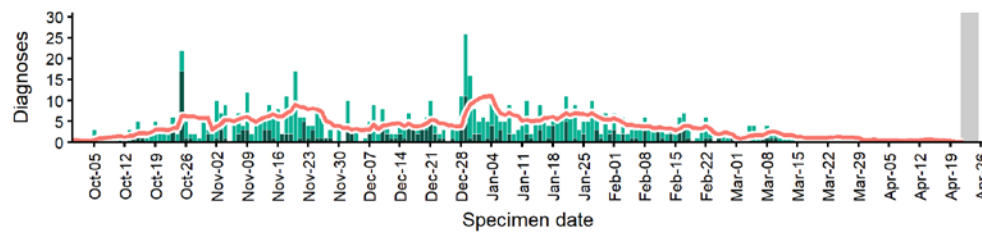
Data from SGSS. Produced by Outbreak Surveillance Team, PHE

North Warwickshire case numbers, testing numbers and positivity, 1 Oct to 25 Apr 2021

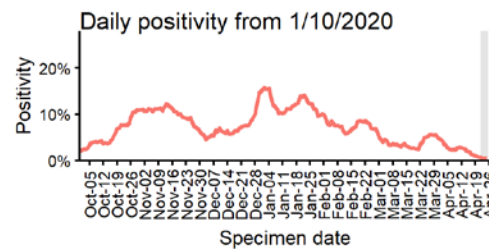
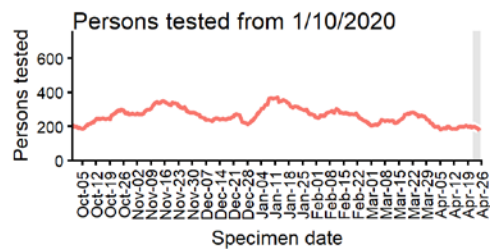
**NORTH WARWICKSHIRE
Cases and persons tested up to April 25 2021**



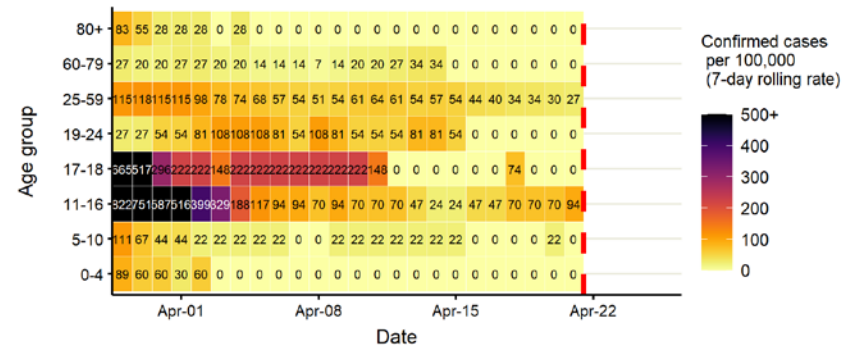
Daily cases from 1/10/2020: 60+ YEARS ONLY **NOTE: different y-axis scale**



4 days with incomplete data Pillar 1 Pillar 2 Total 7 day moving average (P1 + P2)



Age-stratified case rate heatmap for North Warwickshire: 29 Mar to 25 Apr 2021

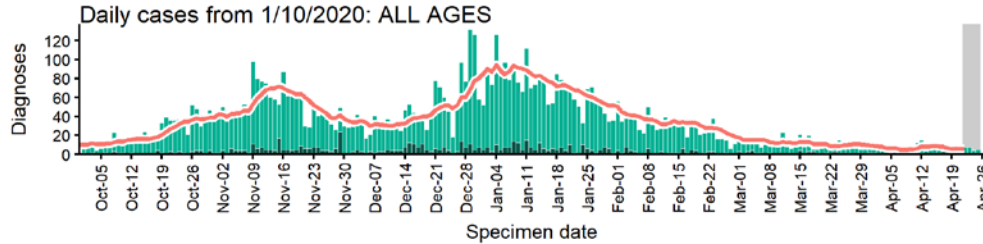


The red dashed line on the heatmaps show the last four days where data may be incomplete due to reporting delays and removal of LFDs with accompanying negative PCR results. Please consider this data provisional.

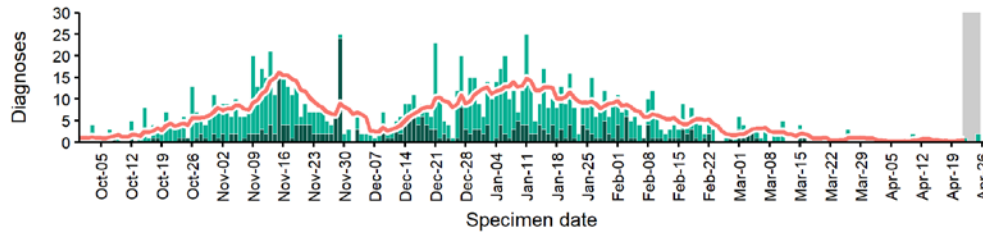
Data from SGSS. Produced by Outbreak Surveillance Team, PHE

Nuneaton and Bedworth case numbers, testing numbers and positivity, 1 Oct to 25 Apr 2021

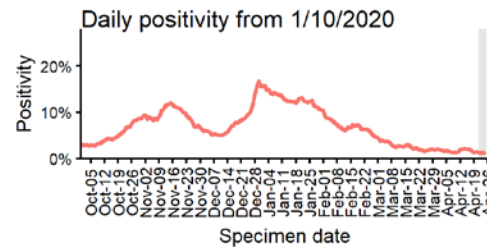
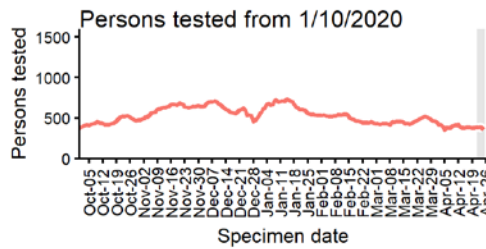
NUNEATON AND BEDWORTH
Cases and persons tested up to April 25 2021



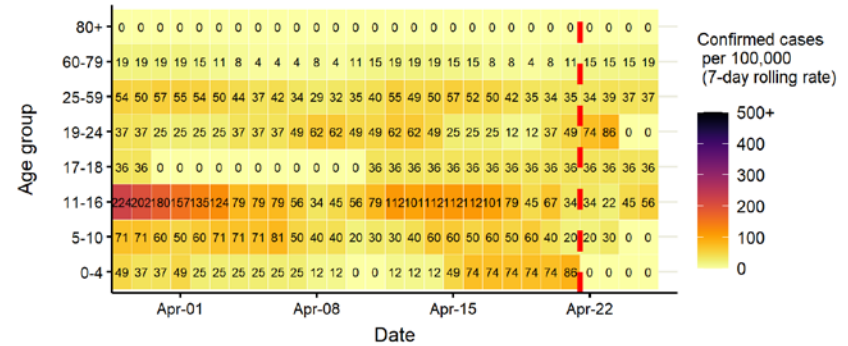
Daily cases from 1/10/2020: 60+ YEARS ONLY **NOTE: different y-axis scale**



4 days with incomplete data
 Pillar 1
 Pillar 2
 Total 7 day moving average (P1 + P2)



Age-stratified case rate heatmap for Nuneaton and Bedworth: 29
Mar to 25 Apr 2021

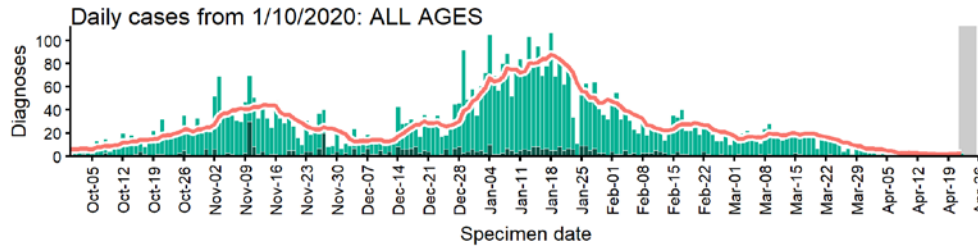


The red dashed line on the heatmaps show the last four days where data may be incomplete due to reporting delays and removal of LFDs with accompanying negative PCR results. Please consider this data provisional.

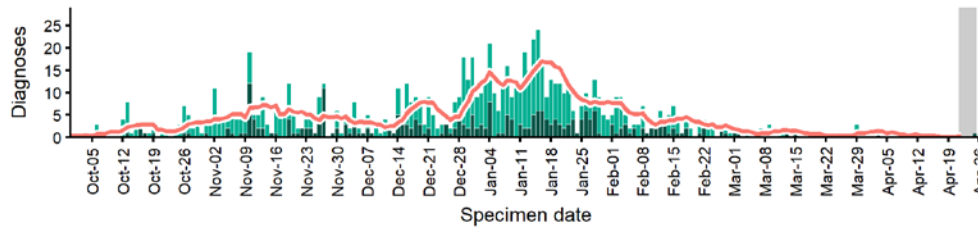
Data from SGSS. Produced by Outbreak Surveillance Team, PHE

Redditch case numbers, testing numbers and positivity, 1 Oct to 25 Apr 2021

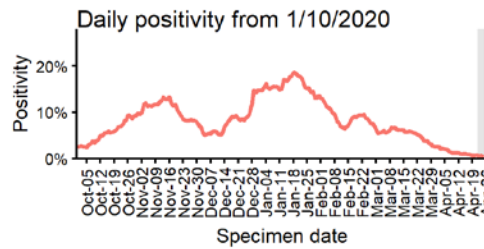
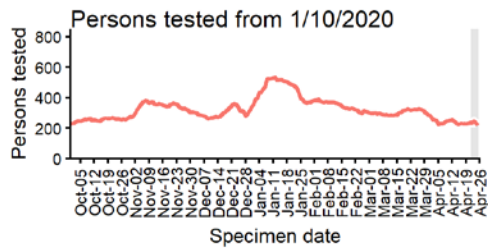
REDDITCH Cases and persons tested up to April 25 2021



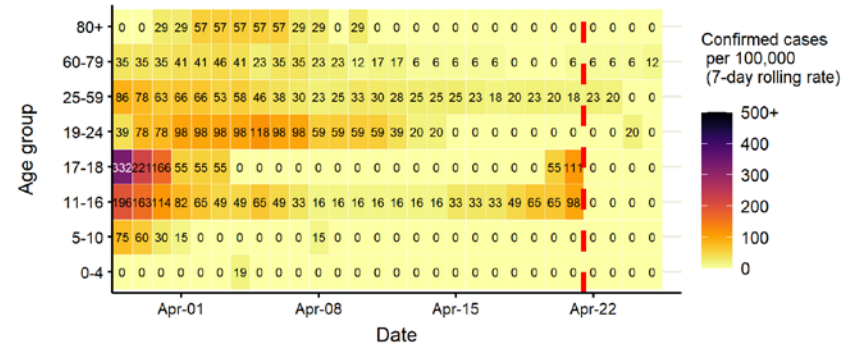
Daily cases from 1/10/2020: 60+ YEARS ONLY NOTE: different y-axis scale



4 days with incomplete data Pillar 1 Pillar 2 Total 7 day moving average (P1 + P2)



Age-stratified case rate heatmap for Redditch: 29 Mar to 25 Apr 2021

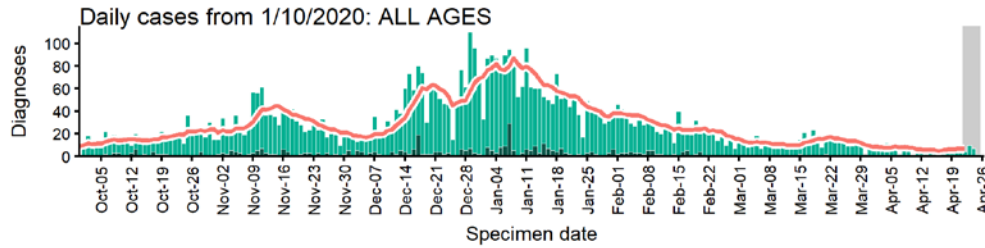


The red dashed line on the heatmaps show the last four days where data may be incomplete due to reporting delays and removal of LFDs with accompanying negative PCR results. Please consider this data provisional.

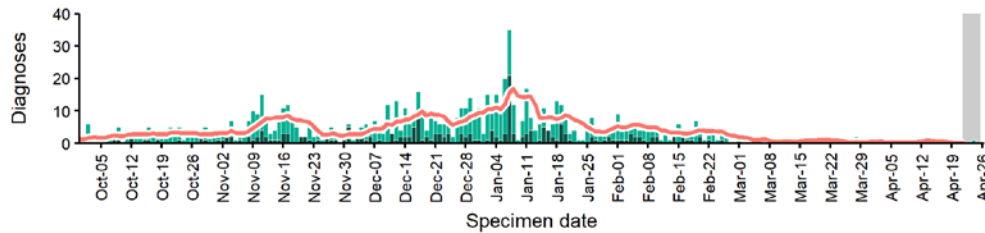
Data from SGSS. Produced by Outbreak Surveillance Team, PHE

Rugby case numbers, testing numbers and positivity, 1 Oct to 25 Apr 2021

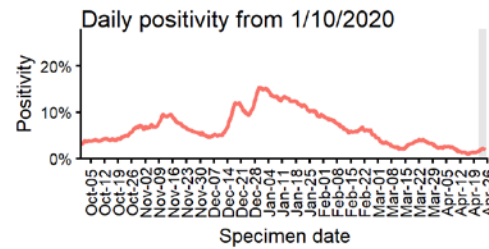
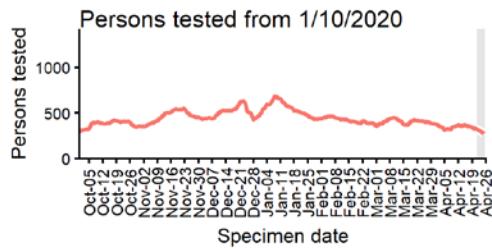
RUGBY Cases and persons tested up to April 25 2021



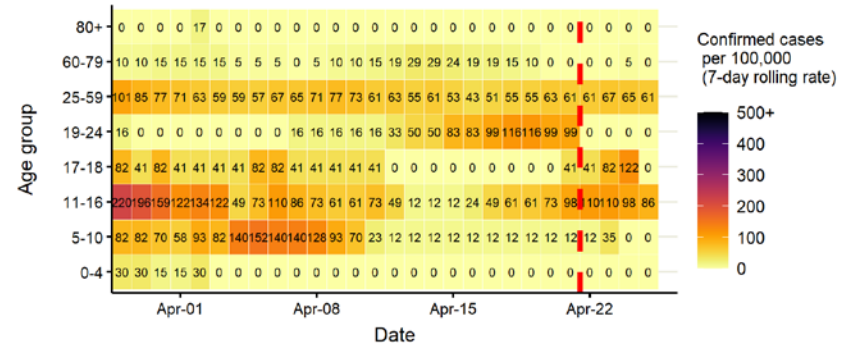
Daily cases from 1/10/2020: 60+ YEARS ONLY **NOTE: different y-axis scale**



4 days with incomplete data
 Pillar 1
 Pillar 2
 Total 7 day moving average (P1 + P2)



Age-stratified case rate heatmap for Rugby: 29 Mar to 25 Apr 2021

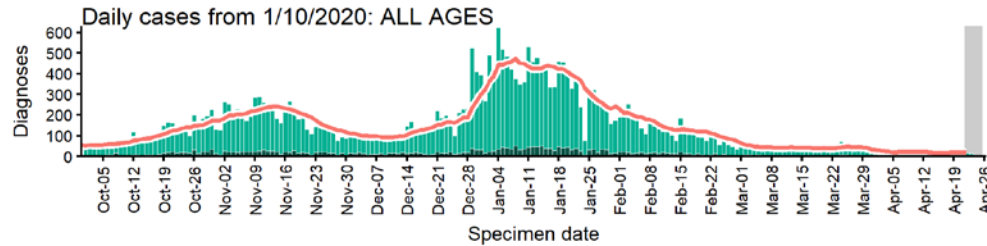


The red dashed line on the heatmaps show the last four days where data may be incomplete due to reporting delays and removal of LFDs with accompanying negative PCR results. Please consider this data provisional.

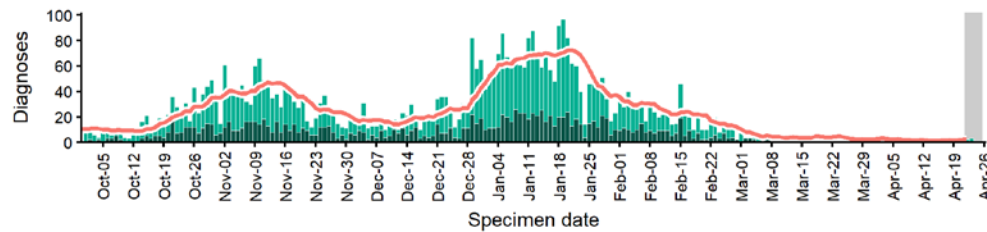
Data from SGSS. Produced by Outbreak Surveillance Team, PHE

Sandwell case numbers, testing numbers and positivity, 1 Oct to 25 Apr 2021

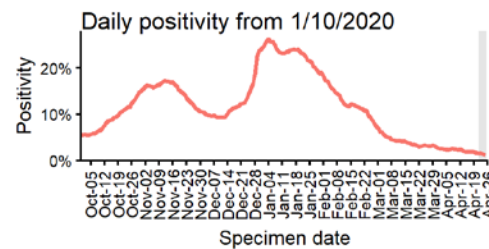
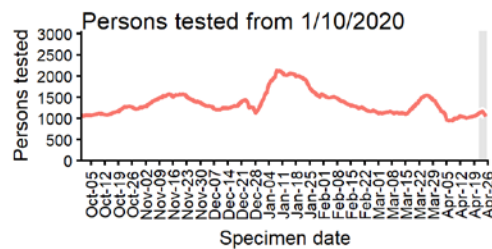
SANDWELL Cases and persons tested up to April 25 2021



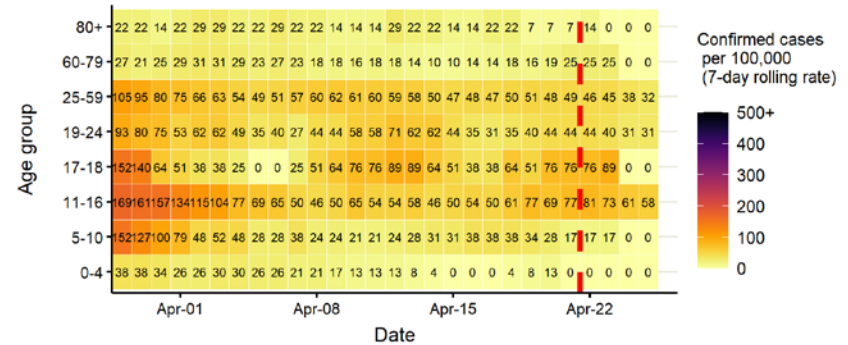
Daily cases from 1/10/2020: 60+ YEARS ONLY **NOTE: different y-axis scale**



4 days with incomplete data Pillar 1 Pillar 2 Total 7 day moving average (P1 + P2)



Age-stratified case rate heatmap for Sandwell: 29 Mar to 25 Apr 2021

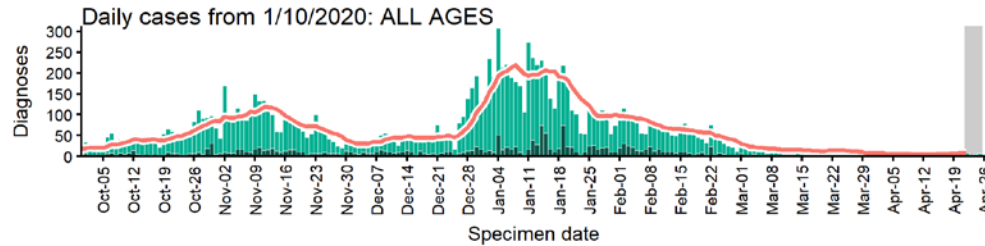


The red dashed line on the heatmaps show the last four days where data may be incomplete due to reporting delays and removal of LFDs with accompanying negative PCR results.

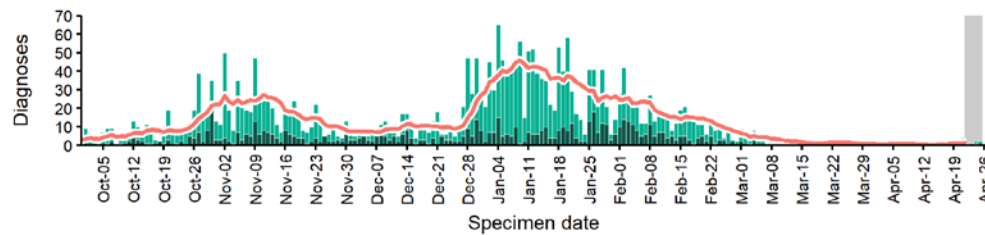
Please consider this data provisional.

Shropshire case numbers, testing numbers and positivity, 1 Oct to 25 Apr 2021

SHROPSHIRE
Cases and persons tested up to April 25 2021

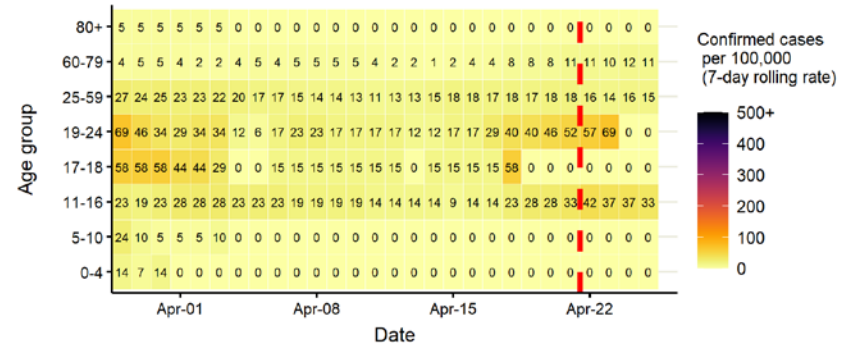


Daily cases from 1/10/2020: 60+ YEARS ONLY **NOTE: different y-axis scale**

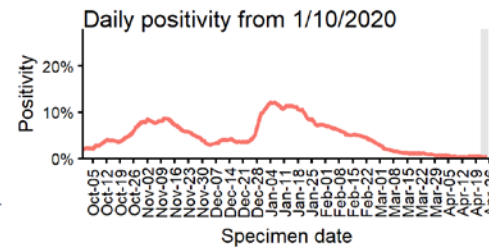
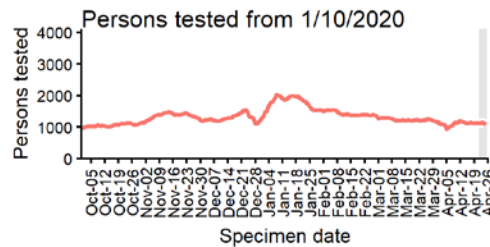


4 days with incomplete data Pillar 1 Pillar 2 Total 7 day moving average (P1 + P2)

Age-stratified case rate heatmap for Shropshire: 29 Mar to 25 Apr 2021



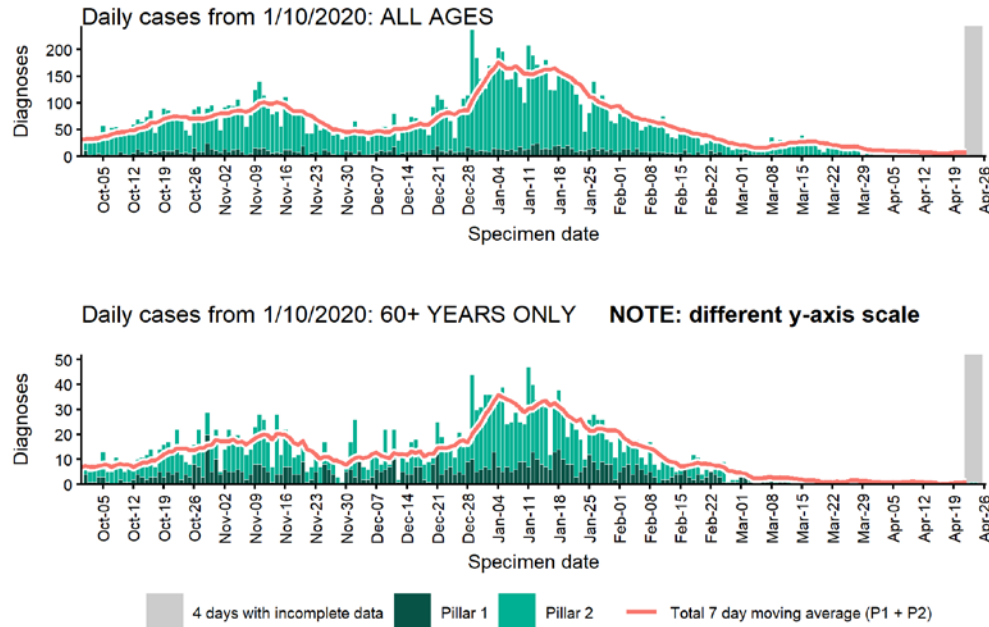
The red dashed line on the heatmaps show the last four days where data may be incomplete due to reporting delays and removal of LFDs with accompanying negative PCR results. Please consider this data provisional.



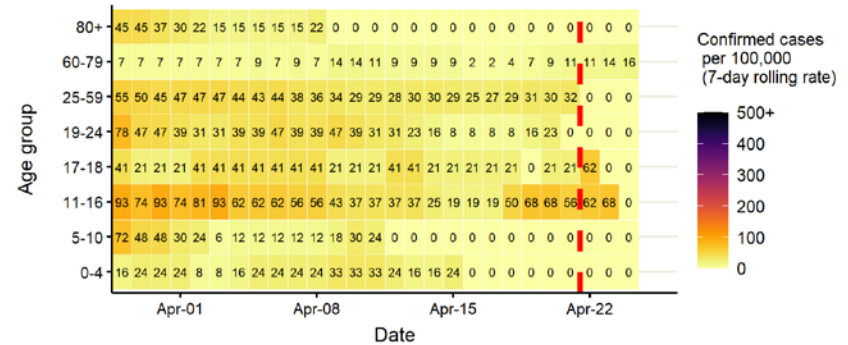
Data from SGSS. Produced by Outbreak Surveillance Team, PHE

Solihull case numbers, testing numbers and positivity, 1 Oct to 25 Apr 2021

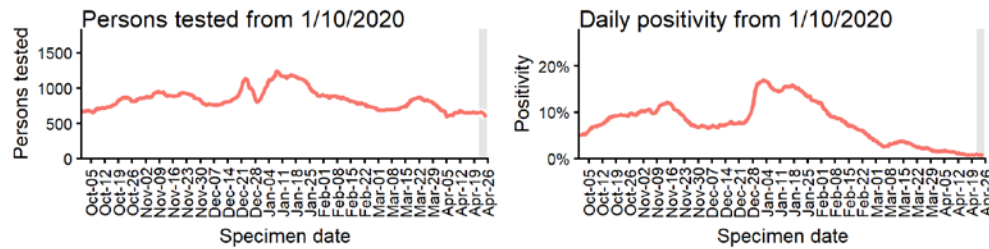
SOLIHULL Cases and persons tested up to April 25 2021



Age-stratified case rate heatmap for Solihull: 29 Mar to 25 Apr 2021



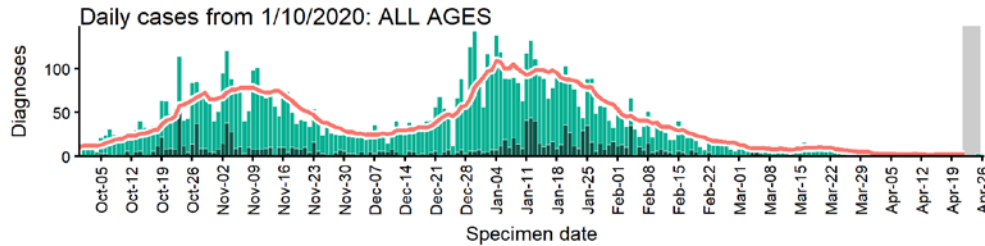
The red dashed line on the heatmaps show the last four days where data may be incomplete due to reporting delays and removal of LFDs with accompanying negative PCR results. Please consider this data provisional.



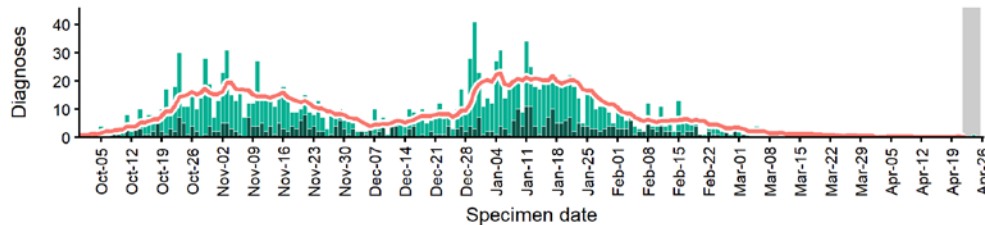
Data from SGSS. Produced by Outbreak Surveillance Team, PHE

South Staffordshire case numbers, testing numbers and positivity, 1 Oct to 25 Apr 2021

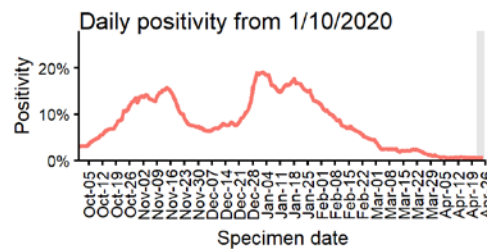
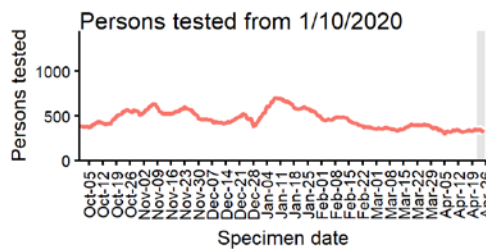
SOUTH STAFFORDSHIRE
Cases and persons tested up to April 25 2021



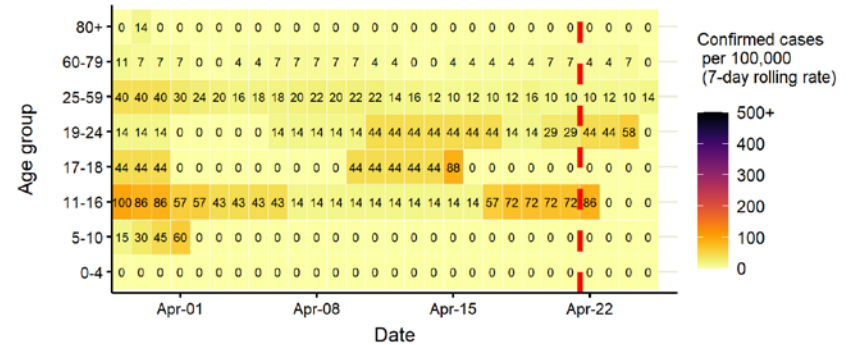
Daily cases from 1/10/2020: 60+ YEARS ONLY **NOTE: different y-axis scale**



4 days with incomplete data Pillar 1 Pillar 2 Total 7 day moving average (P1 + P2)



Age-stratified case rate heatmap for South Staffordshire: 29 Mar to 25 Apr 2021

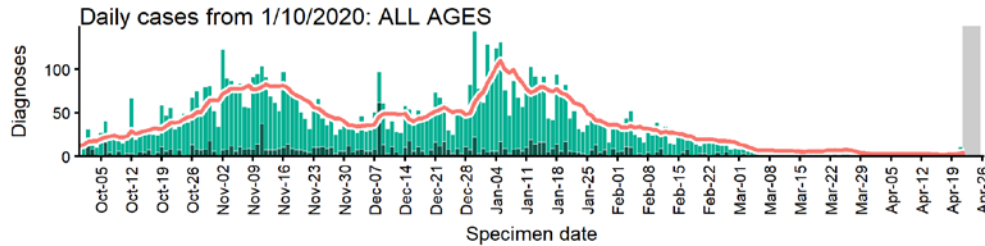


The red dashed line on the heatmaps show the last four days where data may be incomplete due to reporting delays and removal of LFDs with accompanying negative PCR results. Please consider this data provisional.

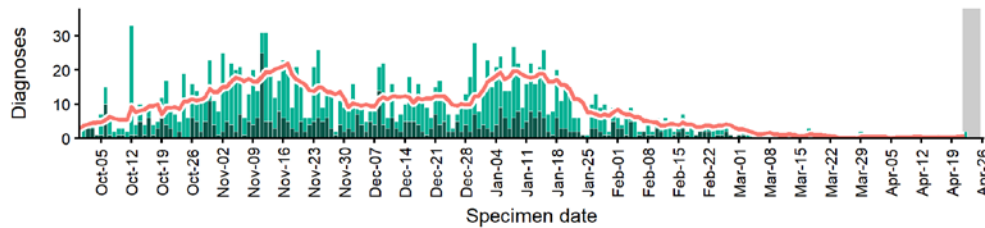
Data from SGSS. Produced by Outbreak Surveillance Team, PHE

Stafford case numbers, testing numbers and positivity, 1 Oct to 25 Apr 2021

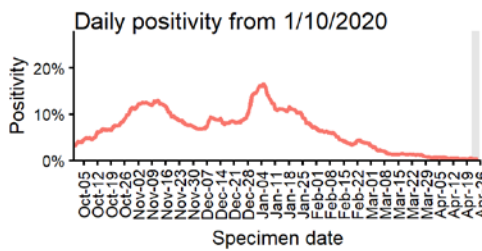
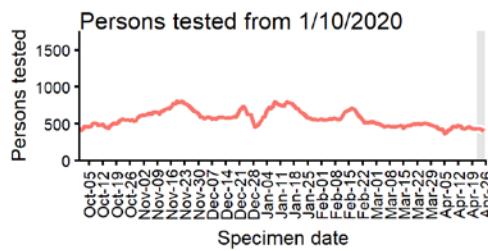
STAFFORD
Cases and persons tested up to April 25 2021



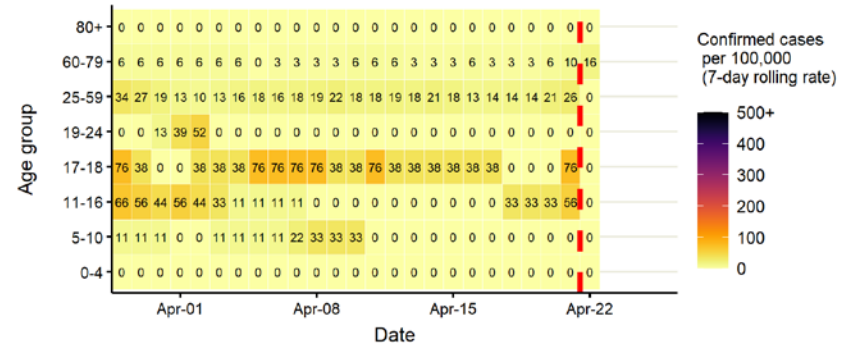
Daily cases from 1/10/2020: 60+ YEARS ONLY **NOTE: different y-axis scale**



4 days with incomplete data Pillar 1 Pillar 2 Total 7 day moving average (P1 + P2)



Age-stratified case rate heatmap for Stafford: 29 Mar to 25 Apr 2021

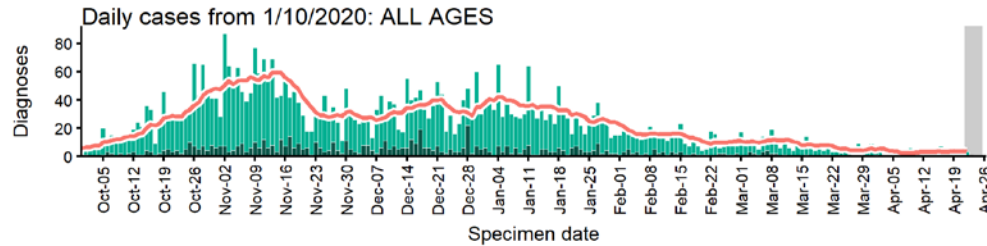


The red dashed line on the heatmaps show the last four days where data may be incomplete due to reporting delays and removal of LFDs with accompanying negative PCR results. Please consider this data provisional.

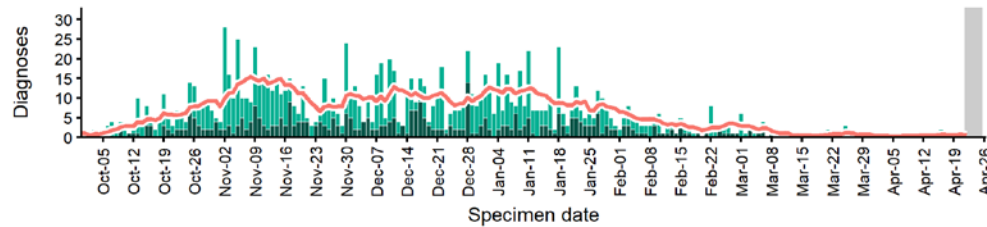
Data from SGSS. Produced by Outbreak Surveillance Team, PHE

Staffordshire Moorlands case numbers, testing numbers and positivity, 1 Oct to 25 Apr 2021

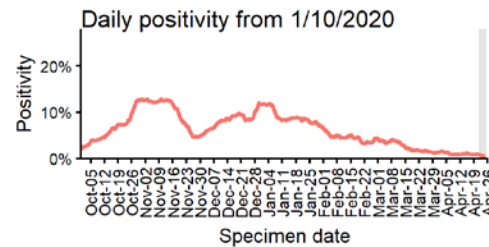
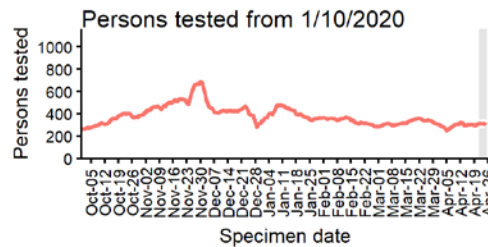
STAFFORDSHIRE MOORLANDS Cases and persons tested up to April 25 2021



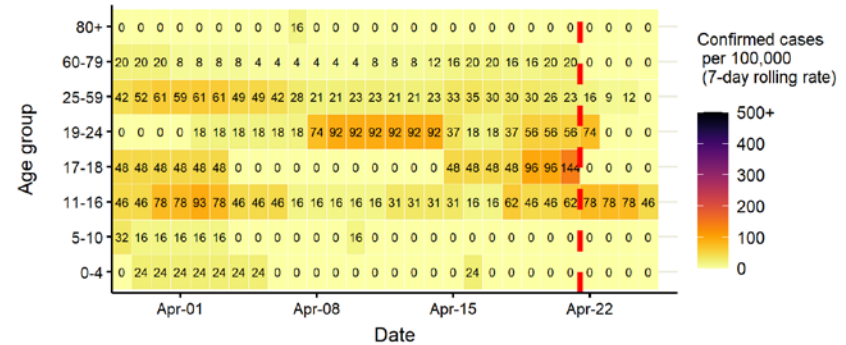
Daily cases from 1/10/2020: 60+ YEARS ONLY **NOTE: different y-axis scale**



4 days with incomplete data Pillar 1 Pillar 2 Total 7 day moving average (P1 + P2)



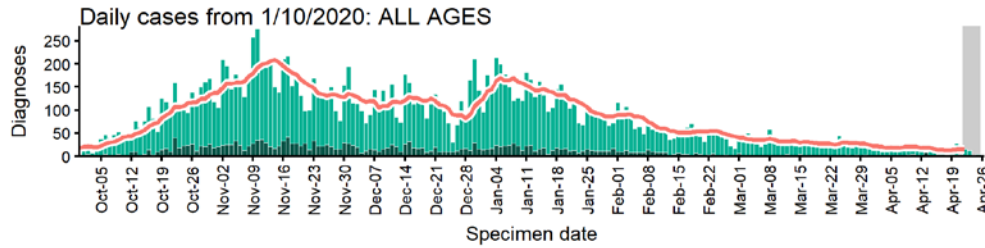
Age-stratified case rate heatmap for Staffordshire Moorlands: 29 Mar to 25 Apr 2021



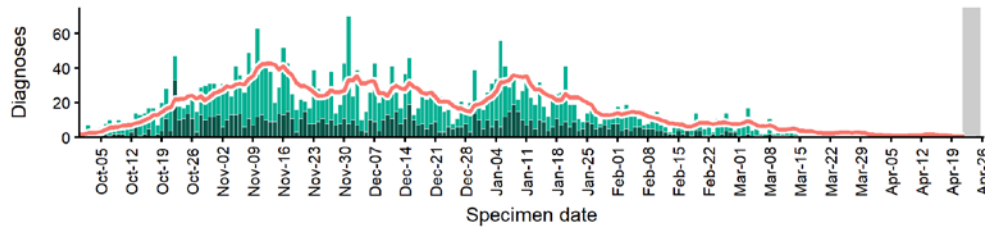
The red dashed line on the heatmaps show the last four days where data may be incomplete due to reporting delays and removal of LFDs with accompanying negative PCR results. Please consider this data provisional.

Stoke-on-Trent case numbers, testing numbers and positivity, 1 Oct to 25 Apr 2021

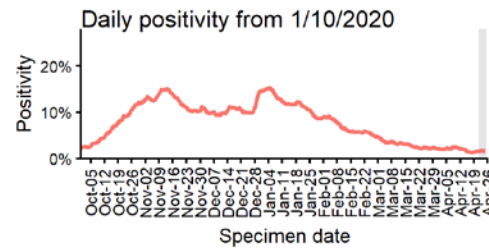
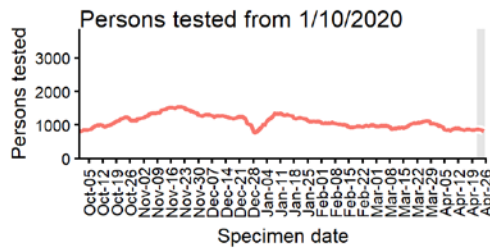
STOKE-ON-TRENT Cases and persons tested up to April 25 2021



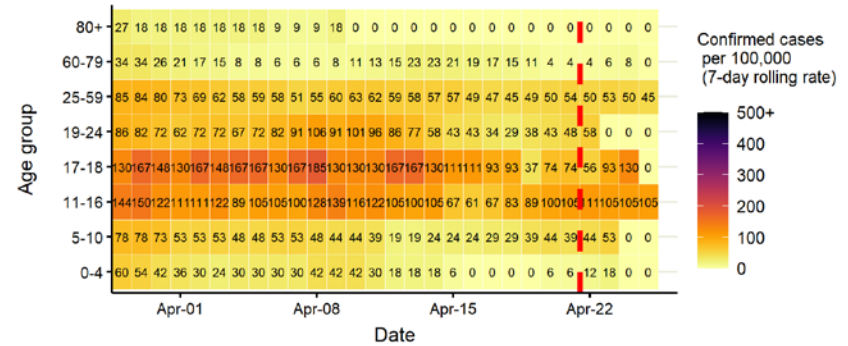
Daily cases from 1/10/2020: 60+ YEARS ONLY **NOTE: different y-axis scale**



4 days with incomplete data
 Pillar 1
 Pillar 2
 Total 7 day moving average (P1 + P2)



Age-stratified case rate heatmap for Stoke-on-Trent: 29 Mar to 25 Apr 2021

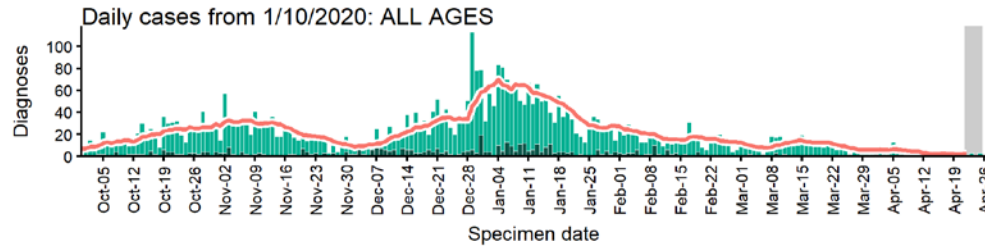


The red dashed line on the heatmaps show the last four days where data may be incomplete due to reporting delays and removal of LFDs with accompanying negative PCR results. Please consider this data provisional.

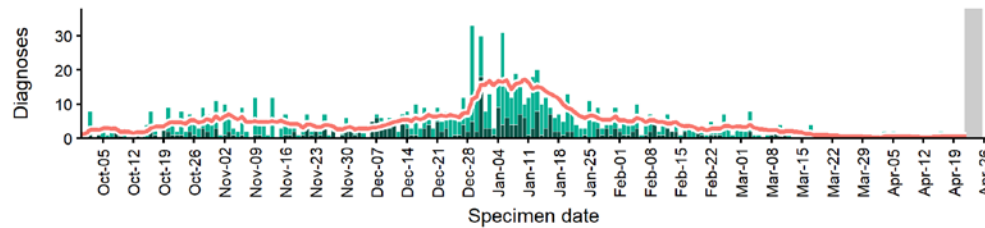
Data from SGSS. Produced by Outbreak Surveillance Team, PHE

Stratford-on-Avon case numbers, testing numbers and positivity, 1 Oct to 25 Apr 2021

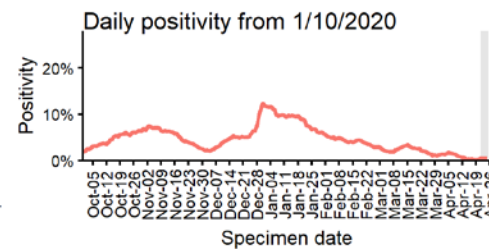
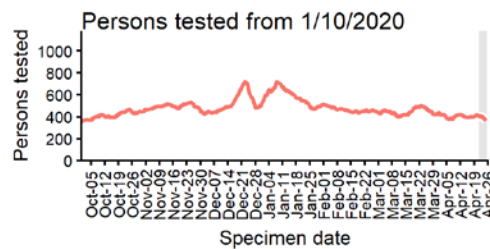
STRATFORD-ON-AVON Cases and persons tested up to April 25 2021



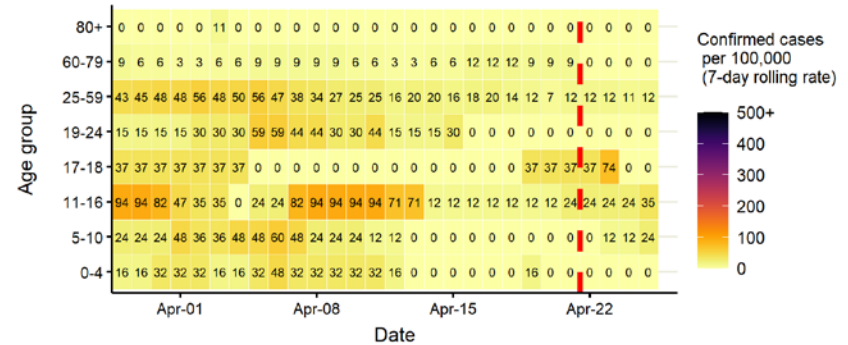
Daily cases from 1/10/2020: 60+ YEARS ONLY **NOTE: different y-axis scale**



4 days with incomplete data Pillar 1 Pillar 2 Total 7 day moving average (P1 + P2)



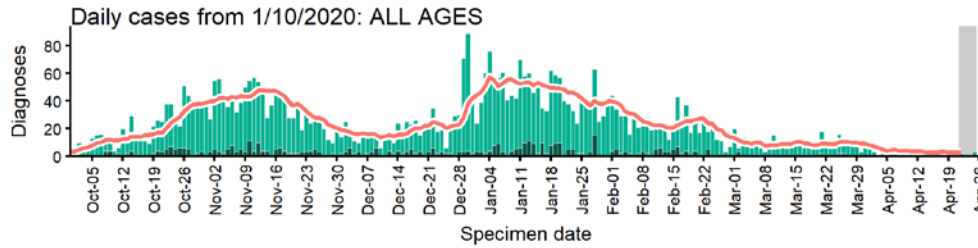
Age-stratified case rate heatmap for Stratford-on-Avon: 29 Mar to 25 Apr 2021



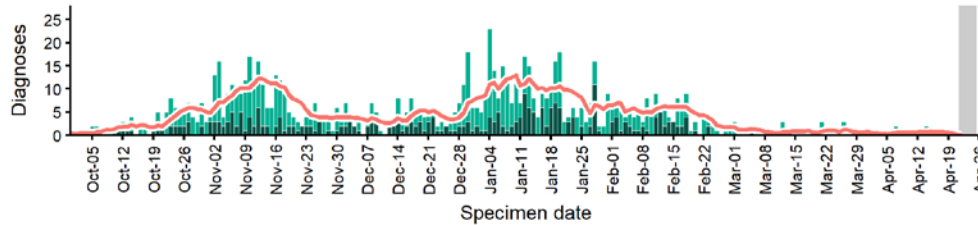
The red dashed line on the heatmaps show the last four days where data may be incomplete due to reporting delays and removal of LFDs with accompanying negative PCR results. Please consider this data provisional.

Tamworth case numbers, testing numbers and positivity, 1 Oct to 25 Apr 2021

TAMWORTH
Cases and persons tested up to April 25 2021

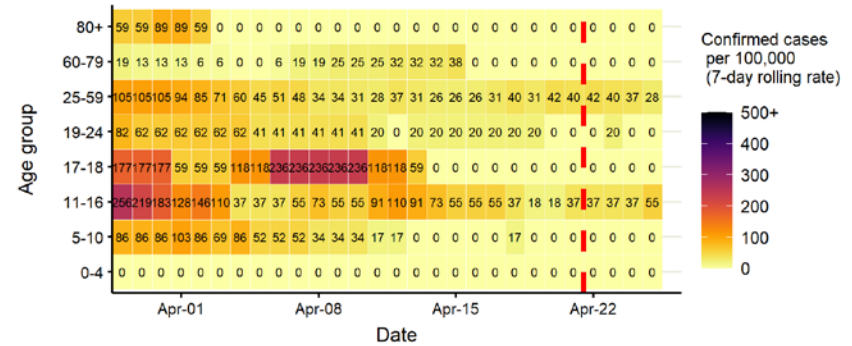


Daily cases from 1/10/2020: 60+ YEARS ONLY **NOTE: different y-axis scale**

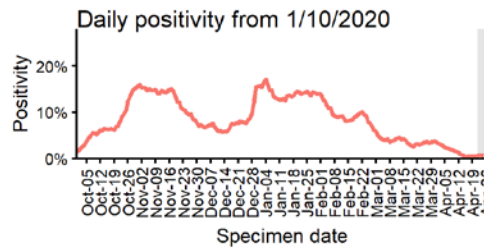
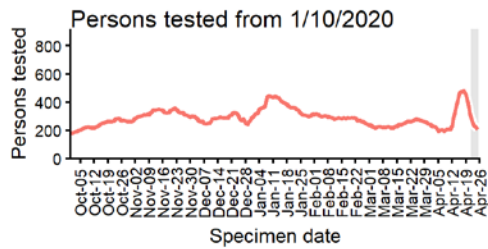


4 days with incomplete data Pillar 1 Pillar 2 Total 7 day moving average (P1 + P2)

Age-stratified case rate heatmap for Tamworth: 29 Mar to 25 Apr 2021



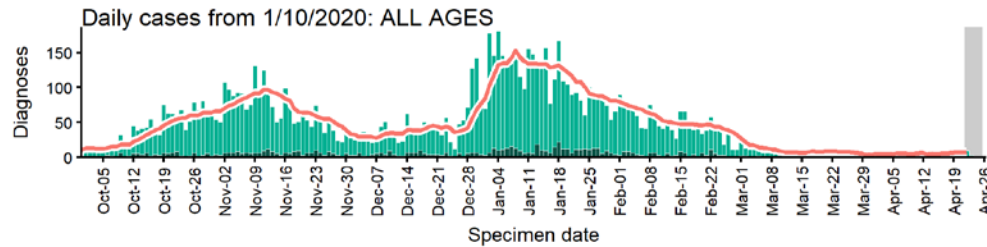
The red dashed line on the heatmaps show the last four days where data may be incomplete due to reporting delays and removal of LFDs with accompanying negative PCR results. Please consider this data provisional.



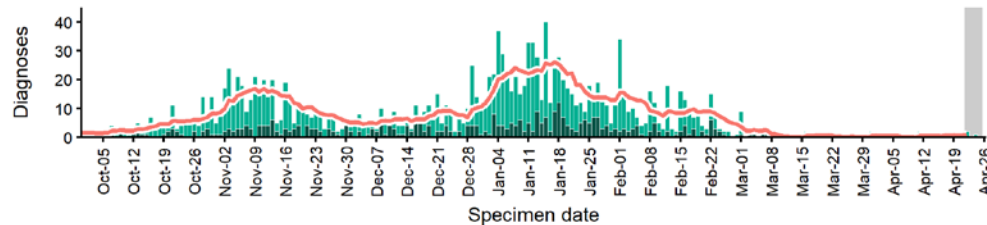
Data from SGSS. Produced by Outbreak Surveillance Team, PHE

Telford and Wrekin case numbers, testing numbers and positivity, 1 Oct to 25 Apr 2021

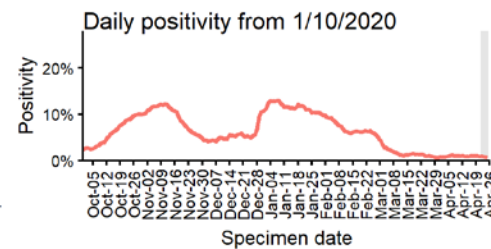
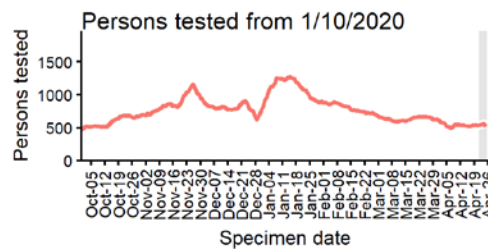
TELFORD AND WREKIN Cases and persons tested up to April 25 2021



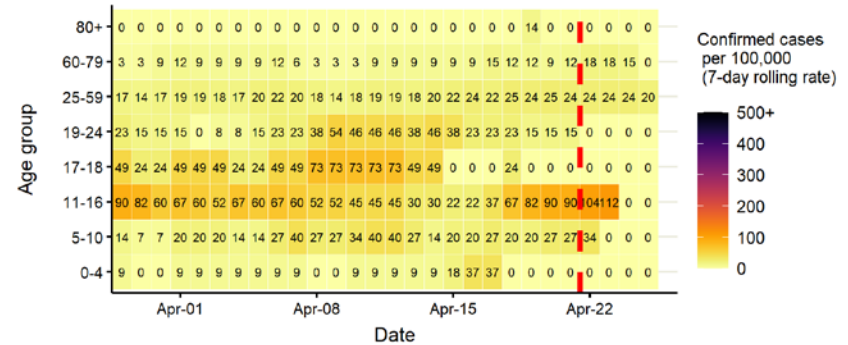
Daily cases from 1/10/2020: 60+ YEARS ONLY **NOTE: different y-axis scale**



4 days with incomplete data
 Pillar 1
 Pillar 2
 Total 7 day moving average (P1 + P2)



Age-stratified case rate heatmap for Telford and Wrekin: 29 Mar to 25 Apr 2021

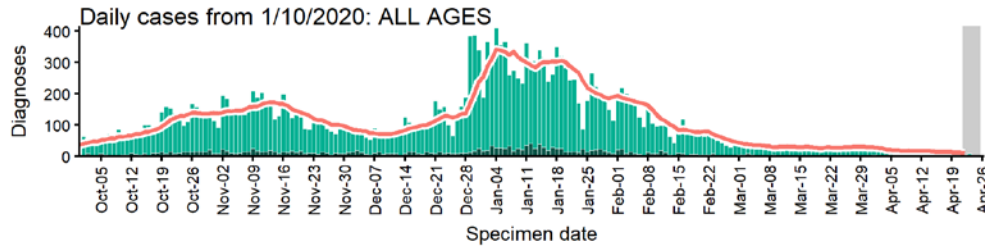


The red dashed line on the heatmaps show the last four days where data may be incomplete due to reporting delays and removal of LFDs with accompanying negative PCR results. Please consider this data provisional.

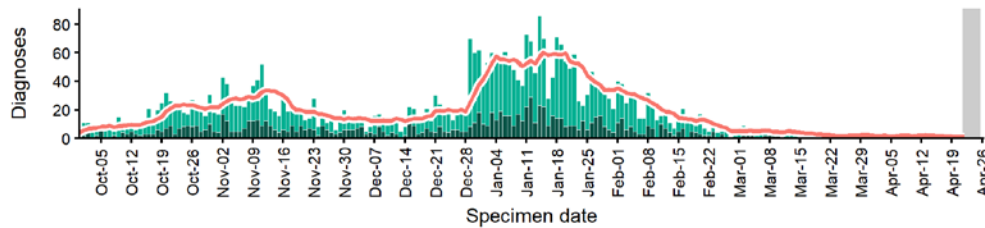
Data from SGSS. Produced by Outbreak Surveillance Team, PHE

Walsall case numbers, testing numbers and positivity, 1 Oct to 25 Apr 2021

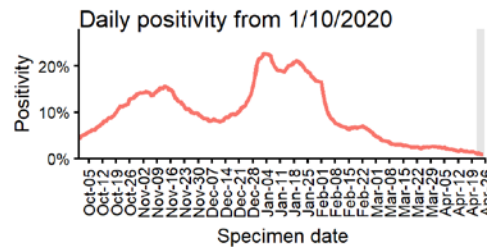
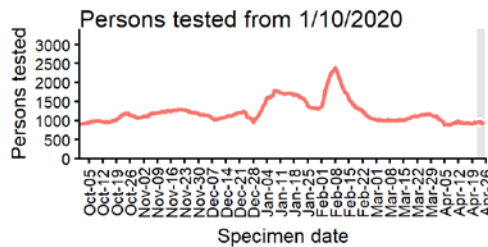
WALSALL
Cases and persons tested up to April 25 2021



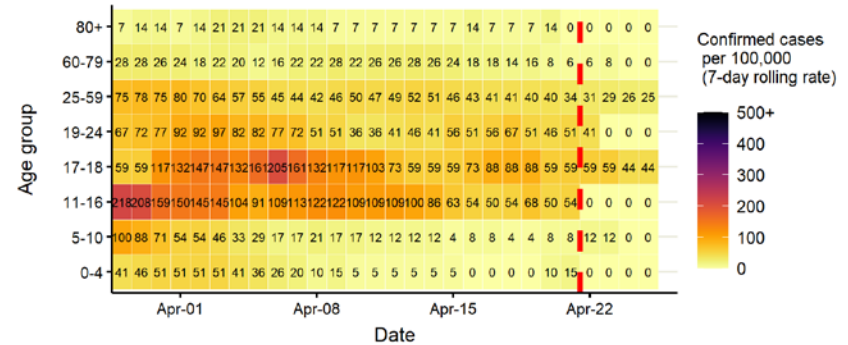
Daily cases from 1/10/2020: 60+ YEARS ONLY **NOTE: different y-axis scale**



4 days with incomplete data Pillar 1 Pillar 2 Total 7 day moving average (P1 + P2)



Age-stratified case rate heatmap for Walsall: 29 Mar to 25 Apr 2021

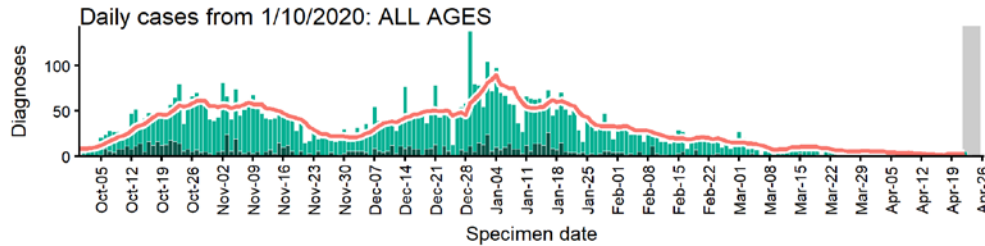


The red dashed line on the heatmaps show the last four days where data may be incomplete due to reporting delays and removal of LFDs with accompanying negative PCR results. Please consider this data provisional.

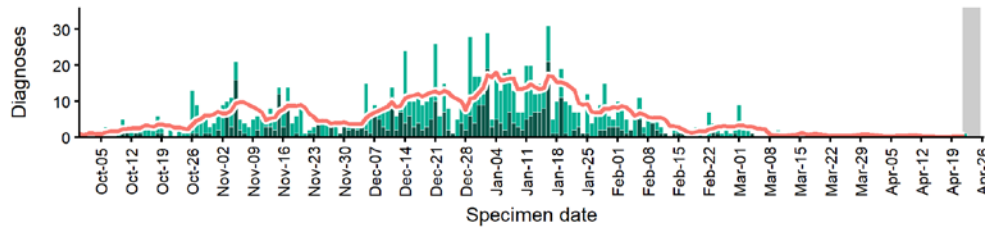
Data from SGSS. Produced by Outbreak Surveillance Team, PHE

Warwick case numbers, testing numbers and positivity, 1 Oct to 25 Apr 2021

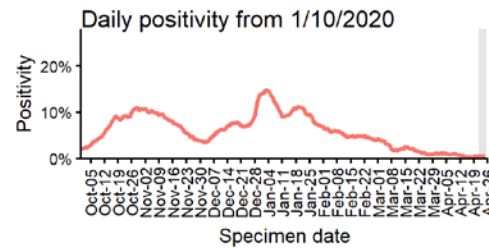
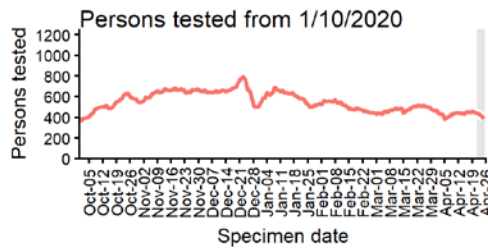
WARWICK Cases and persons tested up to April 25 2021



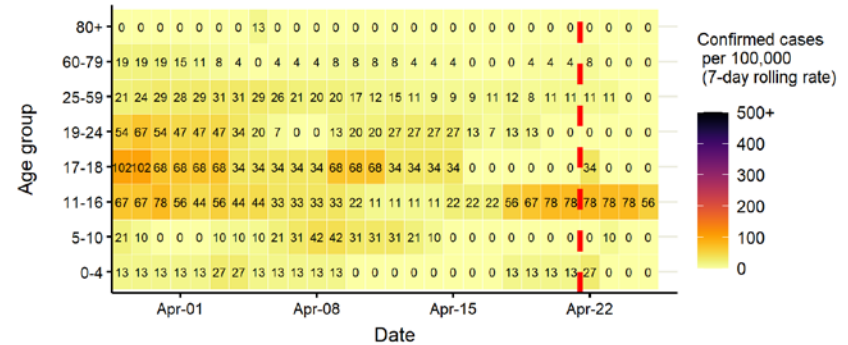
Daily cases from 1/10/2020: 60+ YEARS ONLY **NOTE: different y-axis scale**



4 days with incomplete data
 Pillar 1
 Pillar 2
 Total 7 day moving average (P1 + P2)



Age-stratified case rate heatmap for Warwick: 29 Mar to 25 Apr 2021

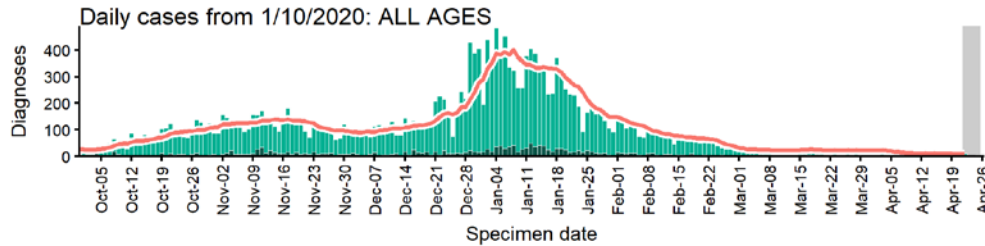


The red dashed line on the heatmaps show the last four days where data may be incomplete due to reporting delays and removal of LFDs with accompanying negative PCR results. Please consider this data provisional.

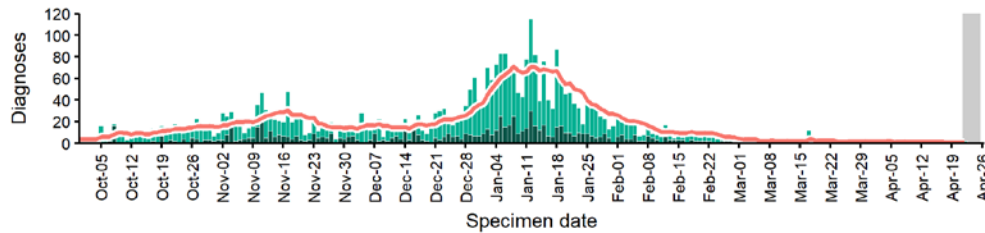
Data from SGSS. Produced by Outbreak Surveillance Team, PHE

Wolverhampton case numbers, testing numbers and positivity, 1 Oct to 25 Apr 2021

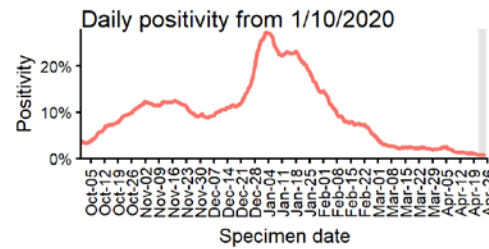
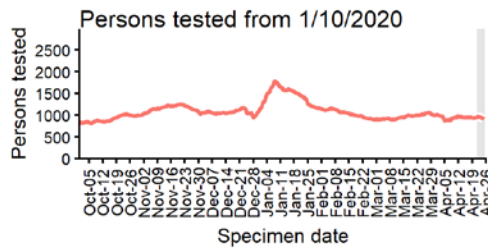
WOLVERHAMPTON Cases and persons tested up to April 25 2021



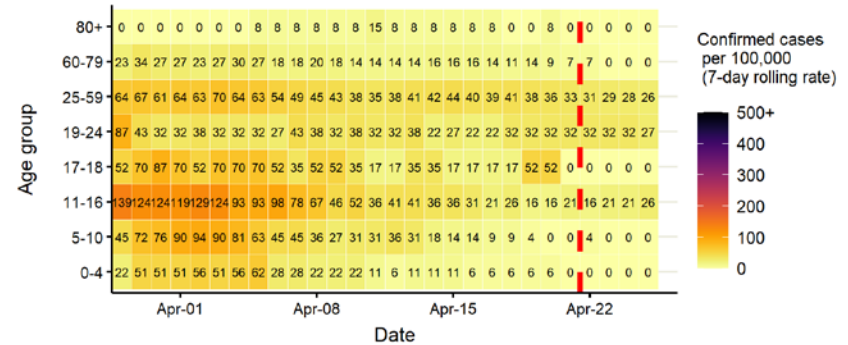
Daily cases from 1/10/2020: 60+ YEARS ONLY **NOTE: different y-axis scale**



4 days with incomplete data
 Pillar 1
 Pillar 2
 Total 7 day moving average (P1 + P2)



Age-stratified case rate heatmap for Wolverhampton: 29 Mar to 25 Apr 2021

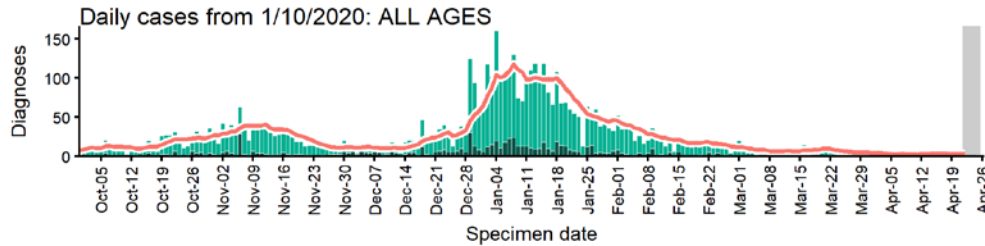


The red dashed line on the heatmaps show the last four days where data may be incomplete due to reporting delays and removal of LFDs with accompanying negative PCR results. Please consider this data provisional.

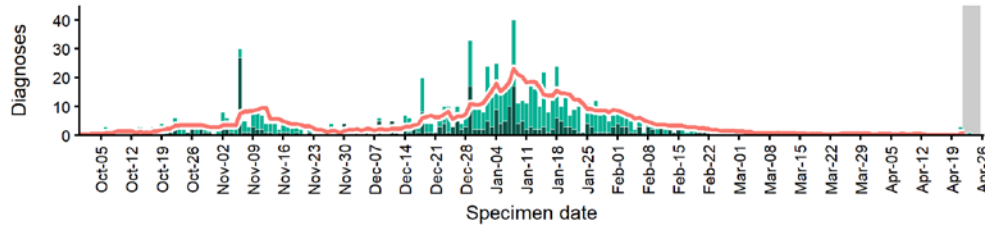
Data from SGSS. Produced by Outbreak Surveillance Team, PHE

Worcester case numbers, testing numbers and positivity, 1 Oct to 25 Apr 2021

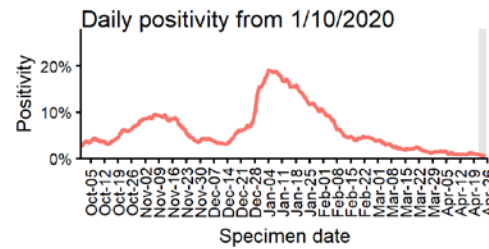
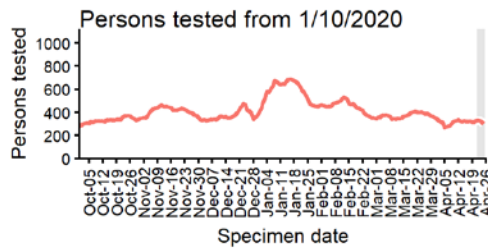
WORCESTER
Cases and persons tested up to April 25 2021



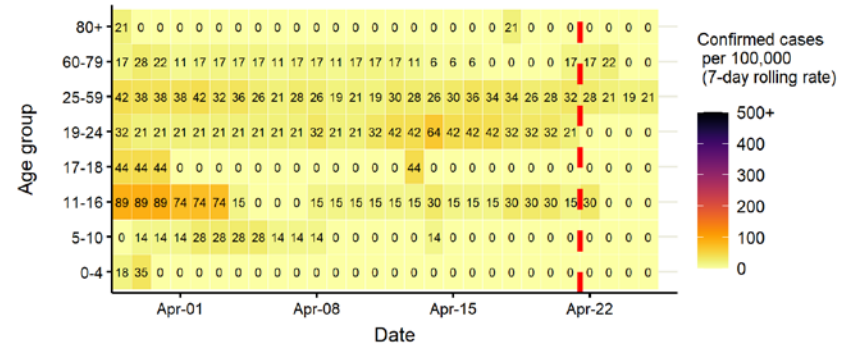
Daily cases from 1/10/2020: 60+ YEARS ONLY **NOTE: different y-axis scale**



4 days with incomplete data Pillar 1 Pillar 2 Total 7 day moving average (P1 + P2)



Age-stratified case rate heatmap for Worcester: 29 Mar to 25 Apr 2021

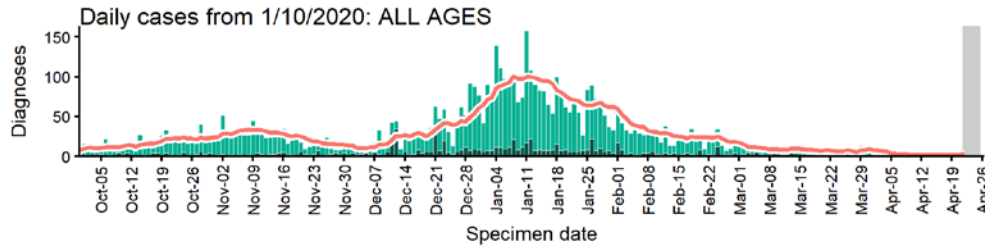


The red dashed line on the heatmaps show the last four days where data may be incomplete due to reporting delays and removal of LFDs with accompanying negative PCR results. Please consider this data provisional.

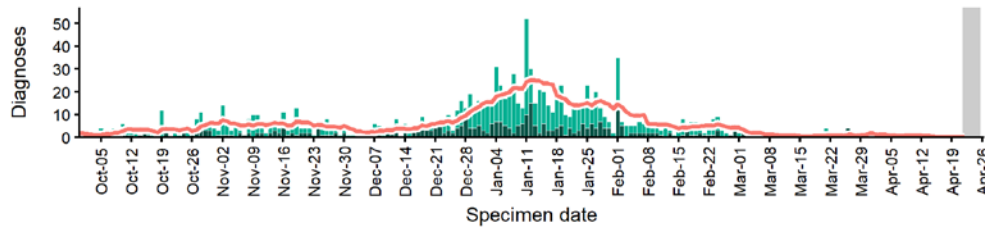
Data from SGSS. Produced by Outbreak Surveillance Team, PHE

Wychavon case numbers, testing numbers and positivity, 1 Oct to 25 Apr 2021

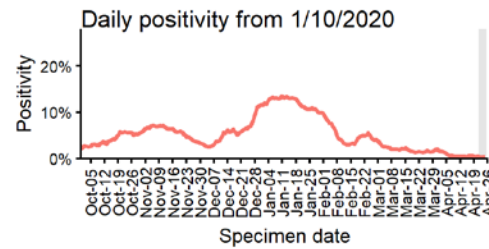
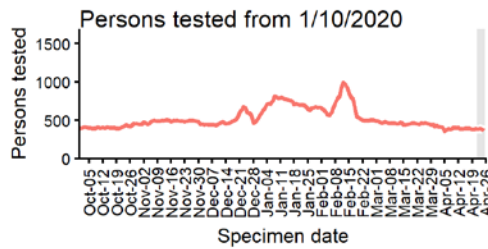
WYCHAVON
Cases and persons tested up to April 25 2021



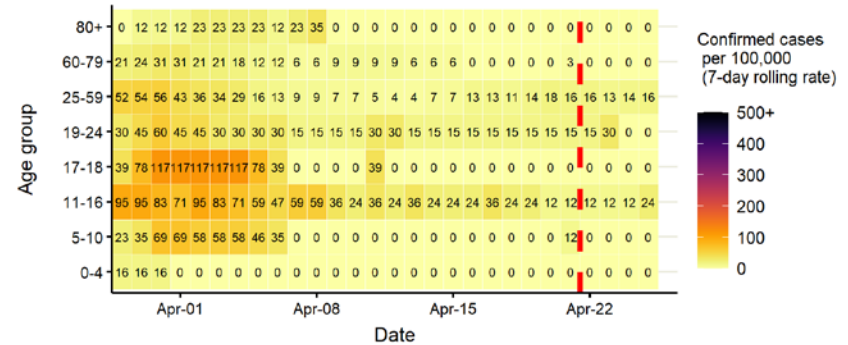
Daily cases from 1/10/2020: 60+ YEARS ONLY **NOTE: different y-axis scale**



4 days with incomplete data
 Pillar 1
 Pillar 2
 Total 7 day moving average (P1 + P2)



Age-stratified case rate heatmap for Wychavon: 29 Mar to 25 Apr 2021

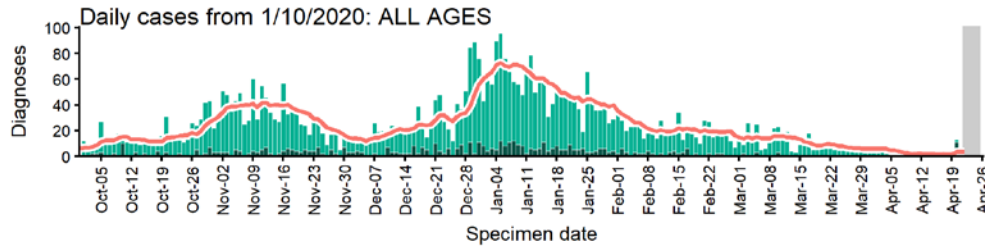


The red dashed line on the heatmaps show the last four days where data may be incomplete due to reporting delays and removal of LFDs with accompanying negative PCR results. Please consider this data provisional.

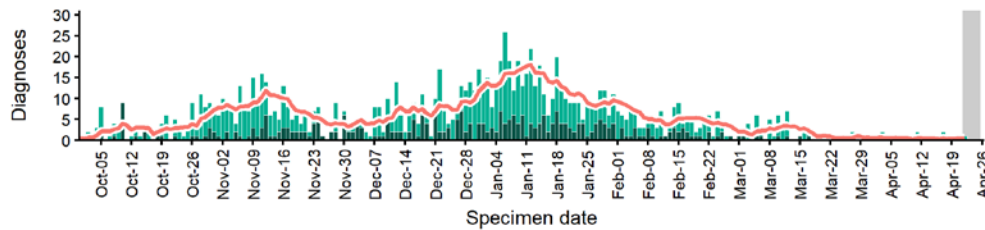
Data from SGSS. Produced by Outbreak Surveillance Team, PHE

Wyre Forest case numbers, testing numbers and positivity, 1 Oct to 25 Apr 2021

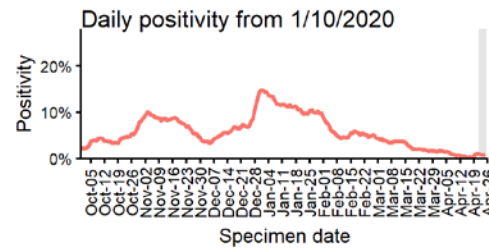
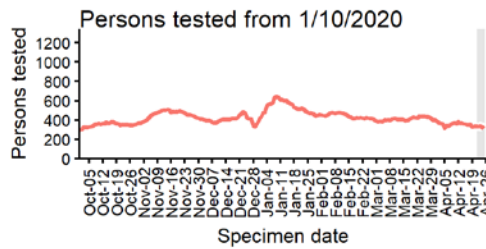
WYRE FOREST
Cases and persons tested up to April 25 2021



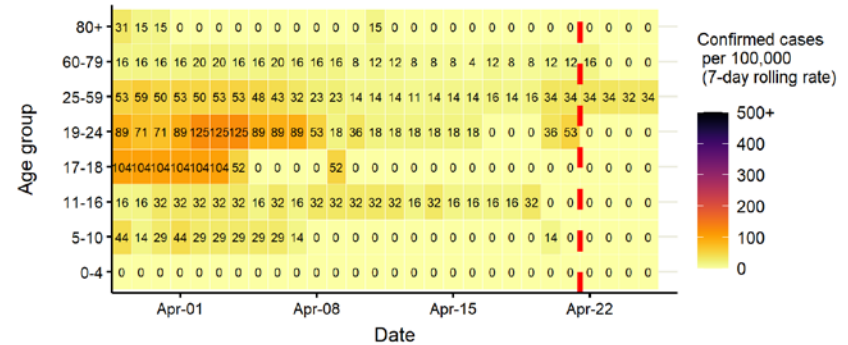
Daily cases from 1/10/2020: 60+ YEARS ONLY **NOTE: different y-axis scale**



4 days with incomplete data Pillar 1 Pillar 2 Total 7 day moving average (P1 + P2)



Age-stratified case rate heatmap for Wyre Forest: 29 Mar to 25 Apr 2021



The red dashed line on the heatmaps show the last four days where data may be incomplete due to reporting delays and removal of LFDs with accompanying negative PCR results. Please consider this data provisional.

Data from SGSS. Produced by Outbreak Surveillance Team, PHE

© Crown copyright 2020

www.gov.uk/dhsc

This publication is licensed under the terms of the Open Government Licence v3.0 except where otherwise stated. To view this licence, visit nationalarchives.gov.uk/doc/open-government-licence/version/3

Where we have identified any third party copyright information you will need to obtain permission from the copyright holders concerned.

OGL