



Department
of Health &
Social Care

East of England lower tier local authority watchlist, epidemiological charts

Produced 26 April 2021

Notes

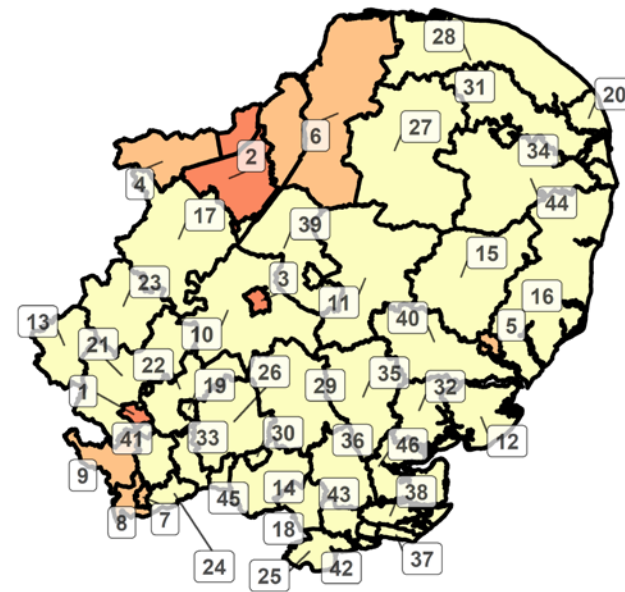
- This data is provided by Public Health England for the purpose of monitoring and supporting the management of Covid-19 infections in local authorities.
- The reports are produced using 2019 Office for National Statistics population data.
- If you would like to know the weekly trend for the case rate charts and persons tested chart please see lower tier local authority watchlist.

Weekly case rate per 100,000 population by local authority from 15 Apr to 21 Apr 2021

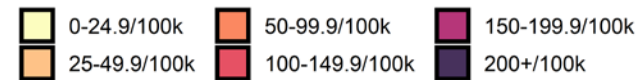
Rank	Local Authority	Case Rate (per 100,000)	Number of cases (1 week)
1	Luton	60.5	129
2	Fenland	55.0	56
3	Cambridge	54.5	68
4	Peterborough	46.5	94
5	Ipswich	28.5	39
6	King's Lynn and West Norfolk	28.4	43
7	Watford	28.0	27
8	Three Rivers	27.9	26
9	Dacorum	25.2	39
10	South Cambridgeshire	23.3	37
11	West Suffolk	22.3	40
12	Tendring	21.2	31
13	Milton Keynes	20.0	54
14	Epping Forest	19.7	26
15	Mid Suffolk	19.3	20
16	East Suffolk	19.2	48
17	Huntingdonshire	19.1	34
18	Brentwood	18.2	14
19	Stevenage	18.2	16
20	Great Yarmouth	18.1	18
21	Central Bedfordshire	17.7	51
22	North Hertfordshire	17.2	23
23	Bedford	16.7	29

Rank	Local Authority	Case Rate (per 100,000)	Number of cases (1 week)
24	Hertsmere	15.2	16
25	Thurrock	14.9	26
26	East Hertfordshire	14.7	22
27	Breckland	14.3	20
28	North Norfolk	14.3	15
29	Uttlesford	14.2	13
30	Harlow	13.8	12
31	Broadland	13.0	17
32	Colchester	12.3	24
33	Welwyn Hatfield	12.2	15
34	Norwich	12.1	17
35	Braintree	11.8	18
36	Chelmsford	11.8	21
37	Southend-on-Sea	11.5	21
38	Rochford	11.4	10
39	East Cambridgeshire	11.1	10
40	Babergh	10.9	10
41	St Albans	10.8	16
42	Castle Point	10.0	9
43	Basildon	9.1	17
44	South Norfolk	8.5	12
45	Broxbourne	6.2	6
46	Maldon	0.0	0

East of England
COVID-19 cases: 15 Apr to 21 Apr 2021
 Weekly case rates per 100,000 population by local authority



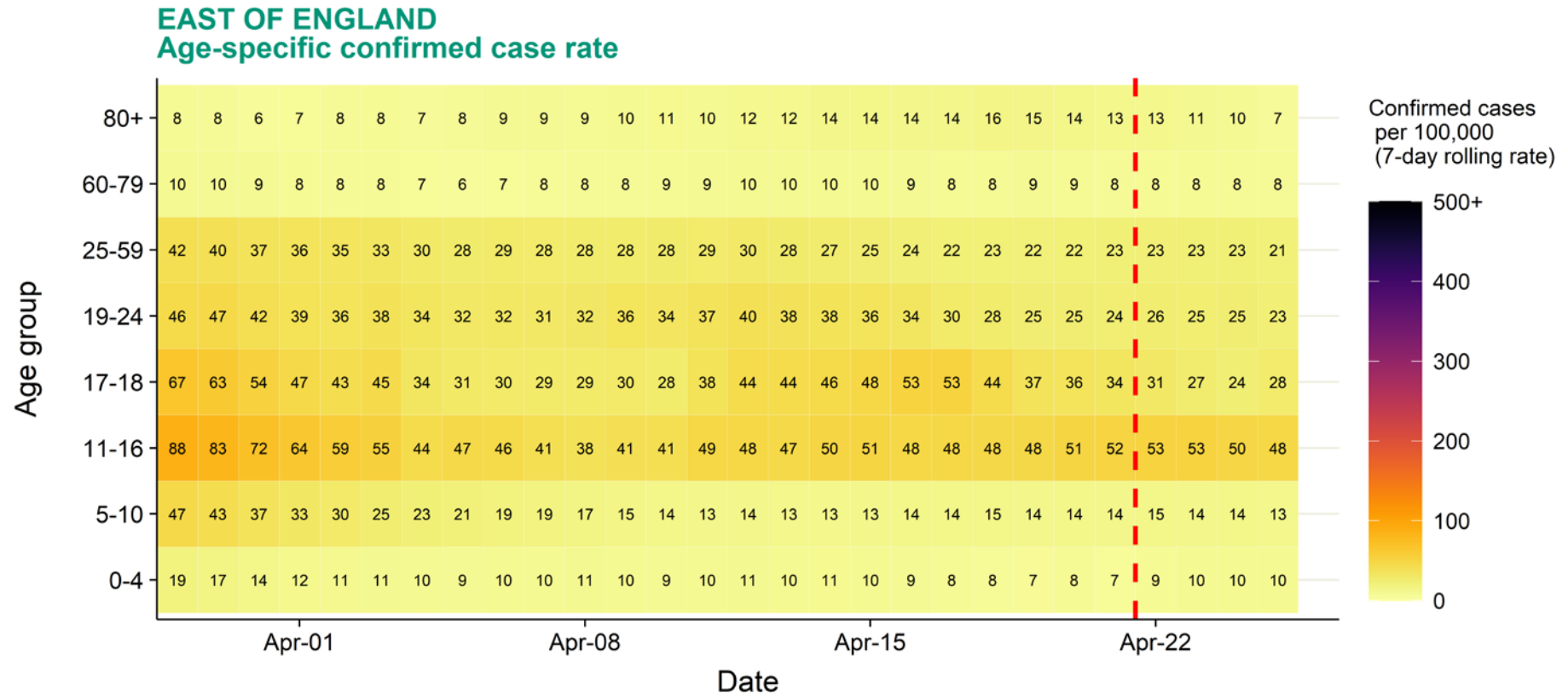
Covid-19 rate by local authority



Data from SGSS; Pillar 1 and 2 testing. Figure by Outbreak Surveillance Team, Public Health England.

Contains National Statistics data including 2019 population estimates Â© Crown copyright and database right 2020

East of England age-stratified heatmap of weekly case rate, 29 Mar to 21 Apr 2021



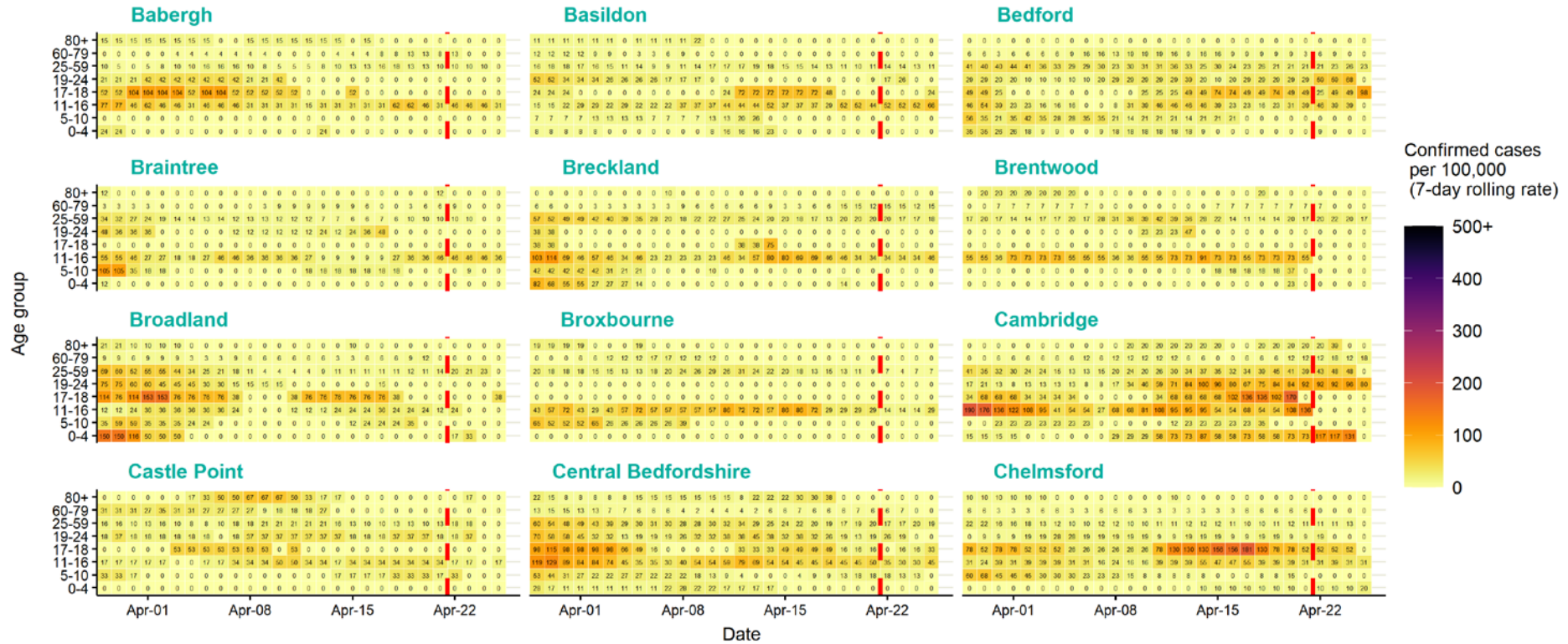
Source: Case data from SGSS. Produced by Outbreak Surveillance Team, PHE

The red dashed line on the heatmaps show the last four days where data may be incomplete due to reporting delays and removal of LFDs with accompanying negative PCR results.

Please consider this data provisional.

East of England age-stratified heatmap of weekly case rate by local authority, 29 Mar to 21 Apr 2021

EAST OF ENGLAND LOCAL AUTHORITIES Age-specific confirmed case rate



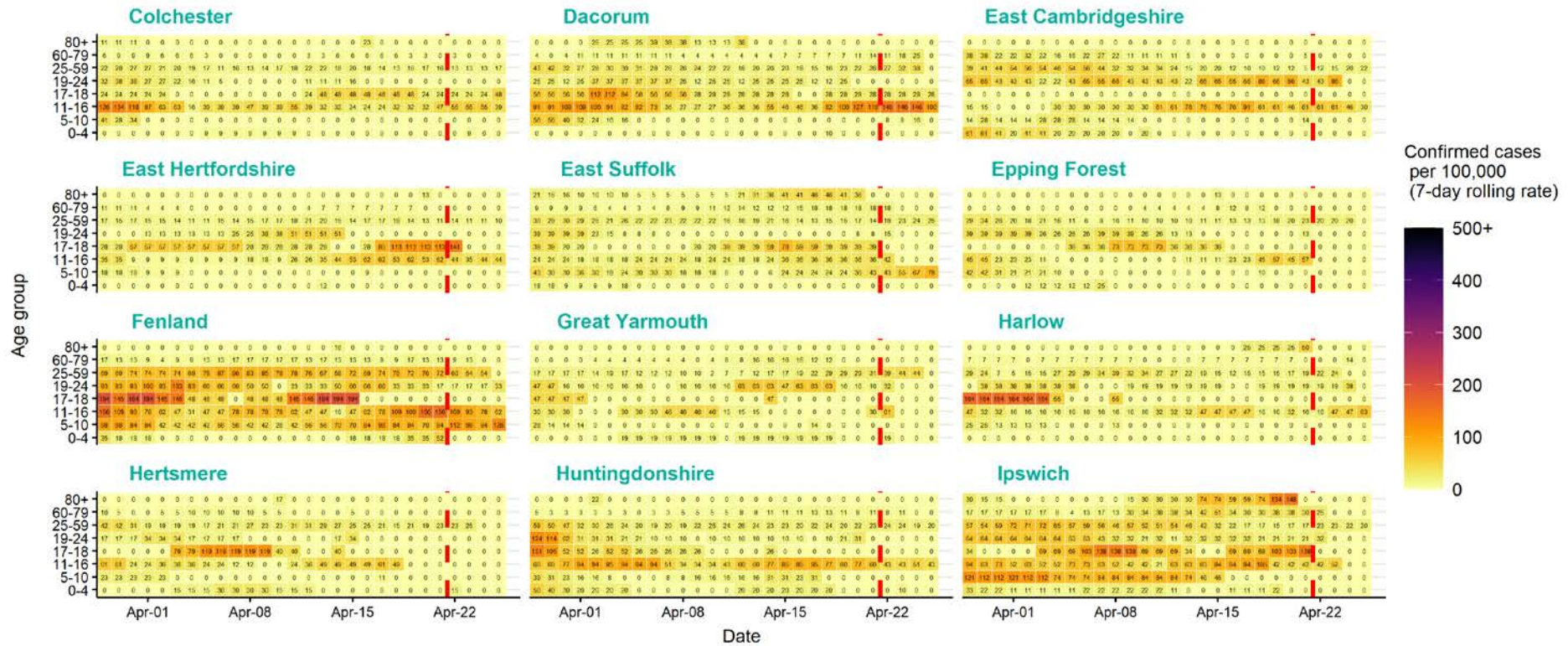
Source: Case data from SGSS. Produced by Outbreak Surveillance Team, PHE

The red dashed line on the heatmaps show the last four days where data may be incomplete due to reporting delays and removal of LFDs with accompanying negative PCR results.

Please consider this data provisional.

East of England age-stratified heatmap of weekly case rate by local authority, 29 Mar to 21 Apr 2021

EAST OF ENGLAND LOCAL AUTHORITIES Age-specific confirmed case rate



Source: Case data from SGSS. Produced by Outbreak Surveillance Team, PHE

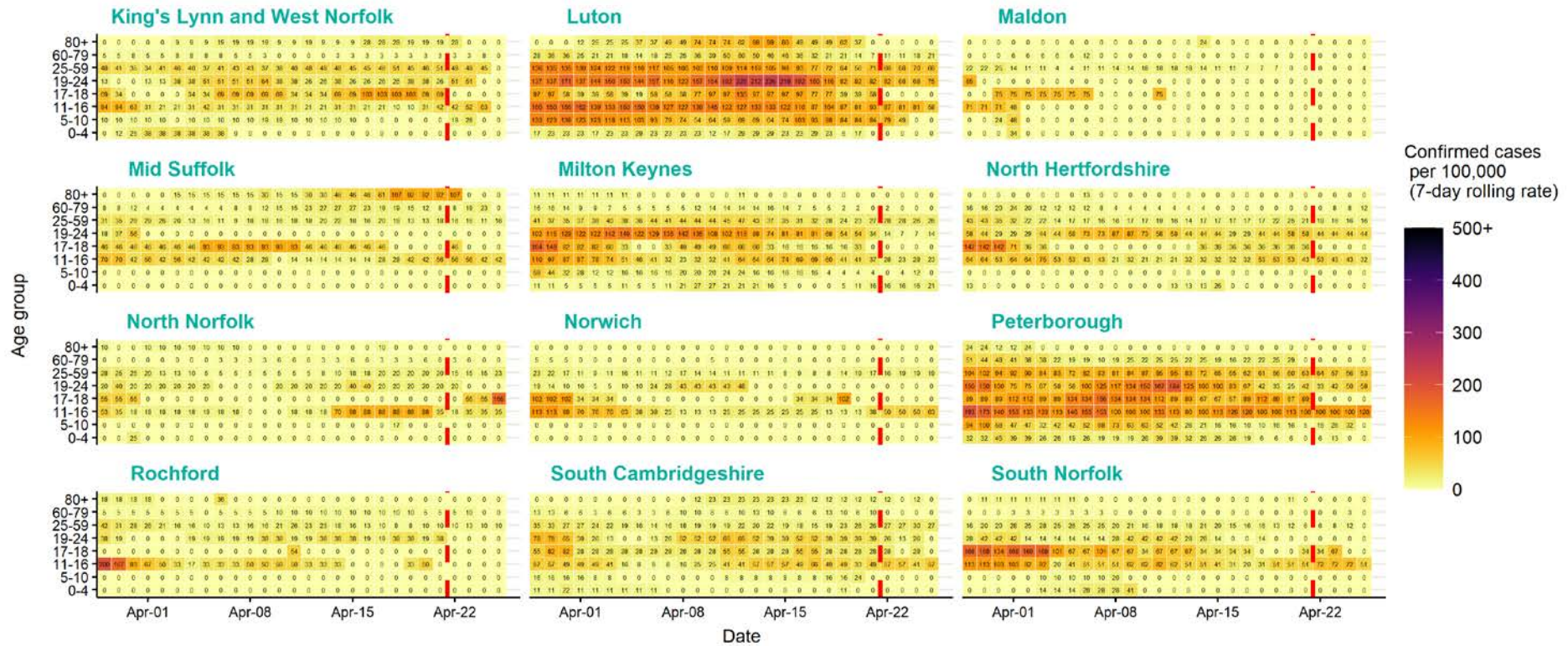
The red dashed line on the heatmaps show the last four days where data may be incomplete due to reporting delays

and removal of LFDs with accompanying negative PCR results.

Please consider this data provisional.

East of England age-stratified heatmap of weekly case rate by local authority, 29 Mar to 21 Apr 2021

EAST OF ENGLAND LOCAL AUTHORITIES Age-specific confirmed case rate



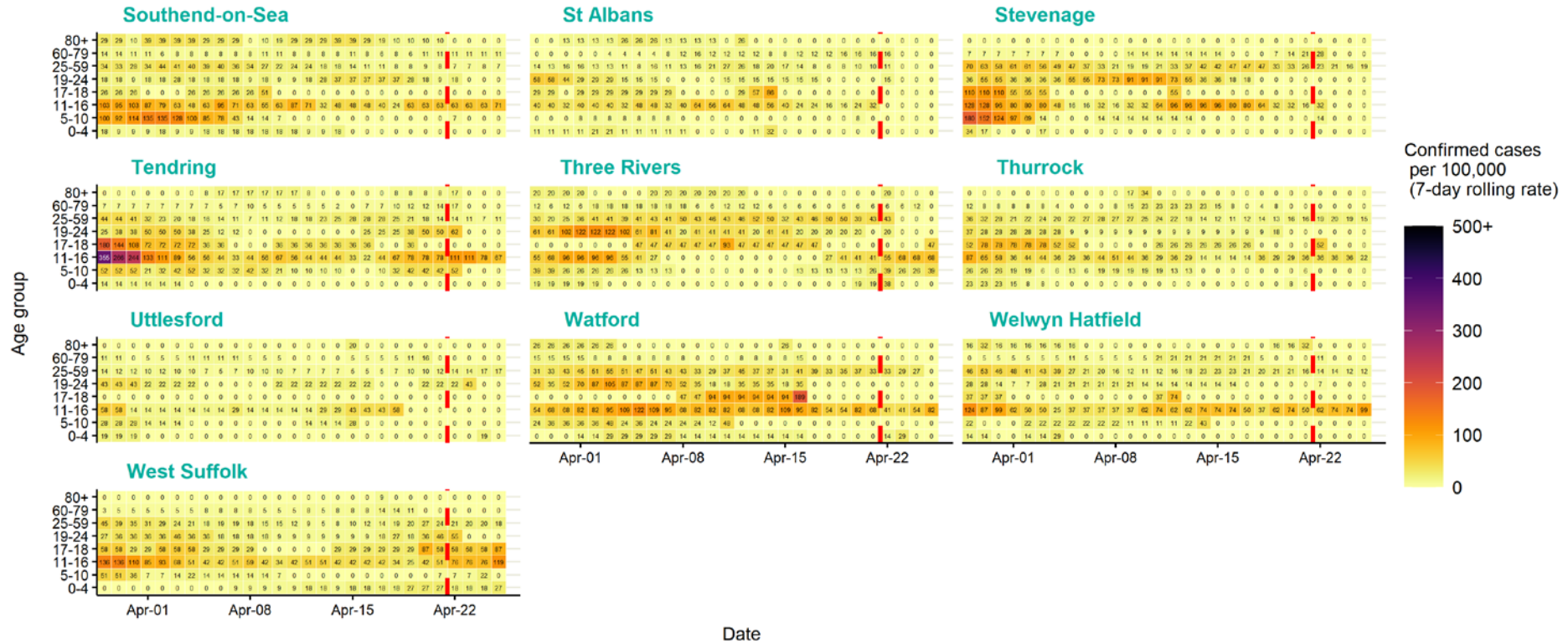
Source: Case data from SGSS. Produced by Outbreak Surveillance Team, PHE

The red dashed line on the heatmaps show the last four days where data may be incomplete due to reporting delays and removal of LFDs with accompanying negative PCR results.

Please consider this data provisional.

East of England age-stratified heatmap of weekly case rate by local authority, 29 Mar to 21 Apr 2021

EAST OF ENGLAND LOCAL AUTHORITIES Age-specific confirmed case rate



Date

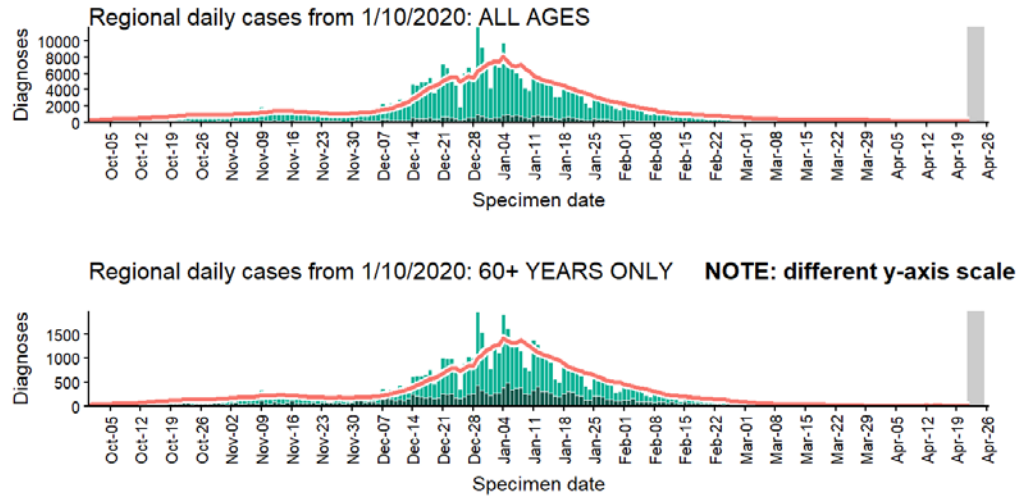
Source: Case data from SGSS. Produced by Outbreak Surveillance Team, PHE

The red dashed line on the heatmaps show the last four days where data may be incomplete due to reporting delays and removal of LFDs with accompanying negative PCR results.

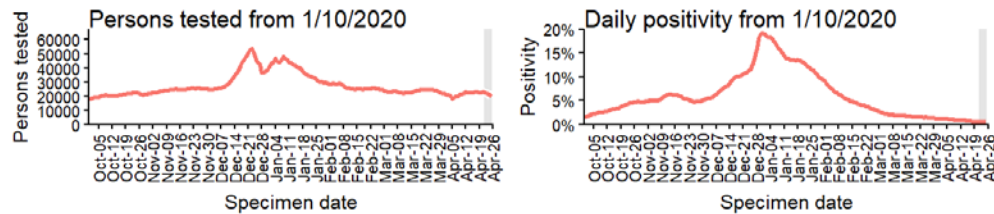
Please consider this data provisional.

East of England regional case numbers, testing numbers and positivity, 1 Oct to 25 Apr 2021

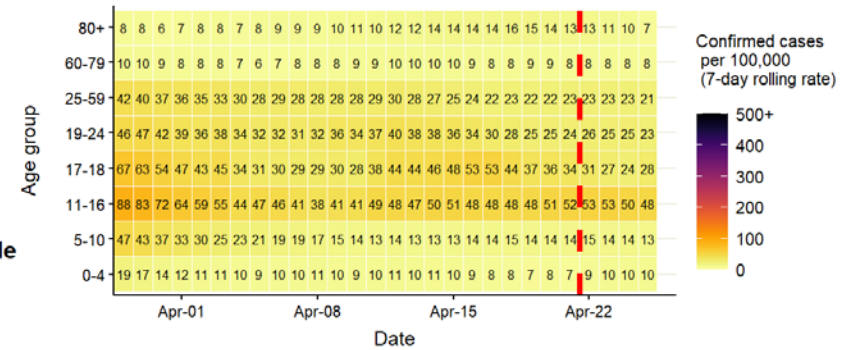
EAST OF ENGLAND Cases and persons tested up to April 25 2021



4 days with incomplete data
 Pillar 1
 Pillar 2
 Total 7 day moving average (P1 + P2)



Regional age-stratified case rate heatmap for East of England: 29 Mar to 25 Apr 2021,



The red dotted line denotes the last four days, subject to reporting delays

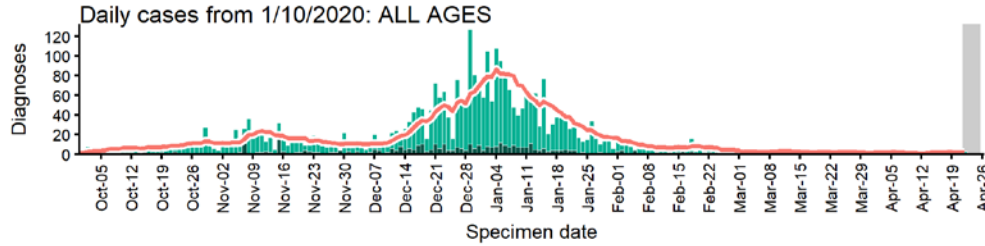
Data from SGSS. Produced by Outbreak Surveillance Team, PHE

The red dashed line on the heatmaps show the last four days where data may be incomplete due to reporting delays and removal of LFDs with accompanying negative PCR results.

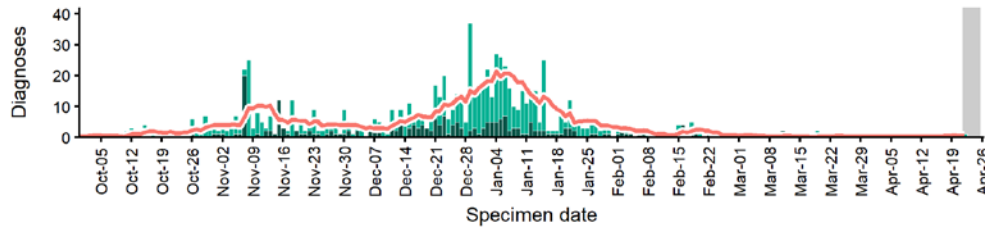
Please consider this data provisional.

Babergh case numbers, testing numbers and positivity, 1 Oct to 25 Apr 2021

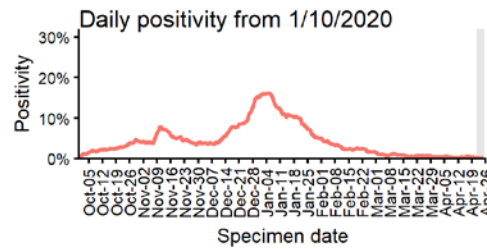
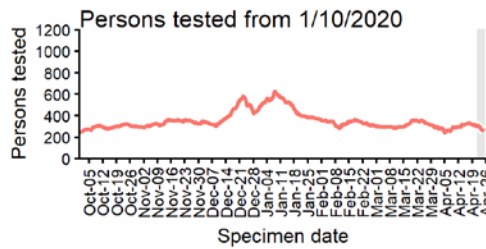
BABERGH Cases and persons tested up to April 25 2021



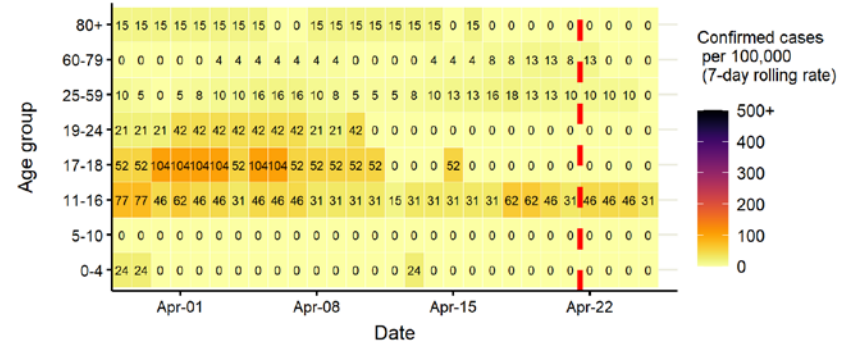
Daily cases from 1/10/2020: 60+ YEARS ONLY **NOTE: different y-axis scale**



4 days with incomplete data Pillar 1 Pillar 2 Total 7 day moving average (P1 + P2)



Age-stratified case rate heatmap for Babergh: 29 Mar to 25 Apr 2021

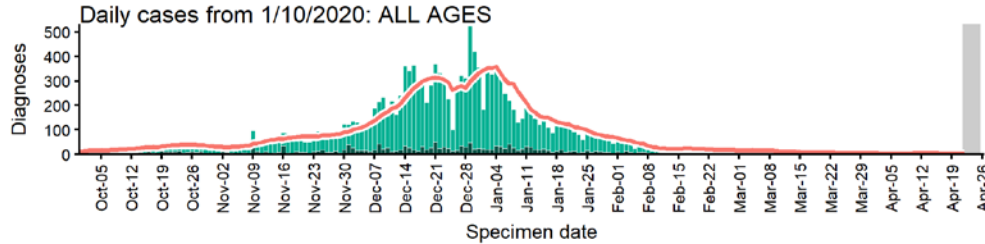


The red dashed line on the heatmaps show the last four days where data may be incomplete due to reporting delays and removal of LFDs with accompanying negative PCR results. Please consider this data provisional.

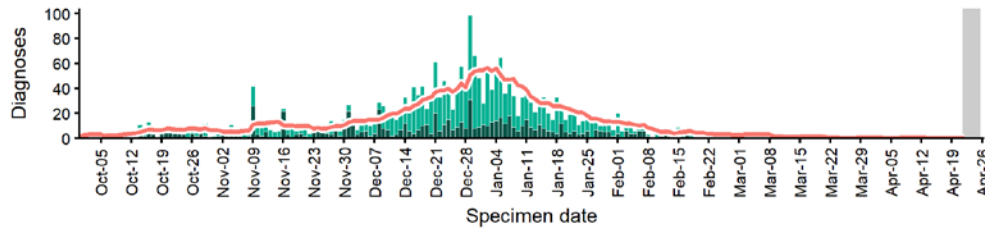
Data from SGSS. Produced by Outbreak Surveillance Team, PHE

Basildon case numbers, testing numbers and positivity, 1 Oct to 25 Apr 2021

BASILDON
Cases and persons tested up to April 25 2021

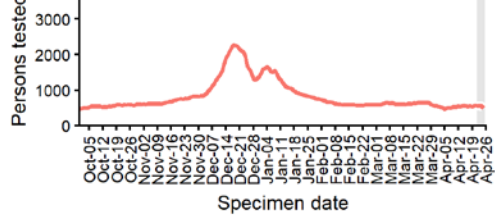


Daily cases from 1/10/2020: 60+ YEARS ONLY **NOTE: different y-axis scale**

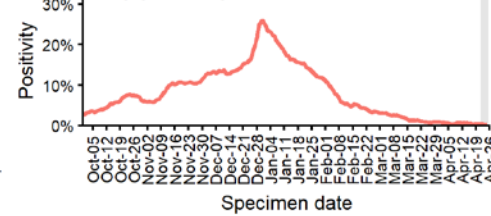


4 days with incomplete data Pillar 1 Pillar 2 Total 7 day moving average (P1 + P2)

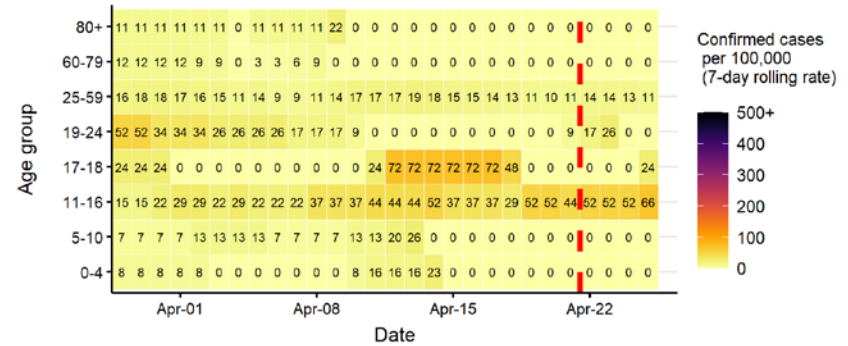
Persons tested from 1/10/2020



Daily positivity from 1/10/2020



Age-stratified case rate heatmap for Basildon: 29 Mar to 25 Apr 2021

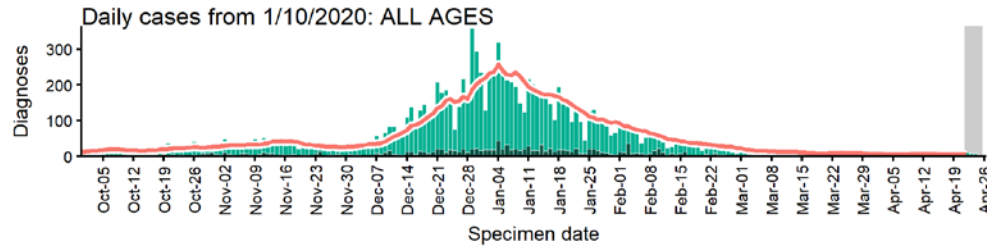


The red dashed line on the heatmaps show the last four days where data may be incomplete due to reporting delays and removal of LFDs with accompanying negative PCR results. Please consider this data provisional.

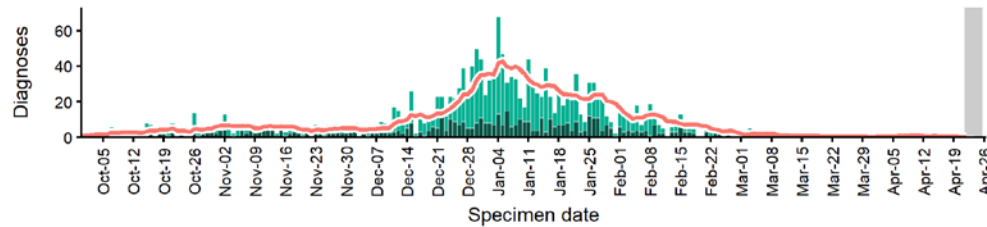
Data from SGSS. Produced by Outbreak Surveillance Team, PHE

Bedford case numbers, testing numbers and positivity, 1 Oct to 25 Apr 2021

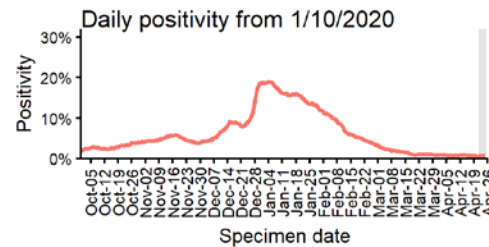
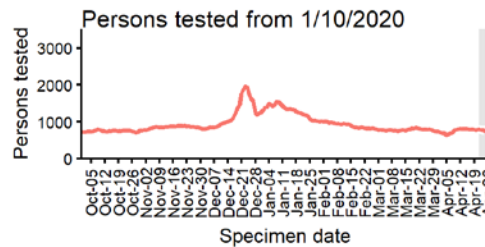
BEDFORD Cases and persons tested up to April 25 2021



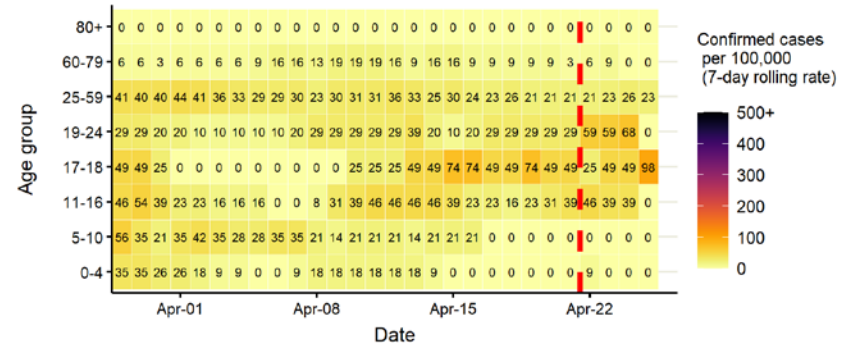
Daily cases from 1/10/2020: 60+ YEARS ONLY **NOTE: different y-axis scale**



4 days with incomplete data Pillar 1 Pillar 2 Total 7 day moving average (P1 + P2)



Age-stratified case rate heatmap for Bedford: 29 Mar to 25 Apr 2021

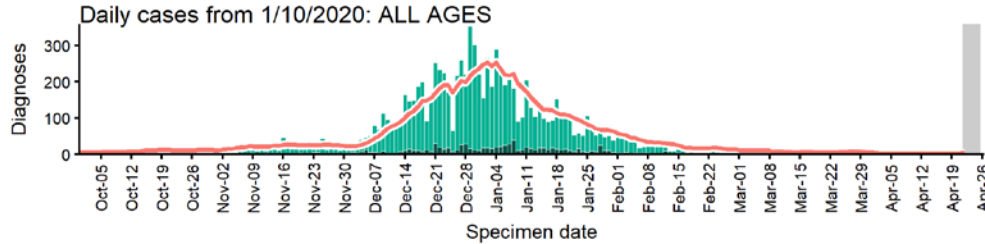


The red dashed line on the heatmaps show the last four days where data may be incomplete due to reporting delays and removal of LFDs with accompanying negative PCR results. Please consider this data provisional.

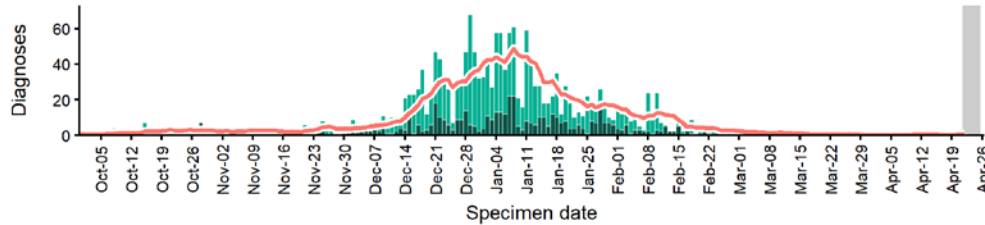
Data from SGSS. Produced by Outbreak Surveillance Team, PHE

Braintree case numbers, testing numbers and positivity, 1 Oct to 25 Apr 2021

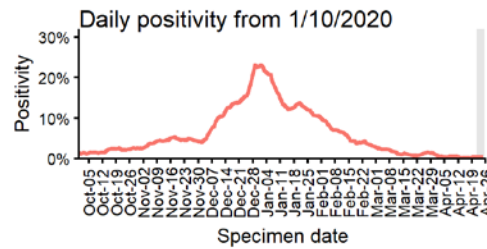
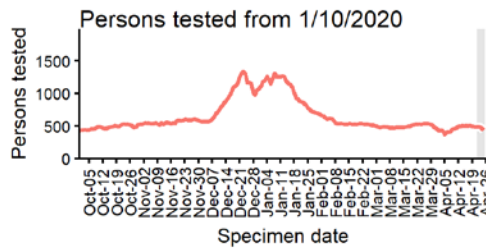
BRAINTREE Cases and persons tested up to April 25 2021



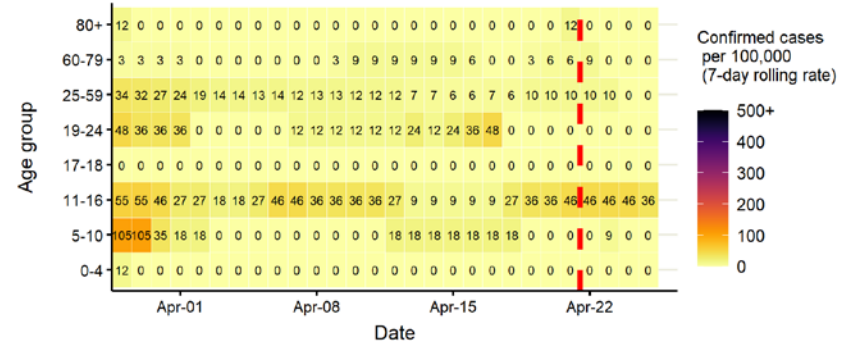
Daily cases from 1/10/2020: 60+ YEARS ONLY **NOTE: different y-axis scale**



4 days with incomplete data Pillar 1 Pillar 2 Total 7 day moving average (P1 + P2)



Age-stratified case rate heatmap for Braintree: 29 Mar to 25 Apr 2021

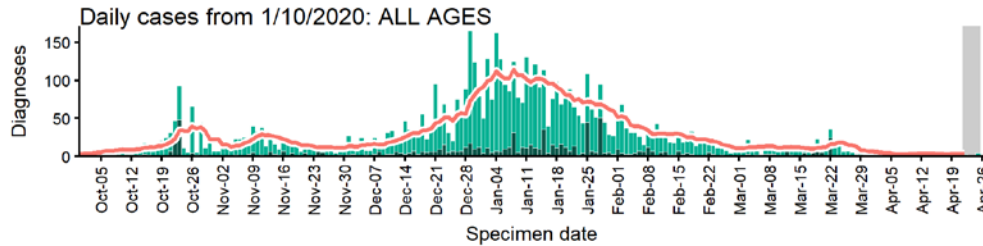


The red dashed line on the heatmaps show the last four days where data may be incomplete due to reporting delays and removal of LFDs with accompanying negative PCR results. Please consider this data provisional.

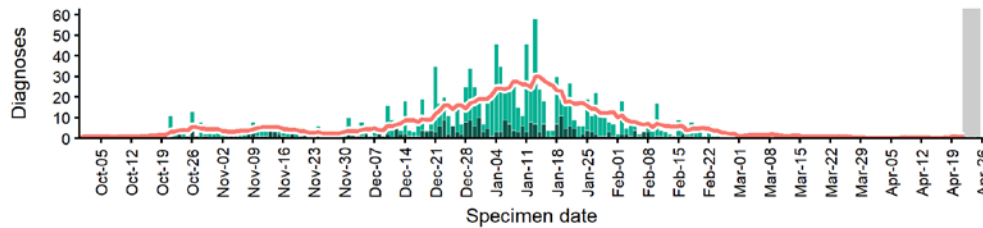
Data from SGSS. Produced by Outbreak Surveillance Team, PHE

Breckland case numbers, testing numbers and positivity, 1 Oct to 25 Apr 2021

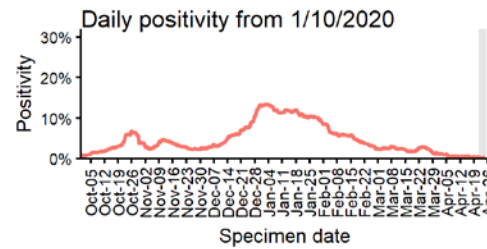
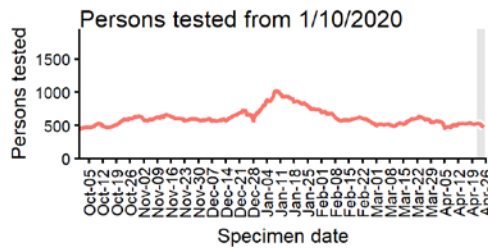
BRECKLAND
Cases and persons tested up to April 25 2021



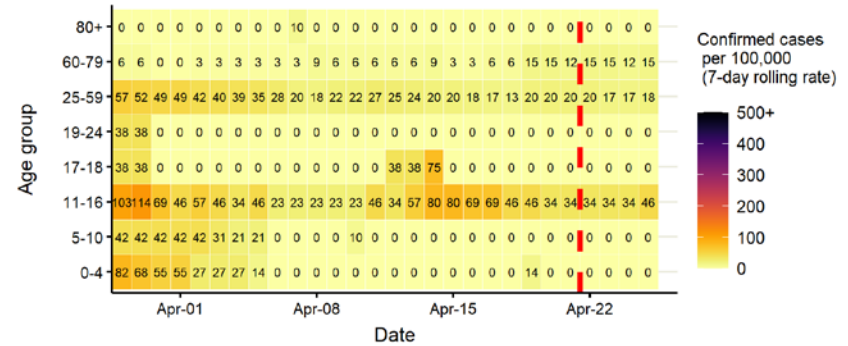
Daily cases from 1/10/2020: 60+ YEARS ONLY **NOTE: different y-axis scale**



4 days with incomplete data Pillar 1 Pillar 2 Total 7 day moving average (P1 + P2)



Age-stratified case rate heatmap for Breckland: 29 Mar to 25 Apr 2021

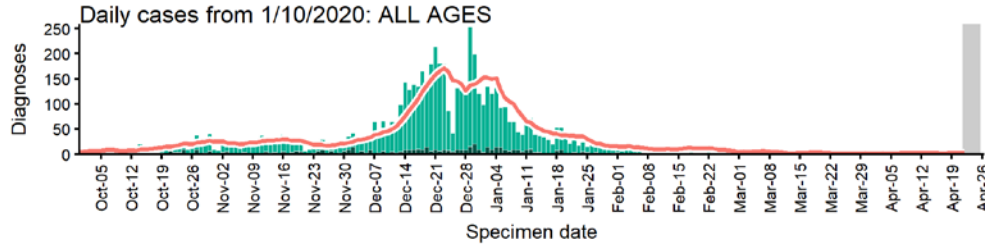


The red dashed line on the heatmaps show the last four days where data may be incomplete due to reporting delays and removal of LFDs with accompanying negative PCR results. Please consider this data provisional.

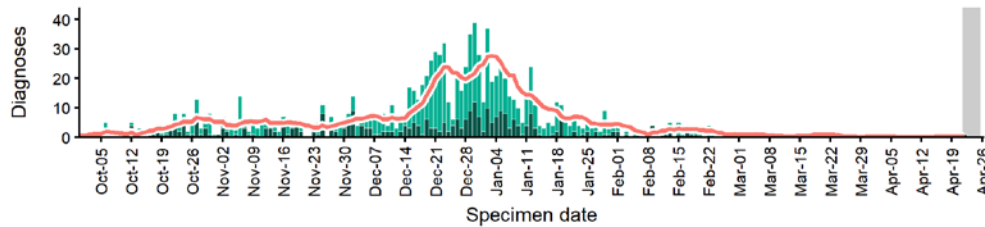
Data from SGSS. Produced by Outbreak Surveillance Team, PHE

Brentwood case numbers, testing numbers and positivity, 1 Oct to 25 Apr 2021

BRENTWOOD
Cases and persons tested up to April 25 2021

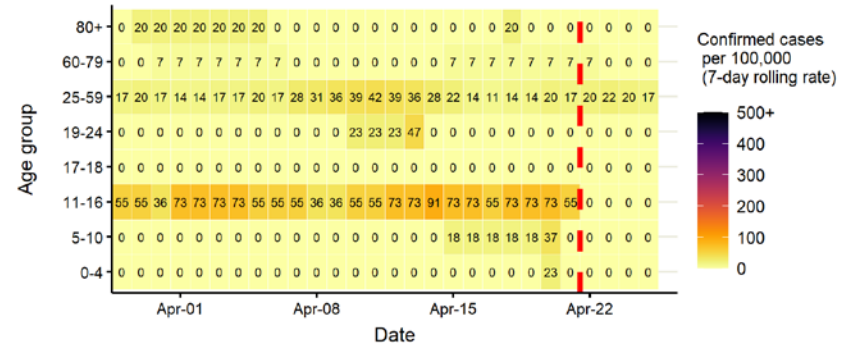


Daily cases from 1/10/2020: 60+ YEARS ONLY **NOTE: different y-axis scale**



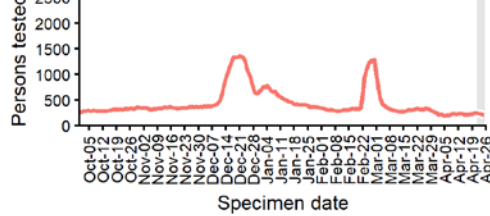
4 days with incomplete data Pillar 1 Pillar 2 Total 7 day moving average (P1 + P2)

Age-stratified case rate heatmap for Brentwood: 29 Mar to 25 Apr 2021

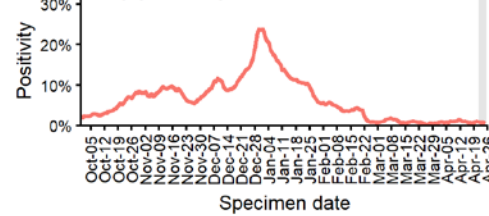


The red dashed line on the heatmaps show the last four days where data may be incomplete due to reporting delays and removal of LFDs with accompanying negative PCR results. Please consider this data provisional.

Persons tested from 1/10/2020



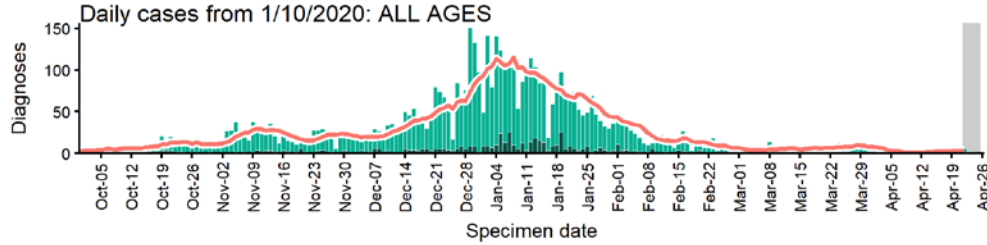
Daily positivity from 1/10/2020



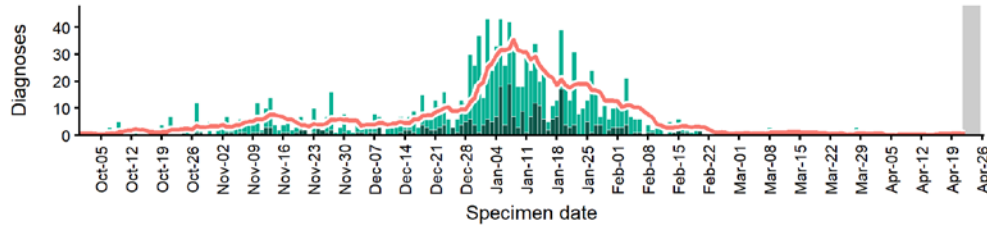
Data from SGSS. Produced by Outbreak Surveillance Team, PHE

Broadland case numbers, testing numbers and positivity, 1 Oct to 25 Apr 2021

BROADLAND
Cases and persons tested up to April 25 2021

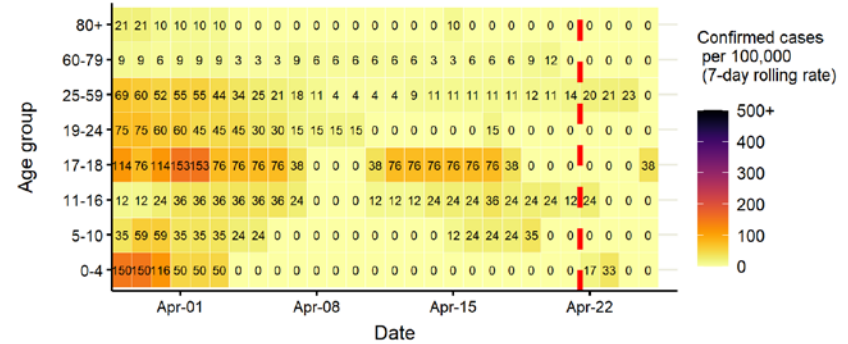


Daily cases from 1/10/2020: 60+ YEARS ONLY **NOTE: different y-axis scale**

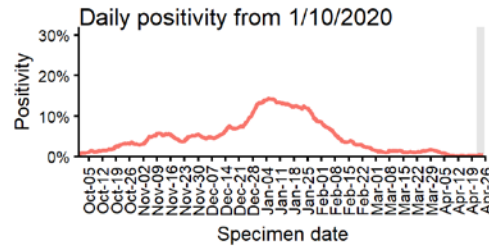
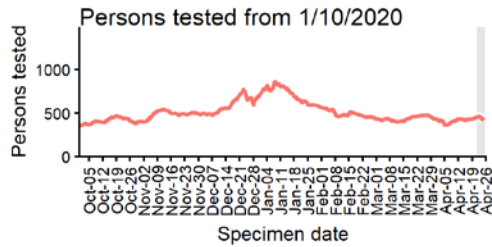


4 days with incomplete data Pillar 1 Pillar 2 Total 7 day moving average (P1 + P2)

Age-stratified case rate heatmap for Broadland: 29 Mar to 25 Apr 2021



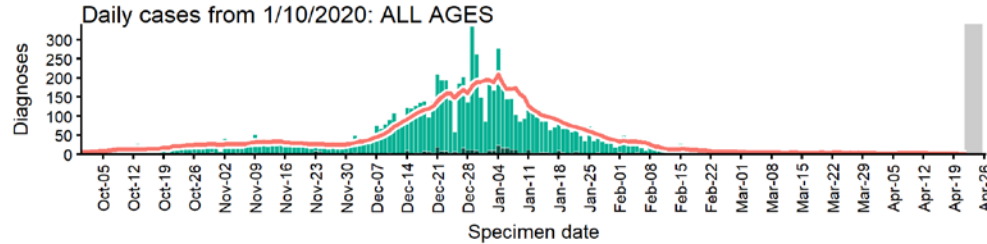
The red dashed line on the heatmaps show the last four days where data may be incomplete due to reporting delays and removal of LFDs with accompanying negative PCR results. Please consider this data provisional.



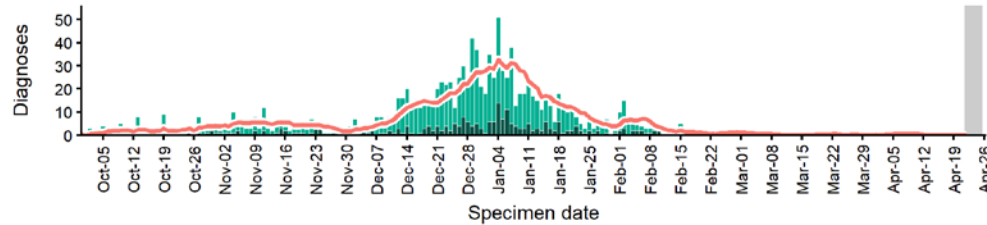
Data from SGSS. Produced by Outbreak Surveillance Team, PHE

Broxbourne case numbers, testing numbers and positivity, 1 Oct to 25 Apr 2021

BROXBOURNE Cases and persons tested up to April 25 2021

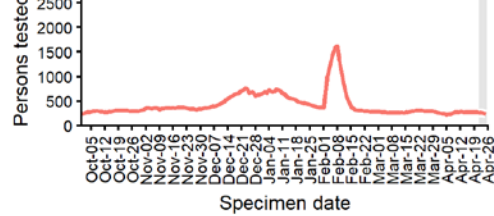


Daily cases from 1/10/2020: 60+ YEARS ONLY **NOTE: different y-axis scale**

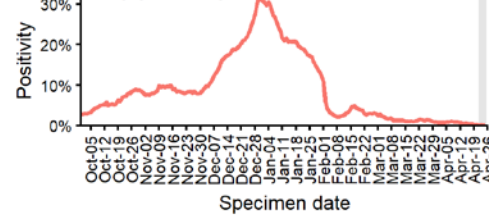


4 days with incomplete data Pillar 1 Pillar 2 Total 7 day moving average (P1 + P2)

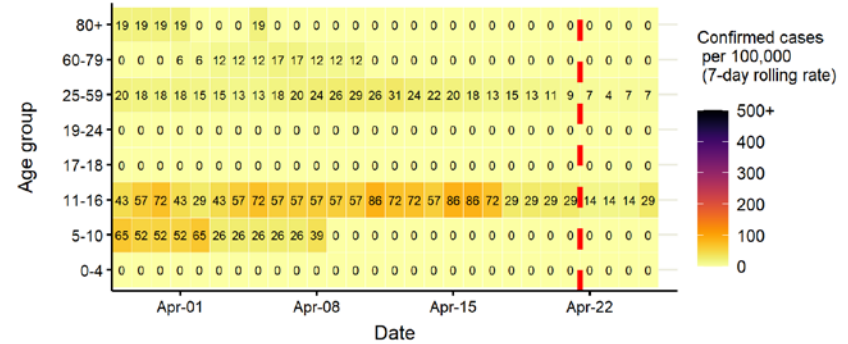
Persons tested from 1/10/2020



Daily positivity from 1/10/2020



Age-stratified case rate heatmap for Broxbourne: 29 Mar to 25 Apr 2021

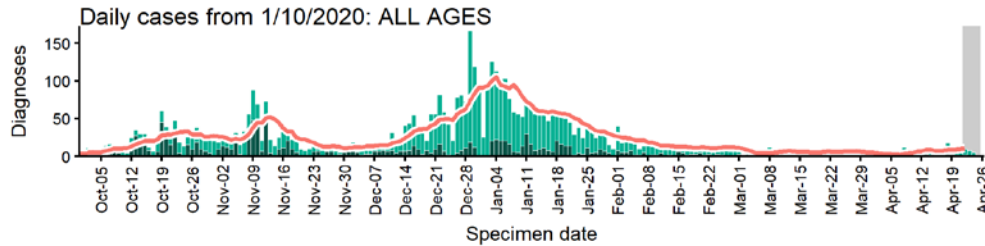


The red dashed line on the heatmaps show the last four days where data may be incomplete due to reporting delays and removal of LFDs with accompanying negative PCR results. Please consider this data provisional.

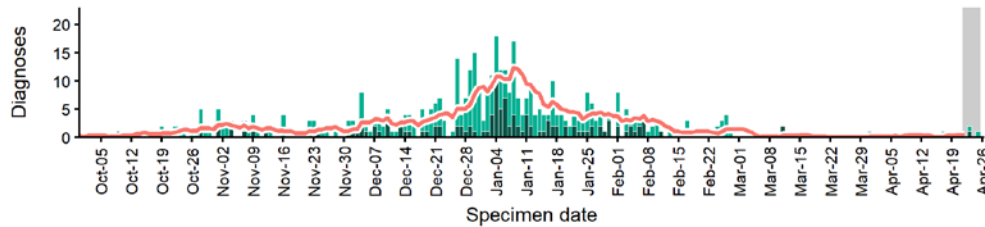
Data from SGSS. Produced by Outbreak Surveillance Team, PHE

Cambridge case numbers, testing numbers and positivity, 1 Oct to 25 Apr 2021

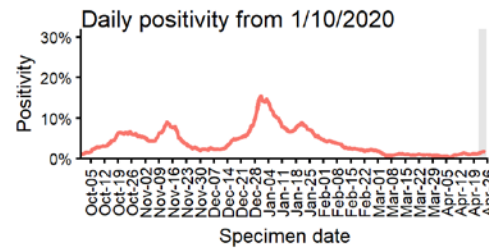
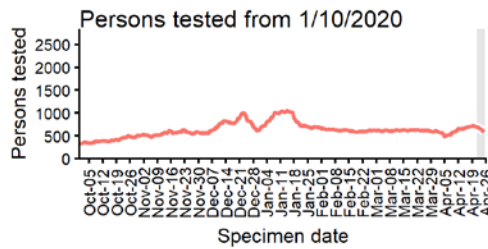
CAMBRIDGE
Cases and persons tested up to April 25 2021



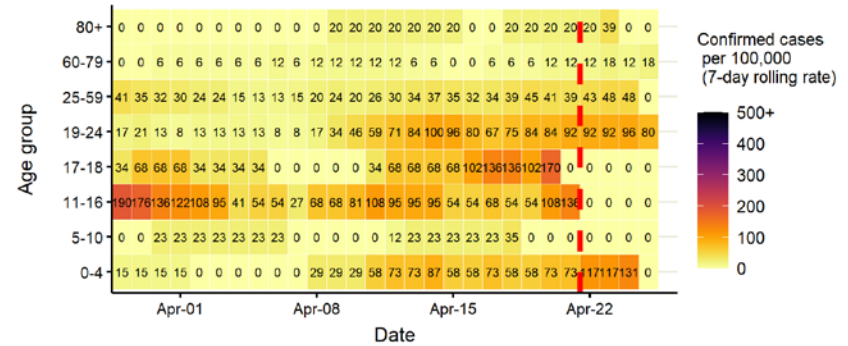
Daily cases from 1/10/2020: 60+ YEARS ONLY **NOTE: different y-axis scale**



4 days with incomplete data
 Pillar 1
 Pillar 2
 Total 7 day moving average (P1 + P2)



Age-stratified case rate heatmap for Cambridge: 29 Mar to 25 Apr 2021

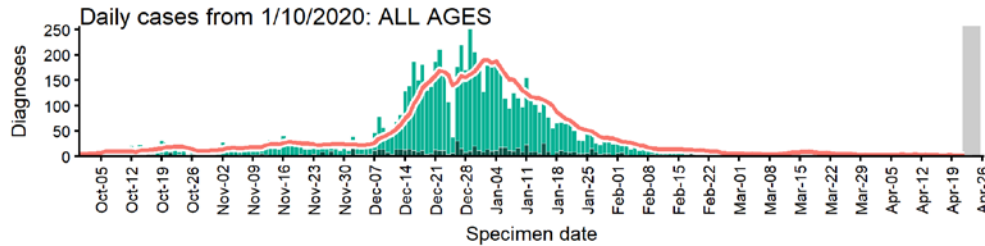


The red dashed line on the heatmaps show the last four days where data may be incomplete due to reporting delays and removal of LFDs with accompanying negative PCR results. Please consider this data provisional.

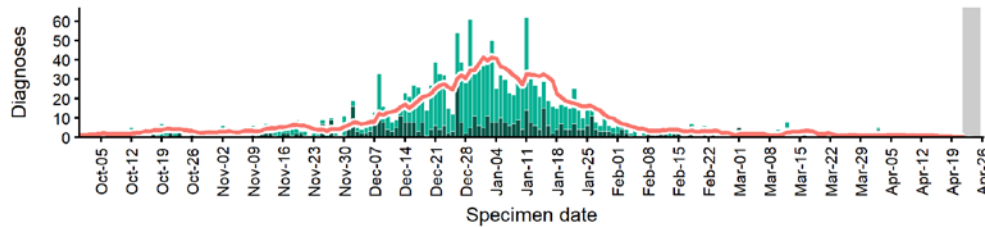
Data from SGSS. Produced by Outbreak Surveillance Team, PHE

Castle Point case numbers, testing numbers and positivity, 1 Oct to 25 Apr 2021

CASTLE POINT
Cases and persons tested up to April 25 2021

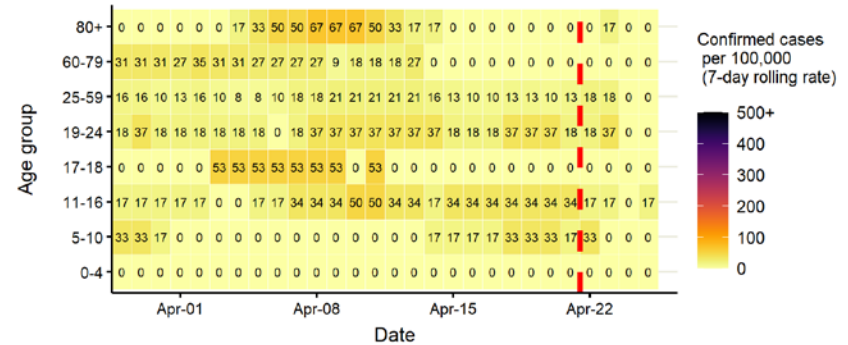


Daily cases from 1/10/2020: 60+ YEARS ONLY **NOTE: different y-axis scale**



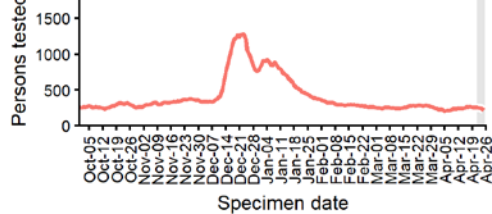
4 days with incomplete data Pillar 1 Pillar 2 Total 7 day moving average (P1 + P2)

Age-stratified case rate heatmap for Castle Point: 29 Mar to 25 Apr 2021

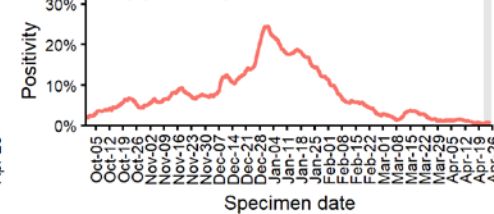


The red dashed line on the heatmaps show the last four days where data may be incomplete due to reporting delays and removal of LFDs with accompanying negative PCR results. Please consider this data provisional.

Persons tested from 1/10/2020



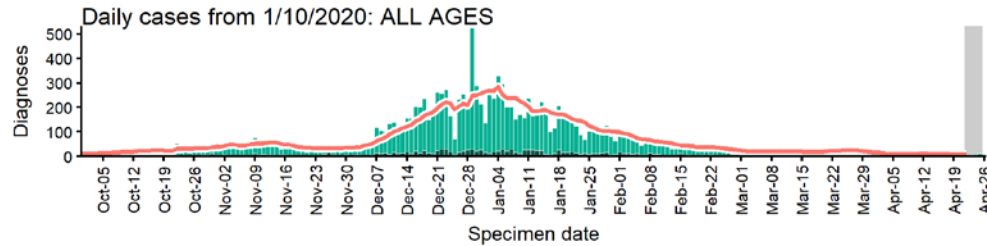
Daily positivity from 1/10/2020



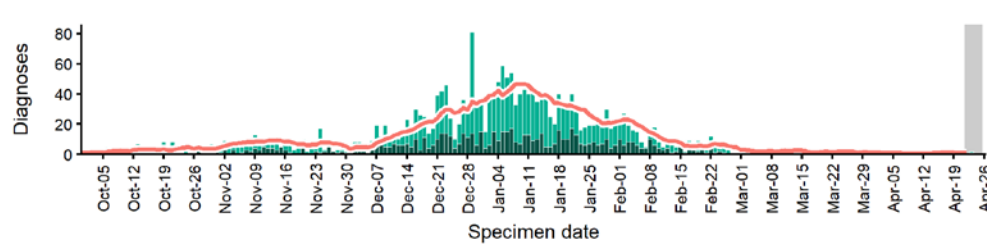
Data from SGSS. Produced by Outbreak Surveillance Team, PHE

Central Bedfordshire case numbers, testing numbers and positivity, 1 Oct to 25 Apr 2021

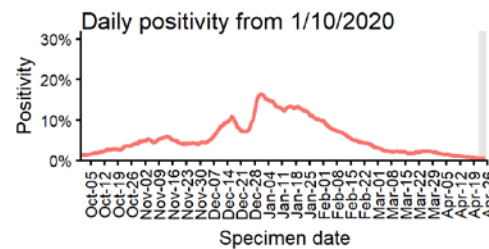
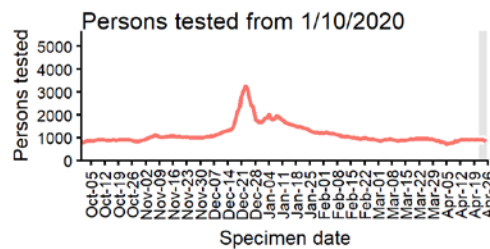
**CENTRAL BEDFORDSHIRE
Cases and persons tested up to April 25 2021**



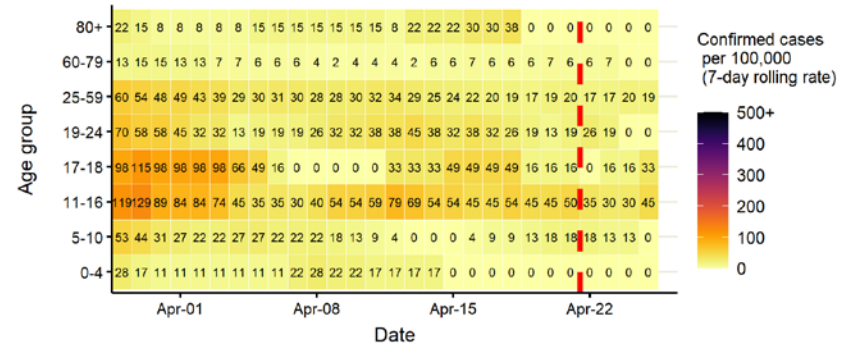
Daily cases from 1/10/2020: 60+ YEARS ONLY **NOTE: different y-axis scale**



4 days with incomplete data Pillar 1 Pillar 2 Total 7 day moving average (P1 + P2)



Age-stratified case rate heatmap for Central Bedfordshire: 29 Mar to 25 Apr 2021

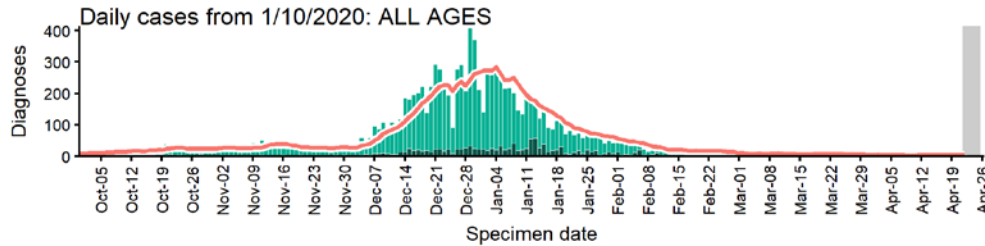


The red dashed line on the heatmaps show the last four days where data may be incomplete due to reporting delays and removal of LFDs with accompanying negative PCR results. Please consider this data provisional.

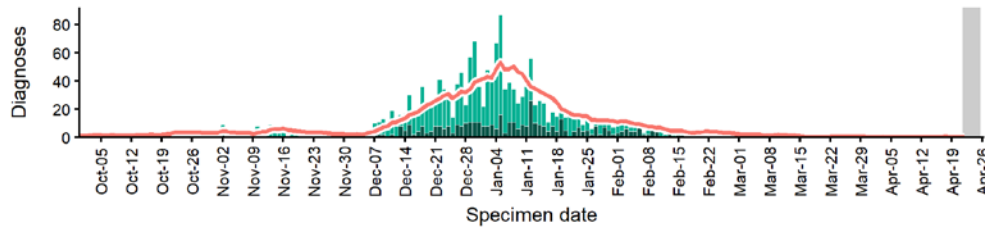
Data from SGSS. Produced by Outbreak Surveillance Team, PHE

Chelmsford case numbers, testing numbers and positivity, 1 Oct to 25 Apr 2021

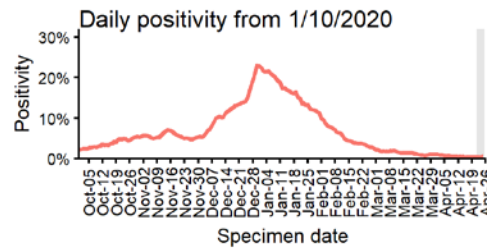
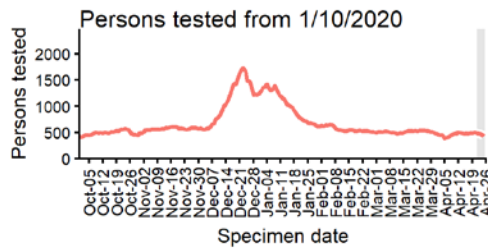
CHELMSFORD Cases and persons tested up to April 25 2021



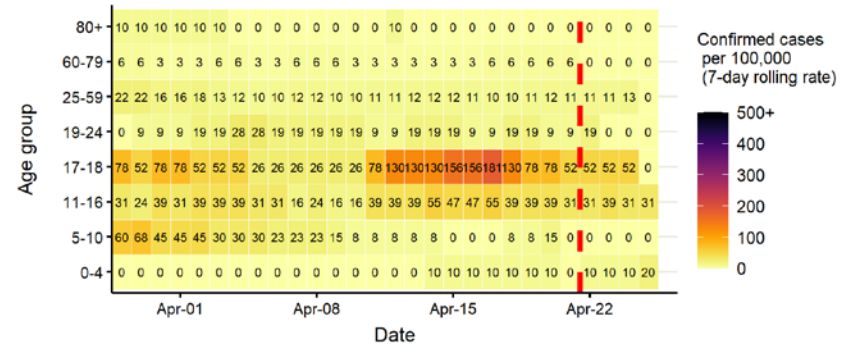
Daily cases from 1/10/2020: 60+ YEARS ONLY **NOTE: different y-axis scale**



4 days with incomplete data
 Pillar 1
 Pillar 2
 Total 7 day moving average (P1 + P2)



Age-stratified case rate heatmap for Chelmsford: 29 Mar to 25 Apr 2021

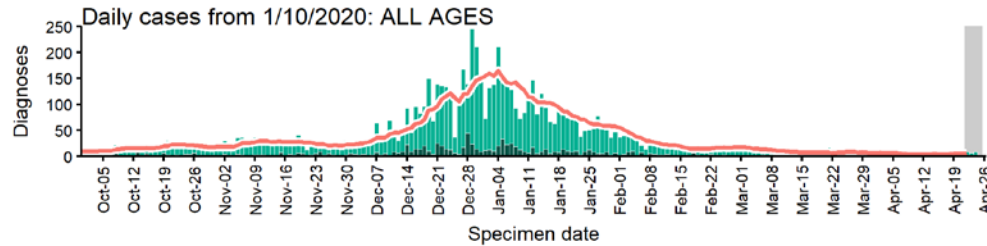


The red dashed line on the heatmaps show the last four days where data may be incomplete due to reporting delays and removal of LFDs with accompanying negative PCR results. Please consider this data provisional.

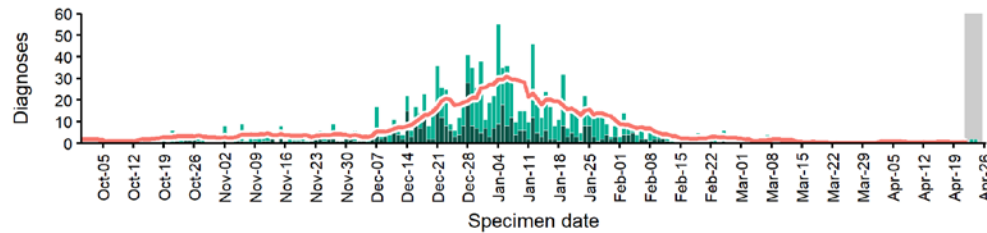
Data from SGSS. Produced by Outbreak Surveillance Team, PHE

Dacorum case numbers, testing numbers and positivity, 1 Oct to 25 Apr 2021

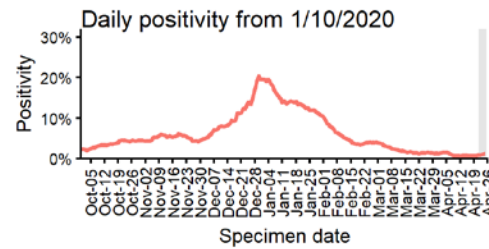
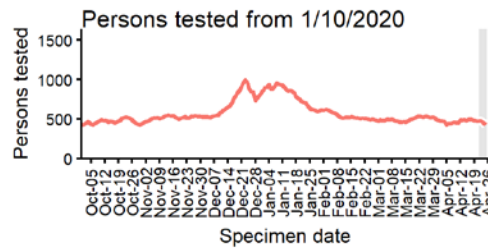
DACORUM Cases and persons tested up to April 25 2021



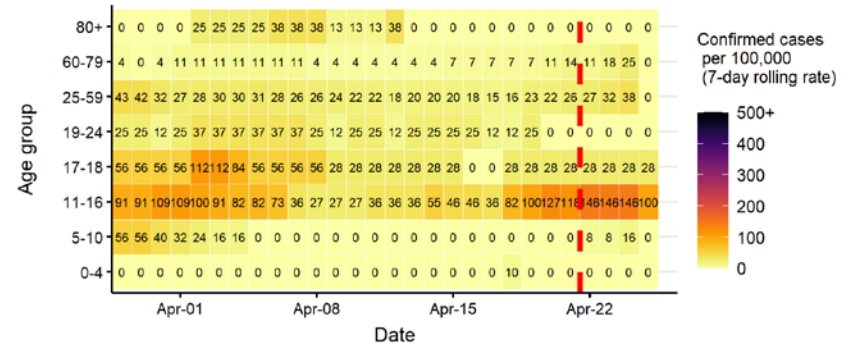
Daily cases from 1/10/2020: 60+ YEARS ONLY **NOTE: different y-axis scale**



4 days with incomplete data Pillar 1 Pillar 2 Total 7 day moving average (P1 + P2)



Age-stratified case rate heatmap for Dacorum: 29 Mar to 25 Apr 2021

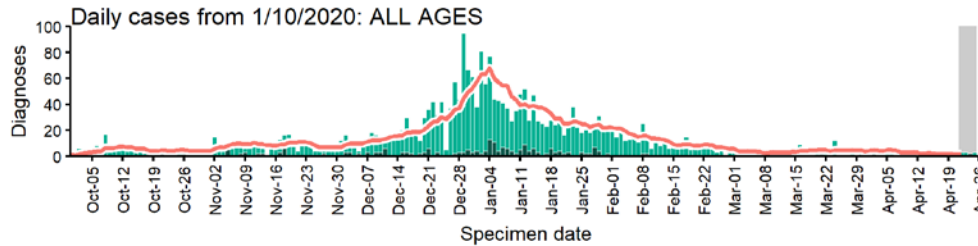


The red dashed line on the heatmaps show the last four days where data may be incomplete due to reporting delays and removal of LFDs with accompanying negative PCR results. Please consider this data provisional.

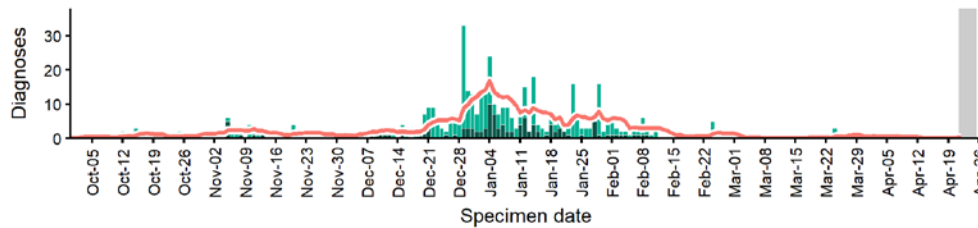
Data from SGSS. Produced by Outbreak Surveillance Team, PHE

East Cambridgeshire case numbers, testing numbers and positivity, 1 Oct to 25 Apr 2021

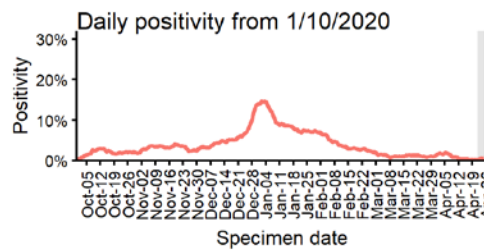
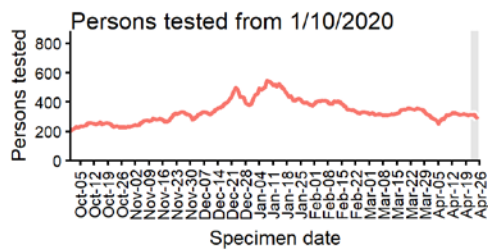
EAST CAMBRIDGESHIRE
Cases and persons tested up to April 25 2021



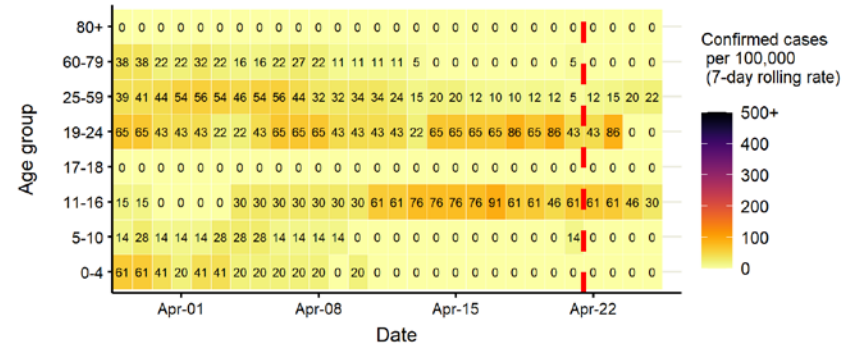
Daily cases from 1/10/2020: 60+ YEARS ONLY **NOTE: different y-axis scale**



4 days with incomplete data Pillar 1 Pillar 2 Total 7 day moving average (P1 + P2)



Age-stratified case rate heatmap for East Cambridgeshire: 29 Mar to 25 Apr 2021

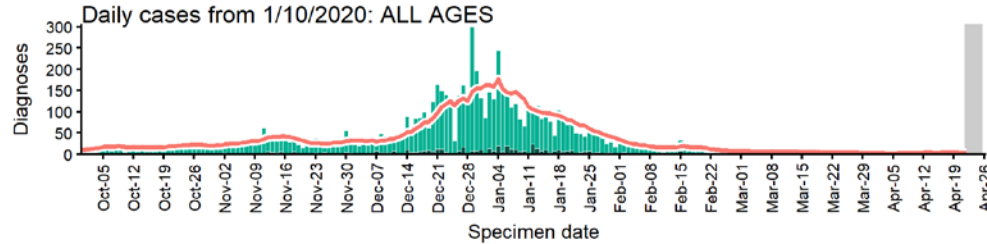


The red dashed line on the heatmaps show the last four days where data may be incomplete due to reporting delays and removal of LFDs with accompanying negative PCR results. Please consider this data provisional.

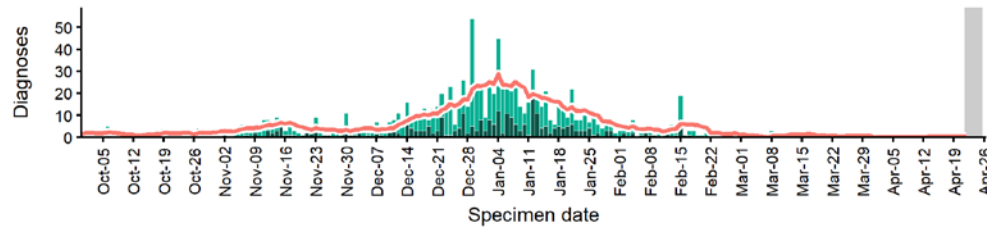
Data from SGSS. Produced by Outbreak Surveillance Team, PHE

East Hertfordshire case numbers, testing numbers and positivity, 1 Oct to 25 Apr 2021

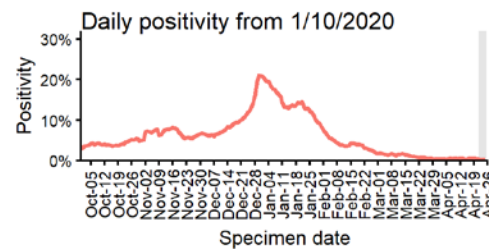
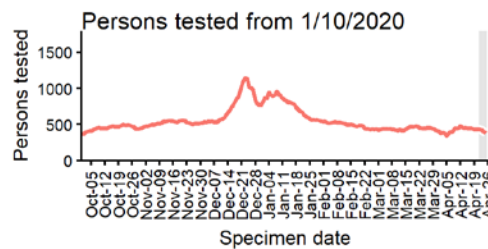
EAST HERTFORDSHIRE Cases and persons tested up to April 25 2021



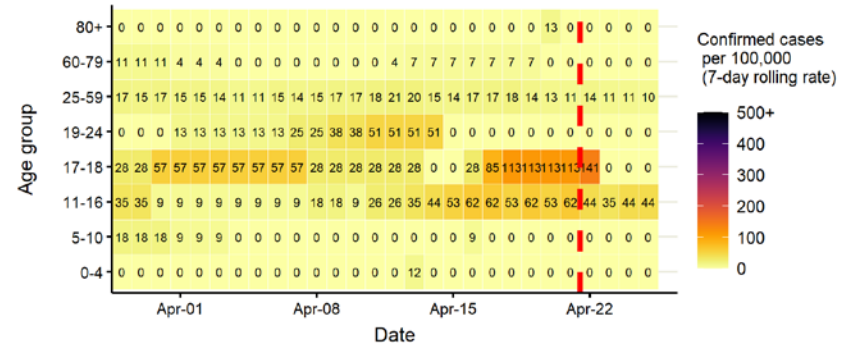
Daily cases from 1/10/2020: 60+ YEARS ONLY **NOTE: different y-axis scale**



4 days with incomplete data
 Pillar 1
 Pillar 2
 Total 7 day moving average (P1 + P2)



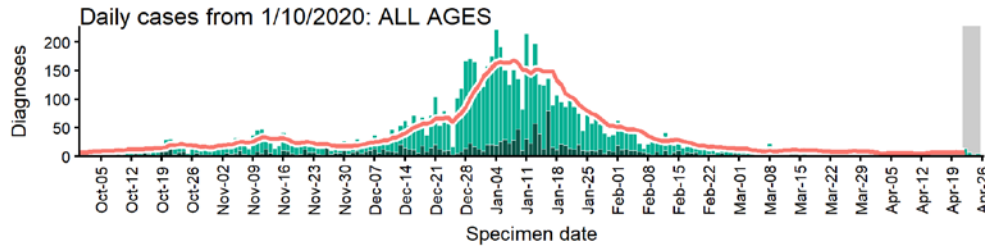
Age-stratified case rate heatmap for East Hertfordshire: 29 Mar to 25 Apr 2021



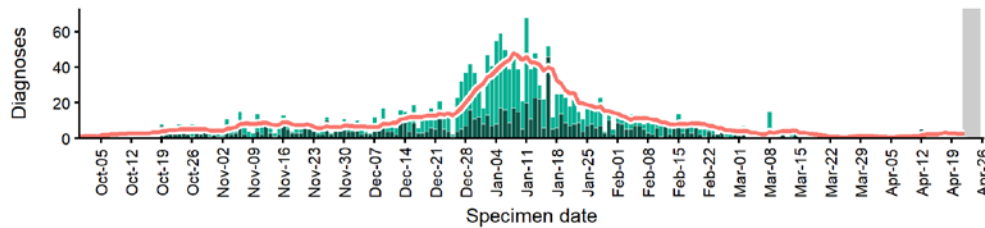
The red dashed line on the heatmaps show the last four days where data may be incomplete due to reporting delays and removal of LFDs with accompanying negative PCR results. Please consider this data provisional.

East Suffolk case numbers, testing numbers and positivity, 1 Oct to 25 Apr 2021

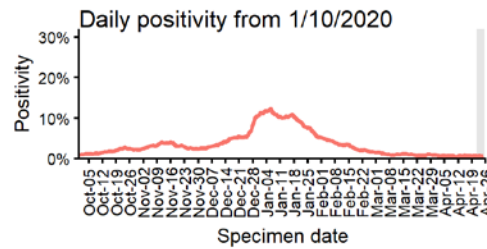
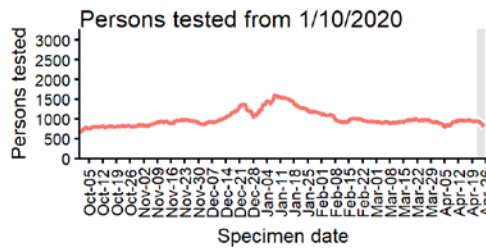
EAST SUFFOLK
Cases and persons tested up to April 25 2021



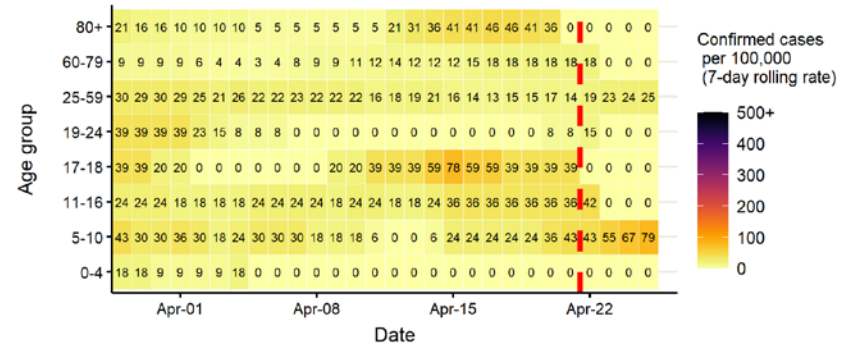
Daily cases from 1/10/2020: 60+ YEARS ONLY **NOTE: different y-axis scale**



4 days with incomplete data Pillar 1 Pillar 2 Total 7 day moving average (P1 + P2)



Age-stratified case rate heatmap for East Suffolk: 29 Mar to 25 Apr 2021

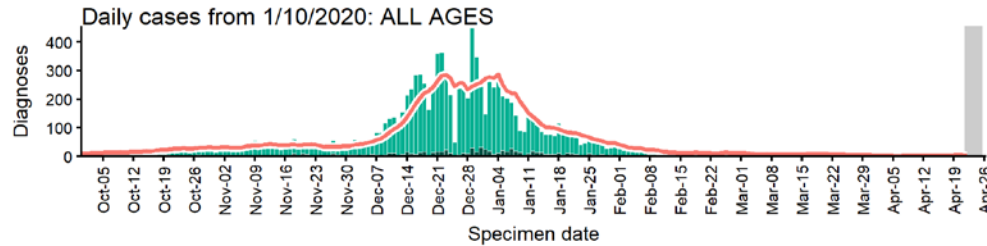


The red dashed line on the heatmaps show the last four days where data may be incomplete due to reporting delays and removal of LFDs with accompanying negative PCR results. Please consider this data provisional.

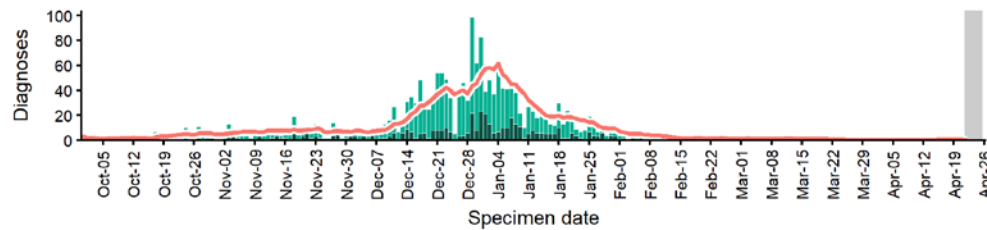
Data from SGSS. Produced by Outbreak Surveillance Team, PHE

Epping Forest case numbers, testing numbers and positivity, 1 Oct to 25 Apr 2021

EPPING FOREST Cases and persons tested up to April 25 2021

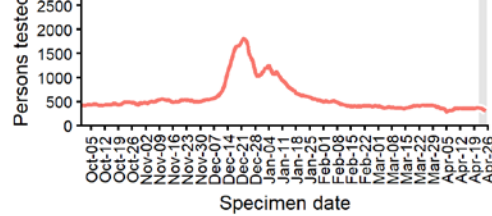


Daily cases from 1/10/2020: 60+ YEARS ONLY **NOTE: different y-axis scale**

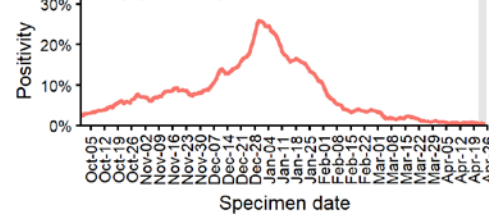


4 days with incomplete data Pillar 1 Pillar 2 Total 7 day moving average (P1 + P2)

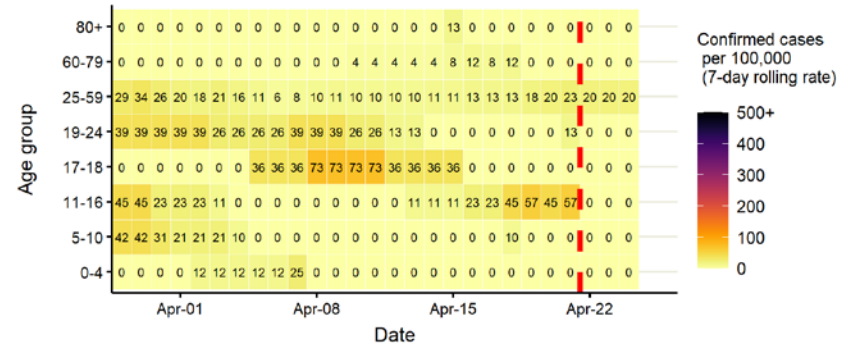
Persons tested from 1/10/2020



Daily positivity from 1/10/2020



Age-stratified case rate heatmap for Epping Forest: 29 Mar to 25 Apr 2021

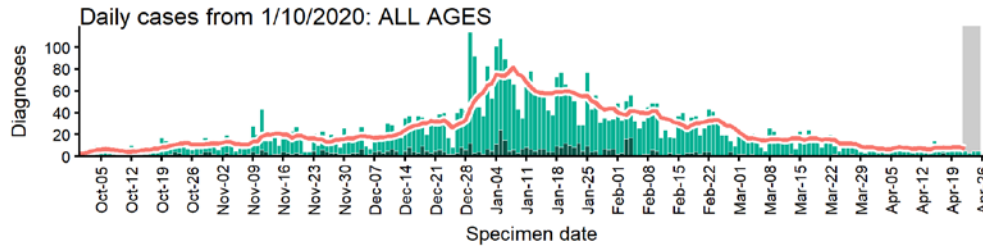


The red dashed line on the heatmaps show the last four days where data may be incomplete due to reporting delays and removal of LFDs with accompanying negative PCR results.

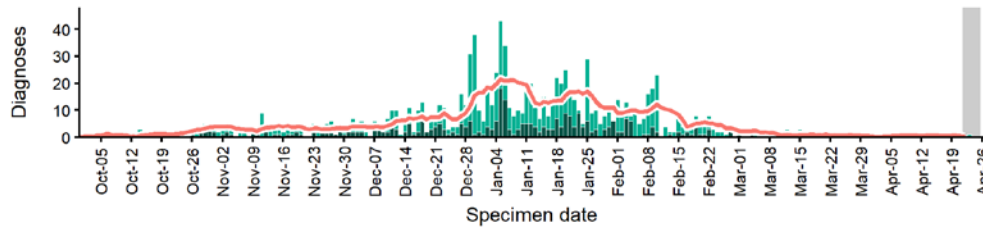
Please consider this data provisional.

Fenland case numbers, testing numbers and positivity, 1 Oct to 25 Apr 2021

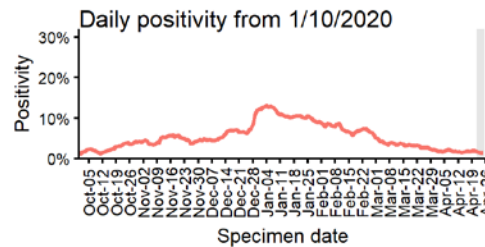
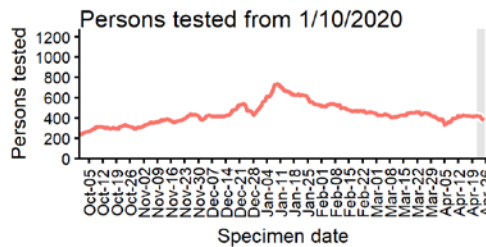
FENLAND
Cases and persons tested up to April 25 2021



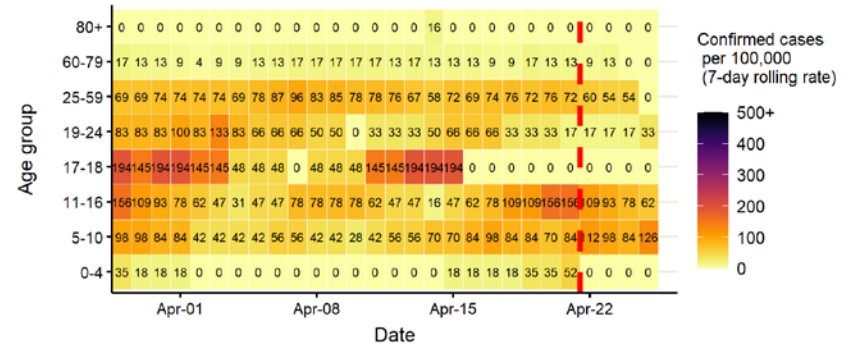
Daily cases from 1/10/2020: 60+ YEARS ONLY **NOTE: different y-axis scale**



4 days with incomplete data Pillar 1 Pillar 2 Total 7 day moving average (P1 + P2)



Age-stratified case rate heatmap for Fenland: 29 Mar to 25 Apr 2021

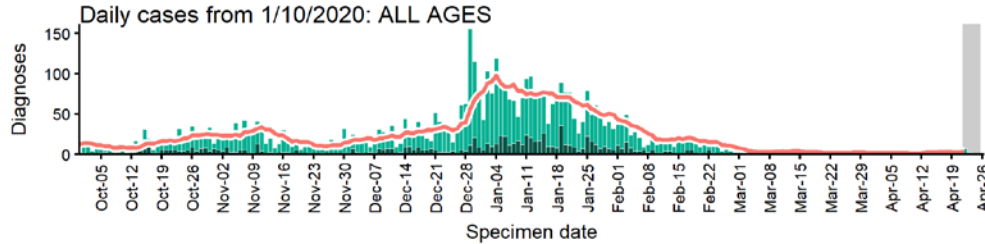


The red dashed line on the heatmaps show the last four days where data may be incomplete due to reporting delays and removal of LFDs with accompanying negative PCR results. Please consider this data provisional.

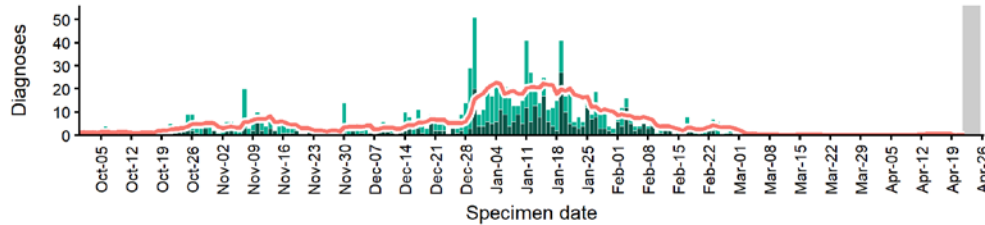
Data from SGSS. Produced by Outbreak Surveillance Team, PHE

Great Yarmouth case numbers, testing numbers and positivity, 1 Oct to 25 Apr 2021

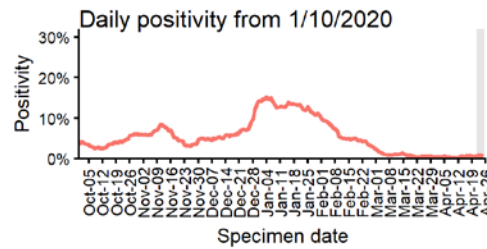
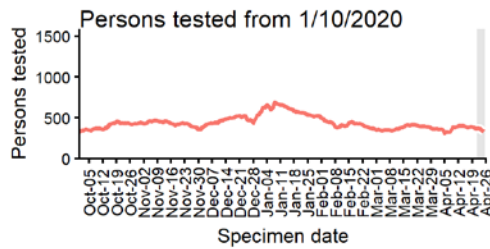
GREAT YARMOUTH
Cases and persons tested up to April 25 2021



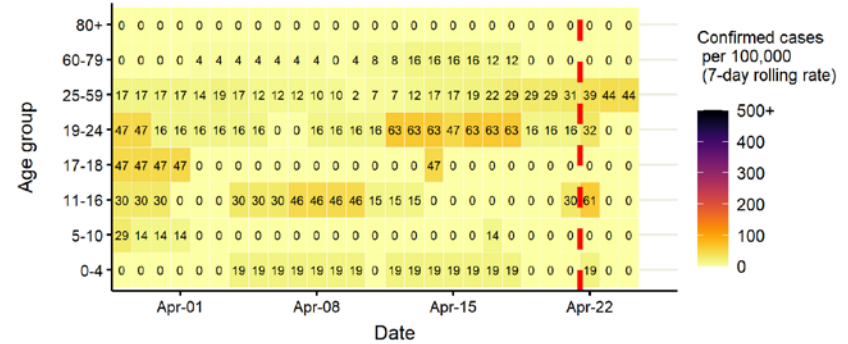
Daily cases from 1/10/2020: 60+ YEARS ONLY **NOTE: different y-axis scale**



4 days with incomplete data
 Pillar 1
 Pillar 2
 Total 7 day moving average (P1 + P2)



Age-stratified case rate heatmap for Great Yarmouth: 29 Mar to 25 Apr 2021

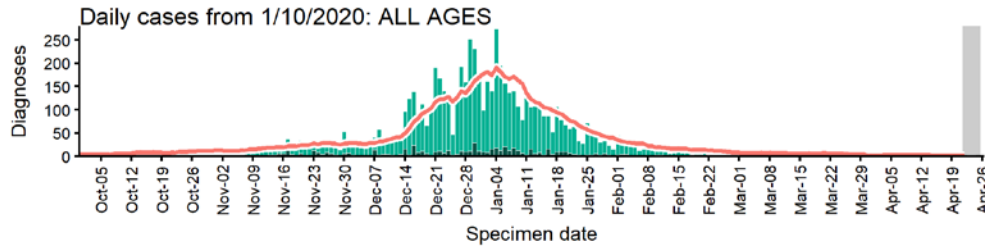


The red dashed line on the heatmaps show the last four days where data may be incomplete due to reporting delays and removal of LFDs with accompanying negative PCR results. Please consider this data provisional.

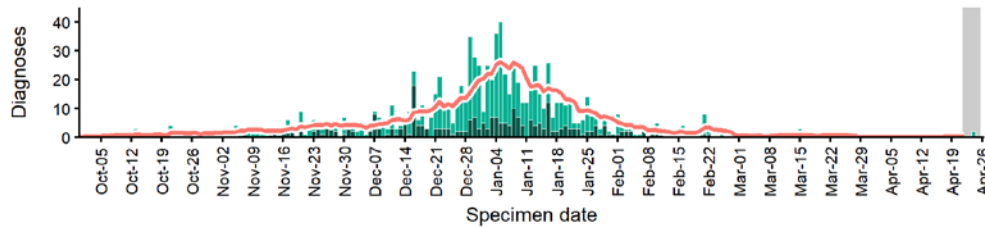
Data from SGSS. Produced by Outbreak Surveillance Team, PHE

Harlow case numbers, testing numbers and positivity, 1 Oct to 25 Apr 2021

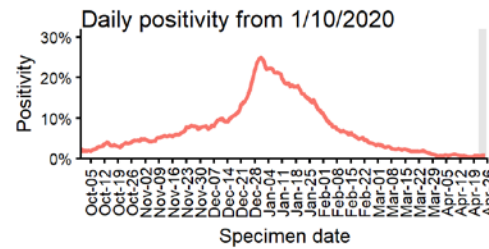
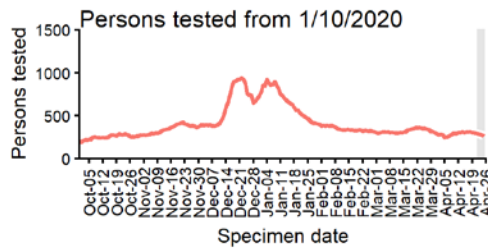
HARLOW
Cases and persons tested up to April 25 2021



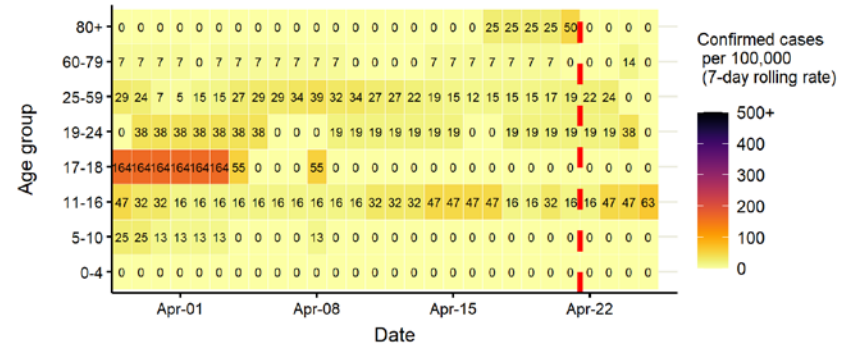
Daily cases from 1/10/2020: 60+ YEARS ONLY **NOTE: different y-axis scale**



4 days with incomplete data Pillar 1 Pillar 2 Total 7 day moving average (P1 + P2)



Age-stratified case rate heatmap for Harlow: 29 Mar to 25 Apr 2021

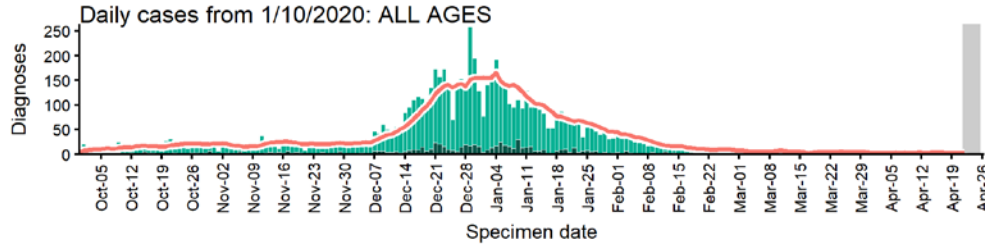


The red dashed line on the heatmaps show the last four days where data may be incomplete due to reporting delays and removal of LFDs with accompanying negative PCR results. Please consider this data provisional.

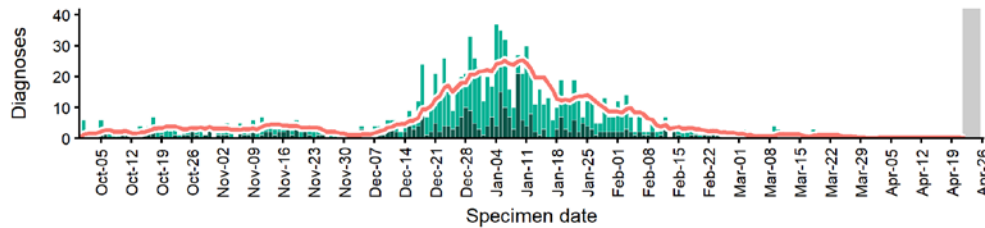
Data from SGSS. Produced by Outbreak Surveillance Team, PHE

Hertsmere case numbers, testing numbers and positivity, 1 Oct to 25 Apr 2021

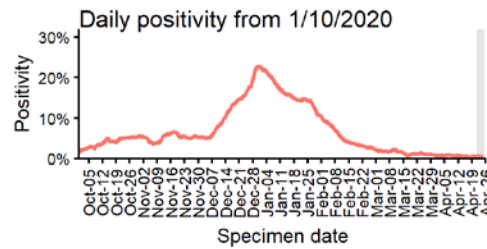
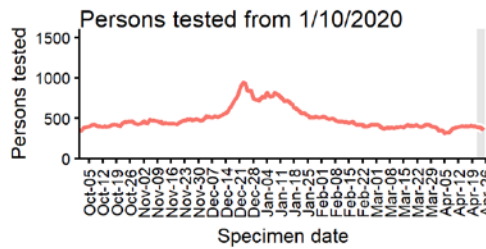
HERTSMERE
Cases and persons tested up to April 25 2021



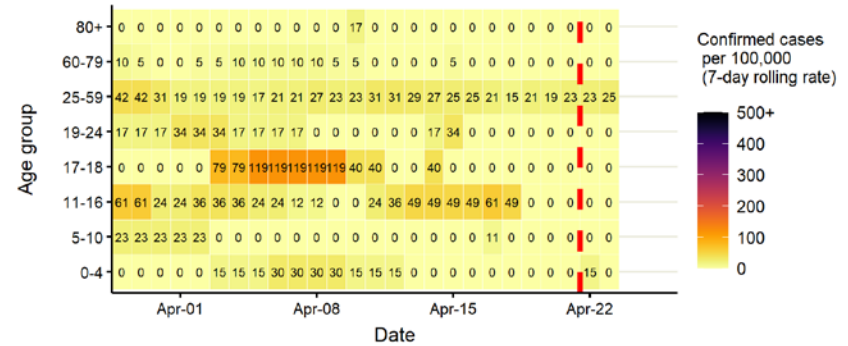
Daily cases from 1/10/2020: 60+ YEARS ONLY **NOTE: different y-axis scale**



4 days with incomplete data Pillar 1 Pillar 2 Total 7 day moving average (P1 + P2)



Age-stratified case rate heatmap for Hertsmere: 29 Mar to 25 Apr 2021

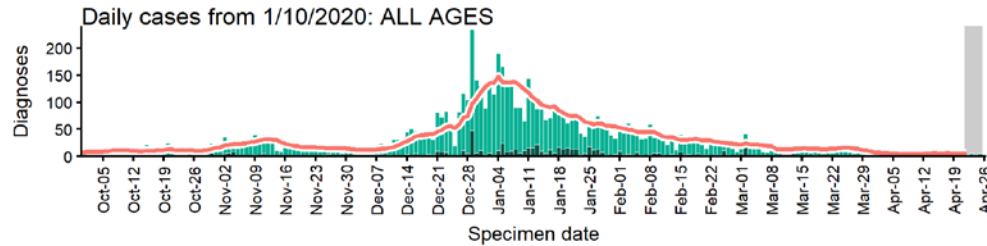


The red dashed line on the heatmaps show the last four days where data may be incomplete due to reporting delays and removal of LFDs with accompanying negative PCR results. Please consider this data provisional.

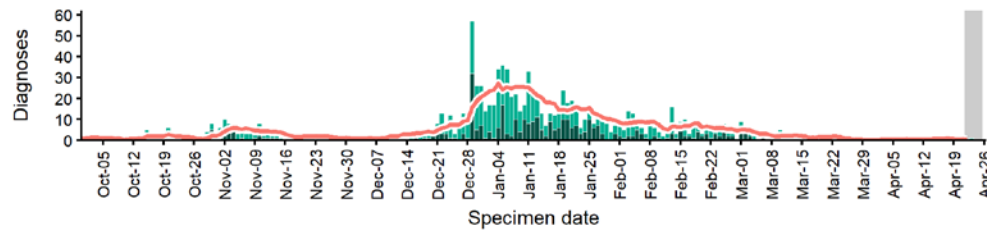
Data from SGSS. Produced by Outbreak Surveillance Team, PHE

Huntingdonshire case numbers, testing numbers and positivity, 1 Oct to 25 Apr 2021

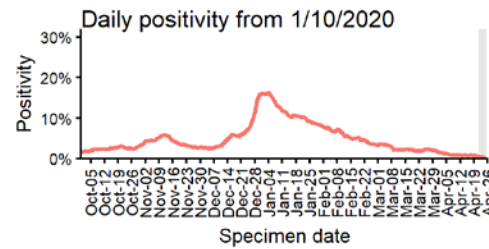
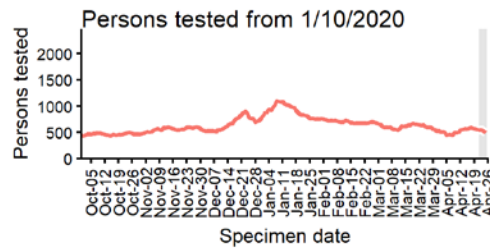
HUNTINGDONSHIRE Cases and persons tested up to April 25 2021



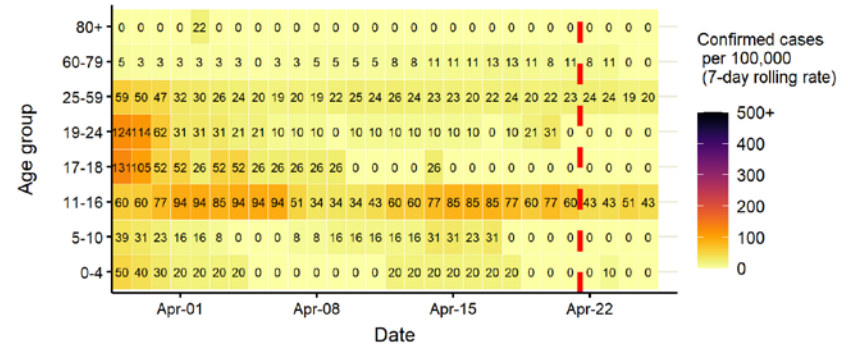
Daily cases from 1/10/2020: 60+ YEARS ONLY **NOTE: different y-axis scale**



4 days with incomplete data Pillar 1 Pillar 2 Total 7 day moving average (P1 + P2)



Age-stratified case rate heatmap for Huntingdonshire: 29 Mar to 25 Apr 2021

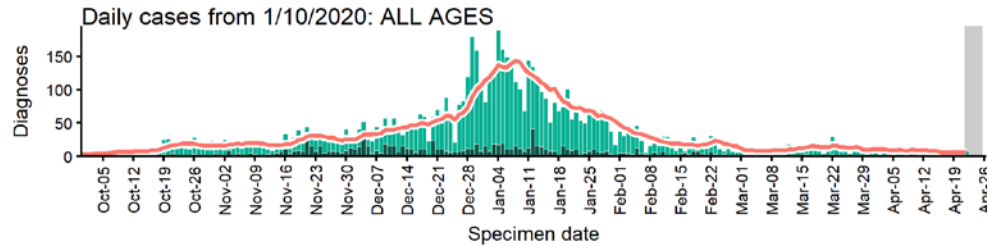


The red dashed line on the heatmaps show the last four days where data may be incomplete due to reporting delays and removal of LFDs with accompanying negative PCR results. Please consider this data provisional.

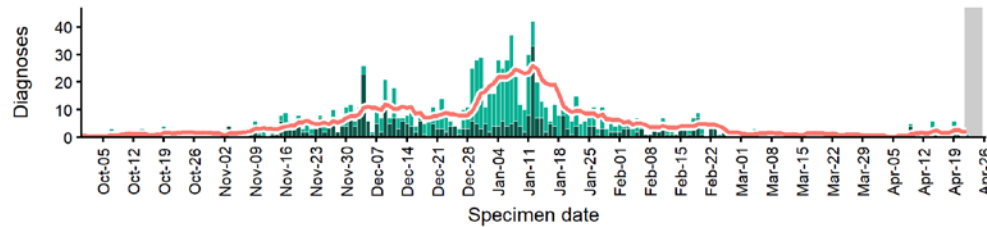
Data from SGSS. Produced by Outbreak Surveillance Team, PHE

Ipswich case numbers, testing numbers and positivity, 1 Oct to 25 Apr 2021

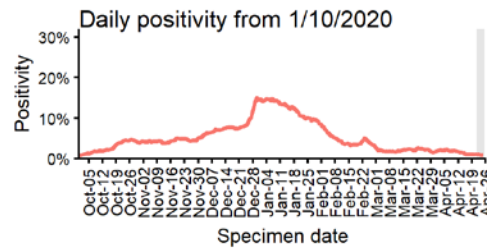
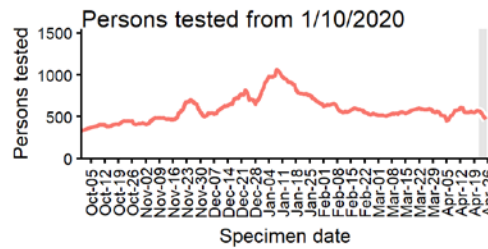
IPSWICH
Cases and persons tested up to April 25 2021



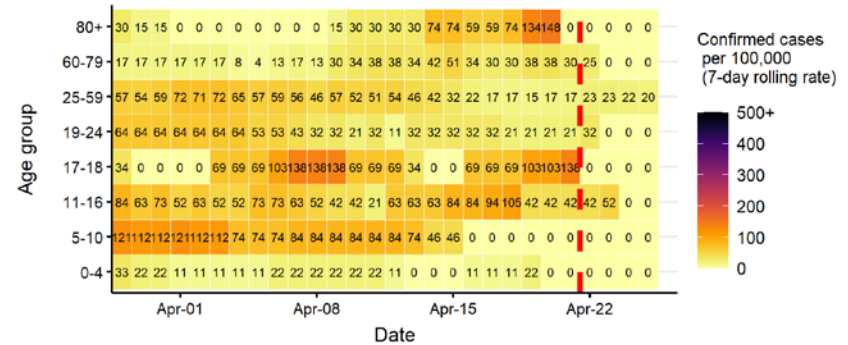
Daily cases from 1/10/2020: 60+ YEARS ONLY **NOTE: different y-axis scale**



4 days with incomplete data Pillar 1 Pillar 2 Total 7 day moving average (P1 + P2)



Age-stratified case rate heatmap for Ipswich: 29 Mar to 25 Apr 2021

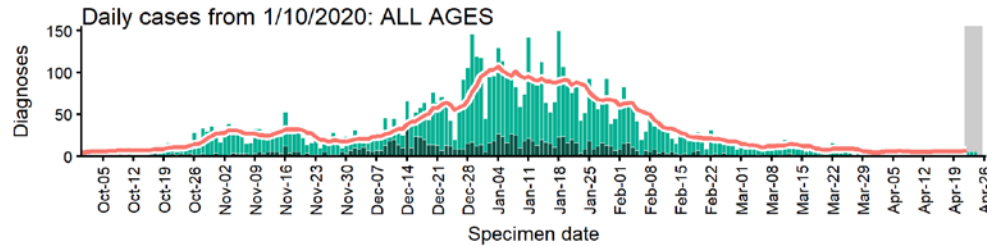


The red dashed line on the heatmaps show the last four days where data may be incomplete due to reporting delays and removal of LFDs with accompanying negative PCR results. Please consider this data provisional.

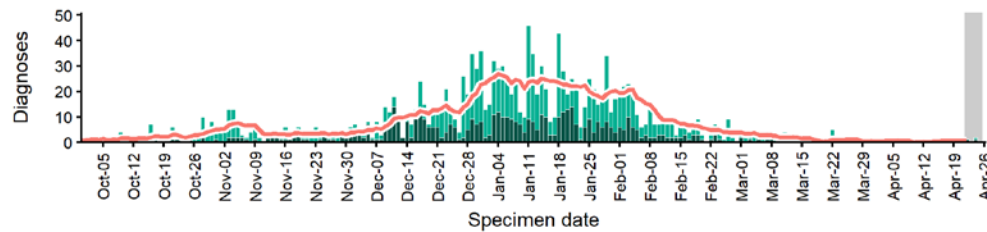
Data from SGSS. Produced by Outbreak Surveillance Team, PHE

King's Lynn and West Norfolk case numbers, testing numbers and positivity, 1 Oct to 25 Apr 2021

KING'S LYNN AND WEST NORFOLK
Cases and persons tested up to April 25 2021

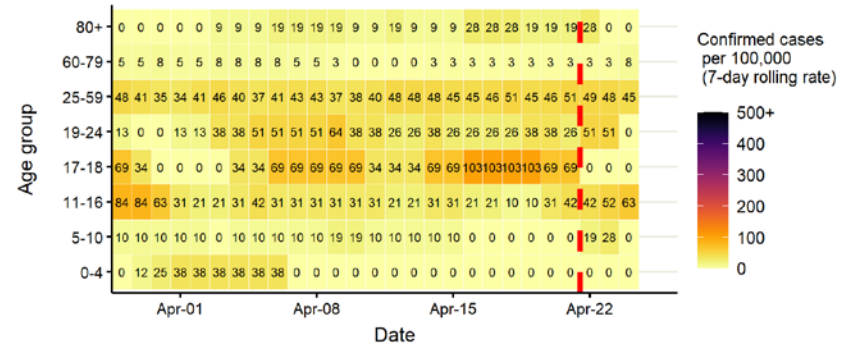


Daily cases from 1/10/2020: 60+ YEARS ONLY **NOTE: different y-axis scale**

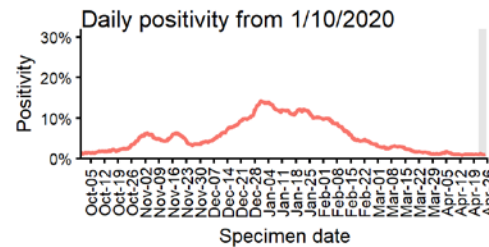
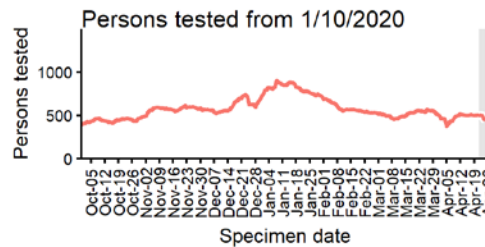


4 days with incomplete data Pillar 1 Pillar 2 Total 7 day moving average (P1 + P2)

Age-stratified case rate heatmap for King's Lynn and West Norfolk: 29 Mar to 25 Apr 2021



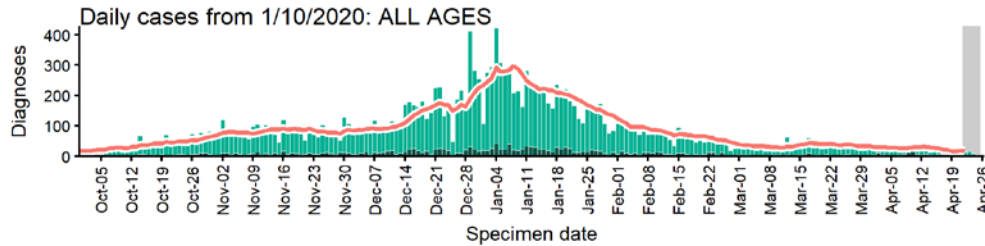
The red dashed line on the heatmaps show the last four days where data may be incomplete due to reporting delays and removal of LFDs with accompanying negative PCR results. Please consider this data provisional.



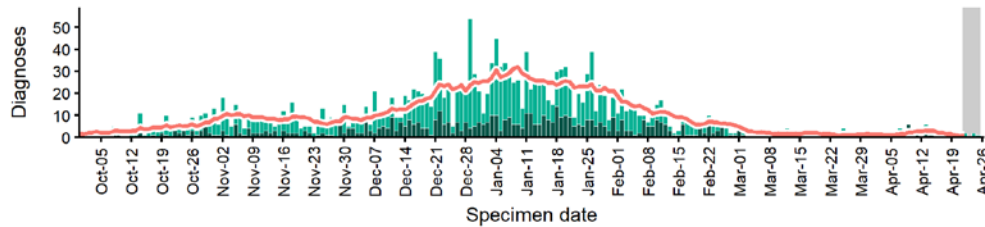
Data from SGSS. Produced by Outbreak Surveillance Team, PHE

Luton case numbers, testing numbers and positivity, 1 Oct to 25 Apr 2021

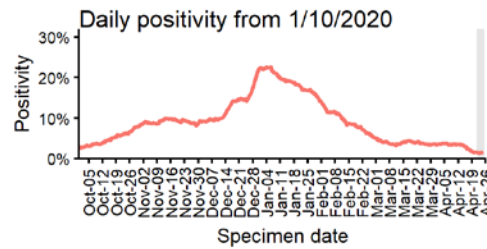
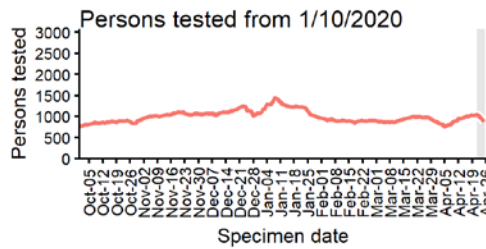
LUTON
Cases and persons tested up to April 25 2021



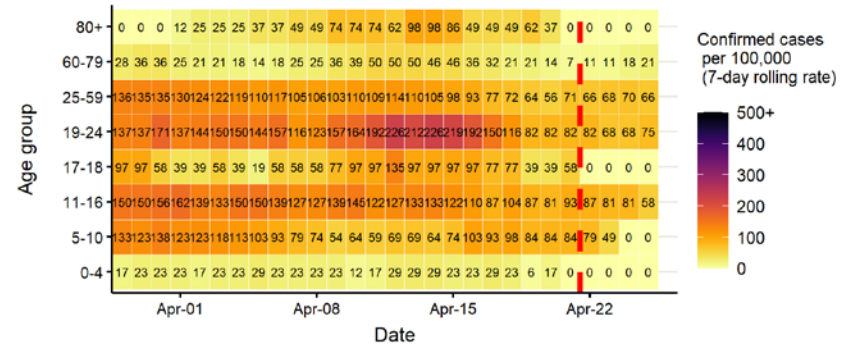
Daily cases from 1/10/2020: 60+ YEARS ONLY **NOTE: different y-axis scale**



4 days with incomplete data Pillar 1 Pillar 2 Total 7 day moving average (P1 + P2)



Age-stratified case rate heatmap for Luton: 29 Mar to 25 Apr 2021

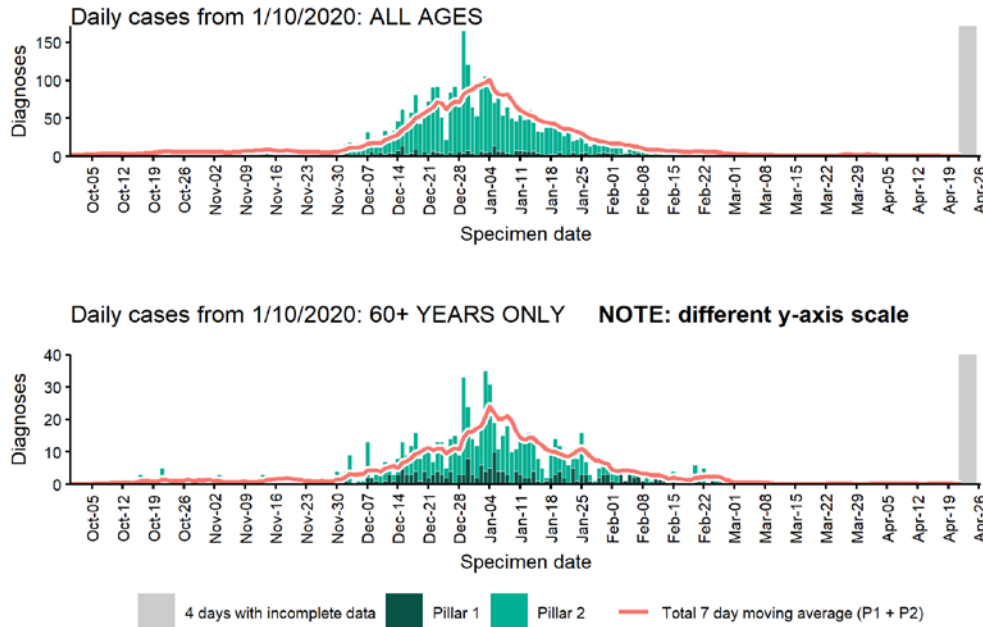


The red dashed line on the heatmaps show the last four days where data may be incomplete due to reporting delays and removal of LFDs with accompanying negative PCR results. Please consider this data provisional.

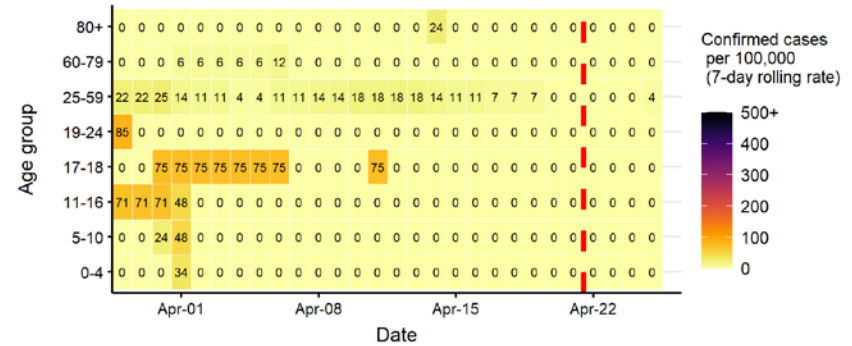
Data from SGSS. Produced by Outbreak Surveillance Team, PHE

Maldon case numbers, testing numbers and positivity, 1 Oct to 25 Apr 2021

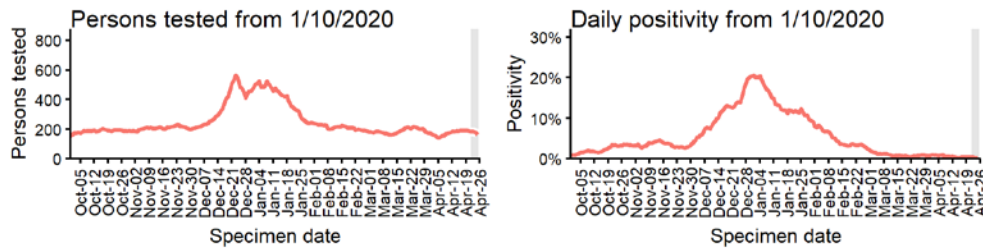
MALDON Cases and persons tested up to April 25 2021



Age-stratified case rate heatmap for Maldon: 29 Mar to 25 Apr 2021



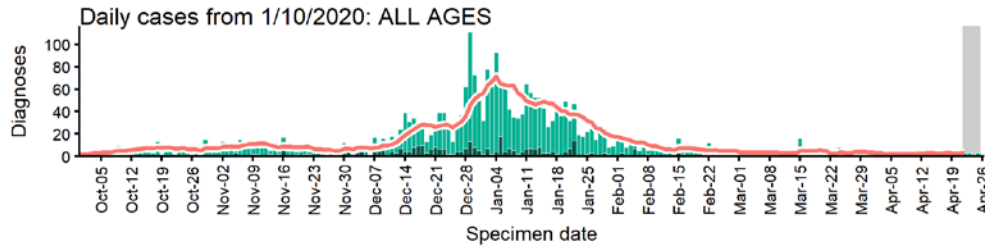
The red dashed line on the heatmaps show the last four days where data may be incomplete due to reporting delays and removal of LFDs with accompanying negative PCR results. Please consider this data provisional.



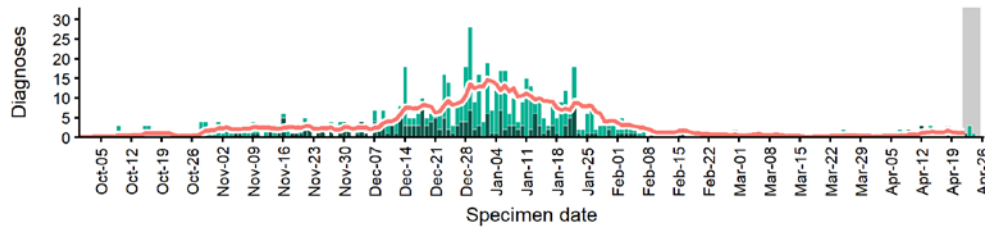
Data from SGSS. Produced by Outbreak Surveillance Team, PHE

Mid Suffolk case numbers, testing numbers and positivity, 1 Oct to 25 Apr 2021

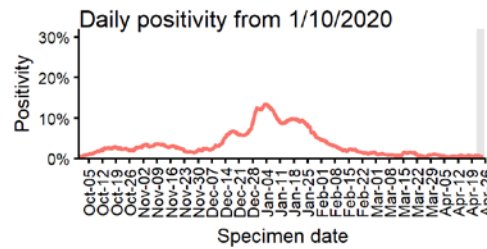
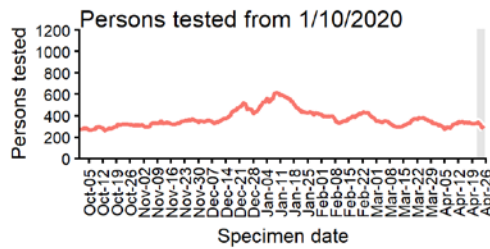
MID SUFFOLK Cases and persons tested up to April 25 2021



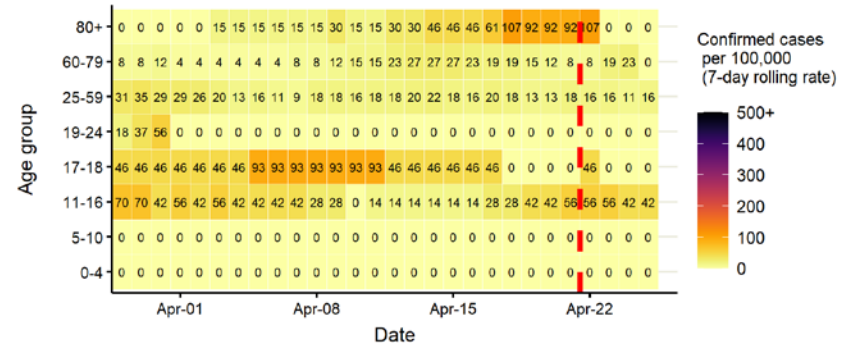
Daily cases from 1/10/2020: 60+ YEARS ONLY **NOTE: different y-axis scale**



4 days with incomplete data
 Pillar 1
 Pillar 2
 Total 7 day moving average (P1 + P2)



Age-stratified case rate heatmap for Mid Suffolk: 29 Mar to 25 Apr 2021

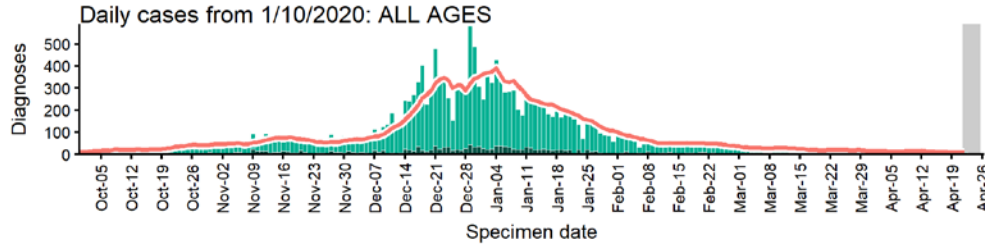


The red dashed line on the heatmaps show the last four days where data may be incomplete due to reporting delays and removal of LFDs with accompanying negative PCR results. Please consider this data provisional.

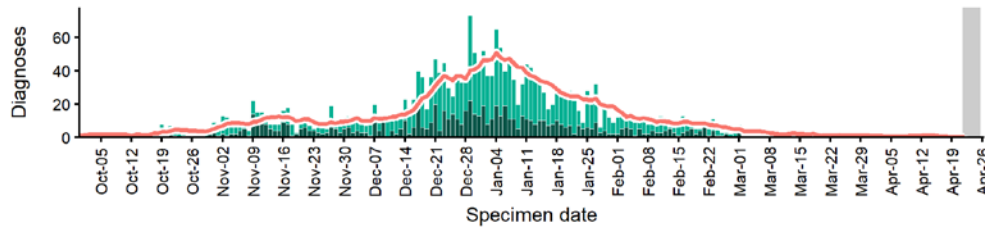
Data from SGSS. Produced by Outbreak Surveillance Team, PHE

Milton Keynes case numbers, testing numbers and positivity, 1 Oct to 25 Apr 2021

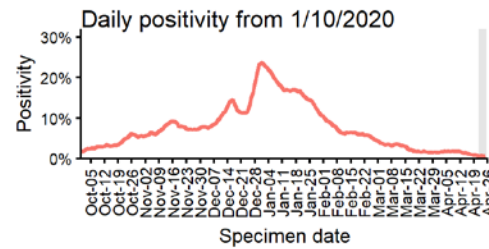
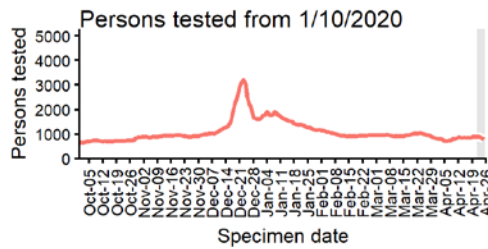
MILTON KEYNES Cases and persons tested up to April 25 2021



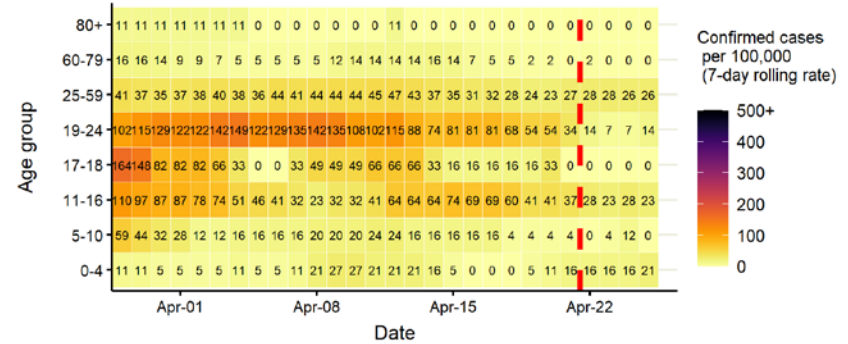
Daily cases from 1/10/2020: 60+ YEARS ONLY **NOTE: different y-axis scale**



4 days with incomplete data Pillar 1 Pillar 2 Total 7 day moving average (P1 + P2)



Age-stratified case rate heatmap for Milton Keynes: 29 Mar to 25 Apr 2021

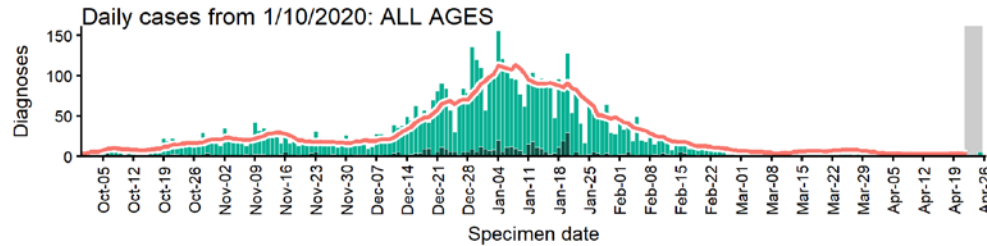


The red dashed line on the heatmaps show the last four days where data may be incomplete due to reporting delays and removal of LFDs with accompanying negative PCR results. Please consider this data provisional.

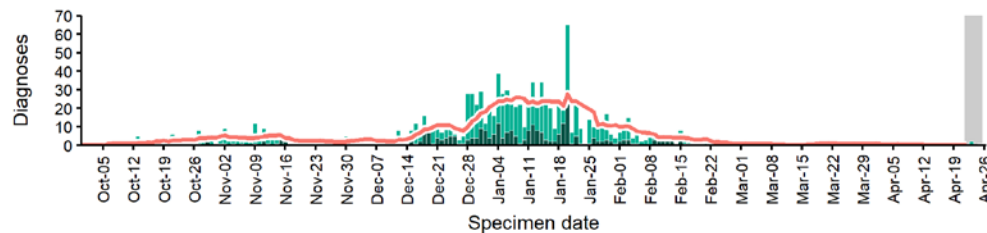
Data from SGSS. Produced by Outbreak Surveillance Team, PHE

North Hertfordshire case numbers, testing numbers and positivity, 1 Oct to 25 Apr 2021

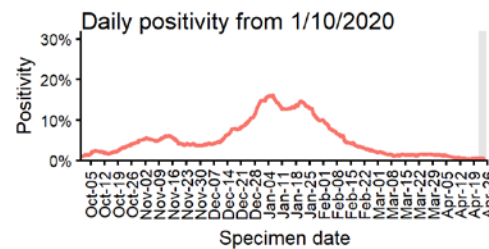
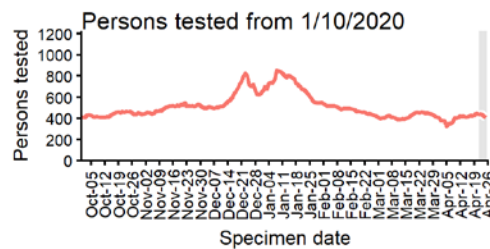
NORTH HERTFORDSHIRE
Cases and persons tested up to April 25 2021



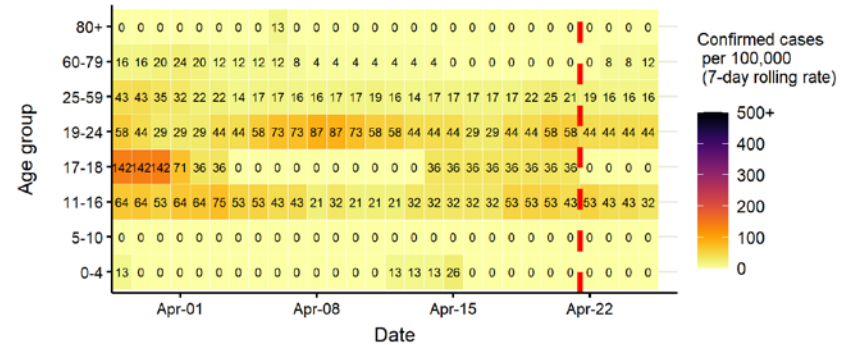
Daily cases from 1/10/2020: 60+ YEARS ONLY **NOTE: different y-axis scale**



4 days with incomplete data Pillar 1 Pillar 2 Total 7 day moving average (P1 + P2)



Age-stratified case rate heatmap for North Hertfordshire: 29 Mar to 25 Apr 2021

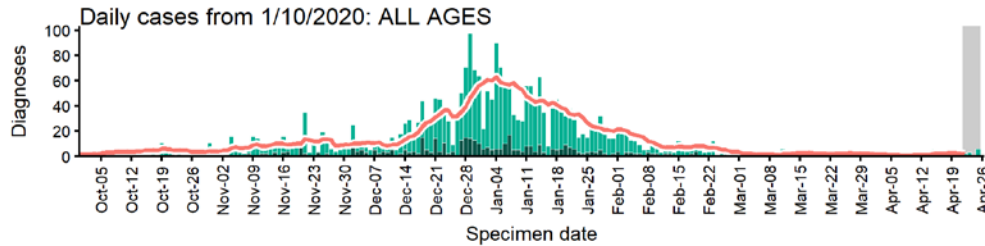


The red dashed line on the heatmaps show the last four days where data may be incomplete due to reporting delays and removal of LFDs with accompanying negative PCR results. Please consider this data provisional.

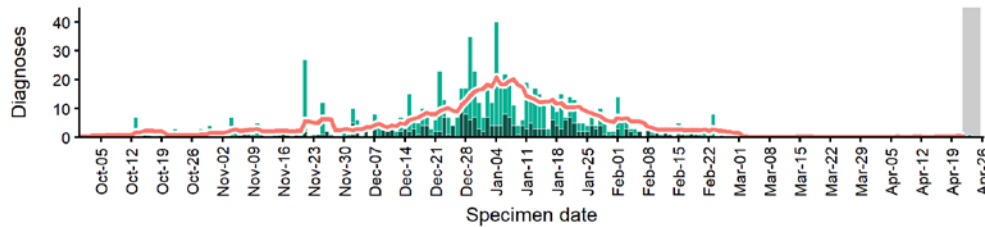
Data from SGSS. Produced by Outbreak Surveillance Team, PHE

North Norfolk case numbers, testing numbers and positivity, 1 Oct to 25 Apr 2021

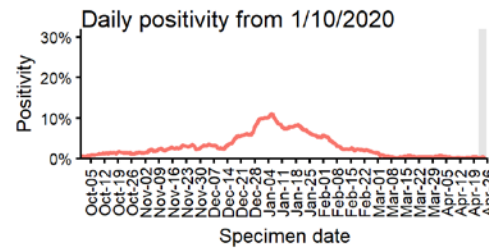
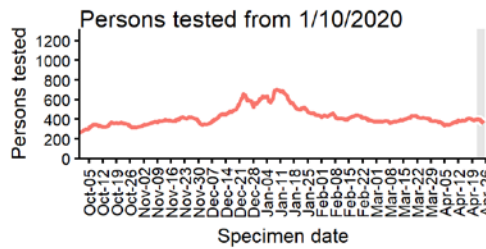
NORTH NORFOLK Cases and persons tested up to April 25 2021



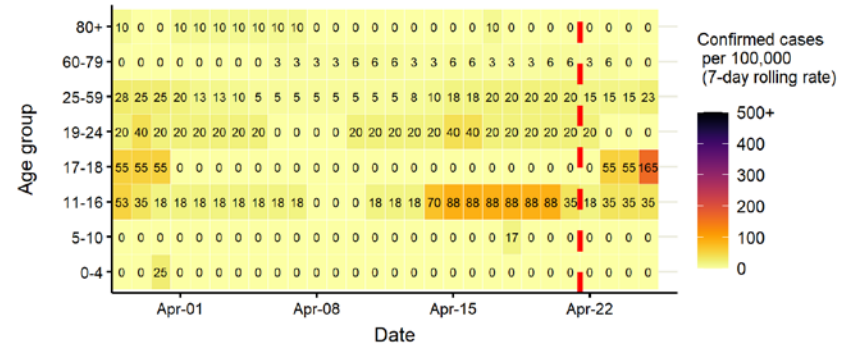
Daily cases from 1/10/2020: 60+ YEARS ONLY **NOTE: different y-axis scale**



4 days with incomplete data Pillar 1 Pillar 2 Total 7 day moving average (P1 + P2)



Age-stratified case rate heatmap for North Norfolk: 29 Mar to 25 Apr 2021

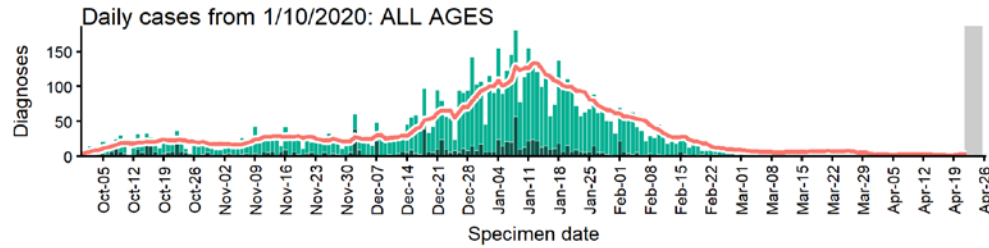


The red dashed line on the heatmaps show the last four days where data may be incomplete due to reporting delays and removal of LFDs with accompanying negative PCR results. Please consider this data provisional.

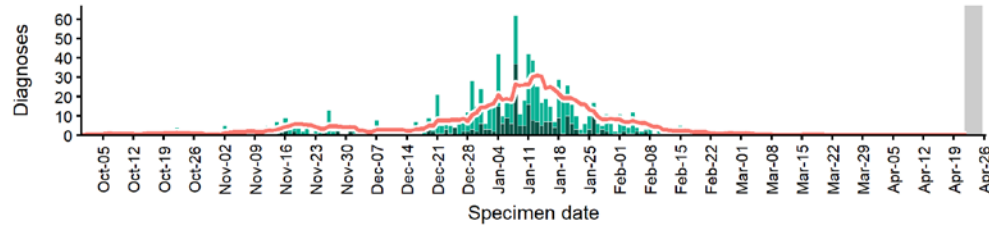
Data from SGSS. Produced by Outbreak Surveillance Team, PHE

Norwich case numbers, testing numbers and positivity, 1 Oct to 25 Apr 2021

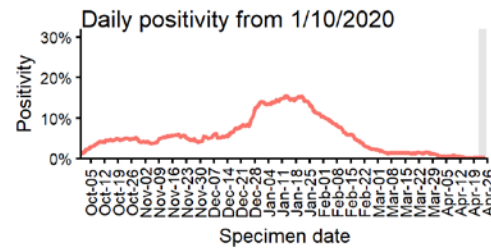
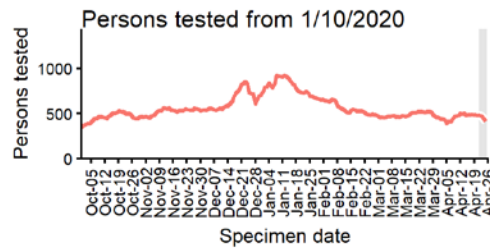
NORWICH Cases and persons tested up to April 25 2021



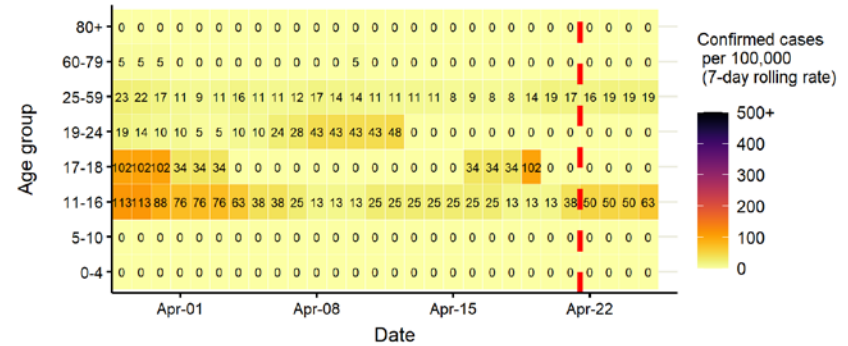
Daily cases from 1/10/2020: 60+ YEARS ONLY **NOTE: different y-axis scale**



4 days with incomplete data Pillar 1 Pillar 2 Total 7 day moving average (P1 + P2)



Age-stratified case rate heatmap for Norwich: 29 Mar to 25 Apr 2021

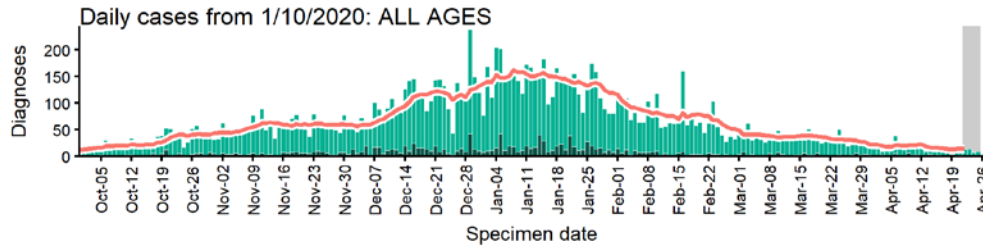


The red dashed line on the heatmaps show the last four days where data may be incomplete due to reporting delays and removal of LFDs with accompanying negative PCR results. Please consider this data provisional.

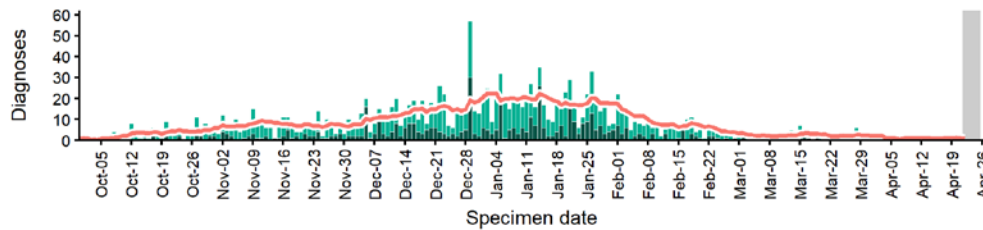
Data from SGSS. Produced by Outbreak Surveillance Team, PHE

Peterborough case numbers, testing numbers and positivity, 1 Oct to 25 Apr 2021

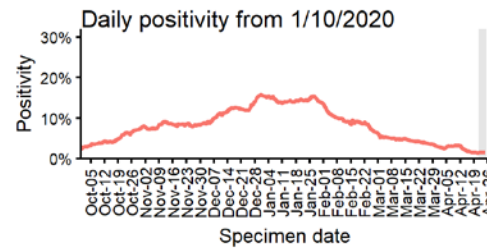
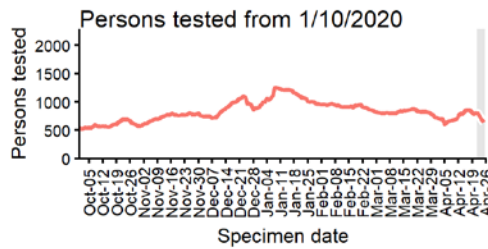
PETERBOROUGH
Cases and persons tested up to April 25 2021



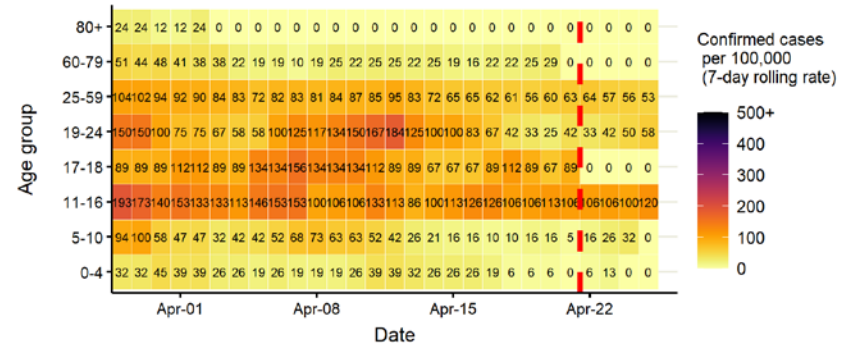
Daily cases from 1/10/2020: 60+ YEARS ONLY **NOTE: different y-axis scale**



4 days with incomplete data Pillar 1 Pillar 2 Total 7 day moving average (P1 + P2)



Age-stratified case rate heatmap for Peterborough: 29 Mar to 25 Apr 2021

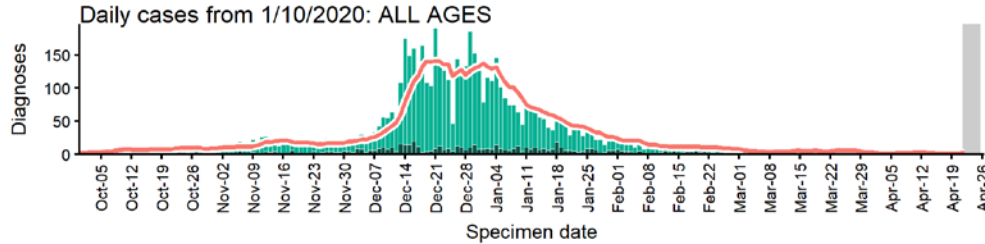


The red dashed line on the heatmaps show the last four days where data may be incomplete due to reporting delays and removal of LFDs with accompanying negative PCR results. Please consider this data provisional.

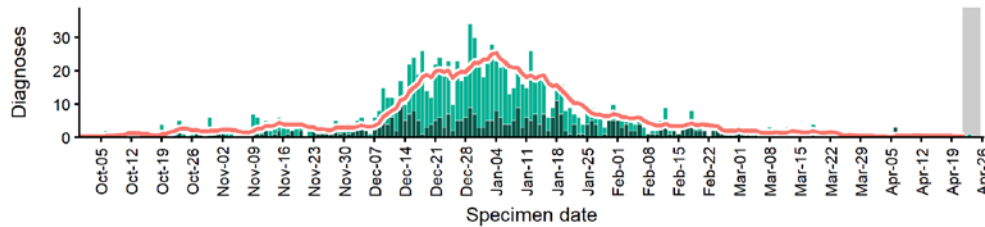
Data from SGSS. Produced by Outbreak Surveillance Team, PHE

Rochford case numbers, testing numbers and positivity, 1 Oct to 25 Apr 2021

ROCHFORD
Cases and persons tested up to April 25 2021

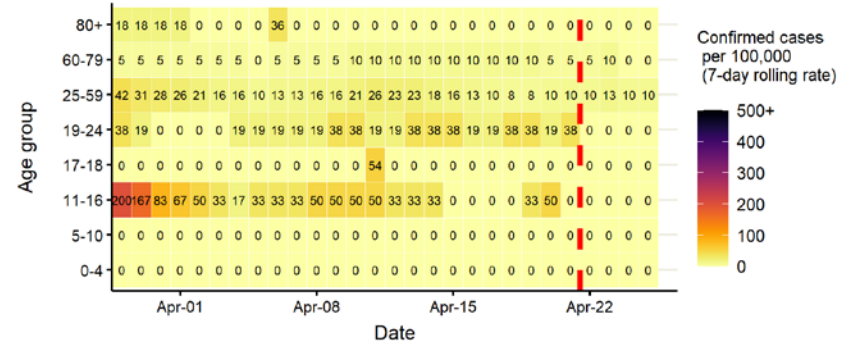


Daily cases from 1/10/2020: 60+ YEARS ONLY **NOTE: different y-axis scale**



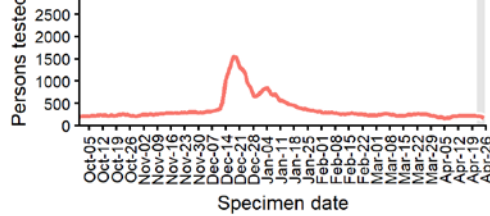
4 days with incomplete data Pillar 1 Pillar 2 Total 7 day moving average (P1 + P2)

Age-stratified case rate heatmap for Rochford: 29 Mar to 25 Apr 2021

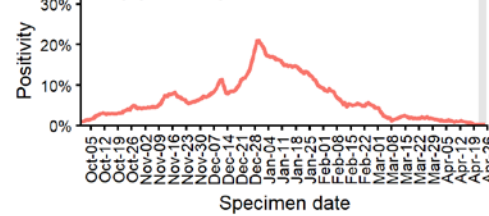


The red dashed line on the heatmaps show the last four days where data may be incomplete due to reporting delays and removal of LFDs with accompanying negative PCR results. Please consider this data provisional.

Persons tested from 1/10/2020



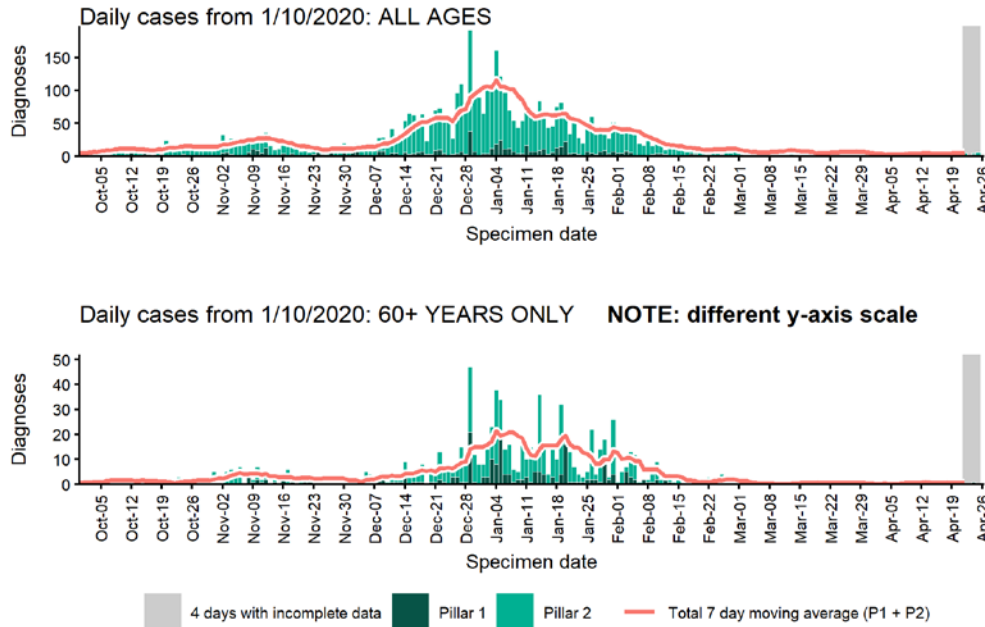
Daily positivity from 1/10/2020



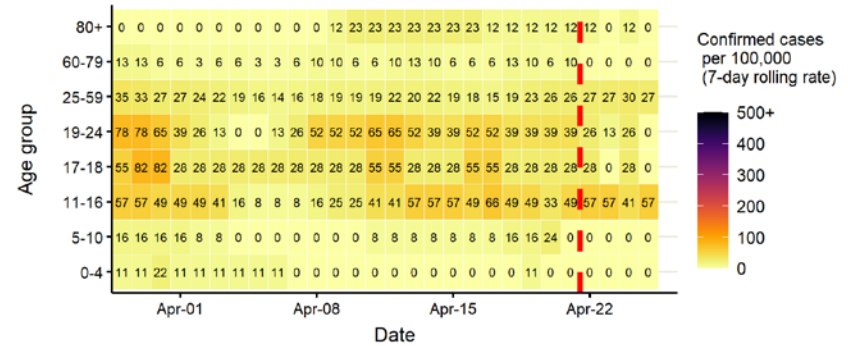
Data from SGSS. Produced by Outbreak Surveillance Team, PHE

South Cambridgeshire case numbers, testing numbers and positivity, 1 Oct to 25 Apr 2021

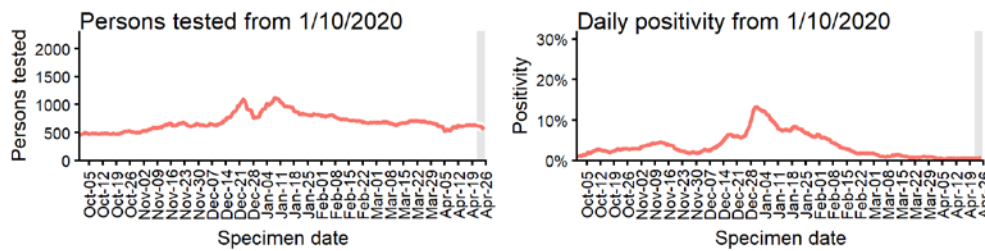
SOUTH CAMBRIDGESHIRE
Cases and persons tested up to April 25 2021



Age-stratified case rate heatmap for South Cambridgeshire: 29 Mar to 25 Apr 2021



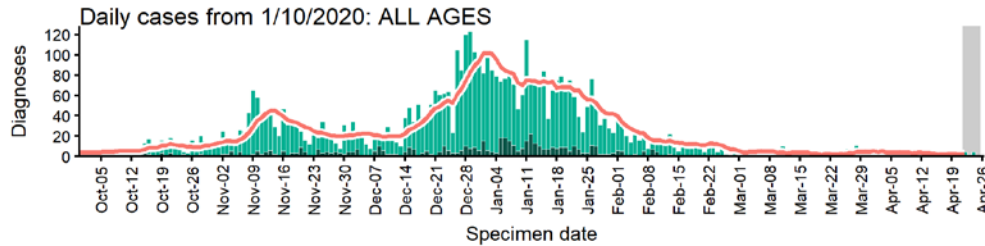
The red dashed line on the heatmaps show the last four days where data may be incomplete due to reporting delays and removal of LFDs with accompanying negative PCR results. Please consider this data provisional.



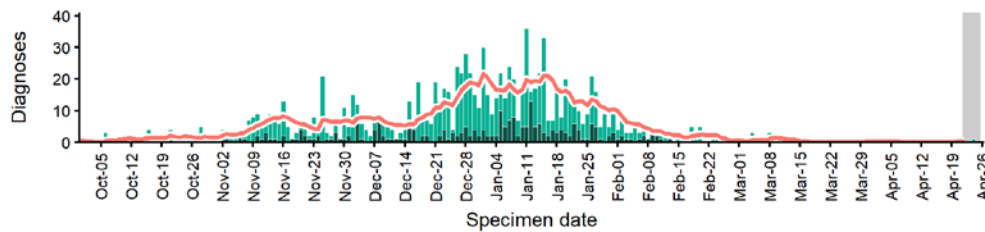
Data from SGSS. Produced by Outbreak Surveillance Team, PHE

South Norfolk case numbers, testing numbers and positivity, 1 Oct to 25 Apr 2021

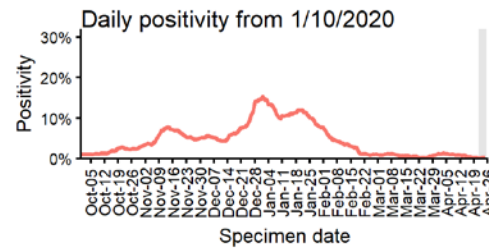
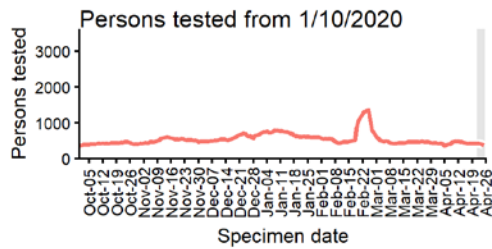
SOUTH NORFOLK Cases and persons tested up to April 25 2021



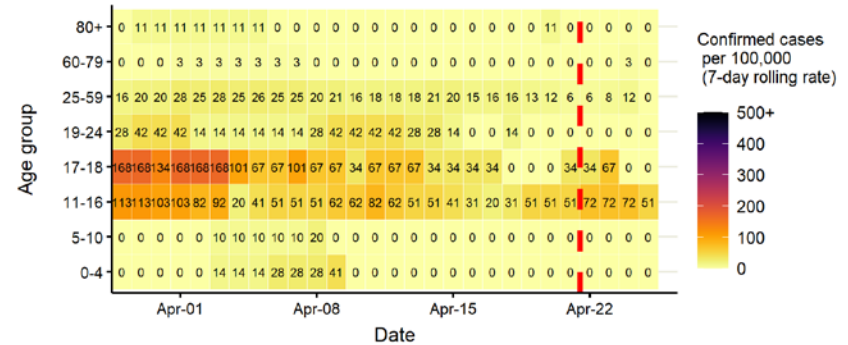
Daily cases from 1/10/2020: 60+ YEARS ONLY **NOTE: different y-axis scale**



4 days with incomplete data
 Pillar 1
 Pillar 2
 Total 7 day moving average (P1 + P2)



Age-stratified case rate heatmap for South Norfolk: 29 Mar to 25 Apr 2021

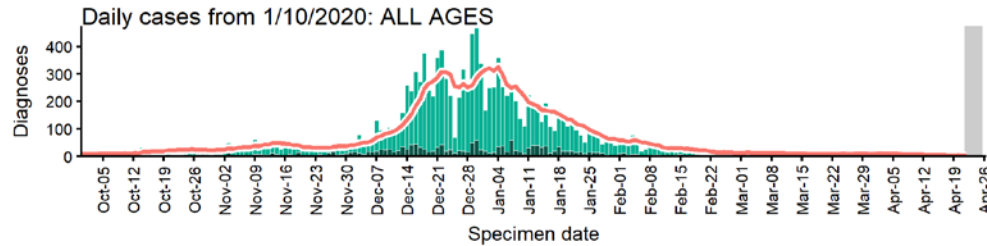


The red dashed line on the heatmaps show the last four days where data may be incomplete due to reporting delays and removal of LFDs with accompanying negative PCR results. Please consider this data provisional.

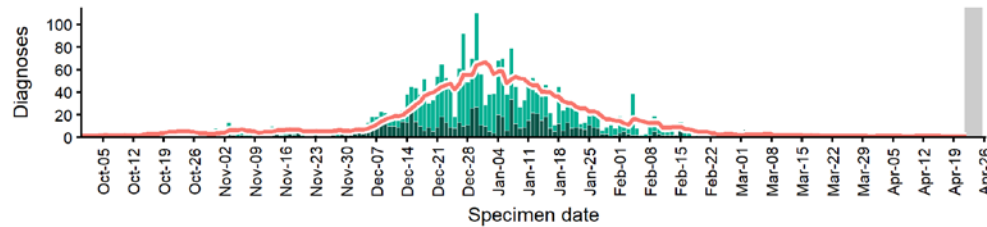
Data from SGSS. Produced by Outbreak Surveillance Team, PHE

Southend-on-Sea case numbers, testing numbers and positivity, 1 Oct to 25 Apr 2021

SOUTHEND-ON-SEA
Cases and persons tested up to April 25 2021

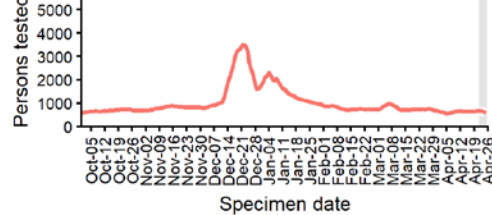


Daily cases from 1/10/2020: 60+ YEARS ONLY **NOTE: different y-axis scale**

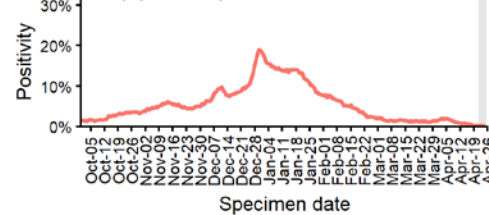


4 days with incomplete data Pillar 1 Pillar 2 Total 7 day moving average (P1 + P2)

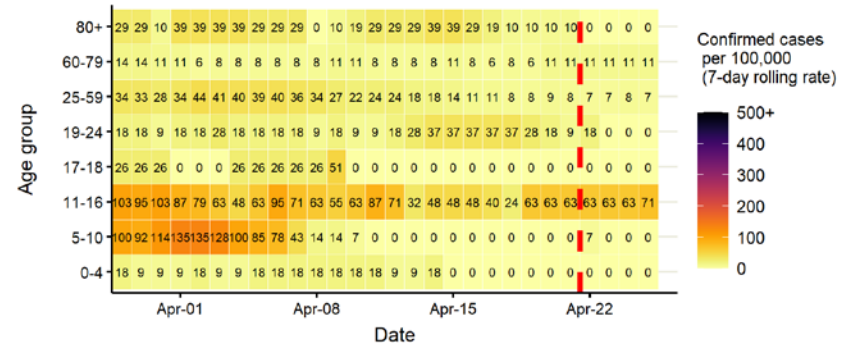
Persons tested from 1/10/2020



Daily positivity from 1/10/2020



Age-stratified case rate heatmap for Southend-on-Sea: 29 Mar to 25 Apr 2021

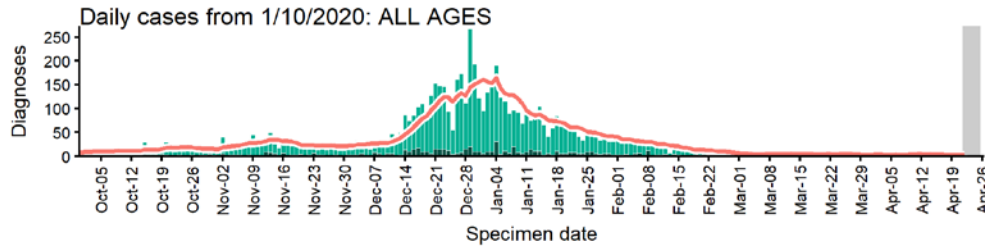


The red dashed line on the heatmaps show the last four days where data may be incomplete due to reporting delays and removal of LFDs with accompanying negative PCR results. Please consider this data provisional.

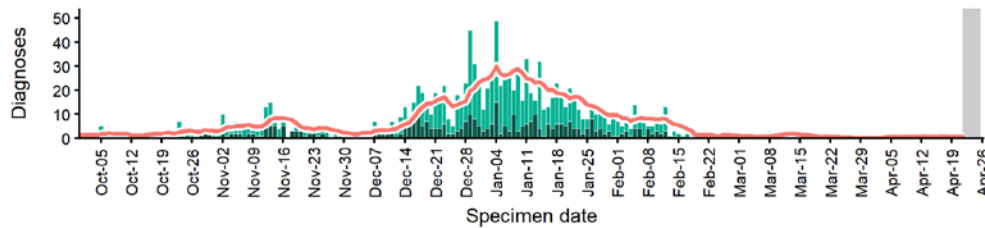
Data from SGSS. Produced by Outbreak Surveillance Team, PHE

St Albans case numbers, testing numbers and positivity, 1 Oct to 25 Apr 2021

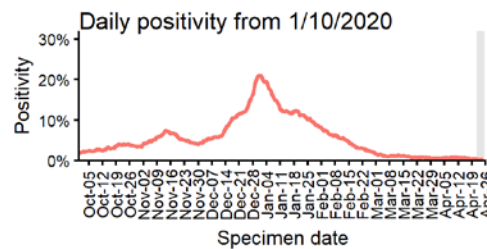
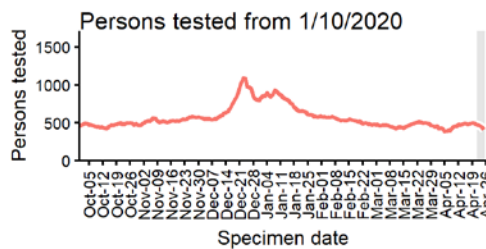
ST ALBANS
Cases and persons tested up to April 25 2021



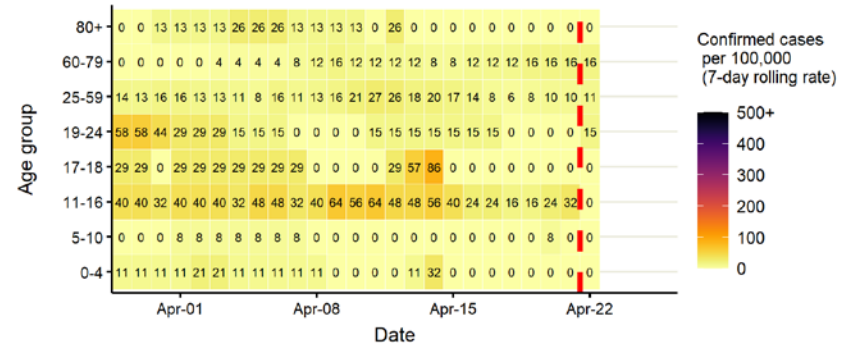
Daily cases from 1/10/2020: 60+ YEARS ONLY **NOTE: different y-axis scale**



4 days with incomplete data Pillar 1 Pillar 2 Total 7 day moving average (P1 + P2)



Age-stratified case rate heatmap for St Albans: 29 Mar to 25 Apr 2021

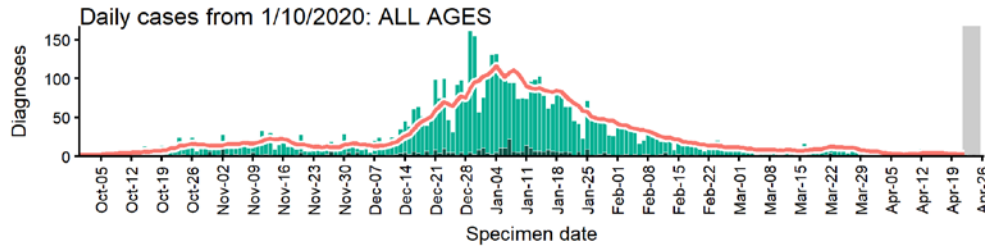


The red dashed line on the heatmaps show the last four days where data may be incomplete due to reporting delays and removal of LFDs with accompanying negative PCR results. Please consider this data provisional.

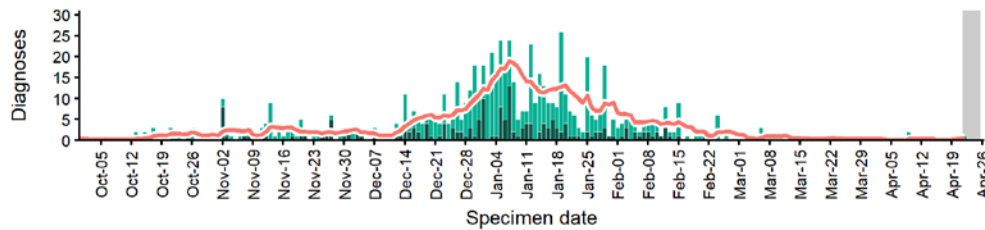
Data from SGSS. Produced by Outbreak Surveillance Team, PHE

Stevenage case numbers, testing numbers and positivity, 1 Oct to 25 Apr 2021

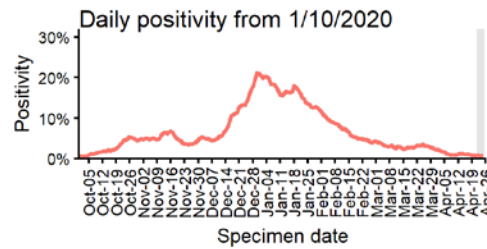
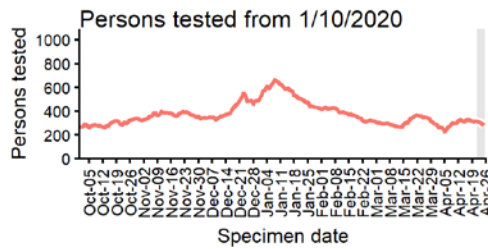
STEVENAGE Cases and persons tested up to April 25 2021



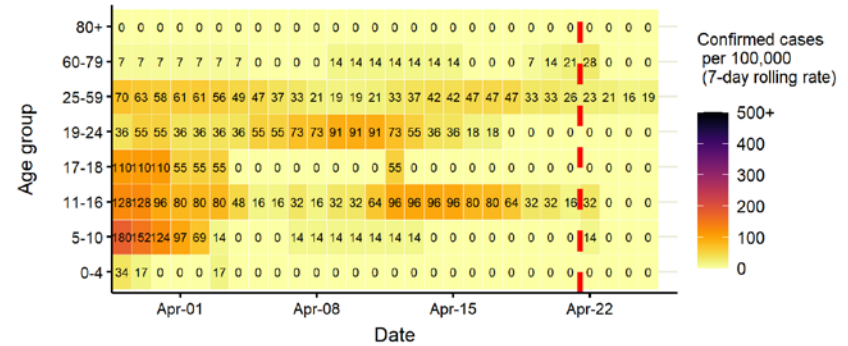
Daily cases from 1/10/2020: 60+ YEARS ONLY **NOTE: different y-axis scale**



4 days with incomplete data
 Pillar 1
 Pillar 2
 Total 7 day moving average (P1 + P2)



Age-stratified case rate heatmap for Stevenage: 29 Mar to 25 Apr 2021

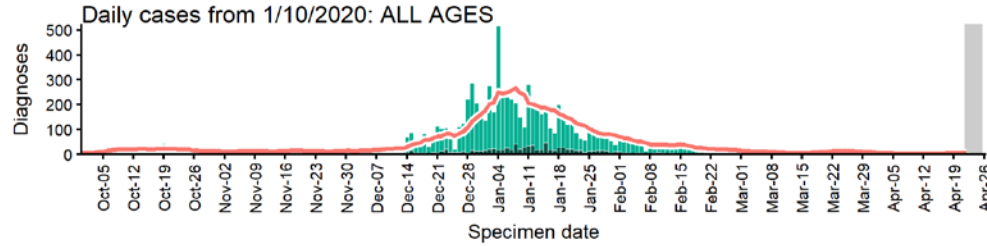


The red dashed line on the heatmaps show the last four days where data may be incomplete due to reporting delays and removal of LFDs with accompanying negative PCR results. Please consider this data provisional.

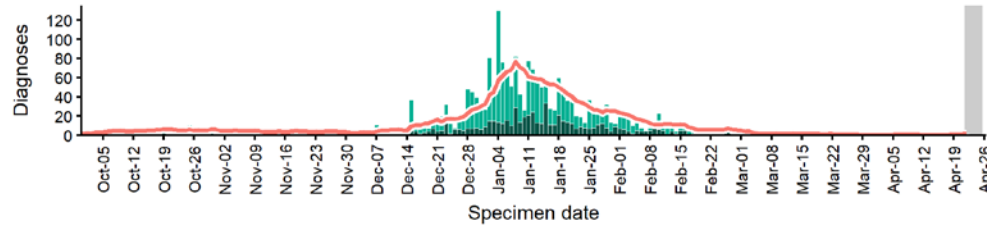
Data from SGSS. Produced by Outbreak Surveillance Team, PHE

Trending case numbers, testing numbers and positivity, 1 Oct to 25 Apr 2021

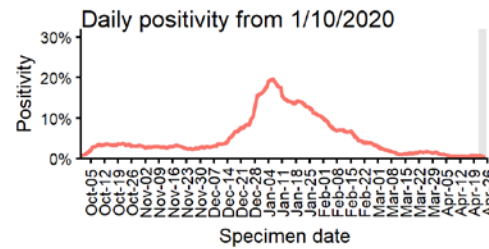
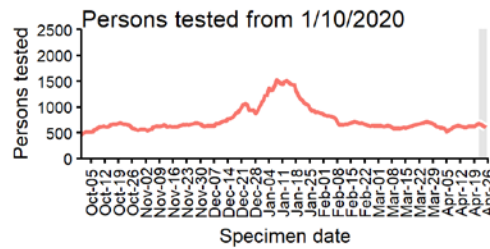
TENDRING Cases and persons tested up to April 25 2021



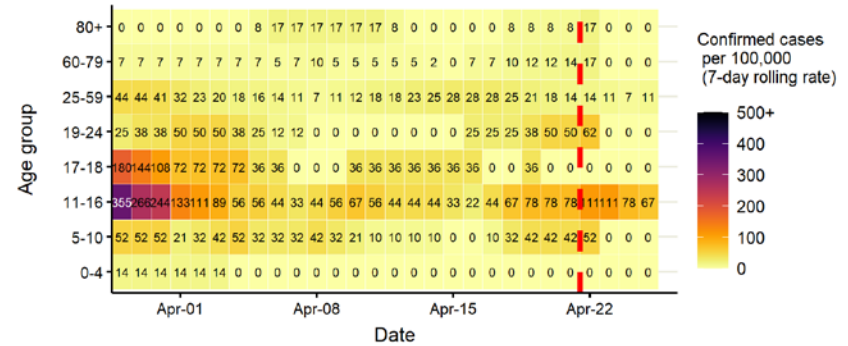
Daily cases from 1/10/2020: 60+ YEARS ONLY **NOTE: different y-axis scale**



4 days with incomplete data
 Pillar 1
 Pillar 2
 Total 7 day moving average (P1 + P2)



Age-stratified case rate heatmap for Tendring: 29 Mar to 25 Apr 2021

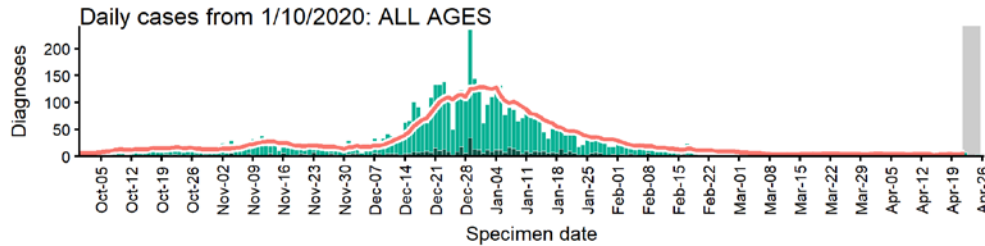


The red dashed line on the heatmaps show the last four days where data may be incomplete due to reporting delays and removal of LFDs with accompanying negative PCR results. Please consider this data provisional.

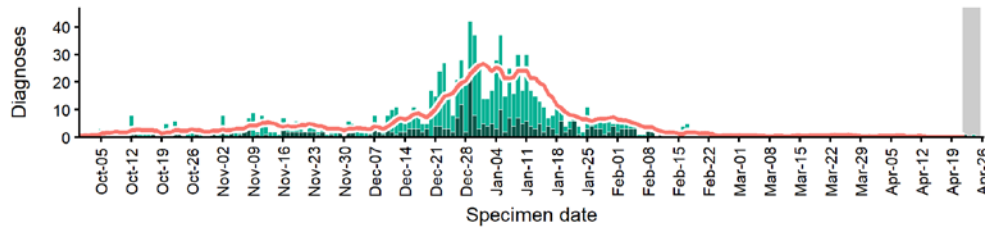
Data from SGSS. Produced by Outbreak Surveillance Team, PHE

Three Rivers case numbers, testing numbers and positivity, 1 Oct to 25 Apr 2021

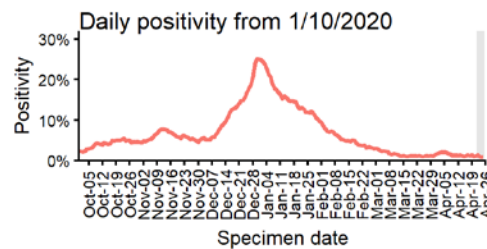
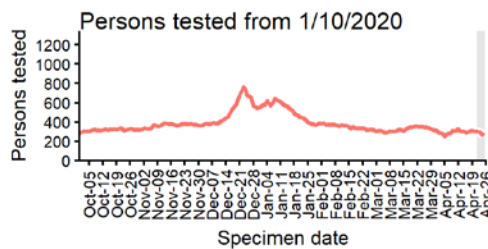
THREE RIVERS Cases and persons tested up to April 25 2021



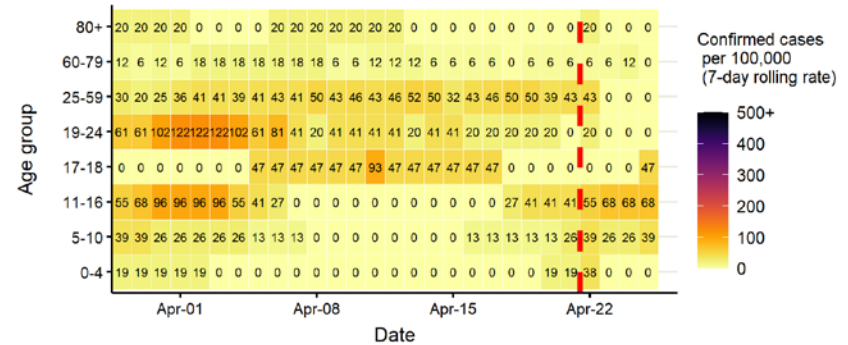
Daily cases from 1/10/2020: 60+ YEARS ONLY **NOTE: different y-axis scale**



4 days with incomplete data
 Pillar 1
 Pillar 2
 Total 7 day moving average (P1 + P2)



Age-stratified case rate heatmap for Three Rivers: 29 Mar to 25 Apr 2021

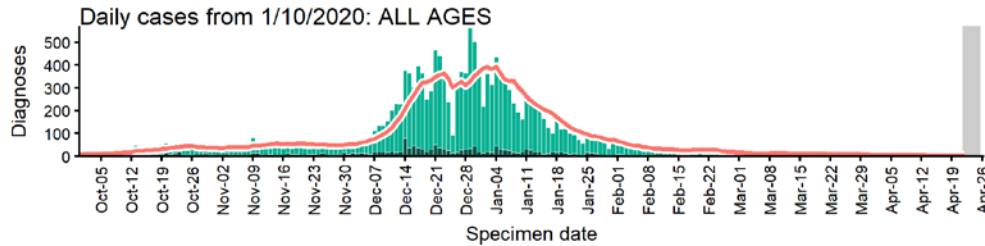


The red dashed line on the heatmaps show the last four days where data may be incomplete due to reporting delays and removal of LFDs with accompanying negative PCR results. Please consider this data provisional.

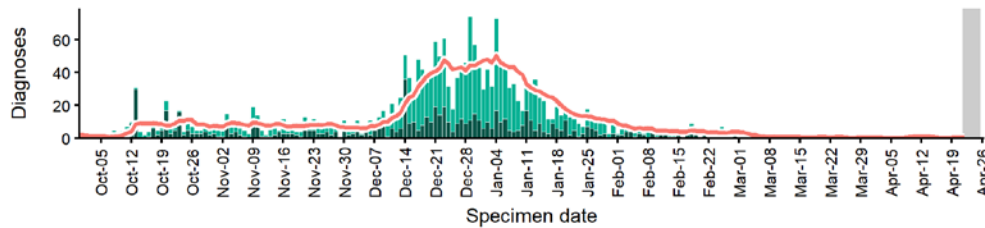
Data from SGSS. Produced by Outbreak Surveillance Team, PHE

Thurrock case numbers, testing numbers and positivity, 1 Oct to 25 Apr 2021

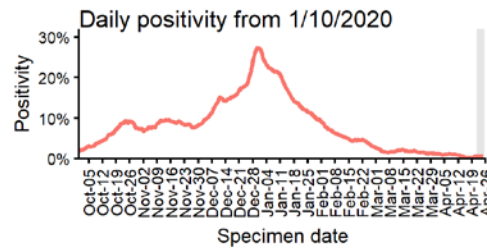
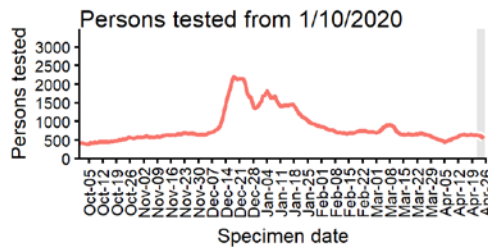
THURROCK Cases and persons tested up to April 25 2021



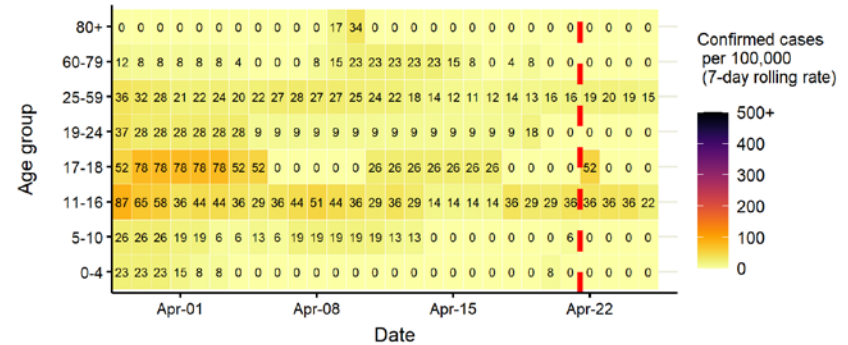
Daily cases from 1/10/2020: 60+ YEARS ONLY **NOTE: different y-axis scale**



4 days with incomplete data
 Pillar 1
 Pillar 2
 Total 7 day moving average (P1 + P2)



Age-stratified case rate heatmap for Thurrock: 29 Mar to 25 Apr 2021

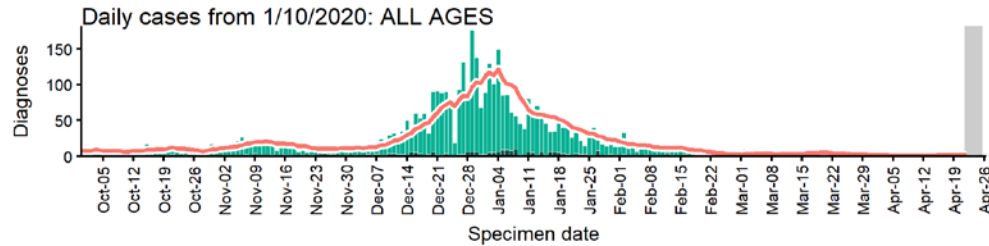


The red dashed line on the heatmaps show the last four days where data may be incomplete due to reporting delays and removal of LFDs with accompanying negative PCR results. Please consider this data provisional.

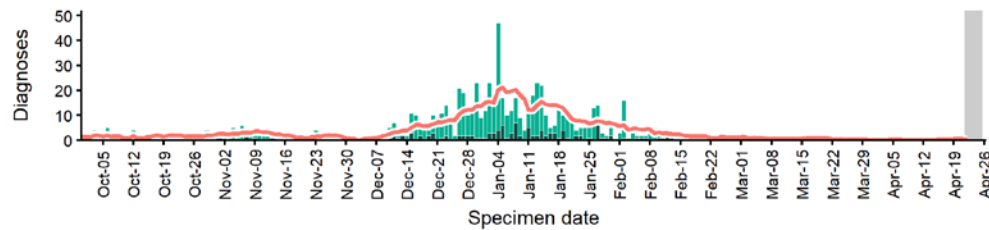
Data from SGSS. Produced by Outbreak Surveillance Team, PHE

Uttlesford case numbers, testing numbers and positivity, 1 Oct to 25 Apr 2021

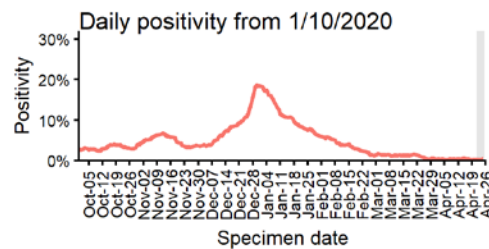
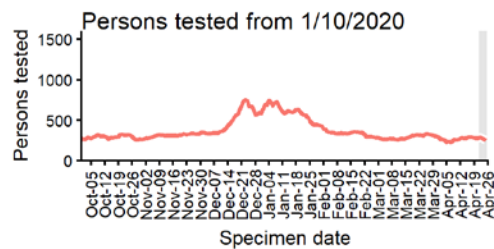
UTTLESFORD Cases and persons tested up to April 25 2021



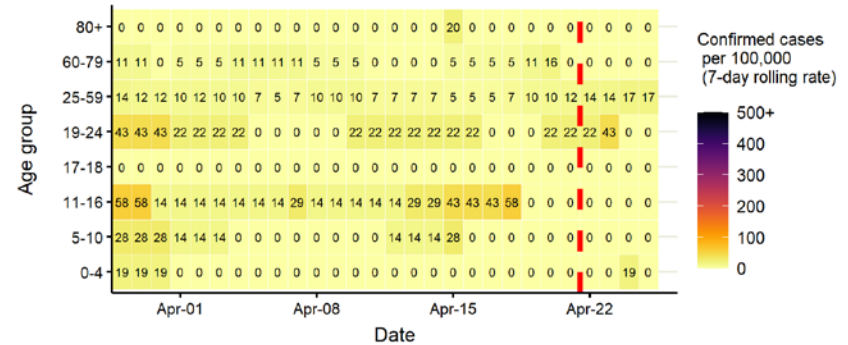
Daily cases from 1/10/2020: 60+ YEARS ONLY **NOTE: different y-axis scale**



4 days with incomplete data Pillar 1 Pillar 2 Total 7 day moving average (P1 + P2)



Age-stratified case rate heatmap for Uttlesford: 29 Mar to 25 Apr 2021

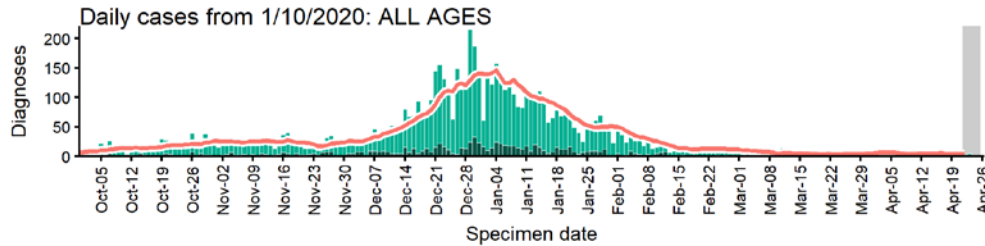


The red dashed line on the heatmaps show the last four days where data may be incomplete due to reporting delays and removal of LFDs with accompanying negative PCR results. Please consider this data provisional.

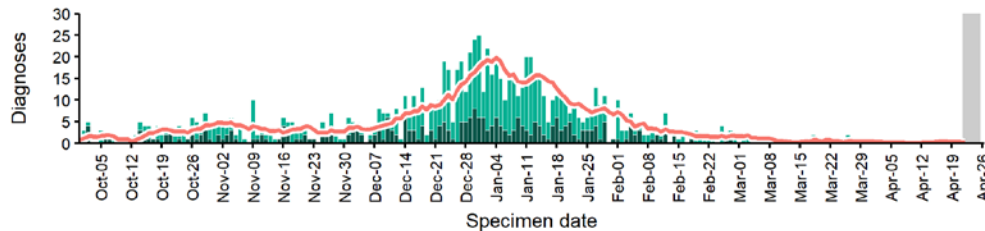
Data from SGSS. Produced by Outbreak Surveillance Team, PHE

Watford case numbers, testing numbers and positivity, 1 Oct to 25 Apr 2021

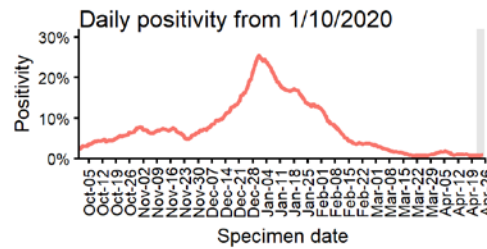
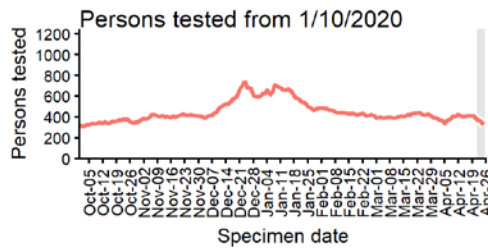
WATFORD
Cases and persons tested up to April 25 2021



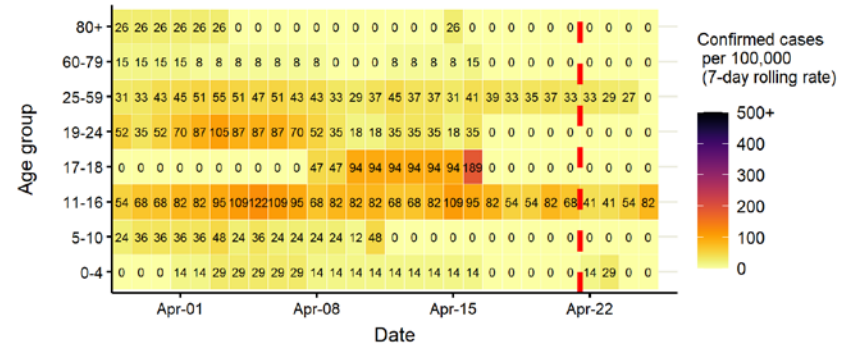
Daily cases from 1/10/2020: 60+ YEARS ONLY **NOTE: different y-axis scale**



4 days with incomplete data Pillar 1 Pillar 2 Total 7 day moving average (P1 + P2)



Age-stratified case rate heatmap for Watford: 29 Mar to 25 Apr 2021

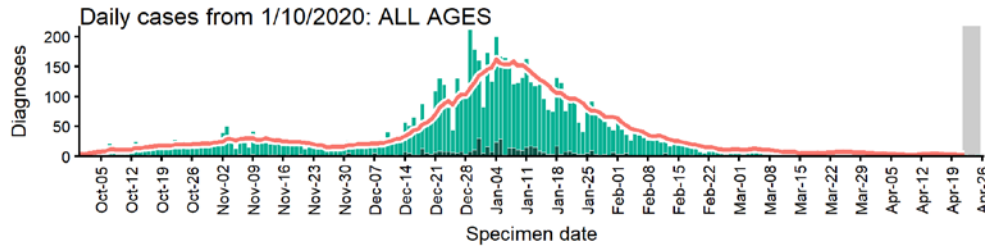


The red dashed line on the heatmaps show the last four days where data may be incomplete due to reporting delays and removal of LFDs with accompanying negative PCR results. Please consider this data provisional.

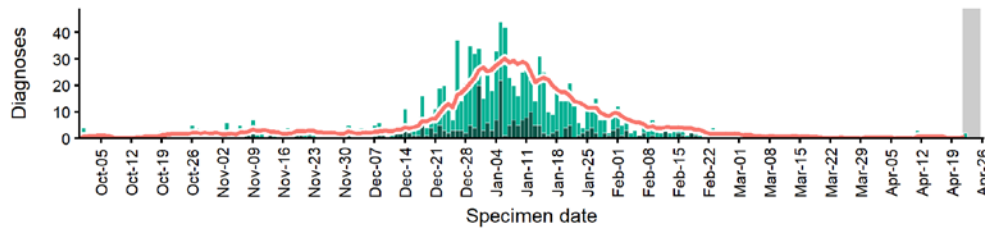
Data from SGSS. Produced by Outbreak Surveillance Team, PHE

Welwyn Hatfield case numbers, testing numbers and positivity, 1 Oct to 25 Apr 2021

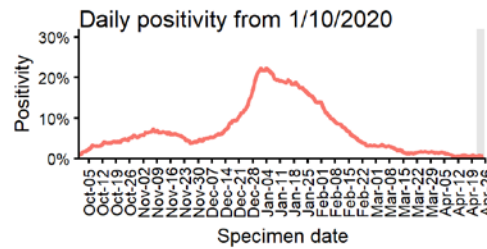
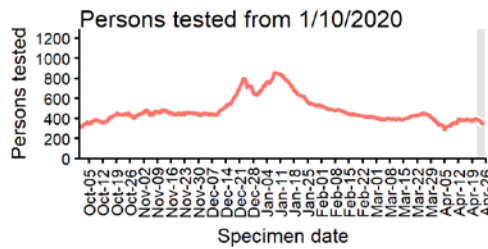
WELWYN HATFIELD
Cases and persons tested up to April 25 2021



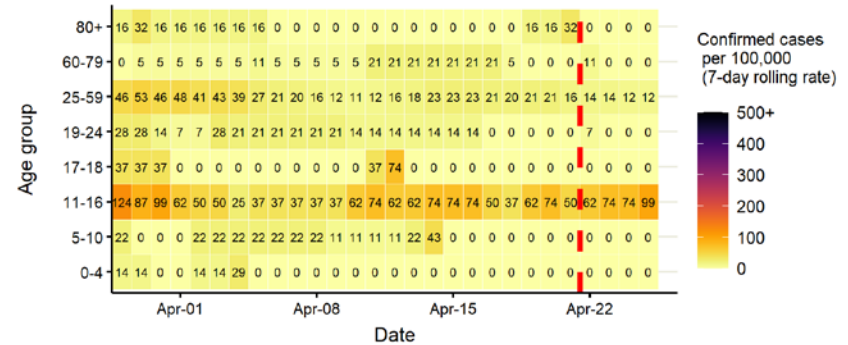
Daily cases from 1/10/2020: 60+ YEARS ONLY **NOTE: different y-axis scale**



4 days with incomplete data
 Pillar 1
 Pillar 2
 Total 7 day moving average (P1 + P2)



Age-stratified case rate heatmap for Welwyn Hatfield: 29 Mar to 25 Apr 2021

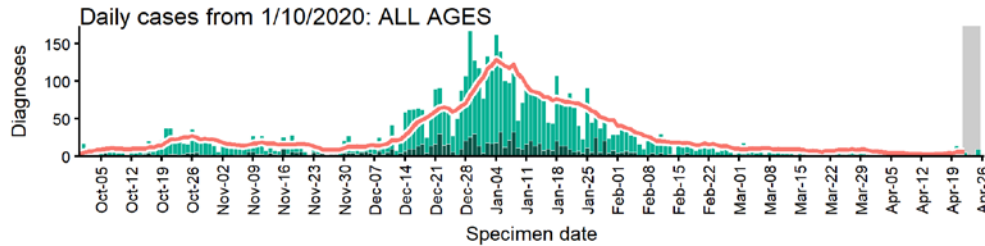


The red dashed line on the heatmaps show the last four days where data may be incomplete due to reporting delays and removal of LFDs with accompanying negative PCR results. Please consider this data provisional.

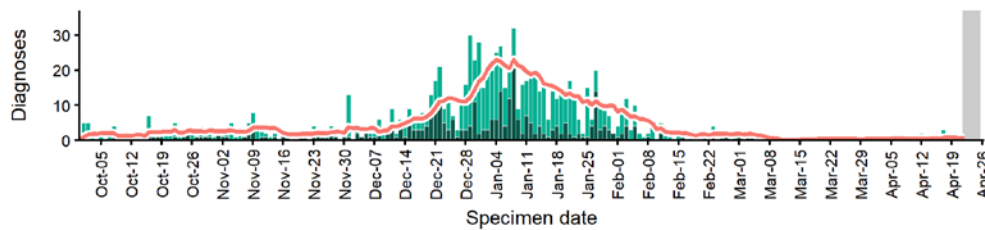
Data from SGSS. Produced by Outbreak Surveillance Team, PHE

West Suffolk case numbers, testing numbers and positivity, 1 Oct to 25 Apr 2021

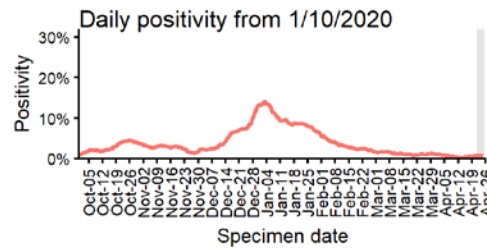
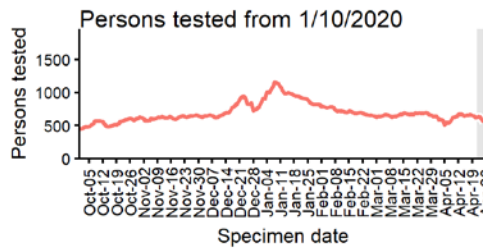
WEST SUFFOLK
Cases and persons tested up to April 25 2021



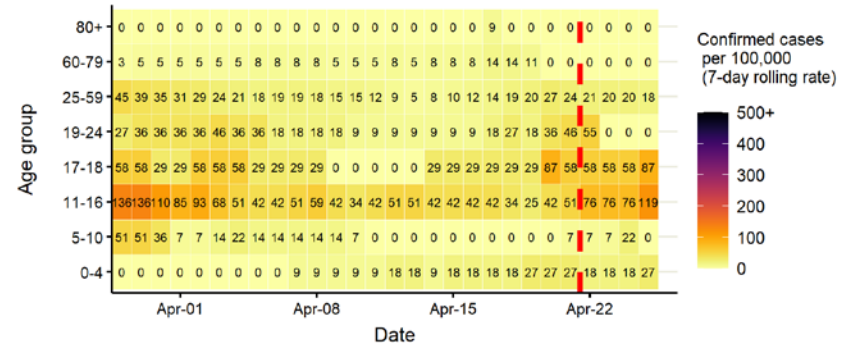
Daily cases from 1/10/2020: 60+ YEARS ONLY **NOTE: different y-axis scale**



4 days with incomplete data Pillar 1 Pillar 2 Total 7 day moving average (P1 + P2)



Age-stratified case rate heatmap for West Suffolk: 29 Mar to 25 Apr 2021



The red dashed line on the heatmaps show the last four days where data may be incomplete due to reporting delays and removal of LFDs with accompanying negative PCR results. Please consider this data provisional.

Data from SGSS. Produced by Outbreak Surveillance Team, PHE

© Crown copyright 2020

www.gov.uk/dhsc

This publication is licensed under the terms of the Open Government Licence v3.0 except where otherwise stated. To view this licence, visit nationalarchives.gov.uk/doc/open-government-licence/version/3

Where we have identified any third party copyright information you will need to obtain permission from the copyright holders concerned.

OGL