

## THE EVENTS RESEARCH PROGRAMME DIRECTION – OUTDOOR MUSIC EVENT 2021

### THE HEALTH PROTECTION (CORONAVIRUS, RESTRICTIONS) (STEPS) (ENGLAND) REGULATIONS 2021

The Secretary of State for Digital, Culture, Media and Sport and the Secretary of State for Health and Social Care, in exercise of the powers conferred by regulation 9 of the Health Protection (Coronavirus, Restrictions) (Steps) (England) Regulations 2021 (the ‘Regulations’)<sup>1</sup>, make the following Direction for the purposes of a research programme to evidence the potential transmission of coronavirus in controlled environments.

Before making this Direction, the Secretaries of State have consulted with Professor Jonathan Van-Tam of the Department of Health and Social Care and had regard to any advice given by him.

1. This Direction applies to—
  - a.
    - (i) the land comprising of those parts of Sefton Park, Liverpool, L17 1AP (‘Sefton Park’) whose exterior boundary is demarcated by a dotted and solid blue line on the map attached at Annex A (‘the Event Area’);
    - (ii) the areas indicated on the Map labelled ‘vehicle holding area’ and ‘production parking’ (‘holding and parking areas’); and
  - b. the Sefton Park Pilot Music Event (‘the Sefton Park Pilot’)
2. This Direction disapplies the following restrictions and requirements in relation to the Event Area and the holding and parking areas for the purposes of the Sefton Park Pilot on 2<sup>nd</sup> May 2021—
  - a. In relation to the Health Protection (Coronavirus, Restrictions) (Obligations of Undertakings) (England) Regulations 2020<sup>2</sup>—
    - (i) regulation 1A(1) (restrictions in relation to relevant premises);
    - (ii) regulation 2(1) (restrictions on hospitality undertakings).
    - (iii) regulation 2A(1) (requirements relating to signage and information).
  - b. In relation to the Health Protection (Coronavirus, Wearing of Face Coverings in a Relevant Place) (England) Regulations 2020<sup>3</sup>—
    - (i) regulation 3(1) (requirement to wear a face covering whilst entering or remaining within a relevant place)
  - c. In relation to the Regulations—
    - (i) paragraph 1, Schedule 2 (participation in gatherings indoors);

---

<sup>1</sup> S.I. 2021/364, as amended by S.I. 2021/455.

<sup>2</sup> S.I. 2020/1008, as amended by S.I. 2020/1046, 1057, 1103, 1104, 1105, 1154, 1200, 1374 and 1611, and S.I. 2021/364.

<sup>3</sup> S.I. 2020/791, as amended by S.I. 2020/839, 882, 906, 1021, 1026, 1028 and S.I. 2021/247

- (ii) paragraph 2, Schedule 2 (participation in gatherings outdoors);
- (iii) paragraph 8, Schedule 2 (requirement to close premises and businesses);
- (iv) paragraph 9, Schedule 2 (restrictions on service of food and drink for consumption on the premises).

Signed by or on behalf of the Secretary of State for Digital, Culture, Media and Sport

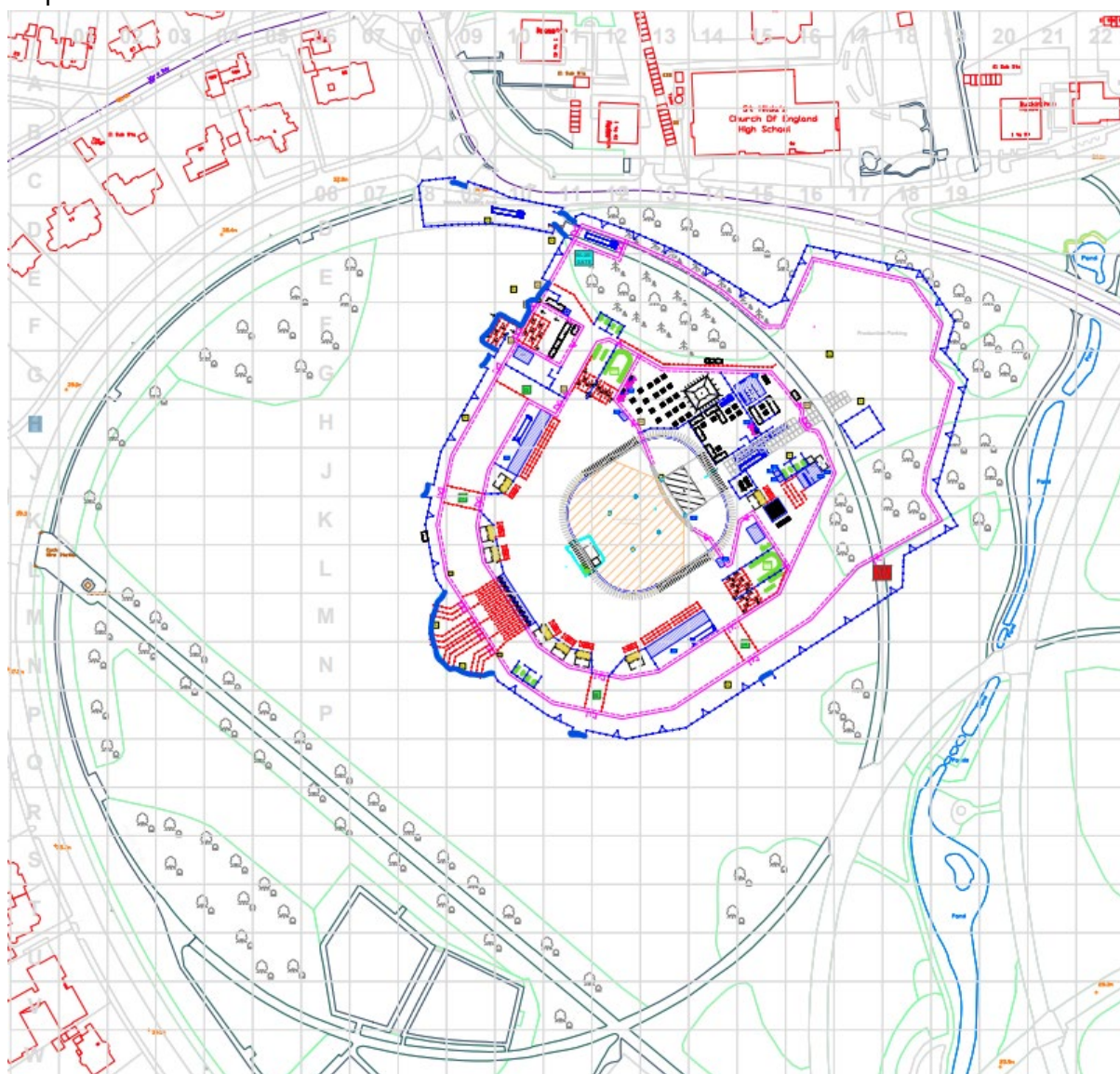
Date of signature

Signed by or on behalf of the Secretary of State for Health and Social Care

Date of signature

## ANNEX A

Map of



A copy of these maps, signed by a member of the Senior Civil Service in the Department for Digital, Culture, Media and Sport, is available for inspection at:

- a. 100 Parliament Street, Westminster, London SW1A 2BQ; and
- b. 30 St John Street, London EC1M