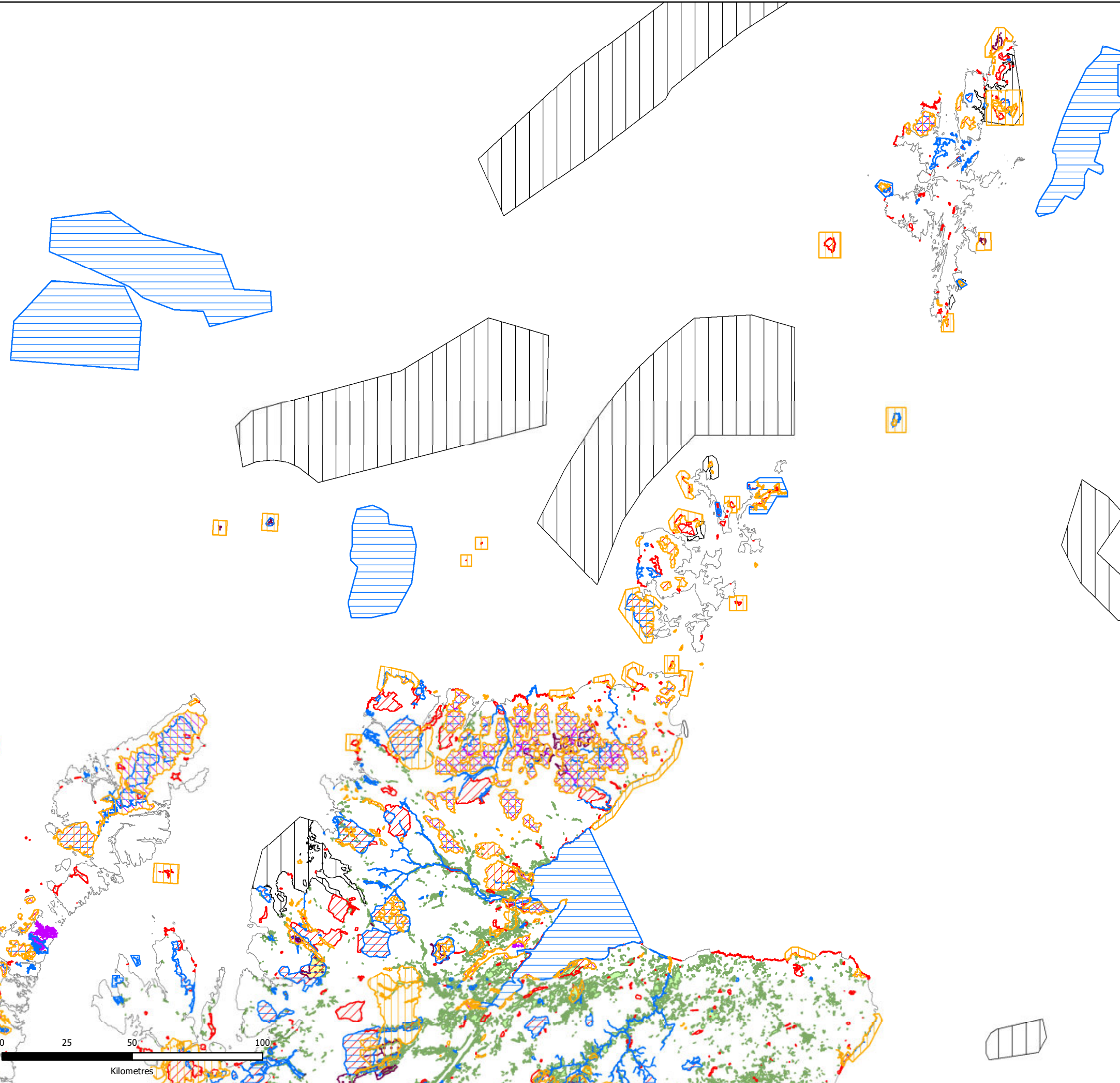
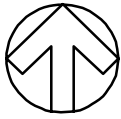

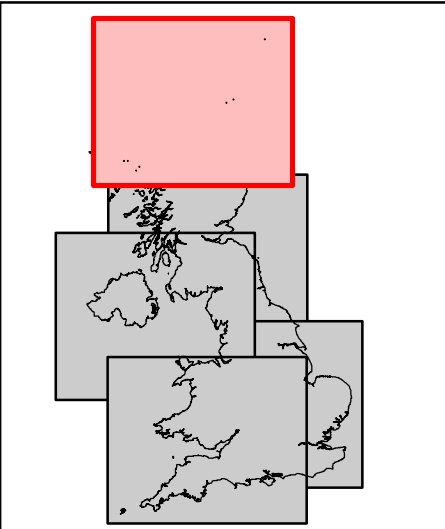


Appendix C. Baseline Maps



-  Special Protection Areas
-  Special Area of Conservation
-  Ramsar
-  Site of Special Scientific Interest / Area of Special Scientific Interest
-  National Nature Reserve
-  Ancient Woodland Inventory (England & Scotland)
-  Nature Conservation Marine Protected Areas (Scotland)
-  Marine Conservation Zones
-  Biosphere Reserve

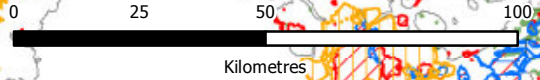


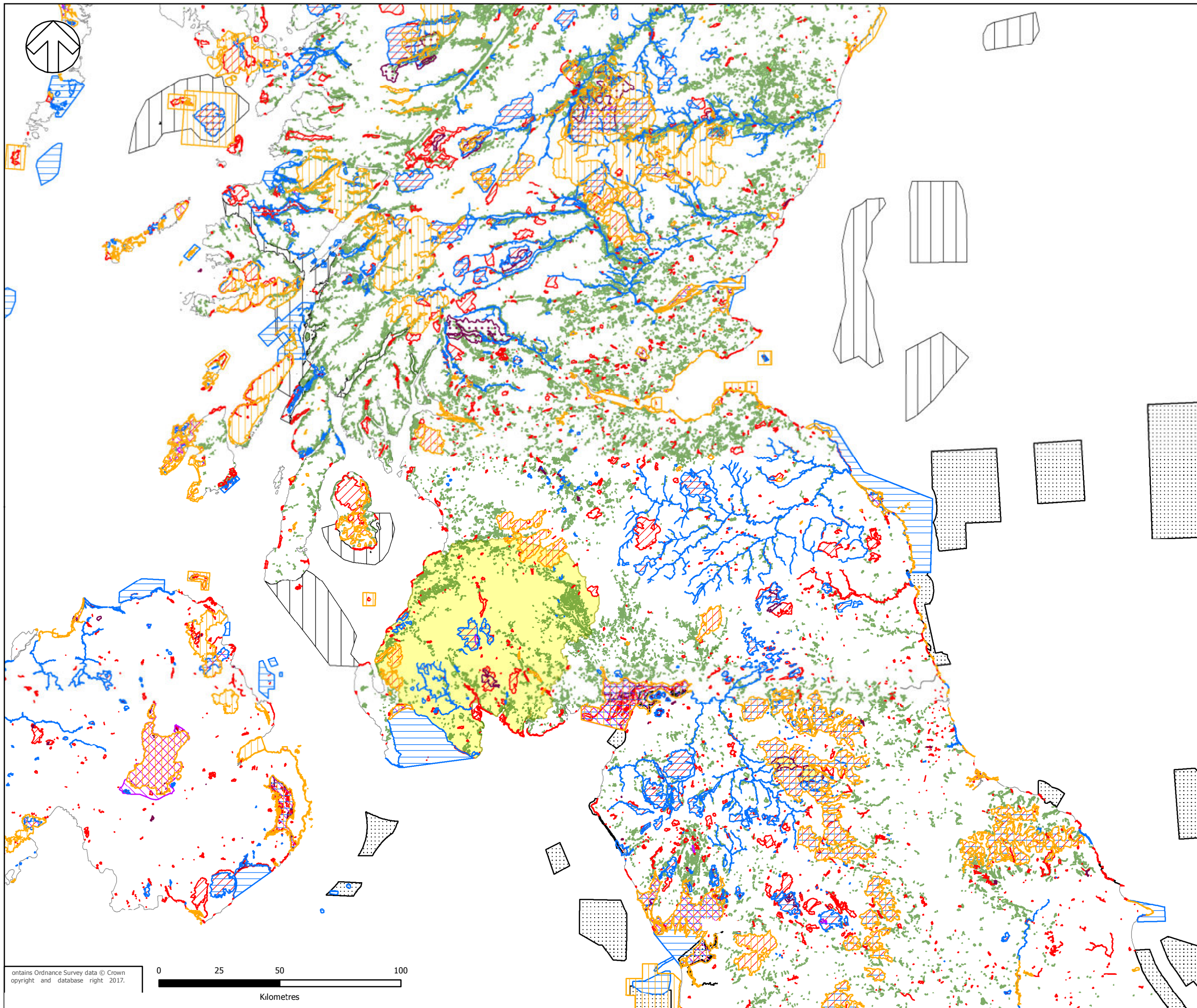

Department for
Business, Energy
& Industrial Strategy

TITLE:
ENERGY AoS SCOPING REPORT
BIODIVERSITY & ECOSYSTEMS
PAGE 1 OF 5

FIGURE No:
FIGURE 1

Contains Ordnance Survey data © Crown copyright and database right 2017.





- Special Protection Areas
- Special Area of Conservation
- Ramsar
- Site of Special Scientific Interest / Area of Special Scientific Interest
- National Nature Reserve
- Ancient Woodland Inventory (England & Scotland)
- Nature Conservation Marine Protected Areas (Scotland)
- Marine Conservation Zones
- Biosphere Reserve

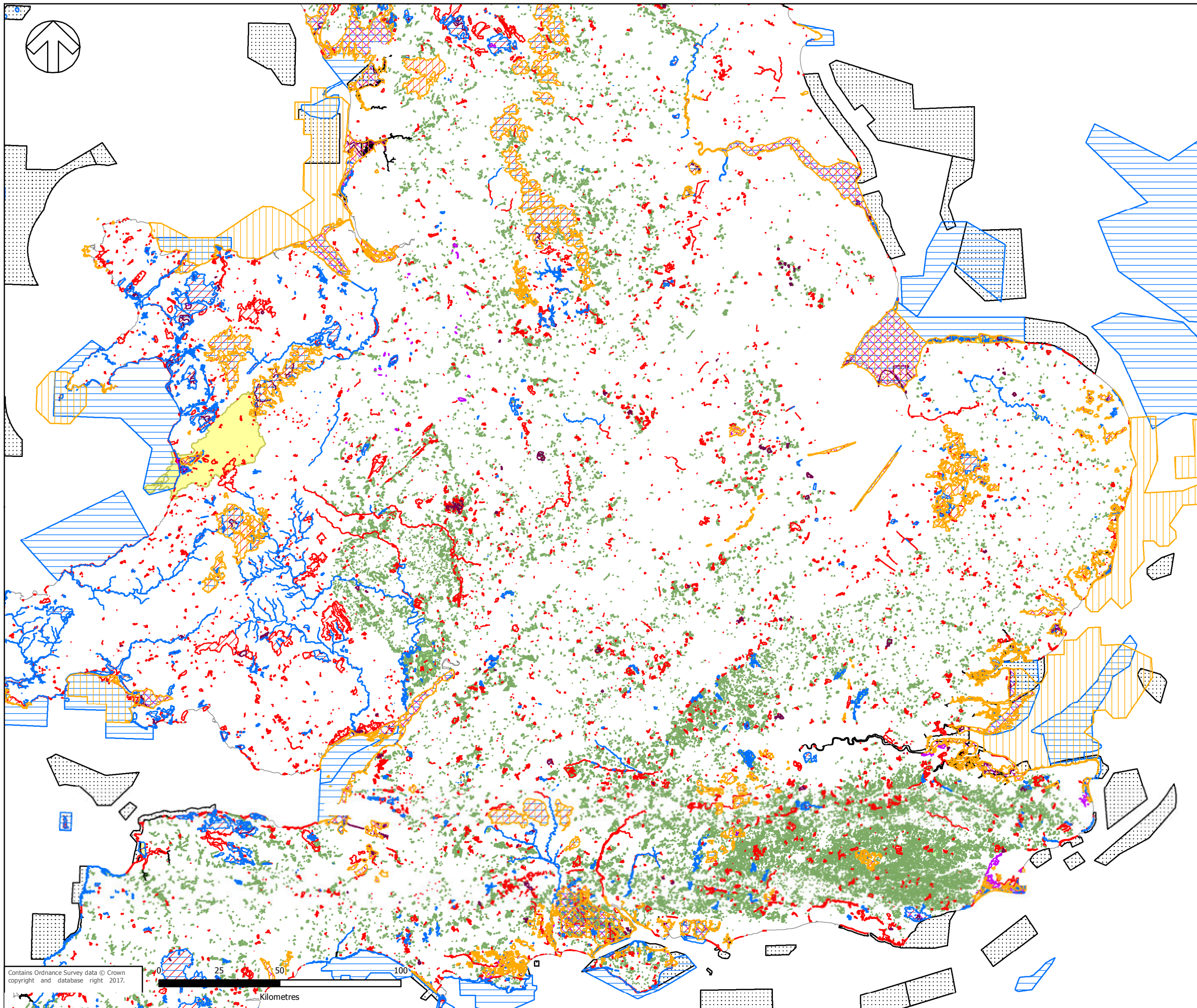
0 25 50 100
Kilometres

ontains Ordnance Survey data © Crown copyright and database right 2017.

Department for Business, Energy & Industrial Strategy

TITLE: ENERGY AoS SCOPING REPORT
BIODIVERSITY & ECOSYSTEMS
PAGE 2 OF 5

FIGURE No: **FIGURE 1**



-  Special Protection Areas
-  Special Area of Conservation
-  Ramsar
-  Site of Special Scientific Interest / Area of Special Scientific Interest
-  National Nature Reserve
-  Ancient Woodland Inventory (England & Scotland)
-  Nature Conservation Marine Protected Areas (Scotland)
-  Marine Conservation Zones
-  Biosphere Reserve

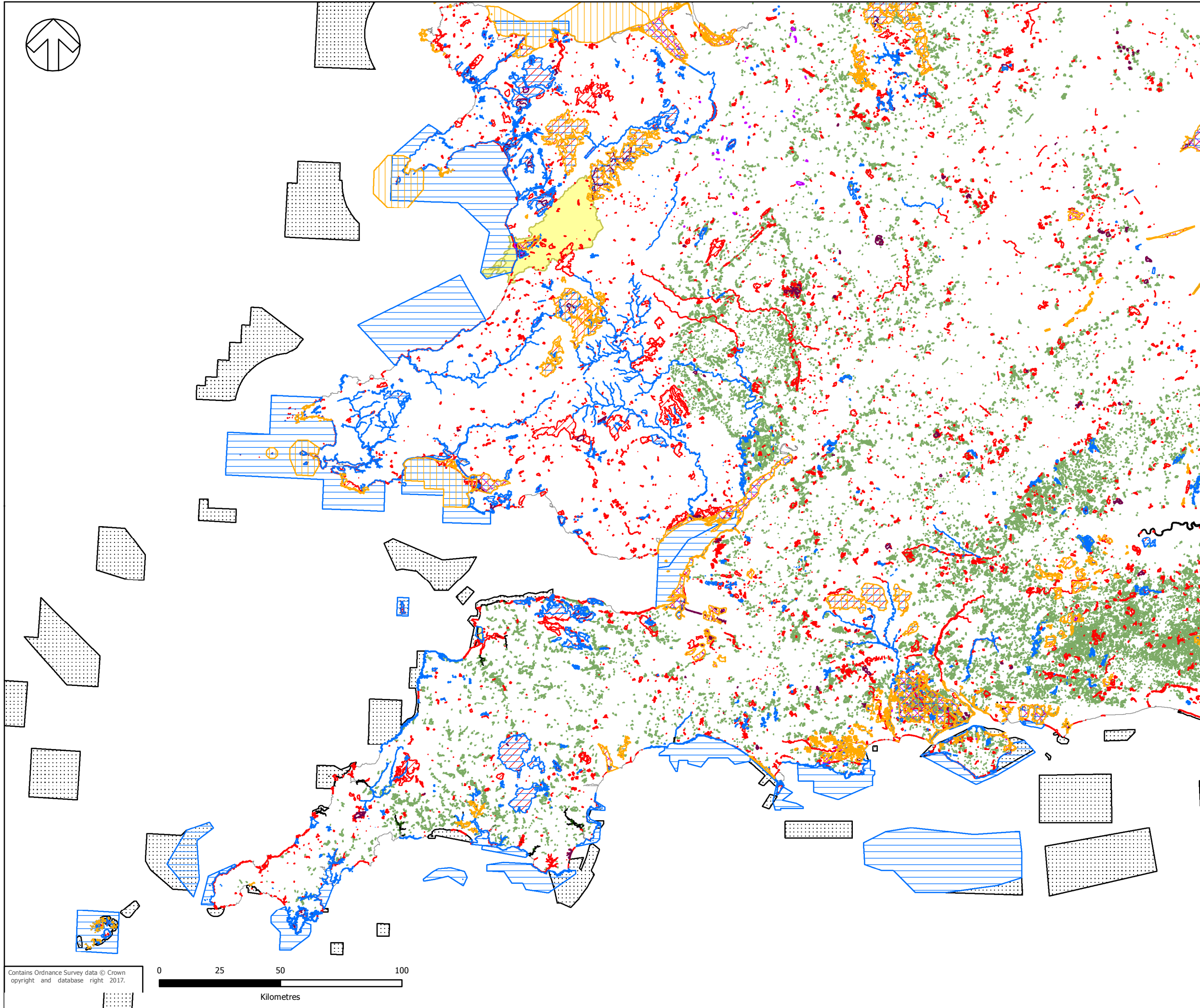

 Department for
 Business, Energy
 & Industrial Strategy



TITLE: ENERGY AoS SCOPING REPORT
 BIODIVERSITY & ECOSYSTEMS
 PAGE 3 OF 5

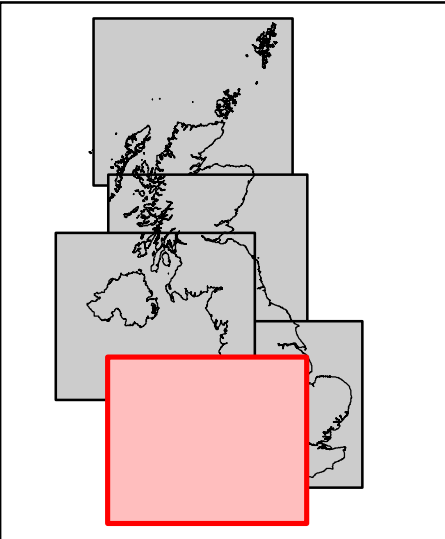
FIGURE No:
 FIGURE 1

Contains Ordnance Survey data © Crown copyright and database right 2017.





-  Special Protection Areas
-  Special Area of Conservation
-  Ramsar
-  Site of Special Scientific Interest / Area of Special Scientific Interest
-  National Nature Reserve
-  Ancient Woodland Inventory (England & Scotland)
-  Nature Conservation Marine Protected Areas (Scotland)
-  Marine Conservation Zones
-  Biosphere Reserve

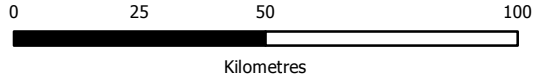


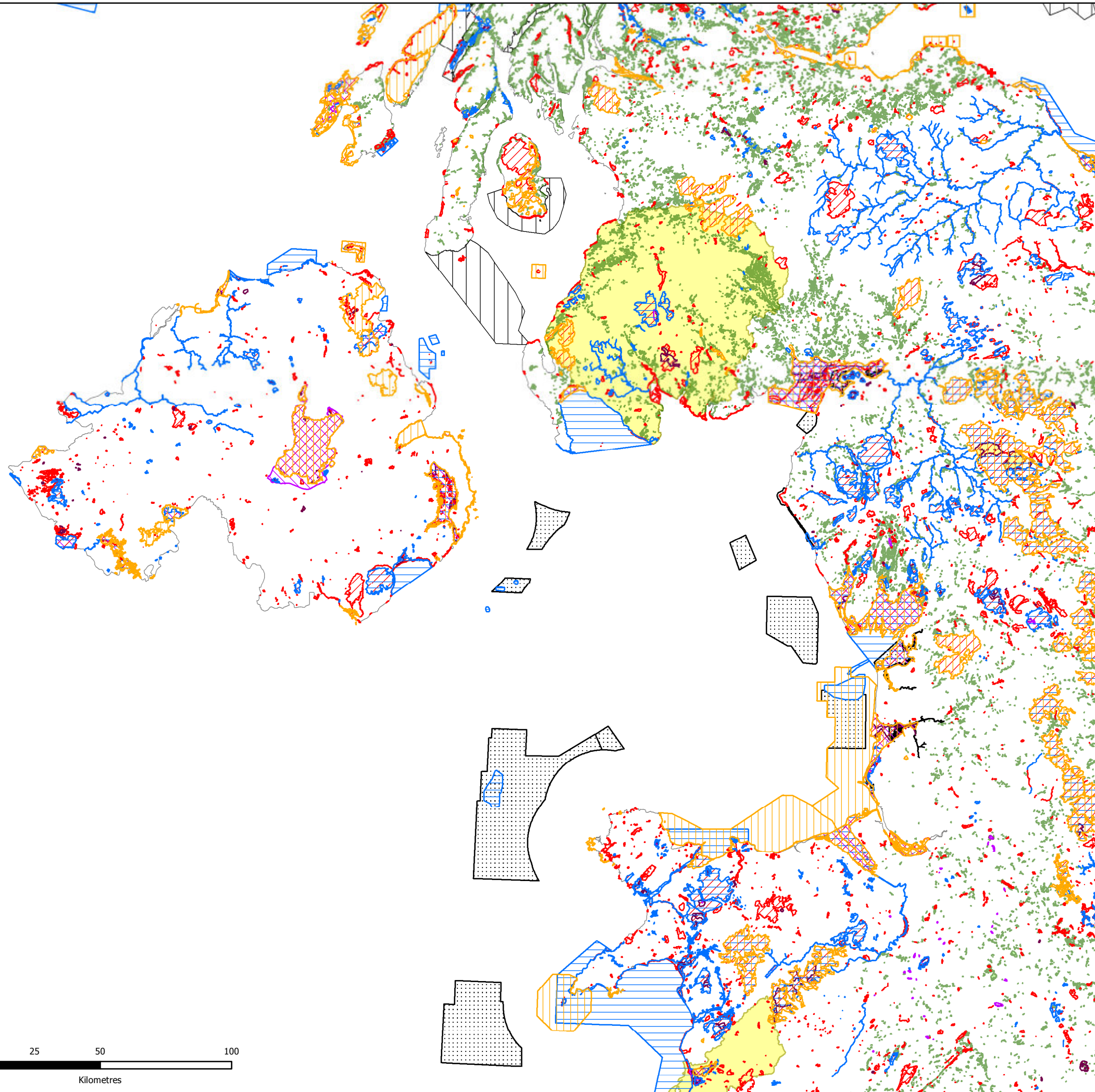
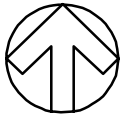

 Department for
 Business, Energy
 & Industrial Strategy







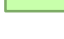

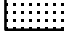
TITLE: ENERGY AoS SCOPING REPORT
 BIODIVERSITY & ECOSYSTEMS
 PAGE 4 OF 5

FIGURE No:
 FIGURE 1

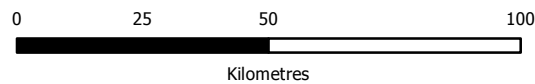
Contains Ordnance Survey data © Crown copyright and database right 2017.





-  Special Protection Areas
-  Special Area of Conservation
-  Ramsar
-  Site of Special Scientific Interest / Area of Special Scientific Interest
-  National Nature Reserve
-  Ancient Woodland Inventory (England & Scotland)
-  Nature Conservation Marine Protected Areas (Scotland)
-  Marine Conservation Zones
-  Biosphere Reserve

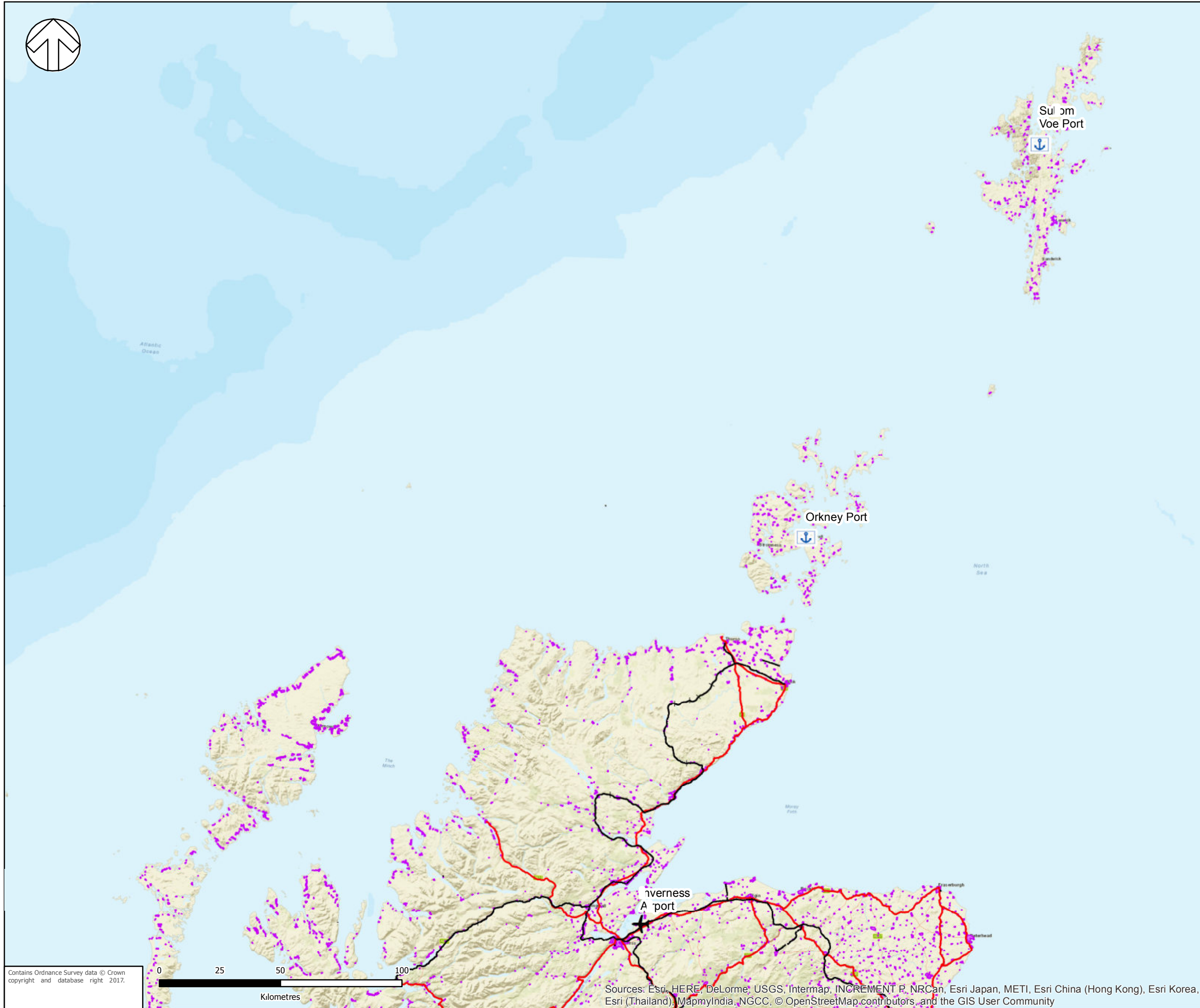
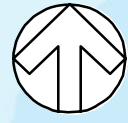
Contains Ordnance Survey data © Crown copyright and database right 2017.



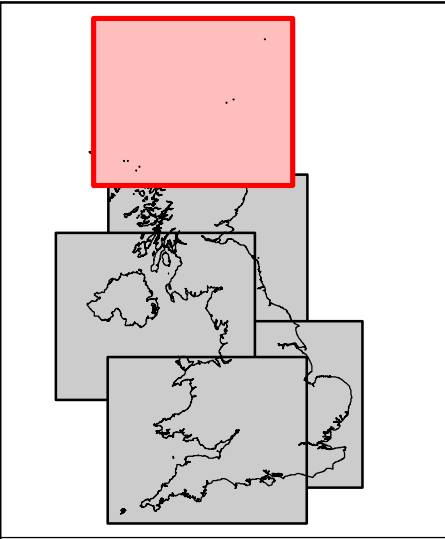

Department for
Business, Energy
& Industrial Strategy

TITLE:
ENERGY AoS SCOPING REPORT
BIODIVERSITY & ECOSYSTEMS
PAGE 5 OF 5

FIGURE No:
FIGURE 1



-  Urban Areas
-  Airport
-  Ports
-  Railway Line
-  Motorway
-  Primary Road

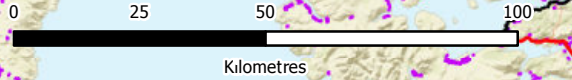


 Department for Business, Energy & Industrial Strategy

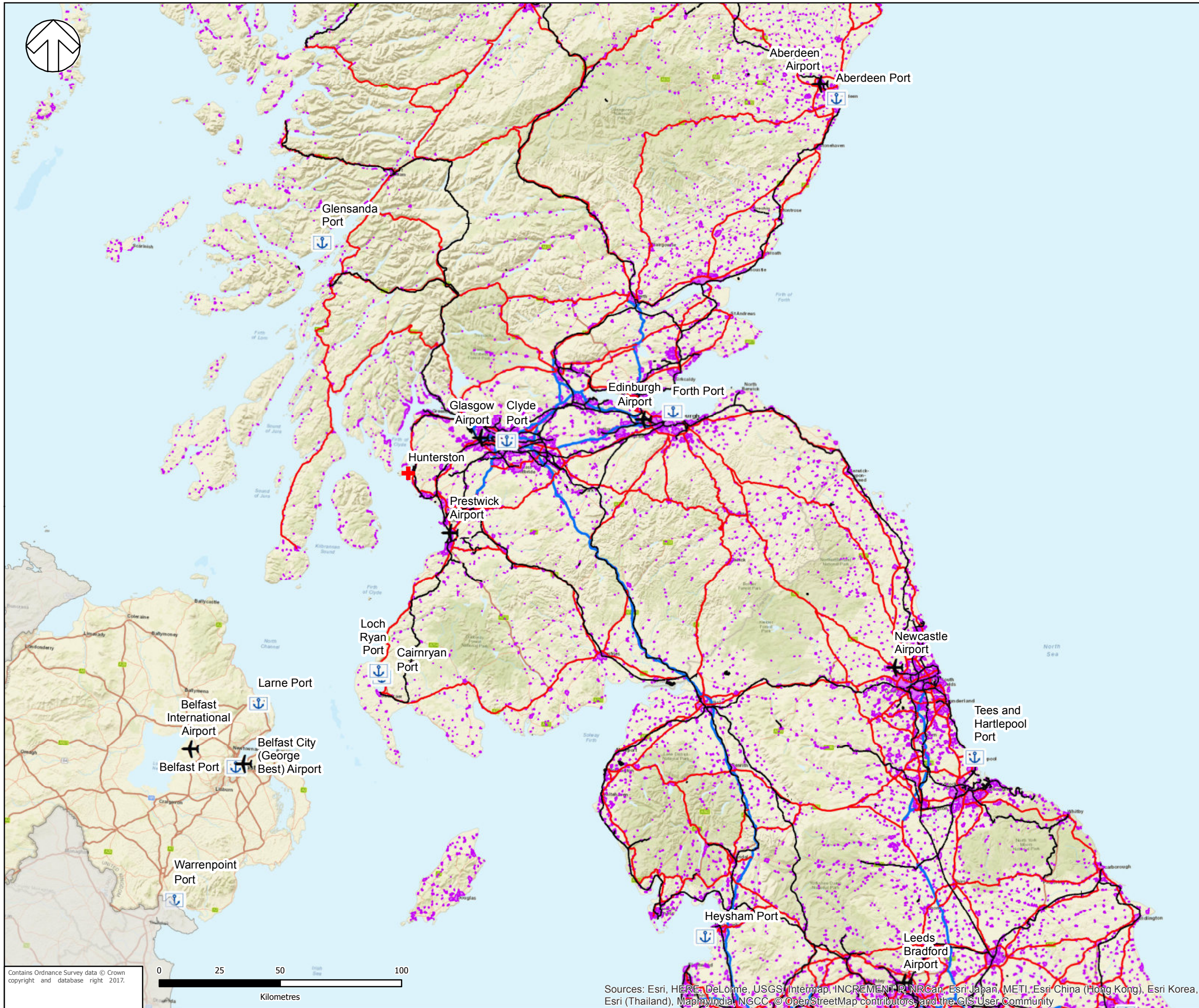
TITLE: ENERGY AoS SCOPING REPORT
INFRASTRUCTURE
PAGE 1 OF 5

FIGURE No:
FIGURE 2

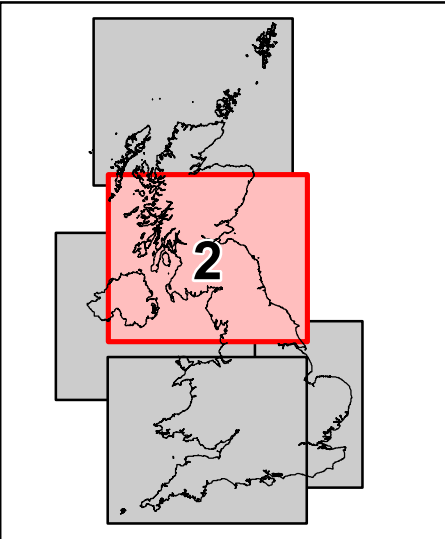
Contains Ordnance Survey data © Crown copyright and database right 2017.



Sources: Esri, HERE, DeLorme, USGS, Intermap, INCREMENT P, NRCan, Esri Japan, METI, Esri China (Hong Kong), Esri Korea, Esri (Thailand), MapmyIndia, NGCC, © OpenStreetMap contributors, and the GIS User Community



-  Urban Areas
-  Airport
-  Ports
-  Railway Line
-  Motorway
-  Primary Road

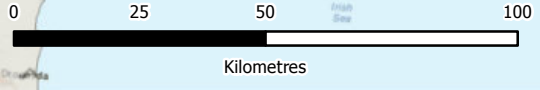


 Department for Business, Energy & Industrial Strategy

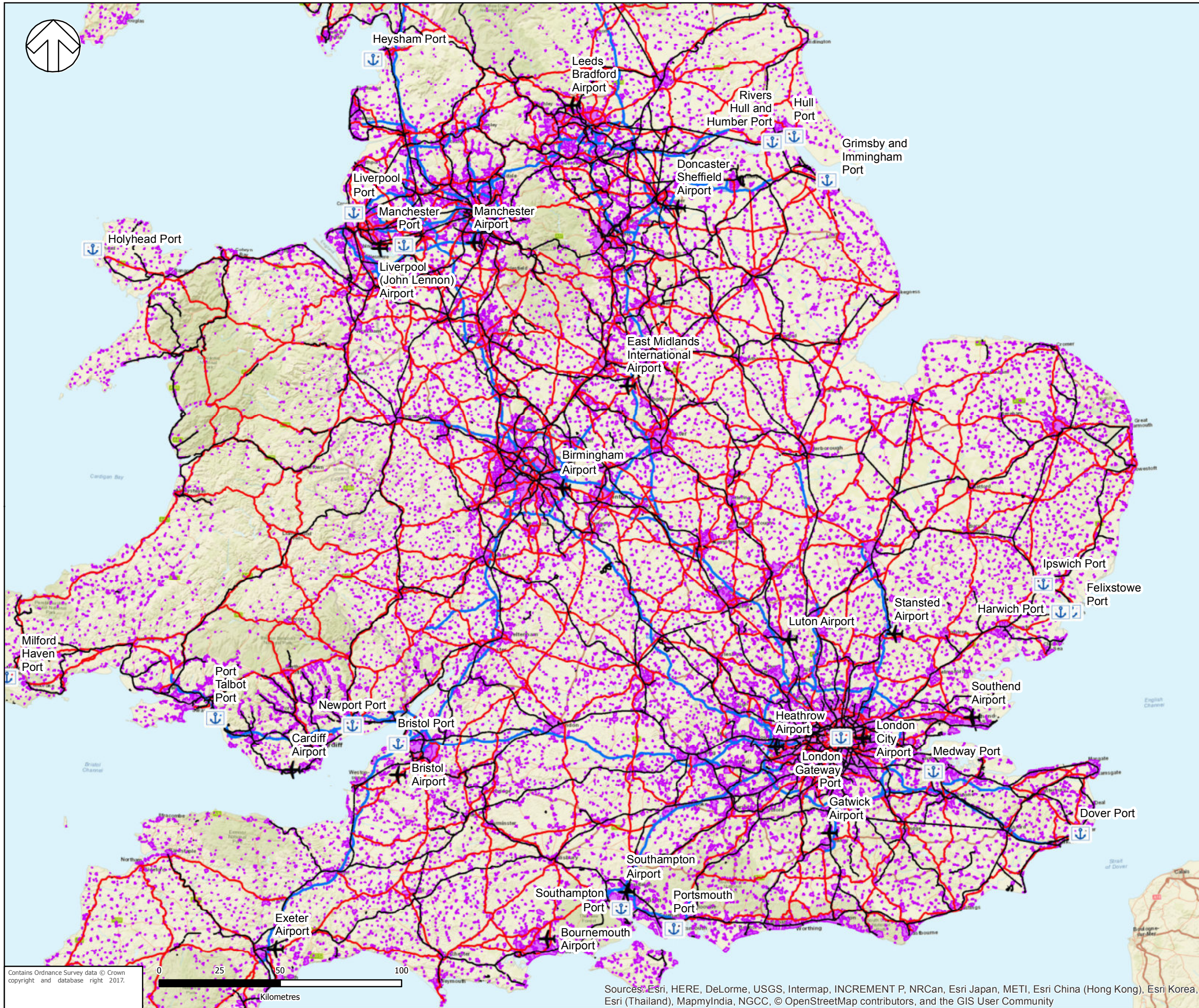
TITLE: ENERGY AoS SCOPING REPORT
INFRASTRUCTURE
PROJECTS

FIGURE No:
FIGURE 2
FIGURE X

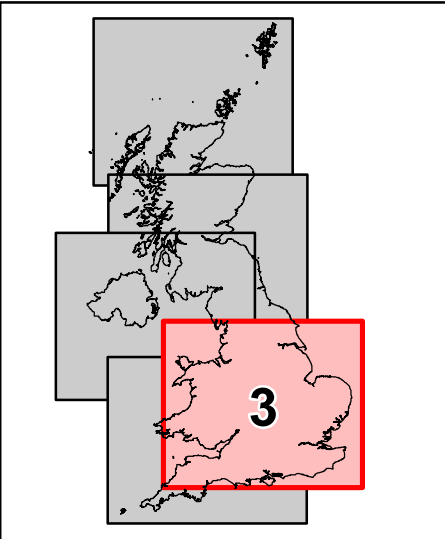
Contains Ordnance Survey data © Crown copyright and database right 2017.



Sources: Esri, HERE, DeLorme, USGS, Intermap, INCREMENT P, NRCan, Esri Japan, METI, Esri China (Hong Kong), Esri Korea, Esri (Thailand), MapmyIndia, NGCC, © OpenStreetMap contributors, and the GIS User Community



-  Urban Areas
-  Airport
-  Ports
-  Railway Line
-  Motorway
-  Primary Road

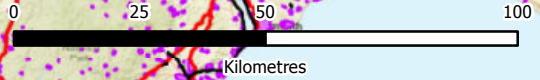


 Department for Business, Energy & Industrial Strategy

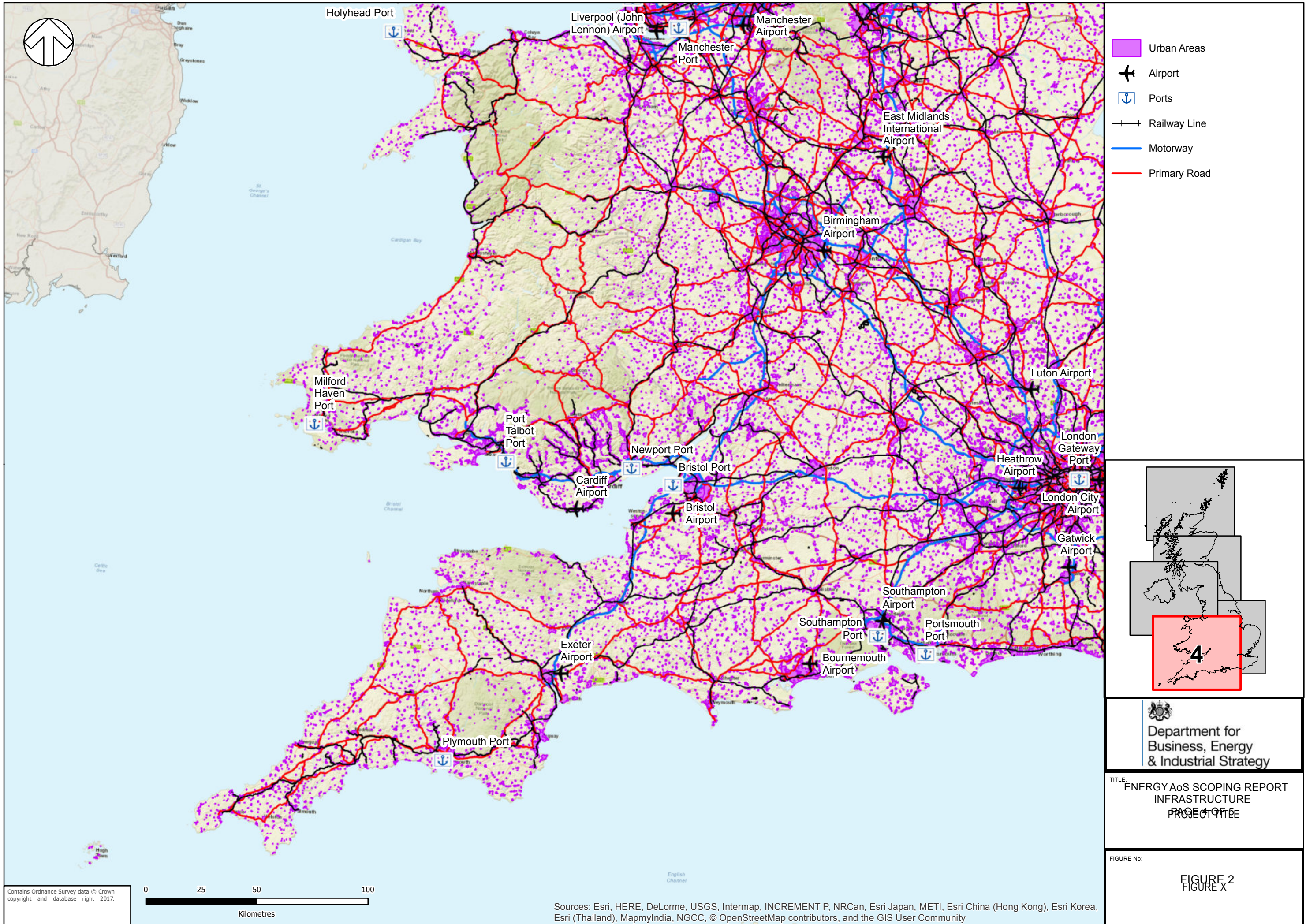
TITLE: ENERGY AoS SCOPING REPORT
INFRASTRUCTURE
PROJECTIONS

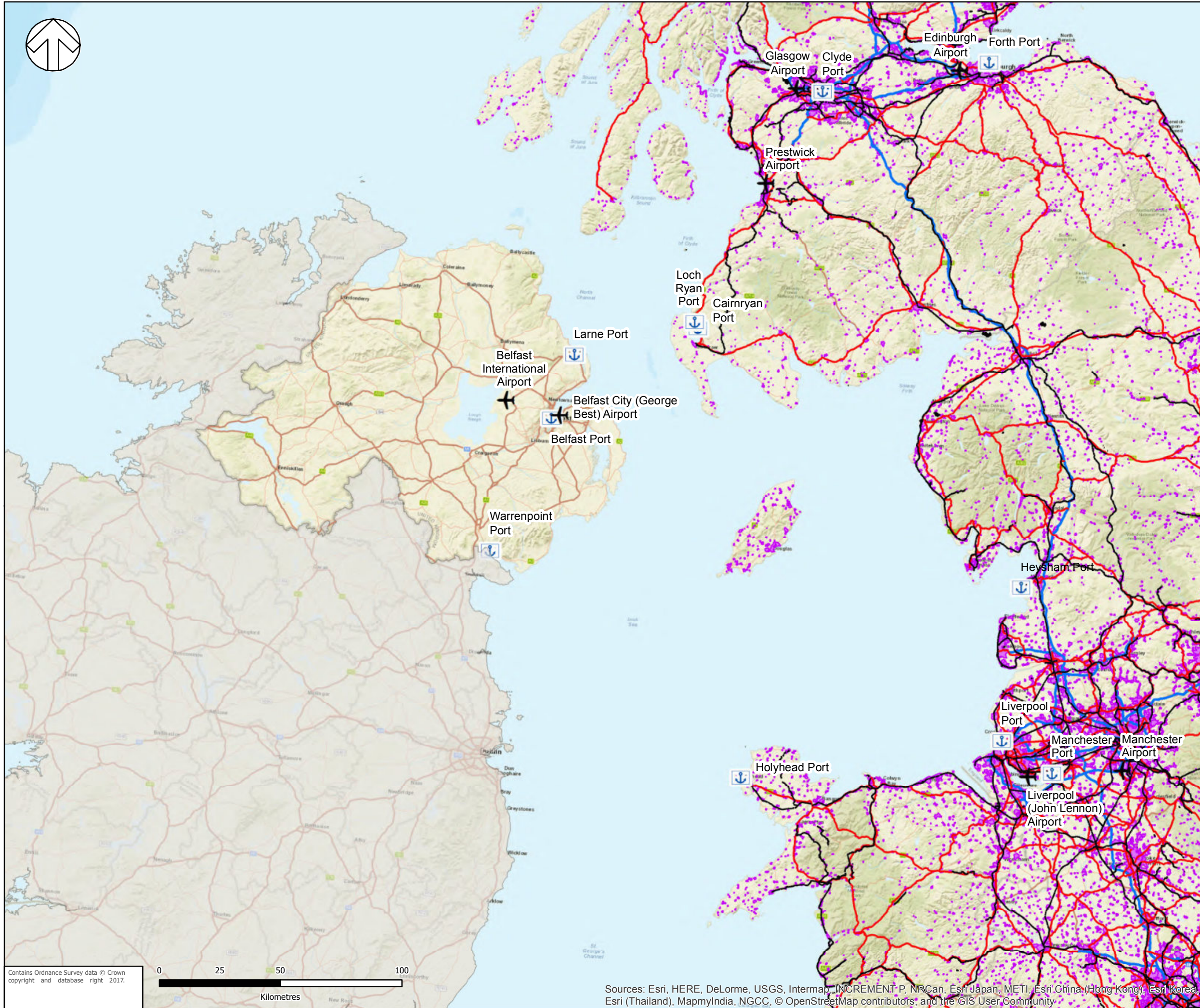
FIGURE No:
FIGURE 2
FIGURE X

Contains Ordnance Survey data © Crown copyright and database right 2017.

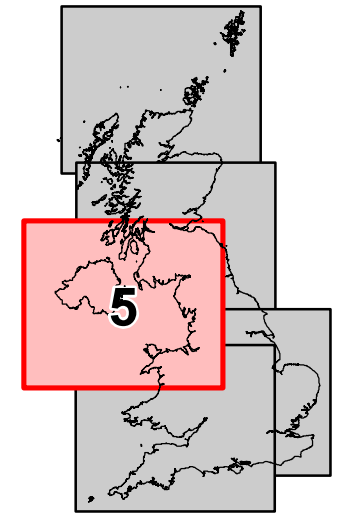


Sources: Esri, HERE, DeLorme, USGS, Intermap, INCREMENT P, NRCan, Esri Japan, METI, Esri China (Hong Kong), Esri Korea, Esri (Thailand), MapmyIndia, NGCC, © OpenStreetMap contributors, and the GIS User Community





- Urban Areas
- Airport
- Ports
- Railway Line
- Motorway
- Primary Road





 Department for
 Business, Energy
 & Industrial Strategy

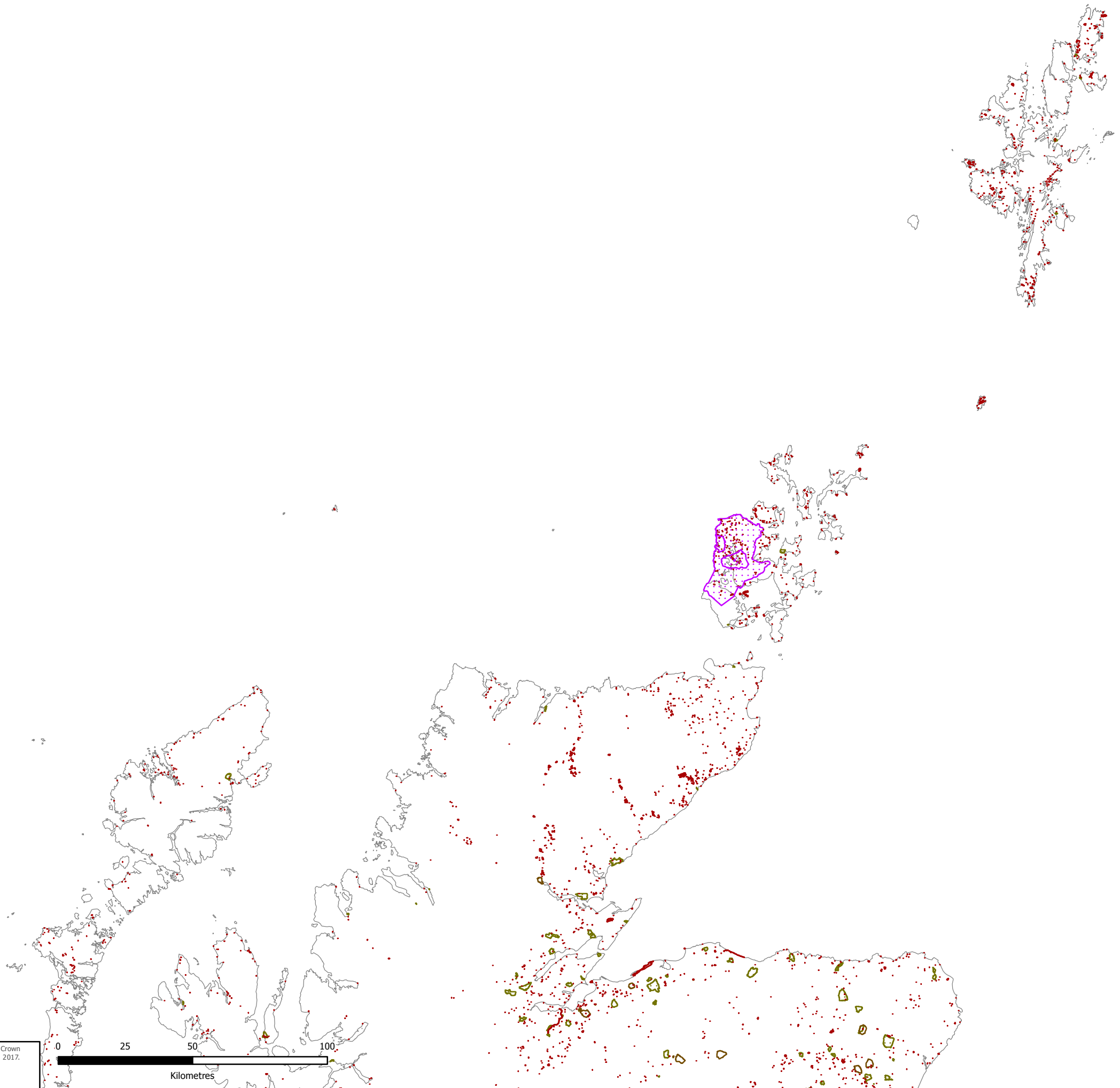
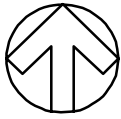
TITLE: ENERGY AoS SCOPING REPORT
 INFRASTRUCTURE
 PROJECTS

FIGURE No:
FIGURE 2
FIGURE X

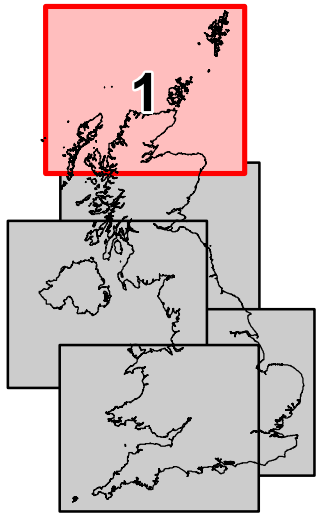
Contains Ordnance Survey data © Crown copyright and database right 2017.



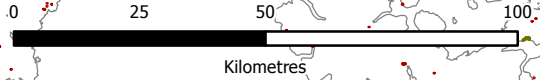
Sources: Esri, HERE, DeLorme, USGS, Intermap, INCREMENT P, NRCan, Esri Japan, METI, Esri China (Hong Kong), Esri Korea, Esri (Thailand), MapmyIndia, NGCC, © OpenStreetMap contributors, and the GIS User Community



- Protected Wrecks (England)
- World Heritage Site
- Scheduled Monument (England & Scotland)
- Historic Battlefields (England & Scotland)
- Parks and Gardens (England & Scotland)



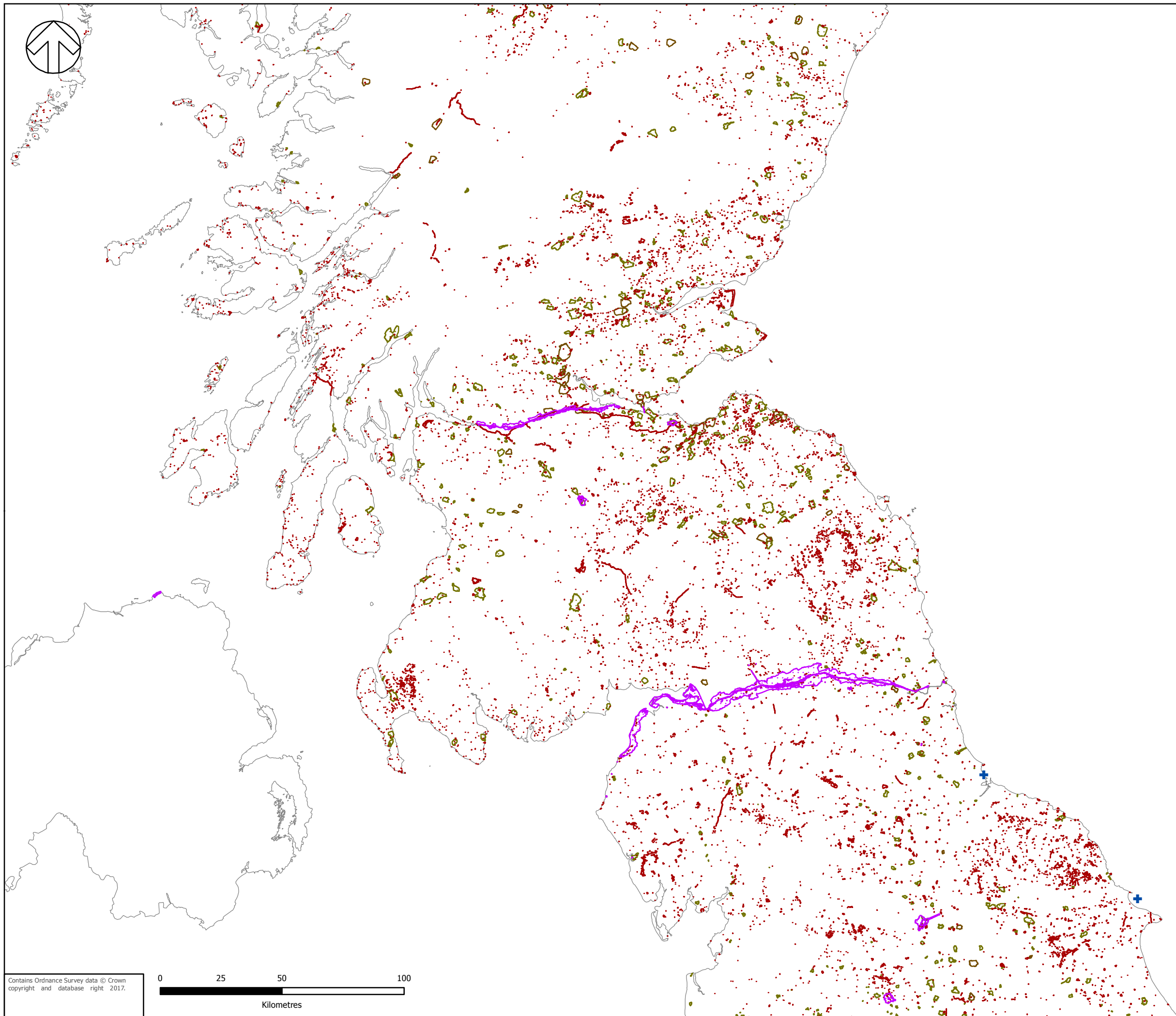
Contains Ordnance Survey data © Crown copyright and database right 2017.



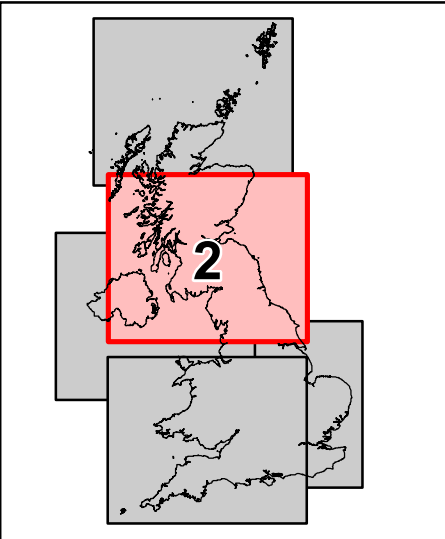
Department for Business, Energy & Industrial Strategy

TITLE: ENERGY AoS SCOPING REPORT
HISTORIC ENVIRONMENT
PROTECTION

FIGURE No:
FIGURE 3
FIGURE X



-  Protected Wrecks (England)
-  World Heritage Site
-  Scheduled Monument (England & Scotland)
-  Historic Battlefields (England & Scotland)
-  Parks and Gardens (England & Scotland)

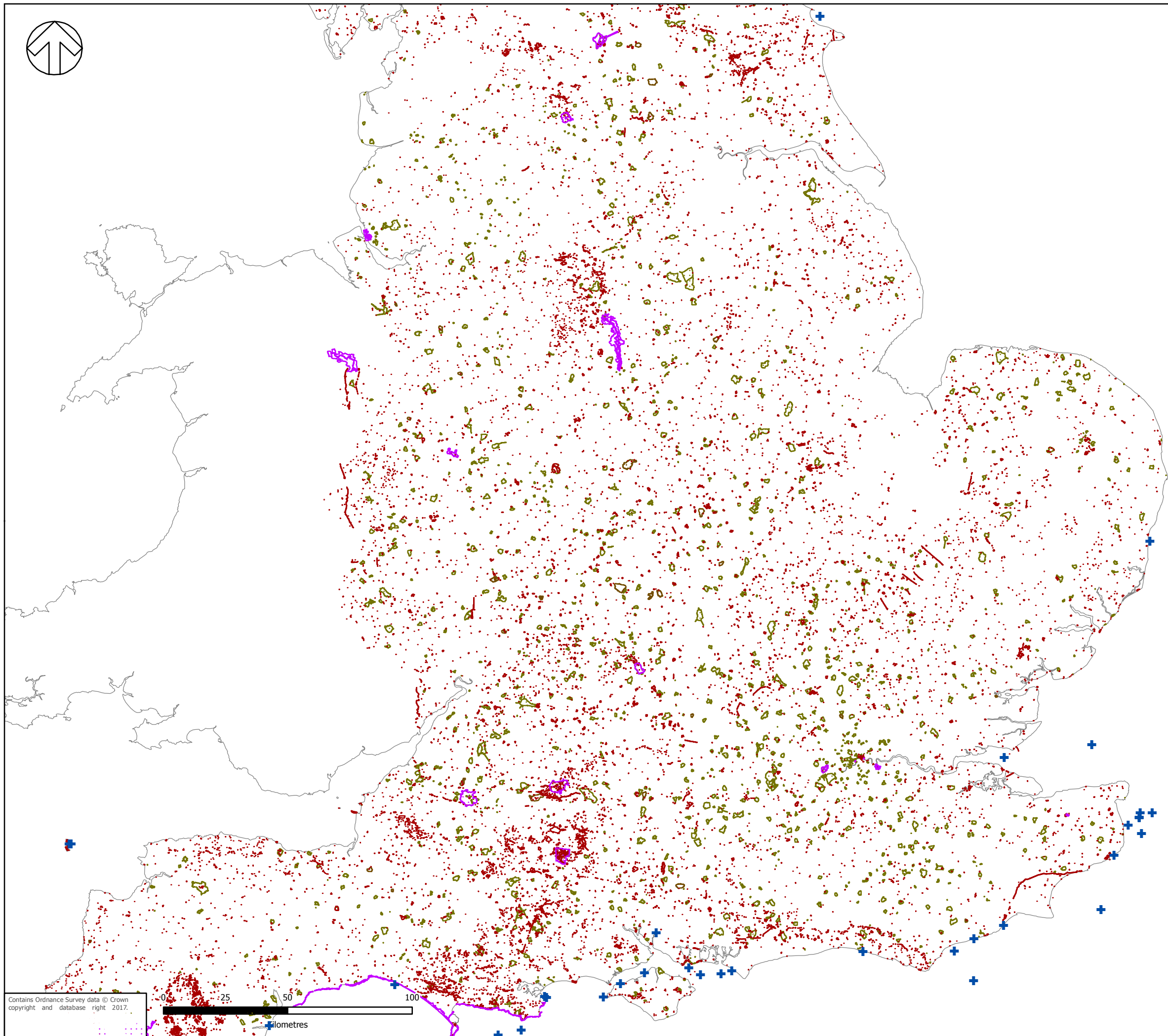
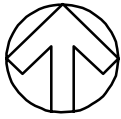


 Department for Business, Energy & Industrial Strategy

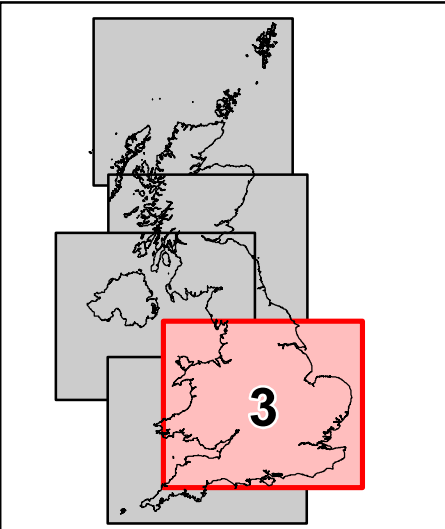
TITLE: ENERGY AoS SCOPING REPORT
HISTORIC ENVIRONMENT
PROJECT

FIGURE No: **FIGURE 3**
FIGURE X

Contains Ordnance Survey data © Crown copyright and database right 2017.



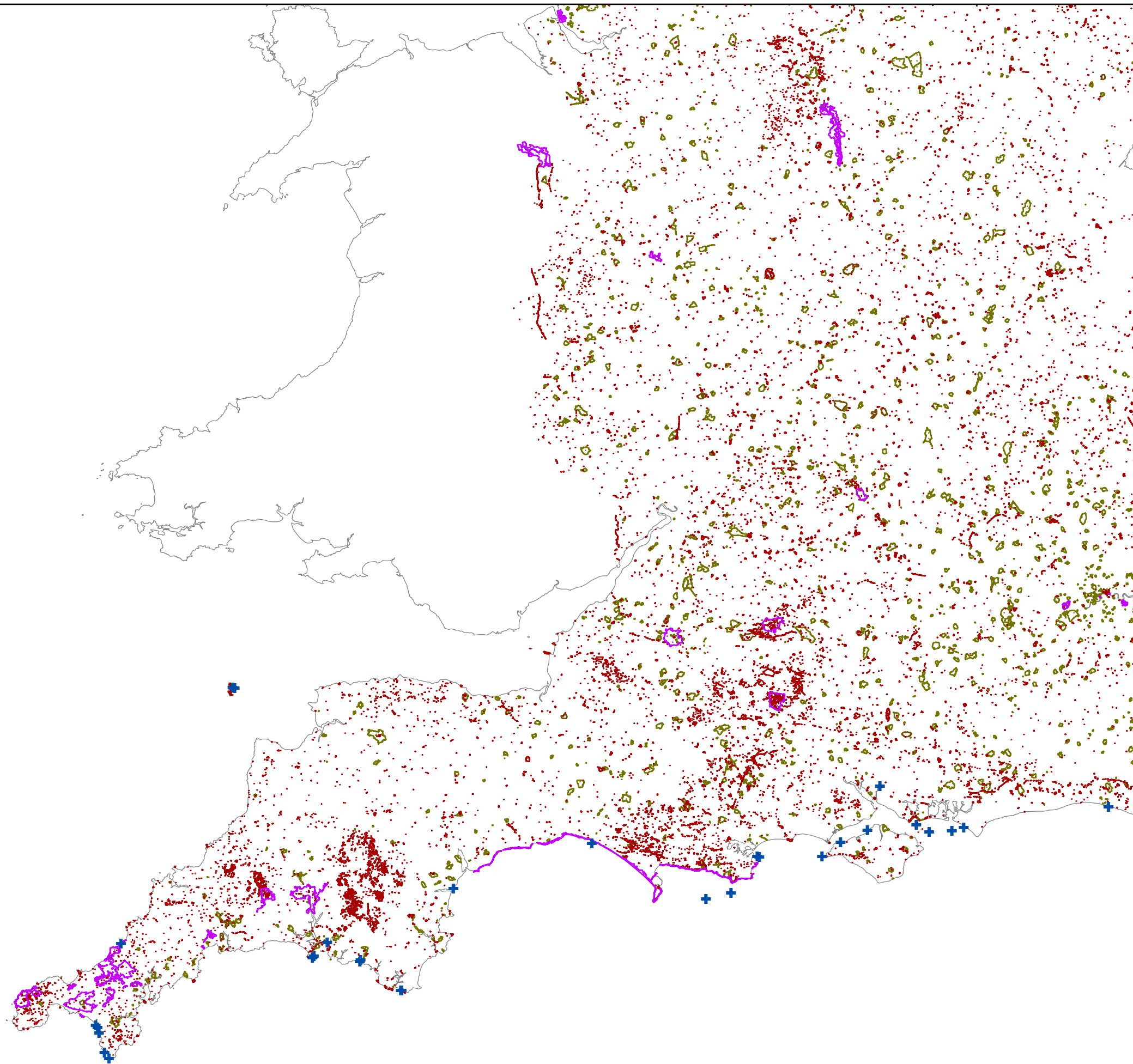
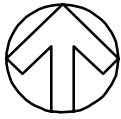
- + Protected Wrecks (England)
- World Heritage Site
- Scheduled Monument (England & Scotland)
- Historic Battlefields (England & Scotland)
- Parks and Gardens (England & Scotland)



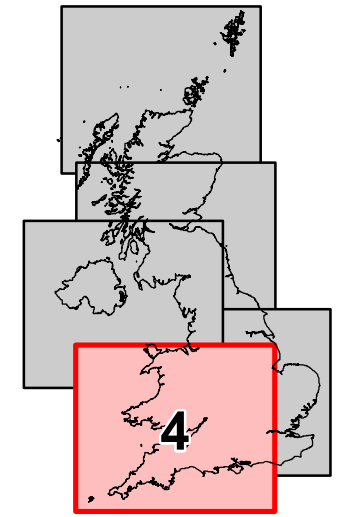
Department for
Business, Energy
& Industrial Strategy

TITLE: ENERGY AoS SCOPING REPORT
HISTORIC ENVIRONMENT
PROTECTION

FIGURE No:
FIGURE 3
FIGURE X



- + Protected Wrecks (England)
- World Heritage Site
- Scheduled Monument (England & Scotland)
- Historic Battlefields (England & Scotland)
- Parks and Gardens (England & Scotland)



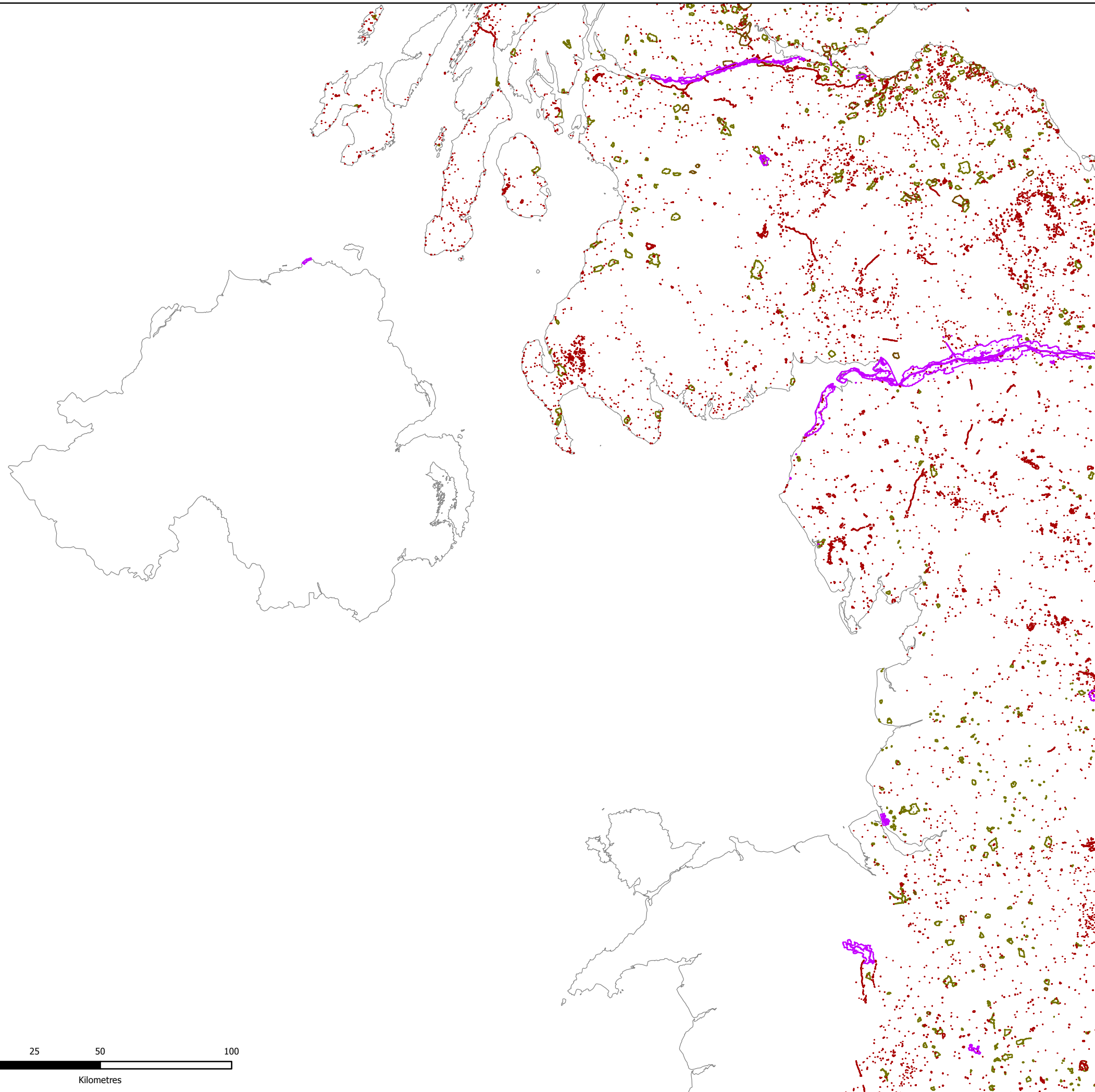
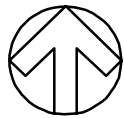
Department for
Business, Energy
& Industrial Strategy

TITLE:
ENERGY AoS SCOPING REPORT
HISTORIC ENVIRONMENT
PROTECTION

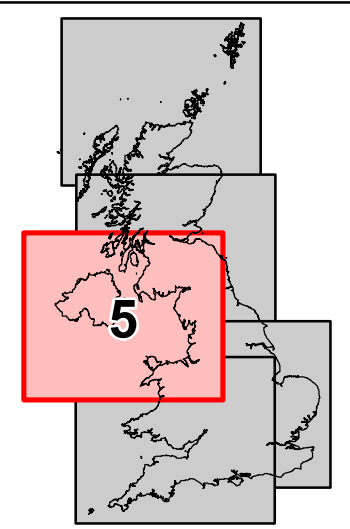
FIGURE No:
FIGURE 3
FIGURE X

Contains Ordnance Survey data © Crown copyright and database right 2017.





- Protected Wrecks (England)
- World Heritage Site
- Scheduled Monument (England & Scotland)
- Historic Battlefields (England & Scotland)
- Parks and Gardens (England & Scotland)



Department for Business, Energy & Industrial Strategy

TITLE: ENERGY AoS SCOPING REPORT
HISTORIC ENVIRONMENT
PROTECTIVE

FIGURE No: **FIGURE 3**
FIGURE X

Contains Ordnance Survey data © Crown copyright and database right 2017.

