



14 April 2021

Year: 2021 Week: 14

In This Issue:

- Key messages.
- Diagnostic indicators at a glance.
- Weekly report statistics.
- Total attendances.
- Respiratory.
- Gastrointestinal.
- Cardiac.
- Notes and caveats.
- Acknowledgements.

Key messages

Data to: 04 April 2021

COVID-19-like emergency department attendances continued to decrease during week 14 (figure 3). Acute respiratory infection and bronchiolitis attendances remained elevated in infants under 1 year during week 14 (figure 5a).

Note: during the COVID-19 pandemic, patients with COVID-19 symptoms are generally advised to initially access a COVID-19 test through the national COVID-19 testing programme. This is likely to result in lower numbers of patients accessing health advice as monitored through syndromic surveillance systems. Syndromic data should therefore be interpreted with some caution and in the context of other COVID-19 monitoring data sources.

Please see [notes and caveats](#) for information about the ED syndromic indicators including important caveats around the interpretation.

Diagnostic indicators at a glance:

Further details on the syndromic indicators reported can be found on page 10.

Indicator	Current trend	Level
COVID-19-like	decreasing	-
Respiratory	decreasing	below baseline
Acute Respiratory Infection	decreasing	below baseline
Bronchiolitis	no trend	below baseline
Influenza-like Illness	no trend	below baseline
Pneumonia	increasing	below baseline
Asthma	increasing	below baseline
Gastrointestinal	increasing	similar to baseline
Gastroenteritis	no trend	below baseline
Cardiac	no trend	above baseline
Myocardial Ischaemia	no trend	similar to baseline
Alcohol intoxication	no trend	similar to baseline

EDSSS weekly report statistics

Only Type 1 EDs meeting the weekly reporting criteria are included (see page 10 for details).

*max EDs included across full time period reported in charts, individual days may include fewer EDs.

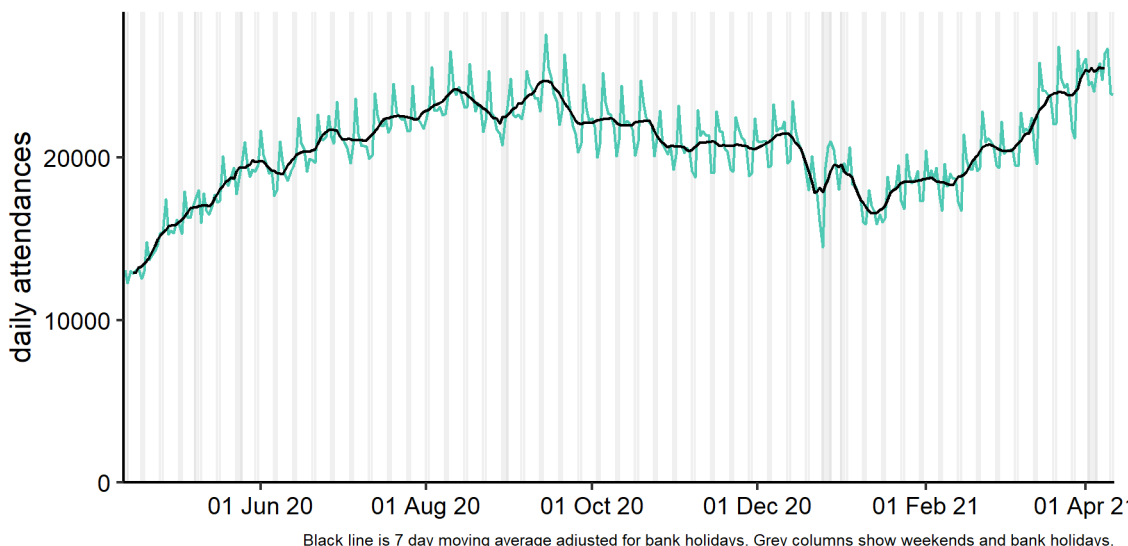
Date	Total	Diagnoses Coded		Type 1 EDs
	Attendances	Number	%	Included
05/04/2021	25,159	18,532	73.7%	106
06/04/2021	25,812	18,618	72.1%	106
07/04/2021	24,766	17,417	70.3%	106
08/04/2021	26,450	18,553	70.1%	106
09/04/2021	26,696	19,183	71.9%	106
10/04/2021	23,937	17,272	72.2%	106
11/04/2021	23,856	17,010	71.3%	106
Total	176,676	126,585	71.6%	(max)* 106

1: Total attendances.

Daily number of total attendances recorded, across the EDSSS network.

(see page 6 for ED inclusion criteria).

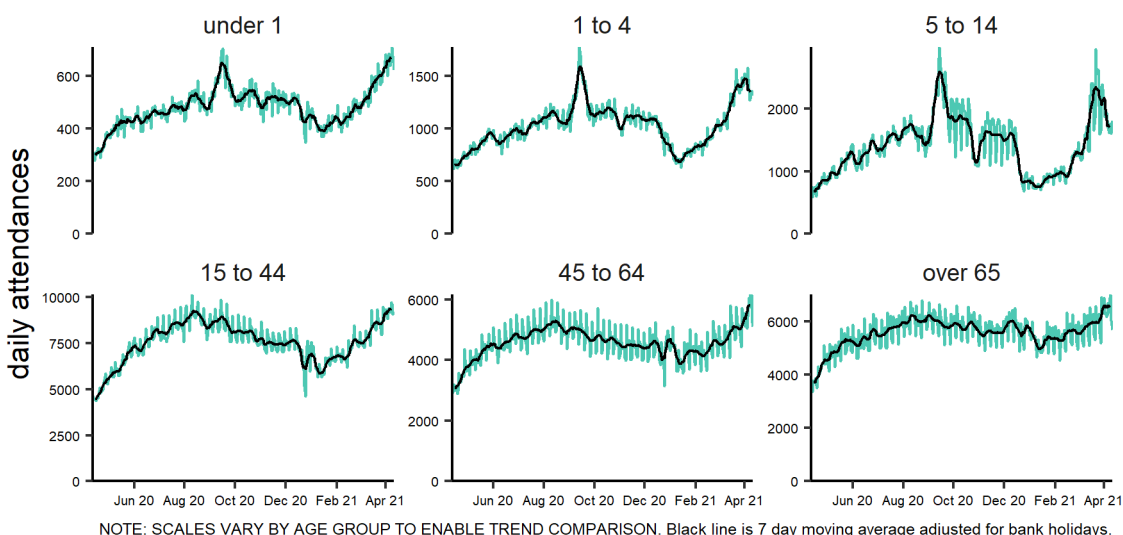
Total attendances 12/04/2020 - 11/04/2021



2a: Daily attendances by age: numbers.

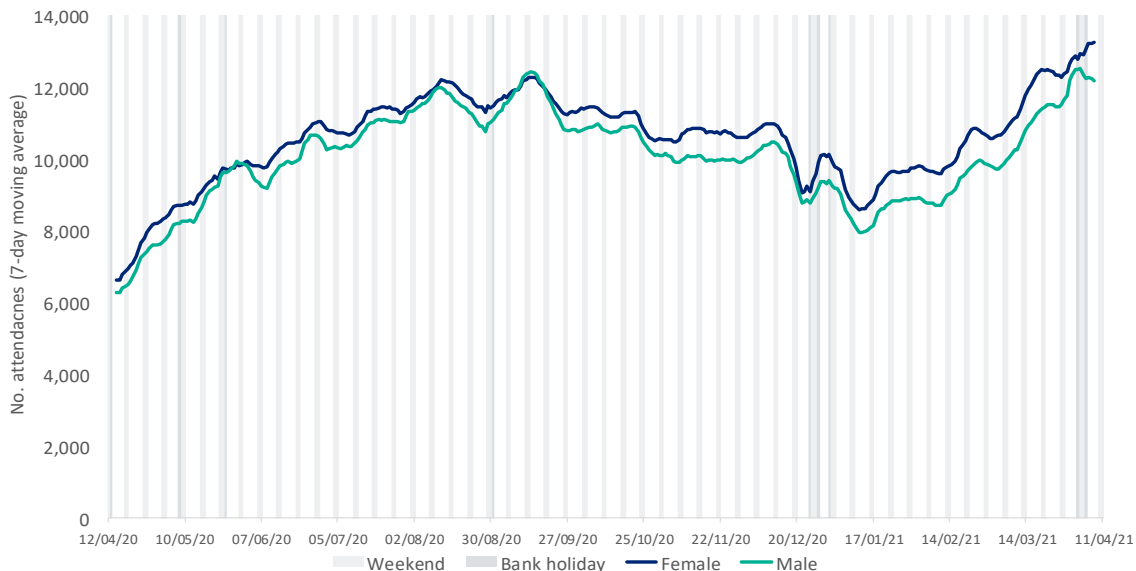
Daily number and 7-day moving average of total attendances, by age group.

total attendances by age group (years) 12/04/2020 - 11/04/2021



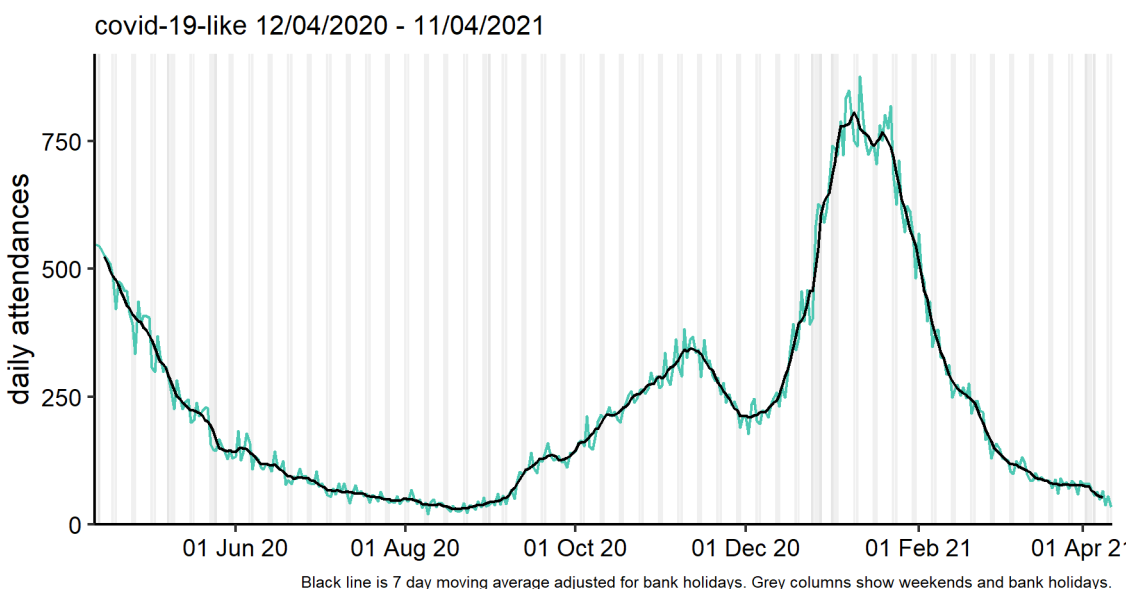
2b: Daily attendances by gender: numbers

Daily number of total attendances by gender, recorded across the EDSSS network (shown as a 7-day moving average). Please note: indeterminate gender is not shown due to small numbers



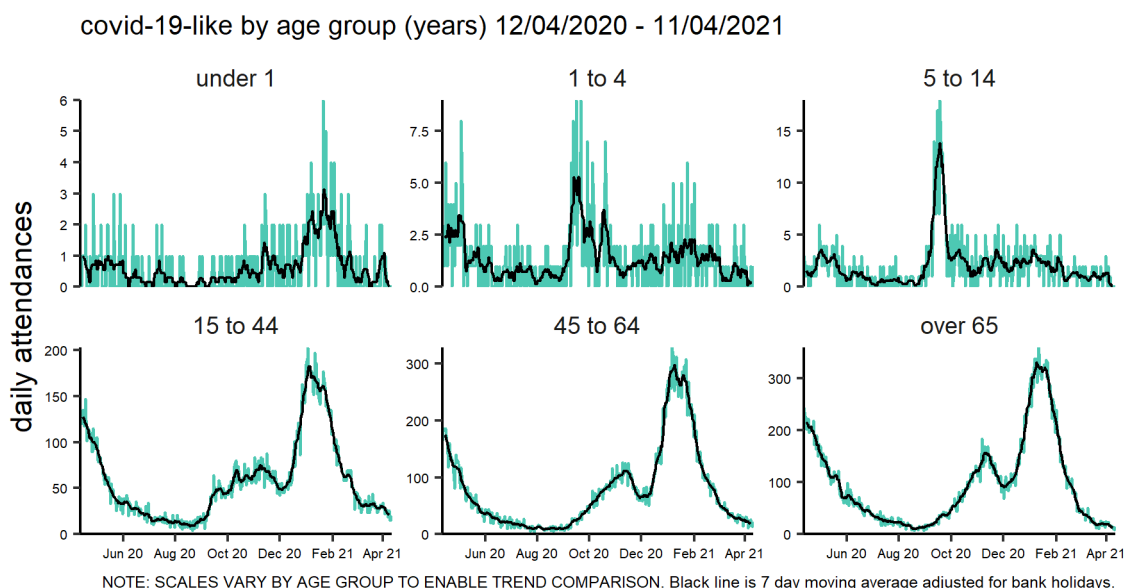
3: COVID-19-like.

Daily number of attendances recorded as COVID-19-like attendances across the EDSSS network.



3a: COVID-19-like by age group.

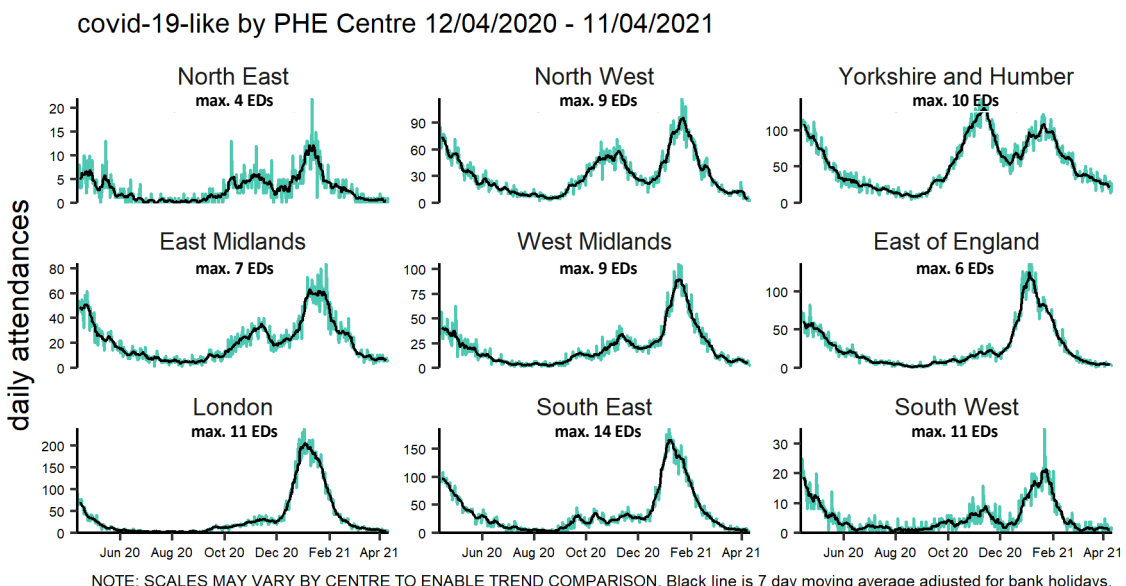
Daily number and 7 day moving average of COVID-19-like attendances within each age group.



3b: COVID-19-like by PHE Centre

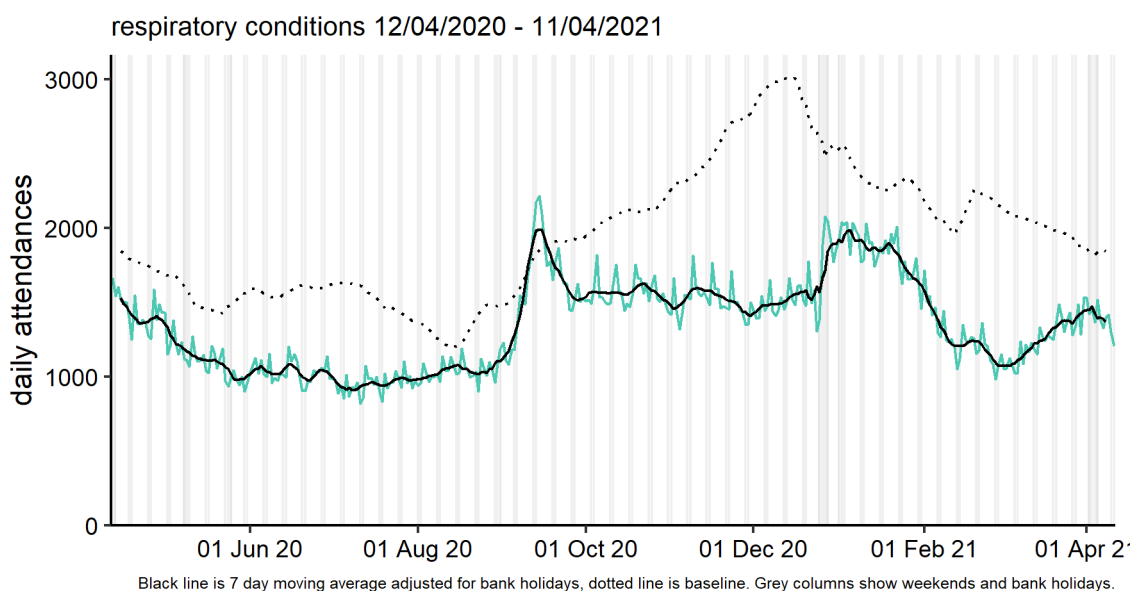
Daily attendances and 7 day moving average of COVID-19-like attendances within each PHE Centre (with the maximum number of EDs included in each time series).

Please see ['notes and caveats'](#) for information on how EDs are selected for inclusion each week.



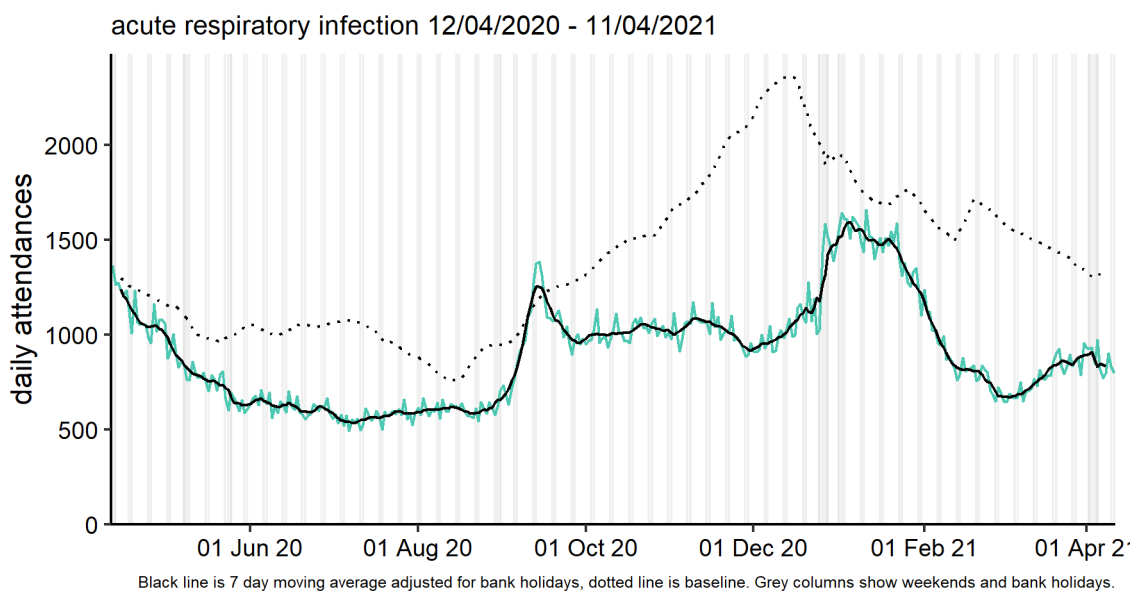
4: Respiratory.

Daily number of attendances recorded as respiratory attendances across the EDSSS network.



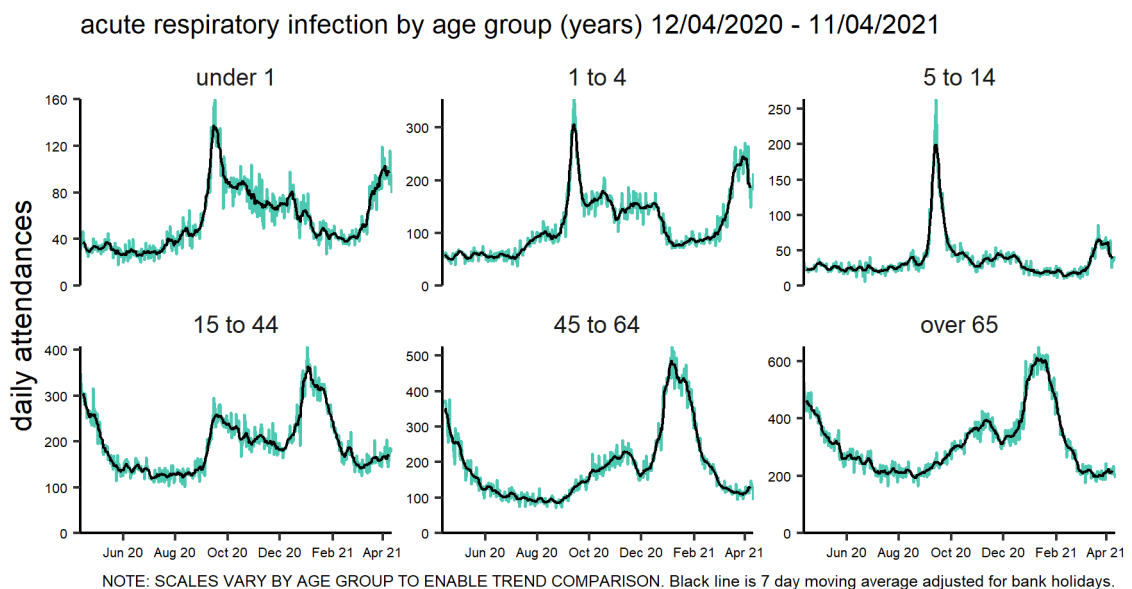
5: Acute Respiratory Infection.

Daily number of all attendances recorded as acute respiratory infection attendances across the EDSSS network.



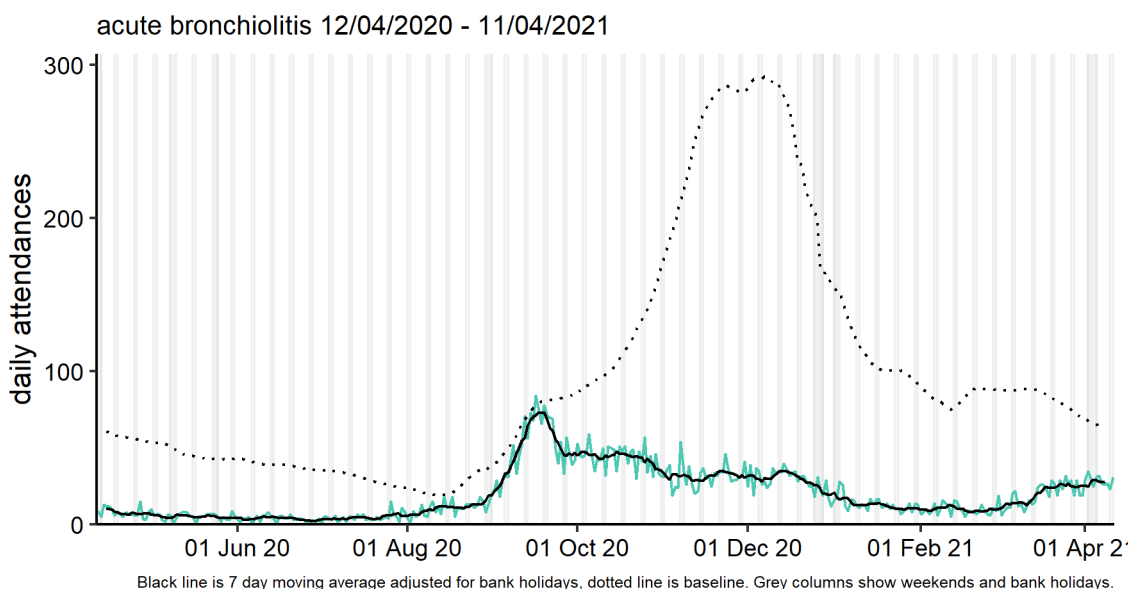
5a: Acute Respiratory Infection by age group.

7 day moving average of ARI attendances within each age group.



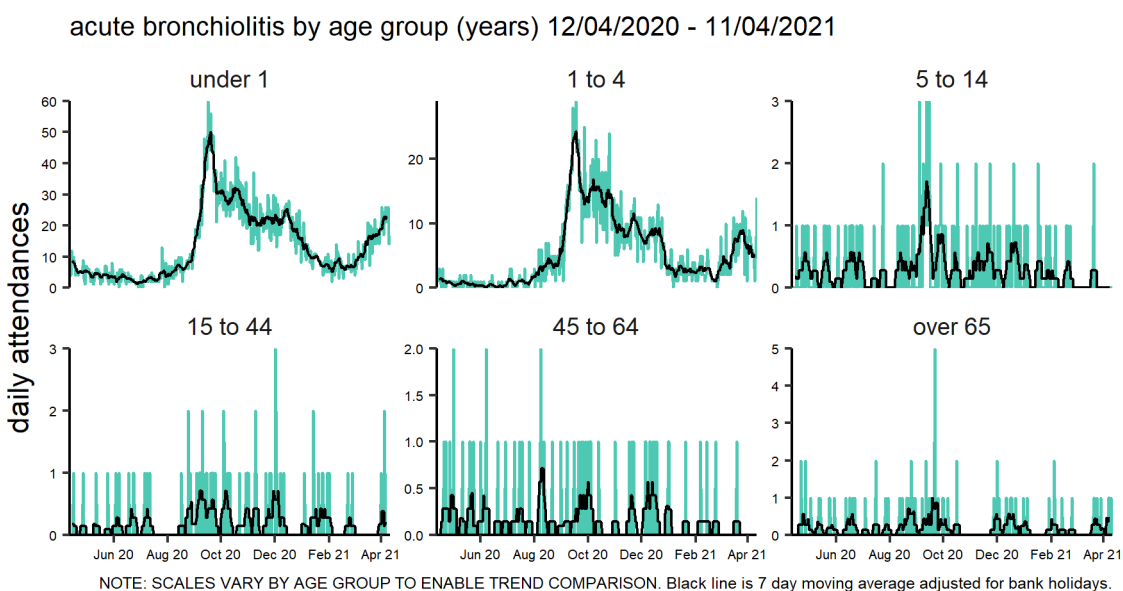
6: Bronchiolitis/bronchitis.

Daily number of attendances recorded as bronchiolitis/ acute bronchitis attendances across the EDSSS network.



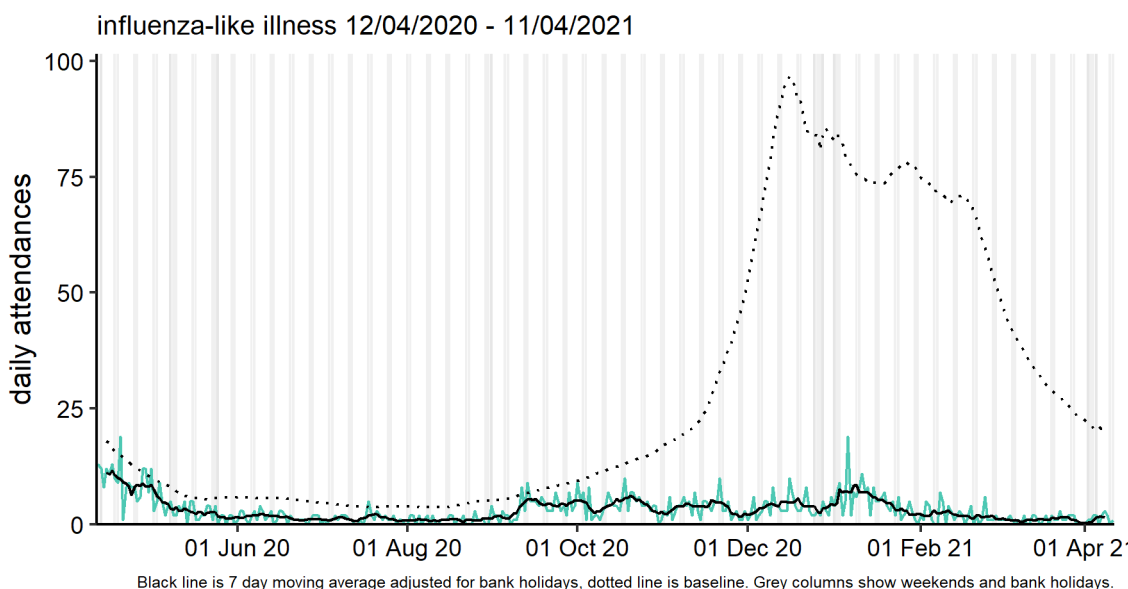
6a: Bronchiolitis/bronchitis by age group

7 day moving average of bronchiolitis/ bronchitis attendances within each age group.



7: Influenza-like illness.

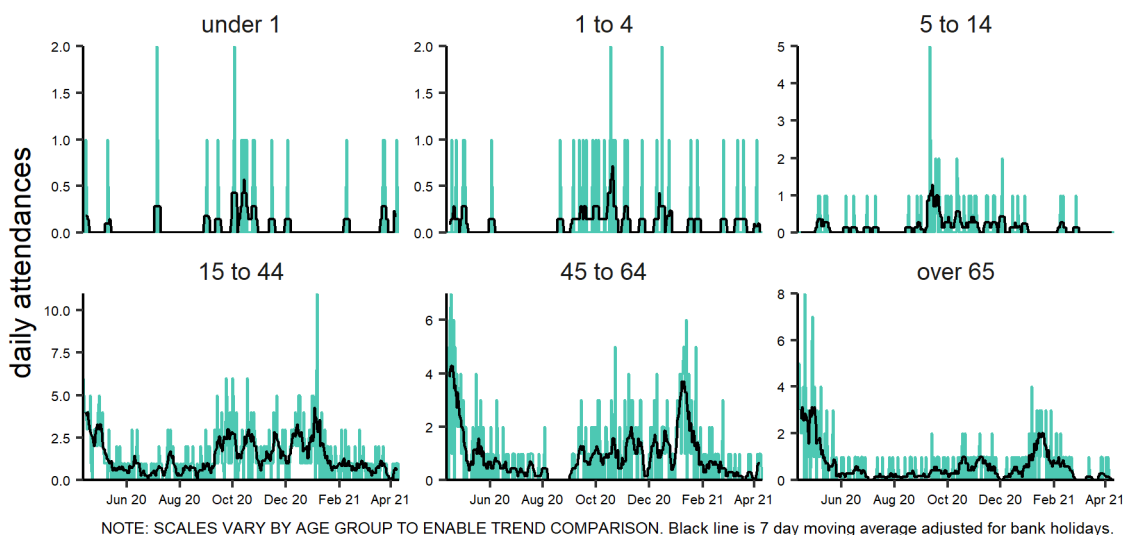
Daily number of attendances recorded as influenza-like illness attendances across the EDSSS network.



7a: Influenza-like illness by age group

7 day moving average of ILI attendances within each age group.

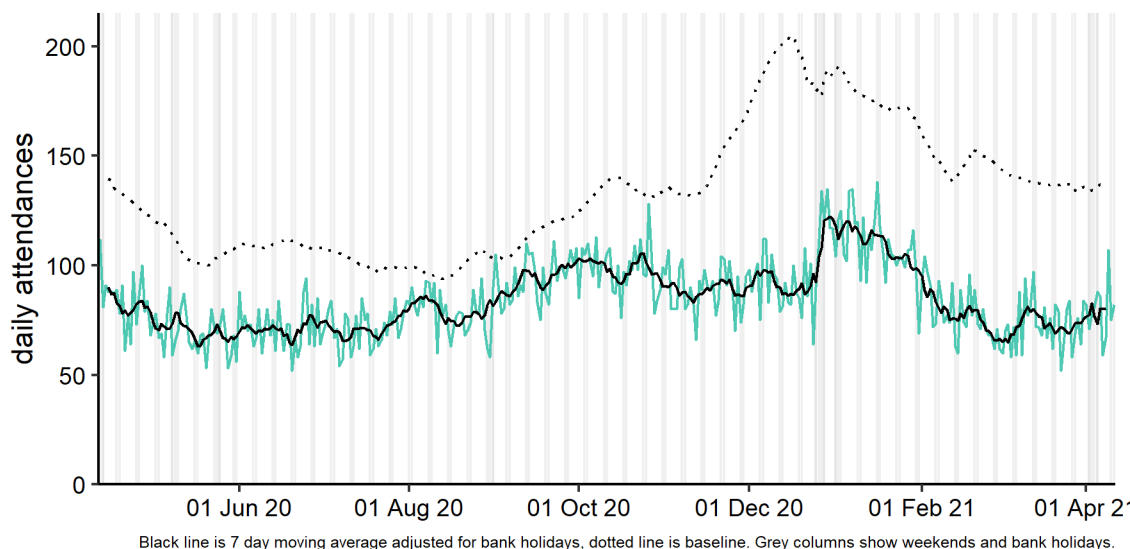
influenza-like illness by age group (years) 12/04/2020 - 11/04/2021



8: Pneumonia.

Daily number of attendances recorded as pneumonia attendances across the EDSSS network.

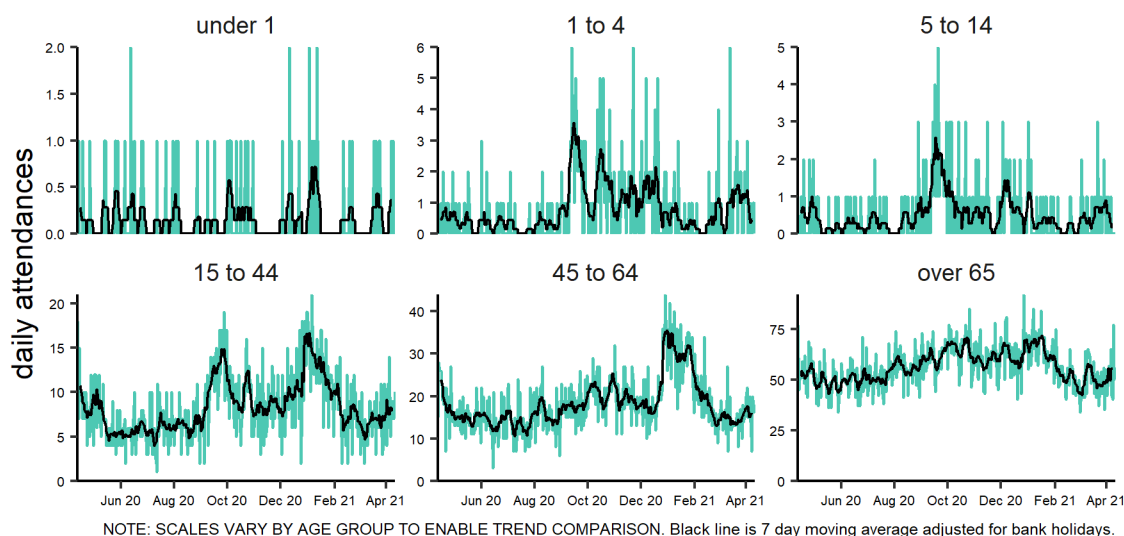
pneumonia 12/04/2020 - 11/04/2021



8a: Pneumonia by age group.

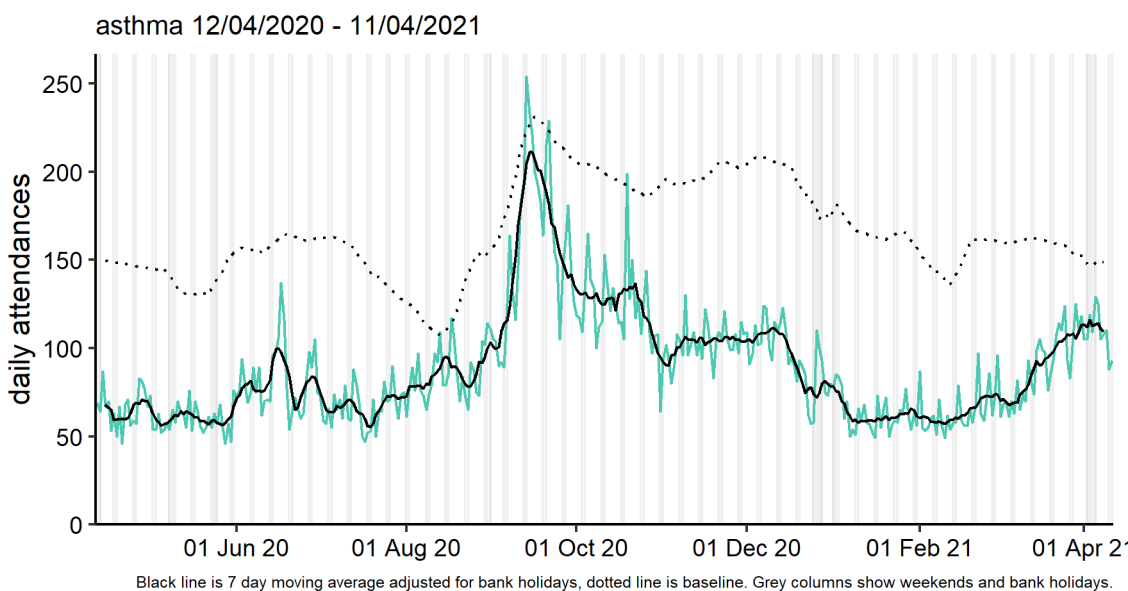
7 day moving average of pneumonia attendances within each age group.

pneumonia by age group (years) 12/04/2020 - 11/04/2021



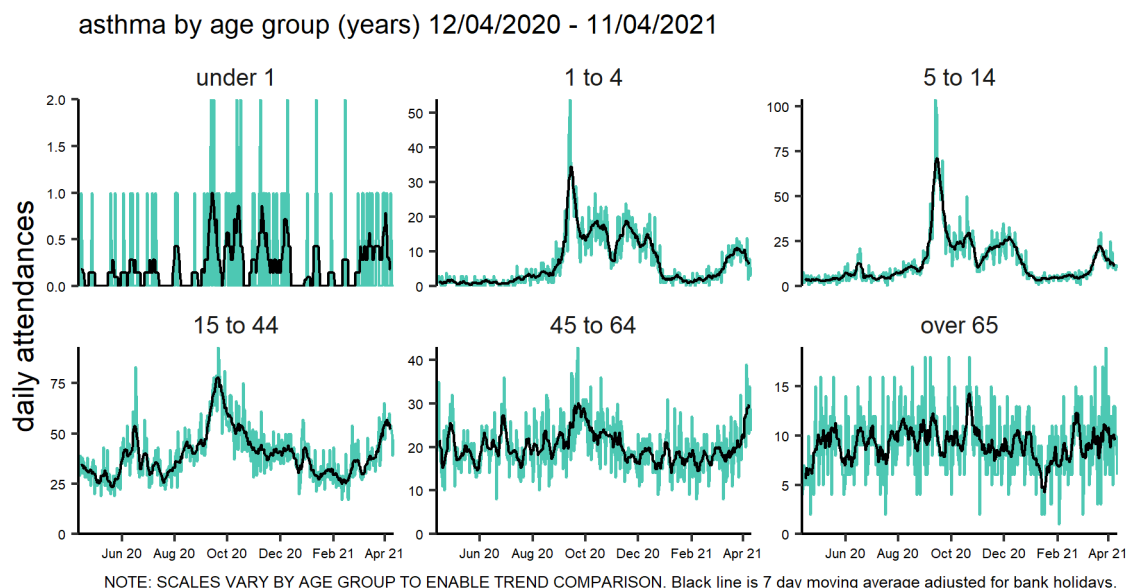
9: Asthma.

Daily number of attendances recorded as asthma/wheeze/difficulty breathing attendances across the EDSSS network.



9a: Asthma by age group.

7 day moving average of asthma attendances within each age group.

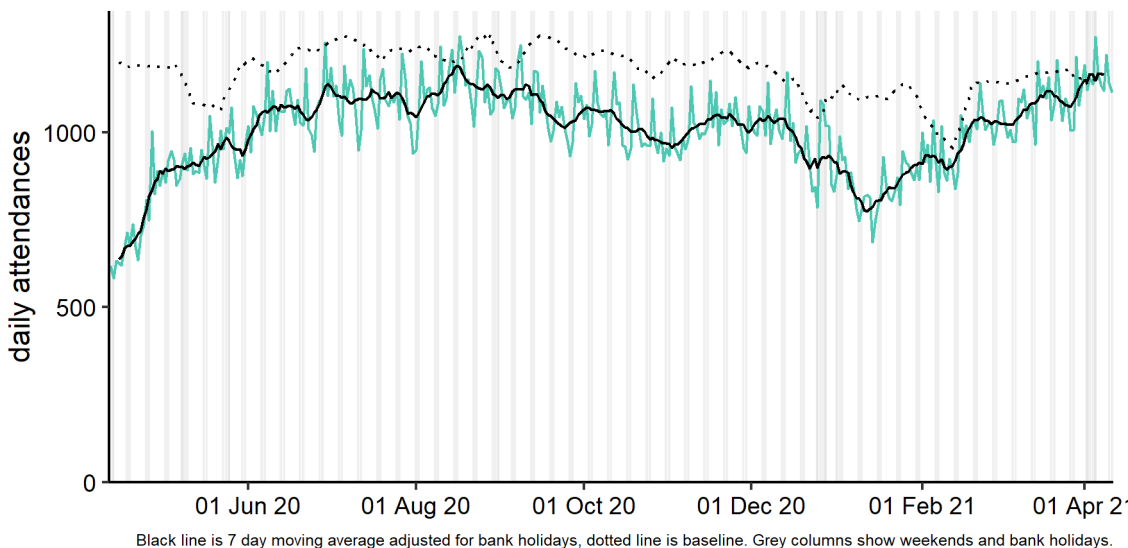


Intentionally left blank

10: Gastrointestinal.

Daily number of attendances recorded as gastrointestinal across the EDSSS network.

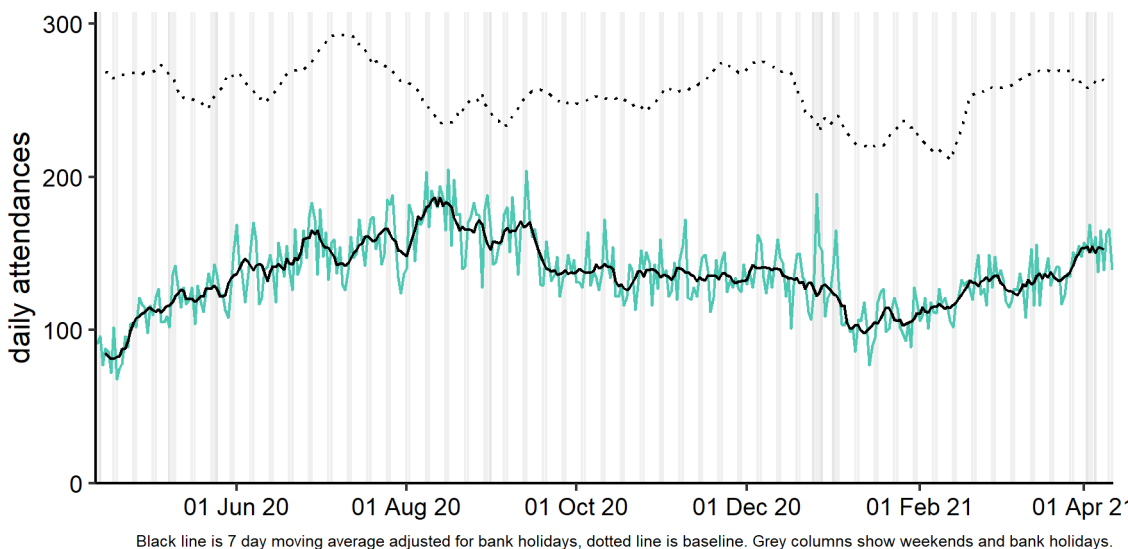
gastrointestinal conditions 12/04/2020 - 11/04/2021



11: Gastroenteritis

Daily number of attendances recorded as gastroenteritis across the EDSSS network.

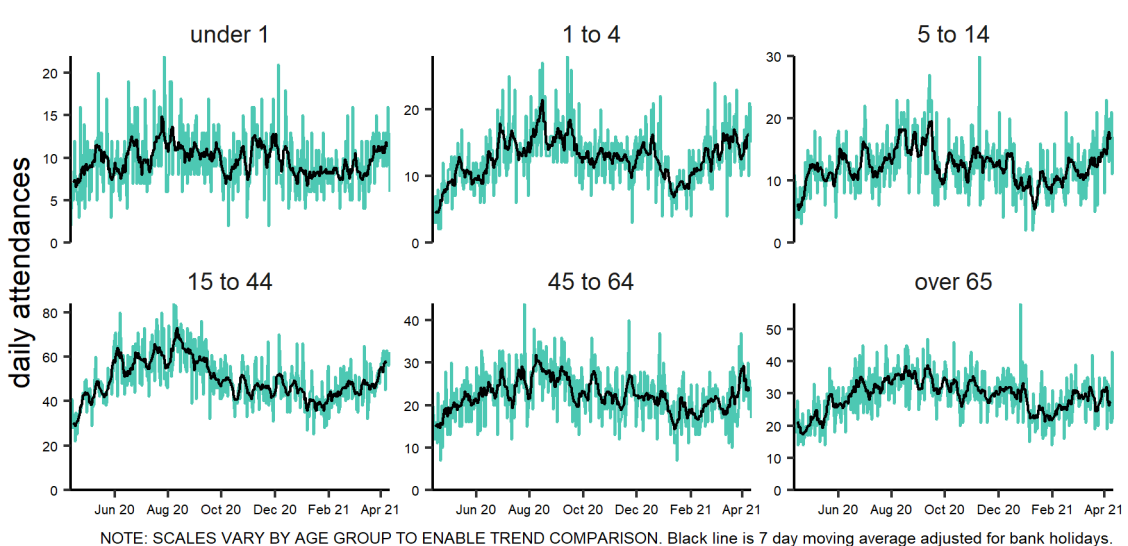
gastroenteritis 12/04/2020 - 11/04/2021



11a: Gastroenteritis by age group.

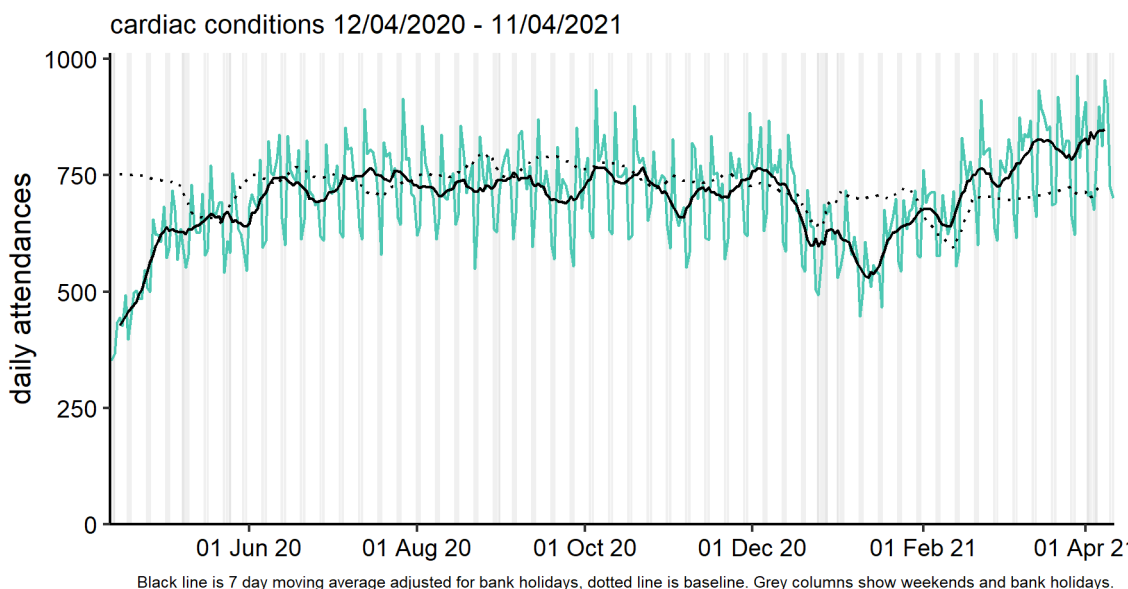
7 day moving average of gastroenteritis attendances within each age group.

gastroenteritis by age group (years) 12/04/2020 - 11/04/2021



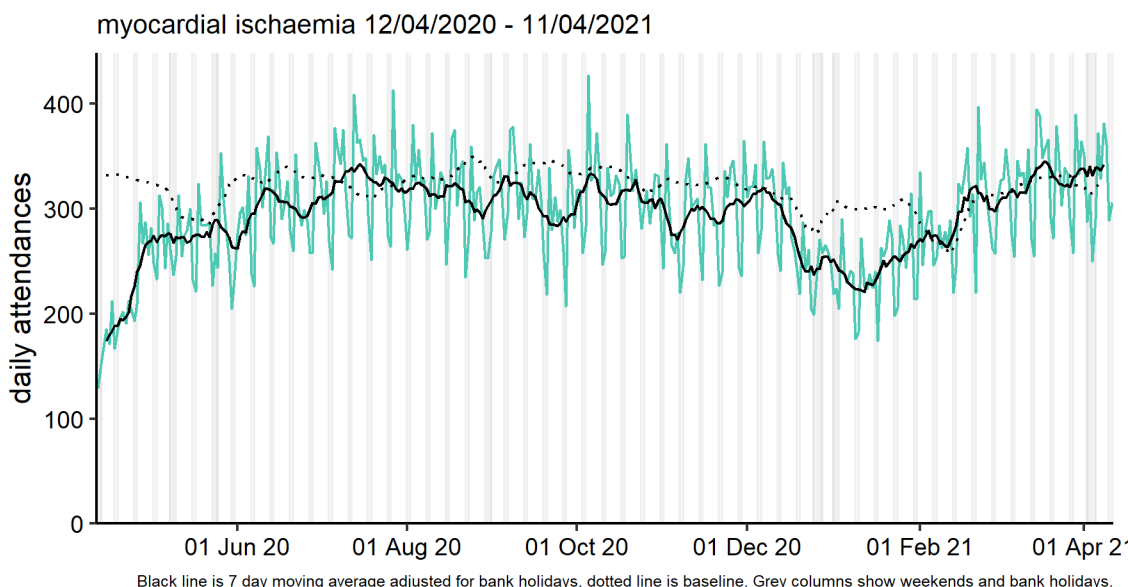
12: Cardiac.

Daily number of attendances recorded as cardiac attendances across the EDSSS network.



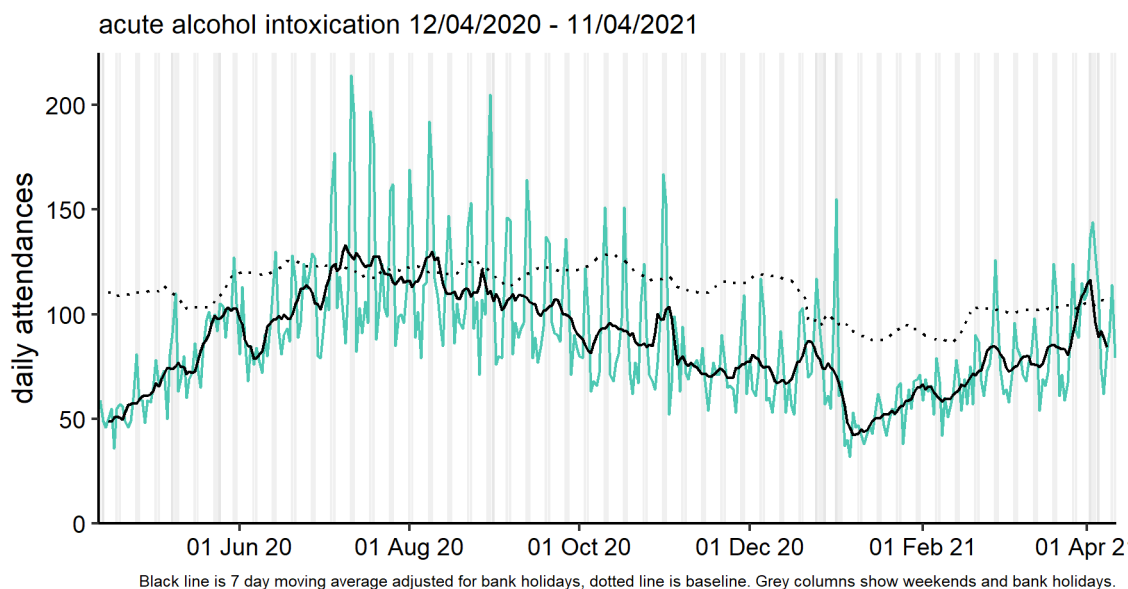
13: Myocardial Ischaemia.

Daily number of attendances recorded as myocardial ischaemia attendances across the EDSSS network.



14. Acute alcohol intoxication

Daily number of attendances recorded as acute alcohol intoxication attendances across the EDSSS network.



Notes and caveats:

- ▶ **National EDSSS** began operating in April 2018. Following the introduction of the Emergency Care Data Set (ECDS) the: <https://www.england.nhs.uk/ourwork/tsd/ec-data-set/>
- ▶ EDSSS receives an automated daily transfer of anonymised ED data from NHS Digital
- ▶ **Not all EDs currently provide data through ECDS on a daily basis**
- ▶ EDs are eligible for inclusion in this report only where the EDSSS reporting criteria have been met during the surveillance week reported:
 - Data relates to attendances at a type 1 ED
 - Data for 7 of the 7 most recent days was received by PHE
 - Data for those days was received within 2 calendar days of the patient arrival
- ▶ Where an ED meets these criteria, all data received from that ED previous to the current surveillance week is included. EDs eligible for inclusion is likely to change each week, which will in turn affect the historical data inclusion
- ▶ Individual EDs will not be identified in syndromic surveillance reporting in these bulletins
- ▶ **All EDs report diagnoses to EDSSS using SnomedCT codes**
- ▶ Not all diagnoses are confirmed
- ▶ The syndromic indicators presented in this bulletin are based on the **primary diagnosis of each attendance** as reported by EDs using SnomedCT codes:
 - Respiratory:** All respiratory diseases and conditions (infectious and non infectious).
 - Asthma:** As indicated by title.
 - Acute Respiratory Infections (ARI):** All acute infectious respiratory diseases.
 - Bronchiolitis/ bronchitis:** As indicated by title (excluding 'chronic').
 - Influenza-like Illness (ILI):** As indicated by title.
 - Pneumonia:** As indicated by title.
 - COVID-19-like:** Coronavirus* or Severe Acute Respiratory Syndrome (SARS).
 - *Please note: not all EDs have reported a coronavirus diagnosis code.
 - Gastrointestinal:** All gastrointestinal diseases and conditions (infectious and non infectious).
 - Gastroenteritis:** All infectious gastrointestinal diseases.
 - Cardiac:** All cardiac conditions.
 - Myocardial Ischaemia:** All ischaemic heart disease.
 - Acute alcohol intoxication:** As indicated by title (excluding 'chronic')
- ▶ **EDSSS indicators are likely to be an underestimation of number attendances as they are based on primary diagnosis only.**
- ▶ **The EDSSS should therefore be used to monitor trends in ED attendances and not numbers of 'cases'.**
- ▶ Baselines: Last refreshed: 1 February 2021
 - Represent seasonally expected levels of activity
 - Constructed from historical data, taking into account:
 - change from sentinel to National EDSSS
 - coverage (numbers of attendances and the individual type 1 EDs included)**
 - Gastroenteritis baseline accounts for rotavirus vaccine introduction (July 2013)
 - Exclude data from 2020 due to the impact of the COVID-19 pandemic on ED services and patient healthcare seeking behaviour
- ▶ **Sentinel EDSSS** ran from July 2010 to March 2018, collected data through a bespoke, voluntary network of EDs across England and Northern Ireland:
<https://www.gov.uk/government/collections/syndromic-surveillance-systems-and-analyses>

Acknowledgements:

We are grateful to the clinicians in each ED and other staff within each Trust for their continued involvement in the EDSSS.

We thank the Royal College of Emergency Medicine, NHS Digital and NHS England for their support in the development of national EDSSS, using anonymised data collection from ECDS.

Emergency Department Syndromic Surveillance System Bulletin.

Produced by: PHE Real-time Syndromic Surveillance Team
1st Floor, 5 St Philips Place, Birmingham, B3 2PW

Tel: 0344 225 3560 > Option 4 > Option 2 **Email:** syndromic.surveillance@phe.gov.uk

Web: <https://www.gov.uk/government/collections/syndromic-surveillance-systems-and-analyses>