

# Quantifying the benefits of Flood and Coastal Erosion Risk Management - stakeholder and community engagement and modelling, mapping and data

## Appendix 1 - Model evolution

Report – SC130008/R2 Science Report



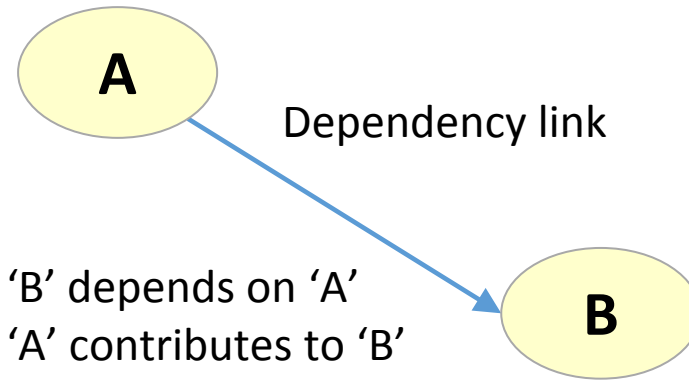
# Key to models

**SCE / MMD  
ACTIVITY OR  
PROCESS**

**OUTPUT**  
(Tangible or  
measurable)

**Important  
influence** Outside  
MMD or SCE  
control

**MODIFIER** Applies  
to more than one  
node



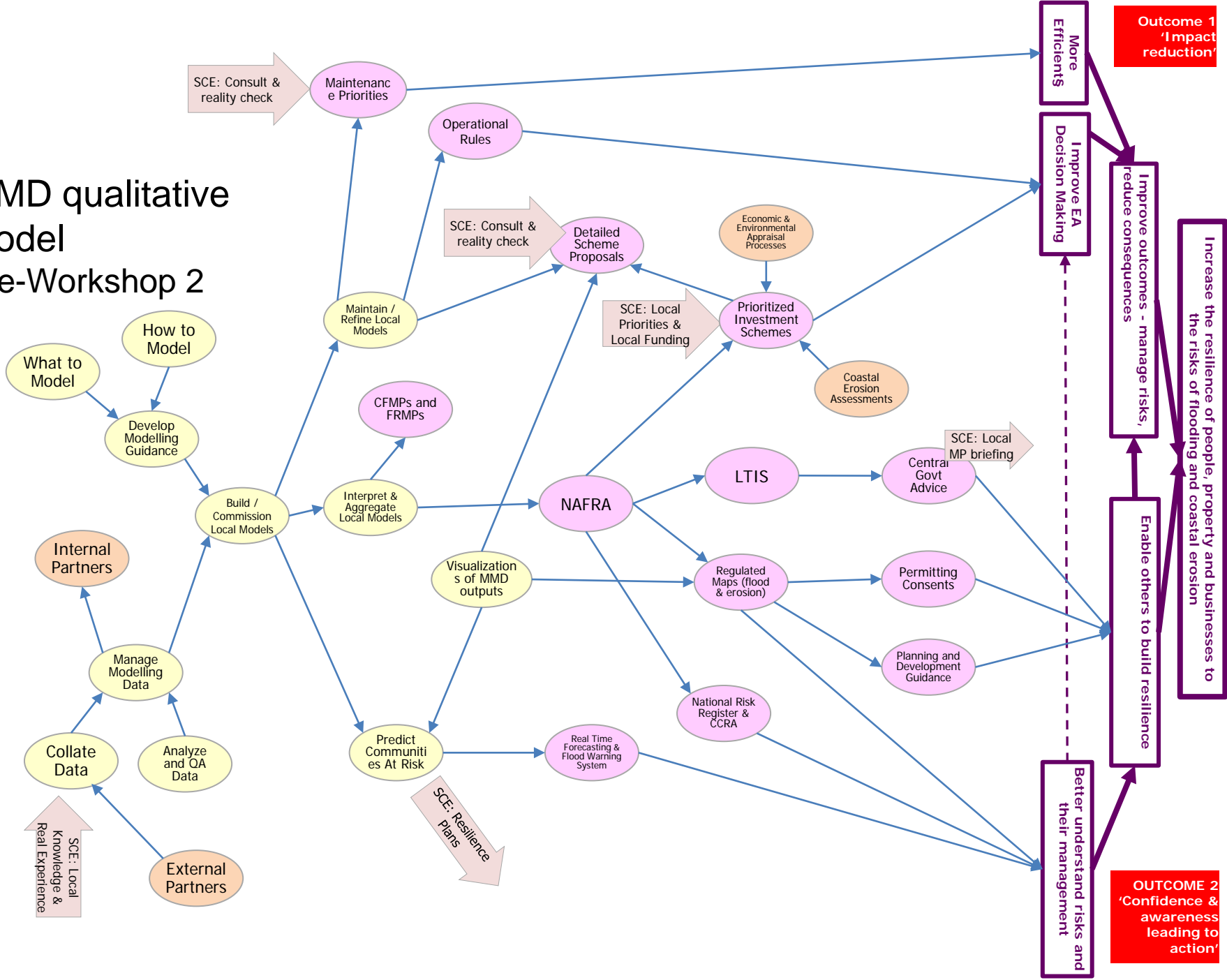
Link from other  
model SCE or MMD

# A1.1 Model evolution – modelling, mapping and data

## A1.1.1 Qualitative model

# MMD qualitative model

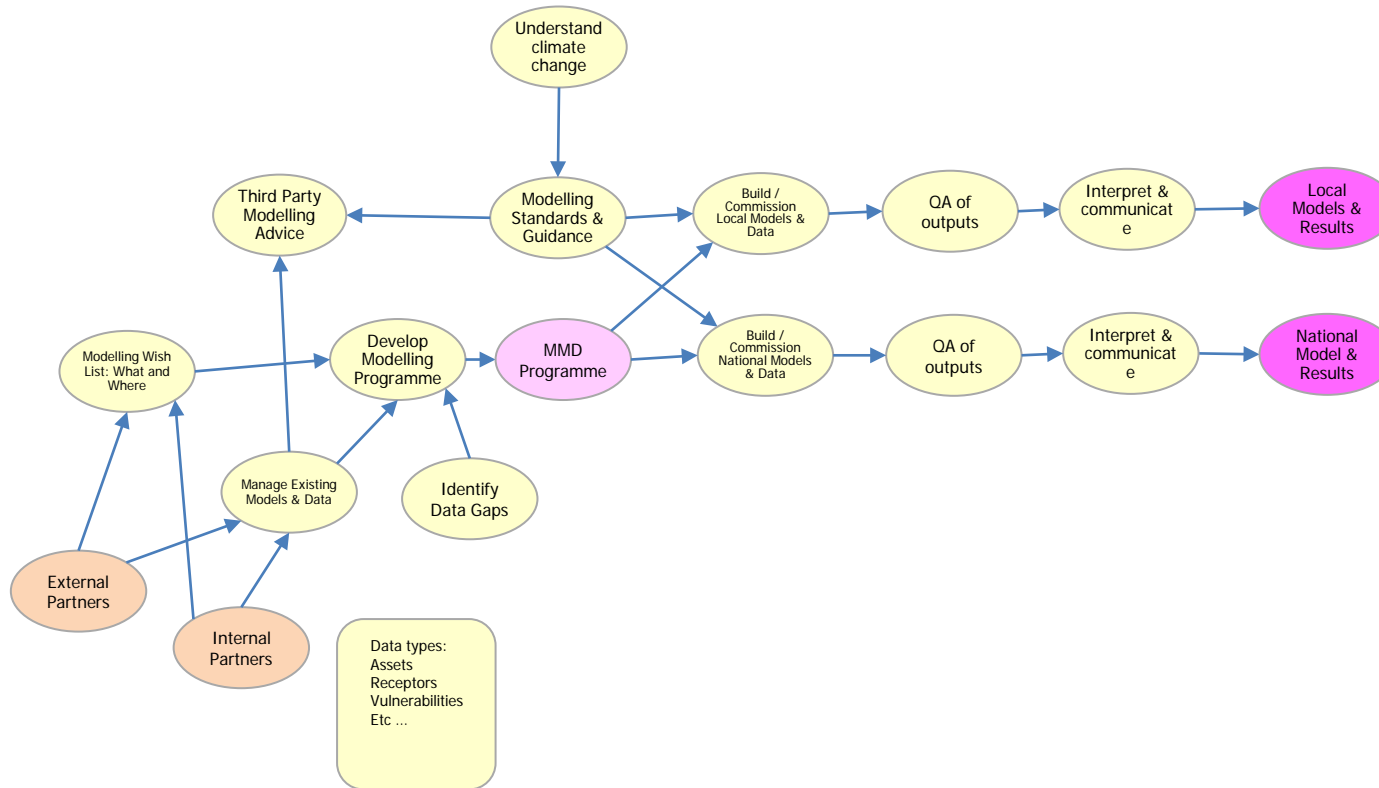
## Pre-Workshop 2



# MMD qualitative model

## Page 1: Activities leading to the production of Local and National Models

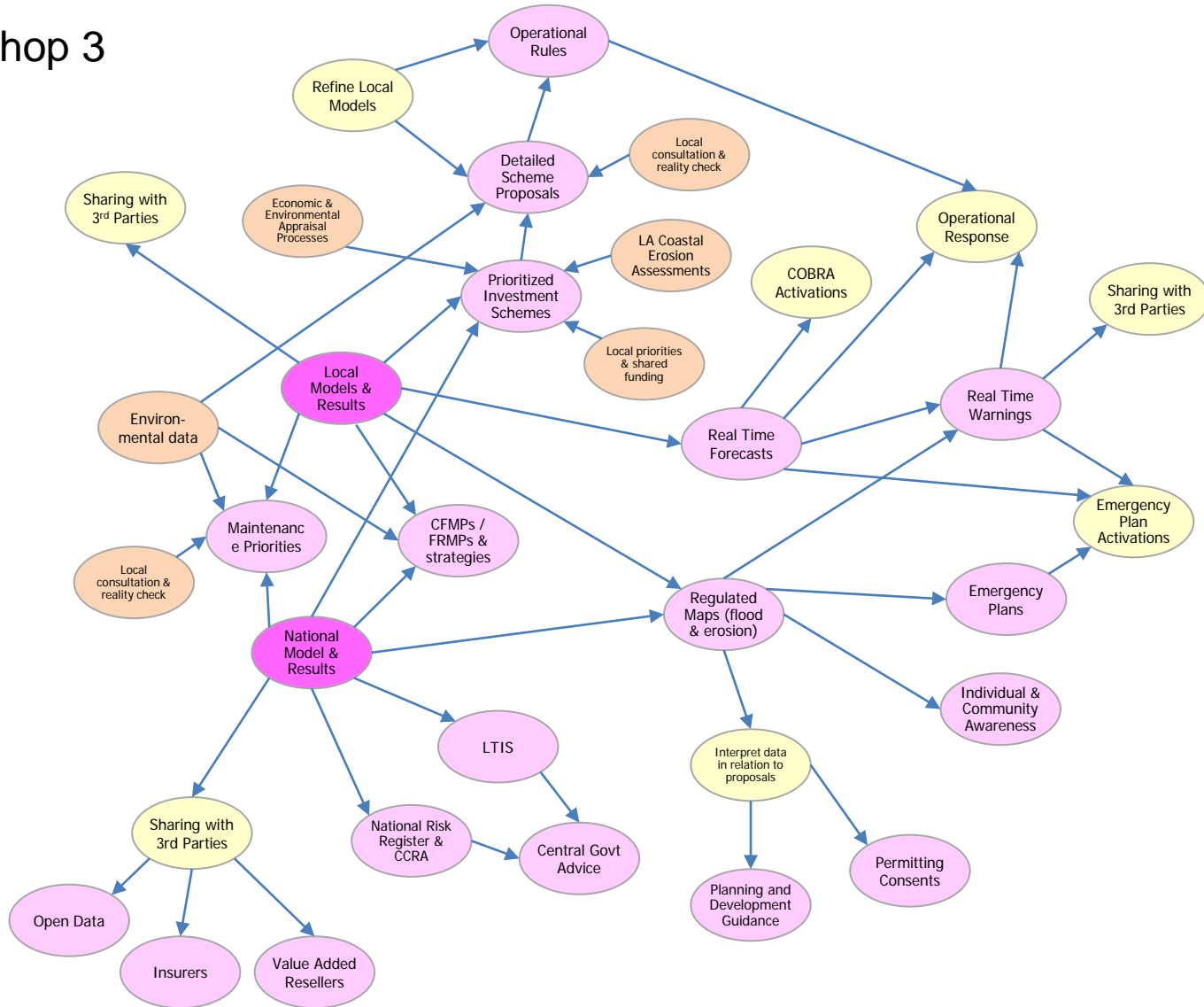
### Pre-Workshop 3



# MMD qualitative model

## Page 2: The uses made of Local and National Models

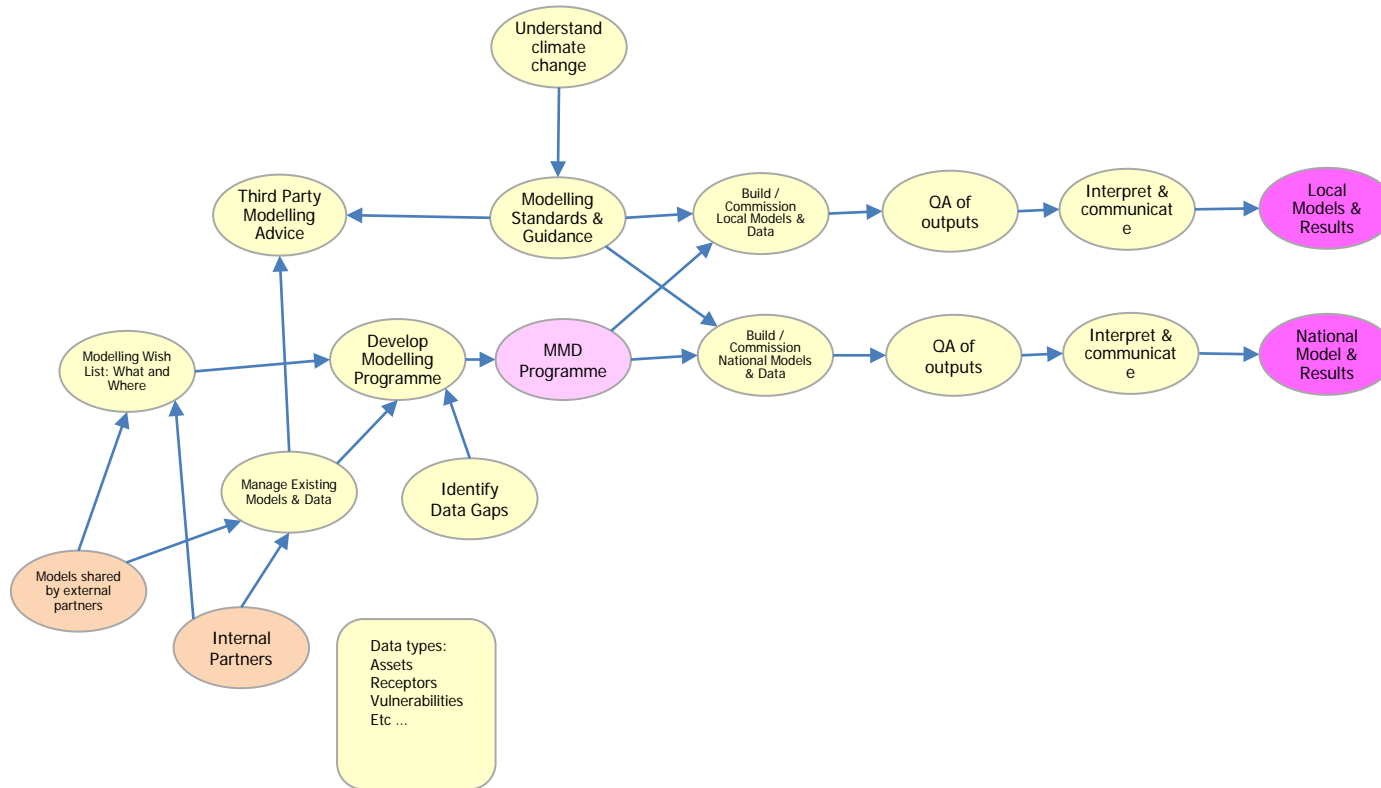
### Pre-Workshop 3



# MMD qualitative model

## Page 1: Activities leading to the production of Local and National Models

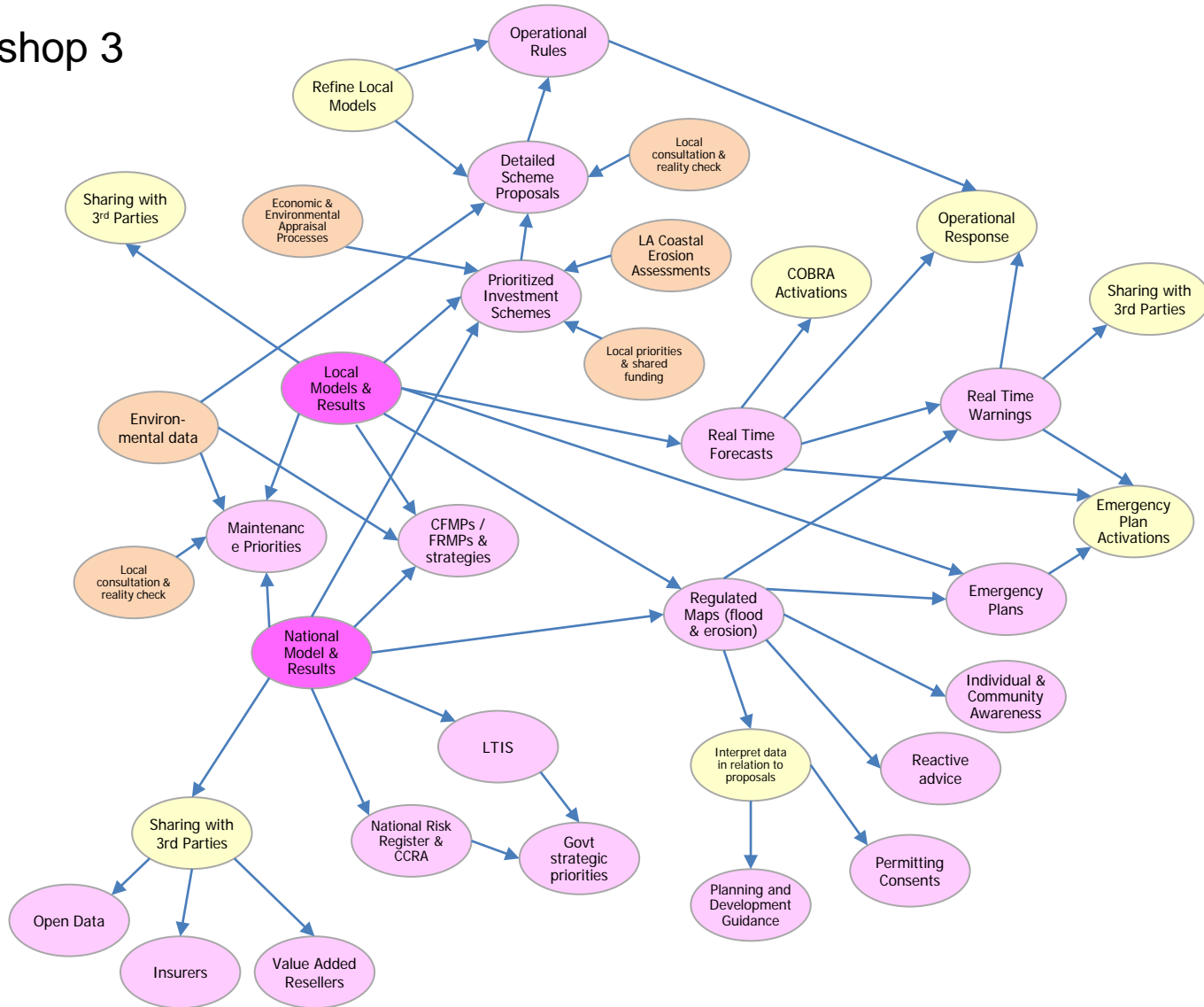
### Post-Workshop 3



# MMD qualitative model

## Page 2: The uses made of Local and National Models

### Post-Workshop 3



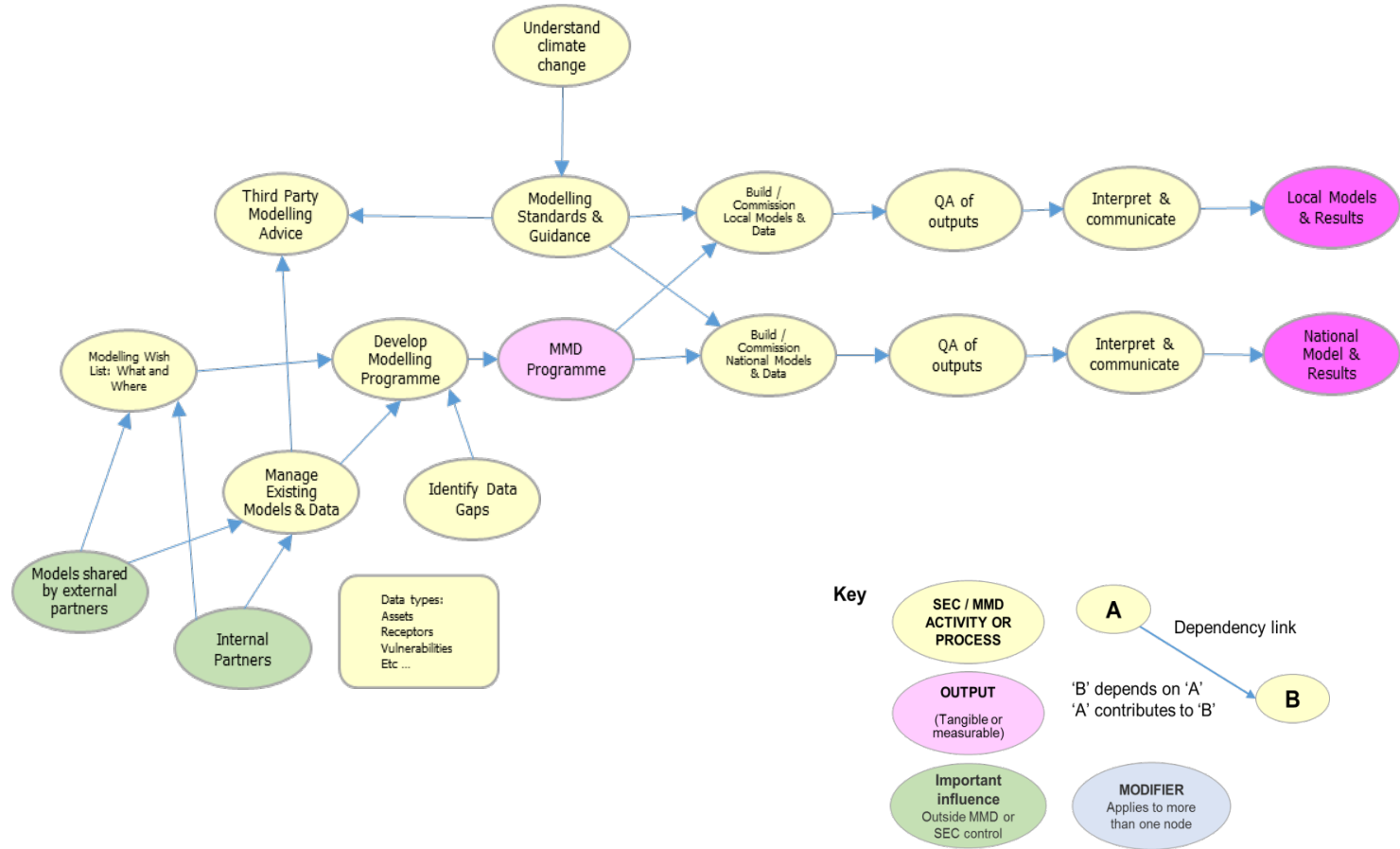


# Appendix 1.1 – Model evolution – modelling, mapping and data

## 1.1.2 Final qualitative models

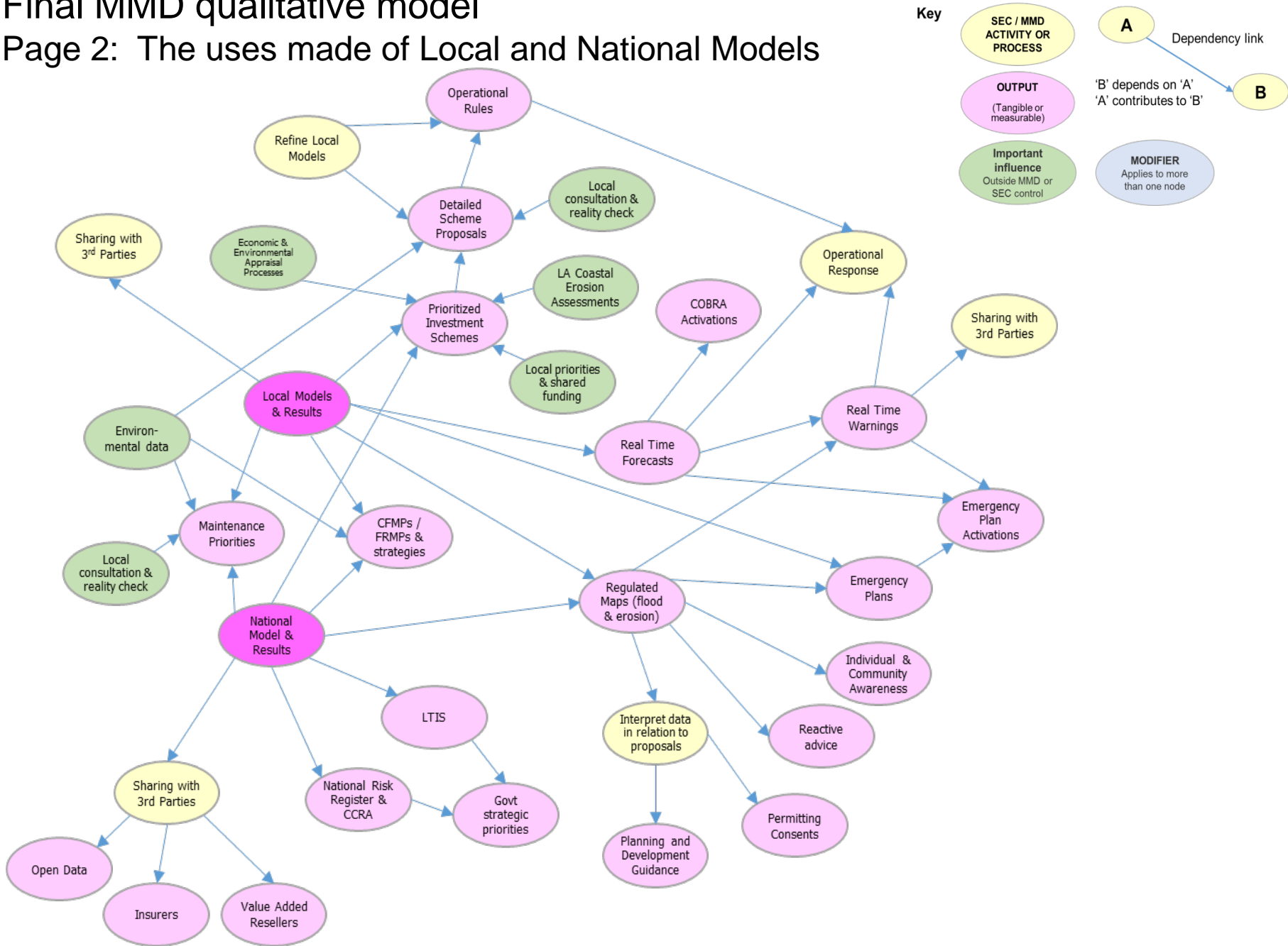
# Final MMD qualitative model

## Page 1: Activities leading to the production of Local and National Models



# Final MMD qualitative model

## Page 2: The uses made of Local and National Models



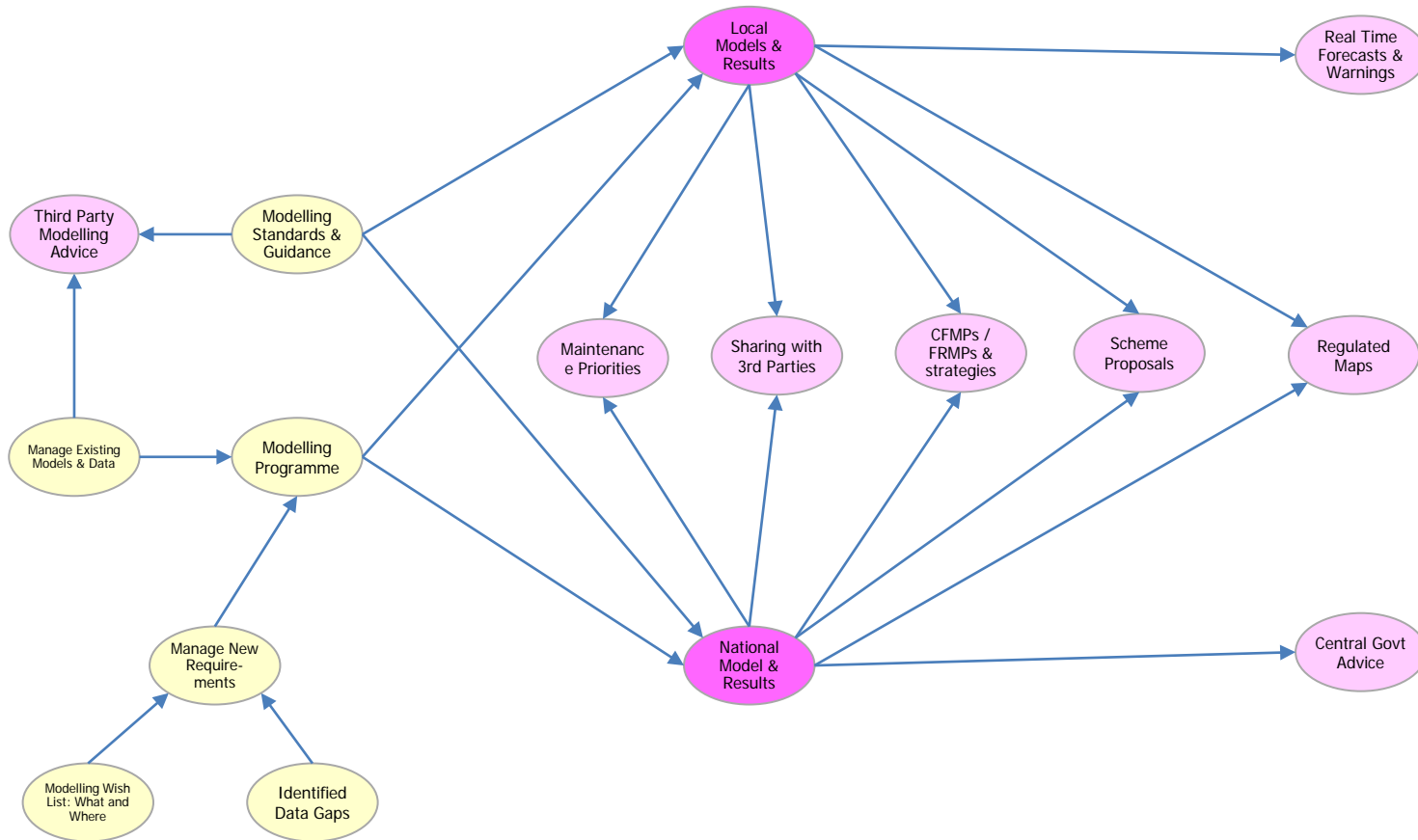
# A1.1 – Model evolution – modelling, mapping and data

A1.1.3 – Simplified model for quantification

# Simplified modelling, mapping and data model

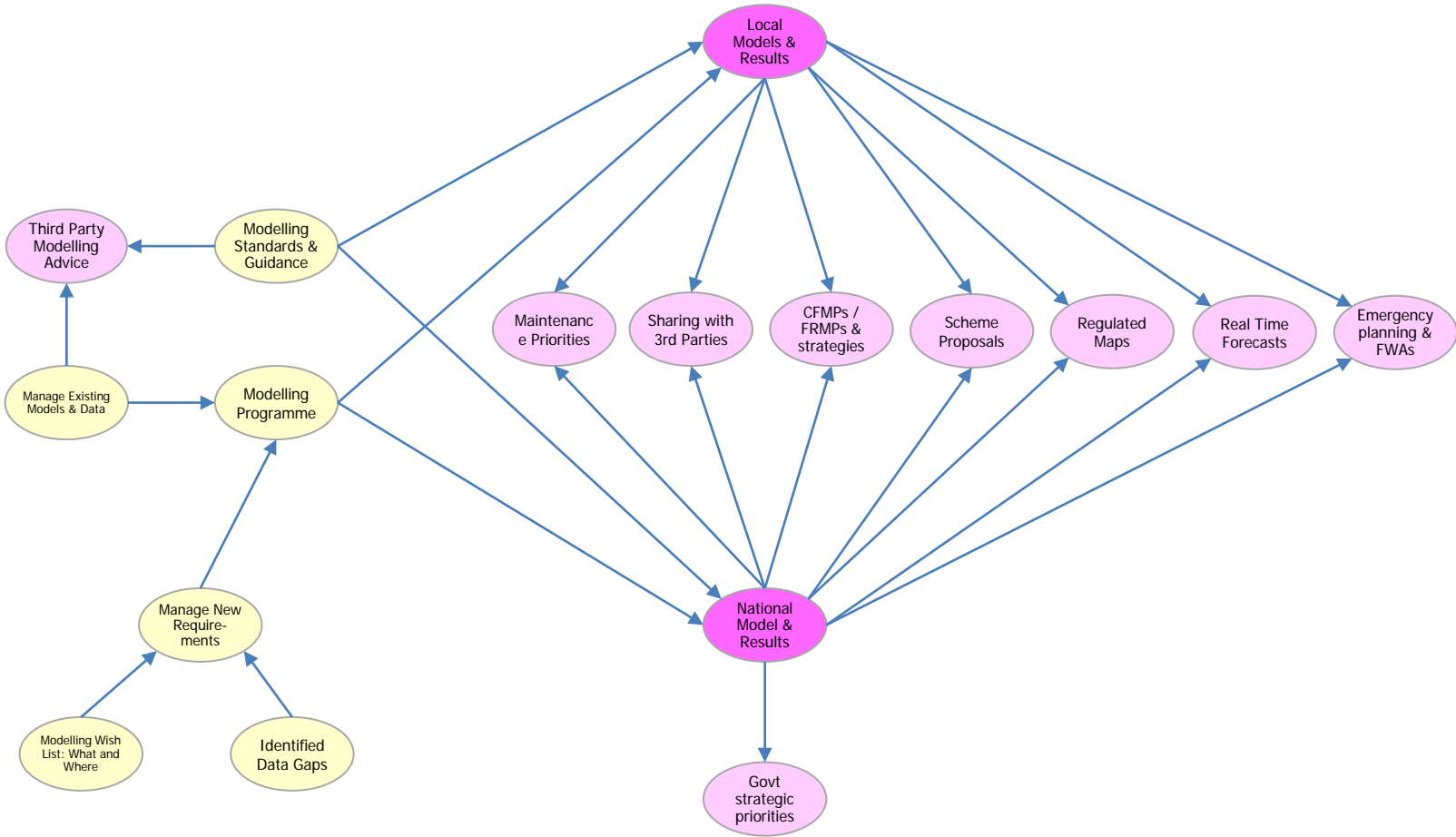
## Pre-Workshop 3

- Green bubbles removed (but be aware when estimating probabilities)
- Activities combined where linear chains only
- Primary outputs listed, but uses of these outputs removed

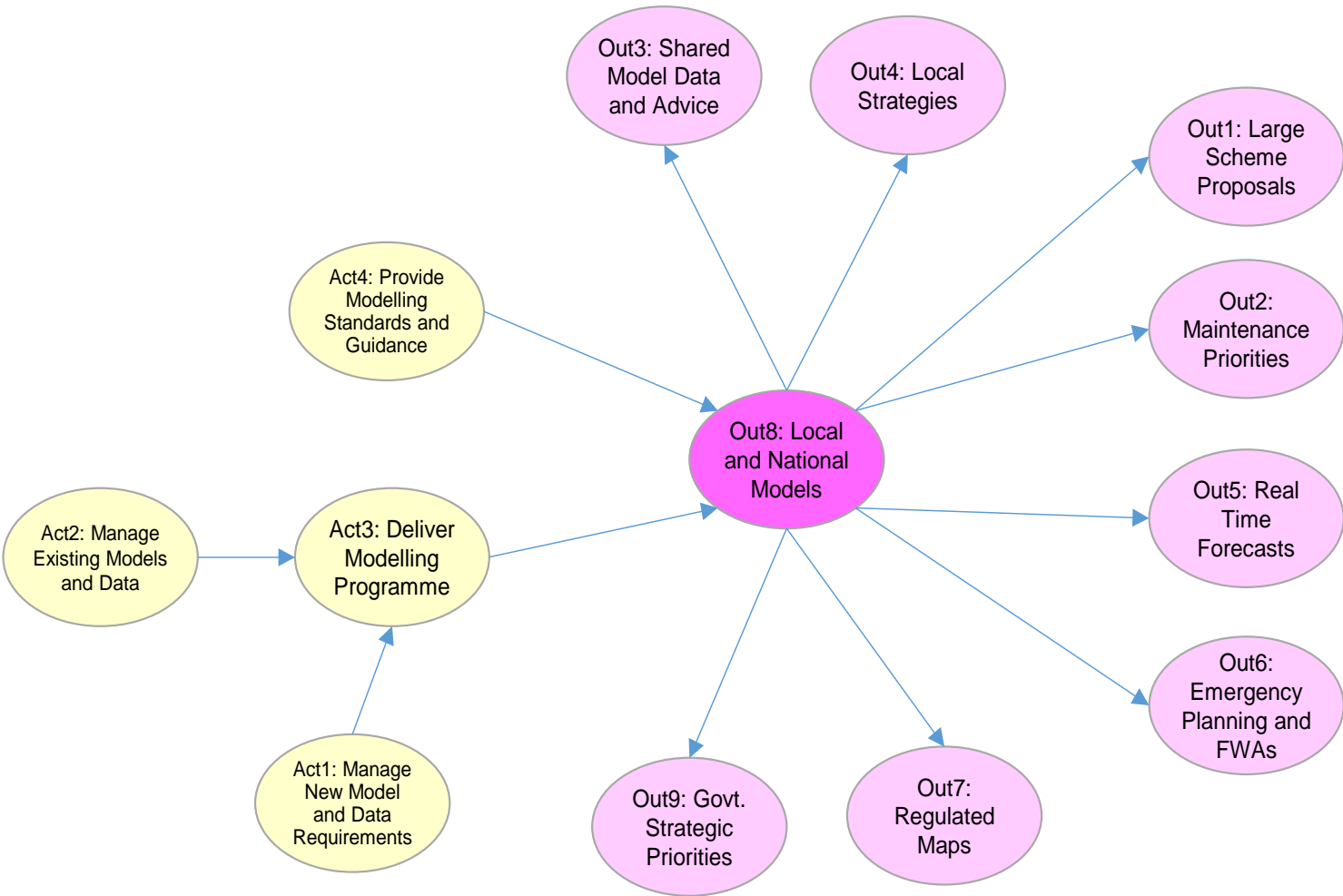


# Simplified modelling, mapping and data model

## Post-Workshop 3



# Final modelling, mapping and data model for quantification



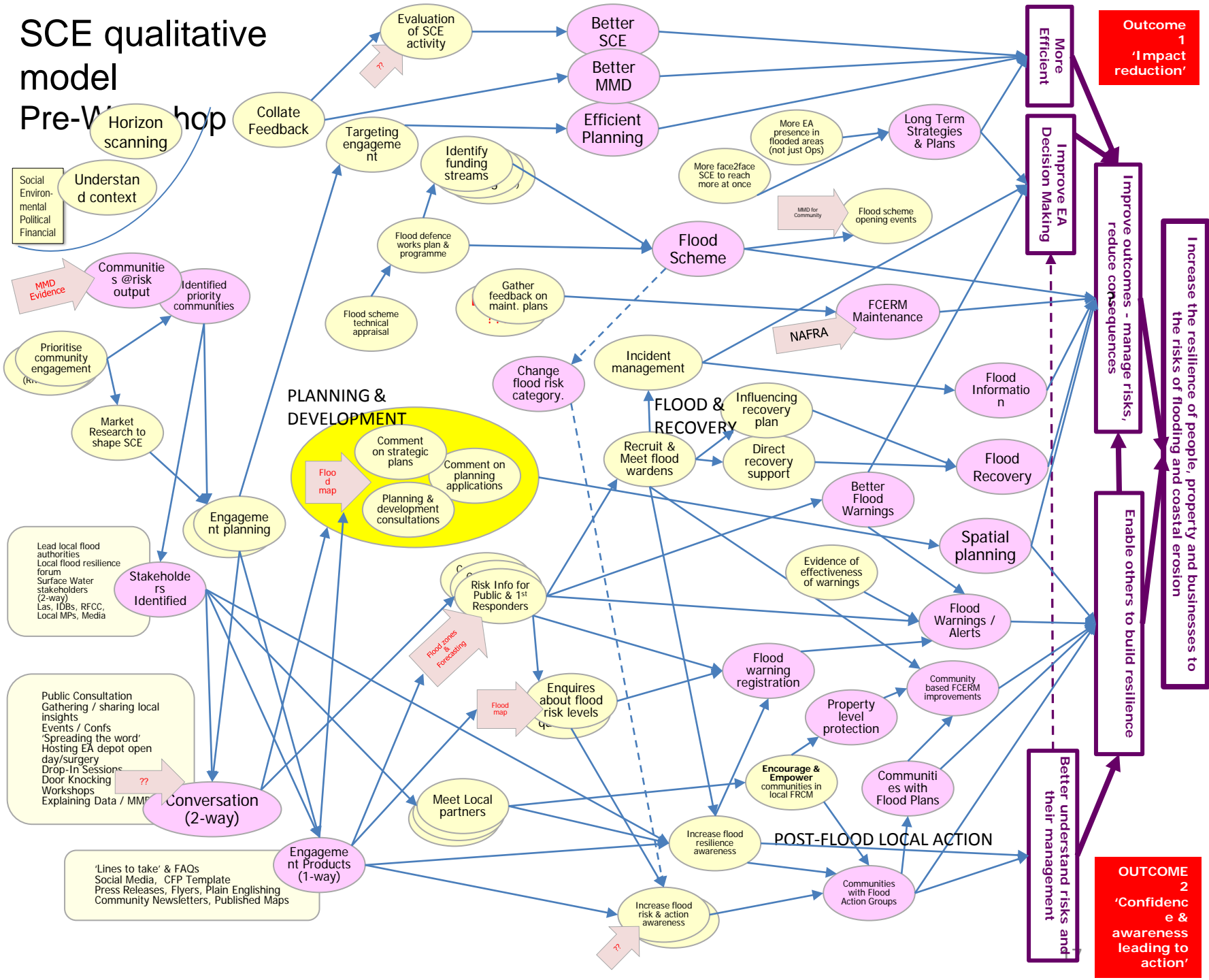
# A1.2 – Model evolution – stakeholder and community engagement

A1.2.1 Qualitative model



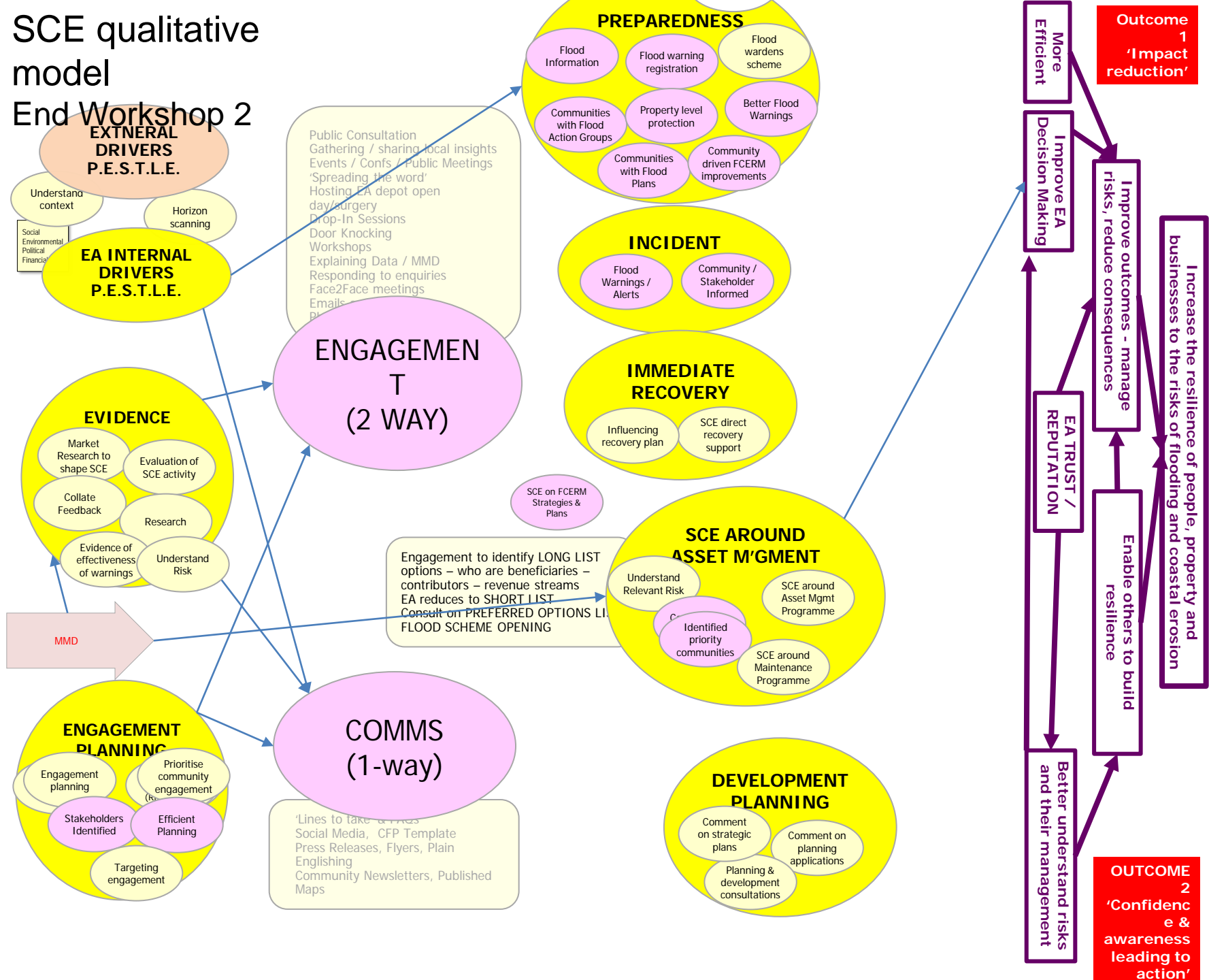
# SCE qualitative model

## Pre-Workshop



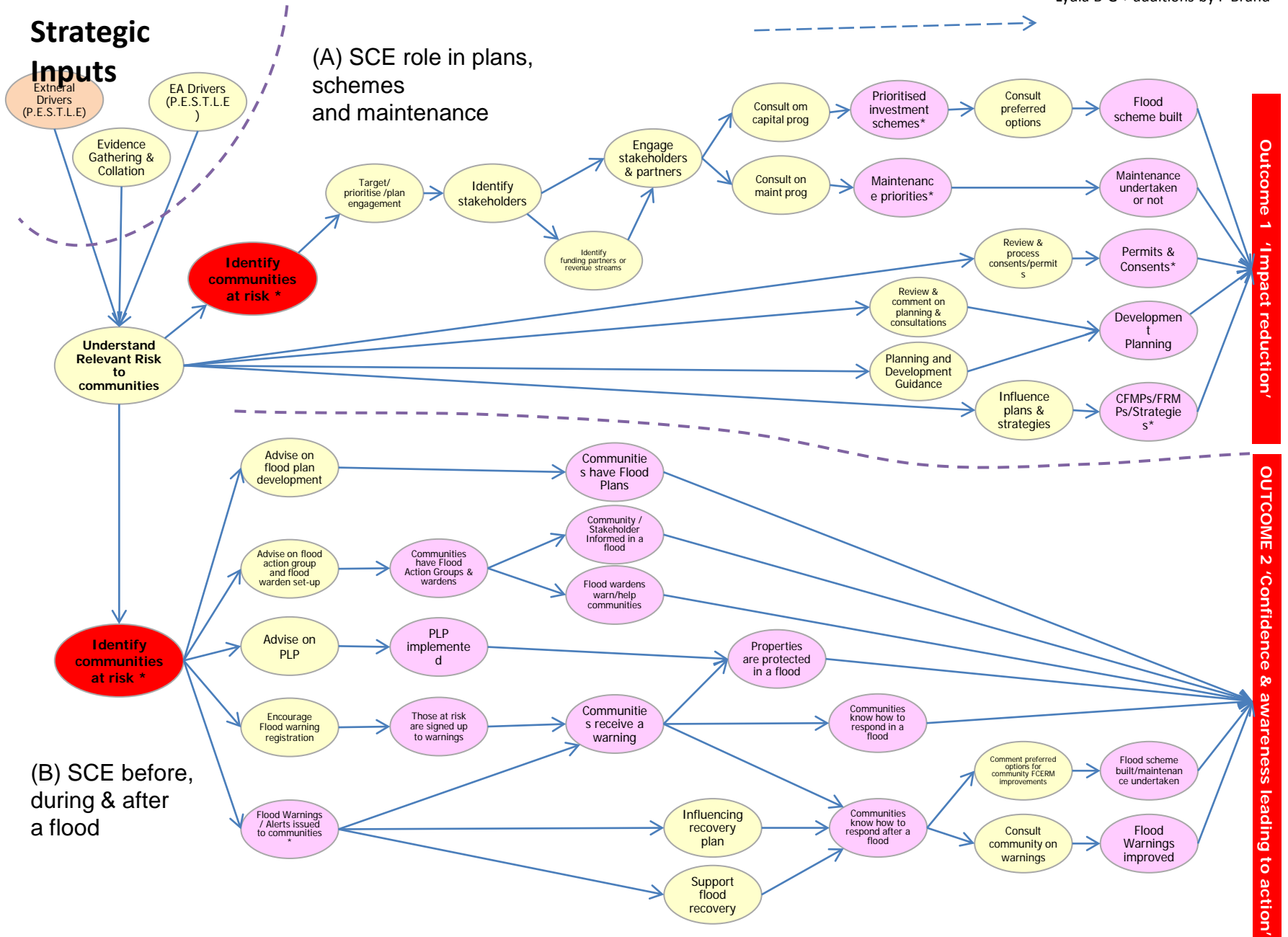
# SCE qualitative model

## End Workshop 2



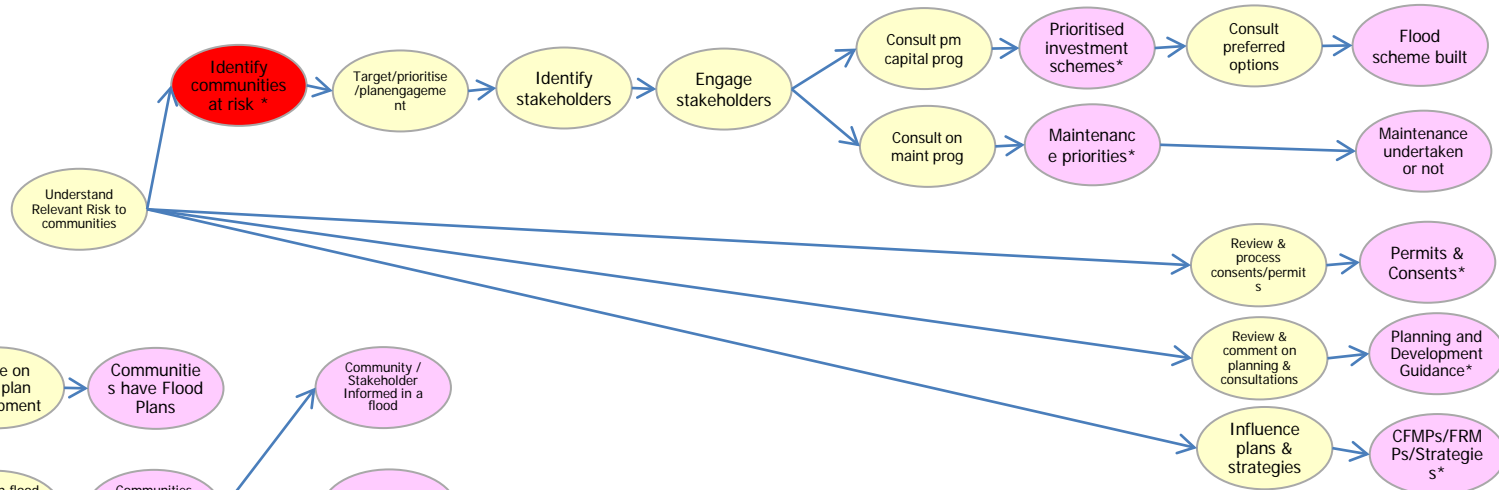
# SCE qualitative model – Developments Post-Workshop 2 - using MMD model style

Lydia B-G + additions by P Brand

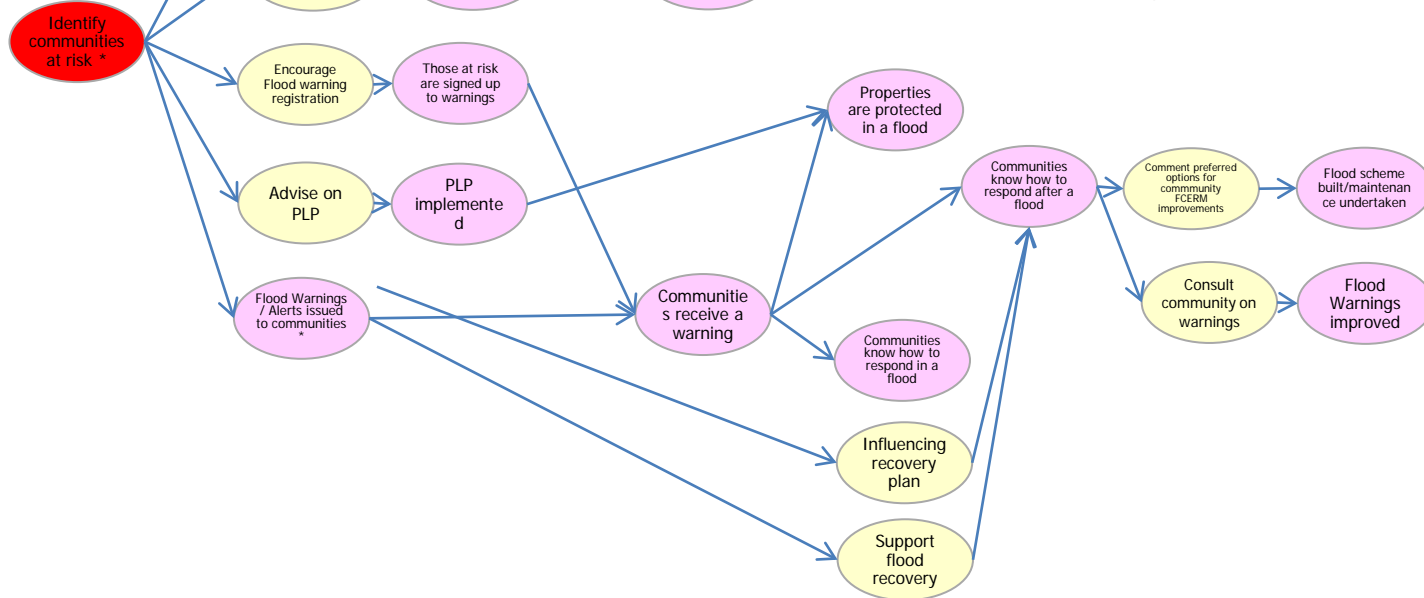


# SCE qualitative model – Further developments Post-Workshop 2

(A) SCE role in plans, schemes and maintenance

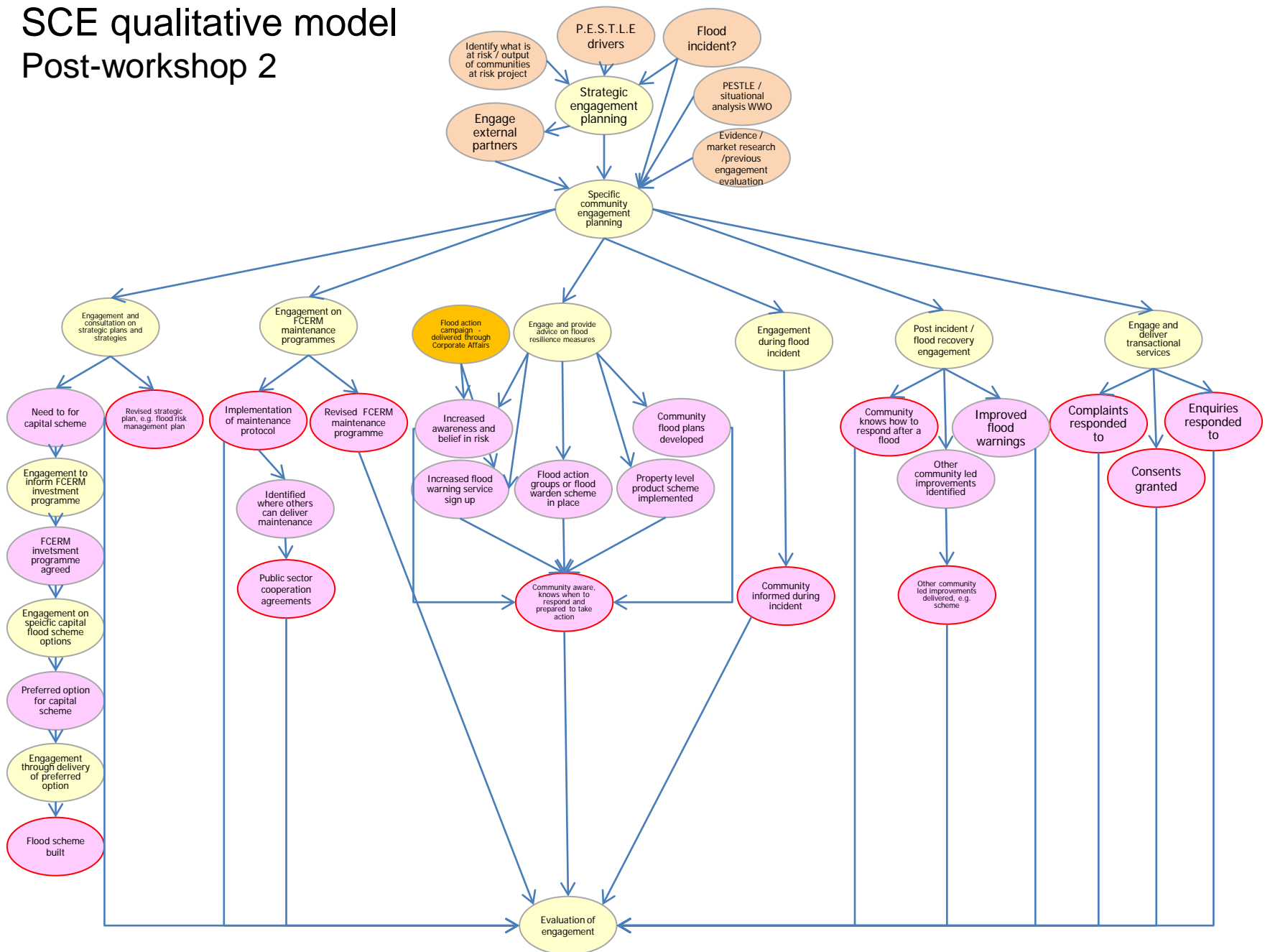


(B) SCE before, during & after a flood



# SCE qualitative model

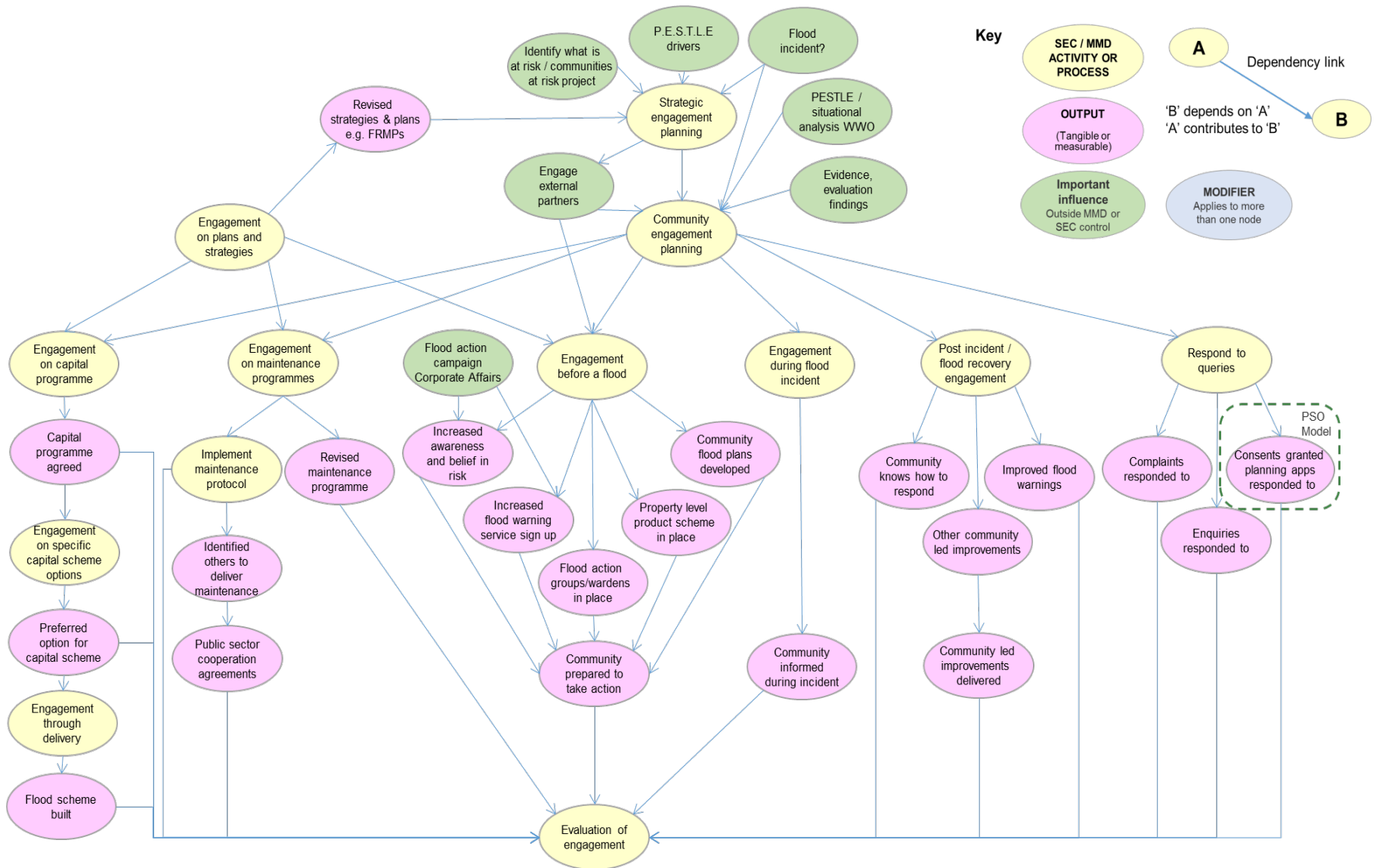
## Post-workshop 2



# A1.2 – Model evolution – stakeholder and community engagement

A1.2.2 Final qualitative model

# Final SCE qualitative model



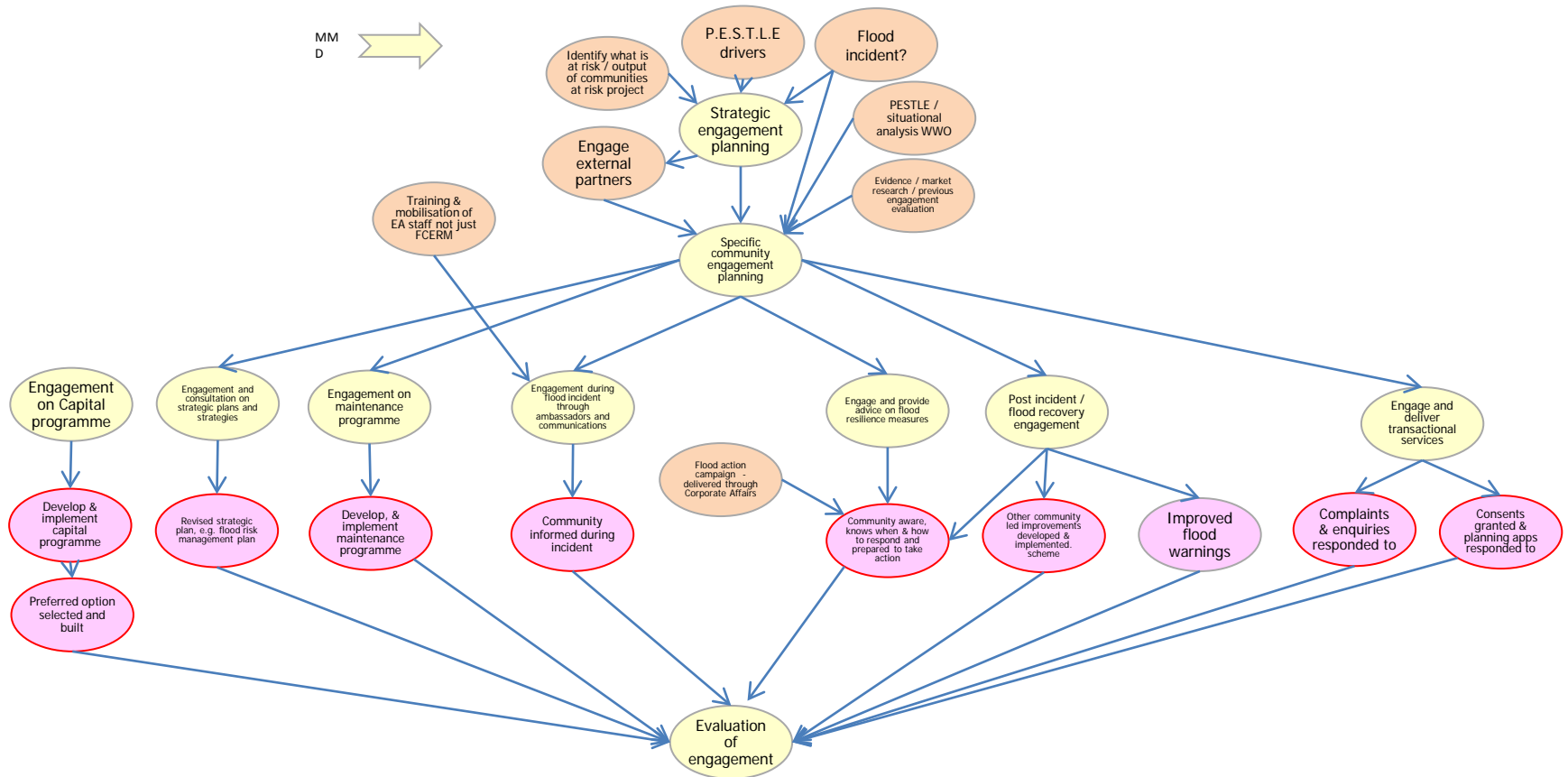
# A1.2 – Model evolution – stakeholder and community engagement

A1.2.3 Simplified model for quantification



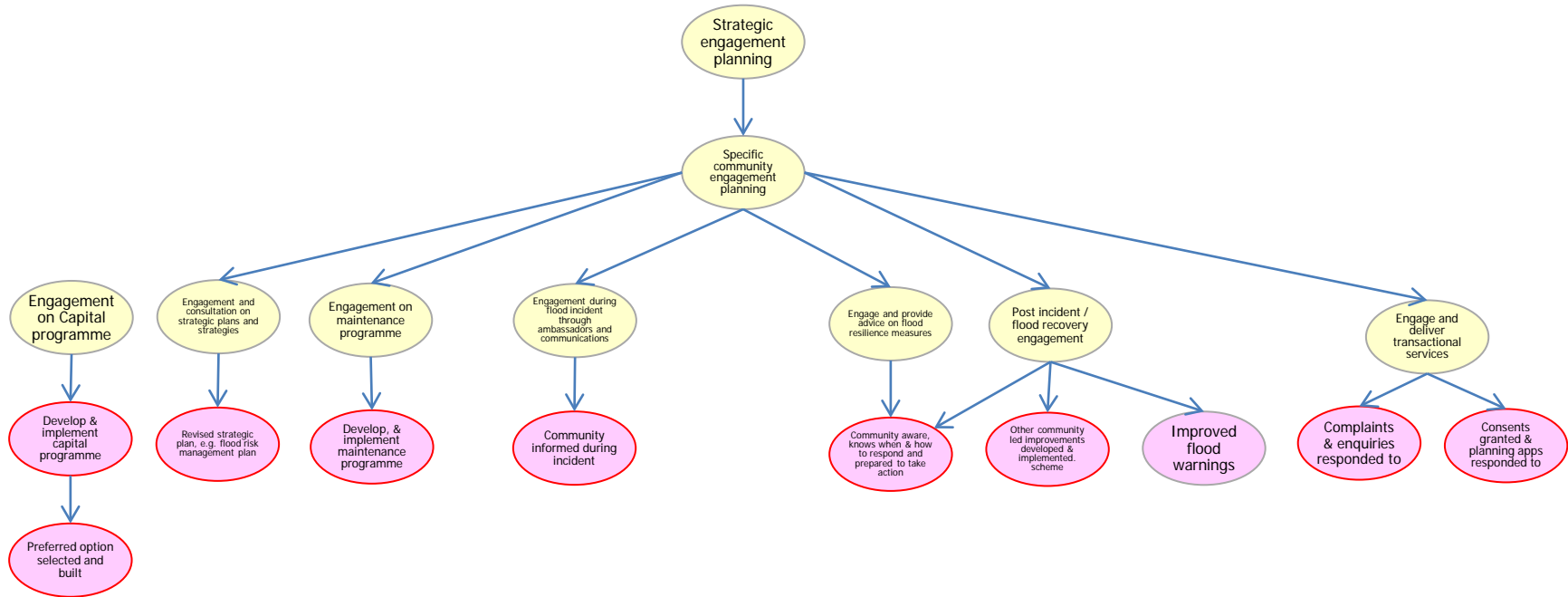
# Simplified stakeholder & community engagement model

## Pre-Workshop 3



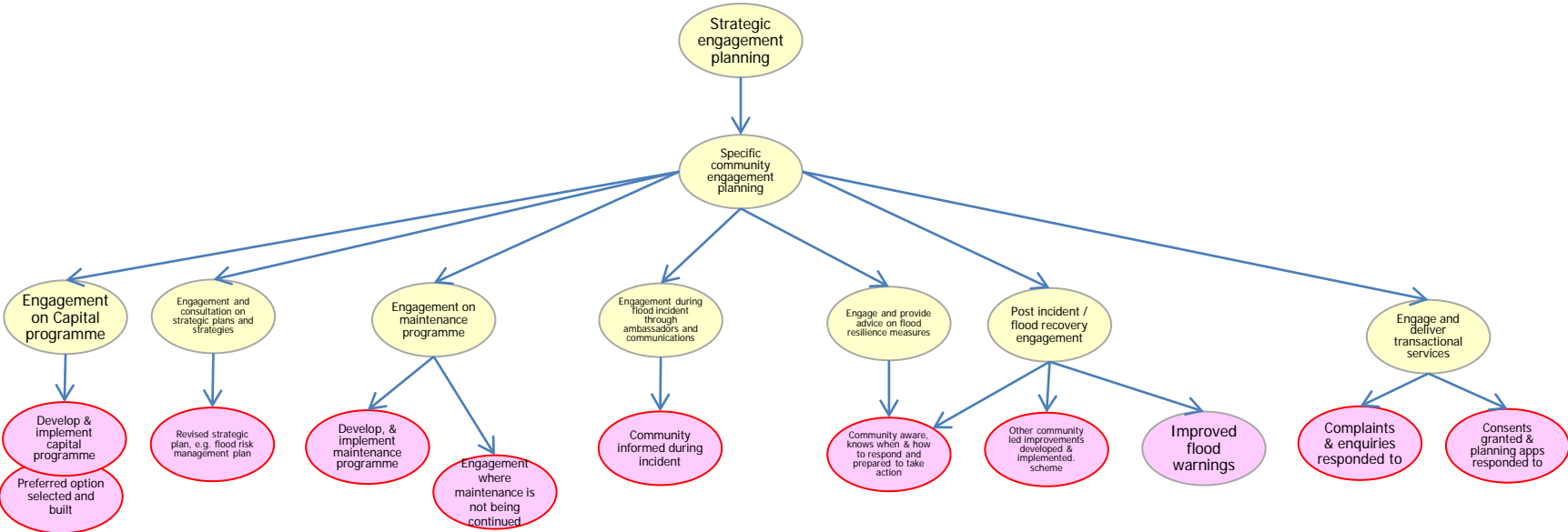
# Simplified stakeholder & community engagement model

## Pre-Workshop 3 – further development



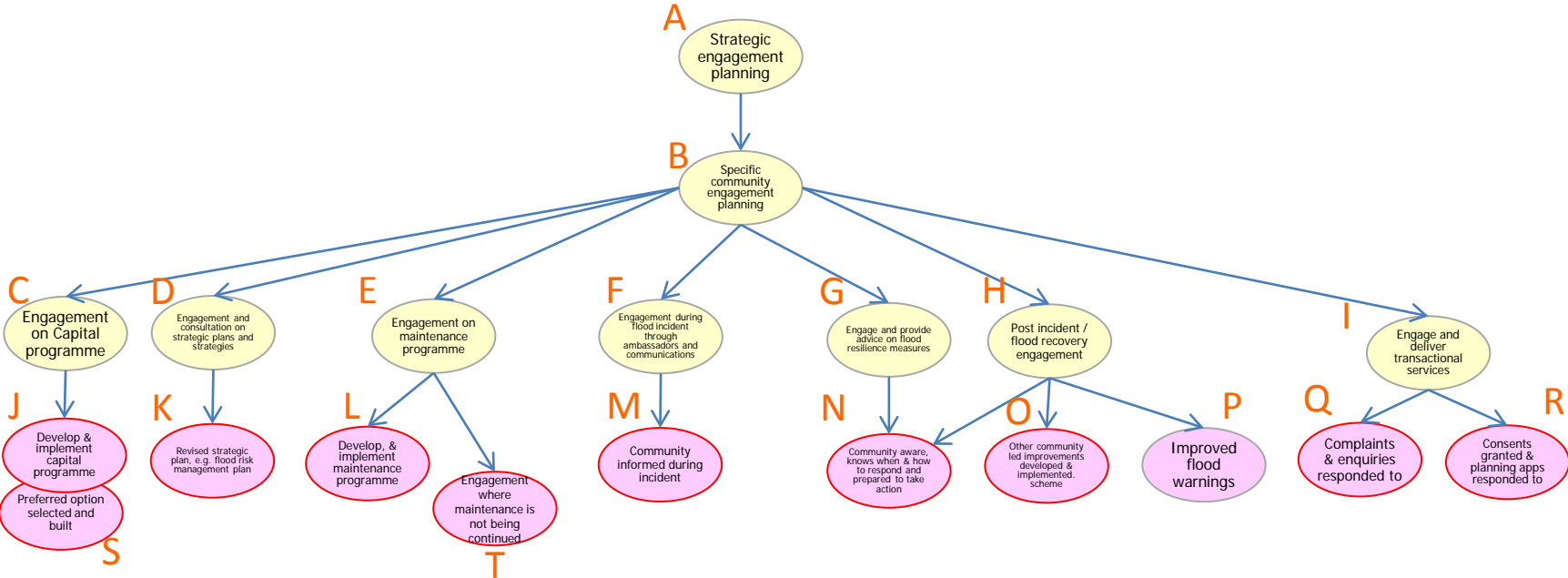
# Simplified stakeholder & community engagement model

As amended during Workshop 3



# Simplified stakeholder & community engagement model

As amended during Workshop 3



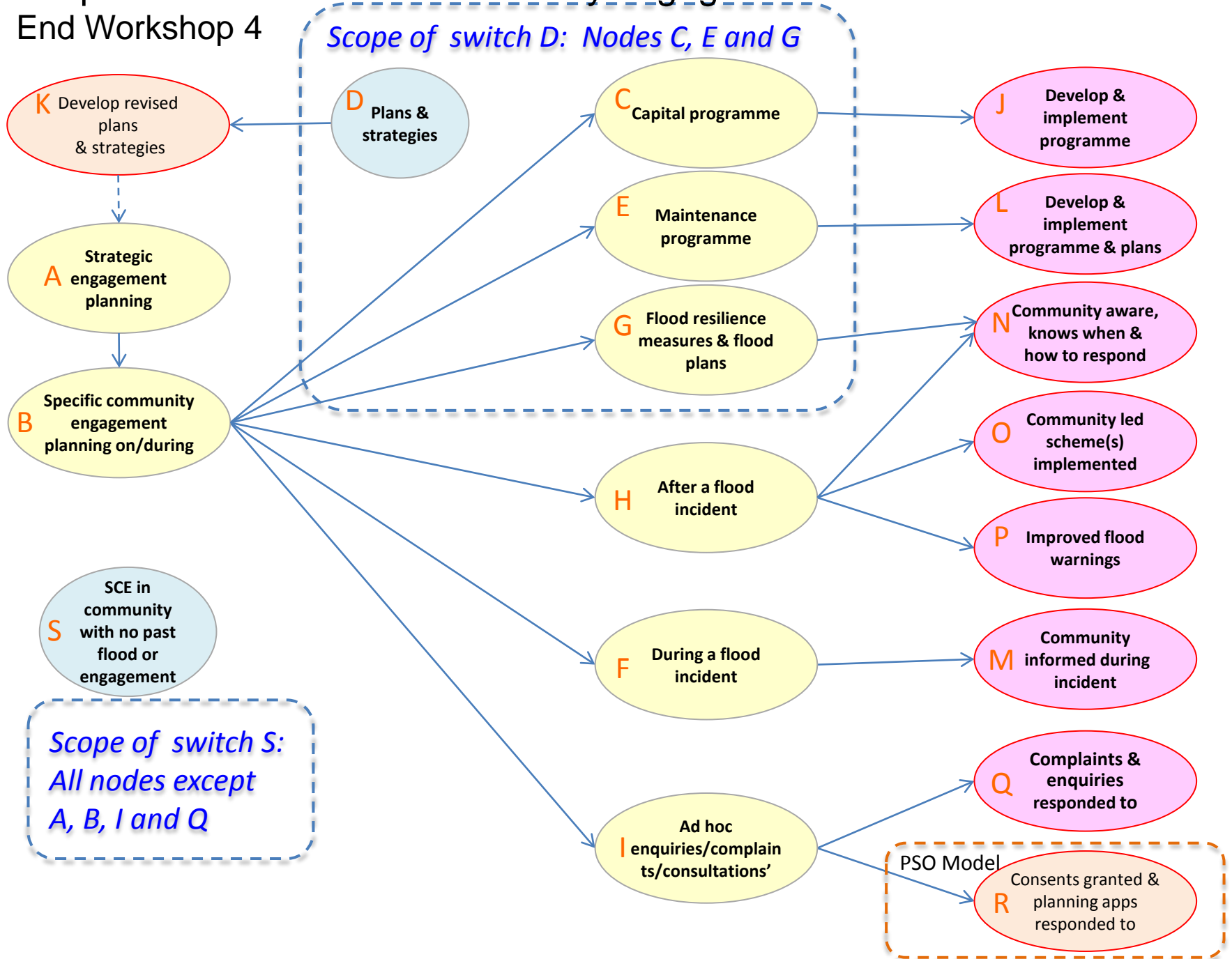
# Simplified stakeholder & community engagement model

## Pre-Workshop 4



# Simplified stakeholder & community engagement model

## End Workshop 4



# Final stakeholder & community engagement model for quantification

