

SPI-M-O

Medium-Term Projections

20th January 2021

SPI-M-O medium-term projections

- **These projections are not forecasts or predictions.** They represent a scenario in which the trajectory of the epidemic continues to follow the trends that were seen in the data up to 18th January.
- **They will not fully reflect the impact of policy changes made in the two to three weeks prior to 18th January, such as the English lockdown announced on the 4th January.**
- The projections are based on the trends in the available epidemiological data and will only include the impact of vaccinations where this has influenced these trends.
- **The projections do not include the impact of vaccinations which have yet to be administered or any possible expansion of the programme over the coming weeks.** They will include the effect of any benefits of vaccination seen to date. The delay between vaccination, the build up of immunity and infection means the impact on admissions and deaths over the next 4 weeks is expected to be limited.
- Not all modelling groups produce projections for both hospitalisations and deaths. As a result, there will be some differences in the models included in the combined projections for each metric.

Metrics:

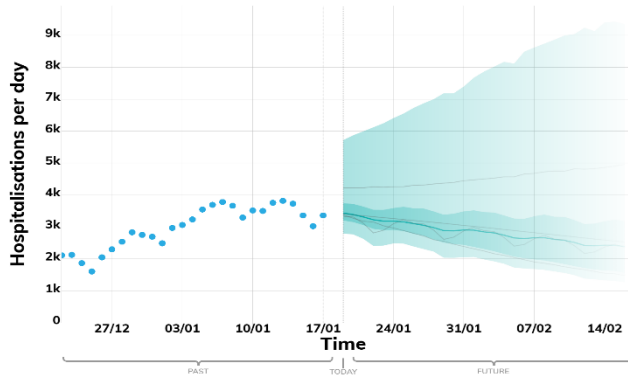
- **New hospitalisations per day:** Number of individuals admitted with COVID-19 and inpatients newly diagnosed with COVID-19. Data definitions differ slightly across all four nations.
- **New deaths per day (by date of death):** The number of COVID-19 deaths within 28 days of a positive test. Data definitions differ slightly across all four nations.

Modelled projections based on trends to 18th January 2021

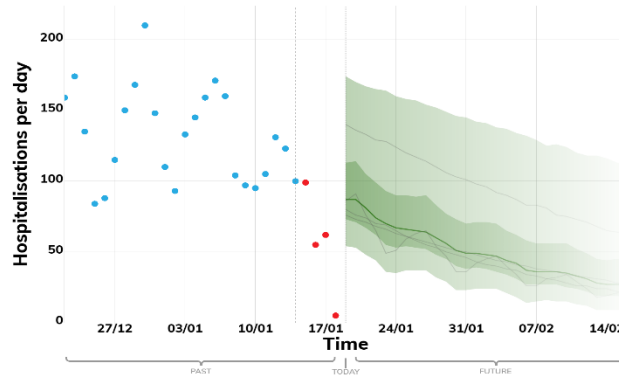
New hospital admissions per day

These projections are based on current trends and cannot yet include the full impact of the national lockdown announced on 5th January. They are not forecasts or predictions.

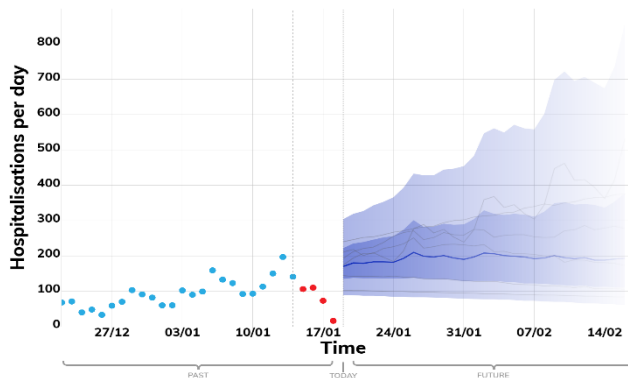
ENGLAND



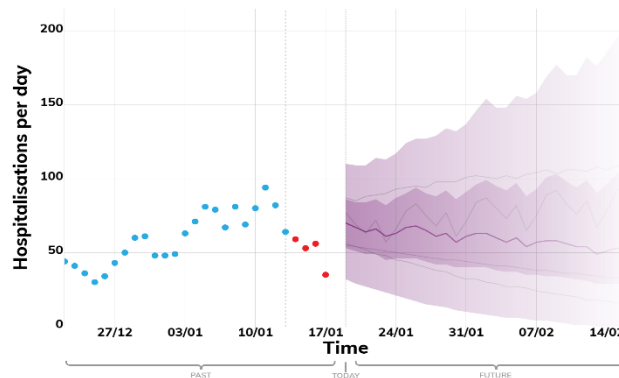
WALES



SCOTLAND



NORTHERN IRELAND



Key



These fan charts show the combined medium-term projections based on current trends. They cannot account for policy or behavioural changes in the two to three weeks prior to 18th January, as these will not yet have been reflected in epidemiological data.

These projections will **not fully** reflect the impact of the national lockdown announced on the 5th January.

The projections do not include the impact of vaccinations yet to be administered or the planned expansion of the programme over the coming weeks. They will include the effect of any benefits of vaccination seen to date. The delay between vaccination, the build up of immunity and infection means the impact on admissions and deaths over the next 4 weeks is expected to be limited.

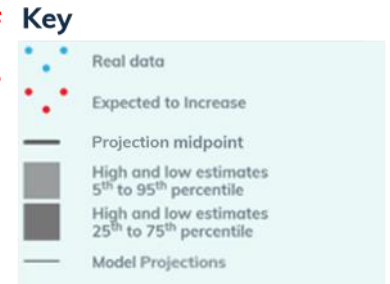
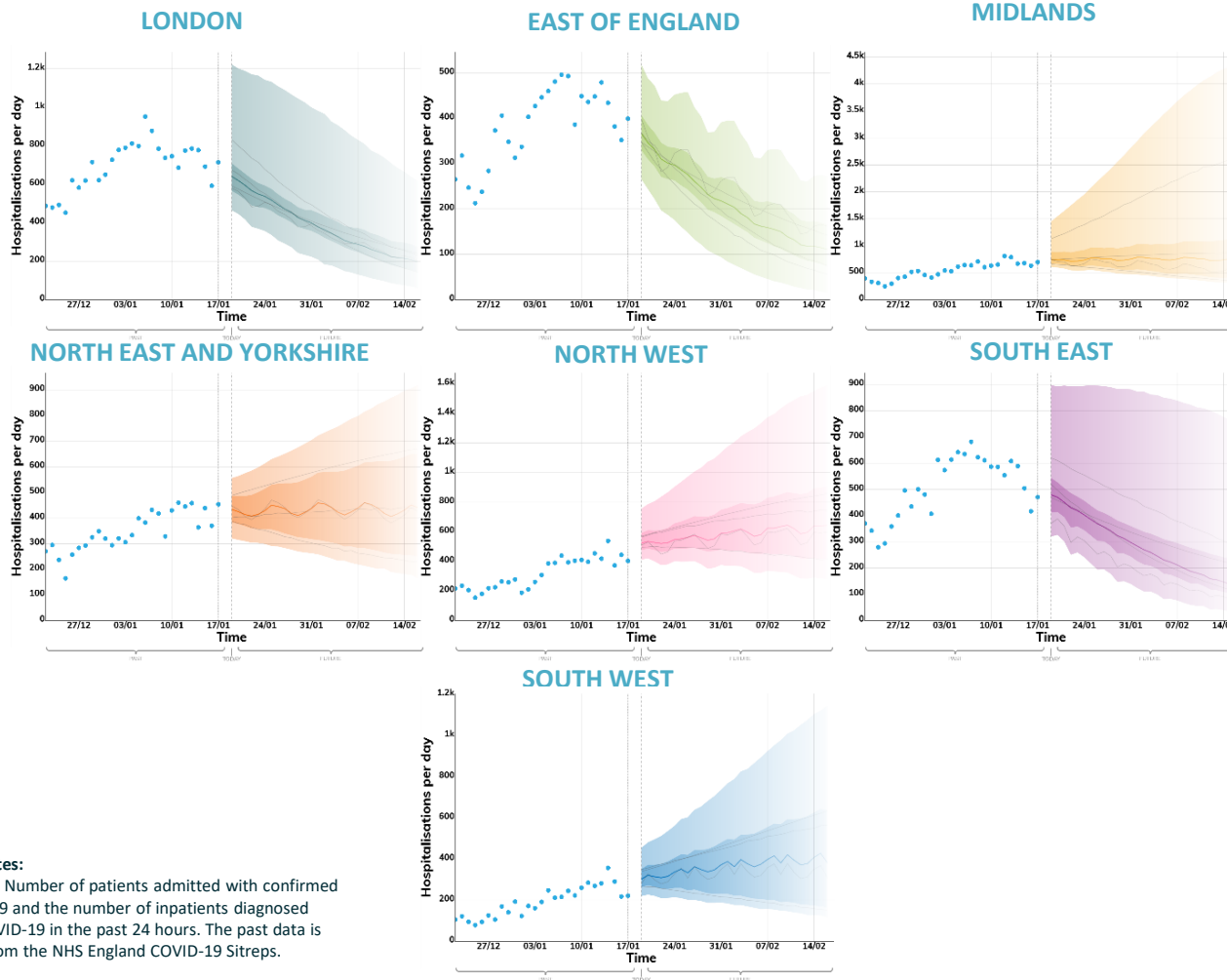
Data notes:

England: Number of patients admitted with confirmed COVID-19 and the number of inpatients diagnosed with COVID-19 in the past 24 hours. Taken from the NHSE COVID 19 Sitreps.
Wales: Number of patients admitted with confirmed COVID-19 and the number of patients diagnosed with COVID-19 on the day of admission. Provided by Public Health Wales.
Scotland: Number of patients admitted with confirmed COVID-19 and inpatients diagnosed with COVID-19 within 7 days of admission. Provided by Public Health Scotland.
Northern Ireland: Number of patients admitted with confirmed COVID-19 and the number of inpatients diagnosed with COVID-19. Provided by HSCNI.

Modelled projections based on trends to 18th January 2021

New hospital admissions per day

These projections are based on current trends and cannot yet include the full impact of the national lockdown announced on 5th January. They are not forecasts or predictions.



These fan charts show the combined medium-term projections based on current trends. They cannot account for policy or behavioural changes in the two to three weeks prior to 18th January, as these will not yet have been reflected in epidemiological data.

These projections will **not fully reflect the impact of the national lockdown announced on the 5th January.**

The projections do not include the impact of vaccinations yet to be administered or the planned expansion of the programme over the coming weeks. They will include the effect of any benefits of vaccination seen to date. The delay between vaccination, the build up of immunity and infection means the impact on admissions and deaths over the next 4 weeks is expected to be limited.

Data notes:
England: Number of patients admitted with confirmed COVID-19 and the number of inpatients diagnosed with COVID-19 in the past 24 hours. The past data is taken from the NHS England COVID-19 Sitreps.

Modelled projections based on trends to 18th January 2021

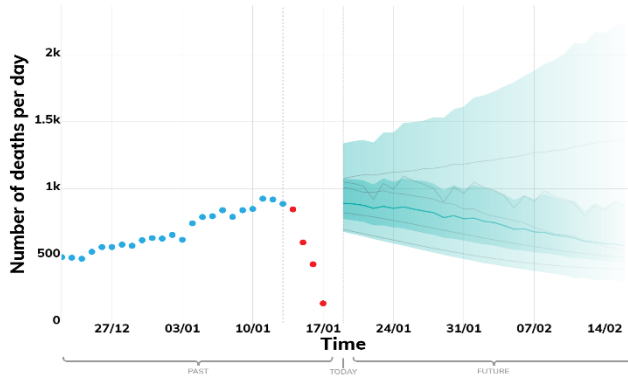
New deaths per day

These projections are based on current trends and cannot yet include the full impact of the national lockdown announced on 5th January. They are not forecasts or predictions.

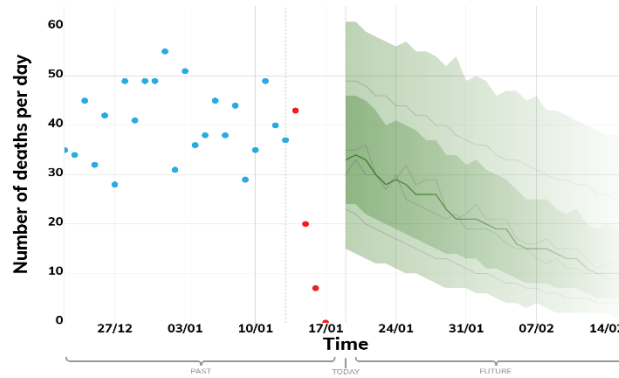
Key



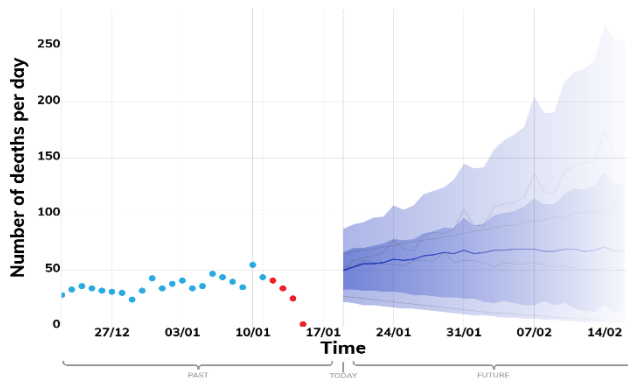
ENGLAND



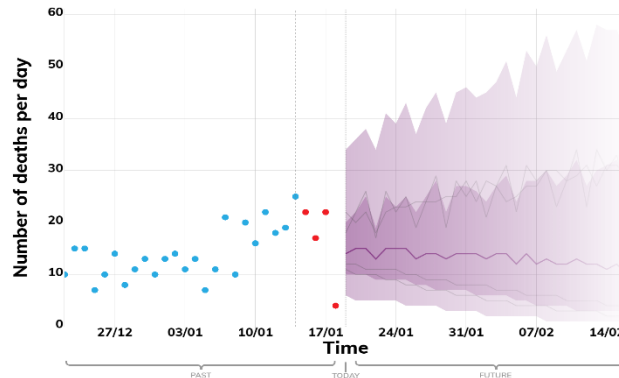
WALES



SCOTLAND



NORTHERN IRELAND



These fan charts show the combined medium-term projections based on current trends. They cannot account for policy or behavioural changes in the two to three weeks prior to 18th January, as these will not yet have been reflected in epidemiological data.

These projections will **not fully** reflect the impact of the national lockdown announced on the 5th January.

The projections do not include the impact of vaccinations yet to be administered or the planned expansion of the programme over the coming weeks. They will include the effect of any benefits of vaccination seen to date. The delay between vaccination, the build up of immunity and infection means the impact on admissions and deaths over the next 4 weeks is expected to be limited.

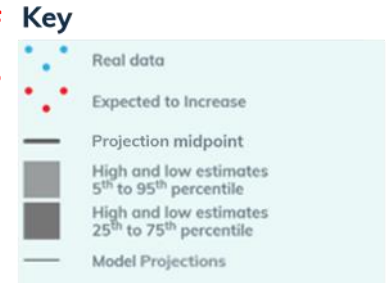
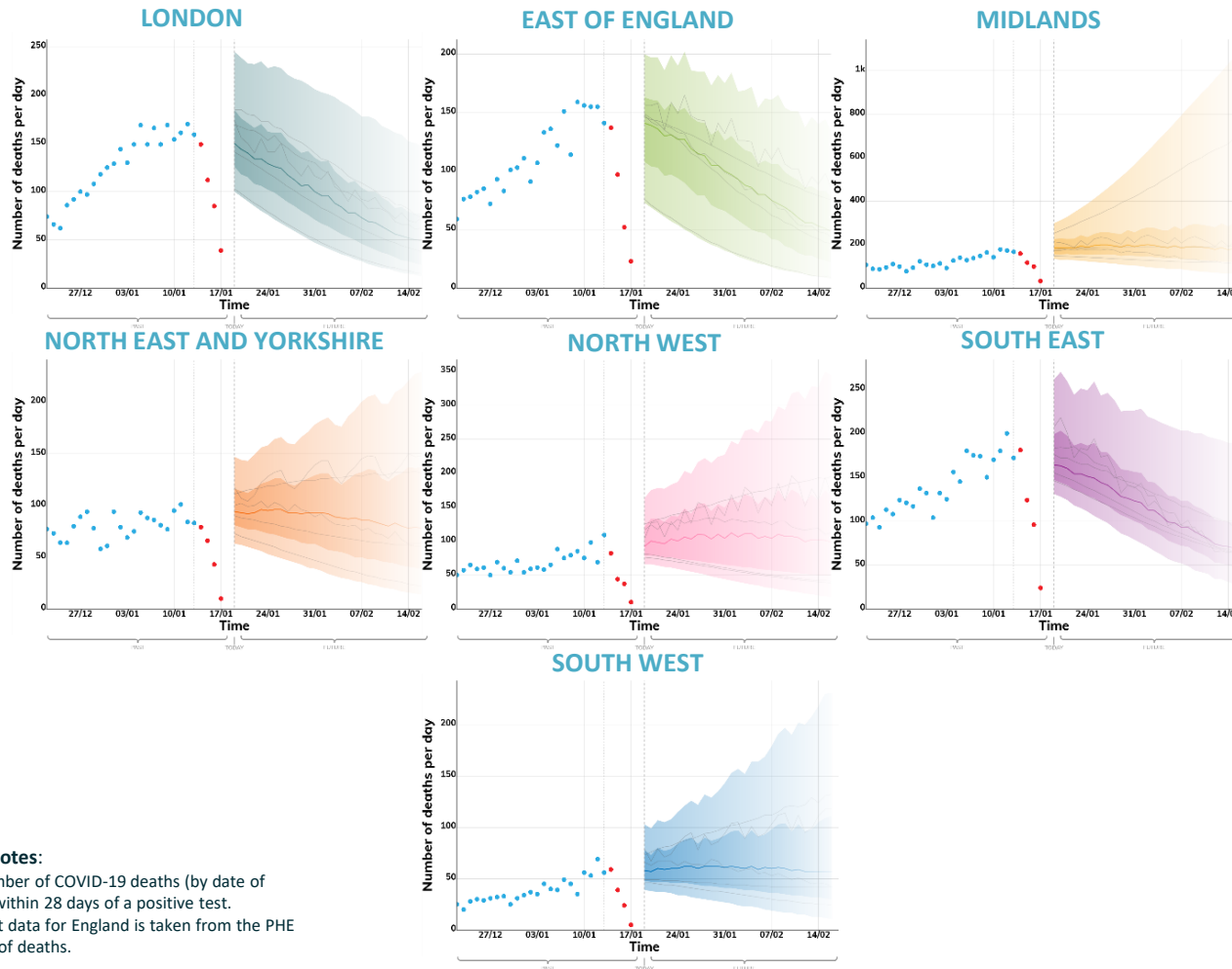
Data Notes:

The number of COVID-19 deaths (by date of death) within 28 days of a positive test. The past data for England is taken from the PHE line list of deaths. The past data for Scotland, Wales and Northern Ireland is taken from the Coronavirus (COVID-19) in the UK dashboard on Gov.uk.

Modelled projections based on trends to 18th January 2021

New deaths per day

These projections are based on current trends and cannot yet include the full impact of the national lockdown announced on 5th January. They are not forecasts or predictions.



These fan charts show the combined medium-term projections based on current trends. They cannot account for policy or behavioural changes in the two to three weeks prior to 18th January, as these will not yet have been reflected in epidemiological data.

These projections will **not fully reflect the impact of the national lockdown announced on the 5th January.**

The projections do not include the impact of vaccinations yet to be administered or the planned expansion of the programme over the coming weeks. They will include the effect of any benefits of vaccination seen to date. The delay between vaccination, the build up of immunity and infection means the impact on admissions and deaths over the next 4 weeks is expected to be limited.

Data Notes:

The number of COVID-19 deaths (by date of death) within 28 days of a positive test. The past data for England is taken from the PHE line list of deaths.