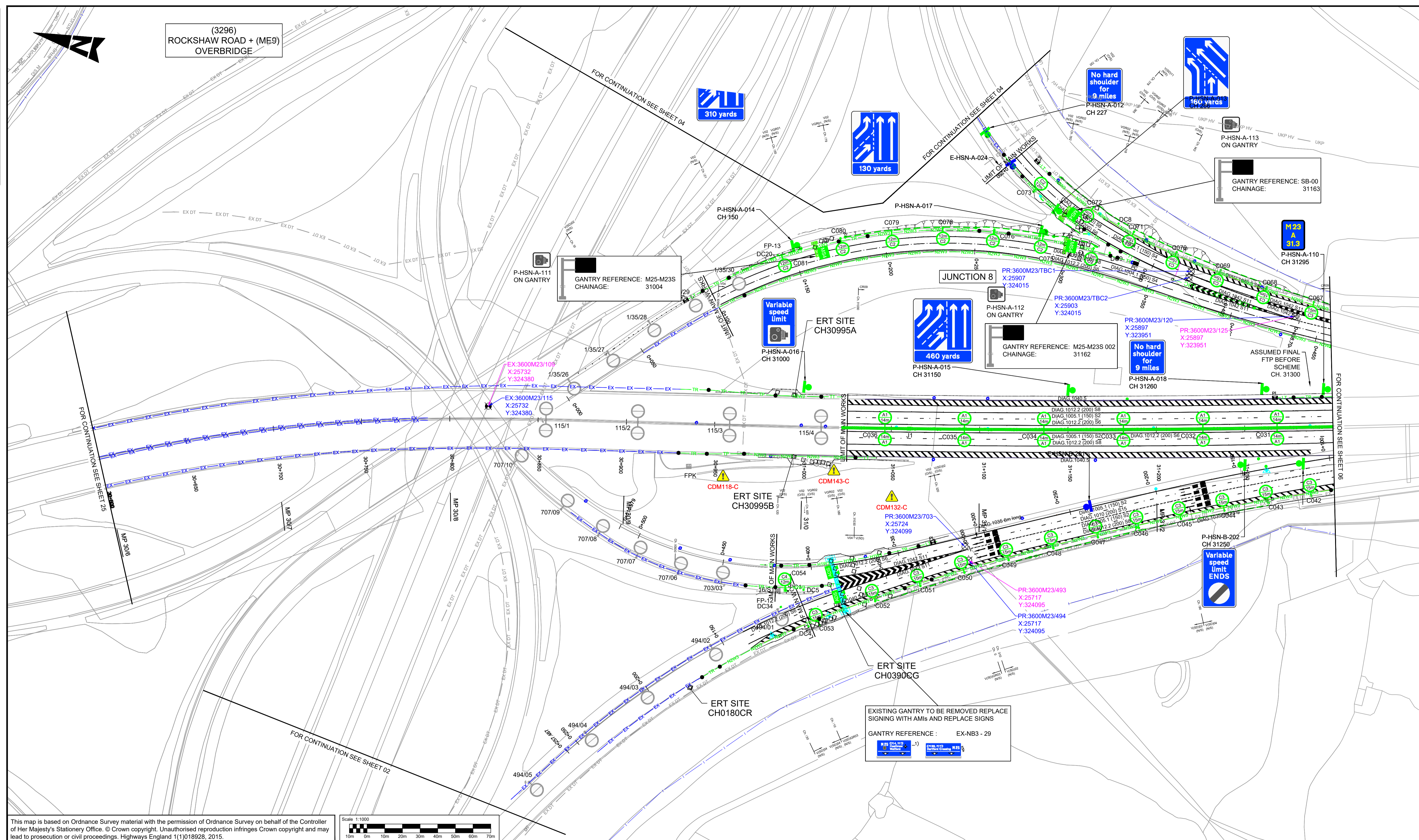
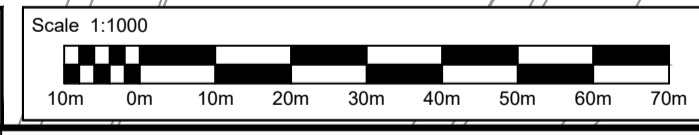


DO NOT SCALE

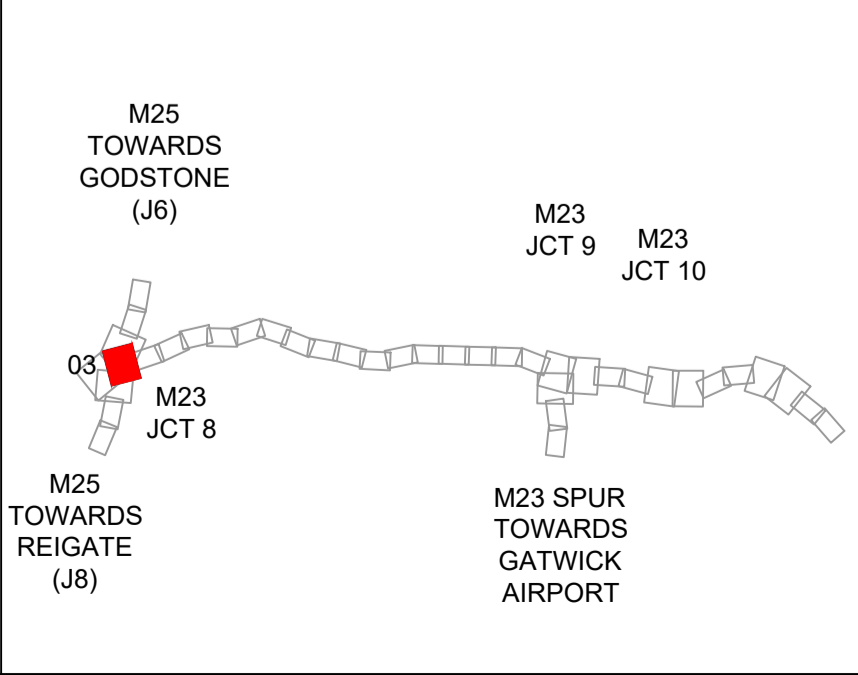
Millimetres
0 10 100



This map is based on Ordnance Survey material with the permission of Ordnance Survey on behalf of the Controller of Her Majesty's Stationery Office. © Crown copyright. Unauthorised reproduction infringes Crown copyright and may lead to prosecution or civil proceedings. Highways England 1(1)18928, 2015.



- FOR GENERAL NOTES AND LEGEND REFER TO DRAWING HA549337-JAV-HGN-SG_MULTI-DR-C-1000.
- REFER TO LANE DESTINATION DRAWINGS HA549337-JAV-HMK-SG_MULTI-SK-C-0001 TO 0006.
- NO REVISION CLOUDS HAVE BEEN INCLUDED IN THIS VERSION. VERGE MARKERS HAVE BEEN ADDED. FOR OTHER MINOR CHANGES SEE INDIVIDUAL SERIES DRAWINGS.



SAFETY, HEALTH AND ENVIRONMENTAL INFORMATION

The significant residual risks detailed on this drawing are linked to the referencing system within the Design Hazard Log (HA549337-JAV-PGN-SG_MULTI-HS-C-0001). Each risk is given a unique number followed by a letter that corresponds to one of the six stages affected.

Significant Residual Risks
DRAINAGE: - Refer to Drainage Series Drawings.
CDM118-C: - 1. Working to steep embankment slopes. 2. Site wide.
CDM132-C: - 1. Installation of lighting equipment and infrastructure. 2. Site wide.
CDM143-C: - 1. Working near existing infrastructure and cables during site clearance (retained/removed equipment) and construction (Ch. 46000B).

S - Survey
 C - Construction
 M - Maintenance
 O - Operation
 U - Road User
 D - Demolition

Rev.	Date	Description	By	CHK'd	Rev'd
C01	15/02/18	ISSUED FOR CONSTRUCTION (DFS)	BH	AM	WW
C02	28/03/18	ISSUED FOR CONSTRUCTION (DFS)	BH	AM	HN
C03	31/08/18	IFC (SIGNAGE AND MARKING UPDATED)	BH	TK	AM
C04	25/06/19	IFC (SIGNAGE AND MARKING UPDATED)	LM	TK	AM

Drawing Status: **FOR CONSTRUCTION**

Subsidiary: **A**

JACOBS ATKINS

Working on behalf of **highways england**

Project Title		M23 J8 - 10 SMART MOTORWAY			
Drawing Title		GENERAL ARRANGEMENT CH. 30600 TO 31300 SHEET 3 OF 25			
Scale	Designed / Drawn	Checked	Reviewed	Approved	
1:1000	LM	TK	AM	AM	
Original Size	Date	Date	Date	Date	
A1	21/06/19	21/06/19	25/06/19	25/06/19	
Drawing Number	Project	Originator	Volume	Revision	
	HA549337 - JAV - HGN - S2_31300 - DR - C - 0103			C04	
Location	Type	Role	Number		