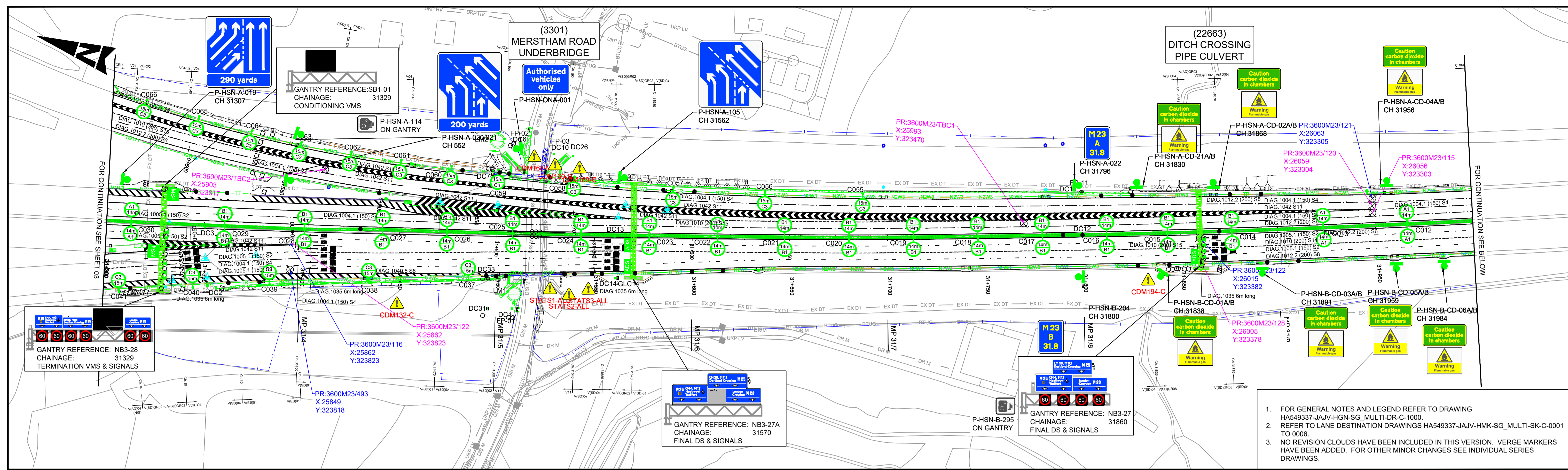
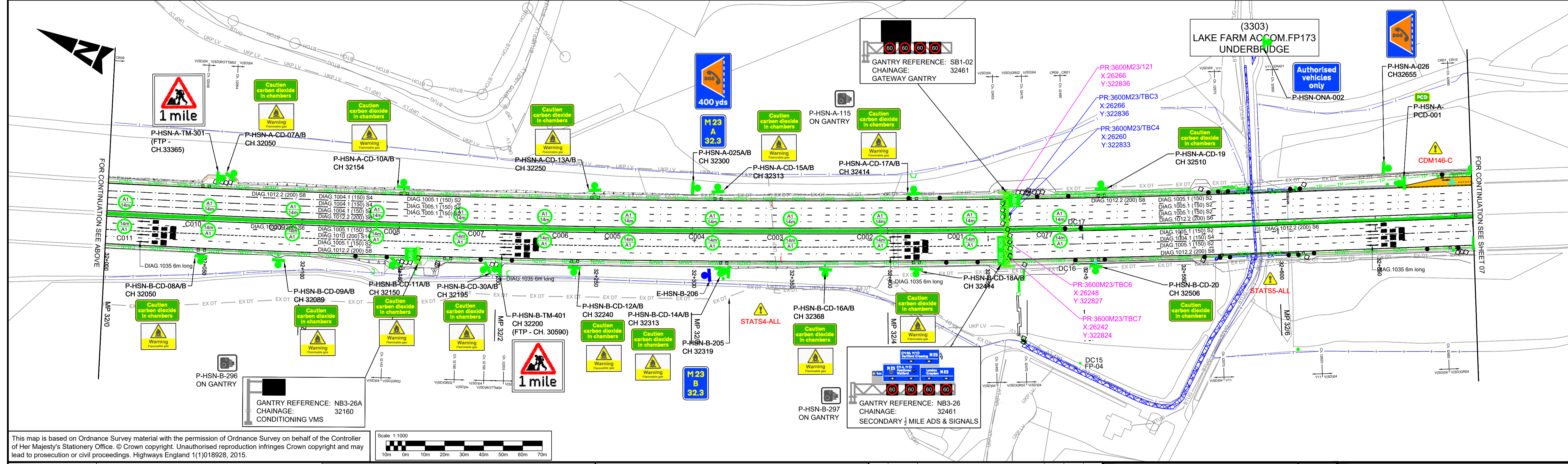


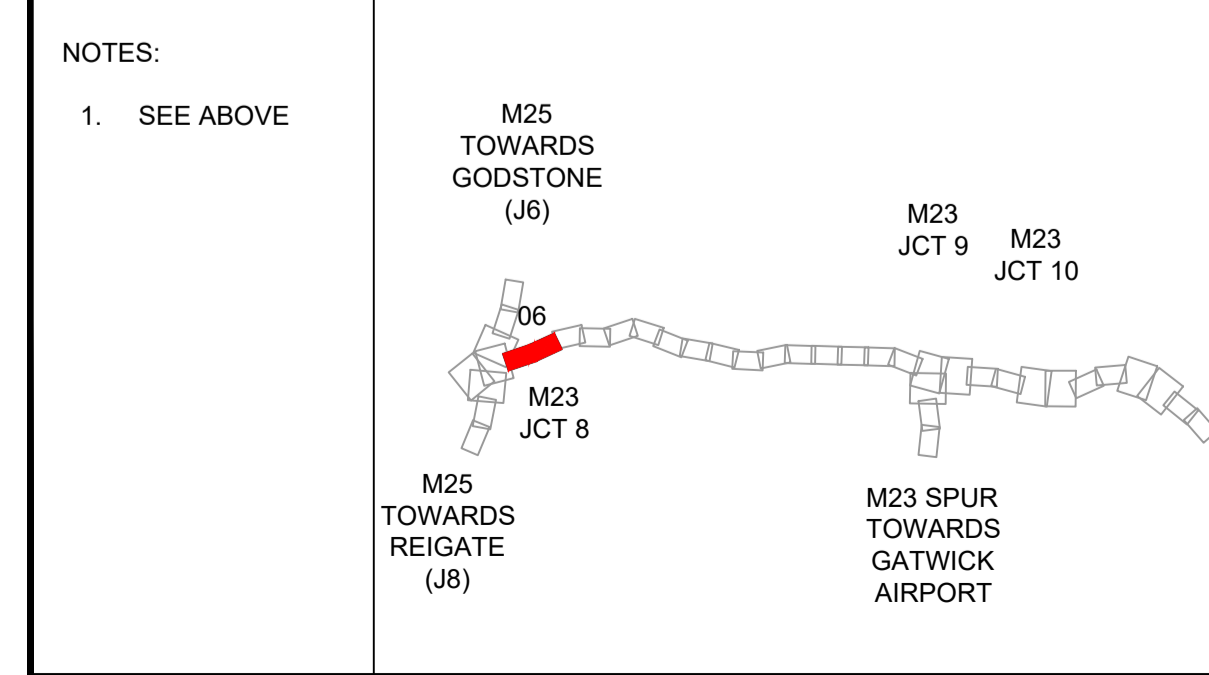
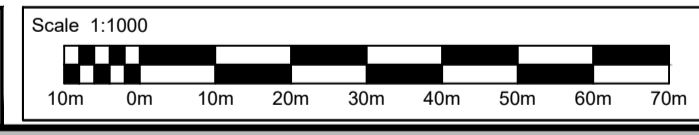
DO NOT SCALE



- FOR GENERAL NOTES AND LEGEND REFER TO DRAWING HA549337-JAUV-HGN-SG_MULTI-DR-C-1000.
- REFER TO LANE DESTINATION DRAWINGS HA549337-JAUV-HMK-SG_MULTI-SK-C-0001 TO 0006.
- NO REVISION CLOUDS HAVE BEEN INCLUDED IN THIS VERSION. VERGE MARKERS HAVE BEEN ADDED. FOR OTHER MINOR CHANGES SEE INDIVIDUAL SERIES DRAWINGS.



This map is based on Ordnance Survey material with the permission of Ordnance Survey on behalf of the Controller of Her Majesty's Stationery Office. © Crown copyright. Unauthorised reproduction infringes Crown copyright and may lead to prosecution or civil proceedings. Highways England 1(1)018928, 2015.



SAFETY, HEALTH AND ENVIRONMENTAL INFORMATION

The significant residual risks detailed on this drawing are linked to the referencing system within the Design Hazard Log (HA549337-JAUV-PGN-SG_MULTI-HS-C-0001). Each risk is given a unique number followed by a letter that corresponds to one of the six stages affected.

Significant Residual Risks

CDM132-C: - Refer to Drainage Series Drawings.

CDM146-C: - 1. Installation of lighting equipment and infrastructure. 2. Site wide. (retained/removed equipment). 2. MS3 Ch32700A.

CDM160-D: - 1. Sawing and bending of existing reinforcement in RC upstands. 2. Cooper's Hill Viaduct (STR3309; CH. 35490) & Merstham Road UB (STR3301; CH. 31500) Balcombe Road UB at Spur road (STR3329; CH. 1075).

CDM168-M: - 1. Replacement of filler into longitudinal joint. 2. Cooper's Hill Viaduct (STR3309; CH. 35266-35490) & Merstham Road UB (STR3301; CH. 31500). ALL Underbridges except Lake Farm.

CDM169-D: - 1. Work on verges/edge of deck. 2. ALL underbridges.

S - Survey
C - Construction
M - Maintenance
O - Operation
U - Road User
D - Demolition

SAFETY, HEALTH AND ENVIRONMENTAL INFORMATION

Continued

CDM194-C: - 1. Working near the proximity of existing culvert (NB Ch. 31840).

STATS1-ALL: - 1. Working close to Sutton and East Surrey Water pipe (Ch. 31525).

STATS2-ALL: - 1. Working close to BT Communication cable (Ch. 31525).

STATS3-ALL: - 1. Working close to buried HV cable (Ch. 31525).

STATS4-ALL: - 1. Working close to buried LV cable (Ch. 32340).

STATS5-ALL: - 1. Working close to BT Communication cable (Ch. 32580).

Rev.	Date	Description	By	Chkd	Rev'd
C01	15/02/18	ISSUED FOR CONSTRUCTION (DFS)	BH	AM	WW
C02	28/03/18	ISSUED FOR CONSTRUCTION (DFS)	BH	AM	HN
C03	31/08/18	IFC (SIGNAGE AND MARKING UPDATED)	BH	TK	AM
C04	25/06/19	IFC (SIGNAGE AND MARKING UPDATED)	LM	TK	AM

FOR CONSTRUCTION

JACOBS ATKINS

Working on behalf of **highways england**

Project Title	M23 J8 - 10 SMART MOTORWAY				
Drawing Title	GENERAL ARRANGEMENT CH. 31300 TO 32700 SHEET 6 OF 25				
Scale	1:1000	Designed / Drawn	LM	Checked	TK
Original Size	A1	Date	21/06/19	Date	21/06/19
Reviewed	AM	Date	25/06/19	Approved	AM
Volume	HA549337 - JAUV - HGN - S3_32700 - DR - C - 0106	Revision	C04		