

SPI-M-O

Medium-Term Projections

6th January 2021

SPI-M-O Medium-Term Projections

- **These projections are not forecasts or predictions.** They represent a scenario in which the trajectory of the epidemic continues to follow the trends that were seen in the data up to 4th January.
- Disruption to data flows and increased reporting delays over the festive period makes it difficult to interpret recent trends in the data. **These projections will not reflect any revisions to made to the data as this disruption unwinds.**
- **These projections will not fully reflect the levels of mixing over the festive period or the impact of policy changes made in the two to three weeks prior to 4th January.**
- **Nor can they account for the impact of England's national lockdown from 5th January.** The projections are only for the next 2 weeks, with the majority of hospitalisations and deaths over this period due to infections prior to these announcements. The trajectory beyond that will depend on the impact of the lockdown that we cannot predict. **We do not know whether those restrictions will get R below 1.**
- Not all modelling groups produce projections for both hospitalisations and deaths. As a result, there will be some differences in the models included in the combined projections for each metric.

Metrics:

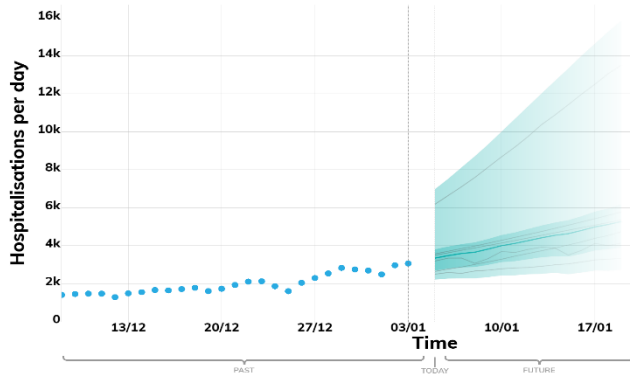
- **New hospitalisations per day:** Number of individuals admitted with COVID-19 and inpatients newly diagnosed with COVID-19. Data definitions differ slightly across all four nations.
- **New deaths per day (by date of death):** The number of COVID-19 deaths within 28 days of a positive test. Data definitions differ slightly across all four nations.

Modelled projections based on trends to 4th January 2021

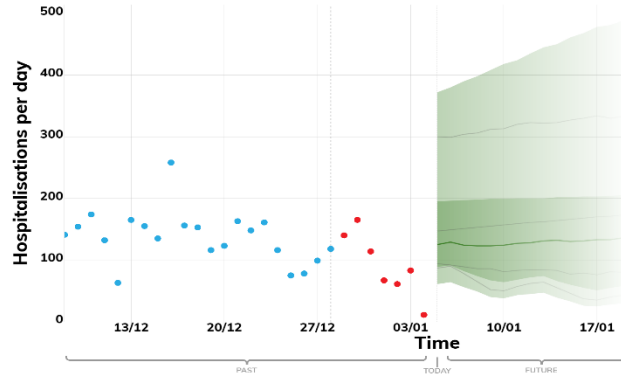
New hospital admissions per day

These projections are based on current trends and cannot include the full impact of mixing over the festive period. They are not forecasts or predictions.

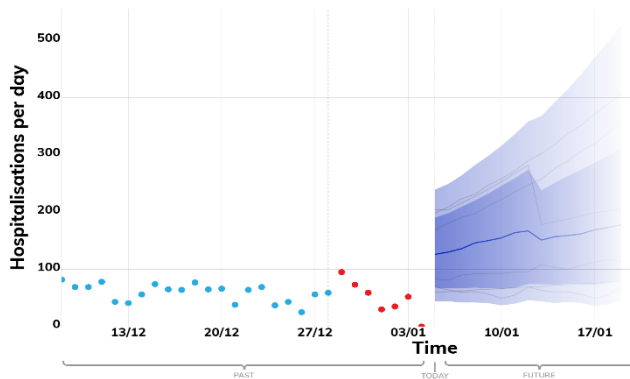
ENGLAND



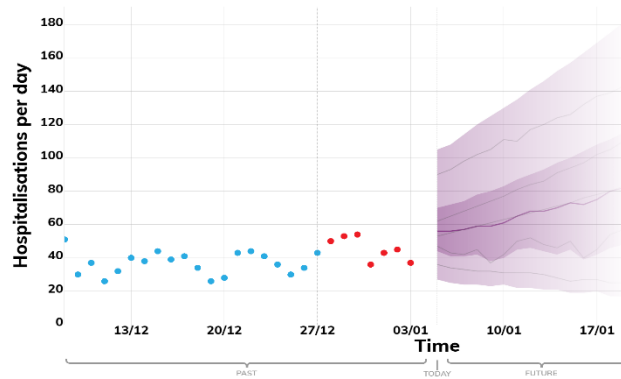
WALES



SCOTLAND



NORTHERN IRELAND



Key



These fan charts show the combined medium-term projections based on current trends. They cannot account for policy or behavioural changes in the two to three weeks prior to 4th January, as these will not yet have been reflected in epidemiological data.

These projections will not *fully* reflect the levels of mixing over the festive period.

Nor can they account for the impact of the national restrictions recently announced. We do not know whether those restrictions will get R below 1. The projections are only for the next 2 weeks, with the majority of hospitalisations and deaths over this period being due to infections prior to these announcements.

Data notes:

England: Number of patients admitted with confirmed COVID-19 and the number of inpatients diagnosed with COVID-19 in the past 24 hours. Taken from the NHSE COVID 19 Sitreps.

Wales: Number of patients admitted with confirmed COVID-19 and the number of patients diagnosed with COVID-19 on the day of admission. Provided by Public Health Wales.

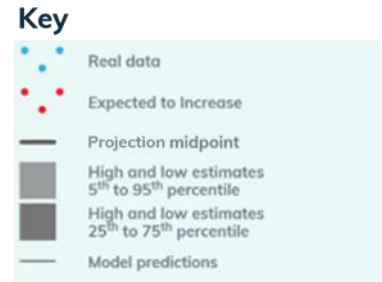
Scotland: Number of patients admitted with confirmed COVID-19 and inpatients diagnosed with COVID-19 within 7 days of admission. Provided by Public Health Scotland.

Northern Ireland: Number of patients admitted with confirmed COVID-19 and the number of inpatients diagnosed with COVID-19. Provided by HSCNI.

Modelled projections based on trends to 4th January 2021

New hospital admissions per day

These projections are based on current trends and cannot include the full impact of mixing over the festive period. They are not forecasts or predictions.



These fan charts show the combined medium-term projections based on current trends. They cannot account for policy or behavioural changes in the two to three weeks prior to 4th January, as these will not yet have been reflected in epidemiological data.

These projections will not *fully* reflect the levels of mixing over the festive period.

Nor can they account for the impact of the national restrictions recently announced. We do not know whether those restrictions will get R below 1. The projections are only for the next 2 weeks, with the majority of hospitalisations and deaths over this period being due to infections prior to these announcements.

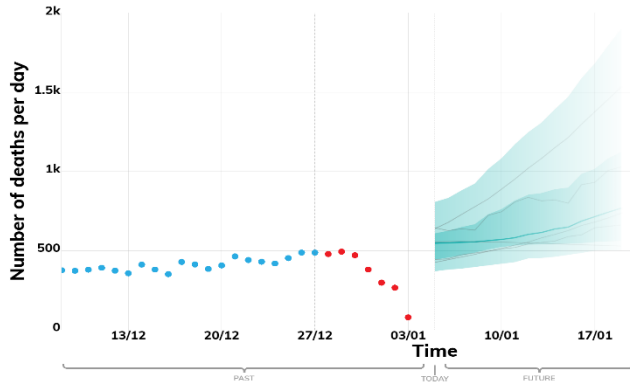
Data notes:
England: Number of patients admitted with confirmed COVID-19 and the number of inpatients diagnosed with COVID-19 in the past 24 hours. The past data is taken from the NHS England COVID-19 Sitreps.

Modelled projections based on trends to 4th January 2021

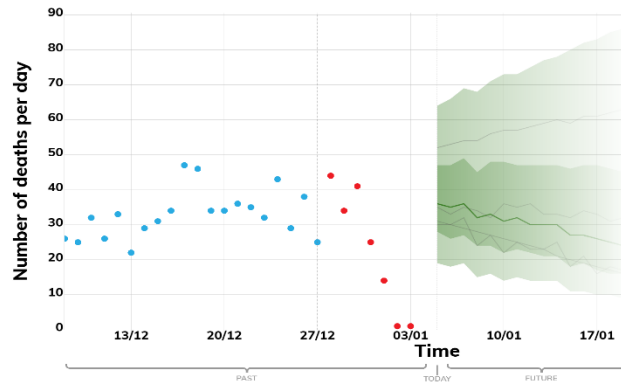
New deaths per day

These projections are based on current trends and cannot include the full impact of mixing over the festive period. They are not forecasts or predictions.

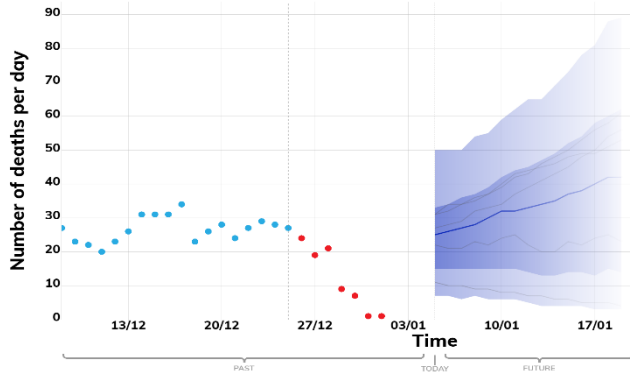
ENGLAND



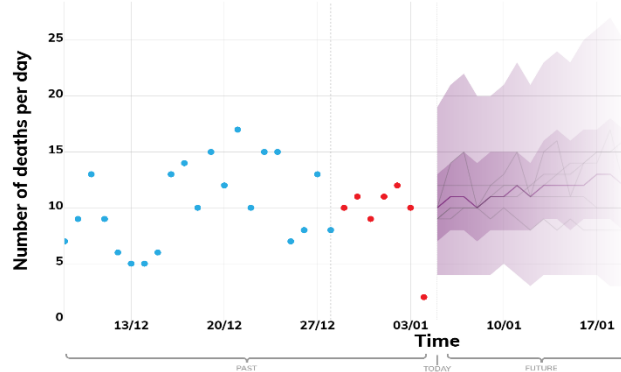
WALES



SCOTLAND



NORTHERN IRELAND



Key



These fan charts show the combined medium-term projections based on current trends. They cannot account for policy or behavioural changes in the two to three weeks prior to 4th January, as these will not yet have been reflected in epidemiological data.

These projections will not *fully* reflect the levels of mixing over the festive period.

Nor can they account for the impact of the national restrictions recently announced. We do not know whether those restrictions will get R below 1. The projections are only for the next 2 weeks, with the majority of hospitalisations and deaths over this period being due to infections prior to these announcements.

Data Notes:

The number of COVID-19 deaths (by date of death) within 28 days of a positive test.

The past data for England is taken from the PHE line list of deaths. The past data for Scotland, Wales and Northern Ireland is taken from the Coronavirus (COVID-19) in the UK dashboard on Gov.uk.

Modelled projections based on trends to 4th January 2021

New deaths per day

These projections are based on current trends and cannot include the full impact of mixing over the festive period. They are not forecasts or predictions.



Key

- Real data
- Expected to Increase
- Projection midpoint
- High and low estimates 5th to 95th percentile
- High and low estimates 25th to 75th percentile
- Model predictions

These fan charts show the combined medium-term projections based on current trends. They cannot account for policy or behavioural changes in the two to three weeks prior to 4th January, as these will not yet have been reflected in epidemiological data.

These projections will not *fully* reflect the levels of mixing over the festive period.

Nor can they account for the impact of the national restrictions recently announced. We do not know whether those restrictions will get R below 1. The projections are only for the next 2 weeks, with the majority of hospitalisations and deaths over this period being due to infections prior to these announcements.

Data Notes:

The number of COVID-19 deaths (by date of death) within 28 days of a positive test. The past data for England is taken from the PHE line list of deaths.