

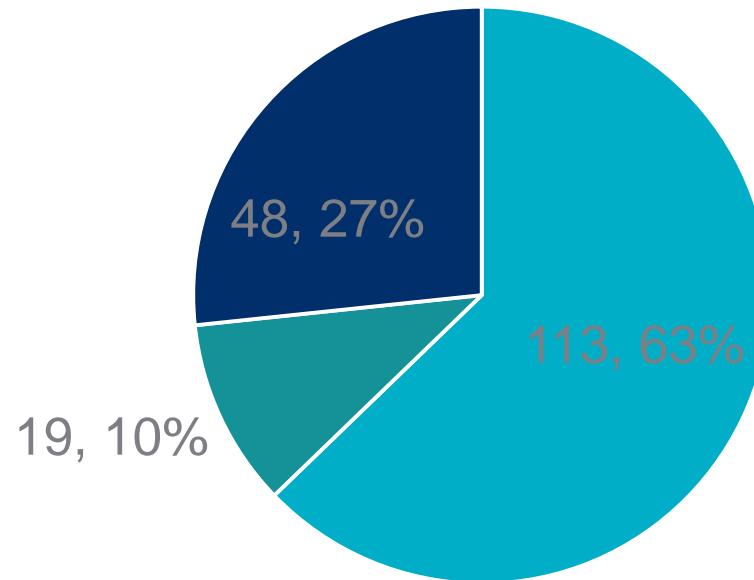
HS2 Phase 1 Enabling Works- Central Section HERDS update to Heritage Sub Group

15 December 2020

Intrusive surveys progress

- Design complete (180 evaluation site survey areas in total)
- 63% of scope complete
- 10% is in progress
- 27% mobilising for completion early 2021 (majority blank areas and handful of trench sites)

Archaeological science
Borehole survey
Systematic fieldwalking survey
Test pit
Trial trench

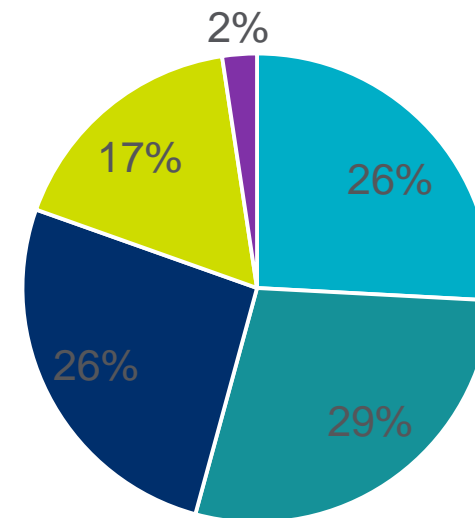


■ Completed ■ In Progress ■ Premobilisation

- c16% of mitigation is now completed
- 30 locations are in progress
- 41 locations are designed and soon to mobilise
- 31 site areas are subject to completion of trenching and mitigation is not yet defined
- 1 site Illet's Farm descope by design
- Forecast total area (158ha) at 131 locations

	Area ha	% split	Site Areas
Completed	25.25	15.93%	28
In Progress	27.74	17.50%	30
Premobilisation	25.59	16.15%	22
Procurement	16.79	10.59%	19
Descoped	2.33	1.47%	1
Design	60.78	38.35%	31
Total	158.48		131

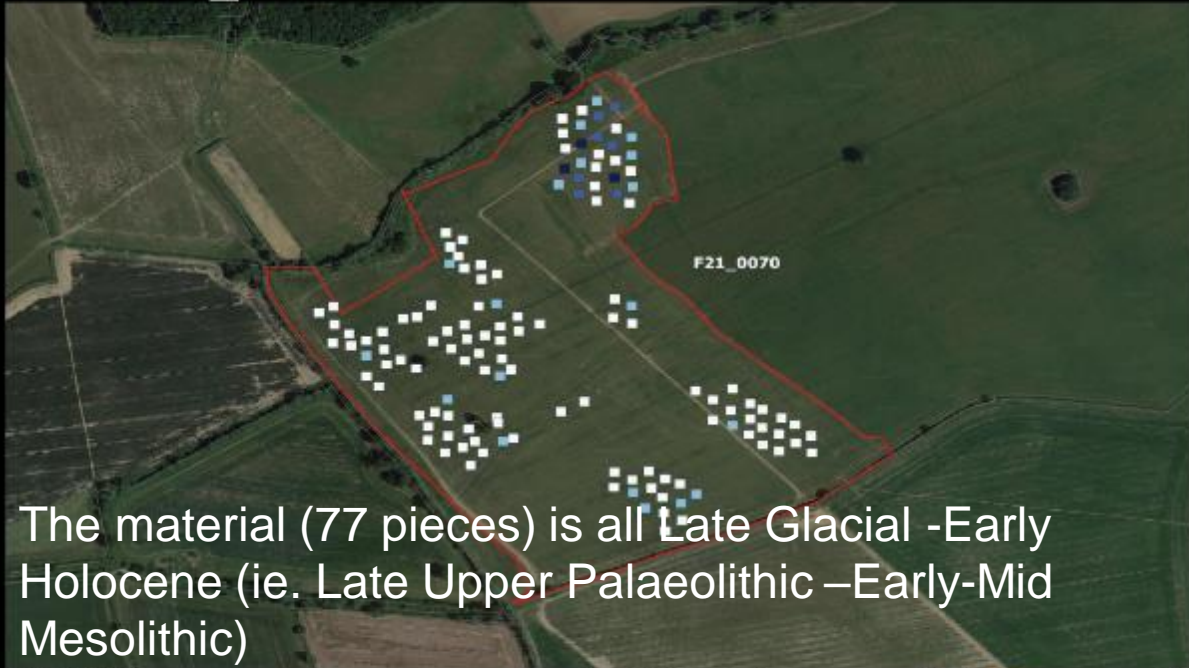
AWH Central AT03



- Completed
- In Progress
- Premobilisation
- Procurement
- Descoped

Mitigation works progress

Field F21_0070



The material (77 pieces) is all Late Glacial -Early Holocene (ie. Late Upper Palaeolithic –Early-Mid Mesolithic)



Density distribution of finds from test pits

Blank Area Testing: some preliminary results to inform further adaptive sampling



Field F21_0070



Retouched blades from Field F21_0070, the bottom row left piece might have been used as a spear point

Field F21_0070



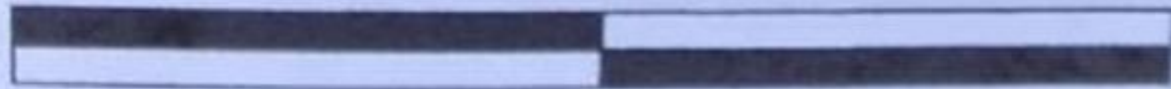
Selection of piercers from Field F21_0070 (points to the top)

Field F21_0070

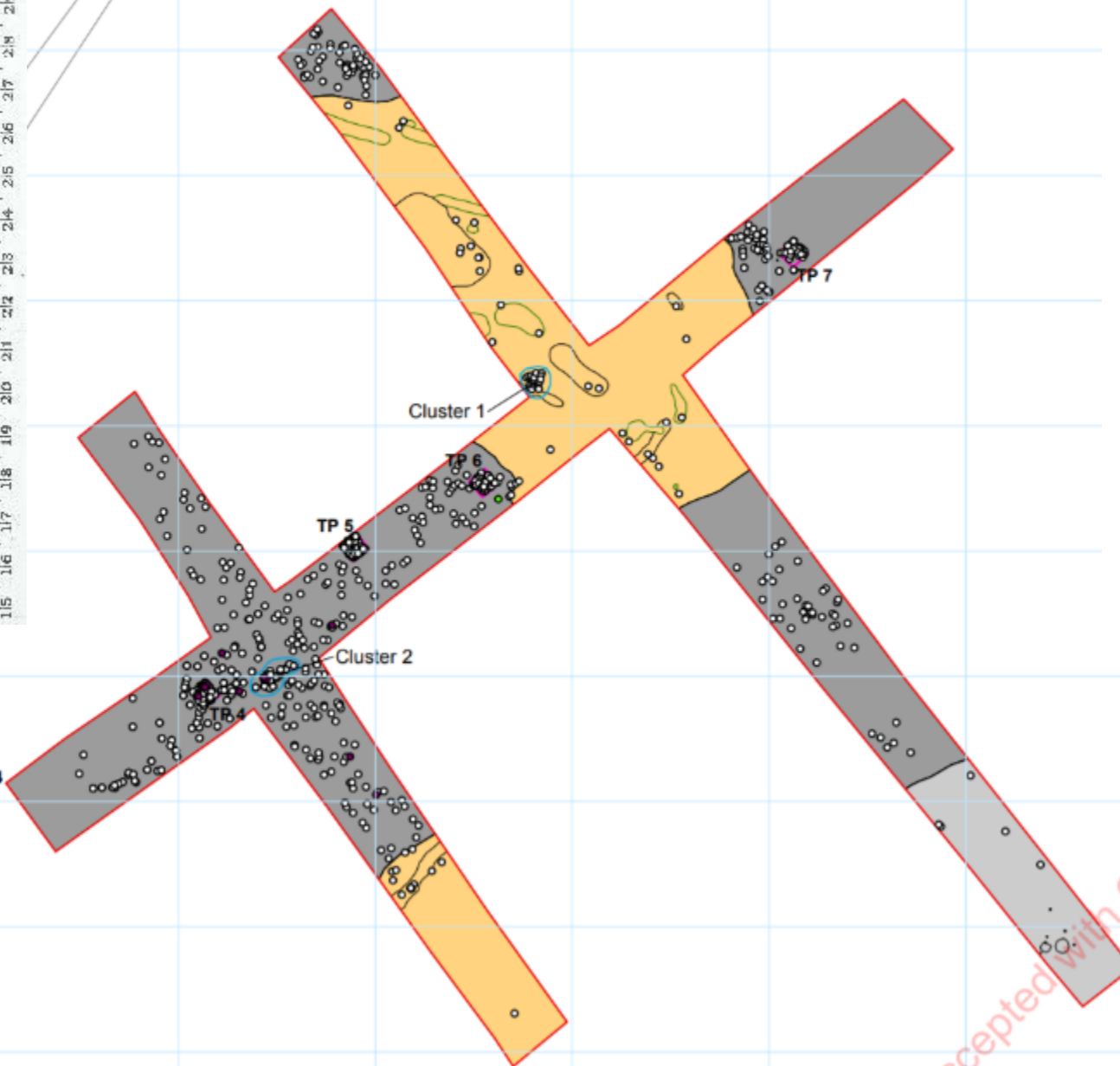
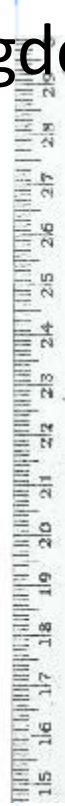


Flint scrapers from Field F21_0070: top row large scrapers, bottom row small scrapers. Left hand end of both rows Late Upper Palaeolithic material, right hand side likely Early Mesolithic.

Lower Radbourne, Mesolithic axehead roughout from F28_009



Dews Farm, Hillingdon



TT084

TT085

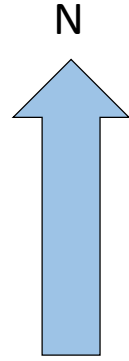
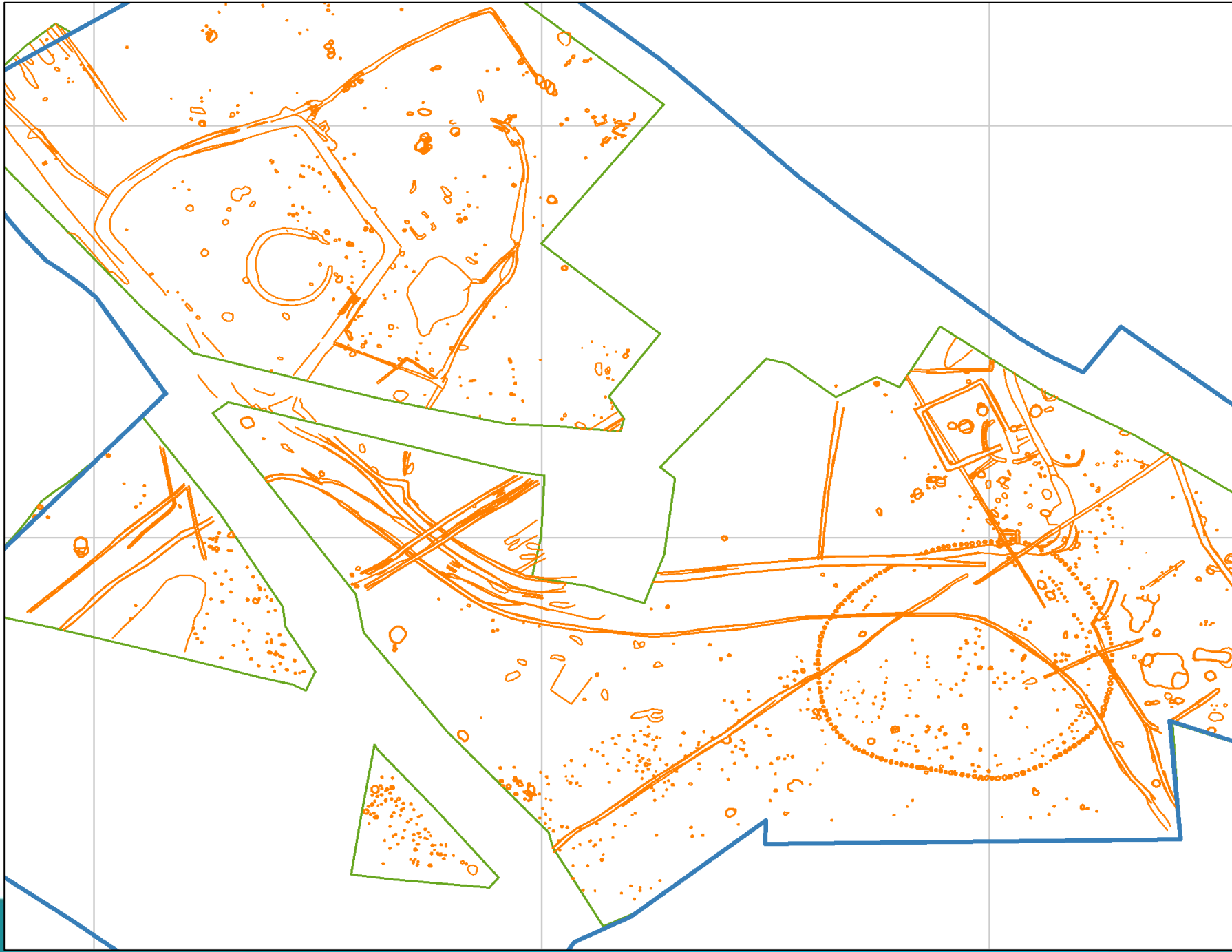
Accepted with Comments (Revise)

1405 Mesolithic worked flints recovered from stream edge site

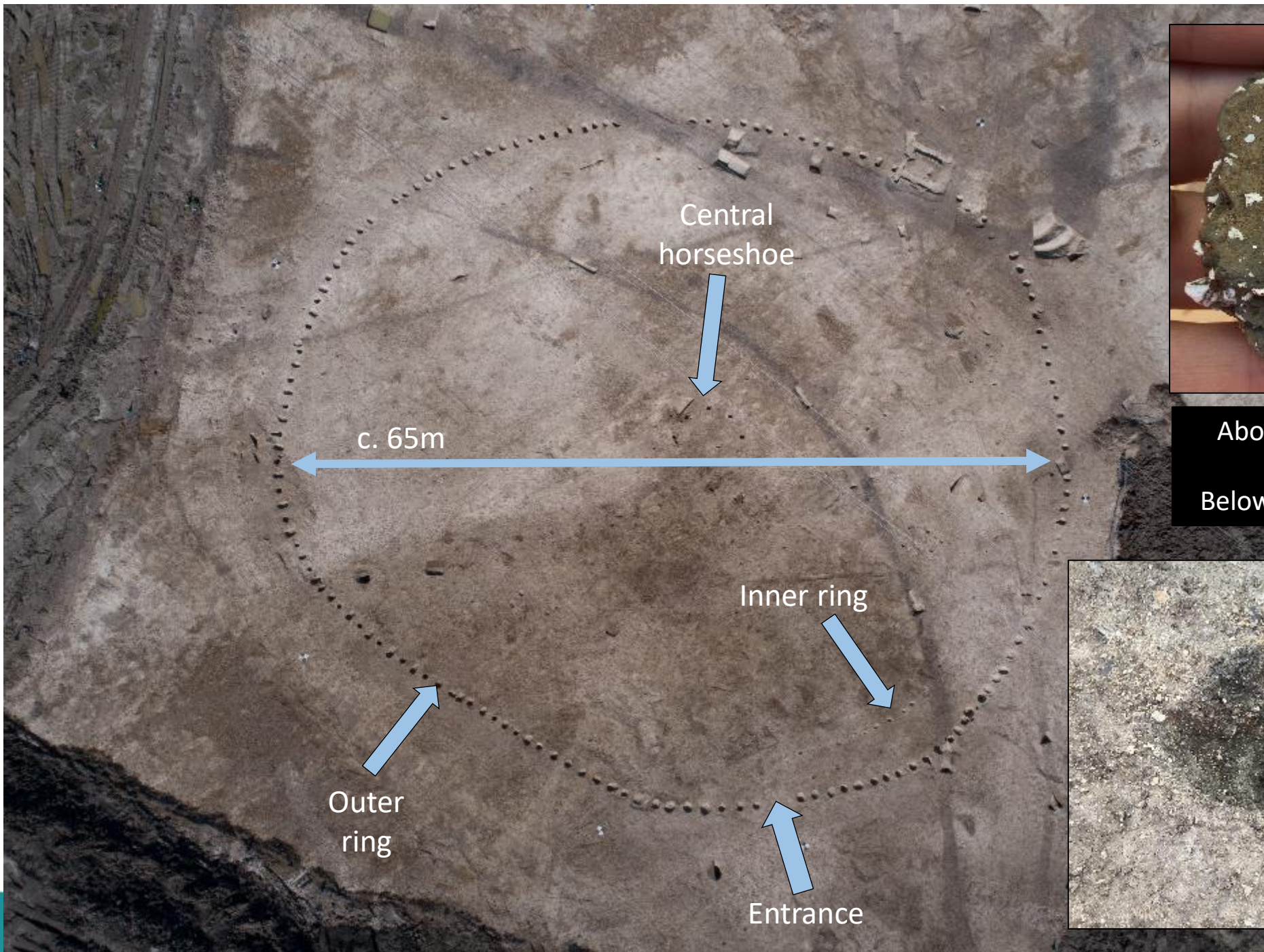
Wellwick Farm, Wendover— a monumental circle



Wellwick Farm, Wendover— a monumental circle



Wellwick Farm, Wendover— a monumental circle

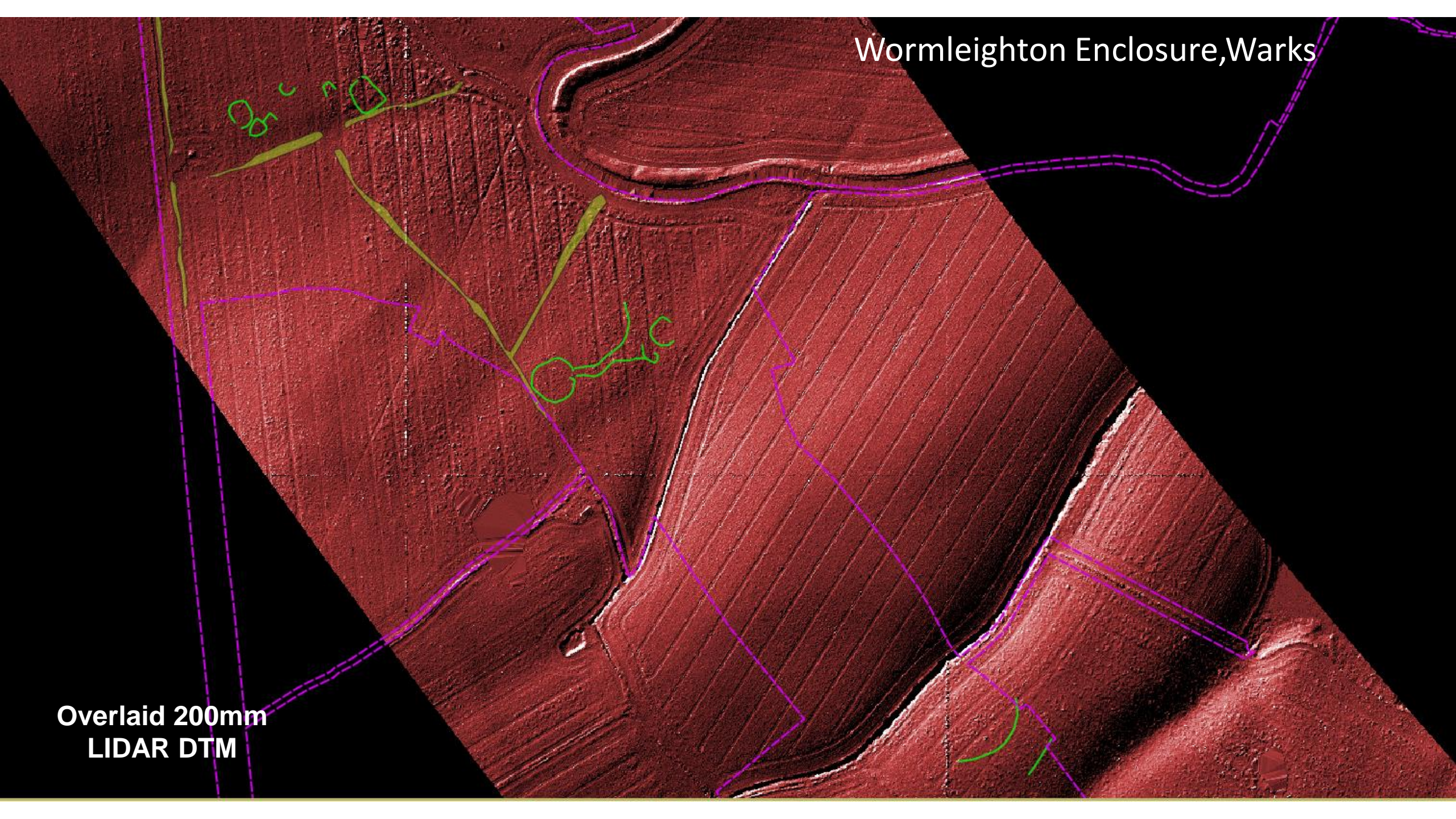


Above : Mid BA pottery
Below : entrance post-slot



Wormleighton Enclosure, Warks

Overlaid 200mm
LIDAR DTM





Grim's Ditch Scheduled Monument:
post tree clearance, 3D model image









Great Missenden Anglo Saxon
Structure 3 looking north-east